

Service Manual

ORDER NO.
CRT2217

MULTI-PLAY CD ADAPTOR

CD-P75FM UC,EW

- This additional service manual is designed to be used together with Model CD-P70FM/UC,EW Service Manual CRT1582. Refer to it for finding parts numbers and adjustment, etc. which are not shown in this manual.

SAFETY INFORMATION

CAUTION

This service manual is intended for qualified service technicians; it is not meant for the casual do-it-yourselfer. Qualified technicians have the necessary test equipment and tools, and have been trained to properly and safely repair complex products such as those covered by this manual. Improperly performed repairs can adversely affect the safety and reliability of the product and may void the warranty. If you are not qualified to perform the repair of this product properly and safely; you should not risk trying to do so and refer the repair to a qualified service technician.

WARNING

Lead in solder used in this product is listed by the California Health and Welfare agency as a known reproductive toxicant which may cause birth defects or other reproductive harm (California Health and Safety Code, Section 25249.5). When servicing or handling circuit boards and other components which contain lead in solder, avoid unprotected skin contact with the solder. Also, when soldering do not inhale any smoke or fumes produced.

PACKING METHOD(Page 2-9)

● Parts List

*:Non Spare Part

Mark	No.	Description	Part No.	
			CD-P70FM/UC,EW	CD-P75FM/UC,EW
	5-2	Fastener(x3)(Rough)	CNM-667	CNM5318
	7-4-1	Screw(x2)(UC)	PMS30P050FZK	IMS30P050FZK
	8	Carton(UC)	CZH6027	CZH6131
		Carton(EW)	CZH6029	CZH6133
	9	Contain Box(UC)	CZH6028	CZH6132
		Contain Box(EW)	CZH6030	CZH6134
	10	Owner's Manual(UC)	CZR3137	CZR3185
		Owner's Manual(EW)	CZR3138	CZR3186
		Owner's Manual(EW)	Not used	CZR3190
*	10-2	Warranty Card(EW)	CRY1071	CRY1087
*	11	Remote Control Unit	CZE3134	CZE3239
*	11-2	Remote Control Assy	CXA6570	CXB2969
		Caution Card(UC)	Not used	CZP3284

● Owner's Manual

Model	Part No.	Language
CD-P75FM/EW	CZR3186	English, Italian, French
	CZR3190	German, Dutch, Spanish

EXPLODED VIEW PARTS LIST(Page 1-13)

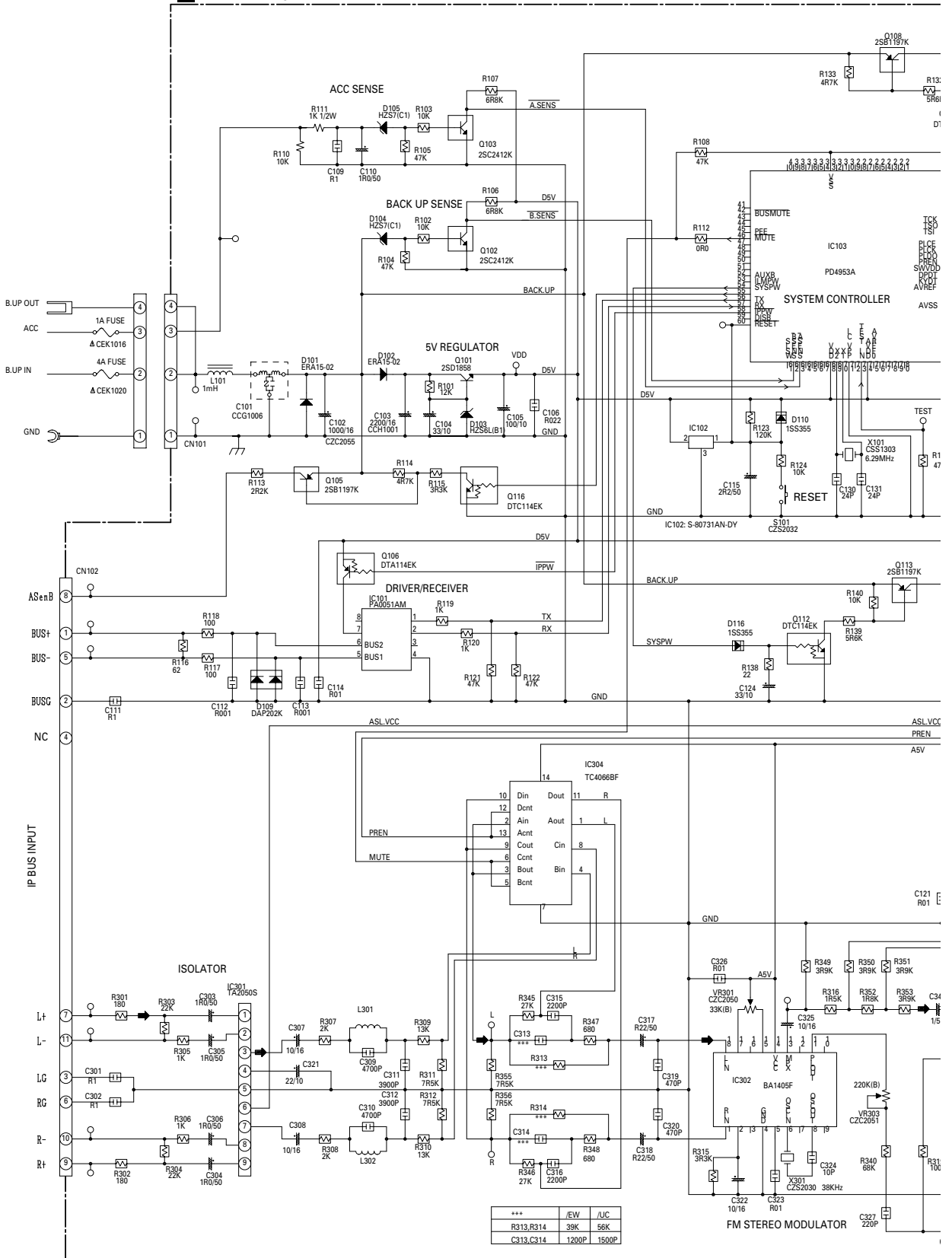
● Chassis

Mark	No.	Description	Part No.	
			CD-P70FM/UC,EW	CD-P75FM/UC,EW
	2	Button	CAC3737	CZA6070
	3	Grille Unit	CZX3145	CZX3225
	15	Screw	PMS30P050FZK	IMS30P050FZK
	23	Case	CZN6280	CZN7556
	24	Screw	BMZ30P060FMC	BSZ30P060FMC
	39	Display Unit(UC)	CZX3146	CZX3223
		Display Unit(EW)	CZX3147	CZX3226
	40	Hideaway Unit(UC)	CZX3148	CZX3224
		Hideaway Unit(EW)	CZX3149	CZX3227
	41	Remote Control Assy	CXA6570	CXB2969

SCHEMATIC DIAGRAM

Note: When ordering service parts, be sure to refer to "EXPLODED VIEWS AND PARTS LIST" or "ELECTRICAL PARTS LIST".

AF HIDE-AWAY UNIT

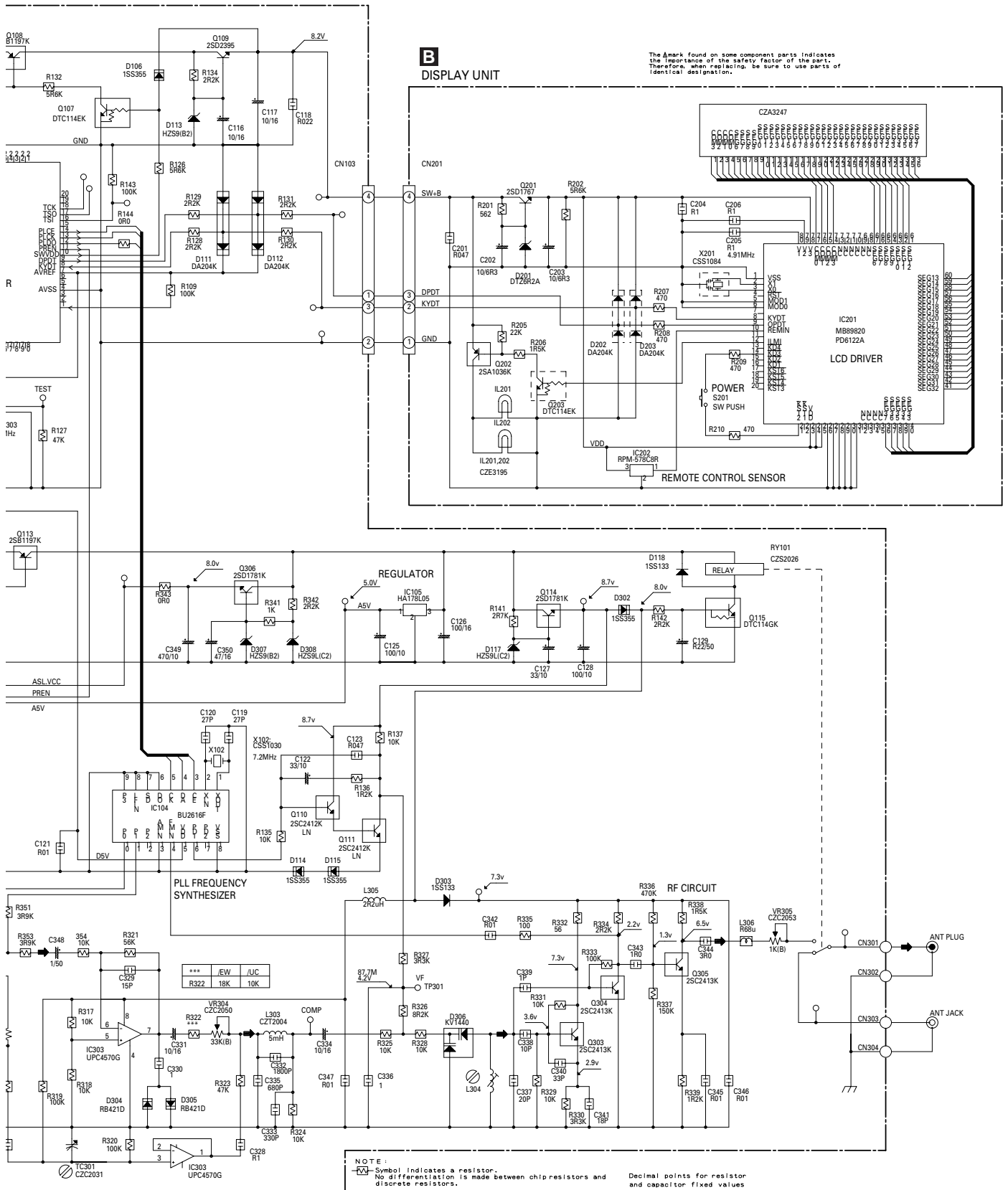


A

B

C

D

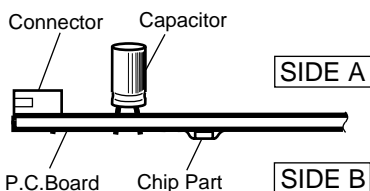


PCB CONNECTION DIAGRAM HIDEAWAY UNIT

A

NOTE FOR PCB DIAGRAMS

1. The parts mounted on this PCB include all necessary parts for several destination. For further information for respective destinations, be sure to check with the schematic diagram.
2. Viewpoint of PCB diagrams

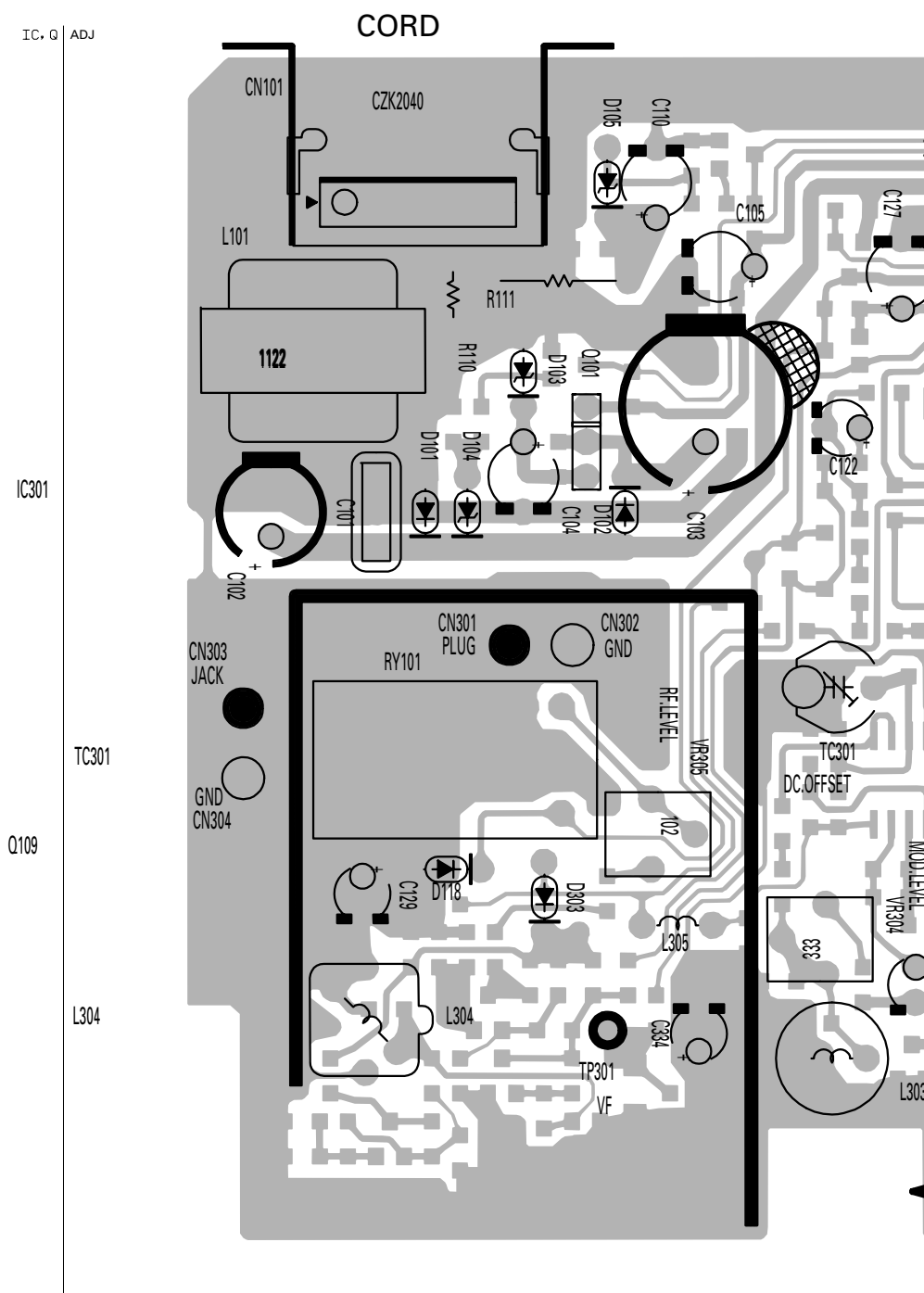


B

C

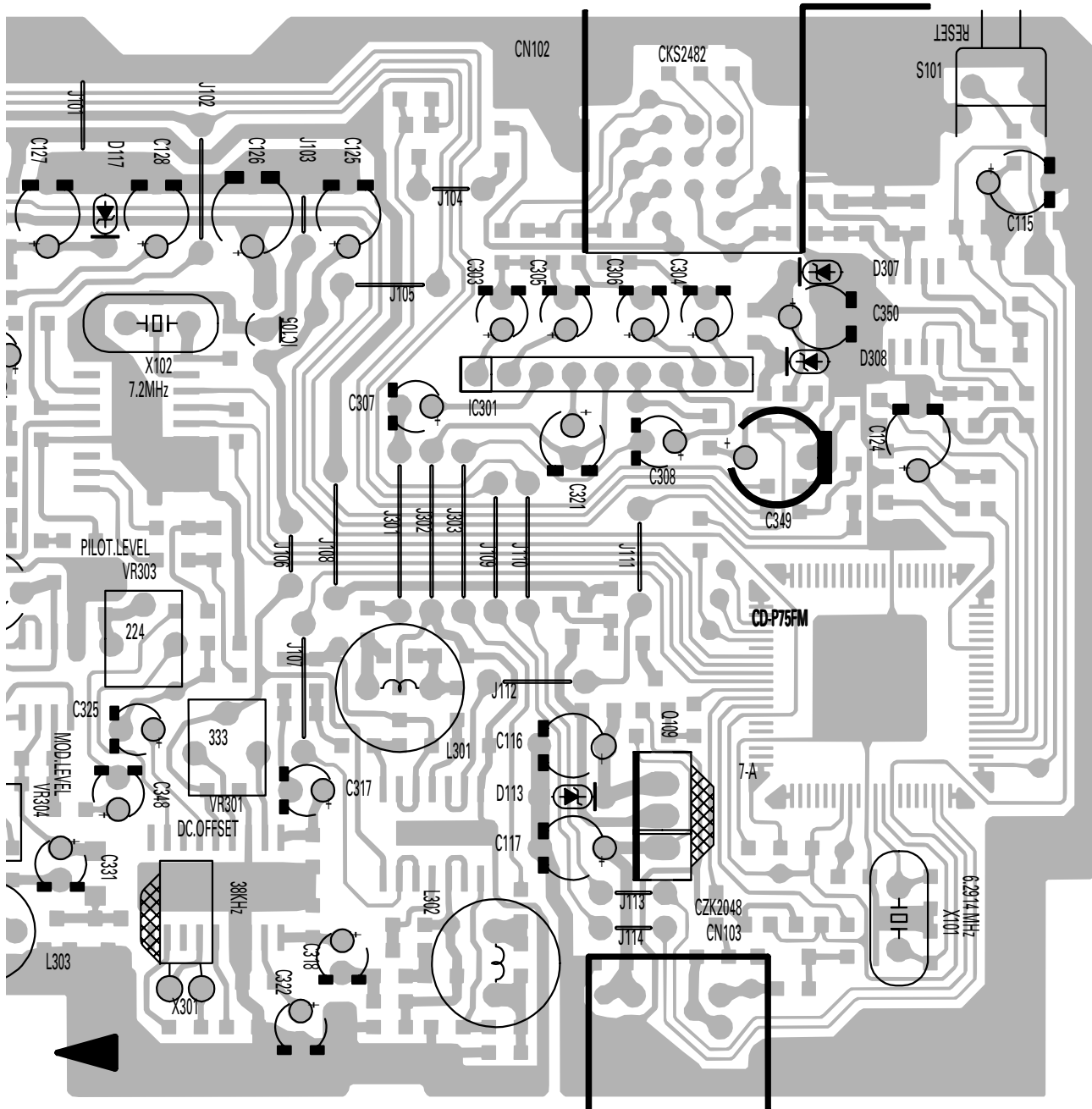
D

AF HIDEAWAY UNIT



SIDE A

IP BUS INPUT



B CN201

A

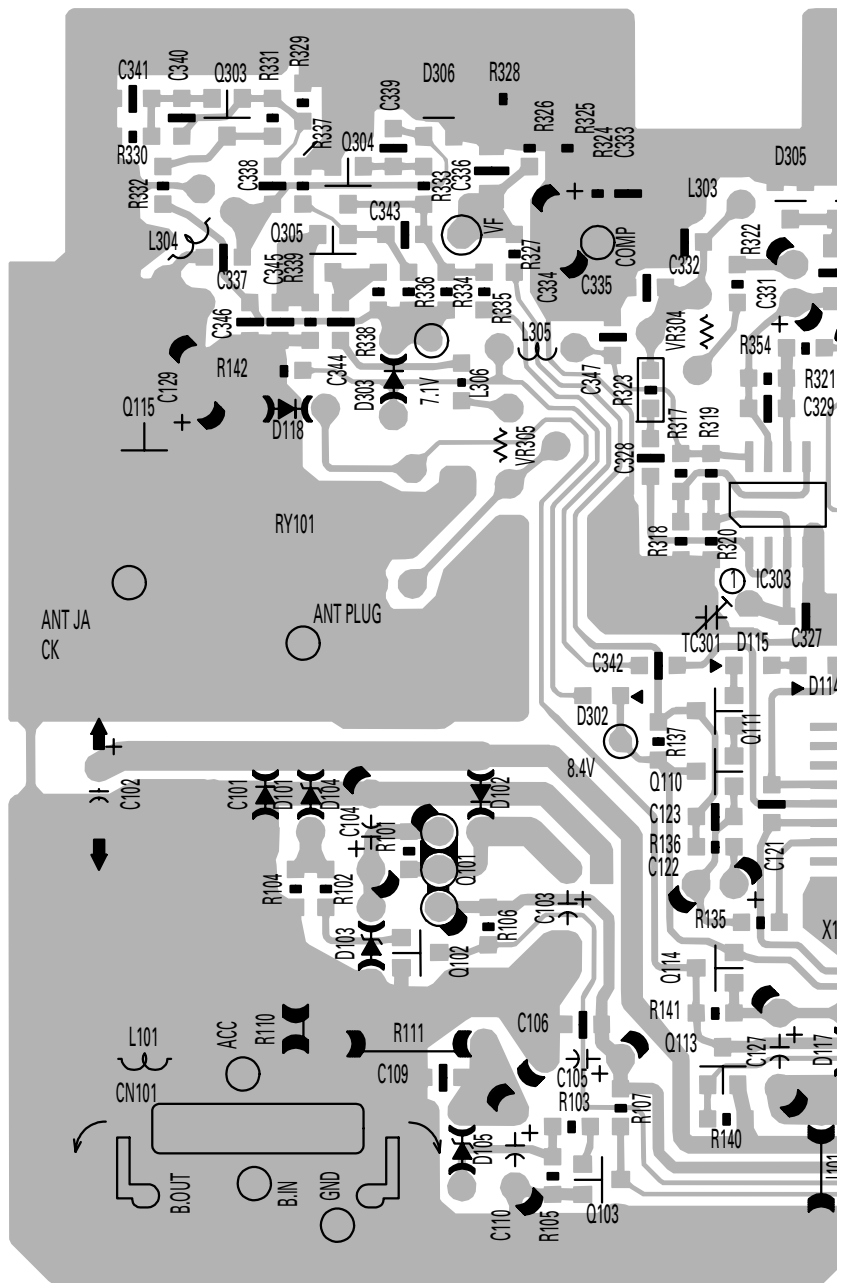
AF HAIDEAWAY UNIT

B

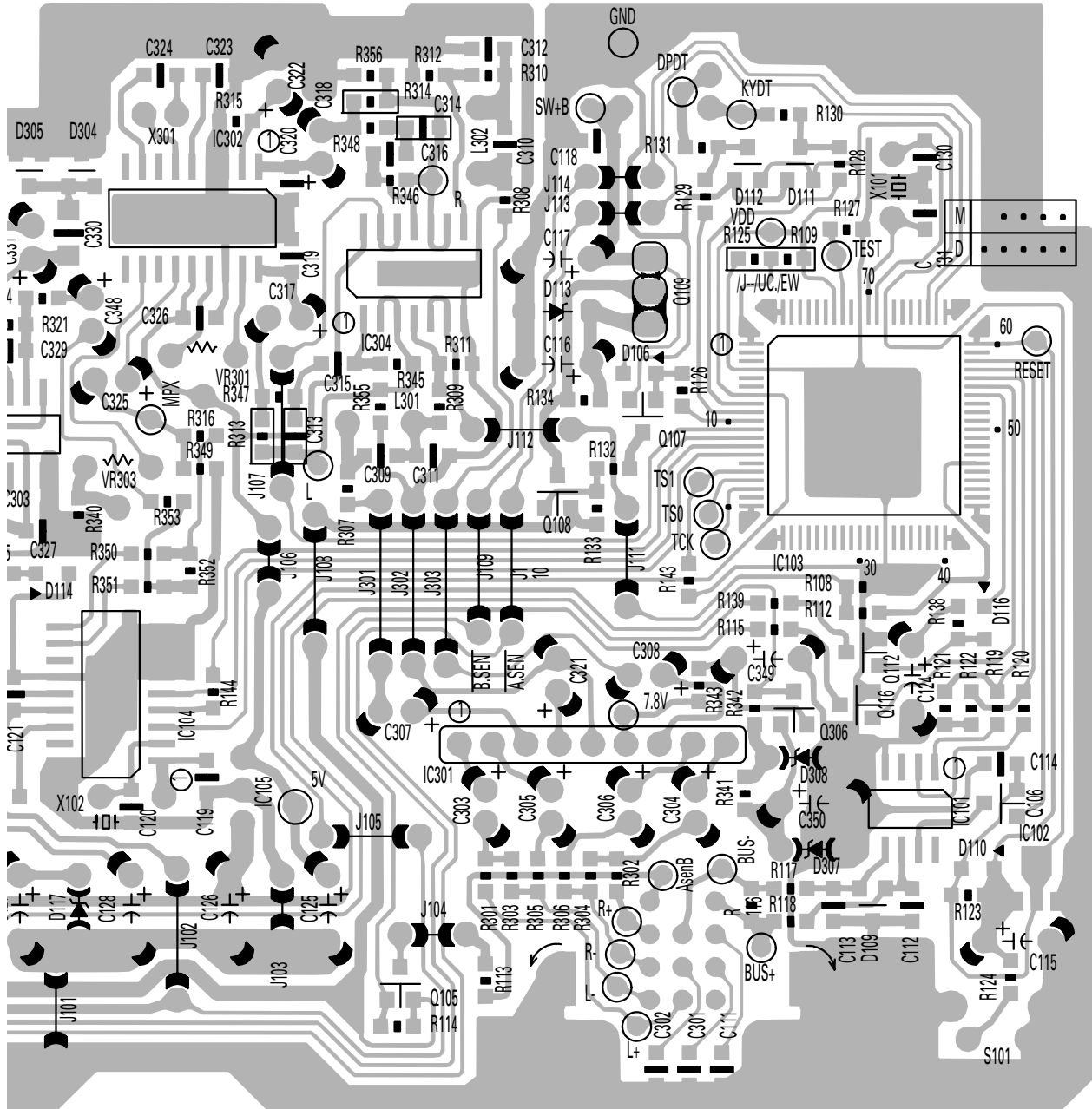
C

D

- IC, Q
- Q303
- IC302 Q304
- Q305
- IC304
- Q115
- Q107
- IC303
- IC103 Q108
- Q111
- Q112
- Q116
- IC101 Q306
- Q106
- IC102 IC104 Q101
- IC105
- Q102
- Q114
- Q113
- Q105
- Q103



SIDE B



A

9

5. ELECTRICAL PARTS LIST

NOTE:

- Parts whose parts numbers are omitted are subject to being not supplied.
- The part numbers shown below indicate chip components.

Chip Resistor

RS1/○○○○○J,RS1/○○○○○J

Chip Capacitor (except for CQS.....)

CKS....., CCS....., CSZS.....

====Circuit Symbol and No.====Part Name	Part No.	====Circuit Symbol and No.====Part Name	Part No.
AF Unit Number :CZX3224(UC) :CZX3227(EW) Unit Name :Hideaway Unit		D 307 Diode	HZS9(B2)
		D 308 Diode	HZS9L(C2)
		L 101 Choke Coil 1mH	CTH1122
		L 301 Inductor	CZT2015
		L 302 Inductor	CZT2015
		L 303 Inductor	CZT2004
		L 304 Coil	CZT2016
		L 305 Ferri-Inductor	LAU2R2M
		L 306 Inductor	LCTBR68K2125
		TC 301	CZC2031
		RY 101 Relay	CZS2026
		X 101 6.29MHz	CSS1303
		X 102 Crystal Resonator 7.200MHz	CSS1030
		X 301 38kHz	CZS2030
		S 101 Switch(RESET)	CZS2032
		VR 301 Volume 33kΩ(B)	CZC2050
		VR 303 Volume 220kΩ(B)	CZC2051
		VR 304 Volume 33kΩ(B)	CZC2050
		VR 305 Volume 1kΩ(B)	CZC2053
		RESISTORS	
		R 101	RS1/10S123J
		R 102	RS1/10S103J
		R 103	RS1/10S103J
		R 104	RS1/10S473J
		R 105	RS1/10S473J
		R 106	RS1/10S682J
		R 107	RS1/10S682J
		R 108	RS1/10S473J
		R 109	RS1/10S104J
		R 110	RD1/4PM103J
		R 111	RD1/2PM102J
		R 112	RS1/10S0R0J
		R 113	RS1/10S222J
		R 114	RS1/10S472J
		R 115	RS1/10S332J
		R 116	RS1/10S620J
		R 117	RS1/10S101J
		R 118	RS1/10S101J
		R 119	RS1/10S102J
		R 120	RS1/10S102J
		R 121	RS1/10S473J
		R 122	RS1/10S473J
		R 123	RS1/10S124J
		R 124	RS1/10S103J
		R 126	RS1/10S562J
		R 127	RS1/10S473J
		R 128	RS1/10S222J
		R 129	RS1/10S222J
		R 130	RS1/10S222J
		R 131	RS1/10S222J
		R 132	RS1/10S562J
		R 133	RS1/10S472J
		R 134	RS1/10S222J
		R 135	RS1/10S103J
		R 136	RS1/10S122J
IC 101 IC	PA0051AM		
IC 102 IC	S-80731AN-DV		
IC 103 IC	PD4953A		
IC 104 IC	BU2616F		
IC 105 IC	HA178L05		
IC 301 IC	TA2050S		
IC 302 IC	BA1405F		
IC 303 IC	UPC4570G		
IC 304 IC	TC4066BF		
Q 101 Transistor	2SD1858		
Q 102 Transistor	2SC2412K		
Q 103 Transistor	2SC2412K		
Q 105 Transistor	2SB1197K		
Q 106 Transistor	DTA114EK		
Q 107 Transistor	DTC114EK		
Q 108 Transistor	2SB1197K		
Q 109 Transistor	2SD2395		
Q 110 Transistor	2SC2412KLN		
Q 111 Transistor	2SC2412KLN		
Q 112 Transistor	DTC114EK		
Q 113 Transistor	2SB1197K		
Q 114 Transistor	2SD1781K		
Q 115 Transistor	DTC114GK		
Q 116 Transistor	DTC114EK		
Q 303 Transistor	2SC2413K		
Q 304 Transistor	2SC2413K		
Q 305 Transistor	2SC2413K		
Q 306 Transistor	2SD1781K		
D 101 Diode	ERA15-02		
D 102 Diode	ERA15-02		
D 103 Diode	HZS6L(B1)		
D 104 Diode	HZS7(C1)		
D 105 Diode	HZS7(C1)		
D 106 Diode	1SS355		
D 109 Diode	DAP202K		
D 110 Diode	1SS355		
D 111 Diode	DA204K		
D 112 Diode	DA204K		
D 113 Diode	HZS9(B2)		
D 114 Diode	1SS355		
D 115 Diode	1SS355		
D 116 Diode	1SS355		
D 117 Diode	HZS9L(C2)		
D 118 Diode	1SS133		
D 302 Diode	1SS355		
D 303 Diode	1SS133		
D 304 Diode	RB421D		
D 305 Diode	RB421D		
D 306 Diode	KV1440		

====Circuit Symbol and No.====Part Name	Part No.	====Circuit Symbol and No.====Part Name	Part No.
		CAPACITORS	
R 137	RS1/10S103J		
R 138	RS1/10S220J		
R 139	RS1/10S562J	C 101	EMI Filter
R 140	RS1/10S103J	C 102	1000µF/16V
R 141	RS1/10S272J	C 103	2200µF/16V
		C 104	
		C 105	
R 142	RS1/10S222J		
R 143	RS1/10S104J		
R 144	RS1/10S0R0J	C 106	
R 301	RS1/10S181J	C 109	
R 302	RS1/10S181J	C 110	
		C 111	
		C 112	
R 303	RS1/10S223J		
R 304	RS1/10S223J		
R 305	RS1/10S102J	C 113	
R 306	RS1/10S102J	C 114	
R 307	RS1/10S202J	C 115	
		C 116	
		C 117	
R 308	RS1/10S202J		
R 309	RS1/10S133J		
R 310	RS1/10S133J	C 118	
R 311	RS1/10S752J	C 119	
R 312	RS1/10S752J	C 120	
		C 121	
		C 122	
R 313 (UC)	RS1/10S563J		
R 313 (EW)	RS1/10S393J		
R 314 (UC)	RS1/10S563J	C 123	
R 314 (EW)	RS1/10S393J	C 124	
R 315	RS1/10S332J	C 125	
		C 126	
		C 127	
R 316	RS1/10S152J		
R 317	RS1/10S103J		
R 318	RS1/10S103J	C 128	
R 319	RS1/10S104J	C 129	
R 320	RS1/10S104J	C 130	
		C 131	
		C 301	
R 321	RS1/10S563J		
R 322 (UC)	RS1/10S103J		
R 322 (EW)	RS1/10S183J	C 302	
R 323	RS1/10S473J	C 303	
R 324	RS1/10S103J	C 304	
		C 305	
		C 306	
R 325	RS1/10S103J		
R 326	RS1/10S822J		
R 327	RS1/10S332J	C 307	
R 328	RS1/10S103J	C 308	
R 329	RS1/10S103J	C 309	
		C 310	
		C 311	
R 330	RS1/10S332J		
R 331	RS1/10S103J		
R 332	RS1/10S560J	C 312	
R 333	RS1/10S104J	C 313	(UC)
R 334	RS1/10S222J	C 313	(EW)
		C 314	(UC)
		C 314	(EW)
R 335	RS1/10S101J		
R 336	RS1/10S474J		
R 337	RS1/10S154J	C 315	
R 338	RS1/10S152J	C 316	
R 339	RS1/10S122J	C 317	
		C 318	
		C 319	
R 340	RS1/10S683J		
R 341	RS1/10S102J		
R 342	RS1/10S222J	C 320	
R 343	RS1/10S0R0J	C 321	
R 345	RS1/10S273J	C 322	
		C 323	
		C 324	
R 346	RS1/10S273J		
R 347	RS1/10S681J		
R 348	RS1/10S681J	C 325	
R 349	RS1/10S392J	C 326	
R 350	RS1/10S392J	C 327	
		C 328	
		C 329	
R 351	RS1/10S392J		
R 352	RS1/10S182J		
R 353	RS1/10S392J	C 330	
R 354	RS1/10S103J	C 331	
R 355	RS1/10S752J	C 332	
		C 333	
		C 334	
R 356	RS1/10S752J		

====Circuit Symbol and No.====	Part Name	Part No.
C 335		CKSQYB681K50
C 336		CKSYB105K16
C 337		CCSQCH200J50
C 338		CCSQCH100D50
C 339		CCSQCK1R0C50
C 340		CCSQCH330J50
C 341		CCSQCH180J50
C 342		CKSQYB103K50
C 343		CCSQCK1R0C50
C 344		CCSQCH3R0C50
C 345		CKSQYB103K50
C 346		CKSQYB103K50
C 347		CKSQYB103K50
C 348		CEJA1R0M50
C 349		CEAS471M10
C 350		CEAS470M16

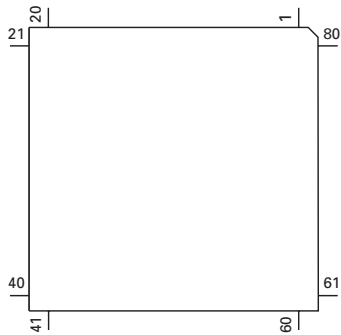
GENERAL INFORMATION

IC

IC's marked by* are MOS type.

Be careful in handling them because they are very liable to be damaged by electrostatic induction.

*PD4953A



● Pin Functions (PD4953A)

Pin No.	Pin Name	I/O	Format	Function and Operation
1	MODEL	I		Model select input
2,3	NC			Not used
4	AVSS			A/D GND
5,6	NC			Not used
7	AVREF1			VSS
8	KYDT	I		Data input
9	DPDT	O	C	Data output
10	SWVDD	O	C	Grille power supply control output
11	PREN	O	C	Pre-emphasis output
12	PLDO	O	C	PLL data output
13	PLCK	O	C	PLL clock output
14	PLCE	O	C	PLL CE output
15	NC			Not used
16	TSI	I		Test program serial input
17	TSO	O	C	Test program serial output
18	TCK	I		Test program serial clock
19-32	NC			Not used
33	VSS			GND
34-41	NC			Not used
42	BUSMUTE	O	C	BUS mute output
43-45	NC			Not used
46	MUTE	O	C	Mute output
47-53	NC			Not used
54	SYSPW	O	C	System power supply control output
55	ASENBO	O	C	Slave power supply control output
56	TX	O	C	IP BUS data output
57	RX	I		IP BUS data input
58	IPPW	O	C	Power supply control output for IP BUS interface IC
59	NC			Not used
60	RESET			Reset
61	NC			Not used
62	BSENS	I		Back up power sense input
63	ASENS	I		ACC power sense input
64-67	NC			Not used
68	VDD			Power supply
69	X2			Crystal oscillator connection pin
70	X1			Crystal oscillator connection pin
71	IC			GND
72	NC			Not used
73	TESTIN	I		Test program mode input
74	AVDD			Positive power supply terminal for analog circuit
75	AVREF0			GND
76-80	NC			Not used