

Pioneer

Service Manual



ORDER NO.
CRT2529

AUDIO VIDEO SELECTOR

CD-VS33 €

CONTENTS

1. SAFETY INFORMATION.....	2	6. ADJUSTMENT.....	22
2. EXPLODED VIEWS AND PARTS LIST	2	7. GENERAL INFORMATION.....	23
3. BLOCK DIAGRAM AND SCHEMATIC DIAGRAM	8	7.1 IC	23
4. PCB CONNECTION DIAGRAM.....	14	8. OPERATIONS AND SPECIFICATIONS.....	25
5. ELECTRICAL PARTS LIST.....	20		

PIONEER CORPORATION 4-1, Meguro 1-Chome, Meguro-ku, Tokyo 153-8654, Japan
PIONEER ELECTRONICS SERVICE INC. P.O.Box 1760, Long Beach, CA 90801-1760 U.S.A.
PIONEER EUROPE NV Haven 1087 Keetberglaan 1, 9120 Melsele, Belgium
PIONEER ELECTRONICS ASIACENTRE PTE.LTD. 253 Alexandra Road, #04-01, Singapore 159936

1. SAFETY INFORMATION

CAUTION

This service manual is intended for qualified service technicians; it is not meant for the casual do-it-yourselfer. Qualified technicians have the necessary test equipment and tools, and have been trained to properly and safely repair complex products such as those covered by this manual.

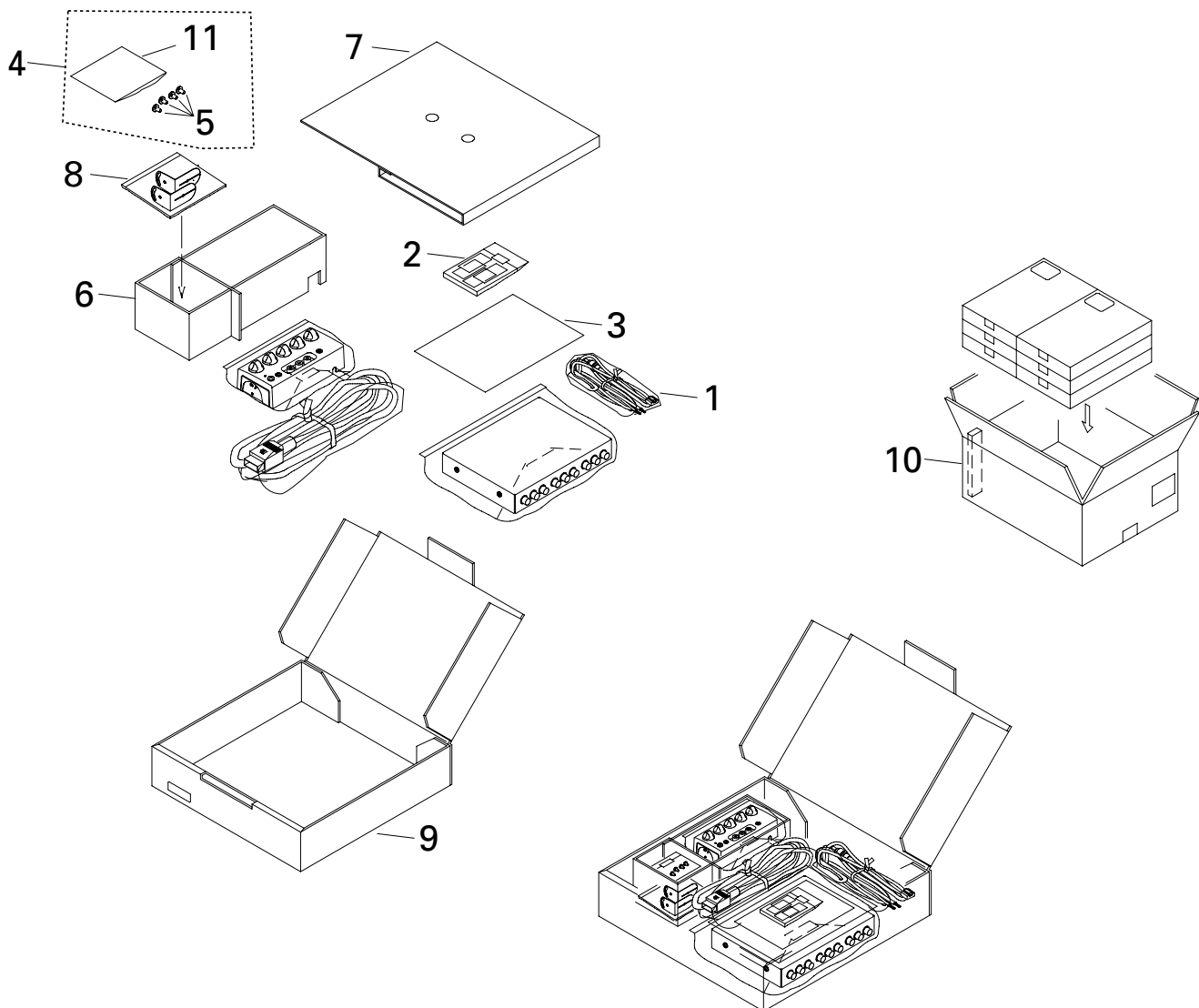
Improperly performed repairs can adversely affect the safety and reliability of the product and may void the warranty. If you are not qualified to perform the repair of this product properly and safely; you should not risk trying to do so and refer the repair to a qualified service technician.

WARNING

This product contains lead in solder and certain electrical parts contain chemicals which are known to the state of California to cause cancer, birth defects or other reproductive harm.
Health & Safety Code Section 25249.6 - Proposition 65

2. EXPLODED VIEWS AND PARTS LIST

2.1 PACKING



NOTE:

- Parts marked by "*" are generally unavailable because they are not in our Master Spare Parts List.
- Screws adjacent to ∇ mark on the product are used for disassembly.

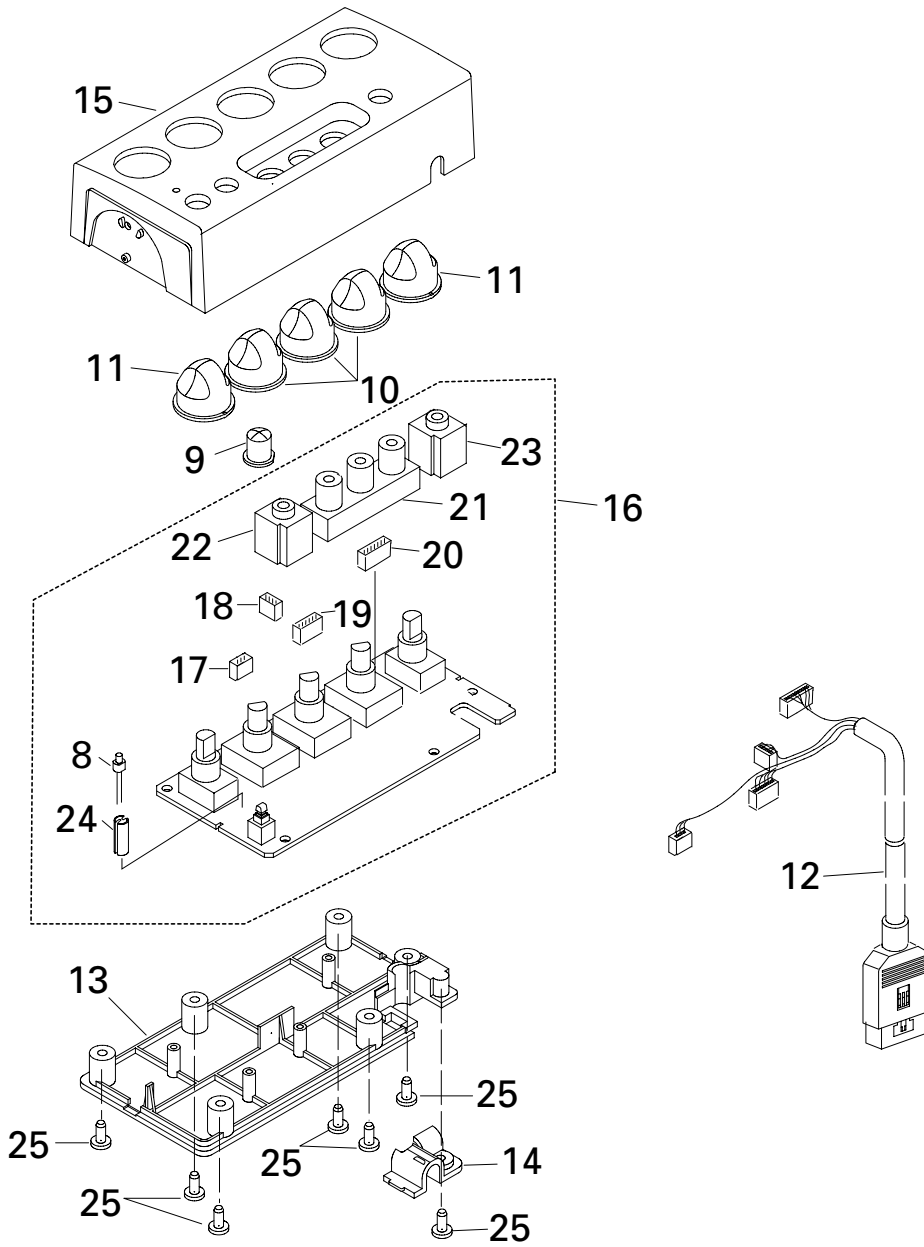
● EXTERIOR SECTION PARTS LIST

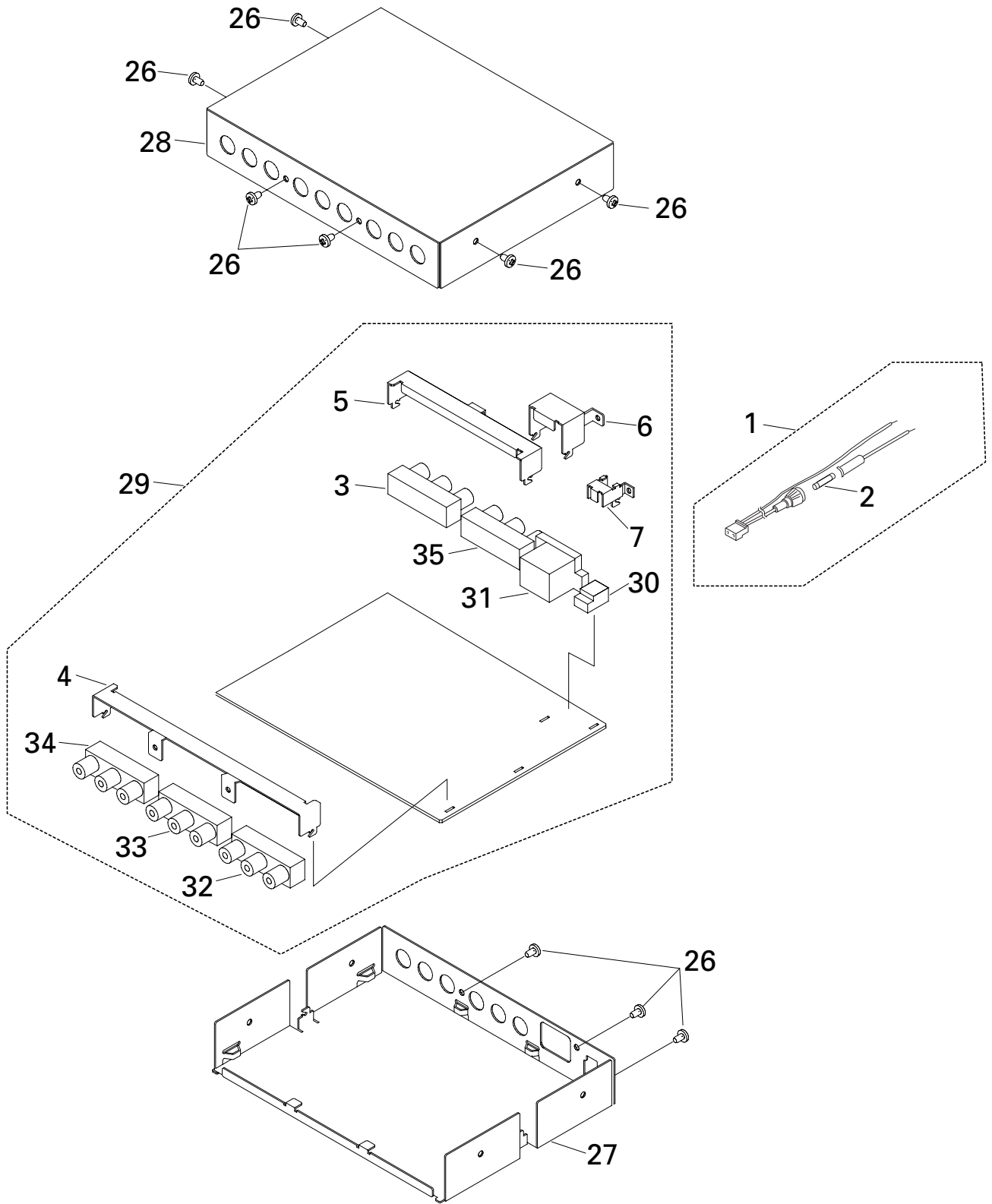
Mark No.	Description	Part No.
1	Cord Assy	CZD6026
2	Fastener Assy	CZE3262
3	Owner's Manual	CZR3210
4	Screw Assy	CZE3263
5	Screw	BPZ30P060FZK
6	Protector A	CZH6192
7	Protector B	CZH6193
8	Bracket Assy	CZX3240
9	Carton	CZH6187
10	Contain Box	CZH6188
*	11 Polyethylene Bag	CEG-127

● Owner's Manual

Model	Part No.	Language
CD-VS33/E	CZR3210	English, Spanish, German, French, Italian

2.2 EXTERIOR





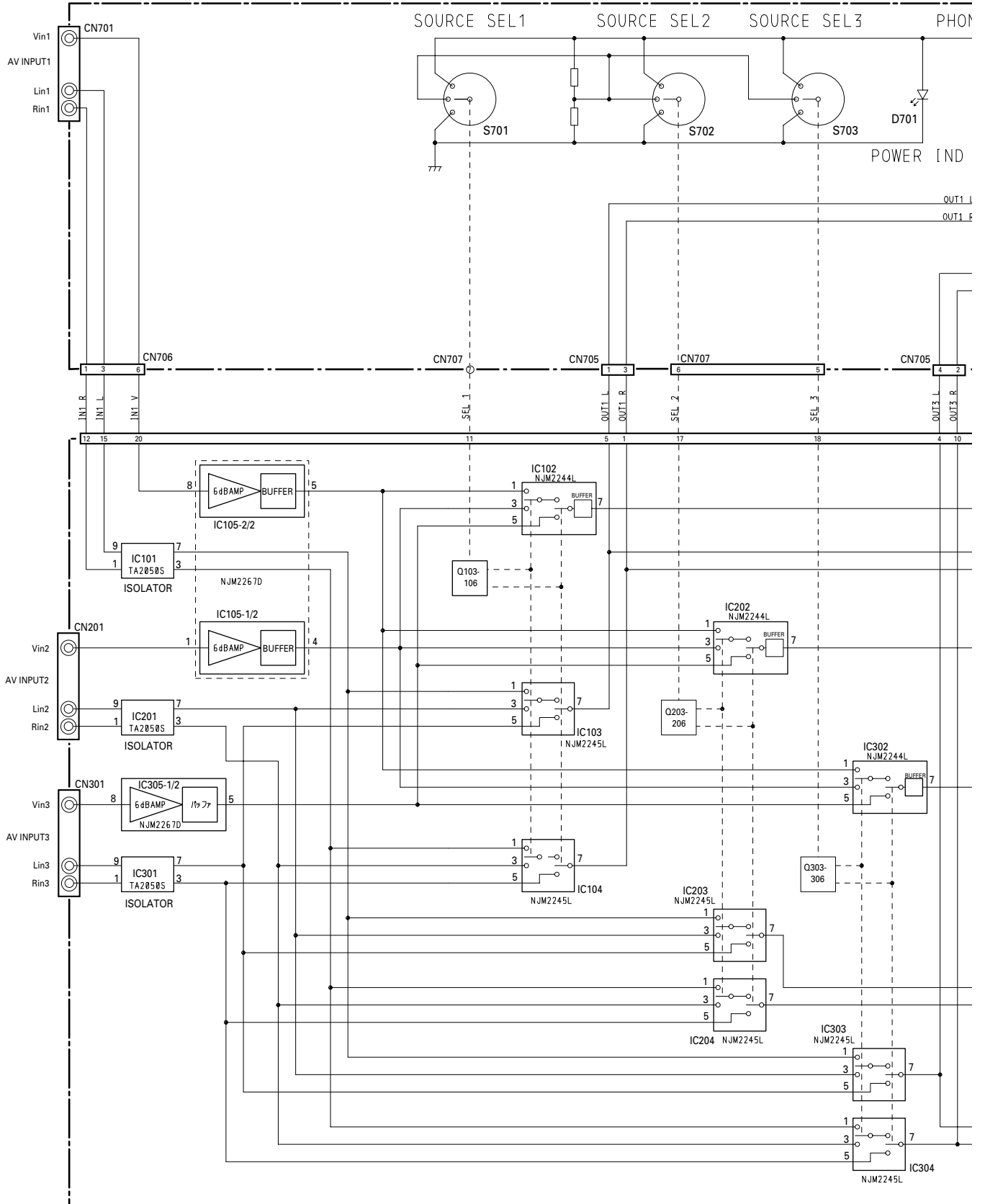
● EXTERIOR SECTION PARTS LIST

Mark No.	Description	Part No.	Mark No.	Description	Part No.
1	Cord Assy	CZD6026	26	Screw	BSZ30P060FZK
2	Fuse 1A	CEK1061	27	Chassis	CZN7637
3	Pin Jack(CN301)	CZK2067	28	Case	CZN7636
4	Bracket A	CZN7638	29	PCB Unit(Hideaway Unit)	CZW6026
5	Bracket B	CZN7639	30	Plug(CN501)	CKM1129
6	Bracket C	CZN7640	31	Connector(CN101)	CKS2684
7	Bracket D	CZN7641	32	Pin Jack(CN102)	CKS2918
8	LED(D701)	SLC-22VR	33	Pin Jack(CN202)	CKS2918
9	Button(POWER)	CZA6118	34	Pin Jack(CN302)	CKS2918
10	Button	CZA6119	35	Pin Jack(CN201)	CZK2067
11	Button	CZA6120			
12	Cord Assy	CZD6024			
13	Cover	CZN7643			
14	Cover	CZN7644			
15	Case	CZN7642			
16	PCB Unit(Control Unit)	CZW6025			
17	Plug(CN704)	CZK2077			
18	Plug(CN705)	CZK2078			
19	Plug(CN706)	CZK2079			
20	Plug(CN707)	CZK2080			
21	Pin Jack(CN701)	CZK2081			
22	Jack(CN702)	CZK2082			
23	Jack(CN703)	CZK2082			
24	LED Spacer	LH-5-12			
25	Screw	PPZ26P080FZK			

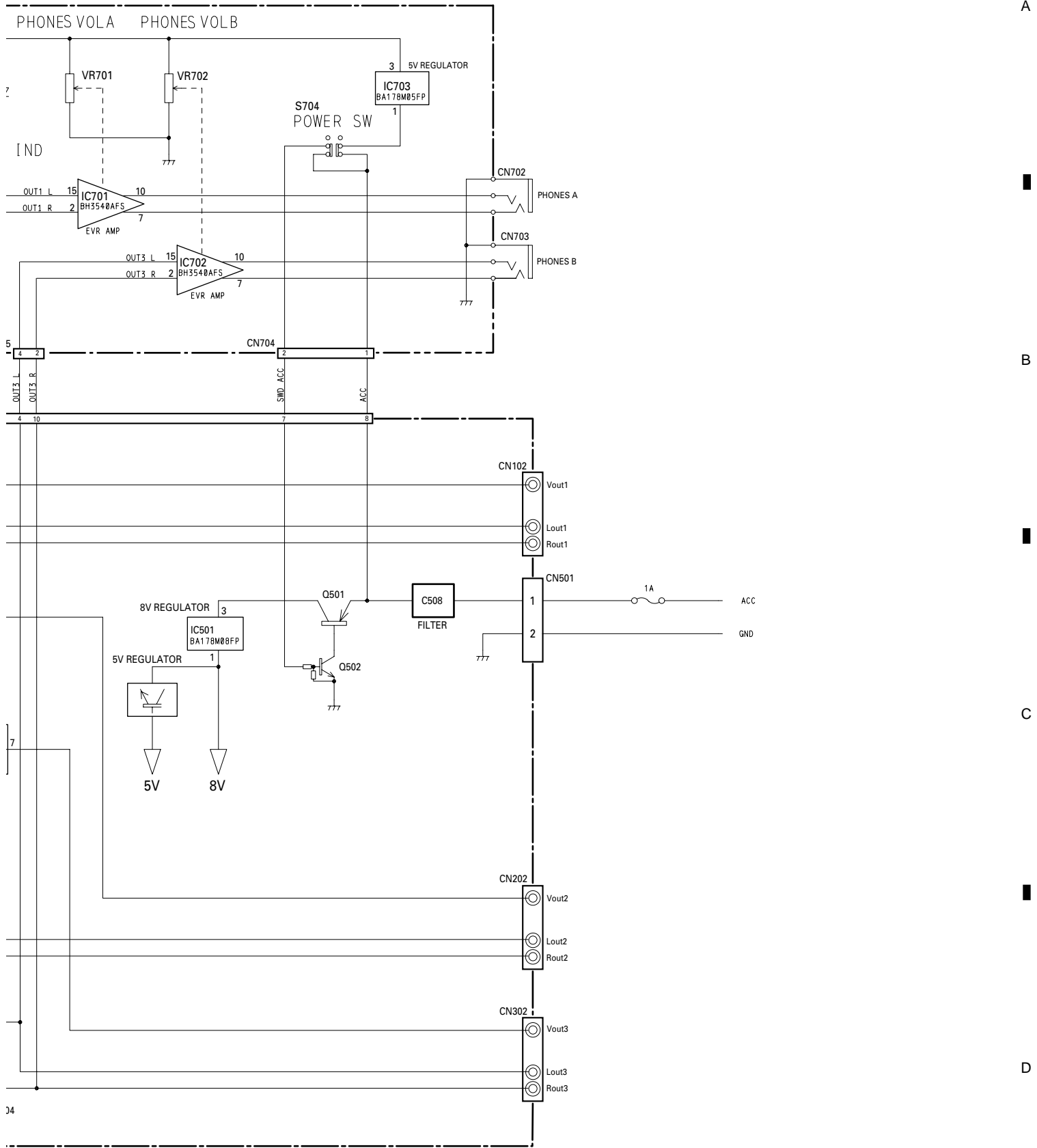
3. BLOCK DIAGRAM AND SCHEMATIC DIAGRAM

3.1 BLOCK DIAGRAM

B PCB UNIT (CONTROL UNIT)



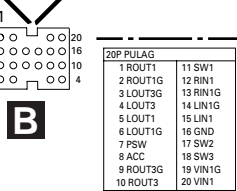
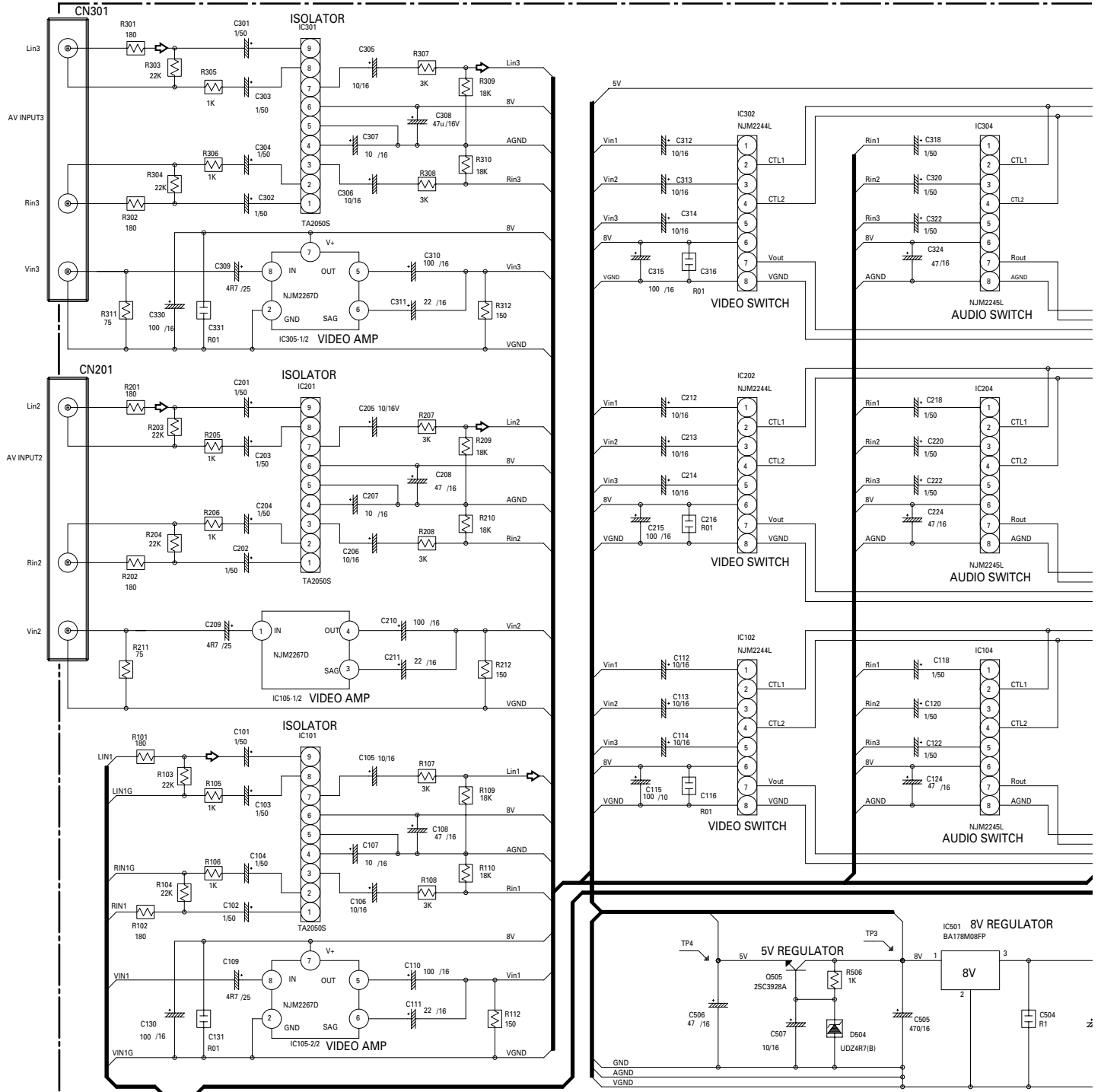
A PCB UNIT (HIDEAWAY UNIT)

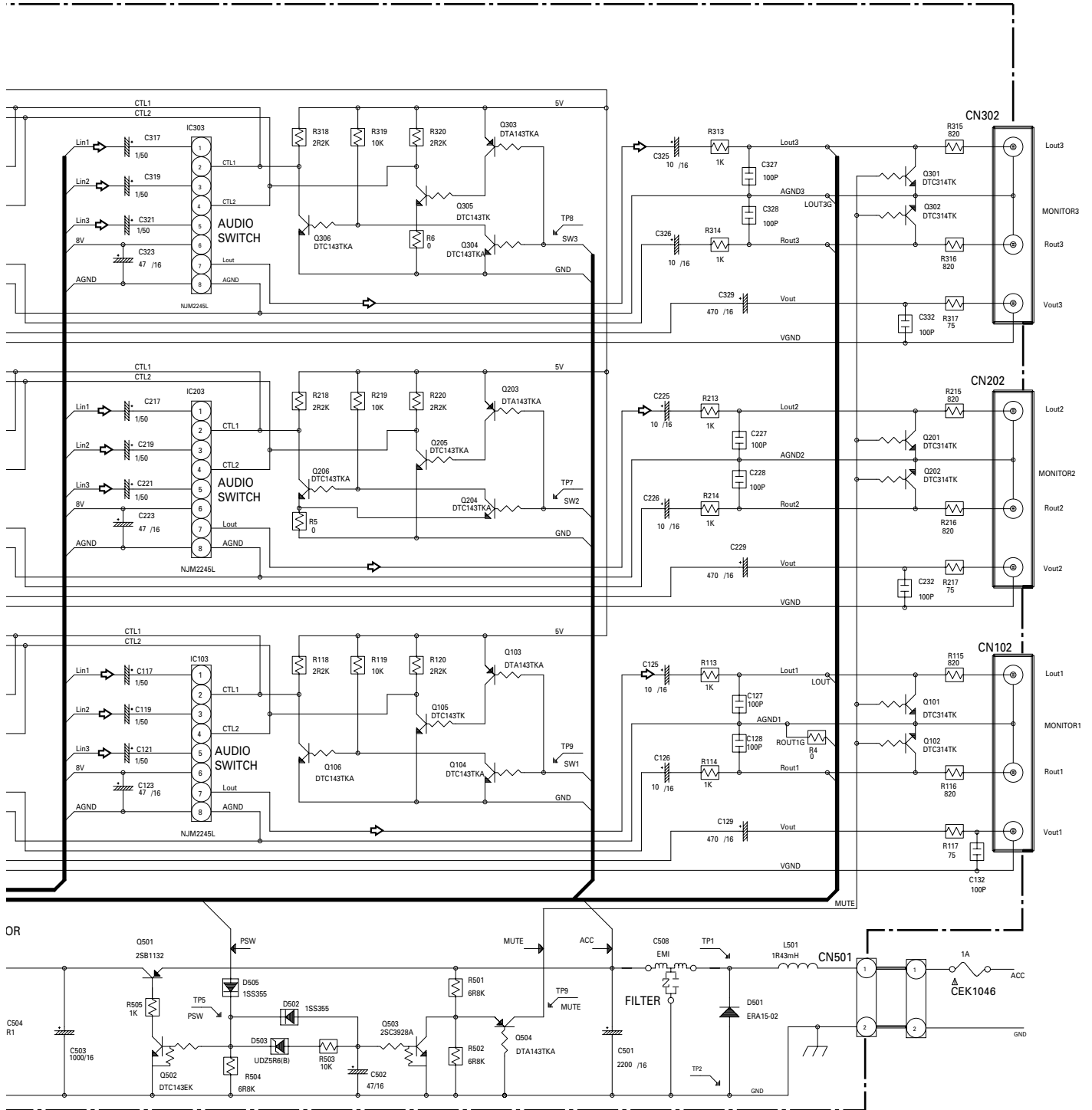


3.2 PCB UNIT(HIDEAWAY UNIT)

Note: When ordering service parts, be sure to refer to "EXPLODED VIEWS AND PARTS LIST" or "ELECTRICAL PARTS LIST".

A PCB UNIT(HIDEAWAY UNIT)





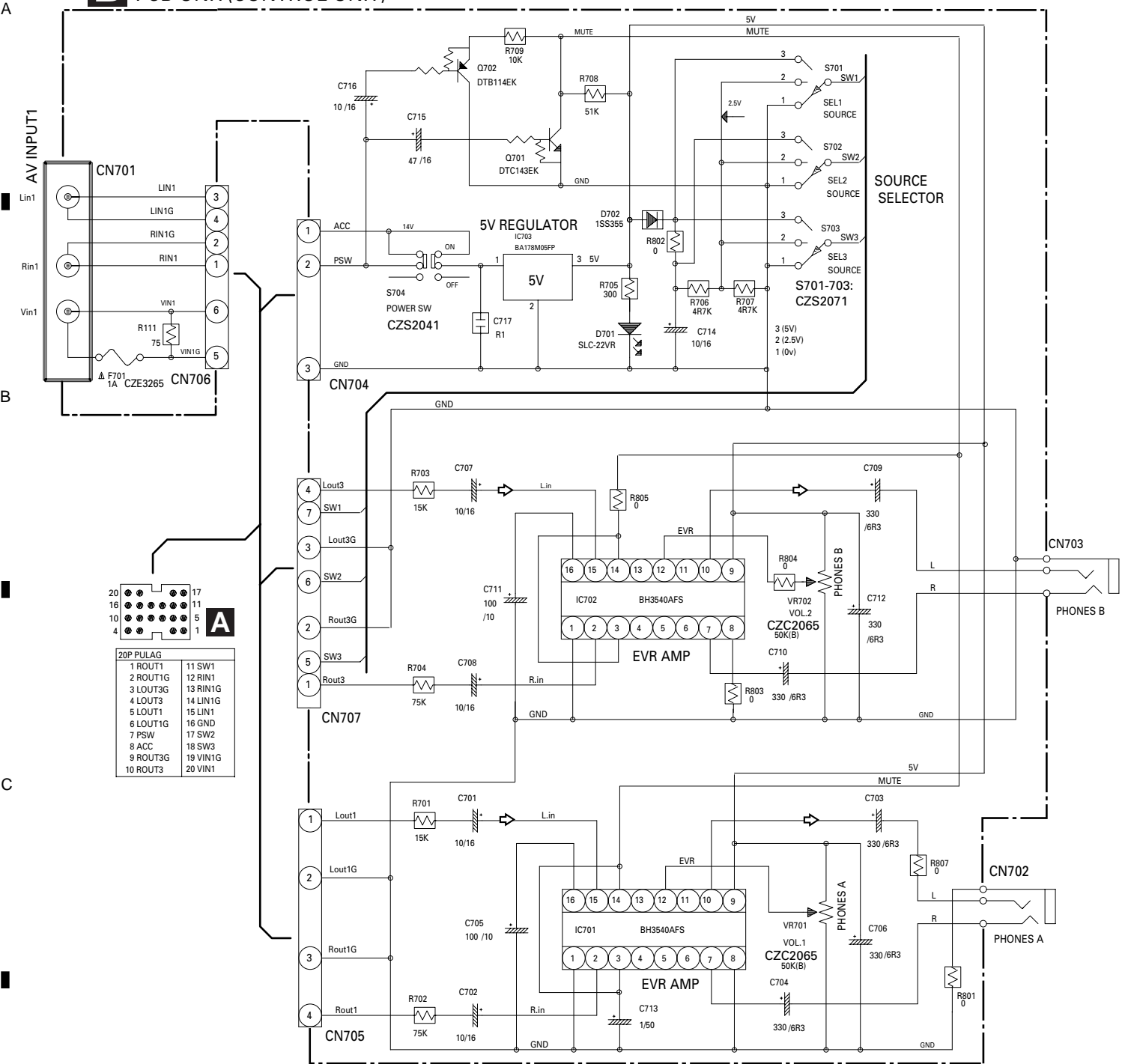
NOTE :
 □ Symbol indicates a resistor.
 No differentiation is made between chip resistors and discrete resistors.
 ⊖ Symbol indicates a capacitor.
 No differentiation is made between chip capacitors and discrete capacitors.

The Δ mark found on some component parts indicates the importance of the safety factor of the part. Therefore, when replacing, be sure to use parts of identical designation.
 Decimal points for resistor and capacitor fixed values are expressed as:
 2.2→2R2
 0.22→R022



3.3 PCB UNIT(CONTROL UNIT)

B PCB UNIT(CONTROL UNIT)



20P PULAG

1 ROUT1	11 SW1
2 ROUT1G	12 RIN1
3 LOU3G	13 RIN1G
4 LOU3	14 LIN1G
5 LOU1	15 LIN1
6 LOU1G	16 GND
7 PSW	17 SW2
8 ACC	18 SW3
9 ROUT3G	19 VIN1G
10 ROUT3	20 VIN1

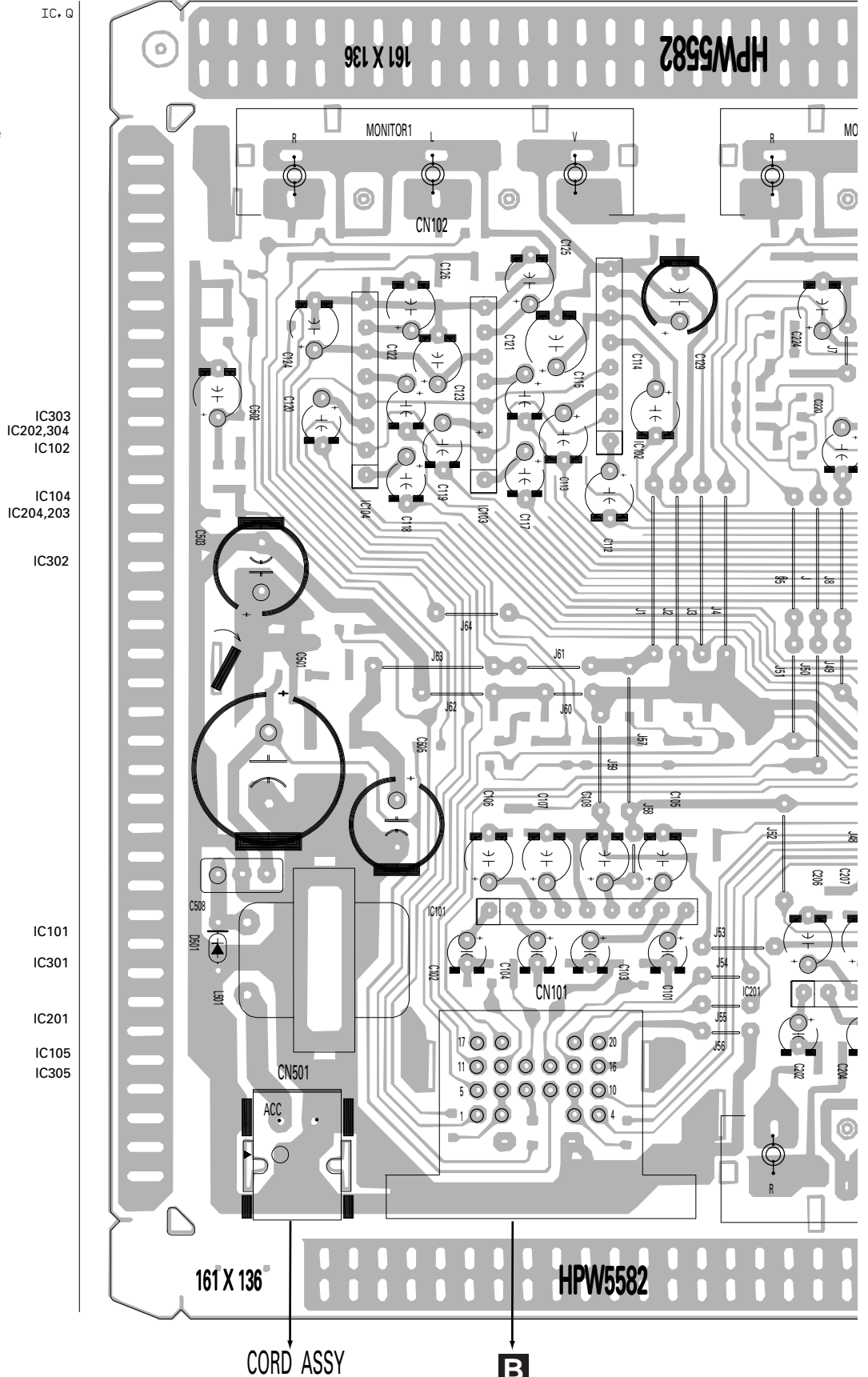
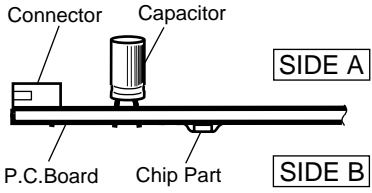
4. PCB CONNECTION DIAGRAM

4.1 PCB UNIT(HIDEAWAY UNIT)

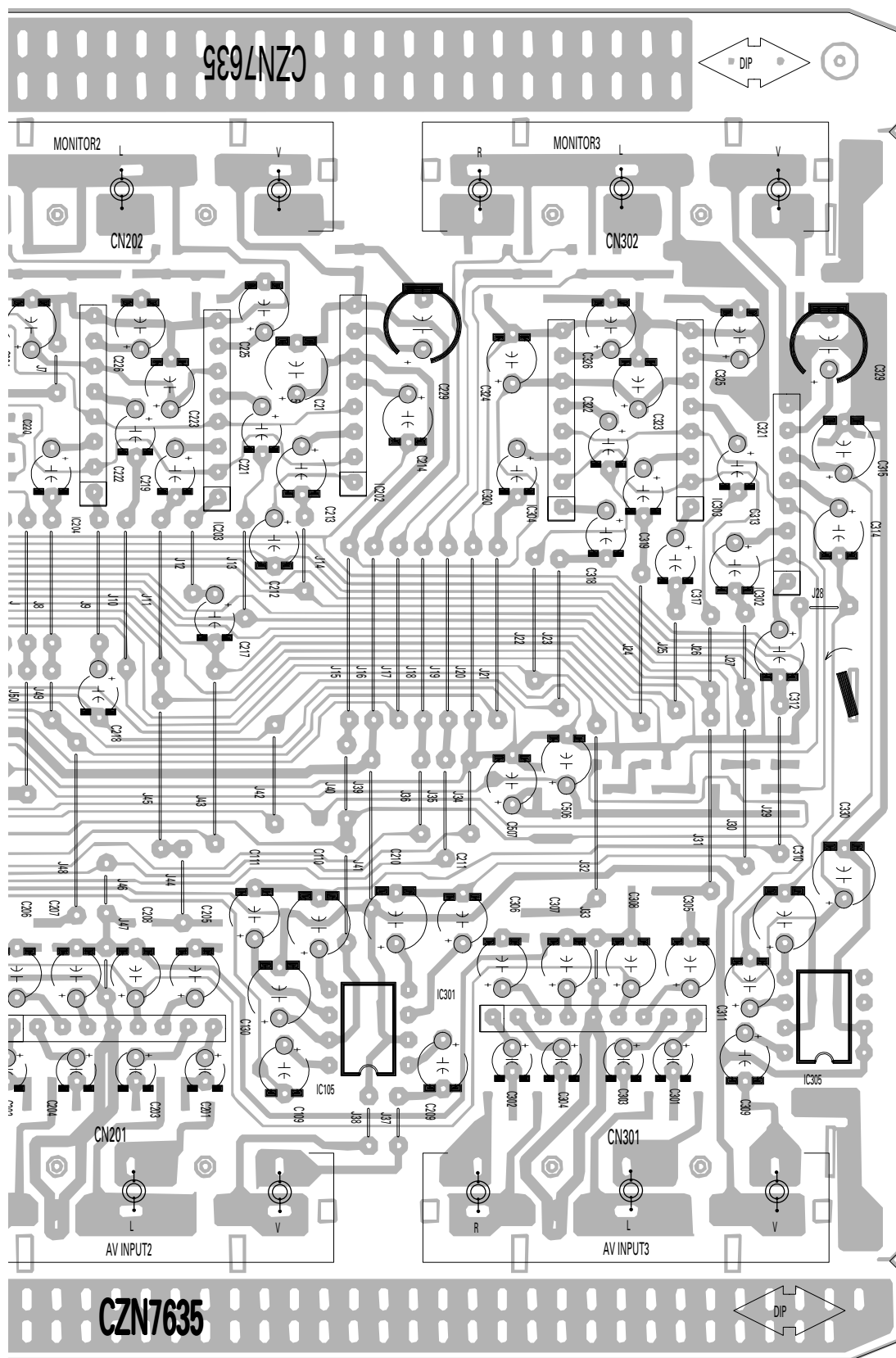
A PCB UNIT(HIDEAWAY UNIT)

NOTE FOR PCB DIAGRAMS

1. The parts mounted on this PCB include all necessary parts for several destination. For further information for respective destinations, be sure to check with the schematic diagram.
2. Viewpoint of PCB diagrams



SIDE A



A
B
C
D

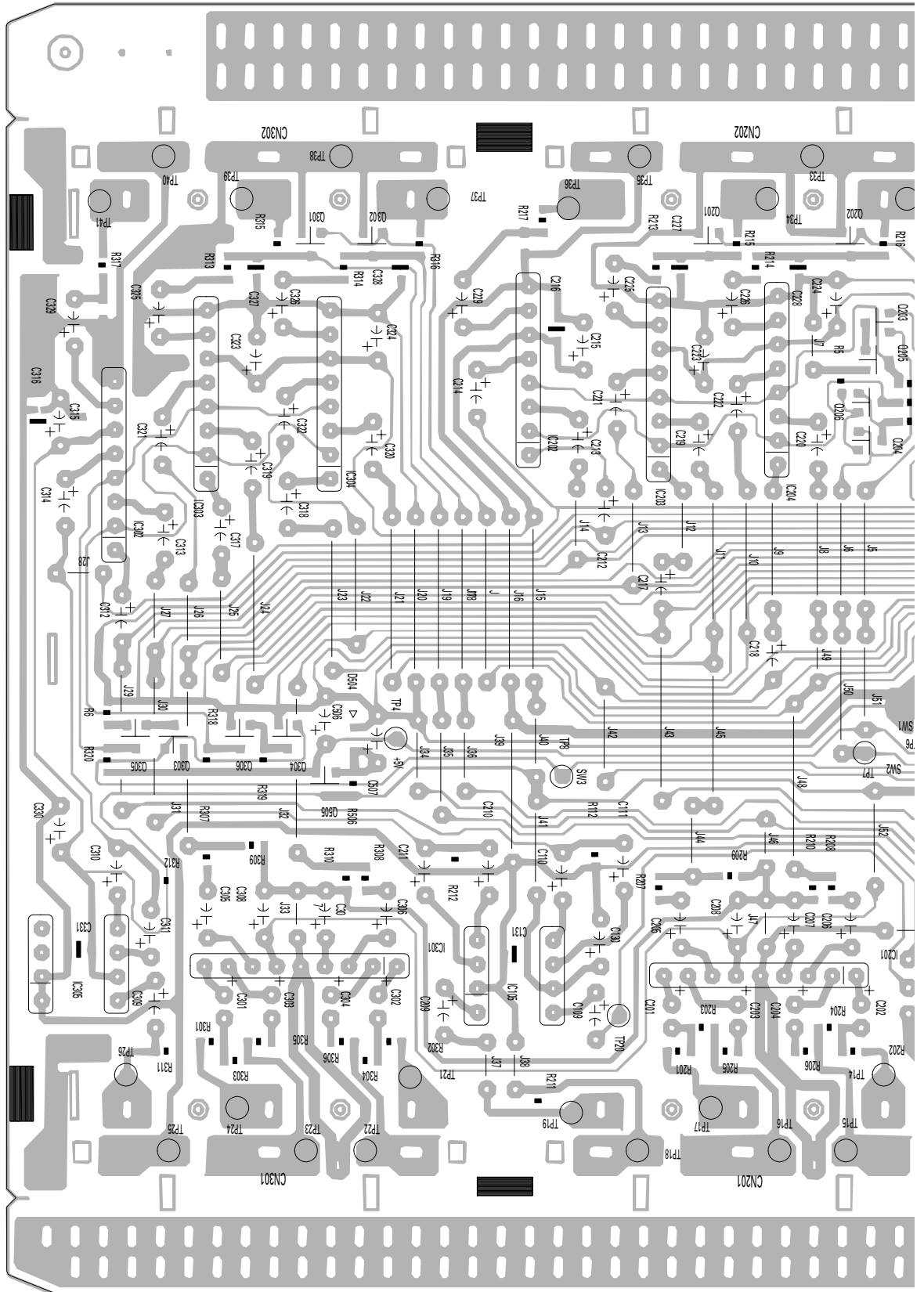
A PCB UNIT(HIDEAWAY UNIT)

A

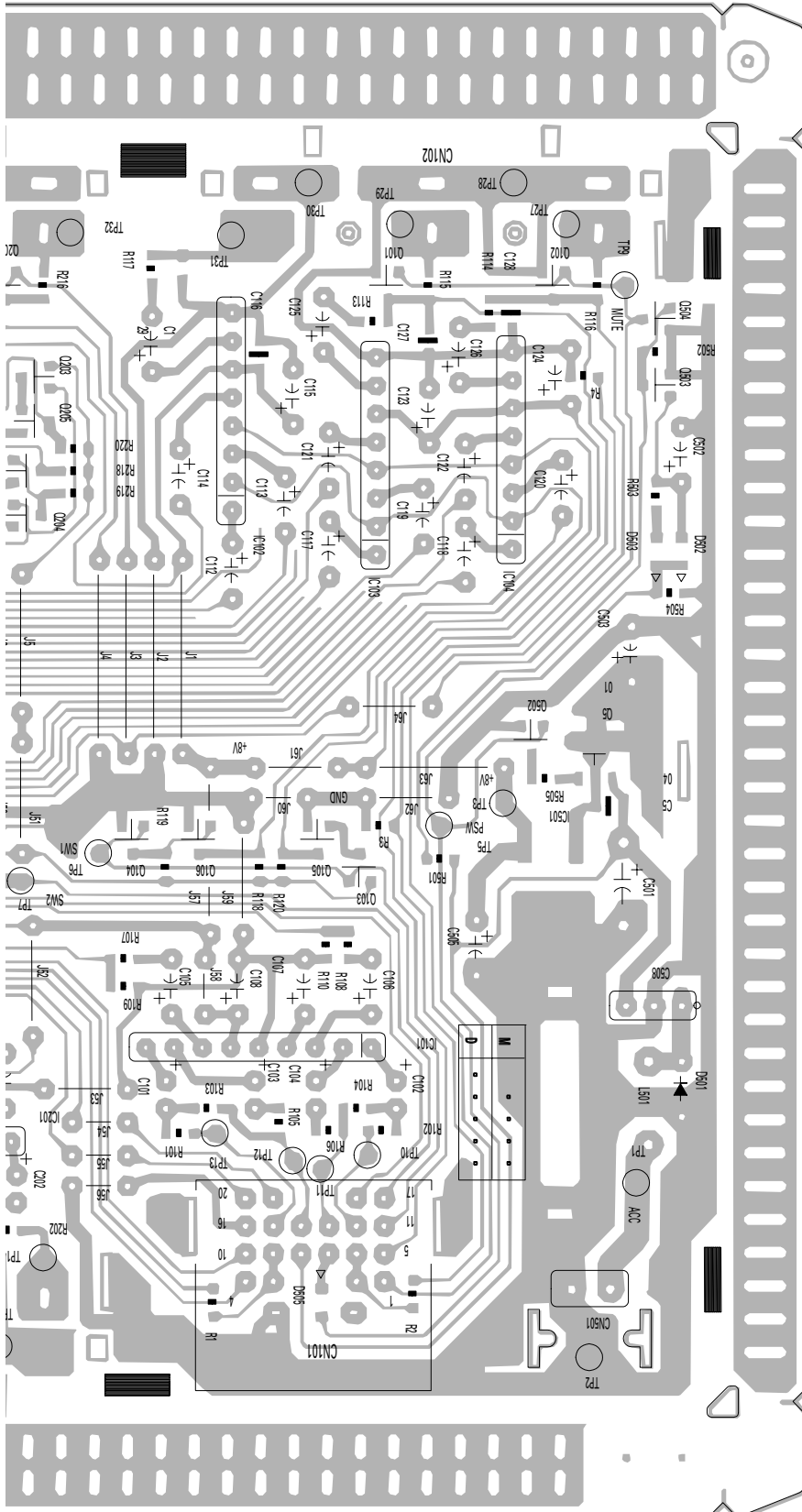
B

C

D



SIDE B



- Q302,301
- Q202,201
- Q102,101
- Q504
- Q203,205
- Q503
- Q204,206
- IC102
- IC204,203
- IC104,103
- IC304,303
- IC302
- Q502
- IC501
- Q305,306
- Q303,304
- Q105,106
- Q103,104
- Q505
- IC101
- IC201
- IC305
- IC, Q

A

B

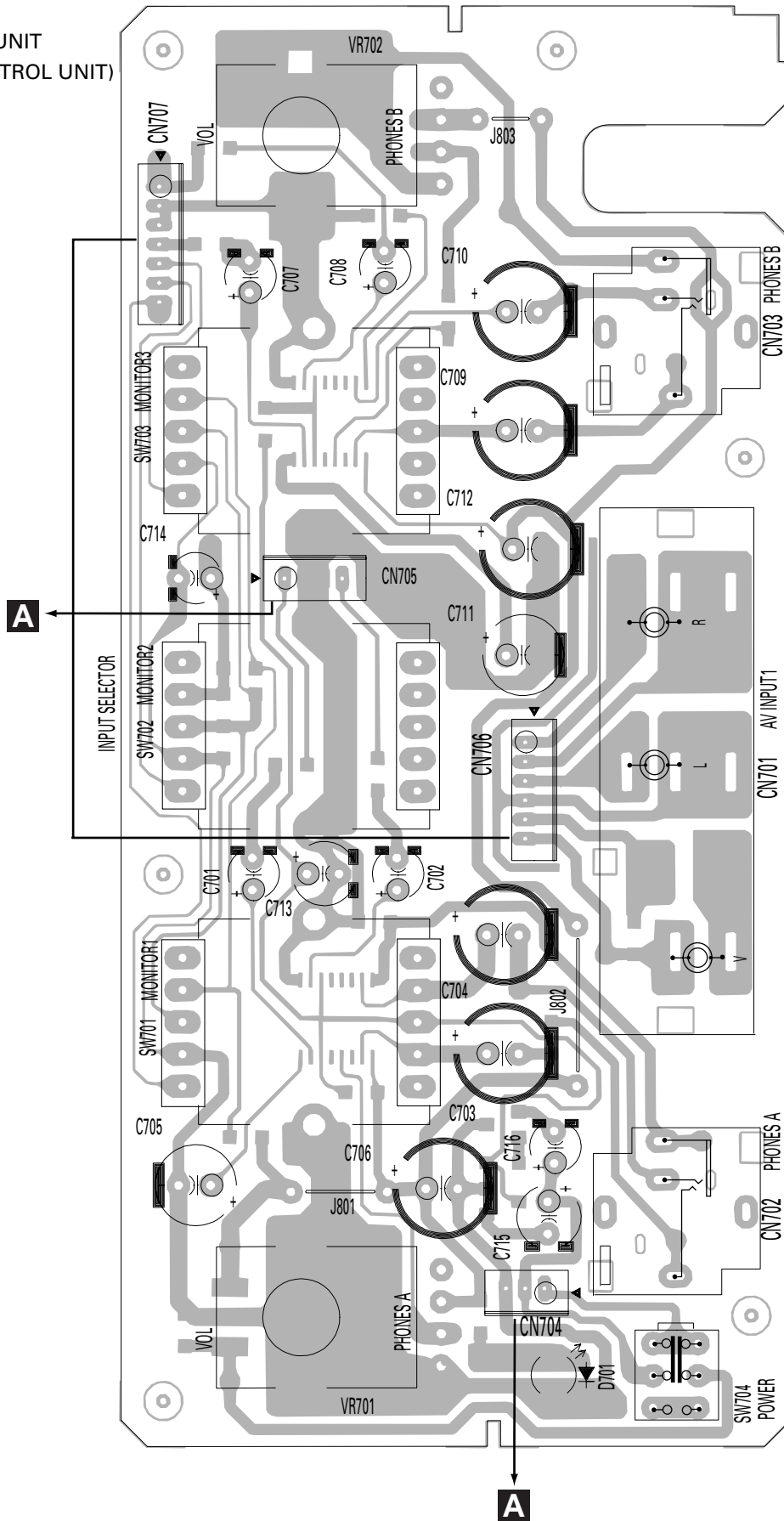
C

D

4.2 PCB UNIT(CONTROL UNIT)

SIDE A

B PCB UNIT
(CONTROL UNIT)

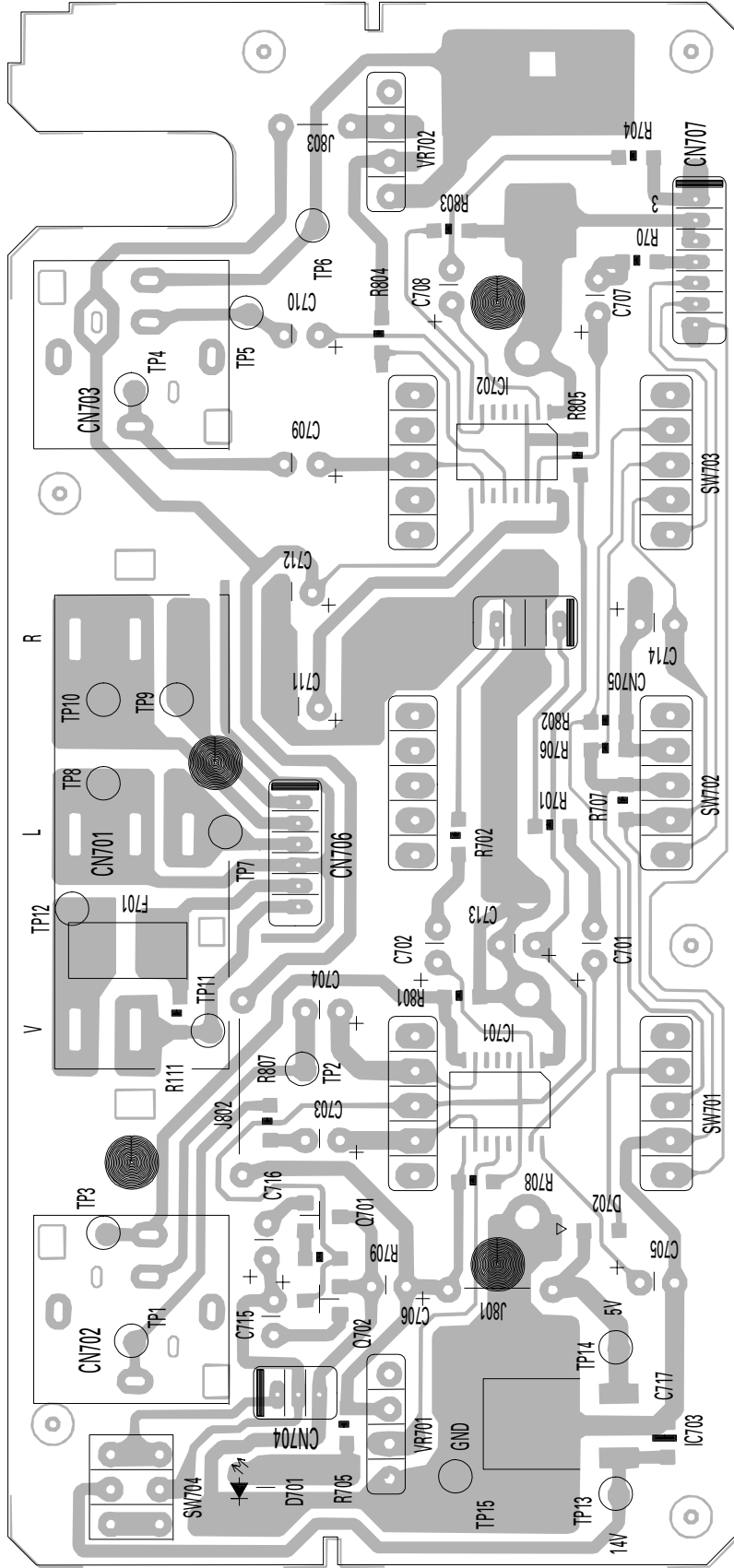


A

B

SIDE B

B PCB UNIT
(CONTROL UNIT)



IC, Q

Q701
Q702

IC701
IC702

IC703

B

5. ELECTRICAL PARTS LIST

NOTE:

● Parts whose parts numbers are omitted are subject to being not supplied.

● The part numbers shown below indicate chip components.

Chip Resistor

RS1/OSOOOJ,RS1/OOSOOOJ

Chip Capacitor (except for CQS.....)

CKS....., CCS....., CSZS.....

====Circuit Symbol and No.===Part Name Part No. =====Circuit Symbol and No.===Part Name Part No.

A Unit Number :
Unit Name : PCB Unit(Hideaway Unit)

MISCELLANEOUS

IC	101	IC	TA2050S
IC	102	IC	NJM2244L
IC	103	IC	NJM2245L
IC	104	IC	NJM2245L
IC	105	IC	NJM2267D
IC	201	IC	TA2050S
IC	202	IC	NJM2244L
IC	203	IC	NJM2245L
IC	204	IC	NJM2245L
IC	301	IC	TA2050S
IC	302	IC	NJM2244L
IC	303	IC	NJM2245L
IC	304	IC	NJM2245L
IC	305	IC	NJM2267D
IC	501	IC	BA178M08FP
Q	101	Transistor	DTC314TK
Q	102	Transistor	DTC314TK
Q	103	Transistor	DTA143TKA
Q	104	Transistor	DTC143TKA
Q	105	Transistor	DTC143TKA
Q	106	Transistor	DTC143TKA
Q	201	Transistor	DTC314TK
Q	202	Transistor	DTC314TK
Q	203	Transistor	DTA143TKA
Q	204	Transistor	DTC143TKA
Q	205	Transistor	DTC143TKA
Q	206	Transistor	DTC143TKA
Q	301	Transistor	DTC314TK
Q	302	Transistor	DTC314TK
Q	303	Transistor	DTA143TKA
Q	304	Transistor	DTC143TKA
Q	305	Transistor	DTC143TKA
Q	306	Transistor	DTC143TKA
Q	501	Transistor	2SB1132
Q	502	Transistor	DTC143EK
Q	503	Transistor	2SC3928A
Q	504	Transistor	DTA143TKA
Q	505	Transistor	2SC3928A
D	501	Diode	ERA15-02
D	502	Diode	1SS355
D	503	Diode	UDZ5R6(B)
D	504	Diode	UDZ4R7(B)
D	505	Diode	1SS355
L	501	Choke Coil 1.43mH	CTH1041

RESISTORS

R	1	RS1/10S0R0J
R	2	RS1/10S0R0J
R	3	RS1/10S0R0J
R	4	RS1/10S0R0J
R	5	RS1/10S0R0J
R	6	RS1/10S0R0J
R	101	RS1/10S181J
R	102	RS1/10S181J
R	103	RS1/10S223J
R	104	RS1/10S223J
R	105	RS1/10S102J
R	106	RS1/10S102J
R	107	RS1/10S302J
R	108	RS1/10S302J
R	109	RS1/10S183J
R	110	RS1/10S183J
R	112	RS1/10S151J
R	113	RS1/10S102J
R	114	RS1/10S102J
R	115	RS1/10S821J
R	116	RS1/10S821J
R	117	RS1/10S750J
R	118	RS1/10S222J
R	119	RS1/10S103J
R	120	RS1/10S222J
R	201	RS1/10S181J
R	202	RS1/10S181J
R	203	RS1/10S223J
R	204	RS1/10S223J
R	205	RS1/10S102J
R	206	RS1/10S102J
R	207	RS1/10S302J
R	208	RS1/10S302J
R	209	RS1/10S183J
R	210	RS1/10S183J
R	211	RS1/10S750J
R	212	RS1/10S151J
R	213	RS1/10S102J
R	214	RS1/10S102J
R	215	RS1/10S821J
R	216	RS1/10S821J
R	217	RS1/10S750J
R	218	RS1/10S222J
R	219	RS1/10S103J
R	220	RS1/10S222J
R	301	RS1/10S181J
R	302	RS1/10S181J
R	303	RS1/10S223J
R	304	RS1/10S223J
R	305	RS1/10S102J
R	306	RS1/10S102J
R	307	RS1/10S302J
R	308	RS1/10S302J
R	309	RS1/10S183J
R	310	RS1/10S183J

====Circuit Symbol and No.====Part Name	Part No.	====Circuit Symbol and No.====Part Name	Part No.
R 311	RS1/10S750J	C 219	CEJA1R0M50
R 312	RS1/10S151J	C 220	CEJA1R0M50
R 313	RS1/10S102J	C 221	CEJA1R0M50
R 314	RS1/10S102J	C 222	CEJA1R0M50
R 315	RS1/10S821J	C 223	CEAS470M16
R 316	RS1/10S821J	C 224	CEAS470M16
R 317	RS1/10S750J	C 225	CEAS100M16
R 318	RS1/10S222J	C 226	CEAS100M16
R 319	RS1/10S103J	C 227	CCSQCH101J50
R 320	RS1/10S222J	C 228	CCSQCH101J50
R 501	RS1/10S682J	C 229	CEAS471M16
R 502	RS1/10S682J	C 232	CCSQCH101J50
R 503	RS1/10S103J	C 301	CEJA1R0M50
R 504	RS1/10S682J	C 302	CEJA1R0M50
R 505	RS1/10S102J	C 303	CEJA1R0M50
R 506	RS1/10S102J	C 304	CEJA1R0M50
CAPACITORS			
C 101	CEJA1R0M50	C 305	CEAS100M16
C 102	CEJA1R0M50	C 306	CEAS100M16
C 103	CEJA1R0M50	C 307	CEAS100M16
C 104	CEJA1R0M50	C 308	CEAS470M16
C 105	CEAS100M16	C 309	CEAS4R7M25
C 106	CEAS100M16	C 310	CEAS101M16
C 107	CEAS100M16	C 311	CEAS220M16
C 108	CEAS470M16	C 312	CEAS100M16
C 109	CEAS4R7M25	C 313	CEAS100M16
C 110	CEAS101M16	C 314	CEAS100M16
C 111	CEAS220M16	C 315	CEAS101M16
C 112	CEAS100M16	C 316	CKSQYB103K50
C 113	CEAS100M16	C 317	CEJA1R0M50
C 114	CEAS100M16	C 318	CEJA1R0M50
C 115	CEAS101M16	C 319	CEJA1R0M50
C 116	CKSQYB103K50	C 320	CEJA1R0M50
C 117	CEJA1R0M50	C 321	CEJA1R0M50
C 118	CEJA1R0M50	C 322	CEJA1R0M50
C 119	CEJA1R0M50	C 323	CEAS470M16
C 120	CEJA1R0M50	C 324	CEAS470M16
C 121	CEJA1R0M50	C 325	CEAS100M16
C 122	CEJA1R0M50	C 326	CEAS100M16
C 123	CEAS470M16	C 327	CCSQCH101J50
C 124	CEAS470M16	C 328	CCSQCH101J50
C 125	CEAS100M16	C 329	CEAS471M16
C 126	CEAS100M16	C 330	CEAS101M16
C 127	CCSQCH101J50	C 331	CKSQYB103K50
C 128	CCSQCH101J50	C 332	CCSQCH101J50
C 129	CEAS471M16	C 501	2200μF/16V
C 130	CEAS101M16	C 502	
C 131	CKSQYB103K50	C 503	1000μF/16V
C 132	CCSQCH101J50	C 504	
C 201	CEJA1R0M50	C 505	
C 202	CEJA1R0M50	C 506	
C 203	CEJA1R0M50	C 507	
C 204	CEJA1R0M50	C 508	EMI Filter
C 205	CEAS100M16		
C 206	CEAS100M16		
C 207	CEAS100M16		
C 208	CEAS470M16		
C 209	CEAS4R7M25		
C 210	CEAS101M16		
C 211	CEAS220M16		
C 212	CEAS100M16		
C 213	CEAS100M16		
C 214	CEAS100M16		
C 215	CEAS101M16		
C 216	CKSQYB103K50		
C 217	CEJA1R0M50		
C 218	CEJA1R0M50		

B Unit Number :
Unit Name : PCB Unit(Control Unit)

MISCELLANEOUS

IC 701	IC	BH3540AFS
IC 702	IC	BH3540AFS
IC 703	IC	BA178M05FP
Q 701		DTC143EK
Q 702		DTB114EK
D 701	LED	SLC-22VR
D 702	Diode	1SS355
S 701	Switch	CZS2071
S 702	Switch	CZS2071
S 703	Switch	CZS2071

====Circuit Symbol and No.====	Part Name	Part No.
S 704	Switch(POWER)	CZS2041
VR 701	Volume 50kΩ(B)	CZC2065
VR 702	Volume 50kΩ(B)	CZC2065
F 701	Fuse 1A	CZE3265

RESISTORS

R 111	RS1/10S750J
R 701	RS1/10S153J
R 702	RS1/10S153J
R 703	RS1/10S153J
R 704	RS1/10S153J
R 705	RS1/10S301J
R 706	RS1/10S472J
R 707	RS1/10S472J
R 708	RS1/10S513J
R 709	RS1/10S103J
R 801	RS1/10S0R0J
R 802	RS1/10S0R0J
R 803	RS1/10S0R0J
R 804	RS1/10S0R0J
R 805	RS1/10S0R0J
R 807	RS1/10S0R0J

CAPACITORS

C 701	CEJA100M16
C 702	CEJA100M16
C 703	CEJA331M6R3
C 704	CEJA331M6R3
C 705	CEJA101M10
C 706	CEJA331M6R3
C 707	CEJA100M16
C 708	CEJA100M16
C 709	CEJA331M6R3
C 710	CEJA331M6R3
C 711	CEJA101M10
C 712	CEJA331M6R3
C 713	CEJA1R0M50
C 714	CEJA100M16
C 715	CEJA470M16
C 716	CEJA100M16
C 717	CKSQYF104Z25

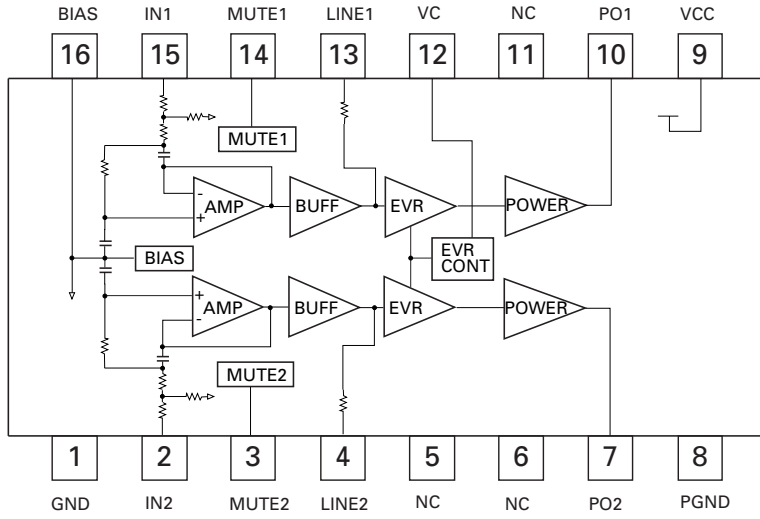
6. ADJUSTMENT

There is no information to be shown in this chapter.

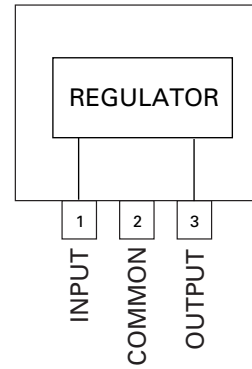
7. GENERAL INFORMATION

7.1 IC

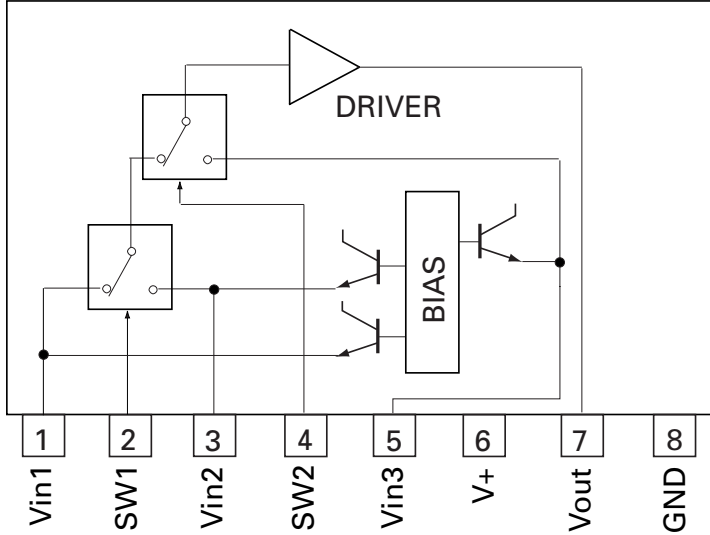
BH3540AFS



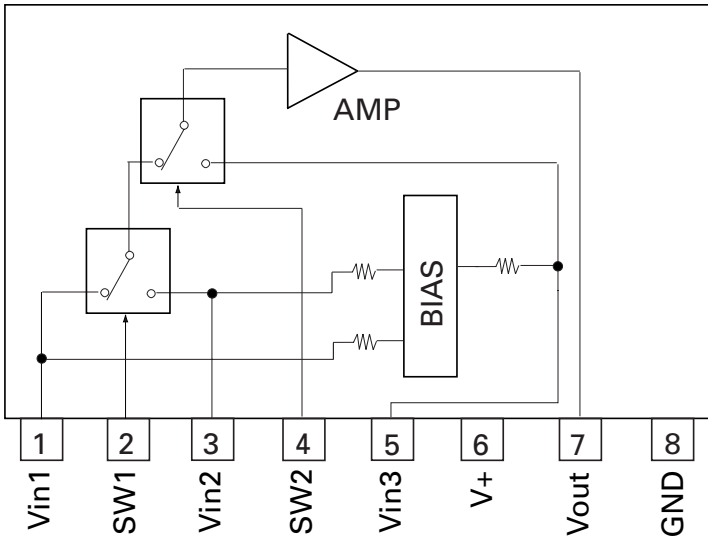
BA178M05FP



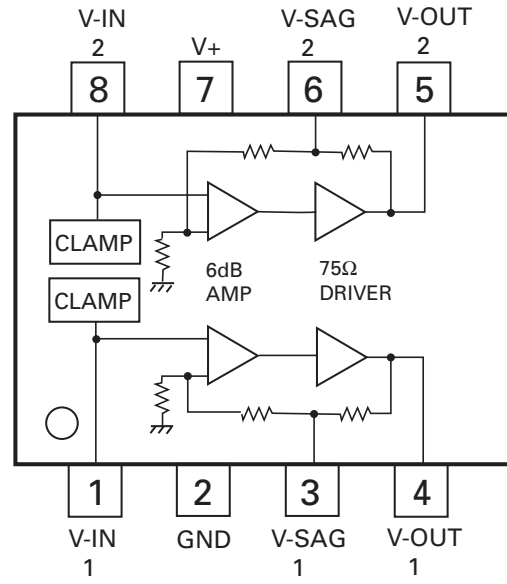
NJM2244L



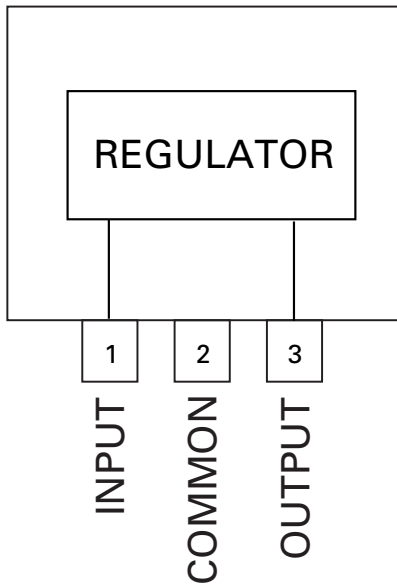
NJM2245L



NJM2267D



BA178M08FP



8. OPERATIONS AND SPECIFICATIONS

8.1 OPERATIONS

Controller Unit

VOLUME

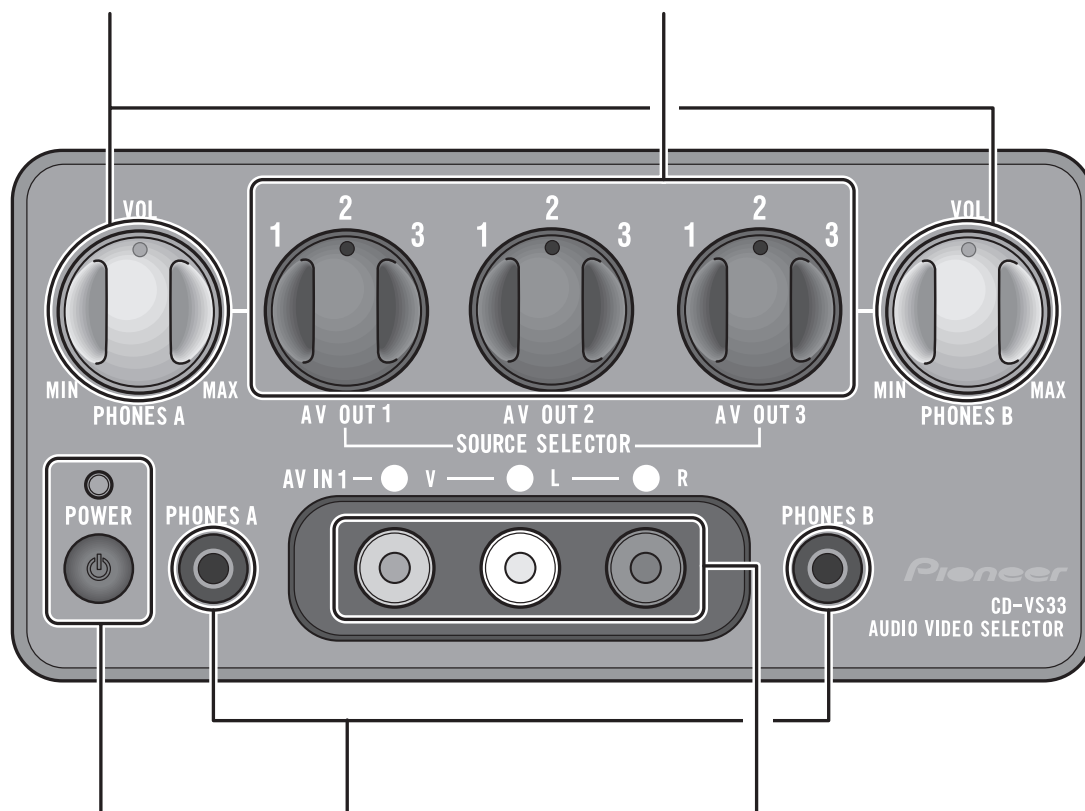
PHONES A VOLUME is used to adjust the volume of the headphones connected to PHONES A.

PHONES B VOLUME is used to adjust the volume of the headphones connected to PHONES B.

Rotate counterclockwise to reduce the volume and rotate clockwise to increase the volume.

SOURCE SELECTOR (1 - 3)

Used to switch the video and audio connected to the AV IN jack (1 - 3) for each AV OUT jack (1 - 3).



Power indicator, power switch

The power is turned on or off alternately each time the power switch is pressed. The power indicator lights when the power is on.

Headphone output jacks

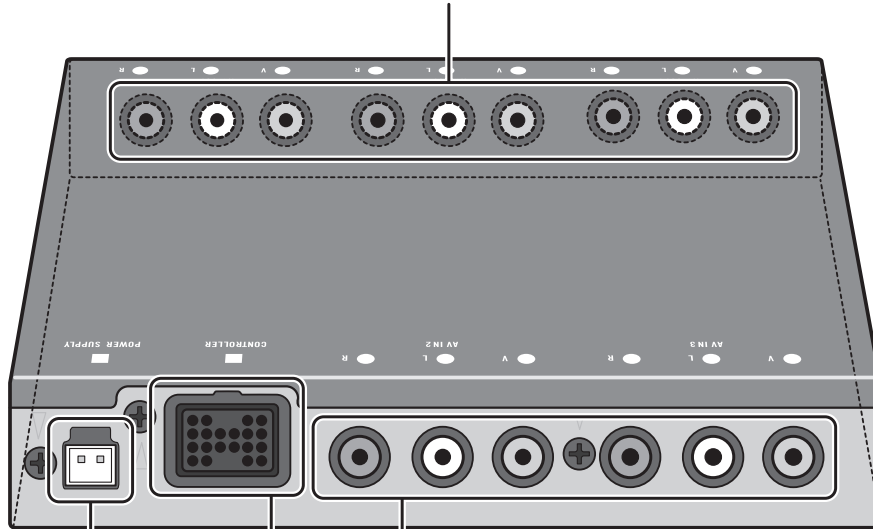
The mini pin plug of headphones can be connected to PHONES A or PHONES B. The audio from AV OUT 1 is output from the headphones connected to PHONES A. The audio from AV OUT 3 is output from the headphones connected to PHONES B.

AV IN jacks (1)

RCA video input (yellow)
RCA audio input (white, red)
Used to connect 8mm video, vehicle-mounted portable video, etc.

Hide-away Unit

AV OUT jacks (1 – 3)
RCA video output (yellow)
RCA audio output (white, red)
Outputs the video and audio signals (Multi-DVD player, vehicle-mounted portable video, etc.) connected to the AV IN jack.

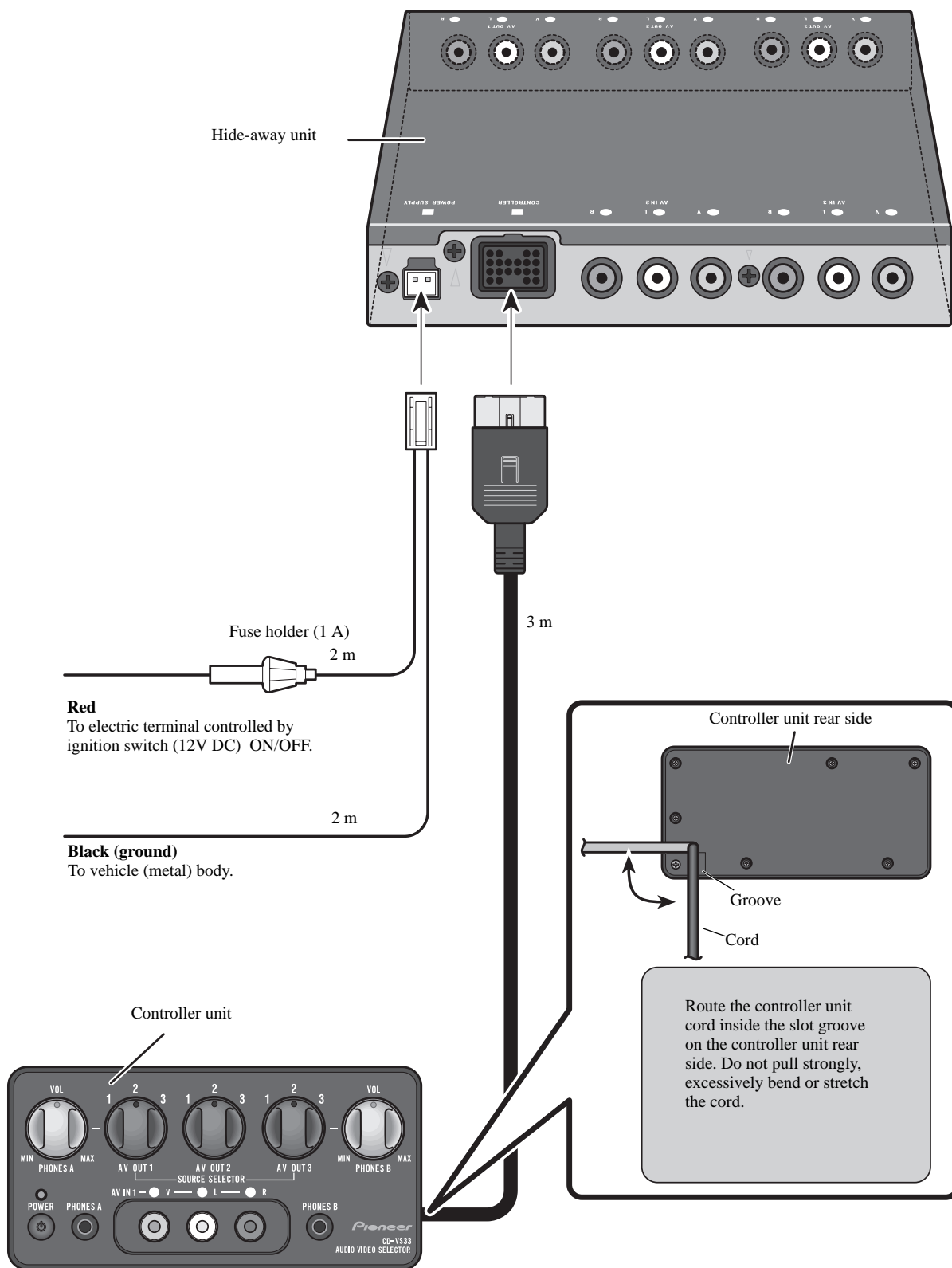


Power
Connect the power cord (provided).

AV IN jacks (2 – 3)
RCA video input (yellow)
RCA audio input (white, red)
Used to connect to the RCA input jacks of video and portable video units, etc.

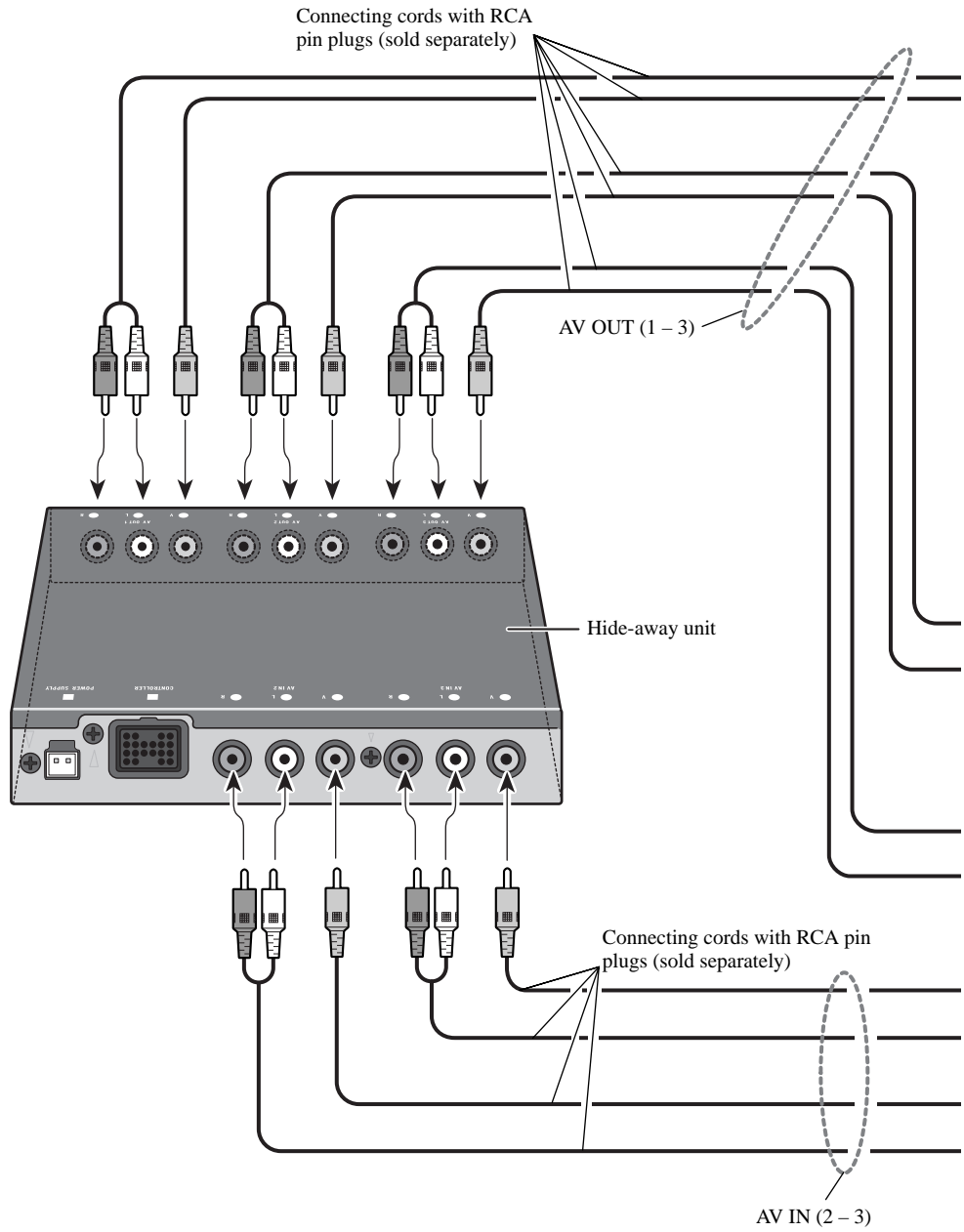
Controller connection jack
Connect the controller unit (provided).

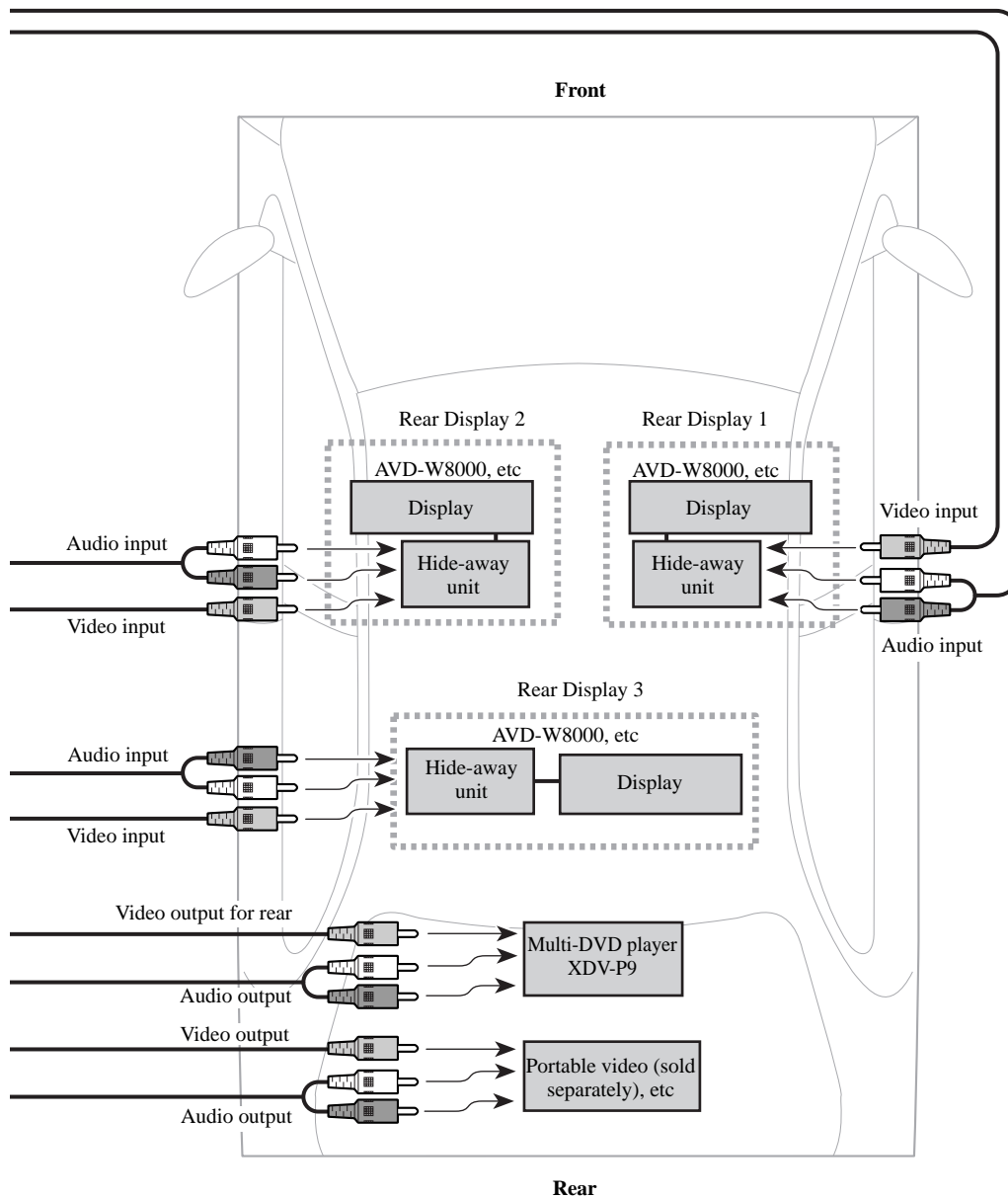
Connecting the Power Cord and Controller Unit



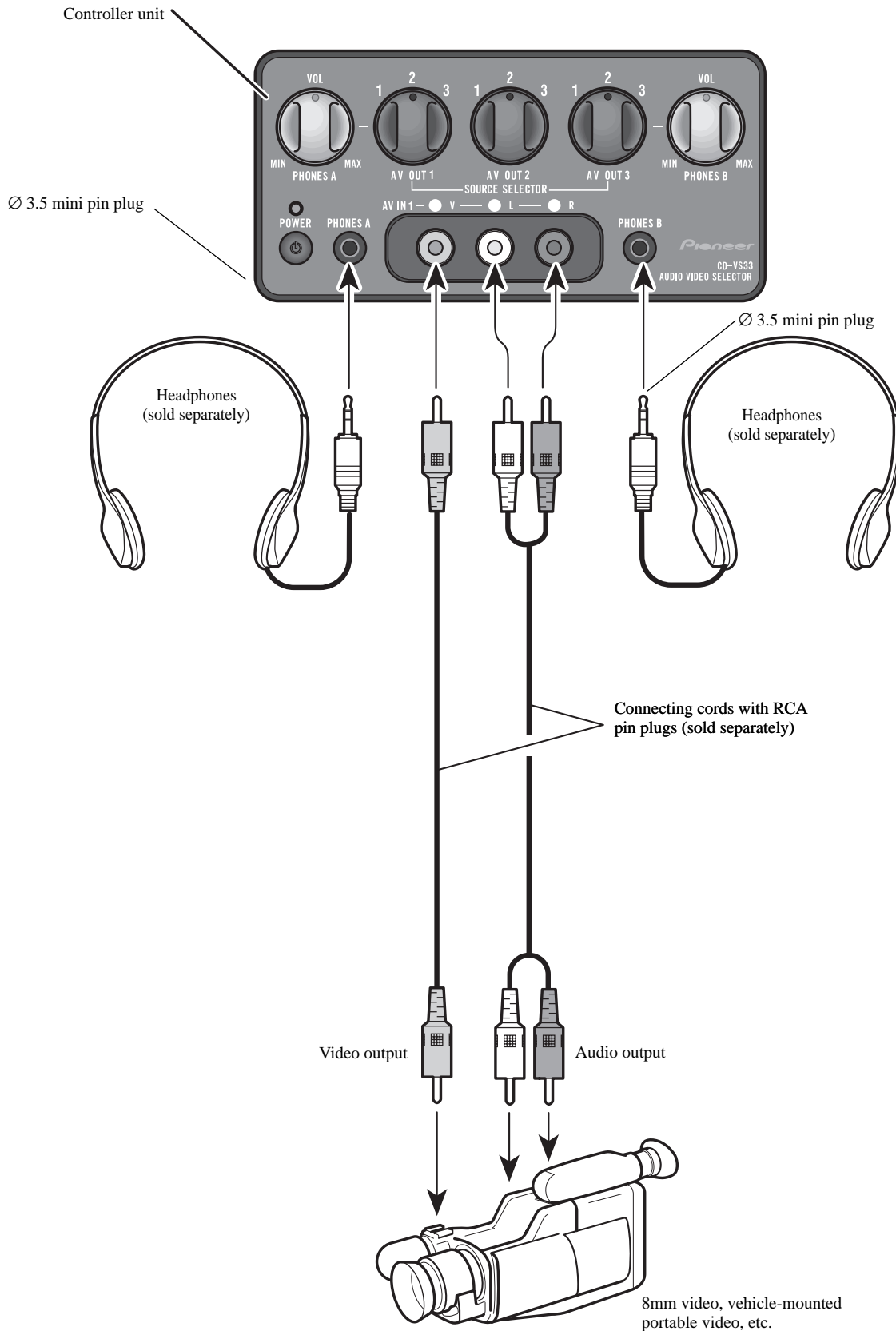
Connecting the Units

Connecting the System





Connecting the Audio / Video equipment



8.2 SPECIFICATIONS

Power Source	14.4 V (10.8 – 15.1 V allowable)
Grounding System	Negative Type
Max. Current Consumption	0.4 A
Audio Output Level	1Vp-p/75Ω
Hide-away Unit	
Dimensions	160 (W) × 28 (H) × 120 (D) mm
Weight	0.53 kg
Controller	
Dimensions	120 (W) × 60 (H) × 32 (D) mm
Weight	0.32 kg

Note:

- Specifications and the design are subject to possible modification without notice due to improvements.