

**Pioneer**

# ***Service Manual***

ORDER NO.  
**RRV2038**

**STEREO DOUBLE CASSETTE DECK**

# **CT-W505R**

● Refer to the service manual RRV1475 for CT-W505R/KUXJ.

**THIS MANUAL IS APPLICABLE TO THE FOLLOWING MODEL(S) AND TYPE(S).**

Type	Model	Power Requirement	The voltage can be converted by the following method.
	CT-W505R		
HYXJ7	○	AC220-230V	AC230-240V, *
HVXJ7	○	AC230-240V	AC220-230V, *

\*: Alter the wiring of the power-supply block at the primary winding of Power transformer referring to the Line Voltage Selection described in Service Manual.

## **CONTENTS**

1. CONTRAST OF MISCELLANEOUS PARTS ..... 2
2. SCHEMATIC DIAGRAM ..... 5
3. PCB CONNECTION DIAGRAM ..... 7

**PIONEER ELECTRONIC CORPORATION** 4-1, Meguro 1-Chome, Meguro-ku, Tokyo 153-8654, Japan  
**PIONEER ELECTRONICS SERVICE, INC.** P.O. Box 1760, Long Beach, CA 90801-1760, U.S.A.  
**PIONEER ELECTRONIC (EUROPE) N.V.** Haven 1087, Keetberglaan 1, 9120 Melsele, Belgium  
**PIONEER ELECTRONICS ASIACENTRE PTE. LTD.** 501 Orchard Road, #10-00 Wheelock Place, Singapore 238880  
**©PIONEER ELECTRONIC CORPORATION 1998**

T-DZE OCT. 1998 Printed in Japan

# 1. CONTRAST OF MISCELLANEOUS PARTS

NOTES : ● Parts marked by “NSP” are generally unavailable because they are not in our Master Spare Parts List.

● The  $\triangle$  mark found on some component parts indicates the importance of the safety factor of the part. Therefore, when replacing, be sure to use parts of identical designation.

● When ordering resistors, first convert resistance values into code form as shown in the following examples.

Ex. 1 When there are 2 effective digits (any digit apart from 0), such as 560 ohm and 47k ohm (tolerance is shown by  $J = 5\%$ , and  $K = 10\%$ ).

$560 \Omega \rightarrow 56 \times 10^1 \rightarrow 561 \dots\dots\dots RD1/4PU \begin{array}{|c|c|c|} \hline 5 & 6 & 1 \\ \hline \end{array} J$

$47k \Omega \rightarrow 47 \times 10^3 \rightarrow 473 \dots\dots\dots RD1/4PU \begin{array}{|c|c|c|} \hline 4 & 7 & 3 \\ \hline \end{array} J$

$0.5 \Omega \rightarrow R50 \dots\dots\dots RN2H \begin{array}{|c|c|} \hline R & 5 \\ \hline \end{array} 0 K$

$1 \Omega \rightarrow 1R0 \dots\dots\dots RS1P \begin{array}{|c|c|c|} \hline 1 & R & 0 \\ \hline \end{array} K$

Ex. 2 When there are 3 effective digits (such as in high precision metal film resistors).

$5.62k \Omega \rightarrow 562 \times 10^1 \rightarrow 5621 \dots\dots\dots RN1/4PC \begin{array}{|c|c|c|c|} \hline 5 & 6 & 2 & 1 \\ \hline \end{array} F$

● Reference Nos. indicate the pages and Nos. in the service manual for the base model.

## ■ CONTRAST TABLE

CT-W505R/HYXJ7, HVXJ7 and CT-W505R/KUXJ are constructed the same except for the following:

Ref. No.	Mark	Symbol and Description	Part No.			Remarks
			CT-W505R KUXJ	CT-W505R HYXJ7	CT-W505R HVXJ7	
P4-1	NSP	MOTHER UNIT	RWM1817	RWM2054	RWM2054	*1
P4-2		└ MAIN UNIT	RWZ3721	RWZ4323	RWZ4323	
P4-4	NSP	└ SUB UNIT	RWZ3722	RWZ4324	RWZ4324	
P4-4		└ TRANSFORMER 2 UNIT	RWZ3723	RWZ4325	RWZ4325	*2 No. 1
P4-5	$\triangle$	Strain Relief	CM-22C	CM-22B	CM-22B	
P4-6	$\triangle$	FU1001, FU1002 (Fuse, 1.5A)	REK1059	Not used	Not used	
P4-6	$\triangle$	FU1, FU2 (Fuse, 1.6A)	Not used	REK1024	REK1024	
P4-7	$\triangle$	AC Power Cord	PDG1015	PDG1058	PDG1055	
P4-9	$\triangle$	Power Transformer (AC120V)	RTT1223	Not used	Not used	
P4-9	$\triangle$	Power Transformer (AC220-230V)	Not used	RTT1276	RTT1276	
P4-10		1 Mechanism Unit	RYM1237	RYM1261	RYM1261	*2 No. 2
P4-11		2 Mechanism Unit	RYM1238	RYM1262	RYM1262	
P4-12		Rubber Sheet (for front side)	AEB1111	Not used	Not used	
P4-13		Foot Assy (for rear side)	AEC1531	Not used	Not used	
P4-28		Power Knob	RAC1883	RAC2110	RAC2110	
P4-31		FL Lens	RAH2686	RAH2688	RAH2688	
P4-32		Front Panel	RAH2689	RAH2873	RAH2873	
P4-36		Name Plate	RAM1007	PAM1791	PAM1791	
P4-38		Rear Panel	RNA2028	RNA2215	RNA2216	
P4-40		Connection Cord Assy	RDE1002	RDE1026	RDE1026	
P4-42		Operating Instructions (English)	RRB1170	Not used	RRB1187	
P4-42		Operating Instructions (French/Italian/Dutch/Swedish/Spanish/Portuguese)	Not used	RRD1205	Not used	
P4-42		Operating Instructions (English/German)	Not used	RRE1169	Not used	
P4-45		Packing Case	RHG1703	RHG1881	RHG1882	
P4-51		65 Label	ORW1069	Not used	Not used	
P4-63	NSP	Fuse Caution Label	RRW-111	Not used	Not used	
P4-64	NSP	Transformer 1 PCB	RNZ3050	RNZ3321	RNZ3321	
P4-65	NSP	Warranty Card	ARY1051	ARY7022	ARY7022	*3
P4-65	NSP	Transformer Cover PCB	Not used	RNZ3323	RNZ3323	

Ref. No.	Mark	Symbol and Description	Part No.			Remarks
			CT-W505R KUXJ	CT-W505R HYXJ7	CT-W505R HVXJ7	
	⚠	Fuse (5A) (for AC power cord)	Not used	Not used	PEK1003	*2 No. 3
		LED Lens Cover	Not used	RNK2206	RNK2206	*2 No. 4
		Insulator (for front and rear side)	Not used	PNW1912	PNW1912	*2 No. 5
		Spacer A	Not used	Not used	RHC1032	*2 No. 6
		Spacer B	Not used	Not used	RHC1033	*2 No. 7
		Caution Card	Not used	Not used	RRN1001	*2 No. 8
		Vinyl Bag (115 × 270 × 0.05)	Not used	Not used	Z21-013	*2 No. 9

\*1: Although RWZ4325 and RWZ3723 are different in part number, they have same service parts.

\*2: The numbers in the remarks column correspond to the numbers on the "EXPLODED VIEWS".

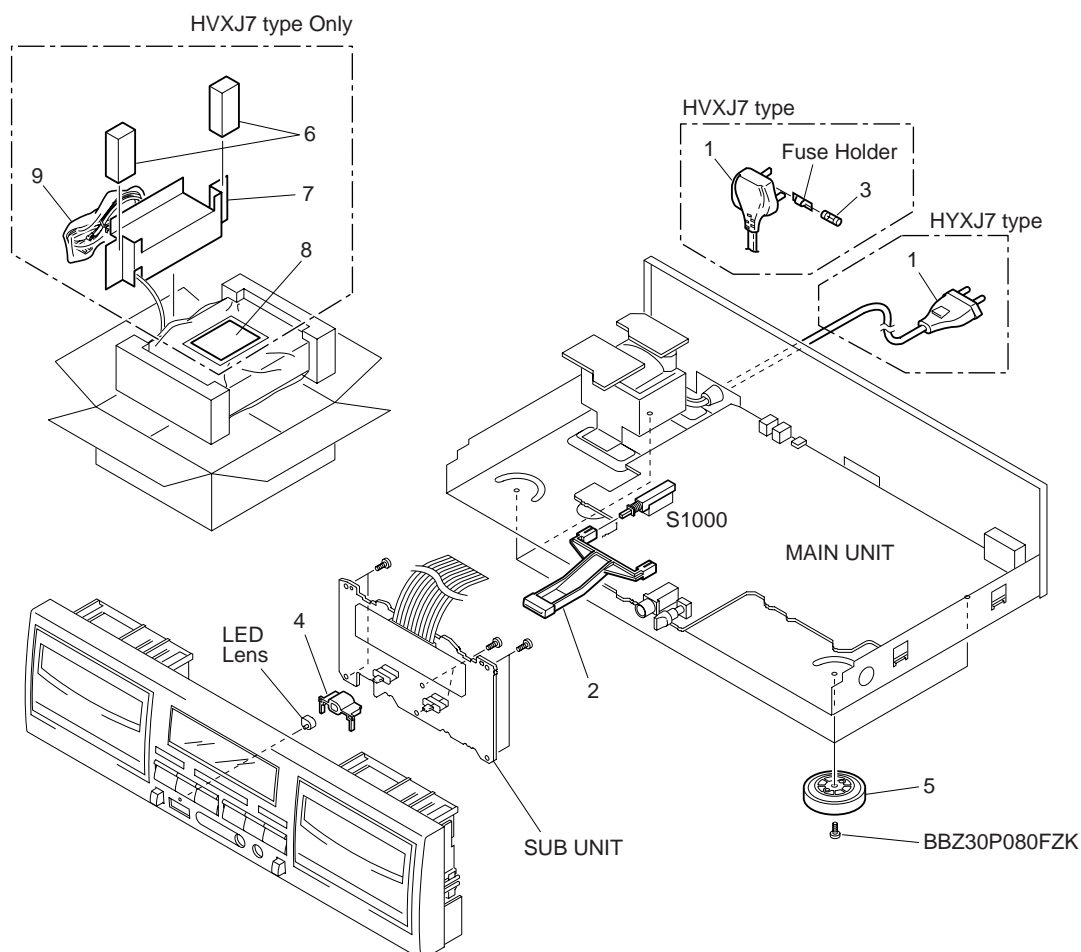
\*3: Refer to "2. SCHEMATIC DIAGRAM".

## 1 Mechanism Unit and 2 Mechanism Unit

RYM1261, RYM1262 and RYM1237, RYM1238 are constructed the same except for the following:

Ref. No.	Mark	Symbol and Description	Part No.		Remarks
			RYM1237, RYM1238	RYM1261, RYM1262	
P9-6		MTR MAIN BLK	RXM1081	RXM1075	

## EXPLODED VIEWS



## ■ CONTRAST OF PCB ASSEMBLIES

### MAIN UNIT

RWZ4323 and RWZ3721 are constructed the same except for the following:

Mark	Symbol and Description	Part No.		Remarks
		RWZ3721	RWZ4323	
	IC501 D503 S1000 F103–F106, F301–F304	PD5350A 1SS254 Not used Not used	PD5505A Not used RSA1002 DTF1067	*1 *1
	C111, C112, C180–C182, C185, C191, C198, C199, C331, C332, C468 C119, C120, C183, C325, C327, C338, C340, C501, C1013 C133–C136, C186, C341, C342, C701, C702, C708	CEAS4R7M50  CEAS470M16  CEAS1R0M50	CEAT4R7M50  CEAT470M16  CEAT1R0M50	
	C171, C172, C203, C204, C315, C316, C323, C324, C328, C329, C465, C1008 C175, C176, C201, C202 C184, C187–C189 C311, C312, C349, C350, C464	CEAS100M50  CFTXA103J50 CEAS101M10 CEASR10M50	CEAT100M50  CFTYA103J50 CEAT101M10 CEATR10M50	
	C313, C314 C353, C354 C401 C402 C406–C408	CFTXA683J50 Not used CQPA682J2A CFTXA223J50 CEAS470M16	CFTYA683J50 CCCSL101J50 CQMA682J50 CFTYA223J50 CEAL470M16	*1
	C467 C601, C602 C603, C604 C605, C1006, C1007, C1015 C802, C852	CEAS4R7M50 CEASR22M50 CEAS101M16 CEAS331M16 Not used	CEAL4R7M16 CEATR22M50 CEAT101M16 CEAT331M16 CCSSQL330J50	*1
	C1005  C1009 C1011 C1012 C1016	RCH1116 (4700/25) CEAS220M16 CEAS221M35 CEAS330M35 CEAS102M6R3	RCH1120 (4700/35) CEAT220M25 CEAT221M35 CEAT330M35 CEAT102M6R3	
	C1020–C1023	Not used	CKCYF473Z50	*1
	VR101–VR104 (22 kΩ–B) VR801 (2.2 kΩ–B) VR802, VR851 (1 kΩ–B) R127–R130, R309–R312 J1002	RCP1046 RCP1019 RCP1044 RS1/10S0R0J Not used	VCP1158 VCP1123 VCP1151 Not used D20PWW0815E	*1

\*1: Refer to “2. SCHEMATIC DIAGRAM”.

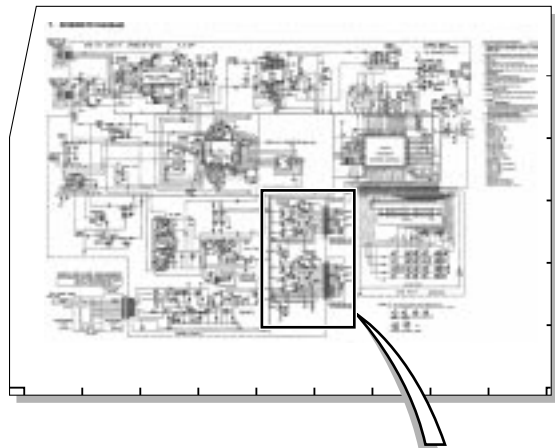
### SUB UNIT

RWZ4324 and RWZ3722 are constructed the same except for the following:

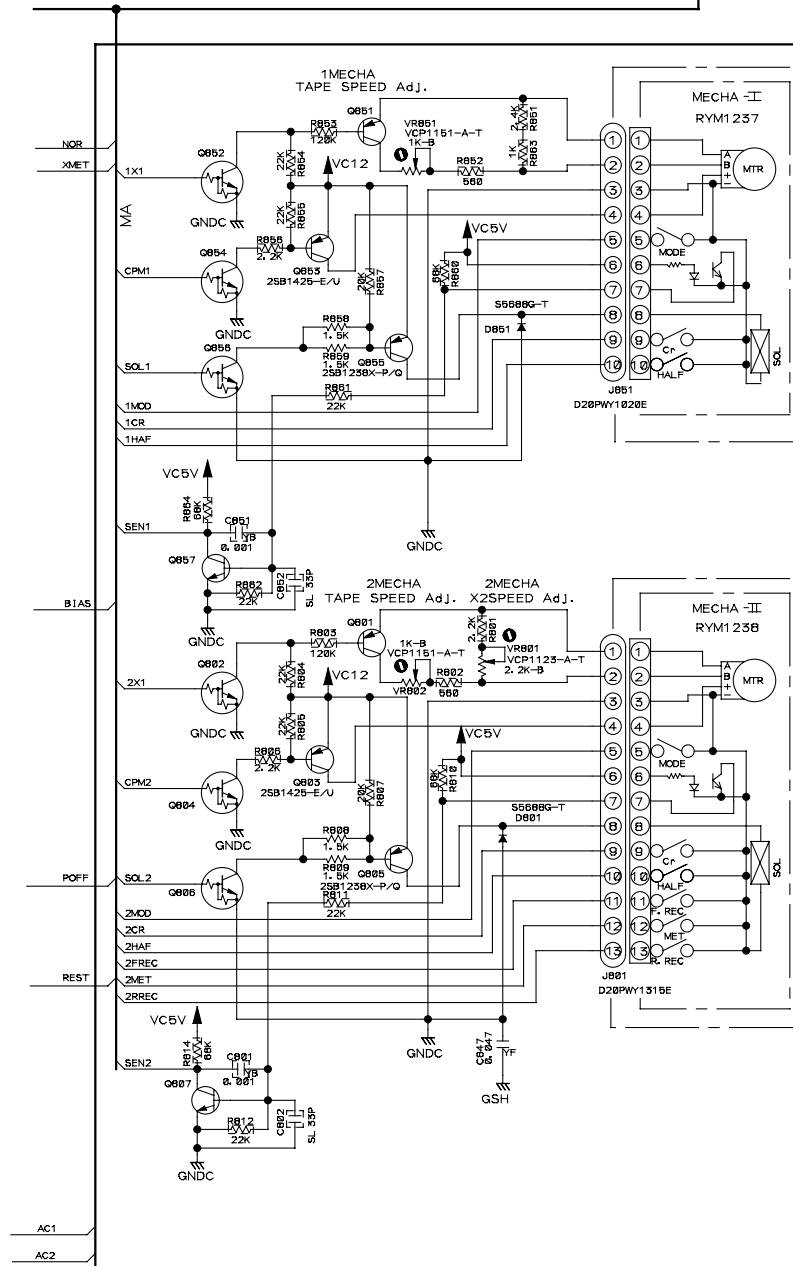
Mark	Symbol and Description	Part No.		Remarks
		RWZ3722	RWZ4324	
	D1515 S1528 (POWER STANDBY/ON) R1501	SEL6210S RSG1034 RD1/4PU181J	Not used Not used Not used	



SCHEMATIC DIAGRAM (2/2)



MAIN UNIT  
(RWZ4323)

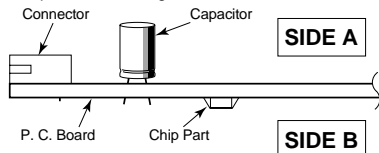


# 3. PCB CONNECTION DIAGRAM

## NOTE FOR PCB DIAGRAMS:

1. Part numbers in PCB diagrams match those in the schematic diagrams.
2. A comparison between the main parts of PCB and schematic diagrams is shown below.
3. The parts mounted on this PCB include all necessary parts for several destination.
- For further information for respective destinations, be sure to check with the schematic diagram.

## 4. Viewpoint of PCB diagrams

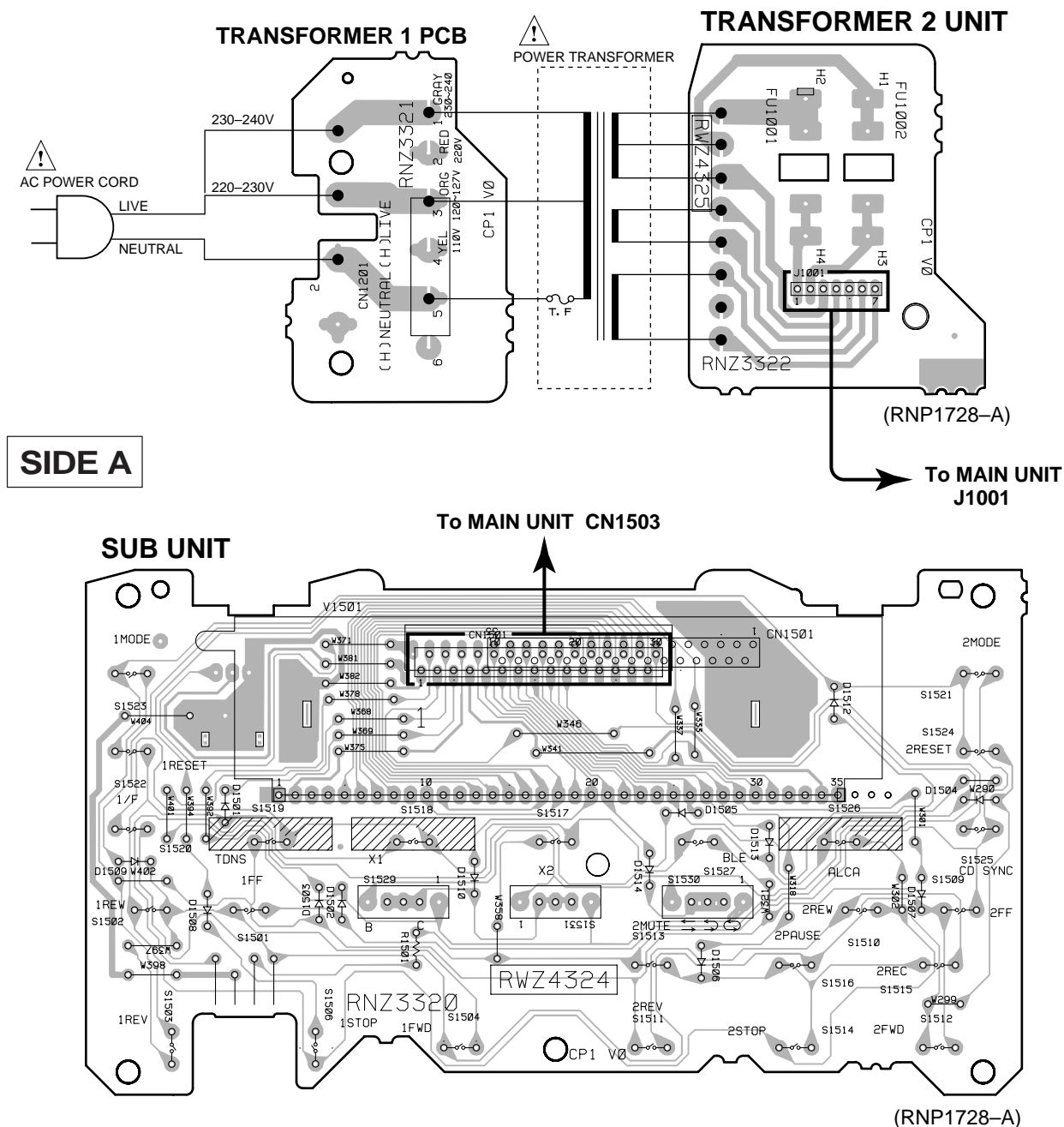


Symbol in PCB Diagrams	Symbol in Schematic Diagrams	Part Name
		Transistor
		Transistor with resistor
		Field effect transistor

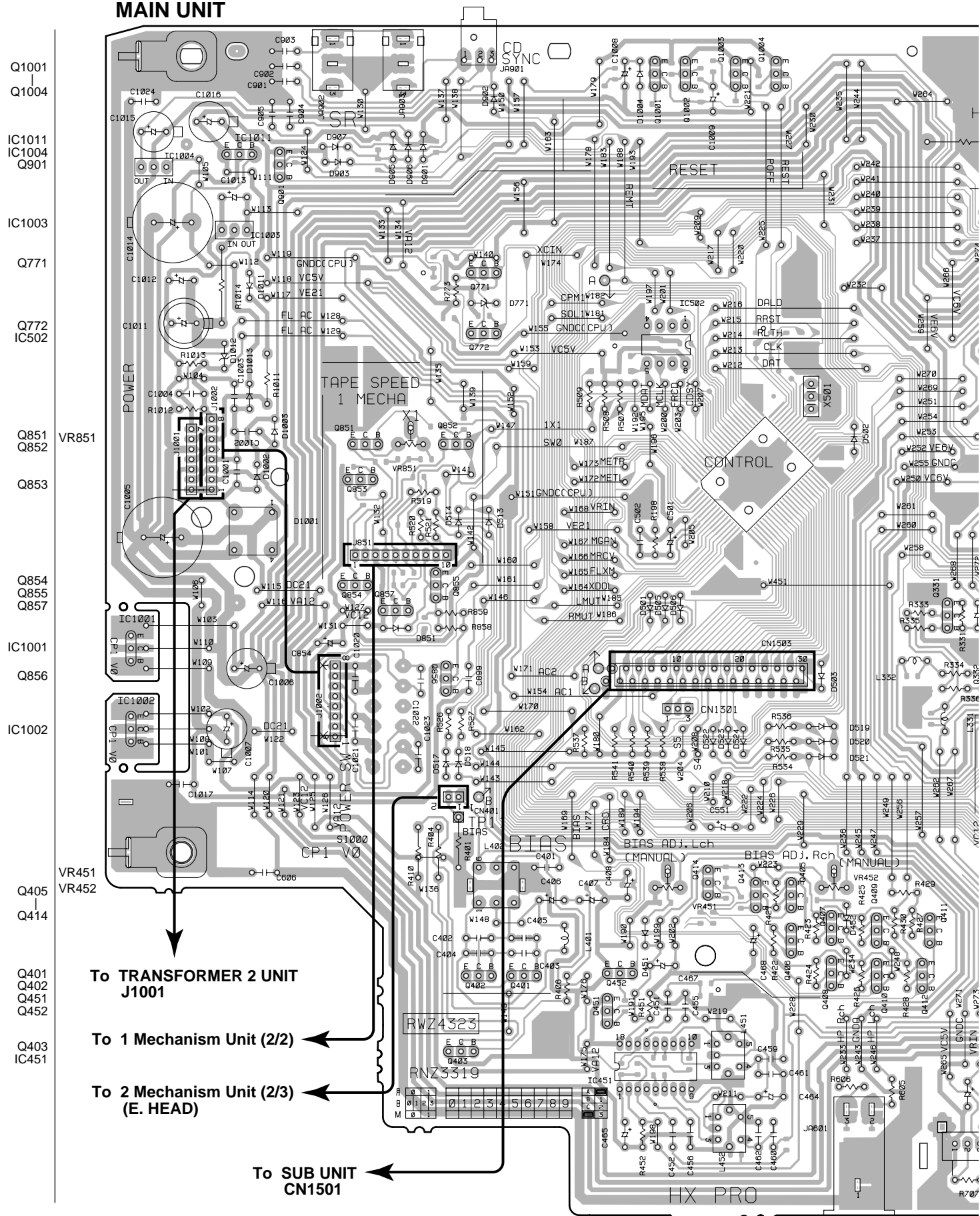
Symbol in PCB Diagrams	Symbol in Schematic Diagrams	Part Name
		Resistor array
		3-terminal regulator

## 3.1 TRANSFORMER 2 UNIT and SUB UNIT

SIDE A

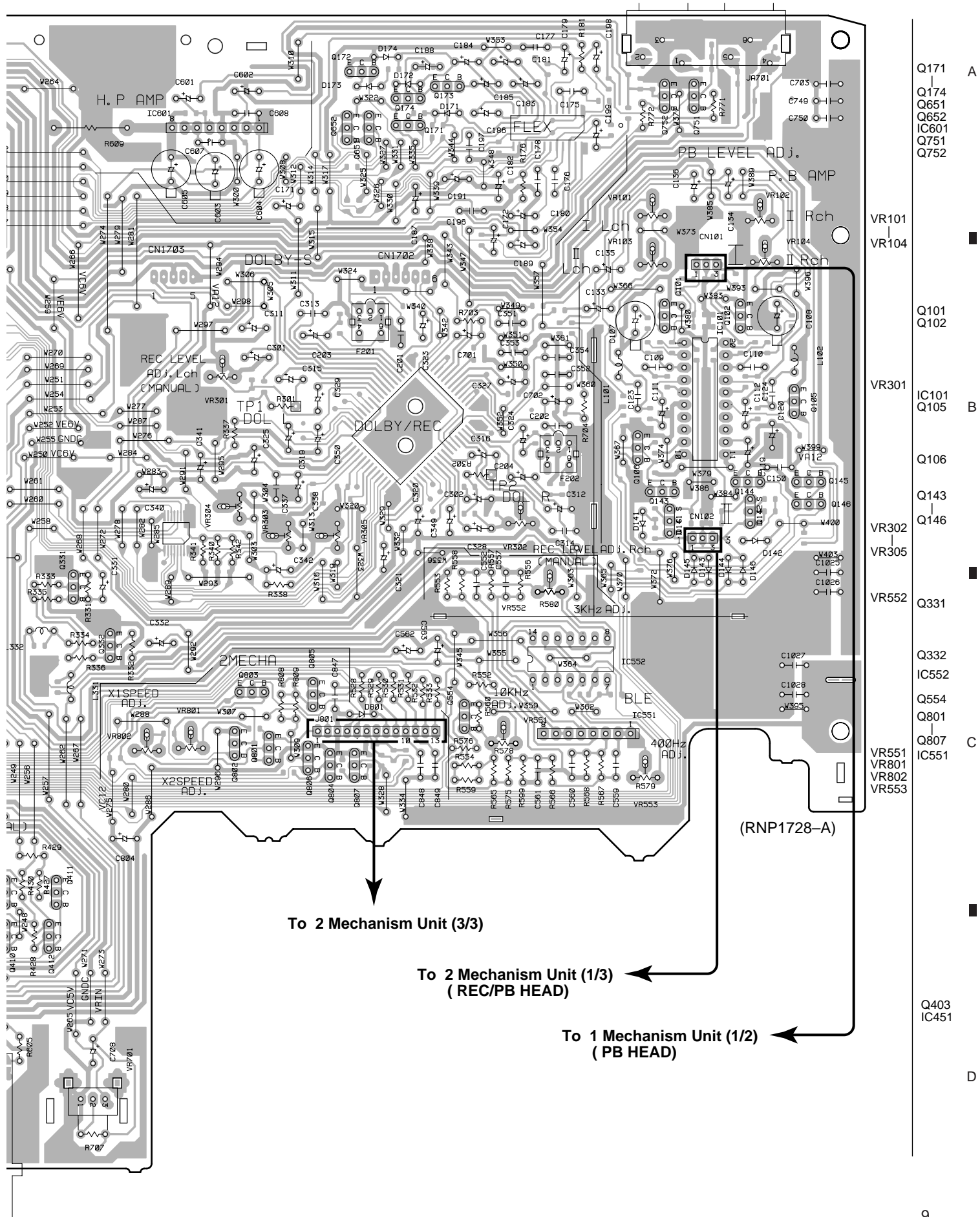








SIDE A



MAIN UNIT

