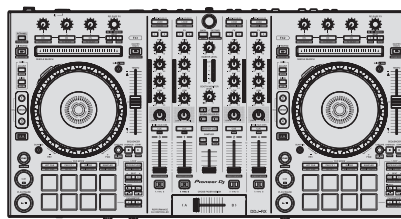


## Service Manual



DDJ-RX

ORDER NO.  
**RRV4642**

DJ Controller

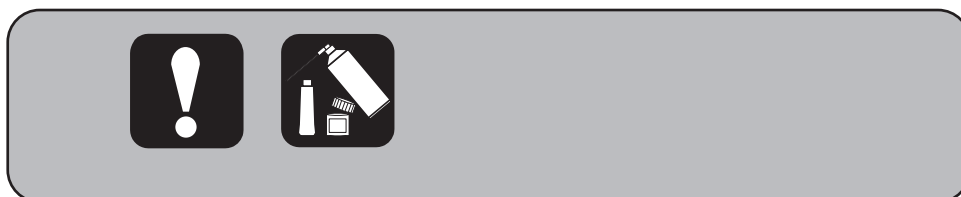
# DDJ-RX

**THIS MANUAL IS APPLICABLE TO THE FOLLOWING MODEL(S) AND TYPE(S).**

Model	Type	Power Requirement	Remarks
DDJ-RX	AXEG	AC 100 V to 240 V	
DDJ-RX	FJLPXEG	AC 100 V to 240 V	
DDJ-RX	SVYXEG	AC 100 V to 240 V	
DDJ-RX	UXEGCB	AC 100 V to 240 V	

**This service manual should be used together with the following manual(s).**

Model No.	Order No.	Remarks
DDJ-RX	RRV4641	BLOCK DIAGRAM, EXPLODED VIEWS AND PARTS LIST etc.



# SAFETY INFORMATION



This service manual is intended for qualified service technicians; it is not meant for the casual do-it-yourselfer. Qualified technicians have the necessary test equipment and tools, and have been trained to properly and safely repair complex products such as those covered by this manual.

Improperly performed repairs can adversely affect the safety and reliability of the product and may void the warranty. If you are not qualified to perform the repair of this product properly and safely, you should not risk trying to do so and refer the repair to a qualified service technician.

## WARNING

This product may contain a chemical known to the State of California to cause cancer, or birth defects or other reproductive harm.

Health & Safety Code Section 25249.6 - Proposition 65

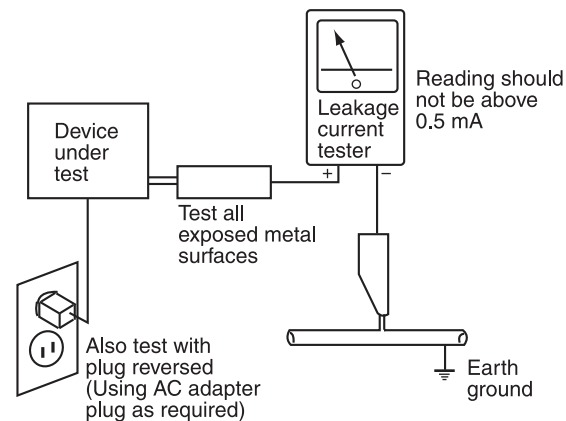
(FOR USA MODEL ONLY)

## 1. SAFETY PRECAUTIONS

The following check should be performed for the continued protection of the customer and service technician.

### LEAKAGE CURRENT CHECK

Measure leakage current to a known earth ground (water pipe, conduit, etc.) by connecting a leakage current tester such as Simpson Model 229-2 or equivalent between the earth ground and all exposed metal parts of the appliance (input/output terminals, screwheads, metal overlays, control shaft, etc.). Plug the AC line cord of the appliance directly into a 120V AC 60 Hz outlet and turn the AC power switch on. Any current measured must not exceed 0.5 mA.



AC Leakage Test

ANY MEASUREMENTS NOT WITHIN THE LIMITS OUTLINED ABOVE ARE INDICATIVE OF A POTENTIAL SHOCK HAZARD AND MUST BE CORRECTED BEFORE RETURNING THE APPLIANCE TO THE CUSTOMER.

## 2. PRODUCT SAFETY NOTICE

Many electrical and mechanical parts in the appliance have special safety related characteristics. These are often not evident from visual inspection nor the protection afforded by them necessarily can be obtained by using replacement components rated for voltage, wattage, etc. Replacement parts which have these special safety characteristics are identified in this Service Manual.

Electrical components having such features are identified by marking with a ⚠ on the schematics and on the parts list in this Service Manual.

The use of a substitute replacement component which does not have the same safety characteristics as the PIONEER recommended replacement one, shown in the parts list in this Service Manual, may create shock, fire, or other hazards.

Product Safety is continuously under review and new instructions are issued from time to time. For the latest information, always consult the current PIONEER Service Manual. A subscription to, or additional copies of, PIONEER Service Manual may be obtained at a nominal charge from PIONEER.

# CONTENTS

SAFETY INFORMATION.....	2	
10. SCHEMATIC DIAGRAM.....	4	
10.1 OVERALL WIRING DIAGRAM .....	4	A
10.2 CONTROL PCB ASSY A, B and TRANSFER PCB ASSY .....	5	
10.3 DSP PCB, OUTPUT PCB and BAL. PCB ASSYS.....	6	
10.4 MIX PCB and CR FADER PCB ASSYS.....	7	
10.5 FRONT PCB and TOUCH PCB ASSYS .....	8	
10.6 LED PCB and SENSOR PCB ASSYS.....	9	
11. PCB CONNECTION DIAGRAM .....	10	
11.1 CONTROL PCB ASSY A, B and TRANSFER PCB ASSY .....	10	
11.2 DSP PCB, OUTPUT PCB and BAL. PCB ASSYS.....	12	
11.3 MIX PCB and CR FADER PCB ASSYS.....	14	
11.4 FRONT PCB and TOUCH PCB ASSYS .....	16	
11.5 LED PCB and SENSOR ASSYS .....	17	
12. PCB PARTS LIST .....	18	B

C

D

E

F

# 10. SCHEMATIC DIAGRAM 10.1 OVERALL WIRING DIAGRAM

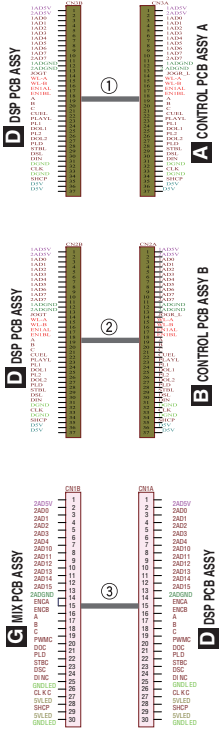
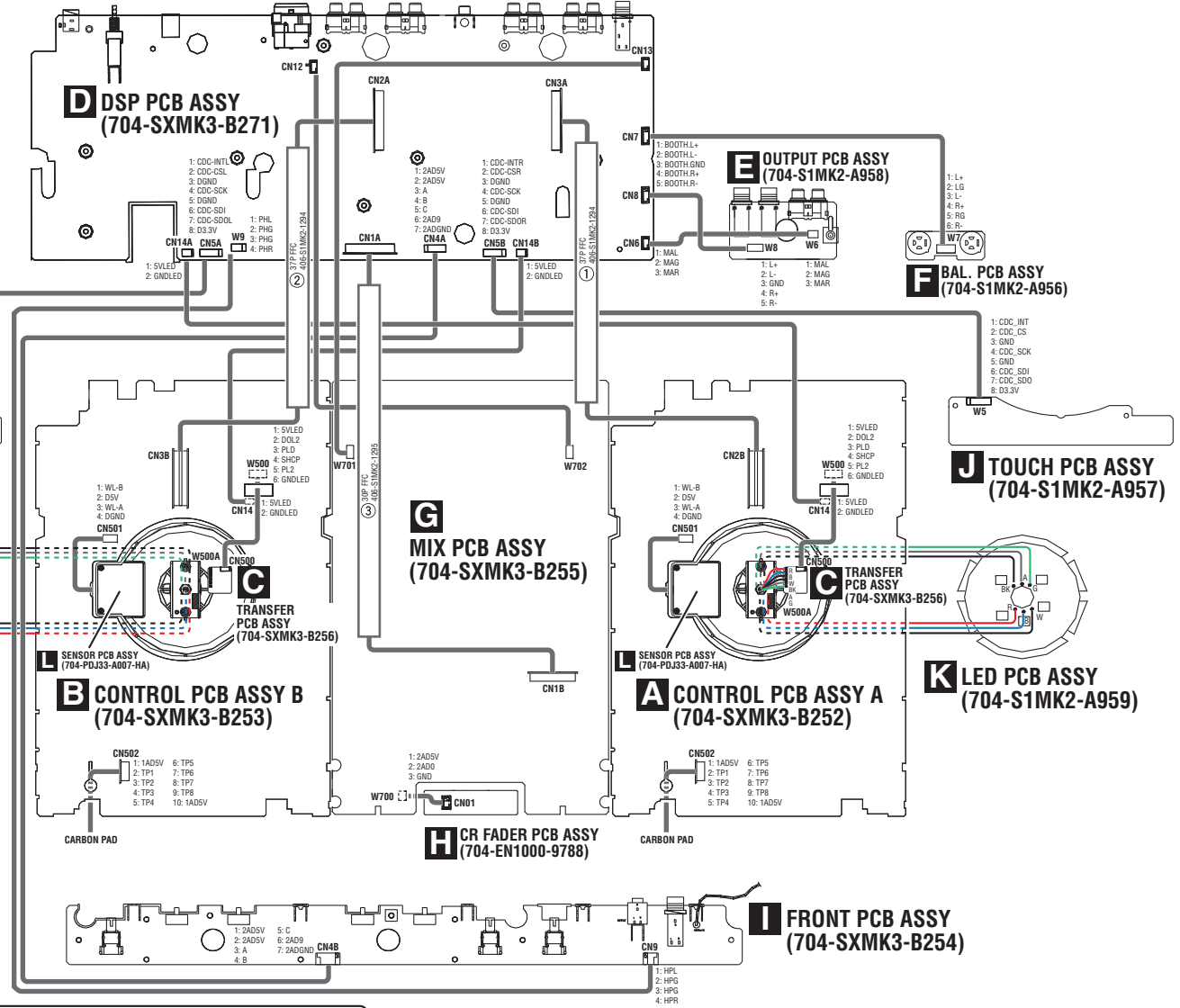
## SCHEMATIC DIAGRAM

1

2

3

4



1

2

3

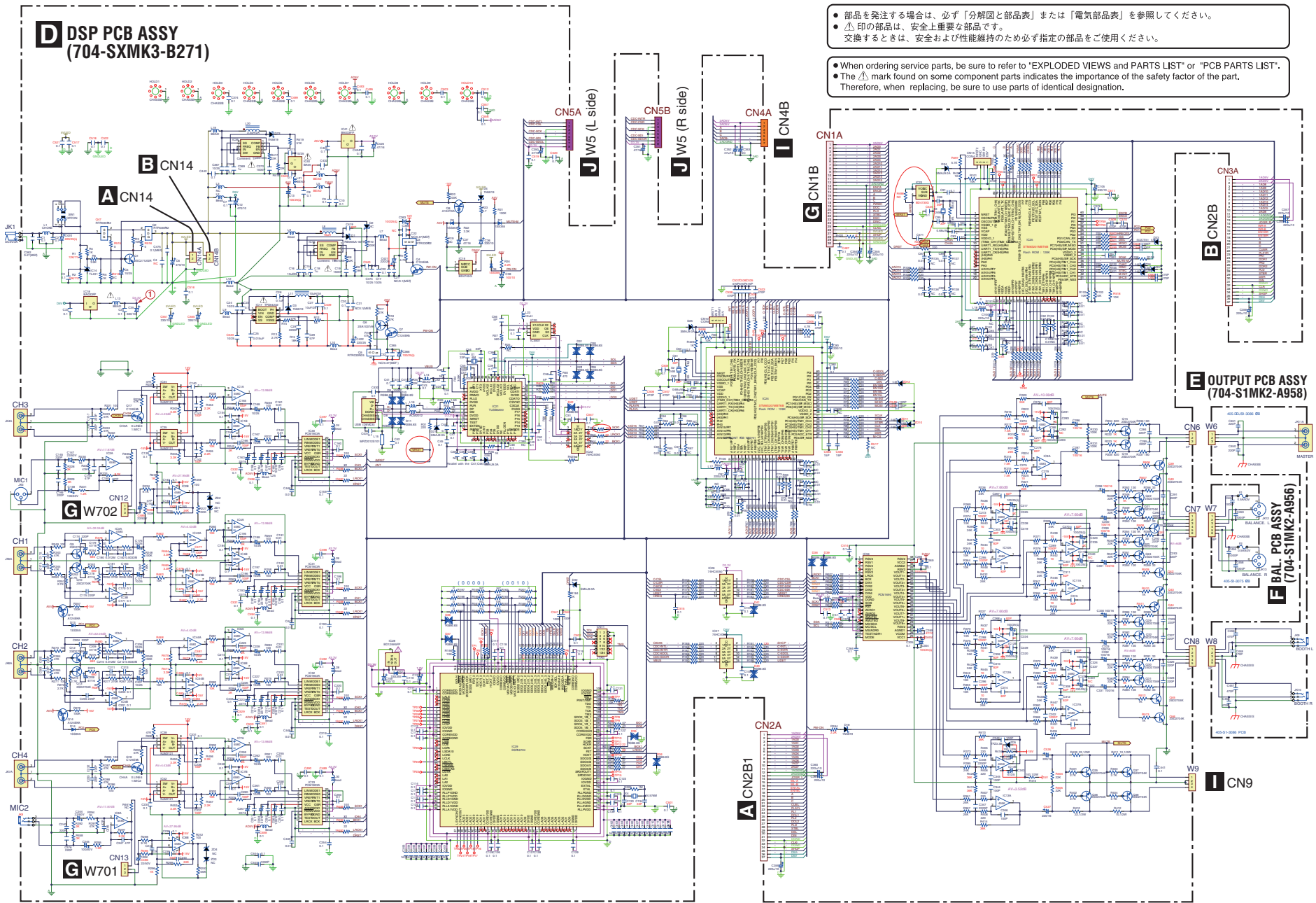
4

- 部品を発注する場合は、必ず「分解図と部品表」または「電気部品表」を参照してください。
- ▲ 印の部品は、安全上重要な部品です。  
交換するときは、安全および性能維持のため必ず指定の部品をご使用ください。
- When ordering service parts, be sure to refer to "EXPLODED VIEWS and PARTS LIST" or "PCB PARTS LIST".
- The ▲ mark found on some component parts indicates the importance of the safety of the part.  
Therefore, when replacing, be sure to use parts of identical designation.



# 10.3 DSP PCB, OUTPUT PCB and BAL. PCB ASSYS

- 部品を発注する場合は、必ず「分解図と部品表」または「電気部品表」を参照してください。
  - ▲ 印の部品は、安全上重要な部品です。交換するときは、安全および性能維持のため必ず指定の部品をご使用ください。
- When ordering service parts, be sure to refer to "EXPLODED VIEWS AND PARTS LIST" or "PCB PARTS LIST".
- The ▲ mark found on some component parts indicates the importance of the safety factor of the part. Therefore, when replacing, be sure to use parts of identical designation.



**D E F**

**D E F**

DDJ-RX

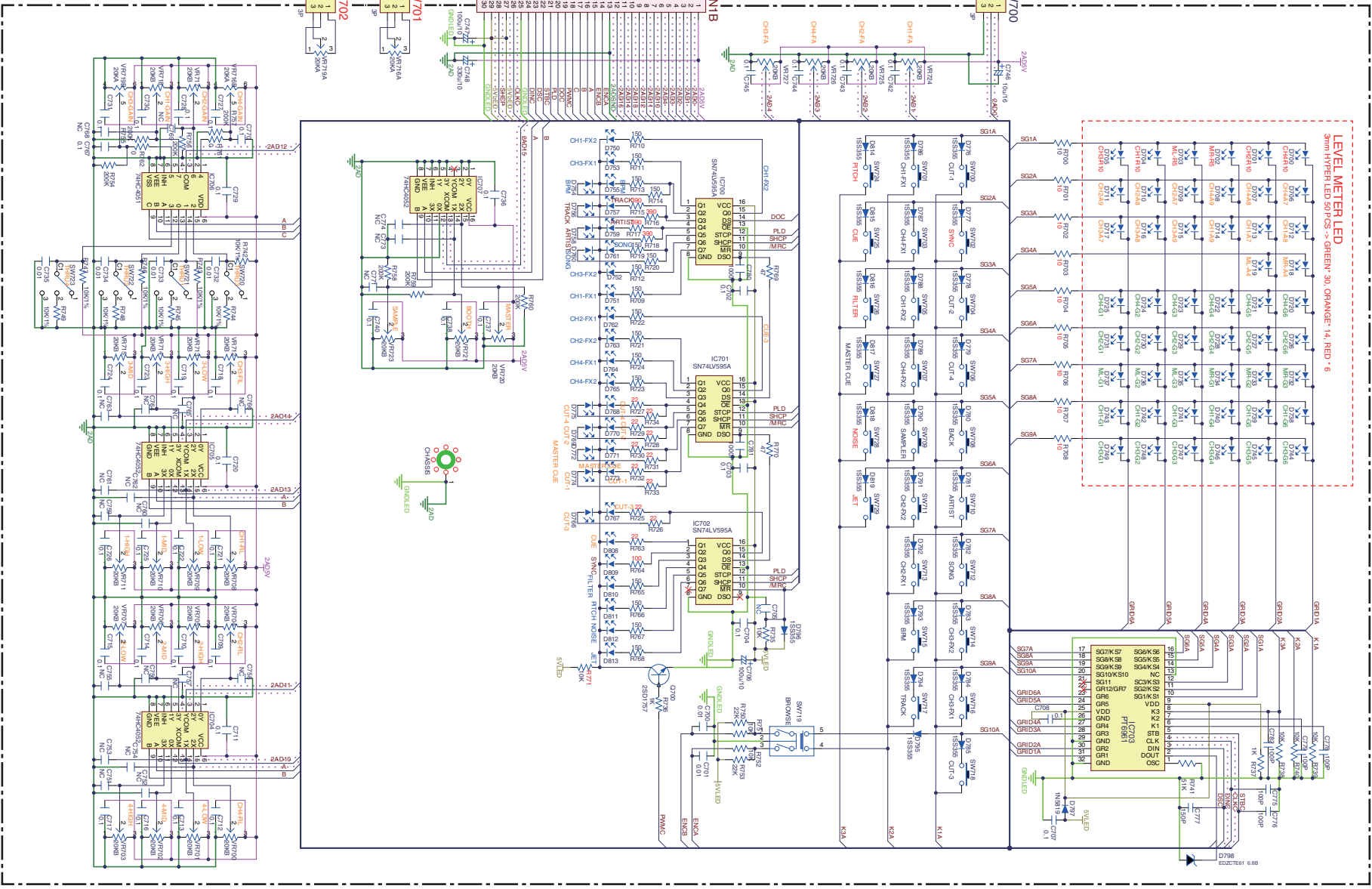
6  
1  
2  
3  
4

1  
2  
3  
4

# 10.4 MIX PCB and CR FADER PCB ASSYS

## CR FADER PCB ASSY (704-EN1000-9788)

## MIX PCB ASSY (704-SXMK3-B255)



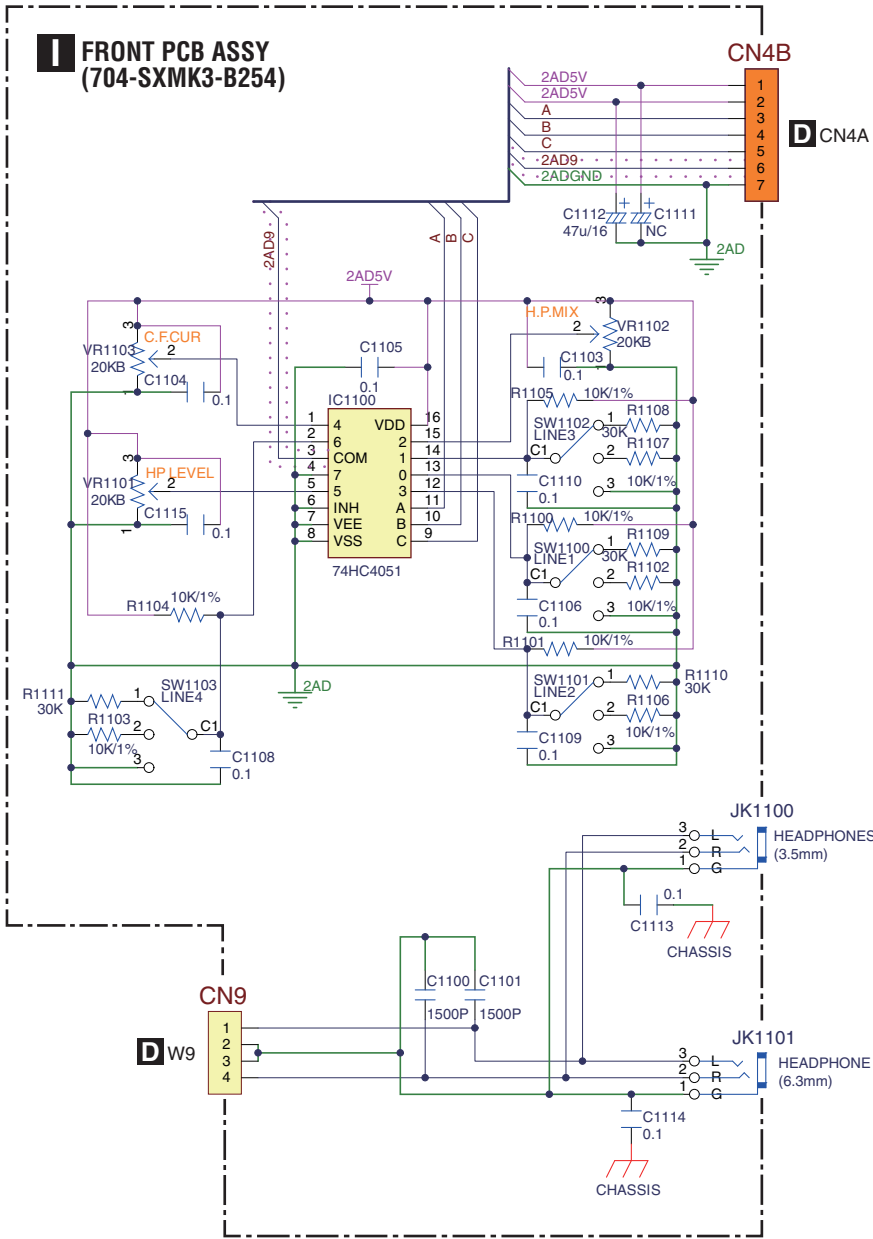
DDJ-RX

G H

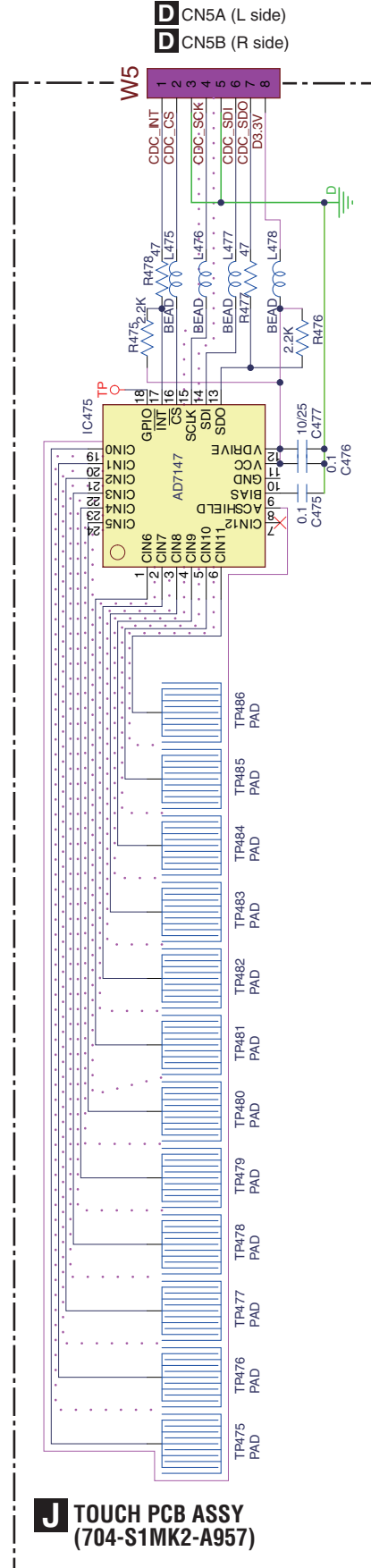
G H

# 10.5 FRONT PCB and TOUCH PCB ASSYS

**I** FRONT PCB ASSY  
(704-SXMK3-B254)



**D** CN5A (L side)  
**D** CN5B (R side)



8

DDJ-RX



1

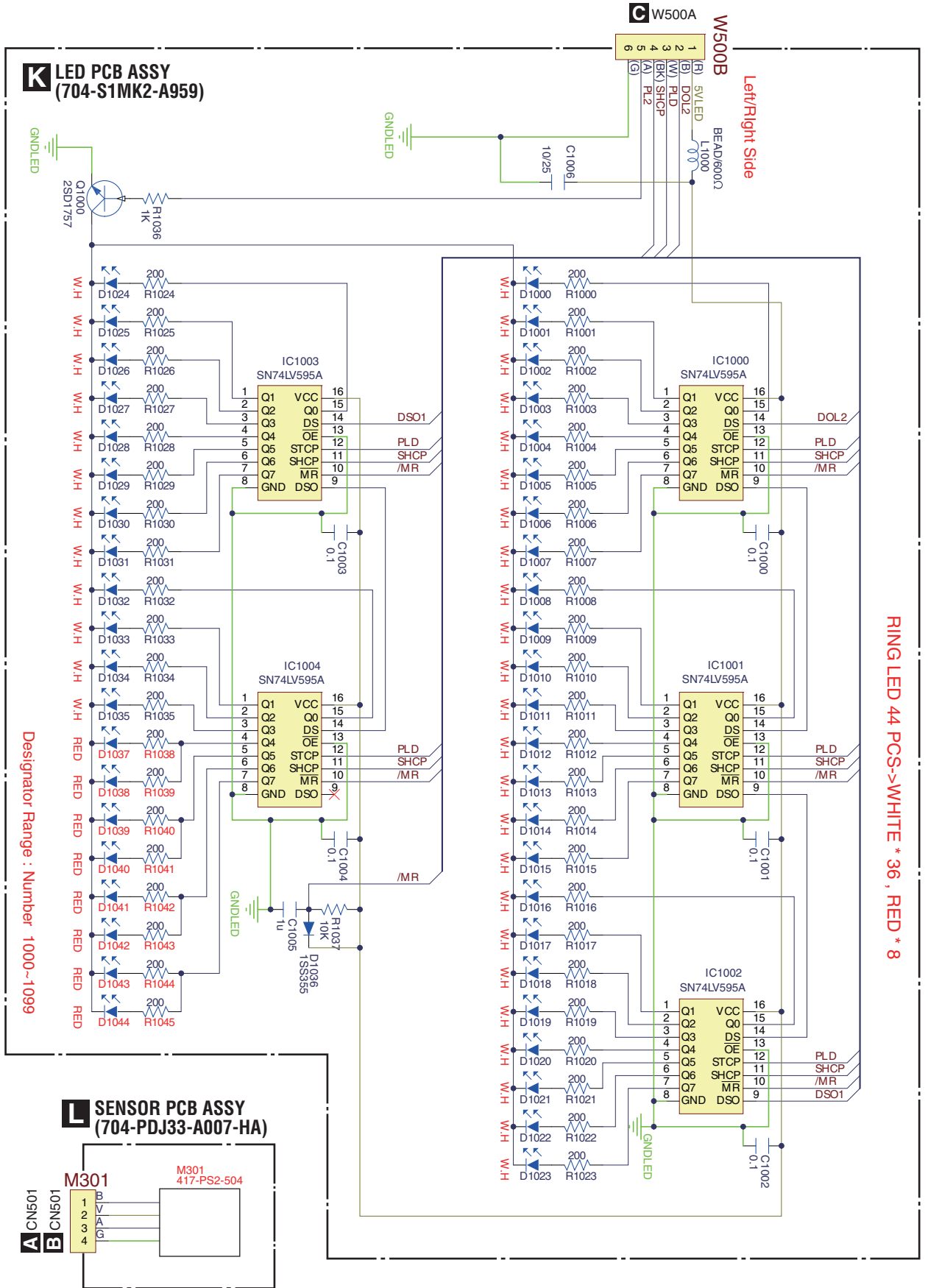
2

3

4



# 10.6 LED PCB and SENSOR PCB ASSYS



# 11. PCB CONNECTION DIAGRAM

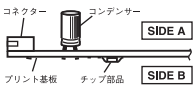
## 11.1 CONTROL PCB ASSY A, B and TRANSFER PCB ASSY

SIDE A

### PCB 図に対する注意

1. この PCB 図にマウントしている部品は複数の仕向地の部品を含んでいます。各仕向地の情報は、回路図で確認するようにしてください。

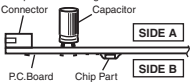
2. PCB 図の見かた。



### NOTE FOR PCB DIAGRAMS :

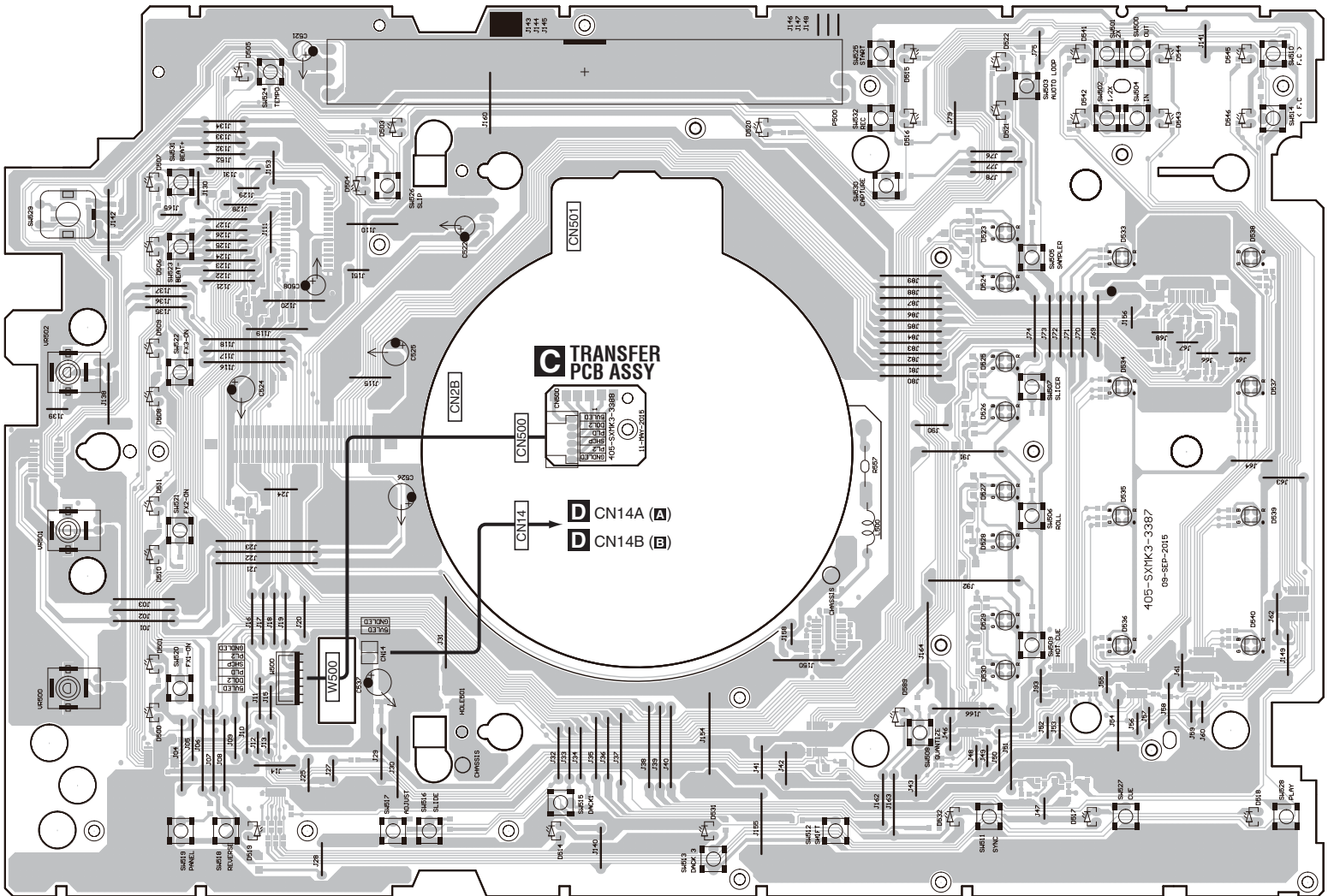
1. The parts mounted on this PCB include all necessary parts for several destinations. For further information for respective destinations, be sure to check with the schematic diagram.

2. View point of PCB diagrams.



A B C

A CONTROL PCB ASSY A  
B CONTROL PCB ASSY B



A B C

# 10 PCB CONNECTION DIAGRAM

SIDE A

1

2

3

4

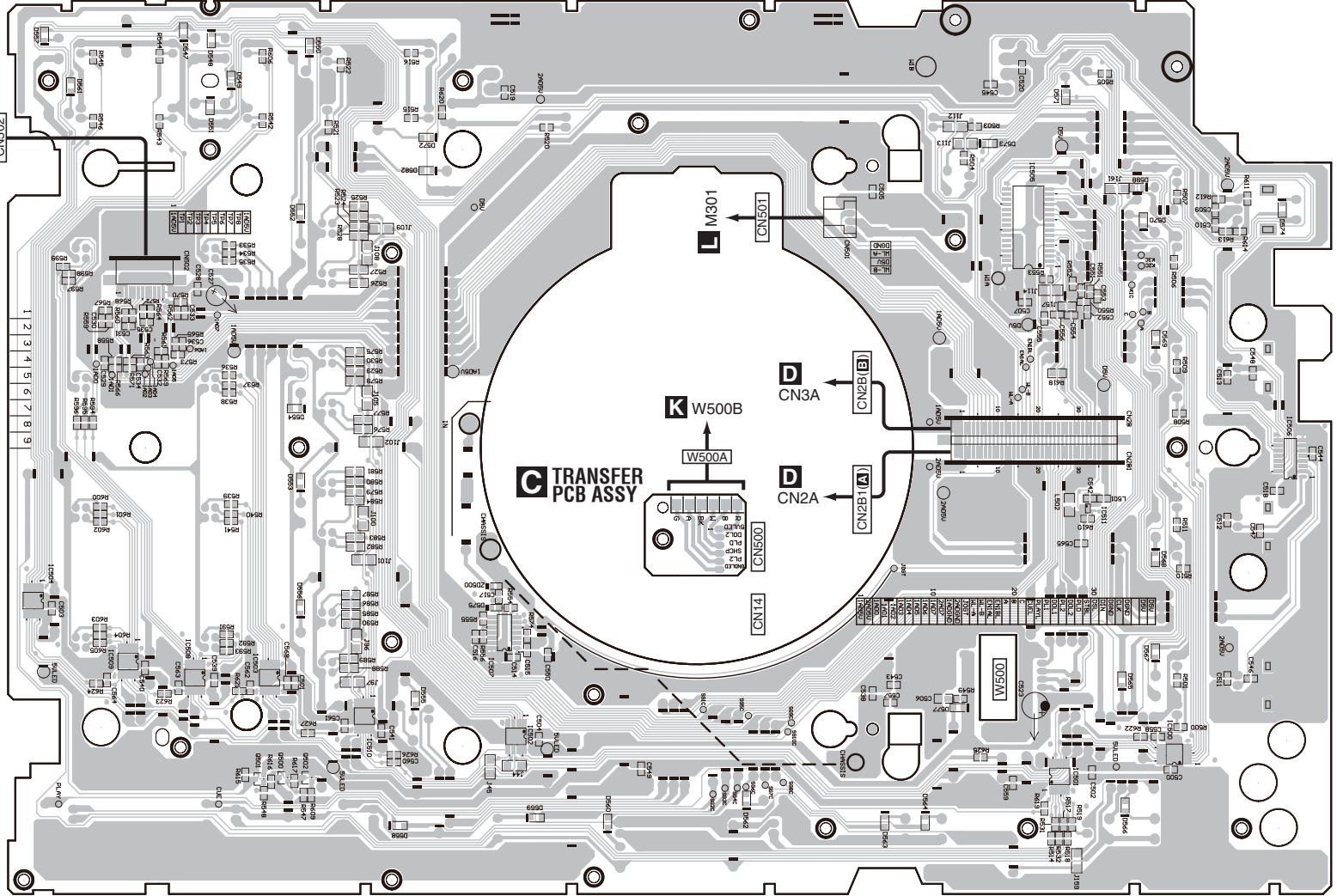
DDJ-RX

SIDE B

**A** CONTROL PCB ASSY A  
**B** CONTROL PCB ASSY B

SIDE B

CARBON PAD



5  
6  
7  
8

5  
6  
7  
8

DDJ-RX

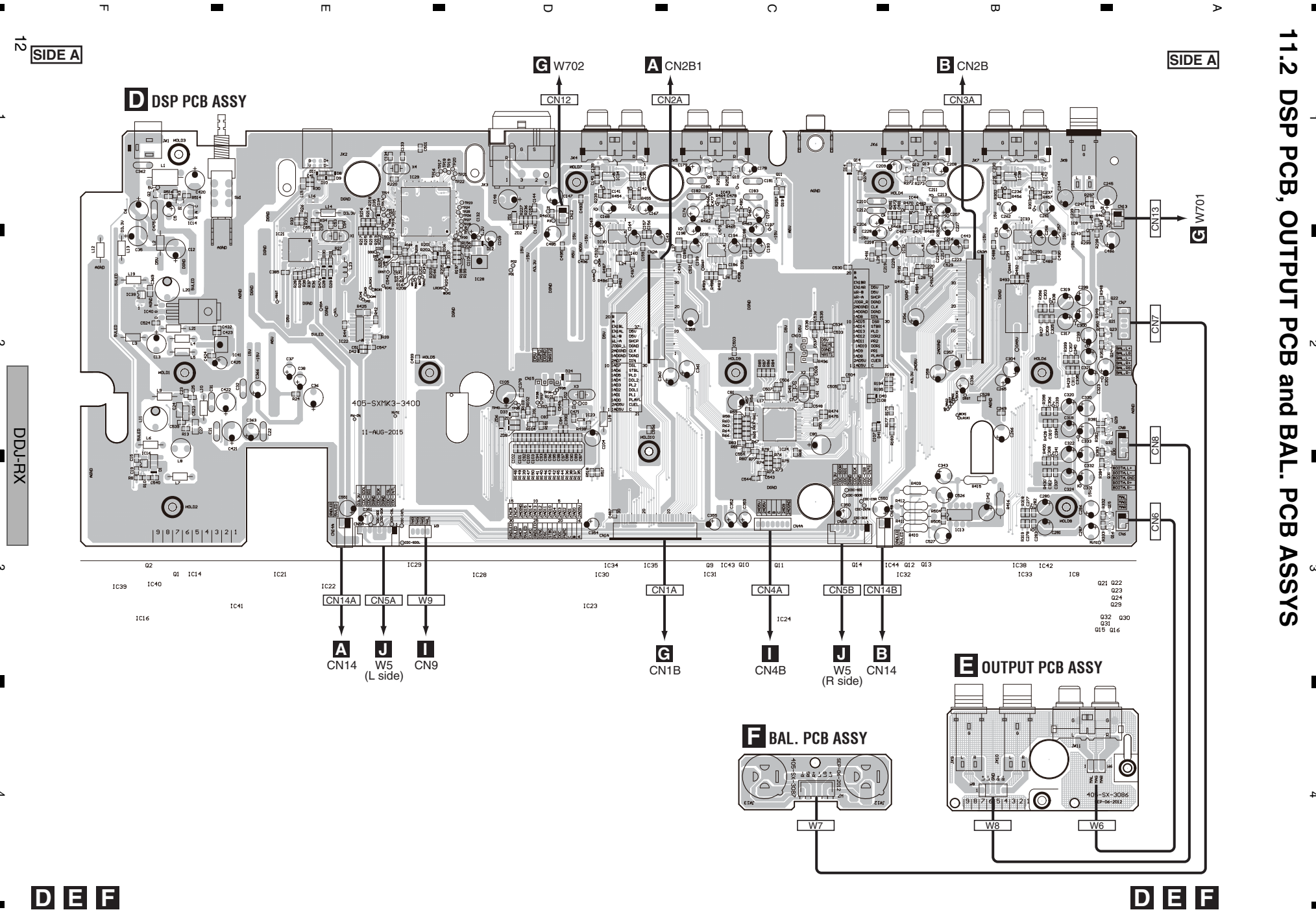
IC504 IC509 IC508 IC503 IC507 IC505 IC511 IC506  
 0501 0500 0502 IC510 IC502 IC500

11 **A B C**

**A B C**

F E D C B A

# 11.2 DSP PCB, OUTPUT PCB and BAL. PCB ASSYS



SIDE A

SIDE A

D DSP PCB ASSY

E OUTPUT PCB ASSY

F BAL. PCB ASSY

DDJ-RX

12

D E F

D E F

1

2

3

4

1

2

3

4

W701 G

CN7

CN8

CN6

G W702

A CN2B1

B CN2B

CN12

CN2A

CN3A

CN14A

CN5A

W9

A CN14

J W5

I CN9

(L side)

CN1A

G CN1B

CN4A

I CN4B

CN5B

J W5

CN14B

B CN14

(R side)

Q21 Q22

Q23 Q24

Q32 Q30

Q31 Q15

Q16

IC39 IC40

IC16

IC41

IC21

IC22

IC29

IC28

IC23

IC34

IC30

IC31

Q9 IC43 Q10

Q11

IC24

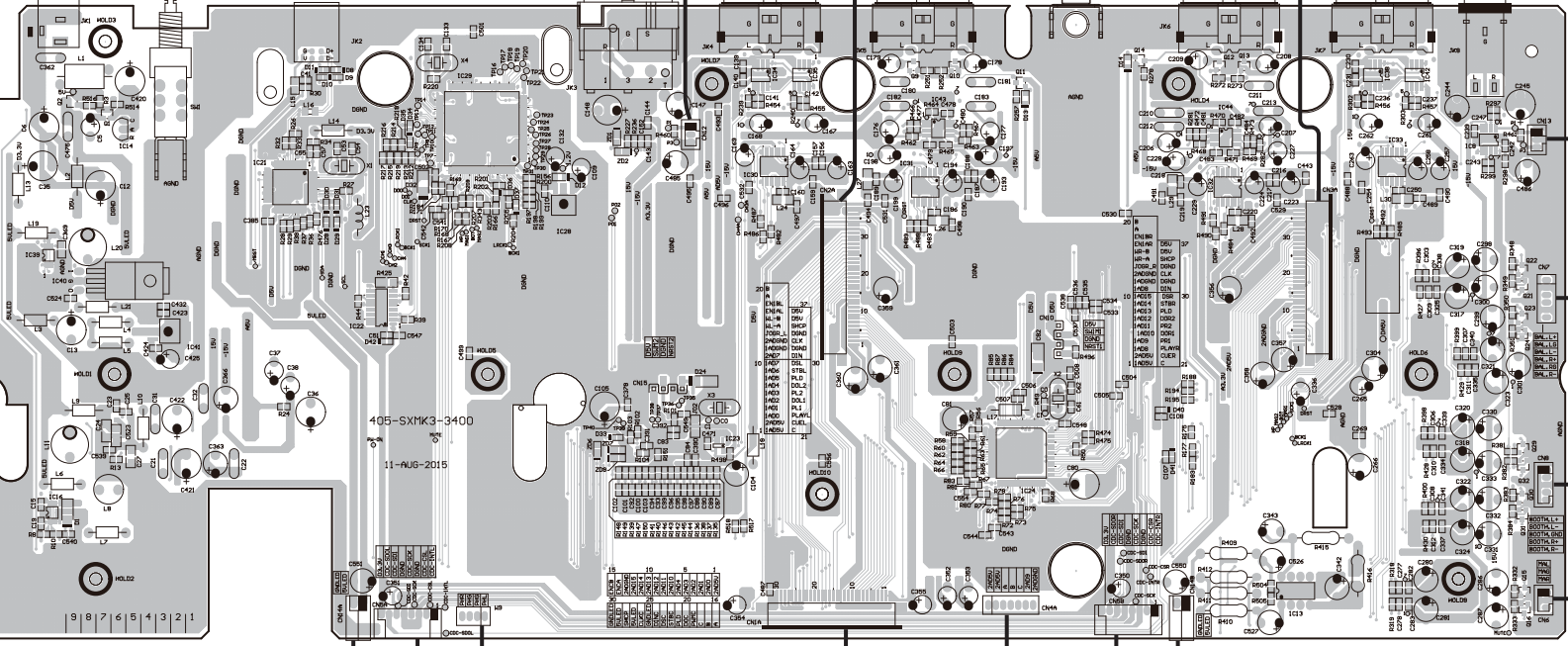
Q14

IC44 Q12 Q13

IC32

IC38 IC42

IC33 IC8

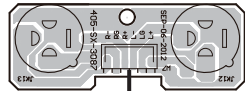
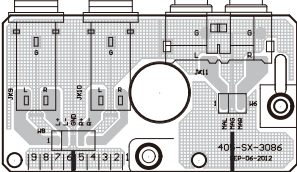
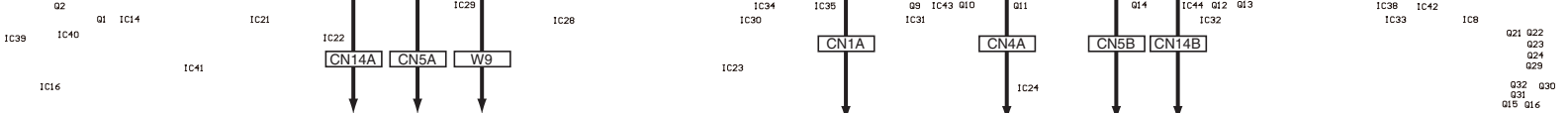


405-SXMK3-3400

11-AUG-2015

9 8 7 6 5 4 3 2 1

9 8 7 6 5 4 3 2 1



1

2

3

4

1

2

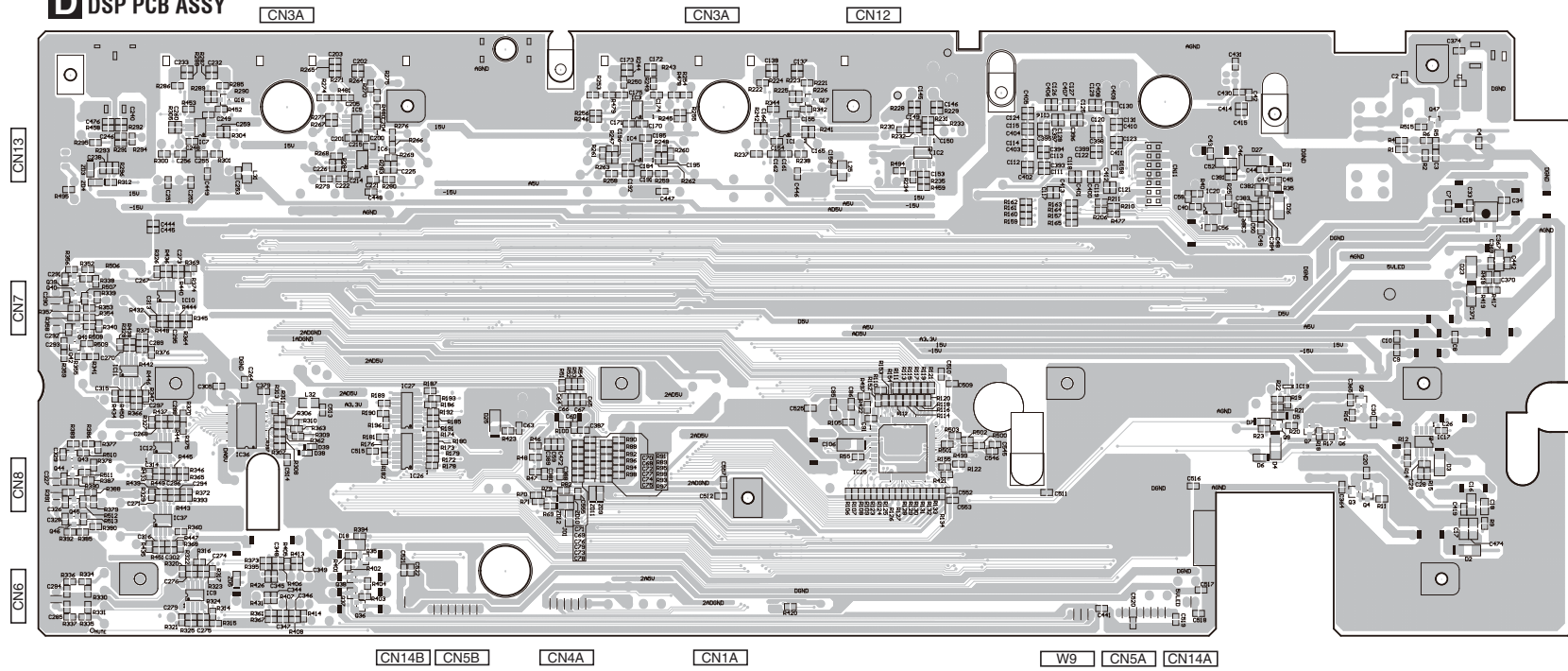
3

4

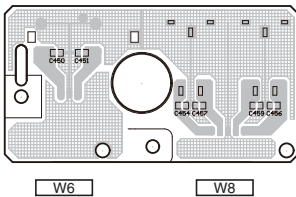
SIDE B

SIDE B

### D DSP PCB ASSY

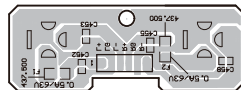


### E OUTPUT PCB ASSY



W6 W8

### F BAL. PCB ASSY



W7

DDJ-RX

13 DEF

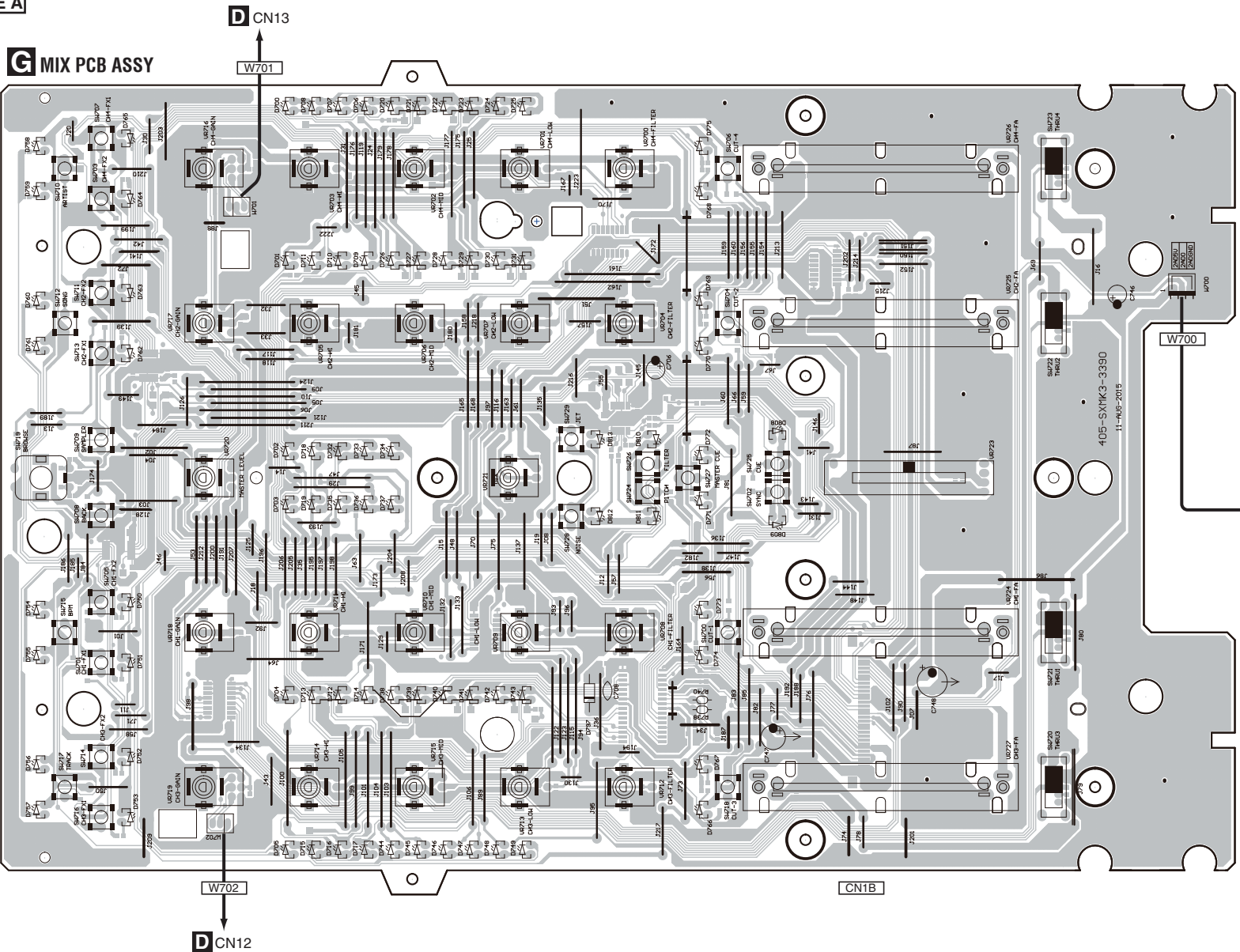
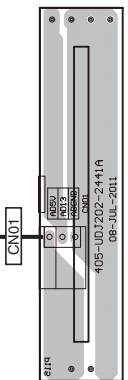
DEF

F E D C B A

# 11.3 MIX PCB and CR FADER PCB ASSYS

**SIDE A**

**CR FADER PCB ASSY**



**SIDE A**

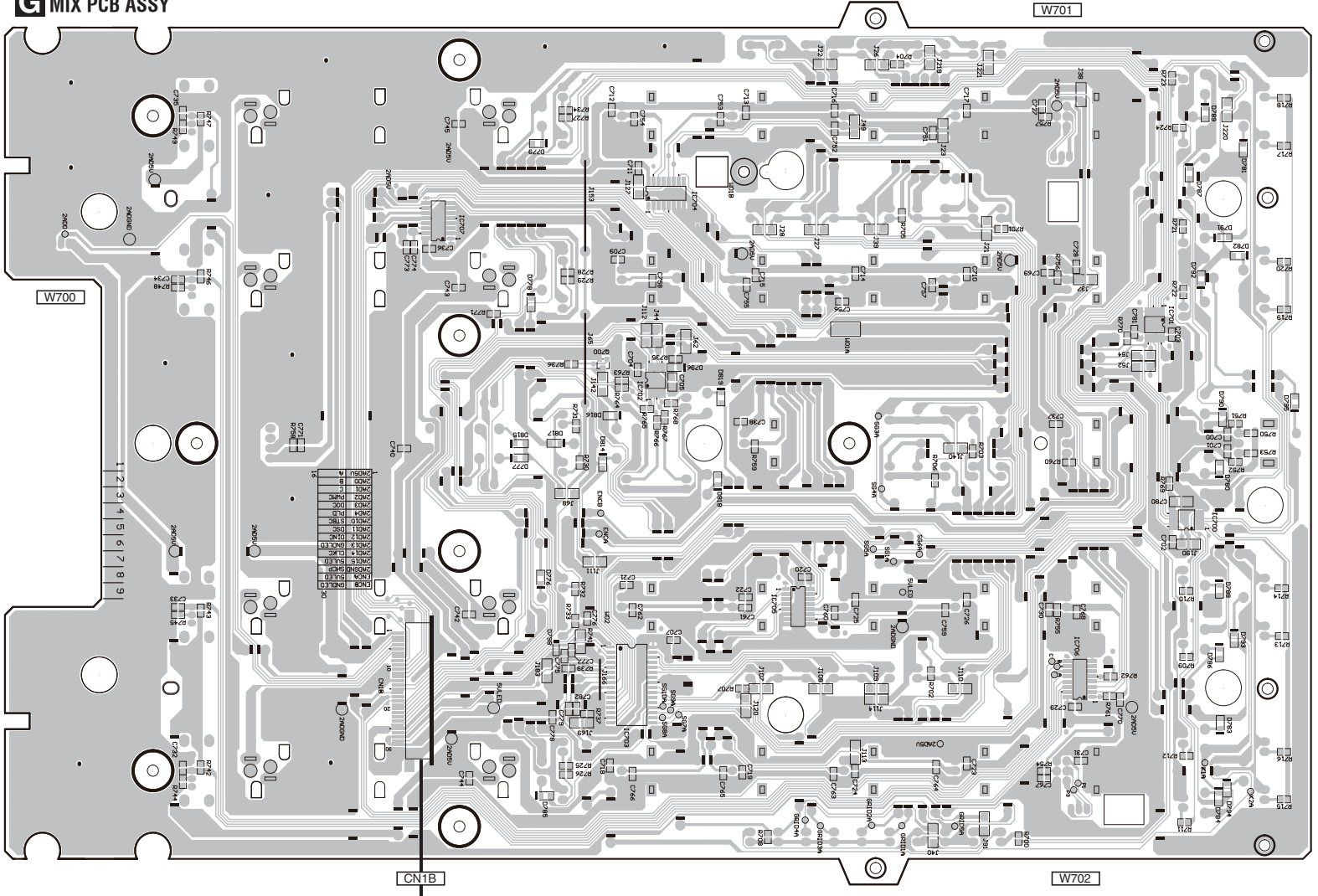
DDJ-RX

**G H**

**G H**

SIDE B

**G** MIX PCB ASSY



**G H**

A

B

C

D

E

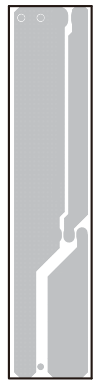
F

**G H**

15

SIDE B

**H** CR FADER PCB ASSY



DDJ-RX

5

6

7

8

5

6

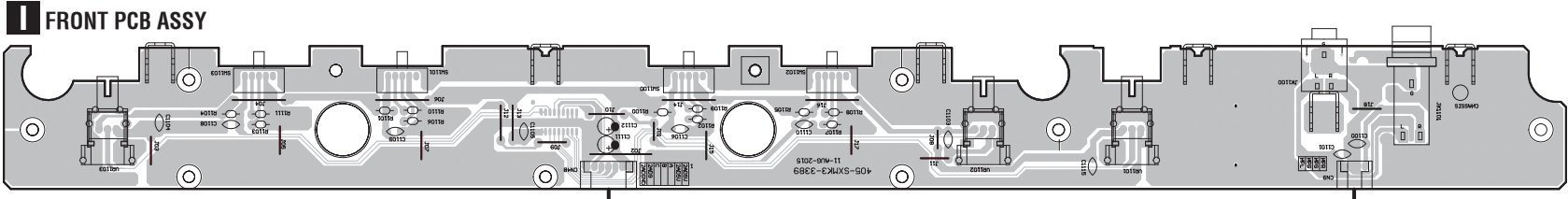
7

8

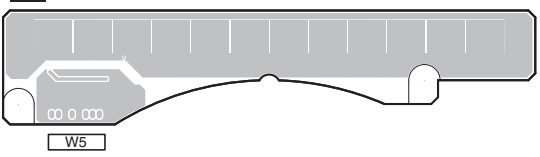
11.4 FRONT PCB and TOUCH PCB ASSYS

A

SIDE A

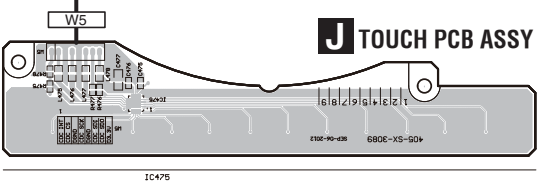


J TOUCH PCB ASSY

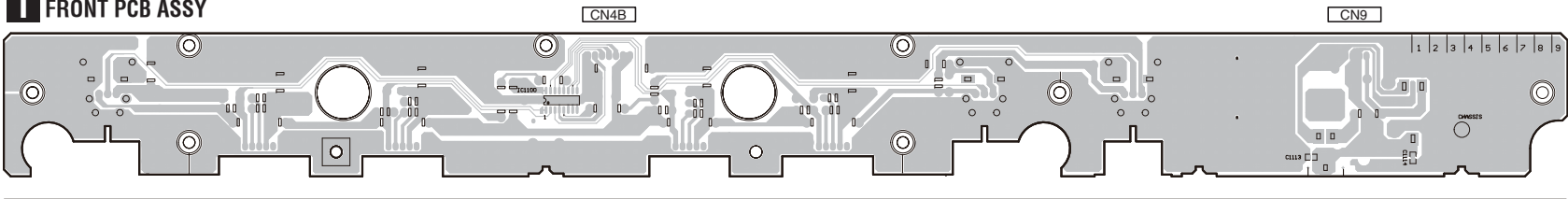


- D CN5A (L side)
- D CN5B (R side)

J TOUCH PCB ASSY



I FRONT PCB ASSY



IC1100

SIDE B

SIDE A

SIDE B

I J

I J

16

DDJ-RX

F

E

D

C

B

A

1

2

3

4

1

2

3

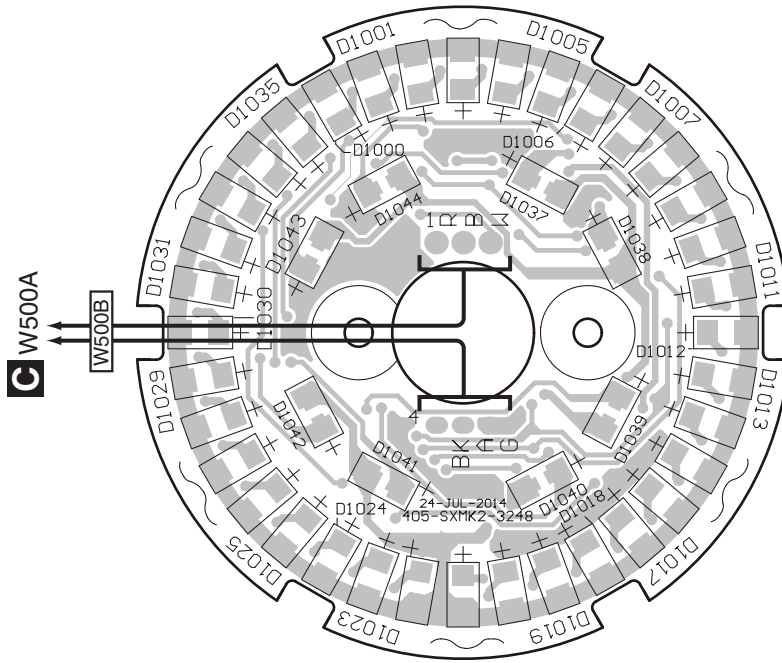
4



# 11.5 LED PCB and SENSOR ASSYS

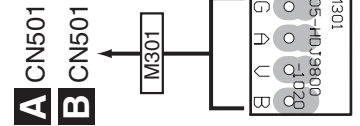
**SIDE A**

## **K** LED PCB ASSY



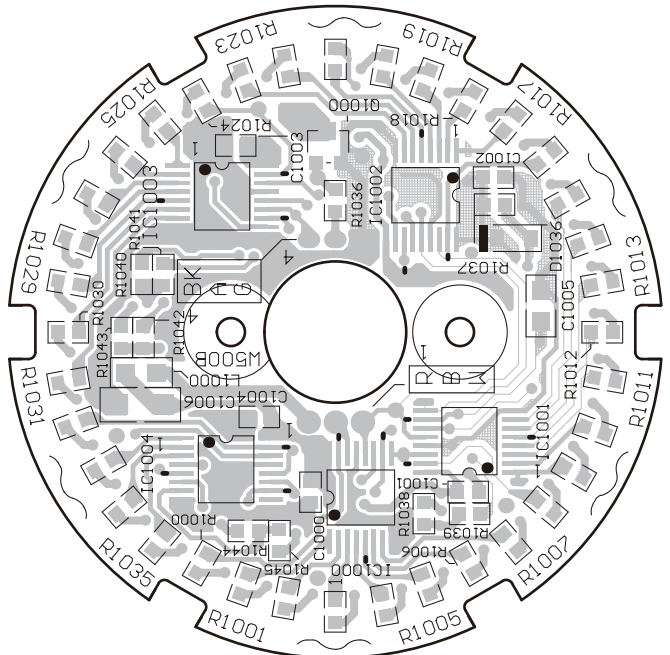
**SIDE A**

## **L** SENSOR PCB ASSY



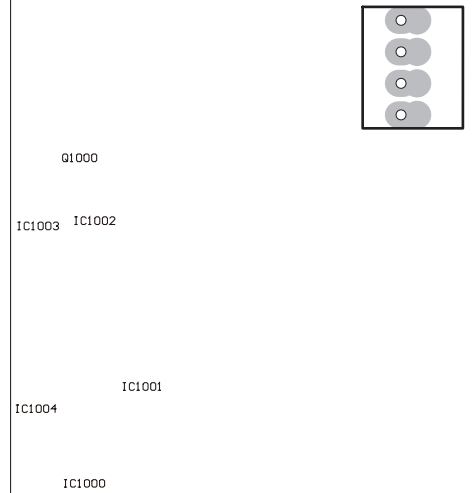
**SIDE B**

## **K** LED PCB ASSY



**SIDE B**

## **L** SENSOR PCB ASSY



**K L**

**K L**

DDJ-RX

# 12. PCB PARTS LIST

NOTES: ● Parts marked by "NSP" are generally unavailable because they are not in our Master Spare Parts List.

● The  $\Delta$  mark found on some component parts indicates the importance of the safety factor of the part. Therefore, when replacing, be sure to use parts of identical designation.

Mark No.	Description	Part No.
<b>LIST OF ASSEMBLIES</b>		
	1..GR FADER PCB ASSY	704-EN1000-9788
	1..SENSOR PCB ASSY	704-PDJ33-A007-HA
	1..MIX PCB ASSY	704-SXMK3-B255
	1..CONTROL PCB ASSY A	704-SXMK3-B252
	1..CONTROL PCB ASSY B	704-SXMK3-B253
	1..FRONT PCB ASSY	704-SXMK3-B254
	1..TOUCH PCB ASSY	704-S1MK2-A957
	1..TRANSFER PCB ASSY	704-SXMK3-B256
	1..I/O & FIXED PLATE ASSY	704-SXMK3-B272
	2..I/O PCB ASSY SERVICE	704-SXMK3-B332
	3..DSP PCB ASSY	704-SXMK3-B271
	2..OUTPUT PCB ASSY	704-S1MK2-A958
	1..BAL. PCB & FIXED P. ASSY	704-S1MK2-A986
	2..BAL. PCB ASSY	704-S1MK2-A956
	1..LED & COVER ASSY	704-S1MK2-A961
	2..LED PCB ASSY	704-S1MK2-A959

Mark No.	Description	Part No.
J	100-102,105 CHIP RESISTOR	412-DJ3000-414
J	108,109 CHIP RESISTOR	412-DJ3000-414
J	112-114,159 CHIP RESISTOR	412-DJ3000-414
J	157 CHIP RESISTOR	412-HV3500K-367
	VR 500-502 ROTARY VR	418-S1-694
CN2B	37P 1.0 FFC SOCKET	404-S1-3740
CN14	2P 2.5 CONNECT WIRE	404-S1MK2-3883
CN501	4P SOCKET	404-DCM270E3-878A-HA
CN502	10P FFC CONNECTOR LEADWIRE	404-CDMIX2-1142 406-HF6011B-523
	CHASSIS TO CHASSIS8 1P GROUND WIRE	406-S1-1239-HA
P	500 SLIDE VR(10*2)	418-S1-695-HA
SW500,501,502-526,530-532	TACT SW	403-DDJLE-419-HA
SW519	TACT SW **	403-DDJLE-419-HA
	** : CONTROL PCB ASSY A only	
SW527,528	TACT SW	403-DDJLE-416-HA
SW529	ENCODER	403-DDJLE-418-HA
W 500	6P 2.0 CONNECT WIRE	404-S1MK2-3886
	SPONGE(8*6*18MM) **	612-S1-451
	** : CONTROL PCB ASSY B only	

Mark No.	Description	Part No.
<b>A</b>	<b>CONTROL PCB ASSY A</b>	
<b>B</b>	<b>CONTROL PCB ASSY B</b>	
<b>SEMICONDUCTORS</b>		
D	IC 500-504,508-510	417-DDJLE-1080
	IC 506	417-MP3-429
	IC 507	417-RMP3-936
	IC 511	417-DDJLE-1078
	Q 500-502	416-MC6000-374
	D 503-505,516,519	410-DJ5000-253T
	D 507	410-CDI600-357T
	D 511,508,509,506	410-CDI600-357T
	D 514,500,501,510	410-CDI600-357T
	D 515,531	410-S1MK2-441
	D 517,521,522	410-HDJ2000-162T
	D 518	410-SXMK3-459
	D 520,532,545,546	410-DJ5000-253T
	D 523-530,533-540	410-MC7K-449
	D 541-544	410-HDJ2000-162T
	D 547-574,577,582	414-CD1000-075A-HA
	D 588	414-CD1000-075A-HA
	D 589	410-DJ5000-253T
	ZD 500,575 ESD DIODE	414-RMP3-285-HA

## RESISTORS

R	503,520	412-CDVD2001-521
R	504,506-511,515	412-CDVD2001-530
R	514,516,619,534	412-CDVD2001-530
R	519,545,505,546	412-CDVD2001-530
R	521,522,542-544	412-CDVD2001-554
R	523,526,529,576	412-DV330-335
R	524,527,530,577	412-DV330-333
R	525,528,575,578	412-80-959
R	531	412-007USB-698
R	533,536,539,591,594,597,600,603	412-007USB-782
R	537,540,592,595	412-CDVD2001-530
R	538,541,593,596	412-CDVD2001-530
R	547,548,609	412-900-983
R	549-552,612,613	412-CDVD2001-534
R	553	412-900-977
R	554	412-DCM280-726
R	555	412-MH2-1135
R	556	412-CDVD2001-540
R	557	412-3113-078-HA
R	559,558,560-565	412-007USB-699
R	566-573,500,501	412-CDVD2001-530
R	574,517,518,532	412-CDVD2001-554
R	579,582,585,588	412-DV330-335
R	580,583,586,589	412-DV330-333
R	581,584,587,590	412-80-959
R	598,601,604,535	412-CDVD2001-530
R	599,602,605	412-CDVD2001-530
R	606	412-CDVD2001-554
R	610	412-CD900-795
R	611,614	412-007USB-704
R	615-617,620	412-CDVD2001-534
R	618	412-DV330-306
R	621-627	412-007USB-697

## MISCELLANEOUS

L	500 INDUCTANCE	415-USOLOPA-342-HA
L	501 CHIP BEAD	415-COMBO-421
L	502 CHIP BEAD	415-EN2000-376
J	44,45,161 CHIP RESISTOR	412-DJ3000-414
J	96,97 CHIP RESISTOR	412-DJ3000-414

Mark	No.	Description	Part No.
<b>CAPACITORS</b>			
C	500-505,507		413-DCM280-773
C	506		413-100U-695
C	508		413-SPPW3-235-HA
C	509,510,529-536		413-DCM280-771
C	511-514,518-520		413-DCM280-773
C	516,558-564		413-DCM280-768
C	517		413-S1MK2-1337
C	521,522		413-CDVD2001-265-HA
C	523,537		413-CDN34-355-HA
C	525,524,527,526		413-HMA2200-5017-HA
C	528,538-543,549		413-DCM280-773
C	550,557		413-DCM280-773
C	551-553		413-DCM280-769
C	554-556		413-DCM280-767
C	556		413-900-931

## **C** TRANSFER PCB ASSY

### **MISCELLANEOUS**

6P SOCKET

404-90V1-101

## **D** DSP PCB ASSY

### **SEMICONDUCTORS**

	IC 1-12,37,43		417-ST150-599-HA
	IC 13		417-3113-018-HA
⚠	IC 16,39		417-200USB-1071
⚠	IC 17		417-PDJ33-1045-HA
⚠	IC 18,41		417-CTB200-500-HA
	IC 19		417-HDJ2000-503-HA
	IC 20		417-22SM-982
	IC 21		417-DAIA-711
	IC 22,26,27		417-IQ2UM-970A-HA
	IC 23		417-200USB-931
⚠	IC 28		417-IQ2UM-1004-HA
	IC 29		417-IQ2UM-941
	IC 30-33		417-IQ2UM-940-HA
⚠	IC 40		417-CDN34A-314
	IC 44		417-ST150-599-HA
	Q 1		416-CTB200-166-HA
	Q 2,3,47		416-UDJ200-347-HA
	Q 4,7,17,18		416-CDN88-044-HA
	Q 5		416-MC6000-373
	Q 6		416-CDN88-045-HA
	Q 8		416-HDJ9700-210
	Q 9,10,12		416-3000-378-HA
	Q 11,14		416-CTB200-178-HA
	Q 13,15,16,38,21-24,29-32,35-37,39-46		416-3000-378-HA
	D 1		414-MC6000-307
	D 3,4,18,23		414-007USB-148-HA
	D 6,5,7,12-14		414-CD1000-075A-HA
	D 24-27,32		414-COMBO-401
	D 8-11,28-31,34-39,40-42		414-DJ1100G-207-HA
	D 33		414-RMP3-285-HA
	ZD 5 ZENER DIODE		414-DDJLE-332-HA
	ZD 6-12 CHIP ZENER DIODE		414-DJM4000-331-HA

### **MISCELLANEOUS**

Mark	No.	Description	Part No.
L	1	CHOKE COIL	415-KM280A-021
L	8	INDUCTANCE	415-IM-302
L	11	CORE	415-PDJ33-381-HA
L	2,4-6,7,9,10,12-14,17,18,19,21	BEAD CORE	415-HV3500K-090-HA
L	15	TDK CHIP BEAD	415-FU801-316
L	16	TDK COMMON FILTERS	415-FU800-305-HA
L	20	CORE	415-MC2-401-HA
L	23	INDUCTOR(10UH T-26MM)	415-MPG100-047-HA
L	24-32	CHIP BEAD	415-EN2000-376
J	1	CHIP RESISTOR	412-HV3500K-367
J	2	CHIP RESISTOR	412-DJ3000-414
X	1	CRYSTAL	427-S1-143-HA
X	2,3	CRYSTAL	427-S1-144-HA
X	4	CRYSTAL	427-S1-145-HA
CN1A	30P	1.0 FFC SOCKET	404-S1-3739
CN2A,3A	37P	1.0 FFC SOCKET	404-S1-3740
CN4A	7P	CONNECOTR WIRE	404-S1-3760-HA
CN5A,5B	8P	SOCKET	404-DV300-506A
CN6,12,13	3P	SOCKET	404-HP1010K-259A-HA
CN7	6P	SOCKET	404-3113-052A-HA
CN8	5P	SOCKET	404-1210S-094A-HA
CN14A,14B	2P	2.5SOCKET FIXED PLATE ASS'Y CHIP RESISTOR	404-KMD1500-607A 703-200U-1170A-HA 412-CDVD2001-523
JK 1		DC POWER JACK	420-CDMIX1-078-HA
JK 2		USB JACK	420-S1-377-HA
JK 2		USB FIXED PLATE	300-S1-2069-HA
JK 3		MIC JACK	420-MH2-223-HA
JK 4-7		2P RCA JACK	420-CDN24A-051
JK 8		JACK GROUND PLATE	300-300-1171-HA
JK 8		3P HEADPHONE	420-CDMIX1-086
SW1		FIXED PLATE(M3*P0.5)	300-4500-2010A-HA
SW1		POWER SWICH	403-VP9812-162-HA
W 9		4P 2.0 CONNET WIRE	404-S1MK2-3885

### **RESISTORS**

R	1		412-DDJLE-1529
R	2		412-I1-1250
R	4,5,12,35		412-CDVD2001-540
R	6		412-007USB-700
R	8,30,245,246		412-007USB-704
R	9,15		412-007USB-703
R	10		412-007USB-1401
R	13,251,252,272		412-007USB-677
R	14,16-18		412-CDVD2001-532
R	20,21,227,247		412-CDVD2001-537
R	22,342,344,452		412-007USB-699
R	23		412-007USB-676
R	24,394,454-457		412-007USB-693
R	26		412-CDVD2001-550
R	27		412-CDVD2001-549
R	28,29,39		412-CD900-795
R	31,50-83		412-CDVD2001-521
R	32,33,42,44		412-CDVD2001-554
R	34		412-PDJ1-1291
R	36-38,221,222		412-CDVD2001-530
R	40		412-CDVD2001-545
R	49,105,220		412-CDVD2001-546
R	106-125,128-134		412-CDVD2001-521
R	152-154,184,230		412-CDVD2001-540
R	155,172-183		412-CDVD2001-521

**Mark No. Description**

**Part No.**

**Mark No. Description**

**Part No.**

A

R 157,3,46,158 412-CDVD2001-534  
 R 167-171 412-CD900-795  
 R 185-190,192-196 412-CDVD2001-521  
 R 191 412-007USB-781  
 R 197-203,420 412-CDVD2001-552

R 463,468,469 412-CDVD2001-534  
 R 466,467,472,473 412-007USB-693  
 R 471 412-007USB-699  
 R 474,475 412-007USB-782  
 R 478-481 412-HC1000S-1413  
 R 494,495 412-CDVD2001-537

R 204,205,218,219 412-CDVD2001-554  
 R 206-217,343,477 412-007USB-697  
 R 223-226,232,243 412-CDVD2001-532  
 R 228,229,292,458 412-900-994  
 R 231,295 412-007USB-671

R 496,497 412-007USB-673  
 R 499-503 412-CDVD2001-521  
 R 505,504 412-007USB-704  
 R 515,516,100,151 412-CDVD2001-552  
 R 518,101-104,156 412-CDVD2001-534

B

R 233,297 412-900-987  
 R 234,298 412-CDVD2001-543  
 R 235,299 412-900-992  
 R 236,294,296,422 412-CDVD2001-540  
 R 237,238,249,250 412-CDVD2001-530

**CAPACITORS**

C 5,167,168,176 413-SPPW3-235-HA  
 C 6,12 413-HT8015-169-HA  
 C 7-10,15,20 413-DCM280-773  
 C 13,363,366,266 413-MC6000-1191-HA  
 C 16,17,24,27 413-MC6000-1180

R 239,240,260,261 412-CDVD2001-534  
 R 241,242,262,263 412-900-1006  
 R 244,264,265 412-CDVD2001-532  
 R 248,257,268,269 412-CDVD2001-537  
 R 253,254,274,275 412-900-1060

C 19 413-DCM280-769  
 C 23,26,30,33 413-DCM280-773  
 C 25 413-M207-1090  
 C 28,347,348 413-100U-695  
 C 28,347,348 413-007USB-788

C

R 255,256,276,277 412-900-974  
 R 258,259,270,271 412-CDVD2001-530  
 R 266,339-341,267 412-007USB-704  
 R 273,401-404 412-007USB-677  
 R 278,293,330,331 412-CDVD2001-537

C 29,149,150,152 413-007USB-784  
 C 34,39-51,59 413-DCM280-773  
 C 35,36,80,105 413-007USB-828-HA  
 C 37,132,178,179 413-CDVD2001-265-HA  
 C 38,109,169,199 413-HMA2200-5017-HA

R 279,280,285,286 412-CDVD2001-530  
 R 281,282,302,303 412-CDVD2001-534  
 R 283,284,304,305 412-900-1006  
 R 287-291 412-CDVD2001-532  
 R 300,301,310,312 412-CDVD2001-530

C 52,367,371,474 413-MC6000-1180  
 C 55,141,142,165 413-DCM280-767  
 C 56,58 413-810-922  
 C 57,370,414,445 413-DCM280-768  
 C 60,63,83,84 413-DCM280-773

D

R 306-309,362,363 412-CDVD2001-554  
 R 314-317 412-G9900-1196  
 R 318-321,326-329 412-900-992  
 R 322-325,436-451 412-810-966  
 R 332,333,348-351 412-CDVD2001-540

C 61,62,85,86 413-007USB-783  
 C 64-79,87-90 413-DCM280-771  
 C 81,104,354-361 413-HT801K-192-HA  
 C 82,106 413-MAIE-1211-HA  
 C 91,107,108 413-DCM280-773

R 334,335 412-900-1010  
 R 336,337 412-900-1014  
 R 338,377-380,417 412-007USB-704  
 R 345-347,360 412-CDVD2001-534  
 R 352-355,385-388 412-DJM250-1488

C 92-103,161,162 413-DCM280-771  
 C 110-131,139,140 413-DCM280-773  
 C 133,134,53,54 413-900-926  
 C 137,138,145,146 413-007USB-787  
 C 143,144,154-160 413-DCM280-773

E

R 356-359,389-392 412-007USB-782  
 R 361,367,373,395 412-900-992  
 R 364-366,368-372 412-CDVD2001-534  
 R 374-376,393,462 412-CDVD2001-534  
 R 381-384,506-513 412-CDVD2001-540

C 147,244,485,486 413-DM1000-346  
 C 148,245 413-HC1421FR-277  
 C 153,243,541-546 413-DCM280-767  
 C 163,164,193,194 413-SPPW3-236-HA  
 C 166,195,196,225 413-DCM280-767

R 396,398-400 412-900-992  
 R 397,486-493 412-CDVD2001-554  
 R 405-408,421 412-CDVD2001-521  
 R 409,410 412-CDG11-466-HA  
 R 411,412 412-SA12-566-HA

C 170,171,184-190 413-DCM280-773  
 C 172-175,202,204 413-007USB-787  
 C 177,197,198,206 413-SPPW3-235-HA  
 C 180,181,210,211 413-205-958A-HA  
 C 182,183,212,213 413-900-934A-HA

F

R 413,414,426,431 412-900-1002  
 R 415,416 412-HT801K-219-HA  
 R 418 412-007USB-702  
 R 419 412-900-977  
 R 423 412-CDVD2001-540

C 191,192,221,222 413-DCM280-771  
 C 200,201,214-220 413-DCM280-773  
 C 205,232,233,240 413-007USB-787  
 C 207,227,228,261 413-SPPW3-235-HA  
 C 208,209,350,351 413-CDVD2001-265-HA

R 425 412-DJ3000-414  
 R 427-430,432-435 412-900-992  
 R 453,464,465,470 412-007USB-699  
 R 459,476,482-485 412-CDVD2001-530

C 223,224,257,258 413-SPPW3-236-HA  
 C 226,259,260,236 413-DCM280-767

Mark No.	Description	Part No.
C 229,263		413-HMA2200-5017-HA
C 230,231,238,239		413-DCM280-773
C 237,344-346,349		413-DCM280-767
C 242,246,247		413-007USB-784
C 248-254,264,269		413-DCM280-773
C 255,256,446-449		413-DCM280-771
C 262,336		413-SPPW3-235-HA
C 265		413-810-920
C 267,268,270,271		413-007USB-827
C 284,285,290-293		413-007USB-787
C 289,294-296,302		413-DCM280-768
C 297,273-275,288		413-DCM280-768
C 298-301		413-HT801K-193-HA
C 303,276-279		413-007USB-827
C 304,280,281		413-MC6000-1191-HA
C 305,364,368,374		413-DCM280-773
C 306-316,419		413-007USB-827
C 317-324		413-MC6000-1191-HA
C 326-329,476,203		413-007USB-787
C 330-333,286,287		413-HT801K-193-HA
C 342,343		413-SPPW3-237-HA
C 362		413-QSPAND-632-HA
C 378-380,423,424		413-DCM280-773
C 420		413-6K2-1296
C 421,422		413-DV300-292-HA
C 425,352		413-CDVD2001-265-HA
C 430-432,441,442		413-DCM280-773
C 443,1-3		413-DCM280-773
C 444,472,478,479		413-DCM280-773
C 475		413-X050-1058-HA
C 477,480,481,484		413-DCM280-767
C 482,483,487-492		413-DCM280-773
C 495-499,501-503		413-DCM280-773
C 504-507,509,510		413-CDVD2003-716
C 508,511-522,524		413-DCM280-773
C 523		413-MC6000-1180
C 525,494,493		413-DCM280-773
C 526,527		413-KT300-102
C 528-532,539,540		413-DCM280-773
C 533-536,552,553		413-CDVD2003-716
C 547,556,557		413-DCM280-773
C 549,537,538,548		413-CDVD2003-716
C 550,551		413-007USB-828-HA
C 554,555		413-007USB-781

## **E** OUTPUT PCB ASSY

### MISCELLANEOUS

	JACK GROUND PLATE	300-300-1171-HA
W 6	3P CONNCOCTR WIRE	404-S1-3754-HA
W 8	5P 2.0 CONNECTWIRE	404-S1MK2-3881
JK 9,10	3P HEADPHONE	420-CDMIX1-086
JK 11	2P RCA JACK	420-CDN24A-051

## **F** BAL.PCB ASSY

### MISCELLANEOUS

W 7	6P 2.0 CONNECT WIRE	404-S1MK2-3879
JK 12,13	XLR JACK	420-S1-375A
F 1,2	SMD FUSE	422-S1-111-HA



Mark No.	Description	Part No.
<b>G MIX PCB ASSY</b>		
<b>SEMICONDUCTORS</b>		
	IC 700-702	417-DDJLE-1080
	IC 704,705,707	417-QSPAND-432-HA
	IC 706	417-MP3-429
	Q 700	416-MC6000-374
	D 700-705,809	410-DJ5000-253T
	D 706	410-HDJ2000-162T
	D 720-749	410-SXMK3-459
	D 750-755,760-765	410-CDI600-357T
	D 756-759	410-S1MK2-441
	D 776-796,814-819	414-CD1000-075A-HA
	D 797	414-DFX1-144-HA
	D 798	414-RMP3-285-HA
	D 810-813	410-CDI600-357T

### MISCELLANEOUS

J 21-23,26-28	CHIP RESISTOR	412-DJ3000-414
J 65,153	1P LEAD WIRE	406-SXMK3-1352
J 37-40,44,49,52,54,62,68,91	CHIP RESISTOR	412-DJ3000-414
J 107-111,113,114,120,127	CHIP RESISTOR	412-DJ3000-414
J 140,142,169,183,190	CHIP RESISTOR	412-DJ3000-414
J 166	1P WIRE	406-S1MK2-1307
J 219-221,112	CHIP RESISTOR	412-DJ3000-414

VR 700-715	ROTARY VR(20KB)	418-S1-693-HA
VR 716,719	ROTARY VR	418-S1MK2-726
VR 717,718,720,721	ROTARY VR(20KB)	418-S1-694-HA
VR 723	SLIDE VR	418-SXMK3-748
VR 724-727	SLIDE VR	418-S1MK2-725

CN1B	30P 1.0 FFC SOCKET	404-S1-3739
	SPACER	612-SX2-450
SW700-718,724-729	TACT SW	403-DDJLE-419-HA
SW719	ENCODER	403-DDJLE-418-HA
SW720-723	SLIDE SW	403-ID-333-HA

W 01A	1P GROUND WIRE	406-MH2-825
W 700	CONNCOCTR WIRE	404-S1-3756-HA
W 701	3P 2.0 CONNECTOR WIRE	404-S1MK2-3906
W 702	3P 2.0 CONNECT WIRE	404-S1MK2-3884

### RESISTORS

R 700-708		412-810-966
R 709-714,719-724		412-CD900-795
R 715-718		412-ID-1296
R 725-734,763		412-CDVD2001-554
R 735,751,752,739		412-CDVD2001-534

R 737,736		412-CDVD2001-540
R 740,738		412-3113-068-HA
R 741		412-M207-1308
R 742-749		412-I1-1250
R 750,753		412-007USB-704

R 754-760		412-007USB-1401
R 761,762		412-CDVD2001-552
R 764		412-CDVD2001-530
R 765-768		412-CD900-795
R 769,770		412-007USB-697

R 771		412-CDVD2001-534
-------	--	------------------

### CAPACITORS

C 700,701,732-735		413-DCM280-771
C 706		413-HMA2200-5017-HA

**Mark No. Description**

C 707  
C 708  
C 702-704,736-738,740,742-745,

**Part No.**

413-DCM280-773  
413-3113-035-HA  
413-DCM280-77

C 746  
C 747  
C 748  
C 767,770,709-731  
C 775,776,778,779

413-DV300-5155-HA  
413-HMA2200-5017  
413-CDN34-355-HA  
413-DCM280-773  
413-DCM280-767

C 777  
C 780  
C 781  
C 782

413-900-931  
413-300MXA-1322  
413-DCM280-768  
413-DCM280-767

**H CR FADER PCB ASSY****MISCELLANEOUS**

CN 01 3P SOCKET  
116 PC SHEET

404-KMD3500-609A-HA  
501-EN2000-2469

**RESISTORS**

P 115 SLIDE VR

418-EN2000-427

**I FRONT PCB ASSY****SEMICONDUCTORS**

IC 1100

417-MP3-429

**MISCELLANEOUS**

VR 1102,1103,1101 VR FIXED PLATE  
VR 1102 ROTARY VR  
VR 1103,1101 ROTARY VR  
CN 04 7P SOCKET  
CN 9 4P SOCKET

300-6000-1874-HA  
418-SXMK3-749  
418-S1MK2-735  
404-HMD5000-785A-HA  
404-DCM270E3-878A-HA

SPACER  
FIXED PLATE(M3\*P0.5)  
PH FIXED PLATE  
FIXED PLATE  
SPACER

612-SX2-459  
300-4500-2010A-HA  
300-S1-2061-HA  
300-SC1M-1621-HA  
501-MAIE-2451

CHASSIS9 1P GROUND WIRE  
JK 1100 HEADPHONE JACK  
JK 1101 3P HEADPHONE  
SW1100-1103 SLIDE SW

406-S1-1240-HA  
420-HDJ7100-063  
420-CDMIX1-086  
403-S1-420-HA

**RESISTORS**

R 1100  
R 1108

412-DFX1-653-HA  
412-DV300-291-HA

**CAPACITORS**

C 1100,1101  
C 1103-1106,1108-1110,1115  
C 1112  
C 1113,1114

413-3113-041  
413-3113-035-HA  
413-CDVD2001-265-HA  
413-DCM280-773

**J TOUCH PCB ASSY****SEMICONDUCTORS**

IC 475

417-S1-1081

**MISCELLANEOUS**

W 5 8P 2.0 CONNEC WIRE  
L 475-478 CHIP BEAD

404-S1MK2-3882  
415-JKME3-369

**CAPACITORS****Mark No. Description**

C 475,476  
C 477

**Part No.**

413-DCM280-773  
413-MC6000-1180

**K LED PCB ASSY  
SEMICONDUCTORS**

IC 1000-1004  
Q 1000  
D 1000-1035  
D 1036  
D 1037-1044

417-DDJLE-1080  
416-MC6000-374  
410-S1-419  
414-CD1000-075A-HA  
410-HDJ9700-214

**MISCELLANEOUS**

A 1P SIGNAL WIRE  
B 1P SIGNAL WIRE  
BK 1P SIGNAL WIRE  
G 1P SIGNAL WIRE  
W 1P SIGNAL WIRE

407-S1MK2-256  
407-S1MK2-252  
407-S1MK2-254  
407-S1MK2-255  
407-S1MK2-253

L 1000 CHIP BEAD

415-1300-240A

**RESISTORS**

R 1P SIGNAL WIRE

407-S1MK2-251

**CAPACITORS**

C 1000-1004  
C 1006

413-DCM280-773  
413-MC6000-1180

**L SENSOR PCB ASSY****SEMICONDUCTORS**

M 301

417-PS2-504

**MISCELLANEOUS**

M 301 4P CONNECTOR WIRE

404-PDJ33-3591V-HA