

Pioneer

Service Manual

ORDER NO.
RRV4464

DJ CONTROLLER

DDJ-S1

/CLPUVYXJ5

THIS MANUAL IS APPLICABLE TO THE FOLLOWING MODEL(S) AND TYPE(S).

Model	Type	Power Requirement	Remarks
DDJ-S1	CLPUVYXJ5	AC 100 V to 240 V	

This model is an integrated type of Europe, North America and General district model of DDJ-S1.

The bundled software is changed from "ITCH" to "Serato DJ".

This service manual should be used together with the following manual(s).

Model No.	Order No.	Remarks
DDJ-S1/SVYXJ8	RRV4168	DDJ-S1/SVYXJ8, /UXJCB, /FLPXJ

For SPECIFICATIONS and PANEL FACILITIES, refer to the operating instructions.

PIONEER CORPORATION 1-1, Shin-ogura, Saiwai-ku, Kawasaki-shi, Kanagawa 212-0031, Japan

PIONEER ELECTRONICS (USA) INC. P.O. Box 1760, Long Beach, CA 90801-1760, U.S.A.

PIONEER EUROPE NV Haven 1087, Keetberglaan 1, 9120 Melsele, Belgium

PIONEER ELECTRONICS ASIACENTRE PTE. LTD. 253 Alexandra Road, #04-01, Singapore 159936

©PIONEER CORPORATION 2013

K-ZZZ JUNE 2013 Printed in Japan

1. CONTRAST OF MISCELLANEOUS PARTS

NOTES: ● Parts marked by "NSP" are generally unavailable because they are not in our Master Spare Parts List.

● The \triangle mark found on some component parts indicates the importance of the safety factor of the part. Therefore, when replacing, be sure to use parts of identical designation.

● Screws adjacent to ∇ mark on product are used for disassembly.

● For the applying amount of lubricants or glue, follow the instructions in this manual.

(In the case of no amount instructions, apply as you think it appropriate.)

● Nos. indicate the pages and Nos. in the service manual for the base model.

● When ordering resistors, first convert resistance values into code form as shown in the following examples.

Ex.1 When there are 2 effective digits (any digit apart from 0), such as 560 ohm and 47k ohm (tolerance is shown by J=5%, and K=10%).

560 Ω \rightarrow 56 x 10¹ \rightarrow 561 RD1/4PU561J
 47k Ω \rightarrow 47 x 10³ \rightarrow 473 RD1/4PU473J
 0.5 Ω \rightarrow R50 RN2HR50K
 1 Ω \rightarrow 1R0 RS1P1R0K

Ex.2 When there are 3 effective digits (such as in high precision metal film resistors).

5.62k Ω \rightarrow 562 x 10¹ \rightarrow 5621 RN1/4PC5621F

CONTRAST TABLE

DDJ-S1/SVYXJ8, DDJ-S1/UXJCB, DDJ-S1/FLPXJ and DDJ-S1/CLPUVYXJ5 are constructed the same except for the following:

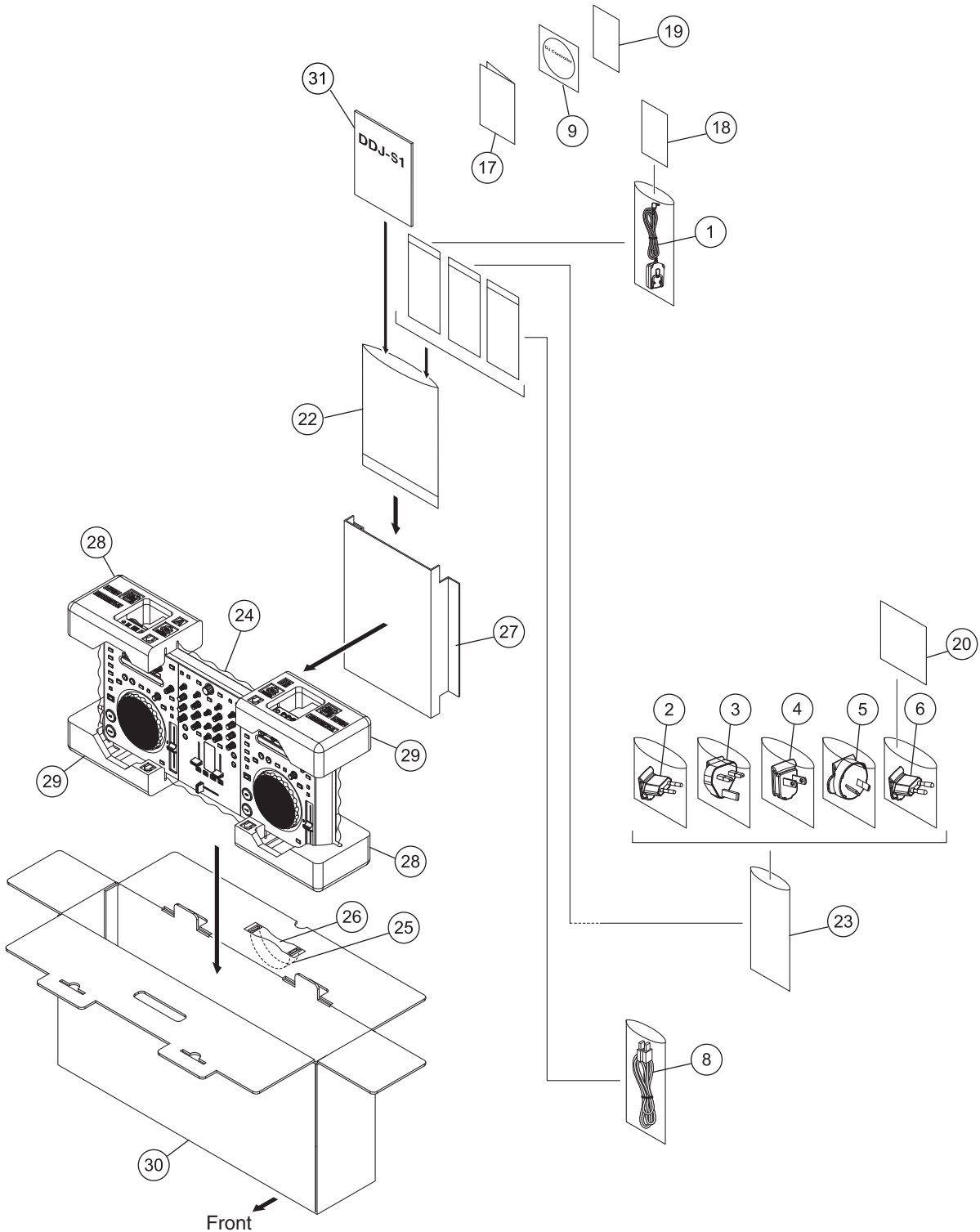
Mark	No.	Symbol and Description	DDJ-S1 /SVYXJ8	DDJ-S1 /UXJCB	DDJ-S1 /FLPXJ	DDJ-S1/ CLPUVYXJ5	Remarks
		PACKING SECTION					
\triangle	P51-1	AC Adapter	DWR1539	DWR1539	DWR1539	DWR1539	
\triangle	P51-2	Power Plug (EU)	DKX1048	Not used	DKX1048	DKX1048	
\triangle	P51-3	Power Plug (UK)	DKX1049	Not used	DKX1049	DKX1049	
\triangle	P51-4	Power Plug (US)	Not used	DKX1047	DKX1047	DKX1047	
\triangle	P51-5	Power Plug (AUS)	Not used	Not used	DKX1050	DKX1050	
\triangle	P51-6	Power Plug (KO)	Not used	Not used	DKX1051	DKX1051	
	P51-9	CD-ROM	DXX2690	DXX2690	DXX2690	DXX2720	
NSP		Operating Instructions (En)	Not used	Not used	Not used	DRI1136	
NSP		Operating Instructions (Fr)	Not used	Not used	Not used	DRI1137	
NSP		Operating Instructions (De)	Not used	Not used	Not used	DRI1138	
NSP		Operating Instructions (It)	Not used	Not used	Not used	DRI1139	
NSP		Operating Instructions (Es)	Not used	Not used	Not used	DRI1140	
NSP		Operating Instructions (Ru)	Not used	Not used	Not used	DRI1141	
NSP		Operating Instructions (NI)	Not used	Not used	Not used	DRI1142	
NSP		WIN Driver-soft/DDJ	Not used	Not used	Not used	DXX2731	
	P51-10	Operating Instructions (En/Fr/De)	DRB1593	Not used	Not used	Not used	
	P51-11	Operating Instructions (It/NI)	DRB1594	Not used	Not used	Not used	
	P51-12	Operating Instructions (Es/Ru)	DRB1595	Not used	Not used	Not used	
	P51-13	Operating Instructions (En)	Not used	DRB1592	Not used	Not used	
	P51-14	Operating Instructions (En/Es/Zhtw)	Not used	Not used	DRB1596	Not used	
NSP	P51-17	Warranty Card	ARY7158	Not used	Not used	ARY7158	
	P51-20	Caution Card/PLG	Not used	Not used	DRM1346	DRM1346	
	P51-23	Vinyl Bag	Not used	Not used	Z21-013	Z21-013	
	P51-30	Packing Case	DHG3087	DHG3088	DHG3089	DHG3274	
		Quick Start Guide	Not used	Not used	Not used	DRH1221	No. 31
		EXTERIOR SECTION					
	P53-15	Level Plate	DAH2851	DAH2851	DAH2851	Not used	
	P53-15	Panel/LVL	Not used	Not used	Not used	DAH2926	
	P53-16	CDC Sheet	DEC3357	DEC3357	DEC3357	Not used	
	P53-16	Sheet/CDC	Not used	Not used	Not used	DEC3467	
		BUTTON LAYER SECTION					
	P59-8	Rev Button	DAC2741	DAC2741	DAC2741	Not used	
	P59-8	Button/CNS	Not used	Not used	Not used	DAC2909	
	P59-10	Load A Button	DAC2743	DAC2743	DAC2743	Not used	

Mark	No.	Symbol and Description	DDJ-S1 /SVYXJ8	DDJ-S1 /UXJCB	DDJ-S1 /FLPXJ	DDJ-S1/ CLPUVYXJ5	Remarks
	P59-10	Button/LD1	Not used	Not used	Not used	DAC2907	
	P59-22	Load B Button	DAC2756	DAC2756	DAC2756	Not used	
	P59-22	Button/LD2	Not used	Not used	Not used	DAC2908	
	P59-24	1..Panel Assy	DXB2112	DXB2123	DXB2123	DXB2140	
	P59-25	2..Control Panel	DNK5930	DNK5930	DNK5930	DNK6198	*
	P59-27	2..Rear Panel	DNK5932	DNK6051	DNK6051	DNK6199	

Notes : The numbers in the remarks column correspond to the numbers on the "EXPLODED VIEWS".

* Refer to next page about change details of the Control Panel Printing.

EXPLODED VIEWS PACKING SECTION



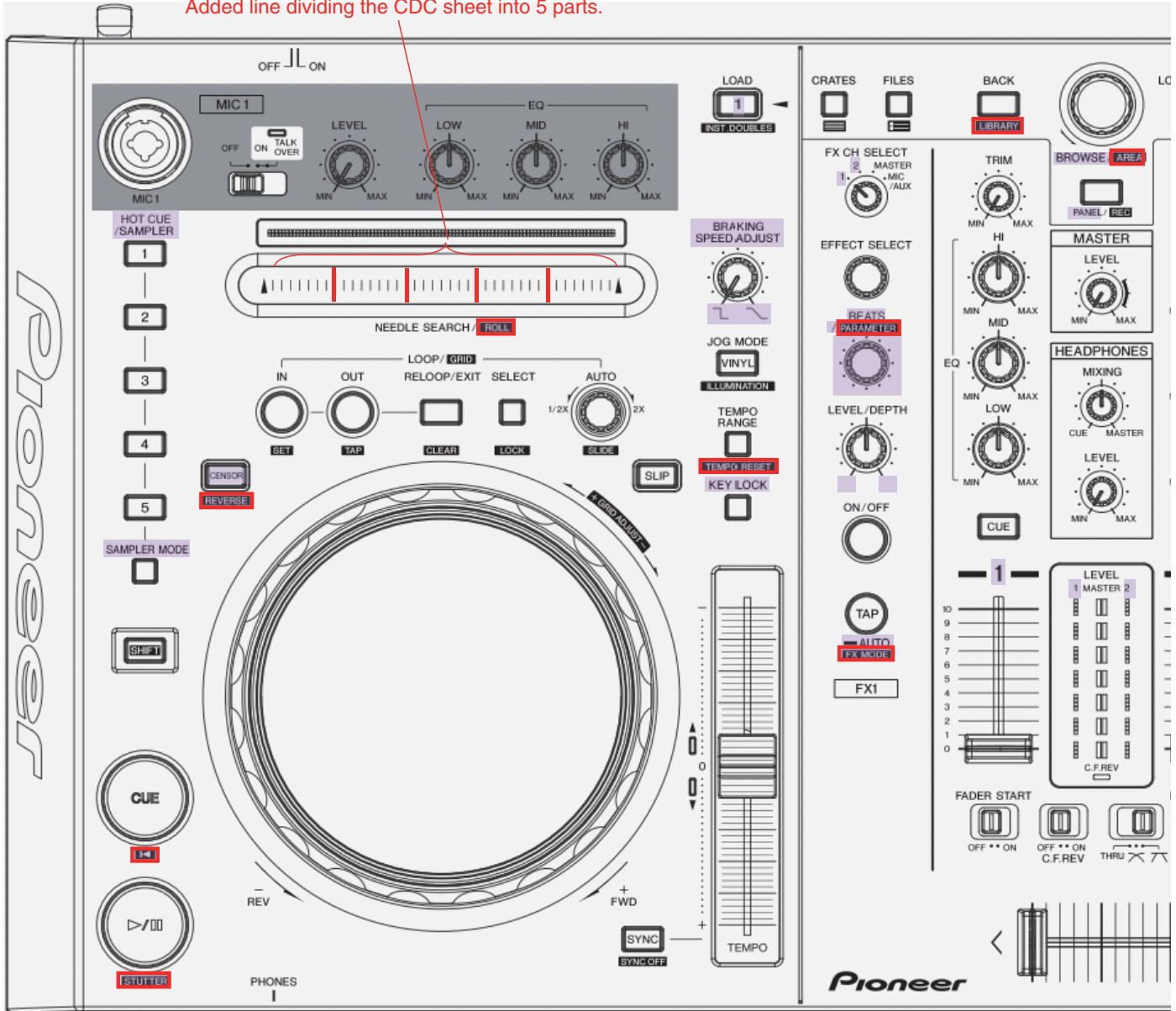
PRINTING CHANGE OF THE CONTROL PANEL FROM DDJ-S1 (ORIGINAL MODEL)

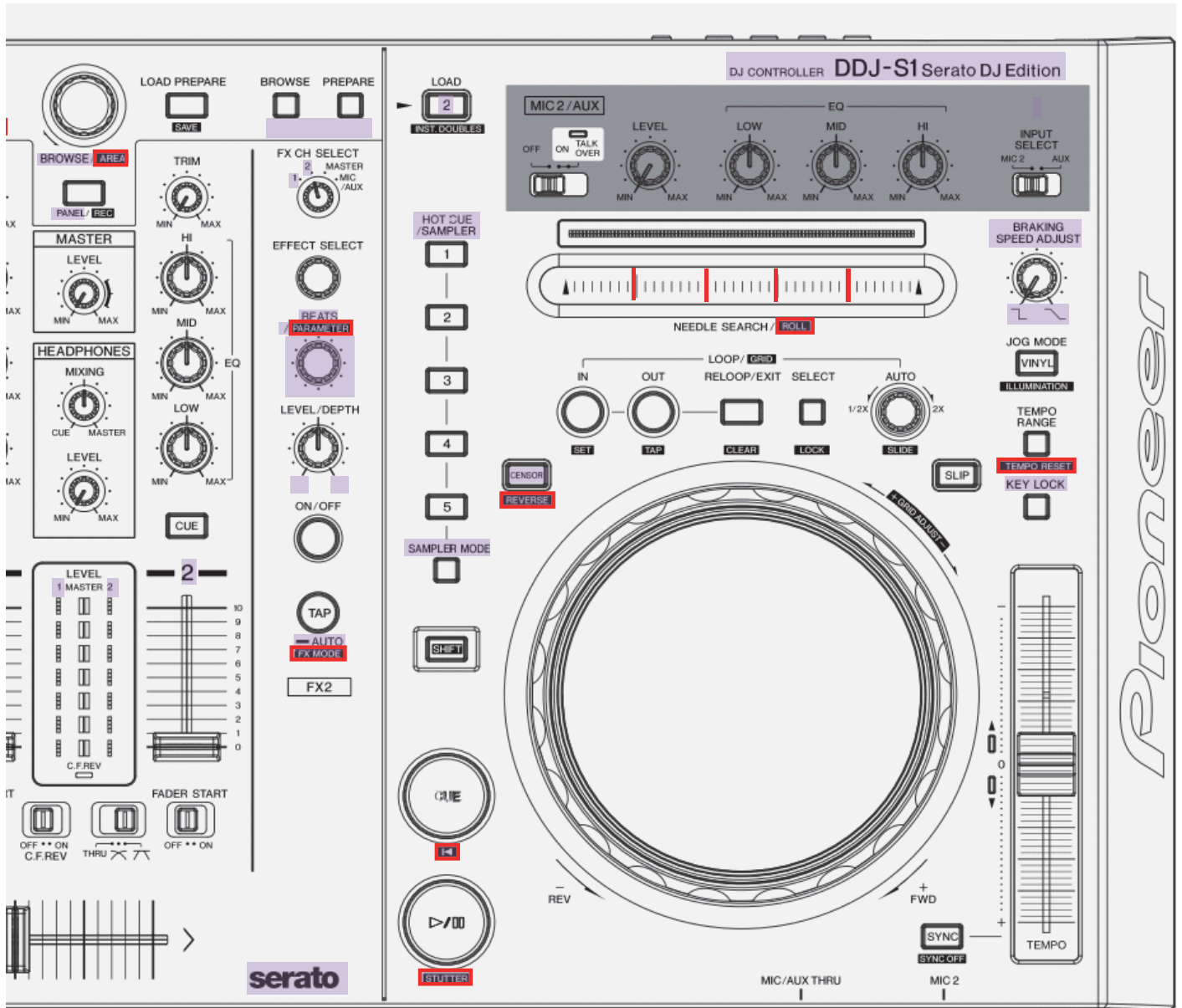
DDJ-S1 Serato DJ Edition Printing Contents

**** Display changed from DDJ-S1

**** +SHIFT operating function keys added and changed from DDJ-S1

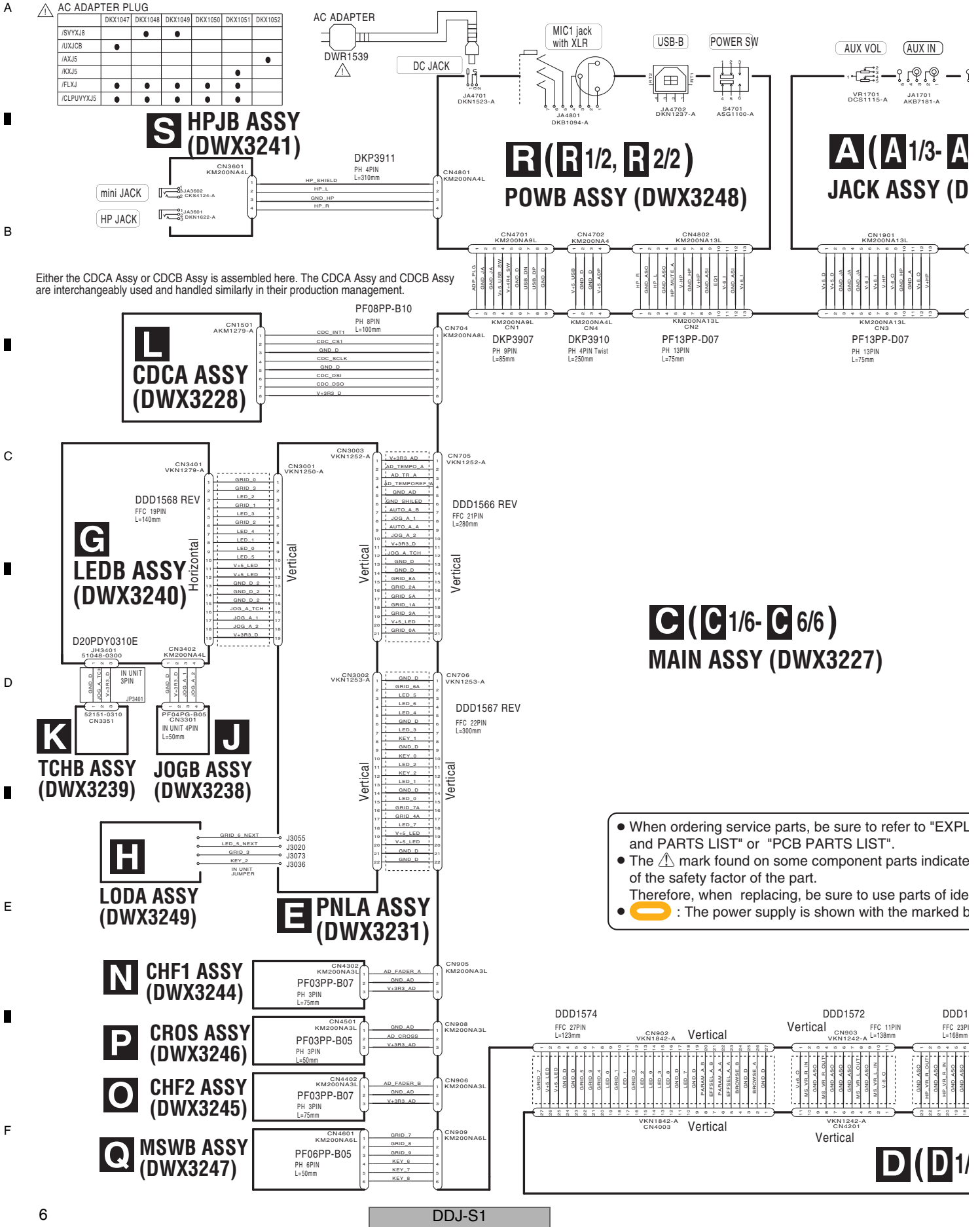
Added line dividing the CDC sheet into 5 parts.

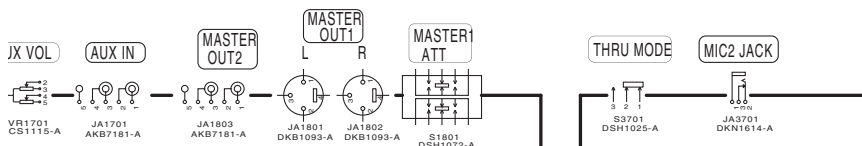




2. BLOCK DIAGRAM

2.1 OVERALL WIRING DIAGRAM

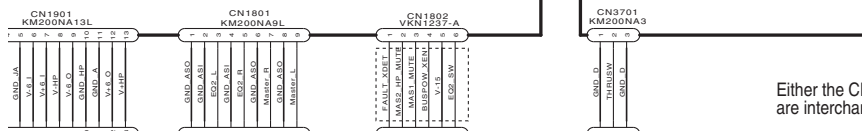




(A 1/3- A 3/3)
CK ASSY (DWX3230)

B
MIC2 ASSY (DWX3242)

STPB ASSY (DWX3280)



PF13PP-D07
 PH 13PIN
 L=75mm

DKP3907
 PH 5PIN
 L=85mm

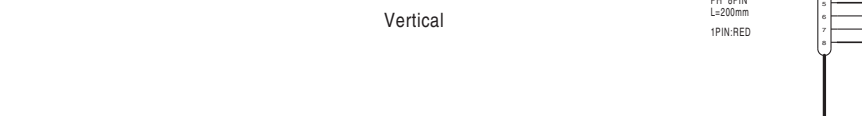
DDD1562 REV
 FFC 6PIN
 L=128mm

DKP3908
 PH 3PIN
 L=130mm

PF08PP2B20
 PH 8PIN
 L=200mm
 1PIN:RED

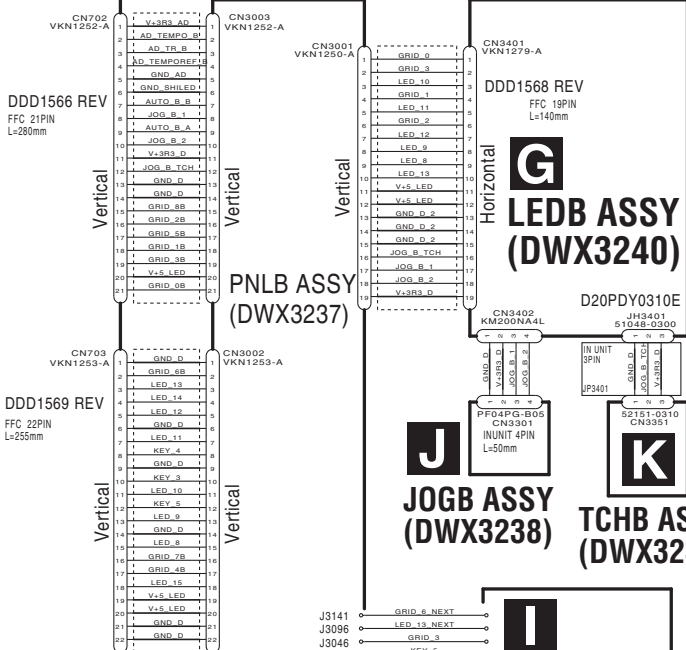
M
CDCB ASSY (DWX3229)

Either the CDCA Assy or CDCB Assy is assembled here. The CDCA Assy and CDCB Assy are interchangeably used and handled similarly in their production management.



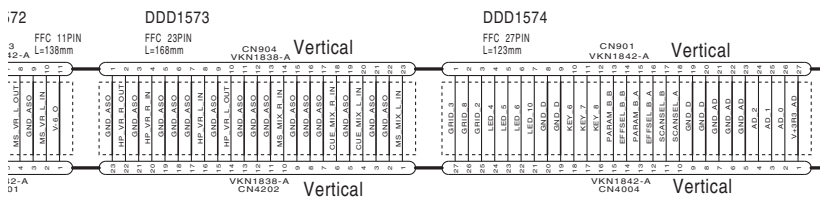
27)

Refer to "EXPLODED VIEWS LIST".
 Component designations in bold text indicate the importance of parts to use parts of identical designation.
 Marked with the marked box.



F
PNLB ASSY (DWX3237)

I
LOGB ASSY (DWX3250)



D (D 1/2- D 2/2)
DJMB ASSY (DWX3243)