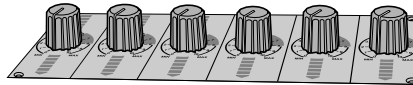


Service Manual



DJC-1000RV

ORDER NO.
RRV3132

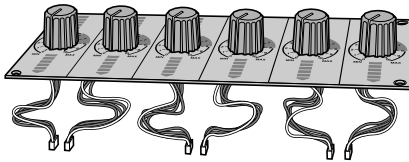
ROTARY VOLUME KIT

DJC-1000RV

ZXJ/WL

- This kit has been designed for use with the DJ Mixer DJM-1000 and allow the mixer's standard slider-typefader controls to be replaced by rotary-type controls.
- Reference service manual : Model No.DJM-1000, Order No.RRV3121

Package Contents



Rotary Volum kit
(DJC-1000RV)



Instruction manual (x 1)
(DRC1262)

Confirm Package Contents

- Fader Unit x1
- This Installation Manual x1
- Warranty Card (for USA) x1
- Warranty Card (for Japan) x1

WARNING: Handling the cord on this product or cords associated with accessories sold with the product will expose you to lead, a chemical known to the State of California and other governmental entities to cause cancer and birth defects or other reproductive harm.

Wash hands after handling



This service manual is intended for qualified service technicians ; it is not meant for the casual do-it-yourselfer. Qualified technicians have the necessary test equipment and tools, and have been trained to properly and safely repair complex products such as those covered by this manual. Improperly performed repairs can adversely affect the safety and reliability of the product and may void the warranty. If you are not qualified to perform the repair of this product properly and safely, you should not risk trying to do so and refer the repair to a qualified service technician.


WARNING

This product contains lead in solder and certain electrical parts contain chemicals which are known to the state of California to cause cancer, birth defects or other reproductive harm.

Health & Safety Code Section 25249.6 – Proposition 65

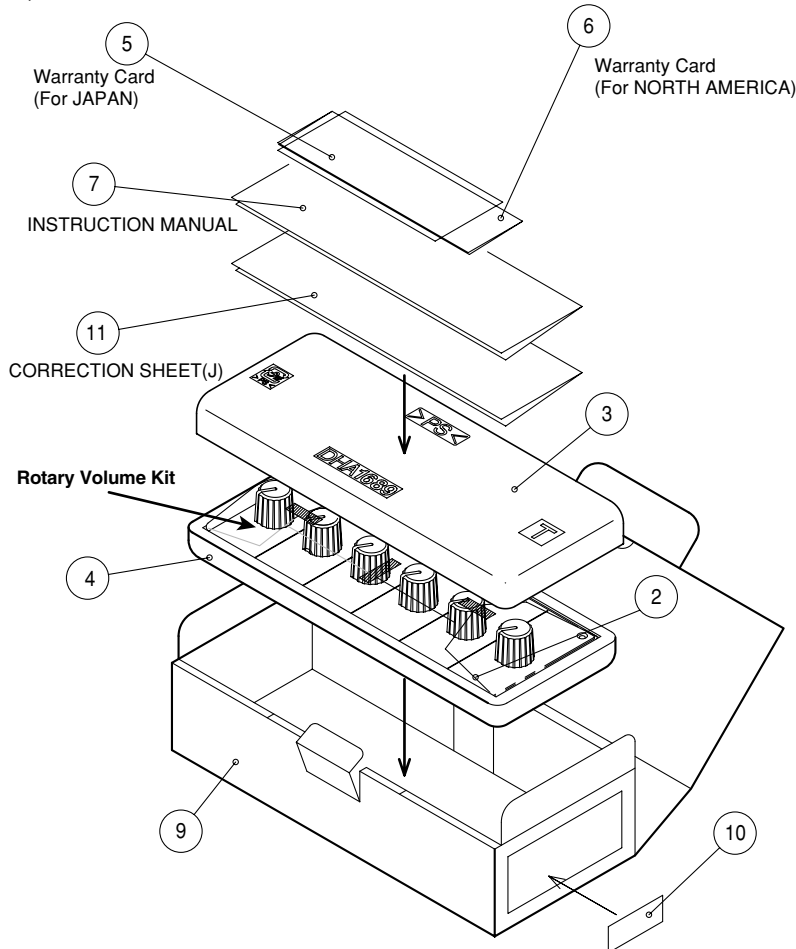
1. EXPLODED VIEWS AND PARTS LIST

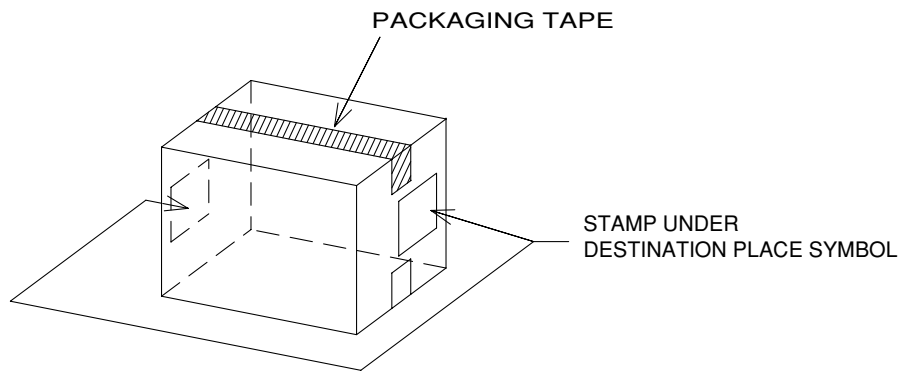
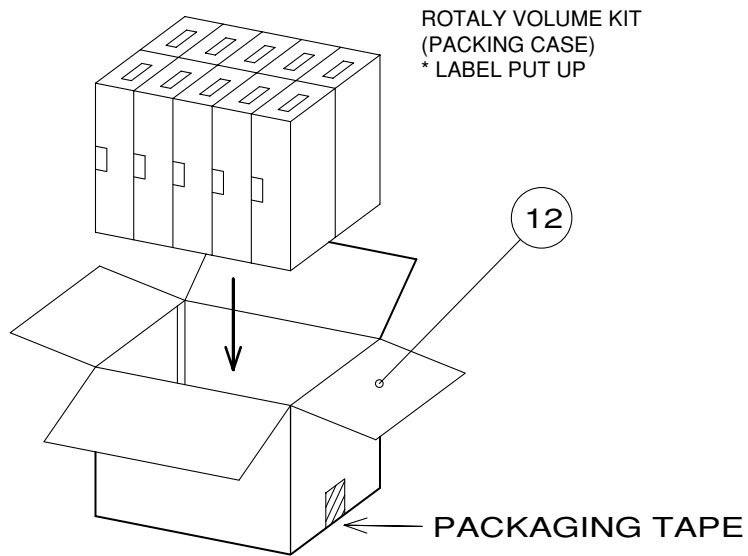
NOTES:

- Parts marked by "NSP" are generally unavailable because they are not in our Master Spare Parts List.
- The  mark found on some component parts indicates the importance of the safety factor of the part. Therefore, when replacing, be sure to use parts of identical designation.

1.1 PACKING

(PACKING CASE)

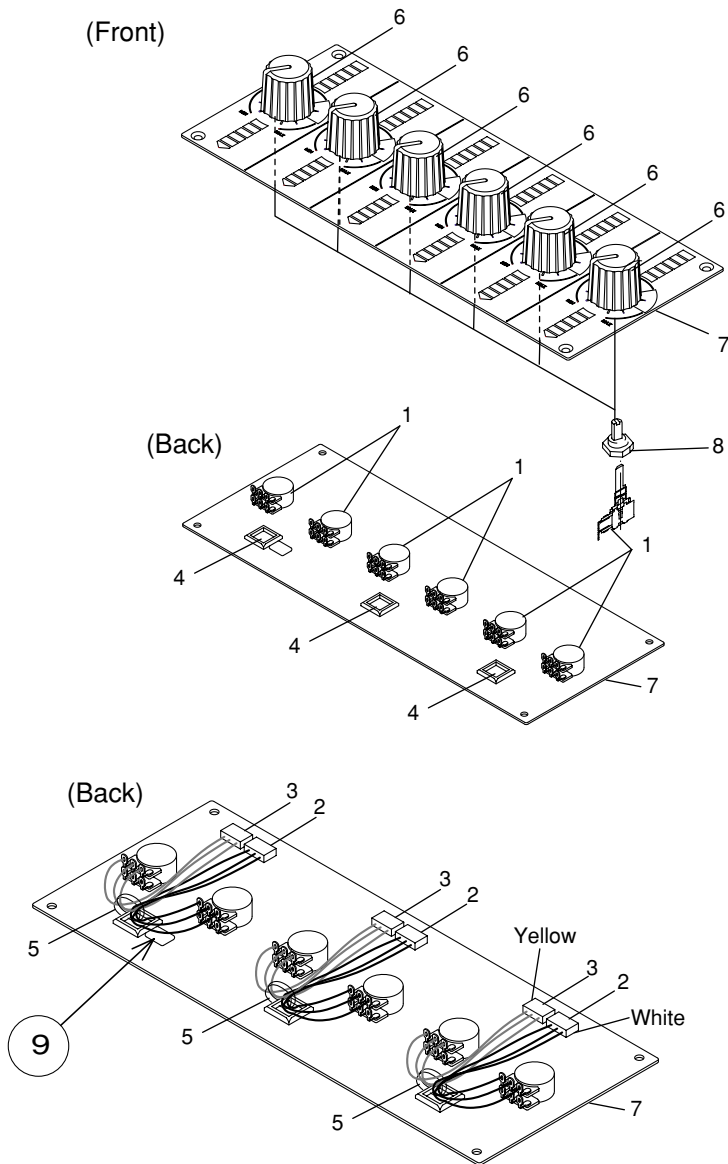




● Packing Parts

Mark	No.	Description	Part No.
	1	••••	
	2	Mirror Mat Sheet	DHL1147
	3	Top Pad	DHA1689
	4	Bottom Pad	DHA1688
NSP	5	Warranty Card (Japan)	DRY1235
NSP	6	Warranty Card (North America)	ARY7043
	7	Instruction Manual	DRC1262
	8	••••	
	9	Packing Case	DHG2551
	10	Label	VRW1629
NSP	11	Correction Sheet(J)	DRM1266
	12	Master Carton	DHG2552

1.2 EXTERIOR SECTION



● Exterior Parts

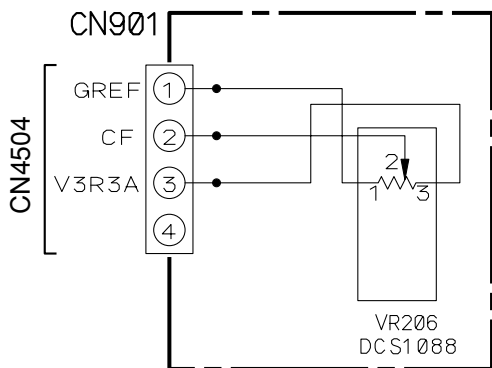
Mark	No.	Description	Part No.
	1	Rotary Volume	DCS1088
	2	Connector Ass'y (W)	DKP3738
	3	Connector Ass'y (Y)	DKP3739
	4	Backed Mount	DEC2171
	5	Binder(SKB-90BK)	ZCA-SKB90BK
	6	VR Knob	DAA1165
	7	CHA Panel	DAH2391
	8	Nut M7	DBN1011
	9	CE Mark Label (UP)	RRW1221

2. SCHEMATIC DIAGRAM

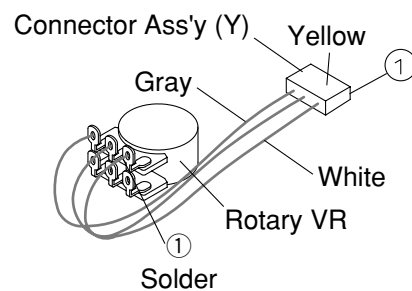
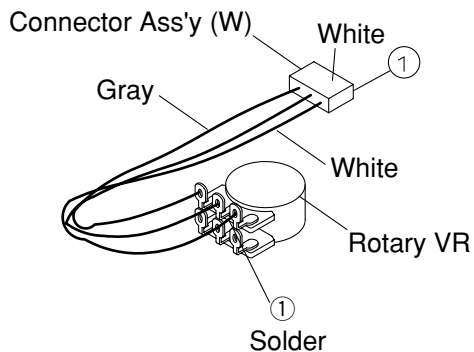
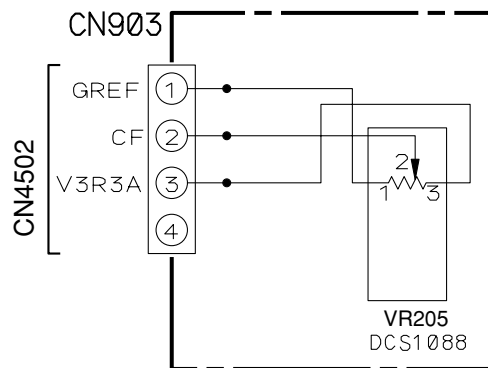
Note: Although the ref. numbers for the CH1/CH3/CH5 FADER Assys are different, they are identical, and their functions in the circuitry are the same. You can connect to either of them.

Note: Although the ref. numbers for the CH2/CH4/CH6 FADER Assys are different, they are identical, and their functions in the circuitry are the same. You can connect to either of them.

CH1/CH3/CH5 FADER ASSY



CH2/CH4/CH6 FADER ASSY



3. DISASSEMBLY

⚠ WARNING

Do not attempt to install this kit by your-self!

This kit requires professional expertise and must be installed by a specially trained technician.

For details, inquire at your nearest authorized Pioneer service center. (Consult your retail dealer for more information regarding authorized Pioneerservice centers.)

NOTE:

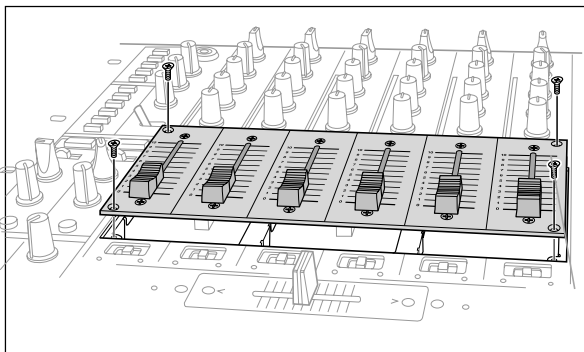
Installation of this kit requires specialized professional training and expertise. Consult your nearest authorized Pioneer service center for installation (installation fee must be paid by user). Attempting to install this kit by yourself can be very dangerous, and may result not only in damage to the unit, but fire or electrical shock. Pioneer can accept no liability for injuries or damages resulting from installations or modifications performed by the customer.

To the Installing Service Personnel

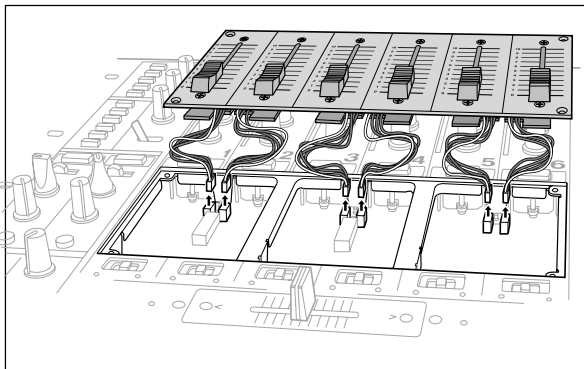
Install this panel unit as depicted in the accompanying illustrations and instructions.

- Before beginning work, be sure to disconnect the power cord from its supply outlet.

1. Remove the four screws at the corners of the fader panel, and remove the panel.

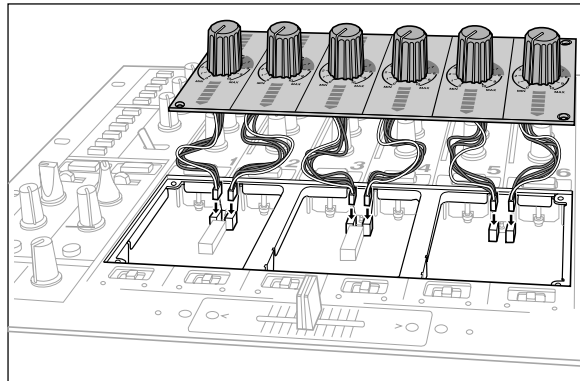


2. Disconnect the cable connectors (6).



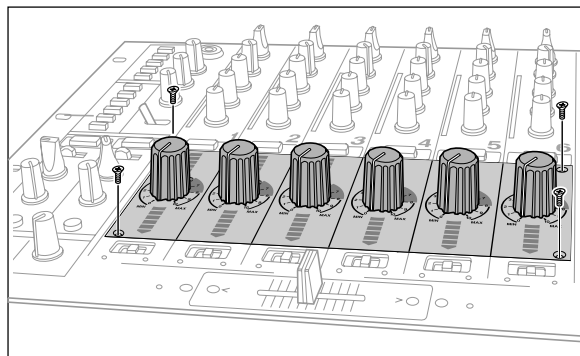
3. Connect the cable connectors of the faderunit (6).

- Insert the connectors securely, taking care to connect them in the proper order.



4. Place the fader panel in its proper location and fasten using the four corner screws.

- Take care not to pinch the wiring between the panel and other parts when replacing the fader panel.



- Store the removed fader panel in the packing box for this kit.