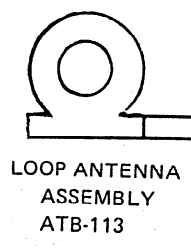


4. P. C. BOARDS CONNECTION DIAGRAM

TUNER ASSEMBLY (AWZ1154)

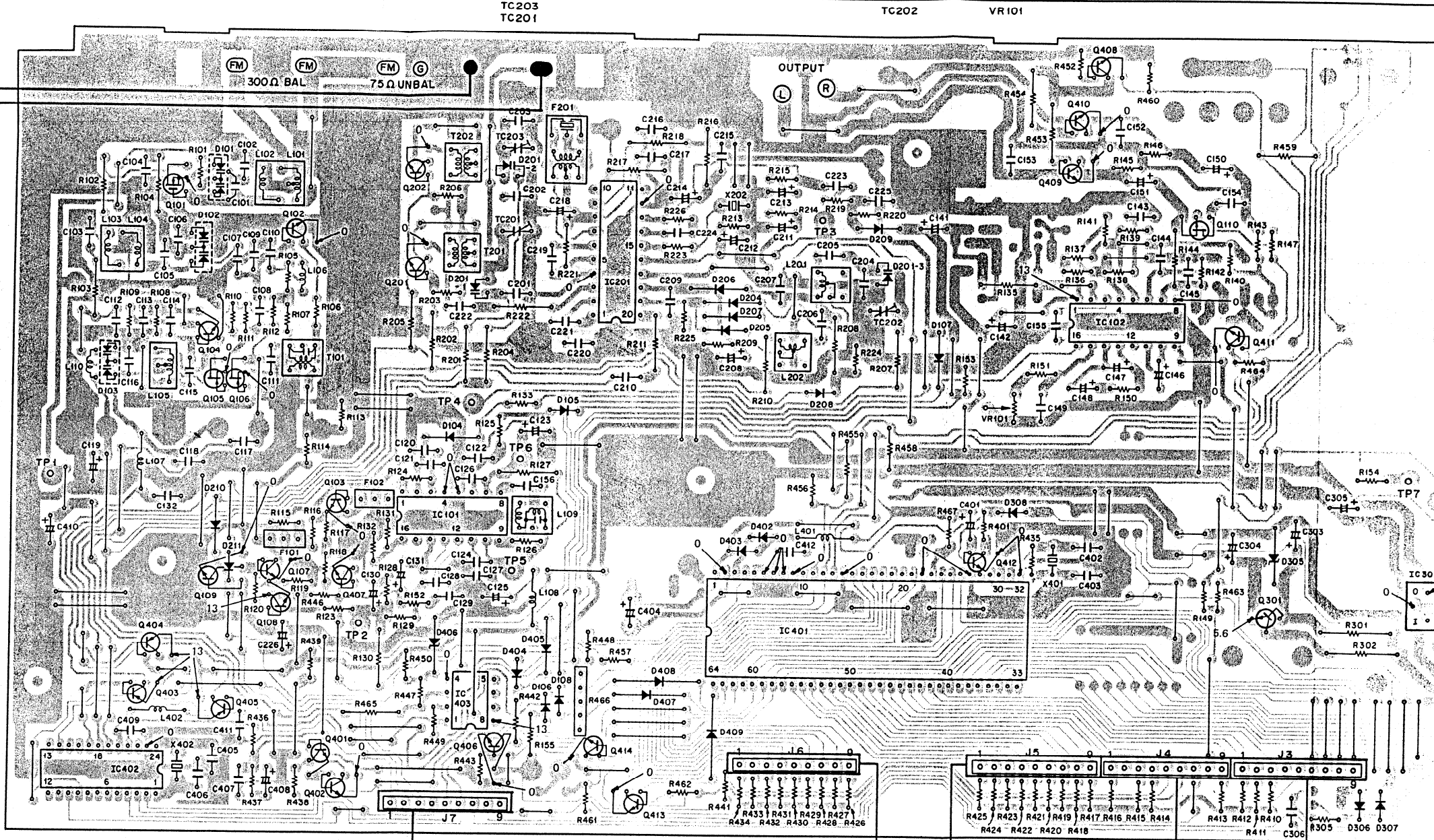
IC402 Q101 Q104 Q106 Q102 Q108 Q107 Q403 Q201 IC101 IC403 IC201 IC401 IC102 Q110 Q301 IC301
 Q404 Q403 Q109 Q405 Q402 Q401 Q202 Q202 Q406 Q414 Q413 Q412 Q409 Q410 Q408 Q411



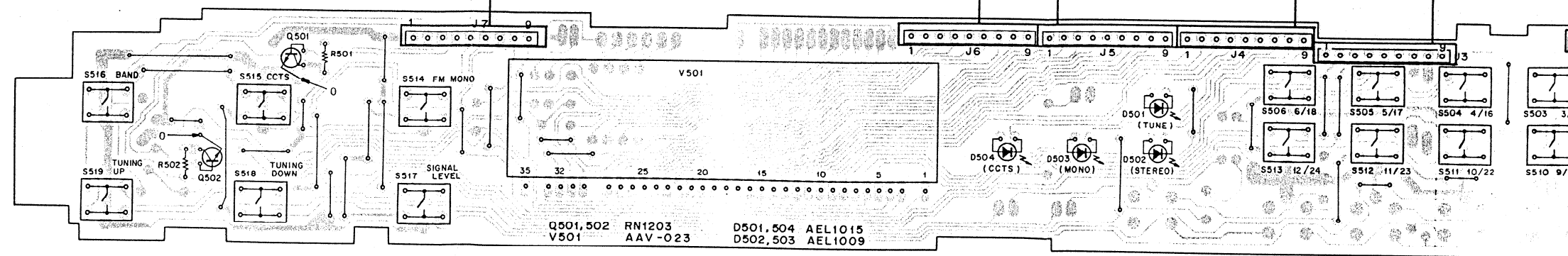
- IC101 PA3001
- IC102 AN7470P
- IC201 LA1247
- IC301 NJM78M13A
- IC401 PD5042
- IC402 LC7217
- IC403 M5223P

- Q101 2SK241
- Q102 2SC2786
- Q103,104 2SC2668
- Q105,106 2SK161
- Q107,108,406,409,410 2SC2458
- Q109,407,411-414 RN1203
- Q201,202 2SC2878
- Q301 2SD880
- Q401,402 2SC1740SLN
- Q403-405 RN2203
- Q408 2SA1048

- D101-103 1SV147
- D104-108,208-211, D306-308,402-405, D407-409 1SS131
- D201-1, D201-2, D201-3 KVO714
- D204-207 1SS85
- D301-304 S5566
- D305 RD6.2ESB3
- D406 RD2.4ESB2



DISPLAY ASSEMBLY



- Q501,502 RN1203
- V501 AAV-Q23
- D501,504 AEL1015
- D502,503 AEL1009

A

B

C

D

10

1

2

3

4

5

6

4

5

6

7

8

9

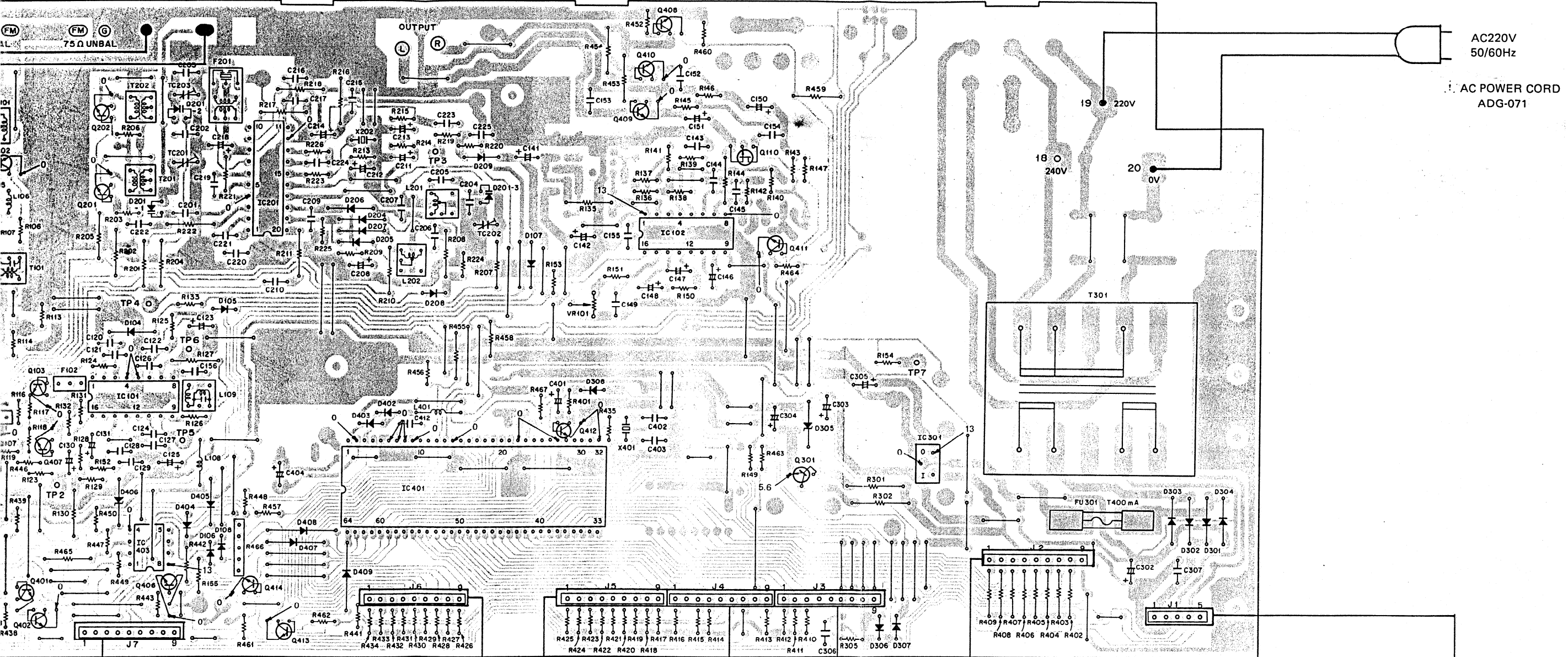
MBLY (AWZ1154)

Q2 Q107 Q103 Q201 IC101 IC403 IC201 IC401 IC102 Q110 Q301 IC301
 Q407 Q202
 Q402 Q401 Q406 Q414 Q413 Q412 Q409 Q410 Q408 Q411

TC203
TC201

TC202

VR101



DISPLAY ASSEMBLY

SWITCH ASSEMBLY

Q501,502 RN1203 D501,504 AEL1015
 V501 AAV-023 D502,503 AEL1009

4

5

6

7

8

9

A

B

C

D

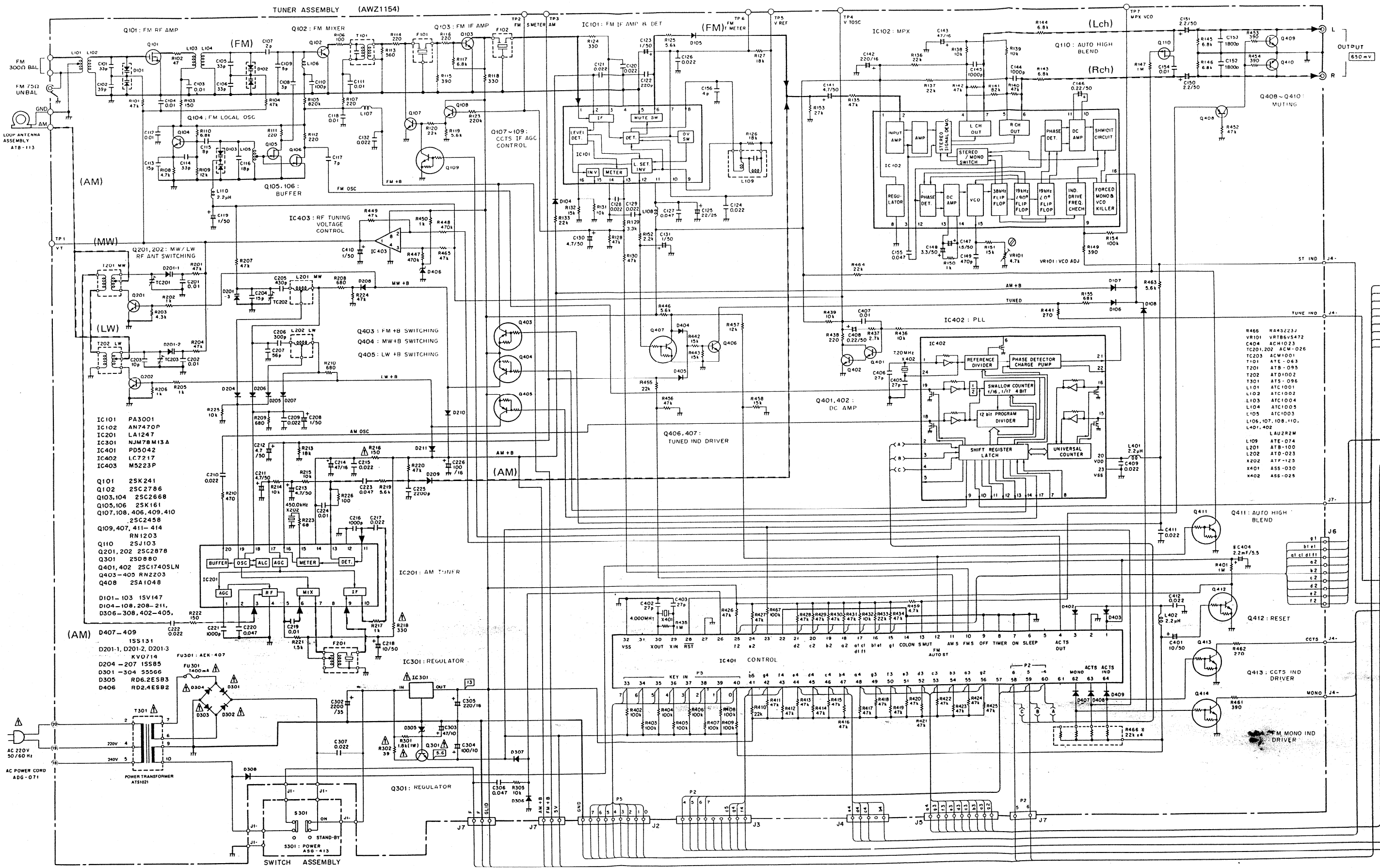
5. SCHEMATIC DIAGRAM

A

B

C

D



1

2

3

4

5

6

