

# Service Manual

**PIONEER®**  
The Art of Entertainment



ORDER NO.  
RRV1992

PORTABLE CD PLAYER

# PCD-001

# PCD-002

# PCD-003

# PCD-004

THIS MANUAL IS APPLICABLE TO THE FOLLOWING MODEL(S) AND TYPE(S).

Type	Model				Power Requirement	Remarks
	PCD-001	PCD-002	PCD-003	PCD-004		
KUCXTL	○	○	○	○	AC120V ADAPTOR or BATTERIES(Not included)(1.5VX2)	
ZBXTL	○	○	○	—	BATTERIES ( Two included)	
NVXTL	—	—	○	—	AC230V ADAPTOR or BATTERIES (Two included)	
NYXTL	—	—	○	—	AC230V ADAPTOR or BATTERIES (Two included)	

## CONTENTS

1. SAFETY INFORMATION .....	2	7. GENERAL INFORMATION .....	21
2. EXPLODED VIEWS AND PARTS LIST .....	4	7.1 PARTS IC .....	21
3. SCHEMATIC DIAGRAM .....	10	7.2 DIAGNOSIS .....	28
4. PCB CONNECTION DIAGRAM .....	16	7.2.1 DISASSEMBLY .....	28
5. PCB PARTS LIST .....	18	7.3 BLOCK DIAGRAM .....	29
6. ADJUSTMENT .....	19	8. PANEL FACILITIES AND SPECIFICATIONS .....	30

# 1. SAFETY INFORMATION

This service manual is intended for qualified service technicians; it is not meant for the casual do-it-yourselfer. Qualified technicians have the necessary test equipment and tools, and have been trained to properly and safely repair complex products such as those covered by this manual.

Improperly performed repairs can adversely affect the safety and reliability of the product and may void the warranty. If you are not qualified to perform the repair of this product properly and safely, you should not risk trying to do so and refer the repair to a qualified service technician.

## WARNING

This product contains lead in solder and certain electrical parts contain chemicals which are known to the state of California to cause cancer, birth defects or other reproductive harm.

Health & Safety Code Section 25249.6 – Proposition 65


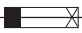
## NOTICE

(FOR CANADIAN MODEL ONLY)

Fuse symbols  (fast operating fuse) and/or  (slow operating fuse) on PCB indicate that replacement parts must be of identical designation.

## REMARQUE

(POUR MODÈLE CANADIEN SEULEMENT)

Les symboles de fusible  (fusible de type rapide) et/ou  (fusible de type lent) sur CCI indiquent que les pièces de remplacement doivent avoir la même désignation.

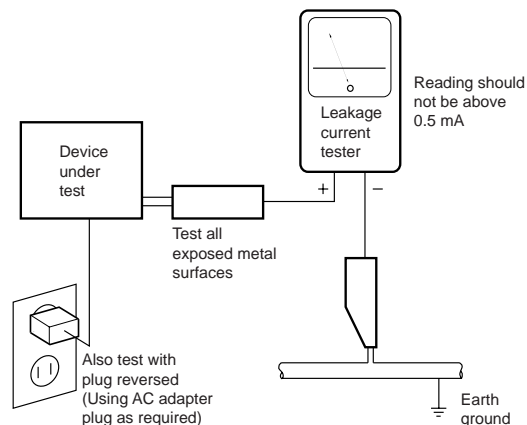
## (FOR USA MODEL ONLY)

### 1. SAFETY PRECAUTIONS

The following check should be performed for the continued protection of the customer and service technician.

#### LEAKAGE CURRENT CHECK

Measure leakage current to a known earth ground (water pipe, conduit, etc.) by connecting a leakage current tester such as Simpson Model 229-2 or equivalent between the earth ground and all exposed metal parts of the appliance (input/output terminals, screwheads, metal overlays, control shaft, etc.). Plug the AC line cord of the appliance directly into a 120V AC 60 Hz outlet and turn the AC power switch on. Any current measured must not exceed 0.5 mA.



AC Leakage Test

**ANY MEASUREMENTS NOT WITHIN THE LIMITS OUTLINED ABOVE ARE INDICATIVE OF A POTENTIAL SHOCK HAZARD AND MUST BE CORRECTED BEFORE RETURNING THE APPLIANCE TO THE CUSTOMER.**

### 2. PRODUCT SAFETY NOTICE

Many electrical and mechanical parts in the appliance have special safety related characteristics. These are often not evident from visual inspection nor the protection afforded by them necessarily can be obtained by using replacement components rated for voltage, wattage, etc. Replacement parts which have these special safety characteristics are identified in this Service Manual.

Electrical components having such features are identified by marking with a  $\Delta$  on the schematics and on the parts list in this Service Manual.

The use of a substitute replacement component which does not have the same safety characteristics as the PIONEER recommended replacement one, shown in the parts list in this Service Manual, may create shock, fire, or other hazards.

Product Safety is continuously under review and new instructions are issued from time to time. For the latest information, always consult the current PIONEER Service Manual. A subscription to, or additional copies of, PIONEER Service Manual may be obtained at a nominal charge from PIONEER.

## 1.2 SAFETY INFORMATION

**IMPORTANT**  
THIS PIONNER APPARATUS CONTAINS LASER OF CLASS 1.  
SERVICING OPERATION OF THE APPARATUS SHOULD BE DONE BY A SPECIALLY INSTRUCTED PERSON.

LASER DIODE CHARACTERISTICS  
MAXIMUM OUTPUT POWER : 5 mw  
WAVELENGTH : 780-785 nm

1. L'écoute prolongée au casque et au niveau maximum peut sérieusement endommager votre ouïe.  
Lorsque vous écoutez de la musique au casque, réglez le niveau entre 4 et 6.  
2. Veuillez à n'utiliser que le casque fourni (PZP1007). L'utilisation d'un casque autre que celui-ci et l'écoute prolongée au casque peut sérieusement endommager votre ouïe.

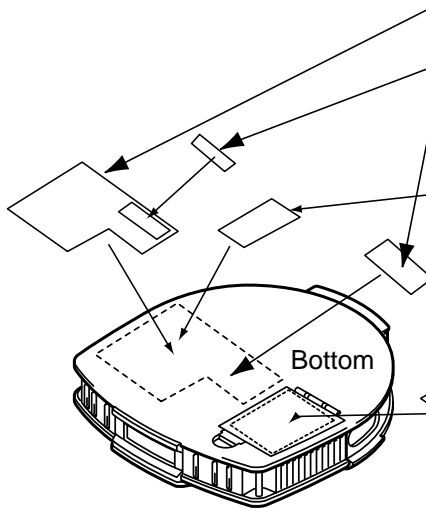
This Class B digital apparatus meets all requirements of the Canadian Interference-Causing Equipment Regulations.  
  
Cet appareil numérique de la Classe B respecte toutes les exigences du Règlement sur le matériel brouilleur du Canada.

H. P. SOUND LABEL  
NYXTL type Only

THIS DEVICE COMPLIES WITH PART 15 OF THE FCC RULES. OPERATION IS SUBJECT TO THE FOLLOWING TWO CONDITIONS: (1) THIS DEVICE MAY NOT CAUSE HARMFUL INTERFERENCE, AND (2) THIS DEVICE MUST ACCEPT ANY INTERFERENCE RECEIVED, INCLUDING INTERFERENCE THAT MAY CAUSE UNDESIRE OPERATION.

COMPLIES WITH FDA RADIATION PERFORMANCE STANDARDS, 21 CFR SUBCHAPTER J. MANUFACTURED ADT

### LABEL CHECK



FDA LABEL KUCXTL type Only    FCC/FDA/DOC LABEL KUCXTL type Only

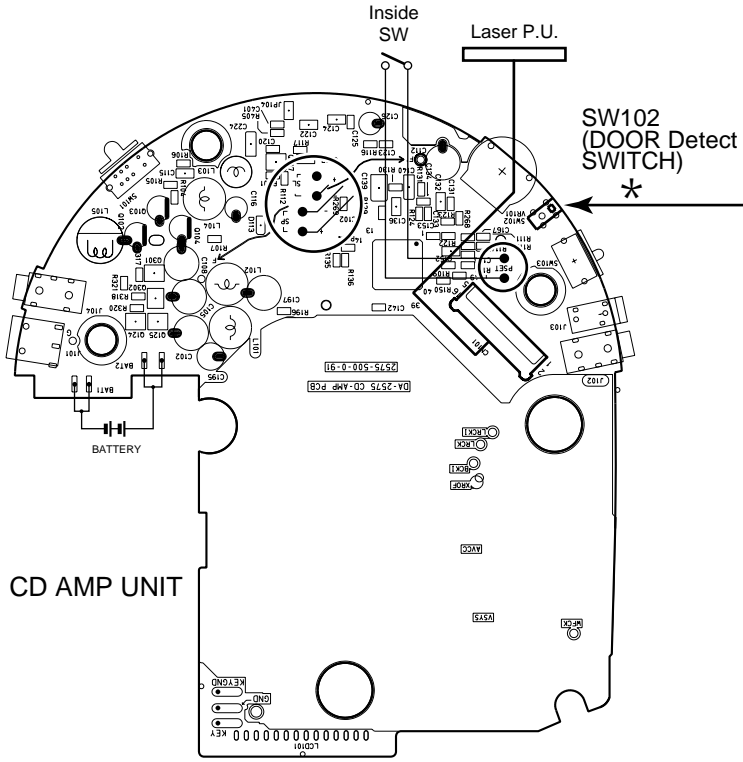


WARNING LABEL  
NYXTL and NVXTL types

**CAUTION:** TO AVOID DANGER OF BATTERY RUPTURE AND LEAKAGE BE SURE TO INSERT BATTERIES FACING THE RIGHT DIRECTION SO THEIR POLARITY (+AND-) IS CORRECT. REPLACE ALL BATTERIES AT ONCE. DO NOT MIX OLD AND NEW BATTERIES OR DIFFERENT BRANDS OF BATTERIES.

**ATTENTION:** POUR ÉVITER QUE LES PILES NE SOIENT ENDOMMAGÉES ET NE FUIENT VEILLEZ À INTRODUIRE LES PILES DE TELLE MANIÈRE QUE LES POLARITÉS (+ET-) SOIENT RESPECTÉES. REMPLACEZ TOUTES LES PILES EN MÊME TEMPS. N'UTILISEZ PAS TOUT À LA FOIS UNE PILE NEUVE ET UNE PILE USAGÉE, OU DES PILES DE MARQUE DIFFÉRENTE.

BT CAUTION LABEL



**Additional Laser Caution**

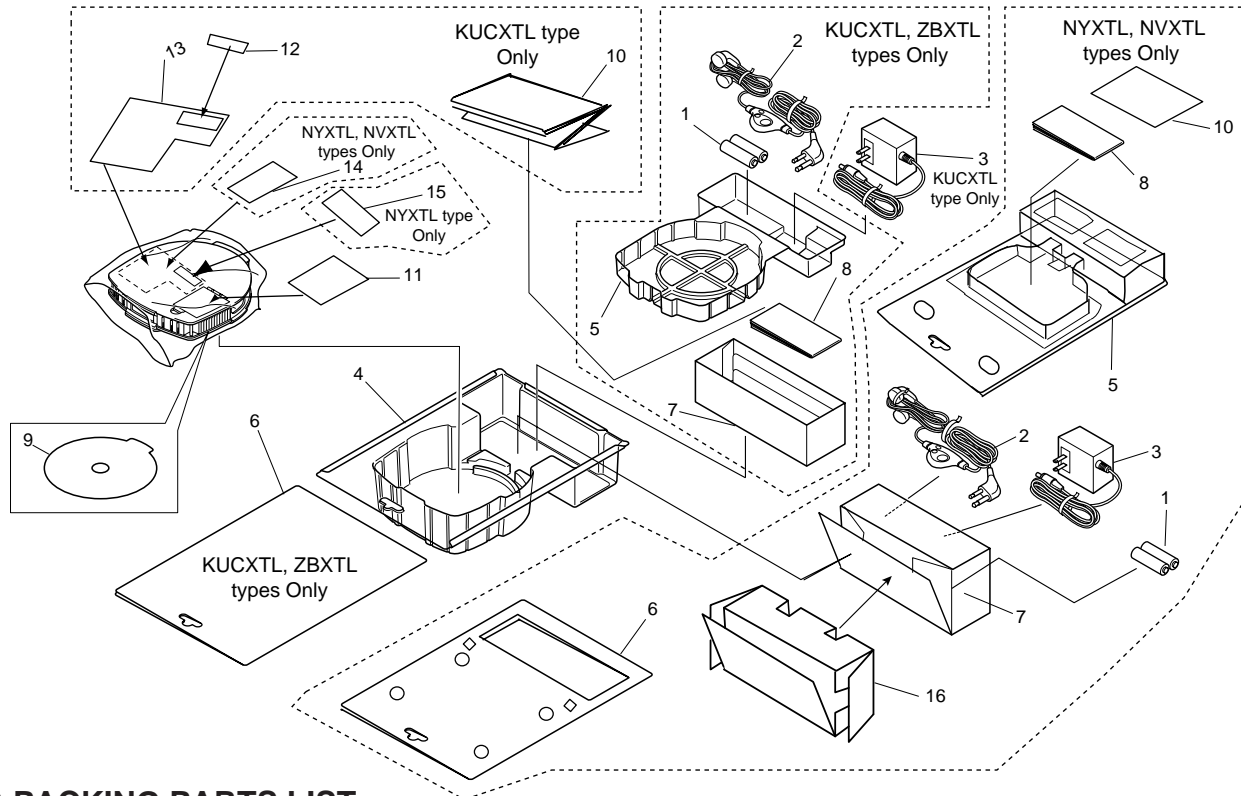
- Laser Interlock Mechanism**  
The position of the switch (SW102) for detecting the loading state is detected by the system microprocessor, and the design prevents laser diode oscillation except when both switch (SW102) is not on CLMP terminal side (CLMP signal is OFF or high level.). Thus, interlock will no longer function if switch (SW102) is deliberately shorted (low level). The interlock also does not function in the test mode\*.
- Laser diode oscillation will continue, if pin 36 of CXA1992A (IC102) on the CD AMP UNIT is connected to GND, or else the terminals of Q107 are shorted to each other (fault condition).

\* Refer to page 19.

## 2. EXPLODED VIEWS AND PARTS LIST

- NOTES :
- Parts marked by “NSP” are generally unavailable because they are not in our Master Spare Parts List.
  - The  $\triangle$  mark found on some component parts indicates the importance of the safety factor of the part. Therefore, when replacing, be sure to use parts of identical designation.
  - Screw adjacent to  $\nabla$  mark on the product are used for disassembly.

### 2.1 PACKING



### (1) PACKING PARTS LIST

Mark No.	Description	Part No.	Mark No.	Description	Part No.
NSP 1	Battery	See Contrast table(2)	NSP 9	Information Sheet	See Contrast table(2)
2	Innerphone with remote	PZP1007	NSP 10	Guarantee Card	See Contrast table(2)
3	AC Adapter	See Contrast table(2)	11	BT CAUTION LABEL	2575855000
4	Blister Package	See Contrast table(2)	12	FDA LABEL	See Contrast table(2)
5	Blister Package C	See Contrast table(2)	13	FCC / FDA / DOC LABEL	See Contrast table(2)
6	Package board	See Contrast table(2)	14	WARNING LABEL	See Contrast table(2)
7	Package Box	See Contrast table(2)	15	H.P. SOUND LABEL	See Contrast table(2)
8	Operating Instructions	See Contrast table(2)	16	Spacer	See Contrast table(2)

### (2) CONTRAST TABLE

#### ■ for PCD-001 and PCD-002


PCD-001/KUCXTL, ZBXTL, PCD-002/KUCXTL and ZBXTL are constructed the same except for the following:

Mark	No.	Symbol and Description	Part No.				Remarks
			PCD-001		PCD-002		
			KUCXTL	ZBXTL	KUCXTL	ZBXTL	
NSP	1	Battery (LR6, AA)	Not used	AEX1007	Not used	AEX1007	
$\triangle$	3	AC Adapter	002753800113	Not used	002753800113	Not used	
	4	Blister Package	2575902001	2575902001	2575902001	2575902001	
	5	Blister Package C	2575904001	2575904001	2575904001	2575904001	
	6	Package Board	2575906004	2575906008	2575906004	2575906008	
	7	Package Box	2575916004	2575916007	2575916004	2575920107	

Mark	No.	Symbol and Description	Part No.				Remarks
			PCD-001		PCD-002		
			KUCXTL	ZBXTL	KUCXTL	ZBXTL	
NSP	8	Operating Instructions (English/ French)	2975920104	Not used	2975920104	Not used	
	8	Operating Instructions (English/ Chinese)	Not used	2575920106	Not used	2575920106	
	9	Information Sheet	2575851015	2575851026	2575851036	2575851027	
	10	Guarantee Card	2575925001	Not used	2575925001	Not used	
NSP	12	FDA Label	2519859000	Not used	2519859000	Not used	
NSP	13	FCC / FDA / DOC Label	2575960000	Not used	2575960000	Not used	
16	Spacer	Not used	Not used	Not used	Not used		

### ■ for PCD-003

PCD-003/KUCXTL, NVXTL, NYXTL and ZBXTL are constructed the same except for the following:

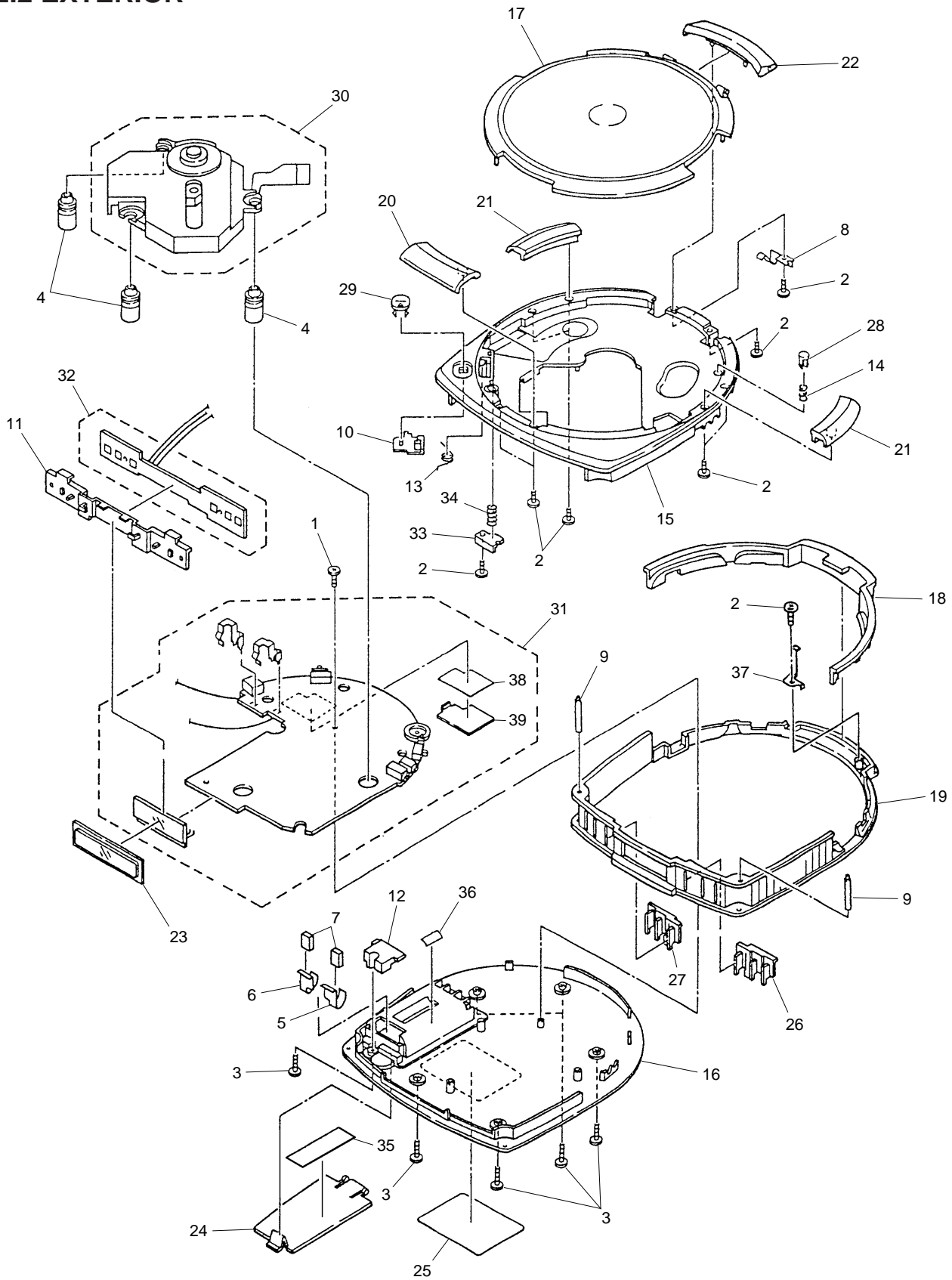
Mark	No.	Symbol and Description	Part No.				Remarks	
			PCD-003					
			KUCXTL	NVXTL	NYXTL	ZBXTL		
NSP	1	Battery (LR6, AA)	Not used	Not used	Not used	AEX1007		
	1	Battery (KR, AA)	Not used	008620700303	008620700303	Not used		
		3	AC Adapter	002753800113	002754000113	002753900113		Not used
	4	Blister Package	2575902001	Not used	Not used	2575902001		
	4	Blister Front	Not used	2575940000	2575940000	Not used		
	5	Blister Package C	2575904001	Not used	Not used	2575904001		
	5	Blister Rear	Not used	2575941000	2575941000	Not used		
	6	Package Board	2575906005	Not used	Not used	2575906008		
	6	Package Board B	Not used	2575905001	2575905001	Not used		
	7	Package Box	2575916005	Not used	Not used	2575916007		
	7	Package Box B	Not used	2575917001	2575917001	Not used		
	8	Operating Instructions (English/ French)	2575920104	Not used	Not used	Not used		
	8	Operating Instructions (English/ French/ German/ Italian/ Dutch/ Swedish/ Spanish/ Portuguese)	Not used	2575920105	2575920105	Not used		
	8	Operating Instructions (English/ Chinese)	Not used	Not used	Not used	2575920106		
	9	Information Sheet	2575851037	2575851018	2575851018	2575851028		
NSP	10	Guarantee Card	2575925001	2575925002	2575925002	Not used		
NSP	12	FDA Label	2519859000	Not used	Not used	Not used		
NSP	13	FCC / FDA / DOC Label	2575960000	Not used	Not used	Not used		
14	WARNING Label	Not used	2575225000	2575225000	Not used			
15	H.P. SOUND Label	Not used	Not used	2575849000	Not used			
16	Spacer C	Not used	Not used	2575932000	Not used			
16	Spacer D	Not used	2575933000	Not used	Not used			

### ■ for PCD-004

PCD-001/KUCXTL and PCD-004/KUCXTL are constructed the same except for the following:

Mark	No.	Symbol and Description	Part No.		Remarks
			PCD-001/KUCXTL	PCD-004/KUCXTL	
	9	Information Sheet	2575851015	2575851038	

## 2.2 EXTERIOR



**(1) EXTRIOR PARTS LIST**

Mark No.	Description	Part No.	Mark No.	Description	Part No.
1	Screw	0974354408	21	Ring Ornament	See Contrast table(2)
2	Screw	0977020053	22	Hinge Cover	See Contrast table(2)
3	Screw	0977020103	23	LCD Window	2575815002
4	Rubber Cushion	2528300000	24	Battery Cover	See Contrast table(2)
5	Battery Terminal A1	2569184100	25	Rear Label	See Contrast table(2)
6	Battery Terminal A2	2569185100	26	Tact Knob R	See Contrast table(2)
7	Cushion 2	2569868000	27	Tact Knob L	See Contrast table(2)
8	Plate Spring	2575180000	28	Detection Knob	See Contrast table(2)
9	Shaft	2575201000	29	Open Knob	See Contrast table(2)
10	Lock Lever	2575270000	30	CD MECHA UNIT	2597050000
11	LCD Holder	2575271000	31	CD AMP UNIT	See Contrast table(2)
12	Terminal Holder	2575272000	32	CD SW UNIT	2575005000
13	Open Spring	2575401000	33	Plate Up	See Contrast table(2)
14	Com Spring	2575402000	34	Com Spring Up	2575403000
15	Case	See Contrast table(2)	35	BT Caution Label	2575855000
16	Case B	See Contrast table(2)	NSP 36	Double Face	2570880000
17	CD Door	See Contrast table(2)	37	Hold Plate	2575181000
18	Ring U	See Contrast table(2)	38	Insulation Sheet 2	2569886000
19	Ring B	See Contrast table(2)	39	Heat Sink	2569133000
20	Ring Front	See Contrast table(2)			

**(2) CONTRAST TABLE**

**■ for PCD-001 and PCD-002**

PCD-001/KUCXTL, ZBXTL, PCD-002/KUCXTL and ZBXTL are constructed the same except for the following:

Mark	No.	Symbol and Description	Part No.				Remarks
			PCD-001		PCD-002		
			KUCXTL	ZBXTL	KUCXTL	ZBXTL	
	15	Case	2575801001	2575801001	2575801002	2575801002	
	16	Case B	2575803001	2575803001	2575803002	2575803002	
	17	CD Door	2575805007	2575805007	2575805002	2575805002	
	18	Ring U	2575807001	2575807001	2575807002	2575807002	
	19	Ring B	2575808001	2575808001	2575808002	2575808002	
	20	Ring Front	2575811001	2575811001	2575811002	2575811002	
	21	Ring Ornament	2575812001	2575812001	2575812002	2575812002	
	22	Hinge Cover	2575813001	2575813001	2575813002	2575813002	
	24	Battery Cover	2575816001	2575816001	2575816002	2575816002	
	25	Rear Label	2575850014	2575850025	2575850035	2575850026	
	26	Tact Knob R	2575860001	2575860001	2575860002	2575860002	
	27	Tact Knob L	2575861001	2575861001	2575861002	2575861002	
	28	Detection Knob	2575865001	2575865001	2575865008	2575865008	
	29	Open Knob	2575866001	2575866001	2575866002	2575866002	
	31	CD AMP UNIT	2575002000	2575004000	2575002000	2575004000	
	33	Plate up	2575273001	2575273001	2575273008	2575273008	



# PCD-001,PCD-002,PCD-003,PCD-004

## ■ for PCD-003

PCD-003/KUCXTL, NVXTL, NYXTL and ZBXTL are constructed the same except for the following:

Mark	No.	Symbol and Description	Part No.				Remarks
			PCD-003				
			KUCXTL	NVXTL	NYXTL	ZBXTL	
	15	Case	2575801003	2575801003	2575801003	2575801003	
	16	Case B	2575803003	2575803003	2575803003	2575803003	
	17	CD Door	2575805003	2575805003	2575805003	2575805003	
	18	Ring U	2575807003	2575807003	2575807003	2575807003	
	19	Ring B	2575808003	2575808003	2575808003	2575808003	
	20	Ring Front	2575811003	2575811003	2575811003	2575811003	
	21	Ring Ornament	2575812003	2575812003	2575812003	2575812003	
	22	Hinge Cover	2575813003	2575813003	2575813003	2575813003	
	24	Battery Cover	2575816003	2575816003	2575816003	2575816003	
	25	Rear Label	2575850036	2575850021	2575850017	2575850027	
	26	Tact Knob R	2575860003	2575860003	2575860003	2575860003	
	27	Tact Knob L	2575861003	2575861003	2575861003	2575861003	
	28	Detection Knob	2575865002	2575865002	2575865002	2575865002	
	29	Open Knob	2575866003	2575866003	2575866003	2575866003	
	31	CD AMP UNIT	2575002000	2575004000	2575003000	2575004000	
	33	Plate Up	2575273002	2575273002	2575273002	2575273002	

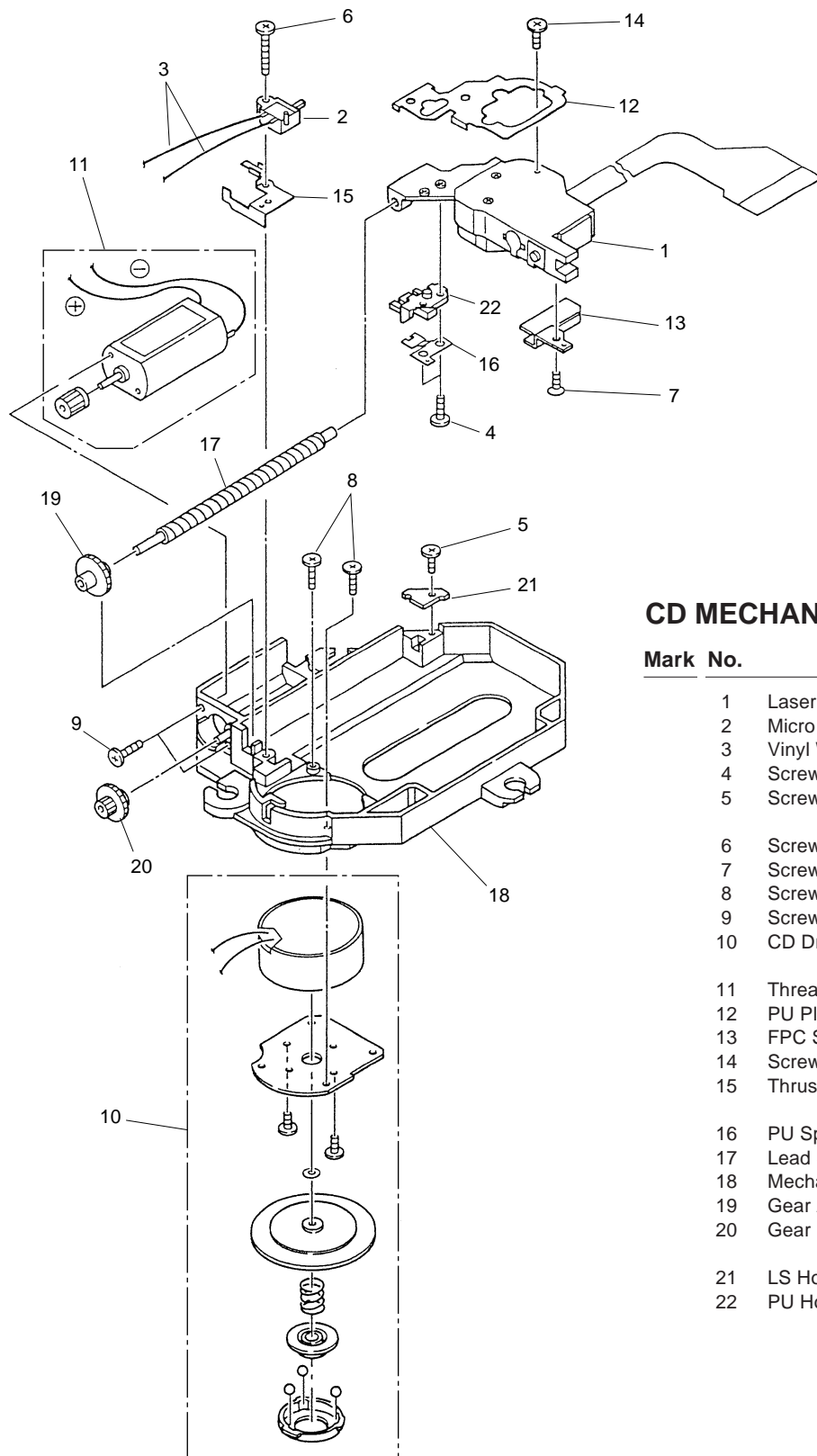
## ■ for PCD-004

PCD-001/KUCXTL and PCD-004/KUCXTL are constructed the same except for the following:

Mark	No.	Symbol and Description	Part No.		Remarks
			PCD-001/KUCXTL	PCD-004/KUCXTL	
	15	Case	2575801001	2575801004	
	16	Case B	2575803001	2575803004	
	17	CD Door	2575805007	2575805004	
	18	Ring U	2575807001	2575807004	
	19	Ring B	2575808001	2575808004	
	20	Ring Front	2575811001	2575811004	
	21	Ring Ornament	2575812001	2575812004	
	22	Hinge Cover	2575813001	2575813004	
	24	Battery Cover	2575816001	2575816004	
	25	Rear Label	2575850014	2575850037	
	26	Tact Knob R	2575860001	2575860004	
	27	Tact Knob L	2575861001	2575861004	
	28	Detection Knob	2575865001	2575865009	
	29	Open Knob	2575866001	2575866004	
	31	CD AMP UNIT	2575002000	2575002000	
	33	Plate Up	2575273001	2575273009	



### 2.3 CD MECHANISM UNIT SECTION



#### CD MECHANISM UNIT PARTS LIST

Mark No.	Description	Part No.
1	Laser P.U, SPU3090	002001500001
2	Micro SW	0036819000
3	Vinyl Wire	0968606110
4	Screw	0974354405
5	Screw	0974354508
6	Screw	0974354708
7	Screw	0974665404
8	Screw	0974754403
9	Screw	0974755403
10	CD Drive Motor	2595604100
11	Thread Motor	2597601100
12	PU Plate	2597120000
13	FPC Supporter	2597130000
14	Screw (2X1.85)	2597140000
15	Thrust Spring	2597181100
16	PU Spring	2597182000
17	Lead Screw	2597201000
18	Mecha Chassis	2597250000
19	Gear A	2597256000
20	Gear B	2597257000
21	LS Holder	2597258000
22	PU Holder	2597266000

# 3. SCHEMATIC DIAGRAM

Note: When ordering service parts, be sure to refer to "EXPLODED VIEWS AND PARTS LIST" or "PCB PARTS LIST".

A

# A-a

## A CD AMP UNIT (2575002000)

▲ : TRACKING SERVE ROOP SIGNAL  
 ◆ : FOCUS SERVE ROOP SIGNAL  
 ⇨ : RF SIGNAL ROUTE

To CD MECHA UNIT

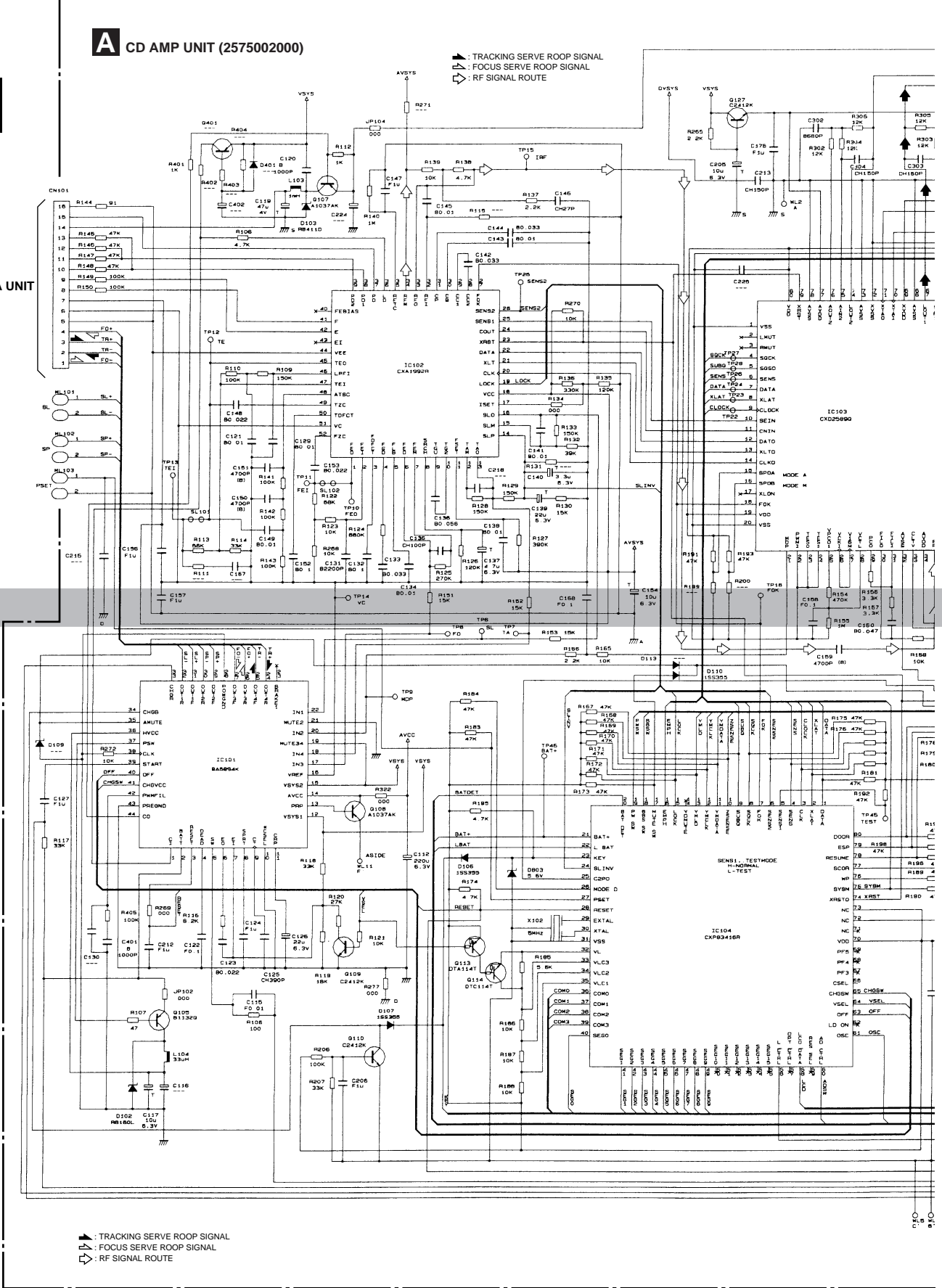
B

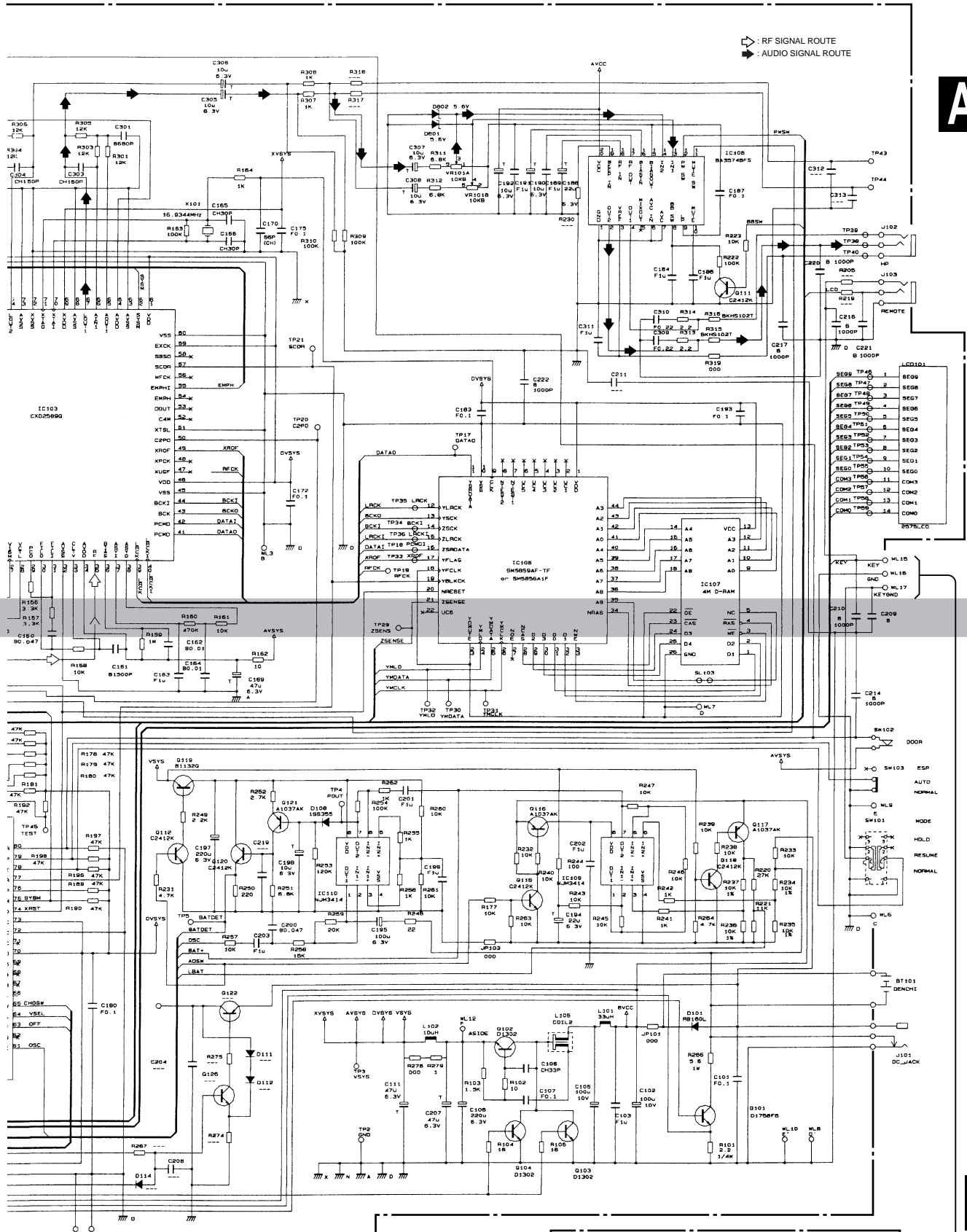
C

D

# A-b

▲ : TRACKING SERVE ROOP SIGNAL  
 ◆ : FOCUS SERVE ROOP SIGNAL  
 ⇨ : RF SIGNAL ROUTE

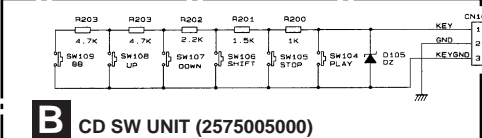




A-C

A-d

- CD SW UNIT  
 SW104: P/II  
 SW105: ■  
 SW106: PLAY MODE  
 SW107: ◀▶  
 SW108: ▶▶  
 SW109: P. BASS/PGM/DISP



B

A

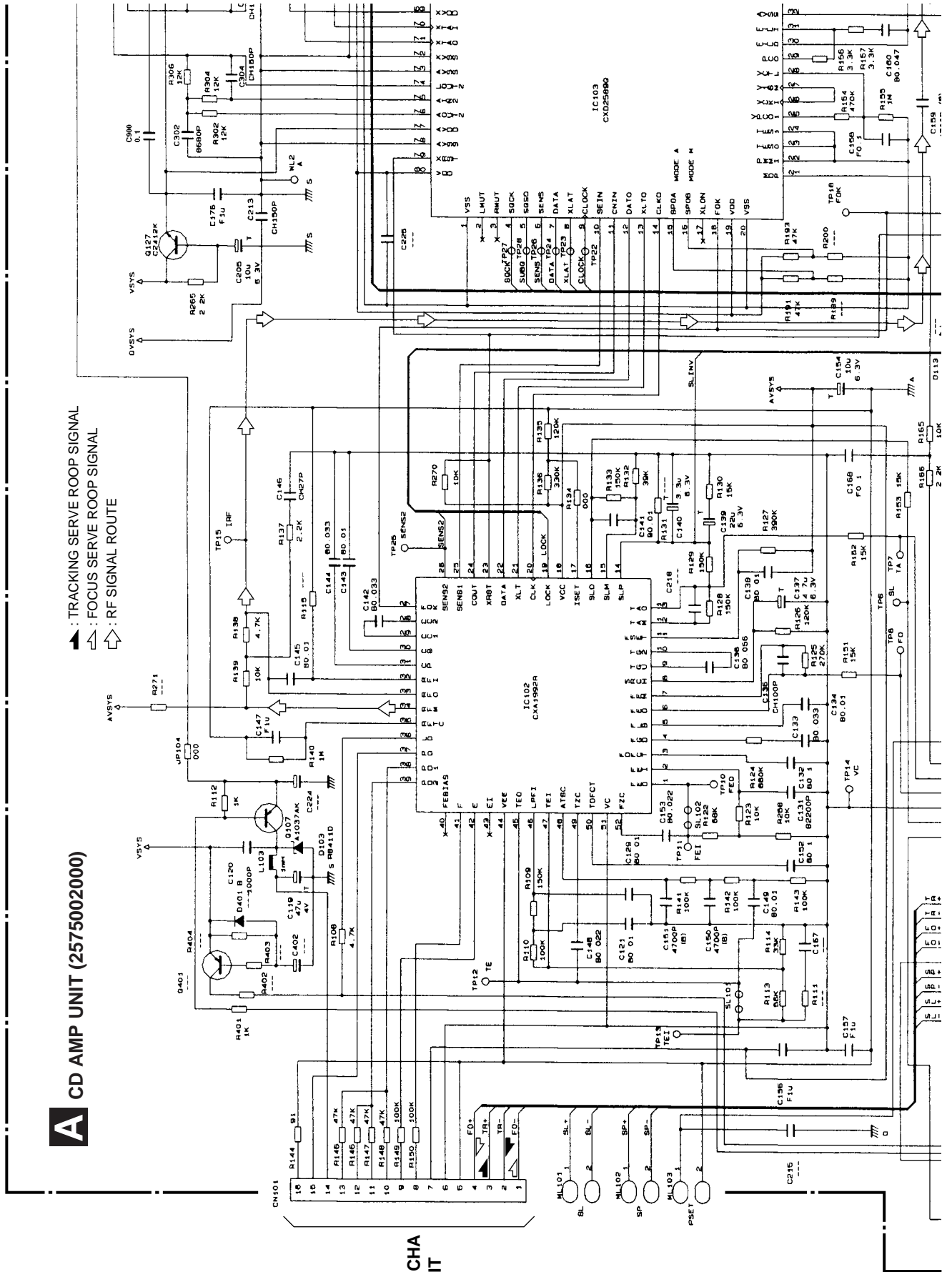
B

C

D

CD AMP UNIT (1/2)

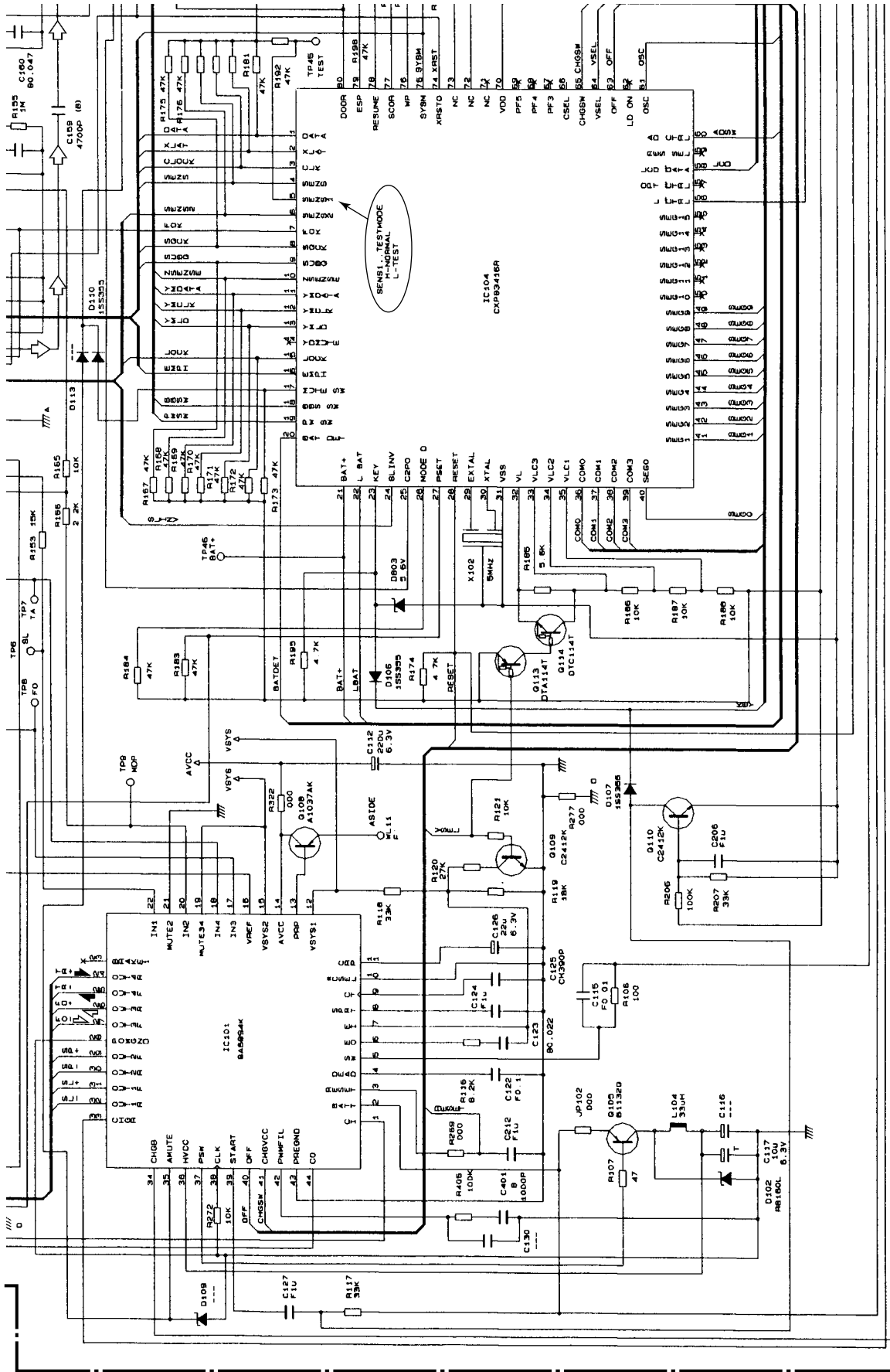
SCHEMATIC DIAGRAM POSITION:



A CD AMP UNIT (2575002000)

- ▶ : TRACKING SERVO ROOP SIGNAL
- ◀ : FOCUS SERVO ROOP SIGNAL
- ⇄ : RF SIGNAL ROUTE

To CD MECHA UNIT



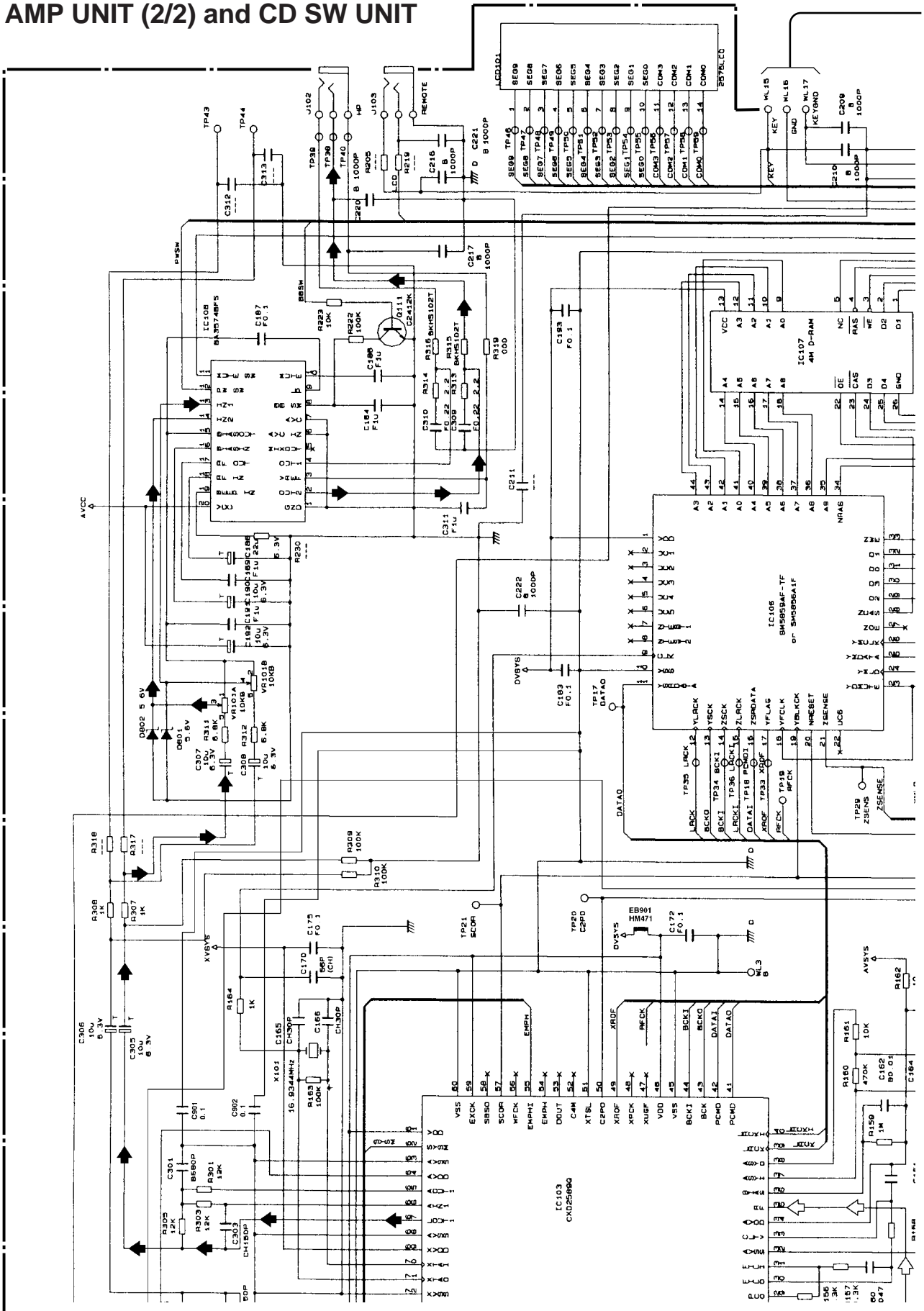
- ▲ : TRACKING SERVO ROOP SIGNAL
- ◀ : FOCUS SERVO ROOP SIGNAL
- ⇨ : RF SIGNAL ROUTE



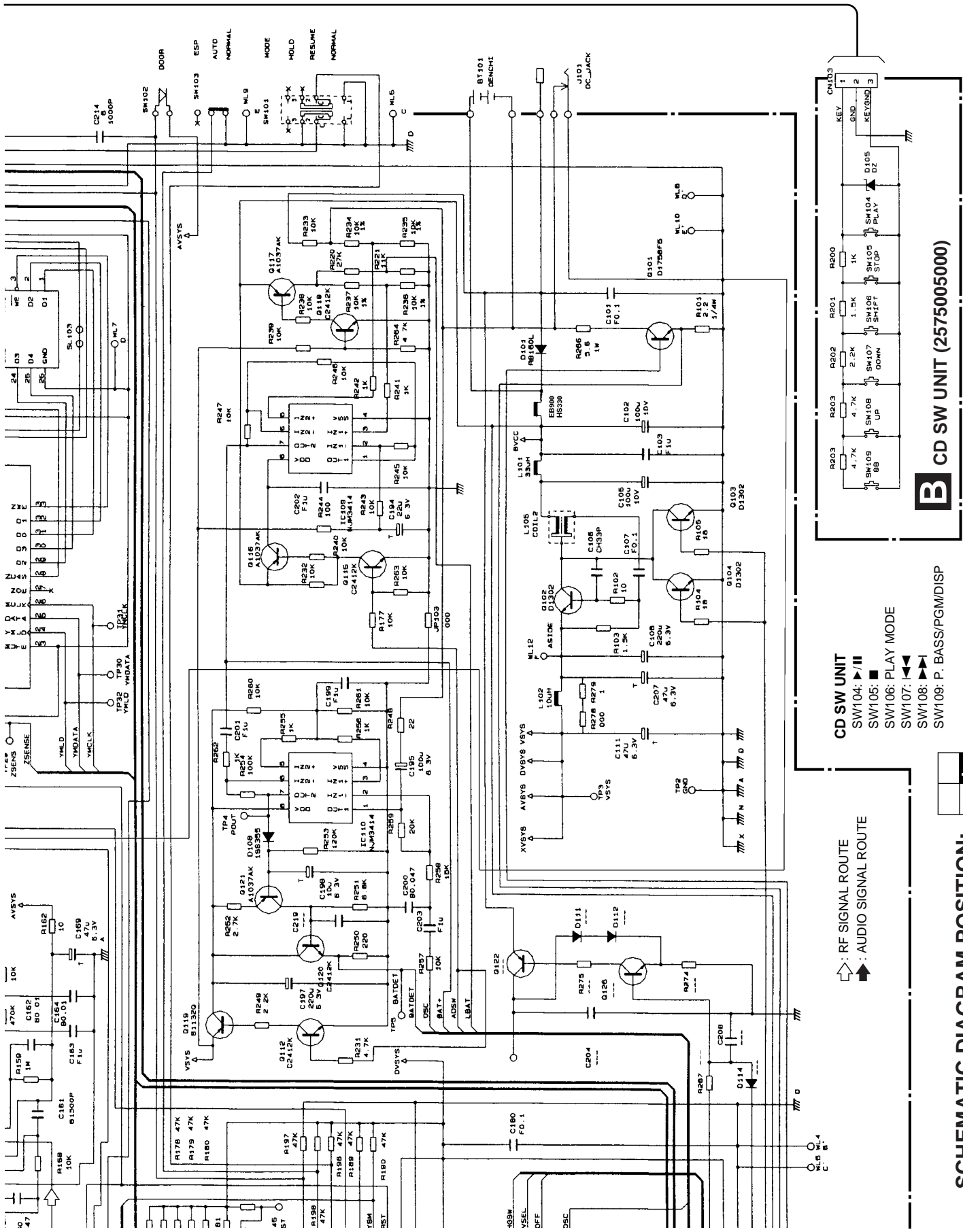
SCHEMATIC DIAGRAM POSITION: Ab

CD AMP UNIT (2/2) and CD SW UNIT

SCHEMATIC DIAGRAM POSITION:







**CD SW UNIT**  
 SW104: ▶/⏪  
 SW105: ■  
 SW106: PLAY MODE  
 SW107: ◀/⏩  
 SW108: ▶/⏩  
 SW109: P. BASS/PGM/DISP

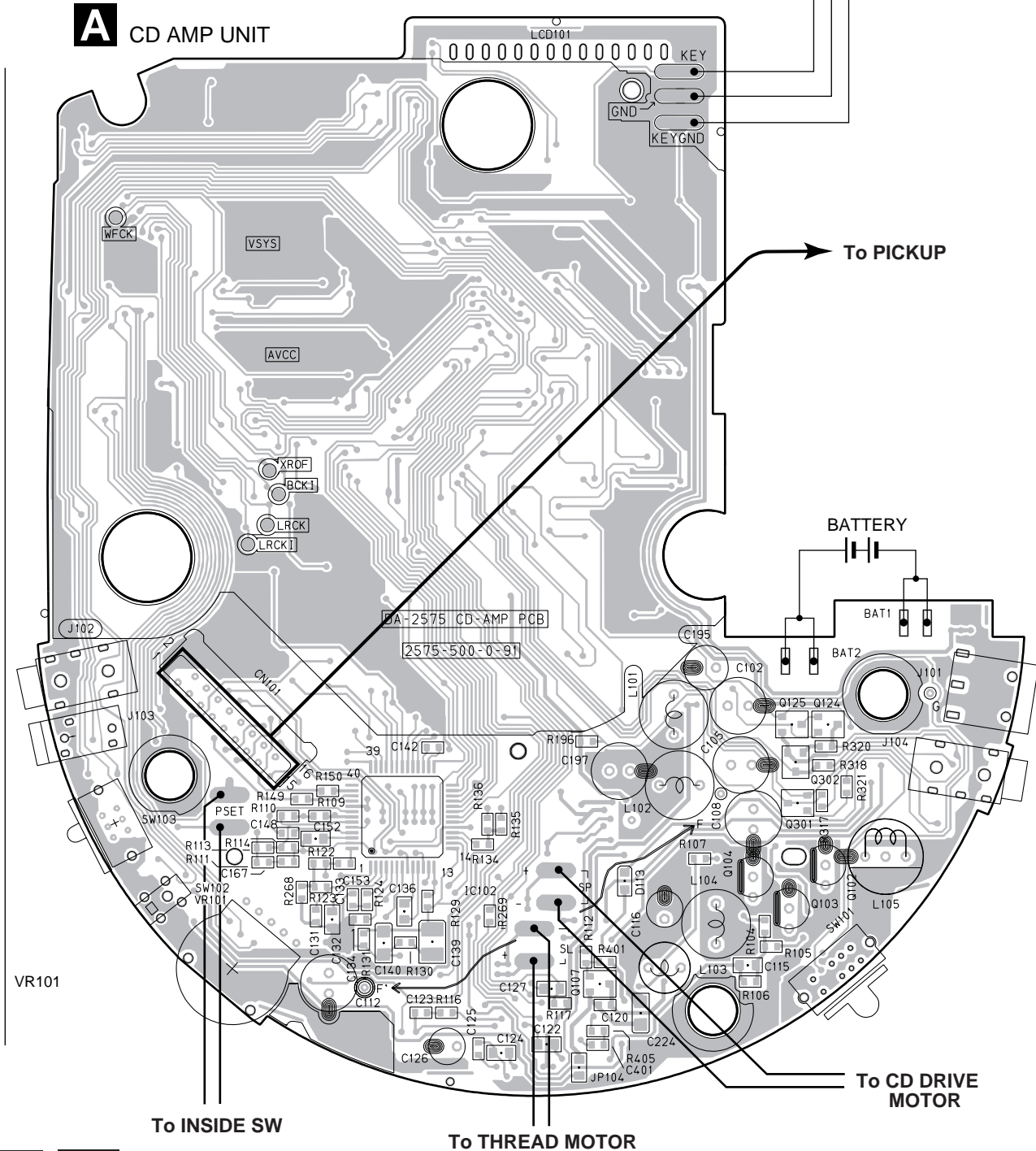
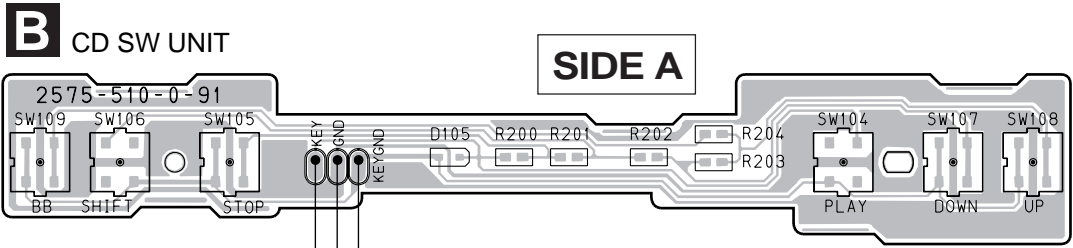
◻ : RF SIGNAL ROUTE  
 ◻ : AUDIO SIGNAL ROUTE

**SCHEMATIC DIAGRAM POSITION:**

**A-d B**



# 4. PCB CONNECTION DIAGRAM



**NOTE FOR PCB DIAGRAMS:**

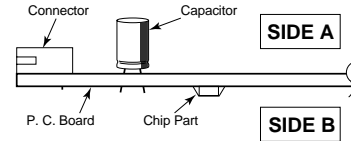
1. Part numbers in PCB diagrams match those in the schematic diagrams.
2. A comparison between the main parts of PCB and schematic diagrams is shown below.

Symbol in PCB Diagrams	Symbol in Schematic Diagrams	Part Name
		Transistor
		Transistor with resistor
		Field effect transistor

Symbol in PCB Diagrams	Symbol in Schematic Diagrams	Part Name
		Resistor array
		3-terminal regulator

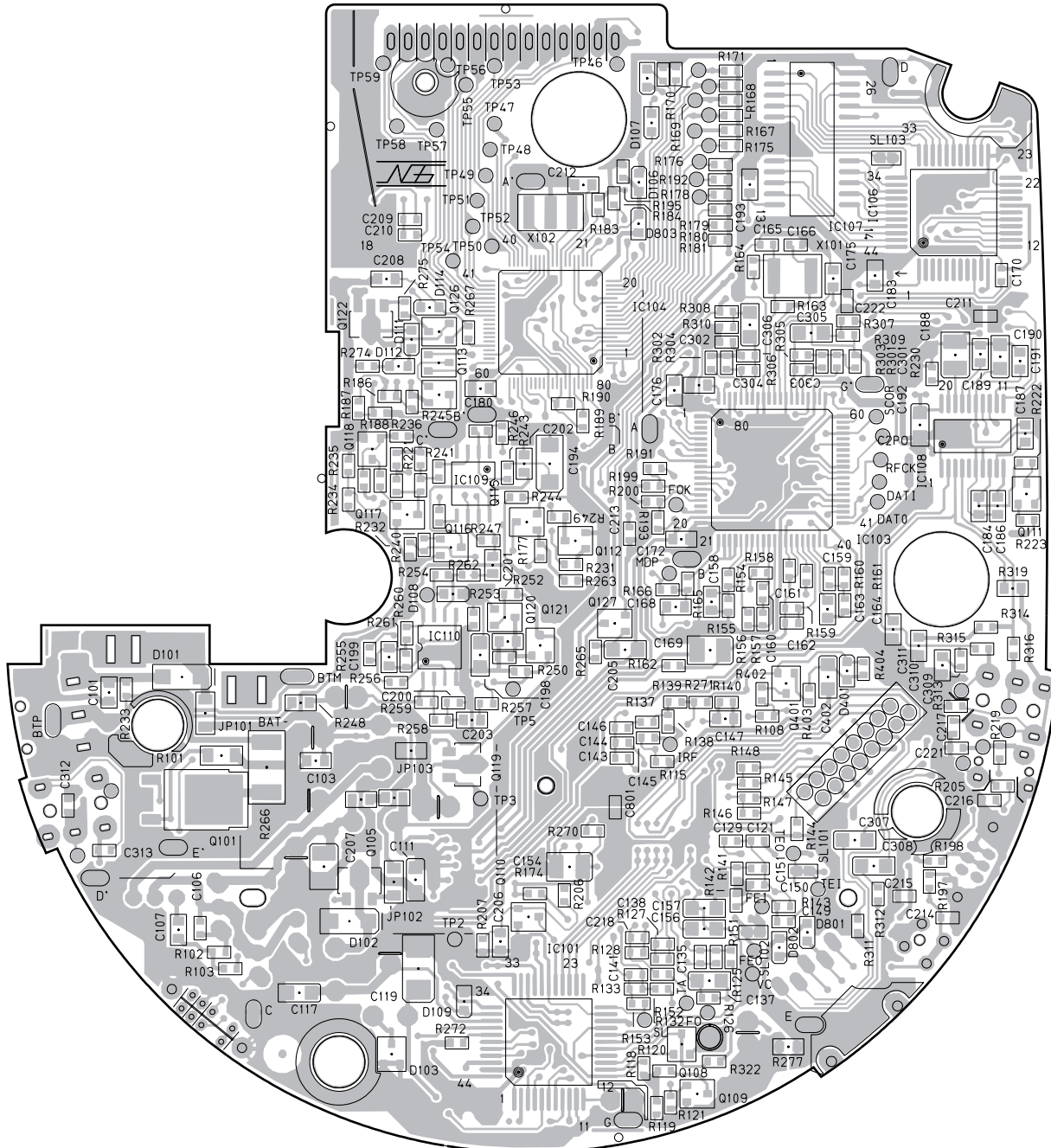
3. The parts mounted on this PCB include all necessary parts for several destination.  
For further information for respective destinations, be sure to check with the schematic diagram.

**4. Viewpoint of PCB diagrams**



**SIDE B**

**A CD AMP UNIT**



- IC107
- B
- IC106
- Q122 IC104
- Q126
- Q113
- Q118 IC108
- IC109 IC103
- Q117 Q115 Q111
- Q112
- C
- IC1110
- Q120
- Q127 Q401
- Q119
- Q101
- Q105
- D
- IC101
- Q108
- Q109

## 5. PCB PARTS LIST

- NOTES :
- Parts marked by “NSP” are generally unavailable because they are not in our Master Spare Parts List.
  - The  $\Delta$  mark found on some component parts indicates the importance of the safety factor of the part. Therefore, when replacing, be sure to use parts of identical designation.
  - When ordering resistors, first convert resistance values into code form as shown in the following examples.
- Ex. 1 When there are 2 effective digits (any digit apart from 0), such as 560 ohm and 47k ohm (tolerance is shown by J = 5%, and K = 10%).
- 560  $\Omega$   $\rightarrow$   $56 \times 10^1 \rightarrow 561$  ..... RD1/4PU  $\boxed{5} \boxed{6} \boxed{1} J$   
 47k  $\Omega$   $\rightarrow$   $47 \times 10^3 \rightarrow 473$  ..... RD1/4PU  $\boxed{4} \boxed{7} \boxed{3} J$   
 0.5  $\Omega$   $\rightarrow$  R50 ..... RN2H  $\boxed{R} \boxed{5} \boxed{0} K$   
 1  $\Omega$   $\rightarrow$  1R0 ..... RS1P  $\boxed{1} \boxed{R} \boxed{0} K$
- Ex. 2 When there are 3 effective digits (such as in high precision metal film resistors).
- 5.62k  $\Omega$   $\rightarrow$   $562 \times 10^1 \rightarrow 5621$  ..... RN1/4PC  $\boxed{5} \boxed{6} \boxed{2} \boxed{1} F$

### ■ LIST OF WHOLE PCB ASSEMBLIES

Mark	Symbol and Description	Part No.			Remarks
		PCD-001, 004 KUCXTL	PCD-001, 004 NYXTL	PCD-001, 004 NVXTL, ZBXTL	
NSP	CD AMP ASSY └ CD AMP UNIT CD SW UNIT	PZW1017 2575002000 2575005000	PWZ1019 2575003000 2575005000	PWZ1018 2575004000 2575005000	

### ■ CONTRAST OF PCB ASSEMBLIES

#### CD AMP UNIT

PZW1017, PWZ1019 and PWZ1018 are constructed the same except for the following:

Mark	Symbol and Description	Part No.			Remarks
		PZW1017	PZW1019	PZW1018	
	C900, C901, C902 EB900 EB901	Not used Not used Not used	CKSQYB104K50 HS330 HM471	CKSQYB104K50 HS330 HM471	

### ■ PARTS LIST FOR PCD-001/KUCXTL

Mark No.	Description	Part No.	Mark No.	Description	Part No.
----------	-------------	----------	----------	-------------	----------

#### **A** CD AMP UNIT

##### SEMICONDUCTORS

IC104 (CXP83416)	0037417000
IC106 (SM5856ATF)	0911190500
IC103 (CXD2589Q)	0911203800
IC102 (CXA1992AR)	0911203900
IC101 (BA6894K)	0911204000
IC108 (BA3574BFS)	0911204100
IC107 (KM44V1004CJ)	0911839400
IC109, IC110	NJM3414AM
D101, D102 (DRC-RB160L)	0915512800
D106-D108, D110 (DDC-MA111)	0915513700
D801-D803 (DZC-UDZ5.6B)	0915518900
D103 (DRC-RB411D)	0915523400

##### SWITCHES AND RELAYS

S102	0028025000
S103	0028398000
S101	002843400013

##### RESISTORS

VR101 (10k $\Omega$ -B)	0031645103
-------------------------	------------

##### OTHERS

J102	MINI JACK 3.5	0033485001
J101	ADP JACK	003367200013
CN101	CONNECTOR 16P	0034690016
X102	CERAMIC RESONATOR (5 MHz)	0038800000
X101	CERAMIC RESONATOR (16.9344 MHz)	0038999000
	LCD PANEL	004043000013
	BATTERY TARMINAL B	2569181100
	BATTERY TERMINAL C	2569182100

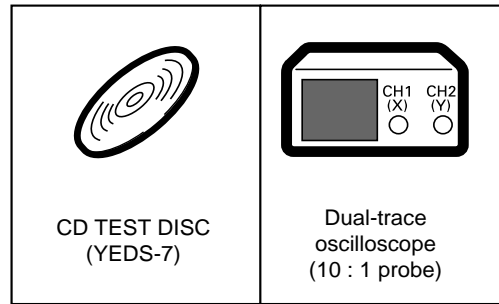
#### **B** CD SW UNIT

CD SW UNIT Parts are not principally supplied.

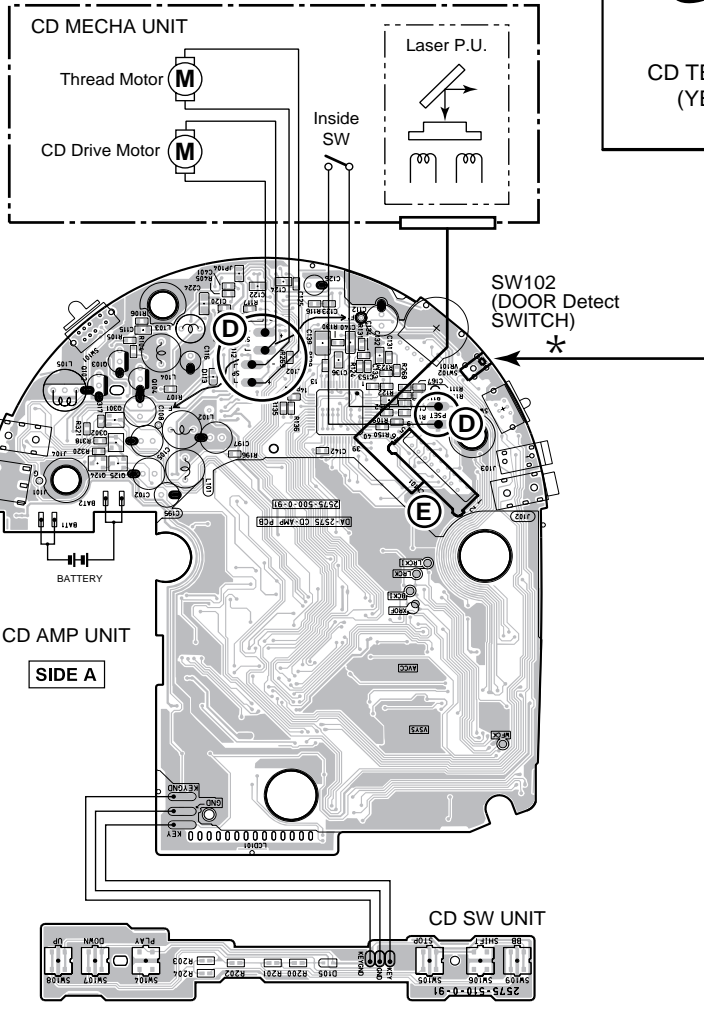
## 6. ADJUSTMENT

### 6.1 PREPARATIONS

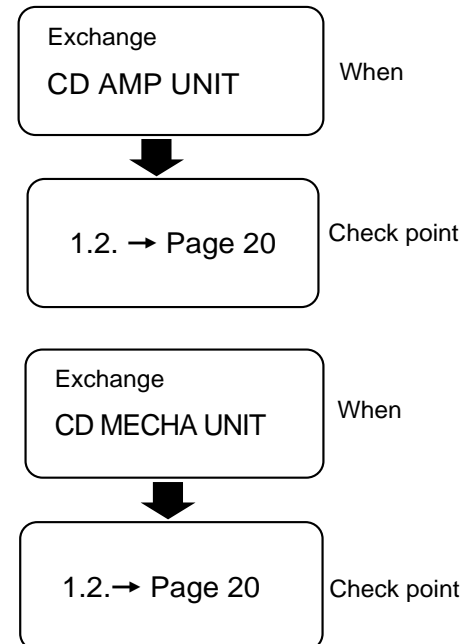
#### 6.1.1 Jigs and Measuring Instruments



#### 6.1.2 Checking Locations

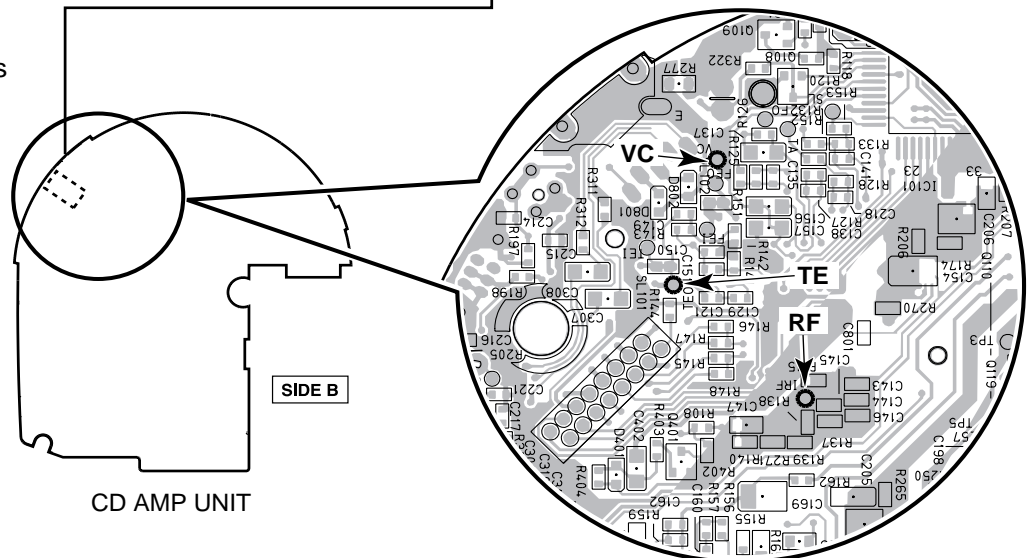


#### 6.1.3 Checking Points



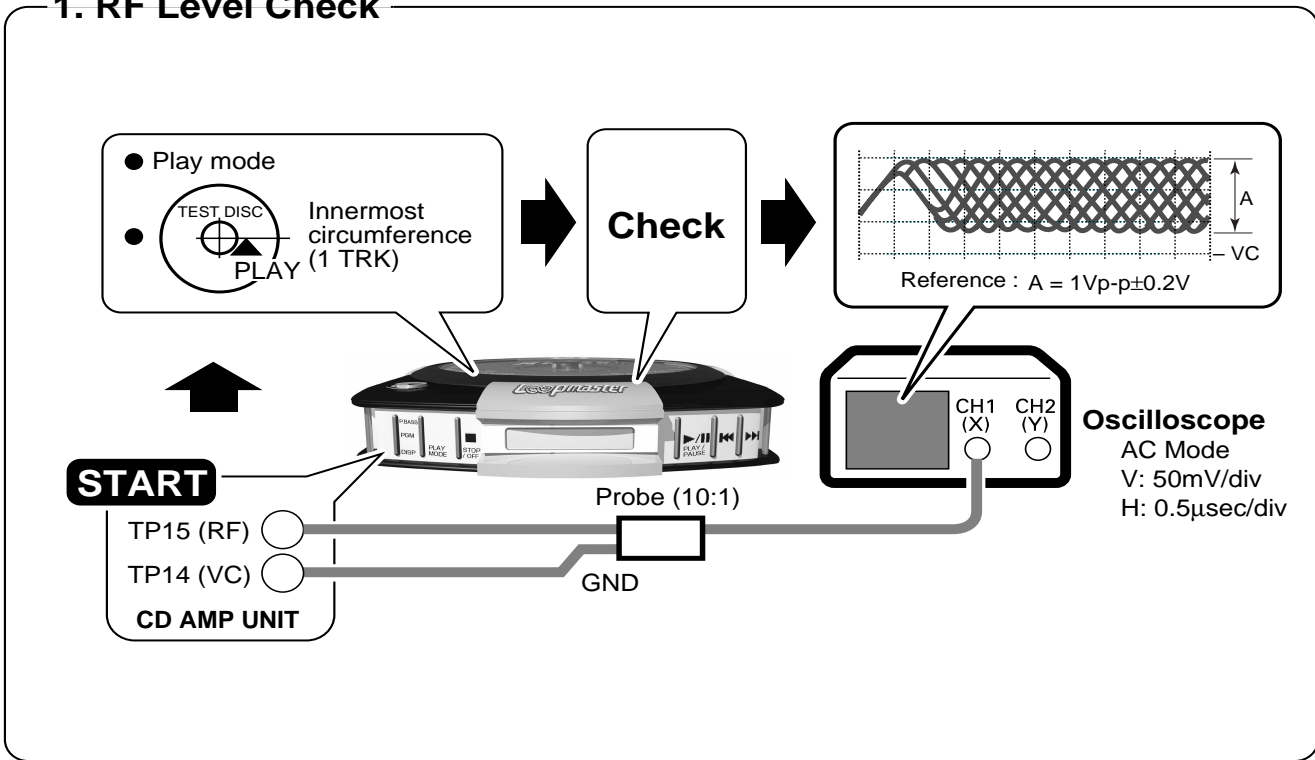
#### ■ Measurement Points

\*  
NOTE: DISC Mounted  
DOOR Detect  
SWITCH  
(SW102) \*  
mark "ON" keep.

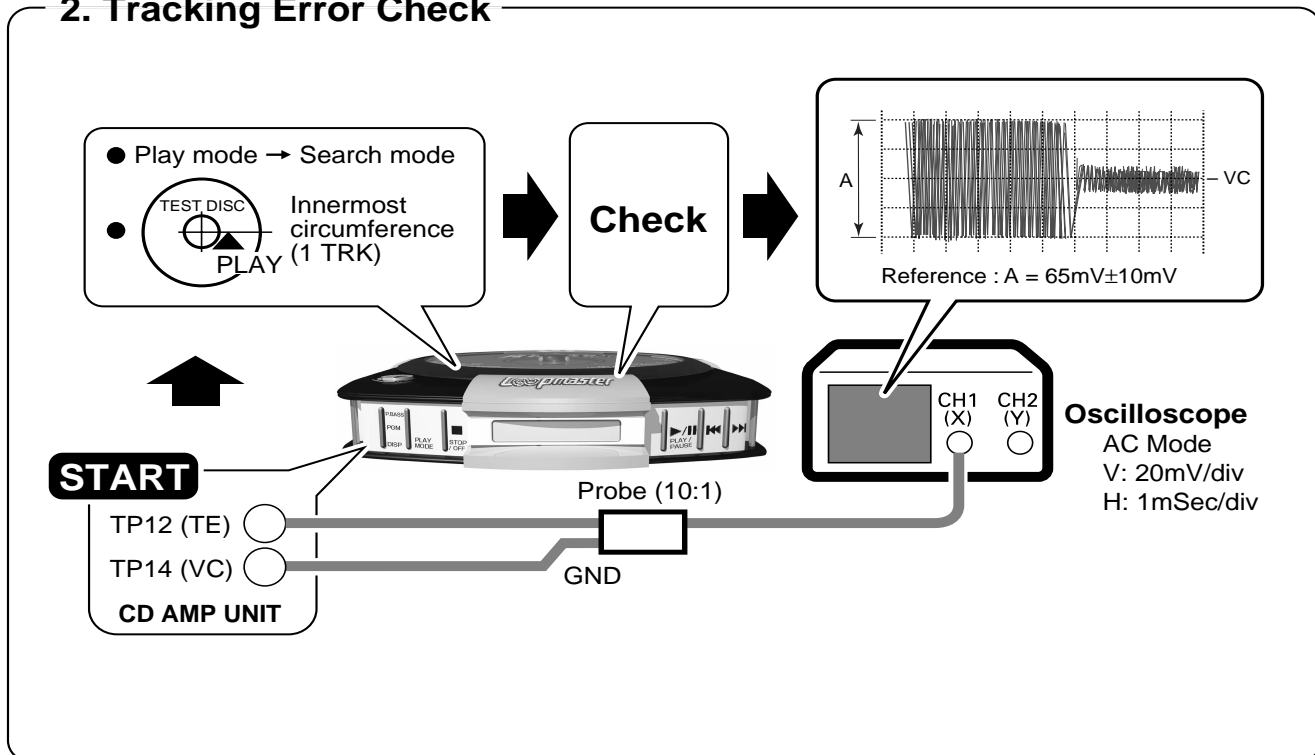


## 6.2 Check and Adjustment

### 1. RF Level Check



### 2. Tracking Error Check

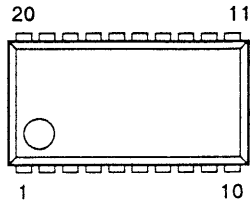


## 7. GENERAL INFORMATION

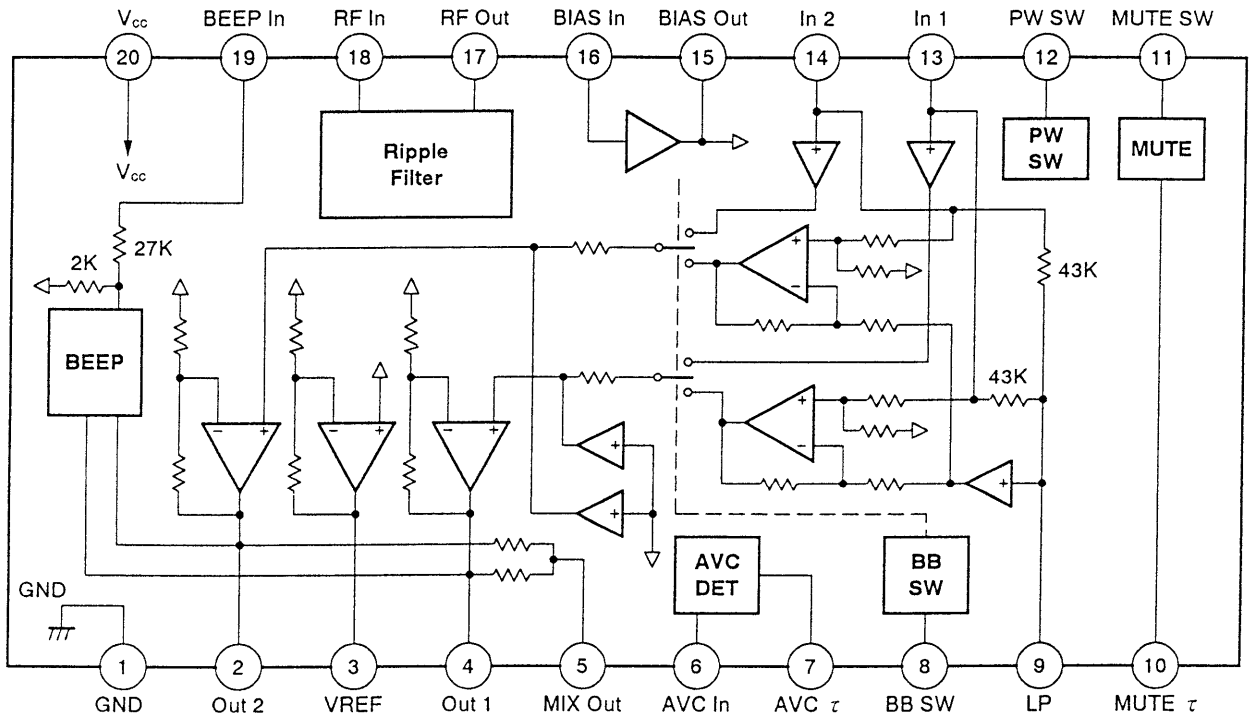
### 7.1 PARTS IC

#### ■ 0911204100 (BA3574BFS) (IC108: CD AMP UNIT)

● Pin Function



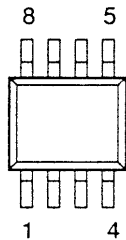
● Block Diagram



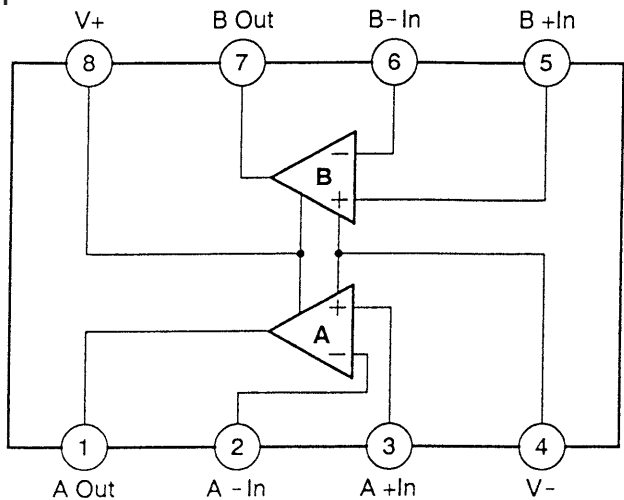
● The information shown in the list is basic information and may not correspond exactly to that shown in the schematic diagrams.

#### ■ NJM3414AM- TE2 (IC109, IC110 : CD AMP UNIT)

● Pin Function



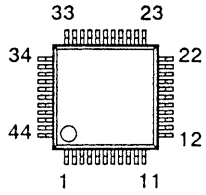
● Block Diagram



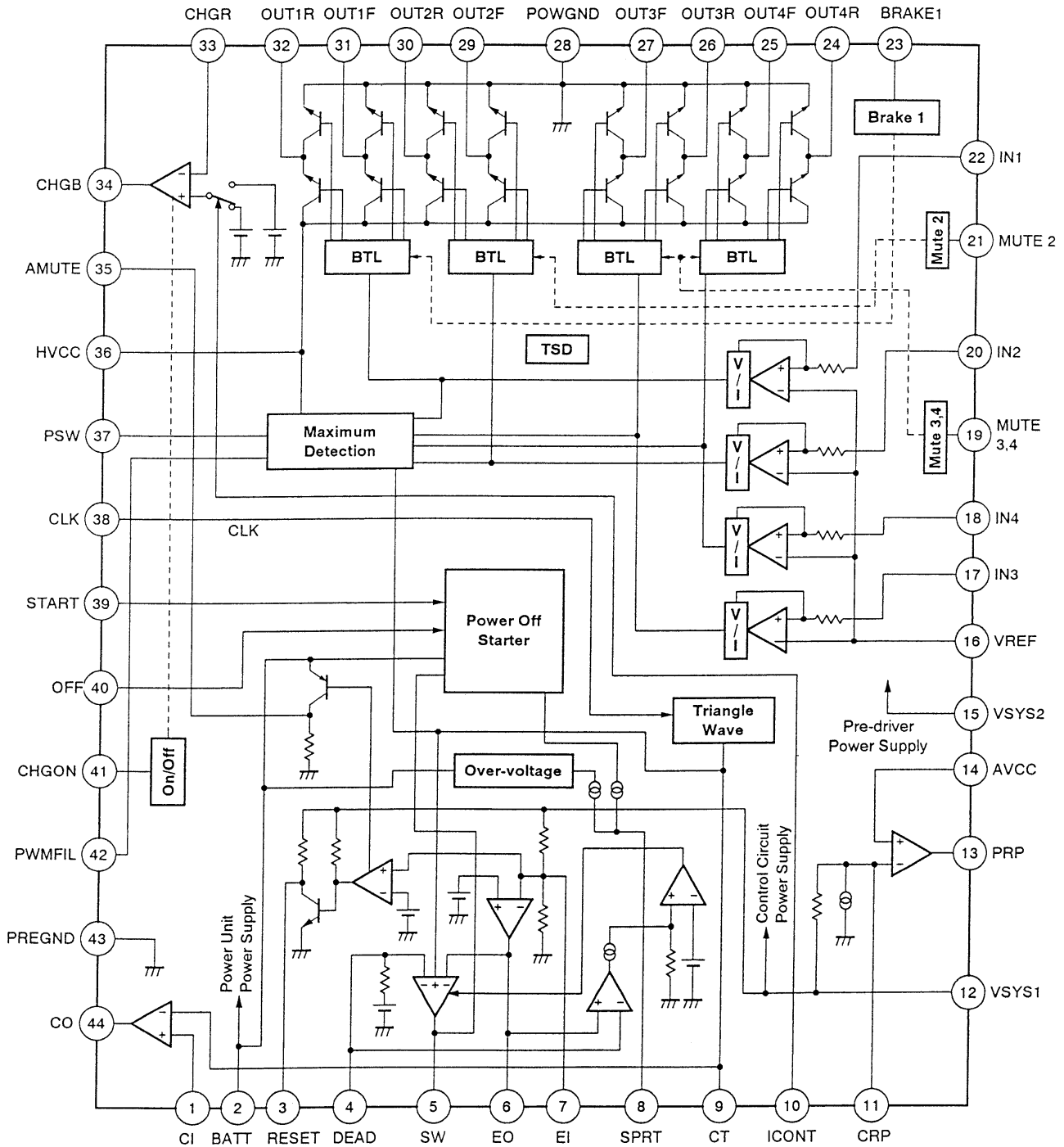


0911204000 (BA6894K) (IC101: CD AMP UNIT)

● Pin Function



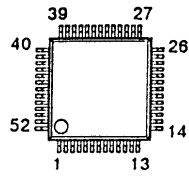
● Block Diagram



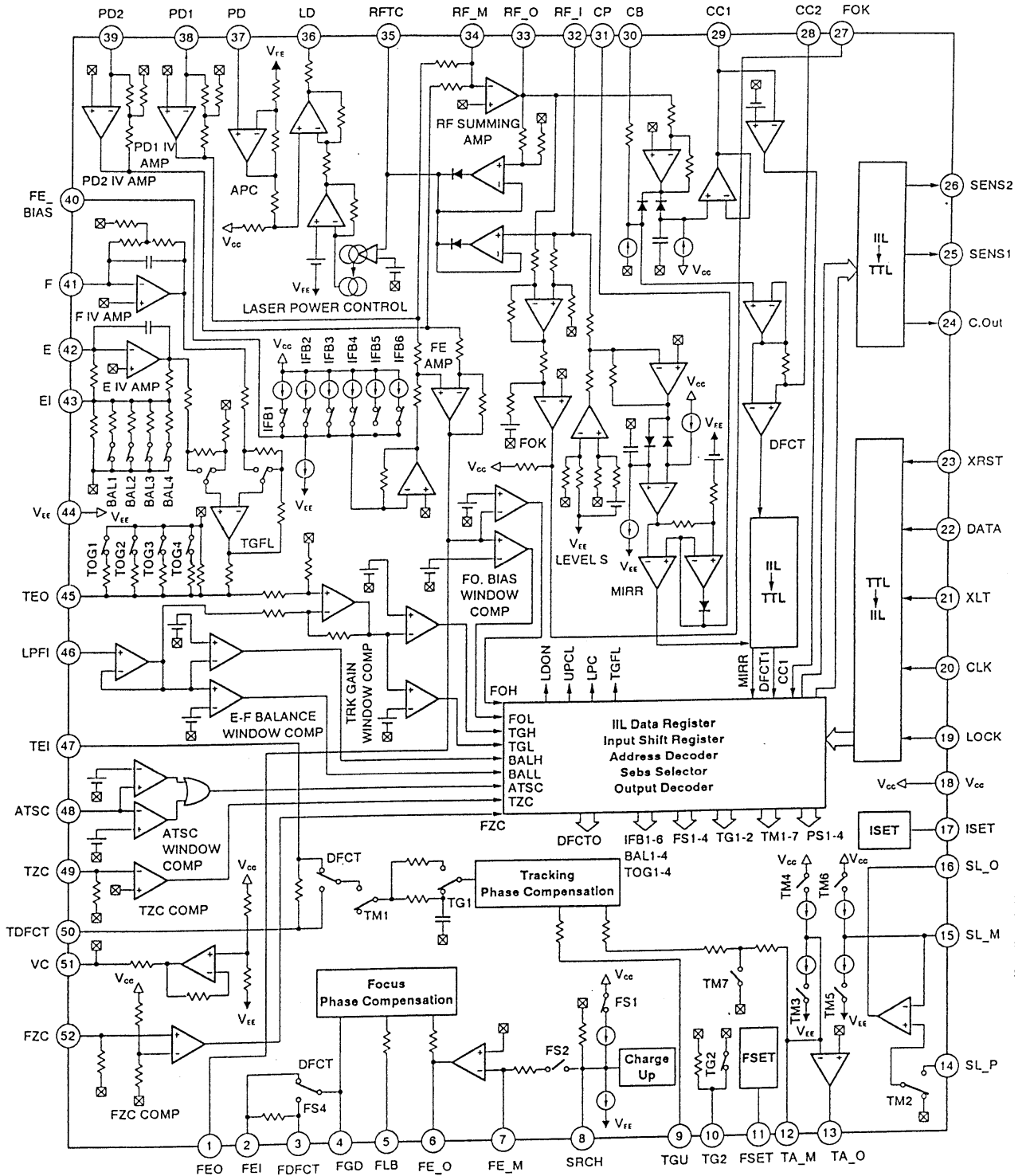


0911203900 (CXA1992AR) (IC102: CD AMP UNIT)

● Pin Function

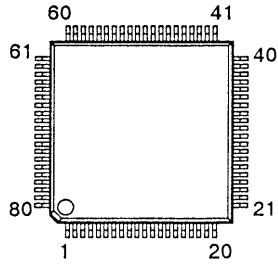


● Block Diagram

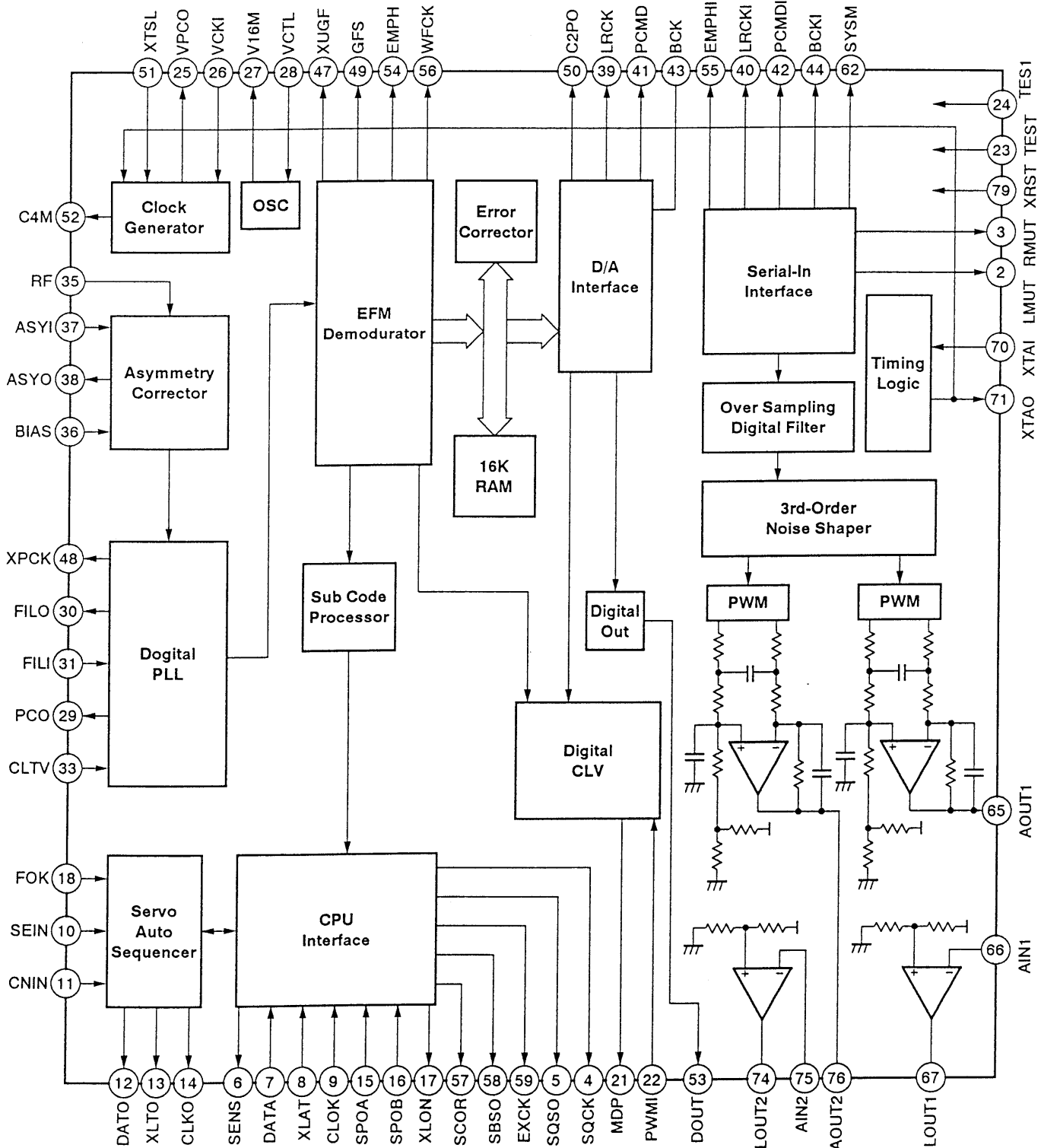


0911203800 (CXD2589Q) (IC103: CD AMP UNIT)

● Pin Function



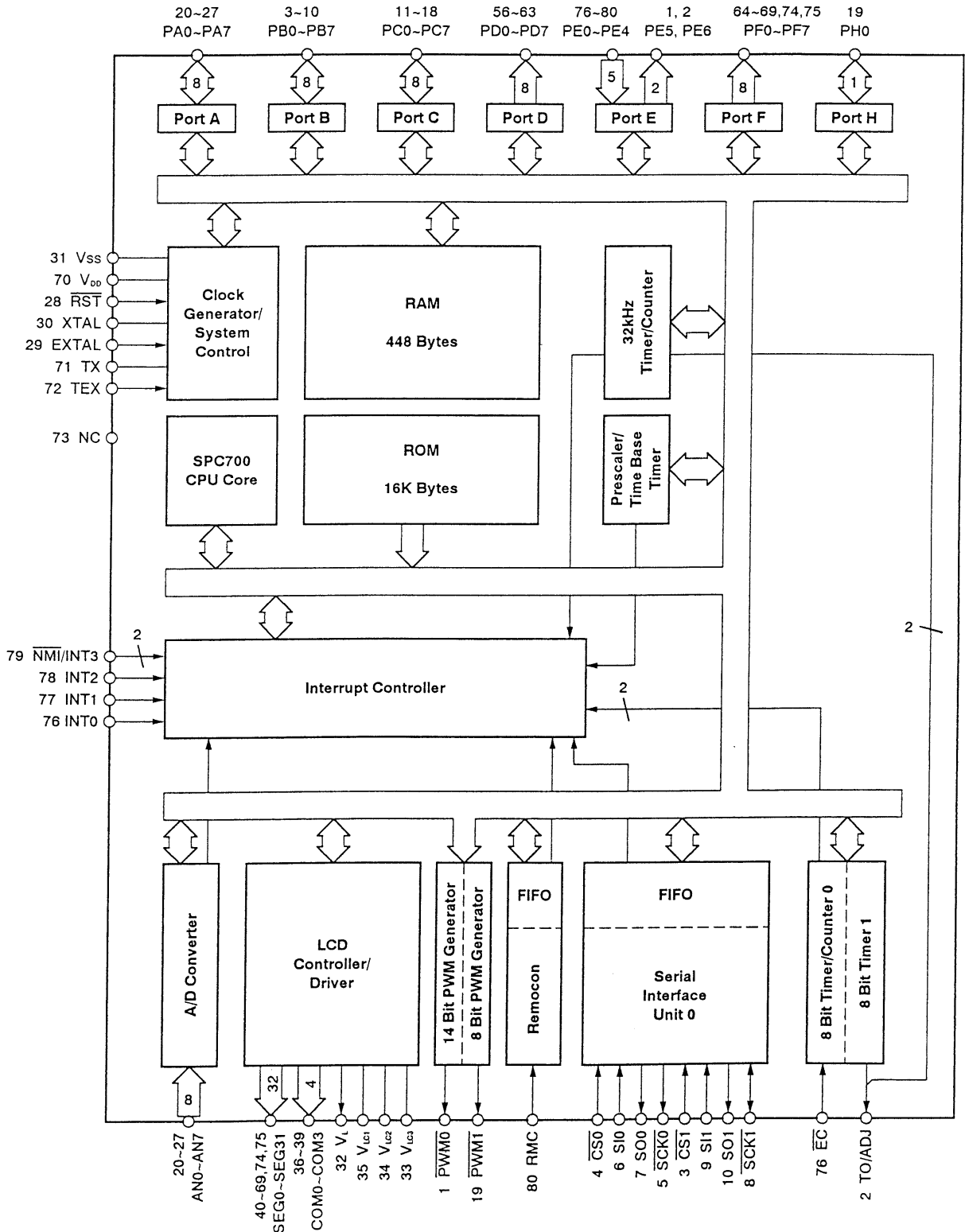
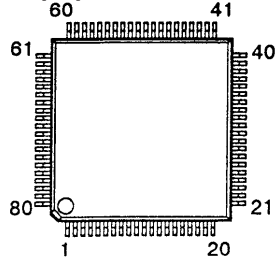
● Block Diagram



0037417000 (CXP83416) (IC104: CD AMP UNIT)

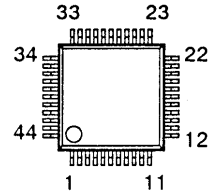
● Pin Function

● Block Diagram

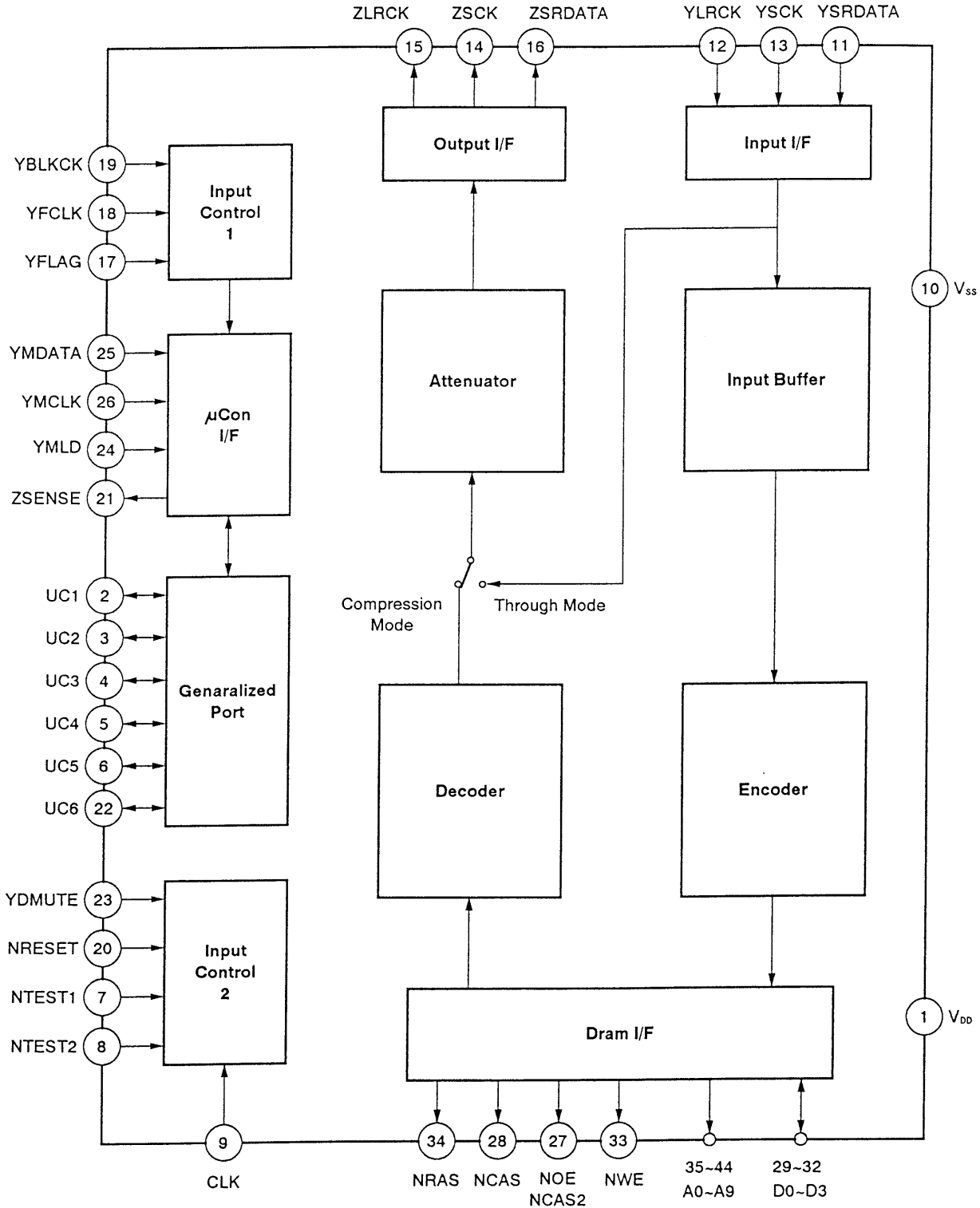


■ 091190500 (SM5856ATF) (IC106: CD AMP UNIT)

● Pin Function

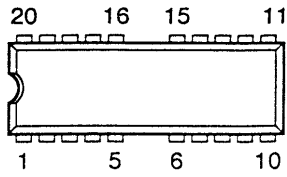


● Block Diagram

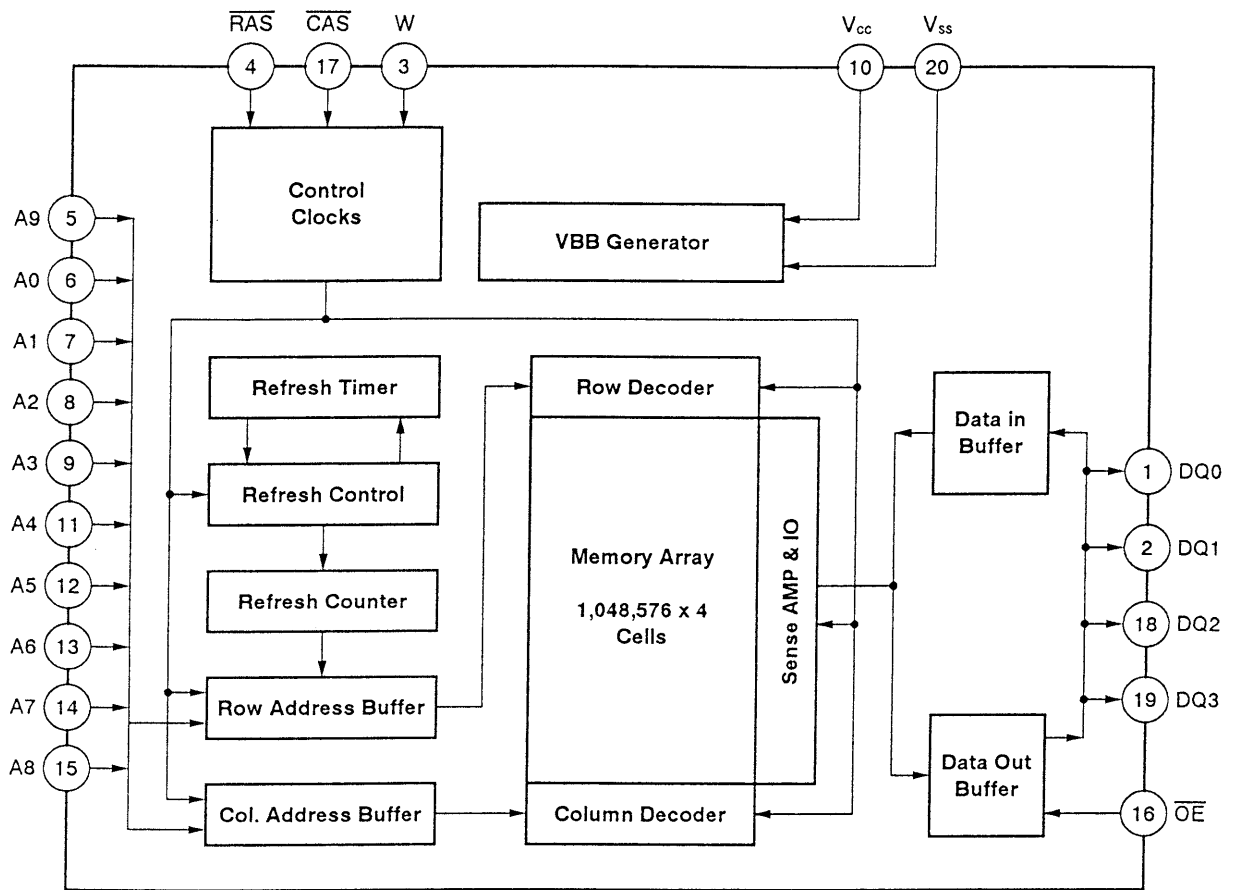


■ 0911839400 (KM44V1004CJ-6) (IC107: CD AMP UNIT)

● Pin Function



● Block Diagram



## 7.2 DIAGNOSIS

### 7.2.1 DISASSEMBLY

#### 1. Remove the CASE B

STEP (1) → (3) → (4) → (5)

#### 2. Remove the CD MECHA UNIT

STEP (1) → (2) → (3)

#### 3. Remove the CD DOOR ASSY

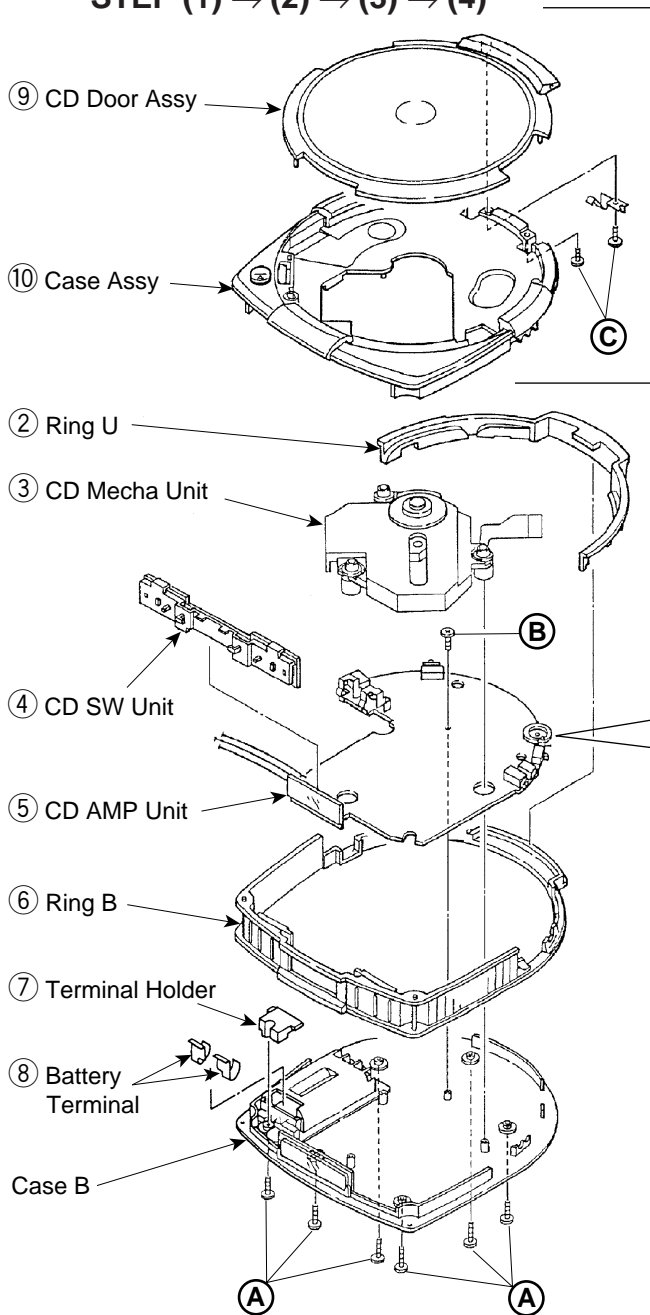
STEP (1) → (6)

#### 4. Remove the CD AMP UNIT

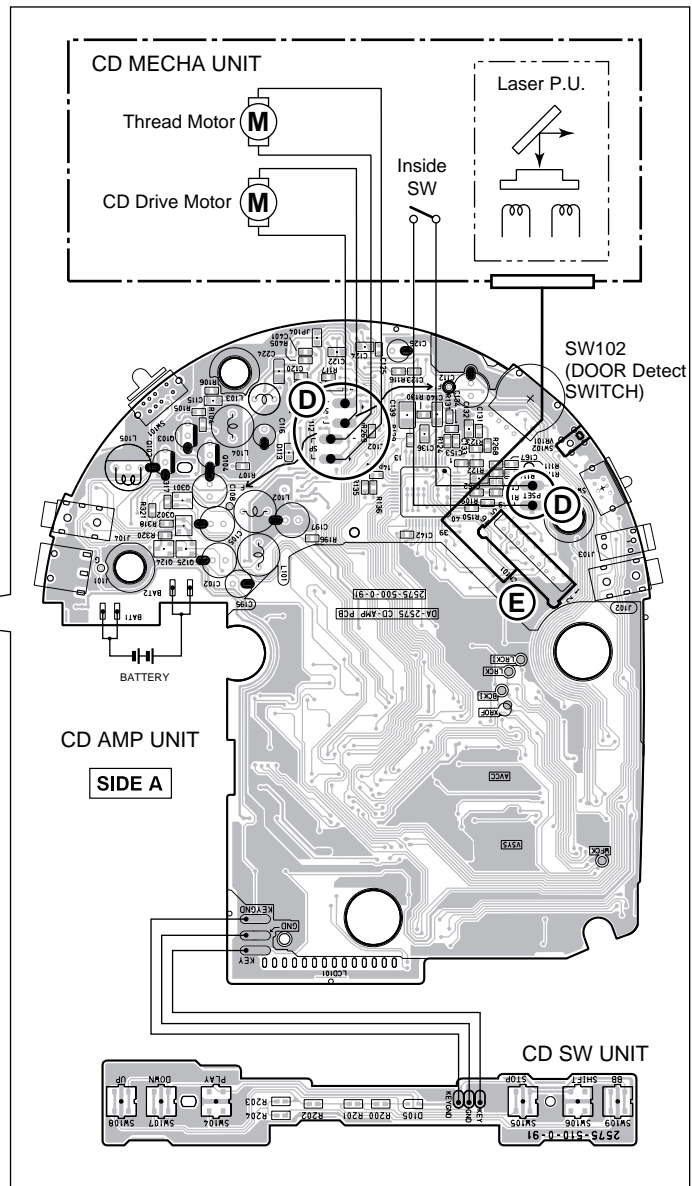
STEP (1) → (2) → (3) → (4)

#### Disassembly process

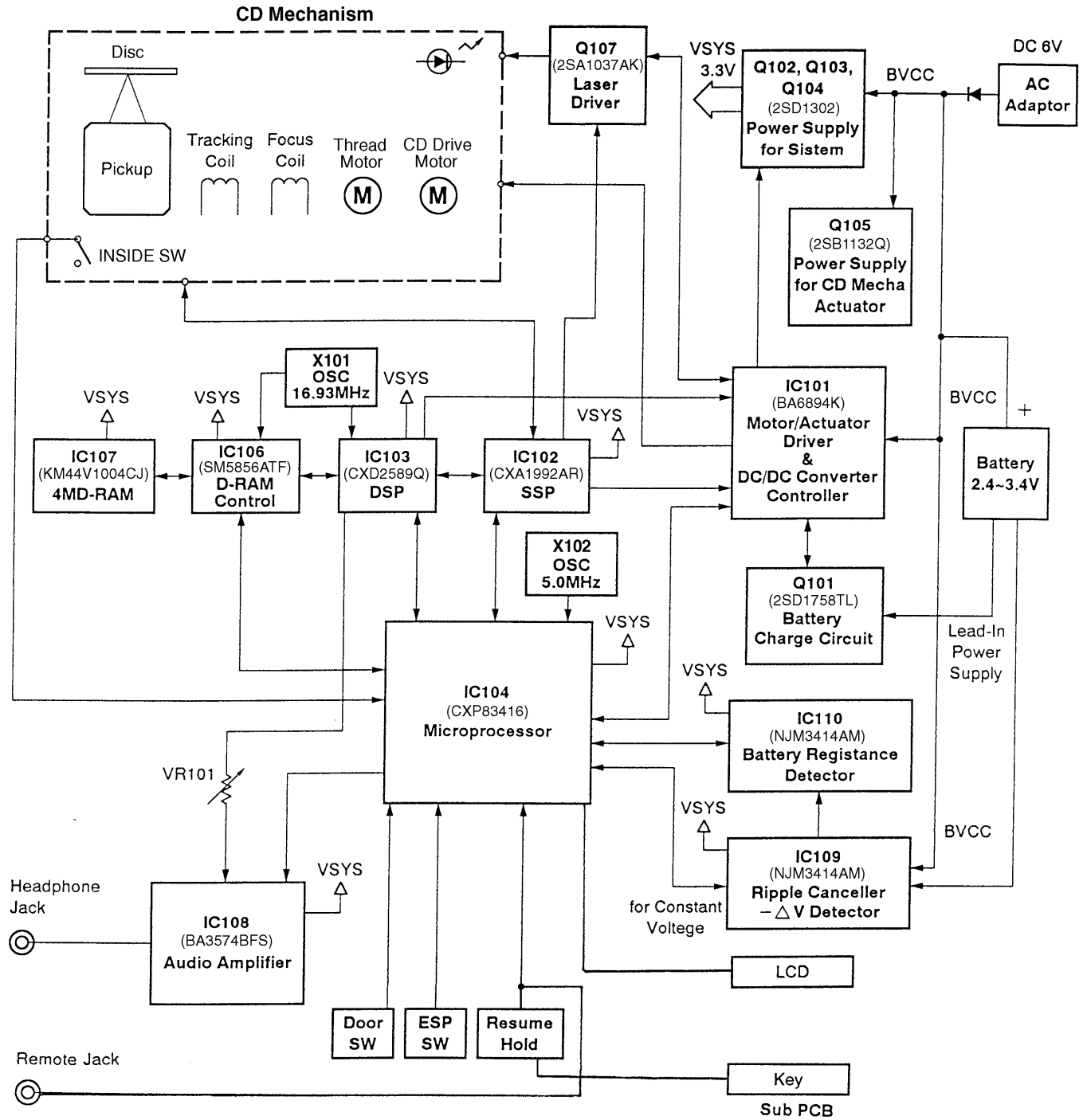
- (1) Remove the six Screws (A) to remove the Case Kit (1) and Ring U (2) .
- (2) The six lead wire (D) from the CD MechaUnit (3) to remove connector wire (E).
- (3) Remove the CD Mecha Unit (3) .
- (4) Remove the Screw (B) to remove the CD SW Unit (4), CD AMP Unit (5) and Ring B (6) .
- (5) Remove the Terminal Holder (7) Battery Terminal (8).
- (6) Remove the two Screws (C) to remove the Case Assy (10) to CD Door Assy (9).



① Case Kit



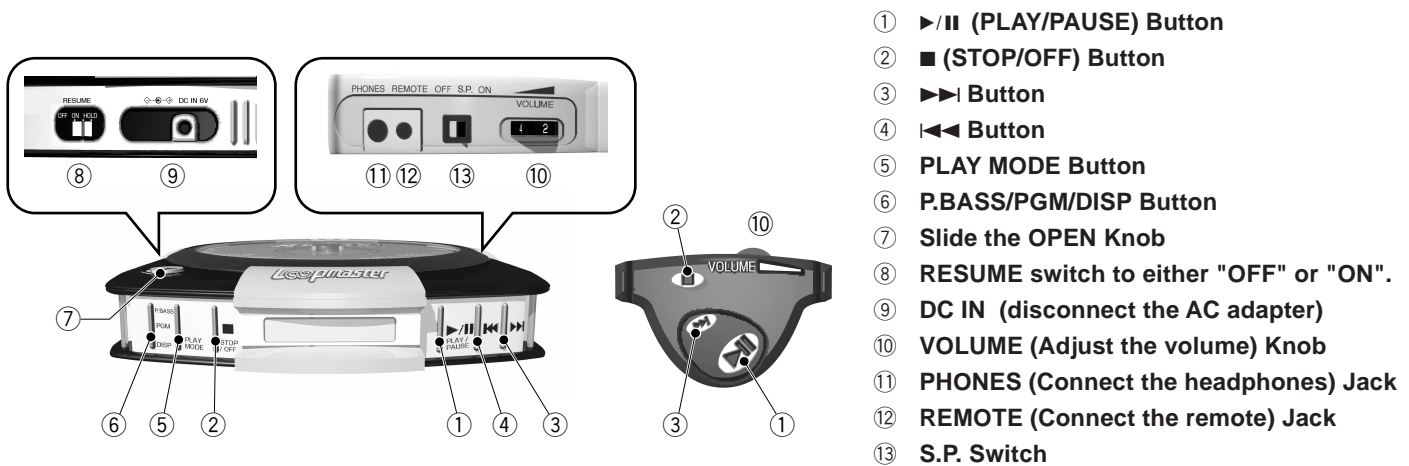
### 7.3 BLOCK DIAGRAM





## 8. PANEL FACILITIES AND SPECIFICATIONS

### ■ PANEL FACILITIES

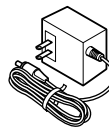


- ① ►/|| (PLAY/PAUSE) Button
- ② ■ (STOP/OFF) Button
- ③ ►► Button
- ④ ◀◀ Button
- ⑤ PLAY MODE Button
- ⑥ P.BASS/PGM/DISP Button
- ⑦ Slide the OPEN Knob
- ⑧ RESUME switch to either "OFF" or "ON".
- ⑨ DC IN (disconnect the AC adapter)
- ⑩ VOLUME (Adjust the volume) Knob
- ⑪ PHONES (Connect the headphones) Jack
- ⑫ REMOTE (Connect the remote) Jack
- ⑬ S.P. Switch

#### Accessory



PCD-001 to PCD-004 Common  
INNERPHONE With Remote  
(PZP1007)



AC Adapter  
(002753800113)  
Except ZBXTL  
type



Ni-Cd BATTERY  
(008620700303)

NYXTL and NVXTL  
types Only

Operating instructions

### ■ SPECIFICATIONS

#### ■ General

Type ..... Compact disc player  
Signal reading system ..... Semiconductor laser

#### ■ Audio output

Frequency characteristic ..... 20 Hz to 20 kHz ± 3dB  
Headphones output ..... 10mW + 10mW

#### ■ Power supply/Others For NYXTL and NVXTL types

Rechargeable Ni-Cd batteries (two, included) .....  
..... 600mAh ( DC2.4V )  
External power supply .....  
AC 230V (included AC adapter, DC 6V )  
Size AA alkaline batteries (two,sold separately) ..... DC 3V  
Continuous playing time (with S.P. switch off)  
..... Approx. 10 hours(using alkaline batteries)  
..... Approx. 3.0 hours(using included rechargeable Ni-Cd

#### ■ Power supply/Others For KUCXTL type

External power supply .....  
AC 120V (included AC adapter, DC 6V )  
Size AA alkaline batteries (two,sold separately) ..... DC 3V  
Continuous playing time (with S.P. switch off)  
..... Approx. 10 hours(using alkaline batteries)  
External dimensions ..... 147(W) x 31.5(H) x 161(D) mm  
Unit weight : Approx. .... 285 g

#### ■ Power supply/Others For ZBXTL type

Size AA alkaline batteries X2 ..... DC 3V  
Continuous playing time (with S.P. switch off) .....  
Approx. 10 hours(using alkaline batteries)  
External dimensions ..... 147(W) x 31.5(H) x 161(D) mm  
Unit weight : Approx. .... 285 g

#### ■ Accessories

AC adapter ..... 1  
Except ZBXTL  
Stereo headphones w/remote control(PZP1007) ..... 1  
Rechargeable Ni-Cd battery (008620700303) ..... 2  
NYXTL and NVXTL Only  
Operating instructions ..... 1

#### Note:

The specifications and design subject to possible modification without notice, due to improvements.