

Service Manual

 **PIONEER®**
The Art of Entertainment

ORDER NO.
RRV1994

PORTABLE CD PLAYER

PCD-009

PCD-010

PCD-011

- Refer to the service manual RRV1992 for PCD-001/KUCXTL.
- Parts of the exploded view are all mentioned in this manual.

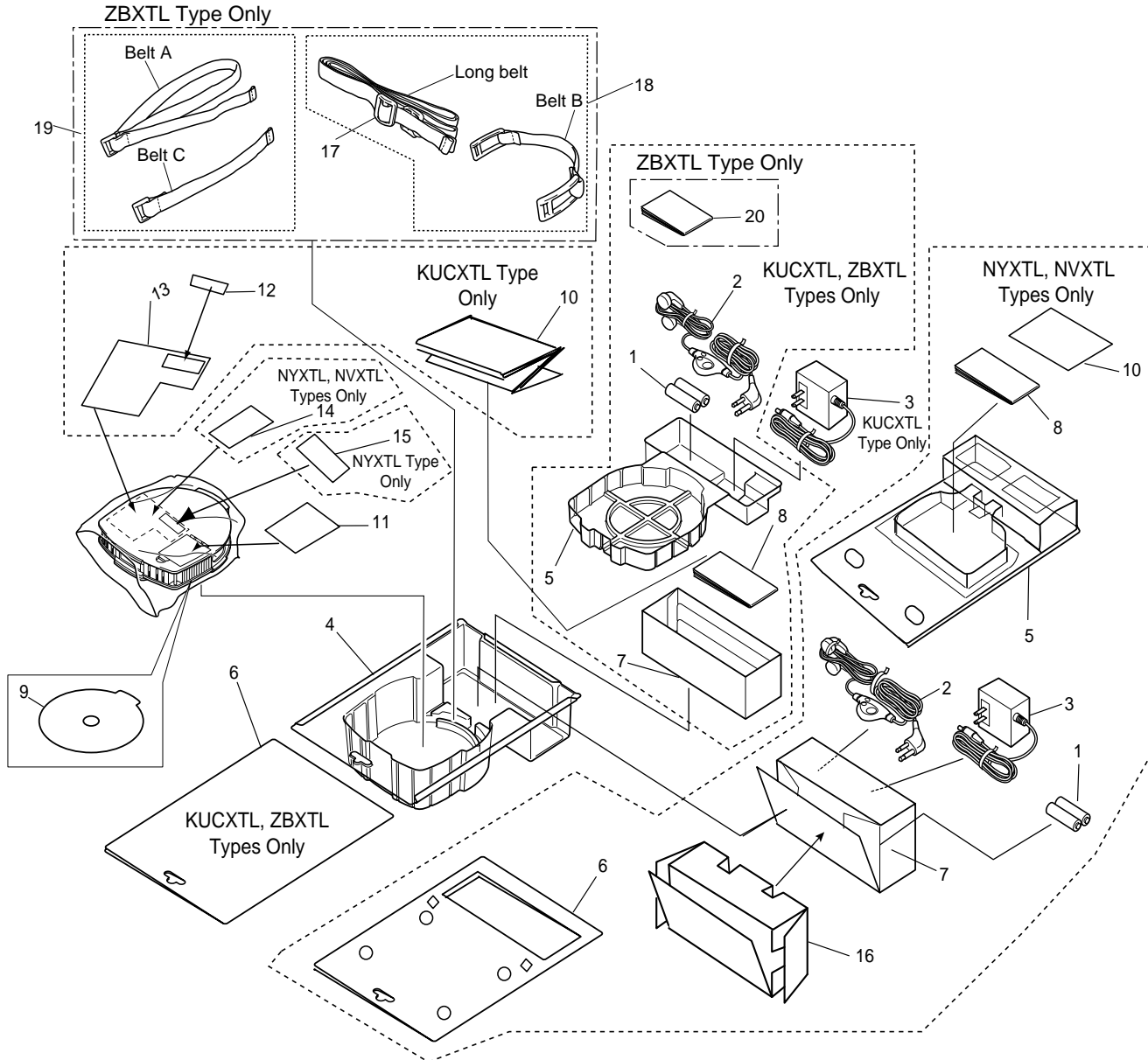
THIS MANUAL IS APPLICABLE TO THE FOLLOWING MODEL(S) AND TYPE(S).

Type	Model			Power Requirement	Remarks
	PCD-009	PCD-010	PCD-011		
KUCXTL	○	○	○	AC120V ADAPTOR or BATTERIES (1.5VX2) Not included	
ZBXTL	○	○	○	BATTERIES (Two included)	
NVXTL	○	—	—	AC230V ADAPTOR or BATTERIES (Two included)	
NYXTL	○	—	—	AC230V ADAPTOR or BATTERIES (Two included)	

1. EXPLODED VIEWS AND PARTS LIST

- NOTES :
- Parts marked by “NSP” are generally unavailable because they are not in our Master Spare Parts List.
 - The \triangle mark found on some component parts indicates the importance of the safety factor of the part. Therefore, when replacing, be sure to use parts of identical designation.
 - Screw adjacent to ∇ mark on the product are used for disassembly.

1.1 PACKING



■ PACKING PARTS LIST OF PCD-009


PCD-009/KUCXTL, NVXTL, NYXTL and ZBXTL are constructed the same except for the following:

Mark	No.	Symbol and Description	Part No.				Remarks	
			PCD-009					
			KUCXTL	NVXTL	NYXTL	ZBXTL		
NSP	1	Battery (KR, AA)	Not used	008620700303	008620700303	Not used		
	1	Battery (LR6, AA)	Not used	Not used	Not used	AEX1007		
	2	Innerphone with remote	PZP1007	PZP1007	PZP1007	PZP1007		
	⚠	3	AC Adapter	002753800113	002754000113	002753900113	Not used	
	4	Blister Package	2575902001	Not used	Not used	2575902001		
	4	Blister Front	Not used	2575940000	2575940000	Not used		
	5	Blister Package C	2575904001	Not used	Not used	2575904001		
	5	Blister Rear	Not used	2575941000	2575941000	Not used		
	6	Package Board	2575906004	Not used	Not used	2575906008		
	6	Package Board B	Not used	2575905002	2575905002	Not used		
NSP	7	Package Box	2575916004	Not used	Not used	2575916007		
	7	Package Box B	Not used	2575917002	2575917002	Not used		
	8	Operating Instructions (English/ French)	2575920104	Not used	Not used	Not used		
	8	Operating Instructions (English/ French/ German/ Italian/ Dutch/ Swedish/ Spanish/ Portuguese)	Not used	2575920105	2575920105	Not used		
	8	Operating Instructions (English/ Chinese)	Not used	Not used	Not used	2575920106		
	9	Information Sheet	2575851017	2575851021	2575851021	2575851033		
	10	Guarantee Card	2575925001	2575925002	2575925002	Not used		
	11	BT Caution Label	2575855000	2575855000	2575855000	2575855000		
	NSP	12	FDA Label	2519859000	Not used	Not used	Not used	
	NSP	13	FCC / FDA / DOC Label	2575960000	Not used	Not used	Not used	
NSP	14	WARNING Label	Not used	2575225000	2575225000	Not used		
	15	H. P. SOUND Label	Not used	Not used	2575849000	Not used		
	16	Spacer C	Not used	Not used	2575932000	Not used		
	16	Spacer D	Not used	2575933000	Not used	Not used		
	17	Buckle	Not used	Not used	Not used	2578971000		
	18	Belt set A	Not used	Not used	Not used	2578975003		
	19	Belt set B	Not used	Not used	Not used	2578976003		
	20	Addendum Sheet	Not used	Not used	Not used	2578921000		

PCD-009, PCD-010, PCD-011


■ PACKING PARTS LIST OF PCD-010

PCD-010/KUCXTL and ZBXTL are constructed the same except for the following:

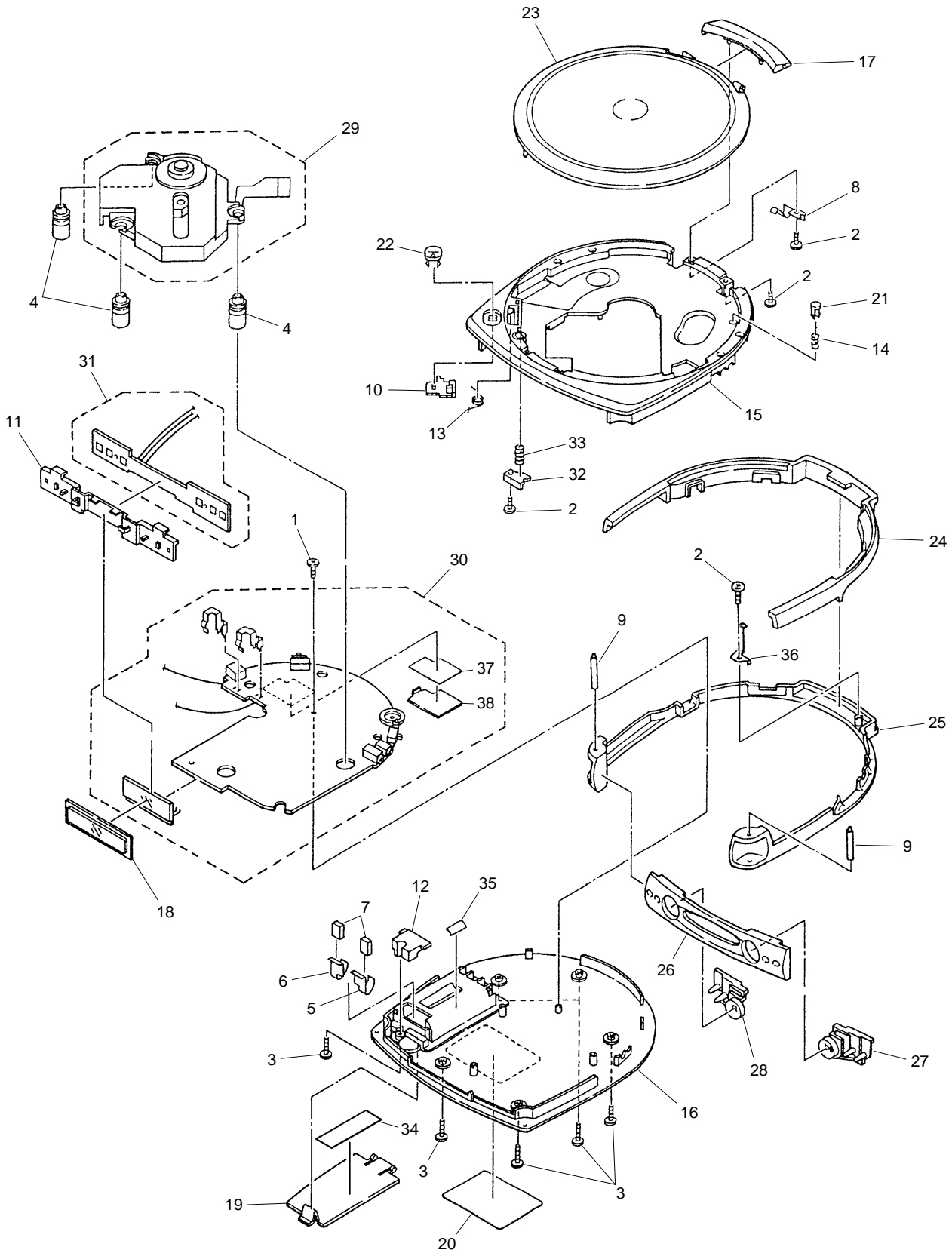
Mark	No.	Symbol and Description	Part No.		Remarks
			KUCXTL type	ZBXTL type	
NSP 	1	Battery (LR6, AA)	Not used	AEX1007	
	2	Innerphone with remote	PZP1007	PZP1007	
	3	AC Adapter	002753800113	Not used	
	4	Blister Package	2575902001	2575902001	
	5	Blister Package C	2575904001	2575904001	
	6	Package Board	2575906004	2575906008	
	7	Package Box	2575916004	2575916007	
	8	Operating Instructions (English/ French)	2575920104	Not used	
	8	Operating Instructions (English/ Chinese)	Not used	2575920106	
	9	Information Sheet	2575851042	2575851034	
NSP	10	Guarantee Card	2575925001	Not used	
	11	BT Caution Label	2575855000	2575855000	
NSP	12	FDA Label	2519859000	Not used	
NSP	13	FCC / FDA / DOC Label	2575960000	Not used	
	14	WARNING Label	Not used	2575225000	
	15	H. P. SOUND Label	Not used	Not used	
	16	Spacer	Not used	Not used	
	17	Buckle	Not used	2578971000	
	18	Belt set A	Not used	2578975002	
	19	Belt set B	Not used	2578976002	
	20	Addendum Sheet	Not used	2578921000	

■ PACKING PARTS LIST OF PCD-011

PCD-011/KUCXTL and ZBXTL are constructed the same except for the following:

Mark	No.	Symbol and Description	Part No.		Remarks
			KUCXTL type	ZBXTL type	
NSP 	1	Battery (LR6, AA)	Not used	AEX1007	
	2	Innerphone with remote	PZP1007	PZP1007	
	3	AC Adapter	002753800113	Not used	
	4	Blister Package	2575902001	2575902001	
	5	Blister Package C	2575904001	2575904001	
	6	Package Board	2575906004	2575906008	
	7	Package Box	2575916004	2575916007	
	8	Operating Instructions (English/ French)	2575920104	Not used	
	8	Operating Instructions (English/ Chinese)	Not used	2575920106	
	9	Information Sheet	2575851043	2575851035	
NSP	10	Guarantee Card	2575925001	Not used	
	11	BT Caution Label	2575855000	2575855000	
NSP	12	FDA Label	2519859000	Not used	
NSP	13	FCC / FDA / DOC Label	2575960000	Not used	
	14	WARNING Label	Not used	2575225000	
	15	H. P. SOUND Label	Not used	Not used	
	16	Spacer	Not used	Not used	
	17	Buckle	Not used	2578971000	
	18	Belt set A	Not used	2578975002	
	19	Belt set B	Not used	2578976002	
	20	Addendum Sheet	Not used	2578921000	

1.2 EXTERIOR



(1) EXTERIOR PARTS LIST

Mark	No.	Description	Part No.	Mark	No.	Description	Part No.
	1	Screw	0974354408		21	Detection Knob	See Contrast table (2)
	2	Screw	0977020053		22	Open Knob	See Contrast table (2)
	3	Screw	0977020103		23	CD Door	See Contrast table (2)
	4	Rubber Cushion	2528300000		24	Ring U	See Contrast table (2)
	5	Battery Terminal A1	2569184100		25	Ring B	See Contrast table (2)
	6	Battery Terminal A2	2569185100		26	Front Panel	See Contrast table (2)
	7	Cushion 2	2569868000		27	Tact Knob R	See Contrast table (2)
	8	Plate Spring	2575180000		28	Tact Knob L	See Contrast table (2)
	9	Shaft	2575201000		29	CD MECHA UNIT	2597050000
	10	Lock Lever	2575270000		30	CD AMP UNIT	See Contrast table (2)
	11	LCD Holder	2575271000		31	CD SW UNIT	2575005000
	12	Terminal Holder	2575272000		32	Plate Up	See Contrast table (2)
	13	Open Spring	2575401000		33	Com Spring Up	2575403000
	14	Com Spring	2575402000		34	BT Caution Label	2575855000
	15	Case	See Contrast table (2)	NSP	35	Double Face	2570880000
	16	Case B	See Contrast table (2)		36	Hold Plate	2575181000
	17	Hinge Cover	See Contrast table (2)		37	Insulation Sheet 2	2569886000
	18	LCD Window	2575815002		38	Heat Sink	2569133000
	19	Battery Cover	See Contrast table (2)				
	20	Rear Label	See Contrast table (2)				

(2) CONTRAST TABLE

PCD-009, PCD-010 and PCD-011 are constructed the same except for the following:

Mark	No.	Symbol and Description	Part No.			Remarks
			PCD-009 /KUCXTL /ZBXTL /NVXTL /NYXTL	PCD-010 /KUCXTL /ZBXTL	PCD-011 /KUCXTL /ZBXTL	
	15	Case	2575801009	2575801010	2575801011	
	16	Case B	2575803009	2575803010	2575803011	
	17	Hinge Cover	2577813009	2575813010	2575813011	
	19	Battery Cover	2575816009	2575816010	2575816011	
	20	Rear Label	*	*	*	
	21	Detection Knob	2575865004	2575865001	2575865005	
	22	Open Knob	2575866009	2575866010	2575866011	
	23	CD Door	2577805005	2577805006	2577805007	
	24	Ring U	2578807001	2578807002	2578807003	
	25	Ring B	2578808001	2578808002	2578808003	
	26	Front Panel	2577810005	2577810006	2577810007	
	27	Tact Knob R	2577860005	2577860006	2577860007	
	28	Tact Knob L	2577861005	2577861006	2577861007	
	30	CD AMP UNIT	*	*	*	
	32	Plate Up	2575273004	2575273001	2575273005	

* Refer to "(3) CONTRAST TABLE of Rear Label and CD AMP UNIT".

PCD-009, PCD-010, PCD-011

(3) CONTRAST TABLE of REAR LABEL and CD AMP UNIT

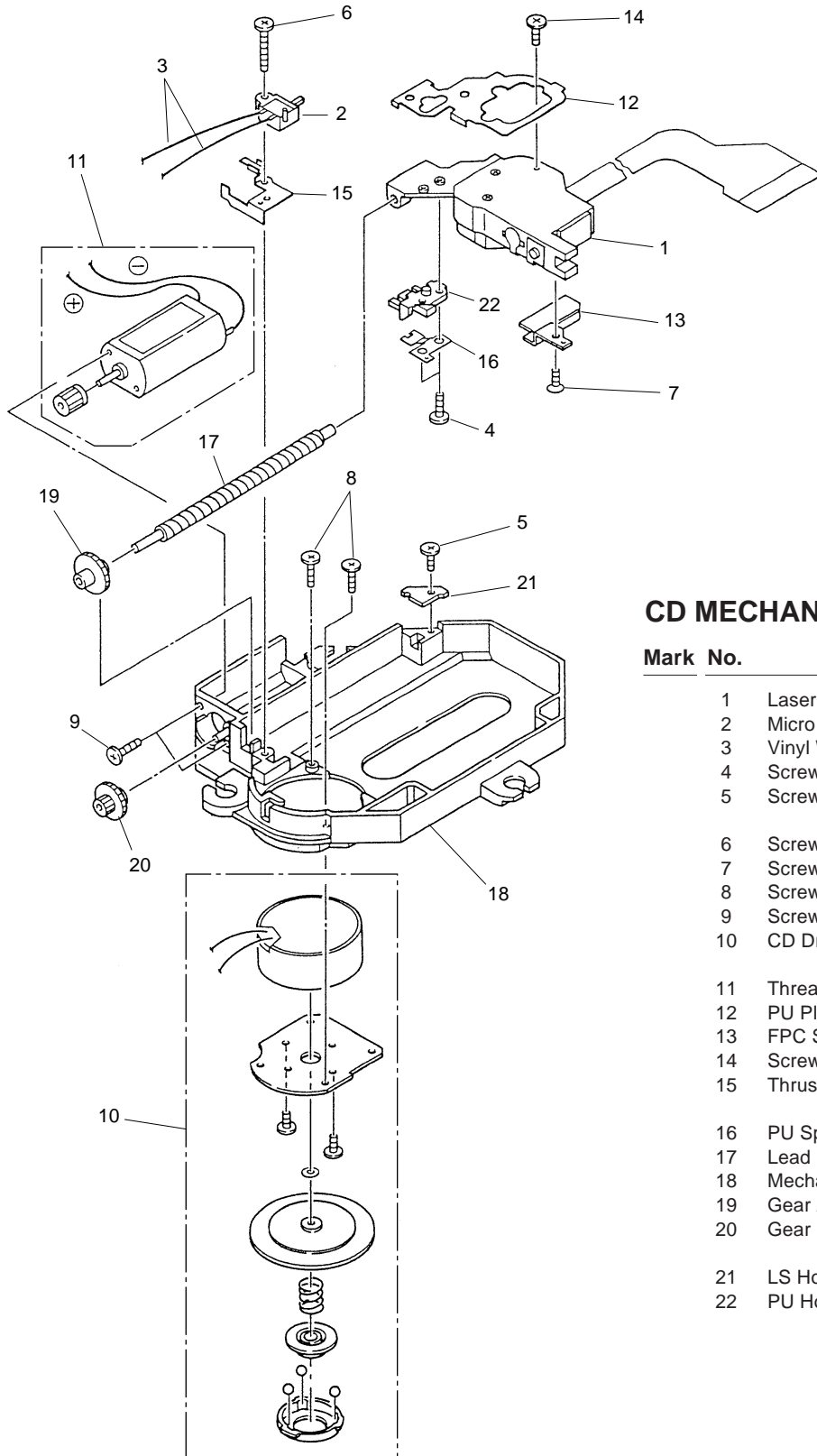
■ for PCD-009

Mark	No.	Symbol and Description	Part No.				Remarks
			PCD-009				
			KUCXTL	NVXTL	NYXTL	ZBXTL	
	20	Rear Label	2575850016	2575850024	2575850020	2575850032	
	30	CD AMP UNIT	2575002000	2575004000	2575003000	2575004000	

■ for PCD-010 and PCD-011

Mark	No.	Symbol and Description	Part No.				Remarks
			PCD-010		PCD-011		
			KUCXTL	ZBXTL	KUCXTL	ZBXTL	
	20	Rear Label	2575850041	2575850033	2575850042	2575850034	
	30	CD AMP UNIT	2575002000	2575004000	2575002000	2575004000	

1.3 CD MECHANISM UNIT SECTION



CD MECHANISM UNIT PARTS LIST

Mark No.	Description	Part No.
1	Laser P.U, SPU3090	002001500001
2	Micro SW	0036819000
3	Vinyl Wire	0968606110
4	Screw	0974354405
5	Screw	0974354508
6	Screw	0974354708
7	Screw	0974665404
8	Screw	0974754403
9	Screw	0974755403
10	CD Drive Motor	2595604100
11	Thread Motor	2597601100
12	PU Plate	2597120000
13	FPC Supporter	2597130000
14	Screw (2X1.85)	2597140000
15	Thrust Spring	2597181100
16	PU Spring	2597182000
17	Lead Screw	2597201000
18	Mecha Chassis	2597250000
19	Gear A	2597256000
20	Gear B	2597257000
21	LS Holder	2597258000
22	PU Holder	2597266000