

Pioneer

Service Manual

ORDER NO.
RRV2067

PORTABLE CD PLAYER

PCD-012

PCD-024

PCD-025

- Refer to the service manual RRV1992 for PCD-001/KUCXTL.
- PCD-012, PCD-024, PCD-025 and PCD-001 are constructed the same except for the **EXPLODED VIEWS AND PARTSLIST.**

THIS MANUAL IS APPLICABLE TO THE FOLLOWING MODEL(S) AND TYPE(S).

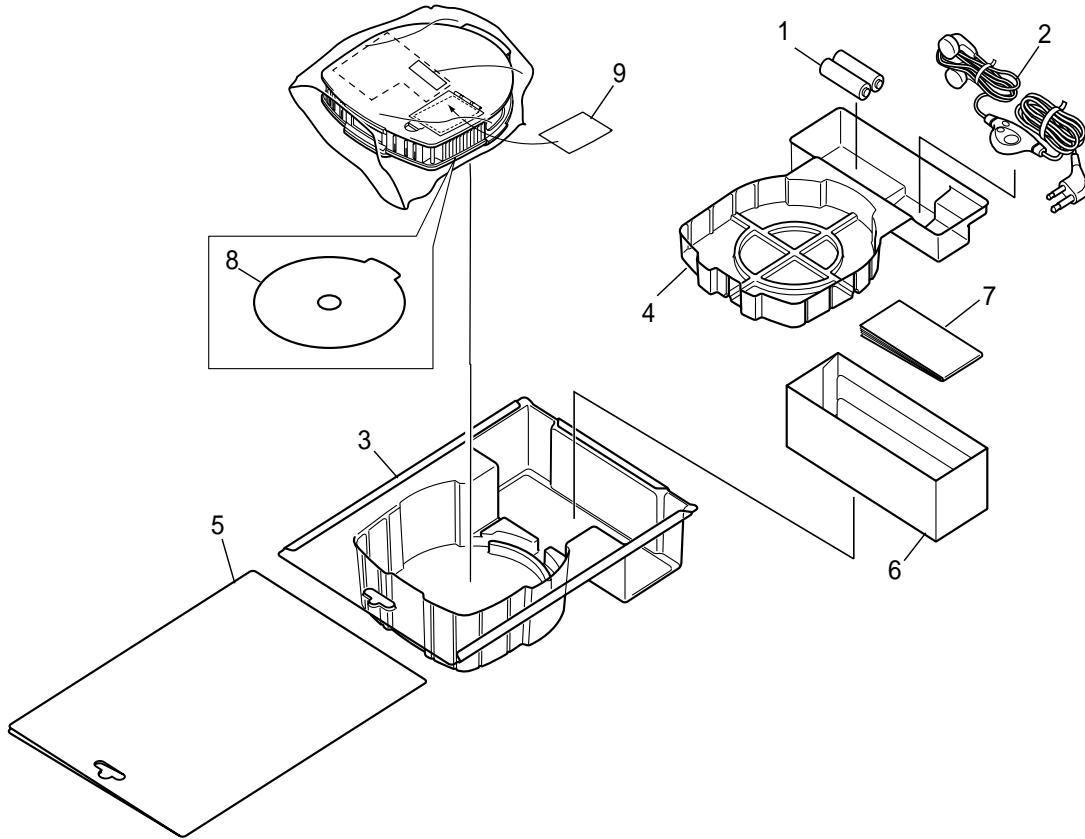
Type	Model			Power Requirement	Remark
	PCD-012	PCD-024	PCD-025		
ZBXTL	○	○	○	BATTERIES (Two included)	

1. EXPLODED VIEWS AND PARTS LIST

- NOTES :
- Parts marked by “NSP” are generally unavailable because they are not in our Master Spare Parts List.
 - The \triangle mark found on some component parts indicates the importance of the safety factor of the part. Therefore, when replacing, be sure to use parts of identical designation.
 - Screw adjacent to ∇ mark on the product are used for disassembly.

■ PCD-012, PCD-024, PCD-025 and PCD-001 are constructed the same except for the PACKING and the EXTERIOR.

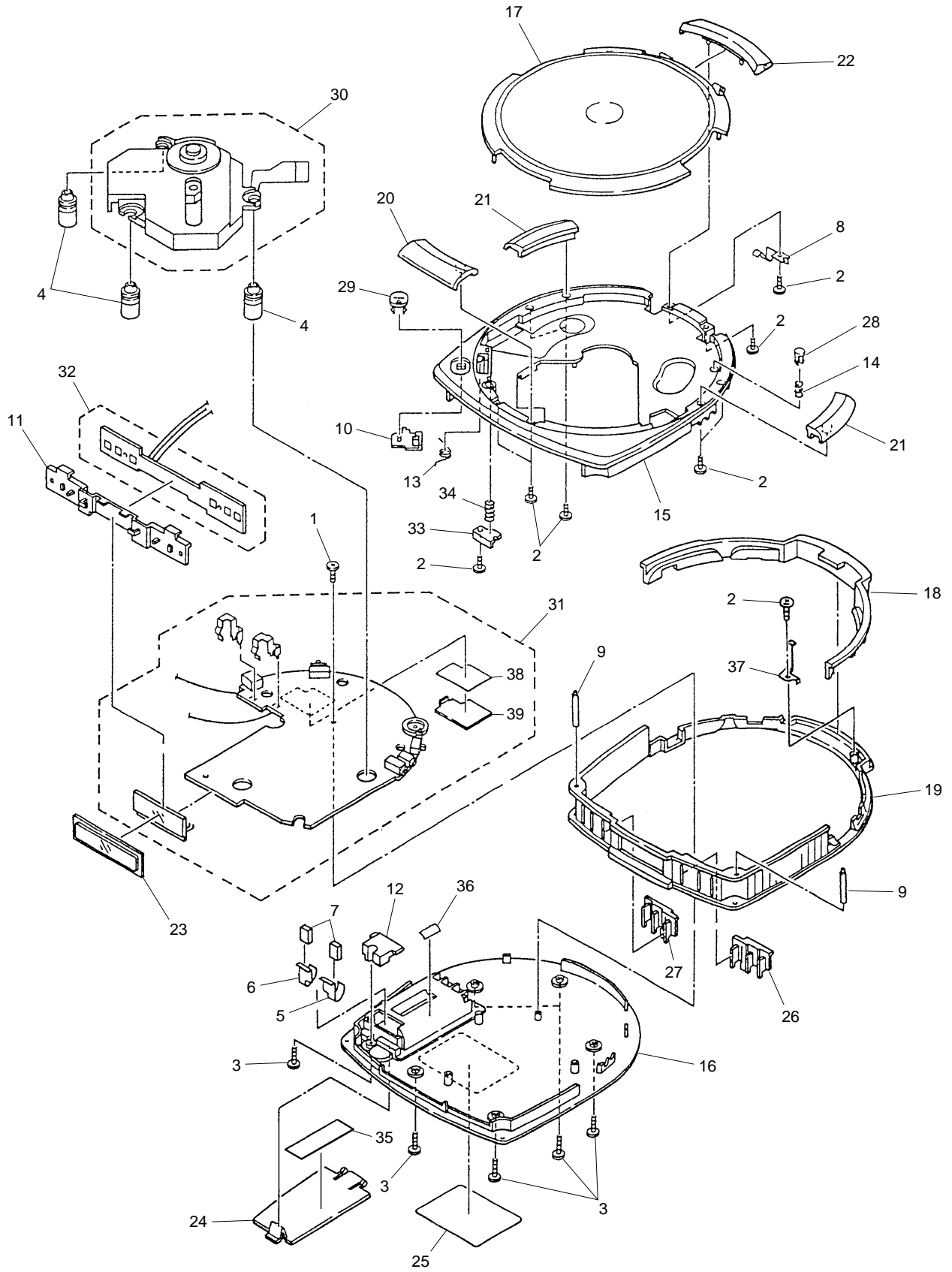
1.1 PACKING



● PACKING PARTS LIST

Mark	No.	Symbol and Description	Part No.			Remarks
			PCD-012	PCD-024	PCD-025	
			ZBXTL type	ZBXLT type	ZBXLT type	
NSP	1	Battery (LR6, AA)	AEX1007	AEX1007	AEX1007	
	2	Innerphone with remote	PZP1007	PZP1007	PZP1007	
	3	Blister Package	2575902001	2575902001	2575902001	
	4	Blister Package C	2575904001	2575904001	2575904001	
	5	Package Board	2575906013	2575906013	2575906013	
	6	Package Box	2575916009	2575916009	2575916009	
	7	Operating Instructions (English/ Chinese)	2575920106	2575920106	2575920106	
	8	Information Sheet	2575851059	2575851058	2575851063	
	9	BT Caution Label	2575855000	2575855000	2575855000	

1.2 EXTERIOR (PCD-012)

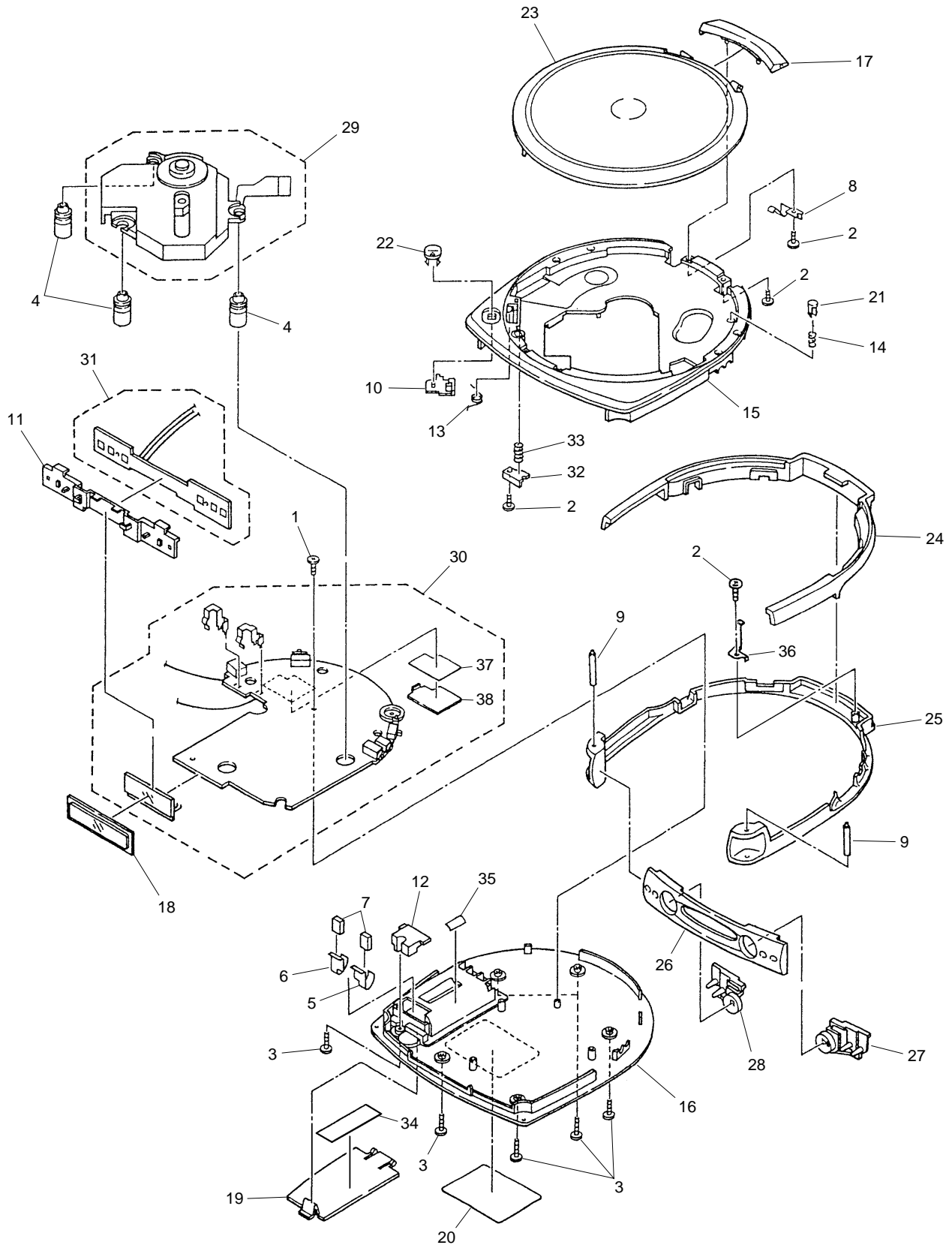


PCD-012, PCD-024, PCD-025

● EXTERIOR (PCD-012) PARTS LIST

Mark	No.	Description	Part No.	Mark	No.	Description	Part No.
	1	Screw	0974354408		21	Ring Ornament	2575812005
	2	Screw	0977020053		22	Hinge Cover	2575813012
	3	Screw	0977020103		23	LCD Window	2575815002
	4	Rubber Cushion	2528300000		24	Battery Cover	2575816012
	5	Battery Terminal A1	2569184100		25	Rear Label	2575850058
	6	Battery Terminal A2	2569185100		26	Tact Knob R	2575860005
	7	Cushion 2	2569868000		27	Tact Knob L	2575861005
	8	Plate Spring	2575180100		28	Detection Knob	2575865010
	9	Shaft	2575201000		29	Open Knob	2575866012
	10	Lock Lever	2575270000		30	CD MECHA UNIT	2597050000
	11	LCD Holder	2575271000		31	CD AMP UNIT	2575004000
	12	Terminal Holder	2575272000		32	CD SW UNIT	2575005000
	13	Open Spring	2575401000		33	Plate Up	2575273010
	14	Com Spring	2575402000		34	Com Spring Up	2575403000
	15	Case	2575801012		35	BT Caution Label	2575855000
	16	Case B	2575803012	NSP	36	Double Face	2570880000
	17	CD Door	2575805105		37	Hold Plate	2575181000
	18	Ring U	2575807005		38	Insulation Sheet 2	2569886000
	19	Ring B	2575808005		39	Heat Sink	2569133000
	20	Ring Front	2575811005				

1.3 EXTERIOR (PCD-024, PCD-025)



PCD-012, PCD-024, PCD-025

(1) EXTERIOR (PCD-024,PCD-025) PARTS LIST

Mark No.	Description	Part No.	Mark No.	Description	Part No.
1	Screw	0974354408	21	Detection Knob	See Contrast table (2)
2	Screw	0977020053	22	Open Knob	See Contrast table (2)
3	Screw	0977020103	23	CD Door	See Contrast table (2)
4	Rubber Cushion	2528300000	24	Ring U	See Contrast table (2)
5	Battery Terminal A1	2569184100	25	Ring B	See Contrast table (2)
6	Battery Terminal A2	2569185100	26	Front Panel	See Contrast table (2)
7	Cushion 2	2569868000	27	Tact Knob R	See Contrast table (2)
8	Plate Spring	2575180100	28	Tact Knob L	See Contrast table (2)
9	Shaft	2575201000	29	CD MECHA UNIT	2597050000
10	Lock Lever	2575270000	30	CD AMP UNIT	2575004000
11	LCD Holder	2575271000	31	CD SW UNIT	2575005000
12	Terminal Holder	2575272000	32	Plate Up	See Contrast table (2)
13	Open Spring	2575401000	33	Com Spring Up	2575403000
14	Com Spring	2575402000	34	BT Caution Label	2575855000
15	Case	See Contrast table (2)	NSP 35	Double Face	2570880000
16	Case B	See Contrast table (2)	36	Hold Plate	2575181000
17	Hinge Cover	See Contrast table (2)	37	Insulation Sheet 2	2569886000
18	LCD Window	2575815002	38	Heat Sink	2569133000
19	Battery Cover	See Contrast table (2)			
20	Rear Label	See Contrast table (2)			

(2) CONTRAST TABLE

PCD-024 and PCD-025 are constructed the same except for the following:

Mark	No.	Symbol and Description	Part No.		Remarks
			PCD-024 ZBXL type	PCD-025 ZBXL type	
	15	Case	2575801016	2575801017	
	16	Case B	2575803016	2575803017	
	17	Hinge Cover	2575813016	2575813017	
	19	Battery Cover	2575816016	2575816017	
	20	Rear Label	2575850057	2575850062	
	21	Detection Knob	2575865014	2575865015	
	22	Open Knob	2575866016	2575866017	
	23	CD Door	2577806010	2577806011	
	24	Ring U	2577807007	2577807008	
	25	Ring B	2577808007	2577808008	
	26	Front Panel	2577810010	2577810011	
	27	Tact Knob R	2577860010	2577860011	
	28	Tact Knob L	2577861010	2577861011	
	32	Plate Up	2575273014	2575273015	