

**Pioneer**

# Service Manual

ORDER NO.  
RRV2267

FILE-TYPE COMPACT DISC PLAYER

# PD-F1039

THIS MANUAL IS APPLICABLE TO THE FOLLOWING MODEL(S) AND TYPE(S).

Type	Model	Power Requirement	Remarks
	PD-F1039		
KU/CA	○	AC 120V	

● This service manual should be used together with the following manual(s):

Model No.	Order No.	Remarks
PD-F1009/KU/CA	RRV2262	

## CONTENTS

1. CONTRAST OF MISCELLANEOUS PARTS ..... 2
2. SCHEMATIC DIAGRAM ..... 7
3. PCB CONNECTION DIAGRAM ..... 12

# 1. CONTRAST OF MISCELLANEOUS PARTS

- NOTES :
- Parts marked by “NSP” are generally unavailable because they are not in our Master Spare Parts List.
  - The  $\triangle$  mark found on some component parts indicates the importance of the safety factor of the part. Therefore, when replacing, be sure to use parts of identical designation.
  - Reference Nos. indicate the pages and Nos. in the service manual for the base model.
  - When ordering resistors, first convert resistance values into code form as shown in the following examples.
- Ex. 1 When there are 2 effective digits (any digit apart from 0), such as 560 ohm and 47k ohm (tolerance is shown by J = 5%, and K = 10%).
- 560  $\Omega$   $\rightarrow$  56  $\times$  10<sup>1</sup>  $\rightarrow$  561 ..... RD1/4PU 5 6 1 J  
 47k  $\Omega$   $\rightarrow$  47  $\times$  10<sup>3</sup>  $\rightarrow$  473 ..... RD1/4PU 4 7 3 J  
 0.5  $\Omega$   $\rightarrow$  R50 ..... RN2H R 5 0 K  
 1  $\Omega$   $\rightarrow$  1R0 ..... RS1P 1 R 0 K
- Ex. 2 When there are 3 effective digits (such as in high precision metal film resistors).
- 5.62k  $\Omega$   $\rightarrow$  562  $\times$  10<sup>1</sup>  $\rightarrow$  5621 ..... RN1/4PC 5 6 2 1 F

## ■ CONTRAST TABLE

PD-F1039/KU/CA and PD-F1009/KU/CA are constructed the same except for the following:

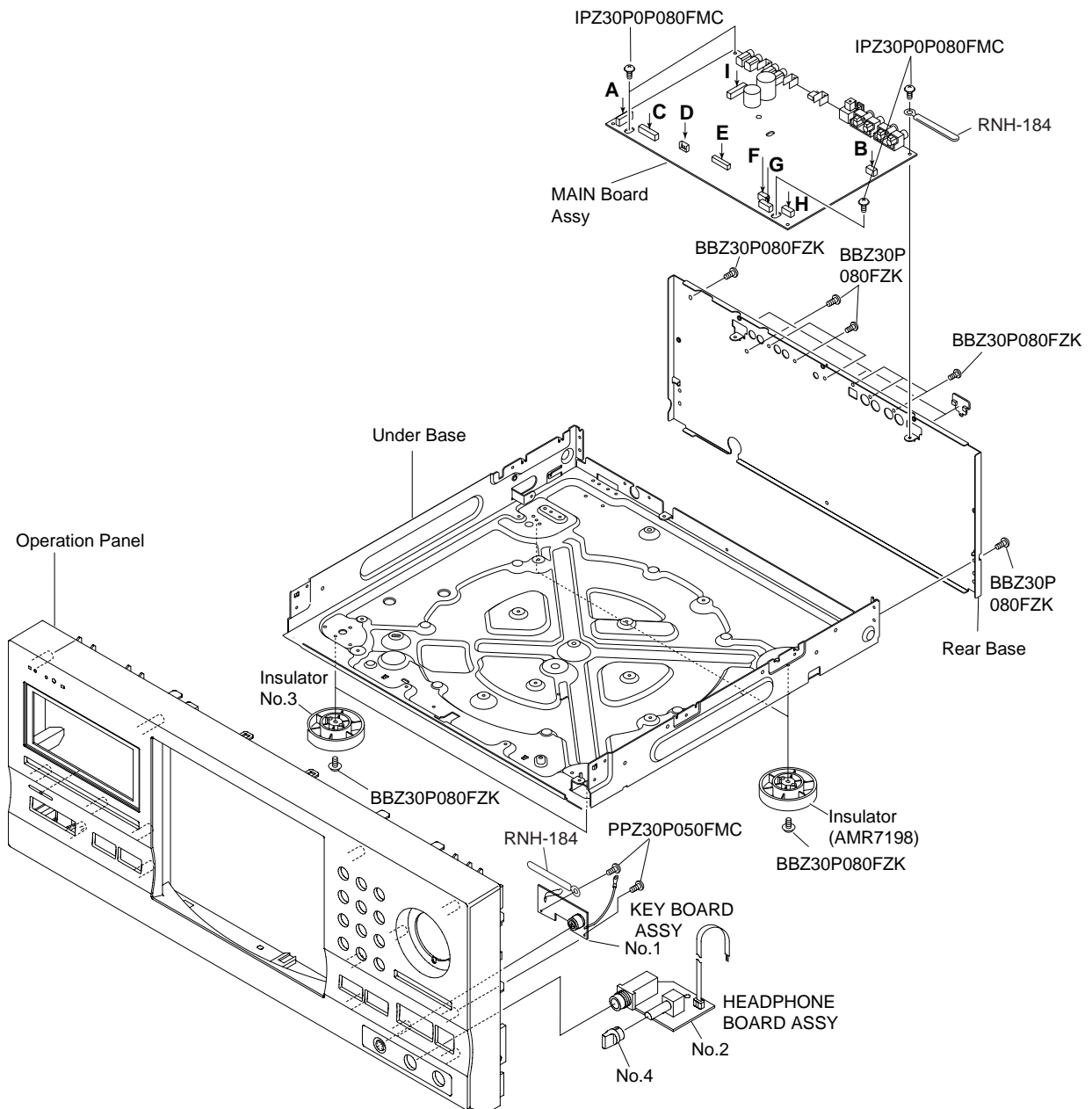
Ref. No.	Mark	Symbol and Description	Part No.		Remarks	
			PD-F1009 /KU/CA	PD-F1039 /KU/CA		
<b>PCB ASSEMBLIES</b>						
$\triangle$ P7-1	NSP	MOTHER BOARD ASSY	PWM2294	PWM2261	No.1	
		├─ MAIN BOARD ASSY	PWZ4036	PWZ3831		
		├─ KEY BOARD ASSY	Not used	PWZ3837		
		├─ SR BOARD ASSY	PWZ4042	Not used		
P7- 2		├─ POWER BOARD ASSY	PWZ4048	Not used		
P7-27	NSP	├─ DOOR MOTOR BOARD ASSY	PWZ4061	Not used		
P7-28	NSP	├─ DOOR SW BOARD ASSY	PWZ4062	Not used		
P9 -7	NSP	├─ VOLUME BOARD ASSY	PWZ4063	Not used		
P13-1		├─ DISPLAY BOARD ASSY	PWZ4053	Not used		
P13-2		├─ CONTROL BOARD ASSY	PWZ4057	Not used		
$\triangle$ P7- 2	NSP	SUB BOARD ASSY	Not used	PWX1581	No.2	
		├─ POWER BOARD ASSY	Not used	PWZ3856		
P7-27	NSP	├─ DOOR MOTOR BOARD ASSY	Not used	PWZ3863		
P7-28	NSP	├─ DOOR SW BOARD ASSY	Not used	PWZ3865		
P9 -7	NSP	├─ VOLUME BOARD ASSY	Not used	PWZ3864		
P13-1		├─ DISPLAY BOARD ASSY	Not used	PWZ3843		
P13-2		├─ CONTROL BOARD ASSY	Not used	PWZ3849		
	NSP	├─ HEADPHONE BOARD ASSY	Not used	PWZ3861		
<b>PACKING</b>						
P5- 3		Packing Case	PHG2397	PHG2400		
P5- 6		Operating Instructions(English)	PRB1300	PRB1301		
P5- 7		Remote Control Unit	PWW1168	PWW1139		
<b>EXTERIOR</b>						
P7- 9		Rear Base	PNA2529	PNA2532	No.3	
		Insulator	Not used	PPW2766		
<b>FRONT PANEL SECTION</b>						
P13- 4		26P F. F.C / 60V	ADD7118	Not used		
P13- 4		18P. F.F.C / 60V	Not used	PDD1188		
P13- 5		MODE Button	PAC1994	PAC1880		
P13- 6		PLAY Button	PAC1995	PAN1881		

Ref. No.	Mark	Symbol and Description	Part No.		Remarks
			PD-F1009 /KU/CA	PD-F1039 /KU/CA	
P13-10		Display Window	PAM1816	PAM1782	No.4
P13-16		Operation Panel	PNW2958	PNW2960	
P13-21		16P. F.F.C / 60V	PDD1203	Not used	
P13-24		Rubber Sheet Rotary Knob	AEB1111 Not used	Not used RAC1903	

- The numbers in the remarks column correspond to the numbers on the "EXPLODED VIEWS".
- For PCB ASSEMBLIES, Refer to "CONTRAST OF PCB ASSEMBLIES", "PCB PARTS LIST", "2.SCHEMATIC DIAGRAM" and "3. PCB CONNECTION DIAGRAM".

## ■ EXPLODED VIEWS

### ● EXTERIOR SECTION



■ CONTRAST OF PCB ASSEMBLIES

**K**F DISPLAY BOARD ASSY

PWZ3843 and PWZ4053 are constructed the same except for the following:

Mark	Symbol and Description	Part No.		Remarks
		PWZ4053	PWZ3843	
	IC701 IC721 Q702- Q705 D706, D707 C703	PE5132B S-806E Not used 1SS133 CKSQYF103Z50	PE5134A Not used DTC124ES Not used CKCYF103Z50	
	C704, C705 C706 C707 C708 C710, C711	CKSQYF103Z50 Not used CKSQYF103Z50 Not used Not used	CKPUYF103Z25 CEAL100M50 CKPUYF104Z50 CKPUYF104Z50 CEAT100M50	
	C721 C722 R701 R702- R704 R705	CEAL101M6R3 CKSQYF104Z25 RS1/10S471J RS1/10S471J Not used	Not used Not used RD1/4PU471J RD1/4PU124J RD1/4PU124J	
	R706, R707 R708, R709 R710 R711 R712- R718, R721	RS1/10S473J Not used RS1/10S0R0J RS1/10S562J RS1/10S473J	RD1/4PU103J RD1/4PU471J Not used Not used Not used	
	R751 R1701 R1702- R1706 R1707 CN701	RS1/10S471J RS1/10S103J RS1/10S103J Not used HLEM26R-1	RD1/4PU331J Not used RD1/4PU103J RD1/4PU103J HLEM18R-1	
	CN702 J702 KN701 V701 FL HOLDER CABLE HLOLDER	HLEM16S-1 Not used Not used PEL1098 VNF1085 Not used	52151-0410 DE010WE0 PNB1595 PEL1096 Not used 51048-1300	

• Refer to "2. SCHEMATIC DIAGRAM".

**M**F POWER BOARD ASSY

PWZ3856 and PWZ4048 are constructed the same except for the following:

Mark	Symbol and Description	Part No.		Remarks
		PWZ4048	PWZ3856	
⚠	IC61	Not used	NJM78M56FA	
⚠	IC71	Not used	BA05T	
⚠	Q62	2SC1815	Not used	
⚠	D71 , D72	Not used	S5688G	
⚠	D11- D14, D52	S5688G	Not used	
	D54	MTZJ18B	Not used	
	D62	MTZJ6.2B	Not used	
	D81	1SS133	Not used	
	D82	MTZJ4.7B	Not used	
	C14, C61	Not used	CKCYF103Z50	

Mark	Symbol and Description	Part No.		Remarks
		PWZ4048	PWZ3856	
⚠	C51, C52	CEAT101M35	Not used	
	C65	CEAT4R7M50	CEAT101M10	
	C66	CKSQYF104Z25	Not used	
	C71	Not used	CEAT332M16	
	C72	Not used	CEHAT101M10	
	C74	CCSQCH101J50	CCCSL101J50	
	C1061	CKSQYF103Z50	Not used	
	R51	RS1/10S223J	Not used	
	R52- R54	RD1/4PU152J	Not used	
	R64	RD1/4PU222J	Not used	
	R71	Not used	RD1/4PU103J	
	R81	RD1/4PU472J	Not used	
	R82	RD1/4PU103J	Not used	
	T1	PTT1318	PTT1348	
	J11	D20PDY1025E	D20PDY0925E	
J71	Not used	D20PDY0315E		
3P CABLE HOLDER	Not used	51048-0300		
CABLE HOLDER	51048-1000	51048-0900		
PCB BINDER	VEF1040	Not used		

• Refer to "2. SCHEMATIC DIAGRAM".

### L CONTROL BOARD ASSY

PWZ3849 and PWZ4057 are constructed the same except for the following:

Mark	Symbol and Description	Part No.		Remarks
		PWZ4057	PWZ3849	
	C751, C752	CKSQYF103Z50	CKPUYF103Z25	

### B DOOR MOTOR BOARD ASSY

PWZ3863 and PWZ4061 are constructed the same except for the following:

Mark	Symbol and Description	Part No.		Remarks
		PWZ4061	PWZ3863	
	J631	D20PDY0445E	D20PDY0445G	

### D DOOR SW BOARD ASSY

Although PWZ3865 and PWZ4062 are different in part number, they consist of the same components.

### O VOLUME BOARD ASSY

Although PWZ3864 and PWZ4063 are different in part number, they consist of the same components.

### PCB PARTS LIST

Mark No.	Description	Part No.	Mark No.	Description	Part No.
----------	-------------	----------	----------	-------------	----------

### Q KEY BOARD ASSY (PWZ3837)

#### SEMICONDUCTORS

D801, D802 DA204K

#### CAPACITORS

C805 CEAL101M6R3  
C801- C804, C806 CKSQYF104Z50

#### RESISTORS

R801- R803, R1803 RS1/10S0R0J

#### OTHERS

J801 4P JUMPER WIRE D20PWY0455E  
J802 LEAD WIRE UNIT PDF1012  
NSP JA801 MIN DIN 6P SOCKET RKN1038

Mark No.	Description	Part No.
<b>R</b>	<b>HEADRHONE BOARD ASSY(PWZ3861)</b>	

**COILS**

L501, L504, L505	LAU1R0J
------------------	---------

**CAPACITORS**

C505	CCCSL101J50
C503	CGCYX473K25
C501, C502	CKCYF103Z50

**RESISTORS**

VR501 (500Ω- B)	PCS1003
-----------------	---------

**OTHERS**

	3P CABLE HOLDER	51048-0300
J501	3P JUMPER WIRE	D20PDY0355E
JA501	HP JACK	RKN1002

**JF MAIN BOARD ASSY (PWZ3831)**

**SEMICONDUCTORS**

IC151	CXA2570N
IC301	CXD2587Q
IC35, IC36	ICP-N10
IC203	LA6517
IC201, IC202	LA6520

IC501	M5218AFP
IC352	M5M51008BFP-70LL
IC431, IC432, IC433	NJM4558MD
IC23	NJM79M05FA
IC351	PDE5133A

IC21	PQ05RR12
IC353	S-806E
IC951	TC74HC157AF
Q151	2SA854S
Q391	2SC1740S

Q361	2SC2412K
Q431, Q432, Q433, Q434, Q435	2SD2144S
Q436	2SD2144S
Q152, Q362, Q438, Q441, Q443	DTA124EK
Q437, Q440, Q442	DTC124EK

D351- D353, D391, D392	1SS133
D395, D958	1SS133
D151	DA204K
D54	MTZJ24B
D11-D14, D52	S5688G

D152	RB501V-40
D218	UDZS6.2B

**COILS AND FILTERS**

L351	LAU100J
------	---------

**CAPACITORS**

C447, C448	CCCSL101J50
C481, C482	CCCSL390J50
C323, C361	CCSQCH101J50
C437, C438	CCSQCH121J50
C311, C312	CCSQCH150J50

C301, C310	CCSQCH221J50
------------	--------------

Mark No.	Description	Part No.
C302		CCSQCH681J50
C27, C29, C157, C317, C319		CEAT101M10
C331, C351, C365		CEAT101M10
C51		CEAT101M35
C52, C153, C155, C156, C304, C315		CEAT101M50

C441-C444	CEAT220M25
C201-C204	CEAT470M16
C309	CEATR47M50
C364	CFTLA104J50
C445, C446	CKCYB102K50

C358	CKCYF473Z50
C231, C233	CKSQYB102K50
C151, C215, C220, C225, C240	CKSQYB103K50
C250, C308	CKSQYB103K50
C230, C260, C303	CKSQYB104K25

C159, C241, C243, C306	CKSQYB152K50
C218	CKSQYB332K50
C232, C234	CKSQYB471K50
C307	CKSQYB473K25
C242, C244	CKSQYB681K50

C212, C214	CKSQYB682K50
C305	CKSQYB822K50
C158, C322, C339, C352, C353	CKSQYF103Z50
C362, C363, C953	CKSQYF103Z50
C28, C154, C205, C206, C314	CKSQYF104Z25

C316, C318, C320, C321, C332	CKSQYF104Z25
C449, C450, C511, C512, C1324	CKSQYF104Z25
C1325	CKSQYF104Z25
C359, C1398, C1951, C1952	CKSQYF473Z50
C354 (0.1F/5.5V)	PCH1133

C25, C26 (4700μF/16V)	PCH1135
-----------------------	---------

**RESISTORS**

R56-R59	RD1/4PU241J
R52-R54	RD1/4PU272J
R471- R476	RD1/4PU332J
R163, R164, R503, R504	RD1/4PU470J
R210, R439- R446	RN1/10SE1002D

R216, R218	RN1/10SE1003D
R457- R460, R481- R484	RN1/10SE2202D
R217	RN1/10SE3602D
R219, R451- R456	RN1/10SE4702D
R437, R438	RN1/10SE5601D

VR155 (10kΩ)	VCP1156
Other Resistors	RS1/10S □□□ J

**OTHERS**

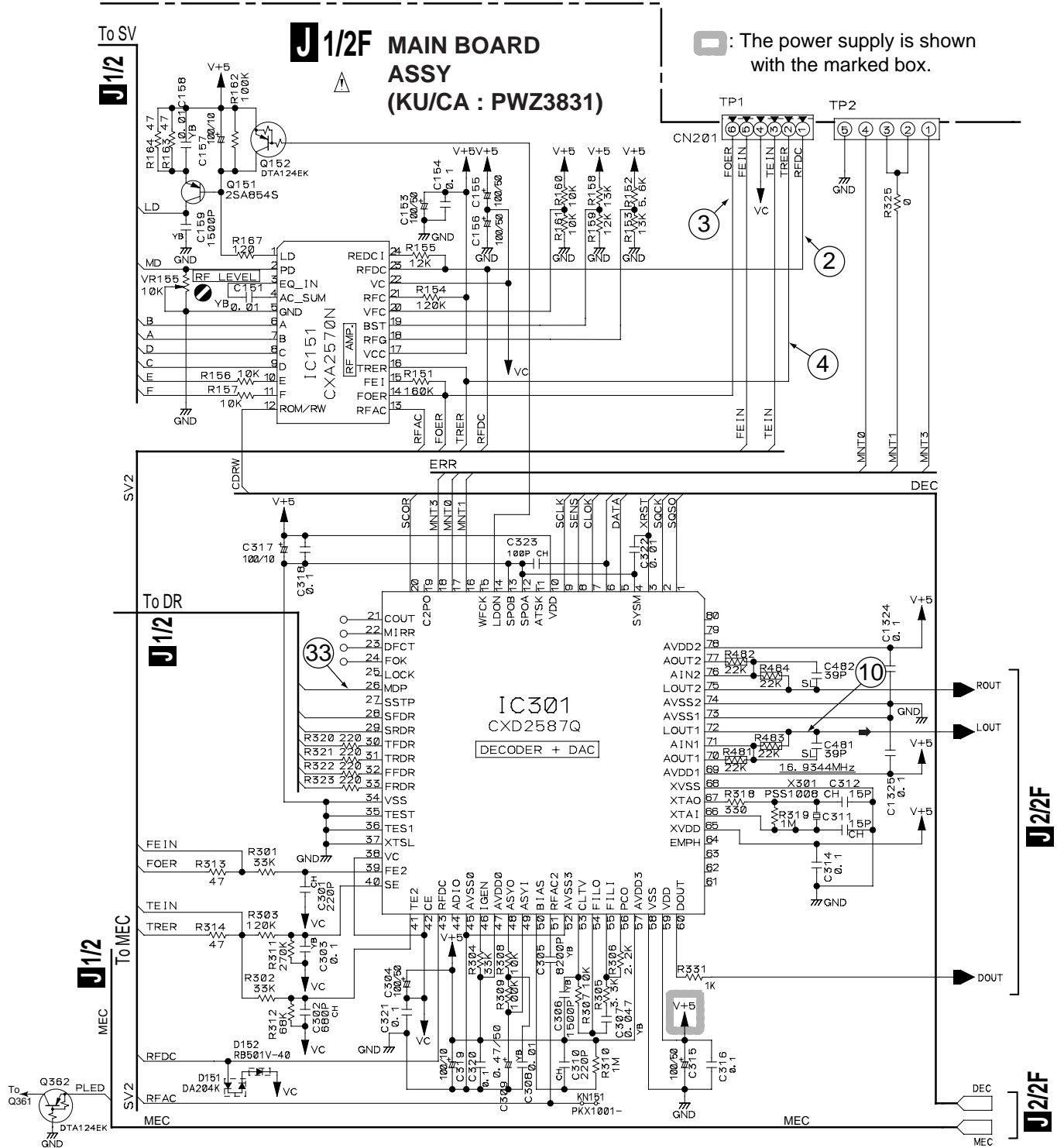
CN207	MT 4P CONNECTOR	173981-4
CN12,CN501	3P JUMPER CONNECTOR	52147-0310
CN205	4P JUMPER CONNECTOR	52147-0410
CN203	5P JUMPER CONNECTOR	52147-0510
CN11,CN204	9P JUMPER CONNECTOR	52147-0910

JA401, JA402	JACK	DKB1031
KN151	JUMPER TERMINAL	PKX1001
CN351	CONNECTOR	HLEM18S-1
JA331	OPTICAL LINK OUT	GP1F32T
JA393	JACK	PKN1005

Mark No.	Description	Part No.	Mark No.	Description	Part No.
J391, J392, J951, J952	REMOTE JACK	RKN1004	X351	CERAMIC RESONATOR	VSS1028
CN201	6P TOP POST	B6P-SHF-1AA		(4.19MHz)	
CN202	CONNECTOR	SLW16S-1C7		PCB BINDER	VEF1040
X301	XTAL. RES. (16.9344MHz)	PSS1008		SCREW PLATE	VNE1948

## 2. SCHEMATIC DIAGRAM

### 2.1 MAIN BOARD ASSY (1/2F)



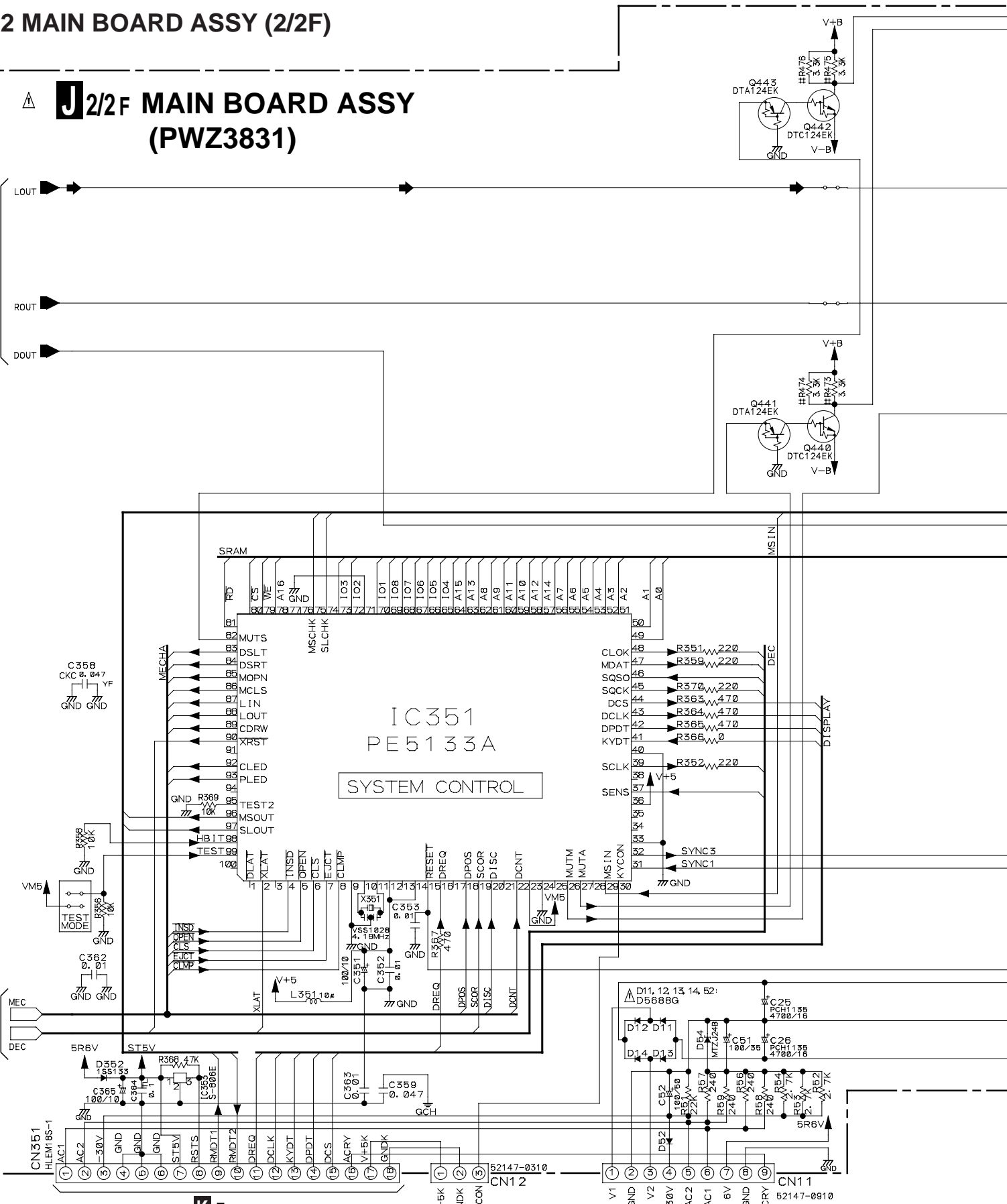
2.2 MAIN BOARD ASSY (2/2F)

J 2/2F MAIN BOARD ASSY (PWZ3831)

J 1/2F

J 1/2F

J 2/2F



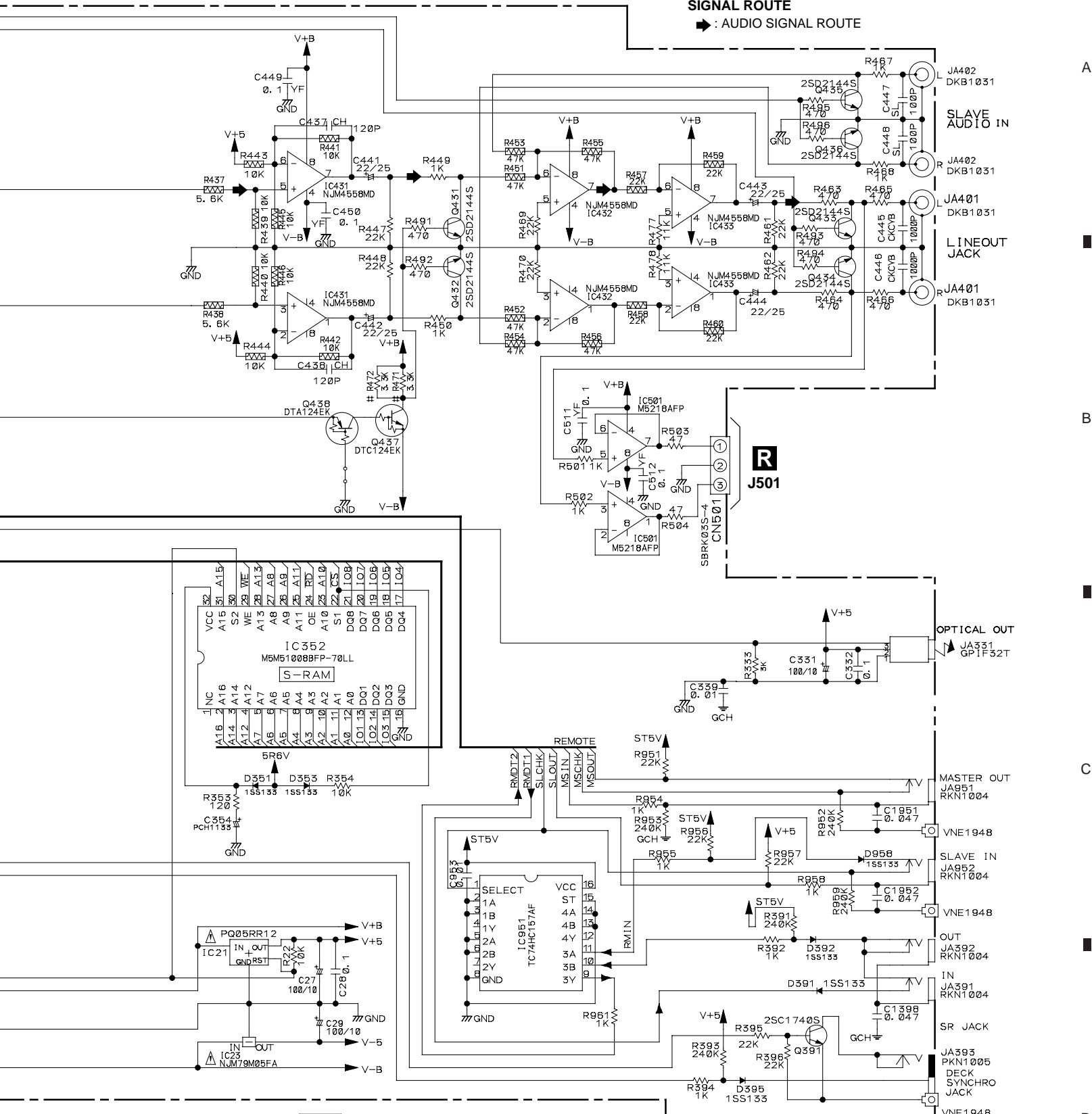
K F CN701

M F J71

M F CN11



SIGNAL ROUTE
AUDIO SIGNAL ROUTE



NOTES

CAPACITORS UNMARKED UNIT: μF
VFB CERAMIC CKSQYB
CH CERAMIC CCK50CH
CVF CERAMIC CCKCYF
SL CERAMIC CCCSL
UNMARKED CERAMIC
TL FILM CKSQYF
CFTLA
MBA FILM CQMBAA
UNMARKED ELECTROLYSIS CEAT

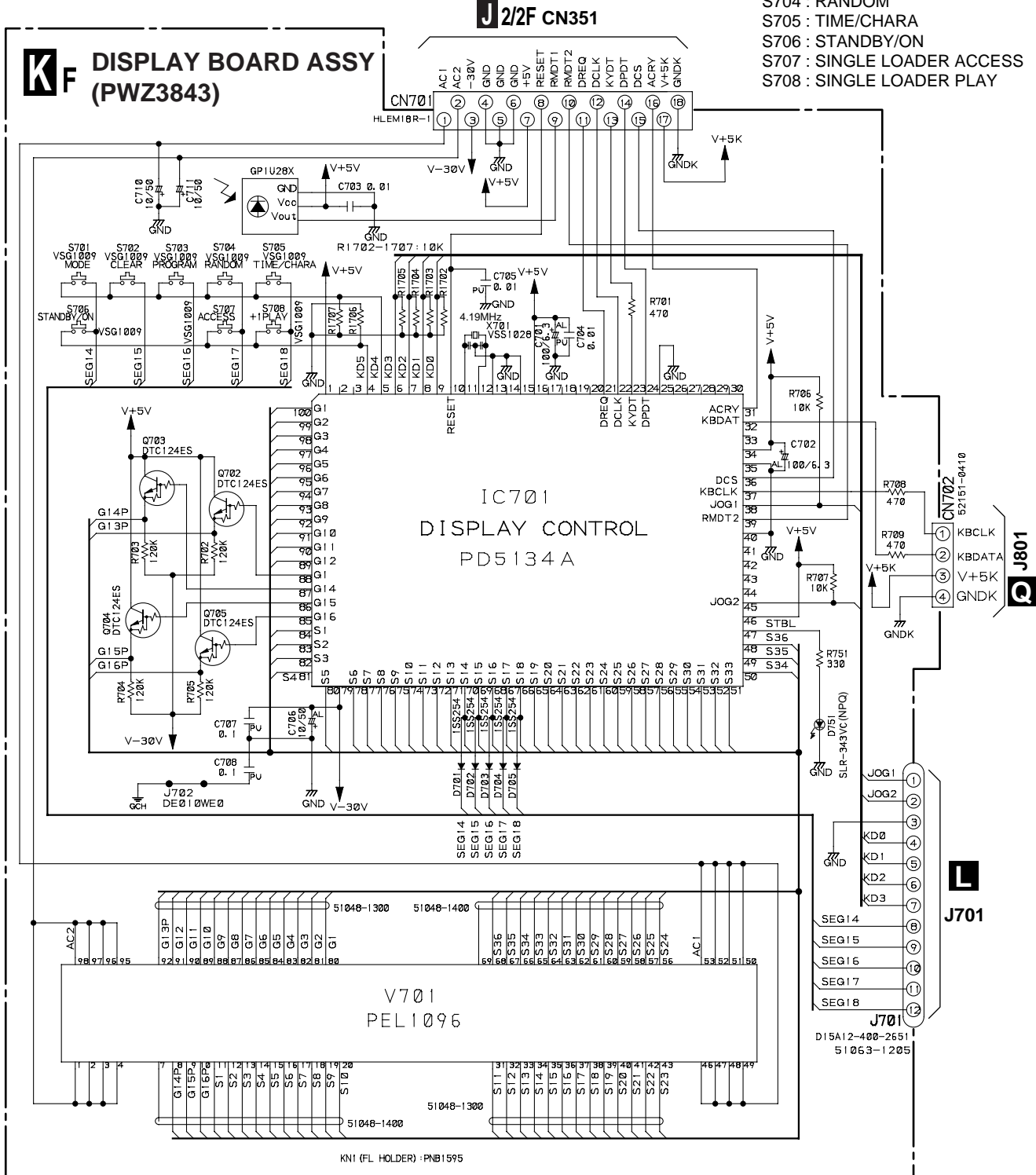
INDUCTORS UNIT: μH
AXIAL TYPE LAU
RESISTORS UNIT: Ω
UNMARKED RS1/10S
RD1/4PU
RN1/10SE

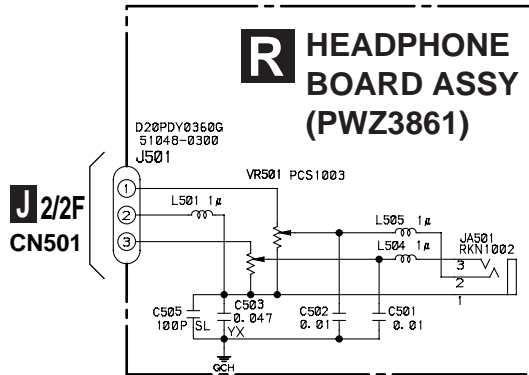
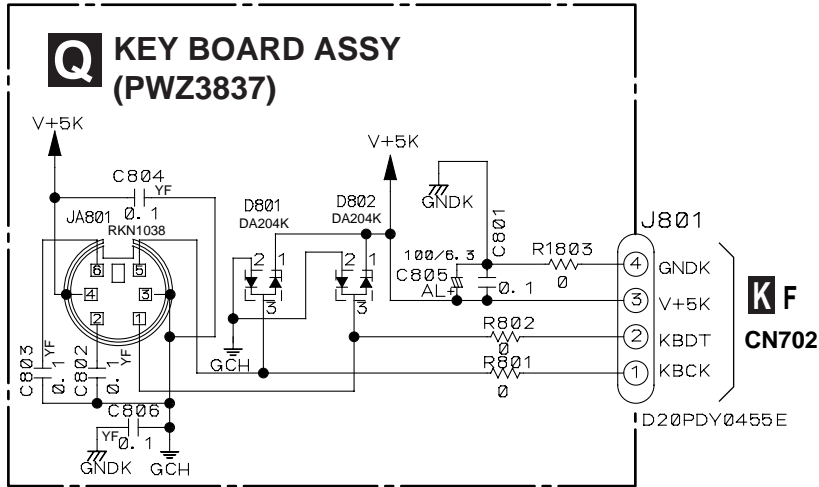
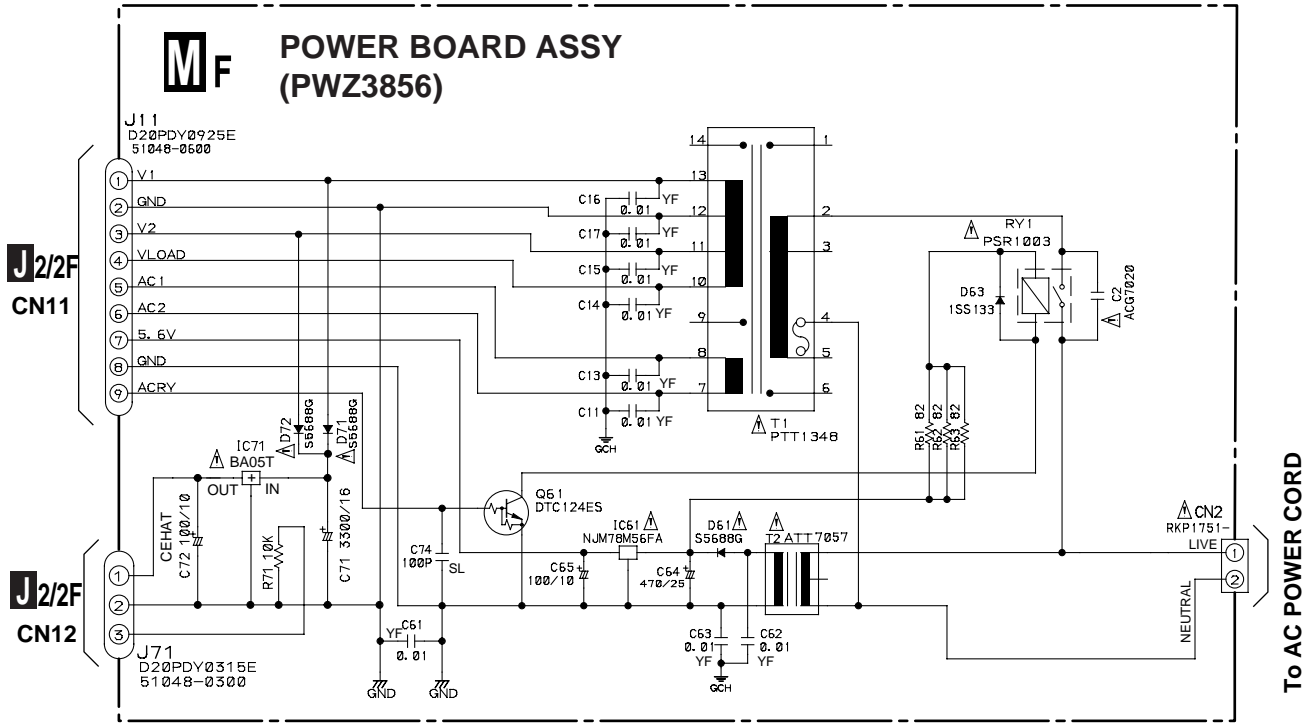


## 2.3 DISPLAY BOARD ASSY, POWER BOARD ASSY, KEY BOARD ASSY and HEADPHONE BOARD ASSY

DISPLAY BOARD ASSY

- S701 : MODE
- S702 : CLEAR
- S703 : PROGRAM
- S704 : RANDOM
- S705 : TIME/CHARA
- S706 : STANDBY/ON
- S707 : SINGLE LOADER ACCESS
- S708 : SINGLE LOADER PLAY







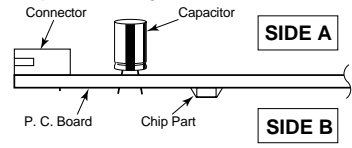
**SIDE A**

**NOTE FOR PCB DIAGRAMS:**

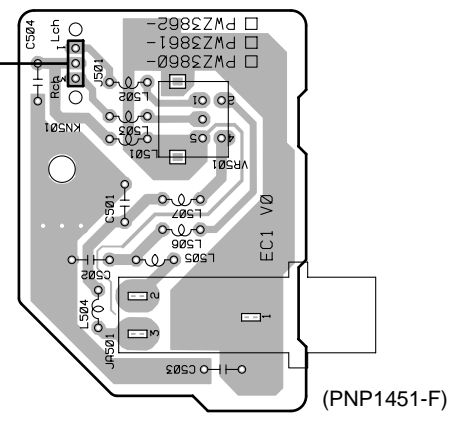
- 1. Part numbers in PCB diagrams match those in the schematic diagrams.
- 2. A comparison between the main parts of PCB and schematic diagrams is shown below.

Symbol in PCB Diagrams	Symbol in Schematic Diagrams	Part Name
		Transistor
		Transistor with resistor
		Field effect transistor
		Resistor array
		3-terminal regulator

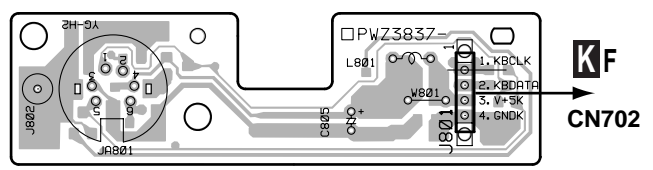
- 3. The parts mounted on this PCB include all necessary parts for several destination. For further information for respective destinations, be sure to check with the schematic diagram.
- 4. Viewpoint of PCB diagrams



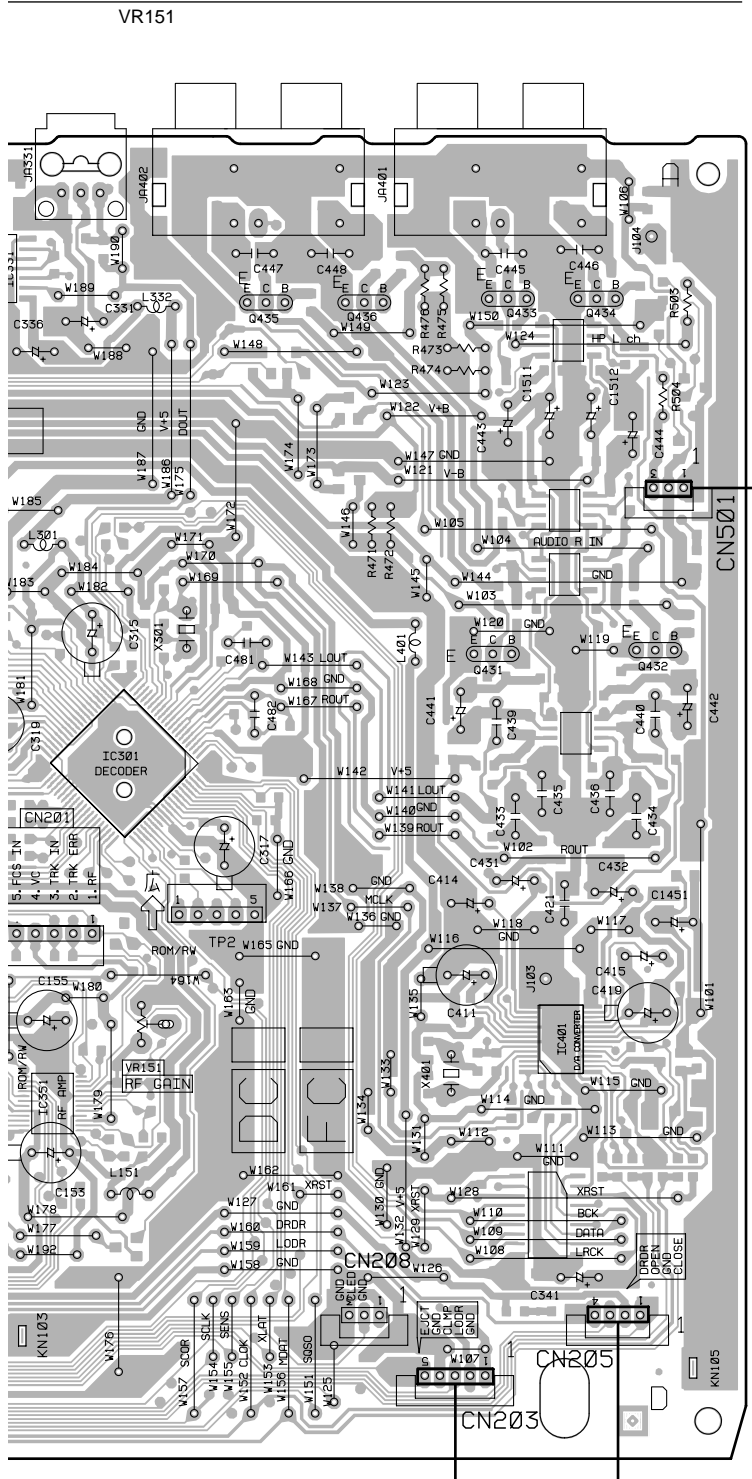
**R HEADPHONE BOARD ASSY**



**Q KEY BOARD ASSY**



(PNP1468-B)



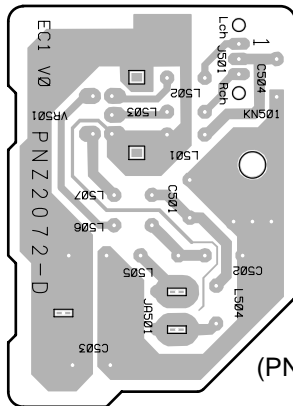
**E** J651      **B** J631

**J** F MAIN BOARD ASSY

Q470	IC501								
Q471	IC433								
Q432	IC432								
Q439	IC401	Q433	Q436	Q435	IC301				
	Q434	IC341	Q431	Q437 Q440 Q442	Q152	IC151	IC		

**R** HEADPHONE BOARD ASSY

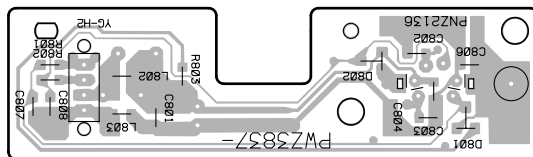
**SIDE B**



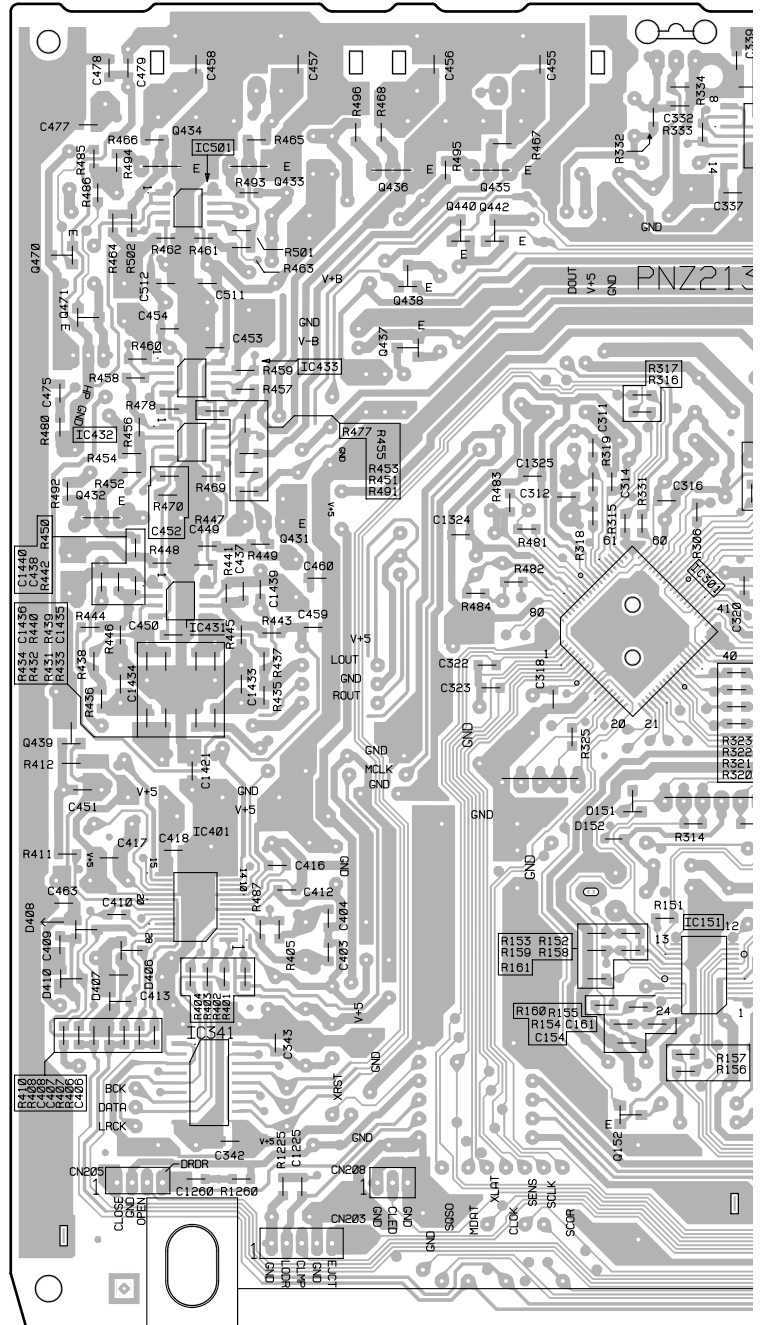
(PNP1451-F)

**Q** KEY BOARD ASSY

**SIDE B**

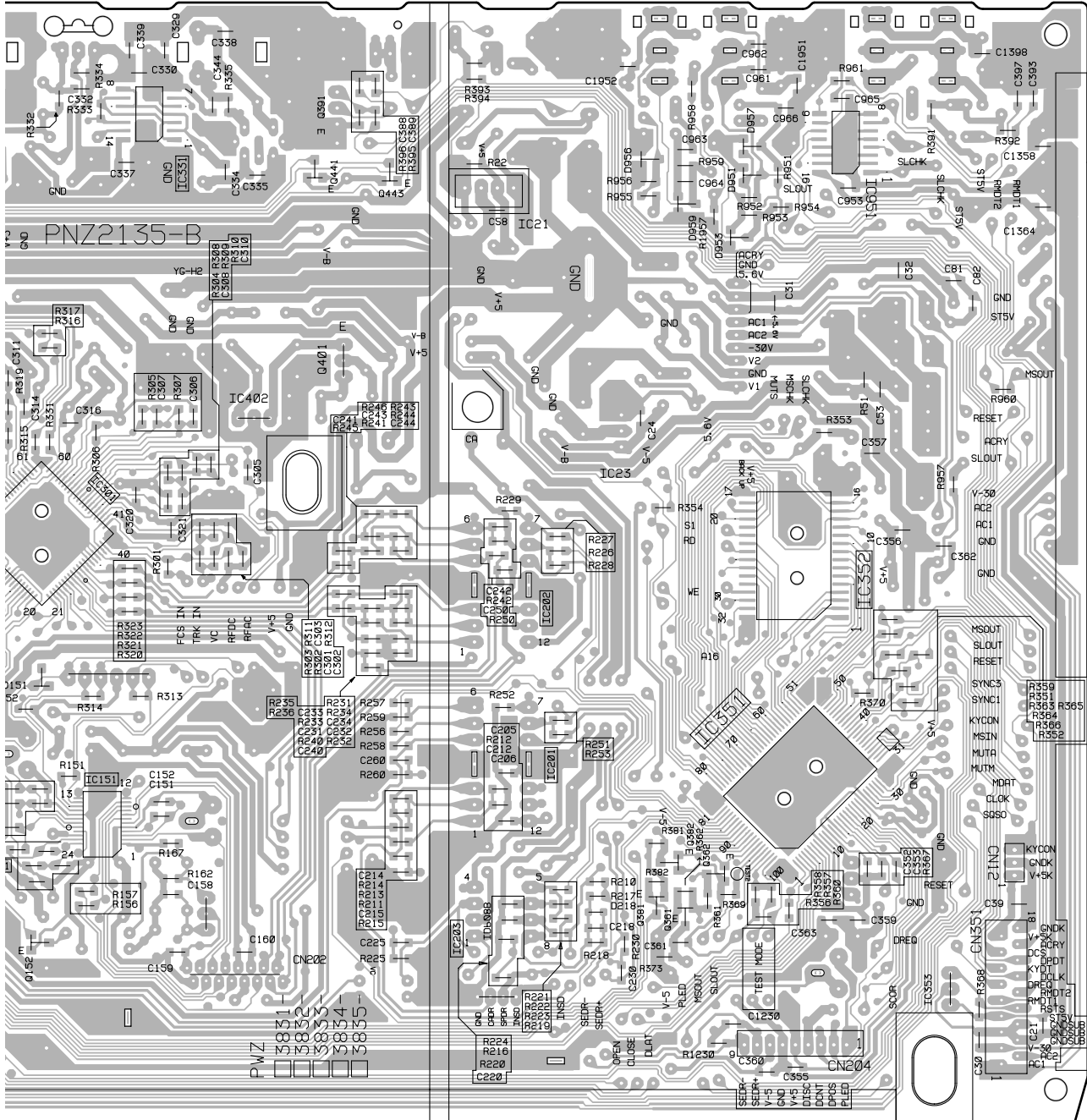


(PNP1468-B)



SIDE B

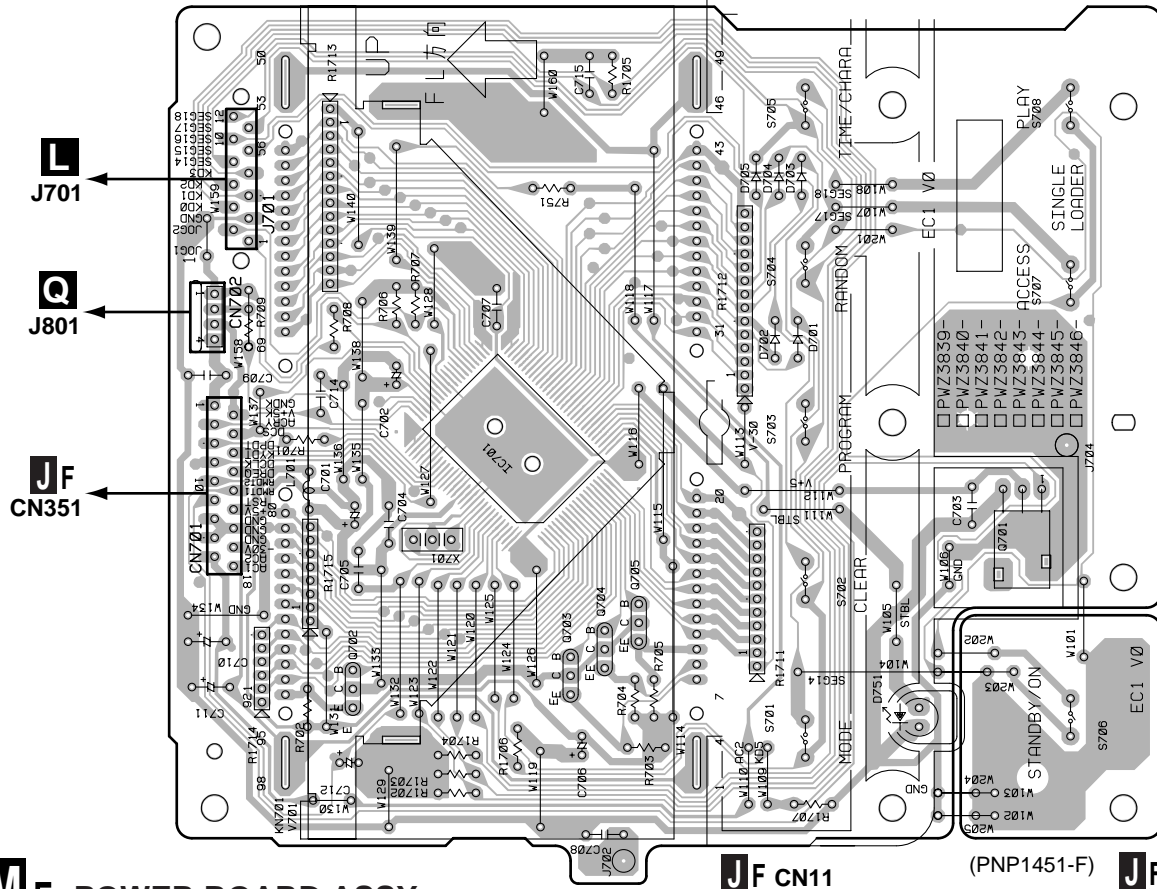
IC301	IC151	IC331	IC402	Q441	Q401	Q433	IC21	IC202	IC201	IC203	Q382	Q362	IC352	IC351	IC951	IC353
Q152											IC23	Q381	Q361			



### 3.2 DISPLAY and POWER BOARD ASSYS

#### **K**F DISPLAY BOARD ASSY

**SIDE A**



#### **M**F POWER BOARD ASSY

**J**F CN11 (PNP1451-F) **J**F CN12

