

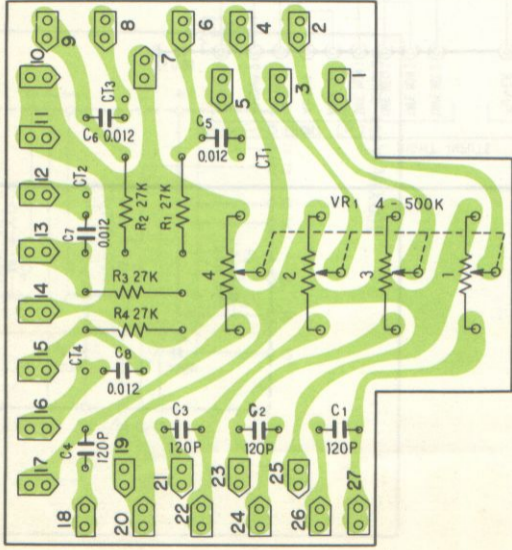


QUADRAPHONIC AMPLIFIER

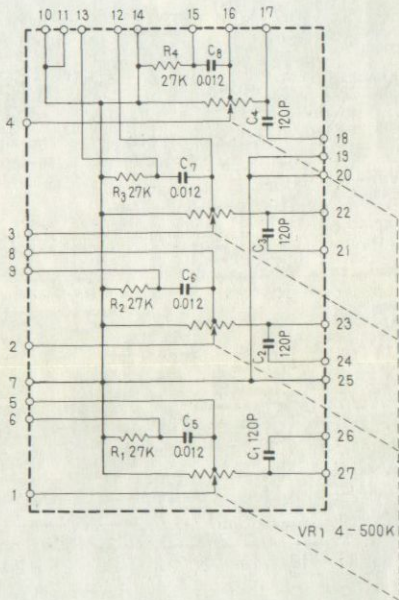
**QA-800A**

**FVW KLW**

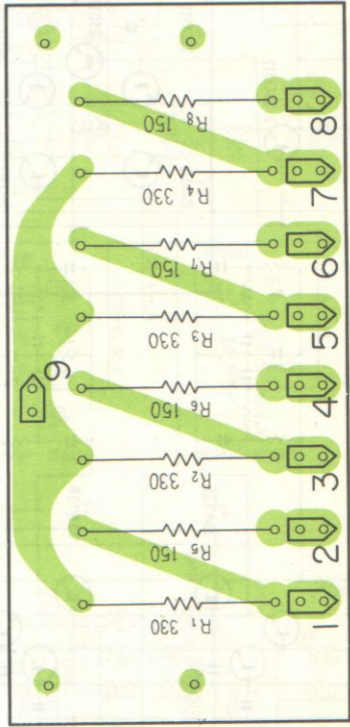
# Volume ass'y AWX-001



# Volume ass'y AWX-001

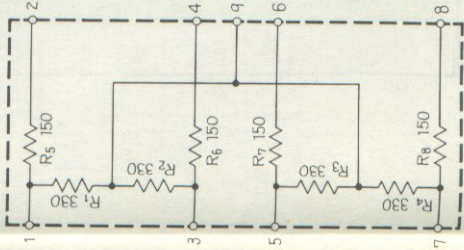


# R ass'y AWX-005

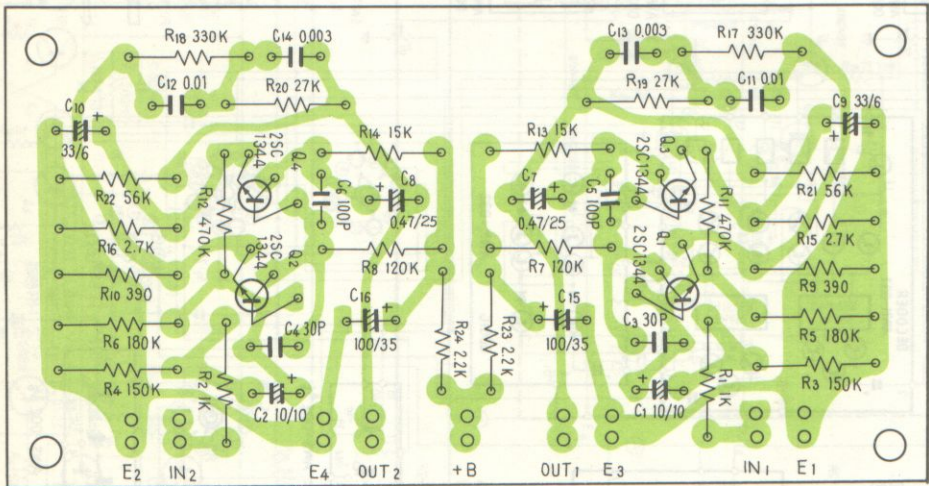


545 1345 826 173

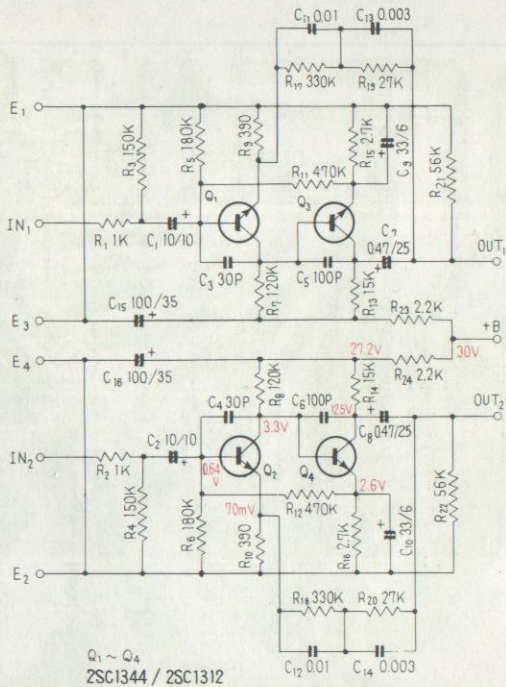
R ass'y AWX-005



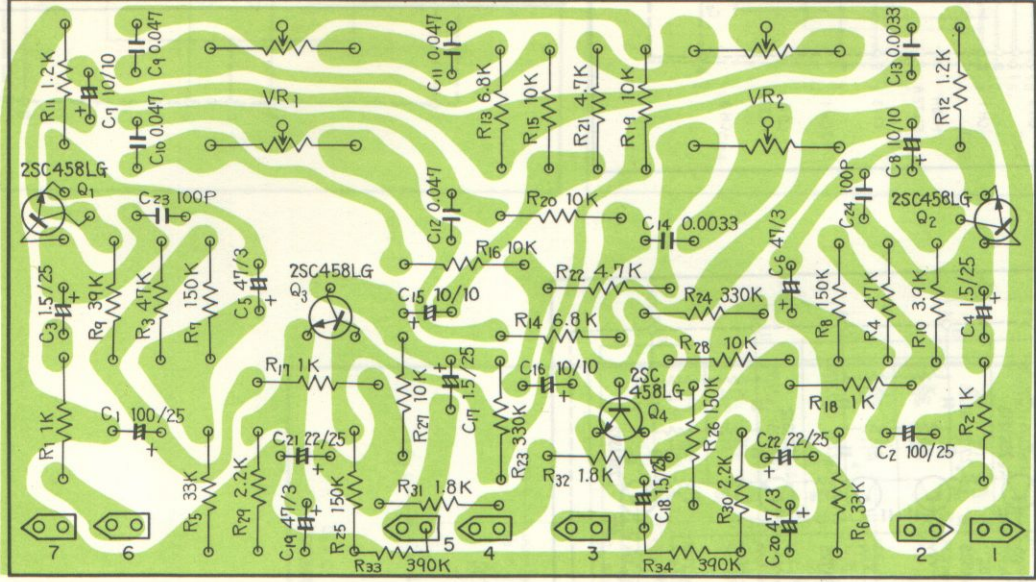
Head amp ass'y W15-032



# Head amp ass'y W15-032

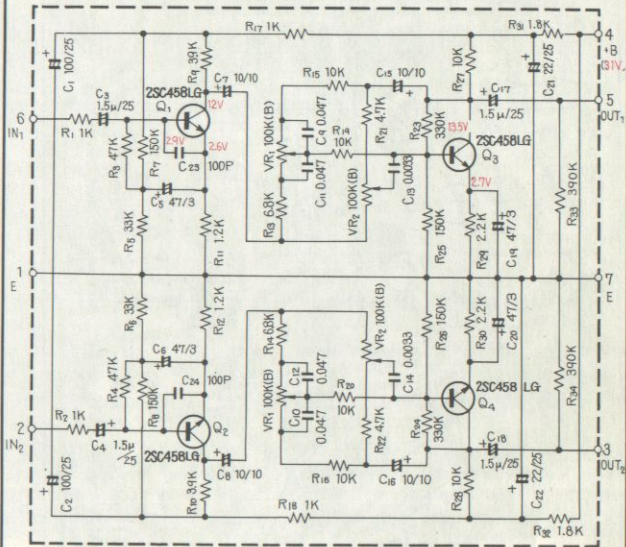


# Control amp ass'y AWG-001

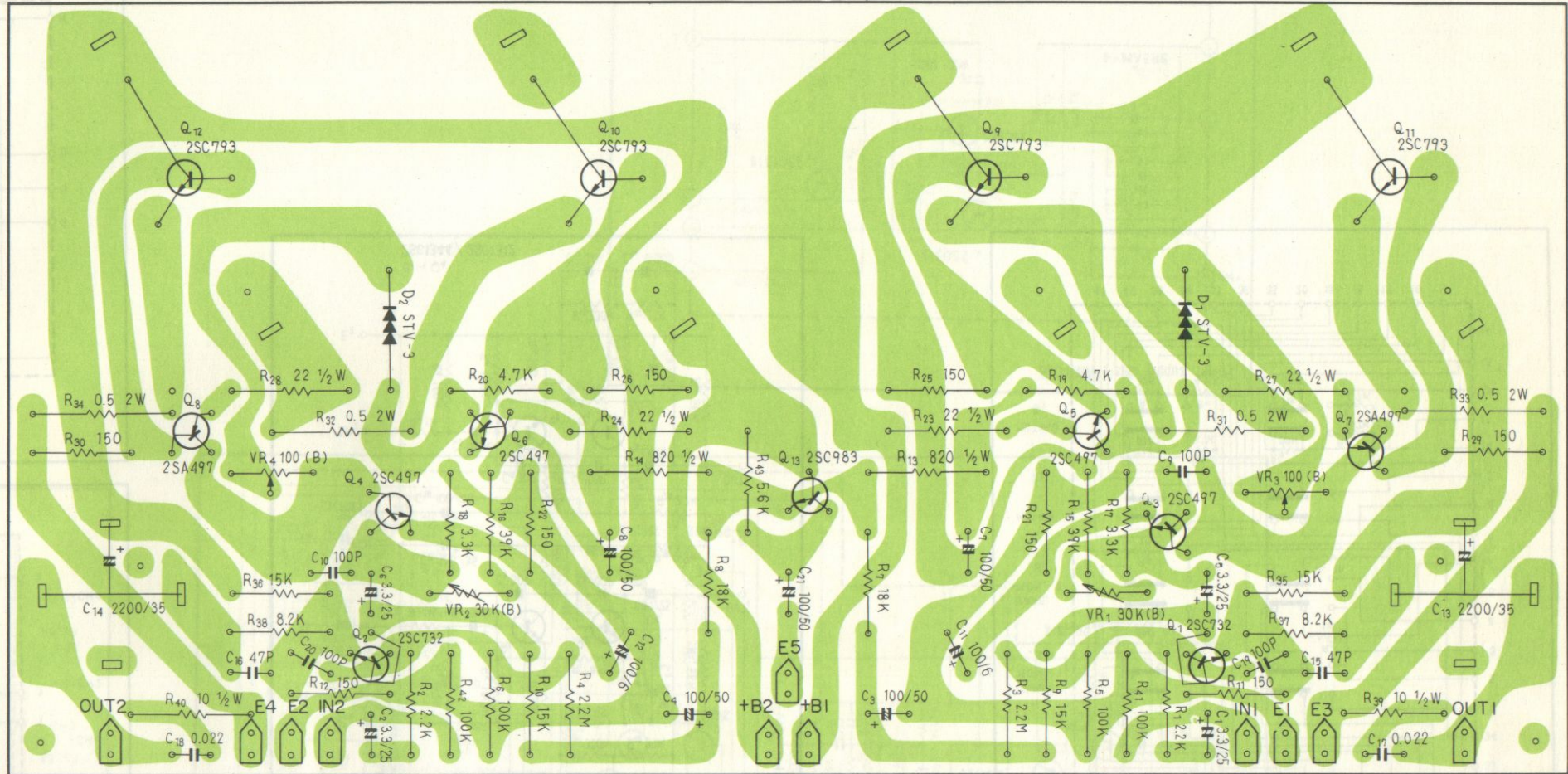




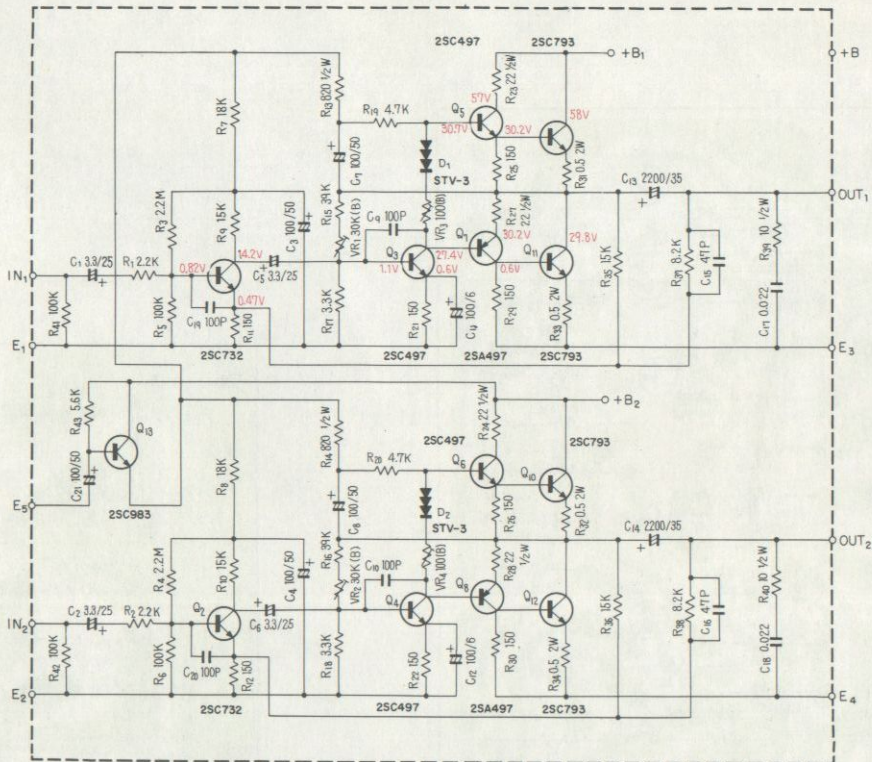
# Control amp ass'y AWG-001



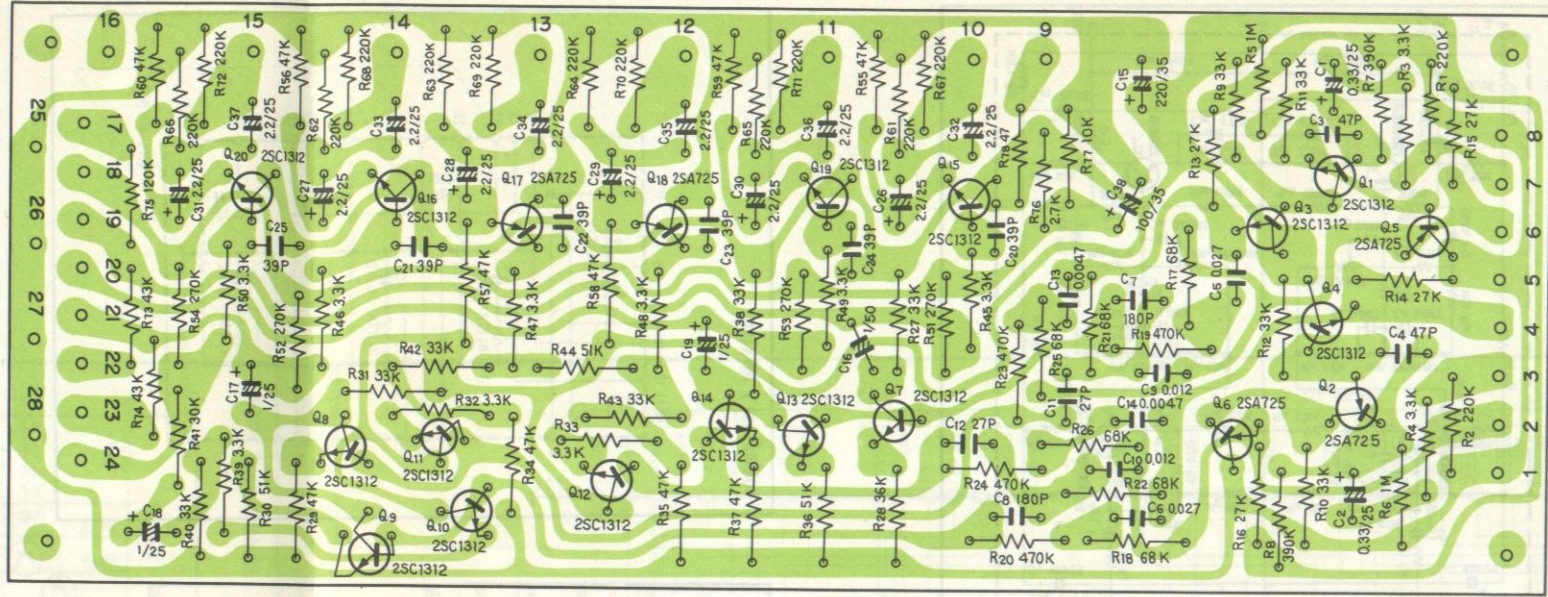
Main amp ass'y AWH-002



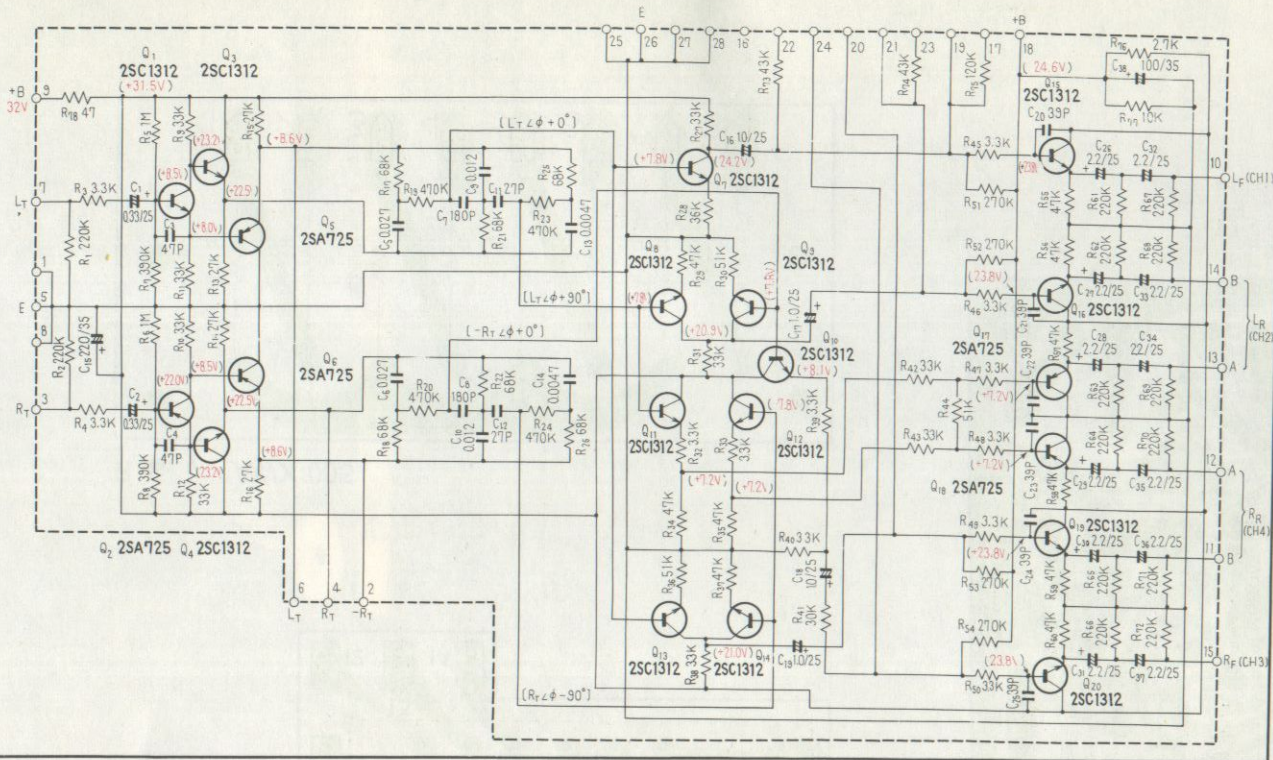
# Main amp ass'y AWH-002



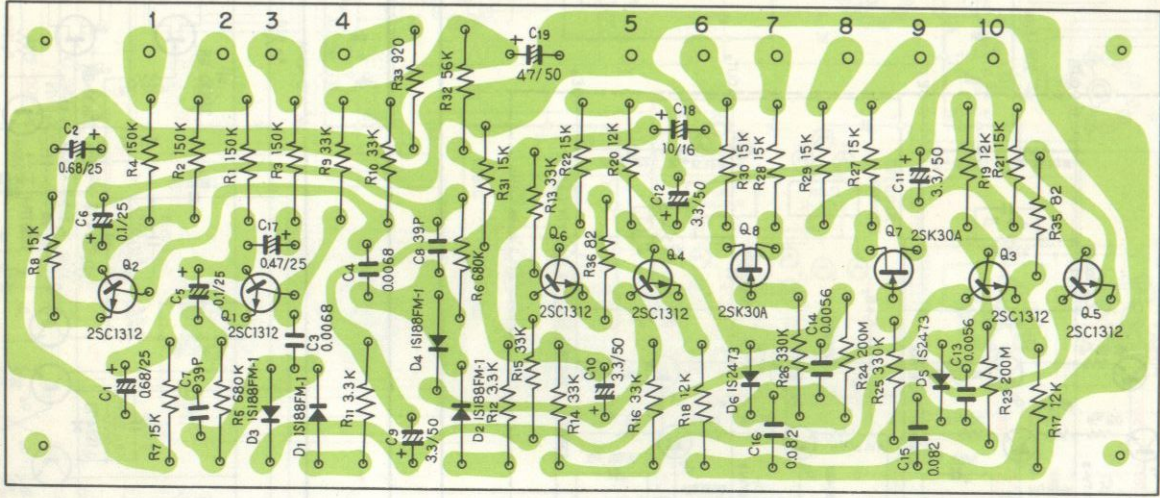
# Decoder ass'y AWM-031



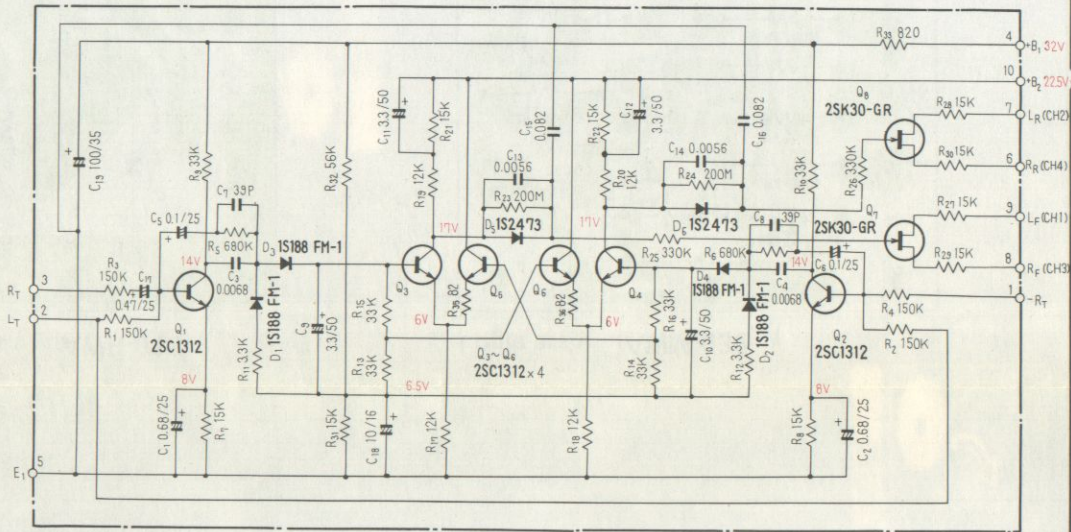
Decoder ass'y AWM-031



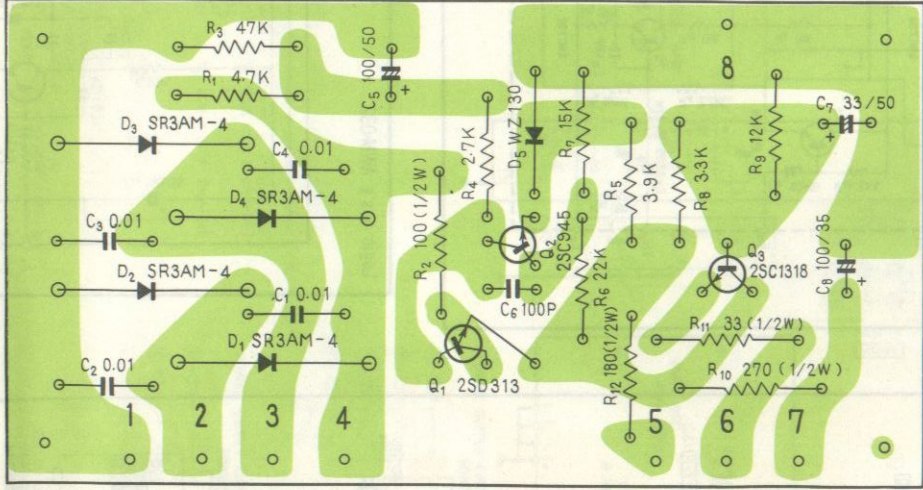
# Logic ass'y AWM-032



Logic ass'y AWM-032

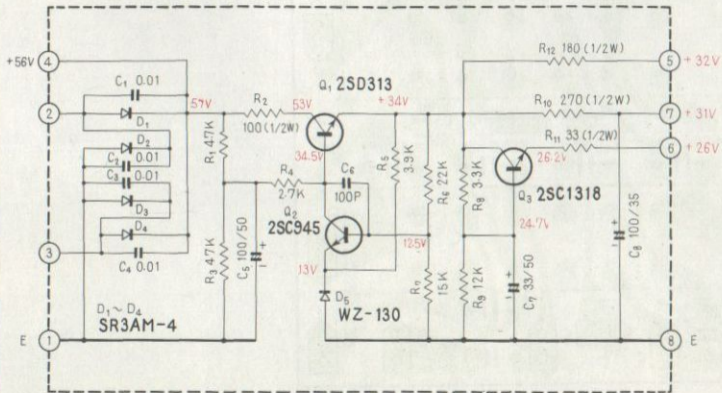


# Power supply ass'y AWR-018

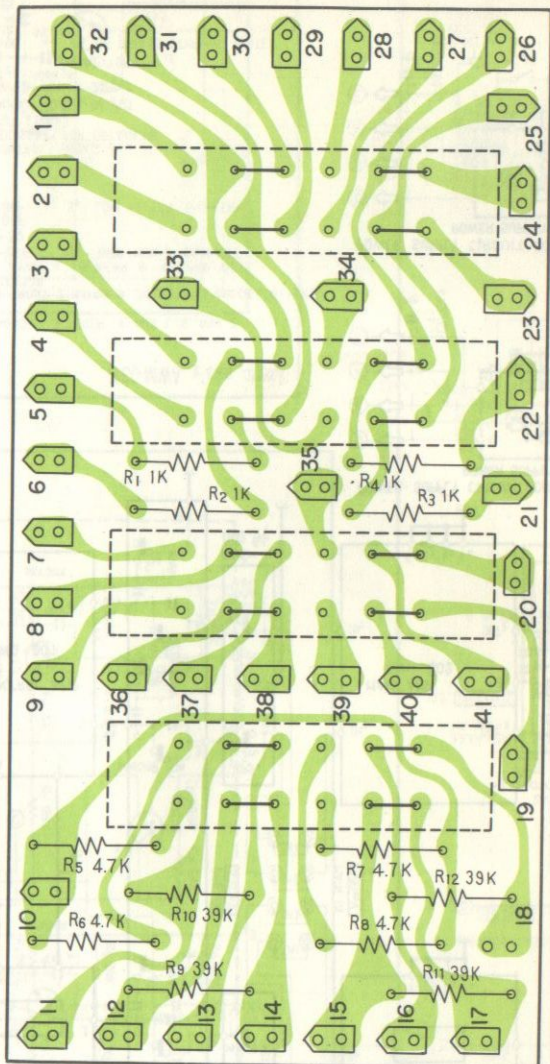




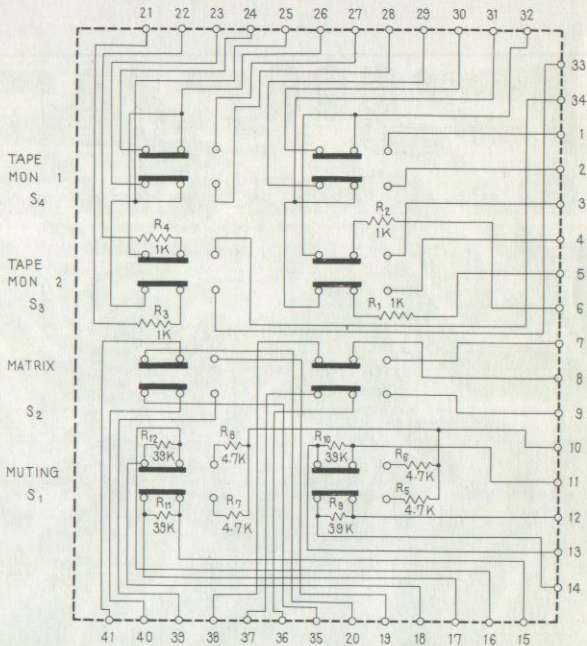
# Power supply ass'y AWR-018



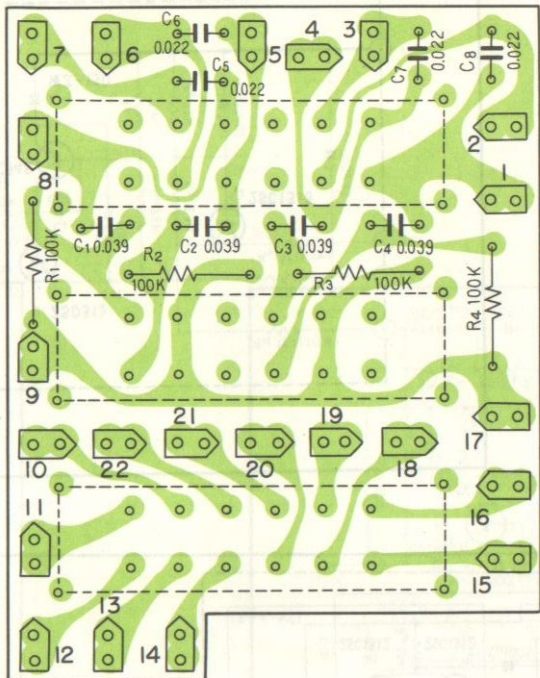
# Switch ass'y AWS-002



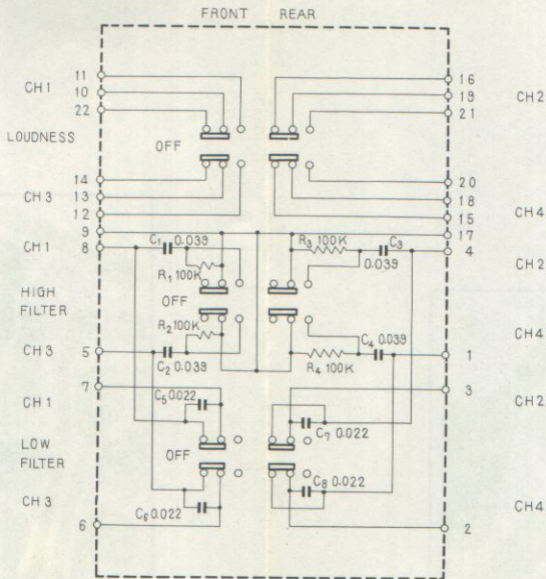
# Switch ass'y AWS-002



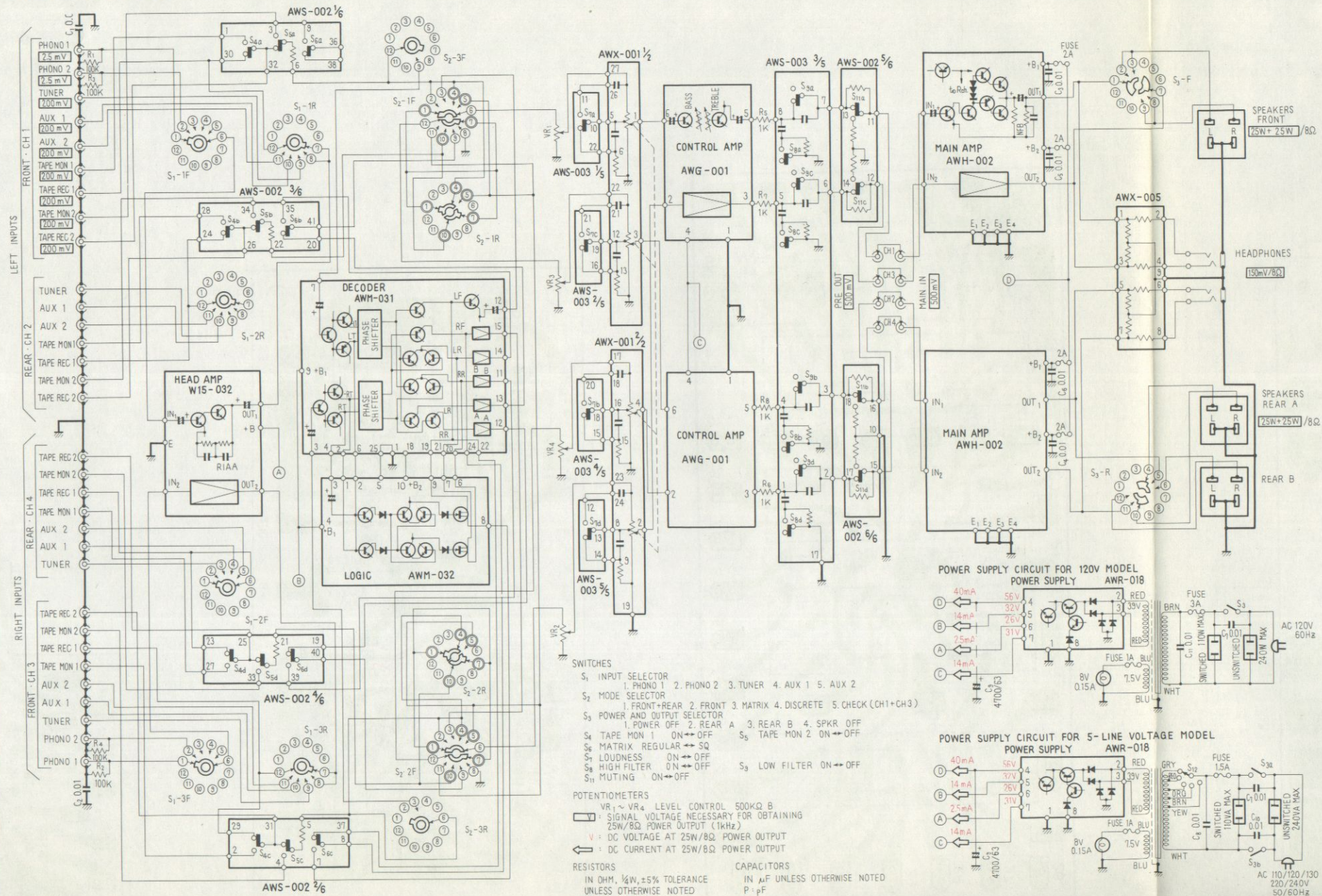
# Switch ass'y AWS-003



# Switch ass'y AWS-003



# QA-800A



- SWITCHES**
- S<sub>1</sub> INPUT SELECTOR  
1. PHONO 1 2. PHONO 2 3. TUNER 4. AUX 1 5. AUX 2
  - S<sub>2</sub> MODE SELECTOR  
1. FRONT+REAR 2. FRONT 3. MATRIX 4. DISCRETE 5. CHECK (CH1+CH3)
  - S<sub>3</sub> POWER AND OUTPUT SELECTOR  
1. POWER OFF 2. REAR A 3. REAR B 4. SPKR OFF
  - S<sub>4</sub> TAPE MON 1 ON ↔ OFF S<sub>5</sub> TAPE MON 2 ON ↔ OFF
  - S<sub>6</sub> MATRIX REGULAR ON ↔ SQ
  - S<sub>7</sub> LOUDNESS ON ↔ OFF
  - S<sub>8</sub> HIGH FILTER ON ↔ OFF
  - S<sub>9</sub> LOW FILTER ON ↔ OFF
  - S<sub>1</sub> MUTING ON ↔ OFF

- POTENTIOMETERS**
- VR<sub>1</sub> ~ VR<sub>4</sub> LEVEL CONTROL 500KΩ B
  - ∇ SIGNAL VOLTAGE NECESSARY FOR OBTAINING 25W/8Ω POWER OUTPUT (1kHz)
  - V DC VOLTAGE AT 25W/8Ω POWER OUTPUT
  - ← DC CURRENT AT 25W/8Ω POWER OUTPUT
- RESISTORS**
- IN OHM, 1/2W, ±5% TOLERANCE
  - IN μF UNLESS OTHERWISE NOTED
  - IN KΩ M: MΩ P: pF

