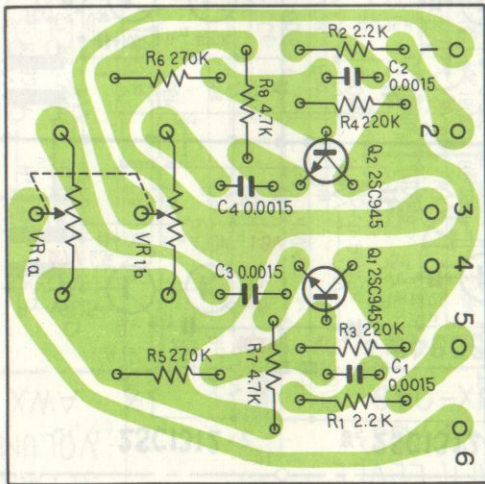


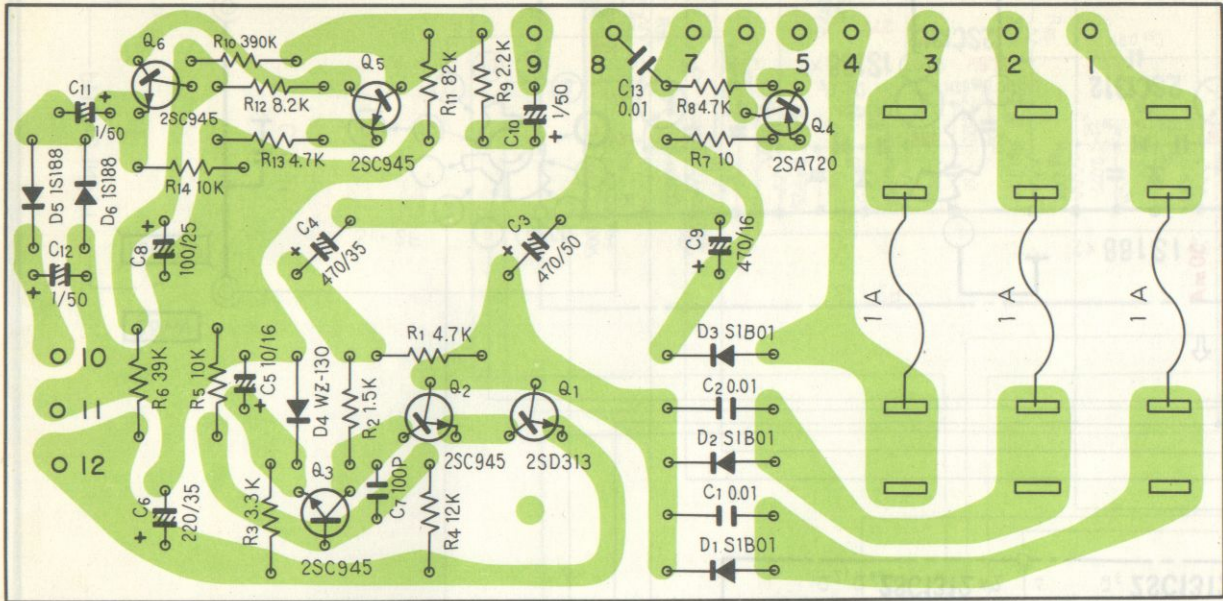
CD-4 DEMODULATOR

**QD-240**  
F KL

# Volume ass'y AWX-049

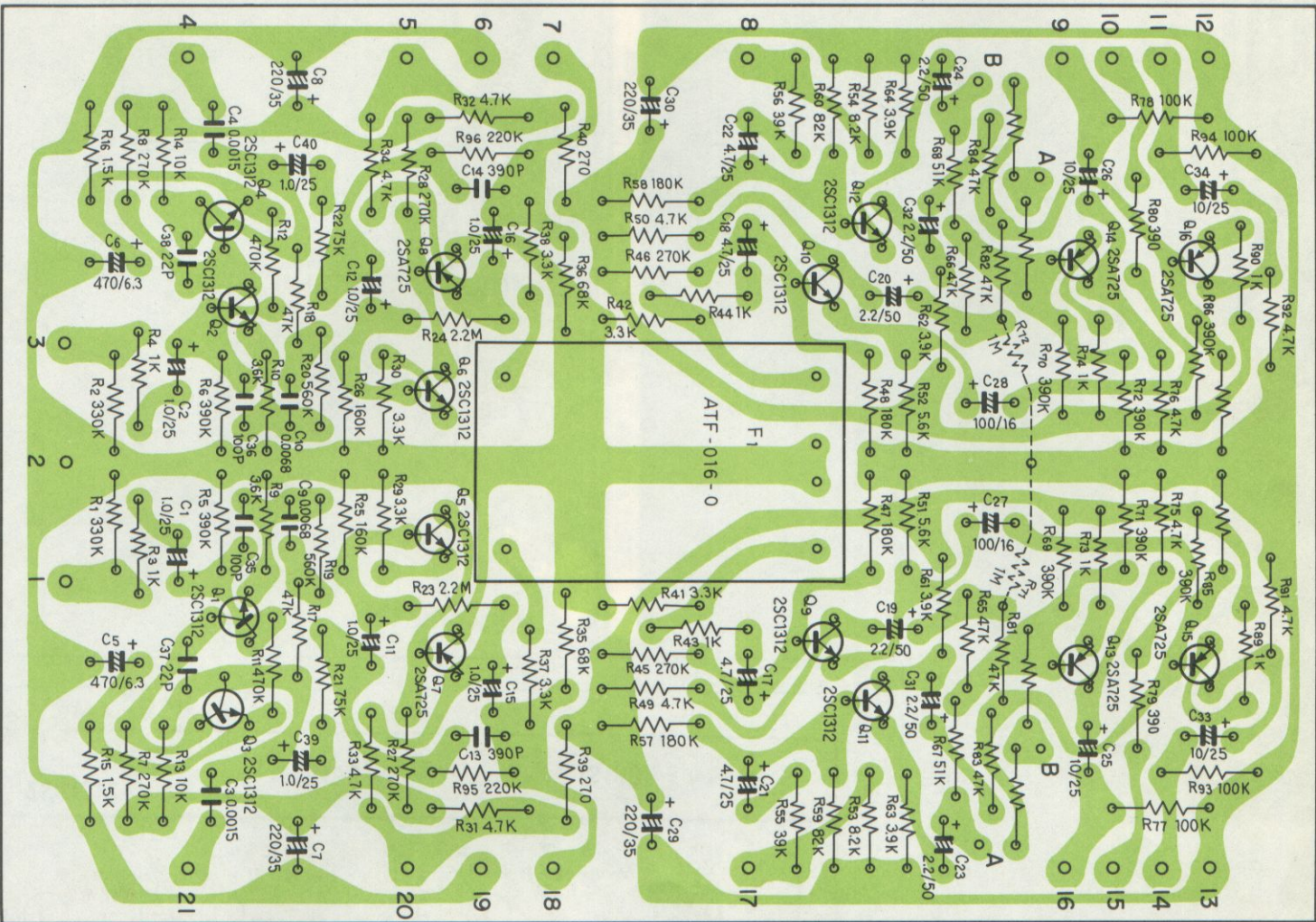


# Power supply ass'y AWR-036

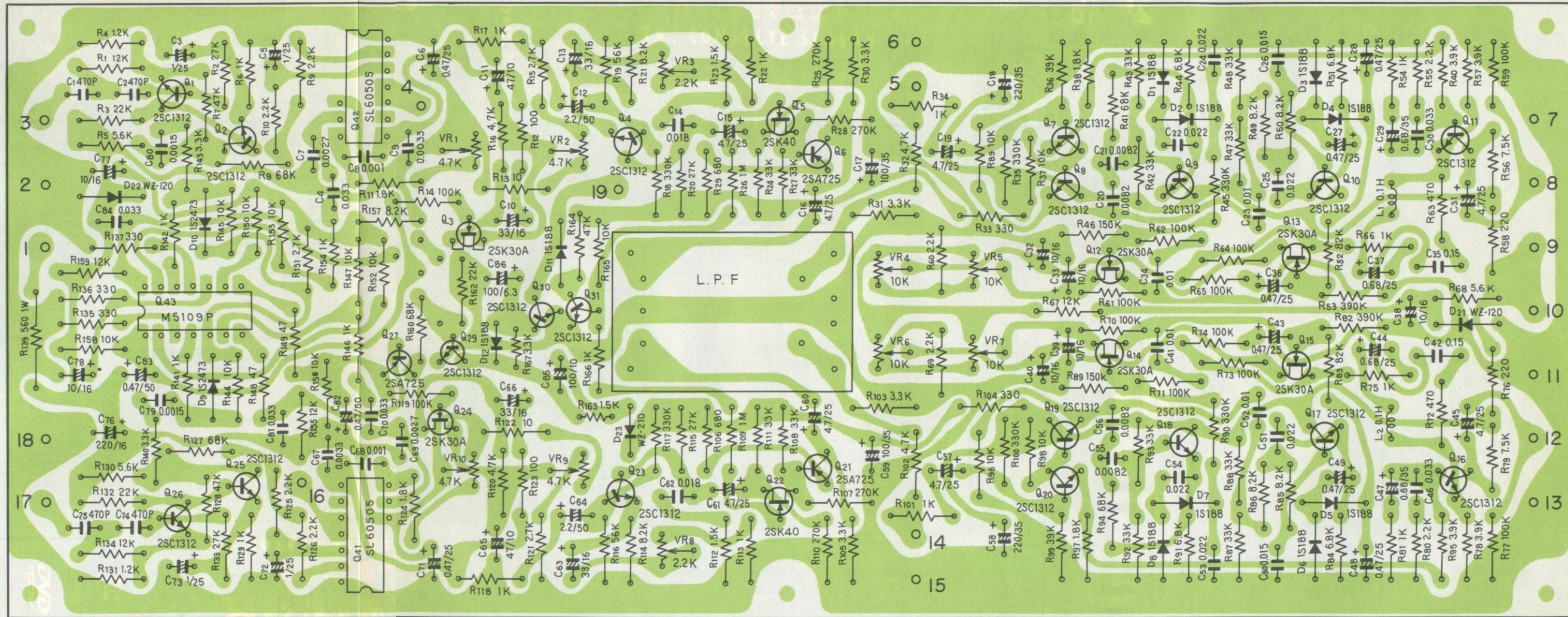




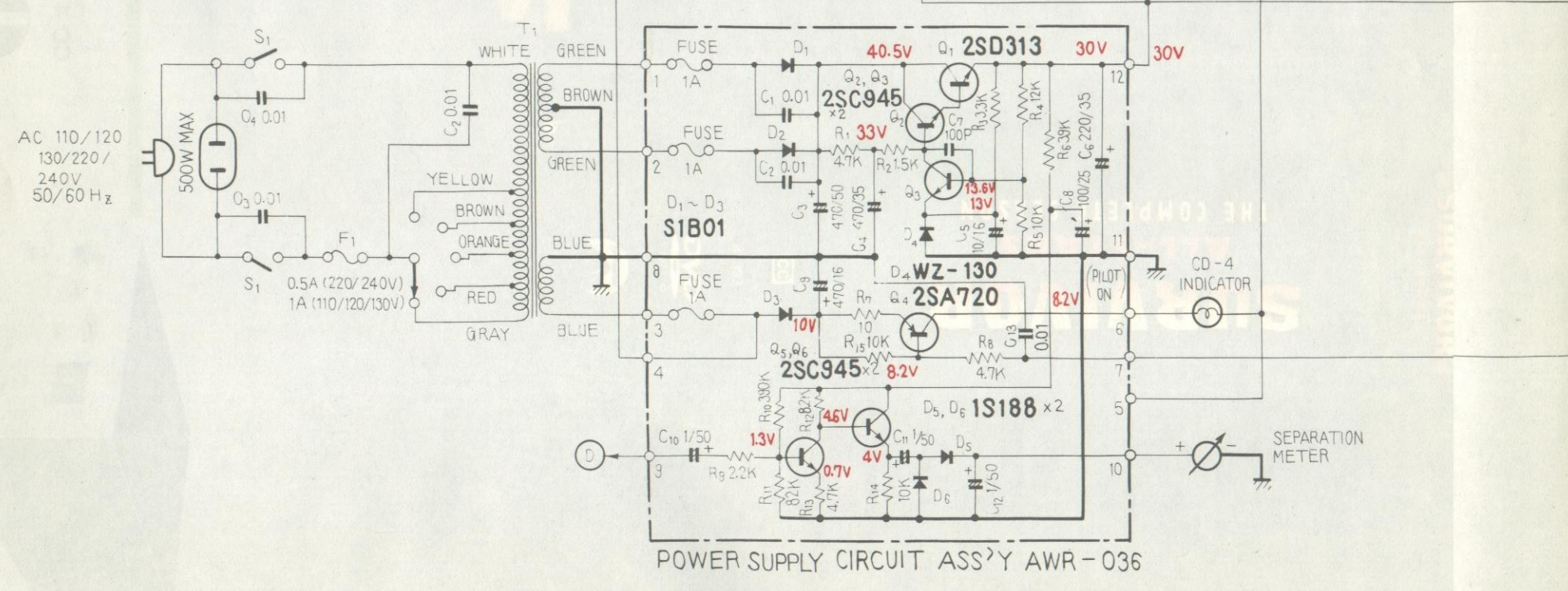
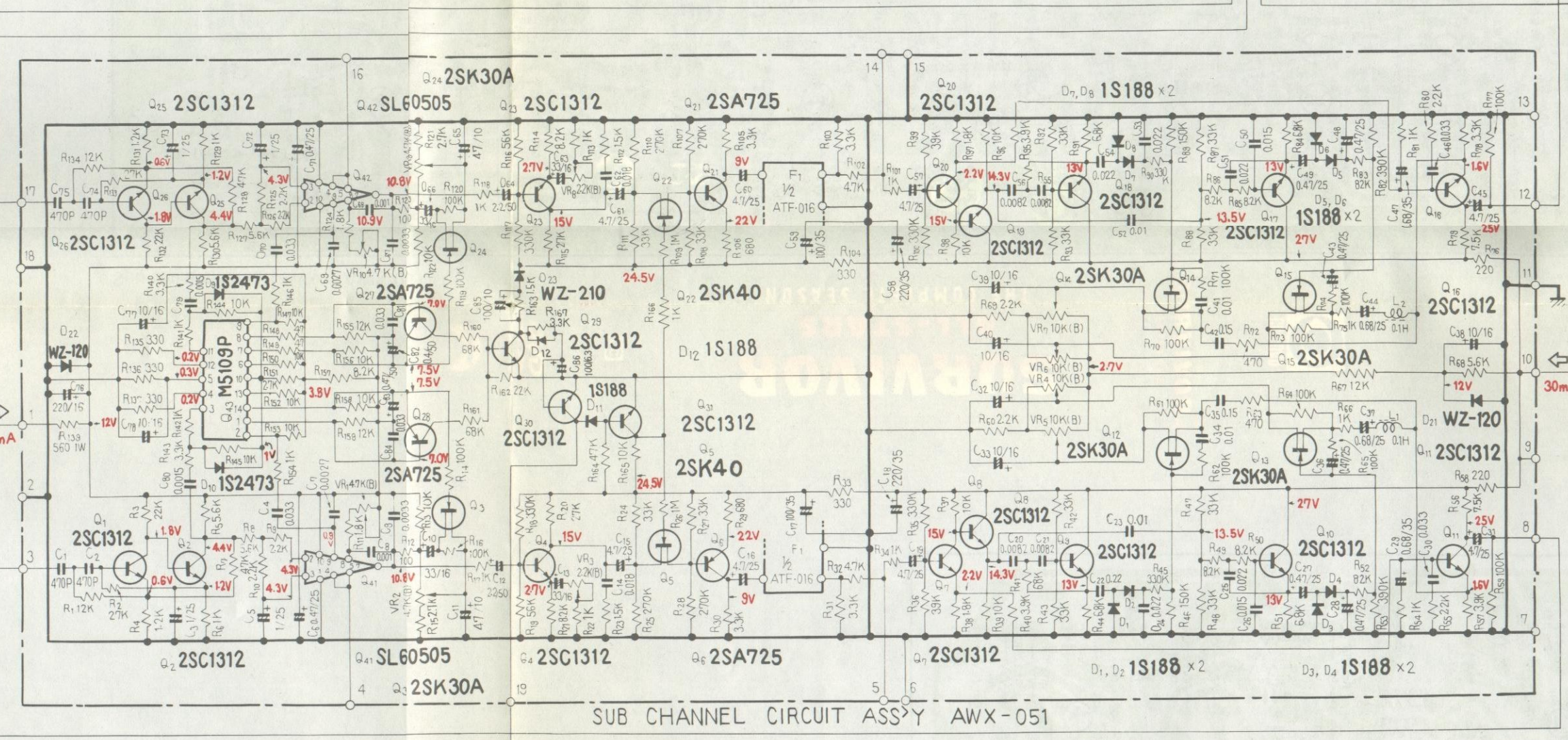
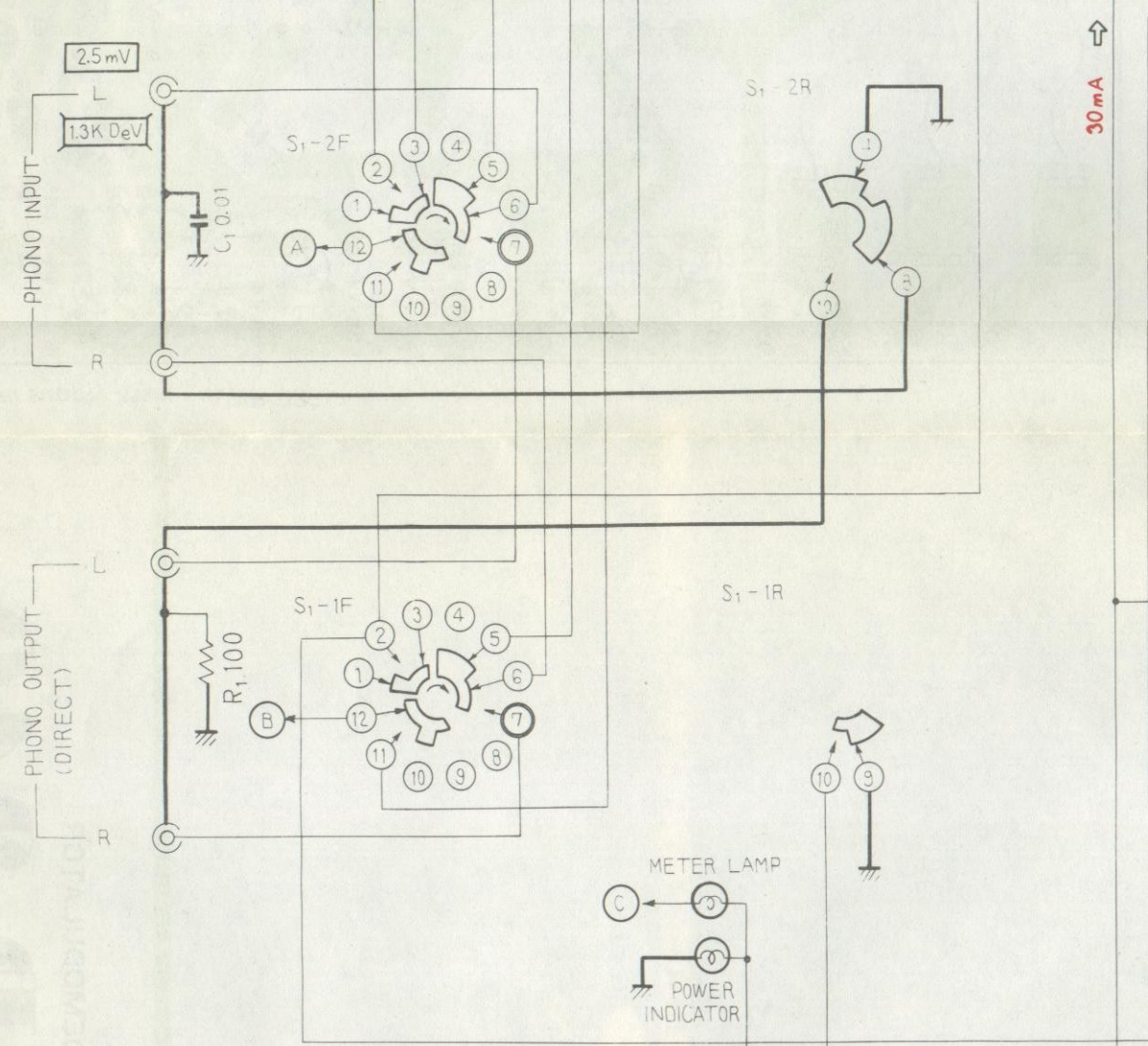
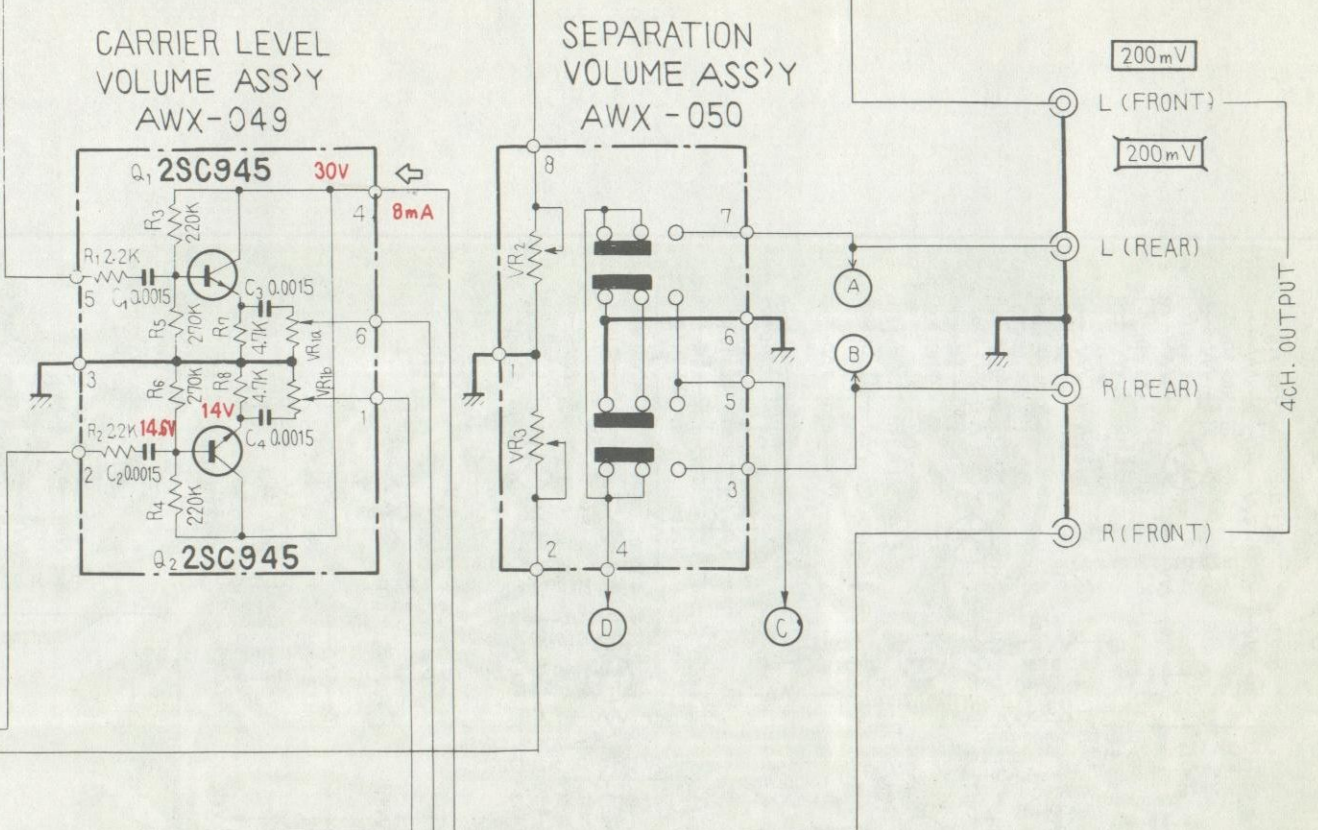
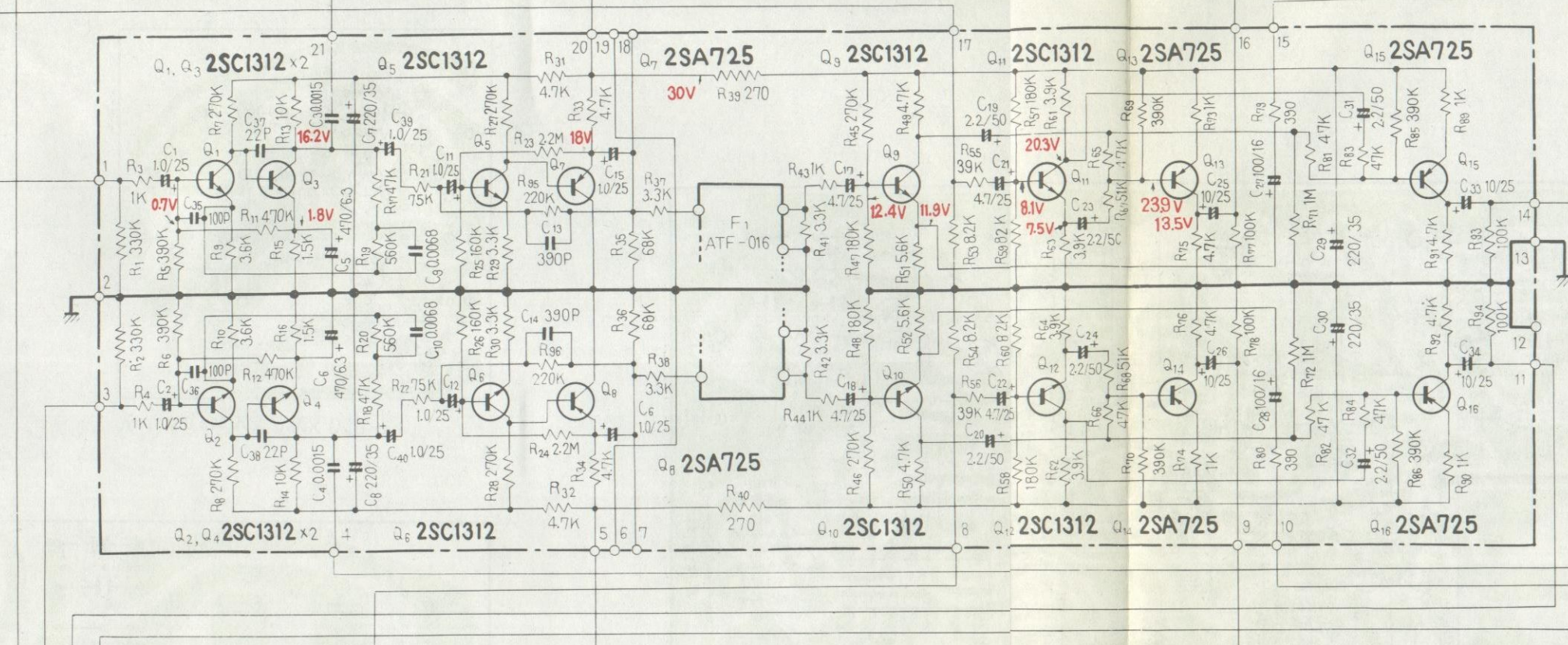
# Equalizer matrix ass'y AWM-043











- SWITCHES**  
 S1 : MODE (2CH position)  
 1. 2CH  
 2. 4CH AUTO  
 3. DIRECT  
 S2 : POWER (OFF position)  
 OFF → ON
- POTENTIOMETERS**  
 VR1 : CARRIER LEVEL  
 VR2, VR3 : SEPARATION

**RESISTORS**  
 IN OHM, 1/4 W, ±5% TOLERANCE  
 UNLESS OTHERWISE NOTED. K = KΩ, M = MΩ.

**CAPACITORS**  
 IN μF UNLESS OTHERWISE NOTED. p = pF.

V : DC VOLTAGE AT NO INPUT SIGNAL.  
 A : DC CURRENT AT NO INPUT SIGNAL.  
 V : SIGNAL VOLTAGE AT 1KHz (2CH).  
 V : SIGNAL VOLTAGE & DEVIATION AT 1KHz (4CH).