

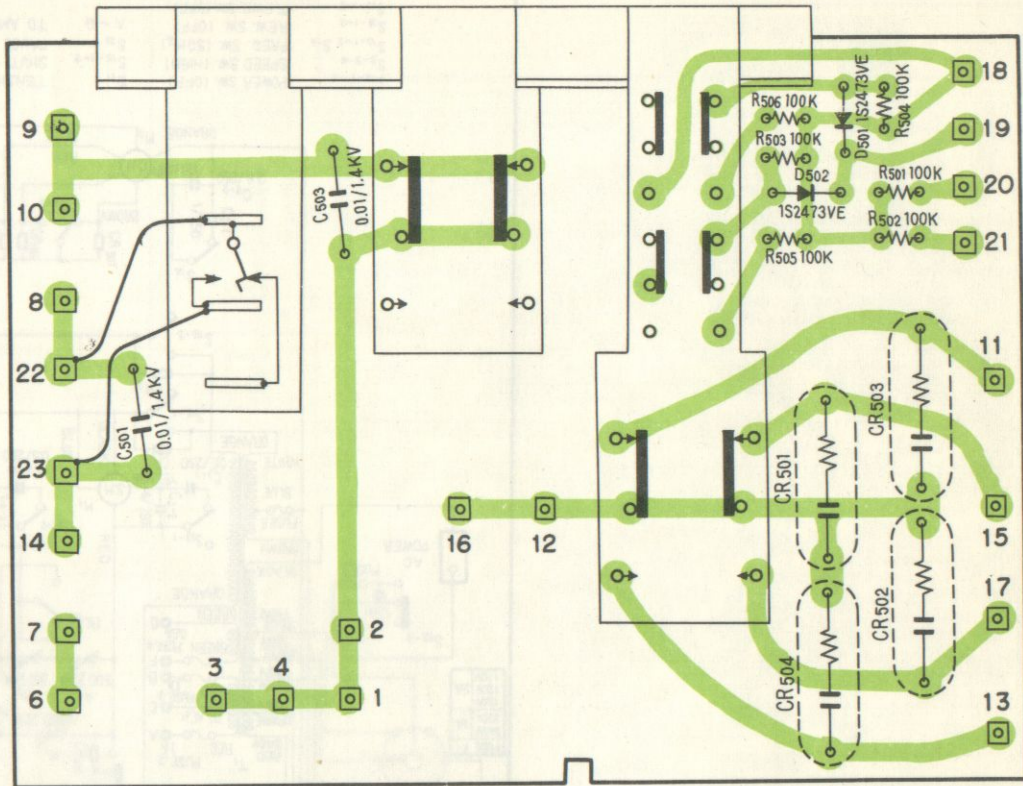


STEREO TAPE DECK

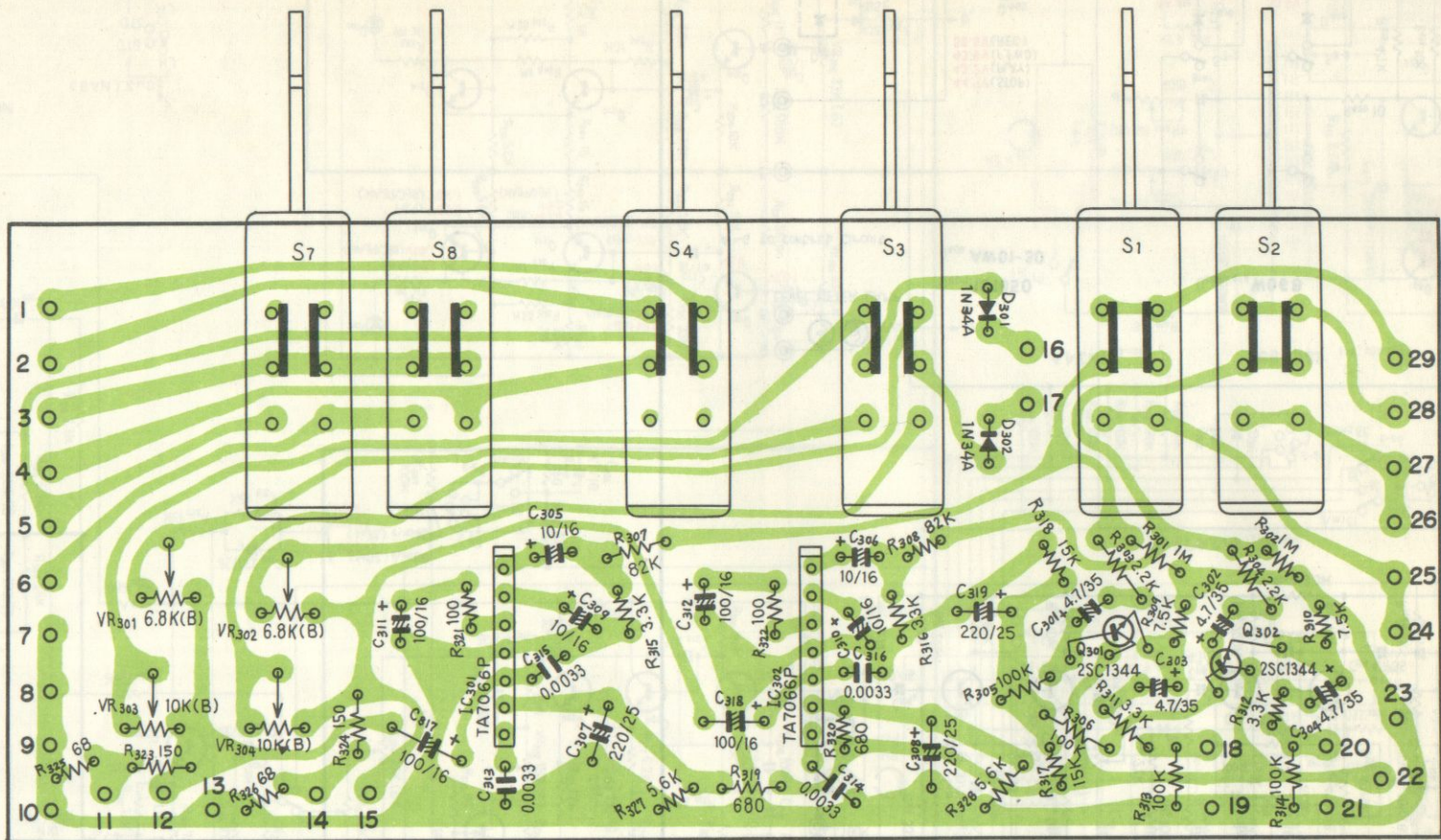
**RT-1050**

**FU**

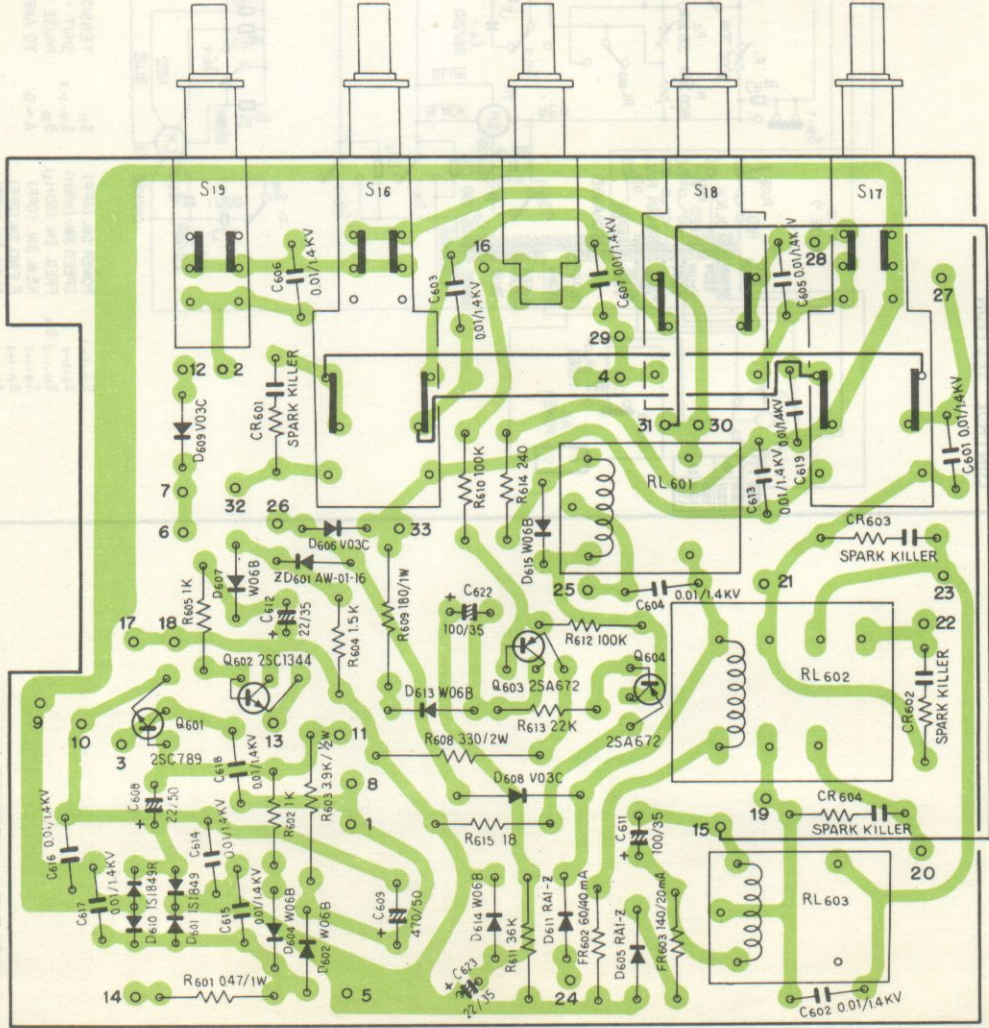
# EQ switch ass'y RWS-021



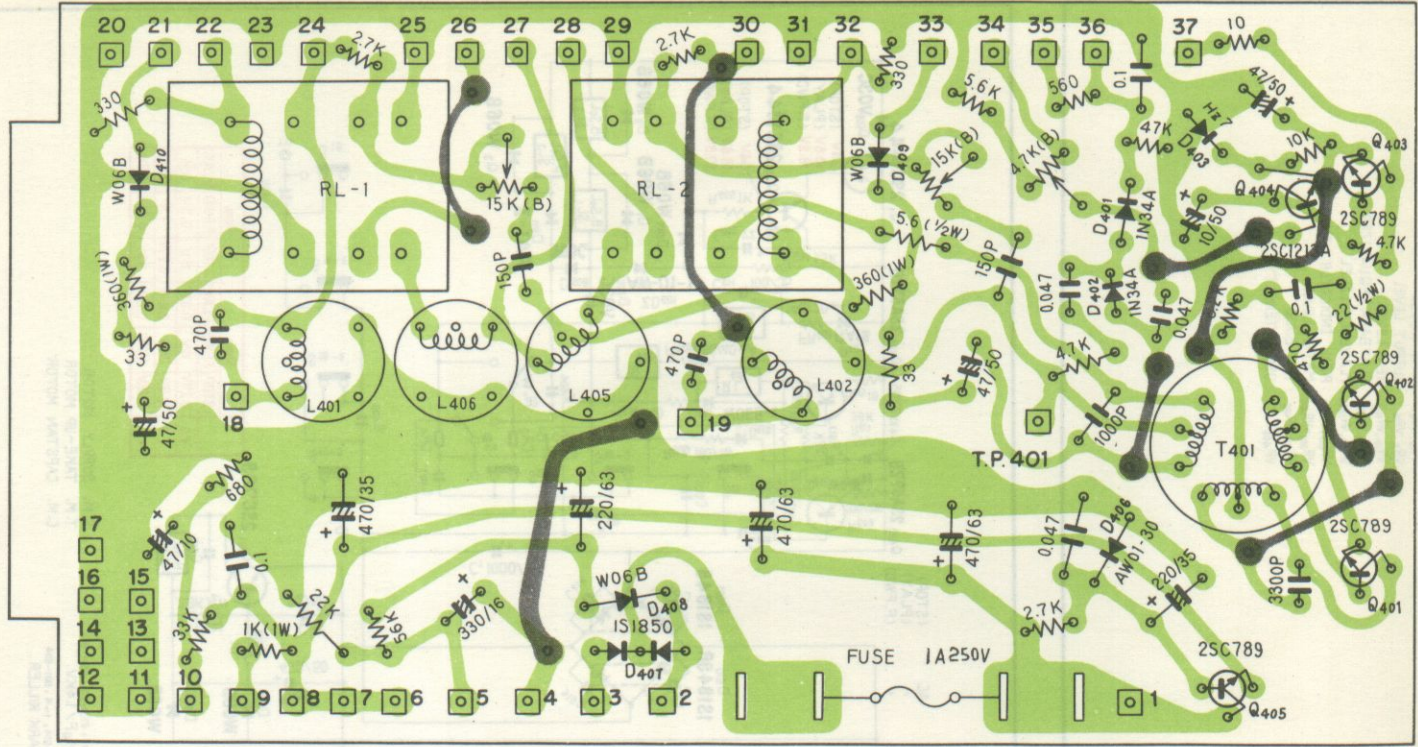
# Switch circuit ass'y RWS-017

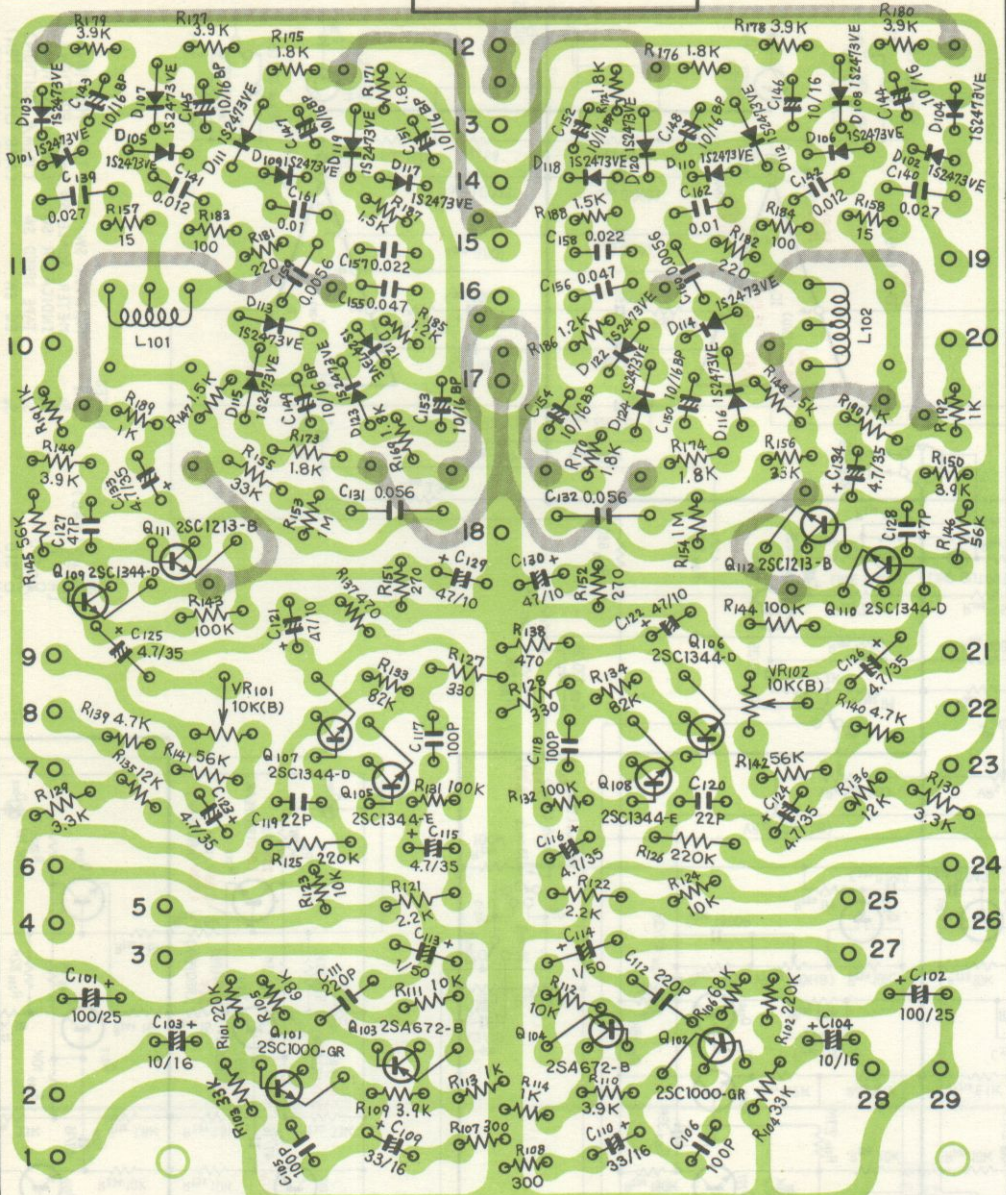


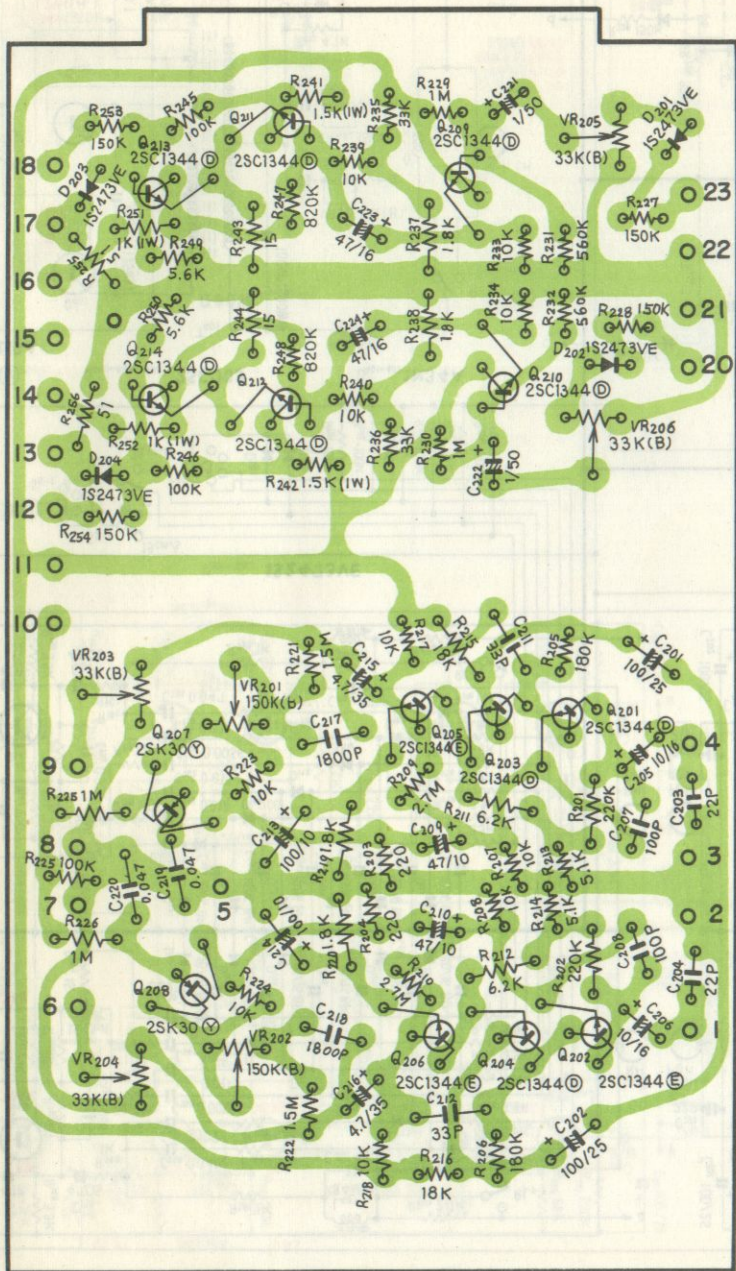
# Control amp ass'y RWG-045



# OSC ass'y RWA-013







# RT-1050

Q<sub>101-102</sub> 2SC1000

Q<sub>103-104</sub> 2SA672

Q<sub>105-110</sub> 2SC1344

Q<sub>111-112</sub> 2SC1213

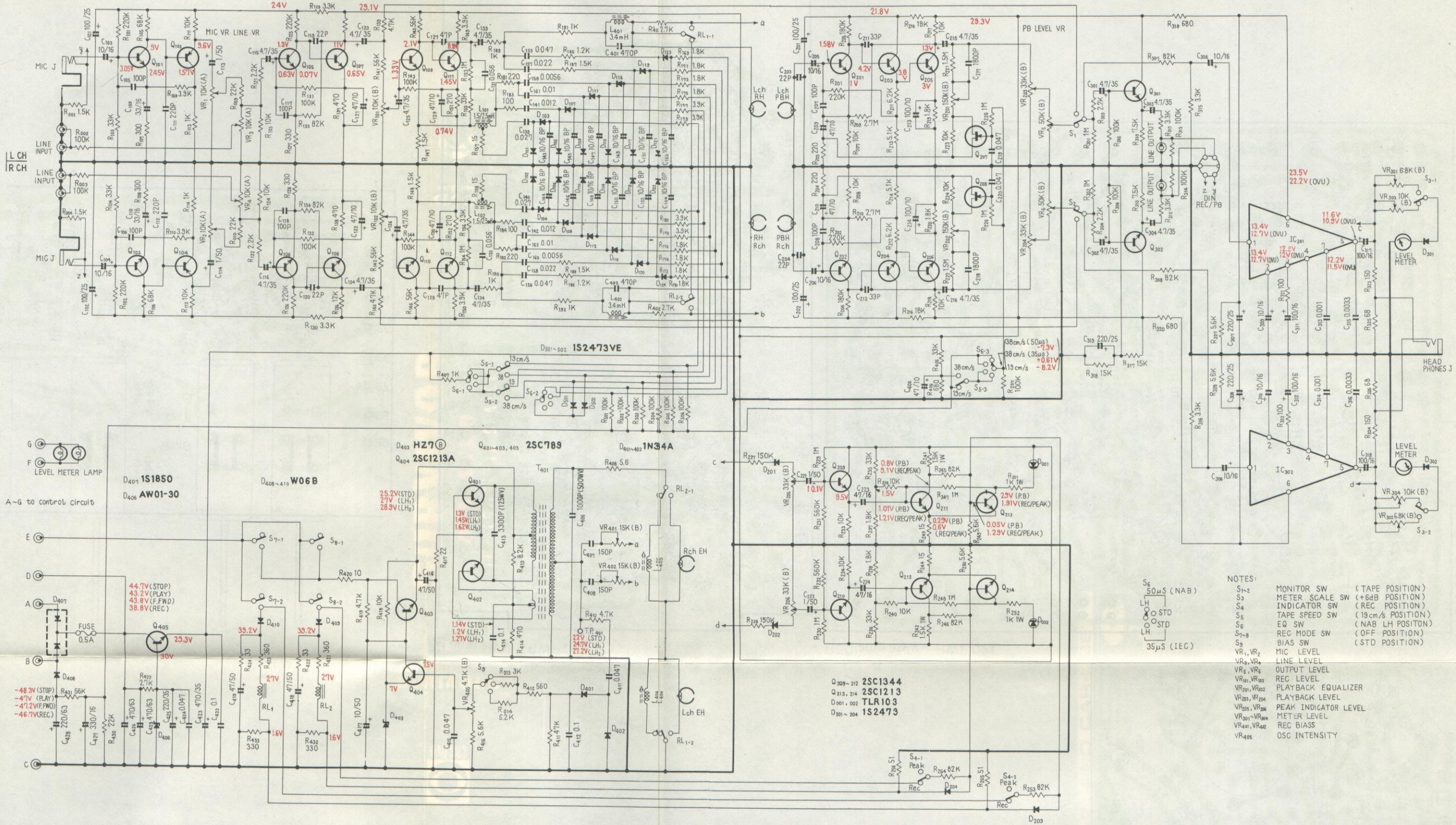
D<sub>101-124</sub> 1S2473VE

Q<sub>201-206</sub> 2SC1344

Q<sub>207-208</sub> 2SK30

Q<sub>301-302</sub> 2SC1344

IC<sub>301-302</sub> TA7066P



- NOTES:
- S<sub>1-2</sub> MONITOR SW (TAPE POSITION)
  - S<sub>3</sub> METER SCALE SW (+6dB POSITION)
  - S<sub>4</sub> INDICATOR SW (REC POSITION)
  - S<sub>5</sub> TAPE SPEED SW (19cm/s POSITION)
  - S<sub>6</sub> EQ SW (NAB LH POSITION)
  - S<sub>7-8</sub> REC MODE SW (OFF POSITION)
  - S<sub>9</sub> BIAS SW (STD POSITION)
  - VR<sub>1</sub>, VR<sub>2</sub> MIC LEVEL
  - VR<sub>3</sub>, VR<sub>4</sub> LINE LEVEL
  - VR<sub>5</sub>, VR<sub>6</sub> OUTPUT LEVEL
  - VR<sub>101</sub>, VR<sub>102</sub> REC LEVEL
  - VR<sub>201</sub>, VR<sub>202</sub> PLAYBACK EQUALIZER
  - VR<sub>203</sub>, VR<sub>204</sub> PLAYBACK LEVEL
  - VR<sub>301</sub>, VR<sub>302</sub> PEAK INDICATOR LEVEL
  - VR<sub>303</sub>, VR<sub>304</sub> METER LEVEL
  - VR<sub>401</sub>, VR<sub>402</sub> REC BIAS
  - VR<sub>403</sub> OSC INTENSITY

Q<sub>209-212</sub> 2SC1344  
 Q<sub>213, 214</sub> 2SC1213  
 D<sub>201, 202</sub> TLR103  
 D<sub>203-204</sub> 1S2473

G LEVEL METER LAMP  
 F LEVEL METER LAMP  
 A-G to control circuit

44.7V (STOP)  
 43.2V (PLAY)  
 43.6V (F.FWD)  
 38.8V (REC)

-48.3V (STOP)  
 -47V (PLAY)  
 -47.2V (F.FWD)  
 -46.7V (REC)

D<sub>403</sub> HZ7(B)  
 Q<sub>404</sub> 2SC1213A

Q<sub>401-403, 405</sub> 2SC789  
 D<sub>401-402</sub> 1N34A

1.14V (STD)  
 1.2V (LH)  
 1.27V (LH<sub>2</sub>)

3.2V (STD)  
 3.7V (LH)  
 27.2V (LH<sub>2</sub>)

Q<sub>209-212</sub> 2SC1344  
 Q<sub>213, 214</sub> 2SC1213  
 D<sub>201, 202</sub> TLR103  
 D<sub>203-204</sub> 1S2473

0.8V (PB)  
 0.9V (REC/PEAK)  
 1.0V (PB)  
 1.2V (REC/PEAK)  
 0.29V (PB)  
 0.6V (REC/PEAK)  
 0.05V (PB)  
 1.29V (REC/PEAK)

38cm/s (50μs) -9.3V  
 38cm/s (35μs) +0.61V  
 19cm/s -8.2V

3.2V (STD)  
 3.7V (LH)  
 27.2V (LH<sub>2</sub>)

38cm/s (50μs) -9.3V  
 38cm/s (35μs) +0.61V  
 19cm/s -8.2V

38cm/s (50μs) -9.3V  
 38cm/s (35μs) +0.61V  
 19cm/s -8.2V

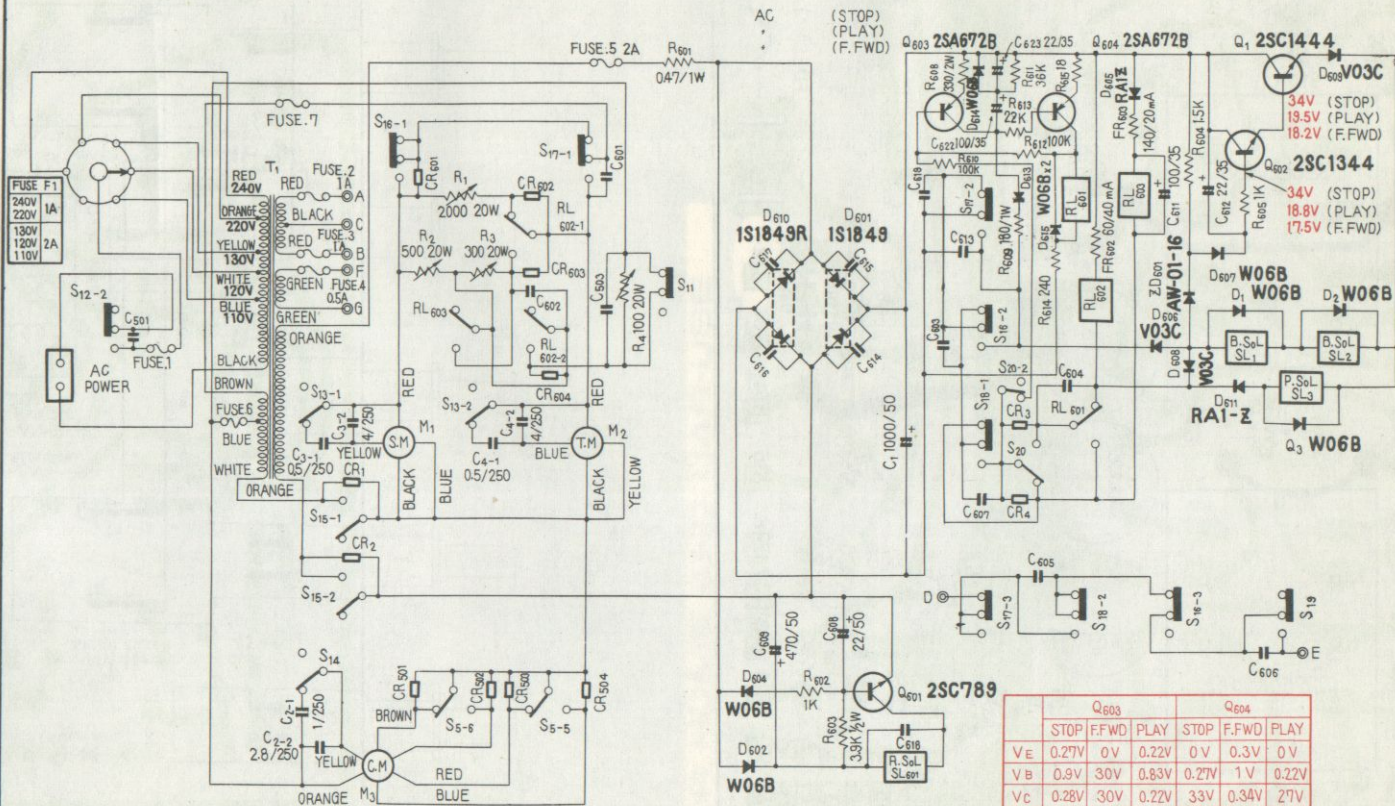
38cm/s (50μs) -9.3V  
 38cm/s (35μs) +0.61V  
 19cm/s -8.2V

38cm/s (50μs) -9.3V  
 38cm/s (35μs) +0.61V  
 19cm/s -8.2V

38cm/s (50μs) -9.3V  
 38cm/s (35μs) +0.61V  
 19cm/s -8.2V



# CONTROL SECTION



S<sub>12-1-2</sub>  
S<sub>5-5-6</sub>  
S<sub>13-1-2</sub> S<sub>14</sub>  
S<sub>16-1-3</sub>  
S<sub>17-1-3</sub>  
S<sub>18-1-2</sub>  
S<sub>19</sub>

POWER SW. (OFF)  
SPEED SW. (HIGH)  
FREQ. SW. (50Hz)  
REW. SW. (OFF)  
F. FWD. SW. (OFF)  
PLAY SW. (OFF)  
REC SW. (OFF)

S<sub>11</sub>  
S<sub>15-1-2</sub>  
S<sub>25</sub>  
A 7 G

TENSION SW. (HIGH)  
SHUT - OFF SW. (OFF)  
PAUSE SW. (ON)  
TO AMPLIFIER SECTION

C<sub>601-607</sub>, 613-618, 501-503  
0.01μF/1.4KV  
CR<sub>601-604</sub>, 1-4, 901-904  
SPARK KILLER

FR<sub>602-603</sub>  
FUSE RESISTOR

S. M. SUPPLY MOTOR  
T. M. TAKE-UP MOTOR  
C. M. CAPSTAN MOTOR

|                | Q <sub>603</sub> |       |       | Q <sub>604</sub> |       |       |
|----------------|------------------|-------|-------|------------------|-------|-------|
|                | STOP             | F.FWD | PLAY  | STOP             | F.FWD | PLAY  |
| V <sub>E</sub> | 0.27V            | 0V    | 0.22V | 0V               | 0.3V  | 0V    |
| V <sub>B</sub> | 0.9V             | 30V   | 0.83V | 0.27V            | 1V    | 0.22V |
| V <sub>C</sub> | 0.28V            | 30V   | 0.22V | 33V              | 0.34V | 27V   |