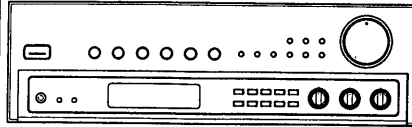


875

PIONEER
The Art of Entertainment

Service Manual



ORDER NO.
ARZ2844

STEREO RECEIVER

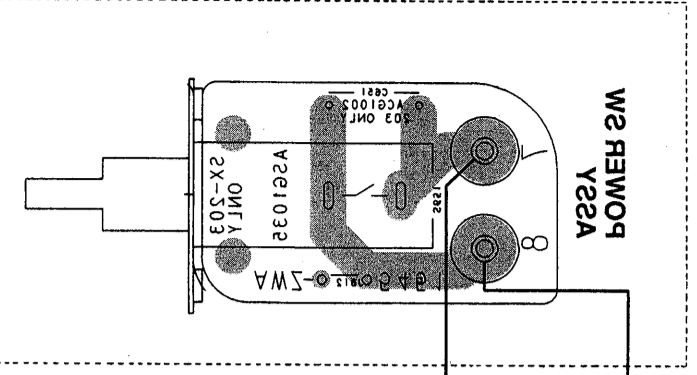
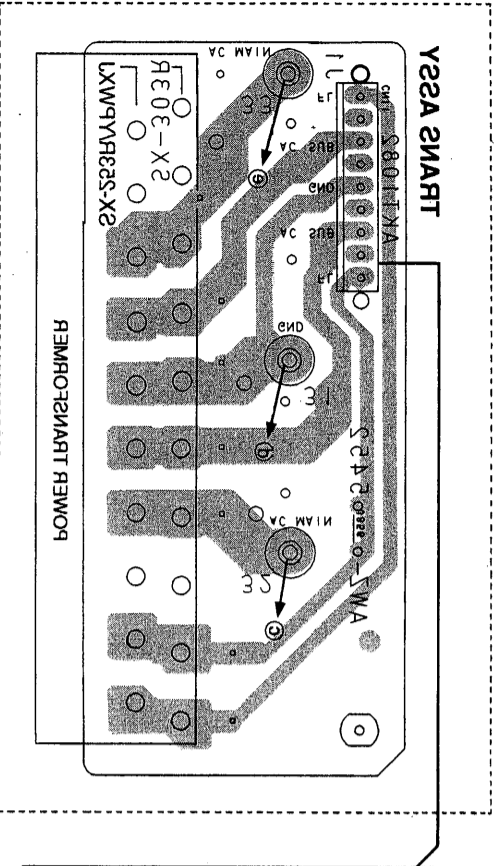
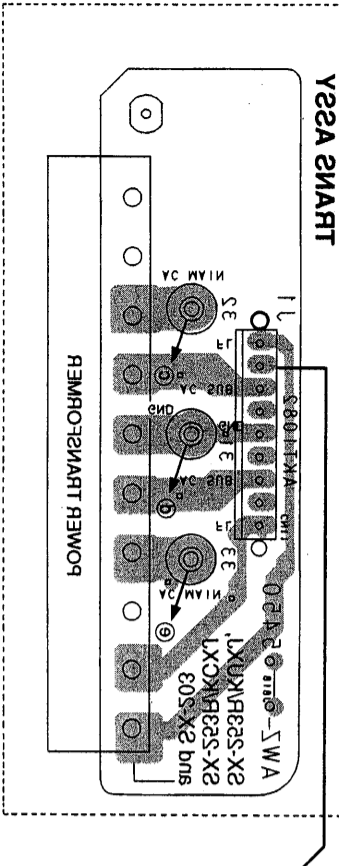
SX-303R

SX-253R

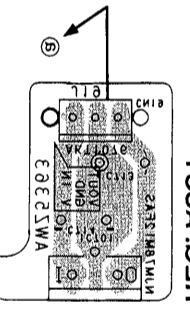
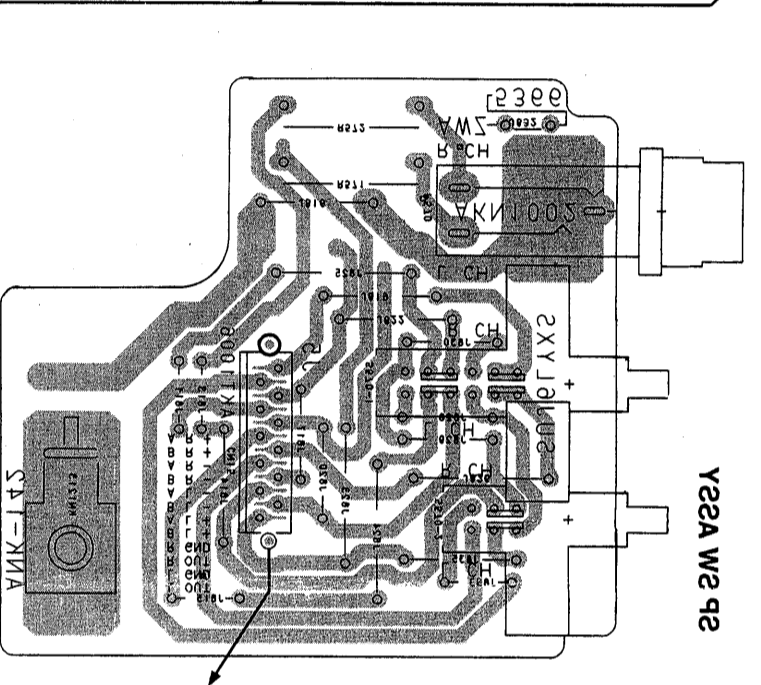
SX-203



2X-303R2DX1 and 2X-303R1DX1 sockets
2X-303R2DX1 and 2X-303R1DX1 sockets
2X-303R2DX1 and 2X-303R1DX1 sockets



Y25A W2 P2

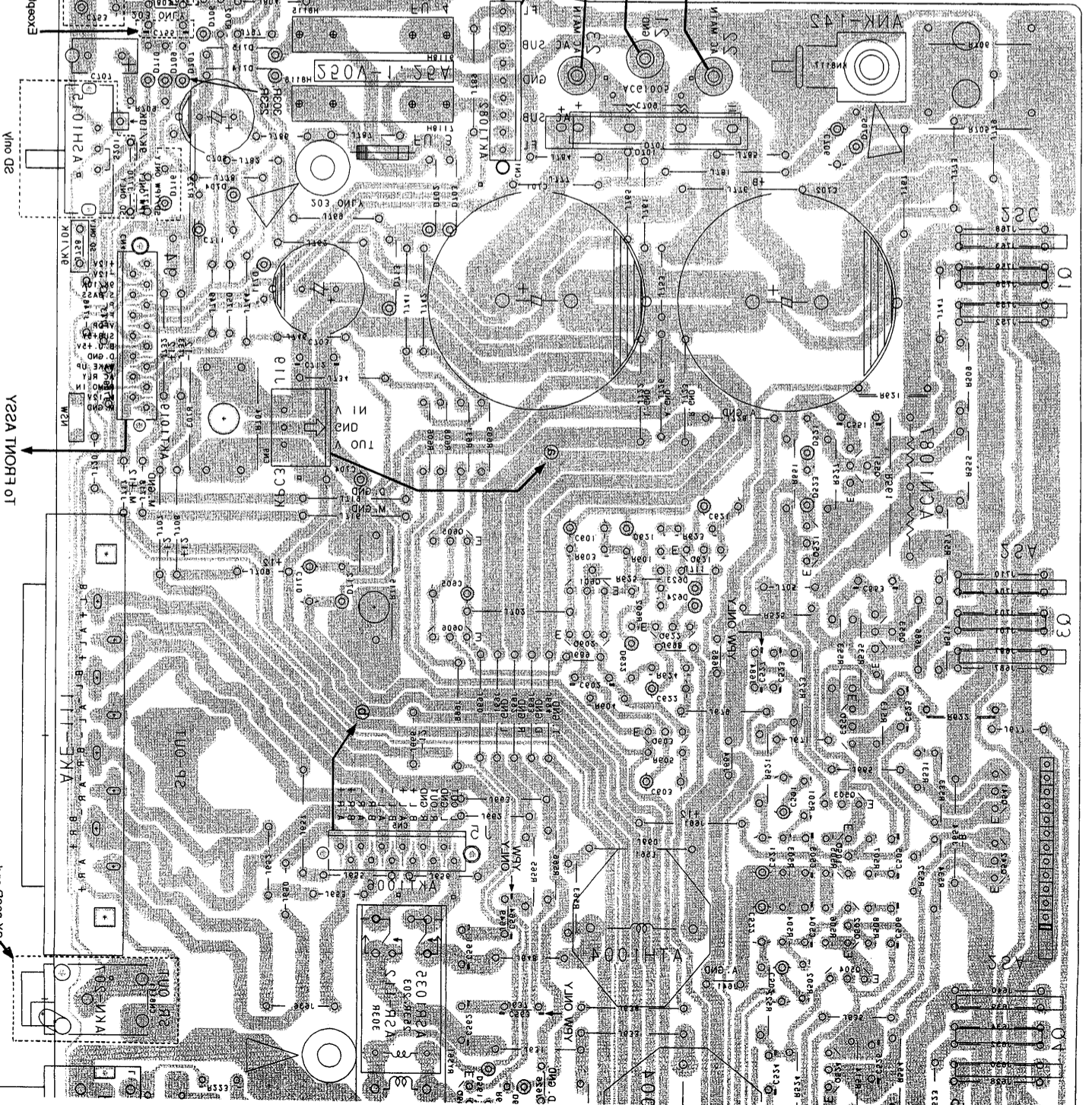


Y25A P2

POWER DISTRIBUTION

Y25A P2

POWER DISTRIBUTION



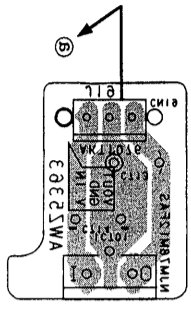
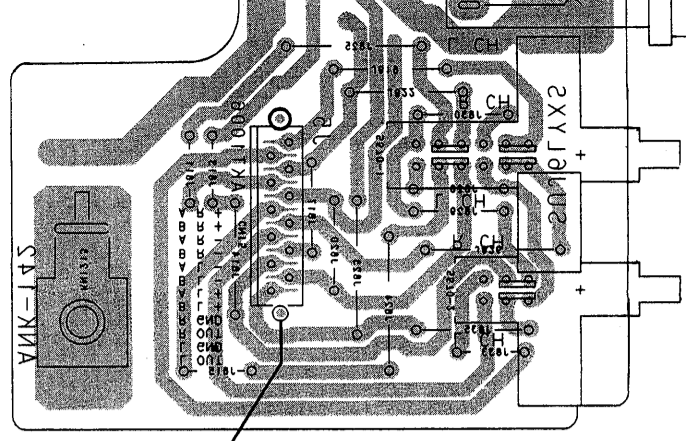
POWER DISTRIBUTION

POWER DISTRIBUTION

POWER DISTRIBUTION

POWER DISTRIBUTION

Y22A W2 P2



9.041

• LKX100000-03-02-X2 has 10 ballpips on the left side
 • LKX100000-03-02-X2 has 10 ballpips on the right side
 • LKX100000-03-02-X2 has 10 ballpips on the top side
 • LKX100000-03-02-X2 has 10 ballpips on the bottom side
 • LKX100000-03-02-X2 has 10 ballpips on the front side
 • LKX100000-03-02-X2 has 10 ballpips on the back side
 • LKX100000-03-02-X2 has 10 ballpips on the left side
 • LKX100000-03-02-X2 has 10 ballpips on the right side
 • LKX100000-03-02-X2 has 10 ballpips on the top side
 • LKX100000-03-02-X2 has 10 ballpips on the bottom side
 • LKX100000-03-02-X2 has 10 ballpips on the front side
 • LKX100000-03-02-X2 has 10 ballpips on the back side

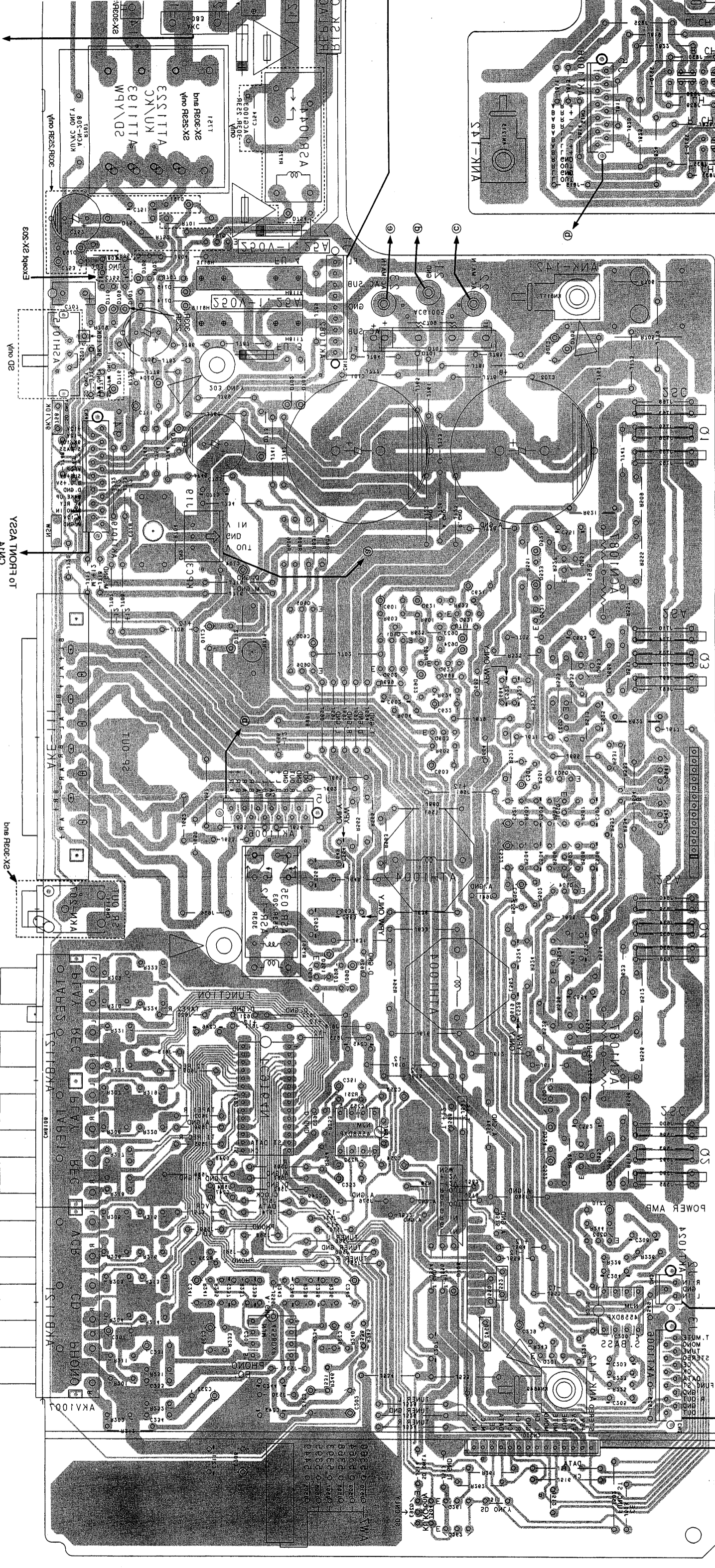
Y22A 7A

10 20 30 40 50

1850 1860 1870 1880 1890 1900 1910 1920 1930 1940 1950 1960 1970 1980 1990 2000 2010 2020 2030 2040 2050 2060 2070 2080 2090 2100 2110 2120 2130 2140 2150 2160 2170 2180 2190 2200 2210 2220 2230 2240 2250 2260 2270 2280 2290 2300 2310 2320 2330 2340 2350 2360 2370 2380 2390 2400 2410 2420 2430 2440 2450 2460 2470 2480 2490 2500 2510 2520 2530 2540 2550 2560 2570 2580 2590 2600 2610 2620 2630 2640 2650 2660 2670 2680 2690 2700 2710 2720 2730 2740 2750 2760 2770 2780 2790 2800 2810 2820 2830 2840 2850 2860 2870 2880 2890 2900 2910 2920 2930 2940 2950 2960 2970 2980 2990 3000 3010 3020 3030 3040 3050 3060 3070 3080 3090 3100 3110 3120 3130 3140 3150 3160 3170 3180 3190 3200 3210 3220 3230 3240 3250 3260 3270 3280 3290 3300 3310 3320 3330 3340 3350 3360 3370 3380 3390 3400 3410 3420 3430 3440 3450 3460 3470 3480 3490 3500 3510 3520 3530 3540 3550 3560 3570 3580 3590 3600 3610 3620 3630 3640 3650 3660 3670 3680 3690 3700 3710 3720 3730 3740 3750 3760 3770 3780 3790 3800 3810 3820 3830 3840 3850 3860 3870 3880 3890 3900 3910 3920 3930 3940 3950 3960 3970 3980 3990 4000 4010 4020 4030 4040 4050 4060 4070 4080 4090 4100 4110 4120 4130 4140 4150 4160 4170 4180 4190 4200 4210 4220 4230 4240 4250 4260 4270 4280 4290 4300 4310 4320 4330 4340 4350 4360 4370 4380 4390 4400 4410 4420 4430 4440 4450 4460 4470 4480 4490 4500 4510 4520 4530 4540 4550 4560 4570 4580 4590 4600 4610 4620 4630 4640 4650 4660 4670 4680 4690 4700 4710 4720 4730 4740 4750 4760 4770 4780 4790 4800 4810 4820 4830 4840 4850 4860 4870 4880 4890 4900 4910 4920 4930 4940 4950 4960 4970 4980 4990 5000 5010 5020 5030 5040 5050 5060 5070 5080 5090 5100 5110 5120 5130 5140 5150 5160 5170 5180 5190 5200 5210 5220 5230 5240 5250 5260 5270 5280 5290 5300 5310 5320 5330 5340 5350 5360 5370 5380 5390 5400 5410 5420 5430 5440 5450 5460 5470 5480 5490 5500 5510 5520 5530 5540 5550 5560 5570 5580 5590 5600 5610 5620 5630 5640 5650 5660 5670 5680 5690 5700 5710 5720 5730 5740 5750 5760 5770 5780 5790 5800 5810 5820 5830 5840 5850 5860 5870 5880 5890 5900 5910 5920 5930 5940 5950 5960 5970 5980 5990 6000 6010 6020 6030 6040 6050 6060 6070 6080 6090 6100 6110 6120 6130 6140 6150 6160 6170 6180 6190 6200 6210 6220 6230 6240 6250 6260 6270 6280 6290 6300 6310 6320 6330 6340 6350 6360 6370 6380 6390 6400 6410 6420 6430 6440 6450 6460 6470 6480 6490 6500 6510 6520 6530 6540 6550 6560 6570 6580 6590 6600 6610 6620 6630 6640 6650 6660 6670 6680 6690 6700 6710 6720 6730 6740 6750 6760 6770 6780 6790 6800 6810 6820 6830 6840 6850 6860 6870 6880 6890 6900 6910 6920 6930 6940 6950 6960 6970 6980 6990 7000 7010 7020 7030 7040 7050 7060 7070 7080 7090 7100 7110 7120 7130 7140 7150 7160 7170 7180 7190 7200 7210 7220 7230 7240 7250 7260 7270 7280 7290 7300 7310 7320 7330 7340 7350 7360 7370 7380 7390 7400 7410 7420 7430 7440 7450 7460 7470 7480 7490 7500 7510 7520 7530 7540 7550 7560 7570 7580 7590 7600 7610 7620 7630 7640 7650 7660 7670 7680 7690 7700 7710 7720 7730 7740 7750 7760 7770 7780 7790 7800 7810 7820 7830 7840 7850 7860 7870 7880 7890 7900 7910 7920 7930 7940 7950 7960 7970 7980 7990 8000 8010 8020 8030 8040 8050 8060 8070 8080 8090 8100 8110 8120 8130 8140 8150 8160 8170 8180 8190 8200 8210 8220 8230 8240 8250 8260 8270 8280 8290 8300 8310 8320 8330 8340 8350 8360 8370 8380 8390 8400 8410 8420 8430 8440 8450 8460 8470 8480 8490 8500 8510 8520 8530 8540 8550 8560 8570 8580 8590 8600 8610 8620 8630 8640 8650 8660 8670 8680 8690 8700 8710 8720 8730 8740 8750 8760 8770 8780 8790 8800 8810 8820 8830 8840 8850 8860 8870 8880 8890 8900 8910 8920 8930 8940 8950 8960 8970 8980 8990 9000 9010 9020 9030 9040 9050 9060 9070 9080 9090 9100 9110 9120 9130 9140 9150 9160 9170 9180 9190 9200 9210 9220 9230 9240 9250 9260 9270 9280 9290 9300 9310 9320 9330 9340 9350 9360 9370 9380 9390 9400 9410 9420 9430 9440 9450 9460 9470 9480 9490 9500 9510 9520 9530 9540 9550 9560 9570 9580 9590 9600 9610 9620 9630 9640 9650 9660 9670 9680 9690 9700 9710 9720 9730 9740 9750 9760 9770 9780 9790 9800 9810 9820 9830 9840 9850 9860 9870 9880 9890 9900 9910 9920 9930 9940 9950 9960 9970 9980 9990 10000

Y22A T10P1 OT

MAIN1 OT
E1JUDOM REW1/UT
10S8W1
1A50 S950
8A50



ORGANIZAT REMOP OT

Y22A T10P1 OT

YMO D2

YMO D1

YMO D3

YMO D4

YMO D5

YMO D6

YMO D7

YMO D8

YMO D9

YMO D10

YMO D11

YMO D12

YMO D13

YMO D14

YMO D15

YMO D16

YMO D17

YMO D18

YMO D19

YMO D20

YMO D21

YMO D22

YMO D23

YMO D24

YMO D25

YMO D26

YMO D27

YMO D28

YMO D29

YMO D30

YMO D31

YMO D32

YMO D33

YMO D34

YMO D35

YMO D36

YMO D37

YMO D38

YMO D39

YMO D40

YMO D41

YMO D42

YMO D43

YMO D44

YMO D45

YMO D46

YMO D47

YMO D48

YMO D49

YMO D50

YMO D51

YMO D52

YMO D53

YMO D54

YMO D55

YMO D56

YMO D57

YMO D58

YMO D59

YMO D60

YMO D61

YMO D62

YMO D63

YMO D64

YMO D65

YMO D66

YMO D67

YMO D68

YMO D69

YMO D70

YMO D71

YMO D72

YMO D73

YMO D74

YMO D75

YMO D76

YMO D77

YMO D78

YMO D79

YMO D80

YMO D81

YMO D82

YMO D83

YMO D84

YMO D85

YMO D86

YMO D87

YMO D88

YMO D89

YMO D90

YMO D91

YMO D92

YMO D93

YMO D94

YMO D95

YMO D96

YMO D97

YMO D98

YMO D99

YMO D100

This diagram is viewed from the foil side.

A

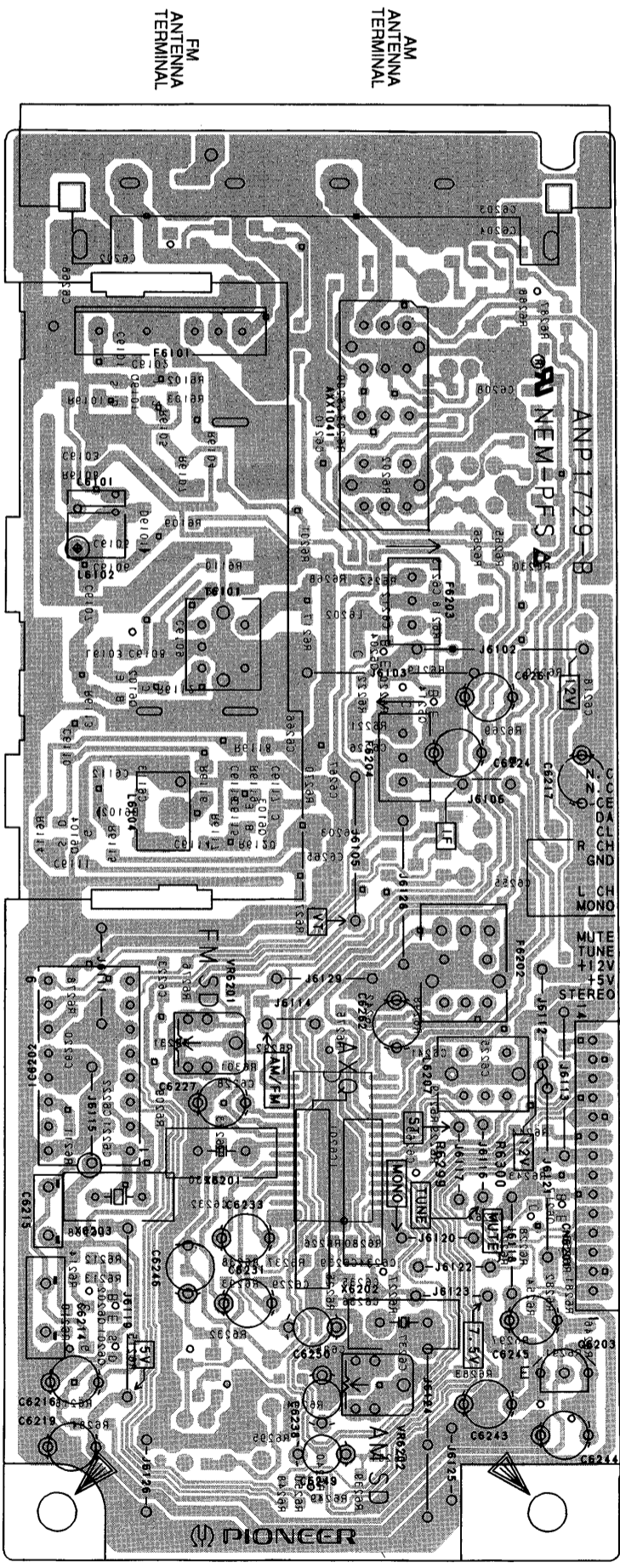
NOTE FOR PCB DIAGRAMS:
 1. Part numbers in PCB diagrams match those in the schematic diagrams.
 2. A comparison between main parts of PCB and schematic diagrams is shown below.

| Symbol in PCB Diagrams | Symbol in Schematic Diagrams | Part Name |
|------------------------|------------------------------|-----------------------|
| | | Transistor |
| | | Diode |
| | | Capacitor (Polarized) |

3. The transistor terminal marked with **E** or **□** shows the emitter.
 4. The diode terminal marked with **⊕** or **○** shows cathode side.
 5. The capacitor terminal marked with **⊖** and **□** shows negative terminal.

This diagram is viewed from the mounted parts side.

FM/AM TUNER MODULE



10180 41580 80180
 40580 50180 30180
 10580 11580 20580
 30580 40580 50580
 60580 70580 80580
 90580 100580 110580

D

C

B

A

1

2

3

4

5

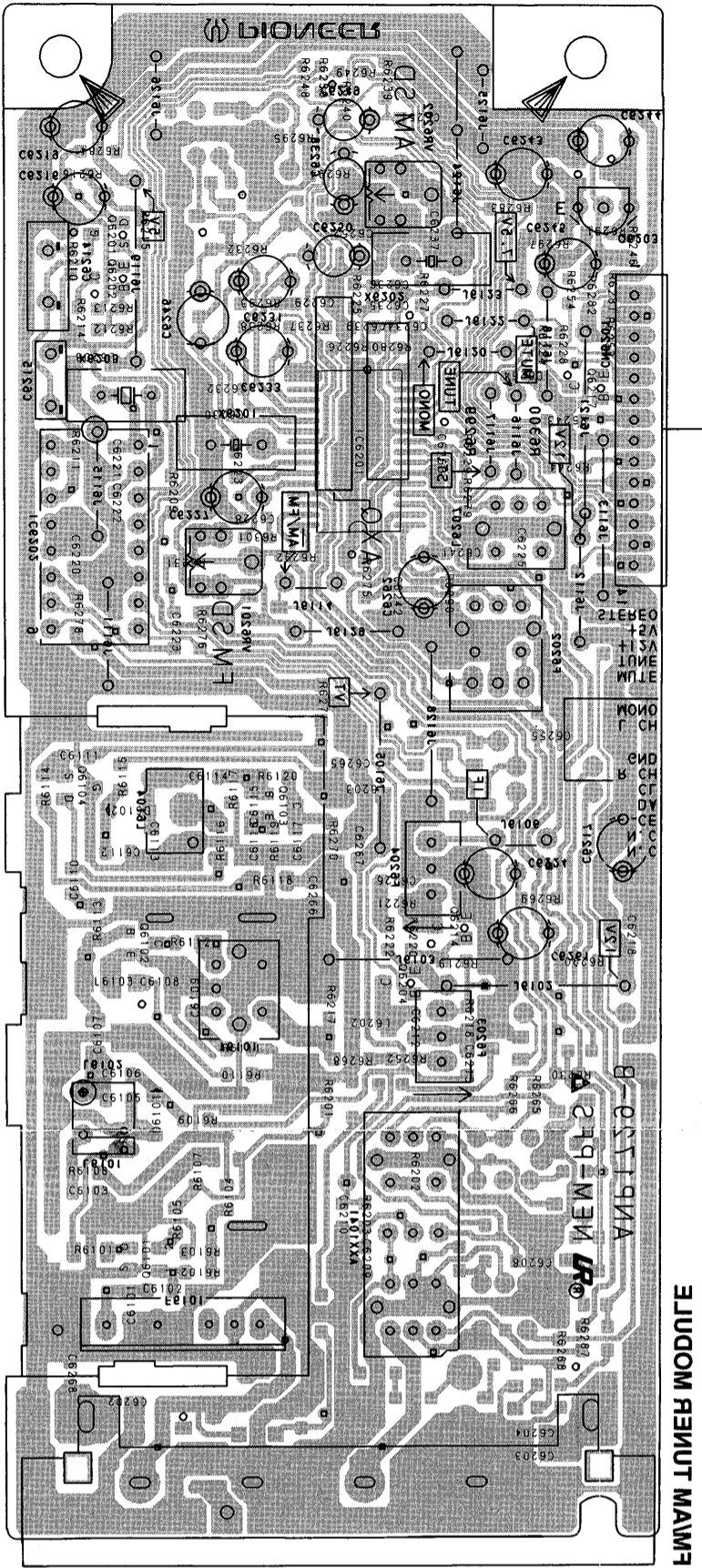
D

C

B

This diagram is viewed from the foil side.

00310 Yaza TA OT



SOS9RV

SOS9RV Q6201 Q6202 Q6217 IC6201

P30S80I

Q6103 Q6104

Q6214 Q6204 Q6102

Q6101

M1 АИИЕТИА ЛАИИИРЕТ

MA АИИЕТИА ЛАИИИРЕТ

5.3 AF ASSY, TRANS ASSY, REG. ASSY, SP SW ASSY and POWER SW ASSY

To FRONT ASSY
CN13

To FM/AM
TUNER MODULE
CN6201

Q262 Q261
Q263

To VR ASSY CN12
Q201 IC200
IC201

Q202

Q2

Q552 Q522
IC253 IC202

AF ASSY

Q4

Q554 Q524
Q604

Q3

Q553 Q521
Q622 Q602 Q621 Q601

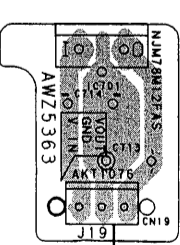
Q1

Q551 Q523
Q606 Q605

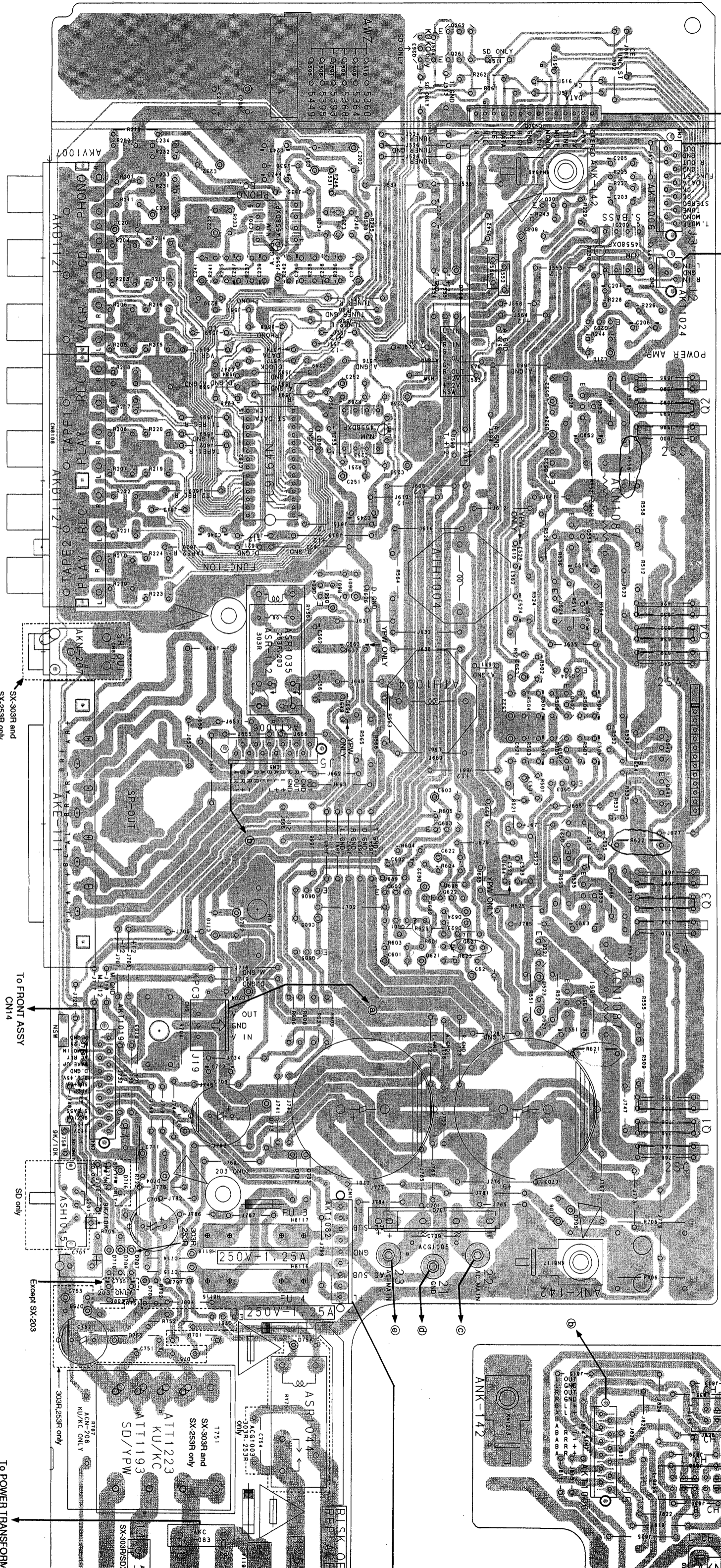
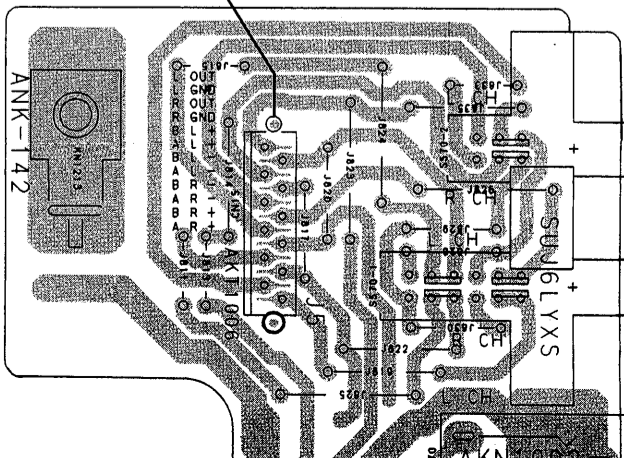
Q751

Note:
 • The parts specified as "SX-303R or 303R" are required for the SX-303R(KUXJ), KCKJ and SDXJ.
 • The parts specified as "SX-253R or 253R" are required for the SX-253R(KUXJ), KCKJ and YPWXJ.
 • The parts specified as "SX-203 or 203" are required for the SX-203(KUXJ) and SDXJ.
 • The parts specified as "K" are required for the SX-303R(KUXJ), SX-253R(KUXJ) and SX-203(KUXJ).
 • The parts specified as "K" are required for the SX-303R(KUXJ), SX-253R(KUXJ) and SX-203(KUXJ).
 • The parts specified as "K" are required for the SX-303R(KUXJ), SX-253R(KUXJ) and SX-203(KUXJ).
 • The parts specified as "SD" are required for the SX-303R(SDXJ) and SX-203(SDXJ).
 • The parts specified as "YPW" are required for the SX-253R(YPWXJ).

REG. ASSY



SP SW ASSY

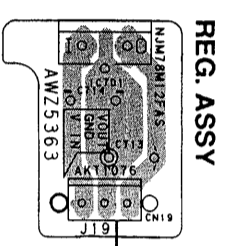


This diagram is viewed from the mounted parts side.

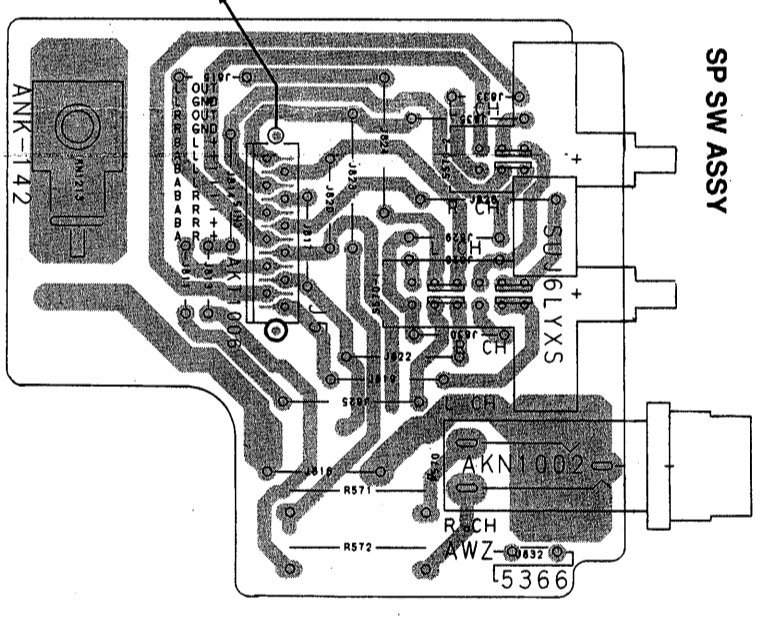
Note:

- The parts specified as 'SX-303R' or '303R' are required for the SX-303R/KUXJ/KCXJ and SDXJ.
- The parts specified as 'SX-253R' or '253R' are required for the SX-253R/KUXJ/KCXJ and YPWXJ.
- The parts specified as 'SX-203' or '203' are required for the SX-203/KUXJ and SDXJ.
- The parts specified as 'KC' are required for the SX-303R/KUXJ, SX-253R/KUXJ and SX-203R/KUXJ.
- The parts specified as 'SD' are required for the SX-303R/SDXJ, SX-253R/SDXJ.
- The parts specified as 'YPW' are required for the SX-303R/YPWJ and SX-253R/SDXJ.

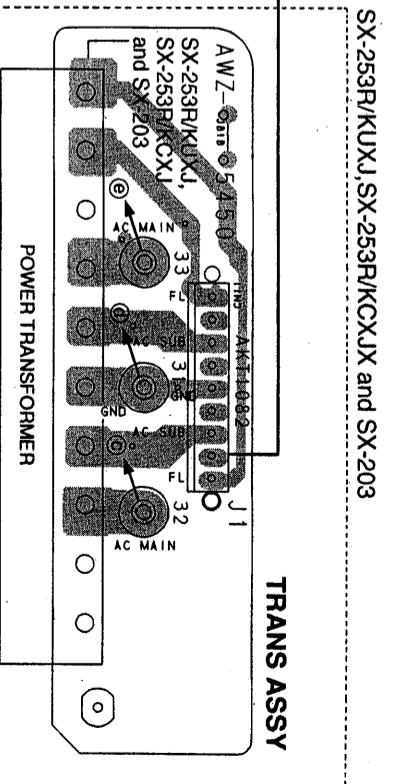
| | | | | | | | | |
|----|------|------|------|------|------|------|------|------|
| Q4 | Q504 | Q502 | Q542 | Q541 | Q523 | Q553 | Q521 | Q551 |
| Q3 | Q604 | Q501 | Q503 | Q603 | Q622 | Q602 | Q621 | Q601 |
| Q1 | Q605 | Q606 | Q603 | Q605 | Q751 | | | |



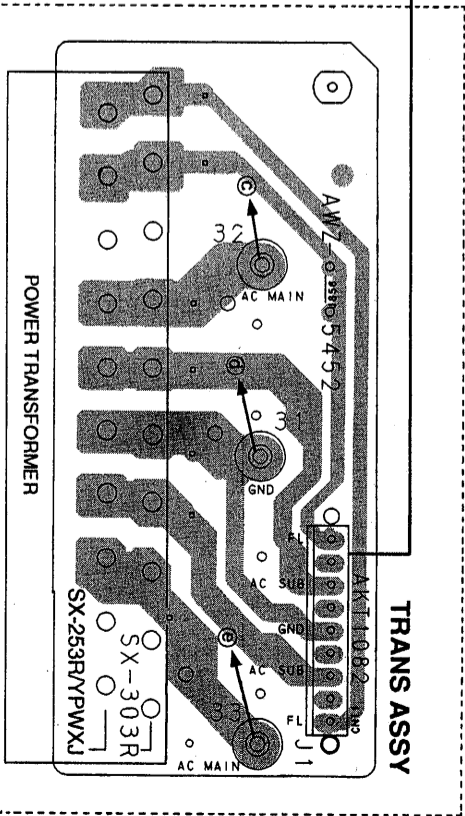
REG. ASSY



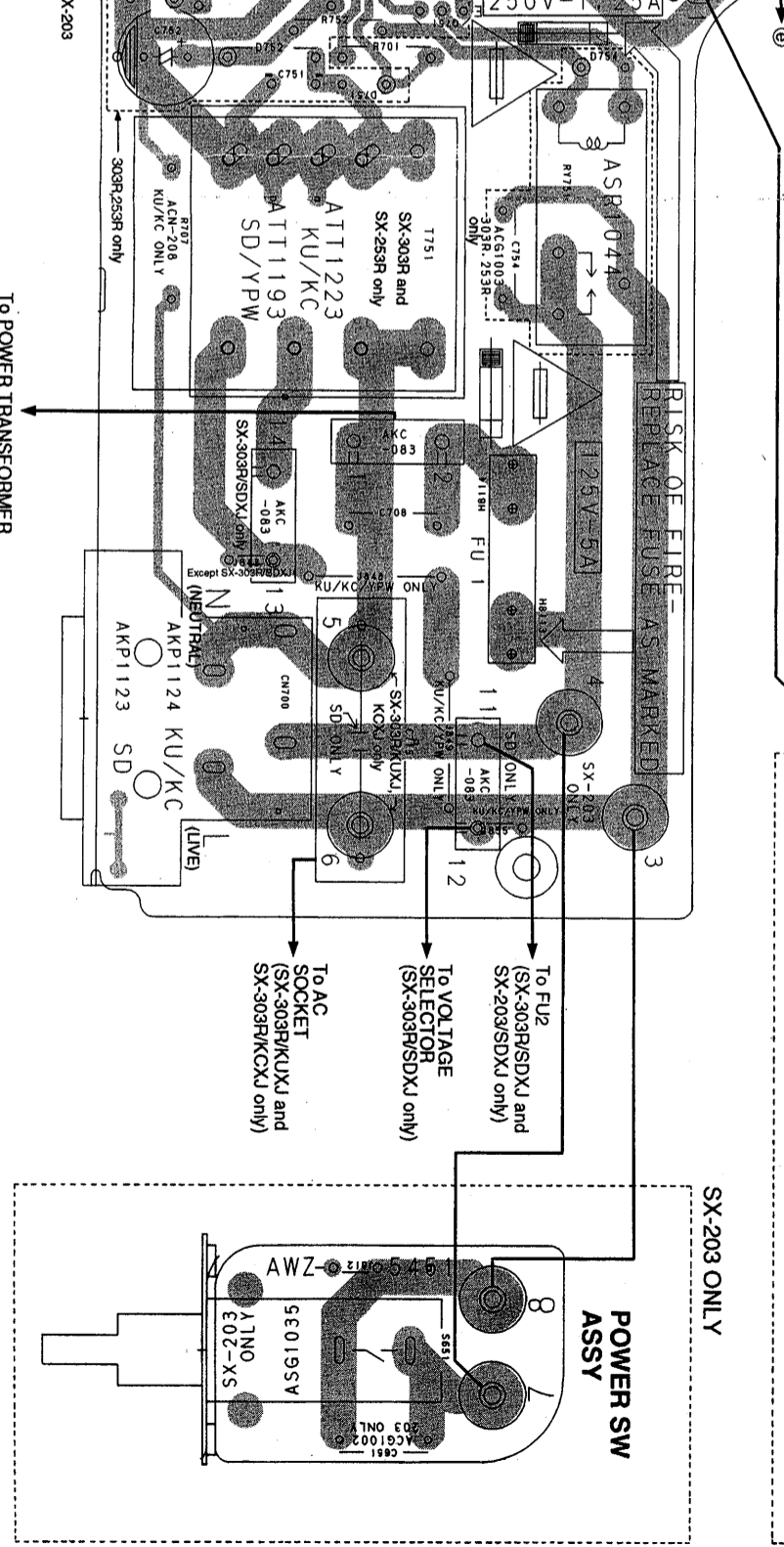
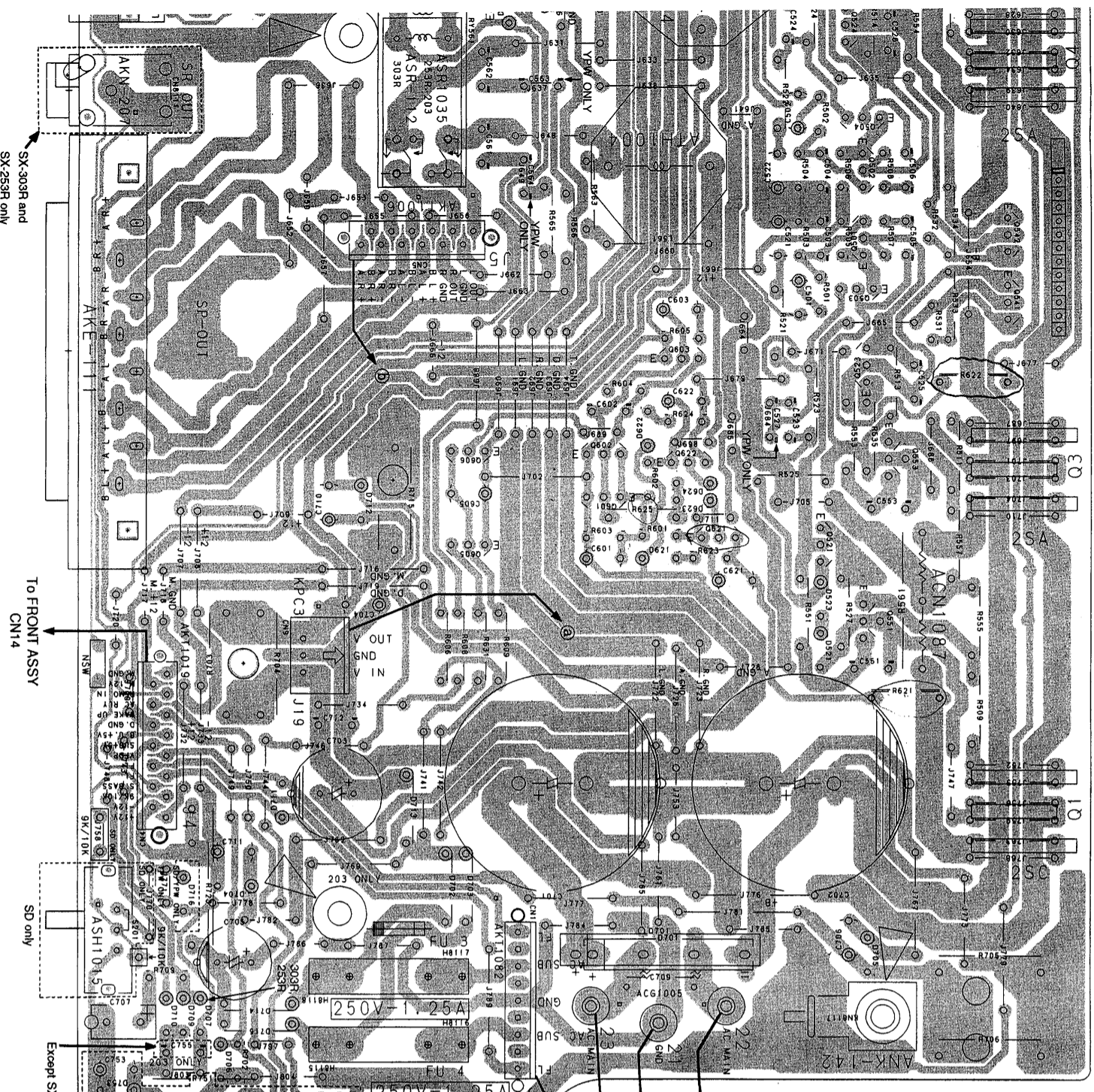
SP SW ASSY



TRANS ASSY

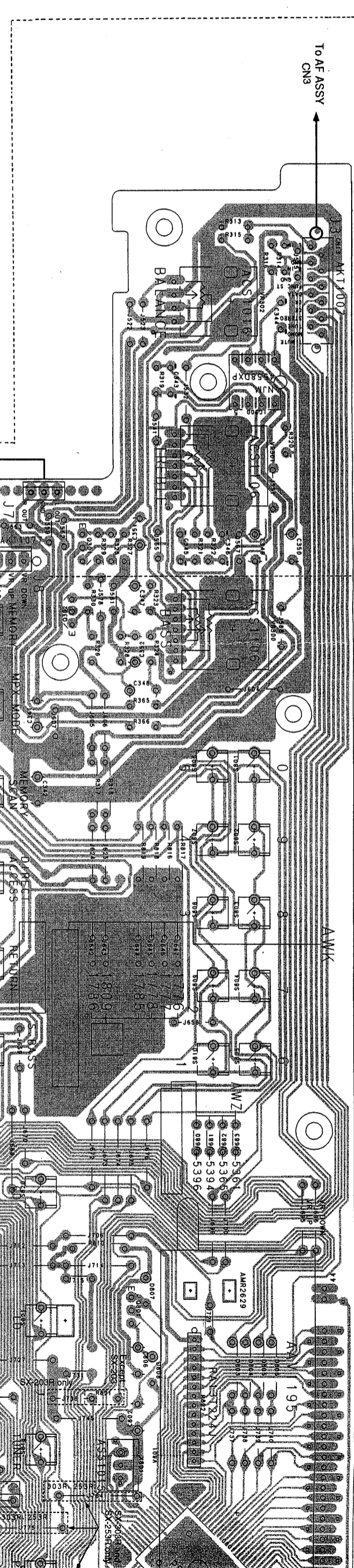


TRANS ASSY



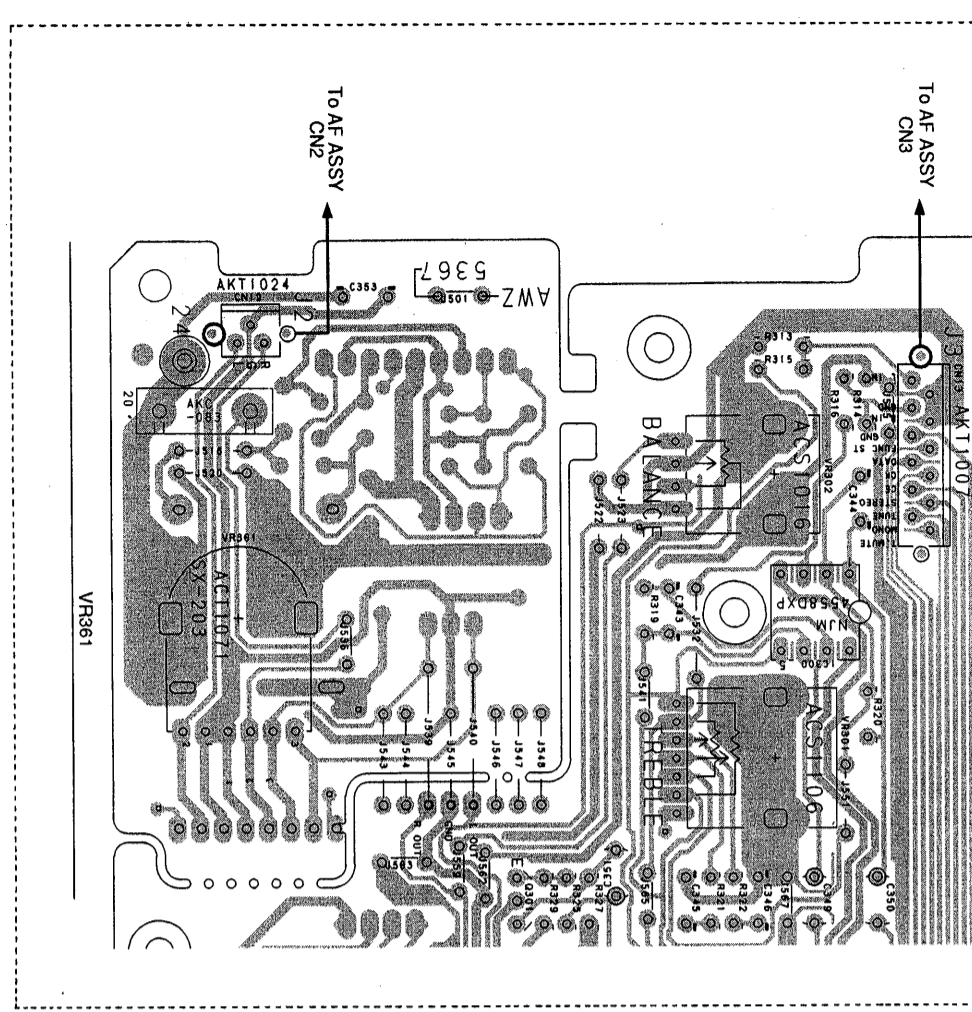
FRONT ASSY

For SX-303R and SX-253R



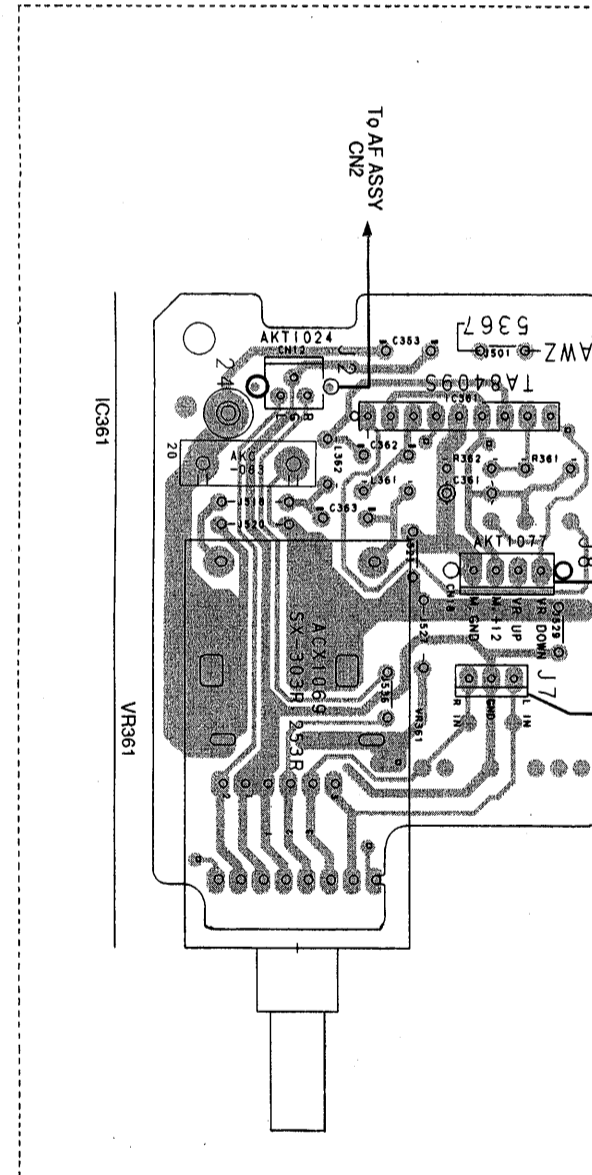
For SX-203

FRONT ASSY



SX-303R and SX-253R only

VR ASSY



Q801

IC801

Vino P32S-X2 bna P30E-X2

5060 5060

2080

1080

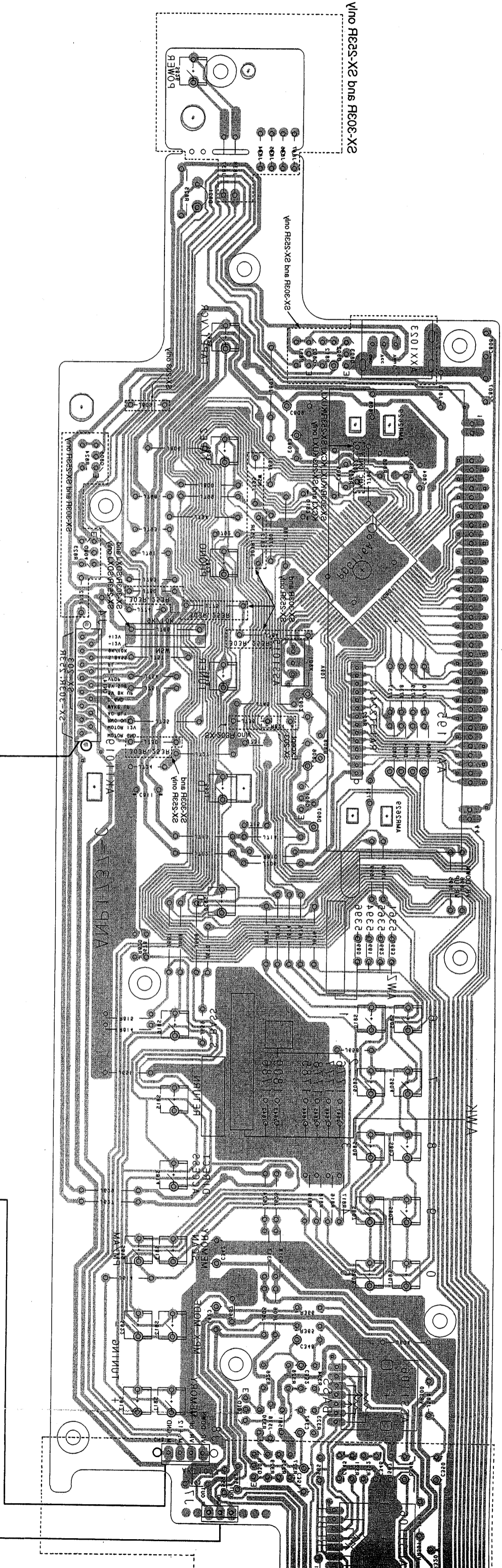
1080

1080

5060

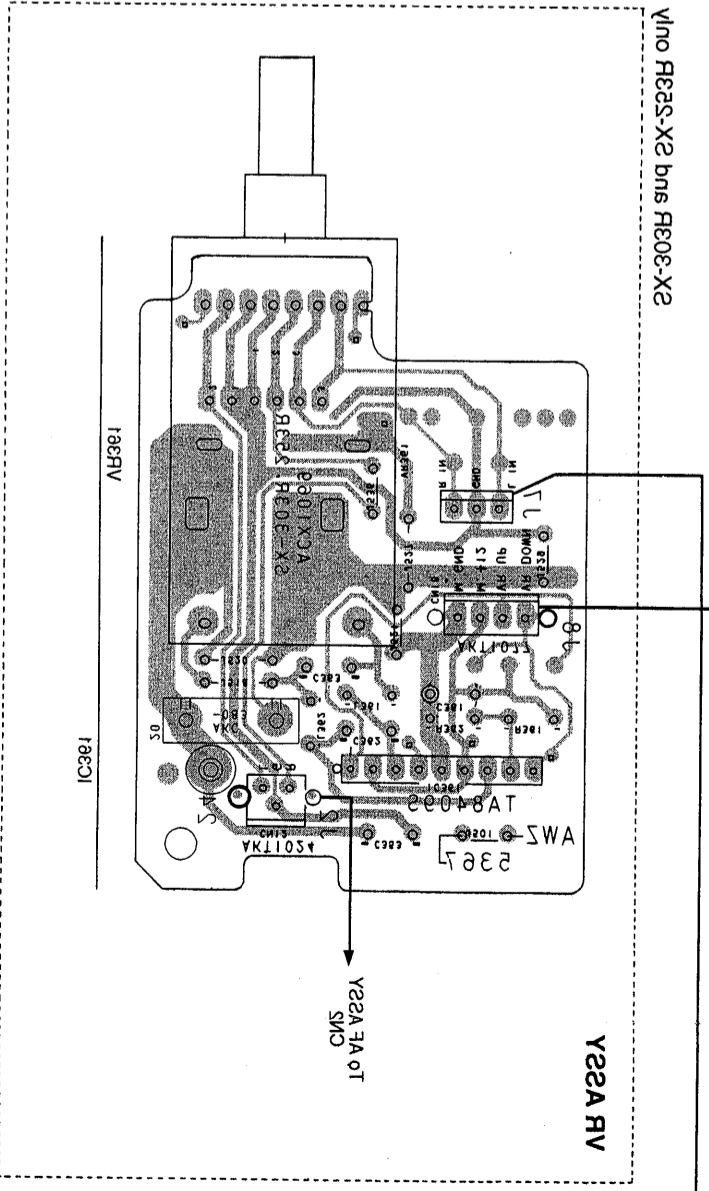
1080

1080V



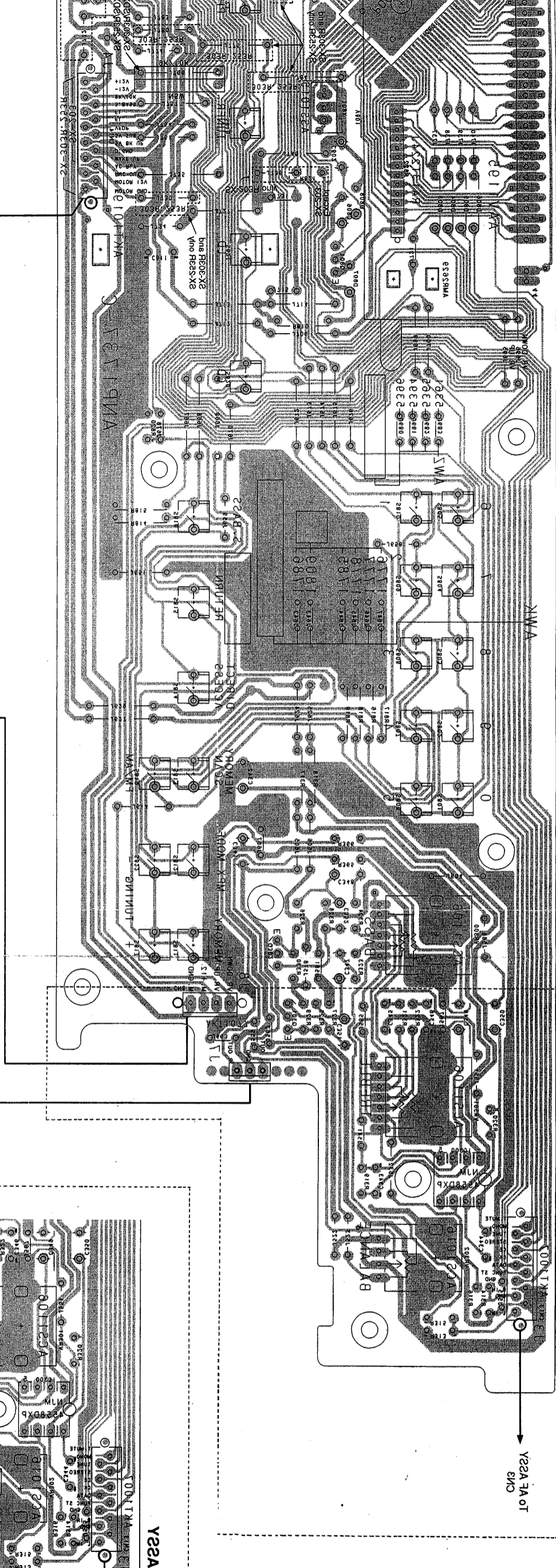
• This "P30E-X2" as built board should not be used for any other purpose.
 • The "P32S-X2" as built board should not be used for any other purpose.
 • The "305-X2" as built board should not be used for any other purpose.
 • The "P30E-X2" as built board should not be used for any other purpose.

This diagram is viewed from the foil side.



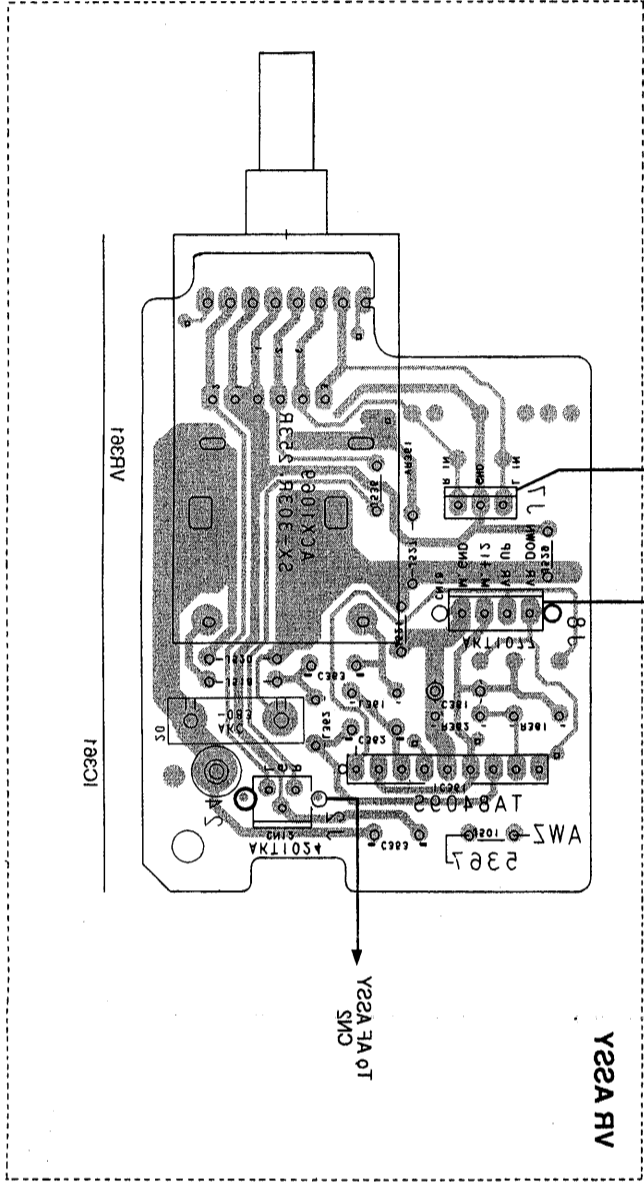
FRONT Y22A

IC800 IC801 IC802 IC803 IC804 IC805 IC806 IC807 IC808 IC809 IC810 IC811 IC812 IC813 IC814 IC815 IC816 IC817 IC818 IC819 IC820 IC821 IC822 IC823 IC824 IC825 IC826 IC827 IC828 IC829 IC830 IC831 IC832 IC833 IC834 IC835 IC836 IC837 IC838 IC839 IC840 IC841 IC842 IC843 IC844 IC845 IC846 IC847 IC848 IC849 IC850 IC851 IC852 IC853 IC854 IC855 IC856 IC857 IC858 IC859 IC860 IC861 IC862 IC863 IC864 IC865 IC866 IC867 IC868 IC869 IC870 IC871 IC872 IC873 IC874 IC875 IC876 IC877 IC878 IC879 IC880 IC881 IC882 IC883 IC884 IC885 IC886 IC887 IC888 IC889 IC890 IC891 IC892 IC893 IC894 IC895 IC896 IC897 IC898 IC899 IC900



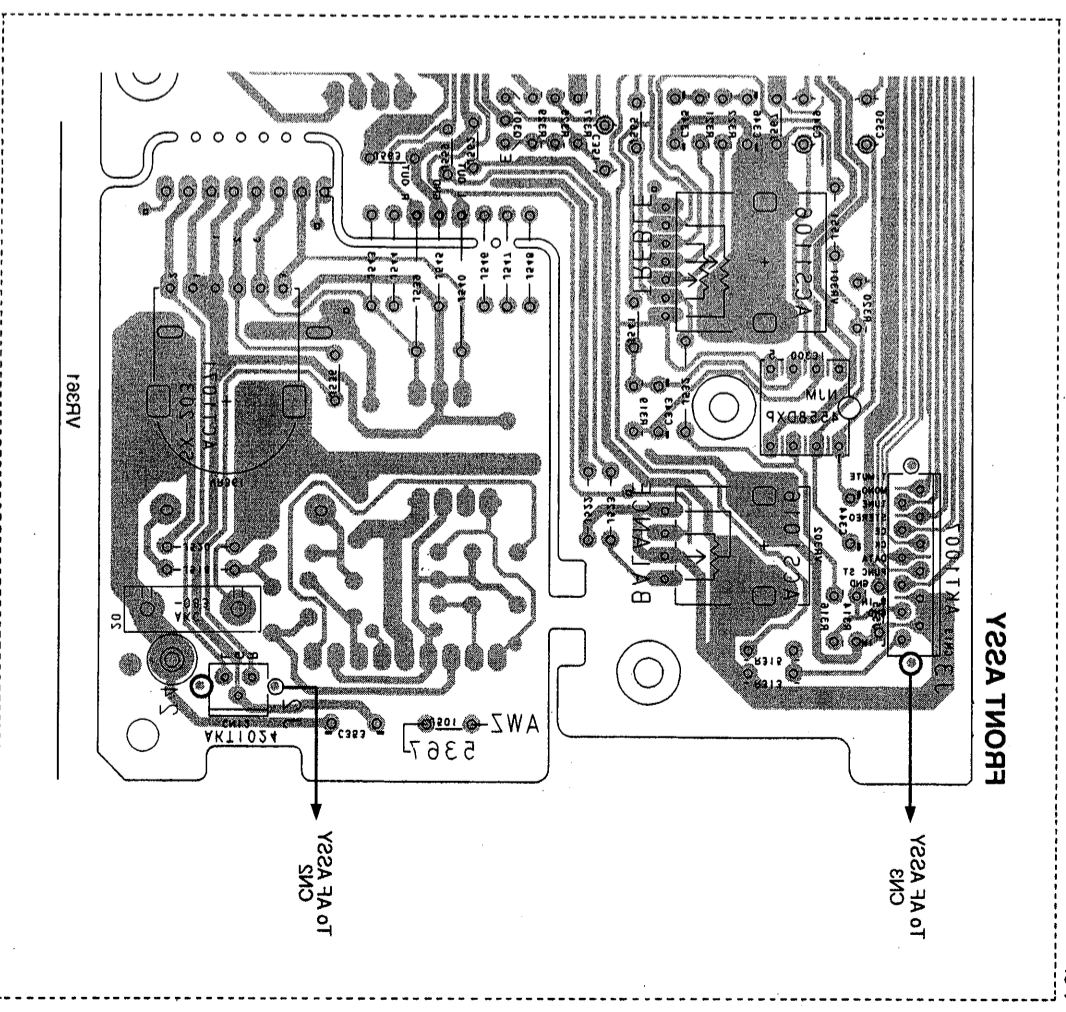
Y22A T100F
CMS

Y22A T100F
CMS



bus R00E-X2
bus R00C-X2

Y22A RV
CMS
TO VE A22V



Y22A T100F
CMS
TO VE A22V

Y22A T100F
CMS

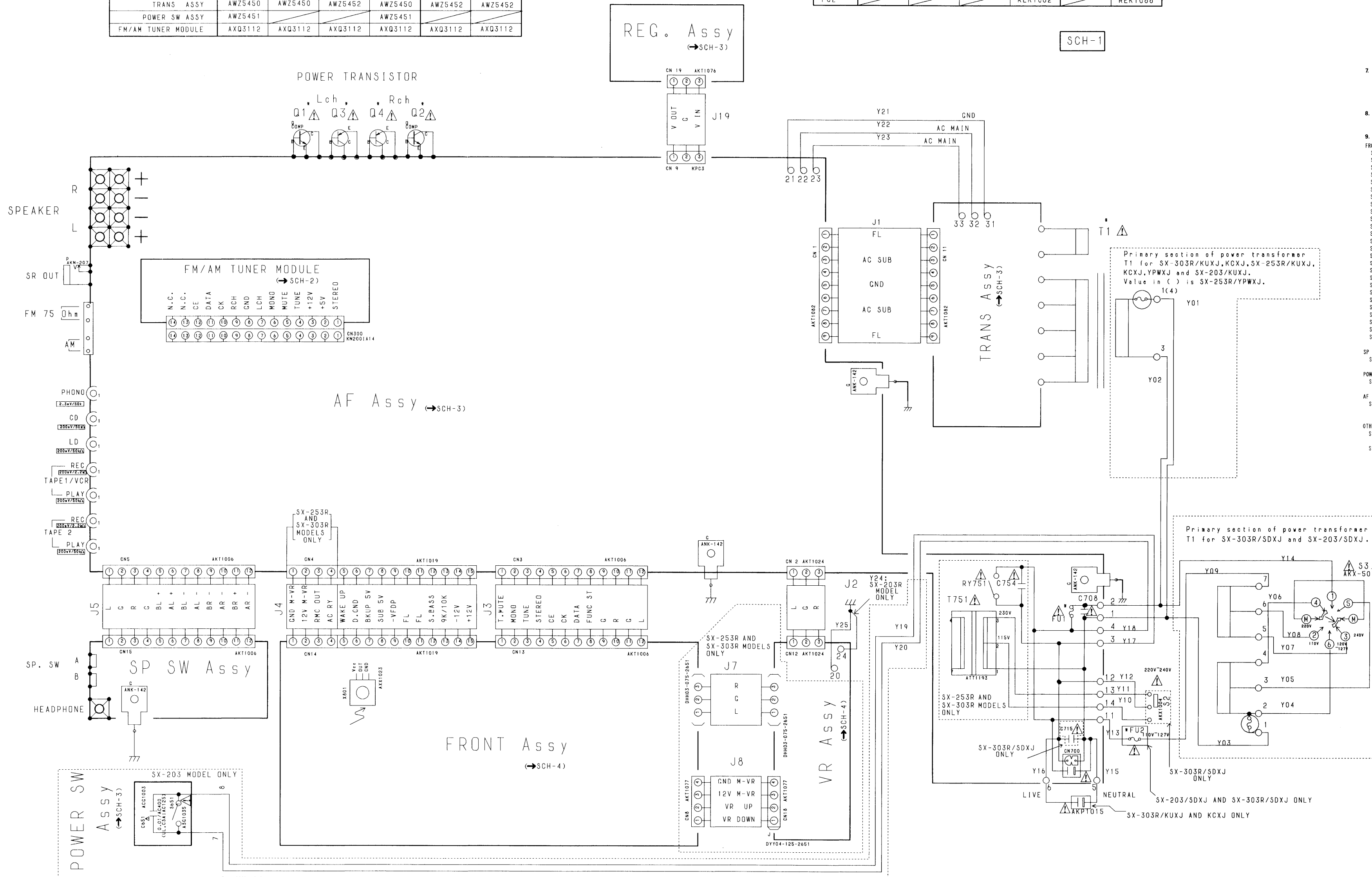
5. SCHEMATIC AND PCB CONNECTION DIAGRAMS

5.1 OVERALL WIRING DIAGRAM

| MODELS | SX-203 /KUXJ | SX-253R /KUXJ | SX-303R /KUXJ | SX-203 /SDXJ | SX-253R /YPMXJ | SX-303R /SDXJ |
|--------------------|--------------|---------------|---------------|--------------|----------------|---------------|
| ASSEMBLIES | | | | | | |
| AF ASSY | AWZ5360 | AWZ5364 | AWZ5368 | AWZ5393 | AWZ5449 | AWZ5395 |
| FRONT ASSY | AWZ5361 | AWZ5365 | AWZ5365 | AWZ5394 | AWZ5365 | AWZ5396 |
| REG. ASSY | AWZ5363 | AWZ5363 | AWZ5363 | AWZ5363 | AWZ5363 | AWZ5363 |
| SP SW ASSY | AWZ5366 | AWZ5366 | AWZ5366 | AWZ5366 | AWZ5366 | AWZ5366 |
| VR ASSY | | AWZ5367 | AWZ5367 | | AWZ5367 | AWZ5367 |
| TRANS ASSY | AWZ5450 | AWZ5450 | AWZ5452 | AWZ5450 | AWZ5452 | AWZ5452 |
| POWER SW ASSY | AWZ5451 | | | AWZ5451 | | |
| FM/AM TUNER MODULE | AXQ3112 | AXQ3112 | AXQ3112 | AXQ3112 | AXQ3112 | AXQ3112 |

Note:
 -The parts specified as "SX-303R MODEL" are required for the SX-303R/KUXJ, KCXJ and SDXJ.
 -The parts specified as "SX-253R MODEL" are required for the SX-253R/KUXJ, KCXJ and YPMXJ.
 -The parts specified as "SX-203 MODEL" are required for the SX-203/KUXJ and SDXJ.

| MODELS | SX-203 /KUXJ | SX-253R /KUXJ | SX-303R /KUXJ | SX-203 /SDXJ | SX-253R /YPMXJ | SX-303R /SDXJ |
|---------|--------------|---------------|---------------|----------------|-----------------|---------------|
| NUMBERS | | | | | | |
| Q1, Q2 | 2SC4689 | 2SC4689 | 2SC3281 | 2SC4689 | 2SC4689 | 2SC3281 |
| Q3, Q4 | 2SA1804 | 2SA1804 | 2SA1302 | 2SA1804 | 2SA1804 | 2SA1302 |
| T1 | ATS1526 | ATS1526 | ATS1524 | ATS1527 | ATS1543 | ATS1525 |
| FU1 | REK1067 (SA) | REK1067 (SA) | AEK1002 (8A) | REK1062 (2.5A) | AEK-510 (T1.6A) | REK1066 (4A) |
| FU2 | | | | REK1062 | | REK1066 |



NOTE FOR SCHEMATIC DIAGRAMS Type 1A

1. When ordering service parts, be sure to refer to "PARTS LIST OF EXPLODED VIEWS" or "PCB PARTS LIST".

2. Since these are basic circuits, some parts of them or the values of some components may be changed for improvement.

3. **RESISTORS:**
 Unit: k: kΩ, M: MΩ, or Ω unless otherwise noted.
 Rated power: 1/4W, 1/6W, 1/8W, 1/10W unless otherwise noted.
 Tolerance: (F): ±1%, (G): ±2%, (K): ±10%, (M): ±20% or ±5% unless otherwise noted.

4. **CAPACITORS:**
 Unit: p: pF or μF unless otherwise noted.
 Ratings: capacitor (μF)/voltage (V) unless otherwise noted.
 Rated voltage: 50V except for electrolytic capacitors.

5. **COILS:**
 Unit: m: mH or μH unless otherwise noted.

6. **VOLTAGE AND CURRENT:**
AF AMPLIFIER SECTION:
 V: Signal voltage at rated output.
 or - V: DC voltage (V) at no input signal unless otherwise noted. Value in () is DC voltage at rated power.
TUNER SECTION:
 V: Signal voltage at FM 1kHz, 100% MOD.
 or - V: DC voltage (V) at no input signal unless otherwise noted. Value in () is DC voltage at rated power.
 mA or - mA: DC current at no input signal unless otherwise noted.

7. **OTHERS:**
 • ⊙ or ⊚: Adjusting point.
 • ⊠: Measurement point.
 • The Δ mark found on some component parts indicates the importance of the safety factor of the parts. Therefore, when replacing, be sure to use parts of identical designation.

8. **SCH-□ ON THE SCHEMATIC DIAGRAM:**
 • SCH-□ indicates the drawing number of the schematic diagram. (SCH stands for schematic diagram.)

9. **SWITCHES** (Underline indicates switch position):

FRONT ASSY
 S801: STATION CALL 0
 S802: STATION CALL 9
 S803: STATION CALL 8
 S804: STATION CALL 7
 S805: STATION CALL 6
 S806: STATION CALL 5
 S807: STATION CALL 4
 S808: STATION CALL 3
 S809: STATION CALL 2
 S810: STATION CALL 1
 S811: MEMORY
 S812: MPX MODE
 S813: MEMORY SCAN
 S814: DIRECT ACCESS
 S815: RETURN
 S816: S. BASS
 S817: TUNING +
 S818: TUNER
 S819: FM/AM
 S820: CD
 S821: LD
 S822: TUNING -
 S823: PHONO
 S824: TAPE MONITOR
 S825: TAPE/VCR
 S826: POWER (SX-303R and SX-253R only)

SP SW ASSY
 S570: SPEAKERS A: ON-OFF B: ON-OFF

POWER SW ASSY (SX-203 only)
 S651: POWER ON-OFF

AF ASSY
 S701: CHANNEL STEP (SX-303R/SDXJ and SX-203/SDXJ only)
 50kHz, 9kHz/100kHz, 19kHz

OTHERS
 S2: VOLTAGE SELECTOR (SX-303R/SDXJ only)
 110-120V/220-240V
 S3: VOLTAGE SELECTOR (SX-303R/SDXJ and SX-203/SDXJ only)
 110V/120-127V/220V/240V

SCH-1 OVERALL WIRING DIAGRAM

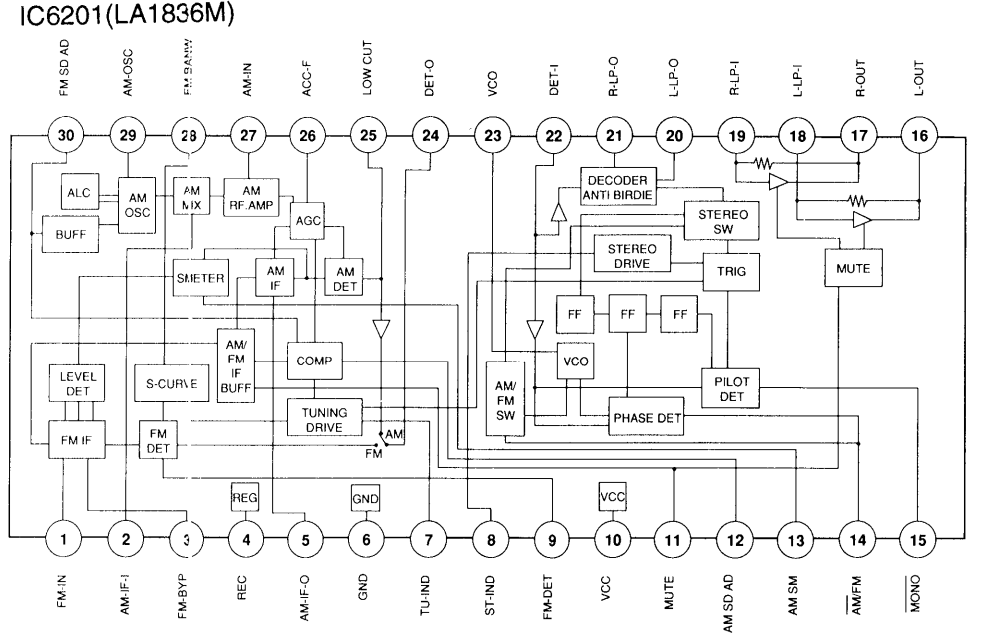
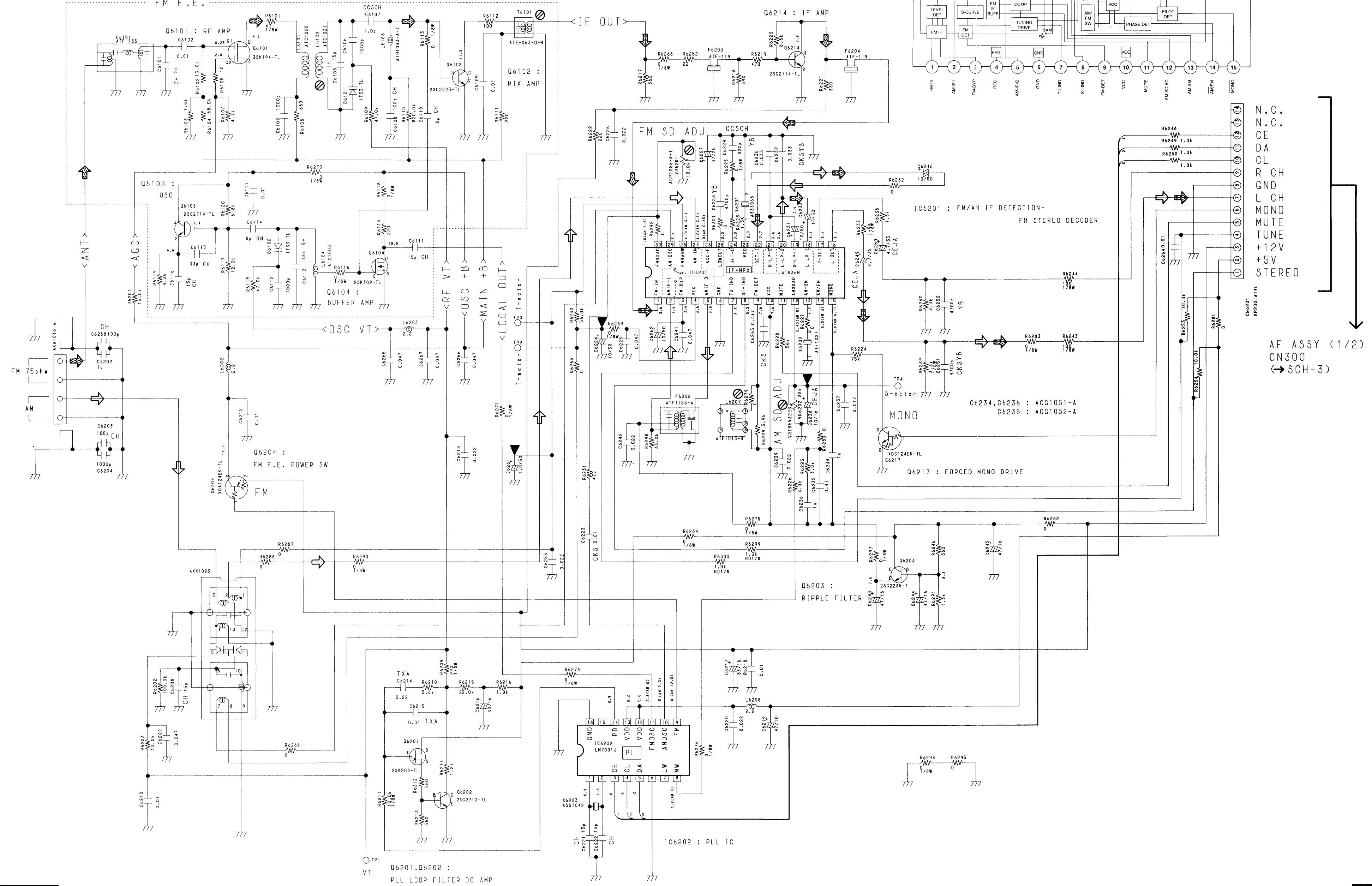
OVERALL WIRING DIAGRAM SCH-1

5.2 FM/AM TUNER MODULE

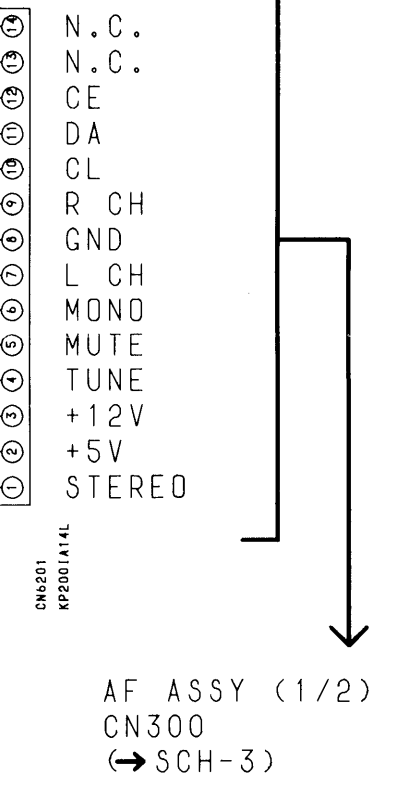
A
B
C
D
E
F

FM/AM TUNER MODULE (AXQ3112)

↗: FM signal route
↘: AM signal route



SCH-2

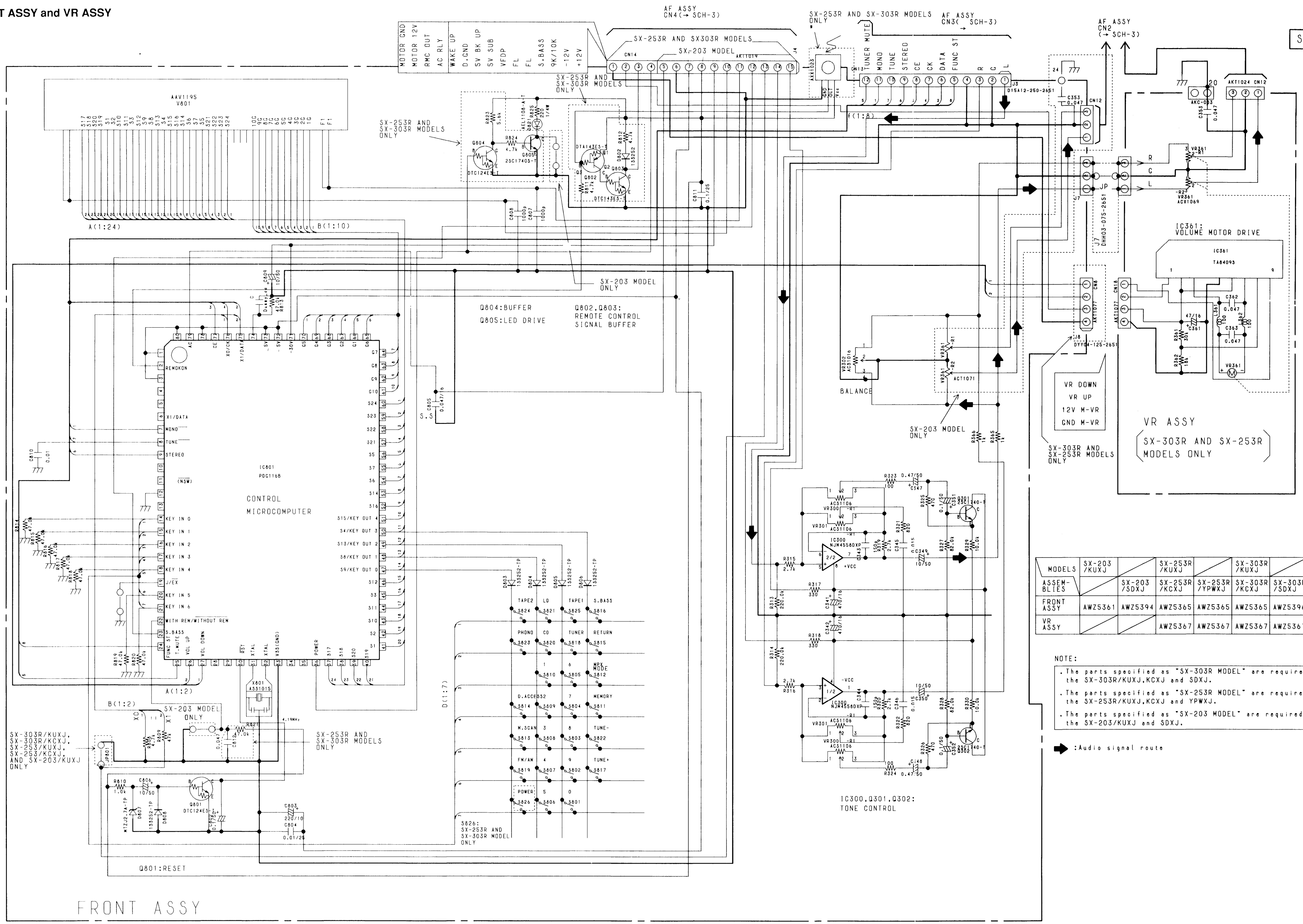


A
B
C
D
E
F

SCH-2 FM/AM TUNER MODULE

FM/AM TUNER MODULE SCH-2

5.4 FRONT ASSY and VR ASSY



| MODELS | SX-203 /KUXJ | SX-253R /KUXJ | SX-303R /KUXJ |
|------------|-----------------|------------------|------------------|
| ASSEMBLIES | SX-203 /SDXJ | SX-253R /KXCJ | SX-303R /KXCJ |
| FRONT ASSY | AWZ5361 | AWZ5394 | AWZ5365 |
| VR ASSY | | AWZ5367 | AWZ5367 |

NOTE:
 . The parts specified as "SX-303R MODEL" are required for the SX-303R/KUXJ, KXCJ and SDXJ.
 . The parts specified as "SX-253R MODEL" are required for the SX-253R/KUXJ, KXCJ and YPWXJ.
 . The parts specified as "SX-203 MODEL" are required for the SX-203/KUXJ and SDXJ.

➔ : Audio signal route

FRONT ASSY

DIODES
 Other diodes (not noted) are 13S252

SCH-4 FRONT ASSY VR ASSY

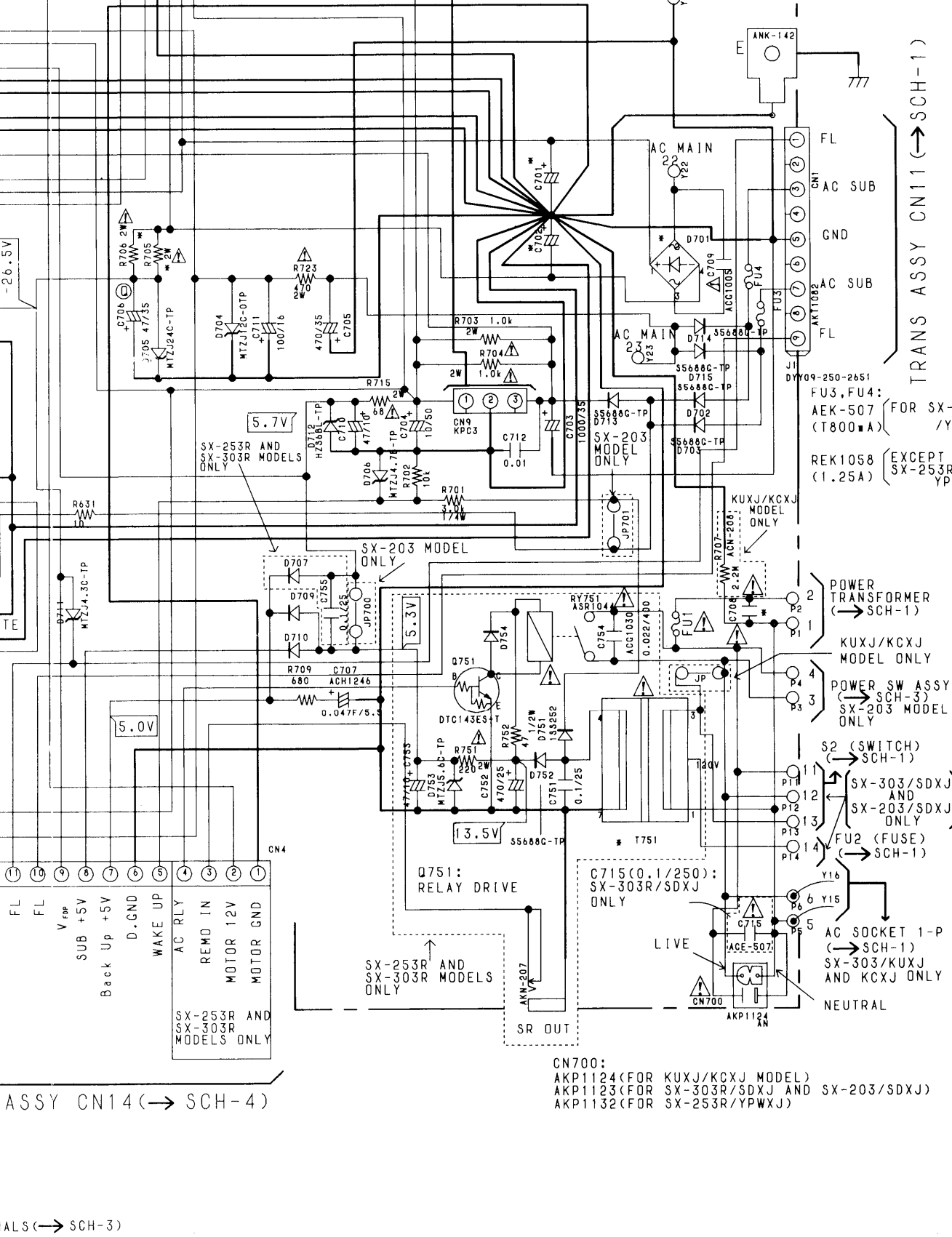
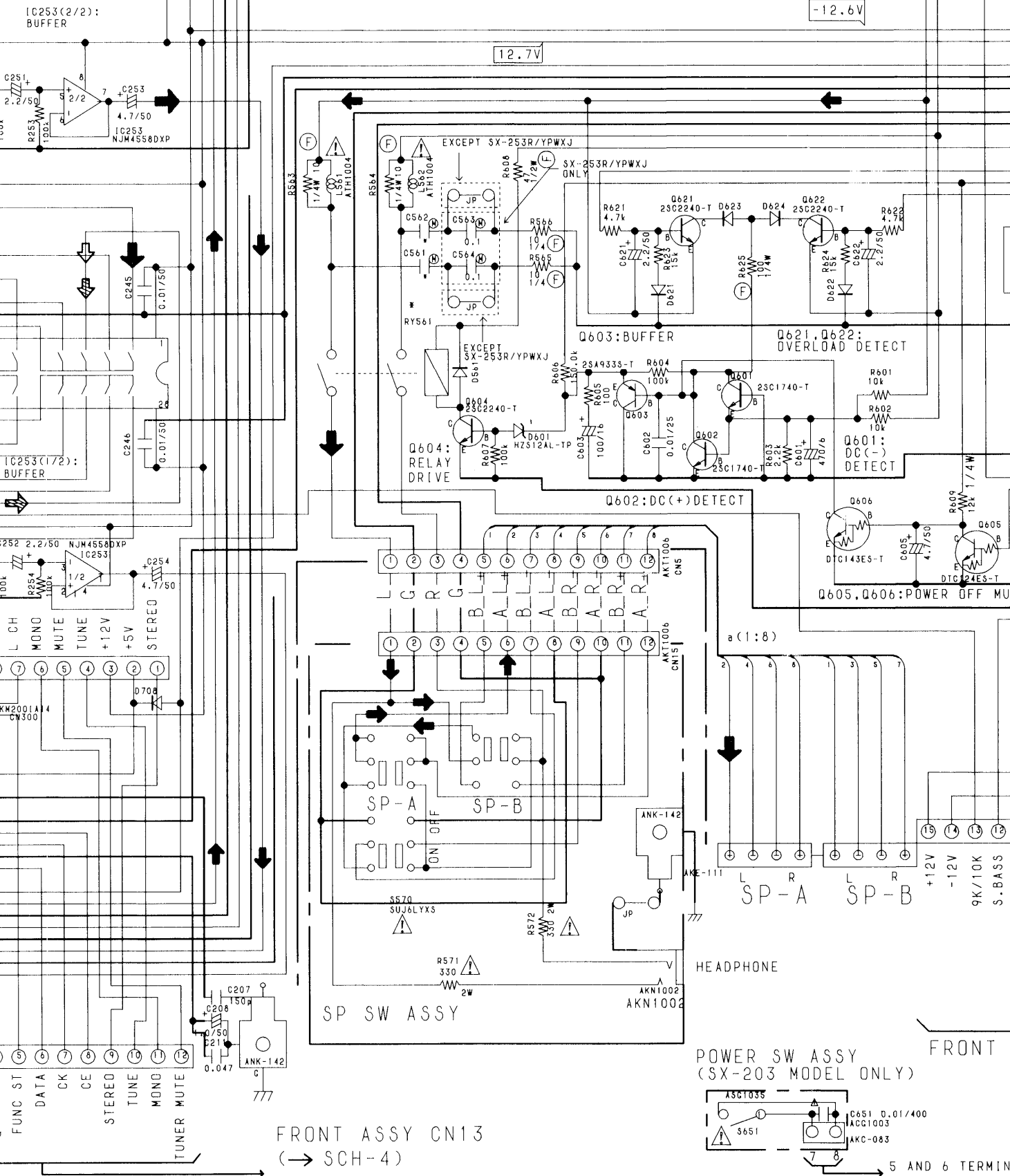
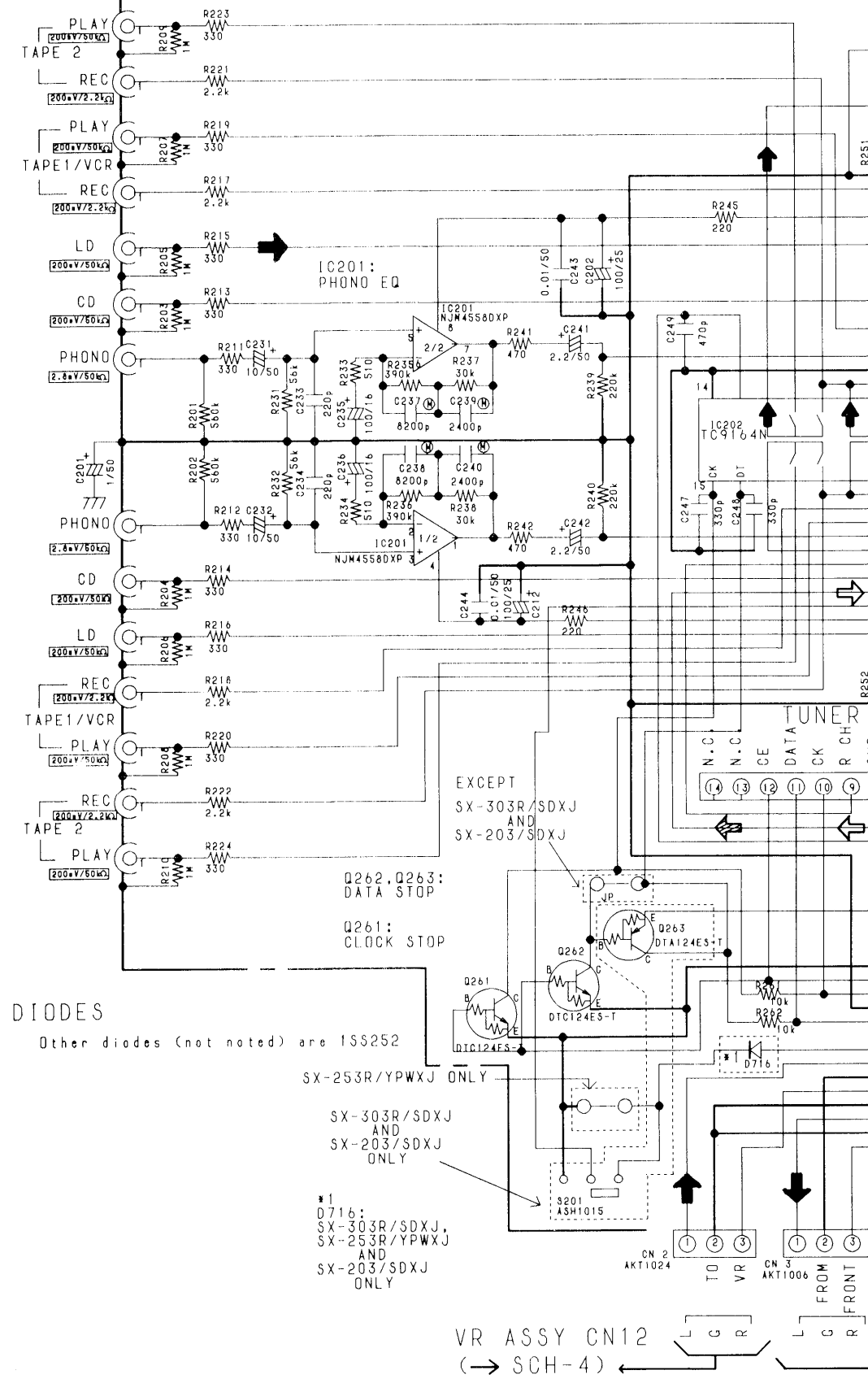
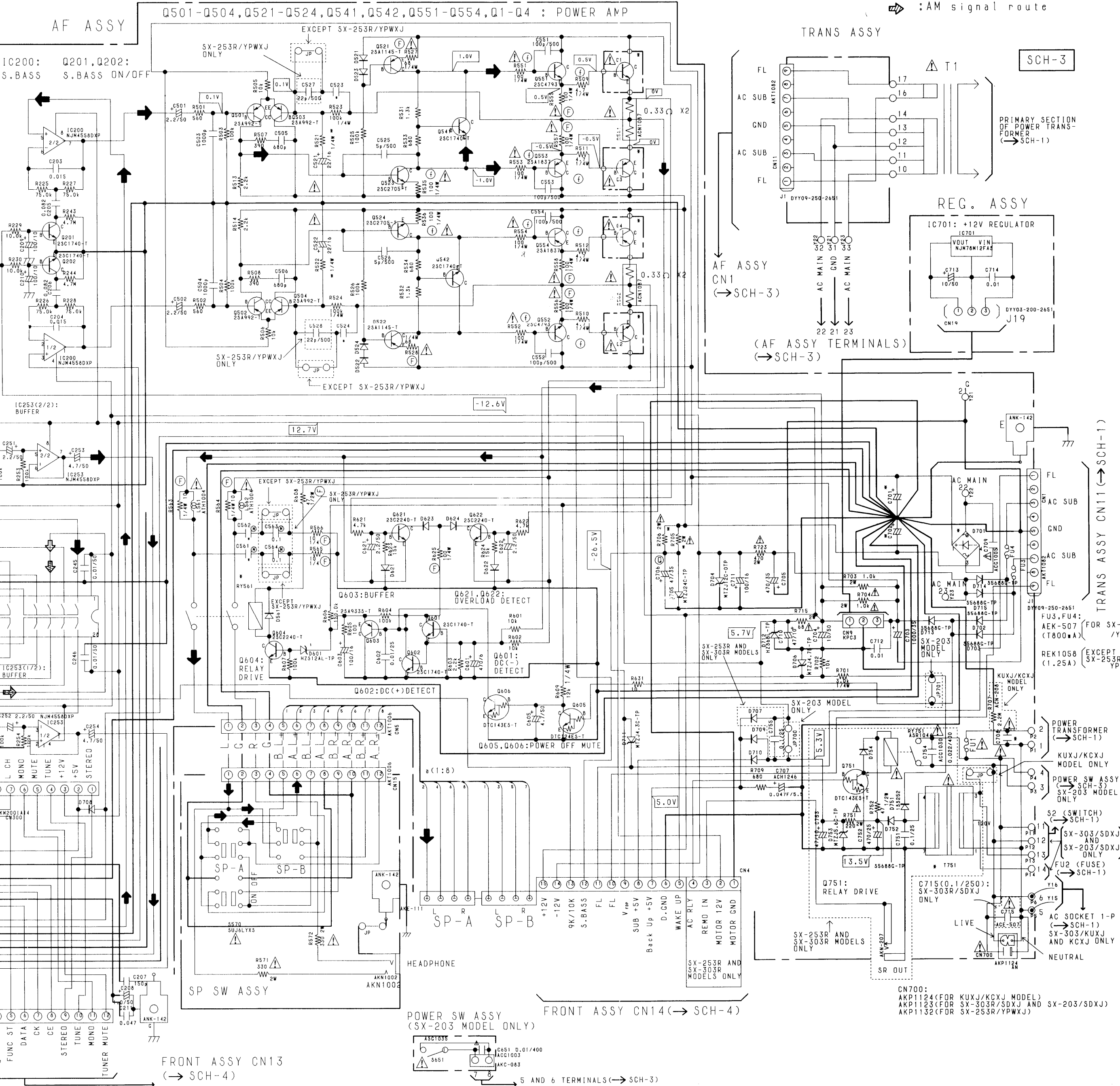
FRONT ASSY VR ASSY SCH-4

Note:
 The parts specified as "SX-303R MODEL" are required for the SX-303R/KUXJ, KCXJ and SDXJ.
 The parts specified as "SX-253R MODEL" are required for the SX-253R/KUXJ, KCXJ and YPWXJ.
 The parts specified as "SX-203 MODEL" are required for the SX-203/KUXJ and SDXJ.
 The parts specified as "SX-203 MODEL" are required for the SX-203/KUXJ, KCXJ and YPWXJ.

- ➡ : Audio signal route
- ⇨ : FM signal route
- ⇩ : AM signal route

| MODELS | SX-203 /KUXJ | SX-253R /KUXJ | SX-303R /KUXJ | SX-303R /SDXJ |
|----------------|--------------|---------------|---------------|---------------|
| AF ASSY | AWZ5360 | AWZ5393 | AWZ5364 | AWZ5449 |
| SP SWITCH ASSY | AWZ5366 | AWZ5366 | AWZ5366 | AWZ5366 |
| TRANS ASSY | AWZ5450 | AWZ5450 | AWZ5452 | AWZ5452 |
| REC. ASSY | AWZ5363 | AWZ5363 | AWZ5363 | AWZ5363 |
| POWER SW ASSY | AWZ5451 | AWZ5451 | | |

| MODELS | SX-203 /KUXJ | SX-253R /KUXJ | SX-253R /KUXJ | SX-253R /YPWXJ | SX-303R /KUXJ | SX-303R /SDXJ |
|---------|--------------------|---------------------|--------------------|--------------------|---------------------|---------------------|
| NUMBERS | | | | | | |
| 523,524 | 12P | 12P | 12P | 27P | 12P | 12P |
| 561,562 | 0.047 | 0.047 | 0.047 | 0.1 | 0.047 | 0.047 |
| 701,702 | ACH1044 (8200/63) | ACH1044 (8200/63) | ACH1044 (8200/63) | ACH1044 (8200/71) | ACH1204 (8200/71) | ACH1204 (8200/71) |
| 708 | ACC1003 (0.01/400) | ACC1030 (0.022/400) | ACC1003 (0.01/400) | ACC1003 (0.01/400) | ACC1030 (0.022/400) | ACC1030 (0.022/400) |
| D 701 | D35BA20 | D35BA20 | D35BA20 | D35BA20 | D55B20F | D55B20F |
| 521,522 | 910 | 910 | 910 | 910 | 750 | 750 |
| R 705 | 3.3K/2W | 5.3K/2W | 5.3K/2W | 3.3K/2W | 4.7K/2W | 4.7K/2W |
| 706 | 2.7K/2W | 2.7K/2W | 2.7K/2W | 2.7K/2W | 4.7K/2W | 4.7K/2W |
| 715 | 68/2W | 68/2W | 68/2W | 68/3W | 68/2W | 68/2W |
| RY 561 | ASR1035 | ASR1035 | ASR1035 | ASR1035 | ASR-112 | ASR-112 |
| T 751 | ATT1223 | ATT1223 | ATT1193 | ATT1223 | ATT1193 | ATT1193 |



SCH-3 AF ASSY

AF ASSY SCH-3