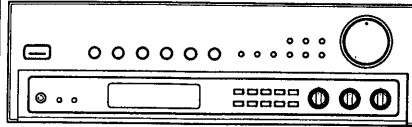


875

**PIONEER**  
The Art of Entertainment

# Service Manual



ORDER NO.  
ARZ2844

STEREO RECEIVER

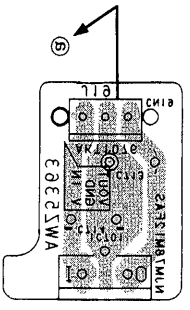
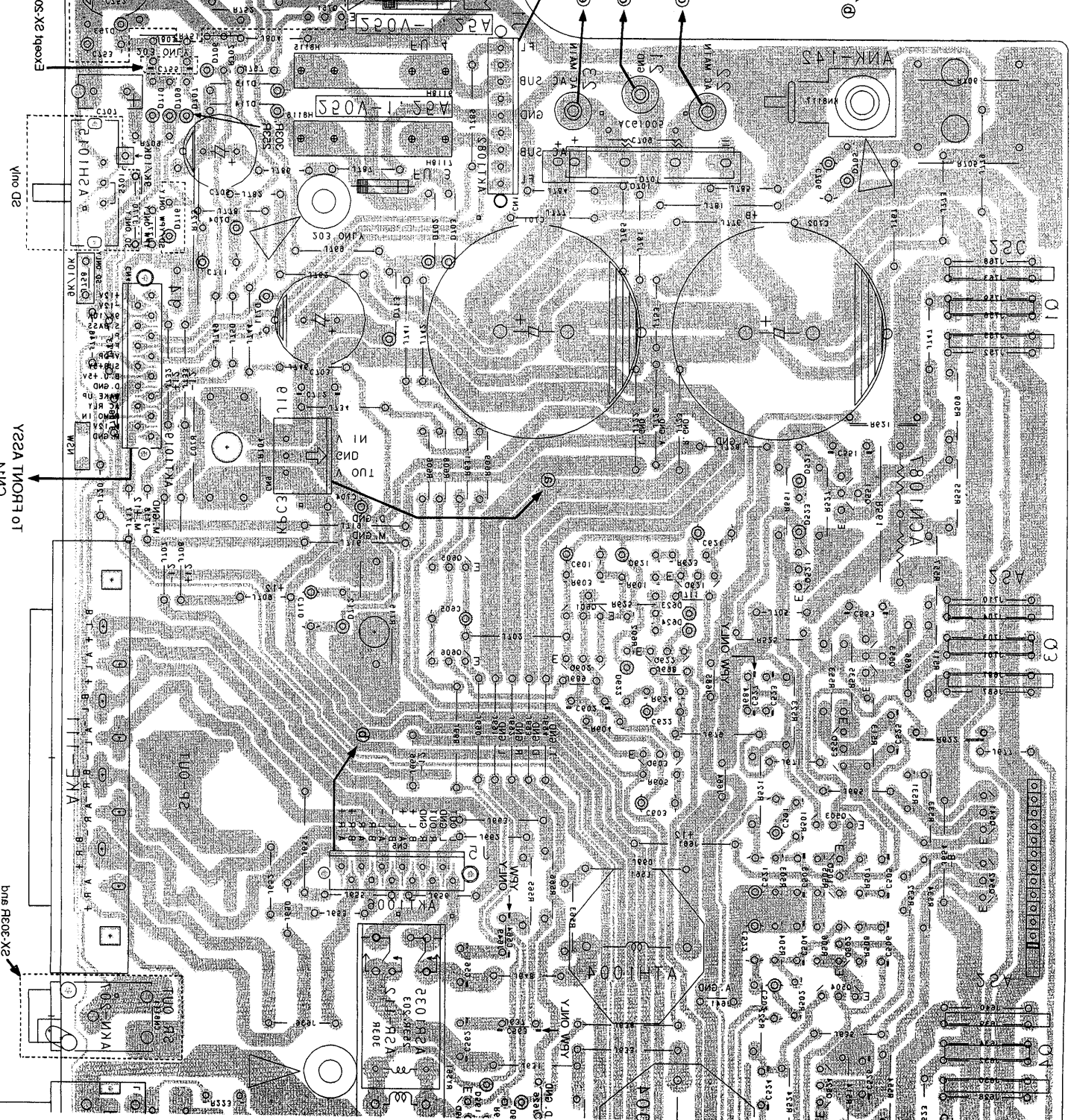
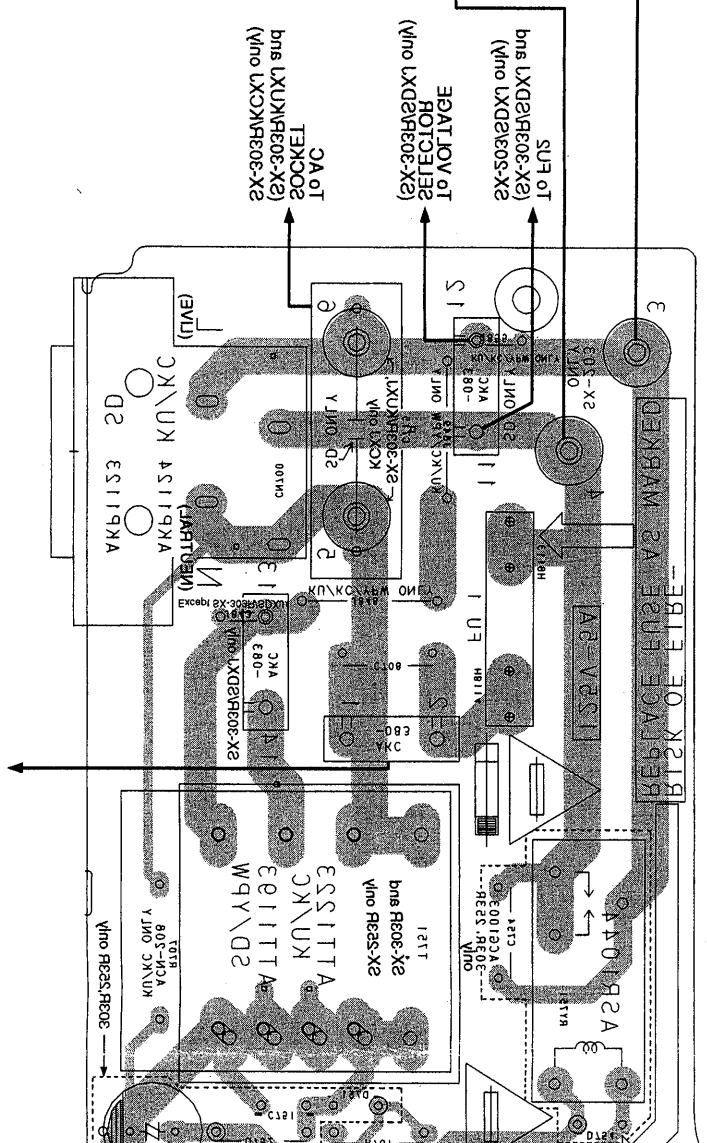
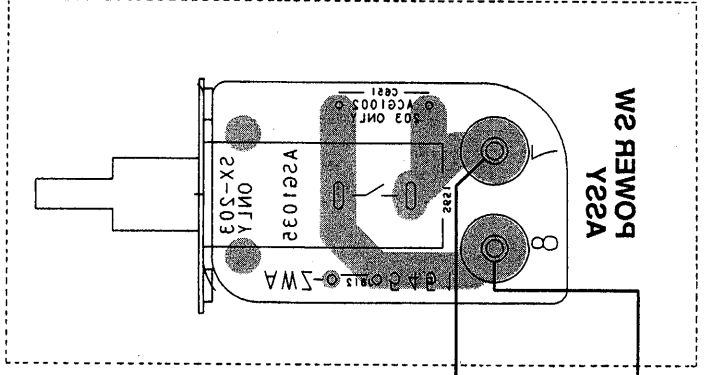
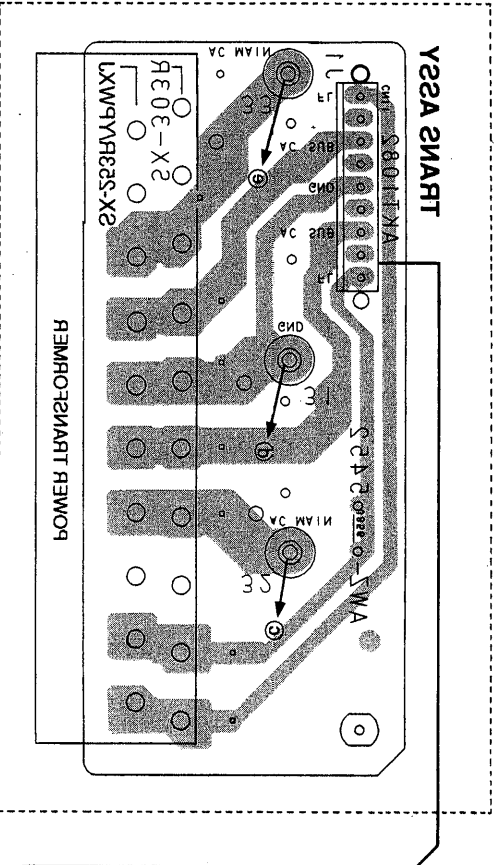
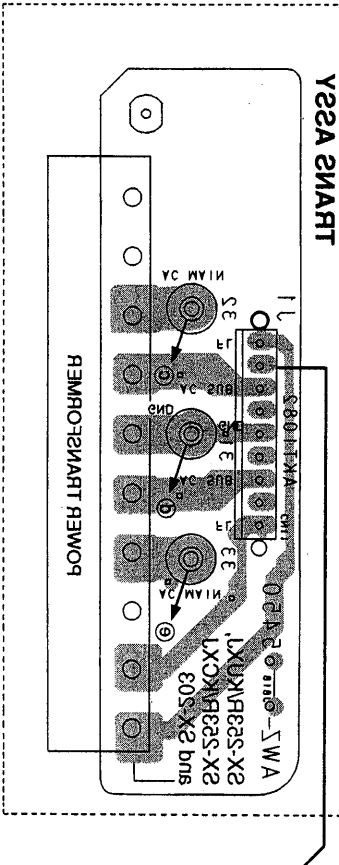
# SX-303R

## SX-253R

## SX-203



2X-303R2DX1 and 2X-303R1DX1 sockets  
2X-303R2DX1 and 2X-303R1DX1 sockets  
2X-303R2DX1 and 2X-303R1DX1 sockets



2X-303R2DX1 and 2X-303R1DX1 sockets  
2X-303R2DX1 and 2X-303R1DX1 sockets  
2X-303R2DX1 and 2X-303R1DX1 sockets

Y25A SMART

POWER DISTRIBUTION

2X-303R2DX1 and 2X-303R1DX1 sockets



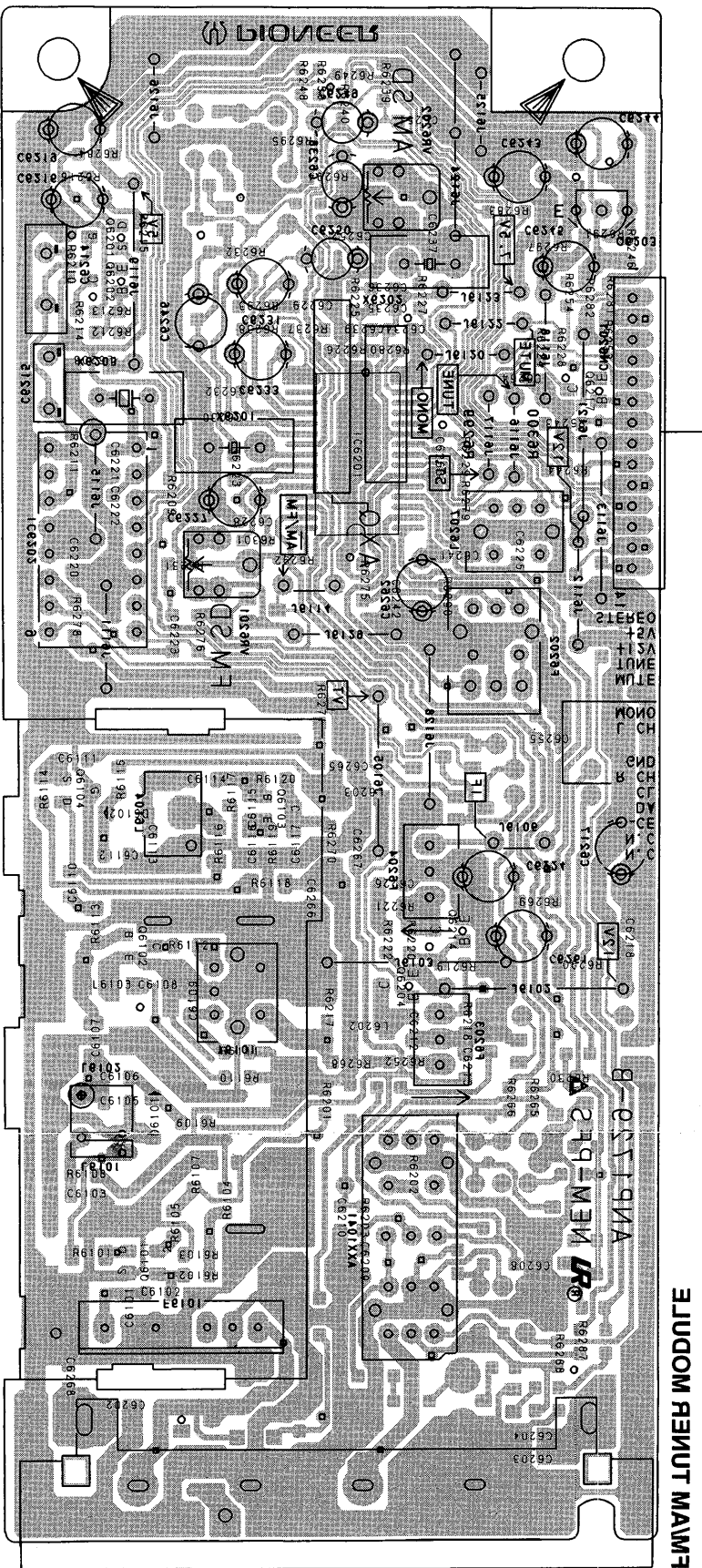






This diagram is viewed from the foil side.

00310 Yeza TA OT



ЭЛУДОМ РЕВУТ МАММ

МА  
АМЕТНА  
ЛАМИРЕТ

М<sup>А</sup>  
АМЕТНА  
ЛАМИРЕТ

- SOS8RV
- FOS8RV
- Q6103
- Q6214
- Q6204
- Q6101
- Q6201
- Q6202
- Q6217
- IC6201
- SOS801
- Q6104
- Q6102



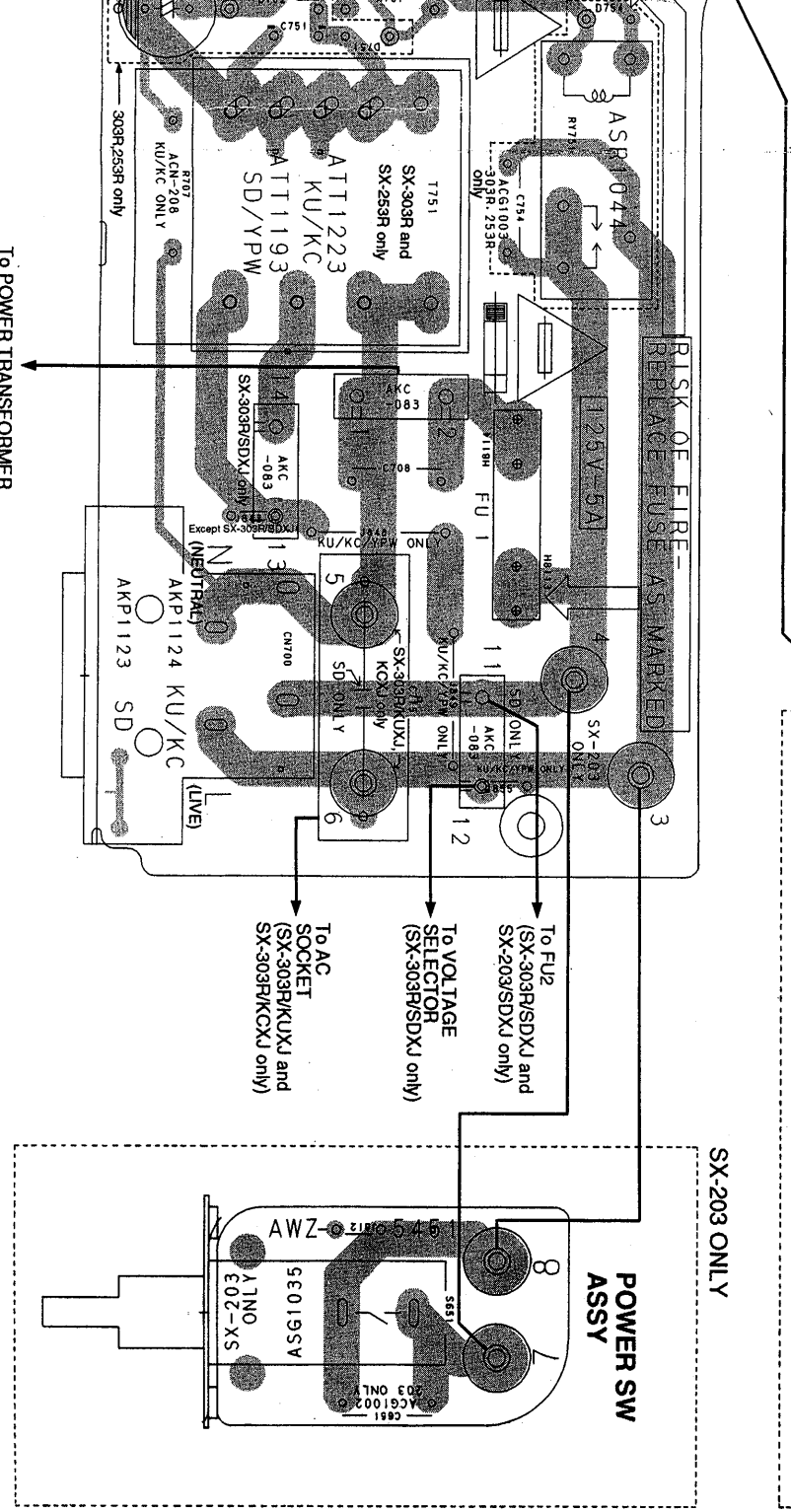
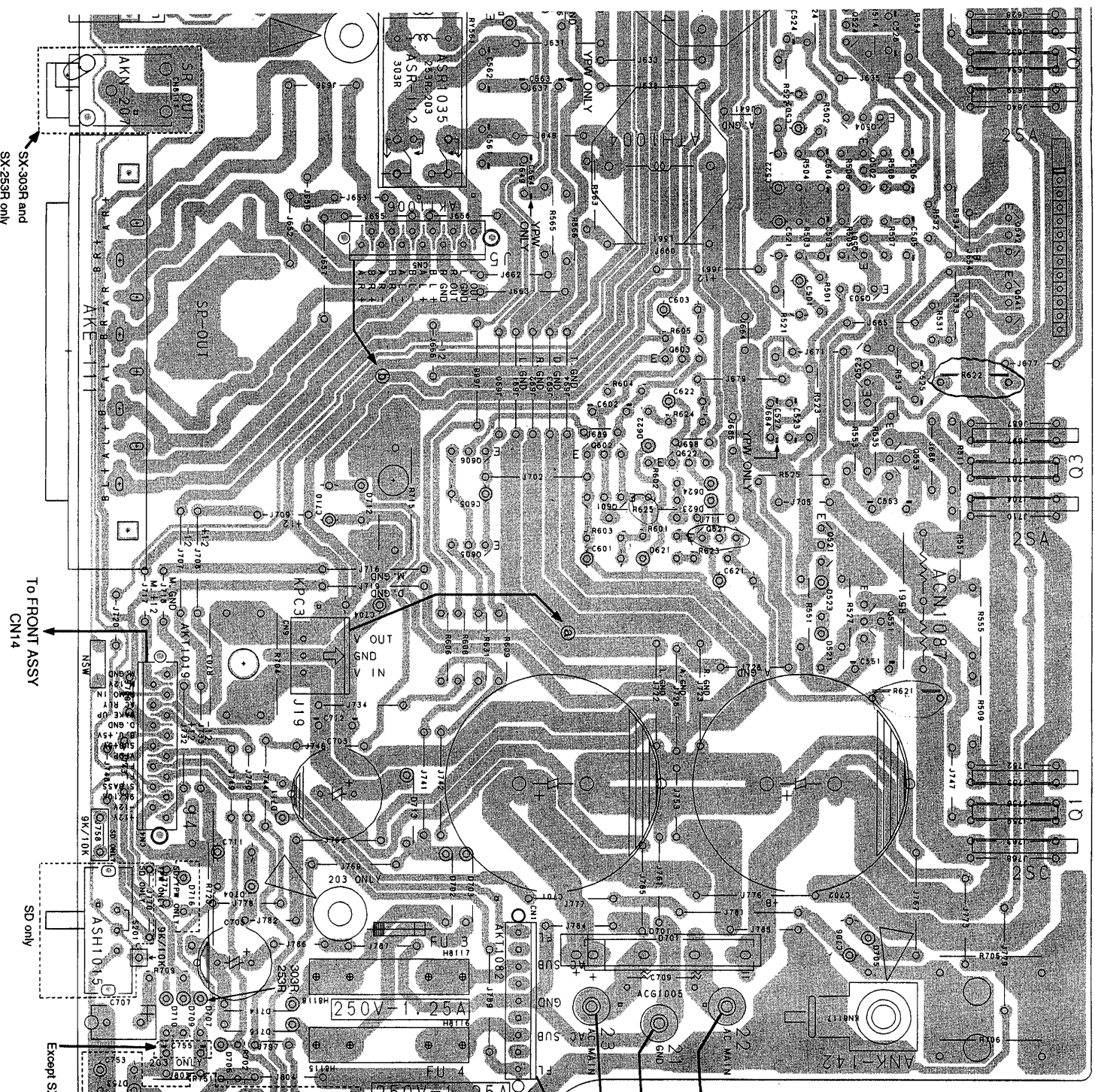
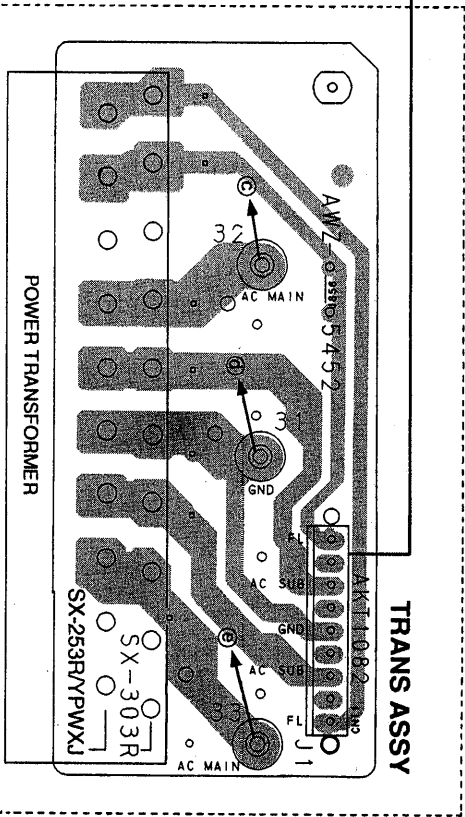
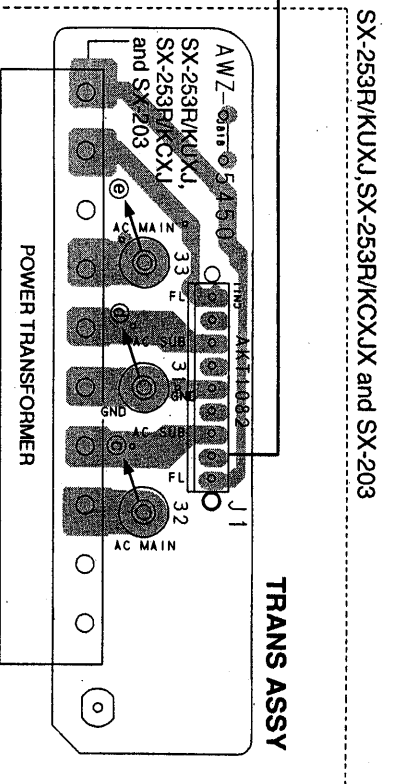
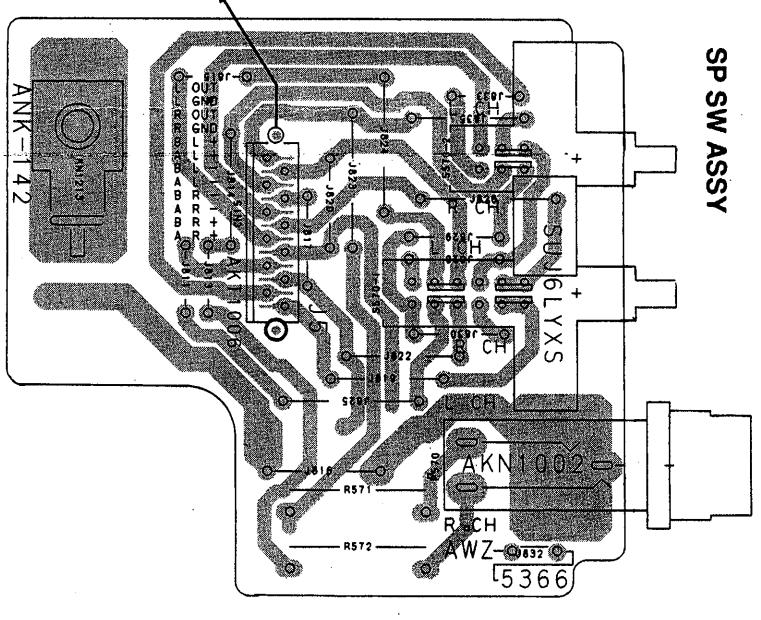
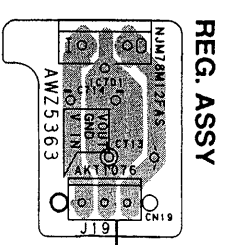




Note:

- The parts specified as 'SX-303R' or '303R' are required for the SX-303R/KUXJ/KCXJ and SDXJ.
- The parts specified as 'SX-253R' or '253R' are required for the SX-253R/KUXJ/KCXJ and YPWXJ.
- The parts specified as 'SX-203' or '203' are required for the SX-203/KUXJ and SDXJ.
- The parts specified as 'KC' are required for the SX-303R/KUXJ, SX-253R/KUXJ and SX-203R/KUXJ.
- The parts specified as 'SD' are required for the SX-303R/SDXJ, SX-253R/SDXJ.
- The parts specified as 'YPW' are required for the SX-303R/YPWJ and SX-253R/SDXJ.

Q4	Q504	Q502	Q542	Q541	Q523	Q553	Q521	Q551
	Q501	Q503	Q603	Q622	Q602	Q621	Q601	Q605
								Q751



SX-253R/KUXJ, SX-253R/KCXJ and SX-203

SX-303R and SX-253R/YPWXJ

SX-203 ONLY

SX-303R and SX-253R only

To FRONT ASSY CN14

Except SX-203

To POWER TRANSFORMER

RISK OF FIRE - REPLACE FUSE AS MARKED

To FU2 (SX-303R/SDXJ and SX-203/SDXJ only)

To VOLTAGE SELECTOR (SX-303R/SDXJ only)

To AC SOCKET (SX-303R/KUXJ and SX-303R/KCXJ only)

D

C

B

A

VR301 Q301 Q302 VR300

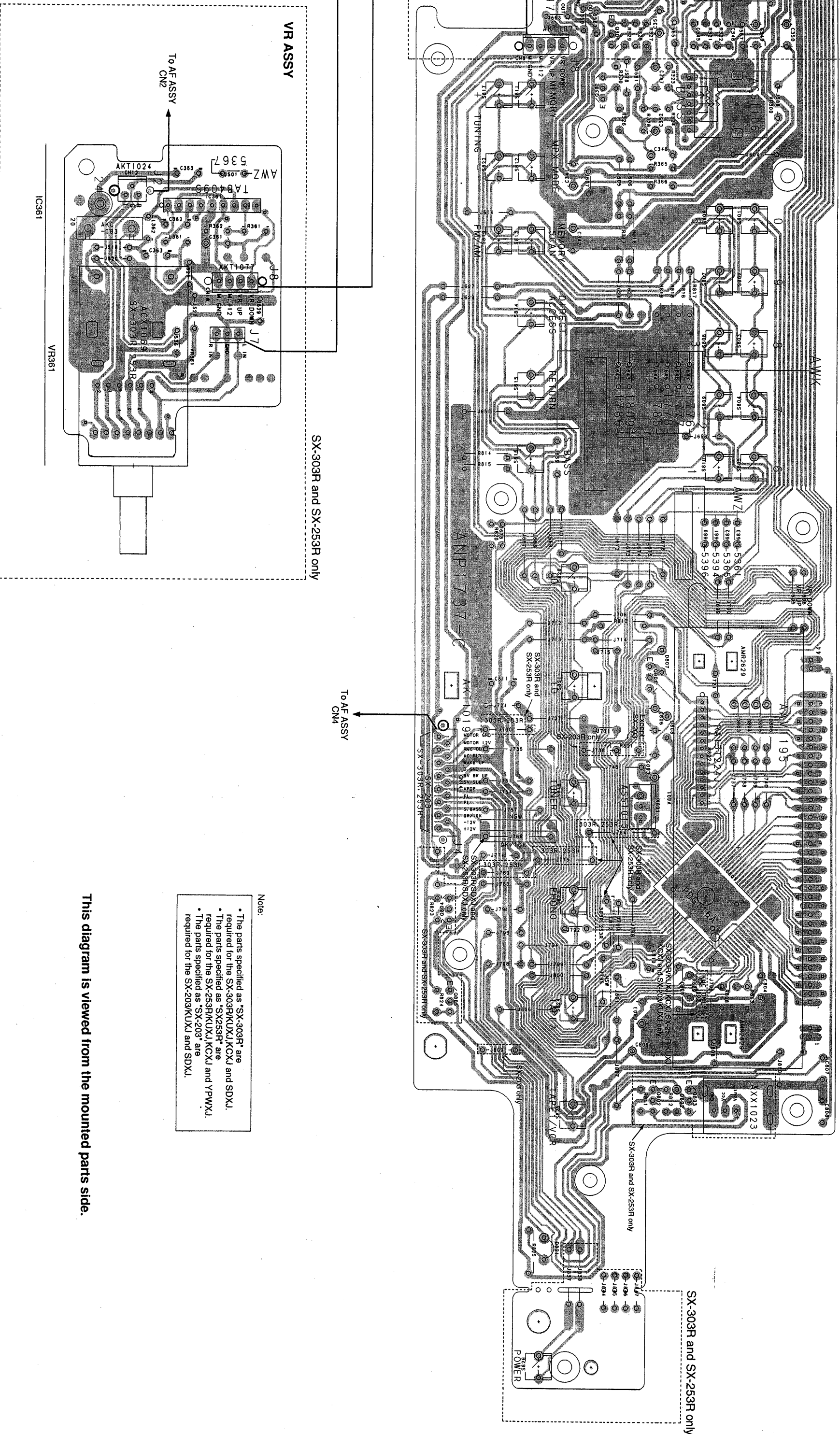
Q801

IC801 Q804

Q805

Q803 Q802

SX-303R and SX-253R only



SX-303R and SX-253R only

To AF ASSY  
CN4

To AF ASSY  
CN2

VR ASSY

SX-303R and SX-253R only

Note:

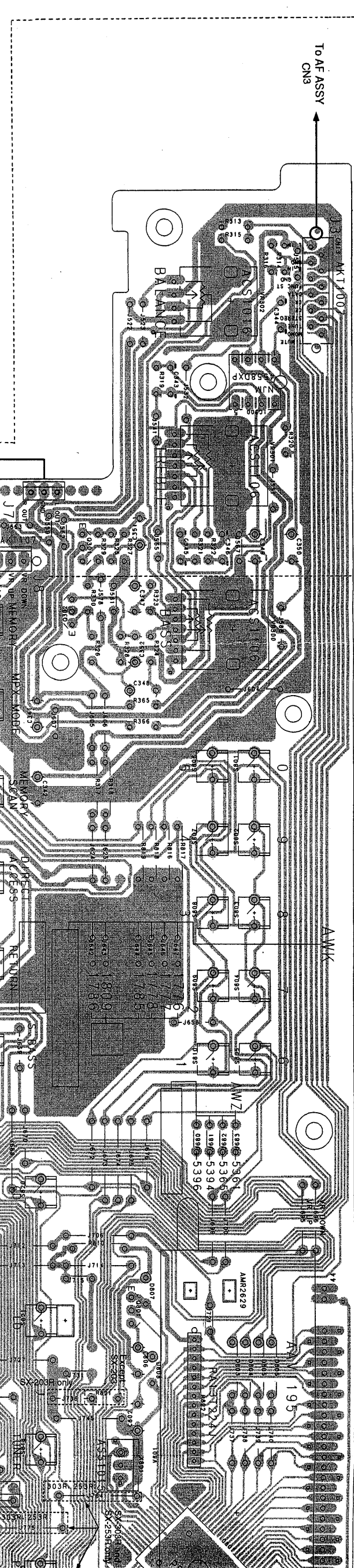
- The parts specified as "SX-303R" are required for the SX-303R/KUXJ, KCXJ and SDXJ.
- The parts specified as "SX-253R" are required for the SX-253R/KUXJ, KCXJ and YPMXJ.
- The parts specified as "SX-203" are required for the SX-203/KUXJ and SDXJ.

This diagram is viewed from the mounted parts side.



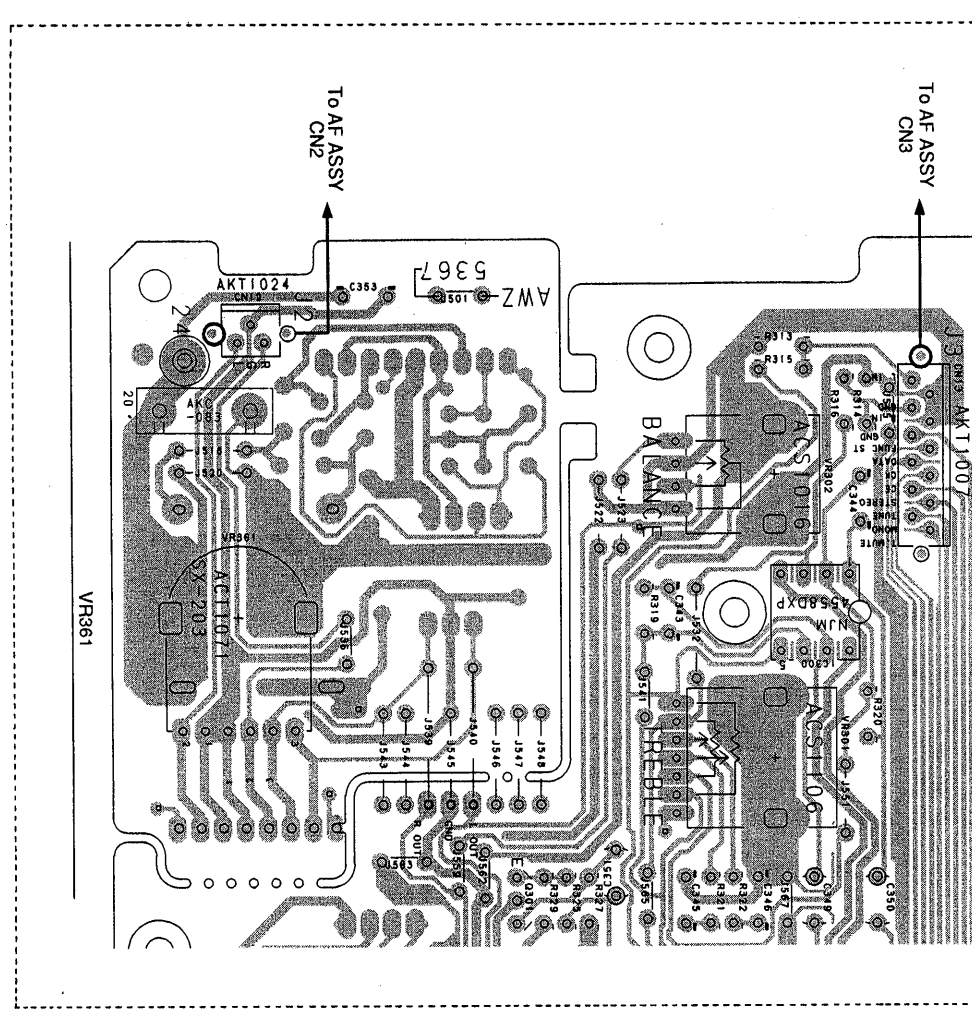
FRONT ASSY

For SX-303R and SX-253R



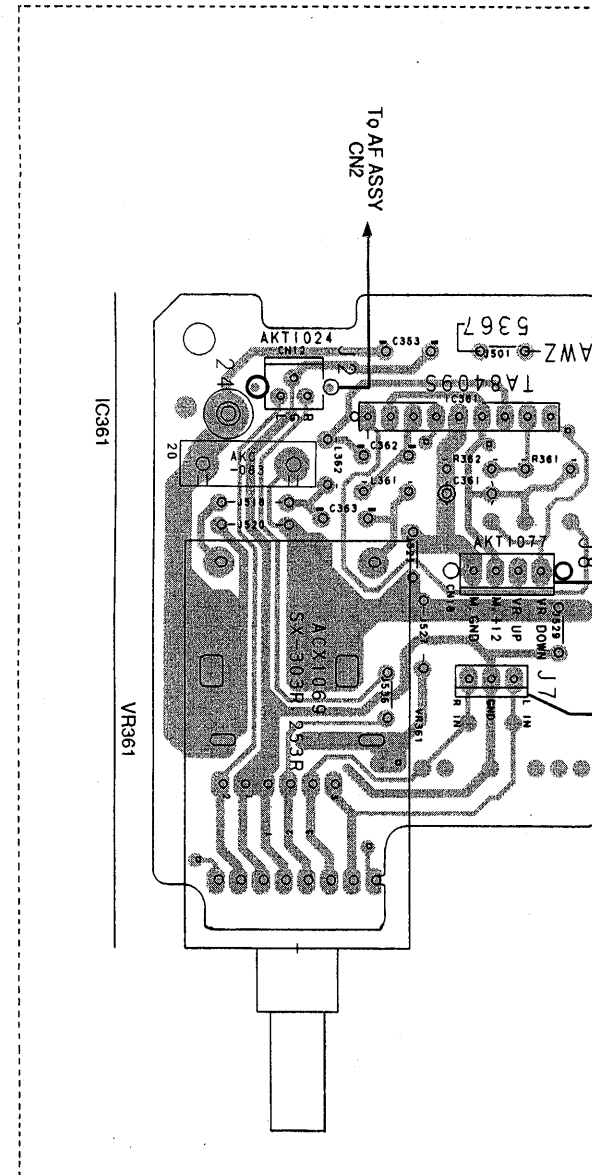
For SX-203

FRONT ASSY



SX-303R and SX-253R only

VR ASSY



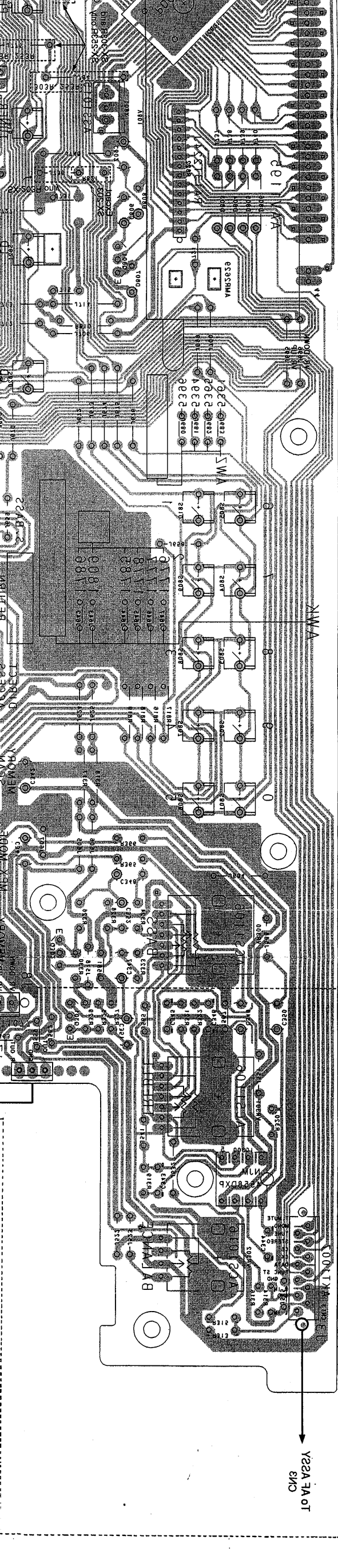
IC300 VR302 VR301 Q301 Q302 VR300 IC301 IC361 Q801 IC801





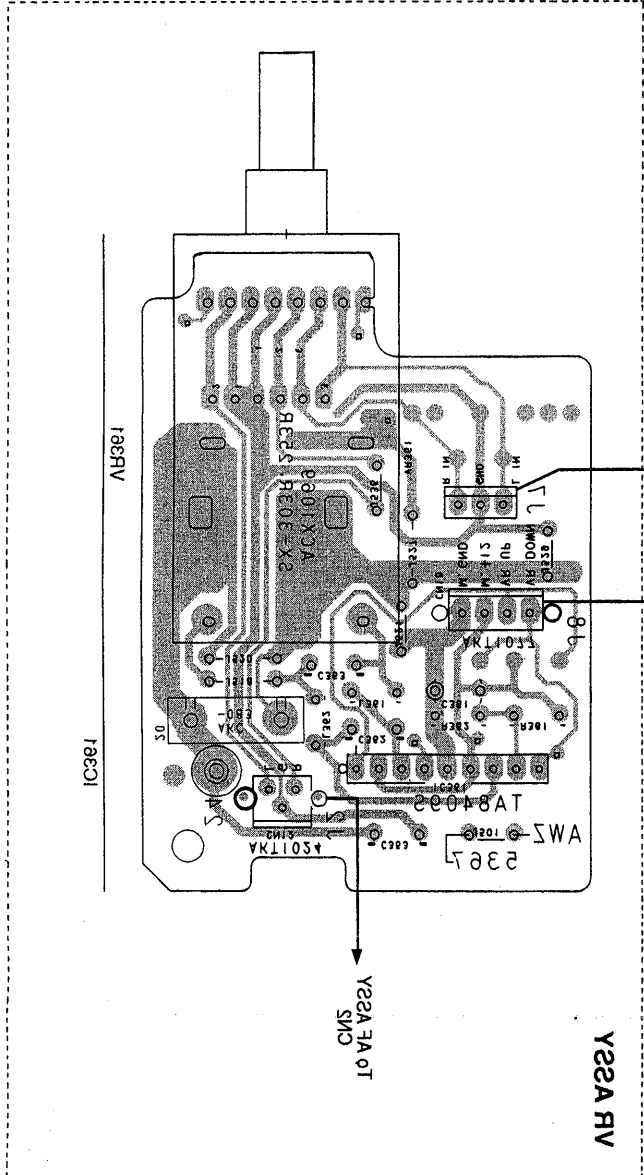
FRONT Y22A

FRONT Y22A bus RE03-X2 for CMS



Y22A FRONT CMS

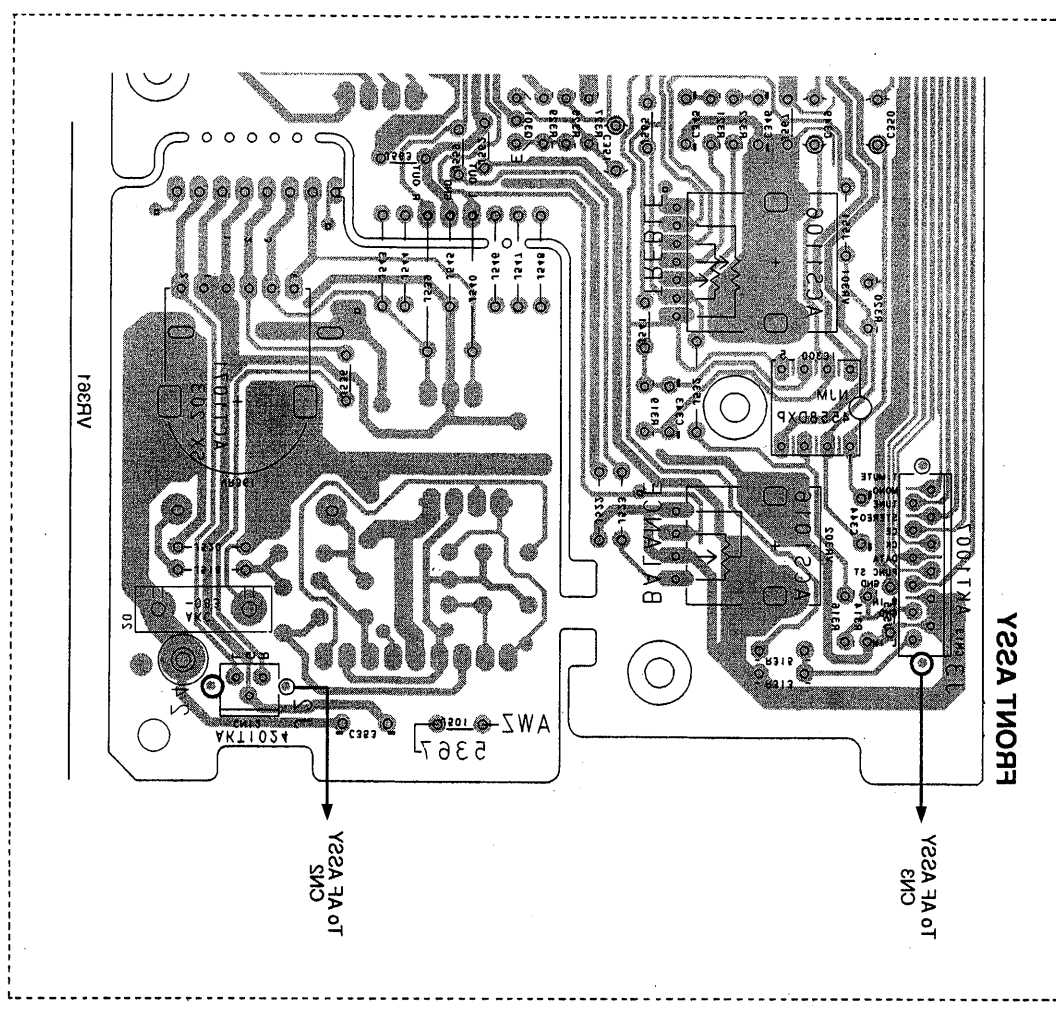
Y22A bus RE03-X2 bus RE03-X2



Y22A RV

CMS TO RE Y22A

FRONT Y22A for CMS



Y22A FRONT CMS

FRONT Y22A



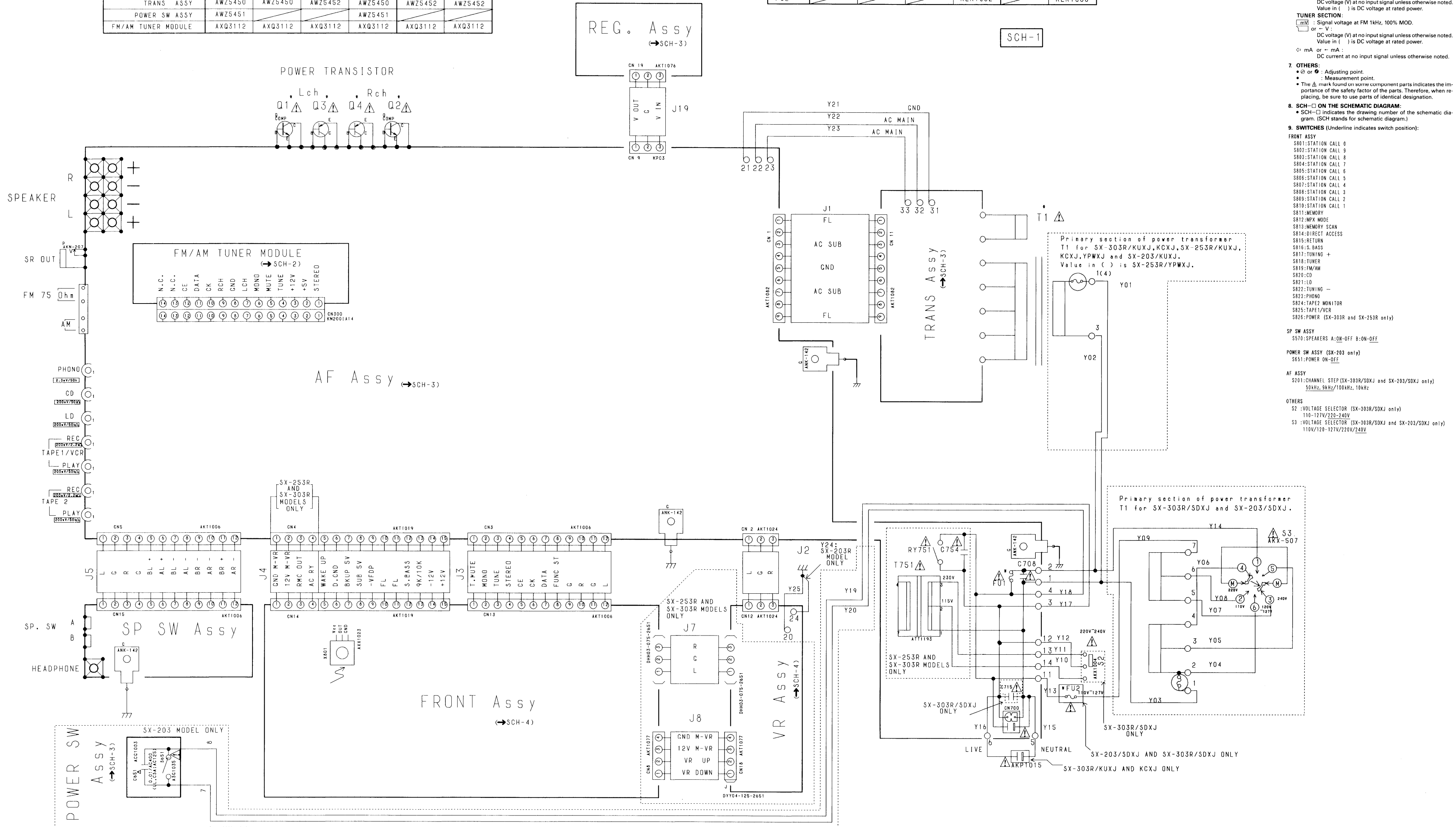
### 5. SCHEMATIC AND PCB CONNECTION DIAGRAMS

#### 5.1 OVERALL WIRING DIAGRAM

MODELS	SX-203 /KUXJ	SX-253R /KUXJ	SX-303R /KUXJ	SX-203 /SDXJ	SX-253R /YPMXJ	SX-303R /SDXJ
ASSEMBLIES						
AF ASSY	AWZ5360	AWZ5364	AWZ5368	AWZ5393	AWZ5449	AWZ5395
FRONT ASSY	AWZ5361	AWZ5365	AWZ5365	AWZ5394	AWZ5365	AWZ5396
REG. ASSY	AWZ5363	AWZ5363	AWZ5363	AWZ5363	AWZ5363	AWZ5363
SP SW ASSY	AWZ5366	AWZ5366	AWZ5366	AWZ5366	AWZ5366	AWZ5366
VR ASSY		AWZ5367	AWZ5367		AWZ5367	AWZ5367
TRANS ASSY	AWZ5450	AWZ5450	AWZ5452	AWZ5450	AWZ5452	AWZ5452
POWER SW ASSY	AWZ5451			AWZ5451		
FM/AM TUNER MODULE	AXQ3112	AXQ3112	AXQ3112	AXQ3112	AXQ3112	AXQ3112

Note:  
 • The parts specified as "SX-303R MODEL" are required for the SX-303R/KUXJ, KCXJ and SDXJ.  
 • The parts specified as "SX-253R MODEL" are required for the SX-253R/KUXJ, KCXJ and YPMXJ.  
 • The parts specified as "SX-203 MODEL" are required for the SX-203/KUXJ and SDXJ.

MODELS	SX-203 /KUXJ	SX-253R /KUXJ	SX-303R /KUXJ	SX-203 /SDXJ	SX-253R /YPMXJ	SX-303R /SDXJ
NUMBERS						
Q1, Q2	2SC4689	2SC4689	2SC3281	2SC4689	2SC4689	2SC3281
Q3, Q4	2SA1804	2SA1804	2SA1302	2SA1804	2SA1804	2SA1302
T1	ATS1526	ATS1526	ATS1524	ATS1527	ATS1543	ATS1525
FU1	REK1067 (SA)	REK1067 (SA)	AEK1002 (8A)	REK1062 (2.5A)	AEK-510 (T1.6A)	REK1066 (4A)
FU2				REK1062		REK1066



**NOTE FOR SCHEMATIC DIAGRAMS** Type 1A

1. When ordering service parts, be sure to refer to "PARTS LIST OF EXPLODED VIEWS" or "PCB PARTS LIST".

2. Since these are basic circuits, some parts of them or the values of some components may be changed for improvement.

3. **RESISTORS:**  
 Unit: k: kΩ, M: MΩ, or Ω unless otherwise noted.  
 Rated power: 1/4W, 1/6W, 1/8W, 1/10W unless otherwise noted.  
 Tolerance: (F): ±1%, (G): ±2%, (K): ±10%, (M): ±20% or ±5% unless otherwise noted.

4. **CAPACITORS:**  
 Unit: p: pF or μF unless otherwise noted.  
 Ratings: capacitor (μF)/voltage (V) unless otherwise noted.  
 Rated voltage: 50V except for electrolytic capacitors.

5. **COILS:**  
 Unit: m: mH or μH unless otherwise noted.

6. **VOLTAGE AND CURRENT:**  
**AF AMPLIFIER SECTION:**  
 V: Signal voltage at rated output.  
 or - V: DC voltage (V) at no input signal unless otherwise noted. Value in ( ) is DC voltage at rated power.  
**TUNER SECTION:**  
 V: Signal voltage at FM 1kHz, 100% MOD.  
 or - V: DC voltage (V) at no input signal unless otherwise noted. Value in ( ) is DC voltage at rated power.  
 mA or - mA: DC current at no input signal unless otherwise noted.

7. **OTHERS:**  
 • ⊙ or ⊙: Adjusting point.  
 • ⊙: Measurement point.  
 • Δ: The Δ mark found on some component parts indicates the importance of the safety factor of the parts. Therefore, when replacing, be sure to use parts of identical designation.

8. **SCH-□ ON THE SCHEMATIC DIAGRAM:**  
 • SCH-□ indicates the drawing number of the schematic diagram. (SCH stands for schematic diagram.)

9. **SWITCHES** (Underline indicates switch position):

**FRONT ASSY**  
 S801: STATION CALL 0  
 S802: STATION CALL 9  
 S803: STATION CALL 8  
 S804: STATION CALL 7  
 S805: STATION CALL 6  
 S806: STATION CALL 5  
 S807: STATION CALL 4  
 S808: STATION CALL 3  
 S809: STATION CALL 2  
 S810: STATION CALL 1  
 S811: MEMORY  
 S812: MPX MODE  
 S813: MEMORY SCAN  
 S814: DIRECT ACCESS  
 S815: RETURN  
 S816: S. BASS  
 S817: TUNING +  
 S818: TUNER  
 S819: FM/AM  
 S820: CD  
 S821: LD  
 S822: TUNING -  
 S823: PHONO  
 S824: TAPE MONITOR  
 S825: TAPE/VCR  
 S826: POWER (SX-303R and SX-253R only)

**SP SW ASSY**  
 S570: SPEAKERS A: ON-OFF B: ON-OFF

**POWER SW ASSY (SX-203 only)**  
 S651: POWER ON-OFF

**AF ASSY**  
 S701: CHANNEL STEP (SX-303R/SDXJ and SX-203/SDXJ only)  
 50kHz, 9kHz/100kHz, 1kHz

**OTHERS**  
 S2: VOLTAGE SELECTOR (SX-303R/SDXJ only)  
 110-120V/220-240V  
 S3: VOLTAGE SELECTOR (SX-303R/SDXJ and SX-203/SDXJ only)  
 110V/120-127V/220V/240V

**SCH-1** OVERALL WIRING DIAGRAM

OVERALL WIRING DIAGRAM **SCH-1**

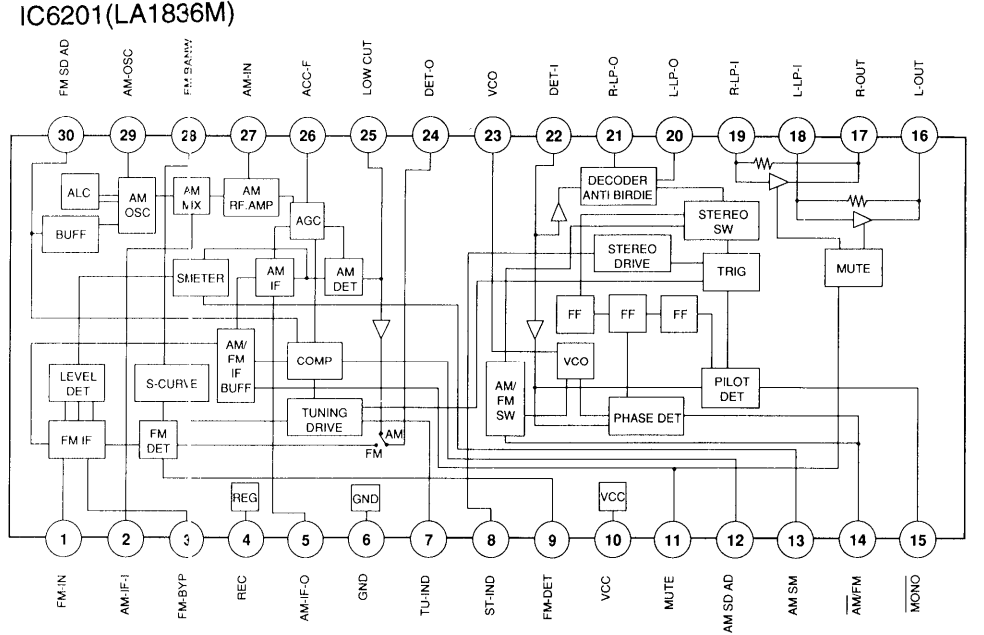
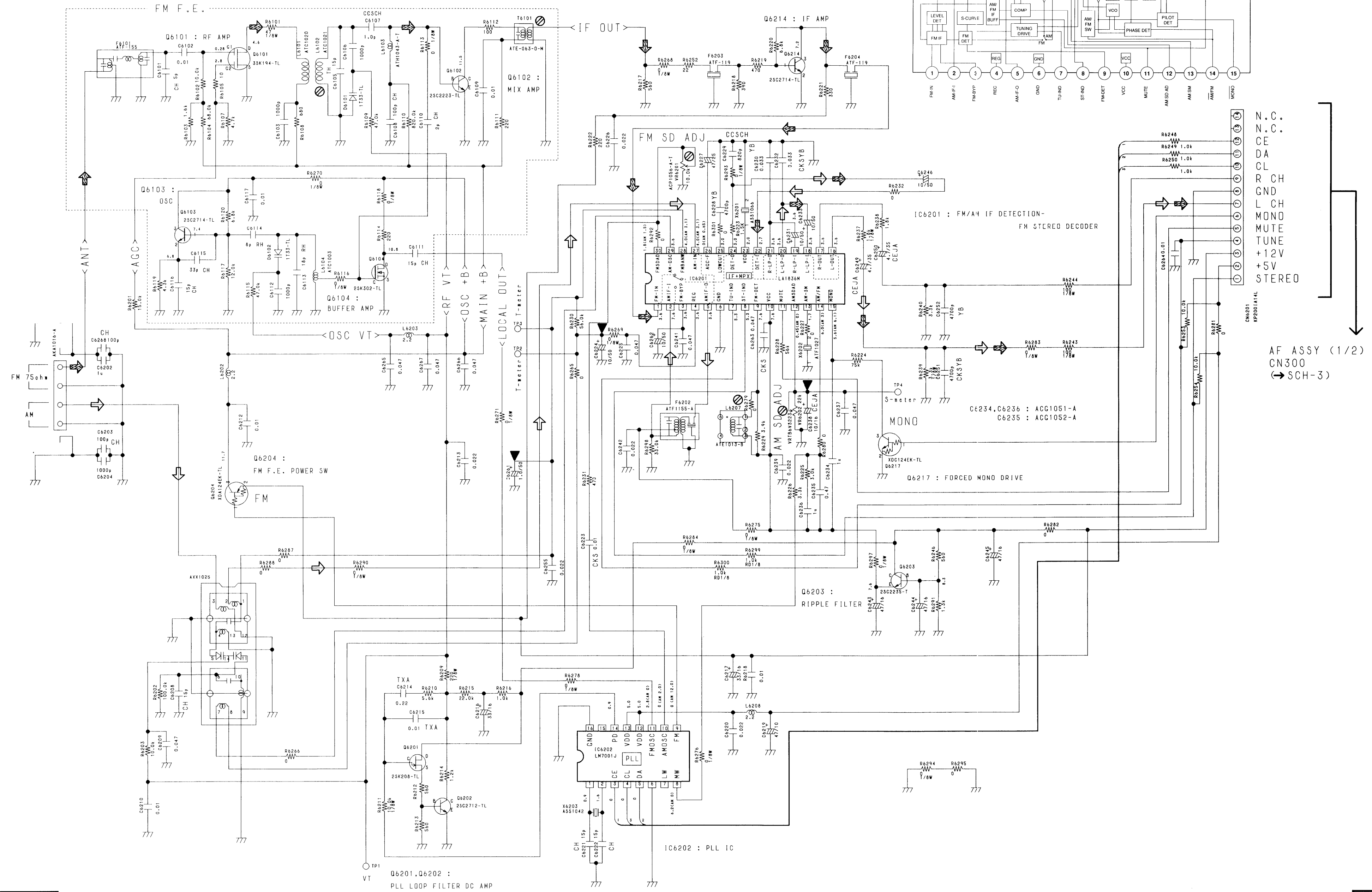


5.2 FM/AM TUNER MODULE

A  
B  
C  
D  
E  
F

FM/AM TUNER MODULE (AXQ3112)

↗: FM signal route  
↘: AM signal route



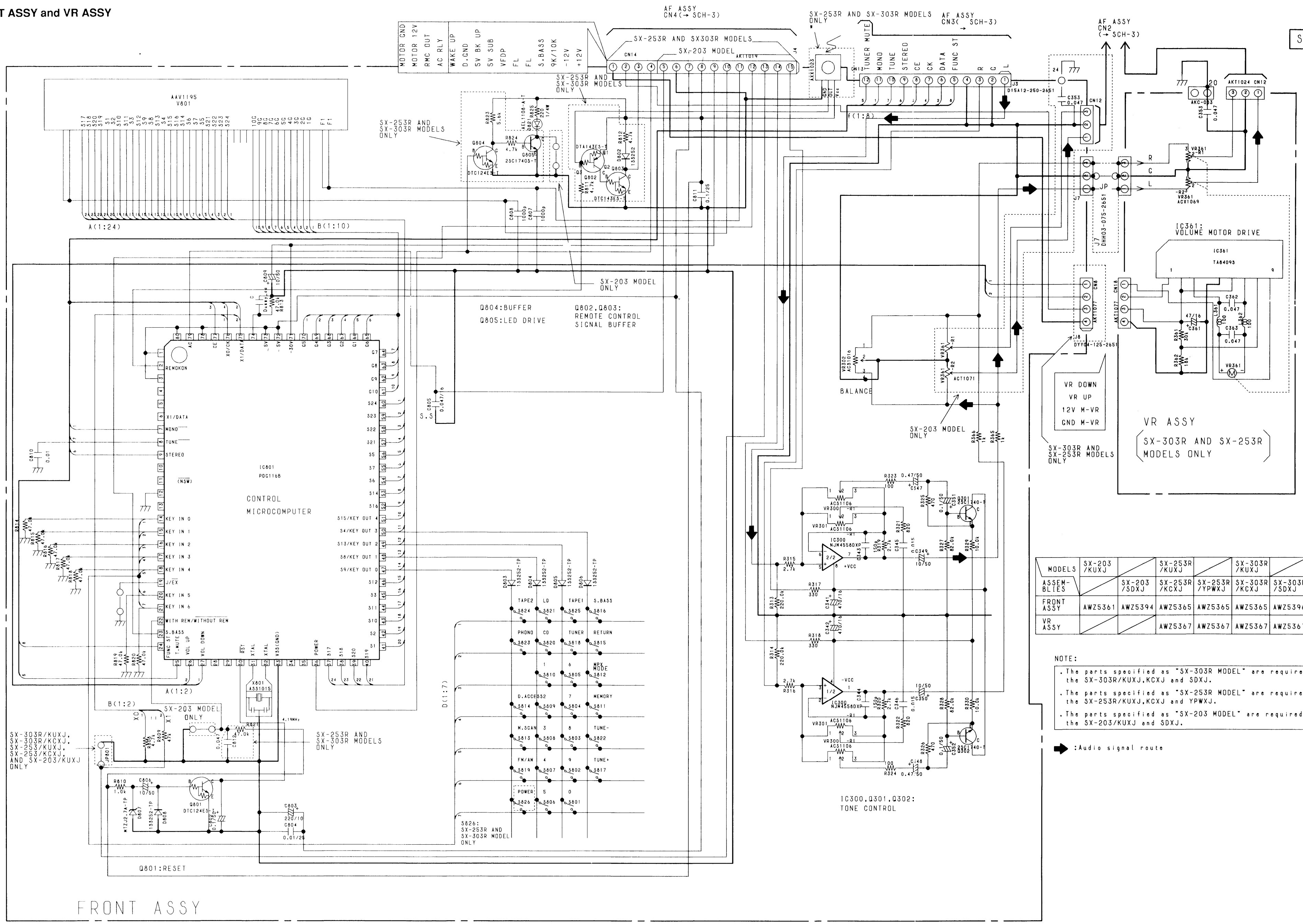
SCH-2

A  
B  
C  
D  
E  
F

SCH-2 FM/AM TUNER MODULE

FM/AM TUNER MODULE SCH-2

5.4 FRONT ASSY and VR ASSY



SCH-4

MODELS	SX-203 /KUXJ	SX-253R /KUXJ	SX-303R /KUXJ
ASSEMBLIES	SX-203 /SDXJ	SX-253R /KXCJ	SX-303R /SDXJ
FRONT ASSY	AWZ5361	AWZ5394	AWZ5365
VR ASSY		AWZ5367	AWZ5367

NOTE:  
 . The parts specified as "SX-303R MODEL" are required for the SX-303R/KUXJ, KXCJ and SDXJ.  
 . The parts specified as "SX-253R MODEL" are required for the SX-253R/KUXJ, KXCJ and YPWXJ.  
 . The parts specified as "SX-203 MODEL" are required for the SX-203/KUXJ and SDXJ.

➔ :Audio signal route

FRONT ASSY

DIODES  
 Other diodes (not noted) are 13S252

SCH-4 FRONT ASSY VR ASSY

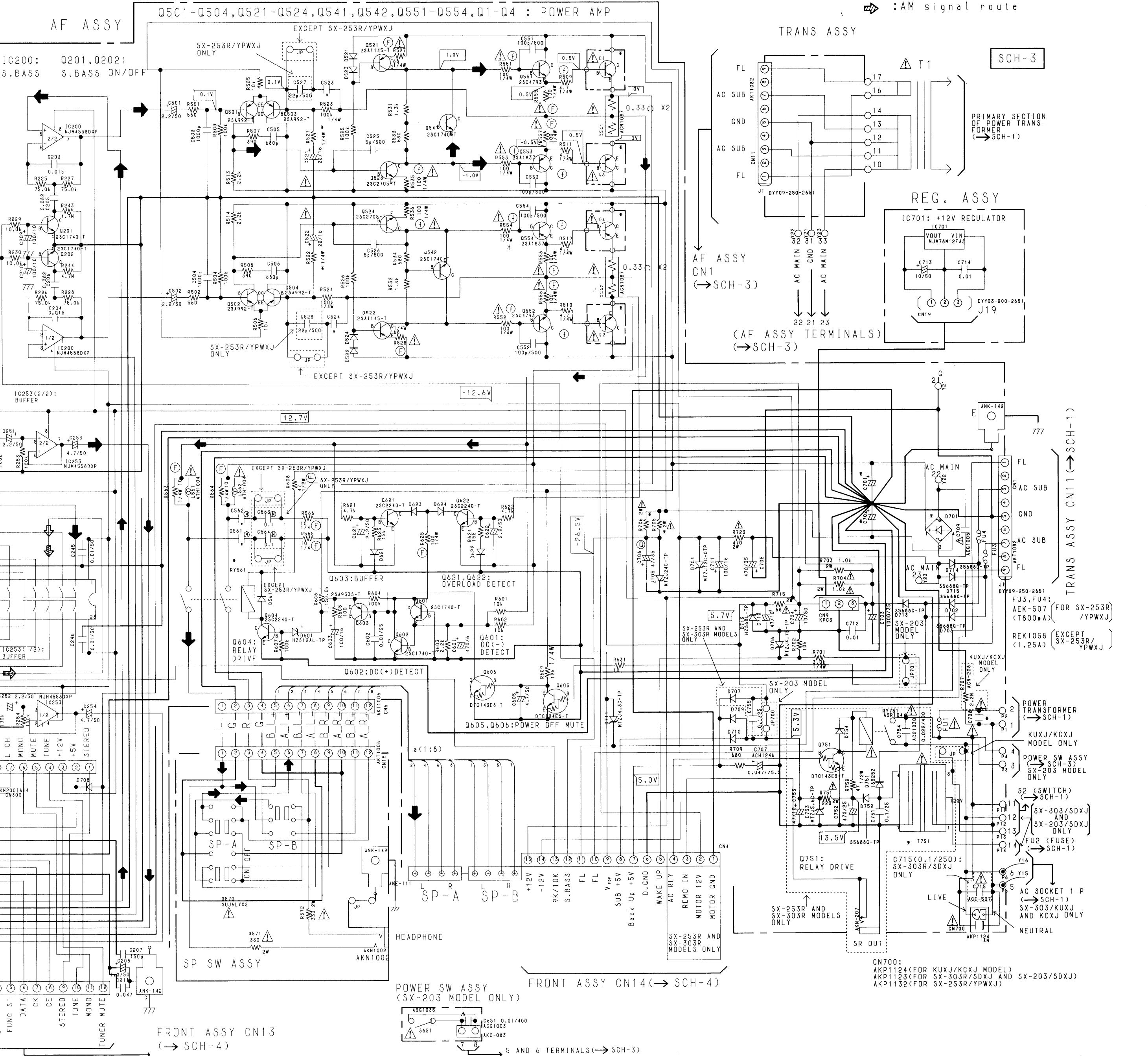
FRONT ASSY VR ASSY SCH-4

Note:  
 The parts specified as "SX-303R MODEL" are required for the SX-303R/KUXJ, KCXJ and SDXJ.  
 The parts specified as "SX-253R MODEL" are required for the SX-253R/KUXJ, KCXJ and YPWXJ.  
 The parts specified as "SX-203 MODEL" are required for the SX-203/KUXJ and SDXJ.  
 The parts specified as "SX-203 MODEL" are required for the SX-203/KUXJ, KCXJ and YPWXJ.

- ➡ : Audio signal route
- ⇄ : FM signal route
- ⬅ : AM signal route

MODELS	SX-203 /KUXJ	SX-253R /KUXJ	SX-303R /KUXJ	SX-303R /SDXJ
AF ASSY	AWZ5360	AWZ5393	AWZ5364	AWZ5449
SP SWITCH ASSY	AWZ5366	AWZ5366	AWZ5366	AWZ5366
TRANS ASSY	AWZ5450	AWZ5450	AWZ5452	AWZ5452
REC. ASSY	AWZ5363	AWZ5363	AWZ5363	AWZ5363
POWER SW ASSY	AWZ5451	AWZ5451		

MODELS	SX-203 /KUXJ	SX-253R /KUXJ	SX-253R /KUXJ	SX-253R /YPWXJ	SX-303R /KUXJ	SX-303R /SDXJ
NUMBERS						
523,524	12P	12P	12P	27P	12P	12P
561,562	0.047	0.047	0.047	0.1	0.047	0.047
701,702	ACH1044 (8200/63)	ACH1044 (8200/63)	ACH1044 (8200/63)	ACH1044 (8200/71)	ACH1204 (8200/71)	ACH1204 (8200/71)
708	ACC1003 (0.01/400)	ACC1030 (0.022/400)	ACC1003 (0.01/400)	ACC1003 (0.01/400)	ACC1030 (0.022/400)	ACC1030 (0.022/400)
D 701	D35BA20	D35BA20	D35BA20	D35BA20	D55B20F	D55B20F
521,522	910	910	910	910	750	750
R 705	3.3K/2W	5.3K/2W	5.3K/2W	3.3K/2W	4.7K/2W	4.7K/2W
706	2.7K/2W	2.7K/2W	2.7K/2W	2.7K/2W	4.7K/2W	4.7K/2W
715	68/2W	68/2W	68/2W	68/3W	68/2W	68/2W
RY 561	ASR1035	ASR1035	ASR1035	ASR1035	ASR-112	ASR-112
T 751	ATT1223	ATT1223	ATT1193	ATT1223	ATT1193	ATT1193



A  
B  
C  
D  
E  
F

A  
B  
C  
D  
E  
F

SCH-3 AF ASSY

AF ASSY SCH-3