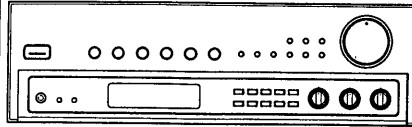


875

PIONEER
The Art of Entertainment

Service Manual



ORDER NO.
ARZ2844

STEREO RECEIVER

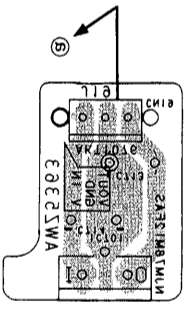
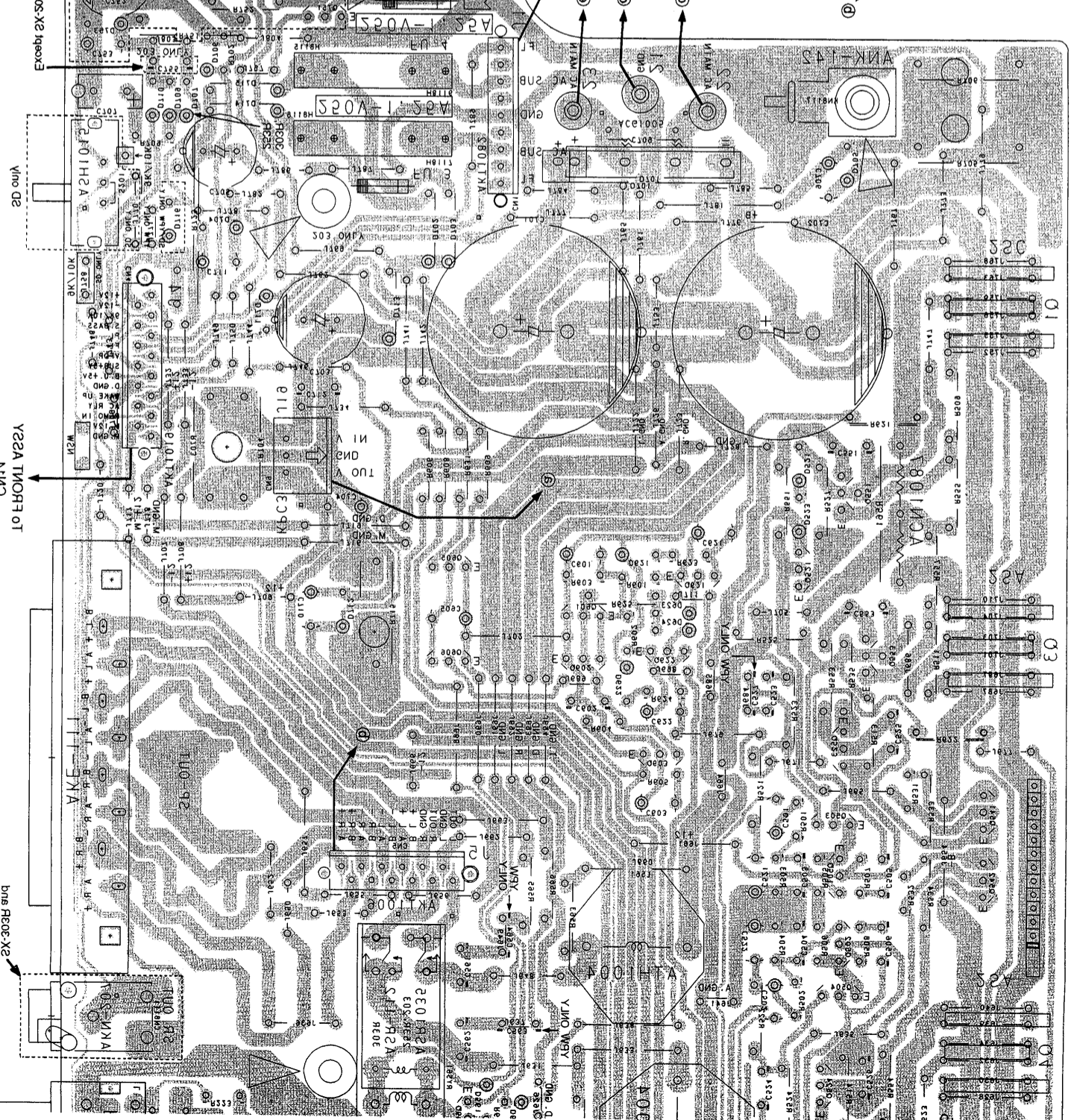
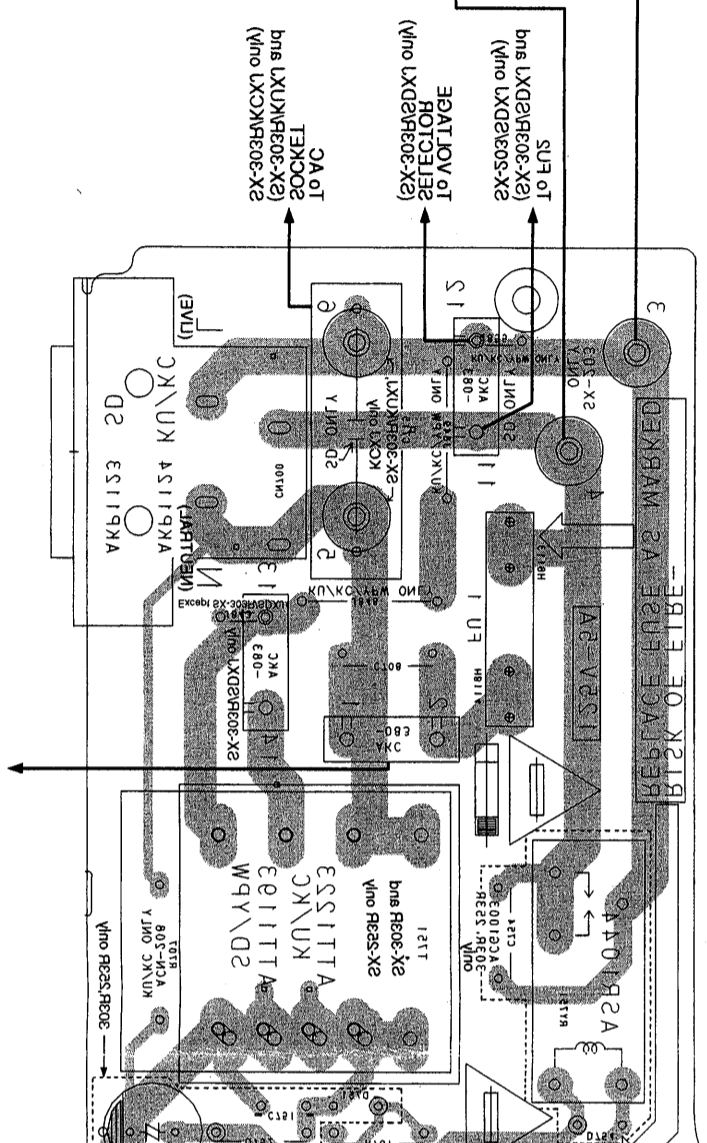
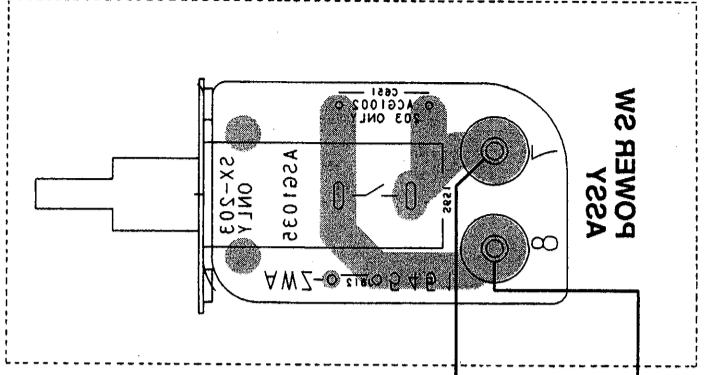
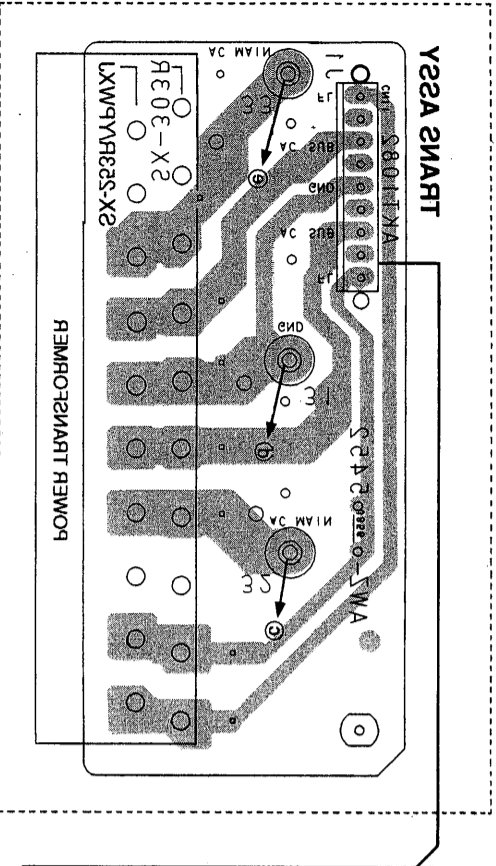
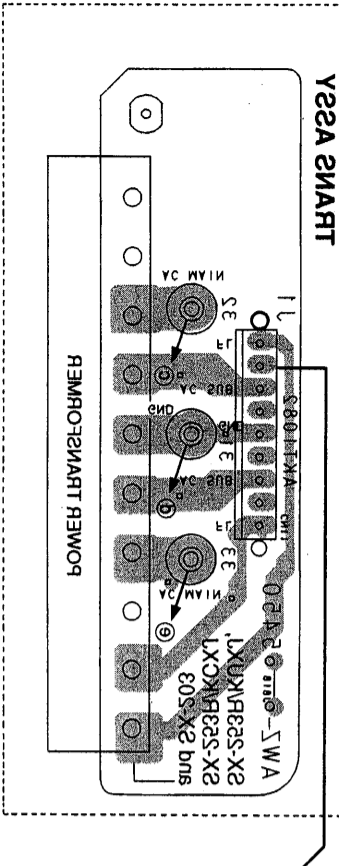
SX-303R

SX-253R

SX-203



2X-303R2DX1 and 2X-303R1DX1 sockets
2X-303R2DX1 and 2X-303R1DX1 sockets
2X-303R2DX1 and 2X-303R1DX1 sockets



Y25A SMART

POWER DISTRIBUTION

2X-303R2DX1 and 2X-303R1DX1 sockets

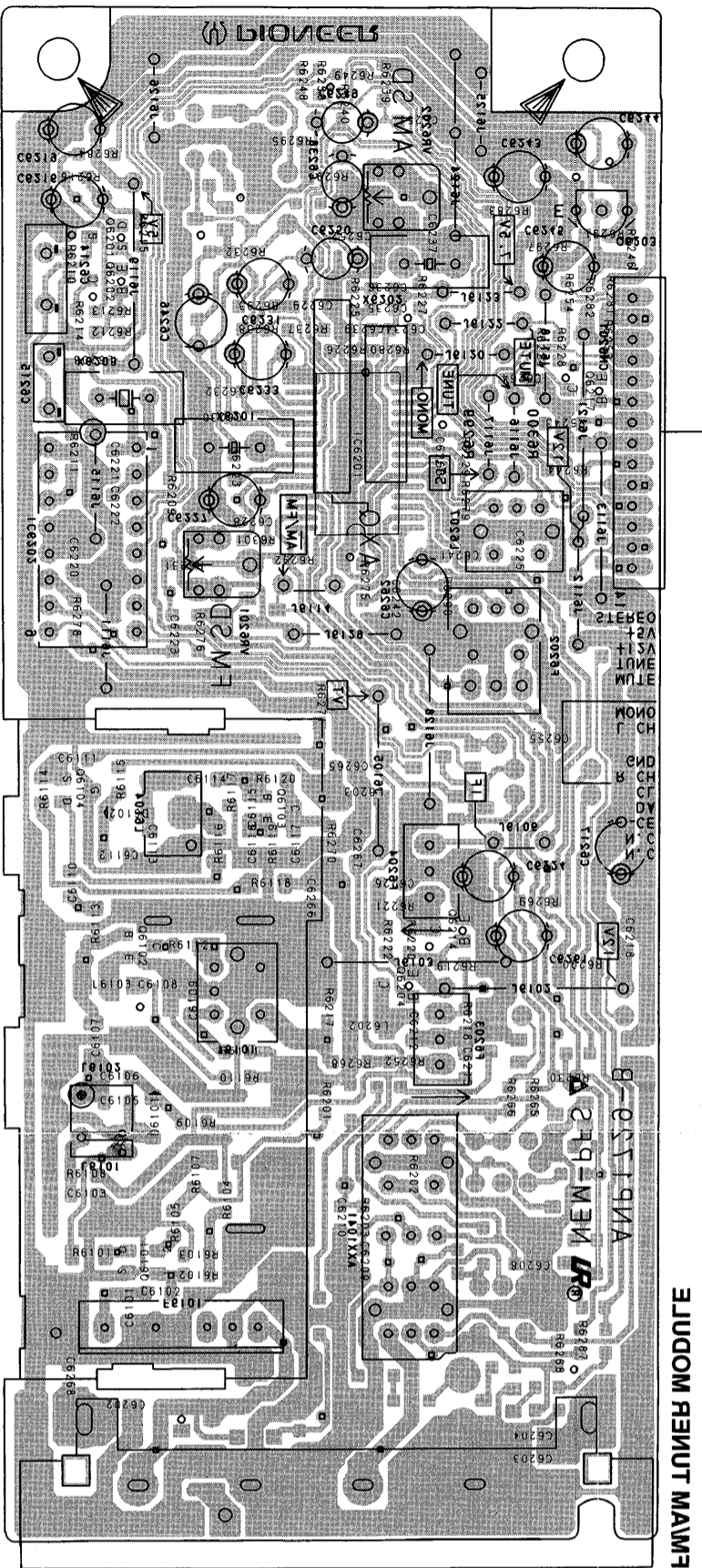
Y25A SMART

POWER DISTRIBUTION

2X-303R2DX1 and 2X-303R1DX1 sockets

This diagram is viewed from the foil side.

000310 Yeza TA OT



S0S8RV
 Q6201 Q6202 Q6217 IC6201
 S0S8O1

Q6103
 Q6104 Q6214 Q6204
 Q6102

Q6101

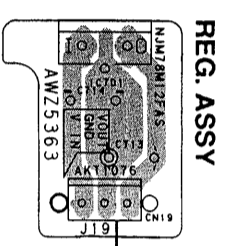
М¹
АМЕТНА
ЛАМИРАТ

М^А
АМЕТНА
ЛАМИРАТ

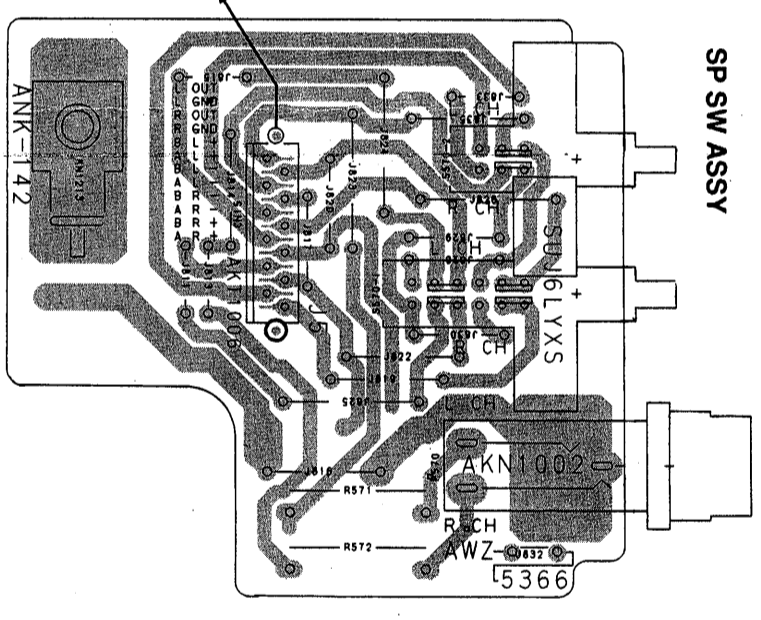
Note:

- The parts specified as 'SX-303R or 303P' are required for the SX-303R/KUXJ/KCXJ and SDXJ.
- The parts specified as 'SX-253R or 253P' are required for the SX-253R/KUXJ/KCXJ and YPWXJ.
- The parts specified as 'SX-203 or 203P' are required for the SX-203R/KUXJ and SDXJ.
- The parts specified as 'KC' are required for the SX-303R/KUXJ, SX-253R/KUXJ and SX-203R/KUXJ.
- The parts specified as 'SD' are required for the SX-303R/SDXJ, SX-253R/SDXJ.
- The parts specified as 'YPMW' are required for the SX-253R/YPMXJ.

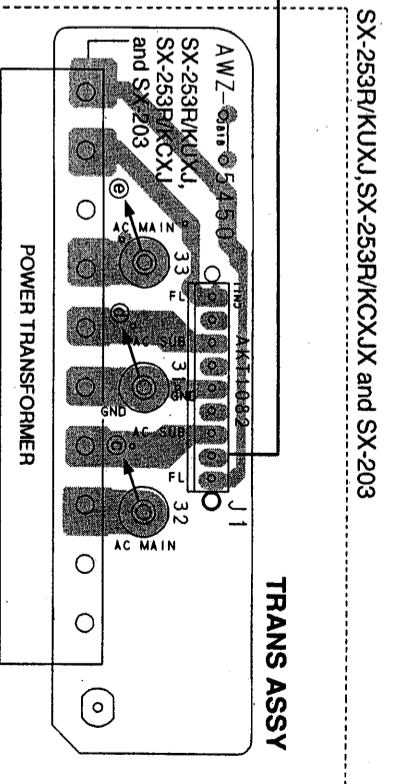
Q4	Q504	Q502	Q542	Q541	Q523	Q553	Q521	Q551
	Q501	Q503	Q603	Q602	Q621	Q601	Q603	Q605
								Q751



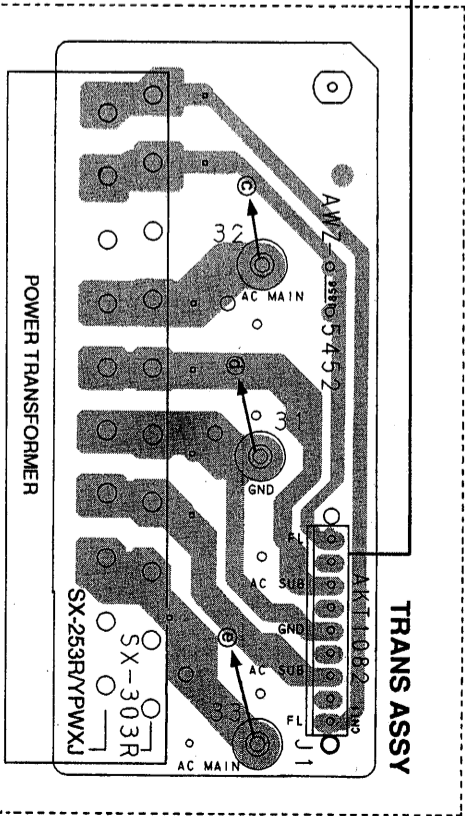
REG. ASSY



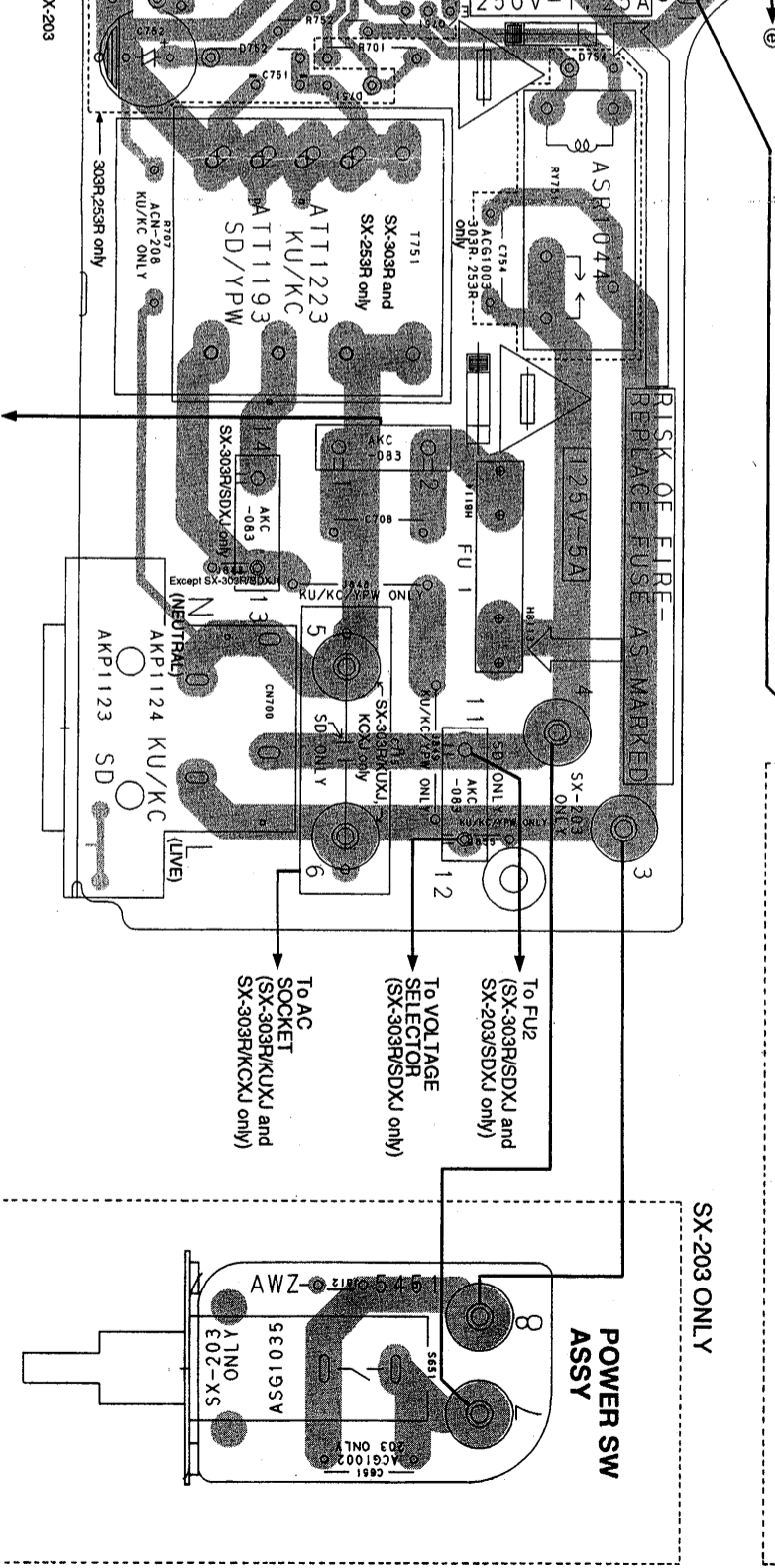
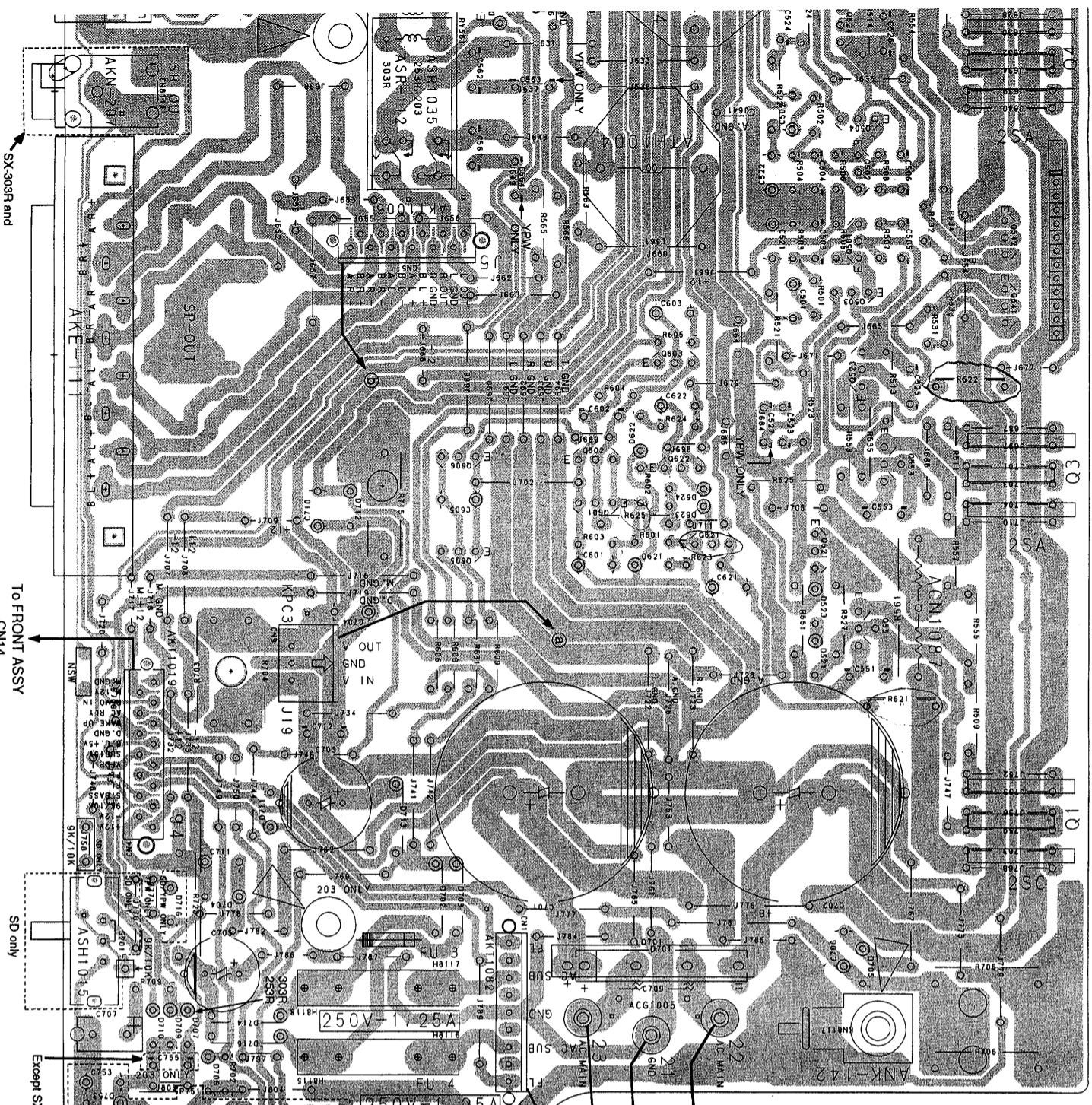
SP SW ASSY



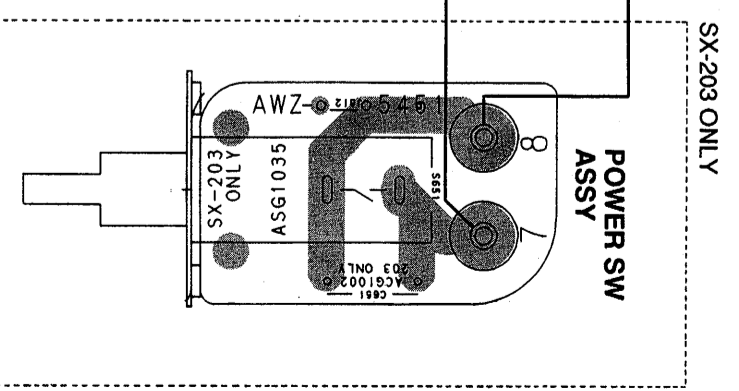
TRANS ASSY



SX-303R and SX-253R/YPWXJ



POWER SW ASSY



SX-203 ONLY

SX-303R and SX-253R only

To FRONT ASSY CN14

SD only

Except SX-203

To POWER TRANSFORMER

RISK OF FIRE - REPLACE FUSE AS MARKED

250V-1.25A

125V-5A

To VOLTAGE SELECTOR (SX-303R/SDXJ only)

To AC SOCKET (SX-303R/KUXJ and SX-303R/KCXJ only)

D

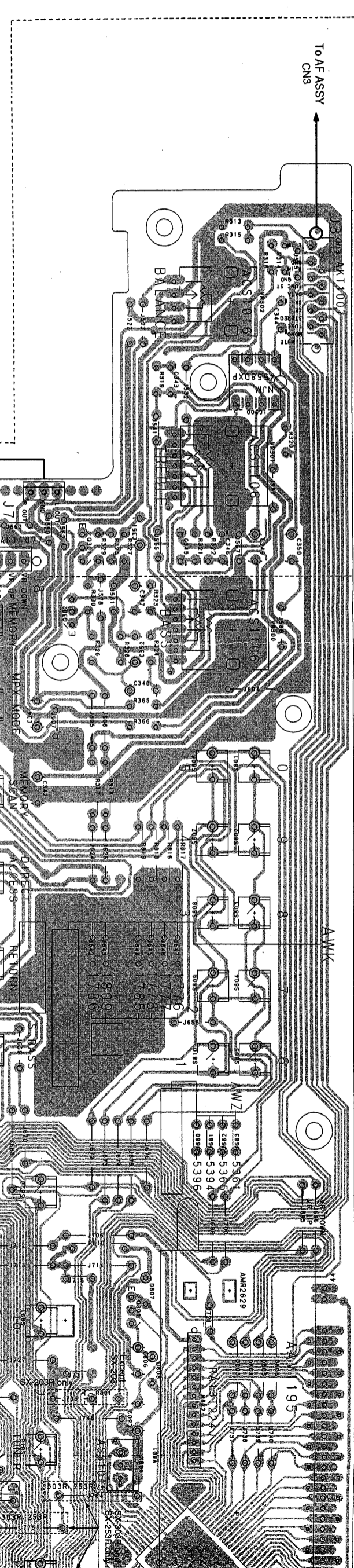
C

B

A

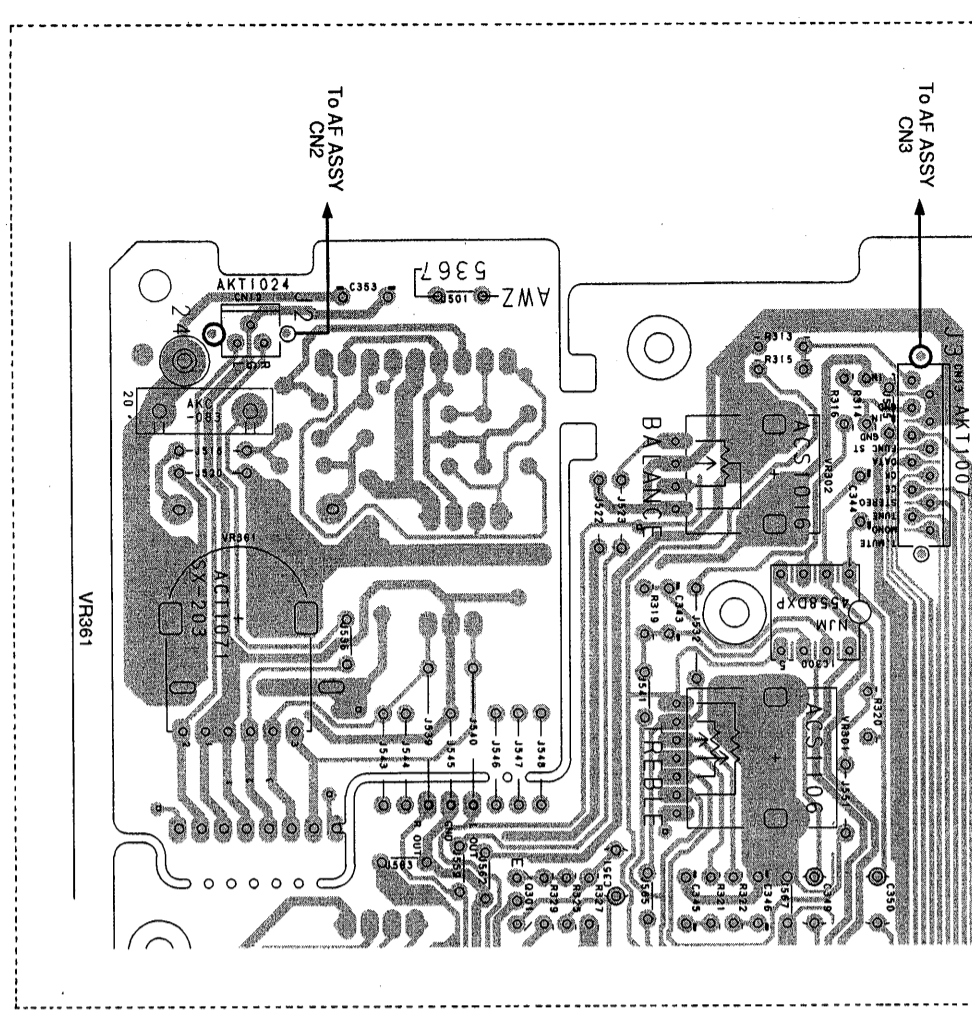
FRONT ASSY

For SX-303R and SX-253R



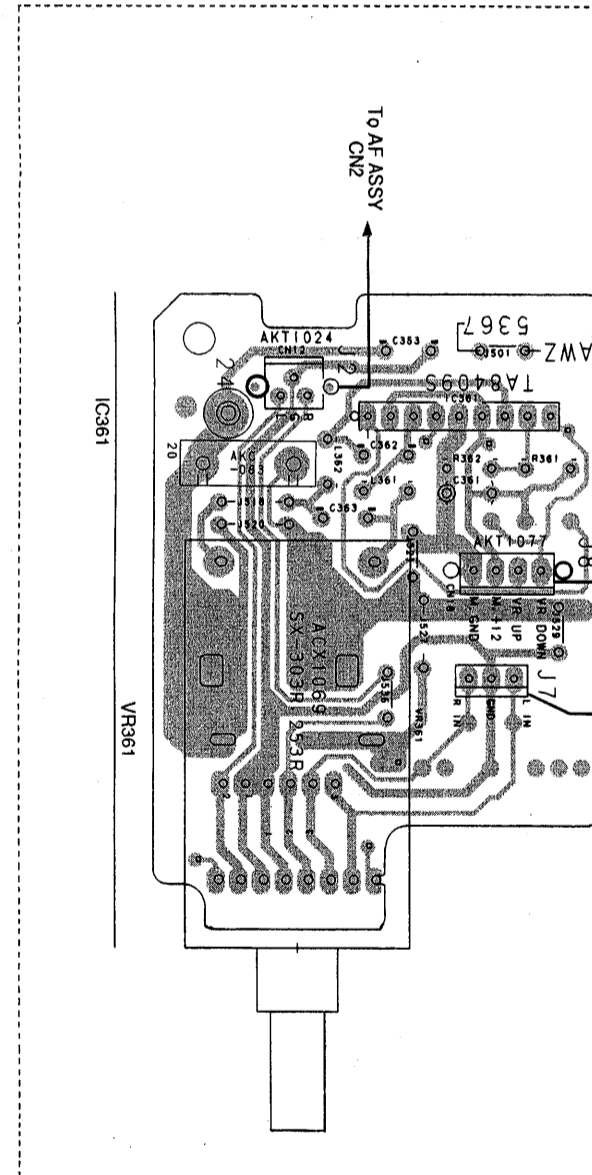
For SX-203

FRONT ASSY



SX-303R and SX-253R only

VR ASSY

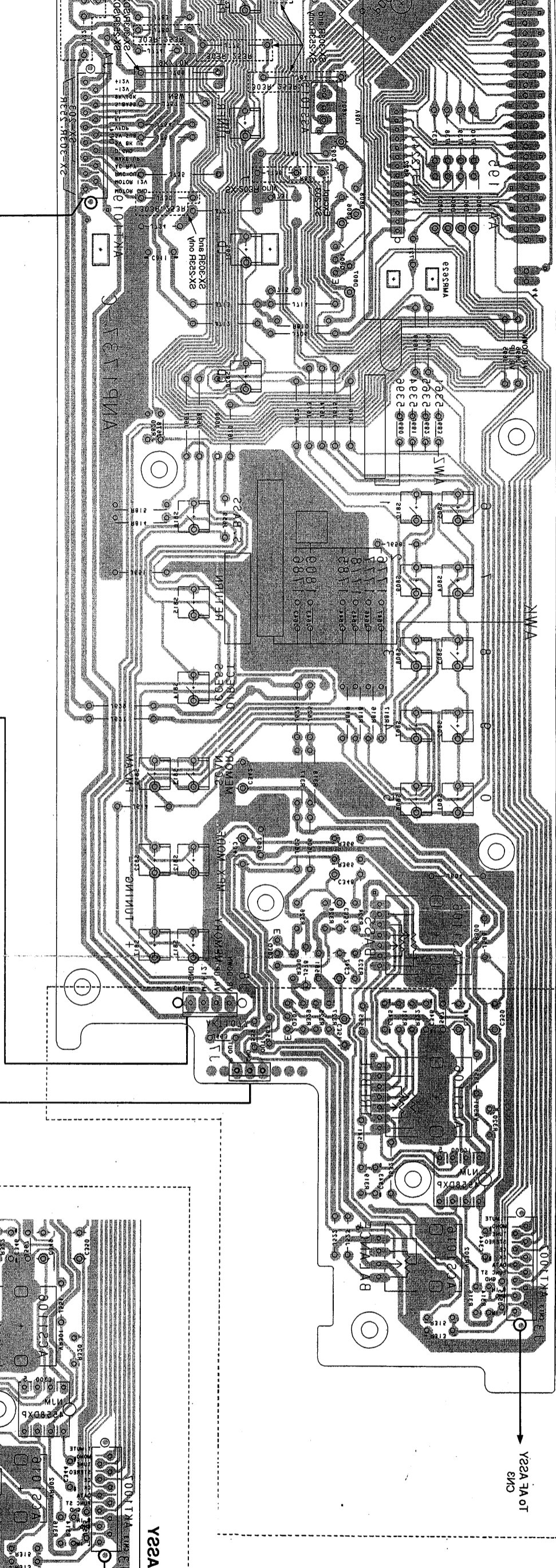


Q801

IC801

FRONT Y22A

IC800 IC801 IC802 IC803 IC804 IC805 IC806 IC807 IC808 IC809 IC810 IC811 IC812 IC813 IC814 IC815 IC816 IC817 IC818 IC819 IC820 IC821 IC822 IC823 IC824 IC825 IC826 IC827 IC828 IC829 IC830 IC831 IC832 IC833 IC834 IC835 IC836 IC837 IC838 IC839 IC840 IC841 IC842 IC843 IC844 IC845 IC846 IC847 IC848 IC849 IC850 IC851 IC852 IC853 IC854 IC855 IC856 IC857 IC858 IC859 IC860 IC861 IC862 IC863 IC864 IC865 IC866 IC867 IC868 IC869 IC870 IC871 IC872 IC873 IC874 IC875 IC876 IC877 IC878 IC879 IC880 IC881 IC882 IC883 IC884 IC885 IC886 IC887 IC888 IC889 IC890 IC891 IC892 IC893 IC894 IC895 IC896 IC897 IC898 IC899 IC900

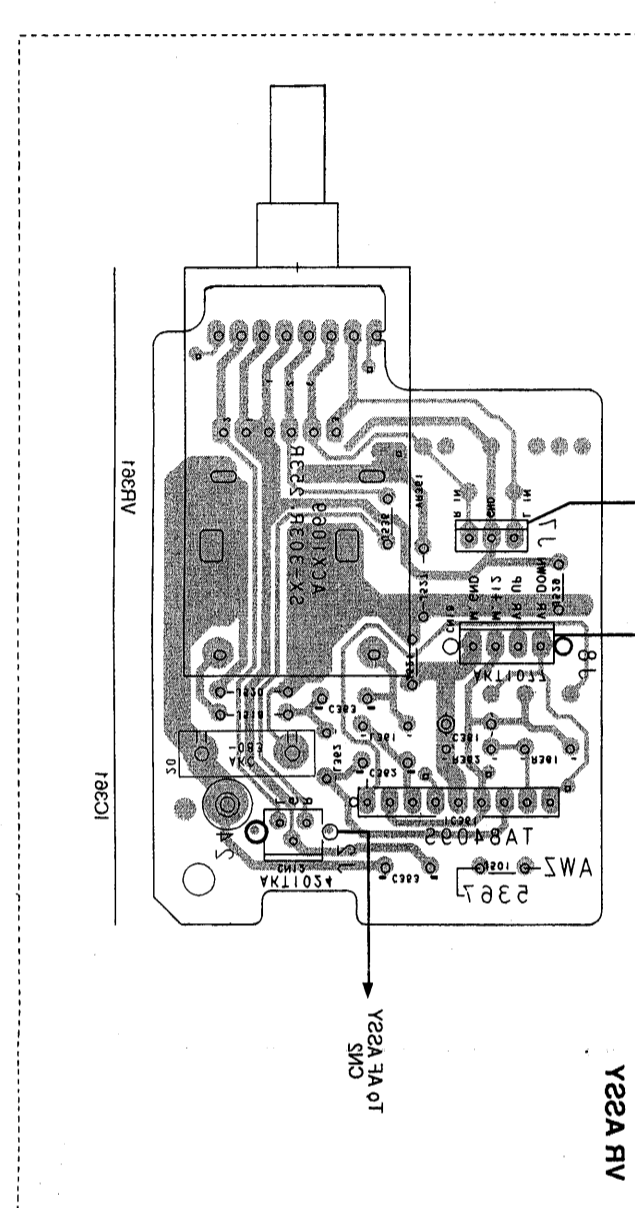


Y22A TO CMS

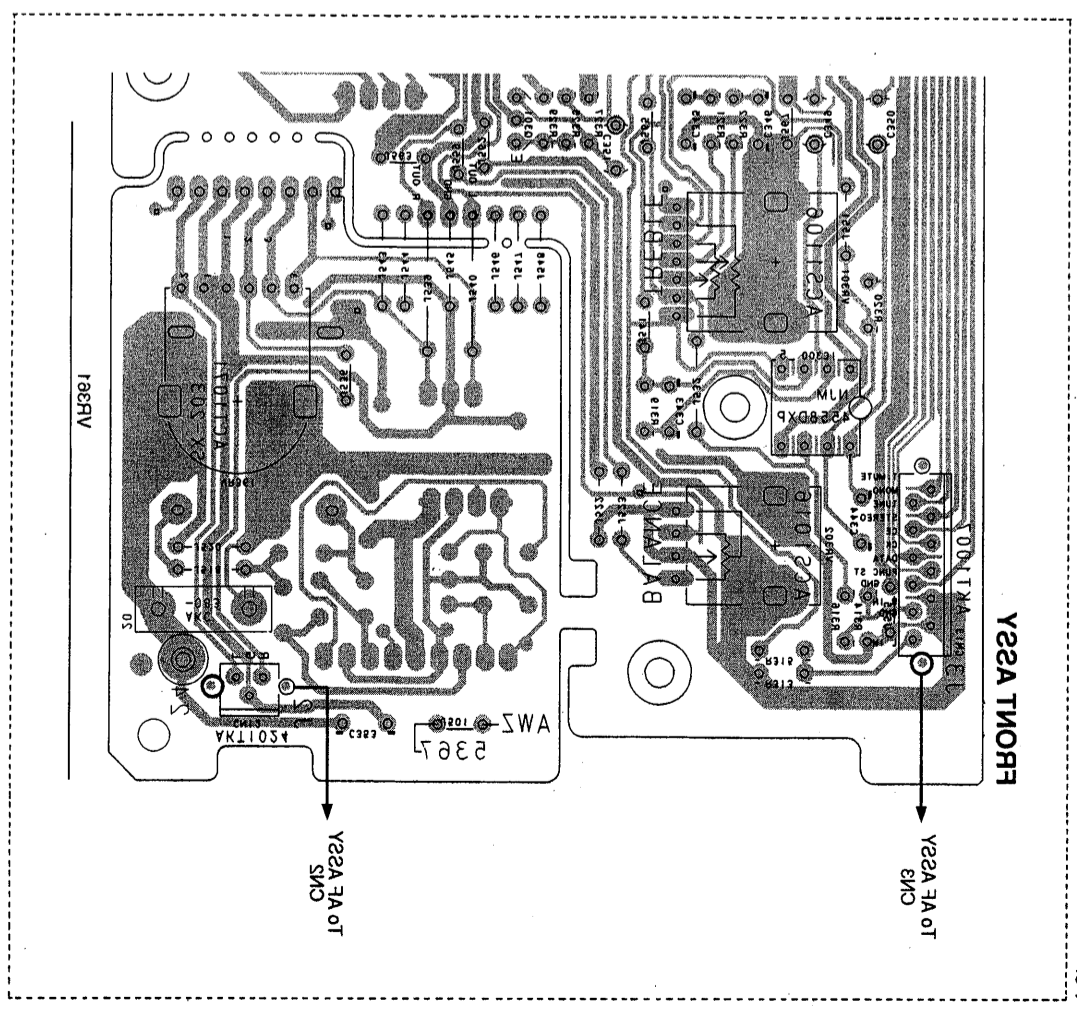
R303-R308 bus R309-R314 for R315-R320

Y22A TO CMS

R323-R328 bus R329-R334



Y22A TO CMS



Y22A TO CMS

R303-R308 bus R309-R314 for R315-R320

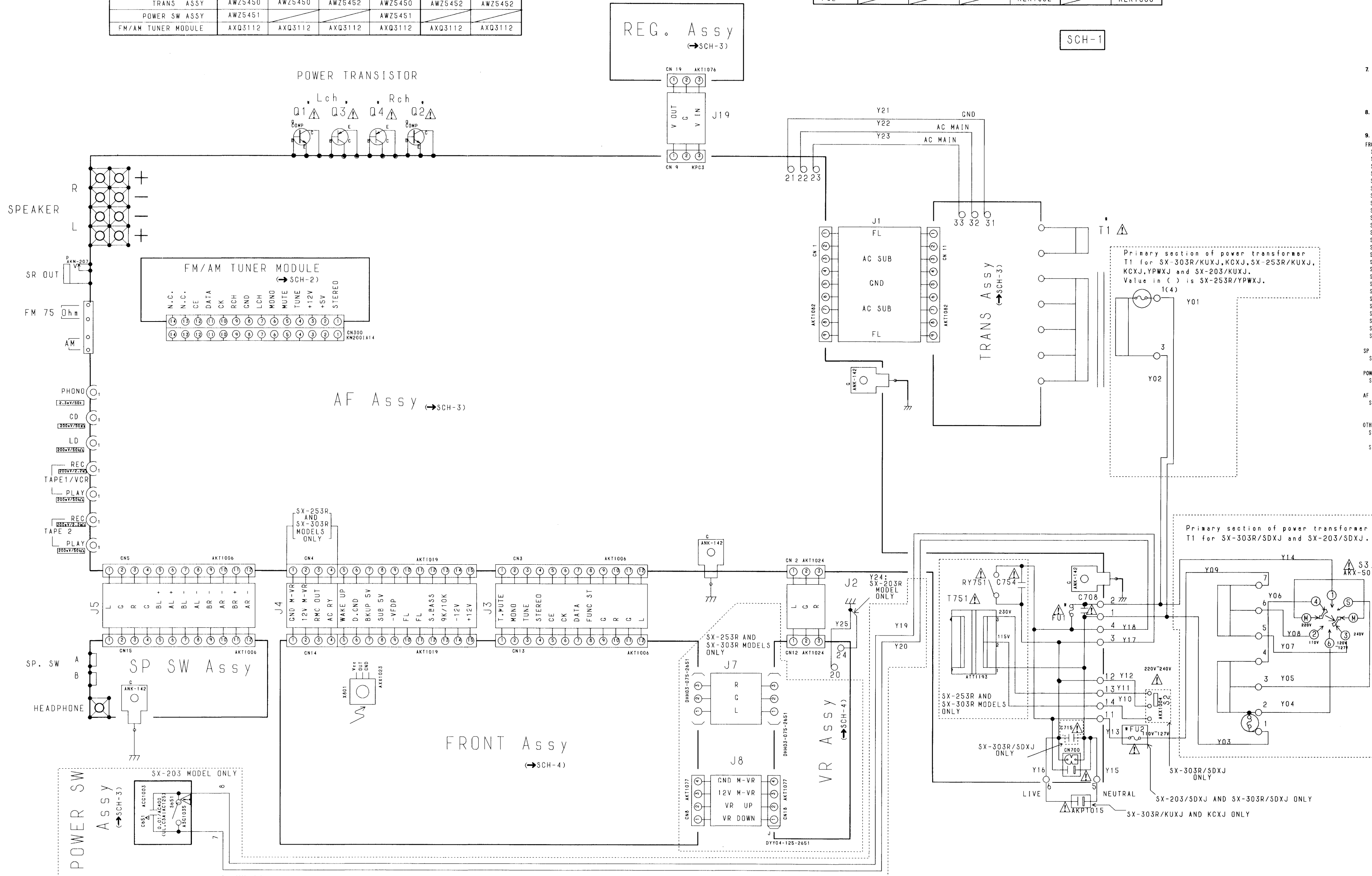
5. SCHEMATIC AND PCB CONNECTION DIAGRAMS

5.1 OVERALL WIRING DIAGRAM

MODELS	SX-203 /KUXJ	SX-253R /KUXJ	SX-303R /KUXJ	SX-203 /SDXJ	SX-253R /YPMXJ	SX-303R /SDXJ
ASSEMBLIES						
AF ASSY	AWZ5360	AWZ5364	AWZ5368	AWZ5393	AWZ5449	AWZ5395
FRONT ASSY	AWZ5361	AWZ5365	AWZ5365	AWZ5394	AWZ5365	AWZ5396
REG. ASSY	AWZ5363	AWZ5363	AWZ5363	AWZ5363	AWZ5363	AWZ5363
SP SW ASSY	AWZ5366	AWZ5366	AWZ5366	AWZ5366	AWZ5366	AWZ5366
VR ASSY		AWZ5367	AWZ5367		AWZ5367	AWZ5367
TRANS ASSY	AWZ5450	AWZ5450	AWZ5452	AWZ5450	AWZ5452	AWZ5452
POWER SW ASSY	AWZ5451			AWZ5451		
FM/AM TUNER MODULE	AXQ3112	AXQ3112	AXQ3112	AXQ3112	AXQ3112	AXQ3112

Note:
 -The parts specified as "SX-303R MODEL" are required for the SX-303R/KUXJ, KCXJ and SDXJ.
 -The parts specified as "SX-253R MODEL" are required for the SX-253R/KUXJ, KCXJ and YPMXJ.
 -The parts specified as "SX-203 MODEL" are required for the SX-203/KUXJ and SDXJ.

MODELS	SX-203 /KUXJ	SX-253R /KUXJ	SX-303R /KUXJ	SX-203 /SDXJ	SX-253R /YPMXJ	SX-303R /SDXJ
NUMBERS						
Q1, Q2	2SC4689	2SC4689	2SC3281	2SC4689	2SC4689	2SC3281
Q3, Q4	2SA1804	2SA1804	2SA1302	2SA1804	2SA1804	2SA1302
T1	ATS1526	ATS1526	ATS1524	ATS1527	ATS1543	ATS1525
FU1	REK1067 (SA)	REK1067 (SA)	AEK1002 (8A)	REK1062 (2.5A)	AEK-510 (T1.6A)	REK1066 (4A)
FU2				REK1062		REK1066



NOTE FOR SCHEMATIC DIAGRAMS Type 1A

1. When ordering service parts, be sure to refer to "PARTS LIST OF EXPLODED VIEWS" or "PCB PARTS LIST".

2. Since these are basic circuits, some parts of them or the values of some components may be changed for improvement.

3. **RESISTORS:**
 Unit: k: kΩ, M: MΩ, or Ω unless otherwise noted.
 Rated power: 1/4W, 1/6W, 1/8W, 1/10W unless otherwise noted.
 Tolerance: (F): ±1%, (G): ±2%, (K): ±10%, (M): ±20% or ±5% unless otherwise noted.

4. **CAPACITORS:**
 Unit: p: pF or μF unless otherwise noted.
 Ratings: capacitor (μF)/voltage (V) unless otherwise noted.
 Rated voltage: 50V except for electrolytic capacitors.

5. **COILS:**
 Unit: m: mH or μH unless otherwise noted.

6. **VOLTAGE AND CURRENT:**
AF AMPLIFIER SECTION:
 V: Signal voltage at rated output.
 or - V: DC voltage (V) at no input signal unless otherwise noted. Value in () is DC voltage at rated power.
TUNER SECTION:
 V: Signal voltage at FM 1kHz, 100% MOD.
 or - V: DC voltage (V) at no input signal unless otherwise noted. Value in () is DC voltage at rated power.
 mA or - mA: DC current at no input signal unless otherwise noted.

7. **OTHERS:**
 • ⊙ or ⊚: Adjusting point.
 • ⊠: Measurement point.
 • The Δ mark found on some component parts indicates the importance of the safety factor of the parts. Therefore, when replacing, be sure to use parts of identical designation.

8. **SCH-□ ON THE SCHEMATIC DIAGRAM:**
 • SCH-□ indicates the drawing number of the schematic diagram. (SCH stands for schematic diagram.)

9. **SWITCHES** (Underline indicates switch position):

FRONT ASSY
 S801: STATION CALL 0
 S802: STATION CALL 9
 S803: STATION CALL 8
 S804: STATION CALL 7
 S805: STATION CALL 6
 S806: STATION CALL 5
 S807: STATION CALL 4
 S808: STATION CALL 3
 S809: STATION CALL 2
 S810: STATION CALL 1
 S811: MEMORY
 S812: MPX MODE
 S813: MEMORY SCAN
 S814: DIRECT ACCESS
 S815: RETURN
 S816: S. BASS
 S817: TUNING +
 S818: TUNER
 S819: FM/AM
 S820: CD
 S821: LD
 S822: TUNING -
 S823: PHONO
 S824: TAPE MONITOR
 S825: TAPE/VCR
 S826: POWER (SX-303R and SX-253R only)

SP SW ASSY
 S570: SPEAKERS A: ON-OFF B: ON-OFF

POWER SW ASSY (SX-203 only)
 S651: POWER ON-OFF

AF ASSY
 S701: CHANNEL STEP (SX-303R/SDXJ and SX-203/SDXJ only)
 50kHz, 9kHz/100kHz, 1kHz

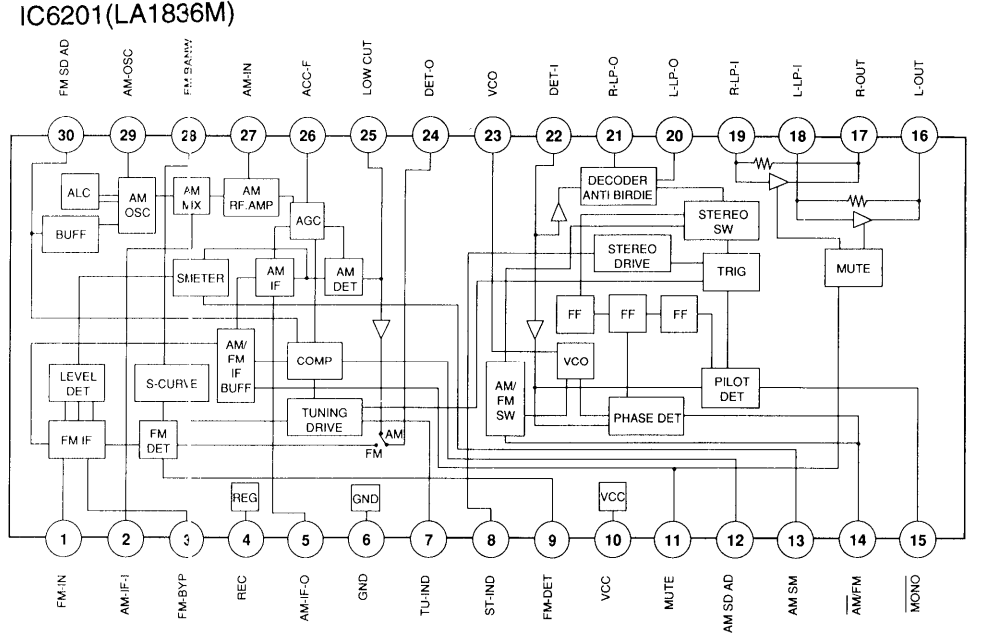
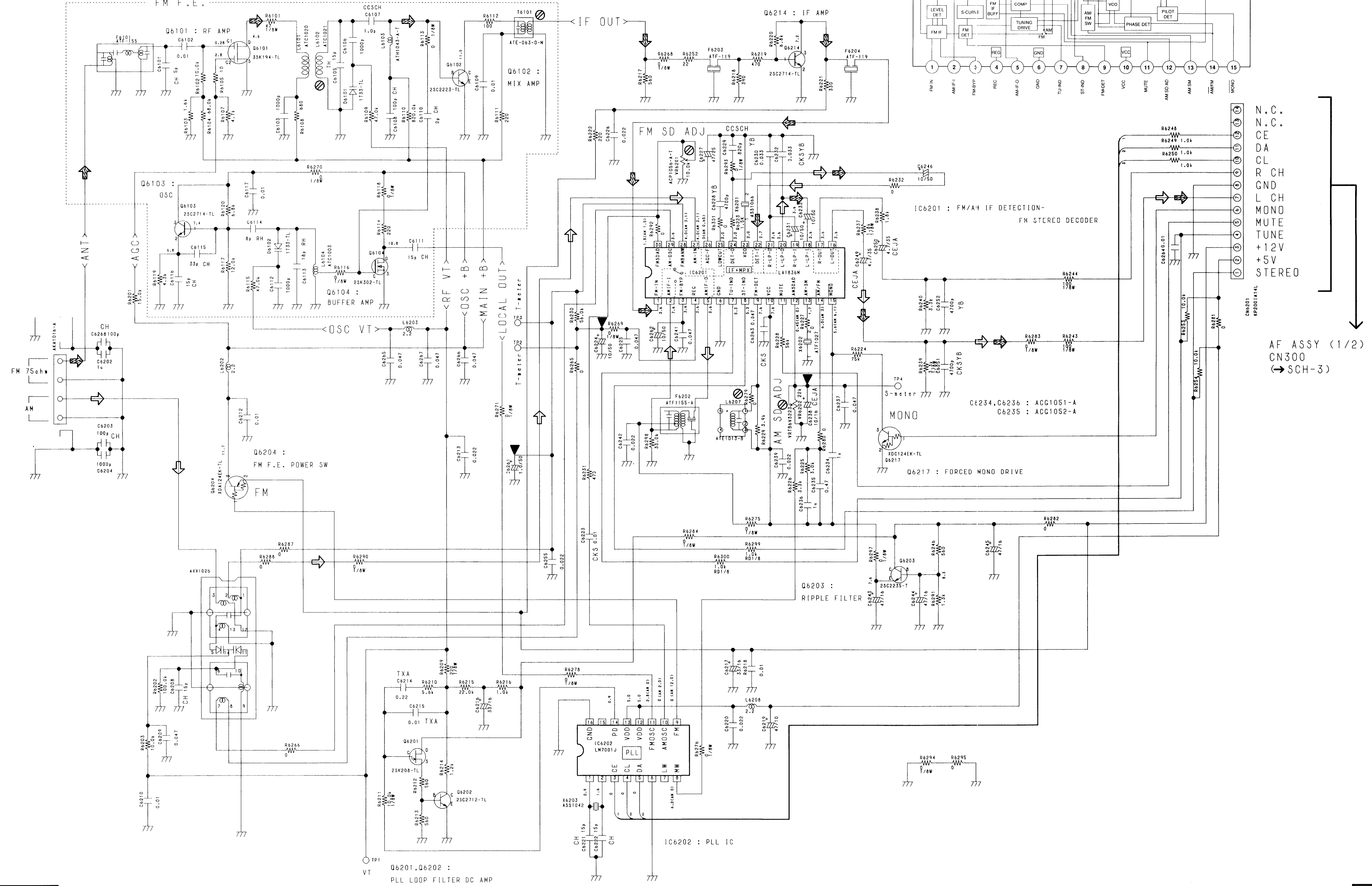
OTHERS
 S2: VOLTAGE SELECTOR (SX-303R/SDXJ only)
 110-120V/220-240V
 S3: VOLTAGE SELECTOR (SX-303R/SDXJ and SX-203/SDXJ only)
 110V/120-127V/220V/240V

5.2 FM/AM TUNER MODULE

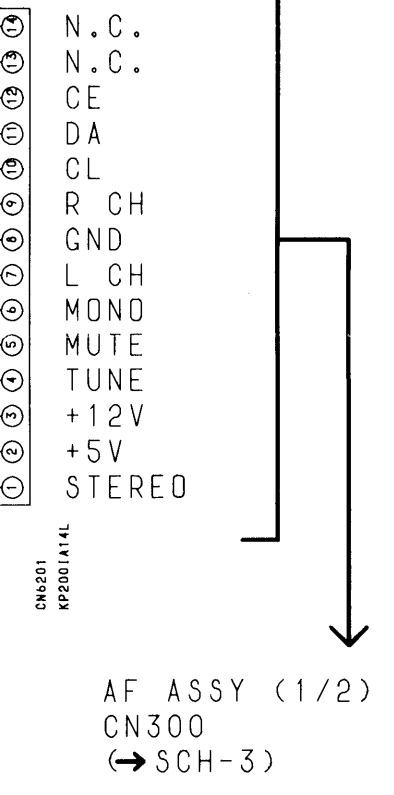
A
B
C
D
E
F

FM/AM TUNER MODULE (AXQ3112)

↗: FM signal route
↘: AM signal route



SCH-2

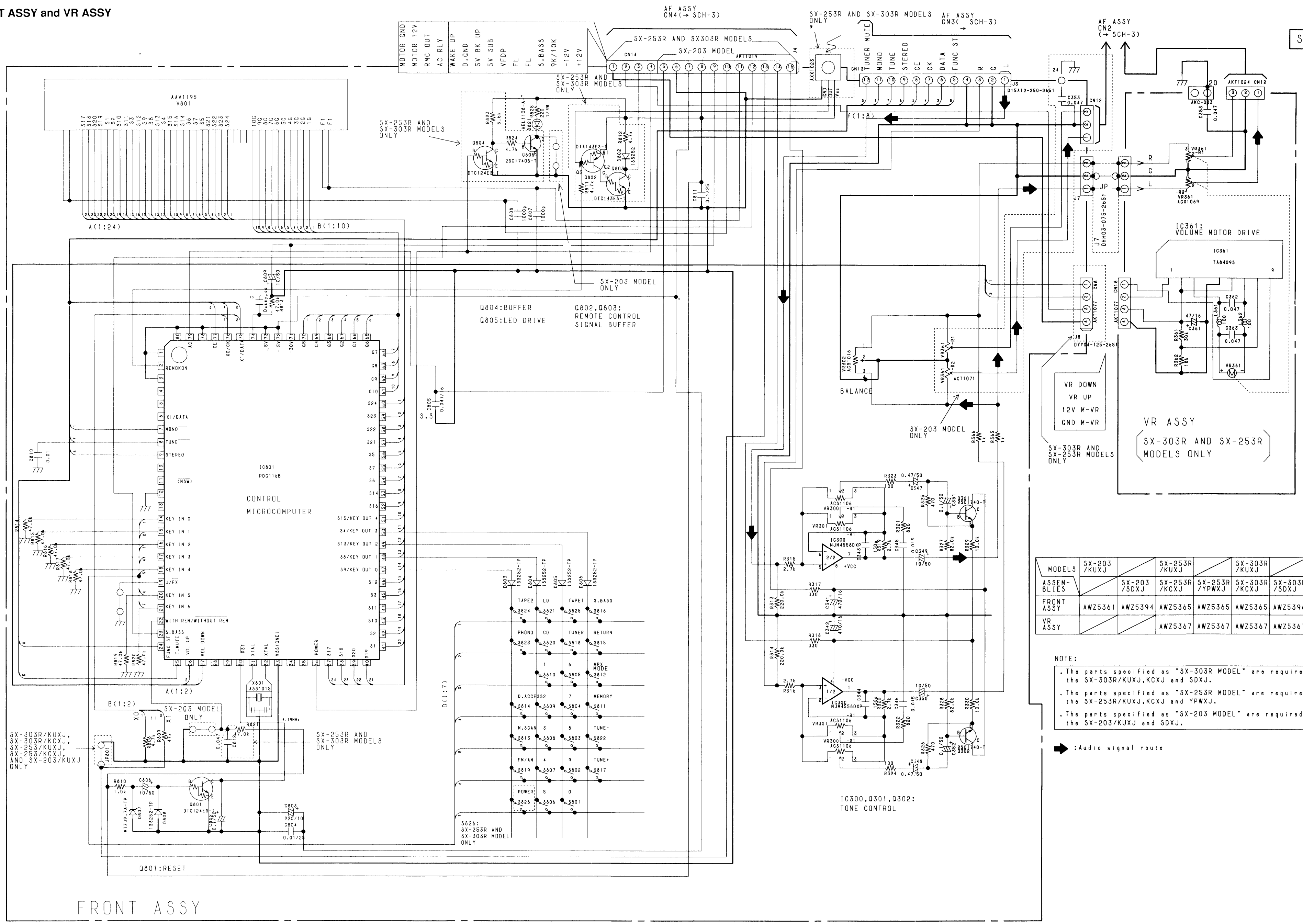


A
B
C
D
E
F

SCH-2 FM/AM TUNER MODULE

FM/AM TUNER MODULE SCH-2

5.4 FRONT ASSY and VR ASSY



MODELS	SX-203 /KUXJ	SX-253R /KUXJ	SX-303R /KUXJ
ASSEMBLIES	SX-203 /SDXJ	SX-253R /KXCJ	SX-303R /KXCJ
FRONT ASSY	AWZ5361	AWZ5394	AWZ5365
VR ASSY		AWZ5367	AWZ5367

NOTE:
 . The parts specified as "SX-303R MODEL" are required for the SX-303R/KUXJ, KXCJ and SDXJ.
 . The parts specified as "SX-253R MODEL" are required for the SX-253R/KUXJ, KXCJ and YPWXJ.
 . The parts specified as "SX-203 MODEL" are required for the SX-203/KUXJ and SDXJ.

➔ : Audio signal route

FRONT ASSY

DIODES
 Other diodes (not noted) are 13S252

SCH-4 FRONT ASSY VR ASSY

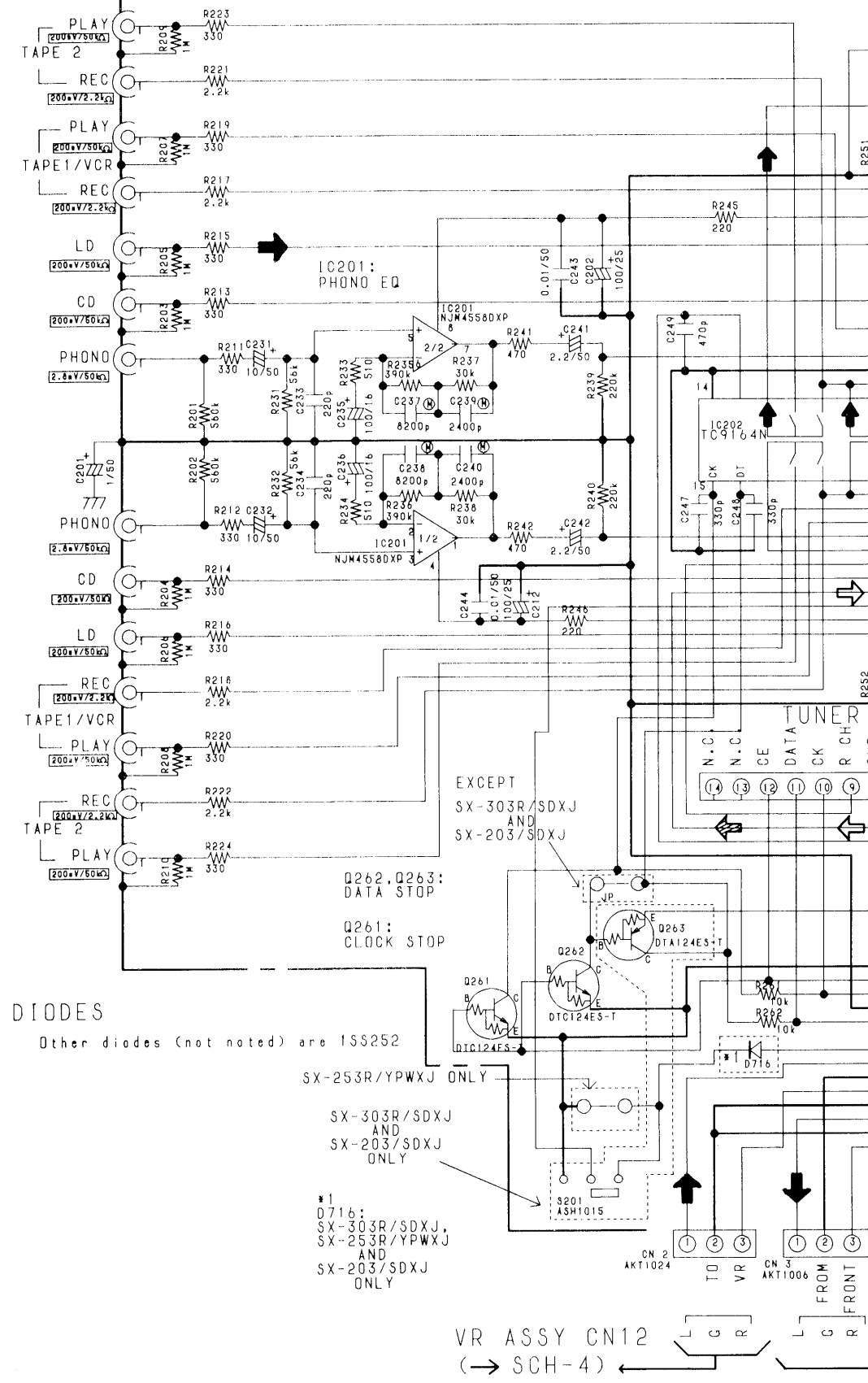
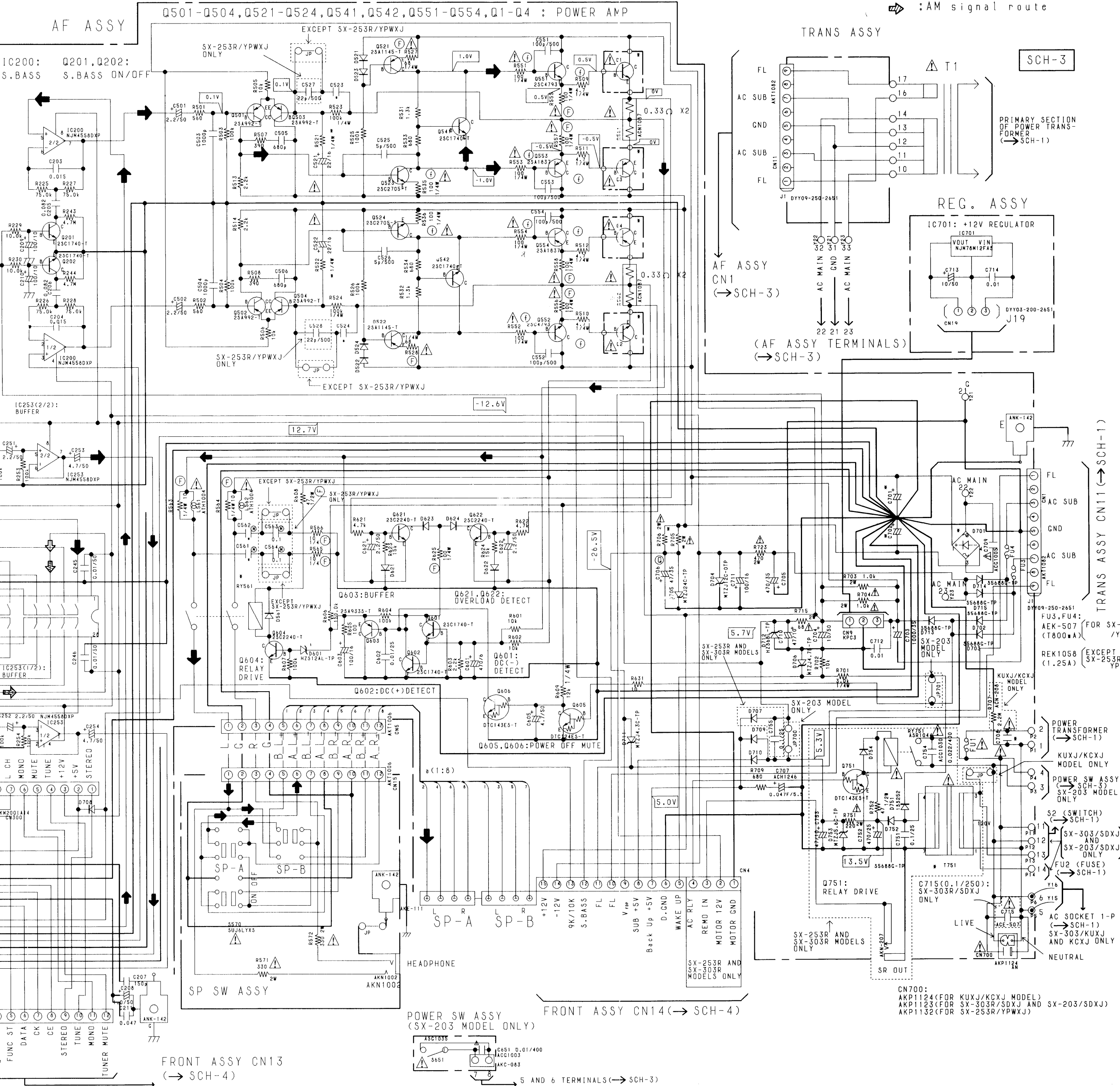
FRONT ASSY VR ASSY SCH-4

Note:
 The parts specified as "SX-303R MODEL" are required for the SX-303R/KUXJ, KCXJ and SDXJ.
 The parts specified as "SX-253R MODEL" are required for the SX-253R/KUXJ, KCXJ, SX-253R/KUXJ, KCXJ, SX-203R/KUXJ, SX-203R/KUXJ, KCXJ and YPWXJ.
 The parts specified as "SX-203 MODEL" are required for the SX-203/KUXJ and SDXJ.
 The parts specified as "SX-203 MODEL" are required for the SX-203/KUXJ, KCXJ and YPWXJ.

- ➡ : Audio signal route
- ⇨ : FM signal route
- ⇩ : AM signal route

MODELS	SX-203 /KUXJ	SX-253R /KUXJ	SX-303R /KUXJ
ASSEMBLIES	AWZ5360	AWZ5393	AWZ5368
AF ASSY	AWZ5366	AWZ5364	AWZ5366
SP SWITCH ASSY	AWZ5366	AWZ5366	AWZ5366
TRANS ASSY	AWZ5450	AWZ5450	AWZ5452
REC. ASSY	AWZ5363	AWZ5363	AWZ5363
POWER SW ASSY	AWZ5451	AWZ5451	AWZ5363

MODELS	SX-203 /KUXJ	SX-253R /KUXJ	SX-303R /KUXJ
NUMBERS	SX-203 /SDXJ	SX-253R /KXCXJ	SX-303R /SDXJ
523,524	12P	12P	12P
561,562	0.047	0.047	0.047
701,702	ACH1044 (8200/63)	ACH1044 (8200/63)	ACH1204 (8200/71)
708	ACC1003 (0.01/400)	ACC1030 (0.01/400)	ACC1030 (0.022/400)
D 701	D35BA20	D35BA20	D55B20F
521,522	910	910	750
R 705	3.3K/2W	5.3K/2W	4.7K/2W
706	2.7K/2W	2.7K/2W	4.7K/2W
715	68/2W	68/2W	68/2W
RY 561	ASR1035	ASR1035	ASR-112
T 751	ATT1223	ATT1193	ATT1223



A
B
C
D
E
F

A
B
C
D
E
F

SCH-3 AF ASSY

AF ASSY SCH-3