

# Service Manual

## ADDITIONAL INFORMATION

### AM/FM STEREO RECEIVER

**SX-727 / K UW, FVZW, FW, KCW,**

Please note that the SX-727 PROTECTOR UNIT number AWM-027 instead of AWM-011 applies to models (four versions) starting at the respective Serial numbers as follows:

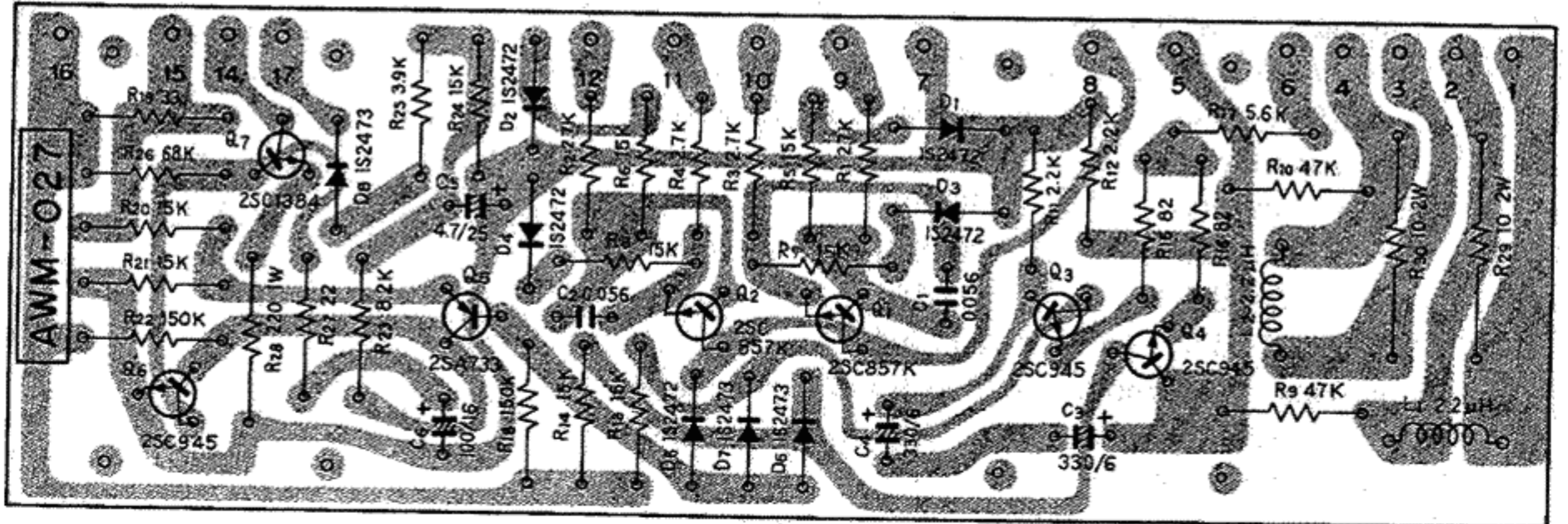
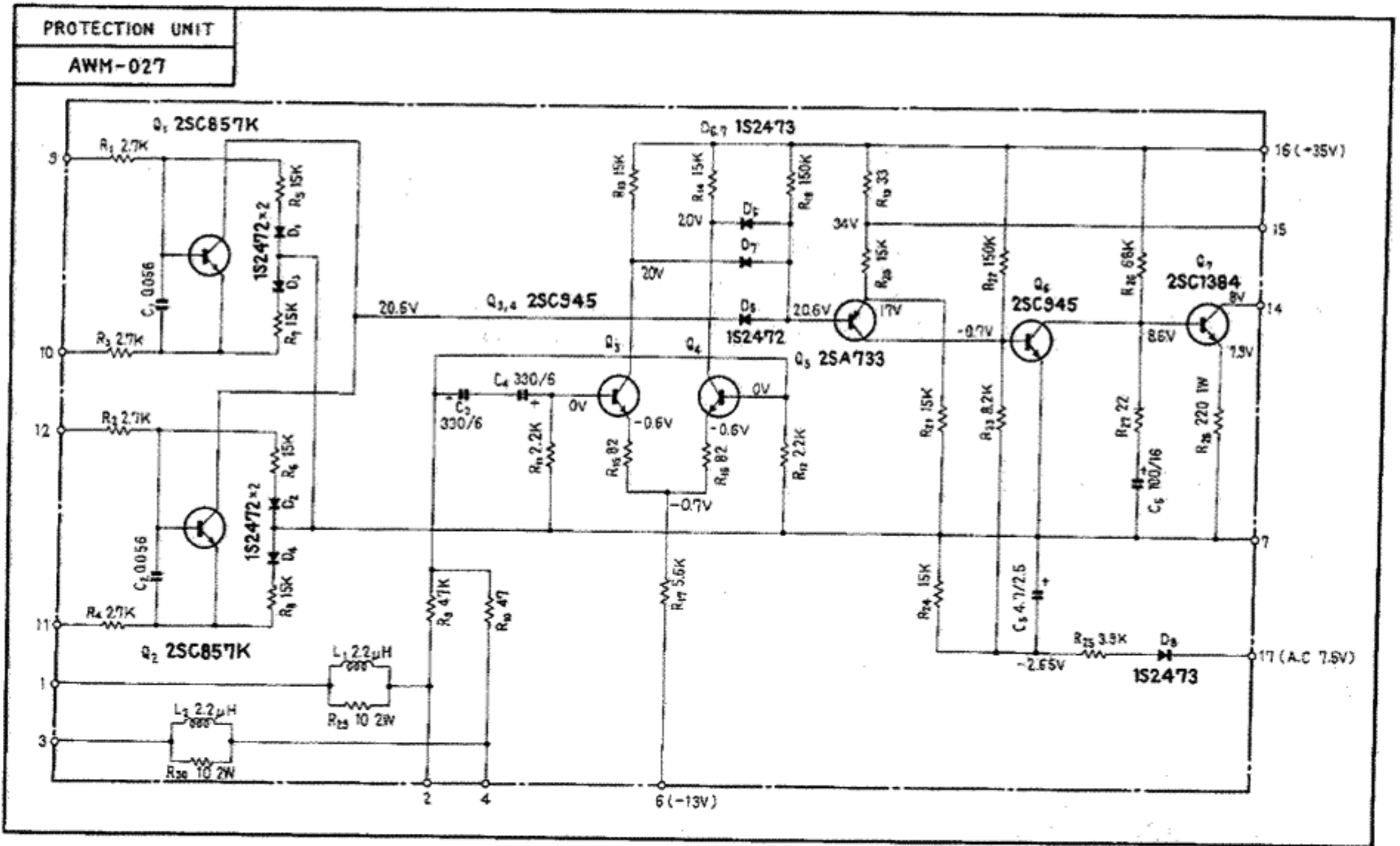
FVZW	model	1601201
FW	model	1200501
KCW	model	3500201
KUW	model	3814301

Accordingly, semiconductors used for design of the SX-727 were changed such as transistors 55 and diodes 34 in number.

You are requested to make use of this additional information together with the furnished service manual.

# PIONEER®

# 10.10 PROTECTION UNIT (AWM-027-0)



## PARTS LIST OF PROTECTION UNIT

## CAPACITORS

Symbol	Description	Part No.
C1	Mylar 0.056 50V	CQMA 563K 50
C2	Mylar 0.056 50V	CQMA 563K 50
C3	Electrolytic 330 6V	CEA 331P 6
C4	Electrolytic 330 6V	CEA 331P 6
C5	Electrolytic 4.7 25V	CEA 4R7P 25
C6	Electrolytic 100 16V	CEA 101P 16

## RESISTORS

Symbol	Description	Part No.
R1	Carbon film 2.7k	RD $\frac{1}{4}$ PS 272J
R2	Carbon film 2.7k	RD $\frac{1}{4}$ PS 272J
R3	Carbon film 2.7k	RD $\frac{1}{4}$ PS 272J
R4	Carbon film 2.7k	RD $\frac{1}{4}$ PS 272J
R5	Carbon film 15k	RD $\frac{1}{4}$ PS 153J
R6	Carbon film 15k	RD $\frac{1}{4}$ PS 153J
R7	Carbon film 15k	RD $\frac{1}{4}$ PS 153J
R8	Carbon film 15k	RD $\frac{1}{4}$ PS 153J
R9	Carbon film 47k	RD $\frac{1}{4}$ PS 473J
R10	Carbon film 47k	RD $\frac{1}{4}$ PS 473J
R11	Carbon film 2.2k	RD $\frac{1}{4}$ PS 222J
R12	Carbon film 2.2k	RD $\frac{1}{4}$ PS 222J
R13	Carbon film 15k	RD $\frac{1}{4}$ PS 153J
R14	Carbon film 15k	RD $\frac{1}{4}$ PS 153J
R15	Carbon film 82	RD $\frac{1}{4}$ PS 820J
R16	Carbon film 82	RD $\frac{1}{4}$ PS 820J
R17	Carbon film 5.6k	RD $\frac{1}{4}$ PS 562J
R18	Carbon film 150k	RD $\frac{1}{4}$ PS 154J
R19	Carbon film 33	RD $\frac{1}{4}$ PS 330J
R20	Carbon film 15k	RD $\frac{1}{4}$ PS 153J
R21	Carbon film 15k	RD $\frac{1}{4}$ PS 153J
R22	Carbon film 150k	RD $\frac{1}{4}$ PS 154J
R23	Carbon film 8.2k	RD $\frac{1}{4}$ PS 822J
R24	Carbon film 15k	RD $\frac{1}{4}$ PS 153J
R25	Carbon film 3.9k	RD $\frac{1}{4}$ PS 392J
R26	Carbon film 68k	RD $\frac{1}{4}$ PS 683J
R27	Carbon film 22	RD $\frac{1}{4}$ PS 220J
R28	Metal oxide 220 1W	RS1P 221J
R29	Metal oxide 10 2W	RS2P 100J
R30	Metal oxide 10 2W	RS2P 100J

## SEMICONDUCTORS

Symbol	Description	Part No.	
Q1	2SC857K-A Transistor		
Q2	2SC857K-A Transistor		
Q3	2SC945-Q or R Transistor		
Q4	2SC945-Q or R Transistor		
Q5	2SA733-Q or R Transistor		
Q6	2SC945-Q or R Transistor		
Q7	2SC1384-R or Q Transistor		
D1	1S2472 Diode		
D2	1S2472 Diode		
D3	1S2472 Diode		
D4	1S2472 Diode		
D5	1S2472 Diode		
D6	1S2473 Diode		
D7	1S2473 Diode		
D8	1S2473 Diode		

## COILS

Symbol	Description	Part No.	
L1	AF choke coil	T63-009-A	
L2	AF choke coil	T63-009-A	

### **PIONEER ELECTRONIC CORPORATION**

15-5, 4-Chome, Ohmori-nishi, Ohta-ku, Tokyo, Japan

### **U.S. PIONEER ELECTRONICS CORPORATION**

178 Commerce Road, Carlstadt New Jersey 07072 U.S.A.

### **PIONEER ELECTRONIC (EUROPE) N.V.**

Noorderlaan 83, 2030 Antwerp, Belgium

COPYRIGHT © AUG. 1972 PRINTED IN JAPAN