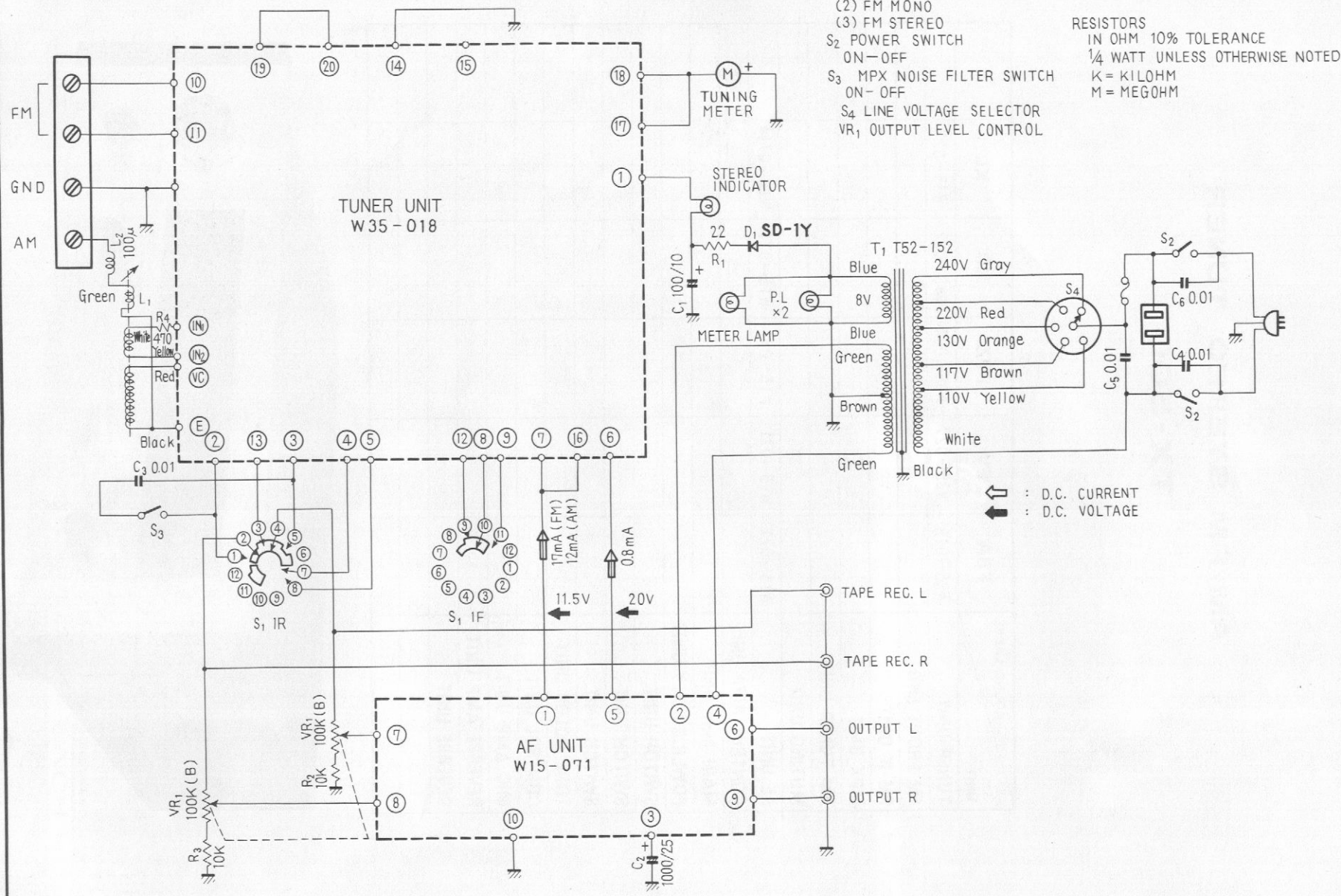


## AM/FM STEREO TUNER TX-500

ROUND LABEL UNIT	FSA	FV	FVZ	KC	KL	
TUNER UNIT	W35-018	W35-027	AWE-004	W35-027	W35-027	
FM FRONT END						
FM IF UNIT						
MPX UNIT						
AM TUNER UNIT						
MUTING UNIT						
AF UNIT	W15-071	W15-071	W15-071	W15-071	W15-071	
CONTROL AMP UNIT						
MAIN AMP UNIT						
POWER SUPPLY UNIT						
SWITCH UNIT						
SWITCH UNIT						
SWITCH UNIT						
TONE COLOR UNIT						
CONTROL UNIT						
MIC AMP UNIT						
REVERBE AMP UNIT						
REVERBE UNIT						



# TX-500 FSA



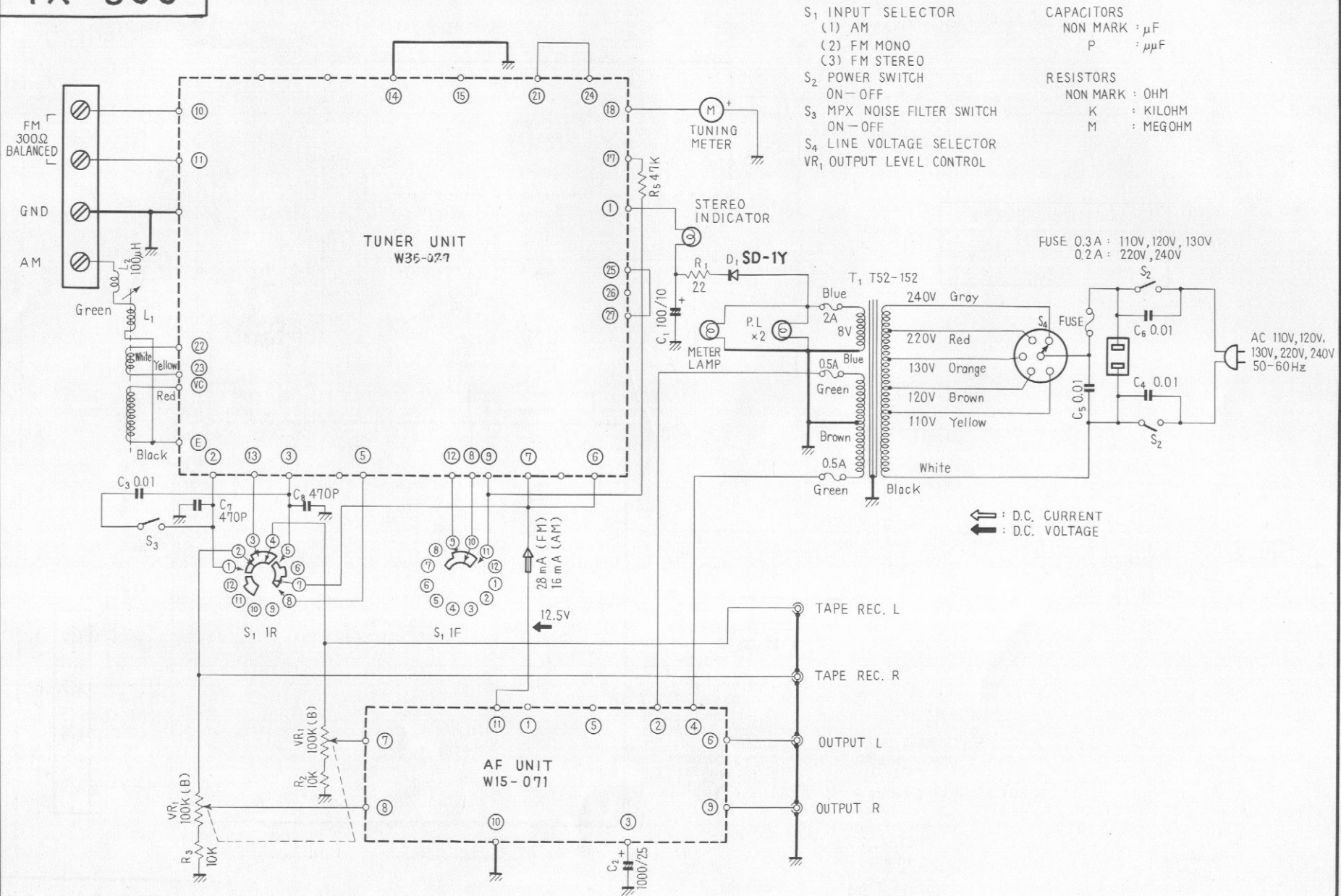
- S<sub>1</sub> INPUT SELECTOR  
 (1) AM  
 (2) FM MONO  
 (3) FM STEREO  
 S<sub>2</sub> POWER SWITCH  
 ON-OFF  
 S<sub>3</sub> MPX NOISE FILTER SWITCH  
 ON-OFF  
 S<sub>4</sub> LINE VOLTAGE SELECTOR  
 VR<sub>1</sub> OUTPUT LEVEL CONTROL

- CAPACITORS  
 IN  $\mu$ F UNLESS OTHERWISE NOTED
- RESISTORS  
 IN OHM 10% TOLERANCE  
 1/4 WATT UNLESS OTHERWISE NOTED  
 K = KILOHM  
 M = MEGOHM

⬅ : D.C. CURRENT  
 ➡ : D.C. VOLTAGE

# TX-500

TX-500 for FV model



- S<sub>1</sub> INPUT SELECTOR  
 (1) AM  
 (2) FM MONO  
 (3) FM STEREO
- S<sub>2</sub> POWER SWITCH  
 ON-OFF
- S<sub>3</sub> MPX NOISE FILTER SWITCH  
 ON-OFF
- S<sub>4</sub> LINE VOLTAGE SELECTOR
- VR<sub>1</sub> OUTPUT LEVEL CONTROL

- CAPACITORS  
 NON MARK : μF  
 P : μμF
- RESISTORS  
 NON MARK : OHM  
 K : KILOHM  
 M : MEGOHM

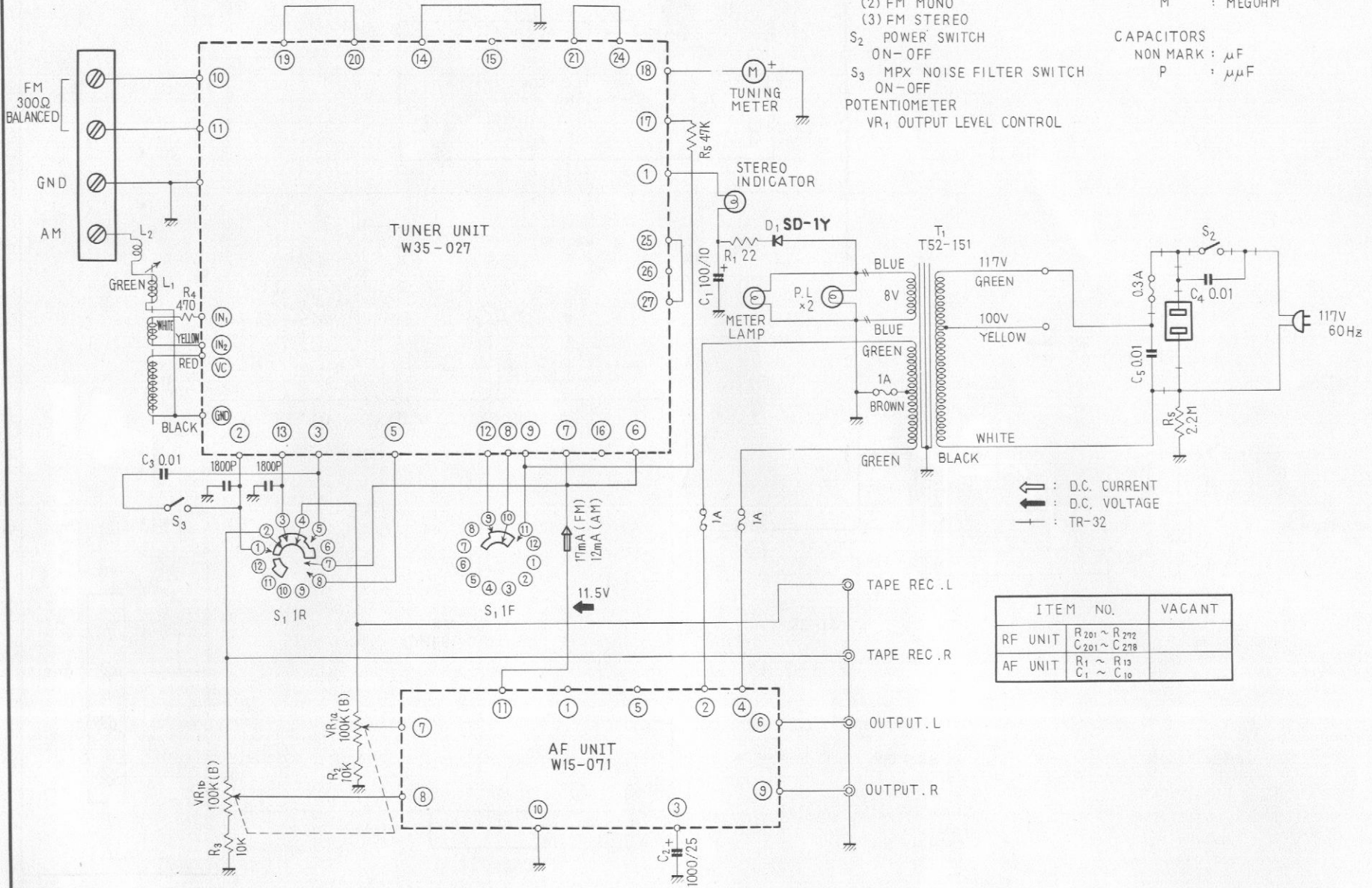
FUSE 0.3A : 110V, 120V, 130V  
 0.2A : 220V, 240V

⬆ : D.C. CURRENT  
 ⬆ : D.C. VOLTAGE

AC 110V, 120V,  
 130V, 220V, 240V  
 50-60Hz

TX-500

# TX-500



### SWITCHES

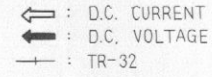
- S<sub>1</sub> INPUT SELECTOR
  - (1) AM
  - (2) FM MONO
  - (3) FM STEREO
- S<sub>2</sub> POWER SWITCH
  - ON-OFF
- S<sub>3</sub> MPX NOISE FILTER SWITCH
  - ON-OFF
- POTENTIOMETER
  - VR<sub>1</sub> OUTPUT LEVEL CONTROL

### RESISTORS

- NON MARK : OHM
- K : KILOHM
- M : MEGOHM

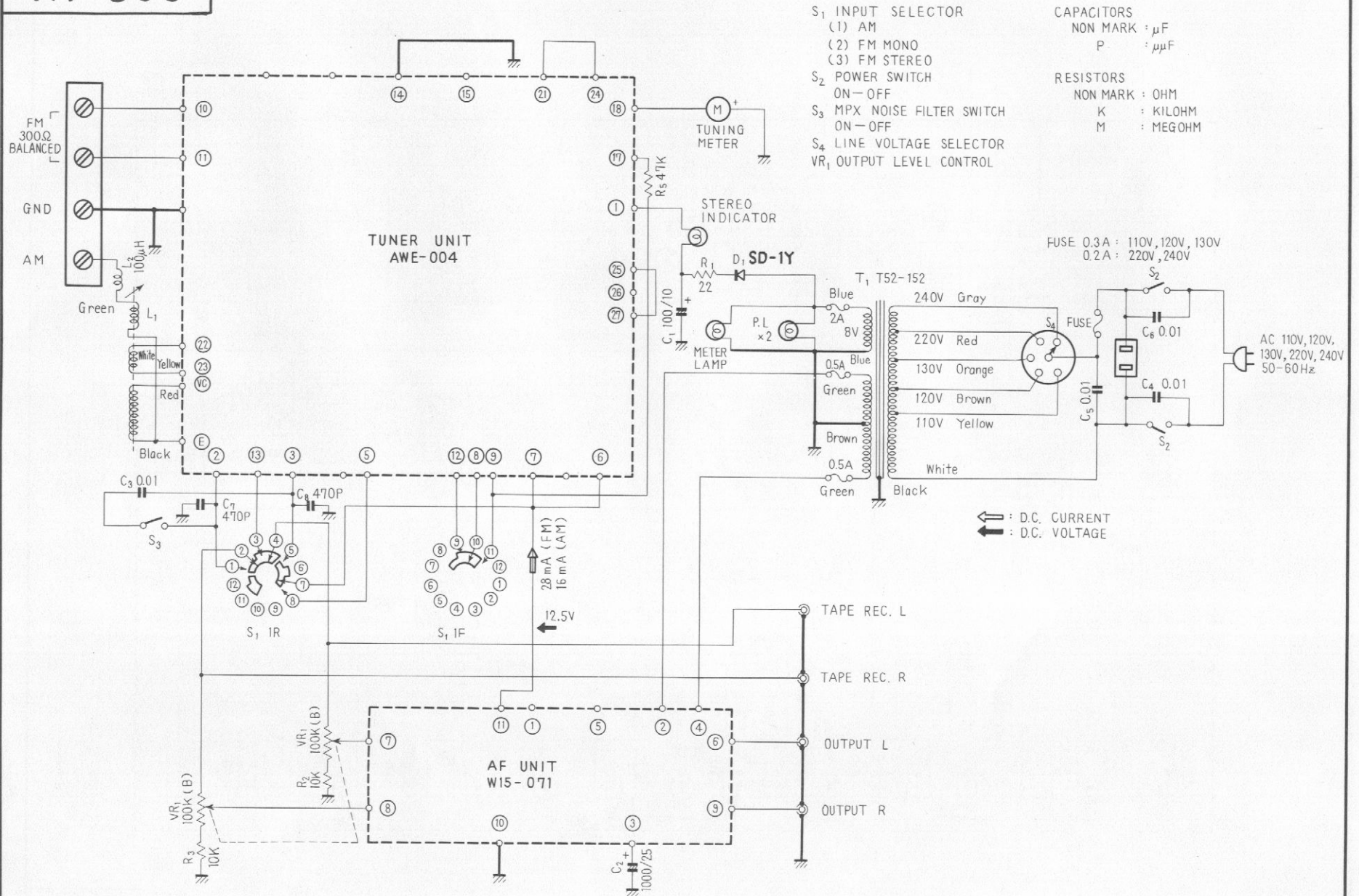
### CAPACITORS

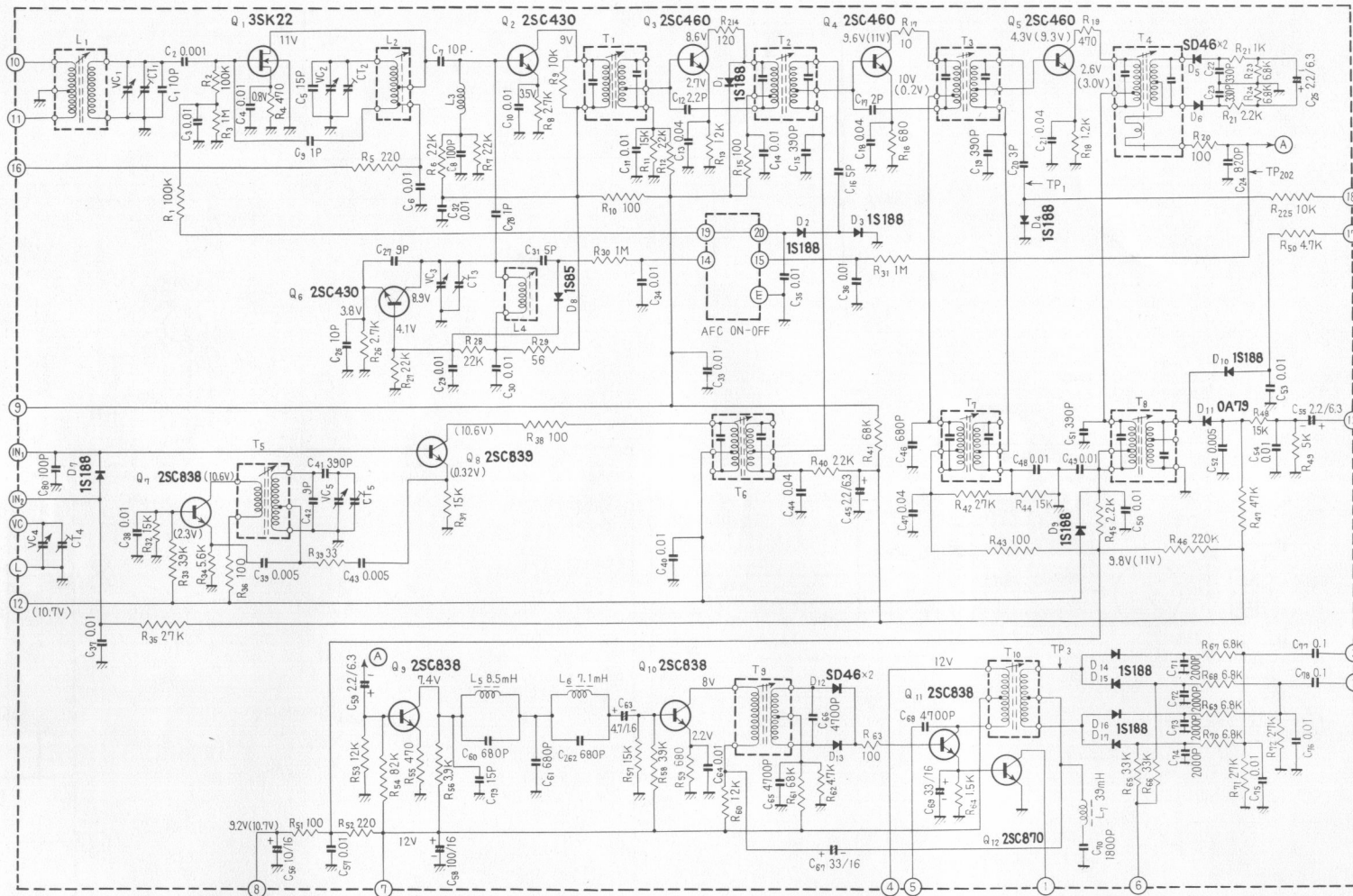
- NON MARK : μF
- P : μμF



ITEM NO.	VACANT
RF UNIT	R <sub>201</sub> ~ R <sub>272</sub> C <sub>201</sub> ~ C <sub>278</sub>
AF UNIT	R <sub>1</sub> ~ R <sub>13</sub> C <sub>1</sub> ~ C <sub>10</sub>

# TX-500

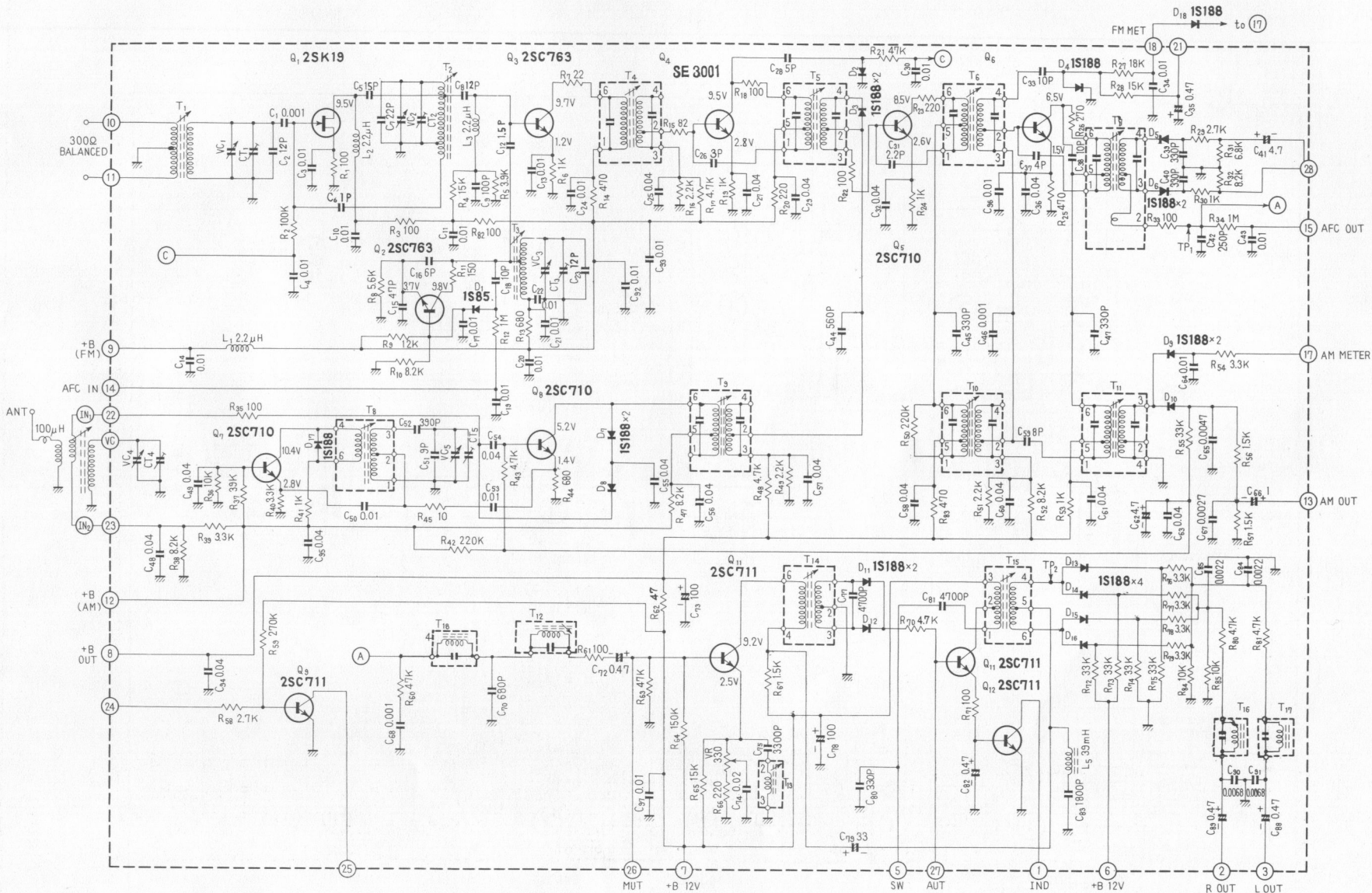


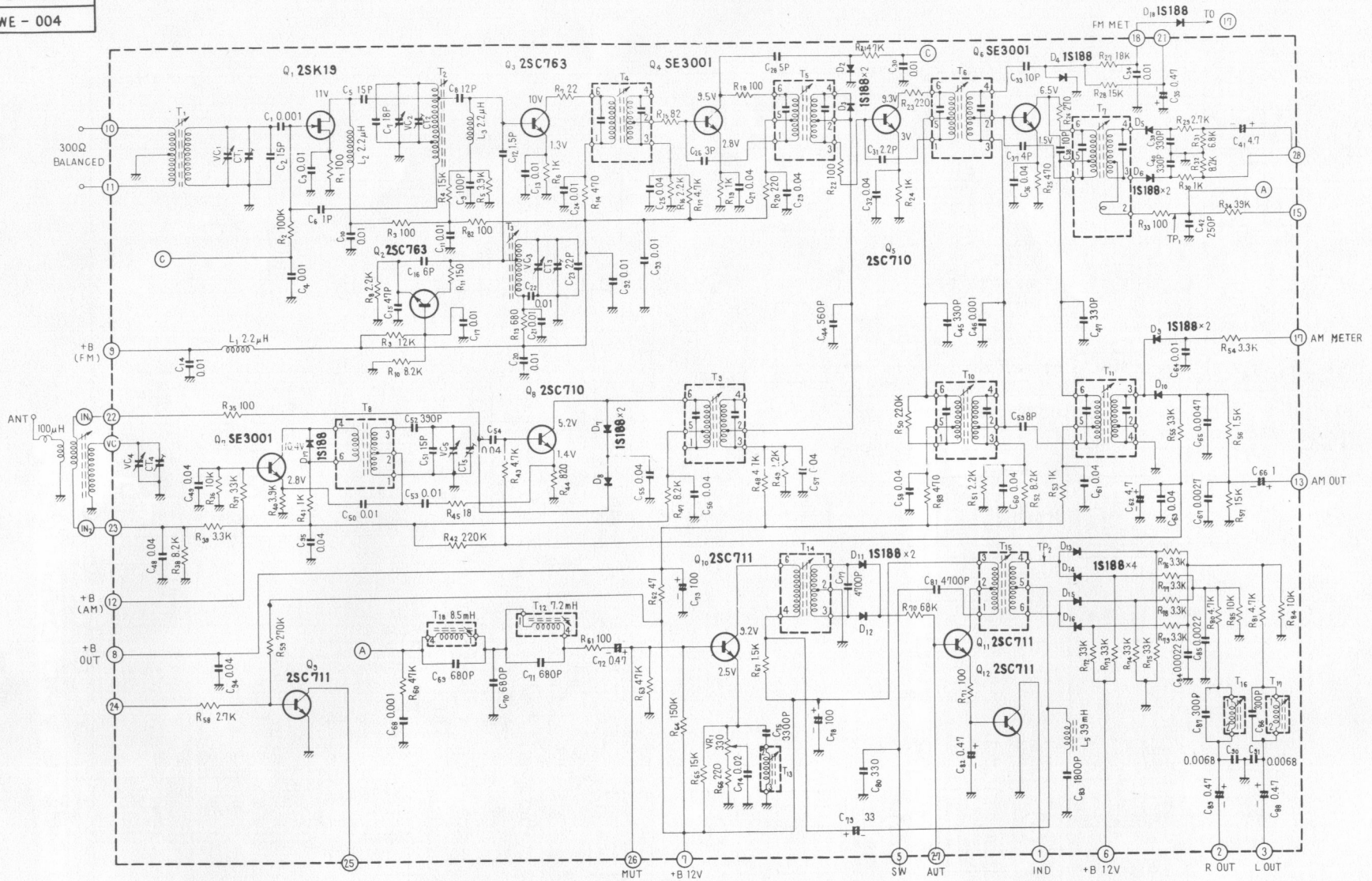


CAPACITORS  
 IN  $\mu$ F UNLESS OTHERWISE NOTED  
 P:  $\mu$ F NONMARK - CERAMIC

RESISTORS  
 IN OHM 10% TOLERANCE  
 1/4 WATT CARBON UNLESS OTHERWISE NOTED  
 K ..... KILOHM  
 M ..... MEGOHM

V DC VOLTAGE (FM)  
 (V) DC VOLTAGE (AM)







## AF UNIT

AF UNIT

W15-071

