

Pioneer

Service Manual

ORDER NO.
RRV4598

AV Receiver

VSX-530-K

VSX-430-K

THIS MANUAL IS APPLICABLE TO THE FOLLOWING MODEL(S) AND TYPE(S).

| Model | Type | Power Requirement | Remarks |
|-----------|---------|-------------------|---------|
| VSX-530-K | CUXEVSM | AC 120 V | |
| VSX-430-K | SYXEV8 | AC 220 V to 230 V | |

This service manual should be used together with the following manual(s).

| Model No. | Order No. | Remarks |
|-----------|-----------|------------------|
| VSX-523-K | RRV4418 | VSX-523-K/CUXESM |

For SPECIFICATIONS and PANEL FACILITIES, refer to the operating instructions.

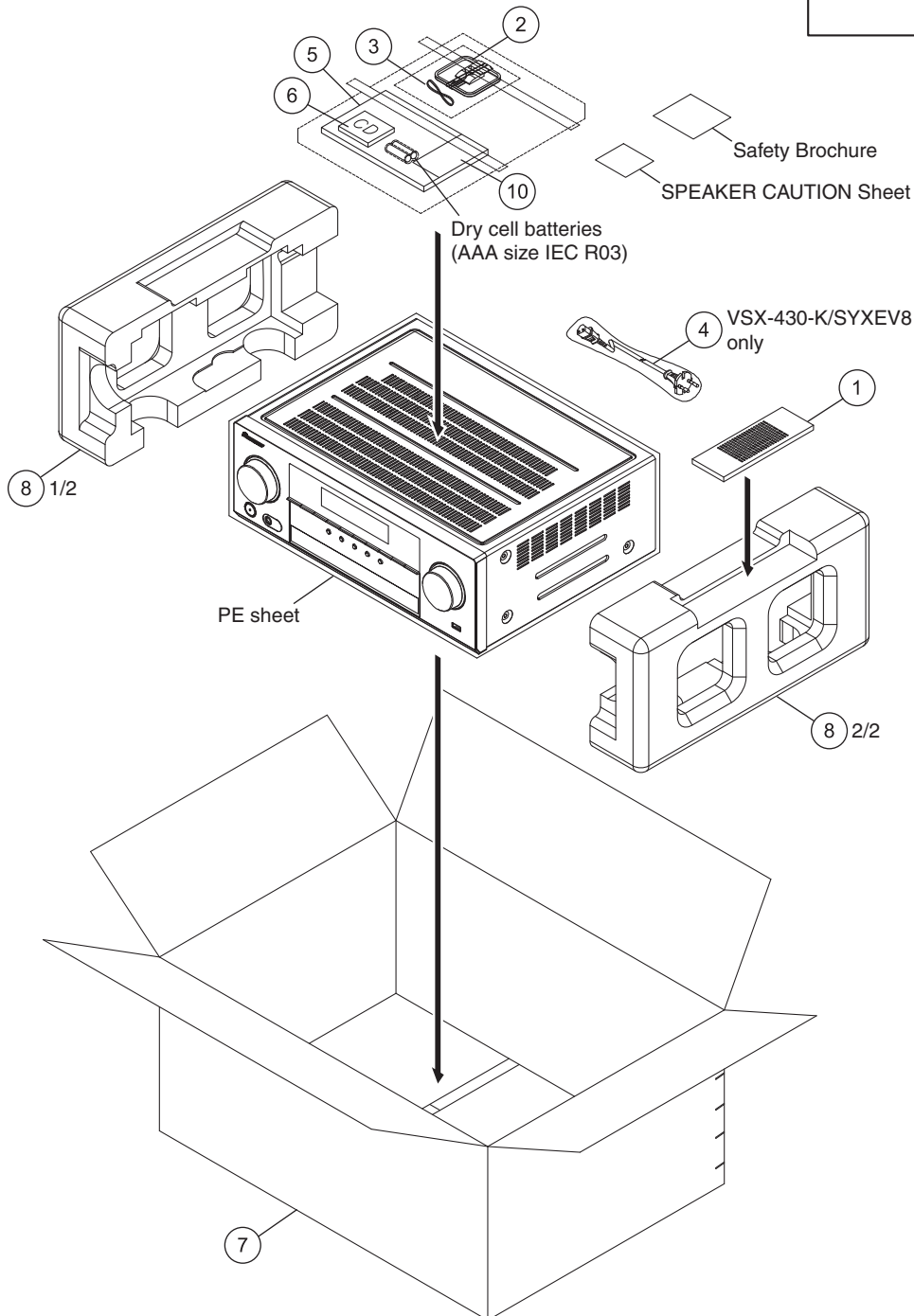
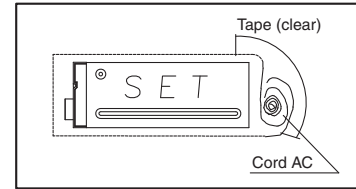
1. EXPLODED VIEWS AND PARTS LIST

NOTES: ● Parts marked by "NSP" are generally unavailable because they are not in our Master Spare Parts List.

- The \triangle mark found on some component parts indicates the importance of the safety factor of the part. Therefore, when replacing, be sure to use parts of identical designation.
- Screws adjacent to ∇ mark on product are used for disassembly.
- For the applying amount of lubricants or glue, follow the instructions in this manual. (In the case of no amount instructions, apply as you think it appropriate.)

1.1 PACKING SECTION

Poly bag packing style



(1) PACKING SECTION PARTS LIST

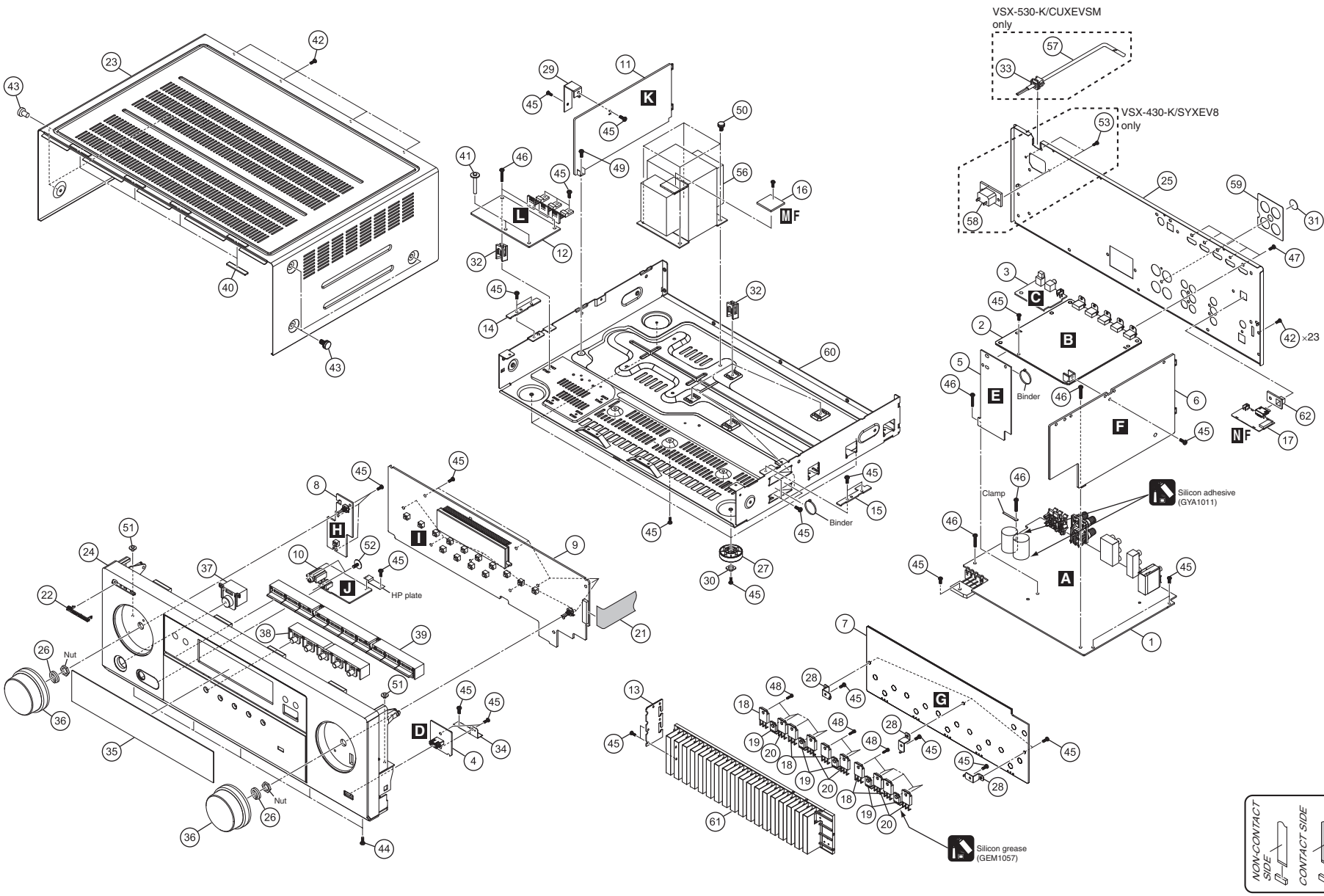
| <u>Mark No.</u> | <u>Description</u> | <u>Part No.</u> |
|-----------------|-----------------------------------|------------------------|
| | 1 Remote control | AXD7741 |
| | 2 AM Loop Antenna | E601019000010S |
| | 3 FM Wire Antenna | E605010140010S |
| ⚠ | 4 Power Cord | See Contrast table (2) |
| | 5 Quick Start Guide | See Contrast table (2) |
| | 6 Operating Instructions (CD-ROM) | See Contrast table (2) |
| | 7 Box, Gift | See Contrast table (2) |
| | 8 Cushion Snow 423 | 6230213384100S |
| | 9 ••••• | |
| NSP | 10 Warranty Card | ARY7172 |

(2) CONTRAST TABLE

VSX-530-K/CUXEVSM and VSX-430-K/SYXEV8 are constructed the same except for the following:

| <u>Mark</u> | <u>No.</u> | <u>Symbol and Description</u> | <u>VSX-530-K /CUXEVSM</u> | <u>VSX-430-K /SYXEV8</u> |
|-------------|------------|---------------------------------|-------------------------------|------------------------------|
| ⚠ | 4 | Power Cord | Not used | L068250160070S |
| | 5 | Quick Start Guide | 5707000010050S | 5707000010060S |
| | 6 | Operating Instructions (CD-ROM) | 6517000002180S | 6517000002190S |
| | 7 | Box, Gift | 60072125800F0S | 60072125800G0S |

1.2 EXTERIOR SECTION



4
1
2
3
4

1
2
3
4

F E D C B A

(1) EXTERIOR SECTION PARTS LIST

| <u>Mark No.</u> | <u>Description</u> | <u>Part No.</u> | <u>Mark No.</u> | <u>Description</u> | <u>Part No.</u> |
|-----------------|-------------------------|------------------------|-----------------|--------------------|------------------------|
| 1 | MAIN Assy | See Contrast table (2) | 32 | PCB Support (ABS) | 4070001601020S |
| 2 | D-MAIN Assy | 7028077971010 | 33 | Stopper | See Contrast table (2) |
| 3 | OPTCO Assy | 7028077923010 | 34 | Plate | 4470212736000S |
| 4 | FUSB Assy | 7028077963010 | 35 | Window | 50772131130T0S |
| 5 | CONCT Assy | 7028077965010 | 36 | Knob | 5080212431000S |
| 6 | CPU Assy | See Contrast table (2) | 37 | Standby Button | 5090213741100S |
| 7 | AMP5 Assy | 70280745410R0 | 38 | 5 Key Button | 5090214561200S |
| 8 | INSEL Assy | 7028077964010 | 39 | 10 Key Button | 5090214571200S |
| 9 | FRONT Assy | See Contrast table (2) | 40 | Sheet | 1210210235000SV |
| 10 | HP Assy | 7028077962010 | 41 | Screw | 1500001206020SV |
| ⚠ | 11 SMPS Assy | See Contrast table (2) | 42 | Screw | BBT30P100FTB |
| 12 | REG Assy | See Contrast table (2) | 43 | Screw | 1500040083B10SV |
| 13 | WG Assy | 70280745420R0 | 44 | Screw | BBZ30P080FTB |
| 14 | G-L Assy | 7028077925010 | 45 | Screw | BBZ30P080FTC |
| 15 | G-R Assy | 7028077926010 | 46 | Screw | BBZ30P180FTC |
| 16 | NTC Assy | 7028077924010 | 47 | Screw | BSZ30P040FTB |
| 17 | BT Assy | 7028077941010 | 48 | Screw | B018230141H11SV |
| 18 | Semi, TR/GE PNP 2SB | J5011560Y0000S | 49 | Screw | B020230063B10-IL |
| 19 | Semi, TR/GE NPN 2SC | J502396400010S | 50 | Screw | B028940101B11-IL |
| 20 | Semi, TR/GE NPN 2SD | J5032390Y0000S | 51 | Screw | 1500001206010SV |
| 21 | Cable, Flat Card 1.0 mm | N711250822480S | 52 | Screw | 1500001456010SV |
| 22 | Pioneer Badge B (PLS) | XAM3006 | 53 | Screw | See Contrast table (2) |
| 23 | Cabinet VSX-523 | 3008212076000V | 54 | ••••• | |
| 24 | Panel | See Contrast table (2) | 55 | ••••• | |
| 25 | Back Chassis 530CU | 3207215246000S | ⚠ | 56 Power Trans | See Contrast table (2) |
| 26 | Spring | 3720210556000S | ⚠ | 57 Power Cord | See Contrast table (2) |
| 27 | Foot (PLS) | 4000210391010S | ⚠ | 58 AC Inlet | See Contrast table (2) |
| 28 | HS Bracket | 4010056906010S | 59 | Sheet | 1210210772100SV |
| 29 | SMPS Bracket | 401021488600DS | 60 | Chassis | See Contrast table (2) |
| 30 | Cushion | 4050211605000SV | 61 | Heatsink | 2120212168010S |
| 31 | SP Screw Cushion | 4050211745100SV | 62 | BT Cover | 4310216061100S |

(2) CONTRAST TABLE

VSX-530-K/CUXEVSM and VSX-430-K/SYXEV8 are constructed the same except for the following:

| <u>Mark</u> | <u>No.</u> | <u>Symbol and Description</u> | <u>VSX-530-K /CUXEVSM</u> | <u>VSX-430-K /SYXEV8</u> |
|-------------|------------|-------------------------------|-------------------------------|------------------------------|
| ⚠ | 1 | MAIN Assy | 7028077921010 | 7028077921020 |
| | 6 | CPU Assy | 7028077931010 | 7028077931020 |
| | 9 | FRONT Assy | 7028077961010 | 7028077961020 |
| | 11 | SMPS Assy | 70280733610W0 | 70280733610Y0 |
| | 12 | REG Assy | 7028077922010 | 7028077922020 |
| ⚠ | 24 | Panel | 3067215861010S | 3067215861140S |
| | 33 | Stopper | 4380040162010S | Not used |
| | 53 | Screw | Not used | CBZ30P080FTB |
| ⚠ | 56 | Power Trans | 8200960611680S | 8200960611690S |
| | 57 | Power Cord | L068125101710S | Not used |
| ⚠ | 58 | AC Inlet | Not used | G430040807010S |
| | 60 | Chassis | 3200214556211S | 3207215246100S |

2. CONTRAST OF MISCELLANEOUS PARTS

NOTES: ● Parts marked by "NSP" are generally unavailable because they are not in our Master Spare Parts List.

● The Δ mark found on some component parts indicates the importance of the safety factor of the part. Therefore, when replacing, be sure to use parts of identical designation.

● When ordering resistors, first convert resistance values into code form as shown in the following examples.

Ex.1 When there are 2 effective digits (any digit apart from 0), such as 560 ohm and 47 k ohm (tolerance is shown by J = 5%, and K = 10%).

560 Ω → 56 × 10¹ → 561 RD1/APU $\begin{matrix} 5 & 6 & 7 \\ \hline \end{matrix}$ J

47 k Ω → 47 × 10³ → 473 RD1/APU $\begin{matrix} 4 & 7 & 3 \\ \hline \end{matrix}$ J

0.5 Ω → R50 RN2H $\begin{matrix} R & 5 & 0 \\ \hline \end{matrix}$ K

1 Ω → 1R0 RSIP $\begin{matrix} 1 & R & 0 \\ \hline \end{matrix}$ K

Ex.2 When there are 3 effective digits (such as in high precision metal film resistors).

5.62 k Ω → 562 × 10¹ → 5621 RN1/4PC $\begin{matrix} 5 & 6 & 2 & 1 \\ \hline \end{matrix}$ F

B CONTRAST TABLE

VSX-523-K/CUXESM, VSX-530-K/CUXEVSM and VSX-430-K/SYXEVB are constructed the same except for the following:

| Mark | No. | Symbol and Description | VSX-523-K /CUXESM | VSX-530-K /CUXEVSM | VSX-430-K /SYXEVB | Remarks |
|-----------------------|-------|------------------------|----------------------|-----------------------|----------------------|---------|
| PCB ASSEMBLIES | | | | | | |
| NSP | | 1..PCB TTL ASSY MAIN | 7025HK1211010-IL | 7025HK1408010 | 7025HK1408020 | |
| | No.1 | 2..MAIN ASSY | 7028073311010-IL | 7028077921010 | 7028077921020 | |
| | No.12 | 2..REG ASSY | 7028073312010-IL | 7028077922010 | 7028077922020 | |
| | No.3 | 2..OPTCO ASSY | 7028073313010-IL | 7028077923010 | 7028077923010 | |
| | No.16 | 2..NTC ASSY | Not used | 7028077924010 | 7028077924010 | |
| | No.13 | 2..WG ASSY | 7028073315010-IL | Not used | Not used | |
| | No.14 | 2..G-L ASSY | 7028073316010-IL | 7028077925010 | 7028077925010 | |
| | No.15 | 2..G-R ASSY | 7028073317010-IL | 7028077926010 | 7028077926010 | |
| NSP | | 1..PCB TTL ASSY FRONT | 7025HK1211011-IL | 7025HK1408011 | 7025HK1408021 | |
| | No.9 | 2..FRONT ASSY | 7028073321010-IL | 7028077961010 | 7028077961020 | |
| | No.10 | 2..HP ASSY | Not used | 7028077962010 | 7028077962010 | |
| | No.10 | 2..HPMIC ASSY | 7028073322010-IL | Not used | Not used | |
| | No.4 | 2..FUSB ASSY | 7028073323010-IL | 7028077963010 | 7028077963010 | |
| | No.8 | 2..INSEL ASSY | 7028073324010-IL | 7028077964010 | 7028077964010 | |
| | No.5 | 2..CONCT ASSY | 7028073325010-IL | 7028077965010 | 7028077965010 | |
| NSP | | 1..PCB TTL ASSY DMAIN | 7025HK1211012-IL | 7025HK1408012 | 7025HK1408022 | |
| | No.2 | 2..D-MAIN ASSY | 7028073351010-IL | 7028077971010 | 7028077971010 | |
| NSP | | 1..PCB TTL ASSY CPU | 7025HK1211013-IL | 7025HK1408013 | 7025HK1408023 | |
| | No.6 | 2..CPU ASSY | 7028073331010-IL | 7028077931010 | 7028077931020 | |
| NSP | | 1..PCB TTL ASSY AMP5 | 7025HK1211014-IL | 7025HK1408014 | 7025HK1408024 | |
| | No.7 | 2..AMP5 ASSY | 7028073341010-IL | 70280745410R0 | 70280745410R0 | |
| | No.13 | 2..WG ASSY | Not used | 70280745420R0 | 70280745420R0 | |
| NSP | | 1..PCB TTL ASSY SMPS | 7025HK1211015-IL | 7025HK1408015 | 7025HK1408025 | |
| Δ | No.11 | 2..SMPS ASSY | 7028073361010-IL | 70280733610W0 | 70280733610Y0 | |
| NSP | | 1..PCB TTL ASSY BT | Not used | 7025HK1408016 | 7025HK1408026 | |
| | No.17 | 2..BT ASSY | Not used | 7028077941010 | 7028077941010 | |

Notes : For PCB ASSEMBLIES, Refer to "CONTRAST OF PCB ASSEMBLIES".

CONTRAST OF PCB ASSEMBLIES

CF OPTCO ASSY

Although 7028073313010-IL and 7028077923010 are different and are NOT COMPATIBLE! Some components on these assy's are different. Since these different components are not available as service part, they are not listed.

DF FUSB ASSY

Although 7028073323010-IL and 7028077963010 are different and are NOT COMPATIBLE! Some components on these assy's are different. Since these different components are not available as service part, they are not listed.

EF CONCT ASSY

7028073325010-IL and 7028077965010 are constructed the same with the exception of some components, including the following:

| Mark | Symbol and Description | 7028073325010-IL | 7028077965010 |
|------|------------------------|------------------|----------------|
| | CN109 CN, Wafer | L109012511520-IL | L109012511540S |

Note: This list is not complete. Only components that are available as service part are listed!

GF AMP5 ASSY

7028073341010-IL and 70280745410R0 are constructed the same with the exception of some components, including the following:

| Mark | Symbol and Description | 7028073341010-IL | 70280745410R0 |
|------|------------------------|------------------|------------------|
| | Q1 | J5001024Y0050-IL | J5000992FA050-IL |
| | Q452 | J5000992FA050-IL | J5001024Y0050-IL |

Note: This list is not complete. Only components that are available as service part are listed!

HF INSEL ASSY

Although 7028073324010-IL and 7028077964010 are different and are NOT COMPATIBLE! Some components on these assy's are different. Since these different components are not available as service part, they are not listed.

IF FRONT ASSY

7028073321010-IL, 7028077961010 and 7028077961020 are constructed the same with the exception of some components, including the following:

| Mark | Symbol and Description | 7028073321010-IL | 7028077961010 | 7028077961020 |
|------|------------------------|------------------|------------------|------------------|
| | IC701 | J127163150020-IL | J127197044010-IL | J127197044010-IL |
| | D701, D702 | K500052009011-IL | Not used | Not used |
| ⚠ | R779, R780 | C060001063050-IL | C060001063050-IL | C0602R2063050-IL |
| | S9701 SW, Encoder | G121122400230-IL | G121122400231S | G121122400231S |

Note: This list is not complete. Only components that are available as service part are listed!

JF HPMIC ASSY / HP ASSY

7028073322010-IL (HPMIC Assy) and 7028077962010 (HP Assy) are constructed the same with the exception of some components, including the following:

| Mark | Symbol and Description | 7028073322010-IL | 7028077962010 |
|------|------------------------|------------------|---------------|
| | IC902 | J121458001010-IL | Not used |
| | JA702 Jack, D3.5 | G40132340000Y-IL | Not used |

Note: This list is not complete. Only components that are available as service part are listed!

KF SMPS ASSY

7028073361010-IL, 70280733610W0 and 70280733610Y0 are constructed the same with the exception of some components, including the following:

| Mark | Symbol and Description | 7028073361010-IL | 70280733610W0 | 70280733610Y0 |
|------|--------------------------|------------------|------------------|------------------|
| | C112 | Not used | D041330088050S | D041330088050S |
| | R106 | Not used | C060012466050-IL | C060012466050-IL |
| | CN9100 CN, Wafer 7.92 mm | L108396030010-IL | L108396030010-IL | Not used |

The mounting positions of the additional parts are described in the circuit diagram and PCB diagram of the parent manual.

Note: This list is not complete. Only components that are available as service part are listed!

LF REG ASSY

Although 7028073312010-IL, 7028077922010 and 7028077922020 are different and are NOT COMPATIBLE! Some components on these assy's are different. Since these different components are not available as service part, they are not listed.

G-L, G-R and WG ASSEMBLIES

There is no service parts.

A PCB PARTS LIST

• CONTRAST OF PCB ASSEMBLIES for VSX-530-K/CUXEVSM and VSX-430-K/SYXEV8

AF MAIN ASSY

7028077921010 and 7028077921020 are constructed the same with the exception of some components, including the following:

| Mark | Symbol and Description | 7028077921010 | 7028077921020 |
|------|------------------------|----------------|----------------|
| | 601 Tuner, FM/AM | E903004100781S | E903104100781S |

Note: This list is not complete. Only components that are available as service part are listed!

BF CPU ASSY

Although 7028077931010 and 7028077931020 are different and are NOT COMPATIBLE! Some components on these assy's are different. Since these different components are not available as service part, they are not listed.

• PCB PARTS LIST

| Mark | No. | Description | Part No. |
|------|-----|-------------|----------|
|------|-----|-------------|----------|

AF MAIN ASSY (7028077921010)

SEMICONDUCTORS

| | | |
|---|------------|------------------|
| | IC 401-403 | J121458000050-IL |
| | IC 1009 | BD3473KS2-K |
| | IC 1200 | J127410500010-IL |
| | Q 14,15 | J522305200050-IL |
| | Q 16 | J520015301210-IL |
| ⚠ | Q 17 | J5000916Y0050-IL |
| | Q 19,20 | J522305200050-IL |
| ⚠ | D 7 | K047100600220-IL |
| ⚠ | D 9400 | K06606R84P430-IL |
| ⚠ | D 9401 | K06606R84P430-IL |

MISCELLANEOUS

| | | |
|--|----------------------------|------------------|
| | JA 101 TER,BOARD SCREW 4P | G612405E0200Y-IL |
| | JA 102 TER,BOARD PUSH 6P | G596601SA010Y-IL |
| | JA 401 TER,RCA 6PIN | G603610A0001Y-IL |
| | JA 402 TER,RCA 3PIN | G606305AW140Y-IL |
| | JA 403 TER,RCA 1PIN | G600107A0000Y-IL |
| | RY 2 RELAY | G680060103010-IL |
| | RY 3 RELAY | G680060103010-IL |
| | RY 4 RELAY | G680060103010-IL |
| | RY 5 RELAY | G680240202080S |
| | CN 9013,9016,9110 CN,WAFER | L109012511540S |
| | CN 9015 CN,WAFER | L109012511340S |
| | 601 TUNER,FM/AM | E903004100781S |

RESISTORS

| | | |
|--|------------------|------------------|
| | R 5,7,9,11,13,25 | C060010065050-IL |
| | R 6,8,10,12,14 | C060010066050-IL |
| | R 15,16 | C060033166050-IL |
| | R 64 | C060022063050-IL |
| | R 66 | C0604R7065050-IL |
| | R 588,589 | C060010165060-IL |

CAPACITORS

| | | |
|--|---------|------------------|
| | C 55,58 | D040682088010-IL |
|--|---------|------------------|

| Mark | No. | Description | Part No. |
|------|-----|-------------|----------|
|------|-----|-------------|----------|

BF D-MAIN ASSY (7028077971010)

SEMICONDUCTORS

| | | |
|---|--------------|---------------------|
| ⚠ | IC 2 | J122214300010S |
| | IC 1605,1606 | J046205101010S |
| | IC 1808 | TC7WHU04FK-TRB |
| | IC 1812 | TC7SH08FUS1-TLB |
| | IC 2004 | NJM2831F33-TLB |
| | IC 2005,2006 | S-1170B50UC-OUJ-TRB |
| | IC 2008 | MM3529A32P-TRB |
| | IC 2011 | J080458800010-IL |
| | IC 2014 | J040742570040-IL |
| | IC 2018 | J001986466020S |
| | IC 2022 | J040741570110-IL |
| | Q 2026,2040 | J543608000010-IL |

MISCELLANEOUS

| | | |
|--|-----------------------------|----------------|
| | JA 1601,9601-9604 HDMI JACK | AKP7286 -K |
| | X 2002 CRYSTAL (24.576 MHz) | E80024R576890S |
| | X 2003 CRYSTAL (4 MHz) | E80004R000990S |

BF CPU ASSY (7028077931010)

SEMICONDUCTORS

| | | |
|---|--------|------------------|
| | IC 204 | J000241600170-IL |
| ⚠ | IC 301 | J126111733630S |

MISCELLANEOUS

| | | |
|--|------------------------|----------------|
| | CN 201 CN,WAFER | L109012513340S |
| | CN 203 CN,WAFER | L109012511140S |
| | CN 210 CN,WAFER | L109012511340S |
| | X 201 CRYSTAL (16 MHz) | E80016R000890S |

CAPACITORS

| | | |
|--|--------|------------------|
| | C 3042 | D040102081060-IL |
|--|--------|------------------|

MF NTC ASSY (7028077924010)

MISCELLANEOUS

| | | |
|--|---------------------|----------------|
| | TH 80,81 THERMISTOR | F340160801030S |
|--|---------------------|----------------|

NF BT ASSY (7028077941010)

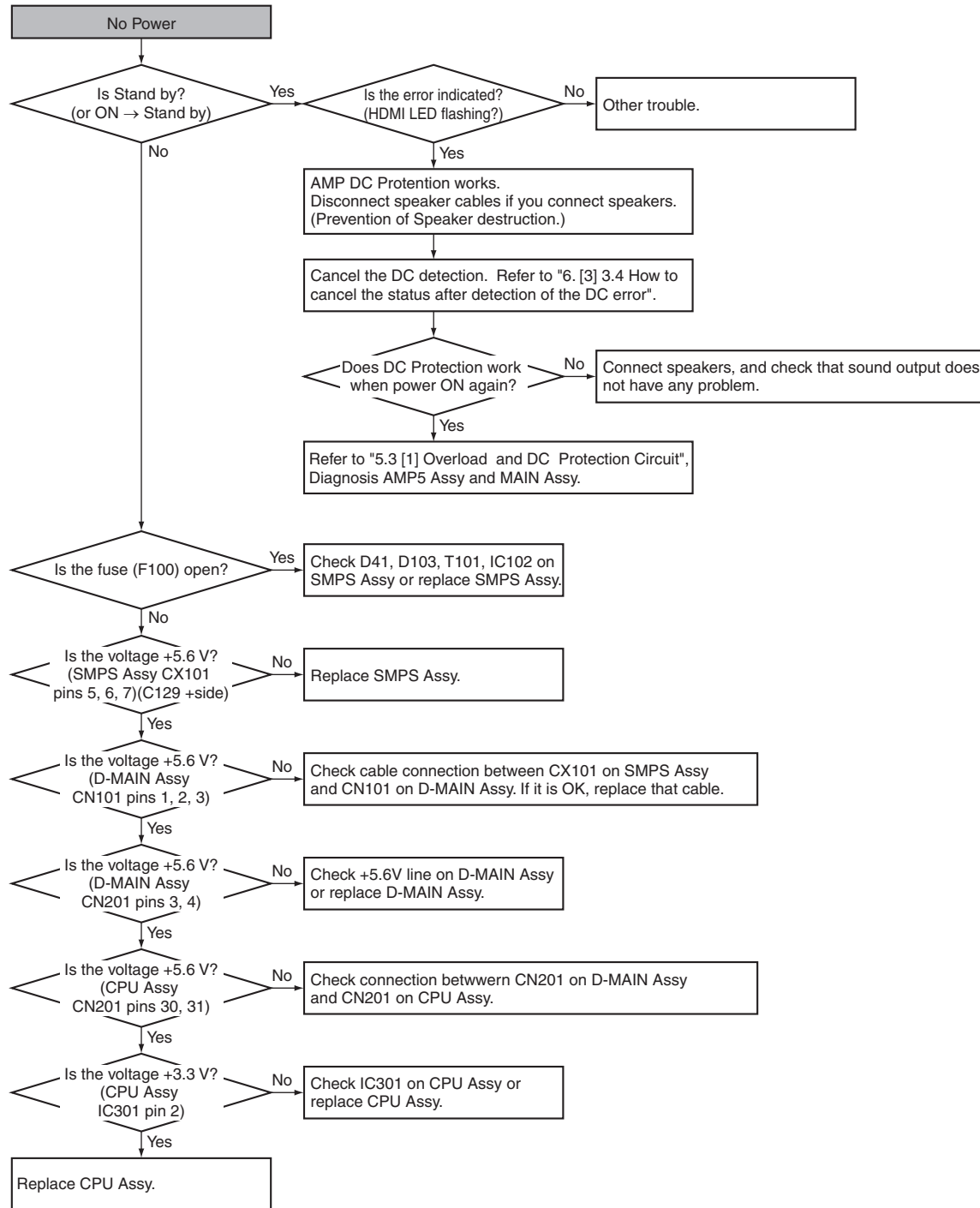
There is no service parts.

3. DIAGNOSIS

3.1 TROUBLESHOOTING

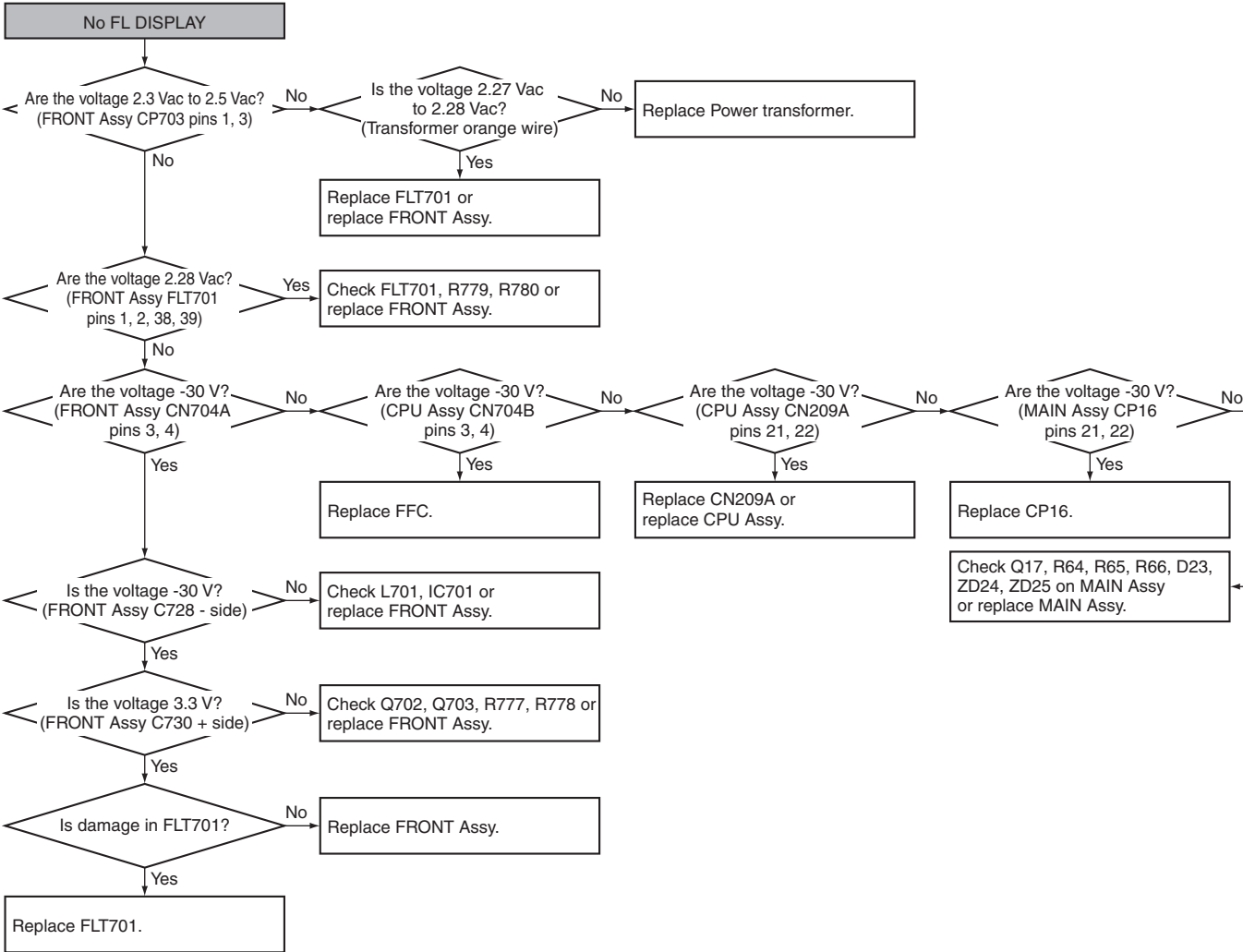
No Power

This is just for general reference and does not including every single case.



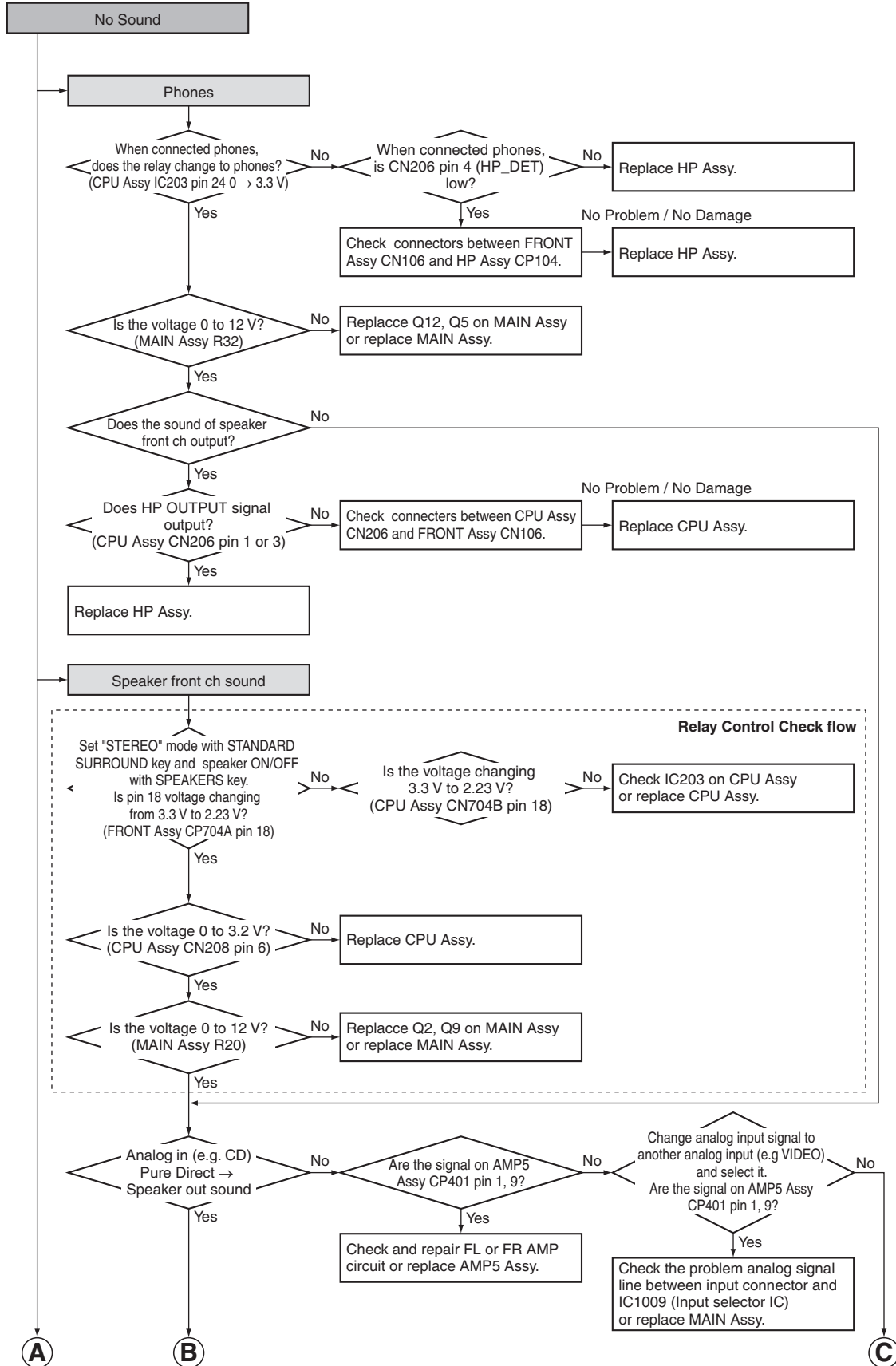
No FL DISPLAY

This is just for general reference and does not including every single case.

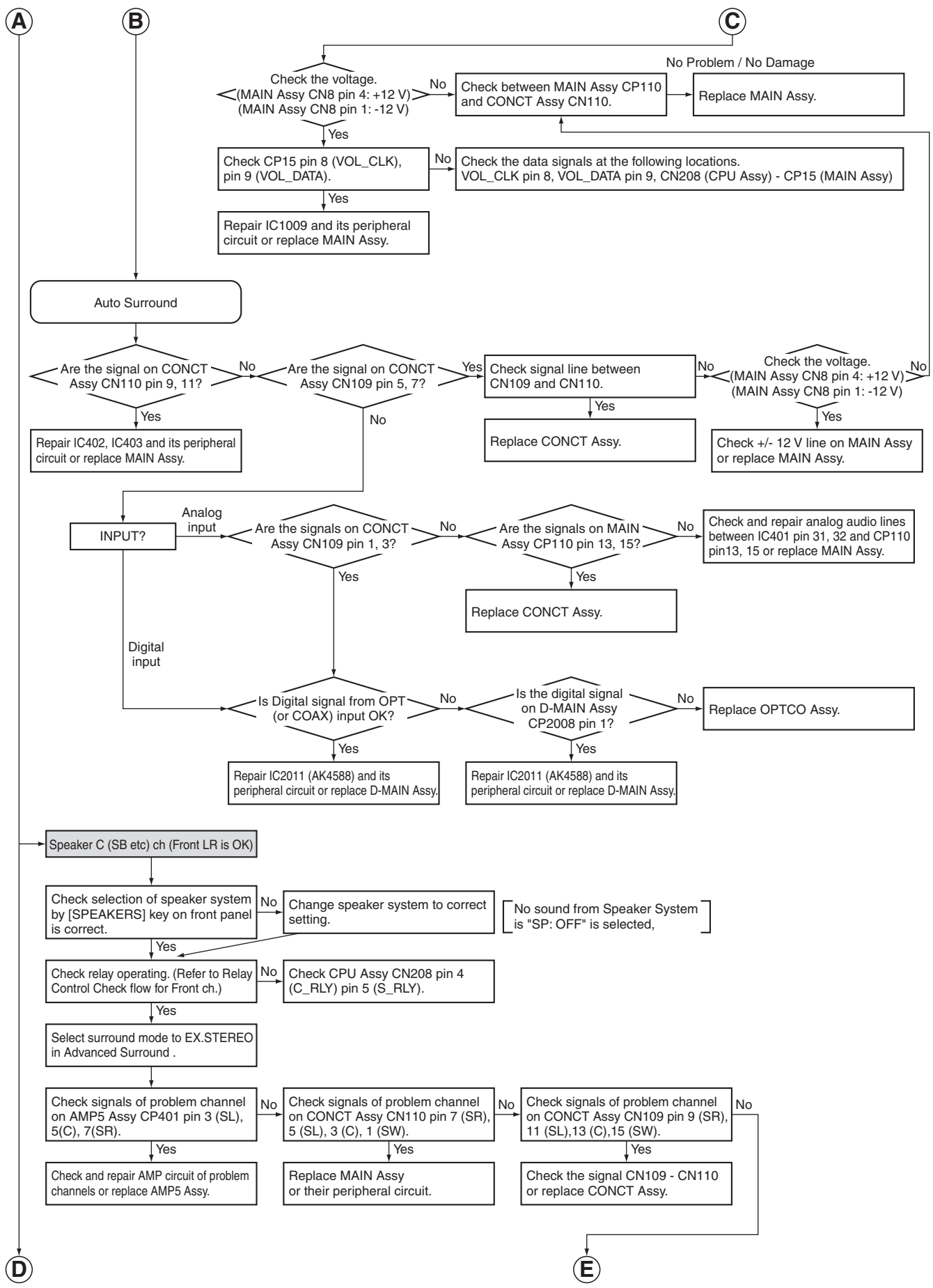


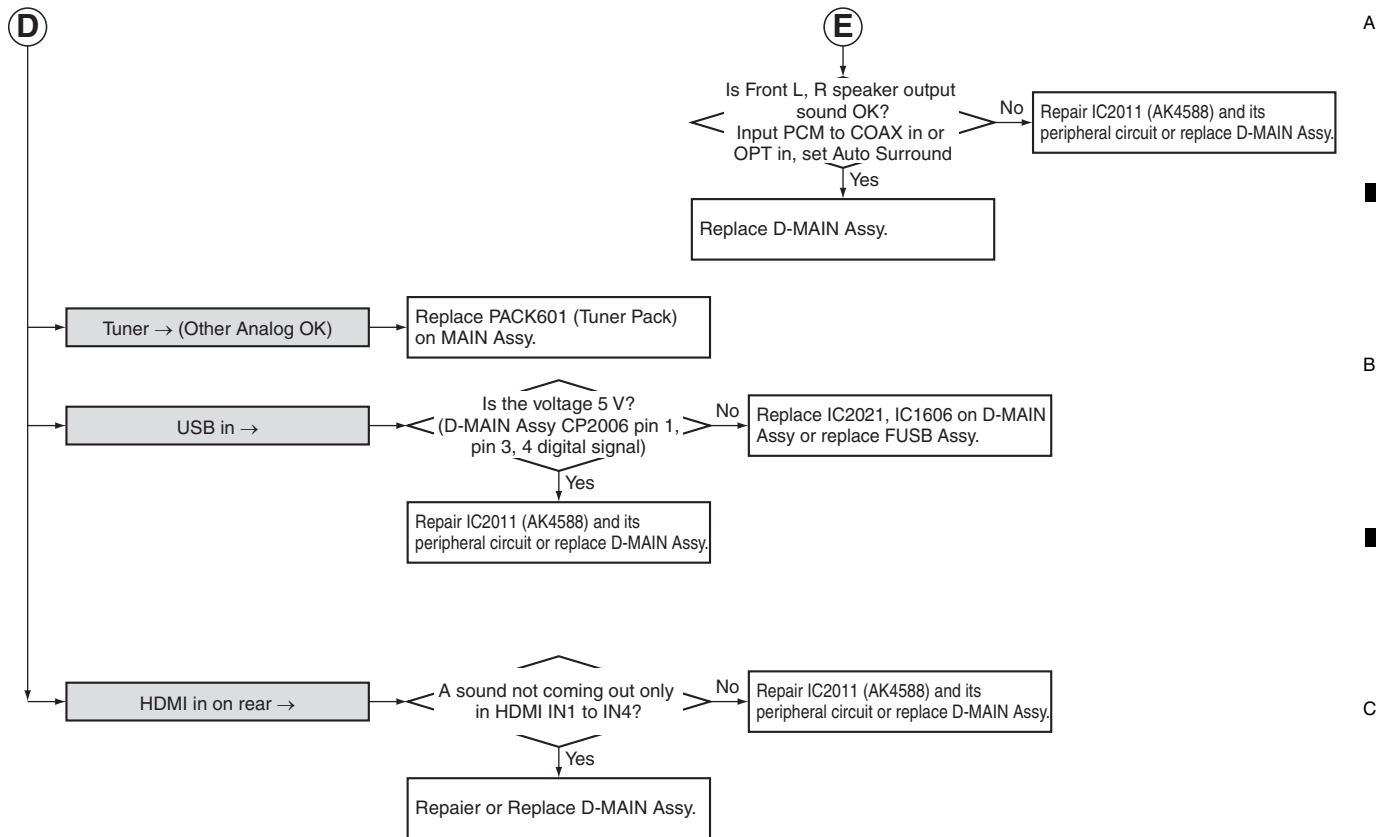
No Sound

This is just for general reference and does not including every single case.



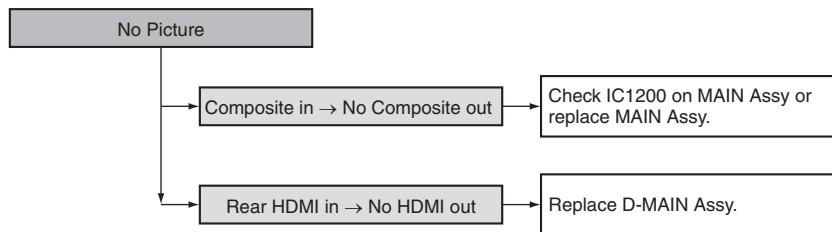
A
B
C
D
E
F





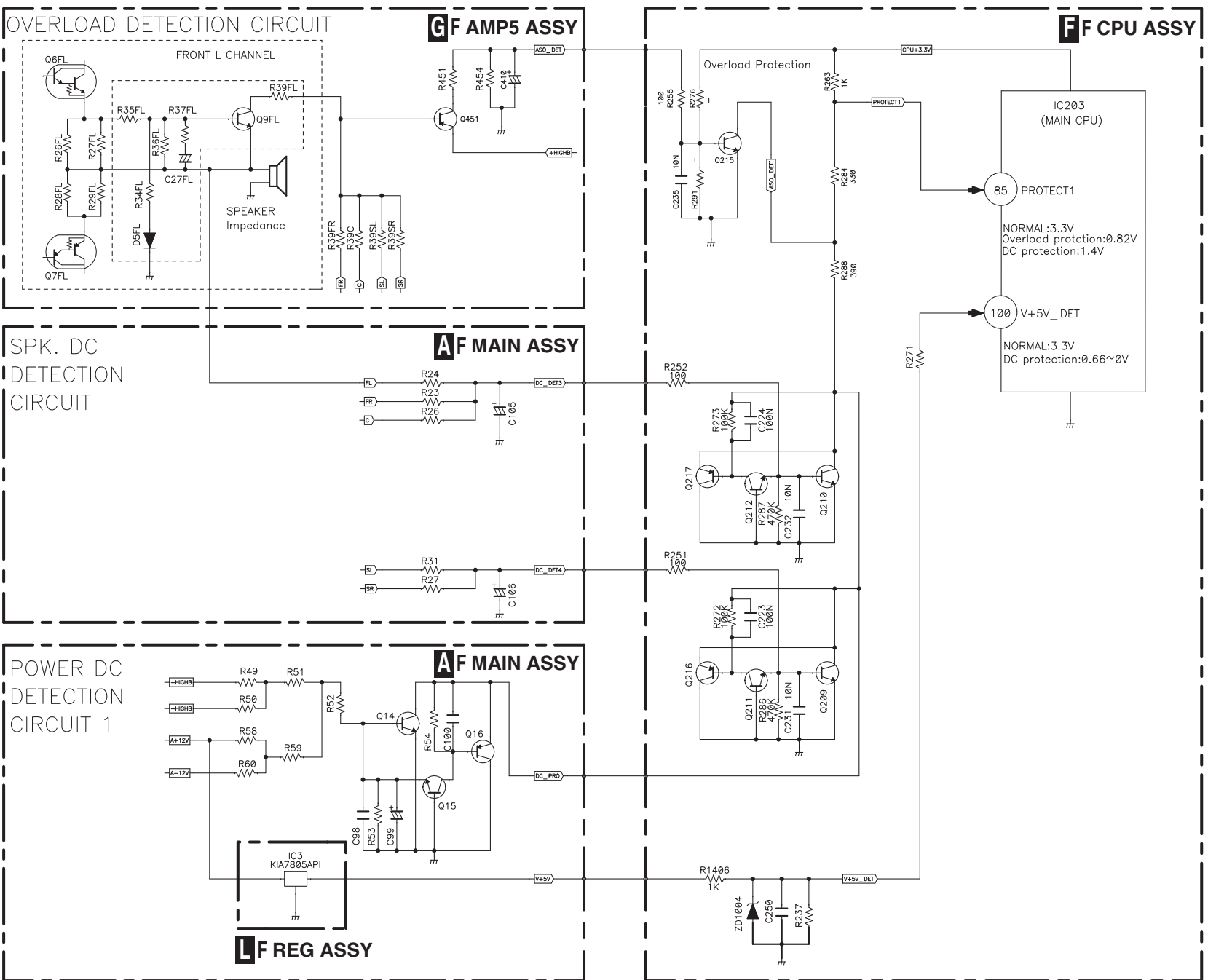
No Picture

This is just for general reference and does not including every single case.

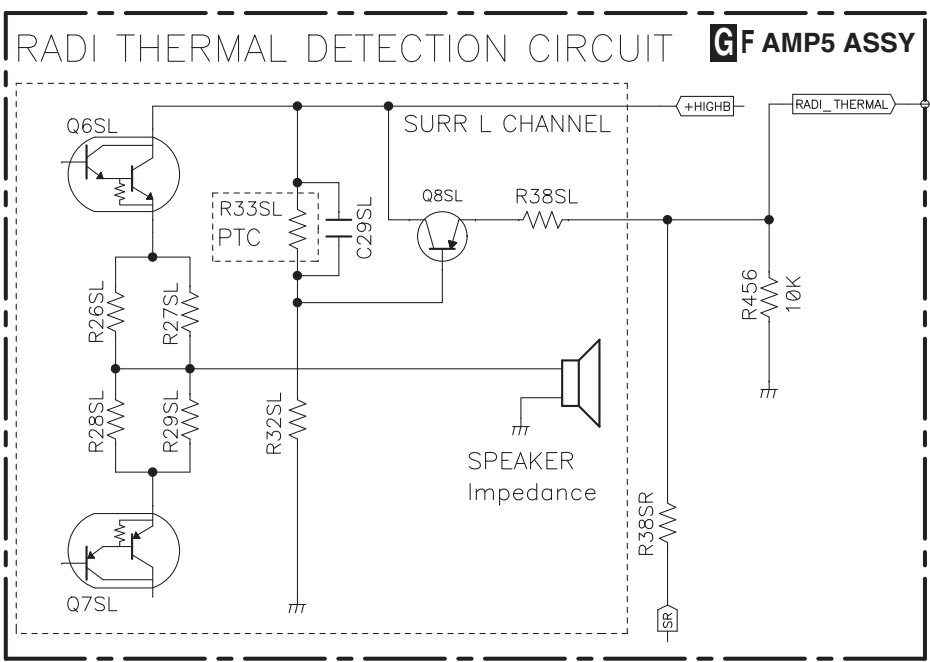
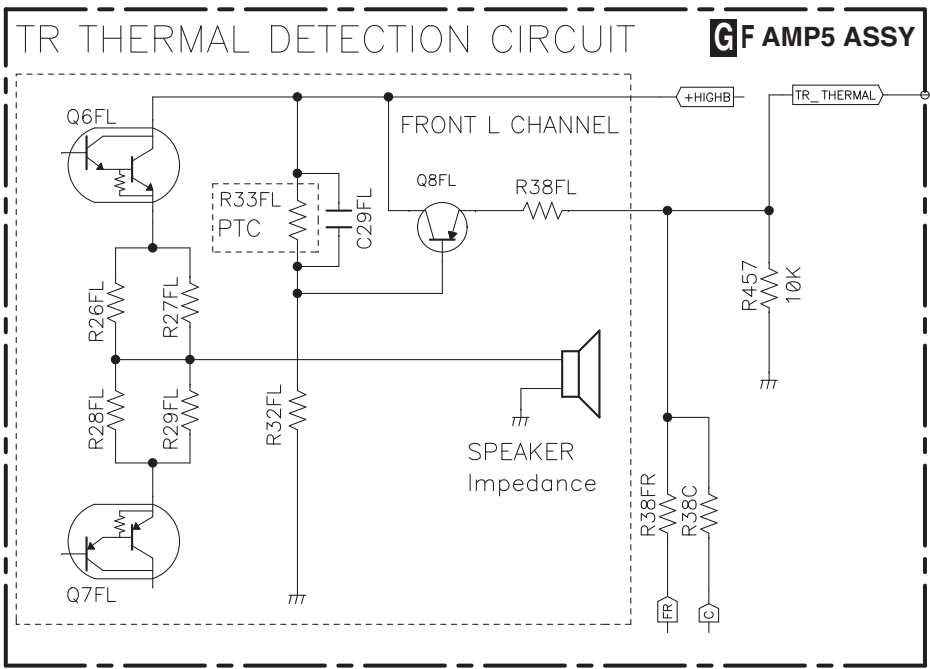
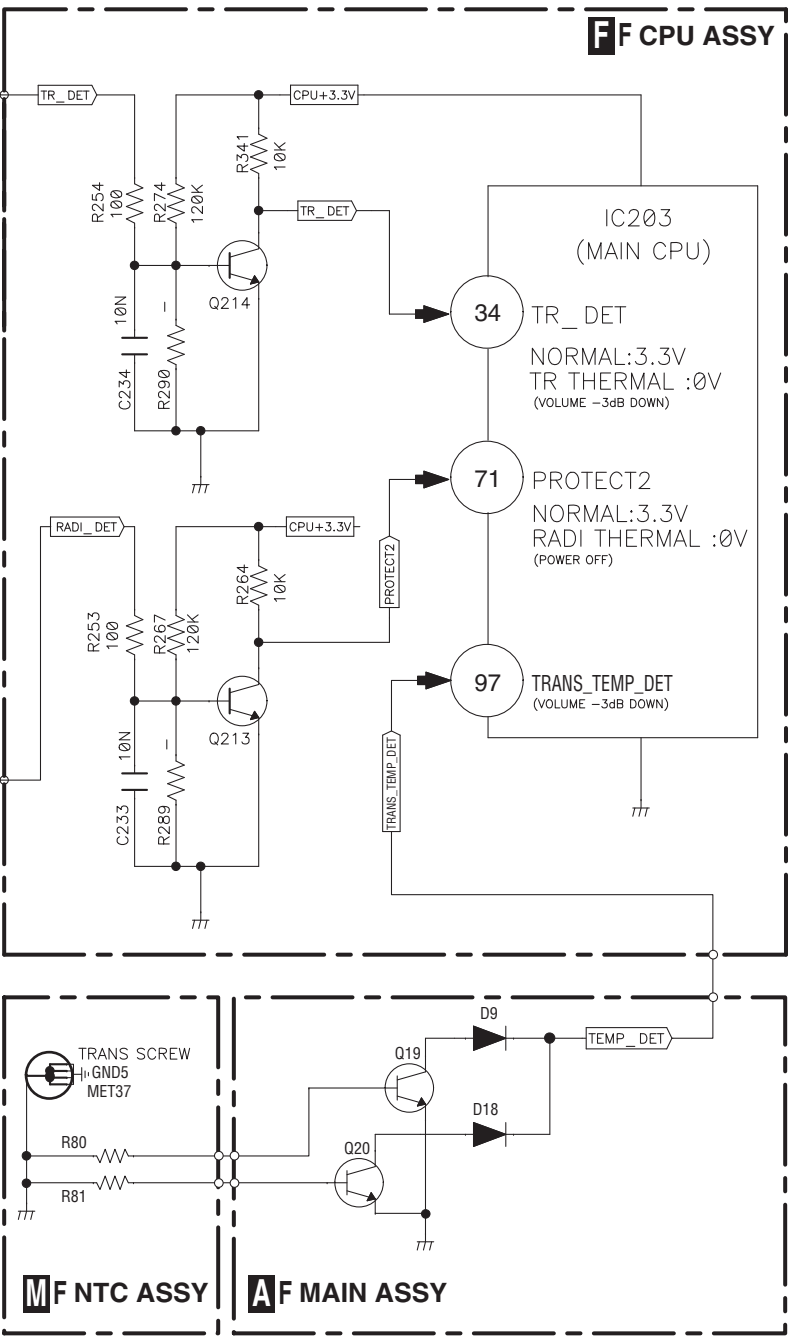


3.2 PROTECTION CIRCUIT

[1] Overload and DC Protection Circuit



[2] TEMP Protection Circuit



VSX-530-K

5, 6, 7, 8, 15

F, E, D, C, B, A

3.3 PAIRING WITH THE UNIT (INITIAL REGISTRATION)

- A In order for the unit to playback music stored on a Bluetooth capable device, pairing must first be performed. Pairing should be performed when first using the unit with the Bluetooth capable device, or when the pairing data on the device has been erased for any reason.

Pairing is a step required to allow communication using Bluetooth wireless technology to be carried out.

- Pairing is only performed the first time that you use the unit and the Bluetooth capable device together.
- In order to allow communication using Bluetooth wireless technology to take place, pairing must be performed on both the unit and the Bluetooth capable device.
- After pressing the **BT** and switching to **BT Audio** function, perform the pairing procedure on the Bluetooth capable device.

If pairing has been performed correctly, you will not need to perform the pairing procedures for the unit as shown below.

Please refer to the user's manual for your Bluetooth capable device for more details.

1 Press the  RECEIVER and turn the power to the unit on.

- B **2 Press the BT.**

3 Turn on the power to the Bluetooth capable device that you wish to pair with, and perform pairing procedure on it.

Note

- This unit will be displayed as "Pioneer AVR" on all Bluetooth capable devices that you have.

Pairing will start.

- Place the Bluetooth capable device close to the unit.
- Please refer to the user's manual for your Bluetooth capable device for details on when pairing can be performed and the procedures required for pairing.
- When PIN code entry is requested, enter "0000." (This unit does not accept any PIN code setting other than "0000.")

4 Confirm on the Bluetooth capable device that pairing has been completed.

- C If pairing with the Bluetooth capable device has been completed correctly "CONNECT" will be displayed.

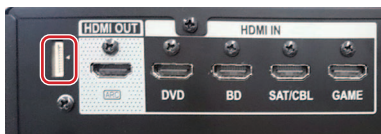
4. EACH SETTING AND ADJUSTMENT

4.1 UPDATING OF THE FIRMWARE (IC3: SUB MICROCOMPUTER)

- The updating jig (GGF1642) in this Section is the same as that used for updating of the MAIN microcomputer of the base model (VSX-523-K/CUXESM).
- The software for updating to be used on a PC is "FLASH MCU Programmer for FM0+/FM3/FM4."
Please download it from Service Website.
- The updating procedure for MAIN microcomputer is same as the base model (VSX-523-K/CUXESM).
Please refer to the Service Manual (RRV4418) for VSX-523 regarding it.

[Preparations]

1. Install the software for updating on the PC.
2. Unplug the power cord of the main unit.
Connect the FFC of the updating jig for updating to the main unit.
(Orient the FFC so that the conductive surface of the connector faces the triangular ▲ symbol.)



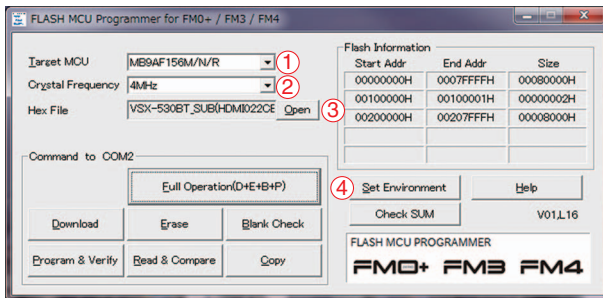
Rear side

3. Start the software for updating on the PC.

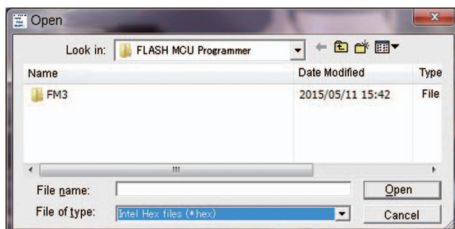
[Procedures]

To perform updating, proceed as follows:

1. Set the values for Target MCU and Crystal Frequency, as follows:
Target MCU: MB9AF156M/N/R ①
Crystal Frequency: 4MHz ②



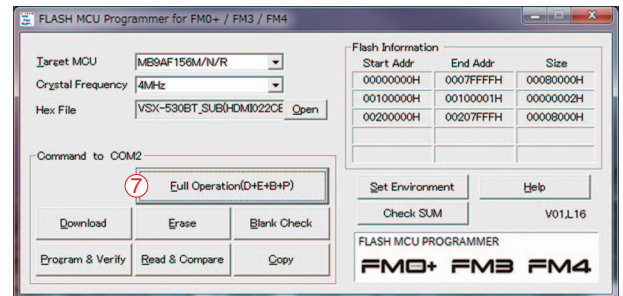
2. Specify the software file to be updated.
Click on "Open" ③ to open the File Selection window.
Select Intel Hex files (*.hex) in File Type.



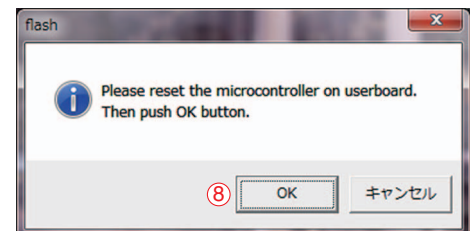
3. Specify the COM PORT.
Click on "Set Environment" ④ to open the Environment Setting window.
Assign the COM PORT number ⑤, according to the environment.
Click on "OK" ⑥ to close the Environment Setting window.



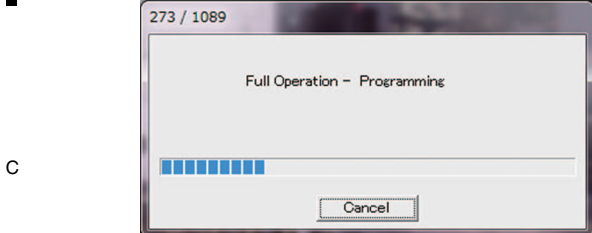
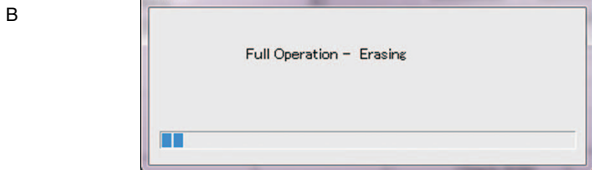
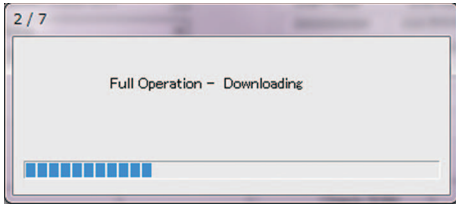
4. Click on "Full Operation (D+E+B+P)" ⑦.



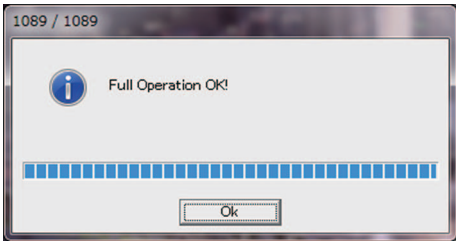
5. After the window shown below is displayed, turn the main unit on.
6. Press the Reset button of the updating jig for updating.
7. Click on "OK" ⑧.



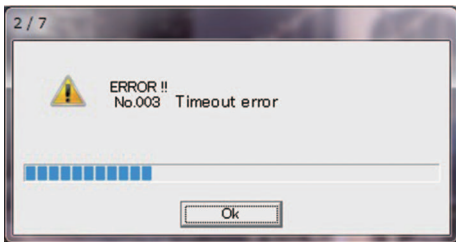
A 8. The indications in the window change, as indicated below:



9. Updating has been successfully completed if "Full Operation OK!" is displayed.



Note:
 If an error message like the one shown below is displayed, after checking the connection of the updating jig for updating and the COM PORT setting, start updating again from Step 1.



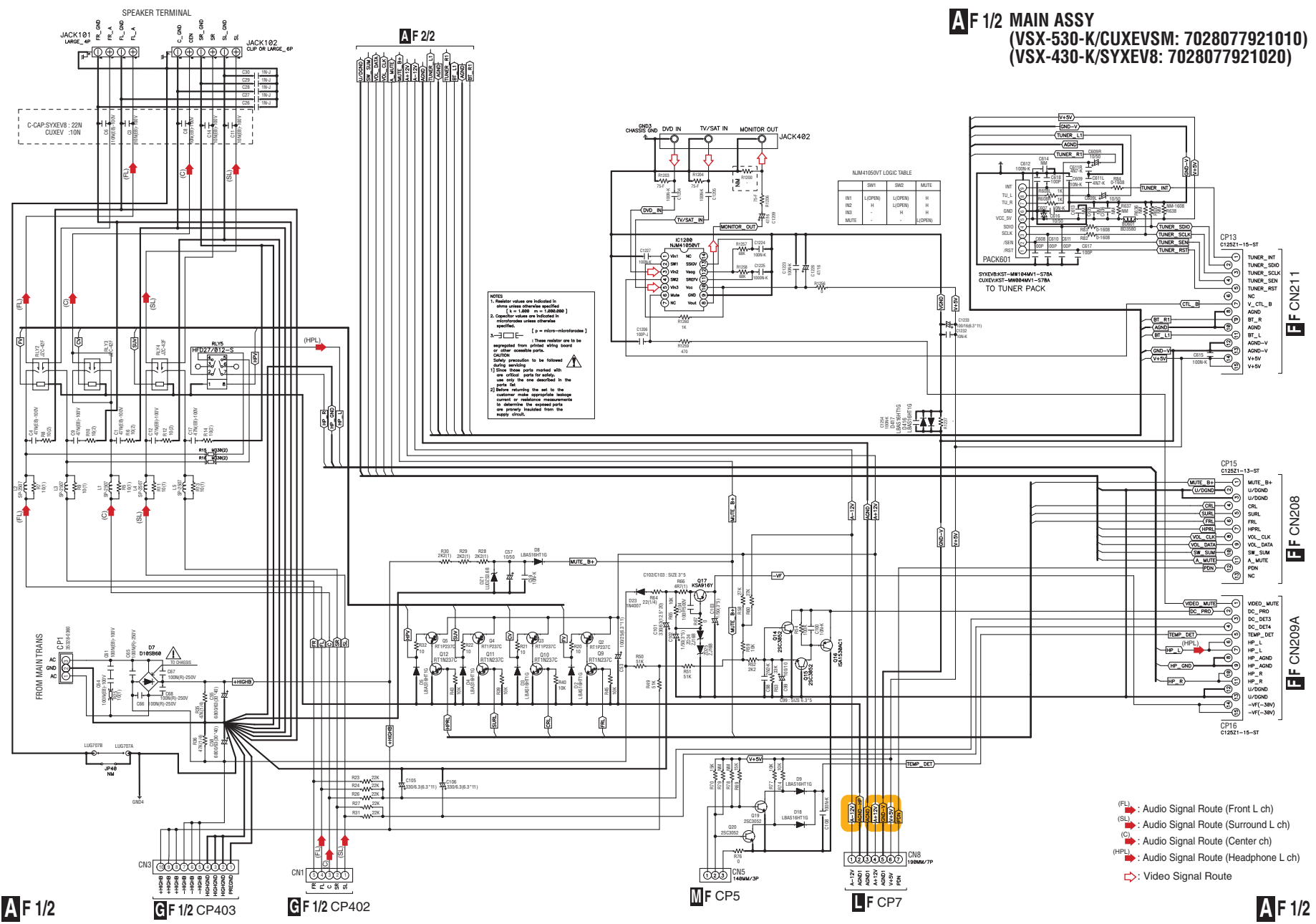
10. Turn the main unit off then disconnect the updating jig for updating.

11. Perform Factory Reset on the main unit.

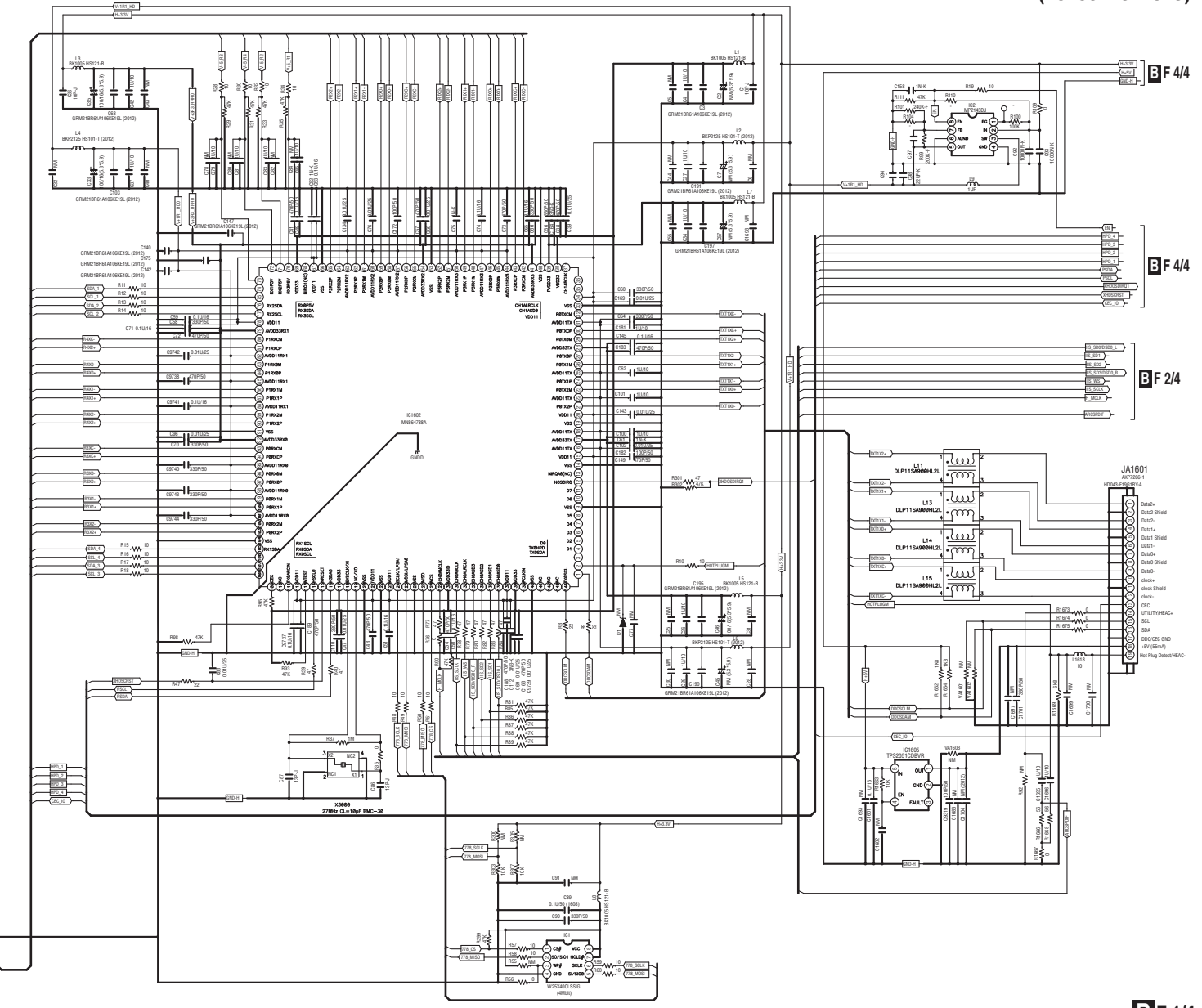
5. SCHEMATIC DIAGRAM

5.1 MAIN ASSY (1/2)

VSX-530-K



BF 1/4 D-MAIN ASSY (7028077971010)

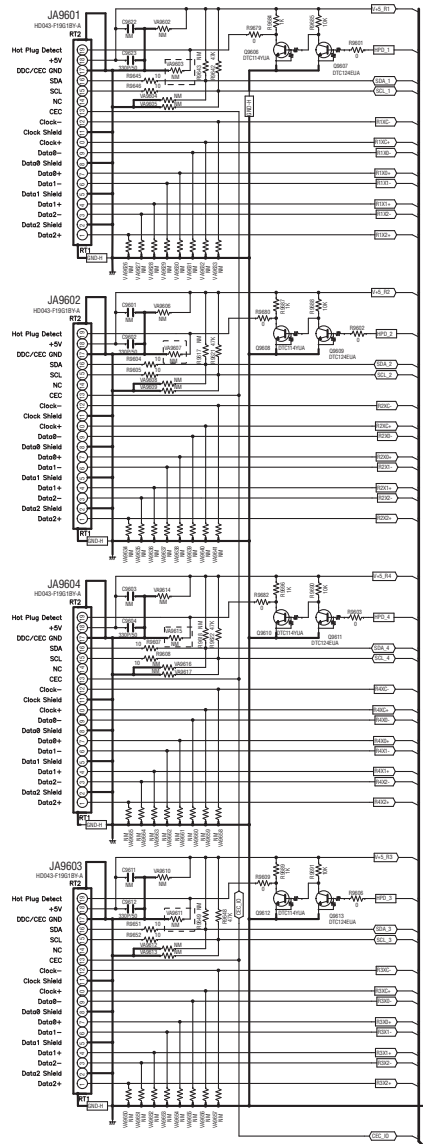


BF 4/4

BF 4/4

BF 2/4

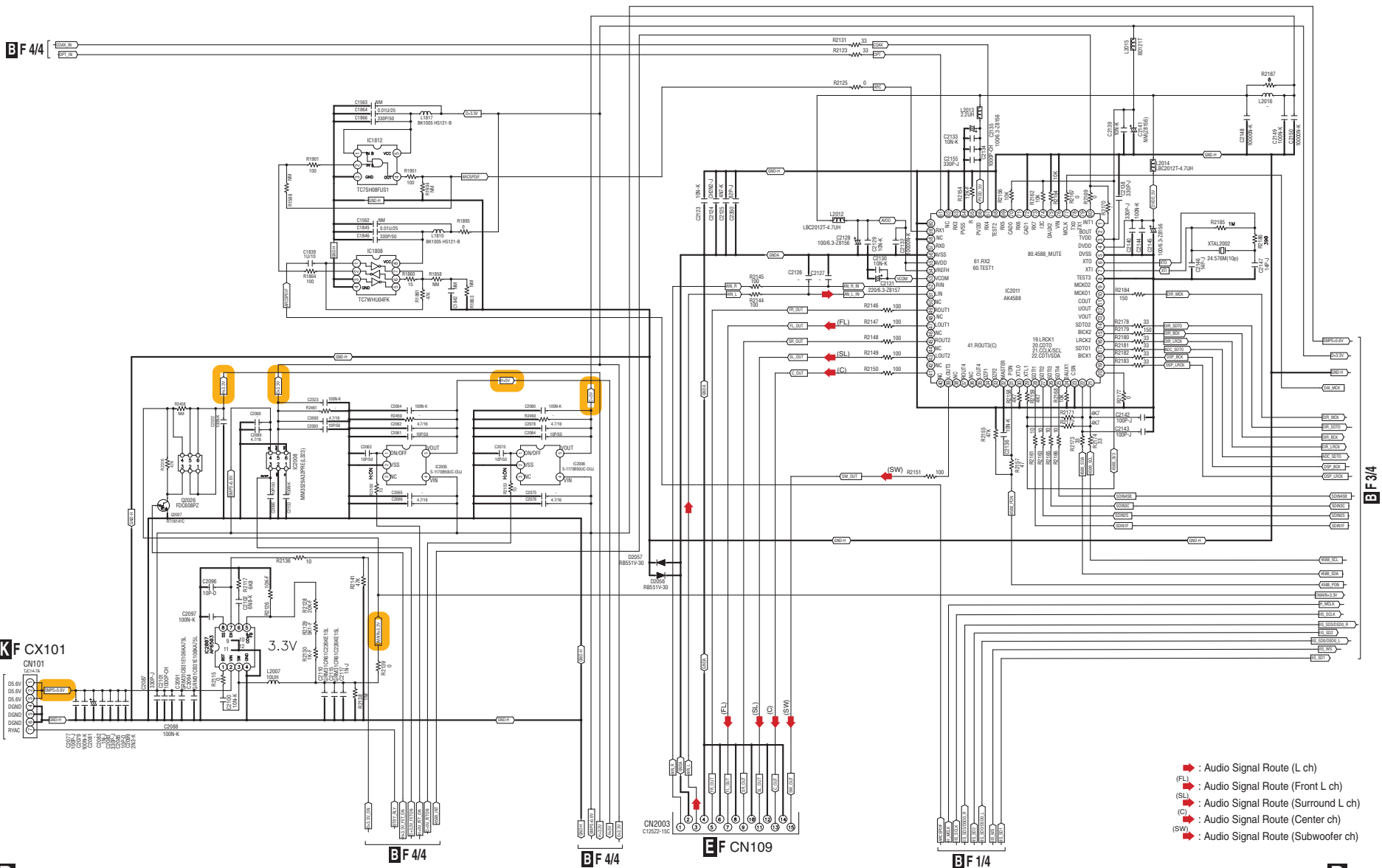
BF 1/4



VSX-530-K

5.4 D-MAIN ASSY (2/4)

BF 2/4 D-MAIN ASSY (7028077971010)



- ◆ : Audio Signal Route (L ch)
- (FL) ◆ : Audio Signal Route (Front L ch)
- (SL) ◆ : Audio Signal Route (Surround L ch)
- (C) ◆ : Audio Signal Route (Center ch)
- (SW) ◆ : Audio Signal Route (Subwoofer ch)

BF 2/4

BF 1/4

EF CN109

BF 4/4

BF 4/4

KF CX101

BF 4/4

VSX-530-K

A

B

C

D

E

F

1

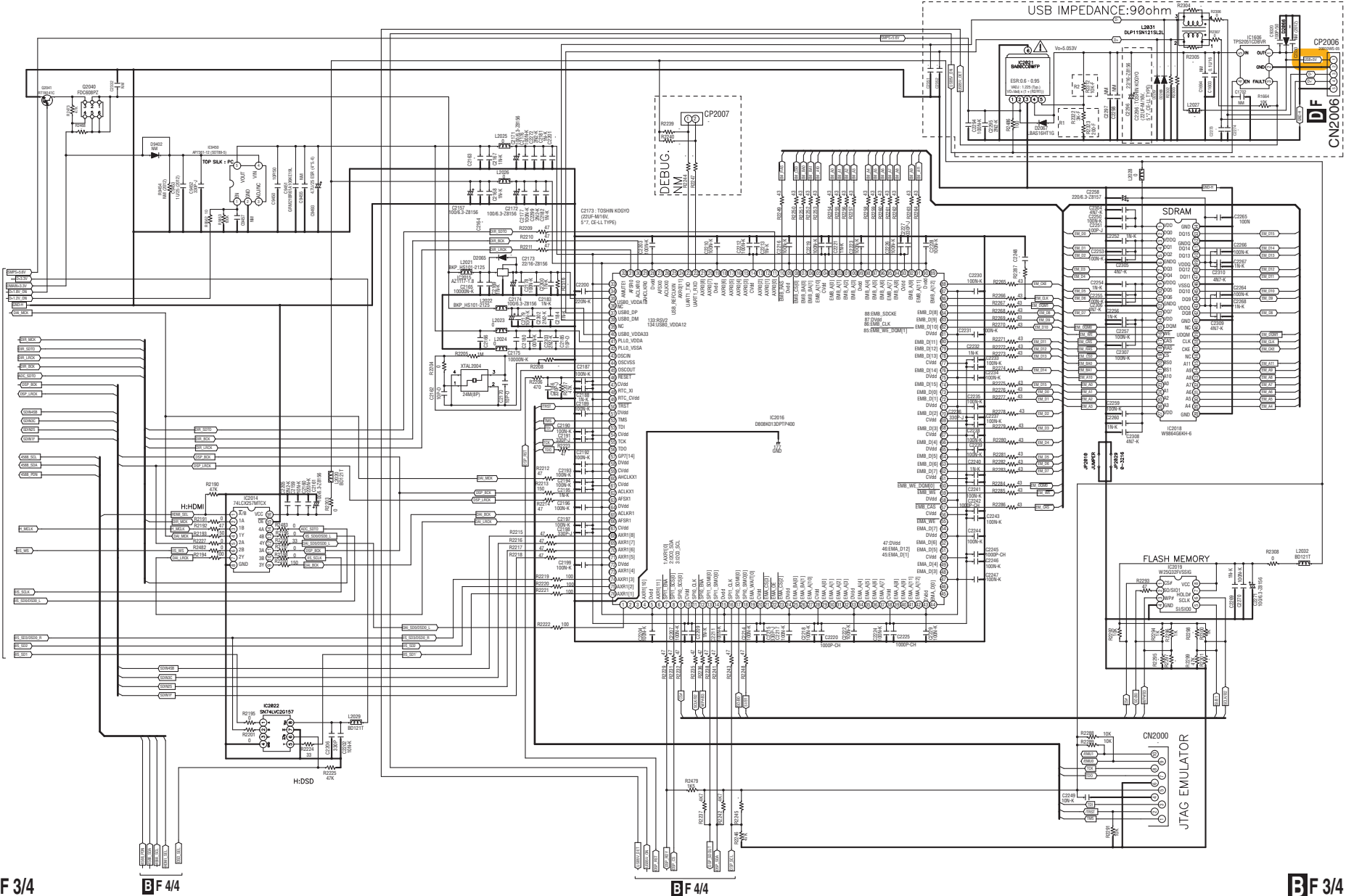
2

3

4

BF 3/4 D-MAIN ASSY (7028077971010)

The Δ mark found on some component parts indicates the importance of the safety factor of the part. Therefore, when replacing, be sure to use parts of identical designation.



VSX-530-K

BF 2/4

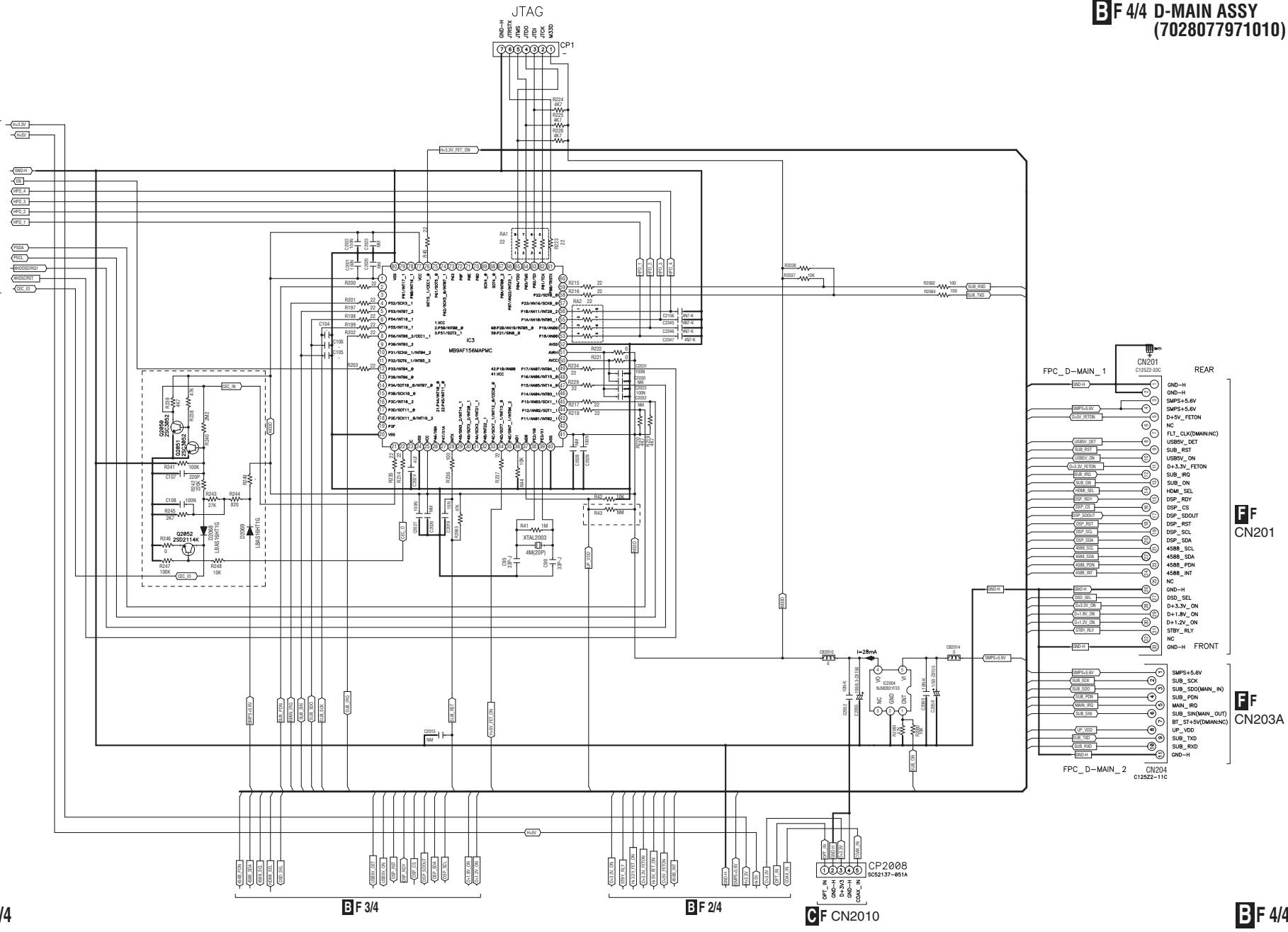
BF 4/4

BF 4/4

BF 3/4

23

BF 4/4 D-MAIN ASSY (7028077971010)



FF CN201

FF CN203A

CF CN2010

BF 2/4

BF 3/4

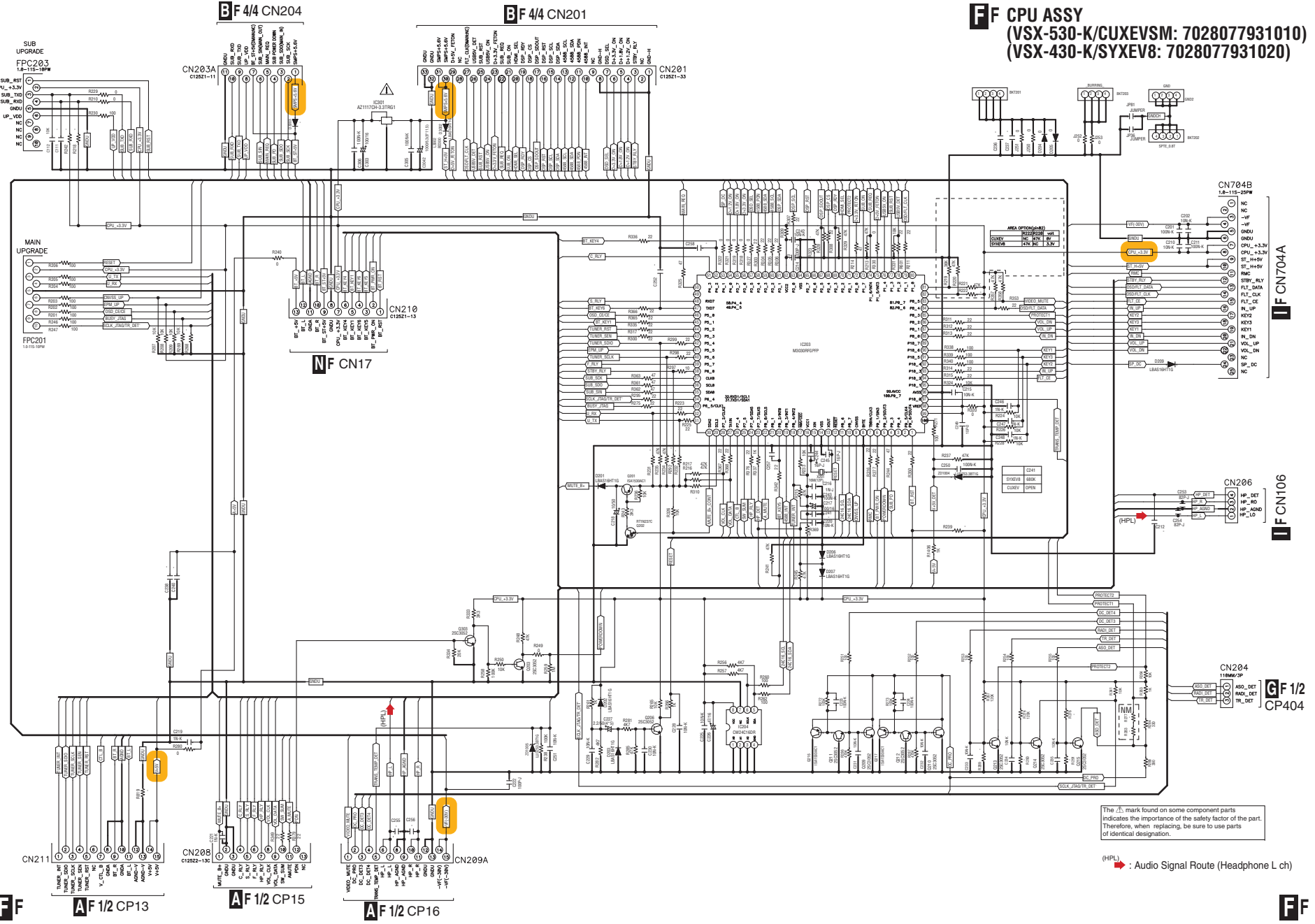
BF 4/4

VSX-530-K

BF 1/4

5.7 CPU ASSY

F CPU ASSY
(VSX-530-K/CUXEVM: 7028077931010)
(VSX-430-K/SYXE8: 7028077931020)



The \triangle mark found on some component parts indicates the importance of the safety factor of the part. Therefore, when replacing, be sure to use parts of identical designation.

(HPL) \rightarrow Audio Signal Route (Headphone L ch)

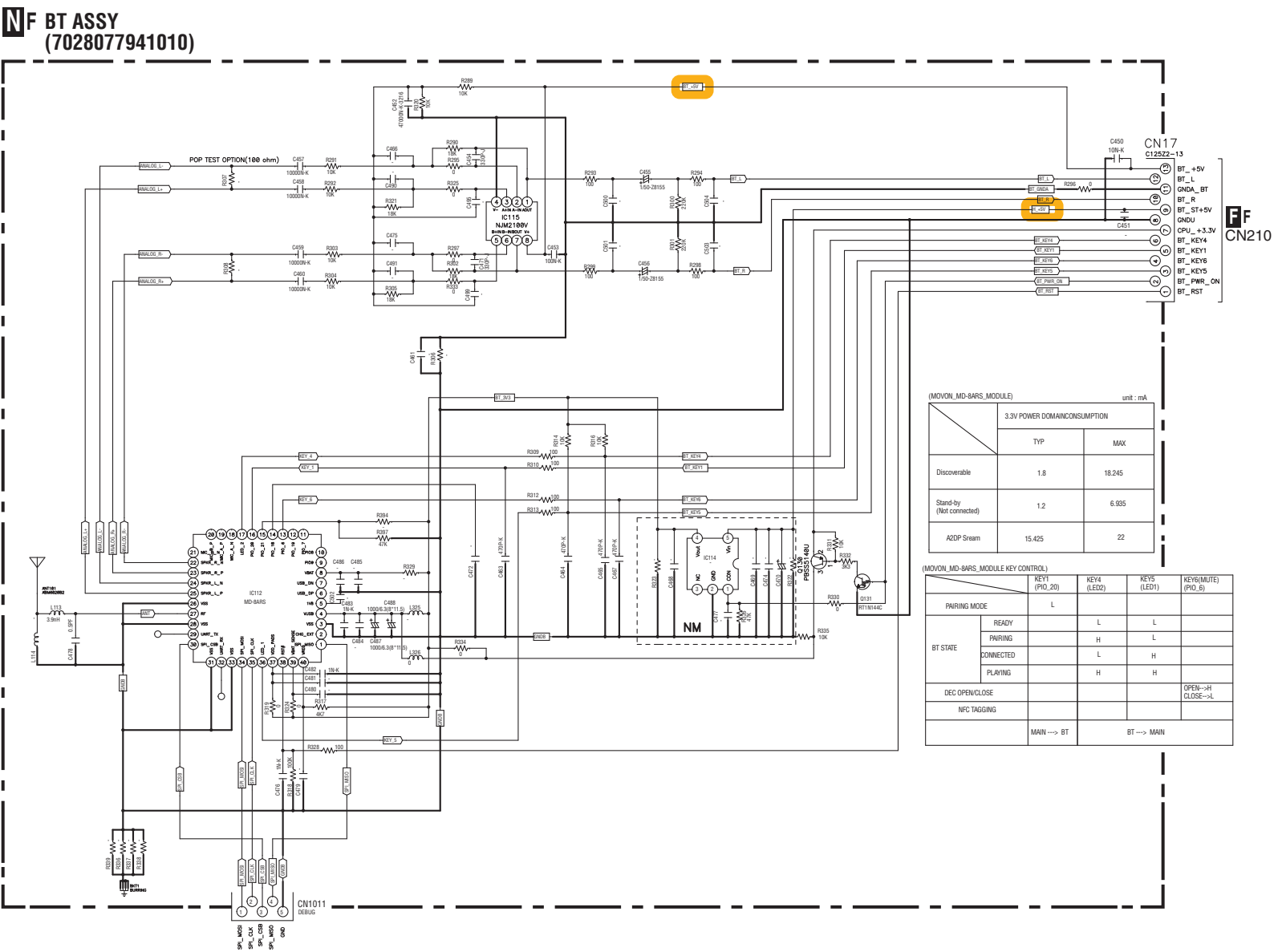
VSX-530-K

F

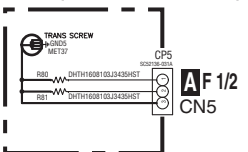
5
6
7
8
25

5
6
7
8

5.8 NTC and BT ASSYS



MF NTC ASSY (7028077924010)

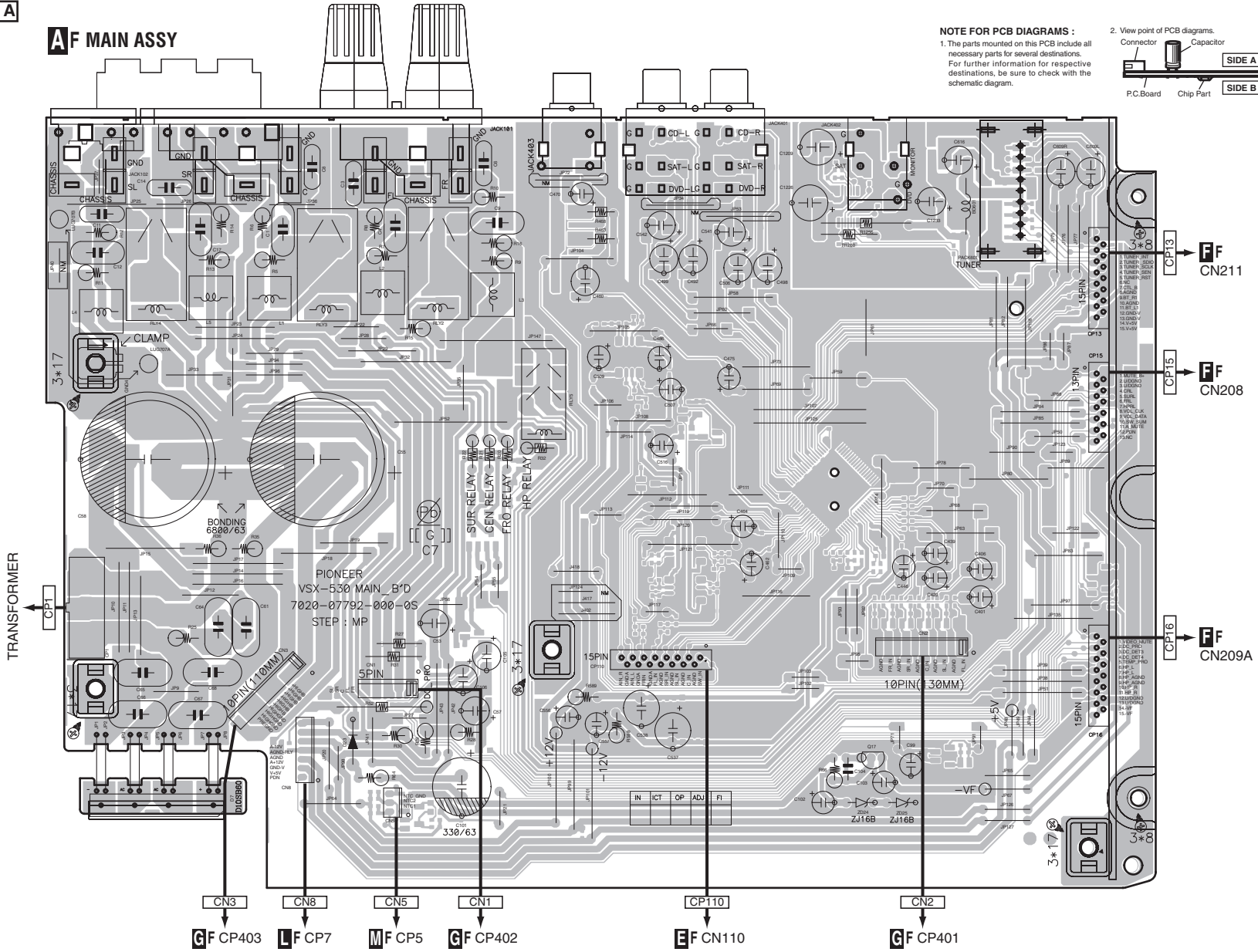


VSX-530-K

6. PCB CONNECTION DIAGRAM

SIDE A

A F MAIN ASSY



SIDE A

6.1 PCB CONNECTION DIAGRAM

6.1 MAIN ASSY

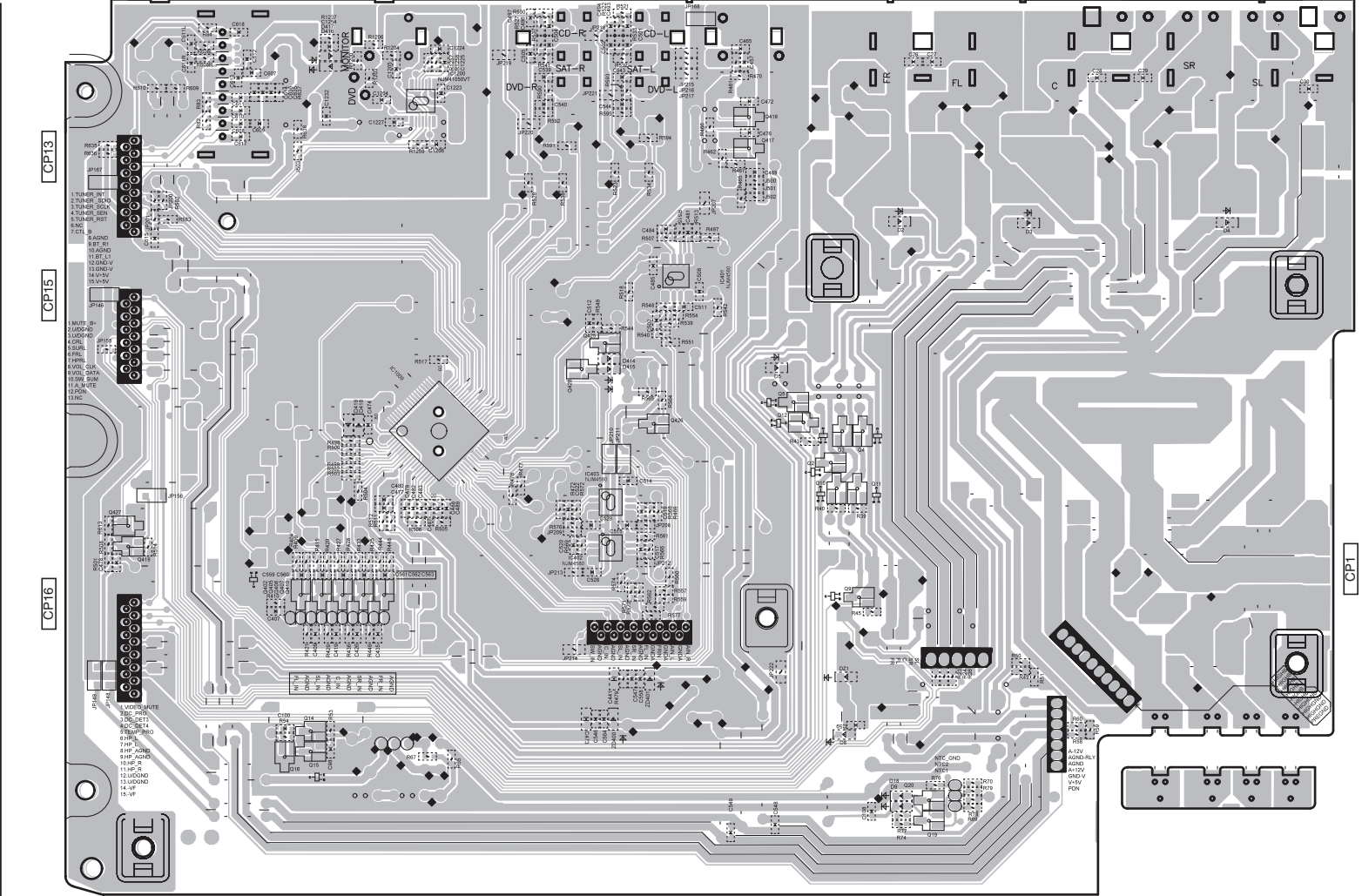
Q17

A F

VSX-530-K

27

AF MAIN ASSY



F
E
D
C
B
A

1
2
3
4

IC1200
Q416
Q417
IC401
Q425
Q428
Q5
Q12
Q3
Q4
Q2
Q10
Q11
IC403
Q427
IC419
IC402
Q402 Q405-Q407
Q410
Q9
Q14
Q16
Q15
Q20
Q19

CP13
CP15
CP16

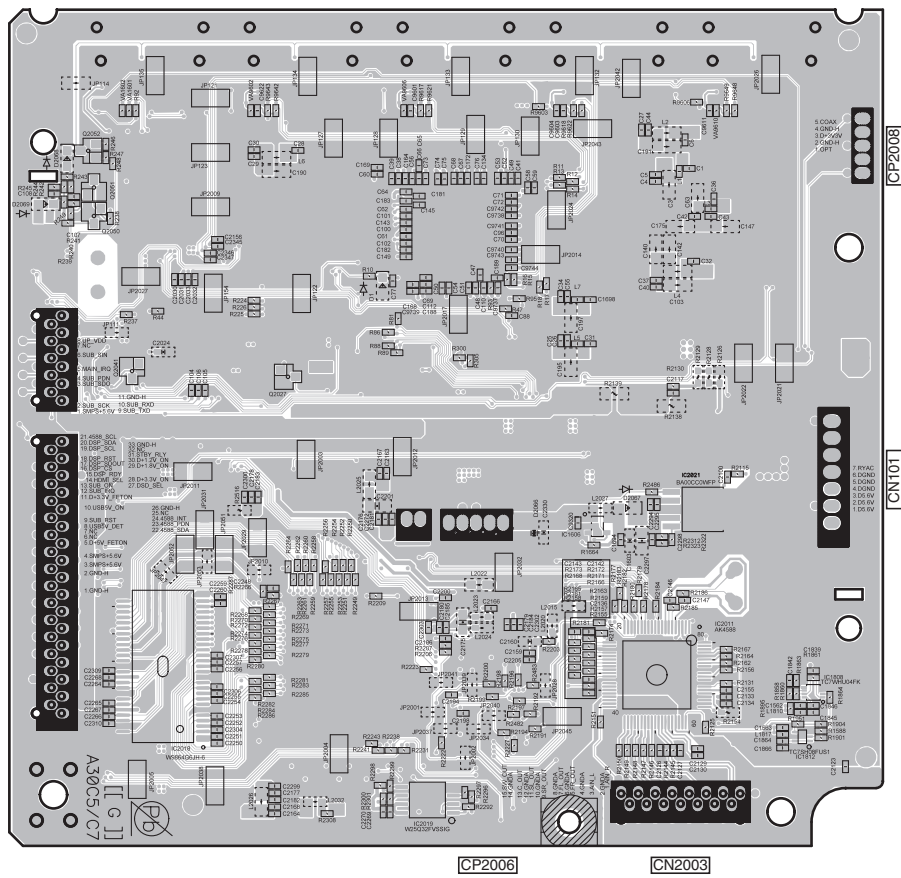
V SX-530-K

CN2
CP110
CN1
CN5
CN8
CN3

CPT1

SIDE B

BF D-MAIN ASSY

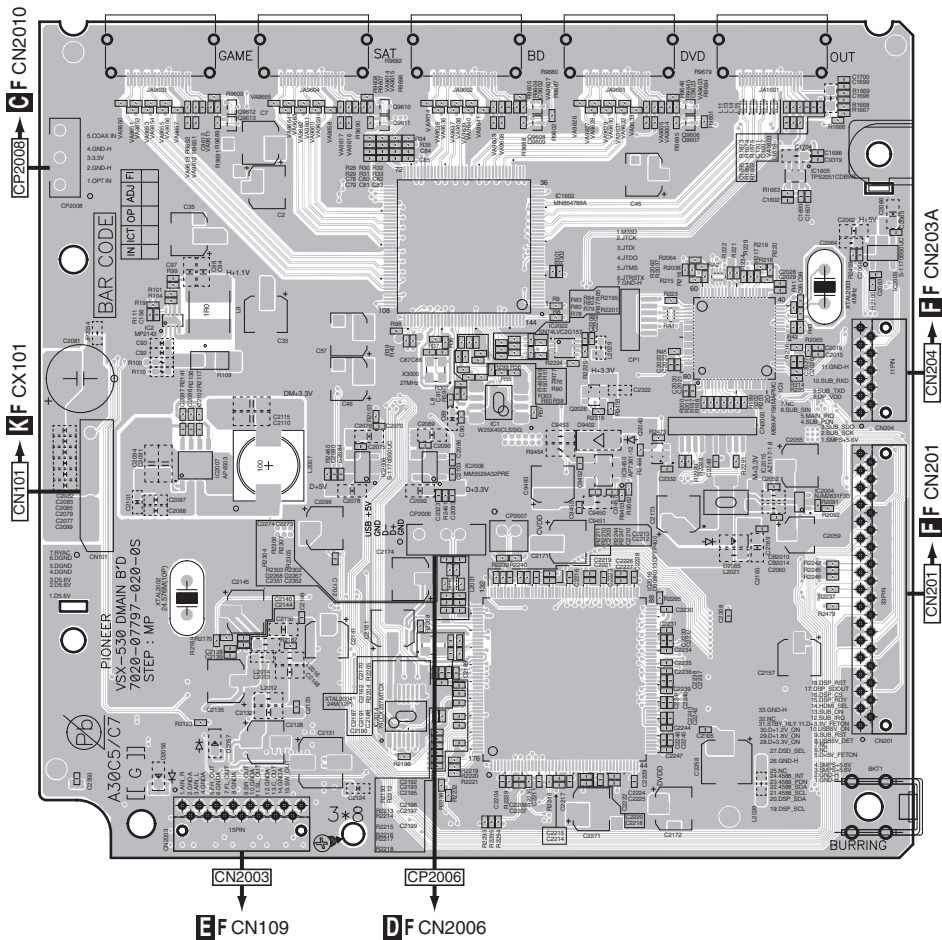


| | | | | | | |
|-------|--------|-------|--------|--------|--------|--------|
| Q2052 | Q2041 | Q2027 | IC2019 | IC1606 | IC2021 | IC1808 |
| Q2051 | IC2018 | | | IC2011 | IC1812 | |
| Q2050 | | | | | | |

BF

SIDE A

BF D-MAIN ASSY

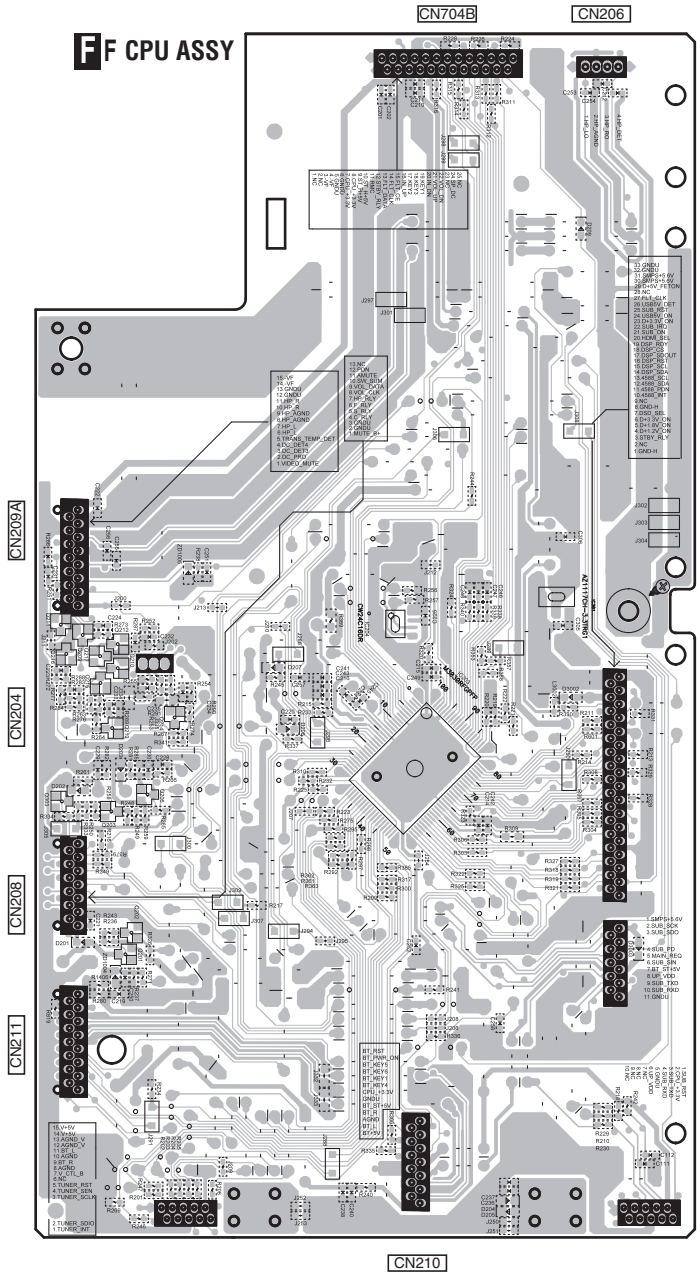


| | | | | | | | |
|-------|-------|--------|--------|--------|-------|--------|--------|
| IC2 | Q9612 | Q9610 | IC1602 | Q9608 | Q9606 | IC1605 | IC2005 |
| Q9613 | Q9611 | IC2006 | IC2008 | IC1 | Q9607 | IC3 | IC2004 |
| | | | | IC2022 | | IC2015 | |
| | | | | IC2016 | Q2026 | | |

BF

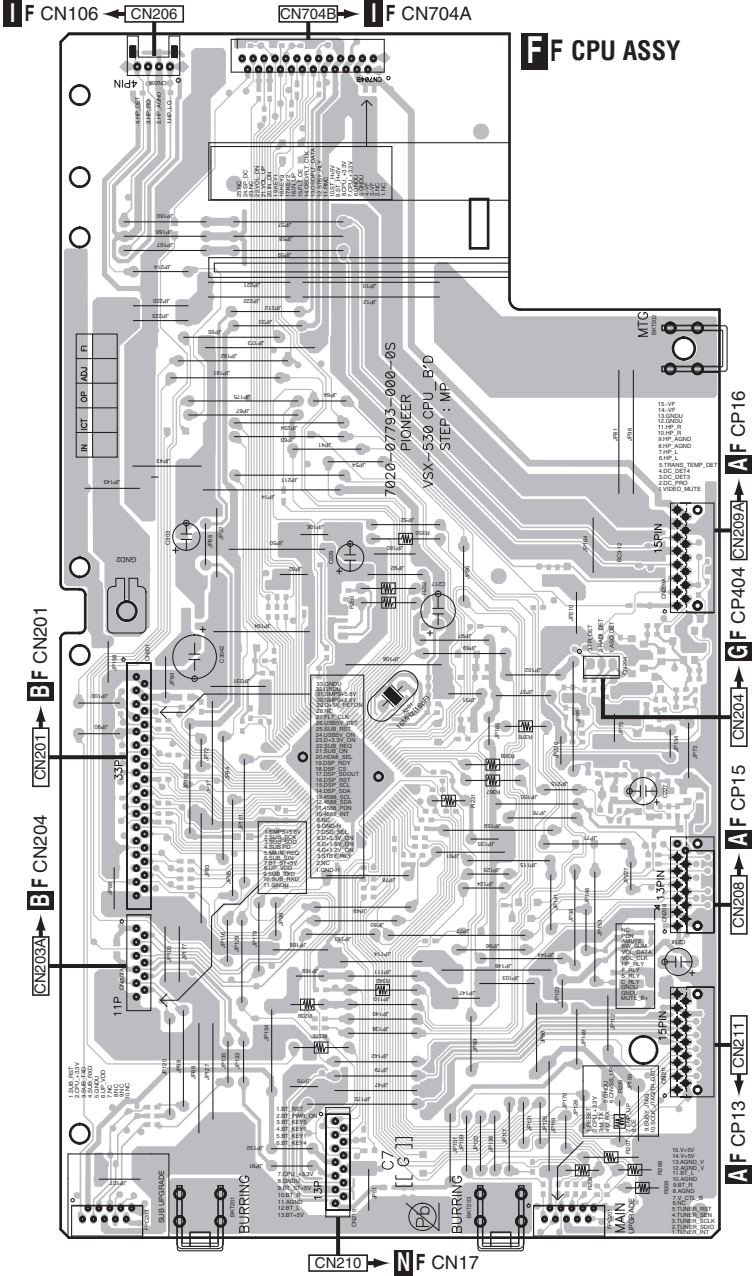
6.3 CPU ASSY

SIDE B



F

SIDE A



F

VSX-530-K

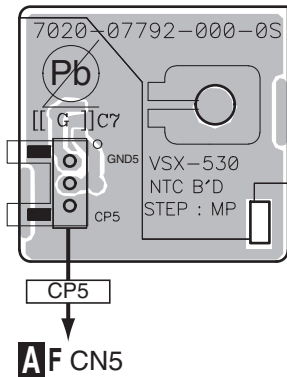
30 1 2 3 4

A B C D E F

6.4 NTC and BT ASSYS

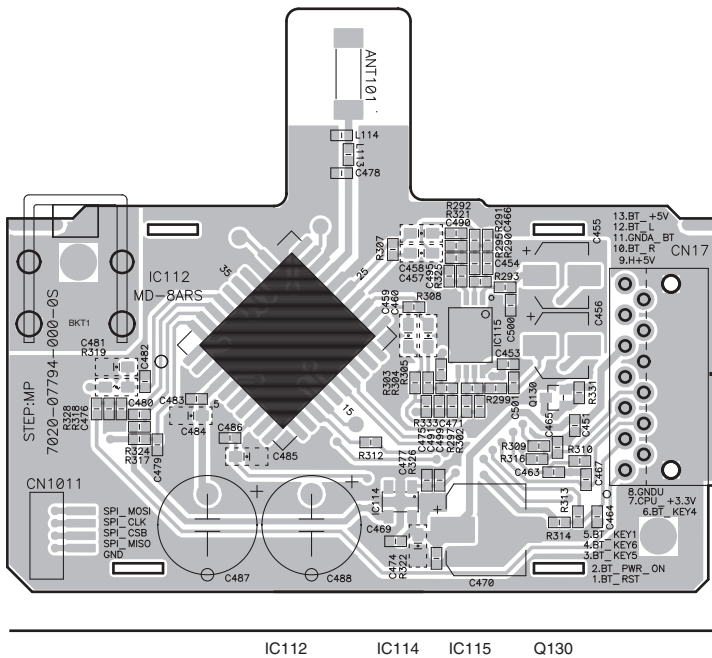
SIDE A

MF NTC ASSY



AF CN5

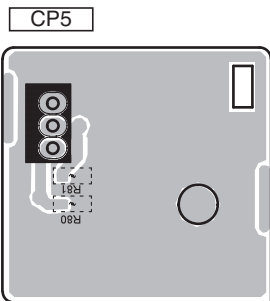
NF BT ASSY



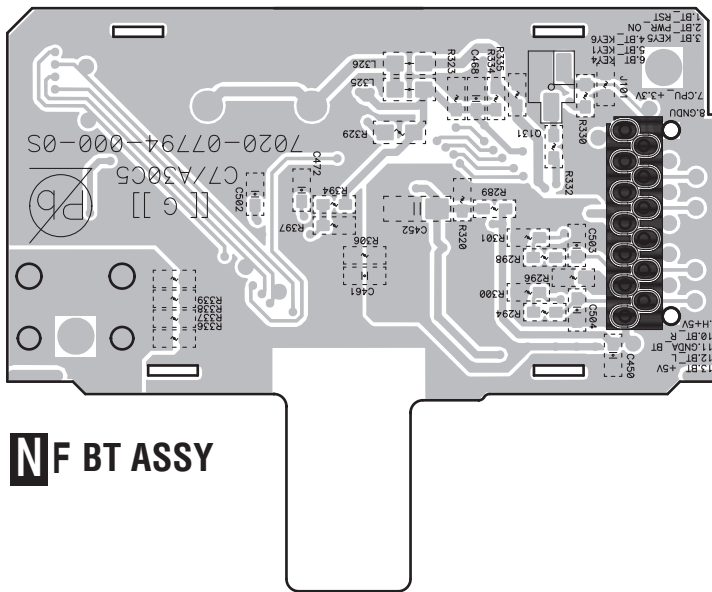
IC112 IC114 IC115 Q130

SIDE A

SIDE B



MF NTC ASSY



NF BT ASSY

Q131

SIDE B