

Service Manual

ORDER NO.
RRV1290

AUDIO/VIDEO STEREO RECEIVER

VSX-604S

● Refer to the service manual RRV1248 for VSX-504S/KUXJ.

THIS MANUAL IS APPLICABLE TO THE FOLLOWING MODEL(S) AND TYPE(S).

Type	Model	Power Requirement	The voltage can be converted by the following method.
	VSX-604S		
KUXJ	○	AC120V	————
KCXJ	○	AC120V	————
SDXJ	○	AC110V/120-127V/220V/240V	With the voltage selector

CONTENTS

1. CONTRAST OF MISCELLANEOUS PARTS	2
2. BLOCK DIAGRAM	7
3. SCHEMATIC AND PCB DIAGRAMS	8

1. CONTRAST OF MISCELLANEOUS PARTS

NOTES :

- Parts marked by "NSP" are generally unavailable because they are not in our Master Spare Parts List.
- The \triangle mark found on some component parts indicates the importance of the safety factor of the part. Therefore, when replacing, be sure to use parts of identical designation.
- Parts marked by "⊙" are not always kept in stock. Their delivery time may be longer than usual or they may be unavailable.
- When ordering resistors, first convert resistance values into code form as shown in the following examples.

Ex. 1 When there are 2 effective digits (any digit apart from 0), such as 560 ohm and 47k ohm (tolerance is shown by J = 5%, and K = 10%).

560Ω → 56 × 10¹ → 561 RD1/8PM $\begin{matrix} 5 & 6 & 1 \\ \hline & & J \end{matrix}$
 47kΩ → 47 × 10³ → 473 RD1/4PS $\begin{matrix} 4 & 7 & 3 \\ \hline & & J \end{matrix}$
 0.5Ω → 0R5 RN2H $\begin{matrix} 0 & R & 5 \\ \hline & & K \end{matrix}$
 1Ω → 010 RS1P $\begin{matrix} 0 & 1 & 0 \\ \hline & & K \end{matrix}$

Ex. 2 When there are 3 effective digits (such as in high precision metal film resistors).

5.62kΩ → 562 × 10¹ → 5621 RM1/4PC $\begin{matrix} 5 & 6 & 2 & 1 \\ \hline & & & F \end{matrix}$

VSX-604S/KUXJ, KCXJ, SDXJ and VSX-504S/KUXJ have the same construction except for the following:

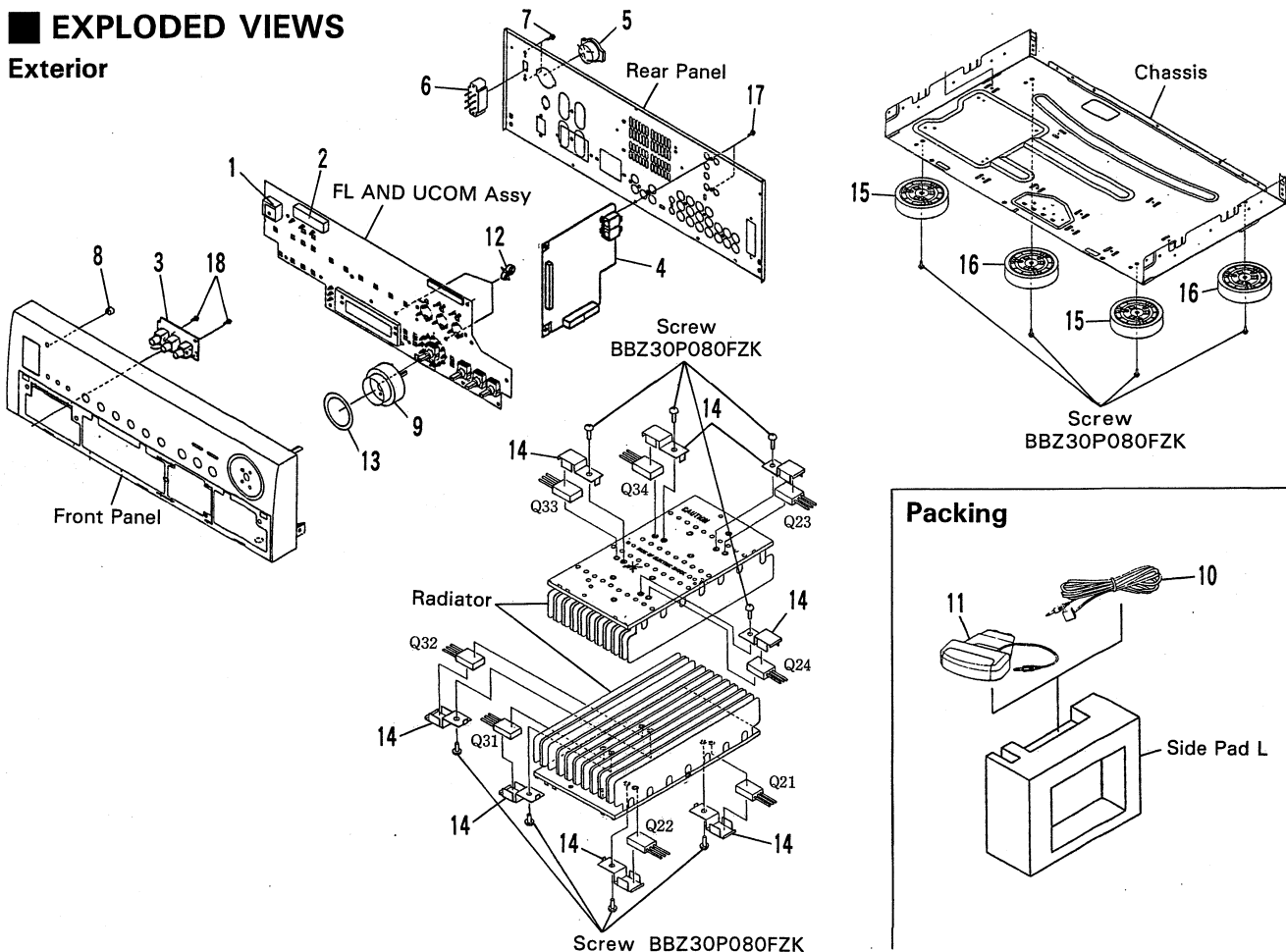
Mark	Symbol & Description	Part No.				Remarks
		VSX-504S/ KUXJ	VSX-604S/ KUXJ	VSX-604S/ KCXJ	VSX-604S/ SDXJ	
NSP	MOTHER assy	AWK7124	AWK7121	AWK7121	AWK7123	
	PS AND FUNC assy	AWZ7597	AWZ7589	AWZ7589	AWZ7596	
	REG. assy	AWZ7592	AWZ7718	AWZ7718	AWZ7718	
NSP	FL AND AMP assy	AWK7125	AWK7122	AWK7122	AWK7190	
	FL AND UCOM assy	AWZ7599	AWZ7593	AWZ7593	AWZ7760	
	└IR RECEIVER assy	Not used	AWX7012	AWX7012	AWX7012	
	└PHOTO DIODE assy	Not used	AWZ7657	AWZ7657	AWZ7657	*1, No. 1
	└RF AMP assy	Not used	AWZ7658	AWZ7658	AWZ7658	*1, No. 2
	FRONT AV assy	Not used	AWZ7595	AWZ7595	AWZ7595	*1, No. 3
	GUI AND UCOM assy	Not used	AWQ7001	AWQ7001	AWQ7005	*1, No. 4
\triangle	Q21, Q22, Q31, Q32 Transistor	2SC4793	2SC5174P	2SC5174P	2SC5174P	
\triangle	Q23, Q24, Q33, Q34 Transistor	2SA1837	2SA1932P	2SA1932P	2SA1932P	
\triangle	S1 Voltage selector (AC110V/120-127V/220V/240V)	Not used	Not used	Not used	AKX-507	*1, No. 5
\triangle	S2 Voltage selector (AC110-127V/220-240V)	Not used	Not used	Not used	AKX1004	*1, No. 6
\triangle	T1 Power transformer (AC120V)	ATS7049	ATS7049	ATS7049	Not used	
\triangle	T1 Power transformer (AC110V/120-127V/220V/240V)	Not used	Not used	Not used	ATS7051	
\triangle	FU1 Fuse (10A)	REK1087	REK1087	REK1087	Not used	
\triangle	FU1, FU2 Fuse (5A)	Not used	Not used	Not used	REK1083	
\triangle	AC power cord	PDG1015	PDG1015	PDG1015	ADG1157	
	Cord stopper	AEP-113	AEP-113	AEP-113	AEC-882	
	Screw	Not used	Not used	Not used	BBZ30P080FZK	*1, No. 7
	LED lens	Not used	Not used	Not used	PNW2019	*1, No. 8
	FL panel	AAK7125	AAK7124	AAK7124	AAK7124	
	Jog ring	AAK7129	Not used	Not used	Not used	
	G. U. I. lens	Not used	AAK7128	AAK7128	AAK7128	*1, No. 9
	Sub panel	AAP7011	AAP7010	AAP7010	AAP7010	
	Mini repeater	Not used	ADF1002	ADF1002	ADF1002	*1, No. 10
	Main repeater	Not used	AXF1079	AXF1079	AXF1079	*1, No. 11
	Cable holder	Not used	AEC7019	AEC7019	AEC7019	*1, No. 12
	PVC sheet	Not used	AEC7035	AEC7035	AEC7035	*1, No. 13

Mark	Symbol & Description	Part No.				Remarks
		VSX-604S/ KUXJ	VSX-604S/ KUXJ	VSX-604S/ KCXJ	VSX-604S/ SDXJ	
NSP NSP	Driver holder	Not used	ANG7031	ANG7031	ANG7031	*1, No. 14
	Front panel	AMB7177	AMB7175	AMB7175	AMB7200	
	Insulator assy (for Front)	DXA1490	Not used	Not used	Not used	
	Insulator (for Rear)	PNW1912	Not used	Not used	Not used	
	Leg assy (for Front)	Not used	AMR2633	AMR2633	AMR2633	*1, No. 15
	Leg assy (for Rear)	Not used	AMR2634	AMR2634	AMR2634	*1, No. 16
	Screw	Not used	BBZ30P080FZK	BBZ30P080FZK	BBZ30P080FZK	*1, No. 17
	Screw	Not used	BPZ26P080FMC	BPZ26P080FMC	BPZ26P080FMC	*1, No. 18
	Rear panel	ANC7172	ANC7170	ANC7170	ANC7171	
	Remote control unit (CU-VSX095)	AXD7045	Not used	Not used	Not used	
	Remote control unit (CU-VSX096)	Not used	AXD7044	AXD7044	AXD7044	
	Battery (LR03, AAA)	AEX1006	Not used	Not used	Not used	
	Battery (R6P, AA)	Not used	VEM-013	VEM-013	VEM-013	
	Battery cover	Not used	AZN7187	AZN7187	AZN7187	
	Packing case	AHD7110	AHD7107	AHD7107	AHD7109	
	Operating instructions (English)	ARB7023	ARB7022	ARB7022	ARB7022	
	Operating instructions (French)	Not used	Not used	ARC7033	Not used	
	Operating instructions (Chinese/Spanish)	Not used	Not used	Not used	ARC7034	

*1: The numbers in the remarks column correspond to the numbers on the exploded views.

EXPLODED VIEWS

Exterior



■ CONTRAST OF PCB ASSEMBLIES

PS AND FUNC Assy

AWZ7589, AWZ7596 and AWZ7597 have the same construction except for the following:

Mark	Symbol & Description	Part No.			Remarks
		AWZ7597	AWZ7589	AWZ7596	
IC705		Not used	NJM78M56FAS	NJM78M56FAS	
Q470		2SA933S	Not used	Not used	
Q471		DTC124ES	Not used	Not used	
Q484		Not used	2SC4793	2SC4793	*
Q803		Not used	2SC1740S	2SC1740S	*
D413, D414		Not used	1SS252	1SS252	*
D419		MTZJ5.6A	Not used	Not used	
D470, D472-D474		1SS252	Not used	Not used	
D496		Not used	MTZJ13A	MTZJ13A	*
S801		Not used	Not used	ASH1027	*
T401		ATT1223	ATT7006	ATT7007	
C409		Not used	CEAS470M50	CEAS470M50	*
C411		Not used	CKCYX104M25	CKCYX104M25	*
C412		CEAS470M25	Not used	Not used	
C415		CEAS102M25	CEHAQ102M25	CEHAQ102M25	
C422 (0.022 μ F/AC400V)		ACG1030	ACG1030	Not used	
C422 (0.1 μ F/AC250V)		Not used	Not used	ACE-507	
C423		Not used	Not used	CKPUYB102K50	*
C807		Not used	CEAS101M25	CEAS101M25	*
C808		Not used	CKCYF473Z50	CKCYF473Z50	*
C813		Not used	CEAS4R7M50	CEAS4R7M50	*
R433		RS2LMF151J	Not used	Not used	
R434		Not used	RD1/8PM221J	RD1/8PM221J	*
R439		RD1/2PM470J	RD1/2PM220J	RD1/2PM220J	
R444		Not used	RD1/2PM100J	RD1/2PM100J	*
R445		Not used	RS3LMF221J	RS3LMF221J	*
R470, R471		RD1/8PM224J	Not used	Not used	
R472		RD1/8PM562J	Not used	Not used	
R473		RD1/8PM103J	Not used	Not used	
R474		RD1/8PM102J	Not used	Not used	
R495		Not used	RD1/2PMF820J	RD1/2PMF820J	*
R497		Not used	RS2LMF820J	RS2LMF820J	*
R441 (2.2M Ω , 1/2W)		ACN-208	ACN-208	Not used	
R808		Not used	RD1/2PM271J	RD1/2PM271J	*
R811		Not used	RD1/8PM151J	RD1/8PM151J	*
R1812, R1827		RD1/8PM392J	RD1/8PM472J	RD1/8PM472J	
CN403		Not used	Not used	AKC1016	*
CN407 Jack		AKN1006	Not used	Not used	
CN412		Not used	KM250MA5	KM250MA5	*
CN804		Not used	53290-0910	53290-0910	*

Note *: Refer to "3.2 PS AND FUNC ASSY (1/2)".

REG. Assy

AWZ7718 and AWZ7592 have the same construction except for the following :

Mark	Symbol & Description	Part No.		Remarks
		AWZ7592	AWZ7718	
R430		RS2LMF821J	Not used	
R430 (150 Ω)		Not used	ACN7002	

FL AND UCOM Assy

AWZ7593, AWZ7760 and AWZ7599 have the same construction except for the following:

Mark	Symbol & Description	Part No.			Remarks
		AWZ7599	AWZ7593	AWZ7760	
	IC902	PDG133A	PDG134A	PDG134A	
	IC2101	Not used	M5218AP	M5218AP	*
	IC2102	Not used	TC74HC02AF	TC74HC02AF	*
	IC2103	Not used	M5223P	M5223P	*
	Q901	Not used	Not used	DTA124ES	*
	Q902, Q903	2SC1740S	Not used	Not used	
	Q911	Not used	2SA1145	2SA1145	*
	Q912, Q955	Not used	DTC124ES	DTC124ES	*
	Q956, Q2101, Q2103, Q2132	Not used	2SC1740S	2SC1740S	*
	Q2104, Q2133	Not used	DTA124ES	DTA124ES	*
	Q2106	Not used	DTC143ES	DTC143ES	*
	Q2131	Not used	2SA933S	2SA933S	*
	D901	Not used	Not used	AEL1099	*
	D902	1SS252	Not used	Not used	
	D937-D944	Not used	AEL1122	AEL1122	*
	D951, D952, D955, D960, D2101-D2103, D2131-D2133	Not used	1SS252	1SS252	*
	D961	Not used	MTZJ8.2	MTZJ8.2	*
	S906, S927, S930	Not used	ASG1034	ASG1034	*
	S907-S909	ASG1034	Not used	Not used	
	L2101	Not used	LAU221K	LAU221K	*
	C902	CKCYX103M25	Not used	Not used	
	C912	Not used	CKPUYF473Z16	CKPUYF473Z16	*
	C913	Not used	Not used	CKPUYB102K50	*
	C2101	Not used	CKPUYF103Z25	CKPUYF103Z25	*
	C2102	Not used	CEJA221M6	CEJA221M6	*
	C2103	Not used	CEAS100M50	CEAS100M50	*
	C2104	CEAS221M10	Not used	Not used	
	C2131	Not used	CEAS4R7M50	CEAS4R7M50	*
	C2132, C2134	Not used	CKCYF103Z50	CKCYF103Z50	*
	C2135	Not used	CKCYX104M25	CKCYX104M25	*
	C2133	Not used	CFTXA103J50	CFTXA103J50	*
	R901	Not used	Not used	RD1/8PM271J	*
	R902, R905	RD1/8PM101J	Not used	Not used	
	R903, R942, R943	RD1/8PM103J	Not used	Not used	
	R904	RD1/8PM562J	Not used	Not used	
	R937, R2111, R2131, R2136, R2137, R2142	Not used	RD1/8PM103J	RD1/8PM103J	*
	R947	Not used	Not used	RD1/8PM223J	*
	R948	Not used	RD1/8PM473J	RD1/8PM473J	*
	R976-R978, R2107	Not used	RD1/8PM472J	RD1/8PM472J	*
	R996	Not used	RD1/8PM270J	RD1/8PM270J	*
	R998, R2113	Not used	RD1/8PM223J	RD1/8PM223J	*
	R2101	Not used	RD1/8PM563J	RD1/8PM563J	*
	R2102, R2103, R2106, R2108, R2112, R2135, R2139, R2143	Not used	RD1/8PM222J	RD1/8PM222J	*
	R2104	Not used	RD1/8PM753J	RD1/8PM753J	*
	R2105, R2114, R2134, R2140	Not used	RD1/8PM102J	RD1/8PM102J	*
	R2118	Not used	RD1/8PM562J	RD1/8PM562J	*
	R2121	Not used	RD1/8PM470J	RD1/8PM470J	*
	R2132, R2133, R2141	Not used	RD1/8PM104J	RD1/8PM104J	*
	R2138	Not used	RD1/8PM332J	RD1/8PM332J	*
	R2144	Not used	RD1/8PM392J	RD1/8PM392J	*
	Remote receiver unit	AXX1023	Not used	Not used	

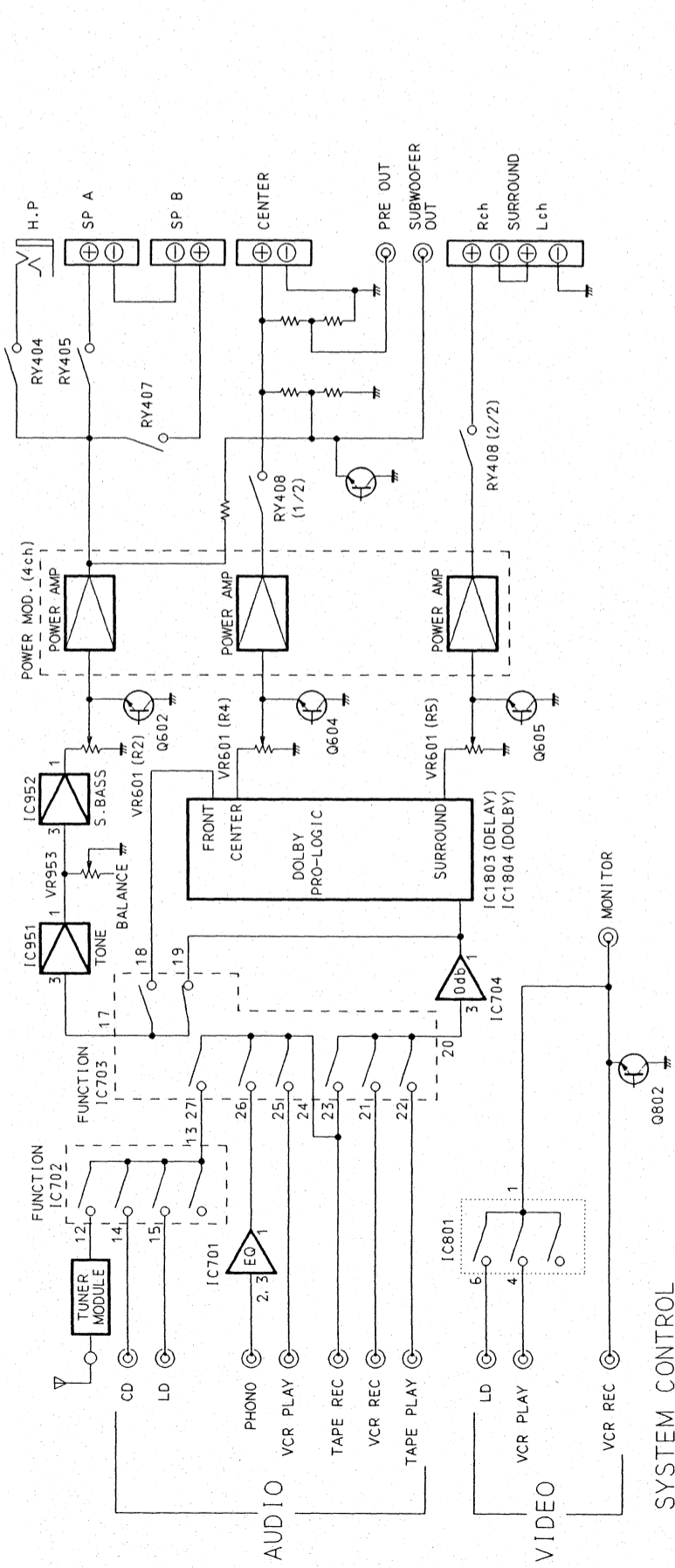
Note *: Refer to "3.3 FL AND UCOM ASSY".

PCB PARTS LIST

Mark	No.	Description	Parts No.
PHOTO DIODE ASSY			
SEMICONDUCTORS			
	IC2602		PD410PI
	IC2601		PFC502
	IC2603		SBX8025-H
	Q2602		2SC2712
	Q2601		2SK302
COILS AND FILTERS			
	L2601		LAU221K
CAPACITORS			
	C2602		CCSQCH181J50
	C2604		CCSQCH820J50
	C2607		CEAL470M6R3
	C2605		CKSQYB103K50
	C2603		CKSQYB473K50
	C2601, C2606		CKSQYF104Z25
RESISTORS			
	All Resistors		RS1/10S□□□J
OTHERS			
	LED HOLDER (PLS)		AMR7040
RF AMP ASSY			
SEMICONDUCTORS			
	IC2501		CXA1600P
	IC2502, IC2504		TC7SU04F
	D2501, D2502, D2503		1SS352
COILS AND FILTERS			
	L2501, L2502		LAU221K
CAPACITORS			
	TC2501		ACM7001
	C2520		CCSQCH150J50
	C2514		CCSQCH681J50
	C2501		CEAL100M6R3
	C2508		CEAL101M6R3
	C2503		CEAL2R2M35
	C2504		CEALR10M50
	C2507		CKSQYB103K50
	C2513		CKSQYB104K25
	C2502, C2506		CKSQYB473K50
RESISTORS			
	All Resistors		RS1/10S□□□J
OTHERS			
	X2501 CERAMIC RESONATOR		ASS7005
FRONT AV ASSY			
CAPACITORS			
	C991, C992		CKCYX473M25
RESISTORS			
	All Resistors		RD1/8PM□□□J
OTHERS			
	PIN JACK (1P)		AKB7011
	CN992 PLUG 5-P		KM250MA5

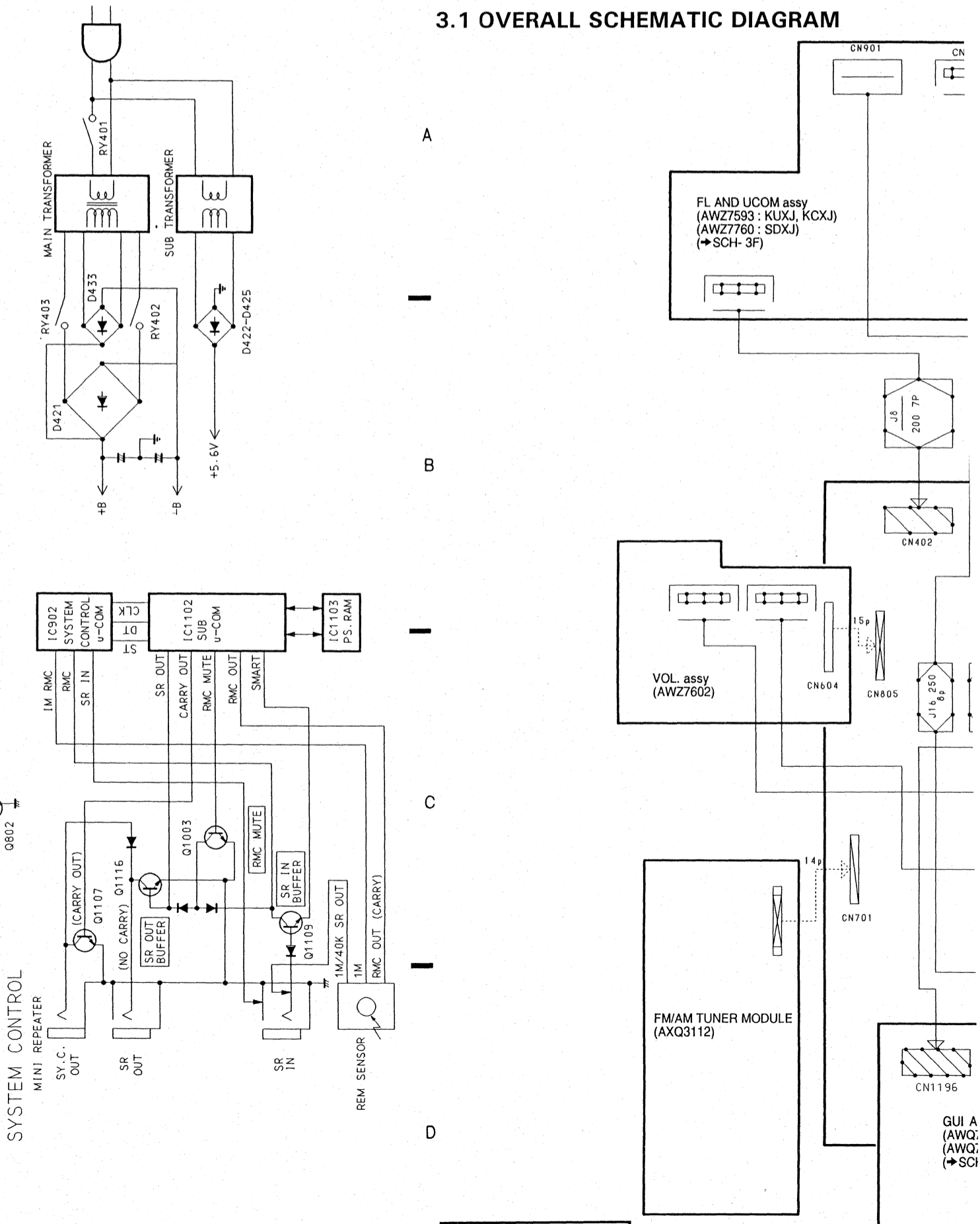
Mark	No.	Description	Parts No.
GUI AND UCOM ASSY			
SEMICONDUCTORS			
	IC1103		LH5268AN1TLL
	IC1105		MM1067XD
	IC1106		NJM78L05A
	IC1102		PD5320A
	IC1104		PD6157A
	IC1101		TC74HC123AF
	Q1110		2SA1515
	Q1109		2SA933S
	Q1101, Q1102, Q1104, Q1107, Q1111		2SC1740S
	Q1106		XDC124ES
	Q1103		XDC143ES
	D1101, D1103-D1109, D1111		1SS252
	D1114-D1118		1SS252
	D1102		MTZJ2.7
SWITCHES AND RELAYS			
	S1101 (SD type only)		ASH1027
COILS AND FILTERS			
	L1101, L1102		LAU220J
CAPACITORS			
	C1126		ACH7013
	TC1101		ACM-023
	C1123, C1124		CCCCH150J50
	C1111		CCCCH221J50
	C1125		CCCCH330J50
	C1106, C1108		CEAS010M50
	C1103		CEAS100M50
	C1114, C1118, C1130		CEAS101M10
	C1115, C1116, C1120, C1127		CEAS470M25
	C1113		CEASR47M50
	C1101, C1112		CKCYB102K50
	C1131		CKCYB331K50
	C1109		CKCYB332K50
	C1110		CKCYB471K50
	C1107		CKCYB561K50
	C1104, C1117, C1119, C1121, C1122		CKCYF103Z50
	C1105, C1128, C1129		CKCYF473Z50
	C1132		CKPUYB101K50
RESISTORS			
	R1118		RD1/4PM680J
	Other Resistors		RD1/8PM□□□J
OTHERS			
	CN1184 9P SOCKET		52418-0910
	JACK		AKN-209
	JACK		AKN7003
	X1102 CERAMIC RESONATOR		ASS1025
	X1103 CRYSTAL RESONATOR		ASS1056
	X1101 CERAMIC RESONATOR		ASS1112
	JACK1102		BKN1005
	CN1196 CONNECTOR (3P)		KPE3
	CN1194, CN1195 CONNECTOR (8P)		KPE8

2. BLOCK DIAGRAM



3. SCHEMATIC AND PCB DIAGRAMS

3.1 OVERALL SCHEMATIC DIAGRAM

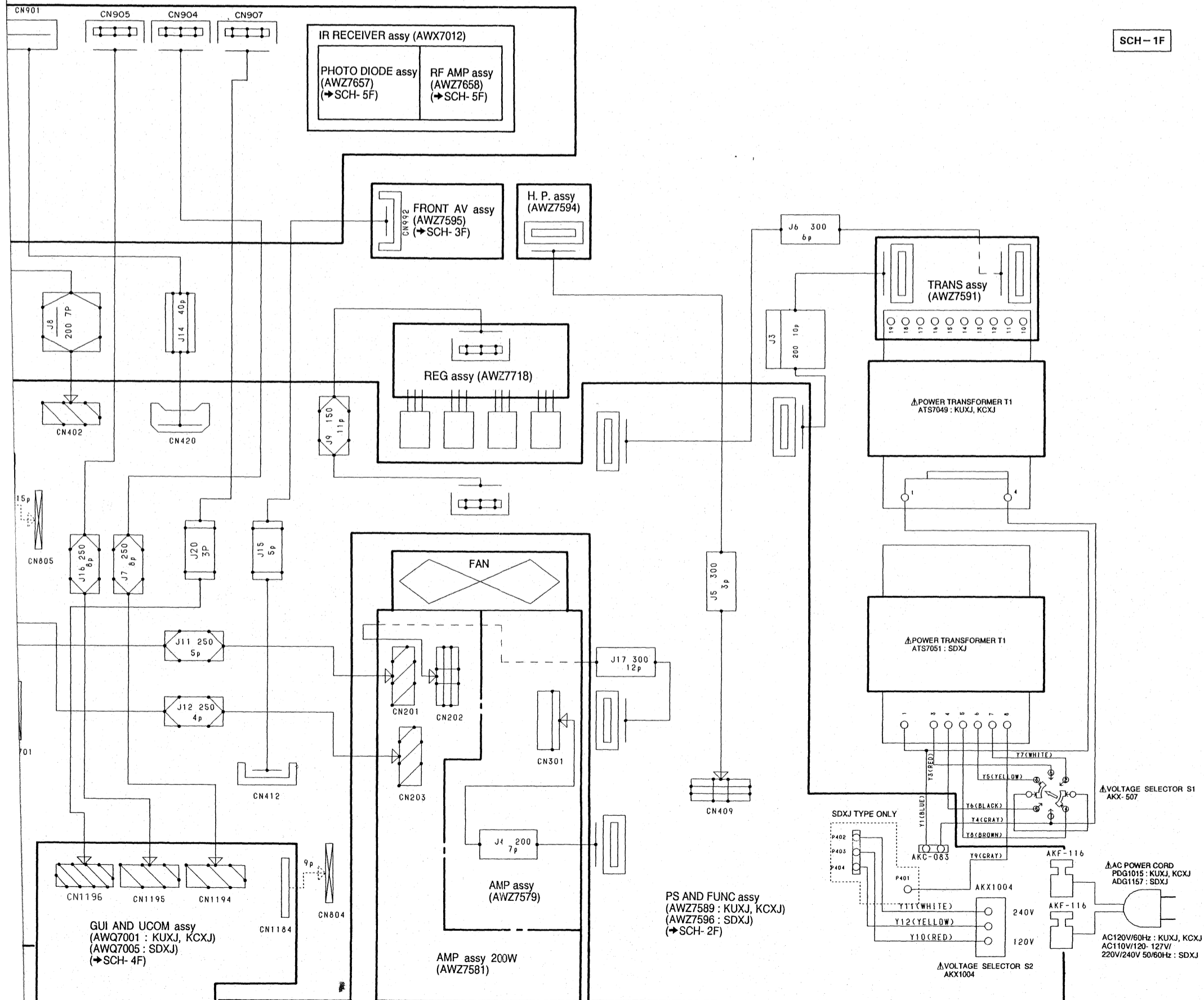


SCH-1F

OVERALL SCHEMATIC DIAGRAM

GRAMS

SCH-1F



SCH-1F

OVERALL SCHEMATIC DIAGRAM

3.2 PS AND FUNC ASSY (1/2)

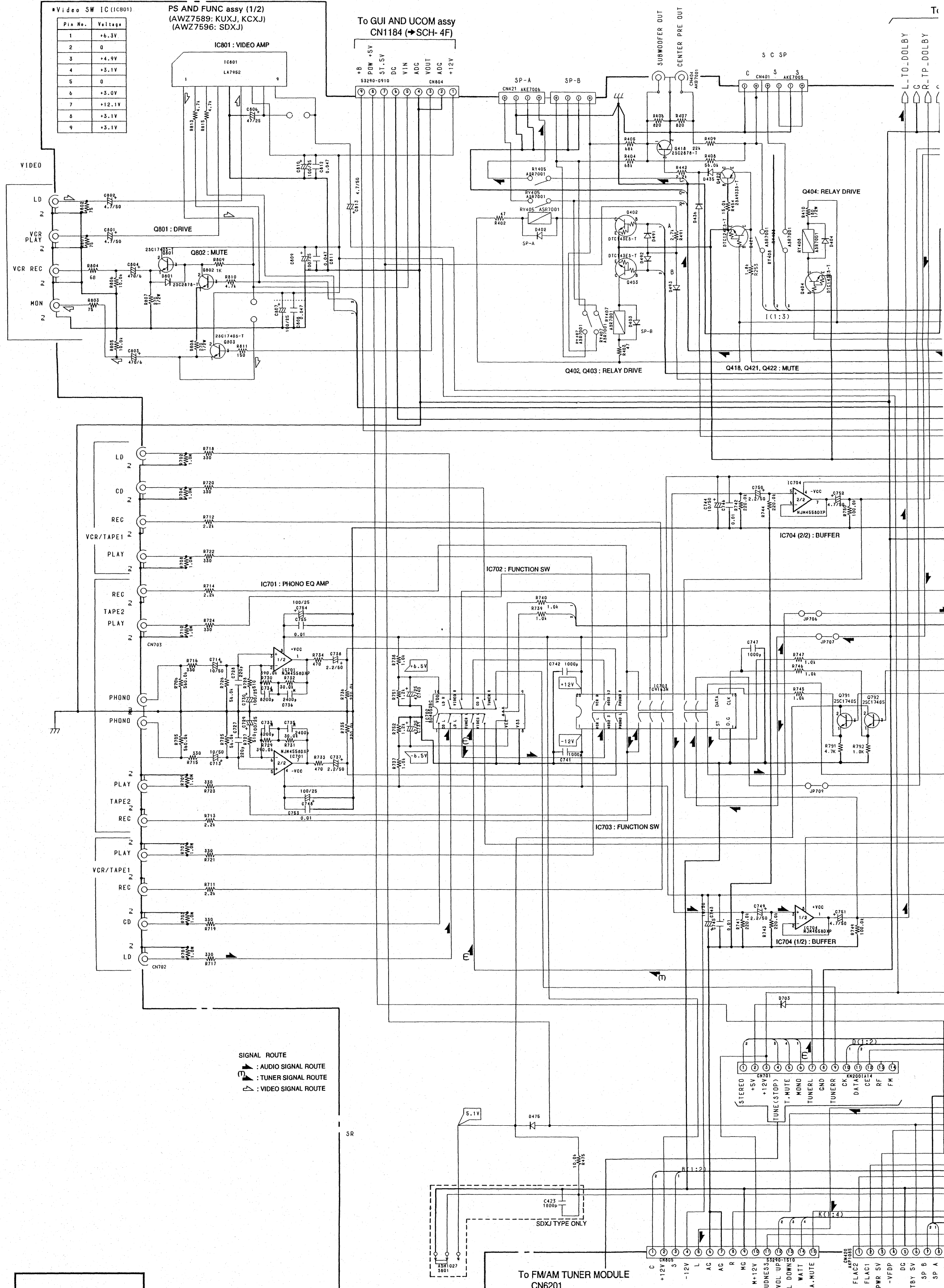
A
B
C
D
E
F

*Video SW IC (IC801)

Pin No.	Voltage
1	+6.3V
2	0
3	+4.9V
4	+3.1V
5	0
6	+3.0V
7	+12.1V
8	+3.1V
9	+3.1V

PS AND FUNC assy (1/2)
(AWZ7589: KUXJ, KCXJ)
(AWZ7596: SDXJ)

To GUI AND UCOM assy
CN1184 (SCH-4F)



SIGNAL ROUTE
 ▲ : AUDIO SIGNAL ROUTE
 ▴ : TUNER SIGNAL ROUTE
 ▽ : VIDEO SIGNAL ROUTE

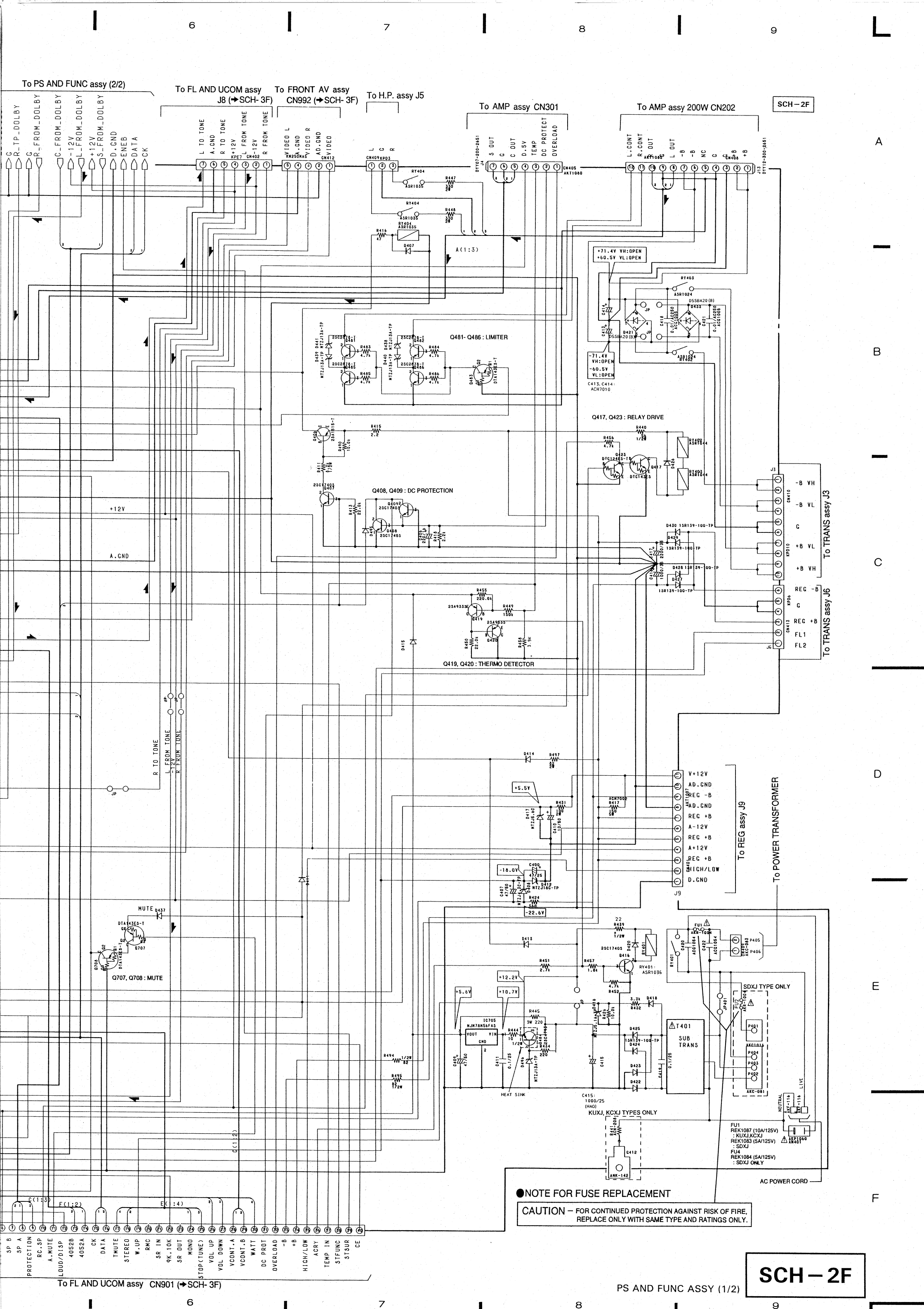
SCH-2F

PS AND FUNC ASSY (1/2)

To FM/AM TUNER MODULE
CN6201

To VOL. assy CN604

STEREO
 +5V
 +12V
 TUNER (STOP)
 T-MUTE
 MONO
 TUNER L
 TUNER R
 CK
 DATA
 CE
 RF
 FM



SCH-2F

A

B

C

D

E

F

NOTE FOR FUSE REPLACEMENT

CAUTION - FOR CONTINUED PROTECTION AGAINST RISK OF FIRE, REPLACE ONLY WITH SAME TYPE AND RATINGS ONLY.

SCH-2F

PS AND FUNC ASSY (1/2)

To PS AND FUNC assy (2/2)

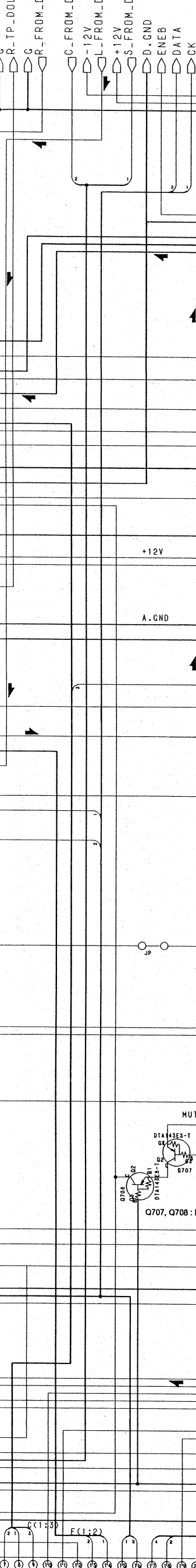
To FL AND UCOM assy J8 (SCH-3F)

To FRONT AV assy CN992 (SCH-3F)

To H.P. assy J5

To AMP assy CN301

To AMP assy 200W CN202



To FL AND UCOM assy CN901 (SCH-3F)

To TRANS assy J3
To TRANS assy J6

To REG assy J9

To POWER TRANSFORMER

To AMP assy 200W CN202

HEAT SINK

SDXJ TYPE ONLY

AC POWER CORD

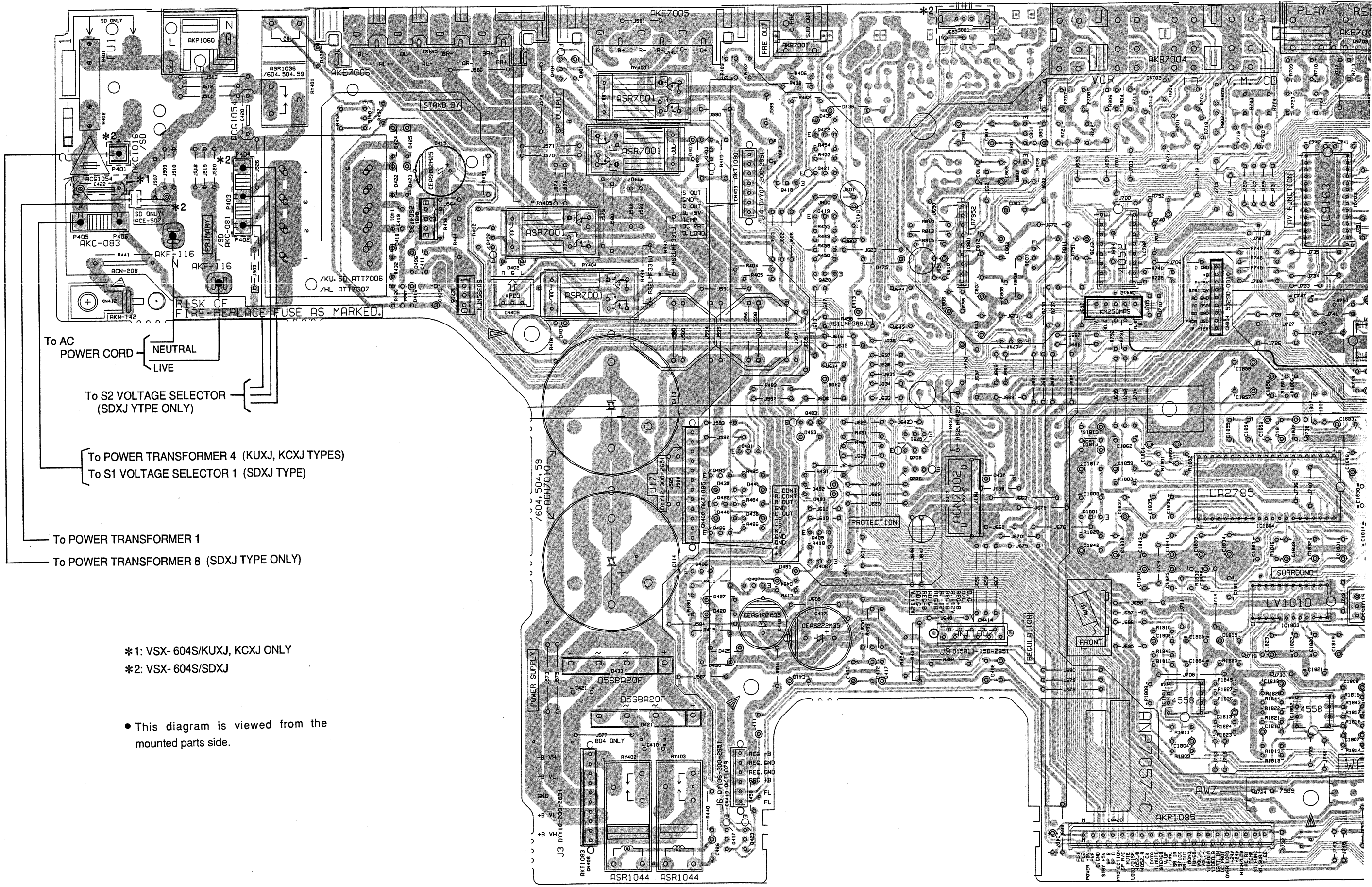
PS AND FUNC assy

A

B

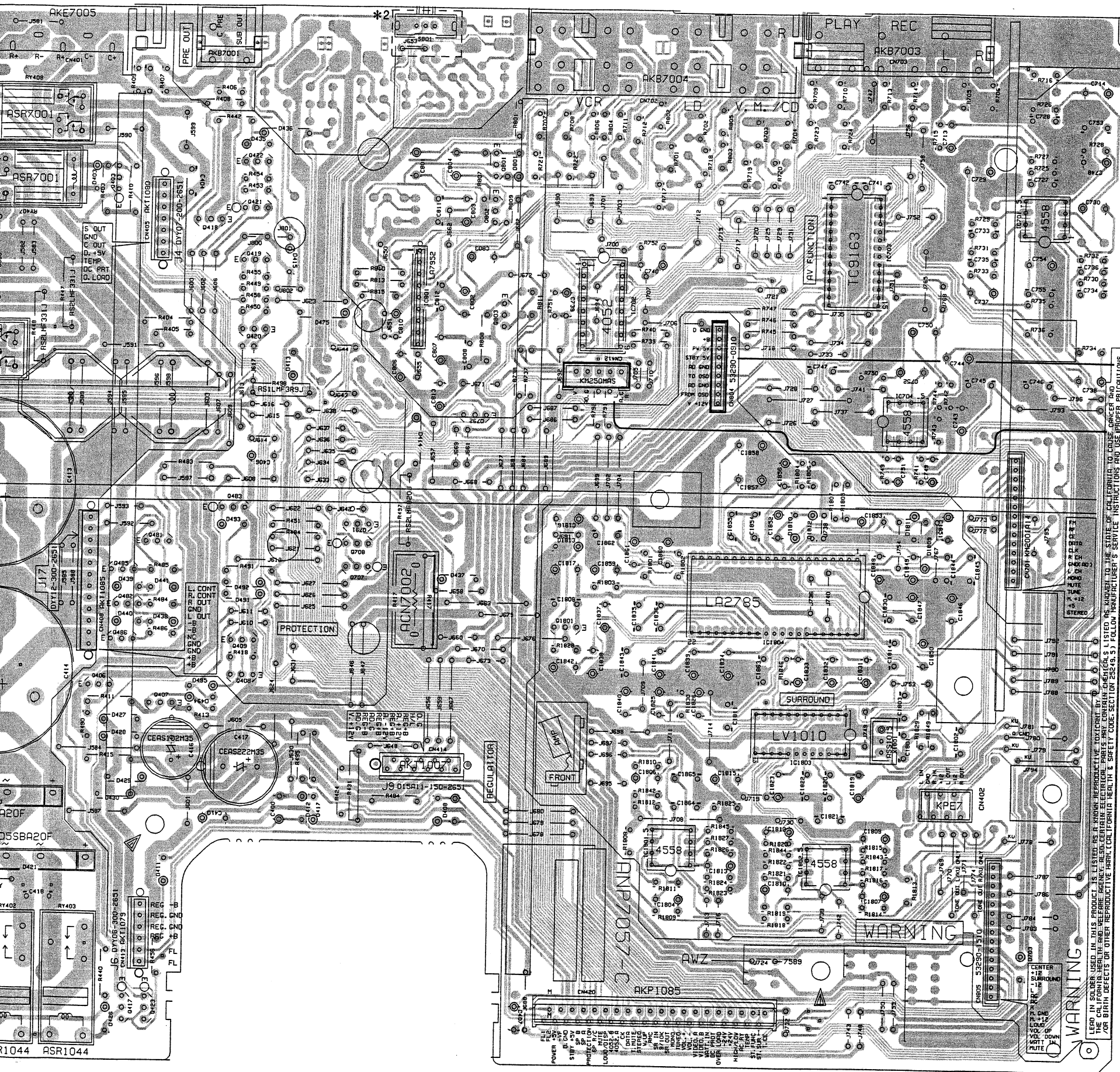
C

D



*1: VSX-604S/KUXJ, KCXJ ONLY
 *2: VSX-604S/SDXJ

• This diagram is viewed from the mounted parts side.



- Q404
- Q416
- Q422 Q801
- Q403
- Q421 Q802 IC701
- Q418 Q802 IC703
- Q484 Q419
- Q402 IC801
- IC702
- Q803
- Q420

IC705 To GUI AND UCOM assy CN1184

IC704 To FRONT AV assy CN992

- Q483
- Q481 Q708
- Q485 Q707
- Q482 IC804
- Q486 Q1801
- Q406
- Q409

IC803

IC801

IC802

- Q417
- Q423

NOTE FOR PCB DIAGRAMS:
 1. Part numbers in PCB diagrams match those in the schematic diagrams.
 2. A comparison between the main parts of PCB and schematic diagrams is shown below.

Symbol in PCB Diagrams	Symbol in Schematic Diagrams	Part Name
		Transistor
		Diode
		Capacitor (Polarized)

3. The transistor terminal marked with E or C shows the emitter.
 4. The diode terminal marked with @ or C shows cathode side.
 5. The capacitor terminal marked with @ or C shows negative terminal.

A

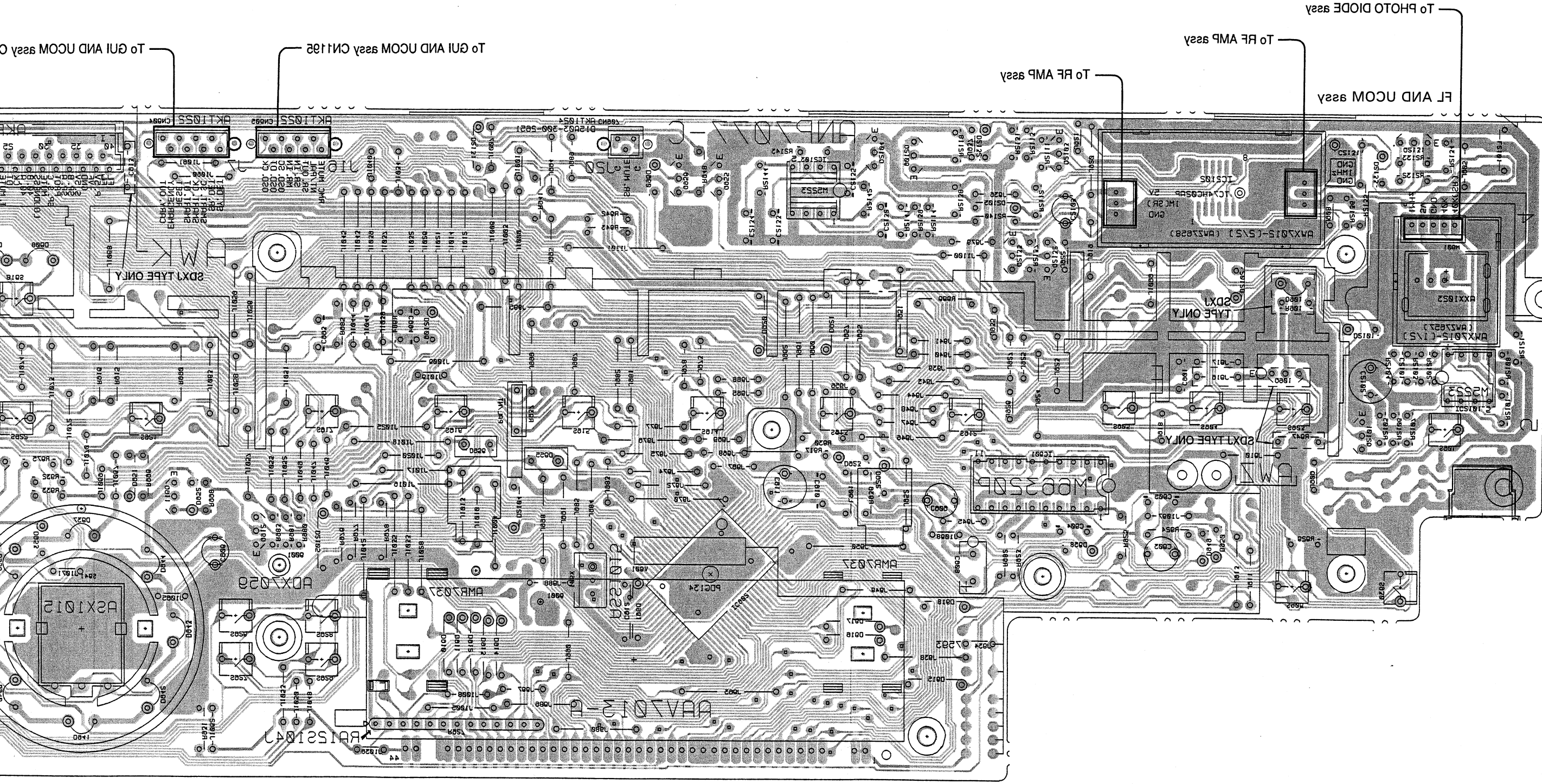
B

C

D

3.3 FL AND UCOM ASSY AND FRONT VA ASSY

• This diagram is viewed from the foil side.



IC601 05103 05135 05133
IC5105
0801
05101
IC5101 05131
05137
IC5104 05106
IC5103
IC505 0222 0222
0215
0211

A

B

C

D

3.3 FL AND UCOM ASSY AND FRONT AV ASSY

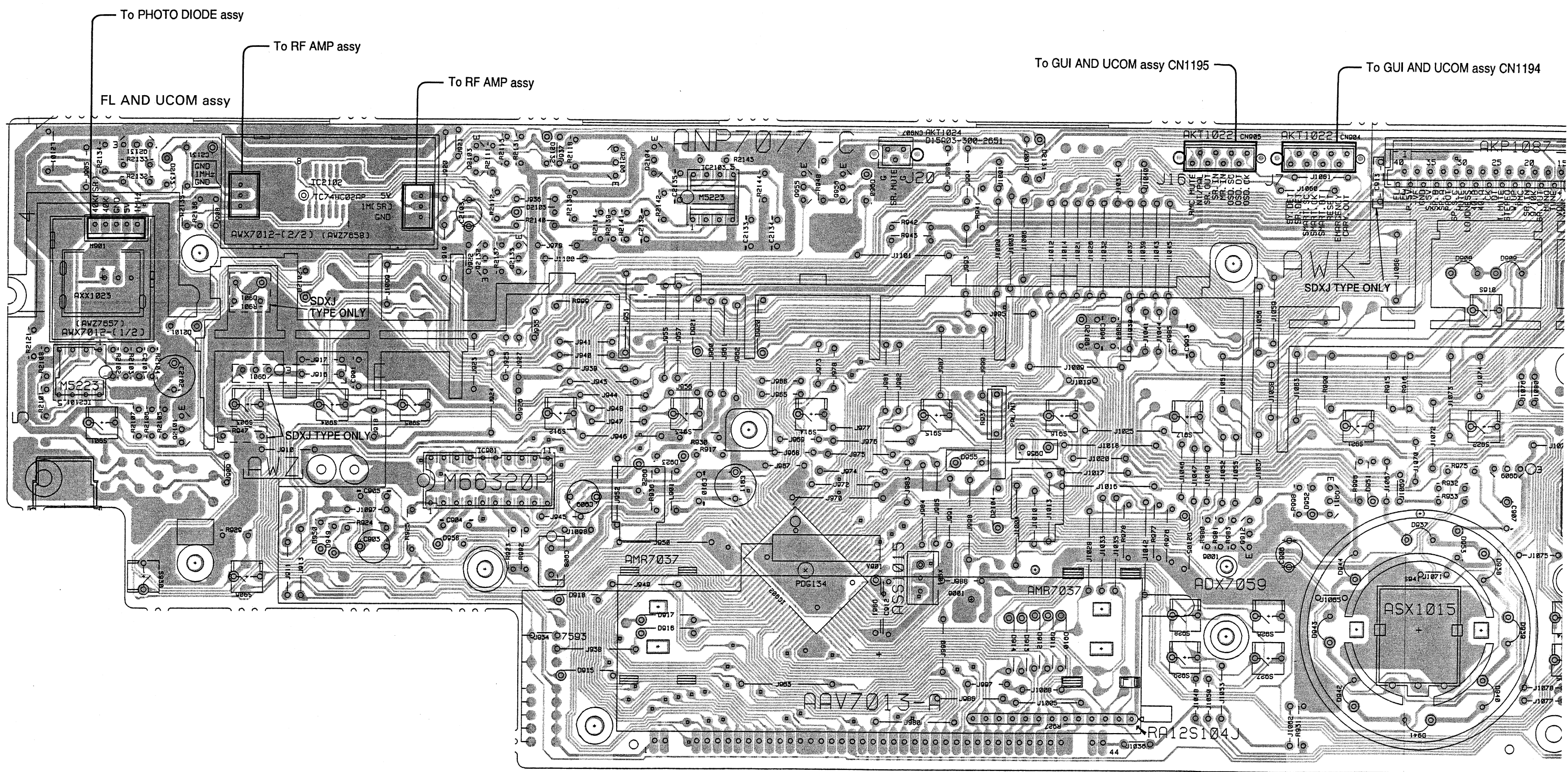
• This diagram is viewed from the mounted parts side.

A

B

C

D



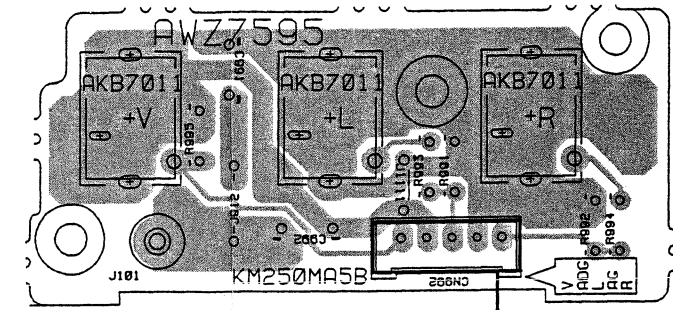
IC2101 Q2131 Q2101 Q901 IC2102 Q2103 Q2132 Q2133 IC901 Q2106 Q2104 IC2103 Q955 Q956 IC902 Q912 Q911 Q909

• This diagram is viewed from the mounted parts side.

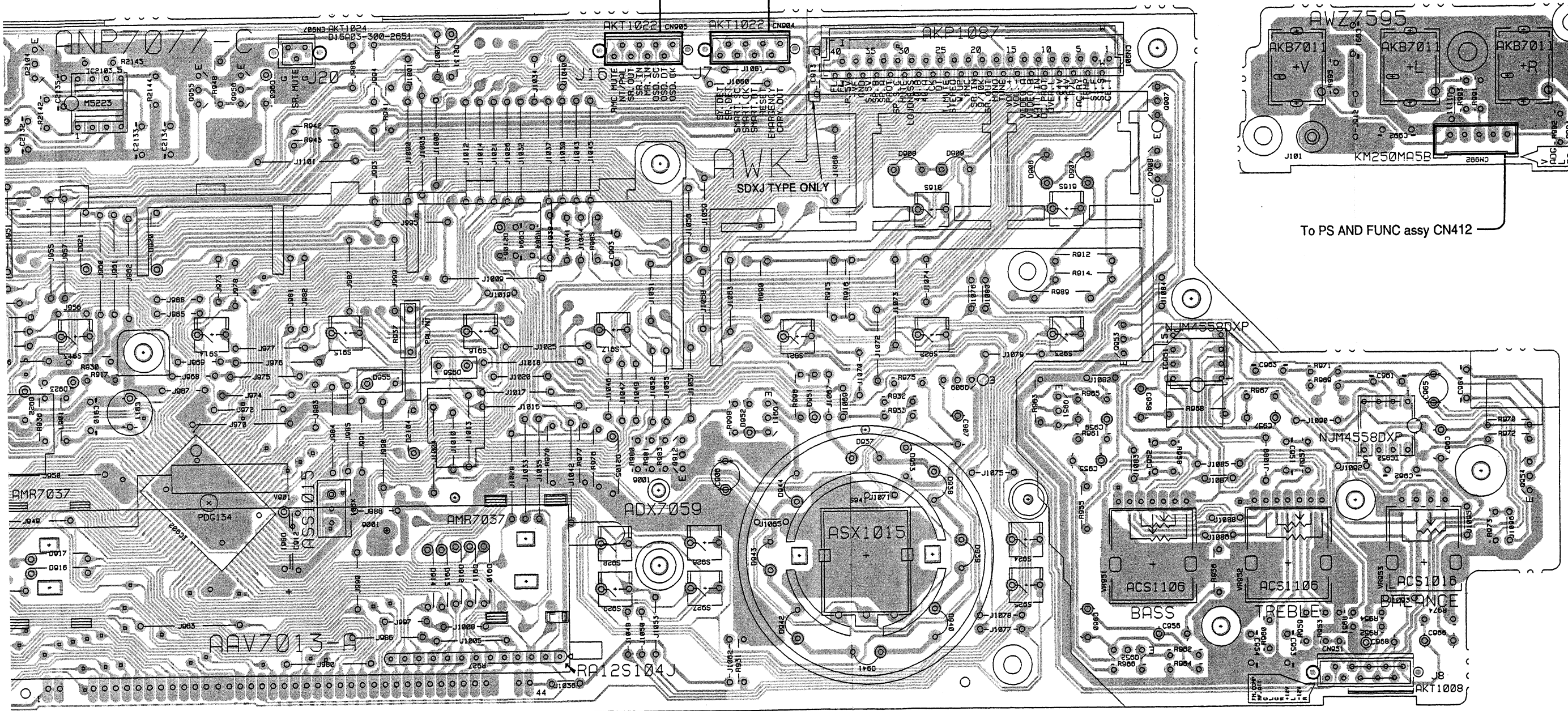
To GUI AND UCOM assy CN1195

To GUI AND UCOM assy CN1194

FRONT AV assy



To PS AND FUNC assy CN412



2106 Q2104 IC2103 Q955 Q956 IC902 Q912 Q911 Q909 Q951 Q953 Q907 Q909 IC951 Q952 IC952 Q954

A

B

C

D

4

5

6

7

8

9

4

5

6

7

8

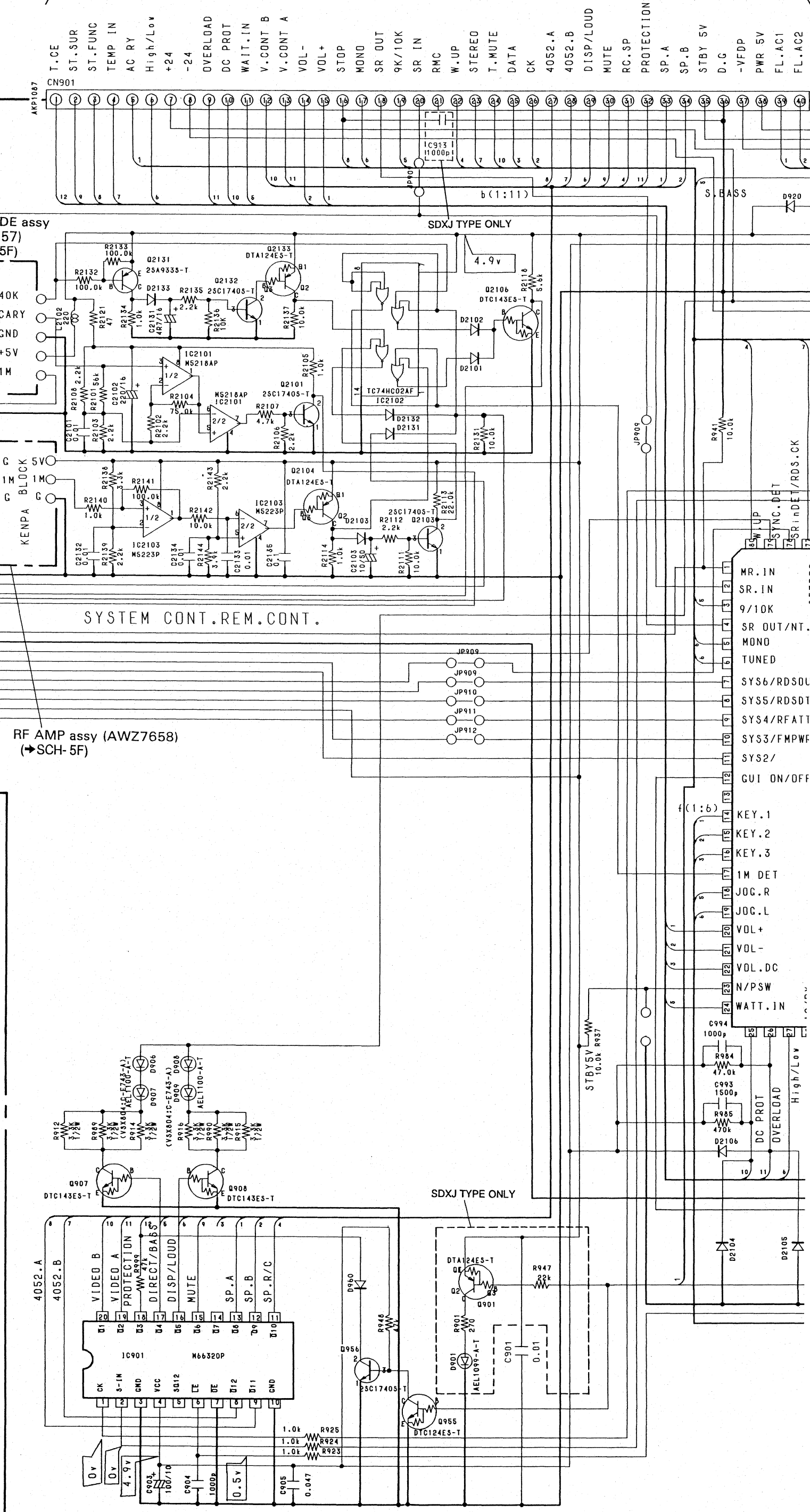
9

To PS AND FUNC assy (1/2) CN420 (→SCH- 2F)

To GUI AND UCOM assy
CN1196 (→SCH- 4F)

To GUI AND UCOM assy
CN1195 (→SCH- 4F)

To GUI AND UCOM assy
CN1194 (→SCH- 4F)



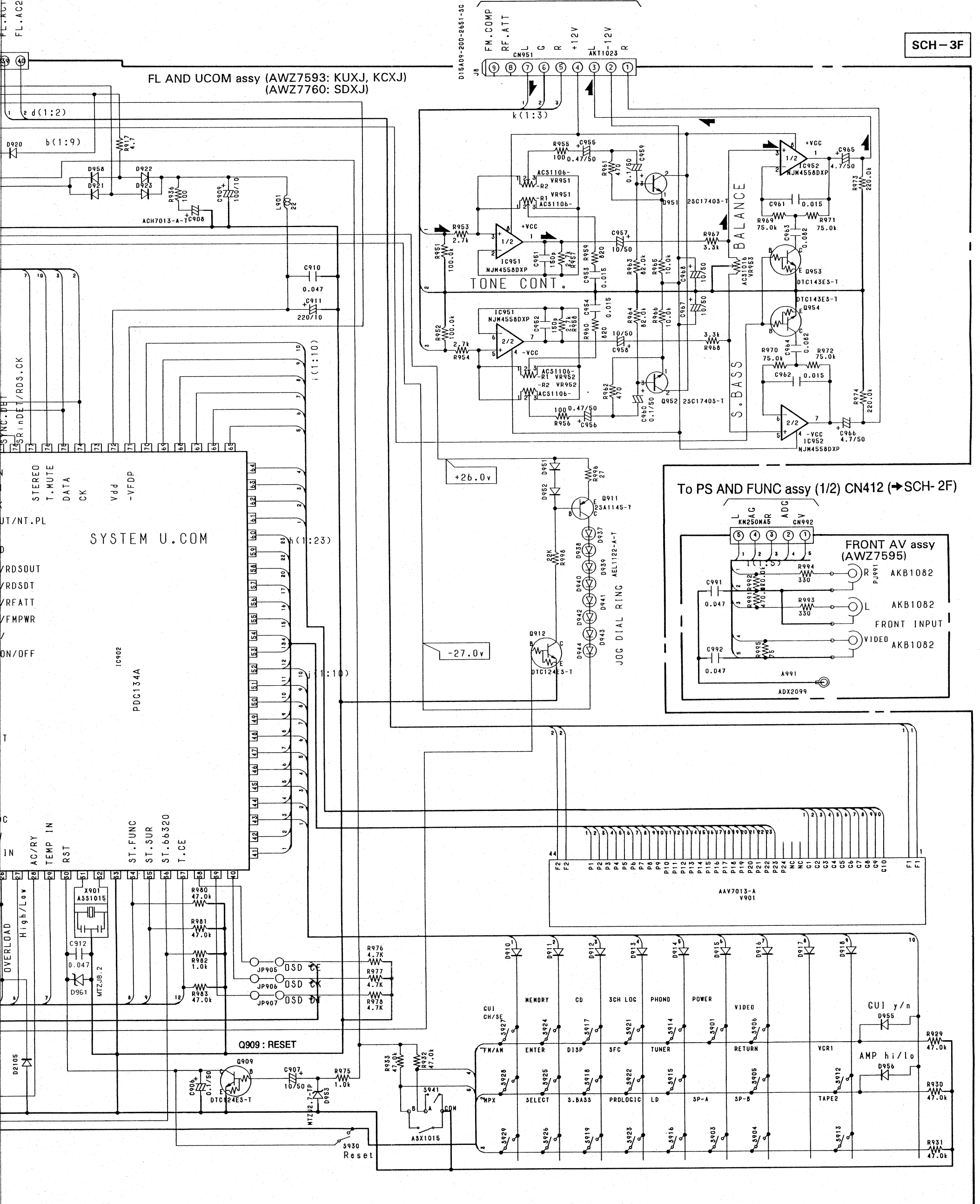
SCH-3F

FL AND UCOM ASSY,
FRONT AV ASSY

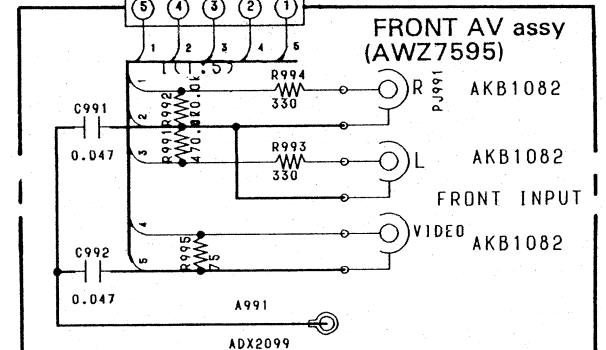
To PS AND FUNC assy (1/2)
CN402 (→SCH-2F)

SCH-3F

FL AND UCOM assy (AWZ7593: KUXJ, KCXJ)
(AWZ7760: SDXJ)



To PS AND FUNC assy (1/2) CN412 (→SCH-2F)

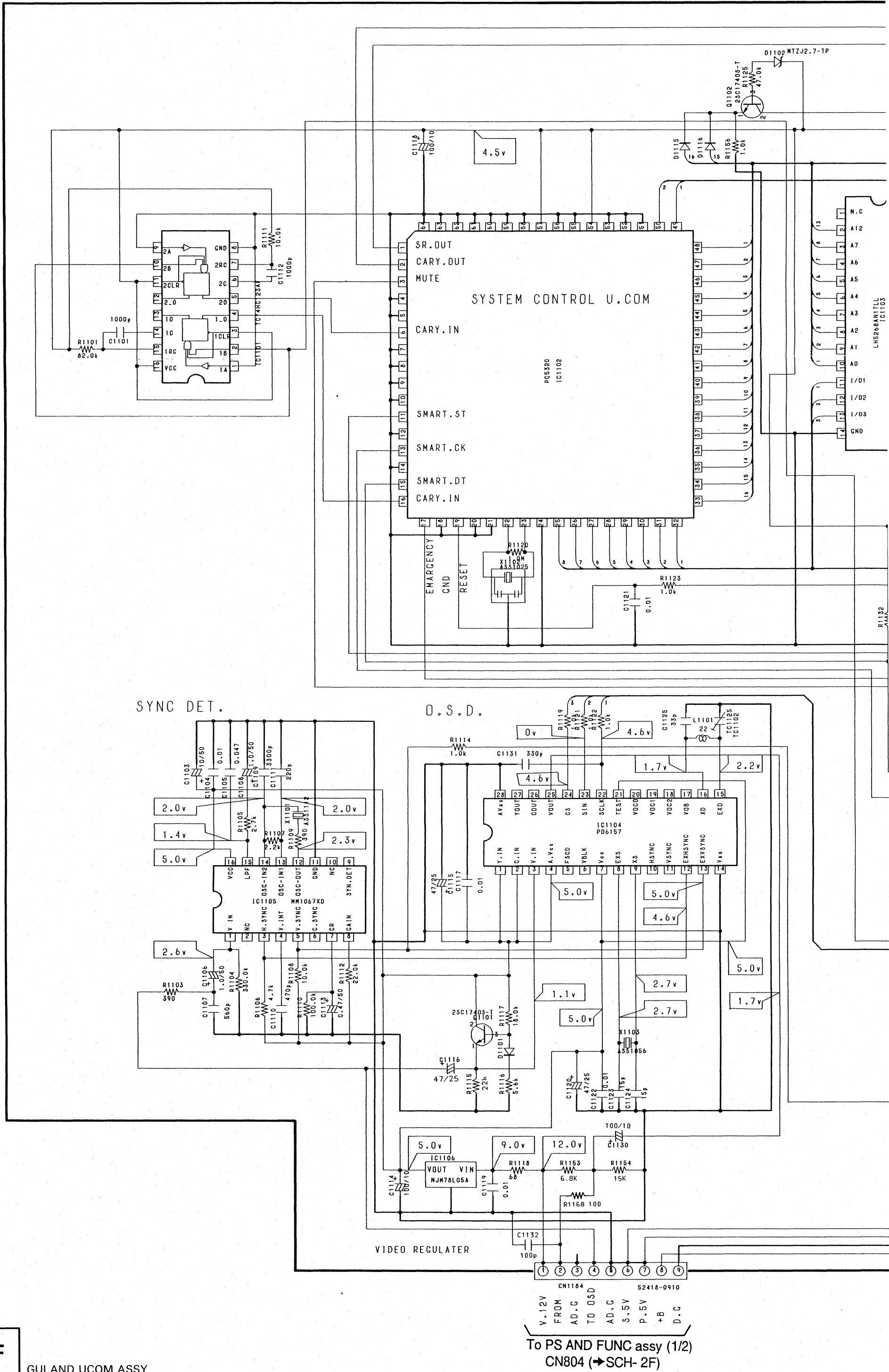


SIGNAL ROUTE
▲ : AUDIO SIGNAL ROUTE

FL AND UCOM ASSY,
FRONT AV ASSY

SCH-3F

3.4 GUI AND UCOM ASSY, PHOTO DIODE ASSY AND RF AMP ASSY

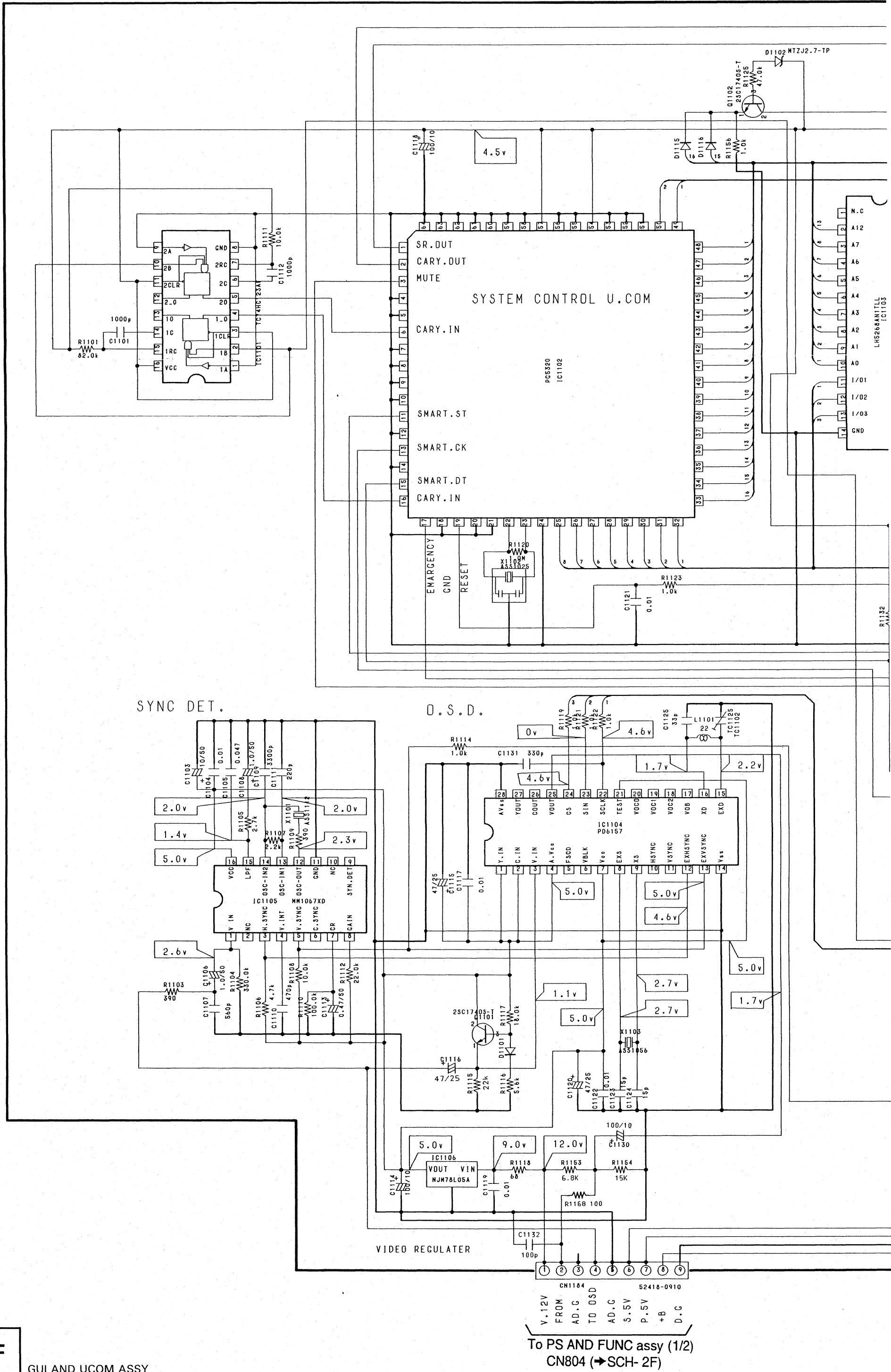


SCH-4F

GUI AND UCOM ASSY

To PS AND FUNC assy (1/2)
CN804 (→SCH-2F)

3.4 GUI AND UCOM ASSY, PHOTO DIODE ASSY AND RF AMP ASSY



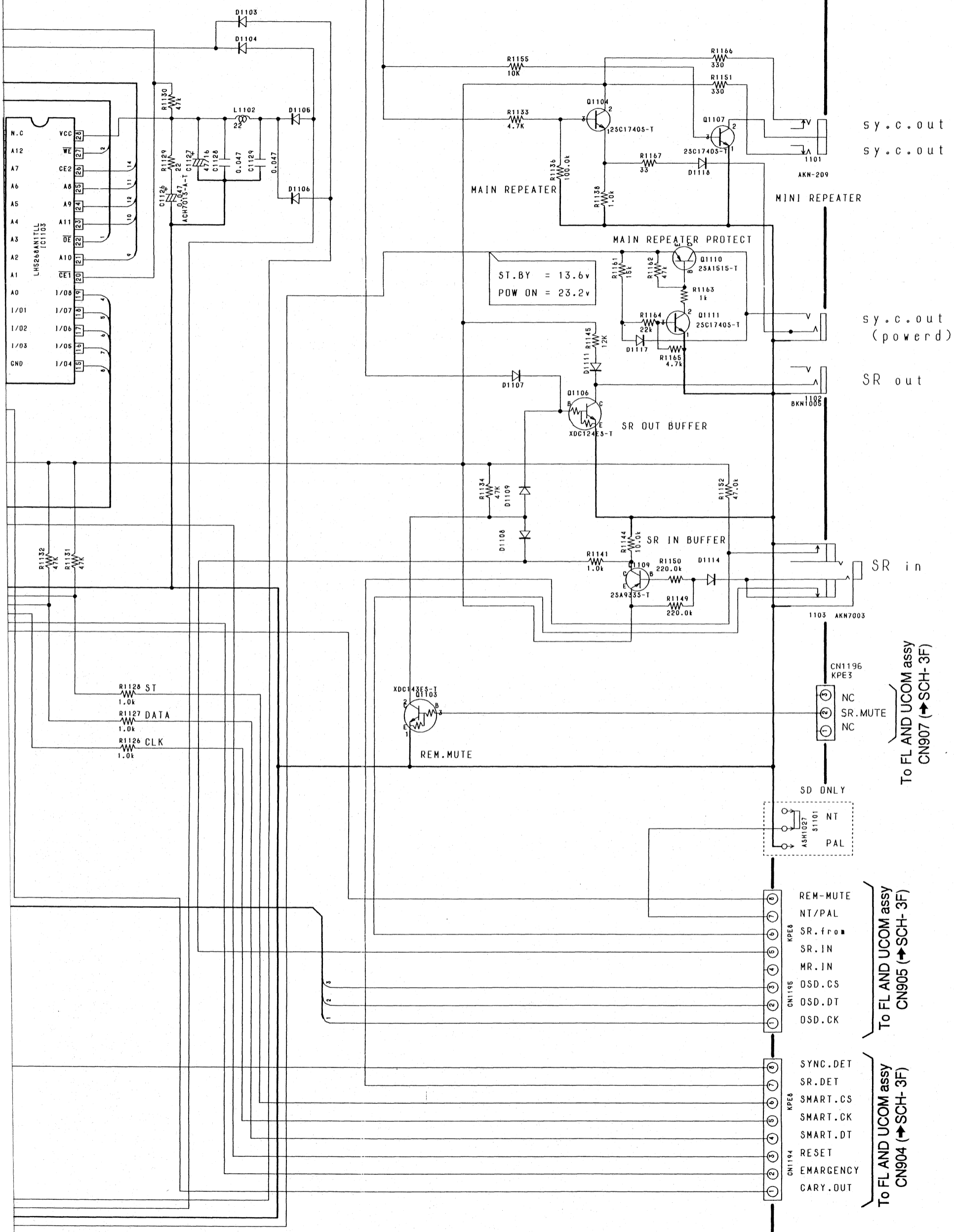
SCH-4F

GUI AND UCOM ASSY

To PS AND FUNC assy (1/2)
CN804 (→SCH-2F)

SCH-4F

GUI AND UCOM assy (AWQ7001: KUXJ, KCXJ) (AWQ7005: SD)



A
B
C
D
E
F

sy.c.out
sy.c.out

sy.c.out
(powered)

SR out

SR in

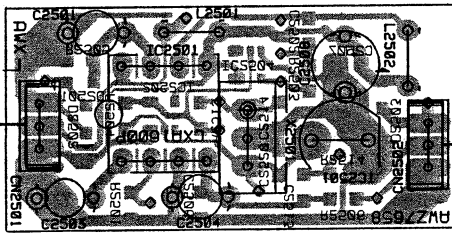
To FL AND UCOM assy
CN907 (→SCH-3F)

To FL AND UCOM assy
CN905 (→SCH-3F)

To FL AND UCOM assy
CN904 (→SCH-3F)

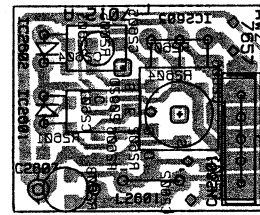
• This diagram is viewed from the mounted parts side.

IC2502 IC2501 IC2504
RF AMP Assy



To FL AND UCOM Assy

IC2601 IC2602 Q2602 IC2603
PHOTO DIODE Assy



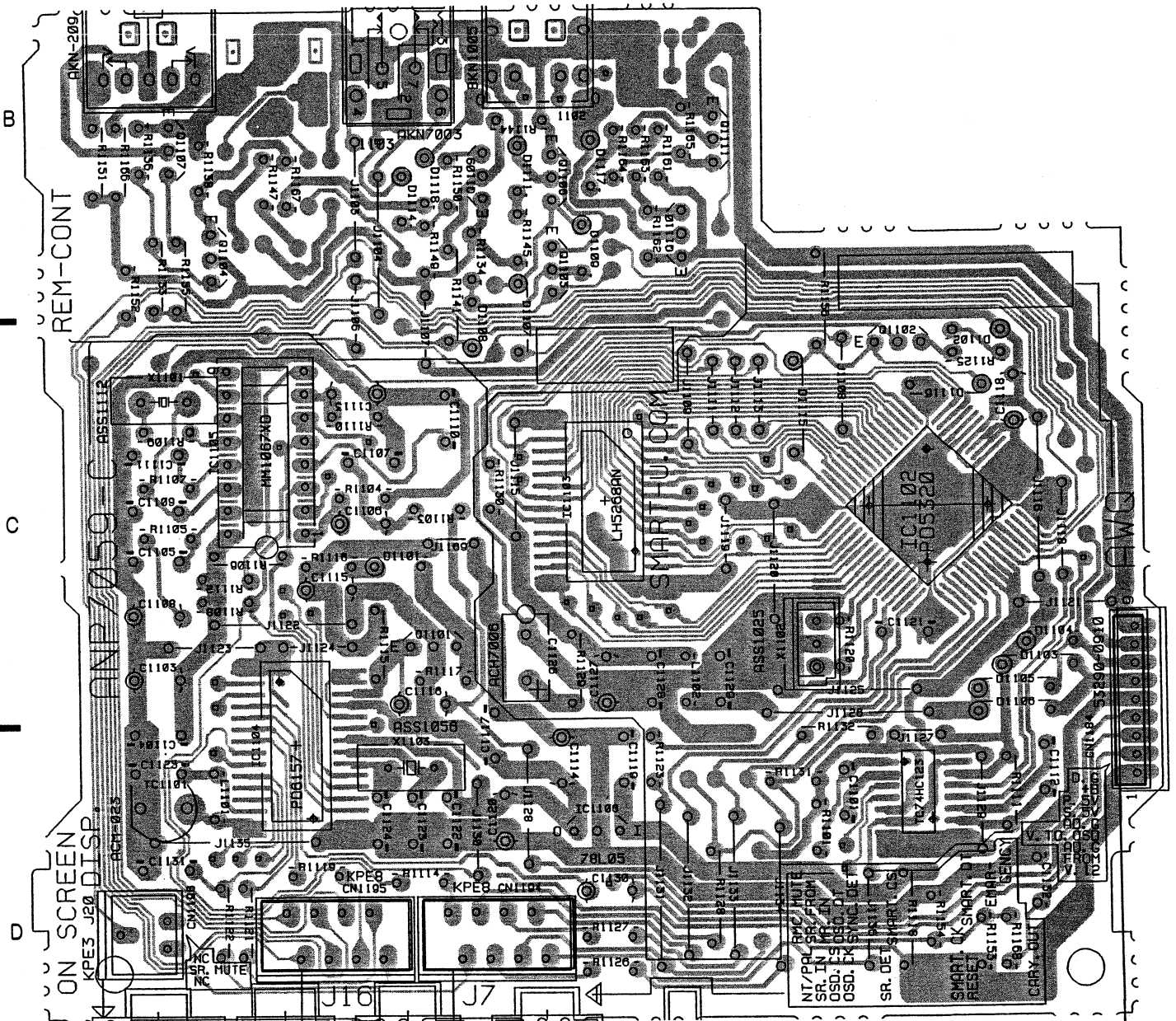
To FL AND UCOM Assy

Q1107 Q1104 IC1105
IC1104

Q1109 Q1106 Q1103 IC1103 Q1110 Q1111
Q1101 IC1106

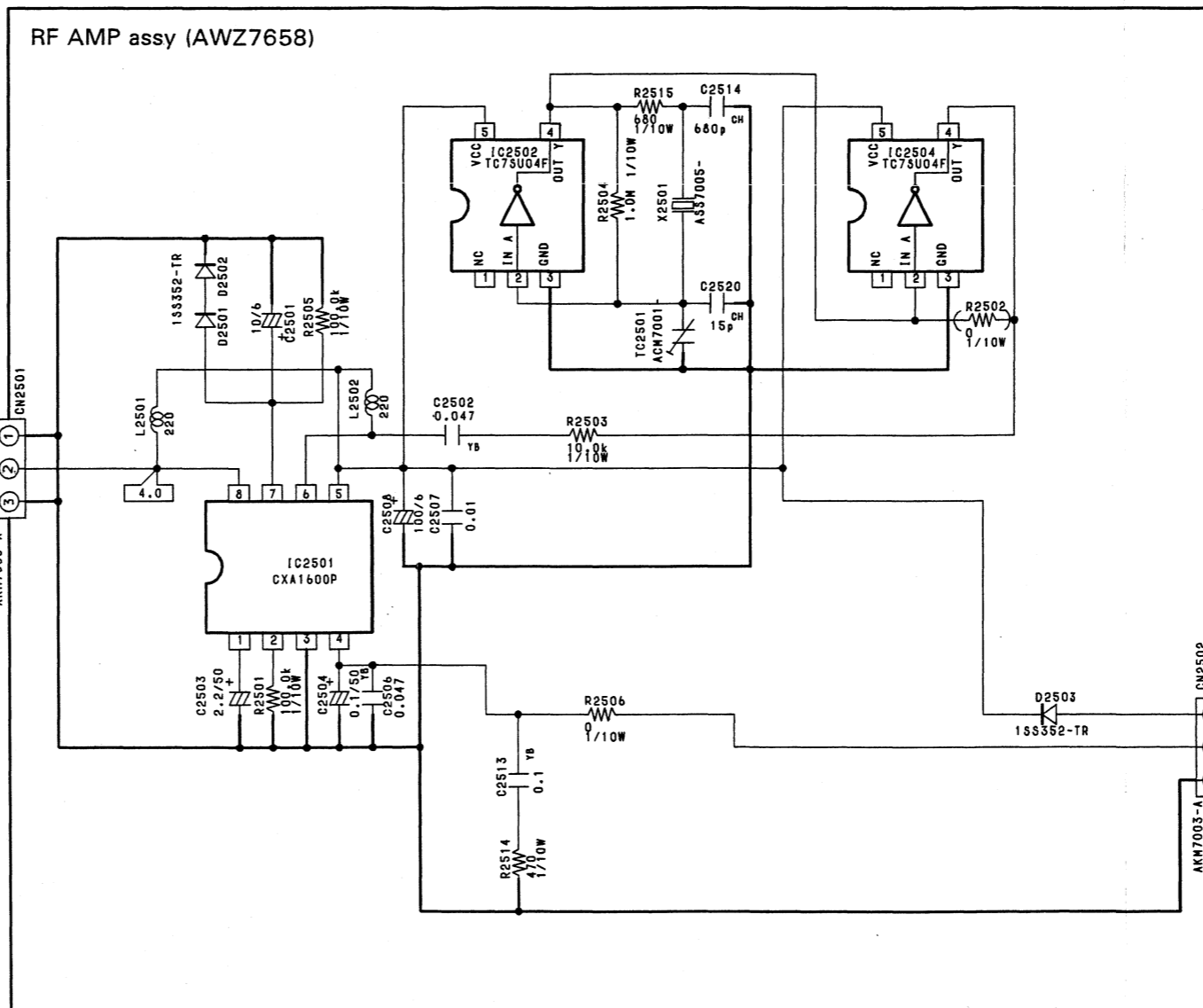
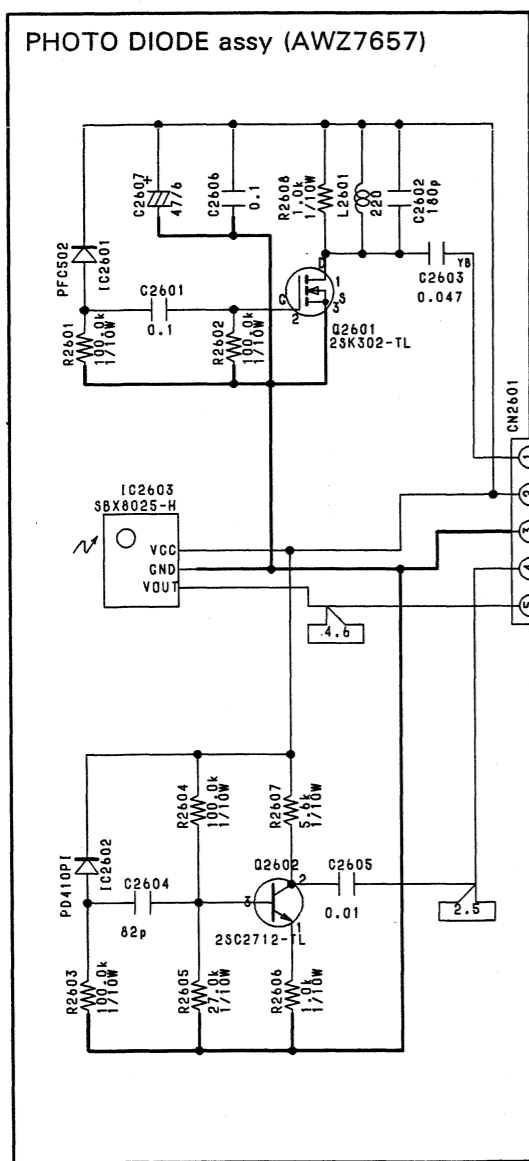
Q1102 IC1102

GUI AND UCOM Assy



To FL AND UCOM Assy CN904
To FL AND UCOM Assy CN905

To PS AND FUNC Assy CN804



To FL AND UCOM assy (→SCH-3F)

To FL AND UCOM assy (→SCH-3F)