

**Pioneer**

# Service Manual

ORDER NO.  
RRV2020

AUDIO/VIDEO MULTI-CHANNEL RECEIVER

# VSX-708RDS

● Refer to the service manual RRV1769 for VSX-806RDS/HYXJI.

THIS MANUAL IS APPLICABLE TO THE FOLLOWING MODEL(S) AND TYPE(S).

Type	Model	Power Requirement	The voltage can be converted by the following method.
	VSX-708RDS		
HYXJI	○	AC220 – 230V	AC240V *
HYXJGR	○	AC220 – 230V	AC240V *

\* : Alter the wiring of the Power-supply block at the primary winding of Power-transformer referring to the "Line Voltage Selection" described in Service Manual.

## CONTENTS

- 1. CONTRAST OF MISCELLANEOUS PARTS ..... 2
- 2. SCHEMATIC DIAGRAM ..... 5
- 3. PCB CONNECTION DIAGRAM ..... 11

**PIONEER ELECTRONIC CORPORATION** 4-1, Meguro 1-Chome, Meguro-ku, Tokyo 153-8654, Japan  
**PIONEER ELECTRONICS SERVICE, INC.** P.O. Box 1760, Long Beach, CA 90801-1760, U.S.A.  
**PIONEER ELECTRONIC (EUROPE) N.V.** Haven 1087, Keetberglaan 1, 9120 Melsele, Belgium  
**PIONEER ELECTRONICS ASIACENTRE PTE. LTD.** 501 Orchard Road, #10-00 Wheelock Place, Singapore 238880  
 ©PIONEER ELECTRONIC CORPORATION 1998

# 1. CONTRAST OF MISCELLANEOUS PARTS

- NOTES:**
- Parts marked by "NSP" are generally unavailable because they are not in our Master Spare Parts List.
  - The  $\triangle$  mark found on some component parts indicates the importance of the safety factor of the part. Therefore, when replacing, be sure to use parts of identical designation.
  - Screws adjacent to  $\blacktriangledown$  mark on product are used for disassembly.
  - Reference Nos. indicate the pages and Nos. in the service manual for the base model.
  - When ordering resistors, first convert resistance values into code form as shown in the following examples.

*Ex.1 When there are 2 effective digits (any digit apart from 0), such as 560 ohm and 47k ohm (tolerance is shown by J=5%, and K=10%).*

560 → 56 x 10<sup>1</sup> → 561 ..... RD1/4PU561J  
 47k → 47 x 10<sup>3</sup> → 473 ..... RD1/4PU473J  
 0.5 → R50 ..... RN2H[R]50K  
 1 → 1R0 ..... RS1P[R]1R0K

*Ex.2 When there are 3 effective digits (such as in high precision metal film resistors).*

5.62k → 562 x 10<sup>1</sup> → 5621 ..... RN1/4PC5621F

## ■ CONTRAST TABLE

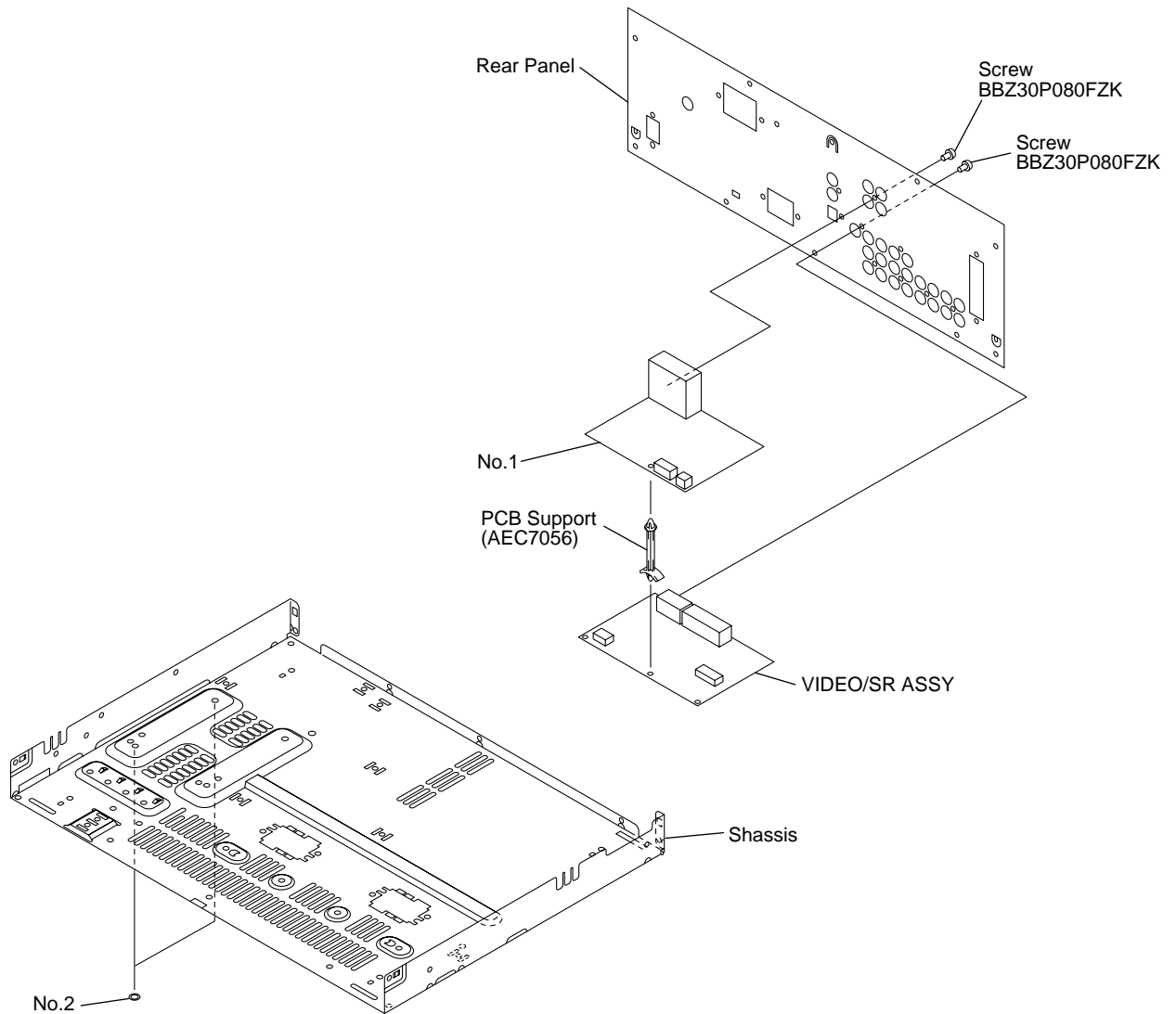
VSX-708RDS/HYXJI, HYXJIGR and VSX-806RDS/HYXJI are constructed the same except for the following :

Ref. No.	Mark	Symbol and Description	Part No.			Remarks
			VSX-806RDS /HYXJI	VSX-708RDS /HYXJI	VSX-708RDS /HYXJIGR	
		<b>ASSEMBLIES</b>				
P6-8	NSP	COMPLEX ASSY	AWK7357	AWK7493	AWK7493	
P6-9		├ VIDEO/SR ASSY	AWZ8845	AWX7269	AWX7269	
		└ VOLUME ASSY	AWZ8844	AWX7268	AWX7268	
P6-10	NSP	FRONT & RC AMP ASSY	AWK7356	AWK7494	AWK7494	
P7-3		├ R/C SPEAKER ASSY	AWZ8629	AWX7270	AWX7270	
		└ FL/U-COM ASSY	AWZ8625	AWX7291	AWX7291	
	NSP	6CH IN ASSY	Not used	AWK7488	AWK7488	No.1
		<b>PACKING</b>				
P3-3		Operating Instructions (English/French/German/Italian)	ARE7100	Not used	Not used	
		Operating Instructions (English/French)	Not used	ARE7186	Not used	
		Operating Instructions (German)	Not used	Not used	ARC7209	
P3-5	NSP	Warranty Card	ARY7009	ARY7022	ARY7022	
P3-8		Operating Instructions (Dutch/Swedish/Spanish/Portuguese)	ARC7163	Not used	Not used	
		Operating Instructions (German/Italian/Spanish)	Not used	ARC7208	Not used	
		Operating Instructions (Dutch/Swedish/Portuguese)	Not used	ARC7225	Not used	
P3-9		Remote Control Unit (CU-VSX118)	AXD7129	Not used	Not used	
P3-9		Remote Control Unit (CU-VSX143)	Not used	AXD7184	AXD7184	
P3-12		Packing Case	AHD7405	AHD7654	AHD7654	
		<b>EXTERIOR</b>				
P6-21		Insulator	PNW1912	PNW2766	PNW2766	
P6-23		Rear Panel	ANC7537	ANC7728	ANC7728	
P6-42		Name Plate	PAM1608	PAM1776	PAM1776	
	NSP	Spacer	Not used	AEB7092	AEB7092	No.2
		<b>FRONT PANEL SECTION</b>				
P7-10		FL Panel	AAK7293	AAK7609	AAK7609	
P7-12		Sub Panel	AAP7027	AAP7055	AAP7055	
P7-13		Front Panel	AMB7422	AMB7554	AMB7554	

- Notes:
- The numbers in the remarks column correspond to the numbers on "EXPLODED VIEWS".
  - For ASSEMBLIES, refer to "CONTRAST OF PCB ASSEMBLIES" and "2. SCHEMATIC DIAGRAM".

■ EXPLODED VIEWS

● EXTERIOR SECTION



■ CONTRAST OF PCB ASSEMBLIES

**AF** FL/U-COM ASSY

AWX7291 and AWZ8625 are constructed the same except for the following :

Mark	Symbol and Description	Part No.		Remarks
		AWZ8625	AWX7291	
	IC901	PDG203A	PDG233A	
	Q952	2SA1115	2SA1993	
	D901- D912, D914- D918, D923, D924	1SS252	1SS254	
	R927, R928	Not used	RD1/4PU103J	
	J13	D15A07-600-2651	D15A10-600-2651	

**I F VOLUME ASSY**

AWX7268 and AWZ8844 are constructed the same except for the following :

Mark	Symbol and Description	Part No.		Remarks
		AWZ8844	AWX7268	
Q705, Q706 D701, D703, D705 C709, C710 C713 C716  C717 C9060, C9061 R713 R715 R717  J20		2SA1115	2SA1993	
		1SS252	1SS254	
		CKPUYB151K50	CCPUSL680J50	
		Not used	CEAT4R7M50	
		CKPUYB101K50	CCPUSL470J50	
		Not used	CEAT220M50	
		Not used	CEAT100M50	
		Not used	RD1/4PU104J	
		Not used	RD1/4PU272J	
		Not used	RD1/4PU103J	
		D15A15-300-2651	D15A15-400-2651	

**J F R/C SPEAKER ASSY**

AWX7270 and AWZ8629 are constructed the same except for the following :

Mark	Symbol and Description	Part No.		Remarks
		AWZ8629	AWX7270	
D151- D154 R156 R179		1SS252	1SS254	
		RD1/4PU751J	RD1/4PU122J	
		Not used	RD1/4PU272J	

**L F VIDEO/SR ASSY**

AWX7269 and AWZ8845 are constructed the same except for the following :

Mark	Symbol and Description	Part No.		Remarks
		AWZ8845	AWX7269	
D801, D802, D851- D853 CN802 J24 1891 CABLE HOLDER(9P)		1SS252	1SS254	
		KPE7	KPE10	
		Not used	D15A03-100-2651	
		Not used	51063-0905	

**PCB PARTS LIST**

Mark	No.	Description	Part No.	Mark	No.	Description	Part No.
------	-----	-------------	----------	------	-----	-------------	----------

**P F 6CH IN ASSY**

**SEMICONDUCTORS**

IC101, IC102	NJM2058D
IC103, IC104	TC4053BP
D101, D102	MTZJ6.2B

**CAPACITORS**

C109-C112	CEAT2R2M50
C119-C122, C141, C142	CEAT470M16
C127-C130, C135-C138	CEAT4R7M50
C113, C114, C123-C126	CGCYX473M25
C139, C140, C165	CGCYX473M25

C106-C108	CKPUYB101K50
C144, C145	CKPUYB102K50
C115-C118	CKPUYB331K50
C143	CKPUYB681K50
C101, C105	CKPUYF473Z16

**RESISTORS**

All Resistors	RD1/4PU□□□J
---------------	-------------

**OTHERS**

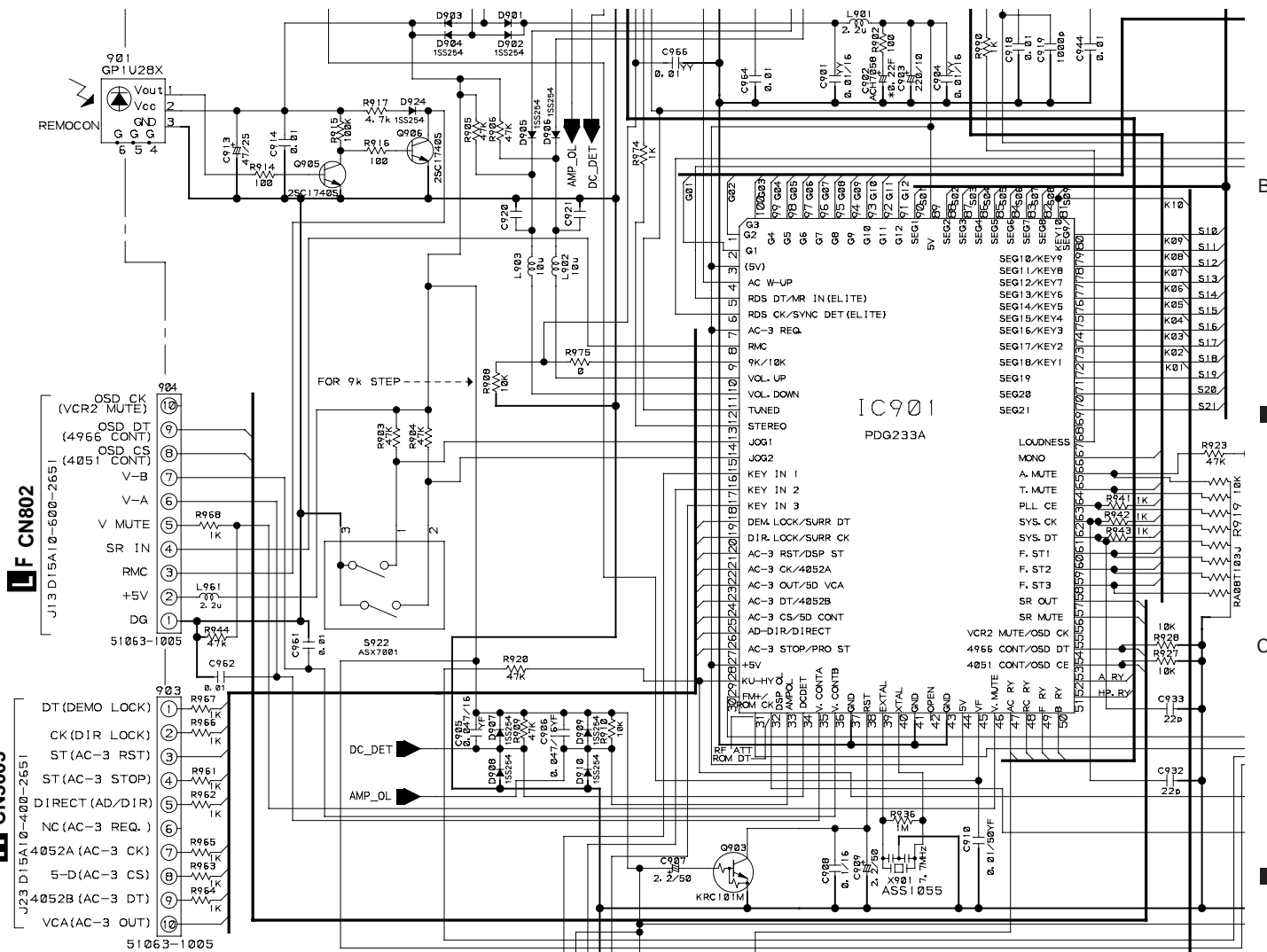
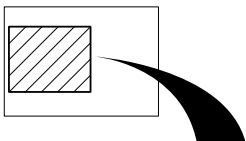
102	15P CABLE HOLDER	51063-1505
CN103	PIN JACK(4P)	AKB7087
J20	JUMPER WIRE	D15A15-150-2651
CN101	CONNECTOR(15P)	KPE15
CN104	CONNECTOR(3P)	KPE3

## 2. SCHEMATIC DIAGRAM

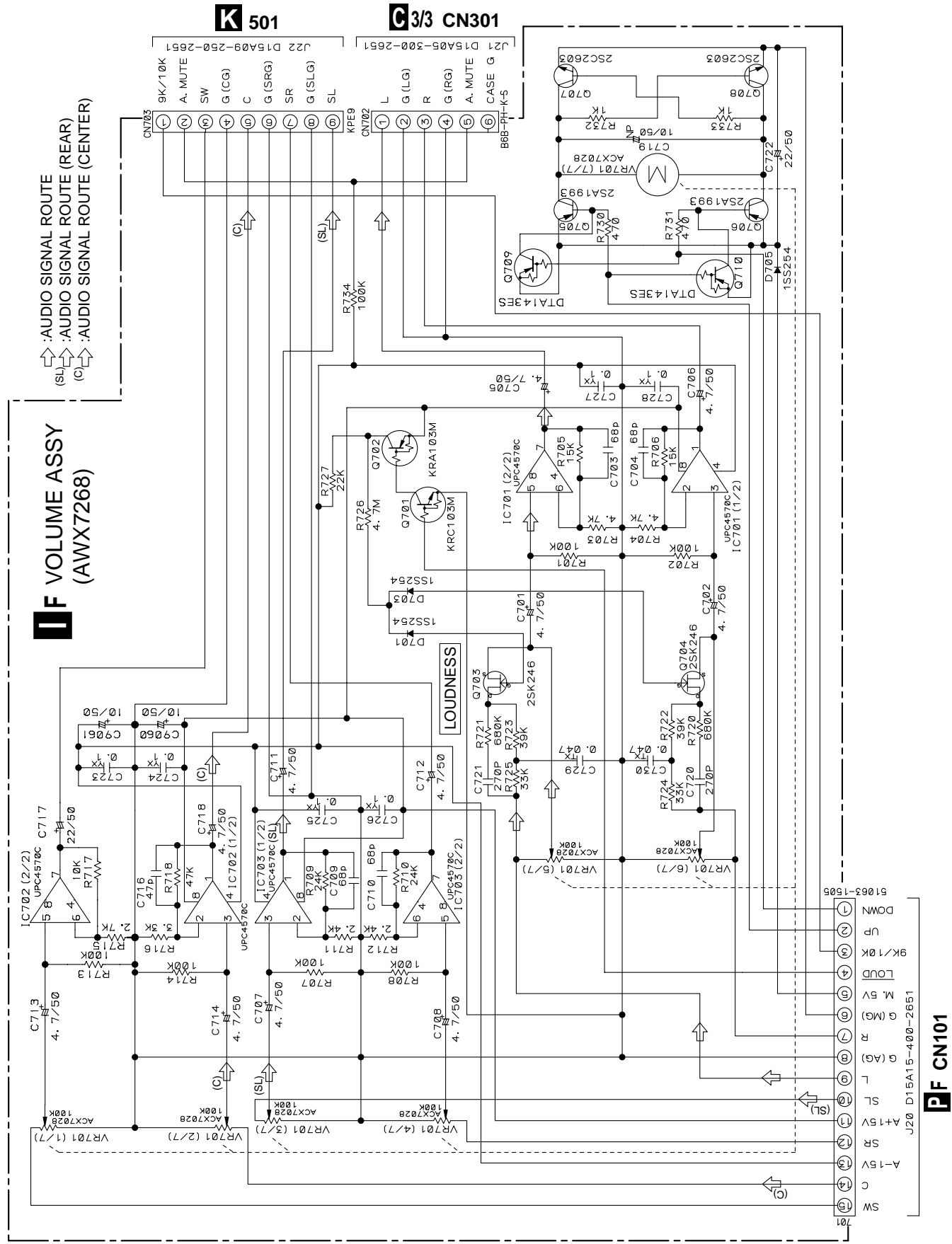
Note : When ordering service parts, be sure to refer to "EXPLODED VIEWS and PARTS LIST" or "PCB PARTS LIST"

### 2.1 FL/U-COM ASSY

#### AF FL/U-COM ASSY (AWX7291)



2.2 VOLUME ASSY



**VOLUME ASSY (AWX7268)**

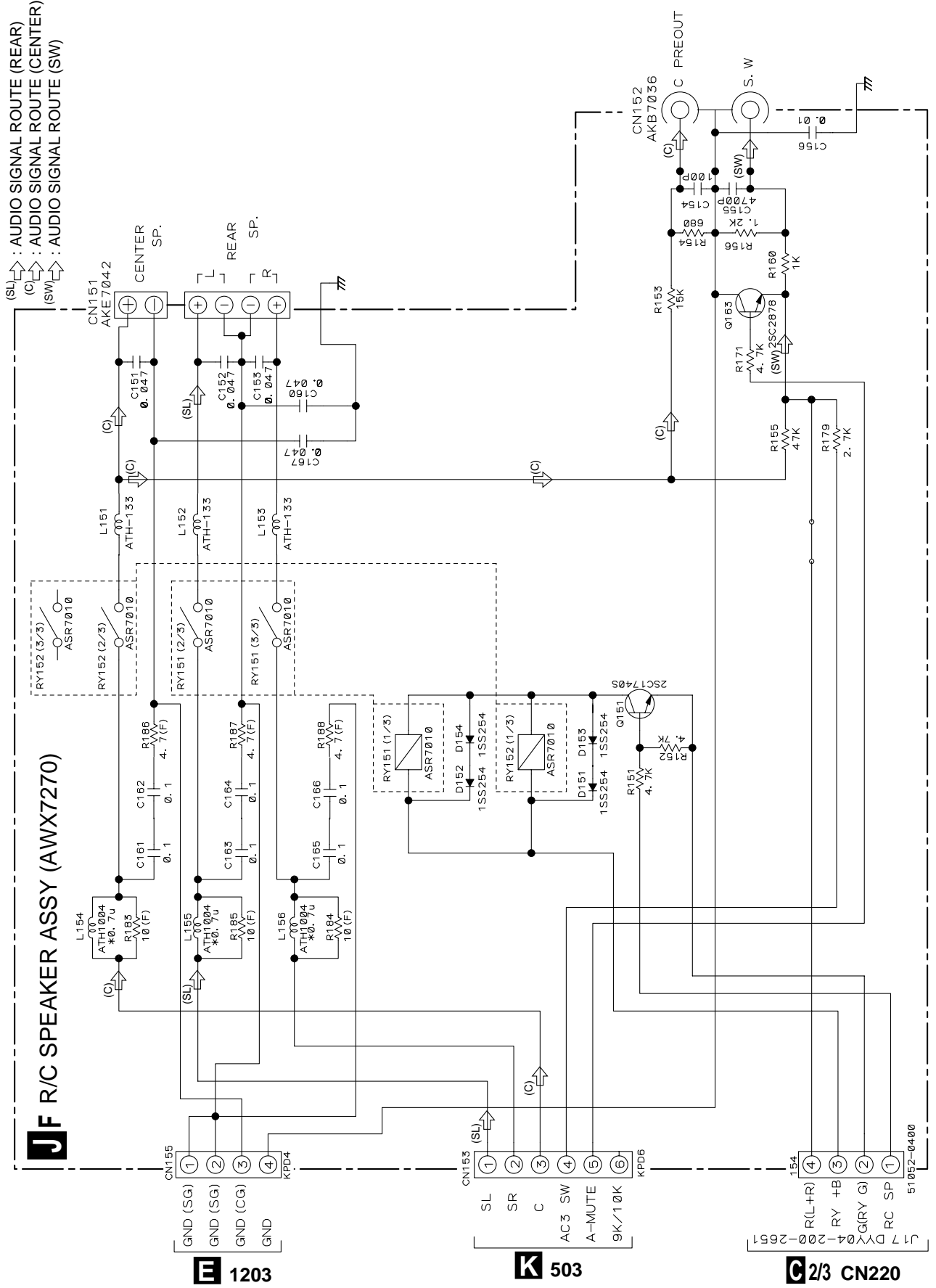
↑: AUDIO SIGNAL ROUTE (REAR)  
 (SL) ↑: AUDIO SIGNAL ROUTE (CENTER)  
 (C) ↑: AUDIO SIGNAL ROUTE (CENTER)

**PF CN101**

**K 501**

**G3/3 CN301**

### 2.3 R/C SPEAKER ASSY



**JF** R/C SPEAKER ASSY (AWX7270)

(SL) : AUDIO SIGNAL ROUTE (REAR)  
 (C) : AUDIO SIGNAL ROUTE (CENTER)  
 (SW) : AUDIO SIGNAL ROUTE (SW)

**E** 1203

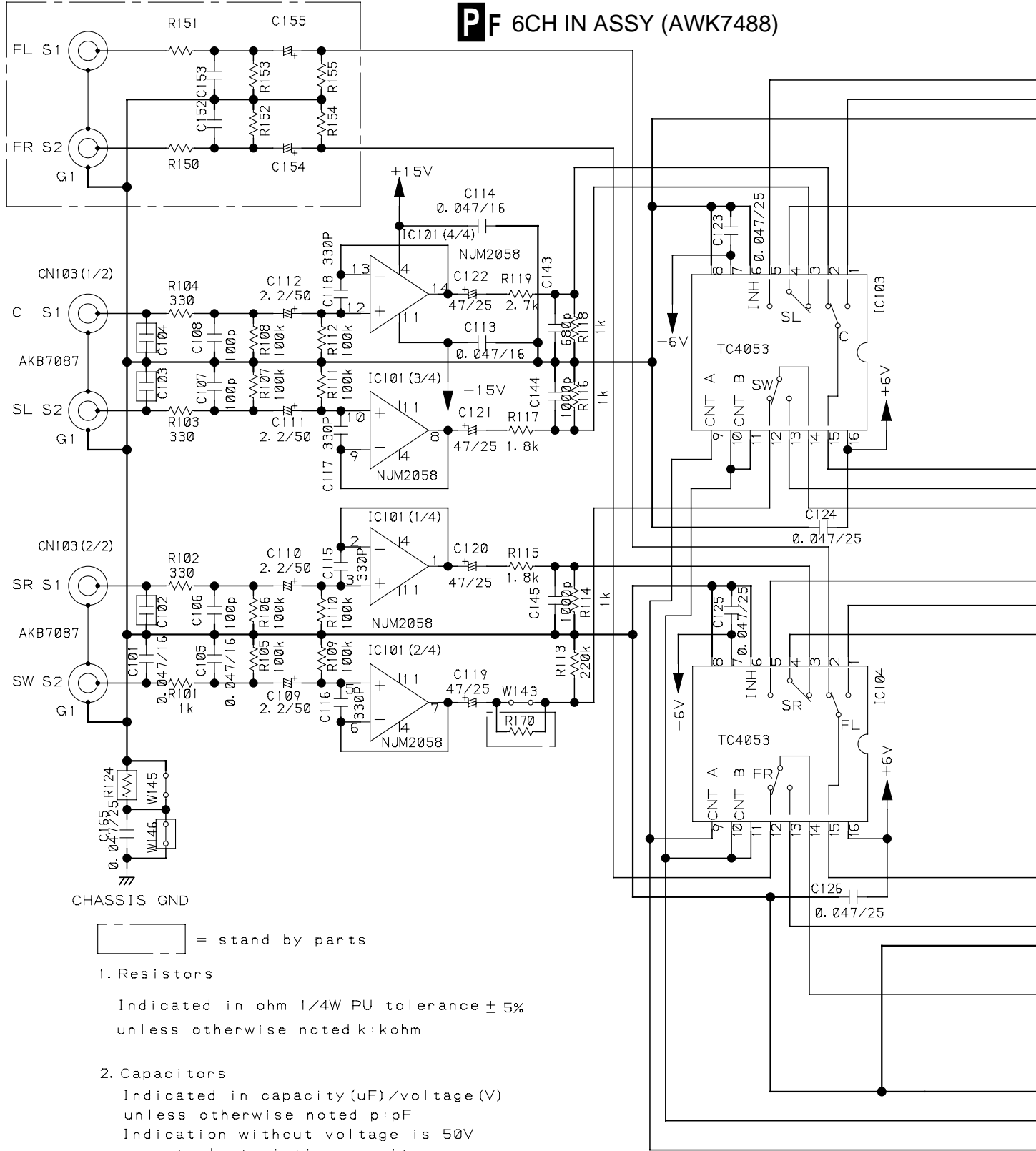
**K** 503

**C** 2/3 CN220

**JF**

2.4 6CH IN ASSY

**P**F 6CH IN ASSY (AWK7488)



CHASSIS GND

= stand by parts

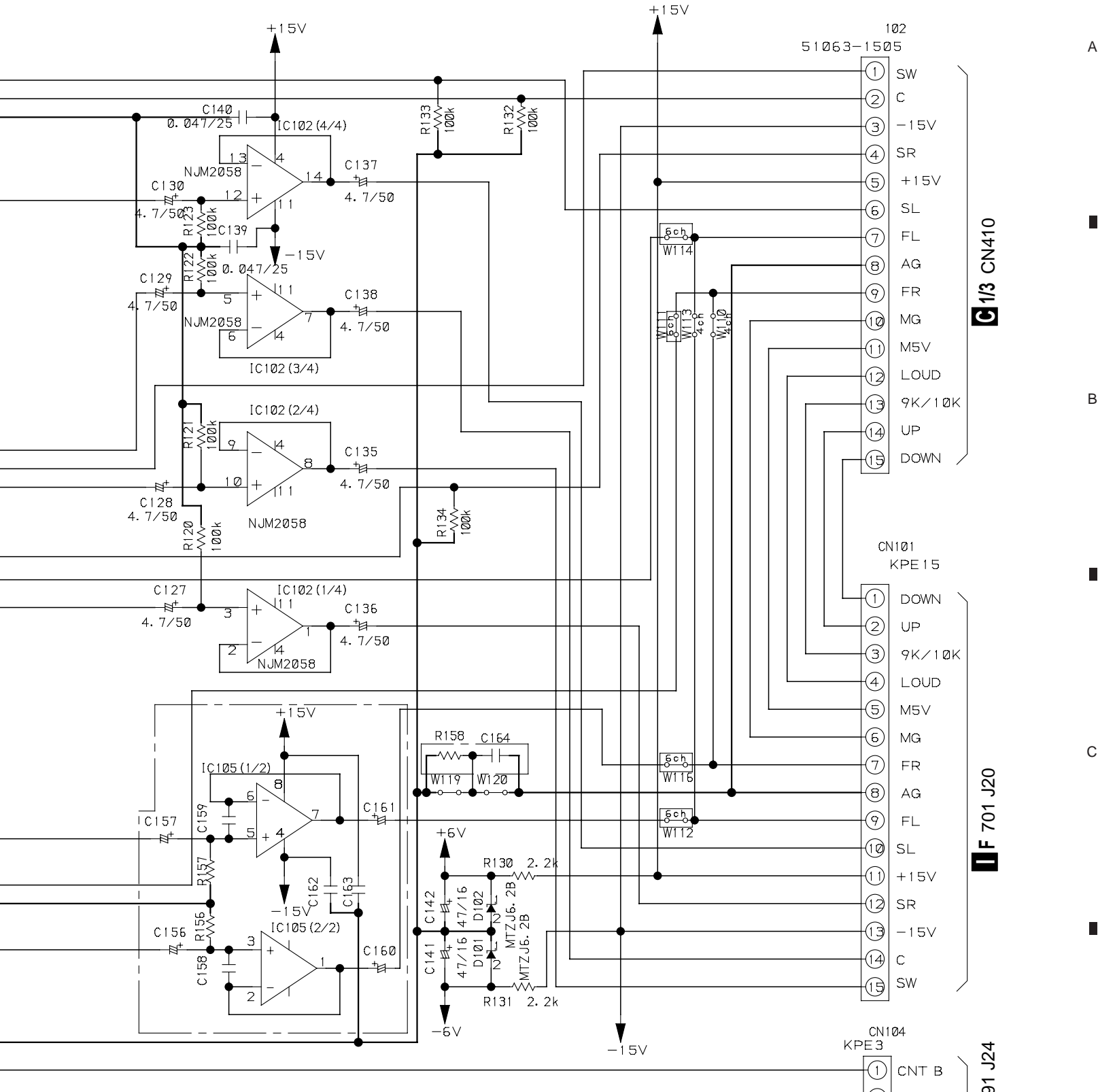
1. Resistors

Indicated in ohm 1/4W PU tolerance  $\pm 5\%$   
 unless otherwise noted k:kohm

2. Capacitors

Indicated in capacity ( $\mu$ F)/voltage (V)  
 unless otherwise noted p:pF  
 Indication without voltage is 50V  
 except electrolytic capacitor





4053 CONTROL

CNT A	CNT B	MODE
L	H	DVD 5.1ch MODE
H	L	OTHER MODE

**C** 1/3 CN410

**F** 701 J20

**F** 1891 J24



2.5 VIDEO/SR ASSY

A

B

C

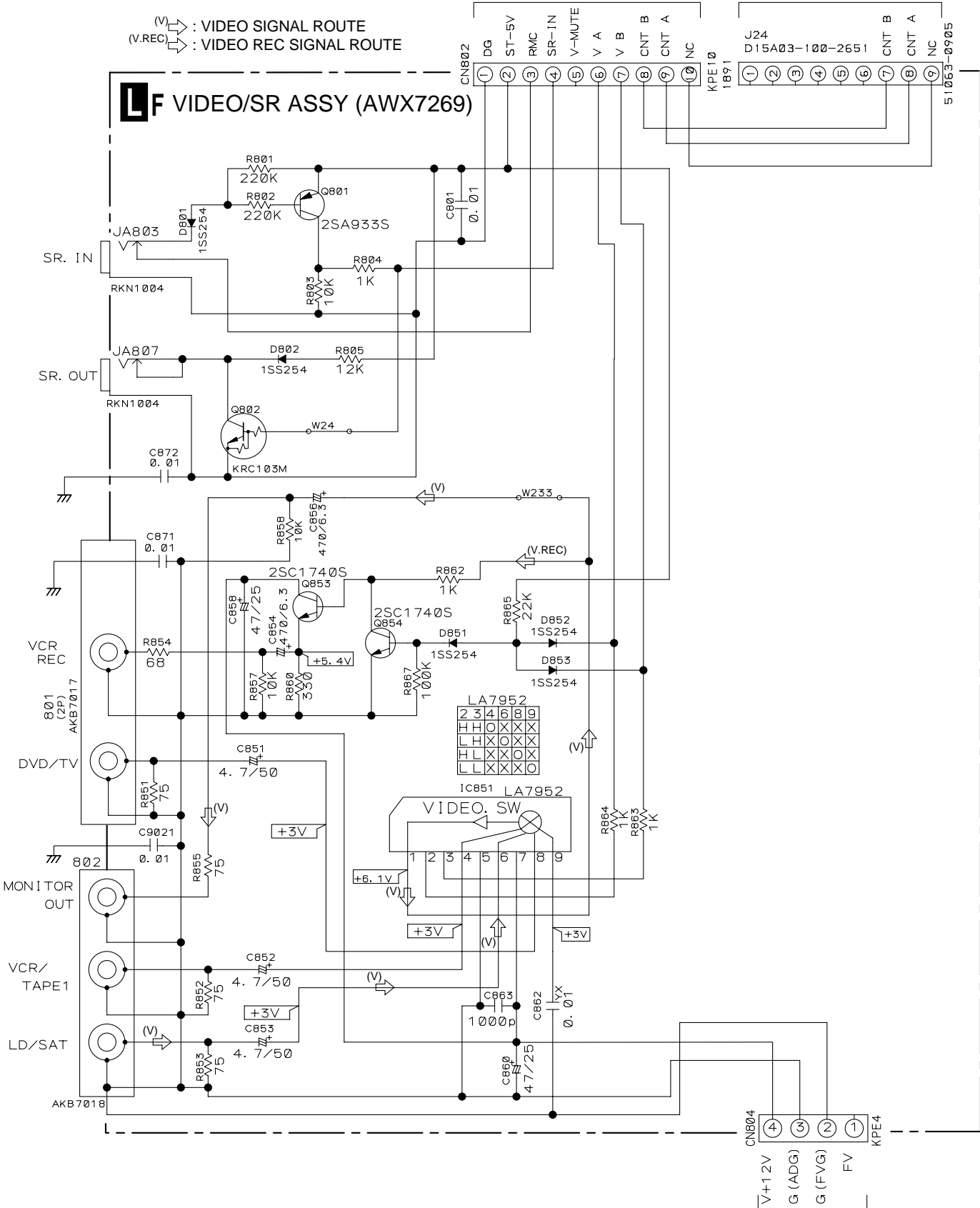
D

AF 904 J13

PF CN104

(V) : VIDEO SIGNAL ROUTE  
 (V.REC) : VIDEO REC SIGNAL ROUTE

LF VIDEO/SR ASSY (AWX7269)



C 1/3 412

# 3. PCB CONNECTION DIAGRAM

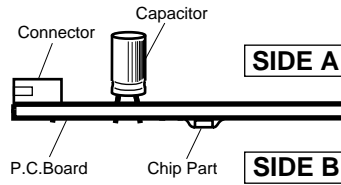
### NOTE FOR PCB DIAGRAMS:

- 1. Part numbers in PCB diagrams match those in the schematic diagrams.
- 2. A comparison between the main parts of PCB and schematic diagrams is shown below.

Symbol in PCB Diagrams	Symbol in Schematic Diagrams	Part Name
		Transistor
		Transistor with resistor
		Field effect transistor
		Resistor array
		3-terminal regulator

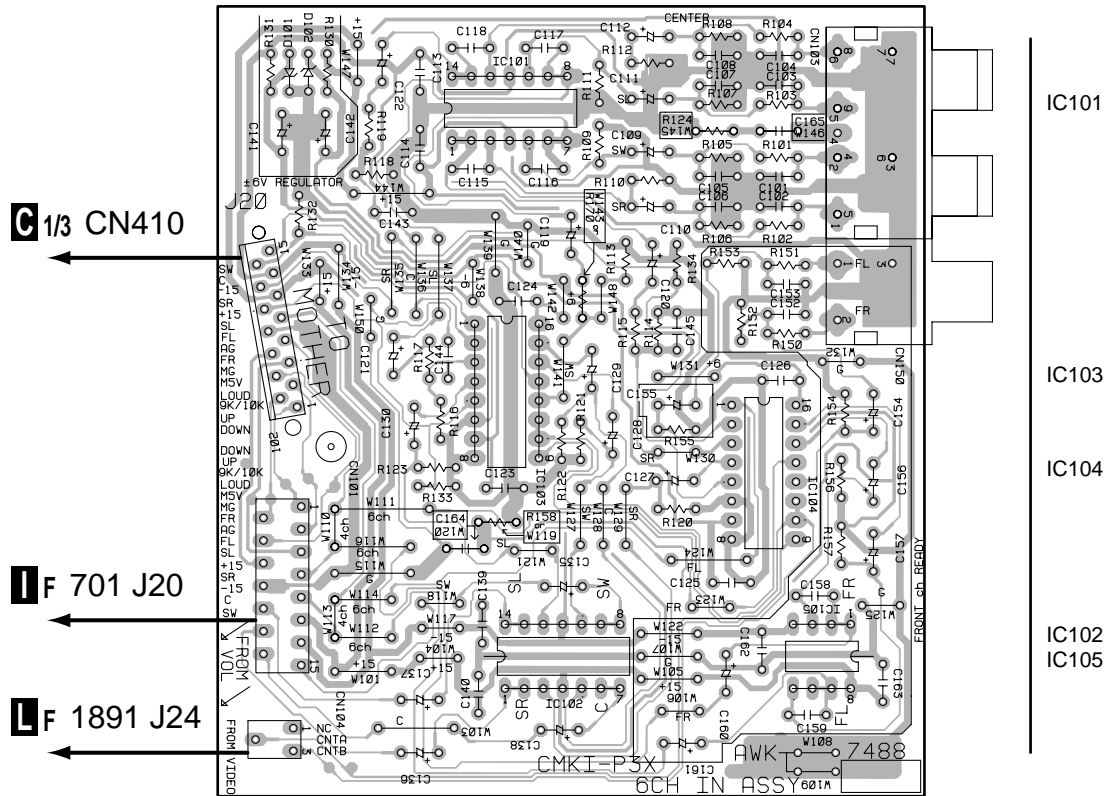
- 3. The parts mounted on this PCB include all necessary parts for several destination.
- For further information for respective destinations, be sure to check with the schematic diagram.

### 4. Viewpoint of PCB diagrams



## 3.1 6CH IN ASSY

### PF 6CH IN ASSY



(ANP7265-A)

**SIDE A**