

## Service Manual

ORDER NO.  
**RRV4531**

**AV Receiver**

# VSX-924-K VSX-924-S

**THIS MANUAL IS APPLICABLE TO THE FOLLOWING MODEL(S) AND TYPE(S).**

Model	Type	Power Requirement	Remarks
VSX-924-K	SYXE8	AC 220 V to 230 V	
VSX-924-S	SYXE8	AC 220 V to 230 V	

**This service manual should be used together with the following manual(s).**

Model No.	Order No.	Remarks
VSX-1124-K/CUXESM	RRV4521	
VSX-1124-K, VSX-1129-K, VSX-80, VSA-1124	RRV4527	SCHEMATIC DIAGRAM, PCB CONNECTION DIAGRAM, PCB PARTS LIST

**For SPECIFICATIONS and PANEL FACILITIES, refer to the operating instructions.**

# 1. CONTRAST OF MISCELLANEOUS PARTS

NOTES: ● Parts marked by "NSP" are generally unavailable because they are not in our Master Spare Parts List.

● The ⚠ mark found on some component parts indicates the importance of the safety factor of the part.

Therefore, when replacing, be sure to use parts of identical designation.

● Screws adjacent to ▼ mark on product are used for disassembly.

● For the applying amount of lubricants or glue, follow the instructions in this manual.

(In the case of no amount instructions, apply as you think it appropriate.)

● Nos. indicate the pages and Nos. in the service manual for the base model.

● When ordering resistors, first convert resistance values into code form as shown in the following examples.

Ex.1 When there are 2 effective digits (any digit apart from 0), such as 560 ohm and 47k ohm (tolerance is shown by J=5%, and K=10%).

560Ω → 56 x 10<sup>1</sup> → 561 ..... RD1/4PU561J

47kΩ → 47 x 10<sup>3</sup> → 473 ..... RD1/4PU473J

0.5Ω → R50 ..... RN2HR50K

1Ω → 1R0 ..... RS1P1R0K

Ex.2 When there are 3 effective digits (such as in high precision metal film resistors).

5.62kΩ → 562 x 10<sup>1</sup> → 5621 ..... RN1/4PC5621F

## CONTRAST TABLE

VSX-1124-K/CUXESM, VSX-924-K/SYXE8 and VSX-924-S/SYXE8 are constructed the same except for the following:

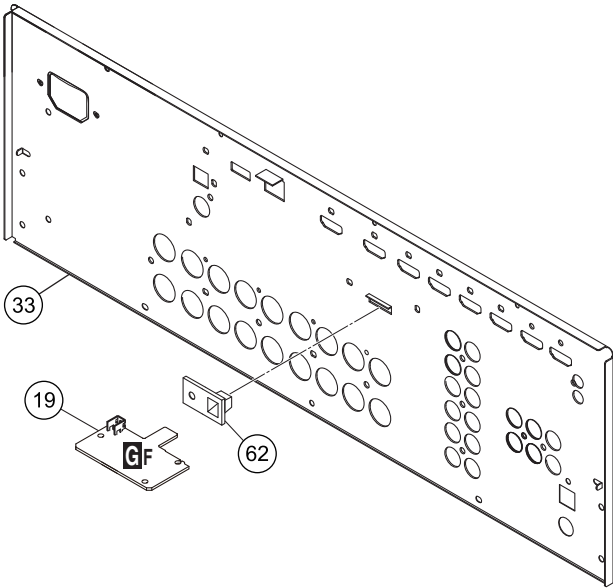
Mark	No.	Symbol and Description	VSX-1124-K /CUXESM	VSX-924-K /SYXE8	VSX-924-S /SYXE8	Remarks
<b>PCB ASSEMBLIES</b>						
NSP		1..PCB TTL ASSY MAIN	7025HK1307010	7025HK1308010	7025HK1308020	
	P54-1	2..MAIN Assy	7028074711030	7028074711020	7028074711020	
	P54-2	2..BRIDG Assy	7028074712010	7028074712020	7028074712020	
	P54-6	2..BT-CNT Assy	7028074716010	7028074716020	7028074716020	
NSP	P54-7	2..TEMP Assy	7028074717010	7028074717020	7028074717020	
NSP		1..PCB TTL ASSY DMAIN	7025HK1307012	7025HK1308012	7025HK1308022	
	P54-8	2..DMAIN ASSY	7028074771010	7028074771020	7028074771020	
NSP		1..PCB TTL ASSY FRONT	7025HK1307011	7025HK1308011	7025HK1308021	
	P54-9	2..FRONT ASSY	7028074721030	7028074721020	7028074721020	
	P54-10	2..HPMIC ASSY	7028074722010	7028074722020	7028074722020	
	P54-12	2..OPTCO ASSY	7028074724010	7028074724020	7028074724020	
NSP		1..PCB TTL ASSY CPU	7025HK1307013	7025HK1308013	7025HK1308023	
	P54-13	2..CPU ASSY	7028074731030	7028074731020	7028074731020	
	P54-14	2..VIDEO ASSY	7028074732030	7028074732020	7028074732020	
NSP		1..PCB TTL ASSY AUDIO	7025HK1307015	7025HK1308015	7025HK1308025	
	P54-15	2..AUDIO ASSY	7028074741010	7028074741020	7028074741020	
NSP		1..PCB TTL ASSY AMP7	7025HK1307014	7025HK1308014	7025HK1308024	
	P54-16	2..AMP7 ASSY	7028074751010	7028074751020	7028074751020	
NSP		1..PCB TTL ASSY SMPS	7025HK1307016	7025HK1308016	7025HK1308026	
	⚠ P54-17	2..SMPS ASSY	702807336108A	702807336105A	702807336105A	
NSP		1..PCB TTL ASSY FHDMI	7025HK1307017	7025HK1308017	7025HK1308027	
	P54-18	2..FHDMI ASSY	7028074581040	7028074581050	7028074581050	
NSP		1..PCB TTL ASSY BT	7025HK1307018	Not used	Not used	
	P54-19	2..BT ASSY	70280732110L0	Not used	Not used	
NSP		1..PCB TTL ASSY IN BT	Not used	7025HK1308018	7025HK1308028	
	P54-19	2..INNER BT ASSY	Not used	7028074551030	7028074551030	
<b>PACKING SECTION</b>						
	P51-5	CD-ROM	6517000001640S	6517000001670S	6517000001670S	
NSP		Operating Instructions_VSX-1124 (En)(pdf)	ARB7552	Not used	Not used	
NSP		Operating Instructions_VSX-1124 (Frca)(pdf)	ARC8325	Not used	Not used	
NSP		Operating Instructions_VSX-1124 (Es)(pdf)	ARC8326	Not used	Not used	
NSP		Operating Instructions_VSX-924 (En)(pdf)	Not used	ARB7555	ARB7555	
NSP		Operating Instructions_VSX-924 (Fr)(pdf)	Not used	ARC8329	ARC8329	
NSP		Operating Instructions_VSX-924 (Es)(pdf)	Not used	ARC8330	ARC8330	

Mark	No.	Symbol and Description	VSX-1124-K /CUXESM	VSX-924-K /SYXE8	VSX-924-S /SYXE8	Remarks
NSP		Operating Instructions_VSX-924 (De)(pdf)	Not used	ARC8331	ARC8331	A
NSP		Operating Instructions_VSX-924 (It)(pdf)	Not used	ARC8332	ARC8332	
NSP		Operating Instructions_VSX-924 (NI)(pdf)	Not used	ARC8333	ARC8333	
NSP		Operating Instructions_VSX-924 (Ru)(pdf)	Not used	ARC8334	ARC8334	
	P51-6	Quick Start Guide	5707000008850S	5707000008880S	5707000008880S	
	P51-7	Box	6007212390070S	6007212390090S	60072123900A0S	
NSP	P51-10	Warranty Sheet	ARY7172	ARY7158	ARY7158	
⚠	P51-12	Power Cord	Not used	L068250160020-IL	L068250160020-IL	
		<b>EXTERIOR SECTION</b>				
⚠	P54-20	Power Trans	8200960611510S	8200960611520S	8200960611520S	B
⚠	P54-21	Cord Assy	L068125101710-IL	Not used	Not used	
⚠	P54-22	Socket, Power AC	Not used	G430040560021-IL	G430040560021-IL	
	P54-30	Pioneer Badge B	XAM3006	XAM3006	Not used	
	P54-30	Pioneer Name Plate	Not used	Not used	VAM1129	
	P54-31	Cabinet Assy	3008211846020-IL	3008211846020-IL	3008211846010-IL	
	P54-32	Panel	3067216111300S	3067216111410S	3067216111500S	
	P54-33	Back chassis	3207214856200S	3207214856000S	3207214856010S	
	P54-35	Foot	4000210391000-IL	4007210391000-IL	4007210391000-IL	
	P54-42	Stopper	4380040162010-IL	Not used	Not used	
	P54-44	Knob	5080212431000-IL	5080212431000-IL	5087212431200-IL	
	P54-45	Button	5090213741100-IL	5090213741100-IL	5097213741000-IL	
	P54-46	5 Key Button	5090214561000-IL	5090214561000-IL	5097214561100-IL	C
		BT Cover	Not used	4310216061000S	4310216061000S	
						No. 62

Notes : The numbers in the remarks column correspond to the numbers on the “EXPLODED VIEWS”.  
For PCB ASSEMBLIES, Refer to “CONTRAST OF PCB ASSEMBLIES”, “PCB PARTS LIST”, “3. SCHEMATIC DIAGRAM” and “4. PCB CONNECTION DIAGRAM”.

## EXPLODED VIEWS

### EXTERIOR SECTION



## CONTRAST OF PCB ASSEMBLIES

### A F MAIN ASSY

7028074711030 and 7028074711020 are constructed the same with the exception of some components, including the following:

Mark	Symbol and Description	7028074711030	7028074711020	Remarks
	JACK50 TUNER,FM/AM	E903004100781S	E903104100781S	

Note: This list is not complete. Only components that are available as service part are listed!

### B F TEMP ASSY

Although 7028074717010 and 7028074717020 are different and are NOT COMPATIBLE! Some components on these assy's are different. Since these different components are not available as service part, they are not listed.

### C F D-MAIN ASSY

7028074771010 and 7028074771020 are constructed the same with the exception of some components, including the following:

Mark	Symbol and Description	7028074771010	7028074771020	Remarks
⚠	IC9405	NJM2819ADL3-05	Not used	

Note: This list is not complete. Only components that are available as service part are listed!

### D F OPTCO ASSY

Although 7028074724010 and 7028074724020 are different and are NOT COMPATIBLE! Some components on these assy's are different. Since these different components are not available as service part, they are not listed.

### E F BRIDG ASSY

7028074712010 and 7028074712020 are constructed the same with the exception of some components, including the following:

Mark	Symbol and Description	7028074712010	7028074712020	Remarks
	IC2700	Not used	J040140940030S	

The mounting positions of the additional parts are described in the circuit diagram and PCB diagram of the parent manual.

Note: This list is not complete. Only components that are available as service part are listed!

### F F VIDEO ASSY

Although 7028074732030 and 7028074732020 are different and are NOT COMPATIBLE! Some components on these assy's are different. Since these different components are not available as service part, they are not listed.

### D H F BT-CNT ASSY

7028074716010 and 7028074716020 are constructed the same with the exception of some components, including the following:

Mark	Symbol and Description	7028074716010	7028074716020	Remarks
	CN603 CN,WAFER	L109012511140S	L109012511340S	

Note: This list is not complete. Only components that are available as service part are listed!

### I F AUDIO ASSY

Although 7028074741010 and 7028074741020 are different and are NOT COMPATIBLE! Some components on these assy's are different. Since these different components are not available as service part, they are not listed.

### E J F CPU ASSY

Although 7028074731030 and 7028074731020 are different and are NOT COMPATIBLE! Some components on these assy's are different. Since these different components are not available as service part, they are not listed.

### K F AMP7 ASSY

Although 7028074751010 and 7028074751020 are different and are NOT COMPATIBLE! Some components on these assy's are different. Since these different components are not available as service part, they are not listed.

### L F FHDMI ASSY

7028074581040 and 7028074581050 are constructed the same with the exception of some components, including the following:

Mark	Symbol and Description	7028074581040	7028074581050	Remarks
⚠	IC2021	NJM2819ADL3-515H	Not used	

Note: This list is not complete. Only components that are available as service part are listed!

## O F HPMIC ASSY

Although 7028074722010 and 7028074722020 are different and are NOT COMPATIBLE! Some components on these assy's are different. Since these different components are not available as service part, they are not listed.

## N F FRONT ASSY

7028074721030 and 7028074721020 are constructed the same with the exception of some components, including the following:

Mark	Symbol and Description	7028074721030	7028074721020	Remarks
⚠	FU3041(R3041), FU3042(R3042) MICRO FUSE	Not used	G659102121030S	
⚠	R3041, R3042	C0603R3065050S	Not used	
	R3025, R3026	Jumper	C060R47065050-IL	
	R67	Not used	C060047063050-IL	

The mounting positions of the additional parts are described in the circuit diagram and PCB diagram of the parent manual.

Note: This list is not complete. Only components that are available as service part are listed!

## P F SMPS ASSY

702807336108A and 702807336105A are constructed the same with the exception of some components, including the following:

Mark	Symbol and Description	702807336108A	702807336105A	Remarks
⚠	FU101 FUSE GLASS TUBE 20mm (T8AL/250V)	N751508001160-IL	Not used	
⚠	FU101 FUSE GLASS TUBE 20mm (T6.3AL/250V)	Not used	N751506301160-IL	

Note: This list is not complete. Only components that are available as service part are listed!

## PCB PARTS LIST

**Mark No. Description Part No.**

### G F INNER BT ASSY

#### SEMICONDUCTORS

IC 632	J121210080010S
⚠ IC 634	J126288833010S

#### CAPACITORS

C 655	D040102081070-IL
-------	------------------

## 2. DIAGNOSIS

### 2.1 Pairing this unit and Bluetooth wireless technology device

#### Pairing with the unit (Initial registration)

In order for the unit to playback music stored on a Bluetooth capable device, pairing must first be performed. Pairing should be performed when first using the unit with the Bluetooth capable device, or when the pairing data on the device has been erased for any reason. Pairing is a step required to allow communication using Bluetooth wireless technology to be carried out.

- Pairing is performed the first time that you use the unit and the Bluetooth capable device together.
- In order to allow communication using Bluetooth wireless technology to take place, pairing must be performed on both the unit and the Bluetooth capable device.
- After pressing the **BT ADPT** and switching to **BT AUDIO** input, perform the pairing procedure on the Bluetooth capable device. If pairing has been performed correctly, you will not need to perform the pairing procedures for the unit as shown below.

Please refer to the user's manual for your Bluetooth capable device for more details.

**1 Press  STANDBY/ON and turn the power to the unit on.**

**2 Press BT ADPT.**

The unit switches to **BT AUDIO** and **WAITING DEVICE** will be displayed on the front panel of the unit.

**3 Turn on the power to the Bluetooth capable device that you wish to pair with, and perform pairing procedure on it.**

Pairing will start.

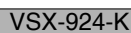
- Place the Bluetooth capable device close to the unit.
- Please refer to the user's manual for your Bluetooth capable device for details on when pairing can be performed and the procedures required for pairing.
- When PIN code entry is requested, enter **0000**. (This unit does not accept any PIN code setting other than **0000**.)

**4 Confirm on the Bluetooth capable device that pairing has been completed.**

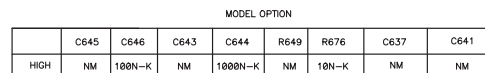
If pairing with the Bluetooth capable device has been completed correctly, **CONNECTED** will be displayed on the front panel of the unit.

## 4

F



INNER BT	BT_READY
NC	BT_/OC
KEY6	BT_RX/U/_TX
KEY4	BT_TX/U/_RX
KEY3	BT_DET
KEY2	BT_+5V
BT_+5V	BT_ID
KEY1	CPU_GND
CPU_GND	BT_ON/CE
BT_ON/CE	BT_L
BT_L	AGND
BT_R	BT_R



(MODULE KEY CONTROL)			S : Short Key , L : Long Key				
		KEY1	KEY2	KEY3	KEY4	KEY5	KEY6
PLAY		S					
PAUSE		S					
STOP		L					
FF			L				
FR				L			
FWD SKIP			S				
REV SKIP				S			
PAIRING MODE		S					
BT STATE	READY				L	L	
	PAIRING				L	H	
	CONNECTED				H	L	
	PLAYING				H	H	
DEC OPEN/CLOSE							OPEN-->H CLOSE-->L
			MAIN ---> BT			BT ---> MAIN	

ONLY SYXE8

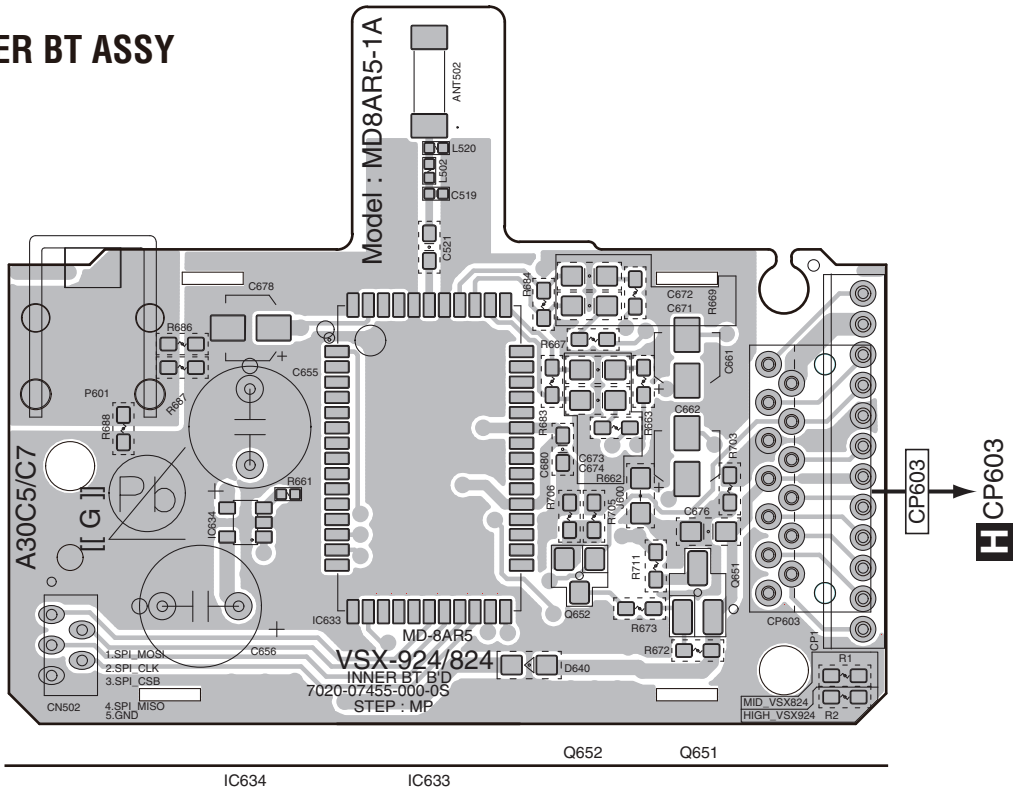
4. PCB CONNECTION DIAGRAM

4.1 INNER BT ASSY

SIDE A

SIDE A

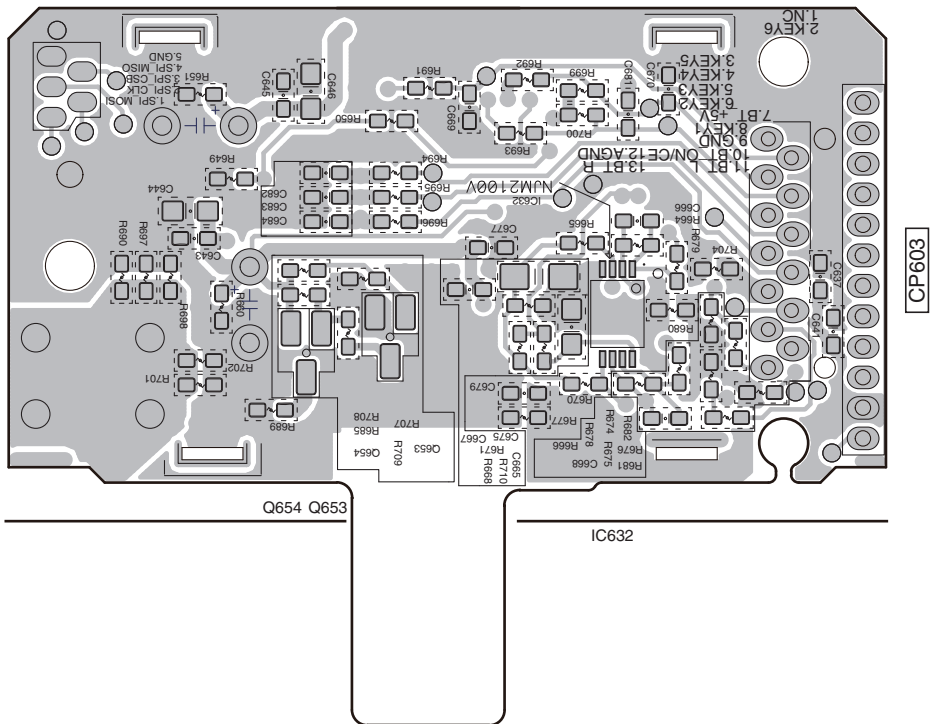
GF INNER BT ASSY



SIDE B

SIDE B

GF INNER BT ASSY



GF

GF