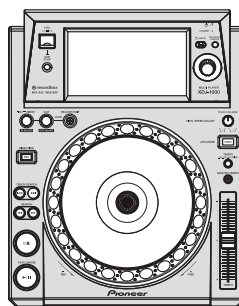


Pioneer

Service Manual



XDJ-1000

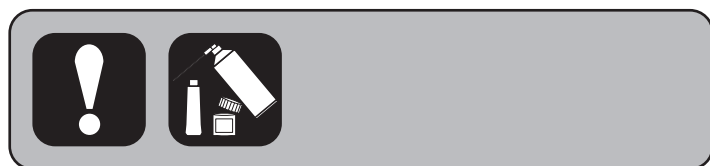
ORDER NO.
RRV4582

MULTI PLAYER

XDJ-1000

THIS MANUAL IS APPLICABLE TO THE FOLLOWING MODEL(S) AND TYPE(S).

Model	Type	Power Requirement	Remarks
XDJ-1000	SYXJ8	AC 110 V to 240 V	
XDJ-1000	UXJCB	AC 110 V to 240 V	
XDJ-1000	FLXJ	AC 110 V to 240 V	
XDJ-1000	AXJ5	AC 110 V to 240 V	



PIONEER CORPORATION 1-1, Shin-ogura, Saiwai-ku, Kawasaki-shi, Kanagawa 212-0031, Japan

PIONEER ELECTRONICS (USA) INC. P.O. Box 1760, Long Beach, CA 90801-1760, U.S.A.

PIONEER EUROPE NV Haven 1087, Keetberglaan 1, 9120 Melsele, Belgium

PIONEER ELECTRONICS ASIACENTRE PTE. LTD. 253 Alexandra Road, #04-01, Singapore 159936

©PIONEER CORPORATION 2014

K-MZV DEC. 2014 Printed in Japan

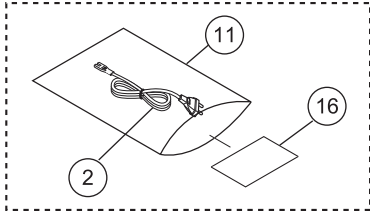
9. EXPLODED VIEWS AND PARTS LIST

NOTES: ● Parts marked by "NSP" are generally unavailable because they are not in our Master Spare Parts List.

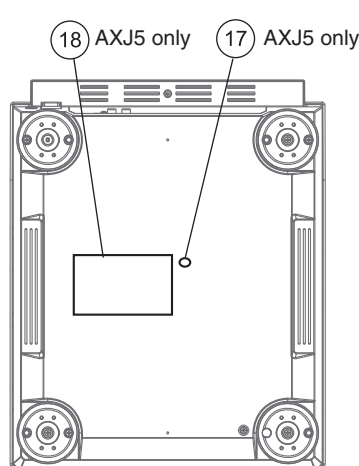
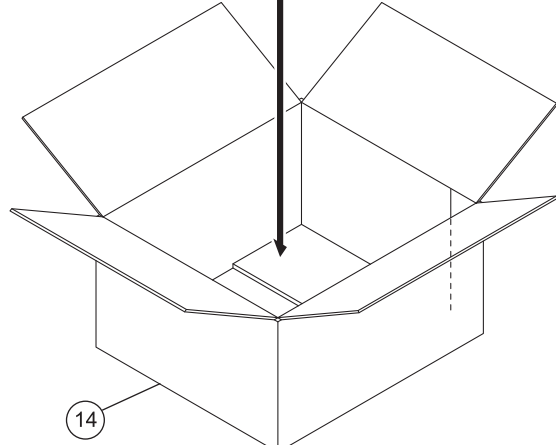
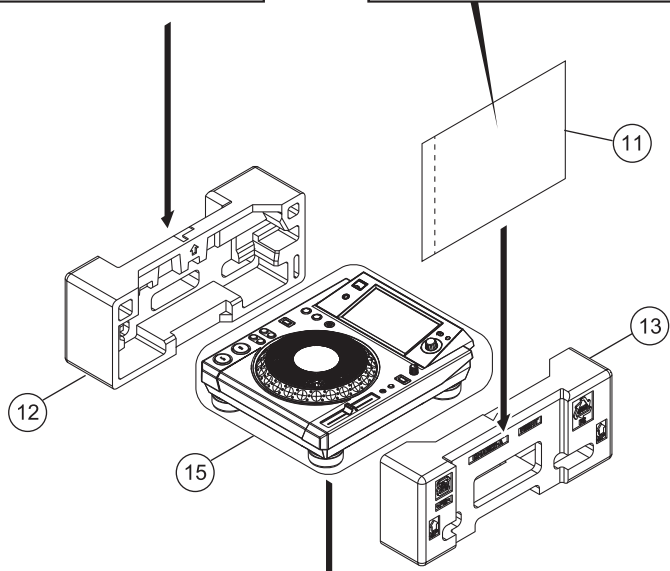
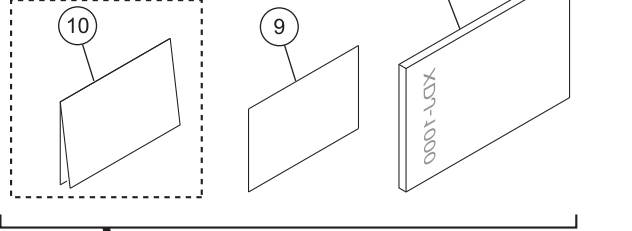
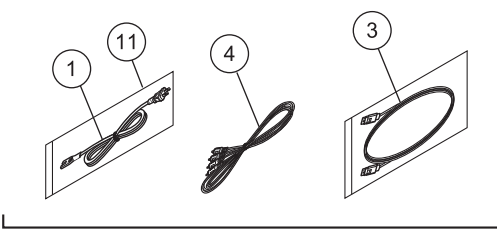
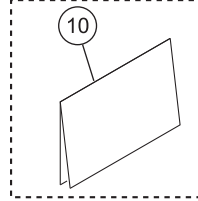
- The \triangle mark found on some component parts indicates the importance of the safety factor of the part. Therefore, when replacing, be sure to use parts of identical designation.
- Screws adjacent to ∇ mark on product are used for disassembly.
- For the applying amount of lubricants or glue, follow the instructions in this manual. (In the case of no amount instructions, apply as you think it appropriate.)

9.1 PACKING SECTION

FLXJ only



SYXJ8 only



• Bottom view

(1) PACKING SECTION PARTS LIST

Mark No.	Description	Part No.
⚠ 1	Power cord	See Contrast table (2)
⚠ 2	Power cord	See Contrast table (2)
3	LAN cable	DDE1141
5	Audio cable	XDE3045
5	Operating Instructions (Quick Start Guide)	See Contrast table (2)
6	Operating Instructions (Quick Start Guide)	See Contrast table (2)
7	Operating Instructions (Quick Start Guide)	See Contrast table (2)
8	Operating Instructions (Quick Start Guide)	See Contrast table (2)
NSP 9	Leaflet	See Contrast table (2)
NSP 10	Warranty	See Contrast table (2)
NSP 11	Polyethylene Bag	AHG7117
12	Pad/L	DHA1920
13	Pad/R	DHA1921
14	Packing Case	See Contrast table (2)
15	Packing Sheet	RHC1023
16	Caution Card SB	See Contrast table (2)
NSP 17	CCC S Label	See Contrast table (2)
NSP 18	Name Label	See Contrast table (2)

(2) CONTRAST TABLE

XDJ-1000/SYXJ8, UXJCB, FLXJ and AXJ5 are constructed the same except for the following:

Mark	No.	Symbol and Description	XDJ-1000 /SYXJ8	XDJ-1000 /UXJCB	XDJ-1000 /FLXJ	XDJ-1000 /AXJ5
⚠	1	Power cord	ADG1154	ADG7022	ADG1154	ADG7079
⚠	2	Power cord	Not used	Not used	ADG7097	Not used
	5	Operating Instructions (Quick Start Guide) (En, Fr, De, It, NI, Es, Pt, Ru)	DRH1278	Not used	Not used	Not used
	6	Operating Instructions (Quick Start Guide) (En)	Not used	DRH1277	Not used	Not used
	7	Operating Instructions (Quick Start Guide) (En, Es, Zhtw)	Not used	Not used	DRH1279	Not used
	8	Operating Instructions (Quick Start Guide) (Zhcn)	Not used	Not used	Not used	DRH1280
NSP	9	Leaflet	DRH1275	DRH1275	DRH1275	DRH1274
NSP	10	Warranty	ARY7158	Not used	Not used	Not used
	14	Packing Case	DHG3378	DHG3377	DHG3379	DHG3381
	16	Caution Card SB	Not used	Not used	ARM7064	Not used
NSP	17	CCC S Label	Not used	Not used	Not used	DRW2310
NSP	18	Name Label	Not used	Not used	Not used	DAL1271

9.2 EXTERIOR SECTION

1 2 3 4

A

B

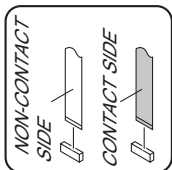
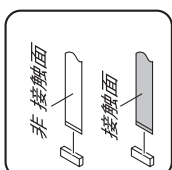
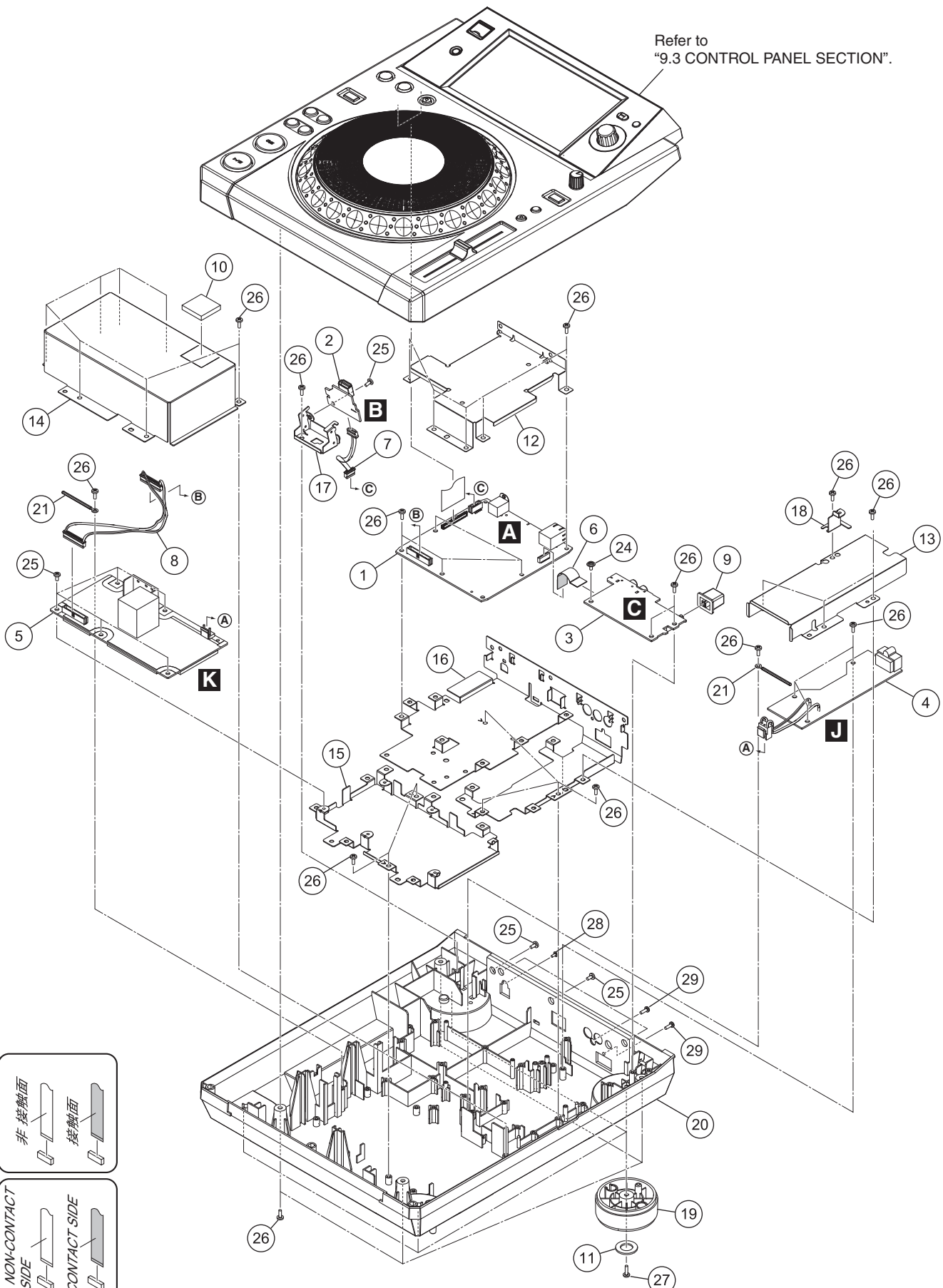
C

D

E

F

Refer to
"9.3 CONTROL PANEL SECTION".



1 2 3 4

EXTERIOR SECTION PARTS LIST

<u>Mark No.</u>	<u>Description</u>	<u>Part No.</u>	
1	MAIN Assy	DWX3600	
2	USBA Assy	DWX3607	A
3	JKSW Assy	DWX3612	
4	ACIN Assy	DWX3609	
⚠	5 SW POWER SUPPLY	DWR1545	
6	FFC	DDD1677	
7	Shielded Conn-Cable	DDA1049	
8	Crimp Connector	PF13PP-S20	
9	Power Knob	DAC2306	
10	Cushion/PNL	DEC3535	
11	Leg	DEC3564	B
12	Shield Case/MIN	DNH3170	
13	Shield Case/ACI	DNH3171	
14	Shield Case/PSA	DNH3175	
15	Stay/PSA	DNH3176	
16	Stay/PCB	DNH3177	
17	Stay/USB	DNH3178	
18	Plate/JCK	DNH3193	
19	Insulator	DNK6394	
⚠	20 Chassis	DNK6378	C
21	Cord Clamper (Steel)	RNH-184	
22	•••••		
23	•••••		
24	Screw	ABZ30P060FTC	
25	Screw	BBZ30P060FTB	
26	Screw	BPZ30P080FNI	
27	Screw	BPZ30P100FTC	
28	Screw (M3*5)	DBA1340	
29	Screw	PPZ30P080FTB	D

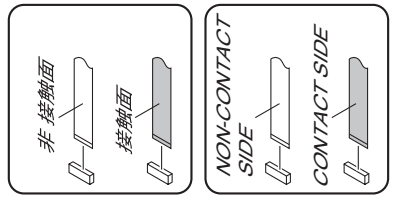
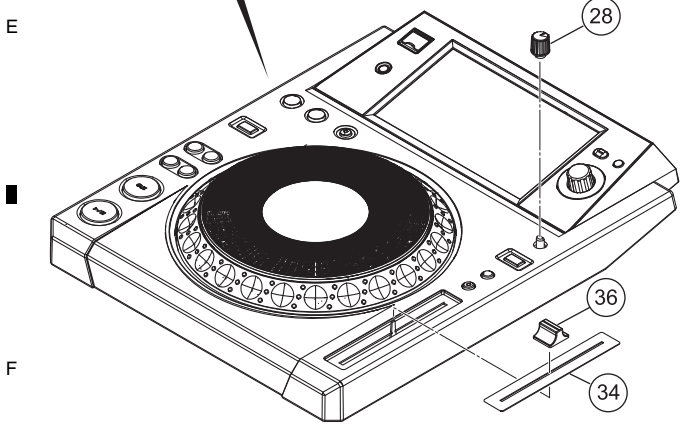
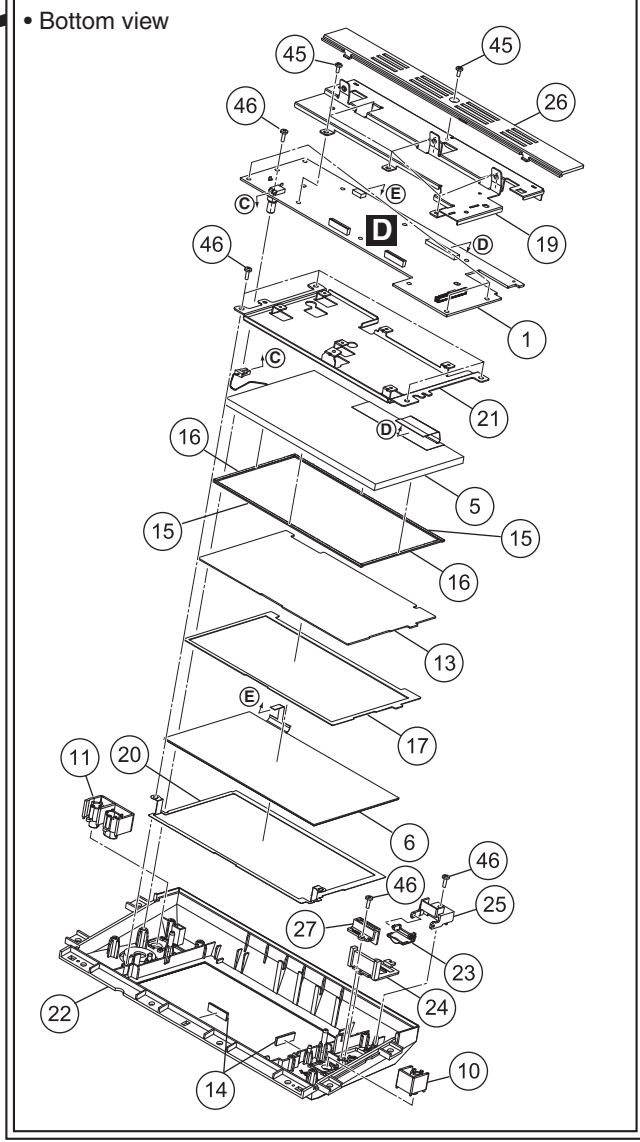
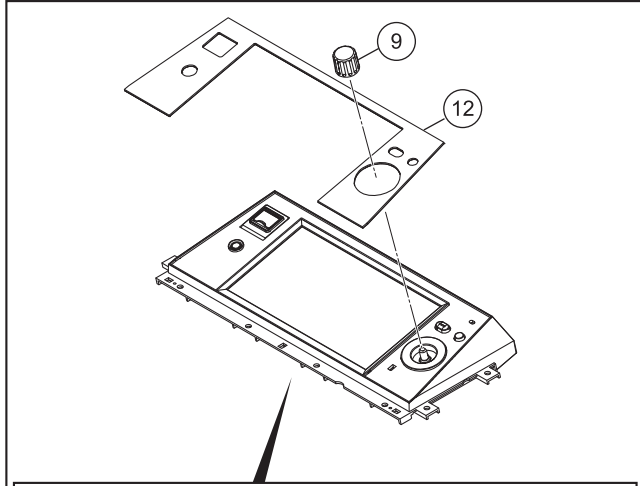
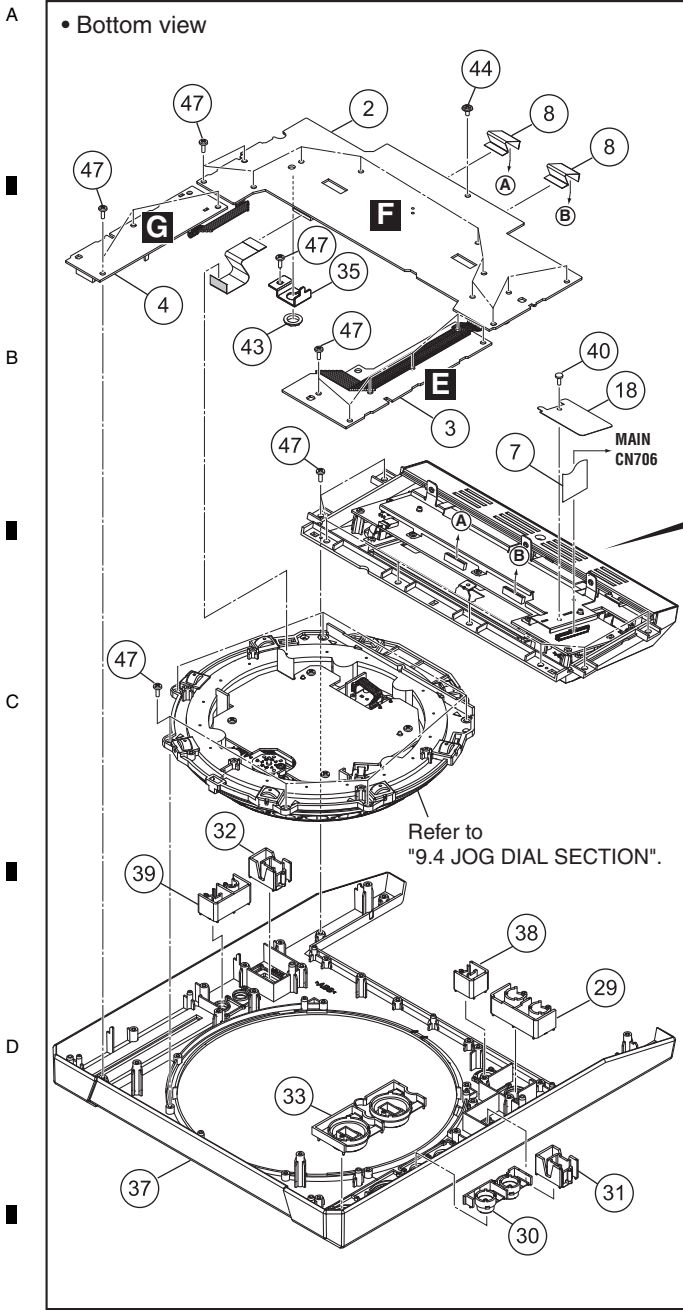
9.3 CONTROL PANEL SECTION

1

2

3

4



1

2

3

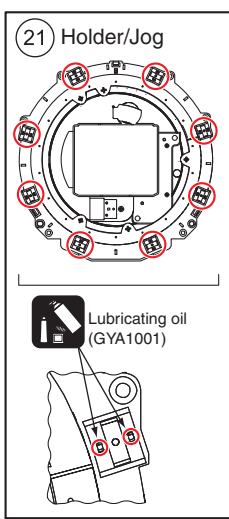
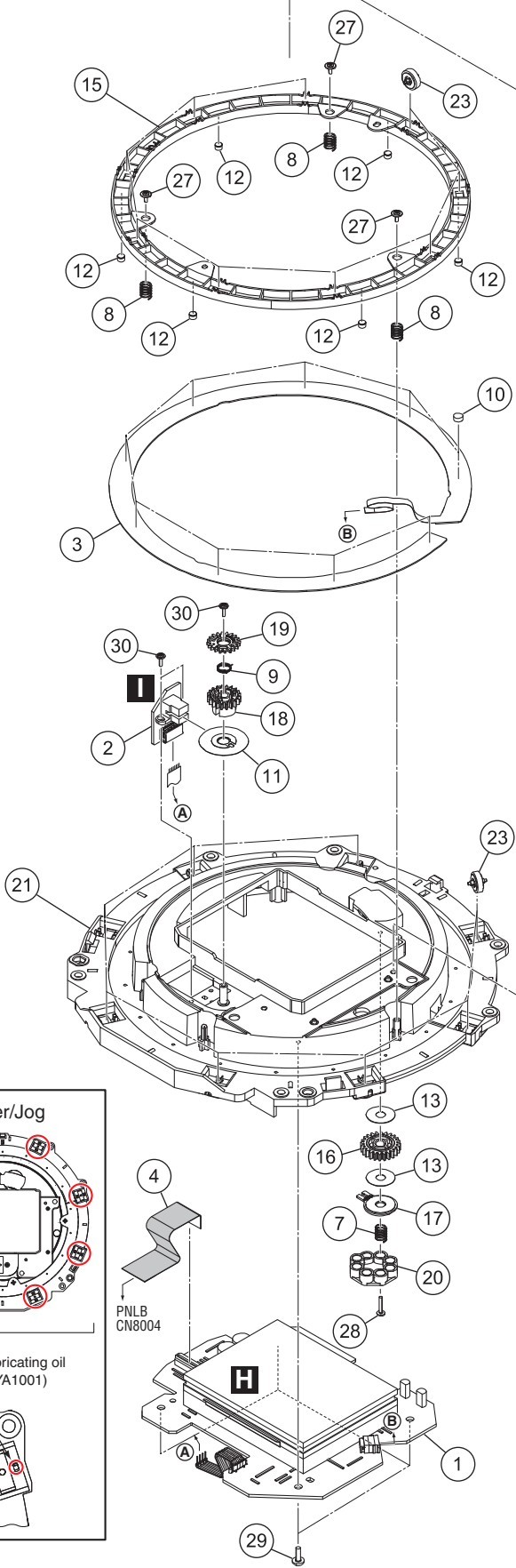
4

CONTROL PANEL SECTION PARTS LIST

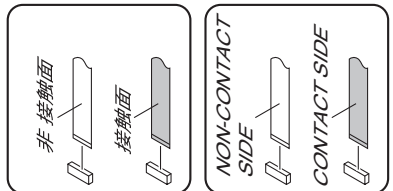
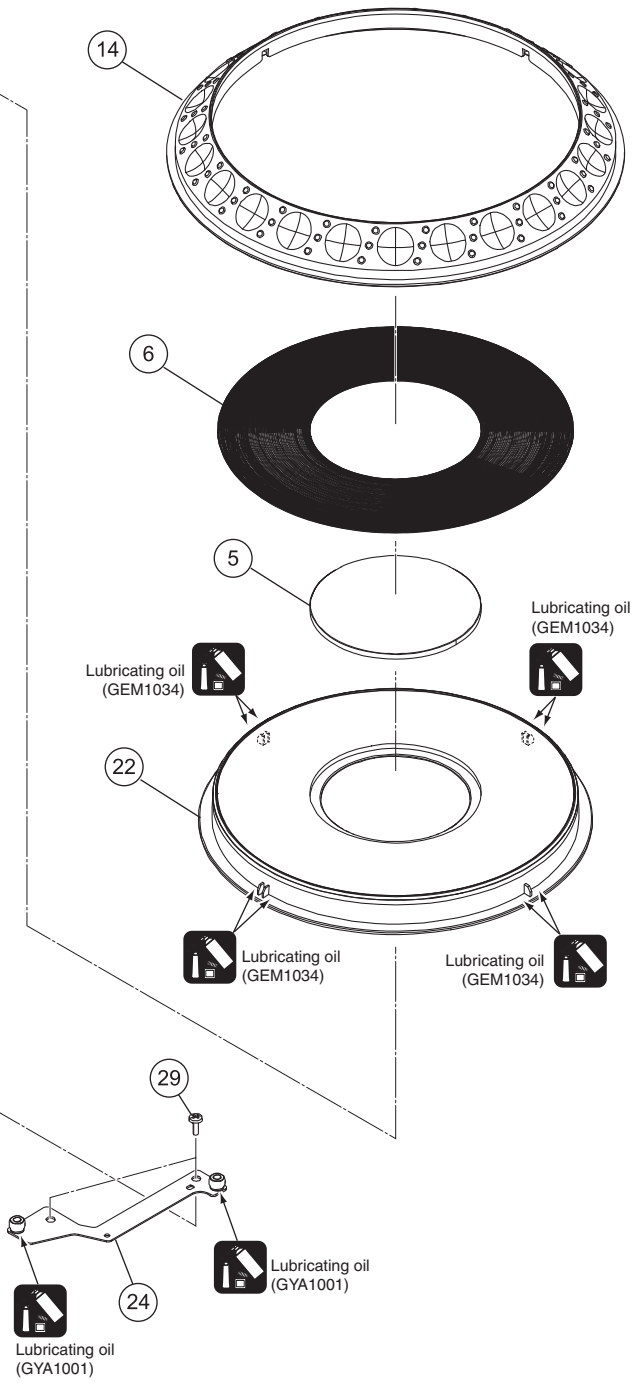
<u>Mark No.</u>	<u>Description</u>	<u>Part No.</u>	
1	LCDB Assy	DWX3601	
2	PNLB Assy	DWX3603	A
3	KSWB Assy	DWX3604	
4	SLDB Assy	DWX3605	
5	TFT LCD	CWX4352	
6	Touch Panel	DSX1128	
7	FFC	DDD1675	
8	FFC	DDD1679	
9	Knob/BRS	DAA1342	
10	Button/USB	DAC3016	
11	Button/BAK	DAC3017	B
12	Panel/LCD	DAH3005	
13	Panel/TCP	DAH3006	
14	Packing/LCD	DEC3565	
15	Packing/L	DEC3568	
16	Packing/S	DEC3569	
17	Spacer/LCD	DEC3571	
18	Sheet/FFC	DEC3577	
19	Shield Case/LCD	DNH3172	
20	Plate/GND	DNH3173	C
21	Stay/LCD	DNH3179	
⚠ 22	Control Panel/LCD	DNK6377	
23	Door/USB	DNK6379	
24	Lens/USB	DNK6381	
25	Holder/DOR	DNK6383	
26	Cover/R	DNK6395	
27	Reflector	DNK6400	
28	Knob	DAA1303	
29	Button (LOOP)	DAC2470	D
30	Button	DAC3079	
31	Button/REV	DAC2938	
32	Button/VNL	DAC2939	
33	Button/PLY	DAC3004	
34	Slide Sheet 1C	DAH2404	
35	Stay/VR	DNF1928	
36	Knob/SLD	DNK5981	
⚠ 37	Control Panel	DNK6376	
38	Button Assy/RLP	DXB2162	E
39	Button Assy/TMP	DXB2163	
40	Rivet (Plastic)	RBM-003	
41	•••••		
42	•••••		
43	Flange Nut M9	DBN1008	
44	Screw	ABZ30P060FTC	
45	Screw	BBZ26P060FTB	
46	Screw	BPZ26P080FTC	F
47	Screw	BPZ30P080FNI	

9.4 JOG DIAL SECTION

A
B
C
D
E
F



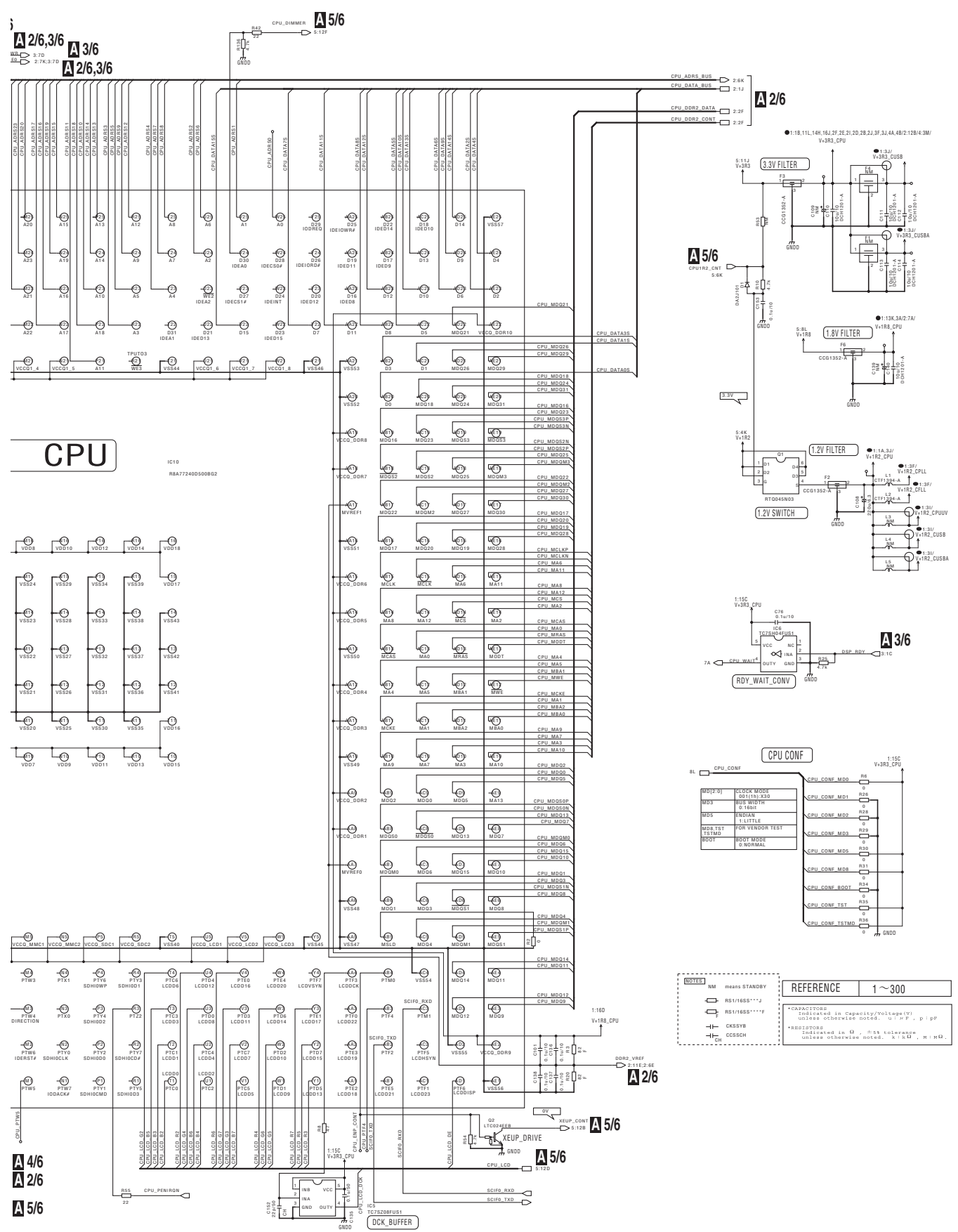
PNLB
CN8004



JOG DIAL SECTION PARTS LIST

<u>Mark No.</u>	<u>Description</u>	<u>Part No.</u>	
1	JFLB Assy	DWX3610	
2	JOGB Assy	DWX3611	A
3	Sheet SW	DSX1078	
4	FFC	DDD1681	
5	Jog Panel	DAH2609	
6	Jog Plate	DAH2839	
7	Load Spring	DBH1680	
8	SW Spring	DBH1681	
9	Encoder Spring	DBH1710	
10	SW Cushion HH48/2	DEC2538	
11	Encoder Plate	DEC2889	B
12	Cushion/Rng	DEC3466	
13	Washer	DEC3137	
14	Jog B	DNK4068	
15	SW Ring	DNK5233	
16	Load Gear	DNK5236	
17	Smoother	DNK5237	
18	Gear A	DNK5241	
19	Gear B	DNK5242	
20	Adjust Plate	DNK5300	C
⚠ 21	Holder/Jog	DNK6265	
22	Jog Dial A	DNK5357	
23	Roller Assy/A	DXB2118	
24	Stay Assy/Jog	DXB2133	
25	•••••		
26	•••••		
27	Screw (FE)	DBA1265	
28	Screw	BPZ20P100FTC	
29	Screw	BPZ30P080FNI	D
30	Screw	IPZ20P060FTC	

A 1/6 MAIN ASSY (DWX3600)



A 2/6,3/6
A 3/6
A 2/6,3/6

CPU

A 4/6
A 2/6
A 5/6

A 2/6

A 5/6

A 3/6

CPU CONF

A 2/6

A 5/6

XDJ-1000

A 1/6

10.2 MAIN ASSY (2/6)

1

2

3

4

A

B

C

D

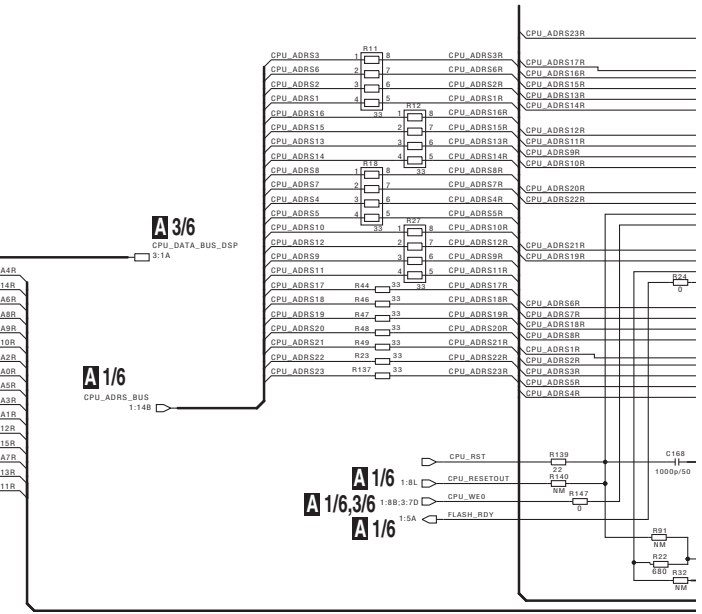
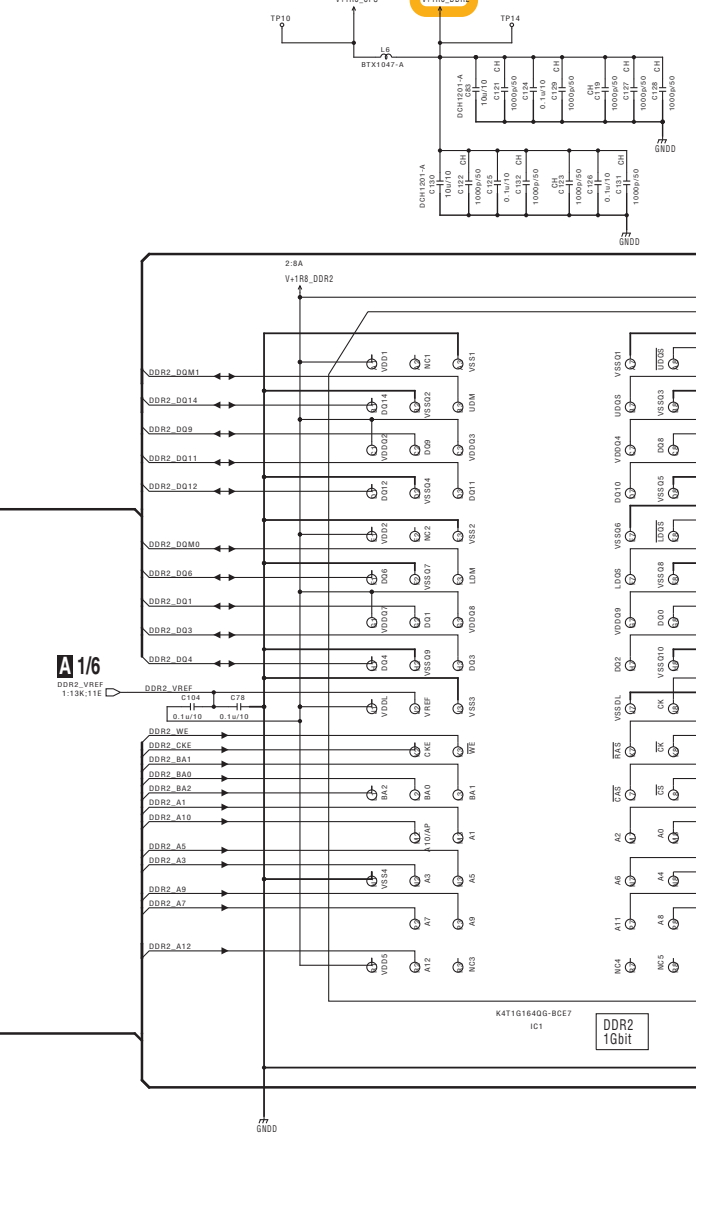
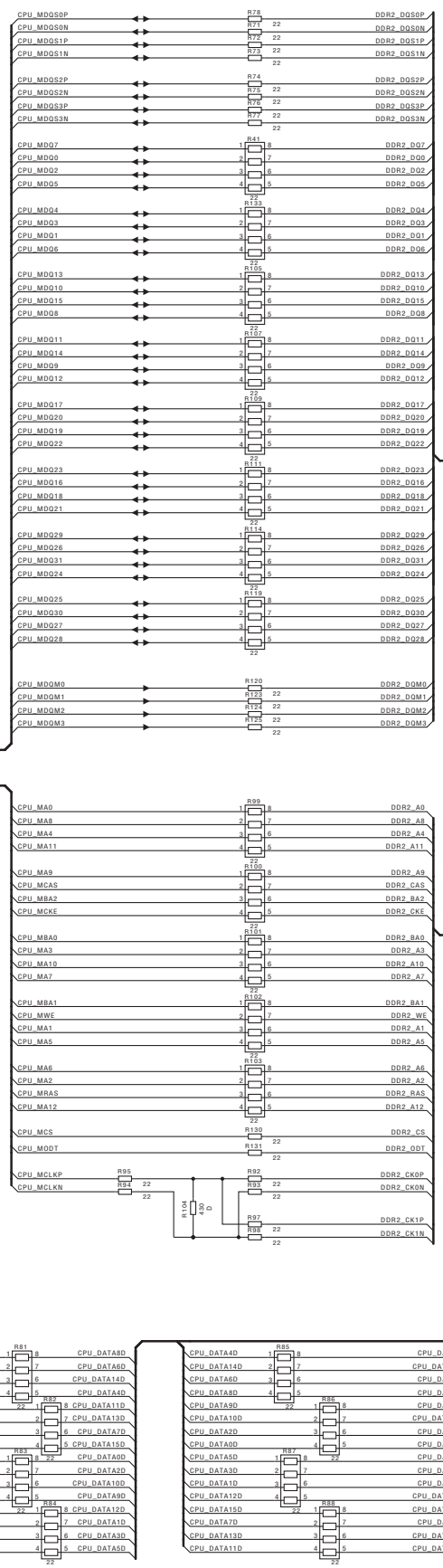
E

F

A/1/6
CPU_DDR2_DATA
CPU_DDR2_CONT

A/1/6
CPU_DATA_BUS
CPU_DATA_BUS_DSP

A/2/6



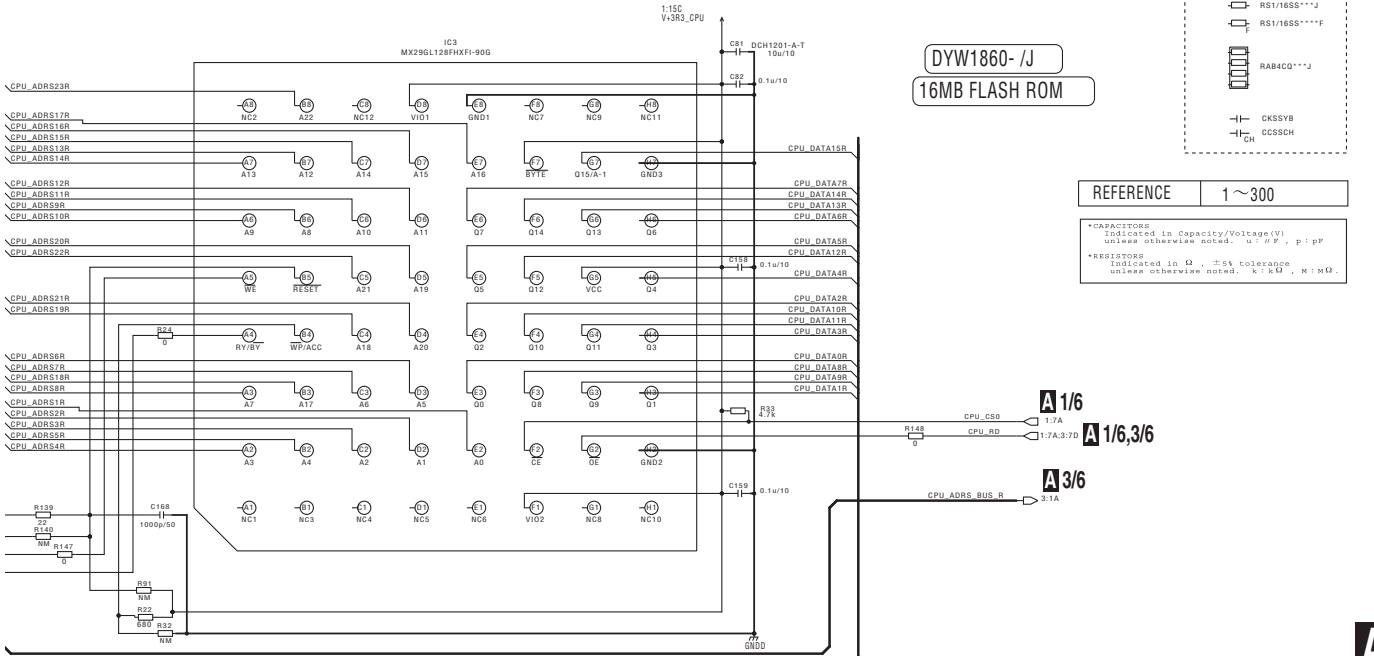
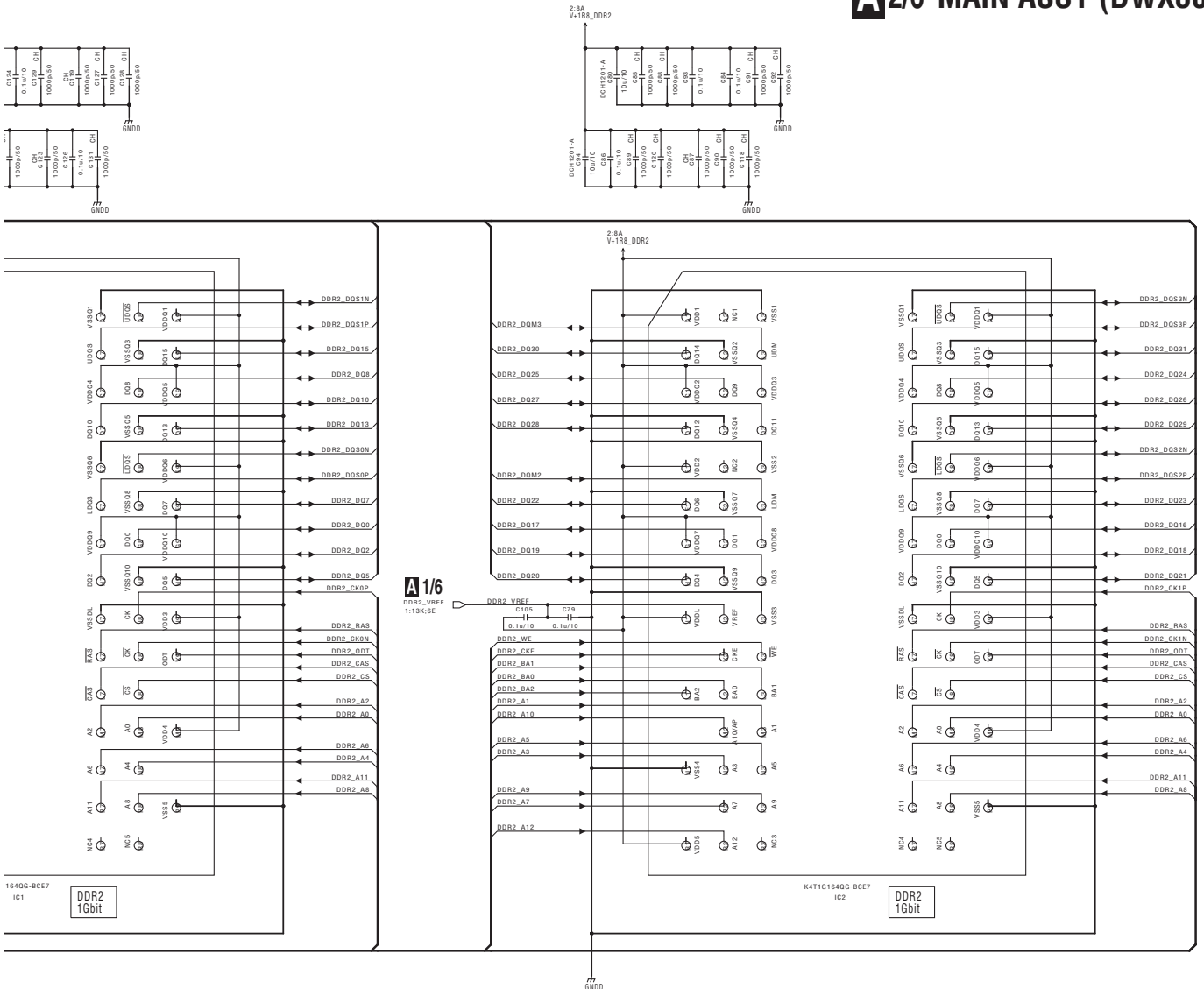
1

2

3

4

A2/6 MAIN ASSY (DWX3600)



10.3 MAIN ASSY (3/6)

1

2

3

4

A

B

C

D

E

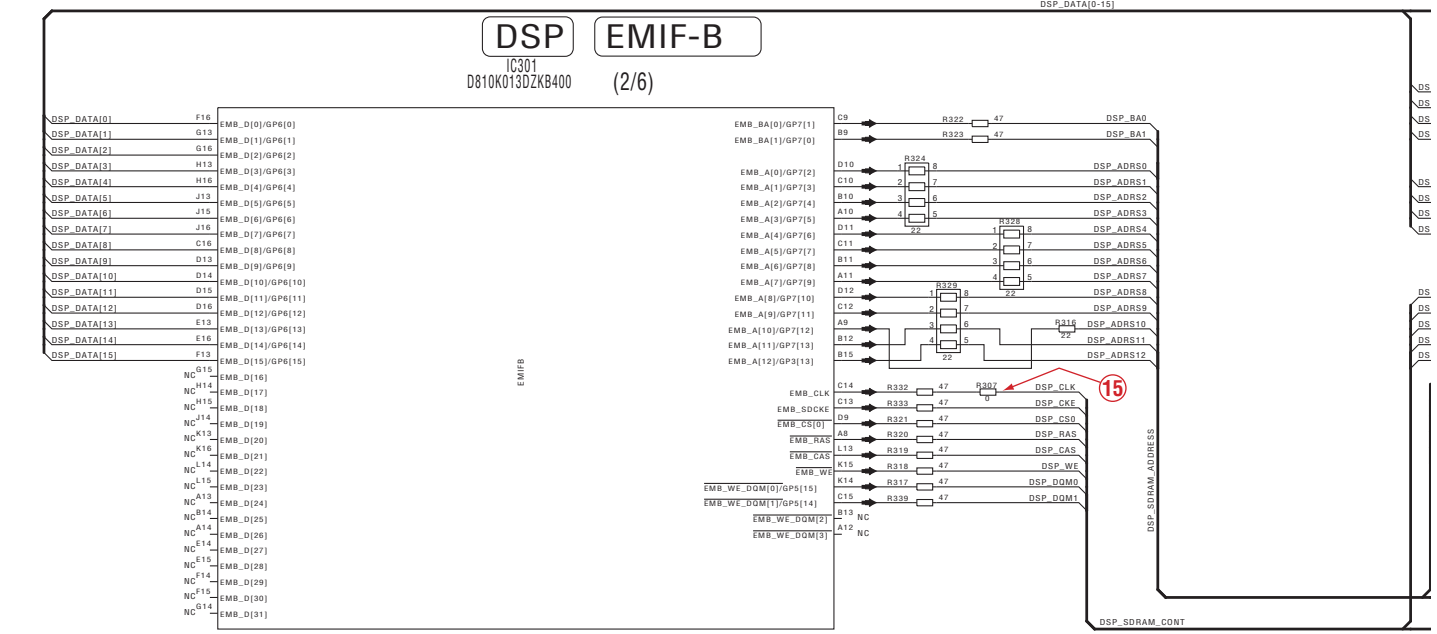
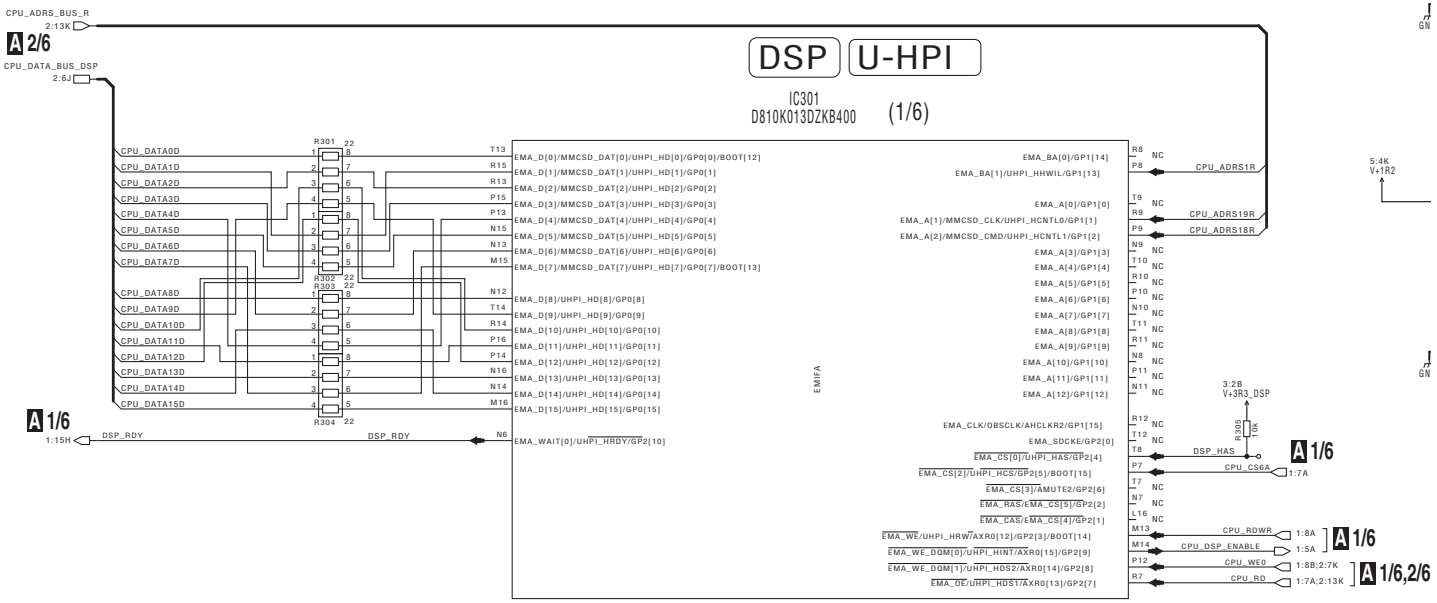
F

5:11J
V+3R3

6V

5:4K
V+R2

6V



A 3/6

60

XDJ-1000

1

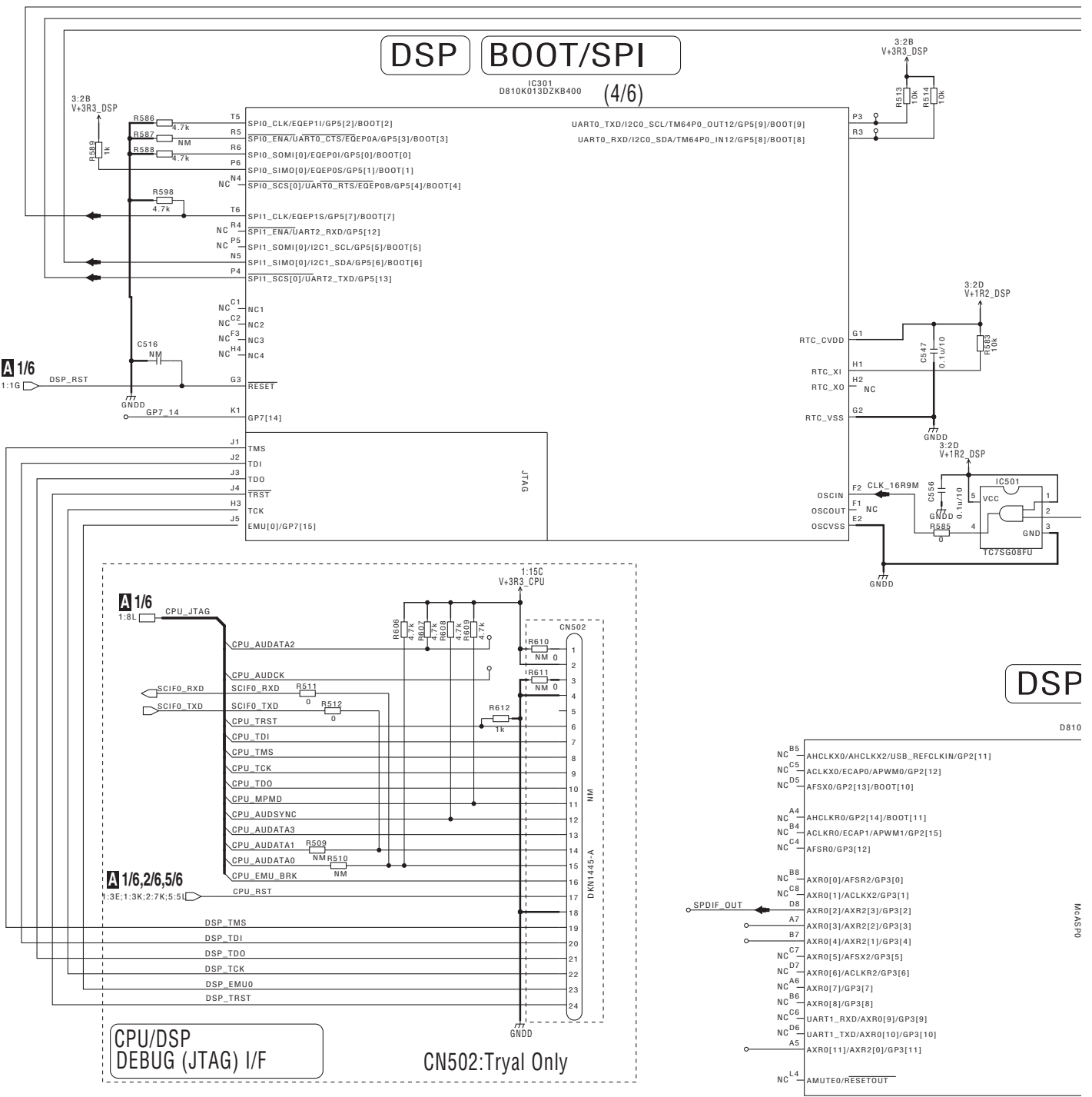
2

3

4

10.4 MAIN ASSY (4/6)

A
B
C
D
E
F



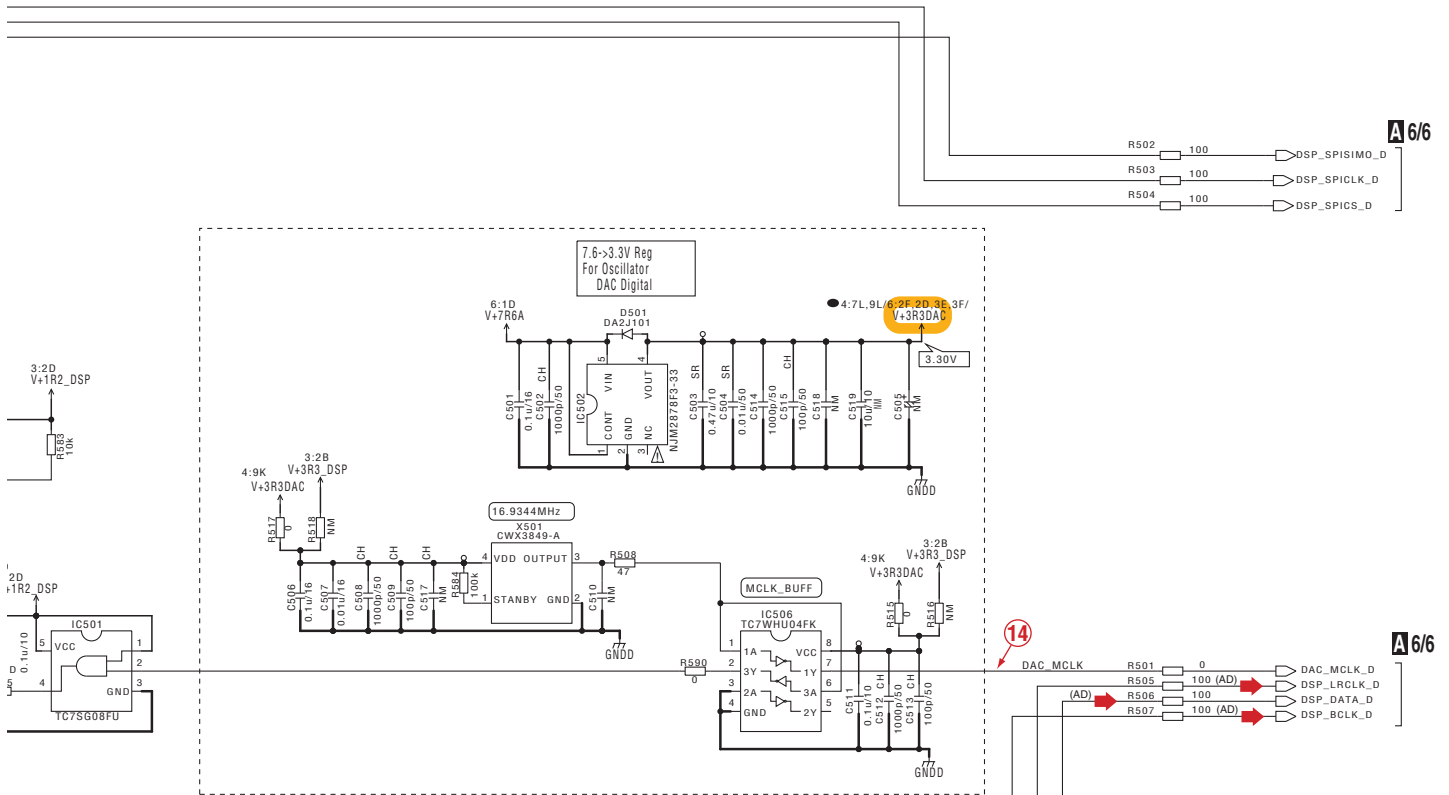
DSP USB IC301 D810K013DZKB400 (6/6)



A 4/6

A/6 MAIN ASSY (DWX3600)

A

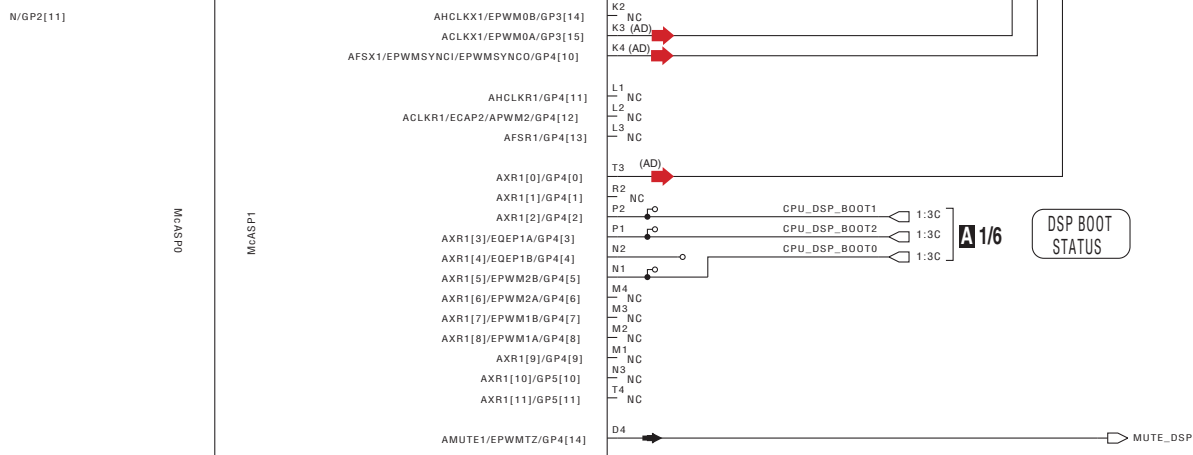


B

C

DSP McASP

IC301 D810K013DZKB400 (5/6)



D

E

NOTES

- NM means STANDBY
- RS1/16SS***J
- CKSSYB
- CCSSCH

REFERENCE	501 ~ 700
*CAPACITORS	Indicated in Capacity/Voltage (V) unless otherwise noted. u : μ F, p : pF
*RESISTORS	Indicated in Ω , \pm 5% tolerance unless otherwise noted. k : k Ω , M : M Ω .

The Δ mark found on some component parts indicates the importance of the safety factor of the part. Therefore, when replacing, be sure to use parts of identical designation.

Δ 印の部品は、安全上重要な部品です。交換するときは、安全および性能維持のため必ず指定の部品をご使用ください。

(AD) \rightarrow : Audio Data Signal Route

F

10.5 MAIN ASSY (5/6)

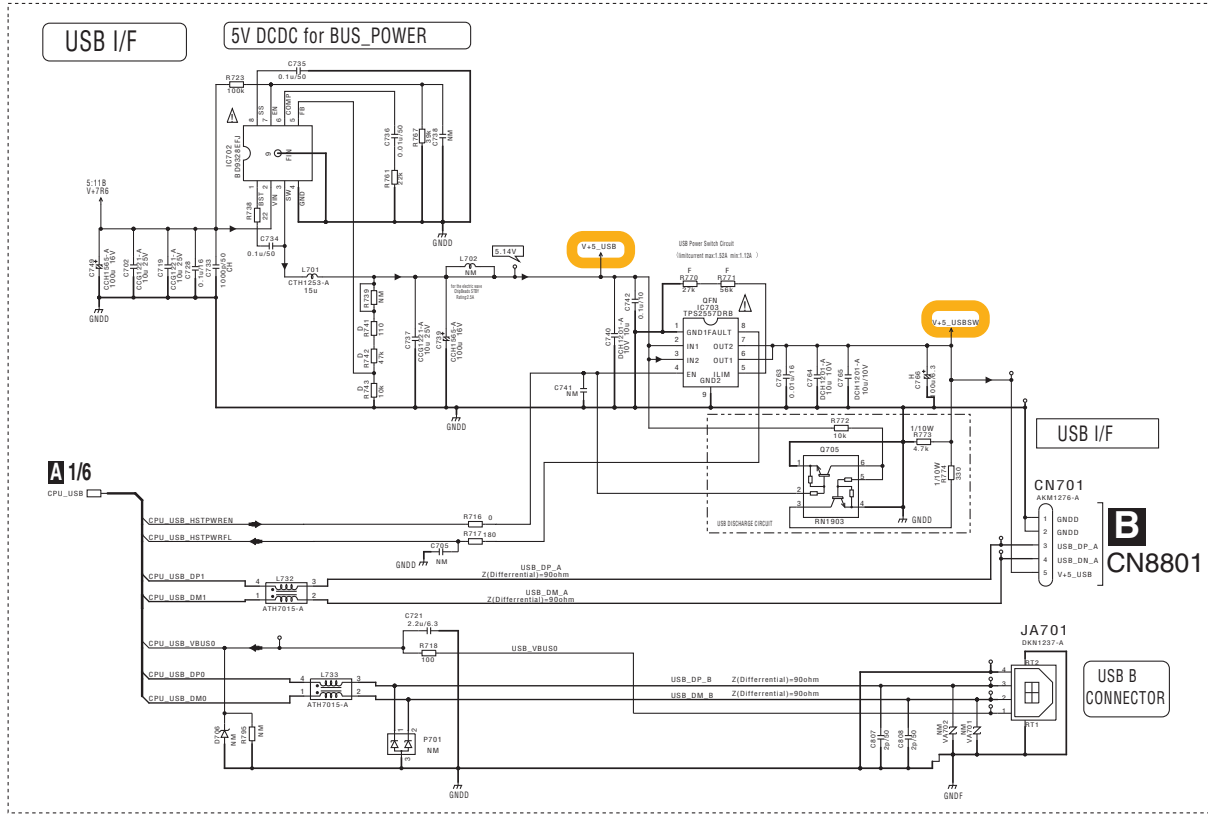
1

2

3

4

A

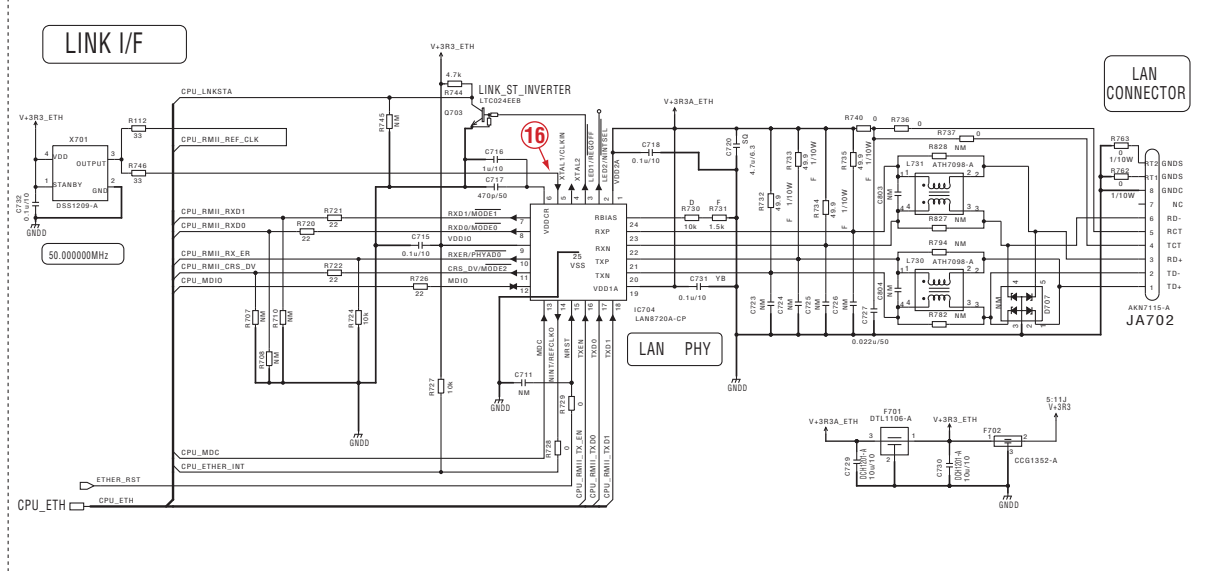


B

C

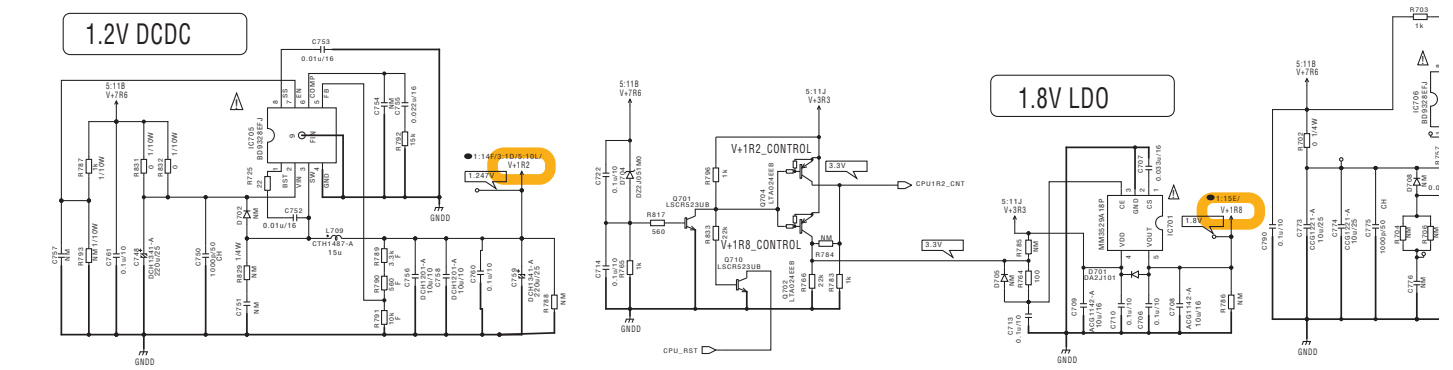
C

D



E

F



A 5/6

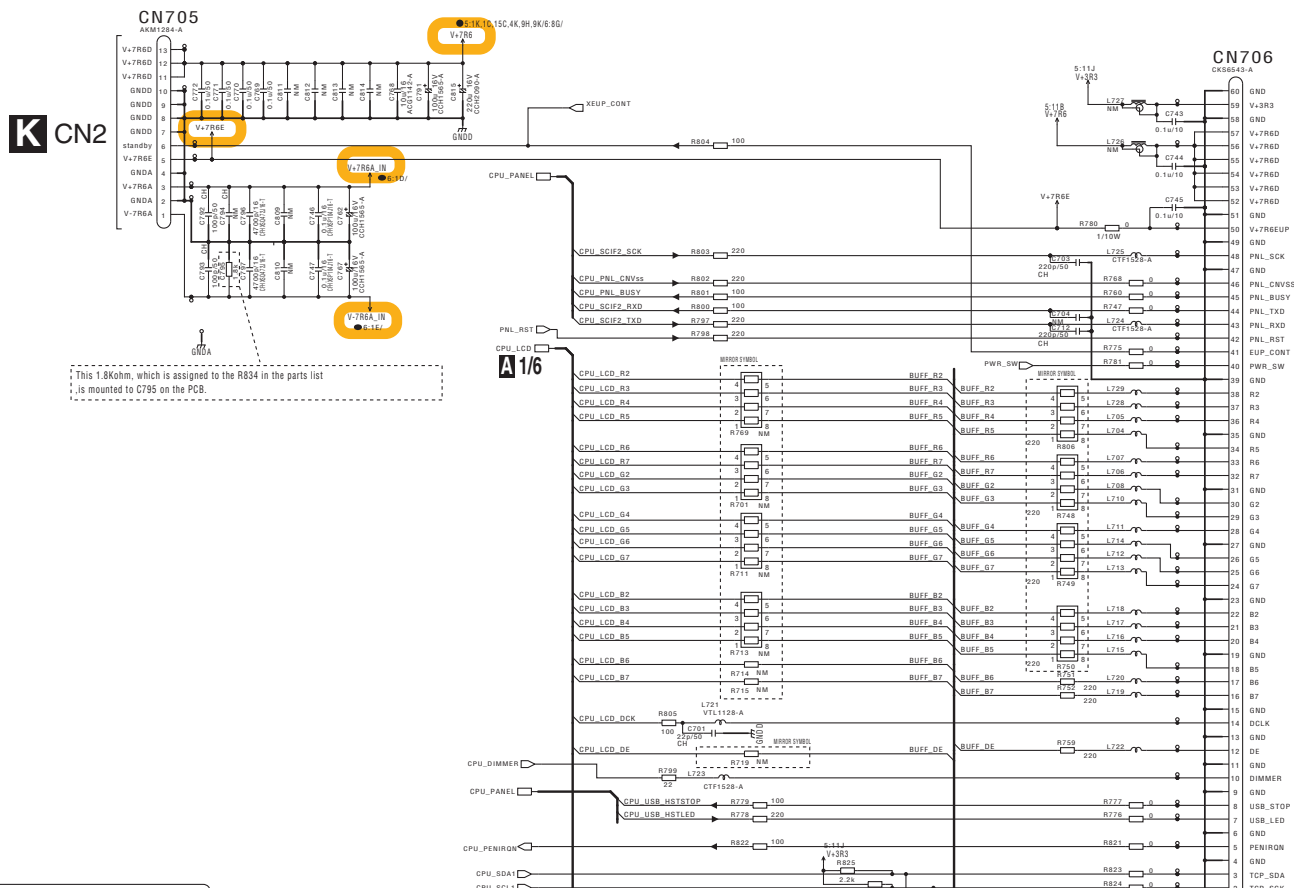
1

2

3

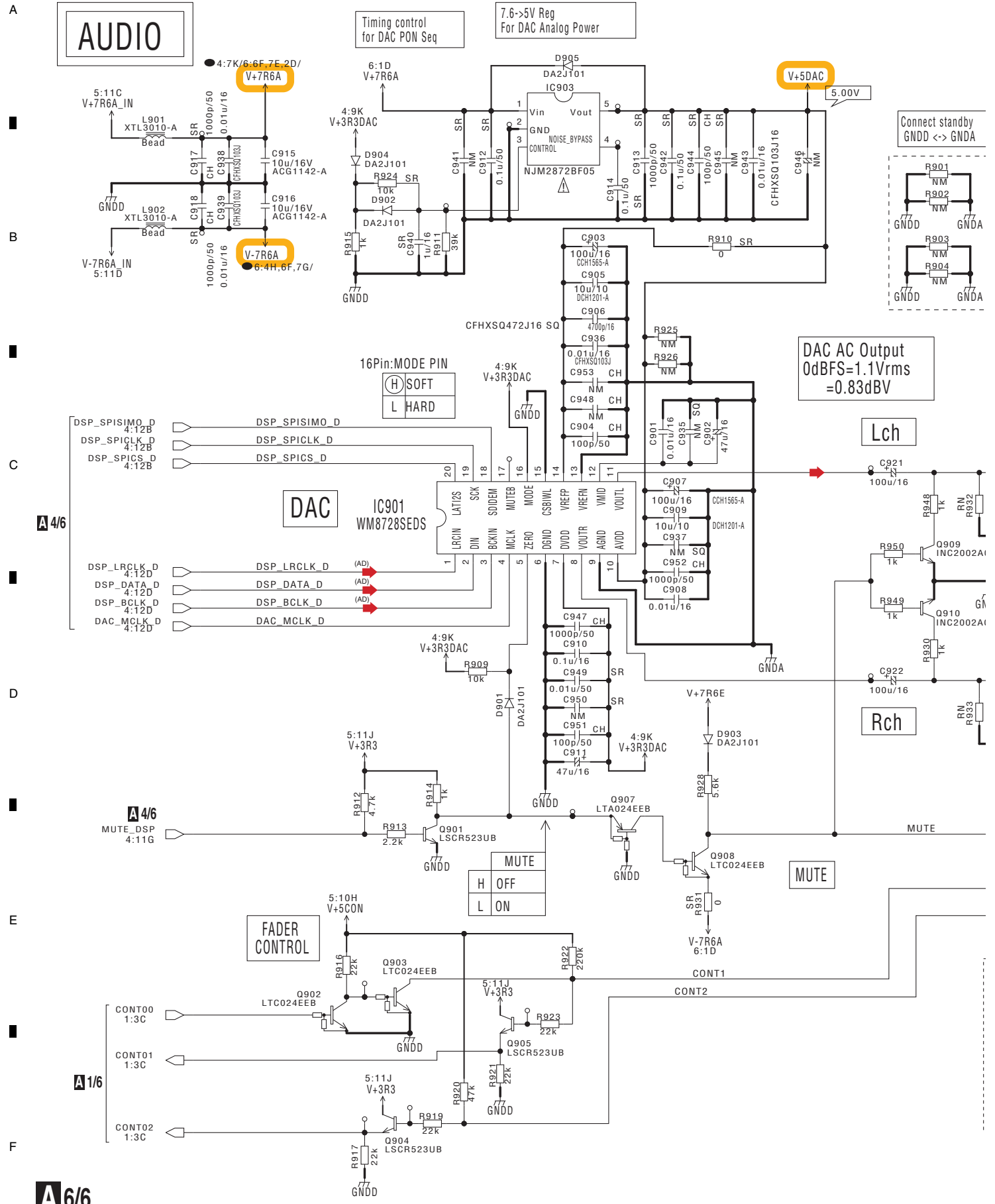
4

A5/6 MAIN ASSY (DWX3600)



D1/3 CN2004

10.6 MAIN ASSY (6/6)



A/6/6

A 6/6 MAIN ASSY (DWX3600)

A

B

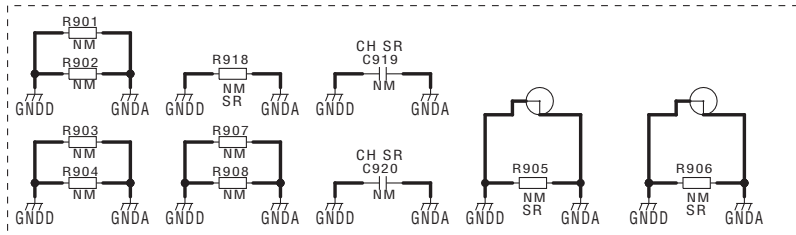
C

D

E

F

Connect standby
GNDD <-> GNDA

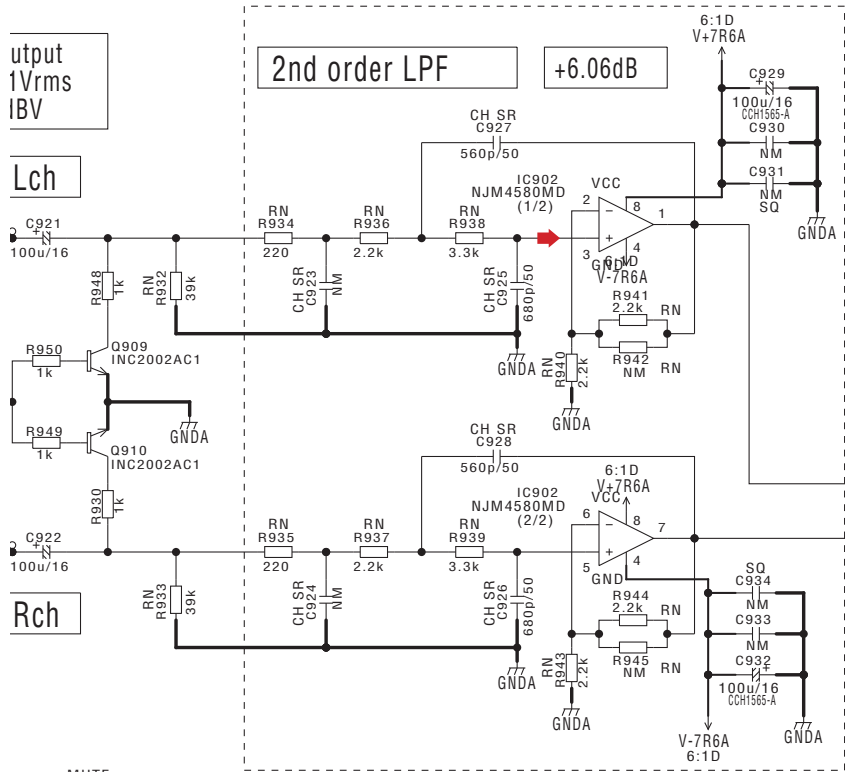


Output
1Vrms
IBV

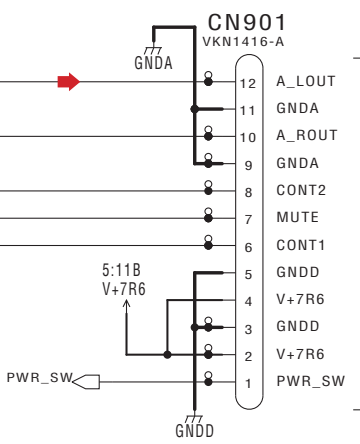
Lch

Rch

2nd order LPF +6.06dB



AUDIO I/F
FADER CONT I/F



C CN9401

- NOTES
- NM means STANDBY
 - RS1/16SS***J
 - RS1/10SR***J
 - RN1/16SE***D
 - RS1/10SR***D
 - CKSSYB
 - CCSSCH
 - CKSRYB
 - CCSRCH
 - CEHVAW

REFERENCE 901 ~ 999

*CAPACITORS
Indicated in Capacity/Voltage(V)
Unless otherwise noted. u : μF p : pF

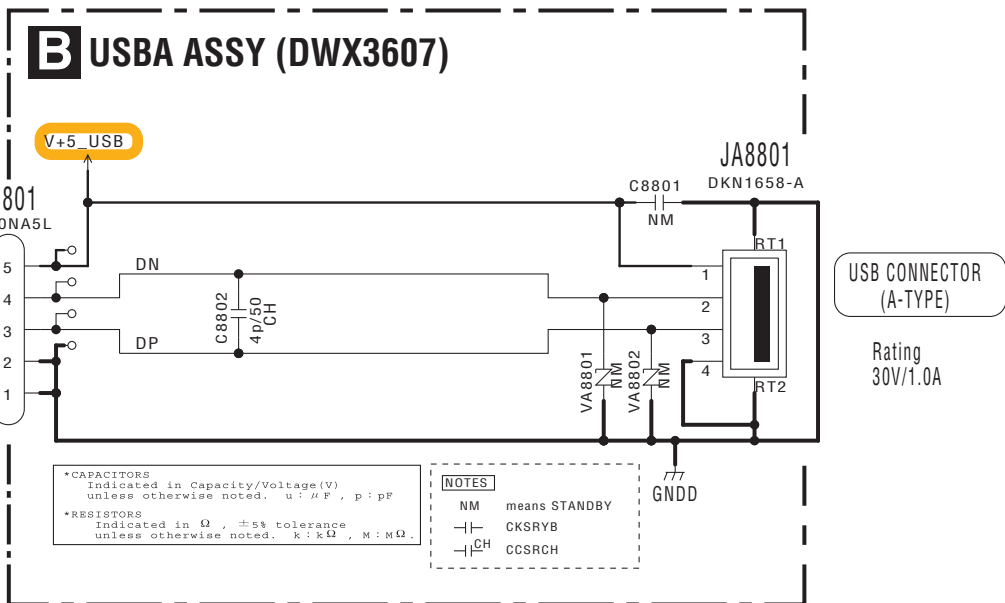
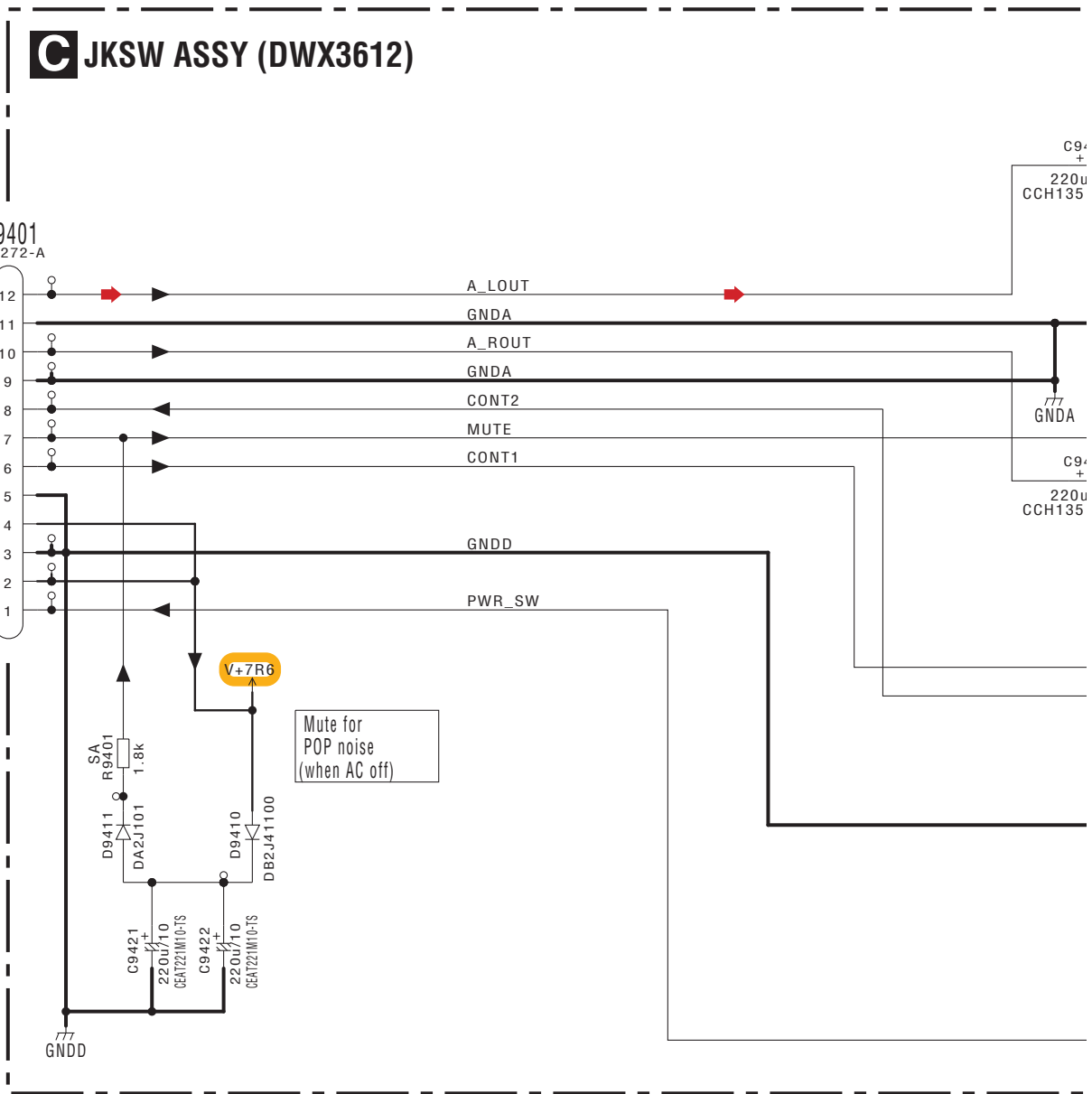
*RESISTORS
Indicated in Ω, 5% tolerance
Unless otherwise noted. R : Ω B : kΩ N : MΩ

The Δ mark found on some component parts indicates the importance of the safety factor of the part. Therefore, when replacing, be sure to use parts of identical designation.

Δ 印の部品は、安全上重要な部品です。交換するときは、安全および性能維持のため必ず指定の部品をご使用ください。

(AD) \rightarrow : Audio Data Signal Route
 \rightarrow : Analog Audio Signal Route (L ch)

10.7 USBA and JKSW ASSYS

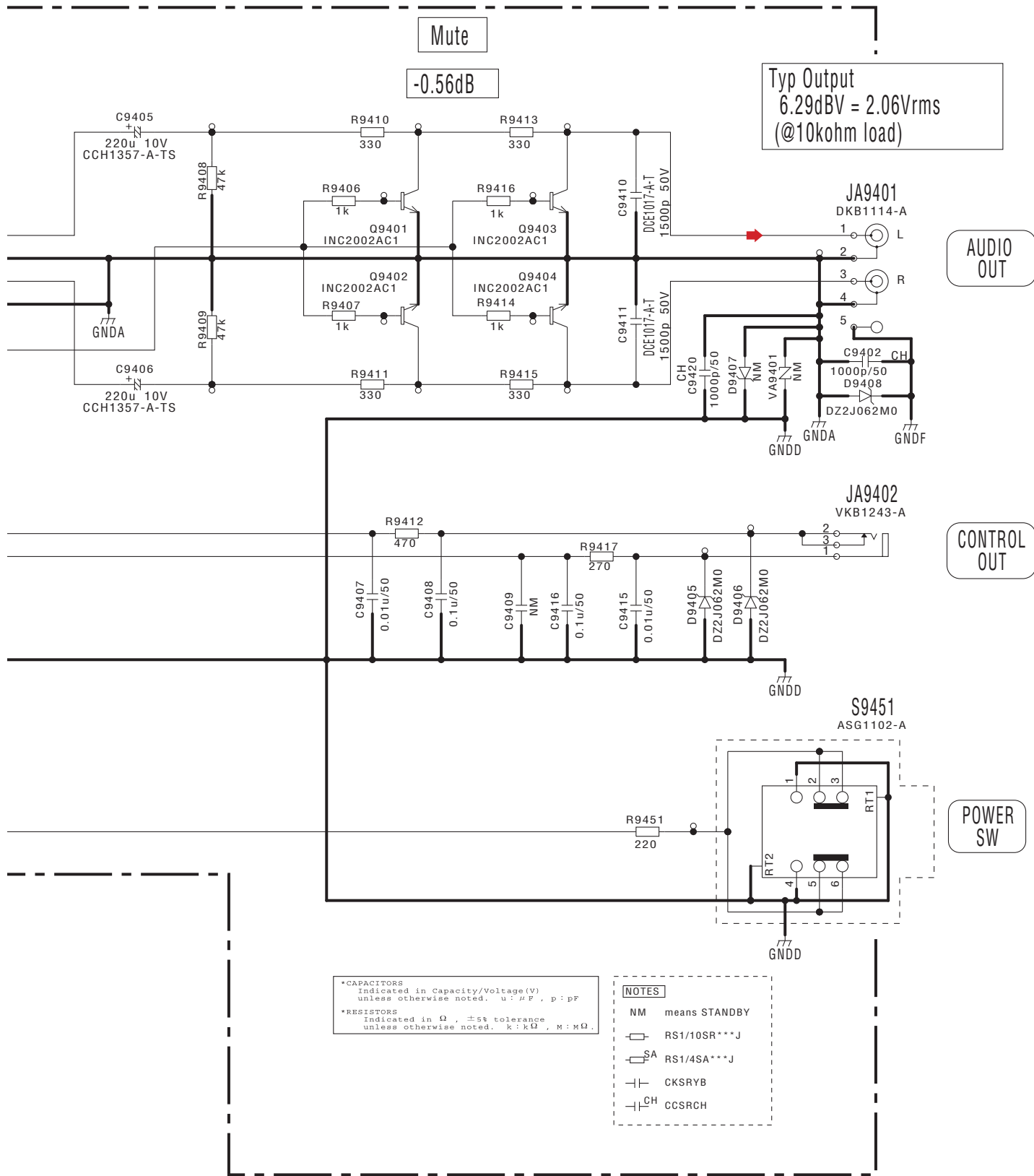


B C

Mute

-0.56dB

Typ Output
6.29dBV = 2.06Vrms
(@10kohm load)



AUDIO OUT

CONTROL OUT

POWER SW

*CAPACITORS
Indicated in Capacity/Voltage (V)
unless otherwise noted. u: μ F, p: pF

*RESISTORS
Indicated in Ω , $\pm 5\%$ tolerance
unless otherwise noted. k: k Ω , M: M Ω .

NOTES

NM means STANDBY

□ RS1/10SR***J

□ SA RS1/4SA***J

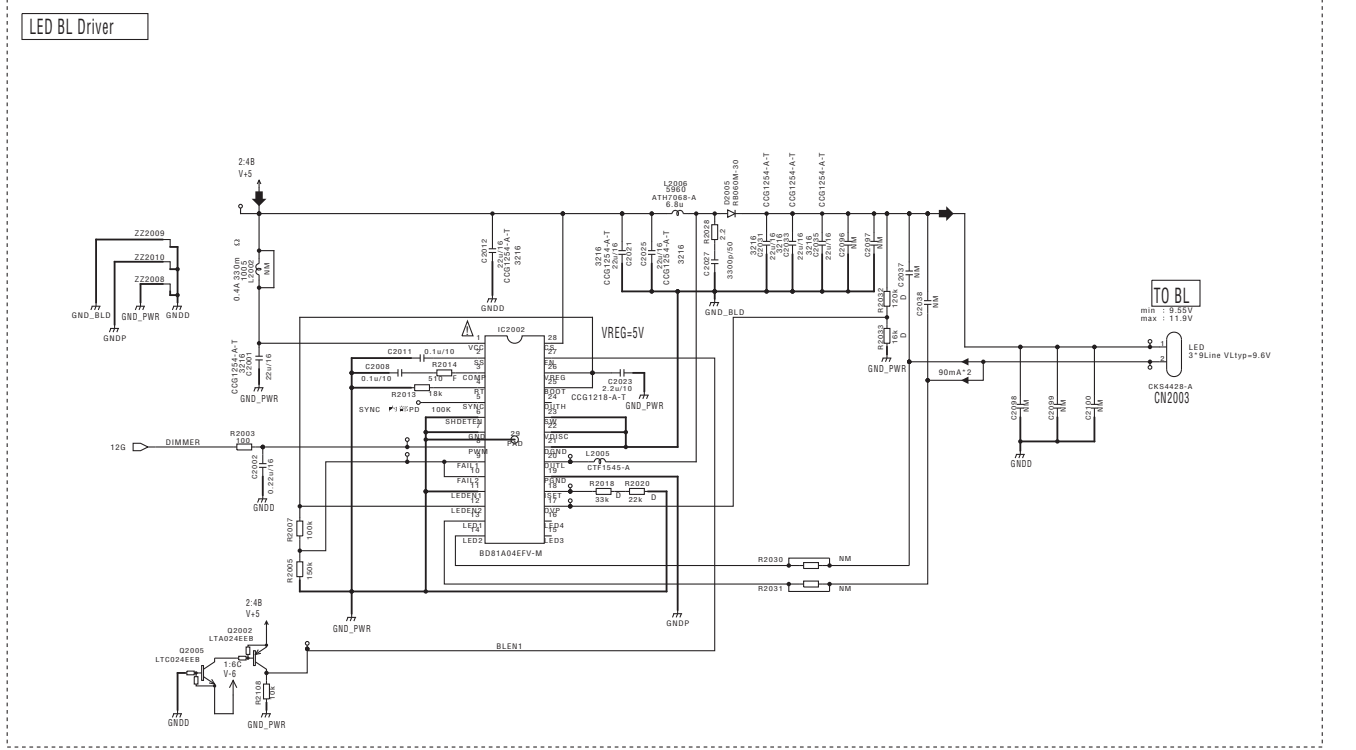
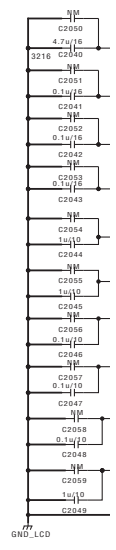
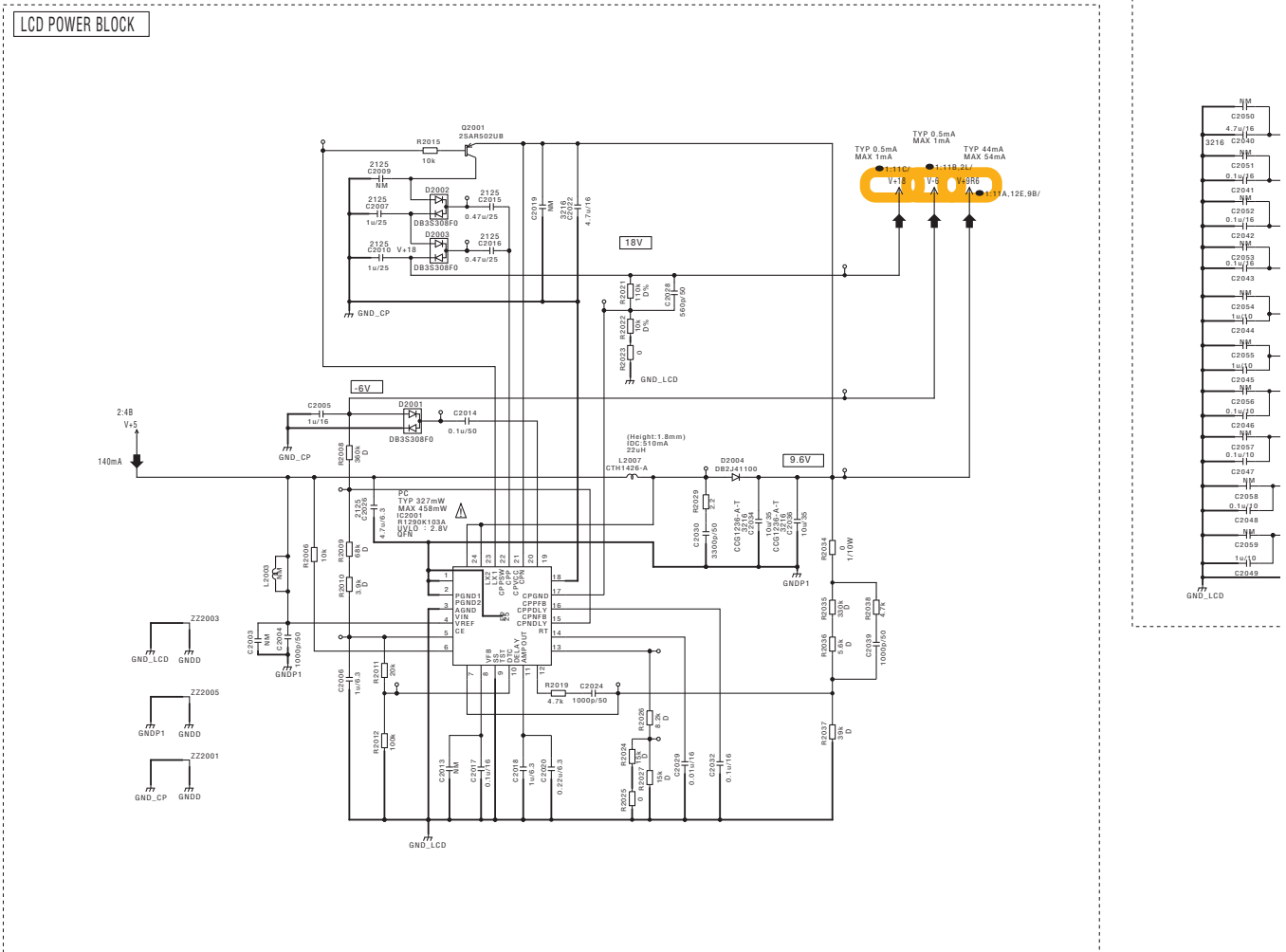
□ CKSRYB

□ CH CCSRCH

➔ : Analog Audio Signal Route (L ch)

10.8 LCDB ASSY (1/3)

GRADATION

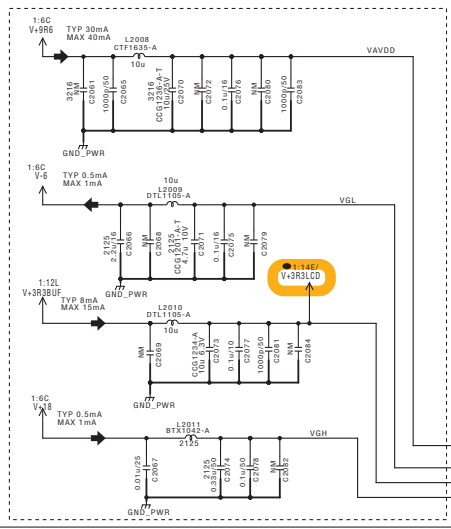
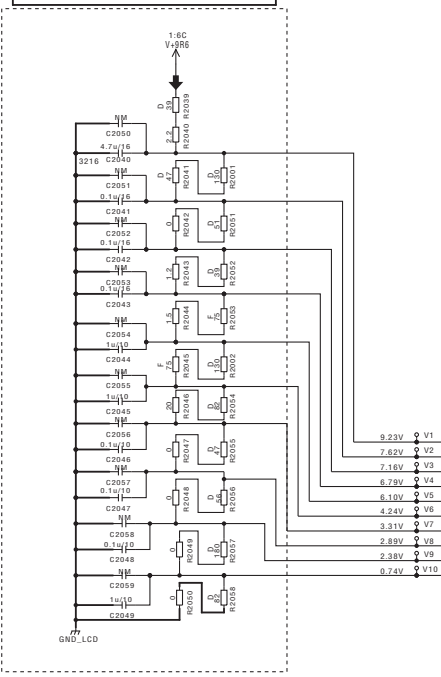


D 1/3

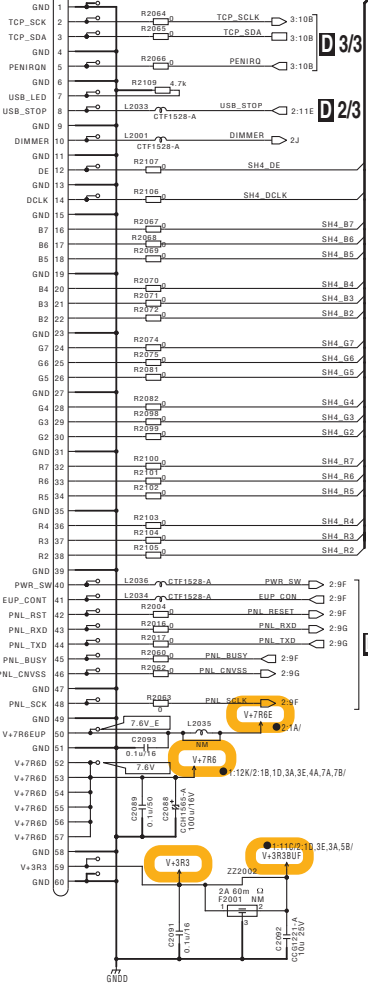
D1/3 LCDB ASSY (DWX3601)

A
B
C
D
E
F

GRADATION BLOCK



CN2004

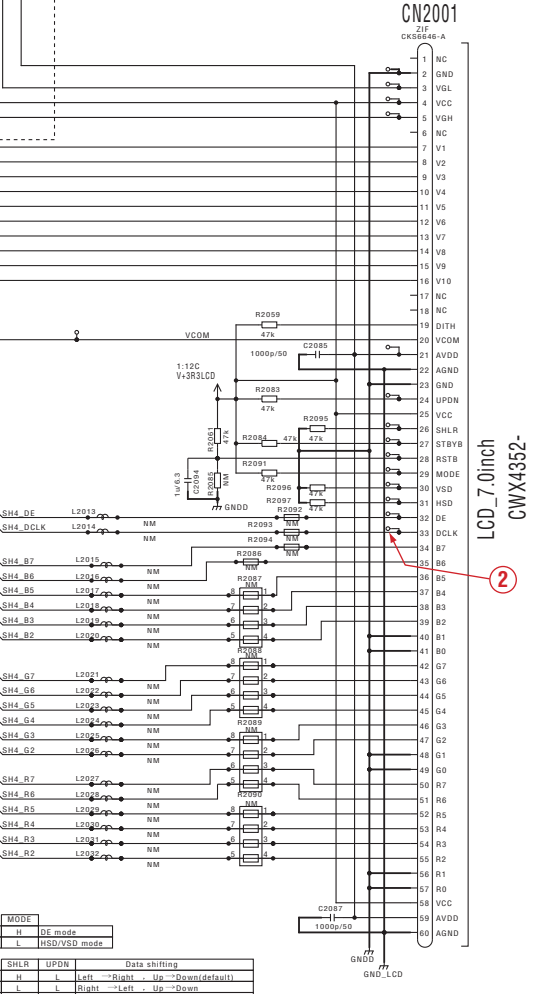


D 3/3

D 2/3

D 2/3

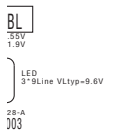
D 2/3



LCD_7.0inch CWX4352-

2

A 5/6 CN706



MODE	
<input type="radio"/> H	DE mode
<input type="radio"/> L	HSD/VSD mode

SHLR	
<input type="radio"/> H	Left
<input type="radio"/> L	Right
UPDN	
<input type="radio"/> H	Up
<input type="radio"/> L	Down

Data shifting	
<input type="radio"/> H	Right
<input type="radio"/> L	Left
<input type="radio"/> H	Down
<input type="radio"/> L	Up
<input type="radio"/> H	Right
<input type="radio"/> L	Left
<input type="radio"/> H	Down
<input type="radio"/> L	Up

REF:2001 ~2600

- NM means STANDBY
- RS1/16SS***J
- RS1/16SS***J
- RS1/4SA***J
- RS1/16SS***F
- RS1/16SS***D
- CKS5Y8 or CKSRY8 or CKS3Y8 or CKS3Y8
- CCS58 or CCSRCH

*CAPACITORS
Indicated in Capacity/Voltage (V)
unless otherwise noted. n: nF, p: pF

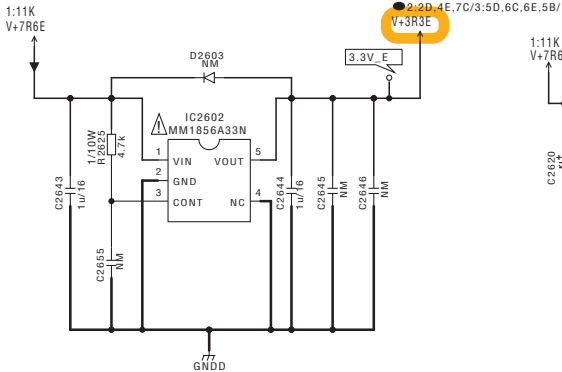
*RESISTORS
Indicated in Ω, ±5% tolerance
unless otherwise noted. k: kΩ, M: MΩ.

The Δ mark found on some component parts indicates the importance of the safety factor of the part. Therefore, when replacing, be sure to use parts of identical designation.

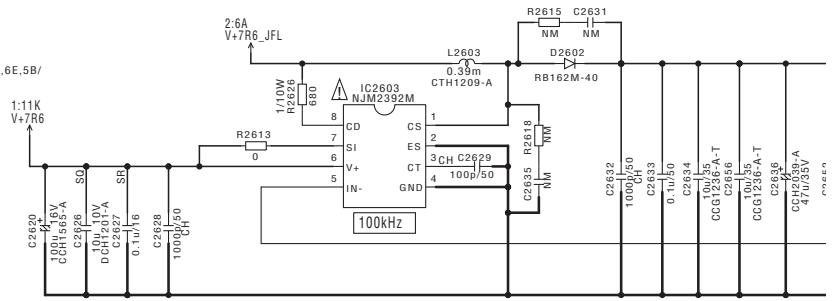
Δ 印の部品は、安全上重要な部品です。交換するときは、安全および性能維持のため必ず指定の部品をご使用ください。

10.9 LCDB ASSY (2/3)

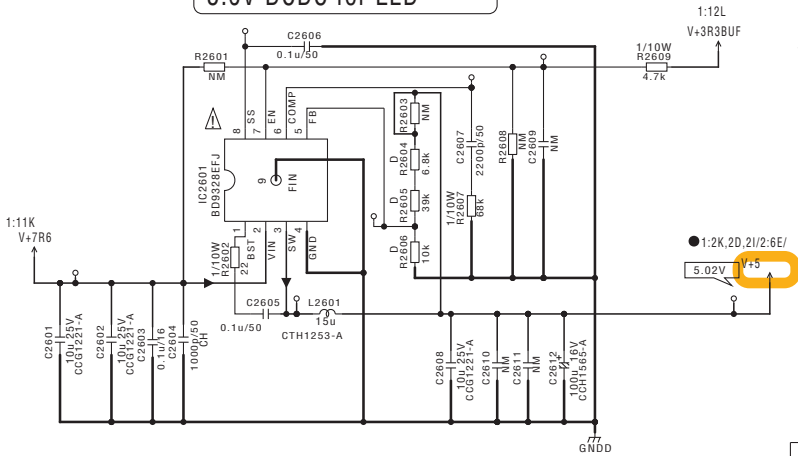
3.3V REG for EVER



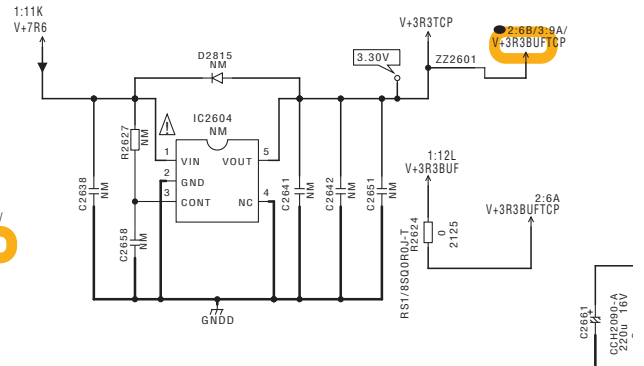
26V DCDC for FL VH



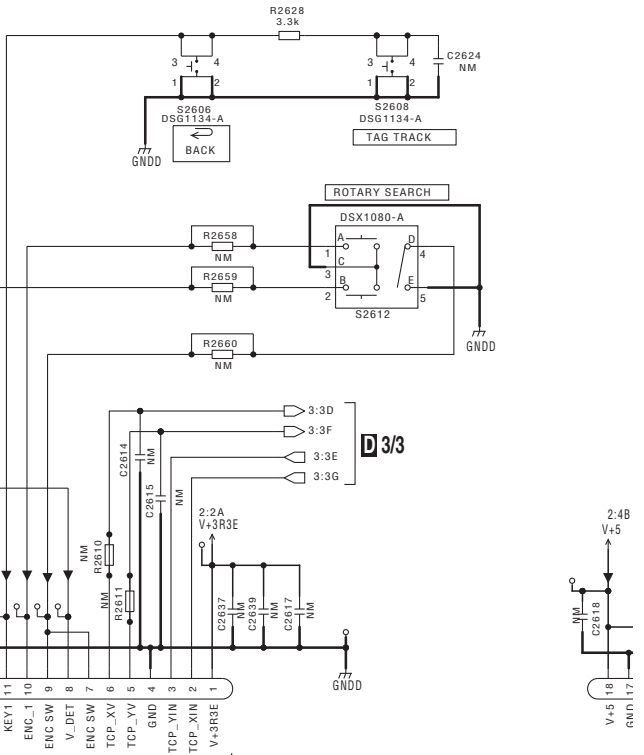
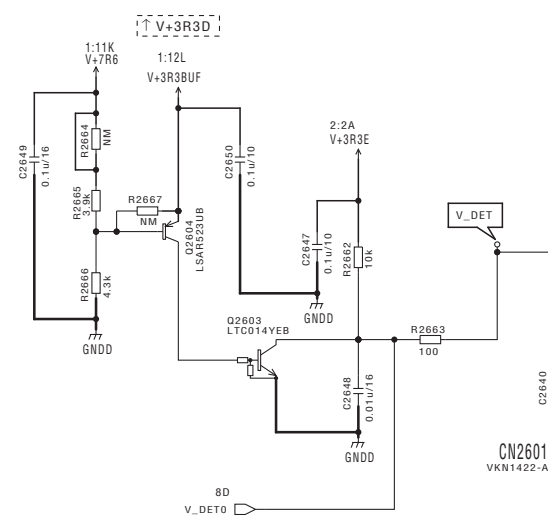
5.0V DCDC for LED



3.3V REG FOR TCP STBY



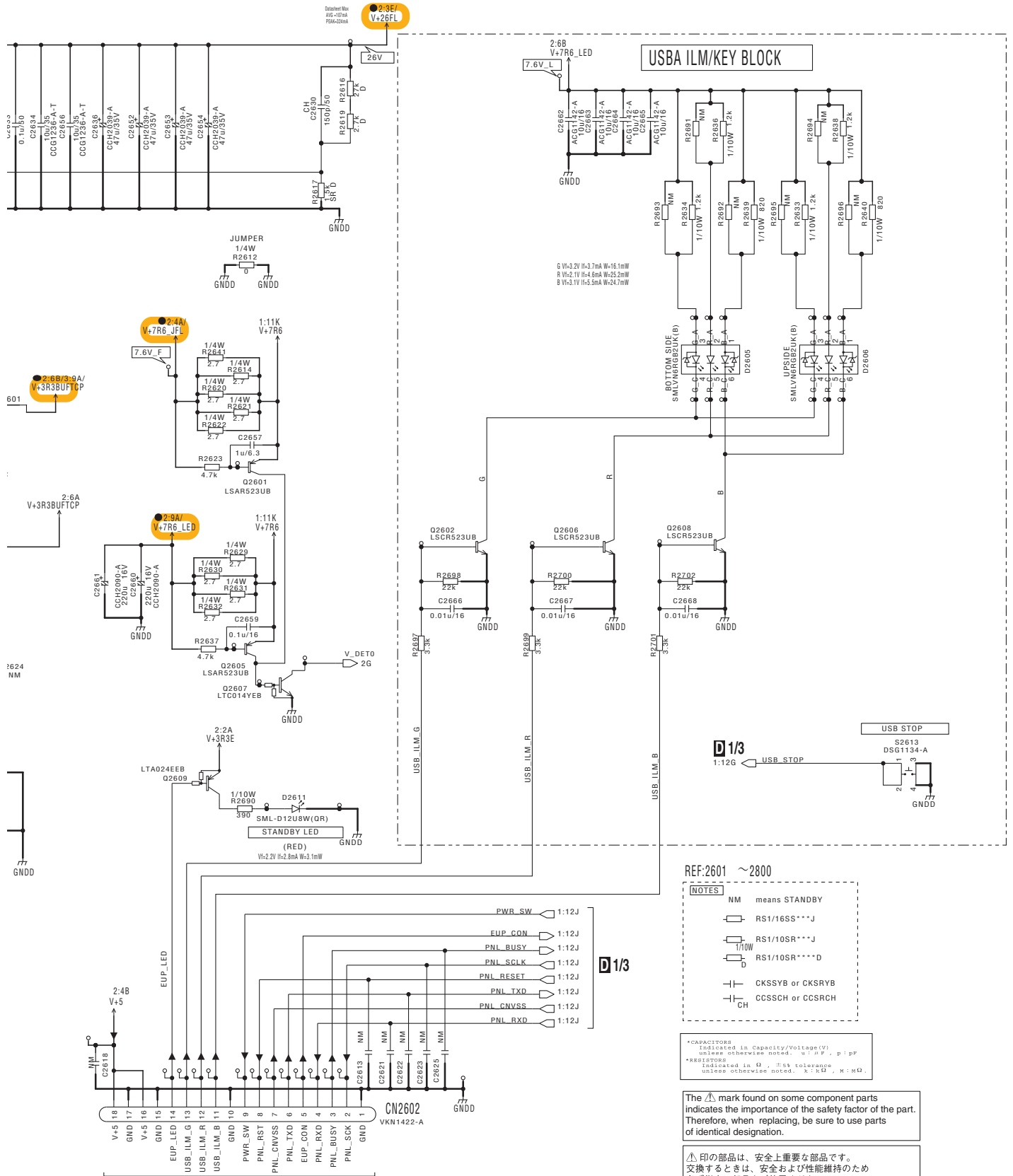
POWER DETECTION CIRCUIT



FN CN8001

D/2/3 LCDB ASSY (DWX3601)

A
B
C
D
E
F



REF:2601 ~2800

- (NOTES)**
- NM means STANDBY
 - RS1/16SS***J
 - RS1/10SR***J
 - RS1/10SR***D
 - CKSSYB or CKSRYB
 - CCSSCH or CCSSCH

*CAPACITORS
Indicated in Capacity/Voltage(V)
unless otherwise noted. u: μF, p: pF

*RESISTORS
Indicated in Ω, % tolerance
unless otherwise noted. K: kΩ, M: MΩ.

The Δ mark found on some component parts indicates the importance of the safety factor of the part. Therefore, when replacing, be sure to use parts of identical designation.

Δ 印の部品は、安全上重要な部品です。交換するときは、安全および性能維持のため必ず指定の部品をご使用ください。

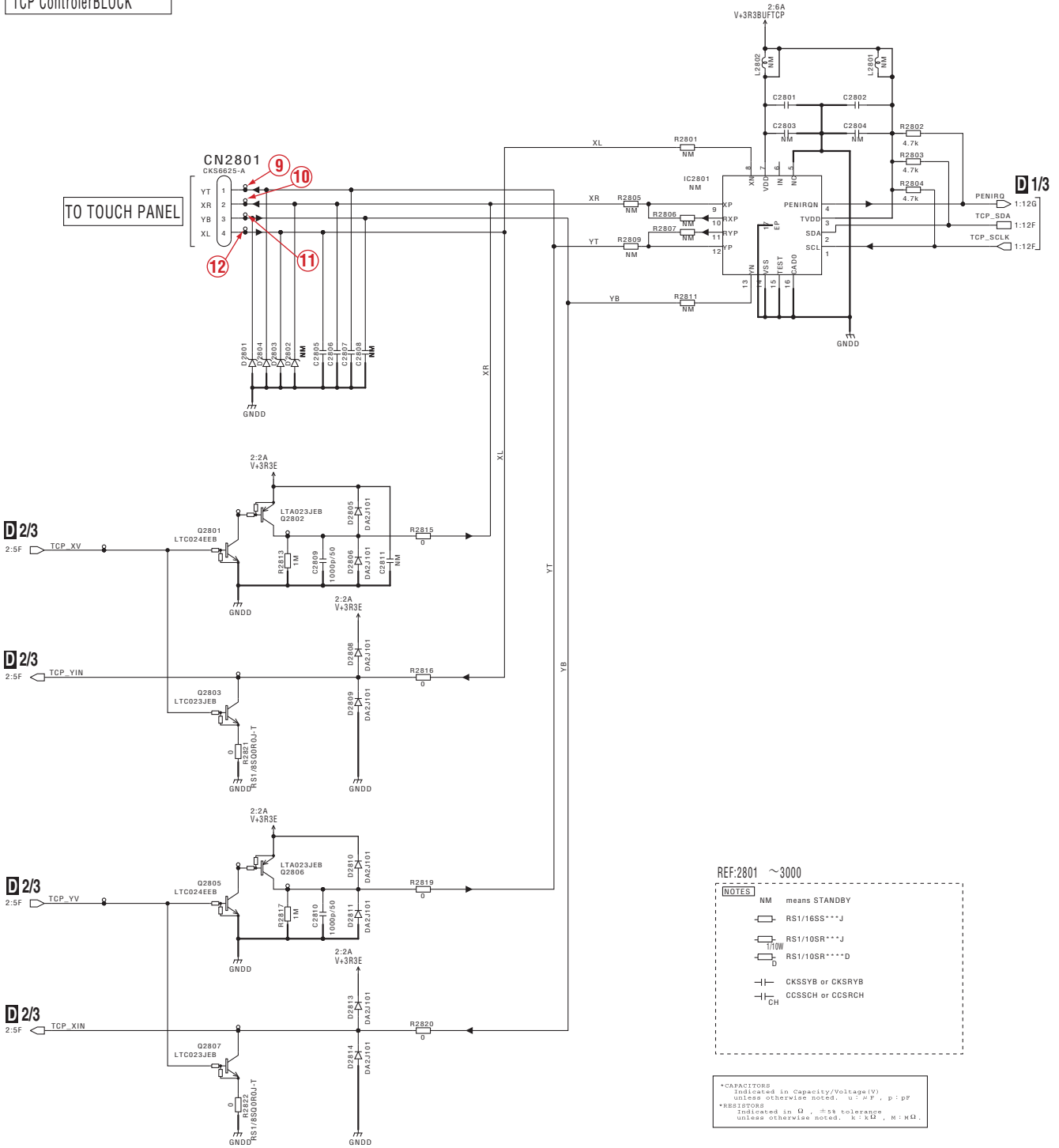
F CN8002

XDJ-1000

10.10 LCDB ASSY (3/3)

D 3/3 LCDB ASSY (DWX3601)

TCP Controller BLOCK



REF:2801 ~3000

NOTES

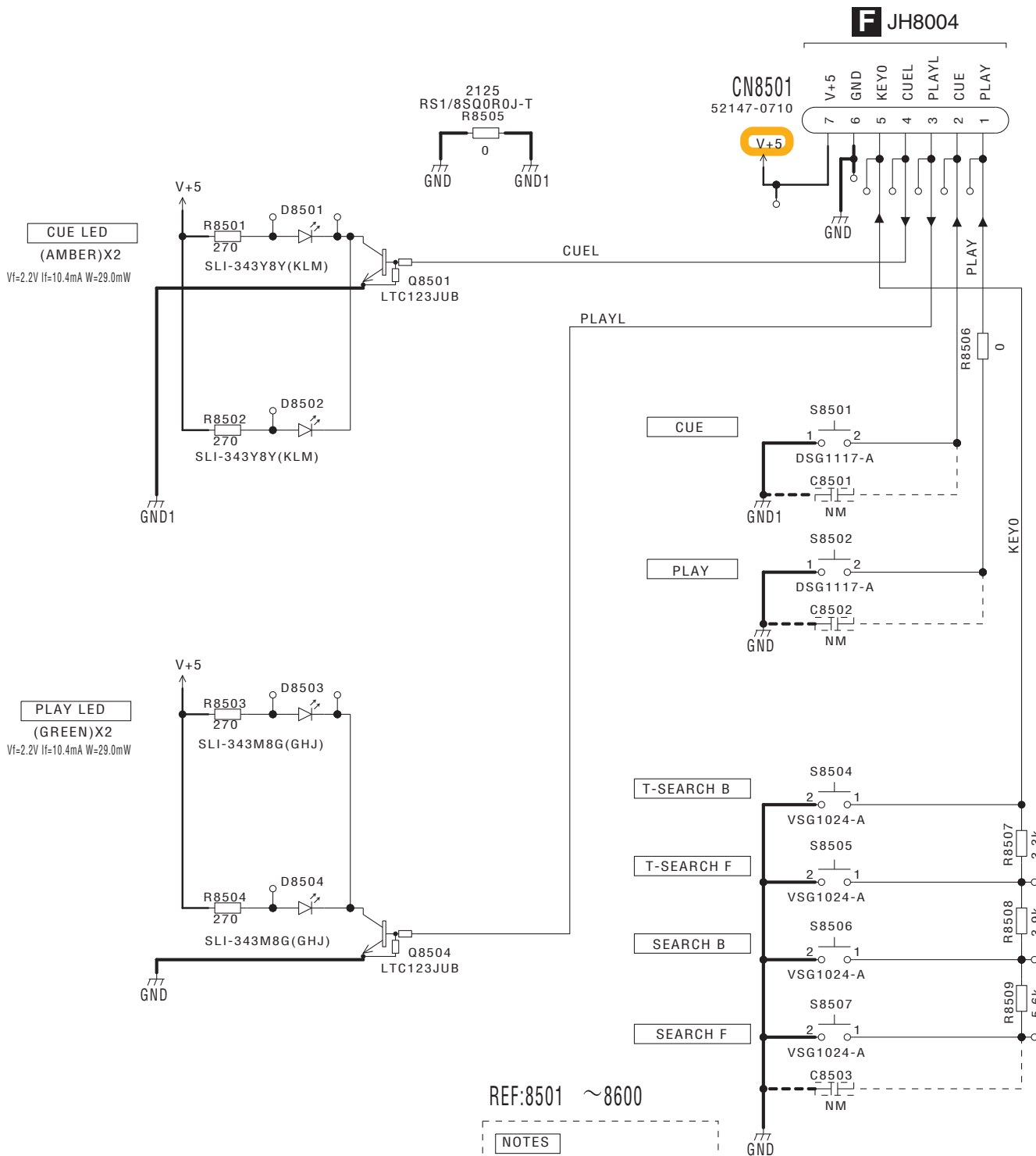
- NM means STANDBY
- RS1/16SS****J
- RS1/10SR****J
- RS1/10SR****D
- CKSSYB or CKSRYB
- CCSSCH or CCSRCH

*CAPACITORS
Indicated in Capacity/Voltage (V)
unless otherwise noted. u: uF, p: pF

*RESISTORS
Indicated in Ω, ±5% tolerance
unless otherwise noted. K: kΩ, M: MΩ.

10.11 KSWB ASSY

KSWB ASSY (DWX3604)



REF:8501 ~ 8600

NOTES

NM means STANDBY

RS1/10SR***J

*CAPACITORS
Indicated in Capacity/Voltage(V)
unless otherwise noted. u: μF, p: pF

*RESISTORS
Indicated in Ω, ±5% tolerance
unless otherwise noted. K: KΩ, M: MΩ

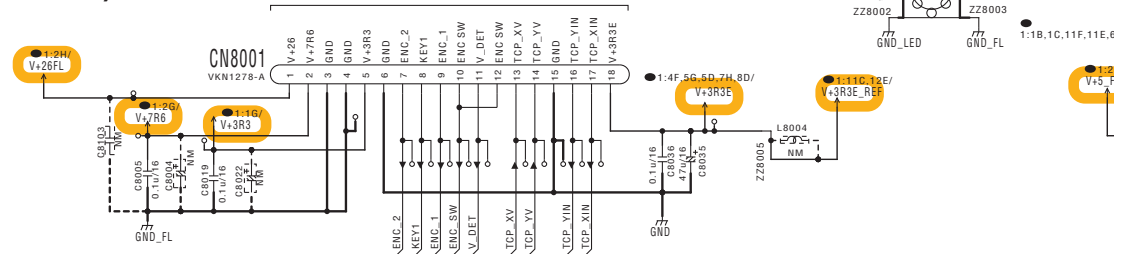


10.12 PNLB and SLDB ASSYS

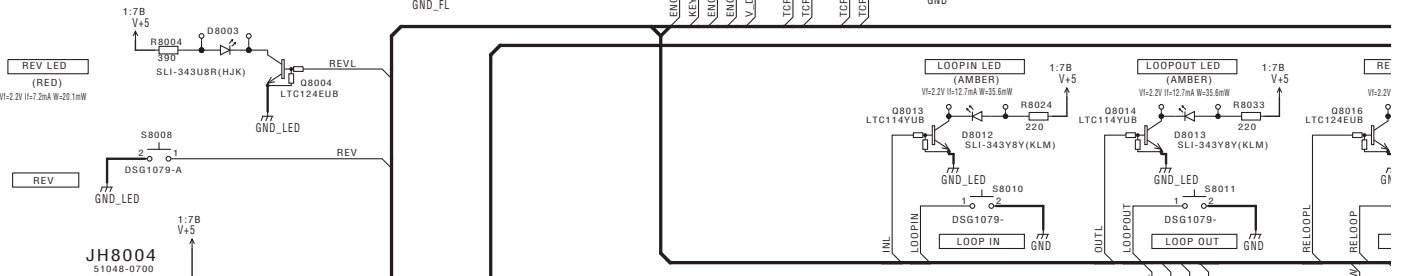
F PNLB ASSY (DWX3603)

D 2/3 CN2601

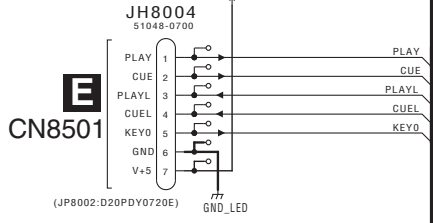
A



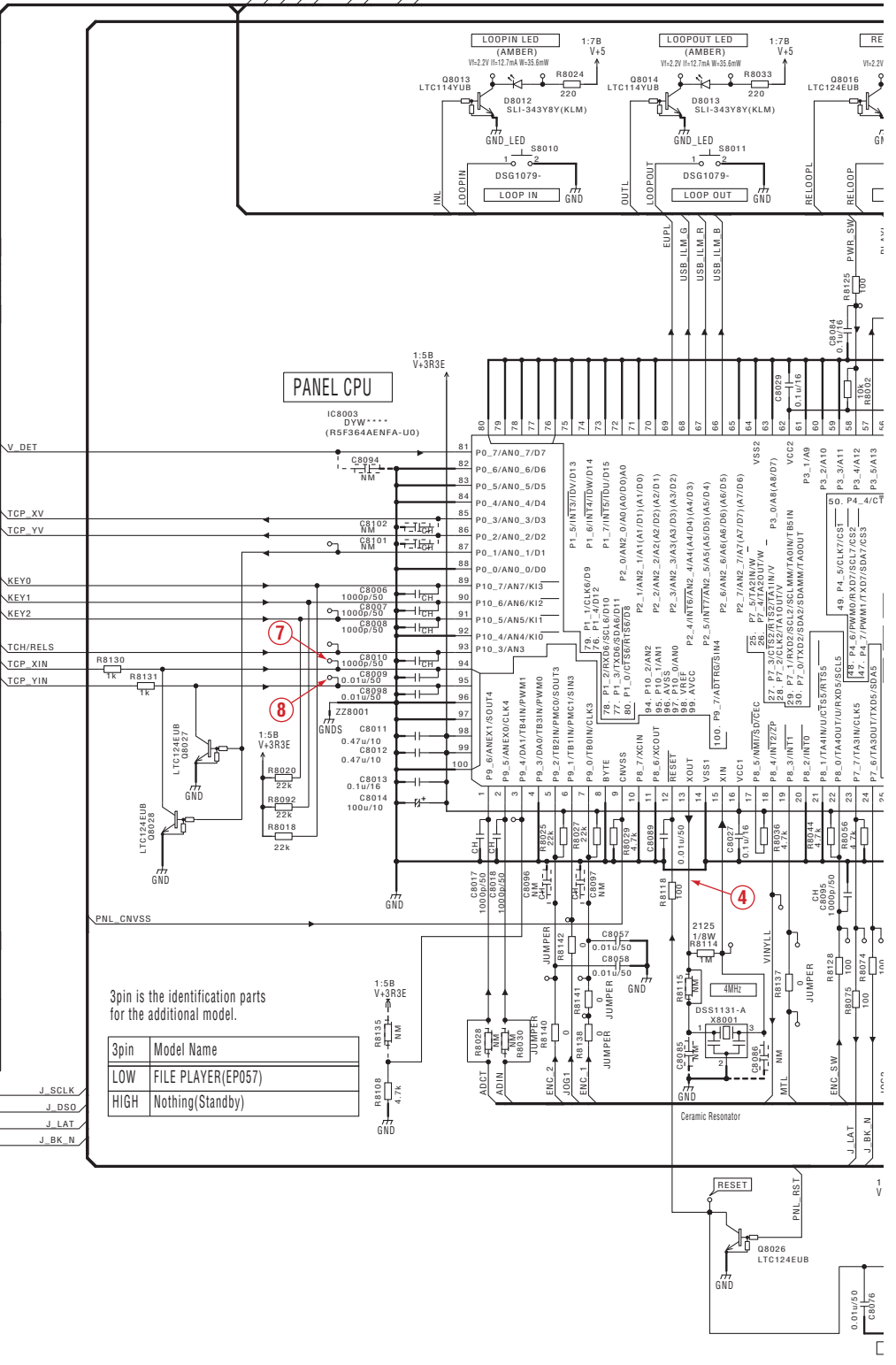
B



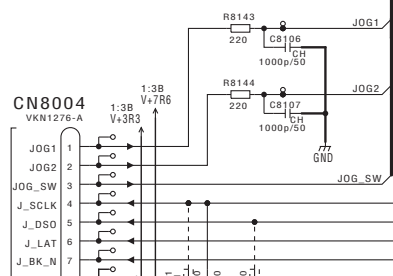
C



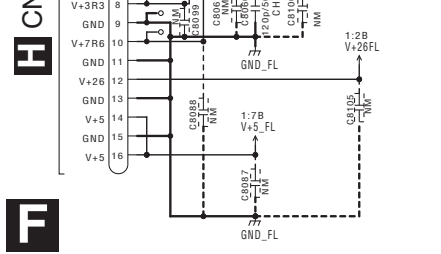
D



E



F



3pin is the identification parts for the additional model.

3pin	Model Name
LOW	FILE PLAYER(EPOS7)
HIGH	Nothing(Standby)

1

2

3

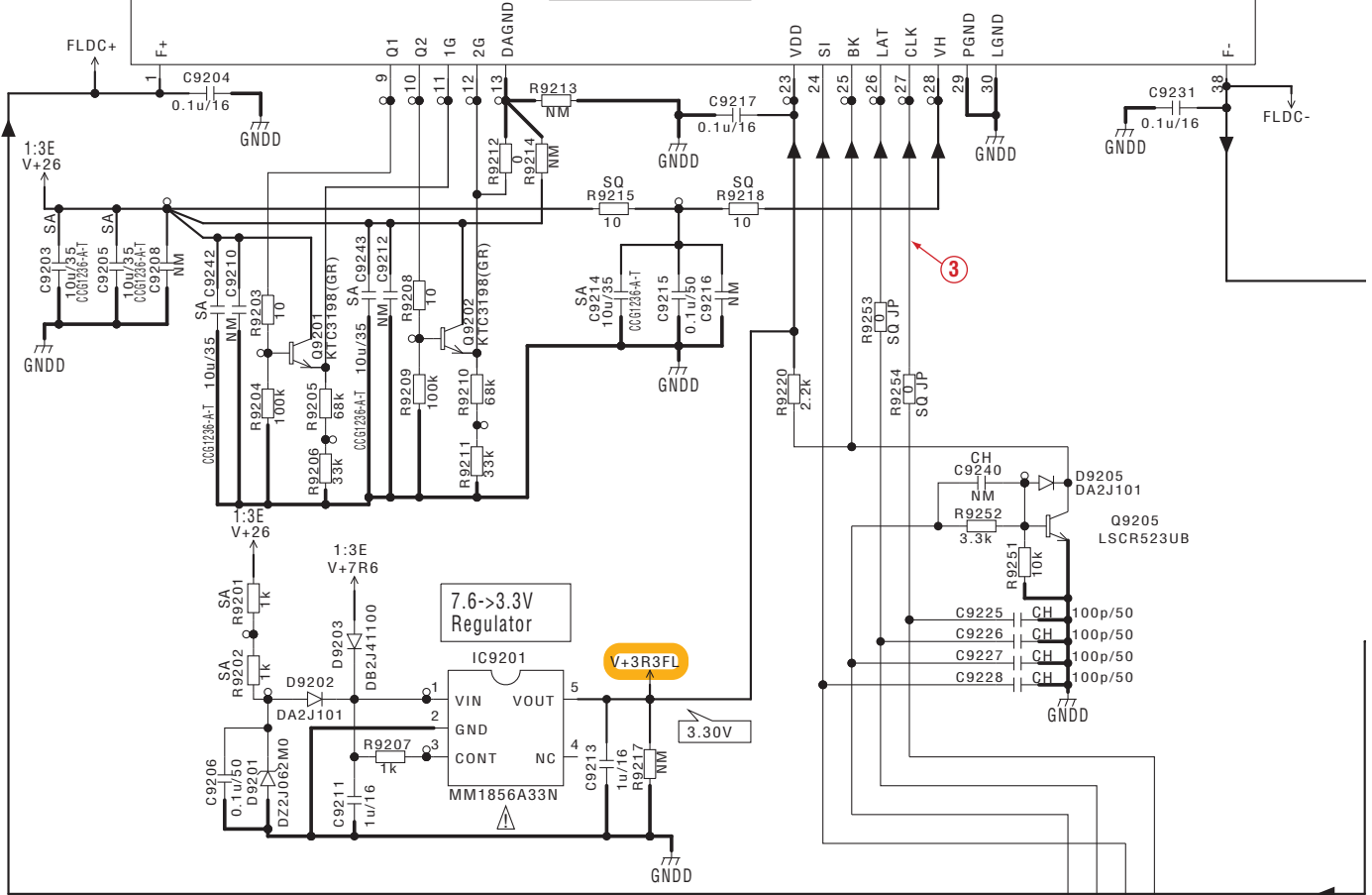
4

10.13 JFLB and JOGB ASSYS

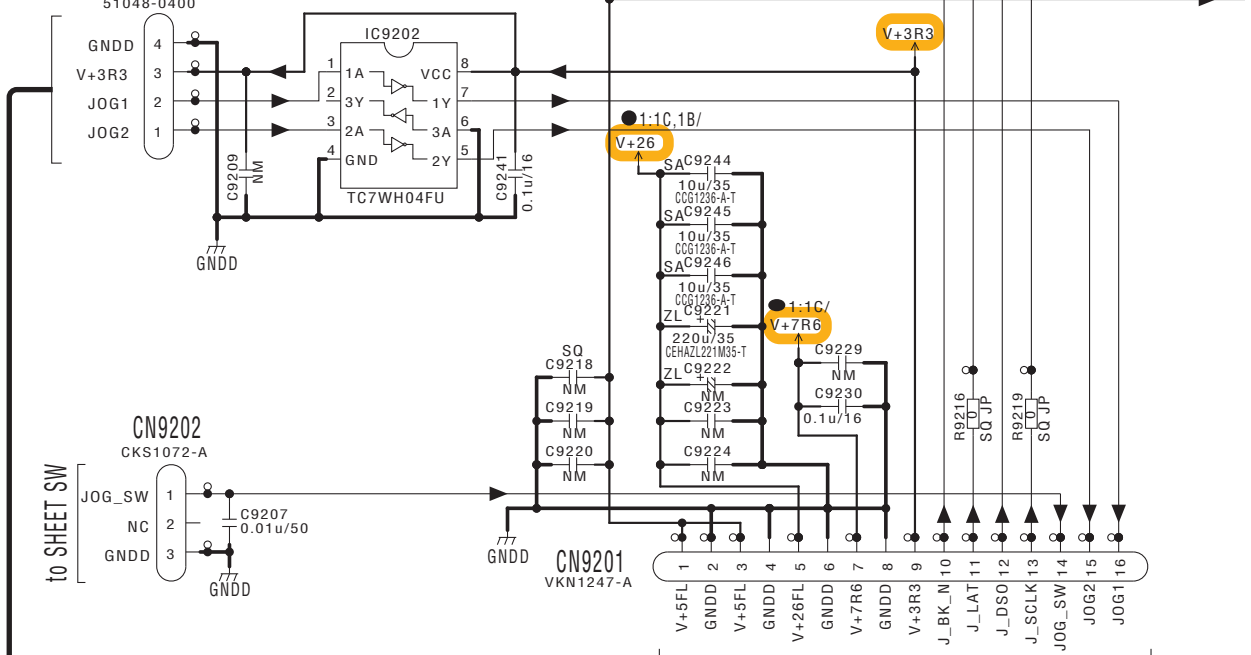
V9201
DEL1074-A

FL HOLDER
DNF1735-
Both Side Tape
Z12-016 (*Use 2pics)

JOG FL



JUMPER WIRE
JP9201:D20PY0405E
JH9201
51048-0400

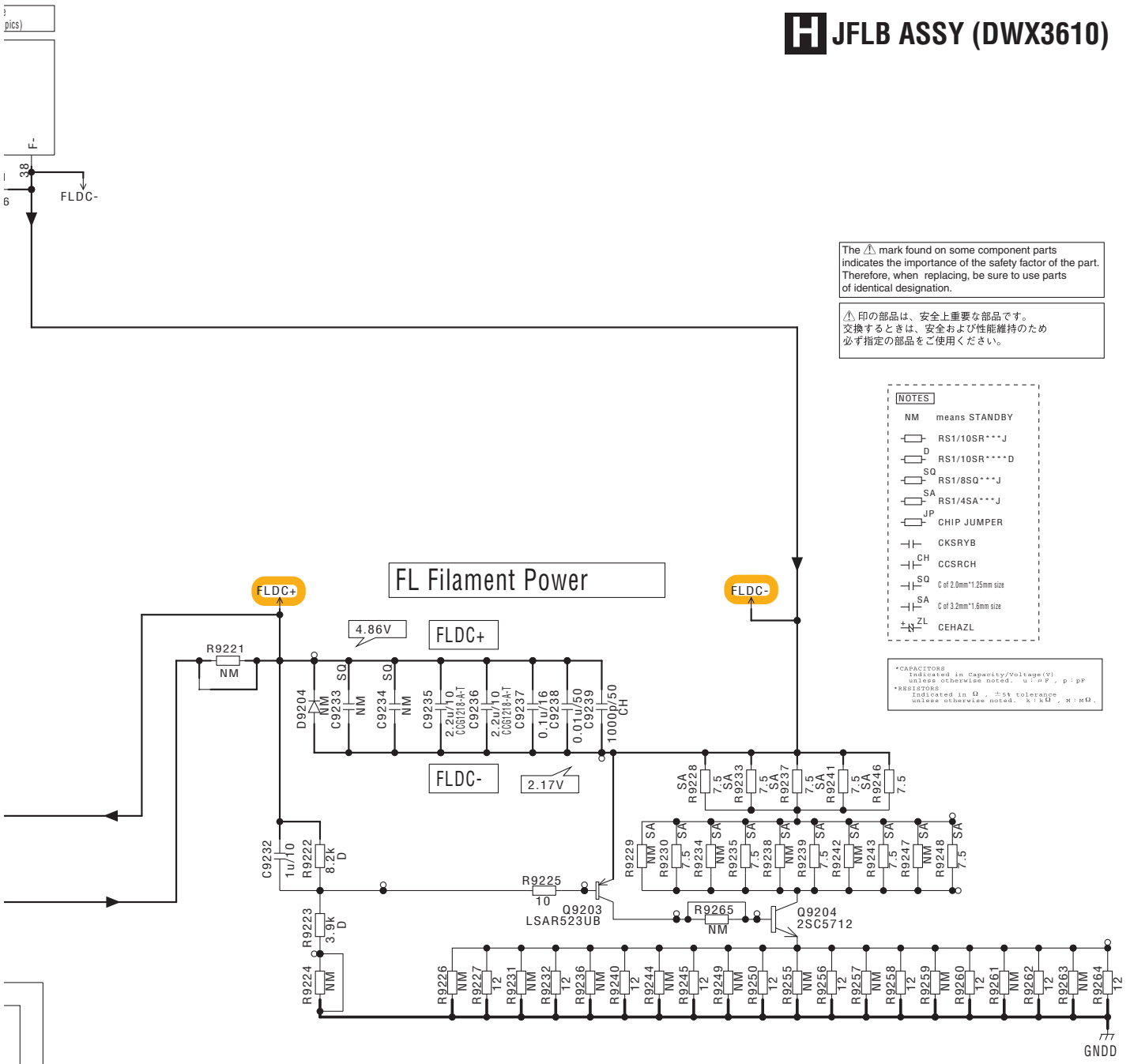


CN8004

XDJ-1000



JFLB ASSY (DWX3610)

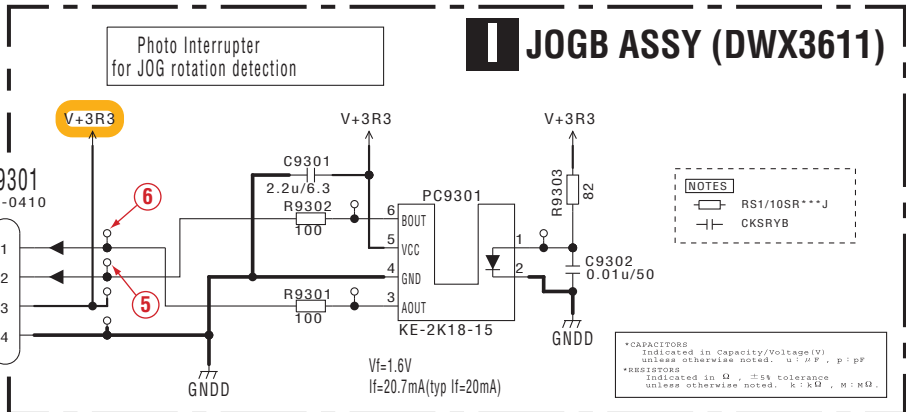


The Δ mark found on some component parts indicates the importance of the safety factor of the part. Therefore, when replacing, be sure to use parts of identical designation.

Δ 印の部品は、安全上重要な部品です。交換するときは、安全および性能維持のため必ず指定の部品をご使用ください。

- NOTES**
- NM means STANDBY
 - RS1/10SR***J
 - RS1/10SR****D
 - RS1/8SQ***J
 - RS1/4SA***J
 - JP CHIP JUMPER
 - CKSRYB
 - CCSRCH
 - C of 2.0mm*1.25mm size
 - C of 3.2mm*1.6mm size
 - CEHAZL

*CAPACITORS Indicated in Capacity/Voltage(V) unless otherwise noted. u//p, p//p
 **RESISTORS Indicated in Ω , $\pm 5\%$ tolerance unless otherwise noted. k//k Ω , M//M Ω .



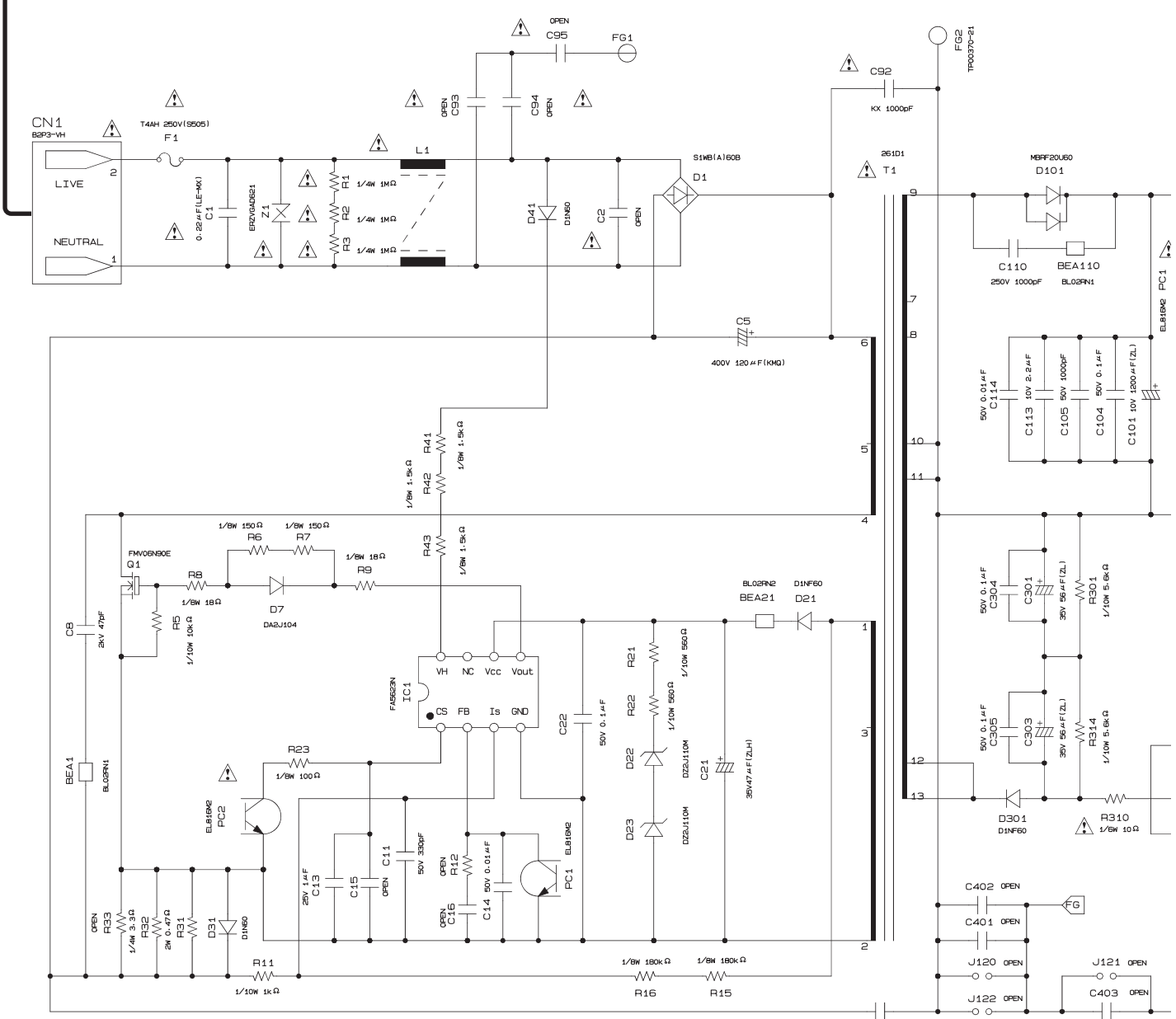
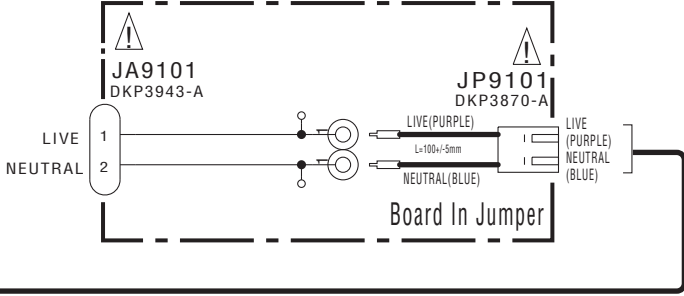
- NOTES**
- RS1/10SR***J
 - CKSRYB

*CAPACITORS Indicated in Capacity/Voltage(V) unless otherwise noted. u//p, p//p
 **RESISTORS Indicated in Ω , $\pm 5\%$ tolerance unless otherwise noted. k//k Ω , M//M Ω .



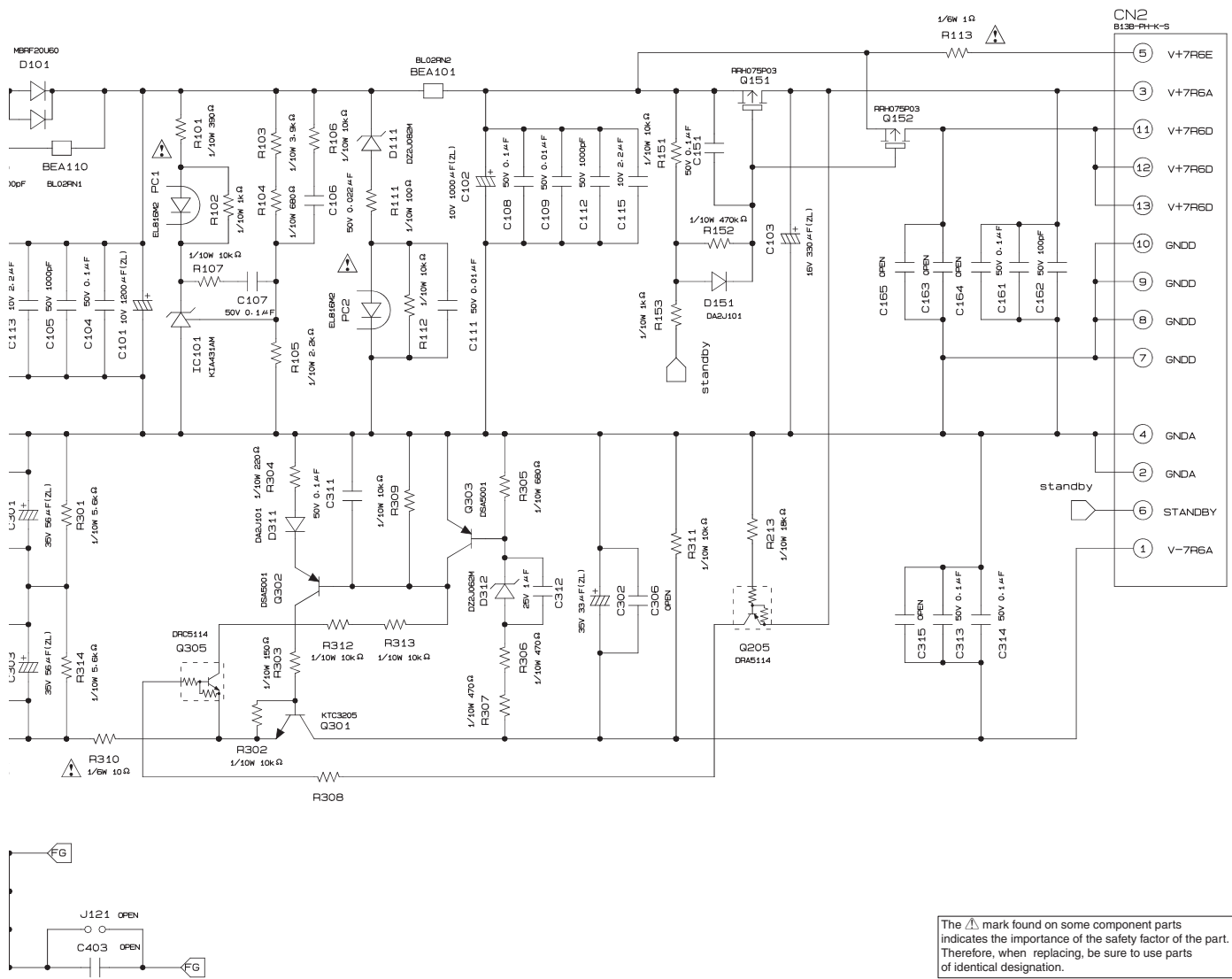
10.14 ACIN ASSY and SW POWER SUPPLY

J ACIN ASSY (DWX3609)



• NOTE FOR FUSE REPLACEMENT
**CAUTION - FOR CONTINUED PROTECTION AGAINST RISK OF FIRE,
 REPLACE WITH SAME TYPE AND RATINGS OF FUSE.**

SW POWER SUPPLY (DWR1545)



The \triangle mark found on some component parts indicates the importance of the safety factor of the part. Therefore, when replacing, be sure to use parts of identical designation.

\triangle 印の部品は、安全上重要な部品です。交換するときは、安全および性能維持のため必ず指定の部品をご使用ください。

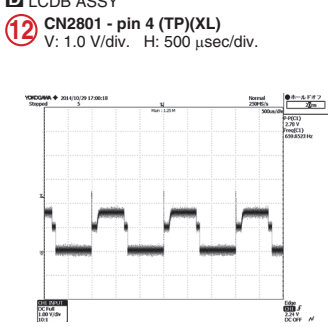
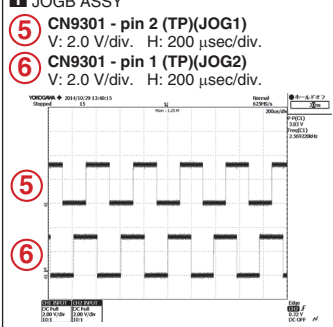
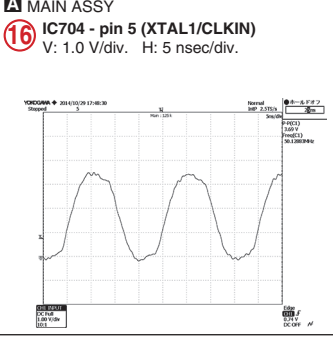
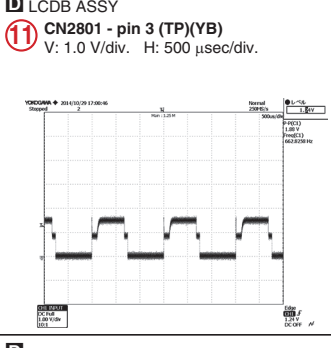
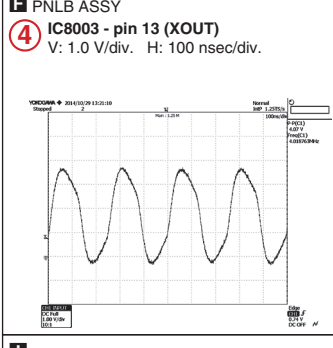
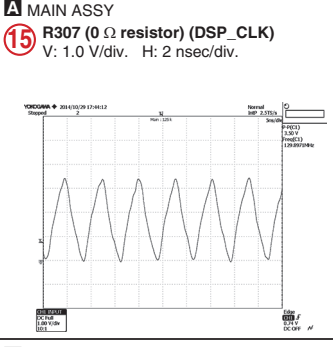
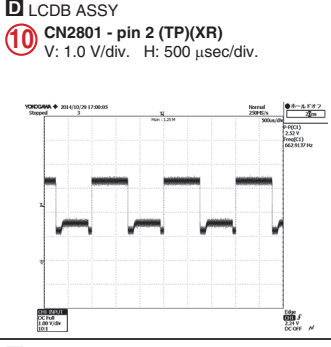
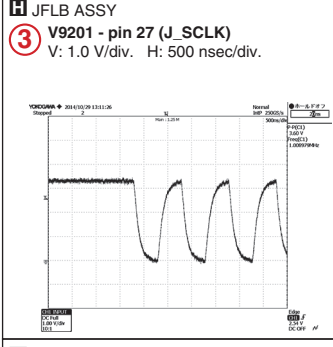
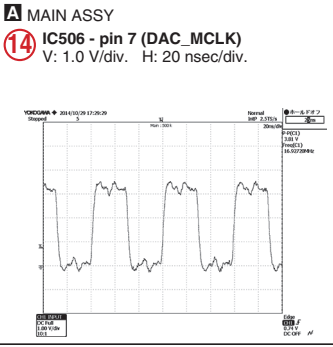
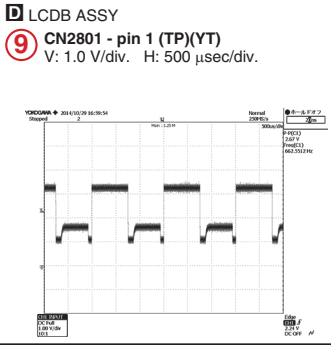
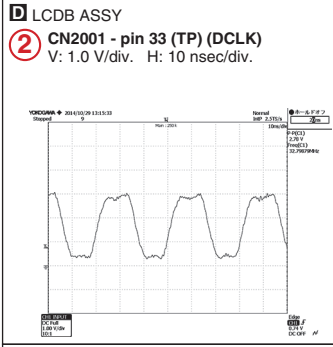
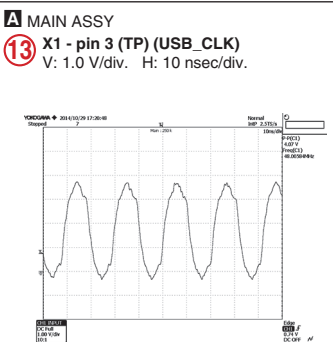
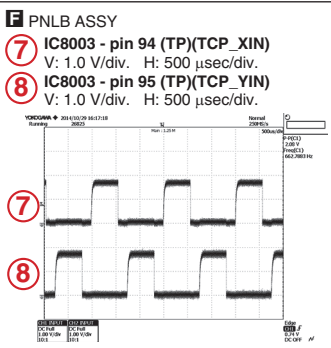
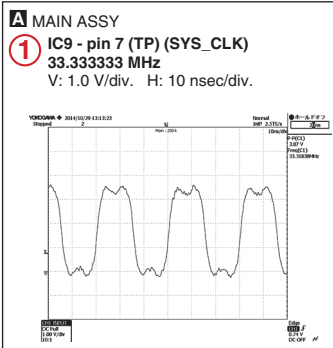
A 5/6 CN705



10.15 WAVEFORMS

A 注意: ○で囲まれた数字は回路図及びPCB図の各測定ポイントの番号を示します。

NOTE: The encircled numbers denote measuring point in the schematic diagram and PCB diagram.



12. PCB PARTS LIST

NOTES: ● Parts marked by "NSP" are generally unavailable because they are not in our Master Spare Parts List.

● The Δ mark found on some component parts indicates the importance of the safety factor of the part. Therefore, when replacing, be sure to use parts of identical designation.

● When ordering resistors, first convert resistance values into code form as shown in the following examples.

Ex.1 When there are 2 effective digits (any digit apart from 0), such as 560 ohm and 47 k ohm (tolerance is shown by J = 5%, and K = 10%).

560 Ω \rightarrow 56 $\times 10^1$ \rightarrow 561 RD1/APU $\boxed{5}$ $\boxed{6}$ $\boxed{7}$ J
47 k Ω \rightarrow 47 $\times 10^3$ \rightarrow 473 RD1/APU $\boxed{4}$ $\boxed{7}$ $\boxed{3}$ J
0.5 Ω \rightarrow R50 RN2H \boxed{R} $\boxed{5}$ $\boxed{0}$ K
1 Ω \rightarrow 1R0 RSIP $\boxed{7}$ \boxed{R} $\boxed{0}$ K

Ex.2 When there are 3 effective digits (such as in high precision metal film resistors).

5.62 k Ω \rightarrow 562 $\times 10^1$ \rightarrow 5621 RN1/4PC $\boxed{5}$ $\boxed{6}$ $\boxed{2}$ $\boxed{1}$ F

Mark No.	Description	Part No.	Mark No.	Description	Part No.
LIST OF ASSEMBLIES					
	1..MAIN ASSY	DWX3600	Q 1		RTQ045N03
	1..LCDB ASSY	DWX3601	Q 2,703,707,902		LTC024EEB
			Q 701,709,710,901		LSCR523UB
NSP	1..PNLA ASSY	DWM2546	Q 702,704,708,907		LTA024EEB
	2..PNLB ASSY	DWX3603	Q 705		RN1903
	2..KSWB ASSY	DWX3604	Q 706		RTQ040P02
	2..SLDB ASSY	DWX3605	Q 903,908		LTC024EEB
	2..ACIN ASSY	DWX3609	Q 904,905		LSCR523UB
NSP	1..JFLA ASSY	DWM2547	Q 909,910		INC2002AC1
	2..USBA ASSY	DWX3607	D 1,501,701		DA2J101
	2..JFLB ASSY	DWX3610	D 704,710		DZ2J051M0
	2..J0GB ASSY	DWX3611	D 901-905		DA2J101
	2..JKSW ASSY	DWX3612	MISCELLANEOUS		
Δ	SW POWER SUPPLY	DWR1545	L 1,2	INDUCTOR	CTF1394
			L 6	CHIP BEEDS FILTER	BTX1047
			L 302,305,721	CHIP BEADS	VTL1128
			L 701	INDUCTOR	CTH1253
			L 703	SMD SPL INDUCTOR	CTH1527
			L 704-708,710-720	CHIP BEADS	VTL1126
			L 709	CHOKE COIL	CTH1487
			L 722,728,729	CHIP BEADS	VTL1126
			L 723-725	FERRITE BEAD	CTF1528
			L 730,731	CHOKE COIL	ATH7098
			L 732,733	COIL	ATH7015
			L 901,902	CHIP SOLID INDUCTOR	XTL3010
			F 2,3,6,702	EMI FILTER	CCG1352
			F 701	EMI FILTER	DTL1106
			JA 701	USB CONNECTOR	DKN1237
			JA 702	RJ45 CONNECTOR	AKN7115
			X 1	CRYSTAL OSCILLATOR (48 MHz)	DSS1213
			X 2	CRYSTAL RESONATOR (33.333333 MHz)	CSS1825
			X 501	OSCILLATOR (16.9344 MHz)	CWX3849
			X 701	CRYSTAL OSCILLATOR (50 MHz)	DSS1209
			CN 701	CONNECTOR	AKM1276
			CN 705	CONNECTOR	AKM1284
			CN 706	FFC/FPC CONNECTOR	CKS6543
			CN 901	12P CONNECTOR	VKN1416
			NSP 6201	ID LABEL ASSY	AXW7015- -J
			RESISTORS		
			R 3,20		RS1/16SS82R0F
			R 11,12,18,27		RAB4CQ330J
			R 41,81-88		RAB4CQ220J
			R 99-103,105,107		RAB4CQ220J
			R 104		RS1/16SS4300D
			R 109,111,114,119		RAB4CQ220J

Mark	No.	Description	Part No.	Mark	No.	Description	Part No.
R	116,117		RS1/16SS5601F				
R	133,301-304,324		RAB4CQ220J	C	117,755		CKSSYB223K16
R	306,740,762,763		RS1/10SR0R0J	C	118-123,127-129		CCSSCH102J50
R	326,327,330,331		RAB4CQ221J	C	130,140,338,340		DCH1201
				C	131,132,502,508		CCSSCH102J50
R	328,329,753,807		RAB4CQ220J	C	134		CKSSYB222K50
R	702,831,832		RS1/4SAOR0J				
R	709,770		RS1/16SS2702F	C	135,734,735		CKSRYP104K50
R	723		RS1/10SR104J	C	136-138,141,142		CKSSYB104K10
R	725,738,757		RS1/10SR220J	C	145,148-151,153		CKSSYB104K10
				C	146,167,168		CKSSYB102K50
R	730		RS1/16SS1002D	C	152,701,805,806		CCSSCH220J50
R	731		RS1/16SS1501F				
R	732-735		RS1/10SR49R9F	C	157-159,165,166		CKSSYB104K10
R	741		RS1/10SR1100D	C	301-316,343		CKSSYB103K16
R	742		RS1/10SR4702D	C	319,324,342,511		CKSSYB104K10
				C	325-337		CKSSYB102K50
R	743		RS1/10SR1002D	C	344,509,513,515		CCSSCH101J50
R	748-750,806		RAB4CQ221J				
R	754,791		RS1/16SS1002F	C	345-349,352,353		CKSSYB103K16
R	761		RS1/10SR223J	C	501,506,910		CKSSYB104K16
R	771		RS1/16SS5602F	C	503		CKSRYP474K10
				C	504,736,949		CKSRYP103K50
R	773		RS1/10SR472J	C	507,752,753,763		CKSSYB103K16
R	774		RS1/10SR331J				
R	780,910,931		RS1/10SR0R0J	C	512,514,750,775		CCSSCH102J50
R	787		RS1/10SR102J	C	547,556,706,710		CKSSYB104K10
R	789		RS1/16SS3301F	C	702,719,737,773		CCG1221
				C	703,712		CCSSCH221J50
R	790		RS1/16SS5600F	C	707		CKSSYB333K16
R	812,815,816		RAB4CQ220J				
R	834		RS1/10SR182J	C	708,709,768,915		ACG1142
R	924		RS1/10SR103J	C	713-715,718,722		CKSSYB104K10
R	932,933		RN1/16SE3902D	C	717		CKSSYB471K50
				C	720		CKSQYB475K6R3
R	934,935		RN1/16SE2200D	C	721		CKSRYP225K6R3
R	936,937,940,941		RN1/16SE2201D				
R	938,939		RN1/16SE3301D	C	727		CKSRYP223K50
R	943,944		RN1/16SE2201D	C	728		CKSRYP104K16
Other Resistors			RS1/16SS###J	C	729,730,740,756		DCH1201
				C	731,732,742-745		CKSSYB104K10
				C	733,913,917,918		CCSRCH102J50
				C	739,749,762,767		CCH1565
				C	746,747		CFHXSP104J16
				C	748,759		DCH1341
				C	758,764,765,905		DCH1201
				C	760,761,777,790		CKSSYB104K10
				C	766		CEHVAW101M6R3
				C	769-772,912,914		CKSRYP104K50
				C	774,785		CCG1221
				C	778-780,901,908		CKSSYB103K16
				C	781,947,952		CCSSCH102J50
				C	783		CKSSYB183K16
				C	784,904,951		CCSSCH101J50
				C	788,791,903,907		CCH1565
				C	792,793,944		CCSRCH101J50
				C	796,797,906		CFHXSQ472J16
				C	798-801		CKSSYB104K10
				C	807,808		CCSRCK2R0C50
				C	815		CCH2090
				C	902,911		CEHVAW470M16
				C	909		DCH1201
				C	916		ACG1142
				C	921,922		CEHVAW101M16
				C	925,926		CCSRCH681J50
				C	927,928		CCSRCH561J50
				C	97,98		CCSSCH9R0D50
				C	99-101,103-105		CKSSYB104K10
				C	107,716,802		CKSRYP105K10
				C	108,339		CEHVAW221M6R3
				C	115,124-126,133		CKSSYB104K10

CAPACITORS

C	1,2,5,10		CKSSYB104K10				
C	3,6,7,14		CKSSYB102K50	C	739,749,762,767		CCH1565
C	4,8,9		CKSSYB103K16	C	746,747		CFHXSP104J16
C	11-13,30,36		CKSSYB103K16	C	748,759		DCH1341
C	15,18,20,22		CKSSYB104K10	C	758,764,765,905		DCH1201
				C	760,761,777,790		CKSSYB104K10
C	16,17,19,21		CKSSYB102K50	C	766		CEHVAW101M6R3
C	23,80,81,83		DCH1201	C	769-772,912,914		CKSRYP104K50
C	24,31,34,37		CKSSYB102K50	C	774,785		CCG1221
C	25-29,32,33		CKSSYB104K10	C	778-780,901,908		CKSSYB103K16
C	35,38,40-42		CKSSYB104K10	C	781,947,952		CCSSCH102J50
C	39,46,51,55		CKSSYB102K50	C	783		CKSSYB183K16
C	43,49,52,54		CKSSYB103K16	C	784,904,951		CCSSCH101J50
C	44,45,47,48		CKSSYB104K10	C	788,791,903,907		CCH1565
C	50,53,56-62		CKSSYB104K10	C	792,793,944		CCSRCH101J50
C	63,71,72,144		CKSSYB102K50	C	796,797,906		CFHXSQ472J16
C	64-69,74-79		CKSSYB104K10	C	798-801		CKSSYB104K10
C	70,73,143,147		CKSSYB103K16	C	807,808		CCSRCK2R0C50
C	82,84,86,93		CKSSYB104K10	C	815		CCH2090
C	85,87-92		CCSSCH102J50	C	902,911		CEHVAW470M16
C	94,106,110-114		DCH1201	C	909		DCH1201
C	97,98		CCSSCH9R0D50	C	916		ACG1142
C	99-101,103-105		CKSSYB104K10	C	921,922		CEHVAW101M16
C	107,716,802		CKSRYP105K10	C	925,926		CCSRCH681J50
C	108,339		CEHVAW221M6R3	C	927,928		CCSRCH561J50
C	115,124-126,133		CKSSYB104K10				

Mark	No.	Description	Part No.
	C	929,932	CCH1565
A	C	936,938,939,943	CFHXSQ103J16
	C	940	CKSRYB105K16
	C	942	CKSRYB104K50

Mark	No.	Description	Part No.
	D	2805,2806,2808-2811	DA2J101

D	2813,2814	DA2J101
---	-----------	---------

MISCELLANEOUS

L	2001,2033,2034	FERRITE BEAD	CTF1528
L	2005	INDUCTOR	CTF1545
L	2006	POWER INDUCTOR	ATH7068
L	2007	CHOKE COIL	CTH1426
L	2008	INDUCTOR	CTF1635

B USBA ASSY

MISCELLANEOUS

JA 8801	USB JACK	DKN1658
CN 8801	L-PLUG (5P)	KM200NA5L

CAPACITORS

C	8802	CCSRCH4R0C50
---	------	--------------

L	2009,2010	CHIP INDUCTOR(10U)	DTL1105
L	2011	CHIP BEEDS FILTER	BTX1042
L	2012	INDUCTOR	LCTAW101J2520
L	2036	FERRITE BEAD	CTF1528
L	2601	INDUCTOR	CTH1253

C JKSW ASSY

SEMICONDUCTORS

Q	9401-9404	INC2002AC1
D	9405,9406,9408	DZ2J062M0
D	9411	DA2J101
D	9410	DB2J41100

L	2603	CHOKE COIL	CTH1209
S	2606,2608,2613	TACT SWITCH	DSG1134
S	2612	ENCODER SW	DSX1080
CN	2001	FFC/FPC CONNECTOR	CKS6646
CN	2003	CONNECTOR	CKS4428

MISCELLANEOUS

JA 9401	RCA JACK/2P	DKB1114	
JA 9402	JACK	VKB1243	
S	9451	PUSH SW	ASG1102
CN	9401	12P CONNECTOR	VKN1272

RESISTORS

R	2001,2002	RS1/16SS1300D
R	2008	RS1/16SS3603D
R	2009	RS1/16SS6802D
R	2010	RS1/16SS3901D
R	2014	RS1/16SS5100F

RESISTORS

R	9401	RS1/4SA182J
	Other Resistors	RS1/10SR###J

CAPACITORS

C	9402,9420	CCSRCH102J50
C	9405,9406	CCH1357
C	9407,9415	CKSRYB103K50
C	9408,9416	CKSRYB104K50
C	9410,9411	DCE1017

R	2018	RS1/16SS3302D
R	2020	RS1/16SS2202D
R	2021	RS1/16SS1103D
R	2022	RS1/16SS1002D
R	2024,2027	RS1/16SS1502D

C	9421,9422	CEAT221M10
---	-----------	------------

R	2026	RS1/16SS8201D
R	2032	RS1/16SS1203D
R	2033	RS1/16SS1602D
R	2034	RS1/10SR0R0J
R	2035	RS1/16SS3303D

D LCDB ASSY

SEMICONDUCTORS

⚠	IC	2001	R1290K103A
⚠	IC	2002	BD81A04EFV-M
⚠	IC	2601	BD9328EFJ
⚠	IC	2602	MM1856A33N
⚠	IC	2603	NJM2392M

R	2036	RS1/16SS5601D
R	2037	RS1/16SS3902D
R	2039,2052,2073	RS1/16SS39R0D
R	2041,2055	RS1/16SS47R0D
R	2045,2053	RS1/16SS75R0F

Q	2001	2SAR502UB
Q	2002,2609	LTA024EEB
Q	2005,2801,2805	LTC024EEB
Q	2601,2604,2605	LSAR523UB
Q	2602,2606,2608	LSCR523UB

R	2051	RS1/16SS51R0D
R	2054,2058	RS1/16SS82R0D
R	2056	RS1/16SS56R0D
R	2057	RS1/16SS1800D
R	2602	RS1/10SR220J

Q	2603,2607	LTC014YEB
Q	2802,2806	LTA023JEB
Q	2803,2807	LTC023JEB
D	2001-2003	DB3S308F0
D	2004	DB2J41100

R	2604	RS1/10SR6801D
R	2605	RS1/10SR3902D
R	2606	RS1/10SR1002D
R	2607	RS1/10SR683J
R	2609,2625	RS1/10SR472J

D	2005	RB060M-30
D	2602	RB162M-40
D	2605,2606	SMLVN6RGB2UK
D	2611	SML-D12U8W

R	2612	RS1/4SA0R0J
R	2614,2620-2622	RS1/4SA2R7J
R	2616	RS1/10SR2702D
R	2617	RS1/10SR1501D
R	2619	RS1/10SR2701D

R	2624,2821,2822	RS1/8SQ0R0J
---	----------------	-------------

Mark	No.	Description	Part No.
R	2626		RS1/10SR681J
R	2629-2632,2641		RS1/4SA2R7J
R	2633,2634,2636,2638		RS1/10SR122J
R	2639,2640		RS1/10SR821J
R	2690		RS1/10SR391J
	Other Resistors		RS1/16SS###J

CAPACITORS

C	2001,2012,2021,2025		CCG1254
C	2002		CKSRYB224K16
C	2004,2024,2039,2065		CKSSYB102K50
C	2005		CKSRYB105K16
C	2006,2018,2094,2657		CKSSYB105K6R3
C	2007,2010		CKSQYB105K25
C	2008,2011,2046-2048		CKSSYB104K10
C	2014,2078,2089,2605		CKSRYB104K50
C	2015,2016		CKSQYB474K25
C	2017,2032,2041-2043		CKSSYB104K16
C	2020		CKSSYB224K6R3
C	2022,2040		CKSYB475K16
C	2023		CCG1218
C	2026		CKSQYB475K6R3
C	2027,2030		CKSSYB332K50
C	2028		CKSSYB561K50
C	2029,2648,2666-2668		CKSSYB103K16
C	2031,2033,2035		CCG1254
C	2034,2036,2070,2086		CCG1236
C	2044,2045		CKSRYB105K10
C	2049		DCH1246
C	2062,2075,2076,2091		CKSSYB104K16
C	2066		CKSQYB225K16
C	2067		CKSSYB103K25
C	2071		CCG1201
C	2073		CCG1234
C	2074		CKSQYB334K50
C	2077,2647,2650		CKSSYB104K10
C	2081,2083,2085,2087		CKSSYB102K50
C	2088,2612,2620		CCH1565
C	2092,2601,2602,2608		CCG1221
C	2093,2603,2627		CKSRYB104K16
C	2604		CCSRCH102J50
C	2606,2633		CKSRYB104K50
C	2607		CKSRYB222K50
C	2626		DCH1201
C	2628,2632		CCSSCH102J50
C	2629		CCSSCH101J50
C	2630		CCSSCH151J50
C	2634,2656		CCG1236
C	2636,2652-2654		CCH2039
C	2643,2644		CKSYB105K16
C	2649,2659		CKSSYB104K16
C	2660,2661		CCH2090
C	2662-2665		ACG1142
C	2809,2810		CKSSYB102K50

**KSWB ASSY
SEMICONDUCTORS**

Q	8501,8504	LTC123JUB
D	8501,8502	SLI-343Y8Y

Mark	No.	Description	Part No.
D	8503,8504		SLI-343M8G
MISCELLANEOUS			
S	8501,8502	TACT SWITCH	DSG1117
S	8504-8507	SWITCH	VSG1024
CN	8501	7P JUMPER CONNECTOR	52147-0710

RESISTORS

R	8505	RS1/8SQ0R0J
	Other Resistors	RS1/10SR###J

**F PNLB ASSY
SEMICONDUCTORS**

IC	8001	PST8430N	A
IC	8003	DYW1851	B
Q	8004,8016,8017,8019	LTC124EUB	
Q	8013,8014	LTC114YUB	
Q	8020,8026-8028	LTC124EUB	
D	8003,8016	SLI-343U8R	
D	8012,8013,8015	SLI-343Y8Y	
D	8017	SLR343BC4T	

MISCELLANEOUS

L	8003	INDUCTOR	CTF1379	
VR	8001	VARIABLE RESISTOR	DCS1045	
S	8008,8010-8012	TACT SWITCH	DSG1079	C
S	8017	TACT SWITCH	DSG1089	
S	80,218,022	SWITCH	VSG1024	
X	8001	CERAMIC RESONATOR (4 MHz)	DSS1131	
CN	8001,8002	18P CONNECTOR	VKN1278	
CN	8004	16P CONNECTOR	VKN1276	
JH	8003,8701	4P CABLE HOLDER	51048-0400	
JH	8004	7P CABLE HOLDER	51048-0700	
JP	8002	JUMPER WIRE	D20PDY0720E	
JP	8003	4PJUMPER WIRE	D20PDD0410E	

RESISTORS

R	8114	RS1/8SQ105J	D
	Other Resistors	RS1/10SR###J	

CAPACITORS

C	8002,8035	CEHAS470M16	
C	8003,8005,8013,8019	CKSRYB104K16	
C	8027,8029,8036,8040	CKSRYB104K16	
C	8075,8084	CKSRYB104K16	
C	8006-8008,8010,8017	CCSRCH102J50	
C	8018,8095,8106,8107	CCSRCH102J50	
C	8009,8046,8047,8057	CKSRYB103K50	E
C	8058,8076,8089,8098	CKSRYB103K50	
C	8011,8012	CKSRYB474K10	
C	8014	CEHAS101M10	
C	8060	CCSRCH121J50	
C	8074	CKSRYB273K16	

**G SLDB ASSY
MISCELLANEOUS**

VR	8701	SLIDE VR	DCV1033	
JH	8701	4P CABLE HOLDER	51048-0400	F

CAPACITORS

C	8702	CEJQ470M16
---	------	------------

Mark	No.	Description	Part No.
	C	8703	CKSRYB104K16

Mark	No.	Description	Part No.
J		ACIN ASSY	
		MISCELLANEOUS	
	⚠	JA 9101 AC INLET/2P	DKP3943
	⚠	JP 9101 CONNECTOR ASSY 2P	DKP3870
K		SW POWER SUPPLY	
		There is no service parts.	

J ACIN ASSY

MISCELLANEOUS

⚠	JA 9101	AC INLET/2P	DKP3943
⚠	JP 9101	CONNECTOR ASSY 2P	DKP3870

K SW POWER SUPPLY

There is no service parts.

H JFLB ASSY

SEMICONDUCTORS

IC	9201	MM1856A33N
IC	9202	TC7WH04FU
Q	9201,9202	KTC3198
Q	9203	LSAR523UB
Q	9204	2SC5712
Q	9205	LSCR523UB
D	9201	DZ2J062MO
D	9202,9205	DA2J101
D	9203	DB2J41100

MISCELLANEOUS

V	9201	VFD	DEL1074
CN	9201	16P CONNECTOR	VKN1247
CN	9202	CONNECTOR	CKS1072
JH	9201	4P CABLE HOLDER	51048-0400
JP	9201	JUMPER WIRE	D20PY0405E

RESISTORS

R	9201,9202	RS1/4SA102J
R	9215,9218	RS1/8SQ100J
R	9216,9219,9253,9254	RS1/8SQ0R0J
R	9222	RS1/10SR8201D
R	9223	RS1/10SR3901D
R	9228,9230,9233,9235	RS1/4SA7R5J
R	9237,9239,9241,9243	RS1/4SA7R5J
R	9246,9248	RS1/4SA7R5J
	Other Resistors	RS1/10SR###J

CAPACITORS

C	9203,9205,9214	CCG1236
C	9204,9217,9230,9231	CKSRYB104K16
C	9206,9215	CKSRYB104K50
C	9207,9238	CKSRYB103K50
C	9211,9213	CKSRYB105K16
C	9221	CEHAZL221M35
C	9225-9228	CCSRCH101J50
C	9232	CKSRYB105K10
C	9235,9236	CCG1218
C	9237,9241	CKSRYB104K16
C	9239	CCSRCH102J50
C	9242-9246	CCG1236

I JOGB ASSY

MISCELLANEOUS

CN	9301	4PJUMPER CONNECTOR	52151-0410
PC	9301	PHOTO INTERRUPTER	KE-2K18-15

RESISTORS

R	9301,9302	RS1/10SR101J
R	9303	RS1/10SR820J

CAPACITORS

C	9301	CKSRYB225K6R3
C	9302	CKSRYB103K50