

# Service Manual

ORDER NO.  
RRV2355

STEREO CD CASSETTE DECK RECEIVER

# XR-A780

# XR-A380

# XR-A380SW

# XR-A380GR

THIS MANUAL IS APPLICABLE TO THE FOLLOWING MODEL(S) AND TYPE(S).

Type	Model				Power Requirement	The voltage can be converted by the following method.
	XR-A780	XR-A380	XR-A380SW	XR-A380GR		
DBDXJ	○	○	—	○	AC110-127V/220-230V/240V	With the voltage selector
DXJN/NC	○	○	—	—	AC110-127V/220-230V/240V	With the voltage selector
YPWXJ	○	○	—	—	AC240V	_____
DDXJ	—	—	○	—	AC110-127V/220-230V/240V	With the voltage selector

● This service manual should be used together with the following manual(s):

Model No.	Order No.	Remarks
XR-A6800/MYXJ XR-A4800/MYXJ	RRV2328	

## CONTENTS

1. SAFETY INFORMATION .....	2
2. CONTRAST OF MISCELLANEOUS PARTS .....	3
3. SCHEMATIC DIAGRAM .....	15
4. PCB CONNECTION DIAGRAM .....	23
5. ADJUSTMENT .....	24
6. MUSIC PAD .....	26

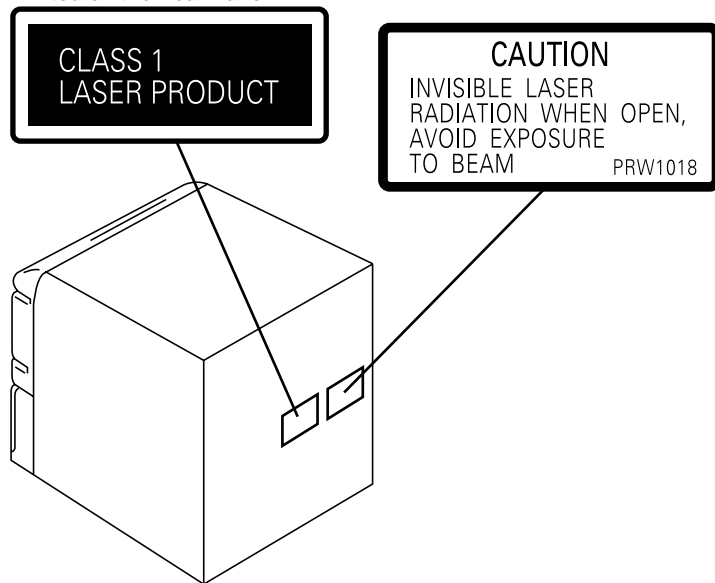
# 1. SAFETY INFORMATION

## LABEL CHECK (for YPWXJ type)

— IMPORTANT —  
THIS PIONEER APPARATUS CONTAINS  
LASER OF CLASS 1.  
SERVICING OPERATION OF THE APPARATUS  
SHOULD BE DONE BY A SPECIALLY  
INSTRUCTED PERSON.

— LASER DIODE CHARACTERISTICS —  
MAXIMUM OUTPUT POWER: 5 mW  
WAVELENGTH: 780 - 785 nm

Printed on the Rear Panel



— Additional Laser Caution —

1. Laser Interlock Mechanism  
The position of the switch (S9501) for detecting loading state is detected by the system microprocessor, and the design prevents laser diode oscillation when the switch (S9501) is pressed physically.  
Thus, the interlock will no longer function if the switch (S9501) is released physically and deliberately.  
The interlock also does not function in the test mode \*.  
Laser diode oscillation will continue, if pin 1 of CXA1821M (IC8101) on the CD ASSY mounted on the \$M Loading Mechanism assembly is connected to GND, or else the terminals of Q8101 are shorted to each other (fault condition).
2. When the cover is opened, close viewing of the objective lens with the naked eye will cause exposure to a Class 1 laser beam.

\* : Refer to page 61 on the service manual RRV2328.

## 2. CONTRAST OF MISCELLANEOUS PARTS

NOTES: ● Parts marked by "NSP" are generally unavailable because they are not in our Master Spare Parts List.

● The  $\Delta$  mark found on some component parts indicates the importance of the safety factor of the part.

Therefore, when replacing, be sure to use parts of identical designation.

● Screws adjacent to  $\nabla$  mark on product are used for disassembly.

● Reference Nos. indicate the pages and Nos. in the service manual for the base model.

● When ordering resistors, first convert resistance values into code form as shown in the following examples.

Ex.1 When there are 2 effective digits (any digit apart from 0), such as 560 ohm and 47k ohm (tolerance is shown by J=5%, and K=10%).

560	→	56 x 10 <sup>1</sup>	→	561	.....	RD1/4PU	561J
47k	→	47 x 10 <sup>3</sup>	→	473	.....	RD1/4PU	473J
0.5	→	R50	.....			RN2HR	50K
1	→	1R0	.....			RS1P	1R0K

Ex.2 When there are 3 effective digits (such as in high precision metal film resistors).

5.62k	→	562 x 10 <sup>1</sup>	→	5621	.....	RN1/4PC	5621F
-------	---	-----------------------	---	------	-------	---------	-------

### ■ CONTRAST TABLE for XR-A780

XR-A780/DBDXJ, DXJN/NC, YPWXJ and XR-A6800/MYXJ are constructed the same except for the following :

Ref. No.	Mark	Symbol and Description	Part No.				Remarks
			XR-A6800 /MYXJ	XR-A780 /DBDXJ	XR-A780 /DXJN/NC	XR-A780 /YPWXJ	
<b>PCB ASSEMBLIES</b>							
P5-1		MAIN ASSY	XWM3163	XWM3161	XWM3161	XWM3161	
		└ AF ASSY	XWZ3310	XWZ3303	XWZ3303	XWZ3303	
P5-3		COMPLEX ASSY	XWM3168	XWM3165	XWM3165	XWM3166	
	P7-1	└ PRIMARY ASSY	XWZ3312	XWZ3291	XWZ3291	XWZ3294	
		└ DISPLAY ASSY	XWZ3311	XWZ3305	XWZ3305	XWZ3305	
P5-4		FM/AM TUNER Module	AXQ7068	AXQ7065	AXQ7065	AXQ7065	
<b>PACKING SECTION</b>							
P3-1	$\Delta$	Power Cord	ADG1154	ADG1158	ADG1154	ADG1160	
P3-2		FM Antenna	ADH7005	ADH7004	ADH7004	ADH7004	
P3-6	NSP	Dry Cell Battery (R6P, AA)	VEM-013	Not used	VEM-013	Not used	
P3-10		Packing Case	XHD3143	XHD3130	XHD3131	XHD3129	
P3-11	NSP	Warranty Card	ARY7022	Not used	Not used	ARY7027	
P3-13		Operating Instructions (English/French)	XRE3030	Not used	Not used	XRE3031	
P3-14		Operating Instructions (Italian/Dutch/German)	XRC3020	Not used	Not used	Not used	
P3-15		Operating Instructions (Portuguese/Swedish/Spanish)	XRC3021	Not used	Not used	Not used	
P3-16	NSP	Polyethylene Bag	Not used	Not used	Not used	AHG7033	
		Operating Instructions (English/Chinese/Spanish)	Not used	XRE3032	Not used	Not used	
	$\Delta$	Operating Instructions (Thai) Power-cord Plug Conversion Adapter	Not used	Not used	XRC3023	Not used	Accessories
<b>EXTERIOR SECTION</b>							
P5-6	$\Delta$	Ceramic Capacitor (C1)	CKPUYB102K50	Not used	Not used	Not used	
P5-15		Rear Panel	XNC3058	XNC3061	XNC3061	XNC3060	
P5-17		Earth Plate	XNG3015	Not used	Not used	Not used	
P5-30		Caution Label HE	PRW1233	Not used	Not used	Not used	
P5-31		Caution Label	VRW1094	Not used	Not used	PRW1018	
P5-36	NSP	Getter	XAX3169	XAX3172	XAX3172	XAX3171	
	$\Delta$	Fuse (FU2, FU3 : T3.15A)	Not used	AEK1059	AEK1059	Not used	*1
		Fuse Card (For FU2, FU3)	Not used	AAK7493	AAK7493	Not used	*2
	NSP	Name Label	Not used	Not used	XAL3047	Not used	*3
<b>FRONT PANEL SECTION</b>							
P7-26		Display Panel	XAK3130	XAK3132	XAK3132	XAK3132	
P7-36		Power Button	XAD3044	XAD3043	XAD3043	XAD3043	
P7-38		SC Button	XAD3046	XAD3060	XAD3060	XAD3060	
P7-42		Sub Panel	XAK3142	XAK3144	XAK3144	XAK3144	

Notes : For PCB ASSEMBLIES, Refer to "CONTRAST OF PCB ASSEMBLIES", "3. SCHEMATIC DIAGRAM" and "4. PCB CONNECTION DIAGRAM".

\*2 Stick Fuse Card on the PRIMARY ASSY.

\*3 Stick Name Label on the Rear Panel.

# XR-A780, XR-A380, XR-A380SW, XR-A380GR

## ■ CONTRAST TABLE for XR-A380, XR-A380SW and XR-A380GR

XR-A380/DBDXJ, DXJN/NC, YPWXJ, XR-A380SW/DDXJ, XR-A380GR/DBDXJ and XR-A4800/MYXJ are constructed the same except for the following :

Ref. No.	Mark	Symbol and Description	Part No.						Remarks
			XR-A4800 /MYXJ	XR-A380 /DBDXJ	XR-A380 /DXJN/NC	XR-A380 /YPWXJ	XR-A380SW SW/DDXJ	XR-A380GR /DBDXJ	
		<b>PCB ASSEMBLIES</b>							
P5- 1		MAIN ASSY └ AF ASSY	XWM3152 XWZ3297	XWM3151 XWZ3288	XWM3151 XWZ3288	XWM3151 XWZ3288	XWM3151 XWZ3288	XWM3151 XWZ3288	
P5- 3		COMPLEX ASSY └ PRIMARY ASSY	XWM3158 XWZ3299	XWM3154 XWZ3291	XWM3154 XWZ3291	XWM3156 XWZ3294	XWM3155 XWZ3291	XWM3154 XWZ3291	
P7- 1		└ DISPLAY ASSY	XWZ3298	XWZ3290	XWZ3290	XWZ3290	XWZ3293	XWZ3290	
P5- 4		FM/AM TUNER Module	AXQ7068	AXQ7065	AXQ7065	AXQ7065	AXQ7062	AXQ7065	
		<b>PACKING SECTION</b>							
P3- 1	△	Power Cord	ADG1154	ADG1158	ADG1154	ADG1160	ADG1158	ADG1158	
P3- 2		FM Antenna	ADH7005	ADH7004	ADH7004	ADH7004	ADH7004	ADH7004	
P3- 6	NSP	Dry Cell Battery (R6P, AA)	VEM-013	Not used	VEM-013	Not used	Not used	VEM-013	
P3-10		Packing Case	XHD3142	XHD3122	XHD3123	XHD3120	XHD3121	XHD3119	
P3-11	NSP	Warranty Card	ARY7022	Not used	Not used	ARY7027	Not used	Not used	
P3-13		Operating Instructions (English/French)	XRE3030	Not used	Not used	XRE3031	Not used	Not used	
P3-14		Operating Instructions (Italian/Dutch/German)	XRC3020	Not used	Not used	Not used	Not used	Not used	
P3-15		Operating Instructions (Portuguese/Swedish/Spanish)	XRC3021	Not used	Not used	Not used	Not used	Not used	
P3-16	NSP	Polyethylene Bag	Not used	Not used	Not used	AHG7033	Not used	AHG7033	
		Operating Instructions (English/Chinese/Spanish)	Not used	XRE3032	Not used	Not used	Not used	XRE3032	
		Operating Instructions (Thai)	Not used	Not used	XRC3023	Not used	Not used	Not used	
		Operating Instructions (English/Arabian/Chinese)	Not used	Not used	Not used	Not used	XRE3033	Not used	
		Operating Instructions (English/Arabian/Russian/ Chinese/Spanish/French)	Not used	Not used	Not used	Not used	Not used	XRE3027	
	△	Power-cord Plug Conversion Adapter	Not used	XKM3002	Not used	Not used	Not used	XKM3002	Accessories
		SW Antenna	Not used	Not used	Not used	Not used	ADH7006	Not used	Accessories
		Battery Label	Not used	Not used	Not used	Not used	Not used	XAX3162	For MUSIC PAD
		Cord with Mini Plug	Not used	Not used	Not used	Not used	Not used	XDE3025	Accessories
		Cap Sheet	Not used	Not used	Not used	Not used	Not used	XHG3006	For Packing
		Packing Sheet	Not used	Not used	Not used	Not used	Not used	XHG3007	For Packing
		MUSIC PAD	Not used	Not used	Not used	Not used	Not used	XXD3021	Accessories*4
		<b>EXTERIOR SECTION</b>							
P5- 6	△	Ceramic Capacitor (C1)	CKPUYB102K50	Not used	Not used	Not used	Not used	Not used	
P5-15		Rear Panel	XNC3053	XNC3055	XNC3055	XNC3056	XNC3055	XNC3055	
P5-17		Earth Plate	XNG3015	Not used	Not used	Not used	Not used	Not used	
P5-30		Caution Label HE	PRW1233	Not used	Not used	Not used	Not used	Not used	
P5-31		Caution Label	VRW1094	Not used	Not used	PRW1018	Not used	Not used	
P5-36	NSP	Getter	XAX3163	XAX3165	XAX3165	XAX3167	XAX3165	XAX3165	
	△	Fuse (FU2, FU3 : T2A)	Not used	AEK1057	AEK1057	Not used	AEK1057	AEK1057	*1
	NSP	Name Label	Not used	Not used	XAL3044	Not used	XAL3043	XAL3042	*2
		<b>FRONT PANEL SECTION</b>							
P7- 3		Deck Mechanism Unit	XYM3012	XYM3011	XYM3011	XYM3011	XYM3011	XYM3011	*3
P7- 5		Flexible Cable 15P	XDD3050	Not used	Not used	Not used	Not used	Not used	
P7- 5		Flexible Cable 13P	Not used	XDD3040	XDD3040	XDD3040	XDD3040	XDD3040	
P7-26		Display Panel	XAK3125	XAK3128	XAK3128	XAK3128	XAK3128	XAK3128	
P7-38		SC Button	XAD3046	XAD3060	XAD3060	XAD3060	XAD3060	XAD3060	
P7-56		Connector Assy 3P	XDE3037	XDE3036	XDE3036	XDE3036	XDE3036	XDE3036	

Notes : For PCB ASSEMBLIES, Refer to "CONTRAST OF PCB ASSEMBLIES", "3. SCHEMATIC DIAGRAM" and "4. PCB CONNECTION DIAGRAM".

\*1 Refer to "3. SCHEMATIC DIAGRAM".

\*2 Stick Name Label on the Rear Panel.

\*3 Refer to "EXPLODED VIEWS".

\*4 Refer to "6. MUSIC PAD".

■ **EXPLODED VIEWS**

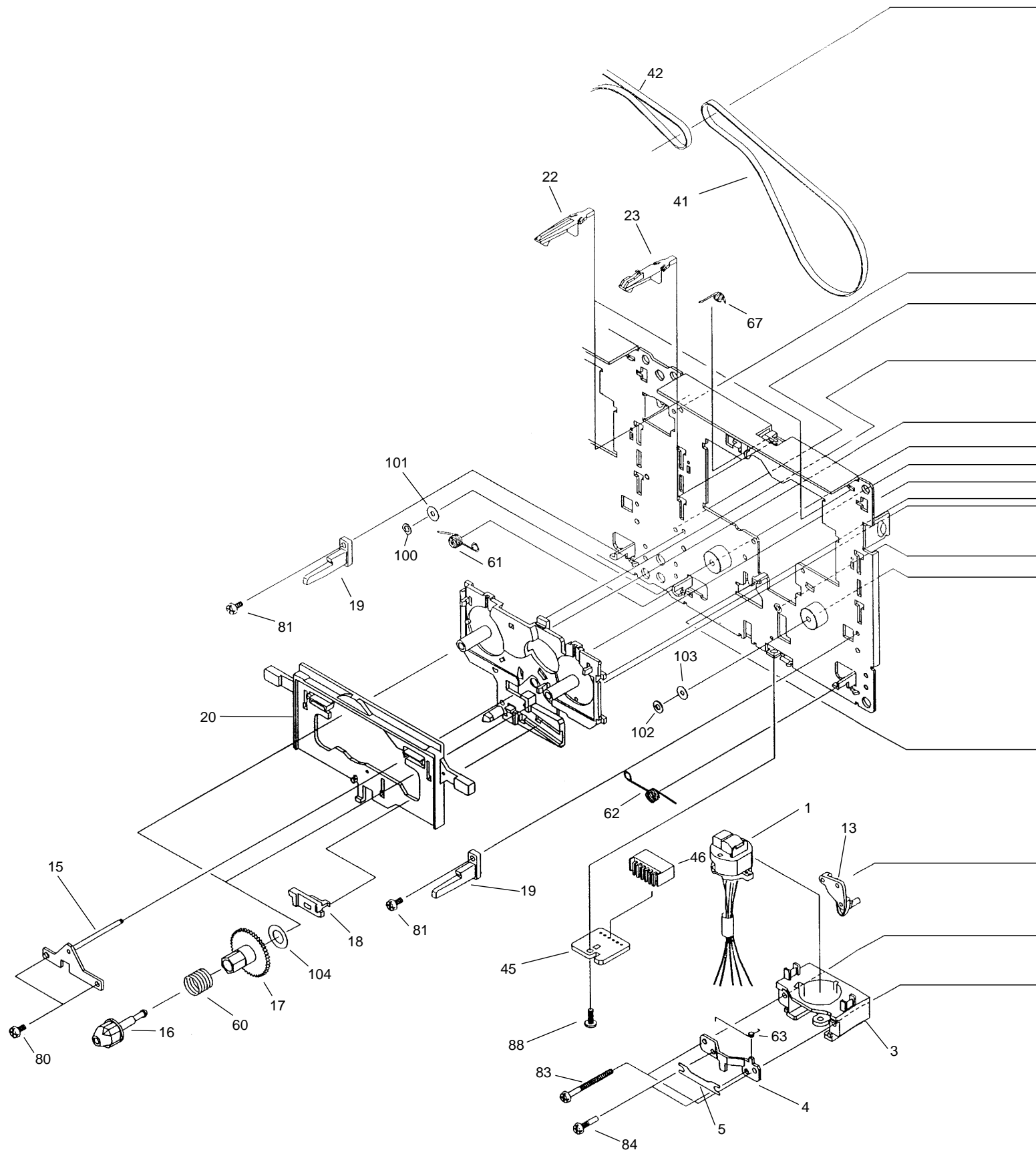
● **DECK MECHANISM UNIT SECTION (XYM3011)**

● **DECK MECHANISM UNIT PARTS LIST**

<b>Mark</b>	<b>No.</b>	<b>Description</b>	<b>Part No.</b>	<b>Mark</b>	<b>No.</b>	<b>Description</b>	<b>Part No.</b>
	1	Ass'y HD Holder	50-093-4373	60	Spring		01-081-4601
	3	Frame HD	50-219-3024	61	Spring		01-082-4652
	4	Plate AZ	50-119-4046	62	Spring		01-082-4651
	5	Spring AZ	50-160-4108	63	Spring		01-082-4650
	6	Lever HD	50-259-3342	64	Spring		01-080-4649
	7	R/P Head	TC881CB067B	65	Spring		01-080-4607
	9	Guide Tape	50-219-4038	66	Spring		01-080-4635
	10	Plate HD	50-093-3036	67	Spring		01-082-4654
	11	Chassis HD	50-112-3045	68	Spring		01-082-4598
	12	Cap Pinch R	50-219-4033	69	Spring		01-082-4597
	13	Cap Pinch L	50-219-4034	70	Spring		01-081-4657
	14	Roller Pinch	50-027-41054				
	15	Ass'y Plate D	50-219-4311	71	Spring		01-081-4605
	16	Cap Reel	50-228-4020	80	Screw		GSE10A2003
	17	Gear Reel	50-222-4006				
	18	Lever ST	50-259-4041	81	Screw		GSE20A2005
	19	Guide C	50-219-4014	82	Screw		GSE10A2004
	20	Lever Brake	50-259-3251	83	Screw		GSD10A2018
				84	Screw		03-300-4056
	22	Arm SW	50-239-4027	85	Screw		GSL10A1704
	23	Arm CS	50-239-4026				
	25	Ass'y Cover	50-093-4063	86	Screw		GSP10A2603
				87	Screw		GSP11A2012
	27	Arm Trigger	50-268-3016	88	Screw		GSE20A2004
	28	Arm Cam	50-139-4292	89	Screw		GSL20A2005
	29	Gear Cam	50-221-3009	90	Screw		03-300-4127
	30	Coller	03-300-4455				
				100	Washer		GWN21X040040
	31	Ass'y Flywheel RA	50-093-3360				
	32	Ass'y Clutch	50-093-4069	101	Washer		GWM19X055035S
	33	Arm UD A	50-239-4017	102	Washer		GWM19S035035
	34	Gear UD	50-222-4007	103	Washer		GWM17S050035S
	35	Pulley D	50-223-4254	104	Washer		GWM48X075010
				105	Washer		GWP23X040020
	36	Plunger	03-300-4442				
	37	Ass'y Bobbin	50-093-4125	106	Washer		GWP21X045020
	39	Ass'y Motor	50-093-4316	107	Washer		GWP12X030040S
	41	Belt BR	02-084-4205				
	42	Belt AF	02-084-4202				
	43	Belt FR	02-083-4188				
	45	PCB HD	50-070-4057				
	46	Housing	S5BPHKS				
	50	Ass'y PCB	50-093-4057				
	51	Ass'y Flywheel L	50-093-3315				
	52	Ass'y Flywheel RB	50-093-3361				

# XR-A780, XR-A380, XR-A380SW, XR-A380GR

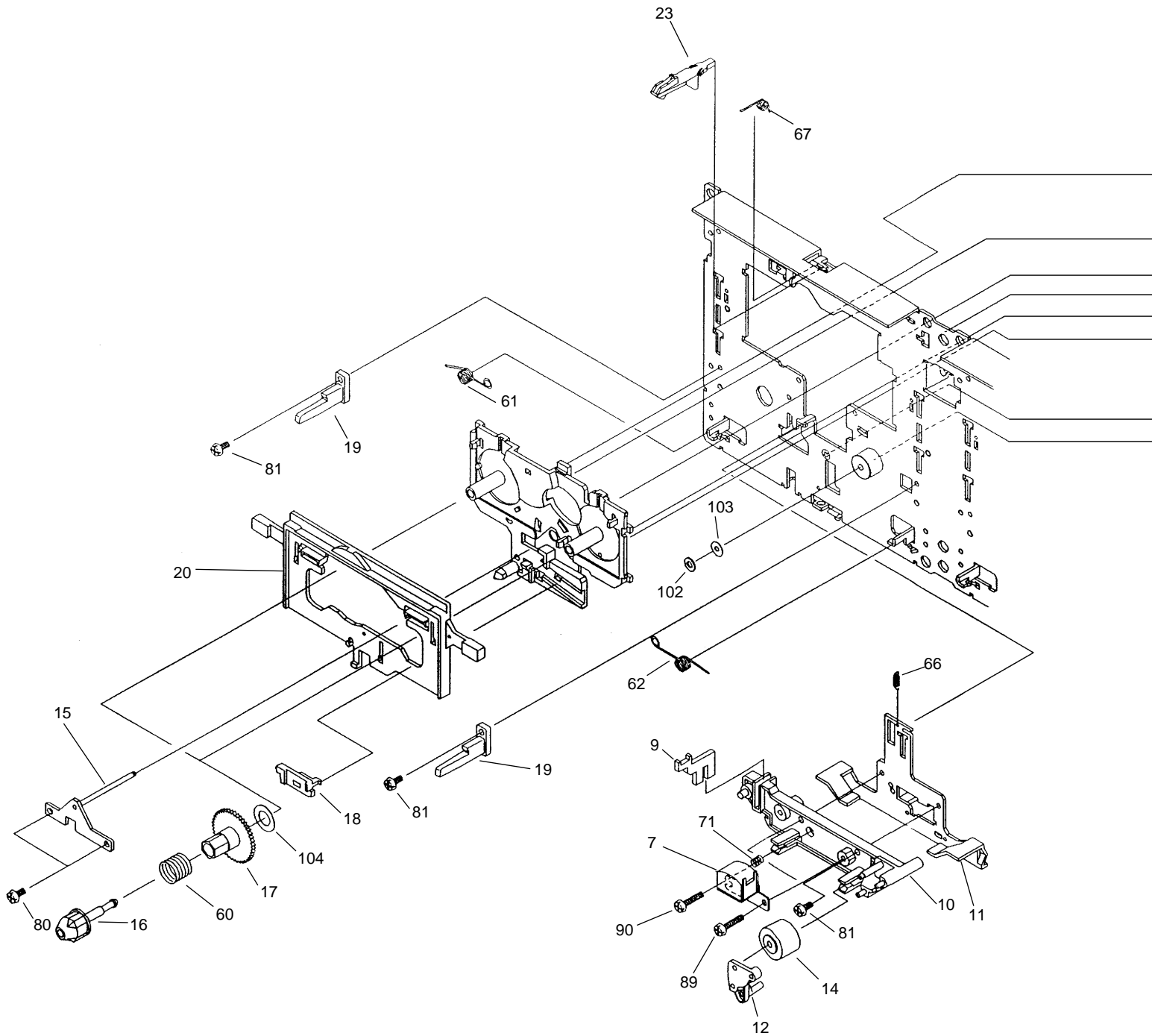
## • DECK MECHANISM UNIT (1/2)





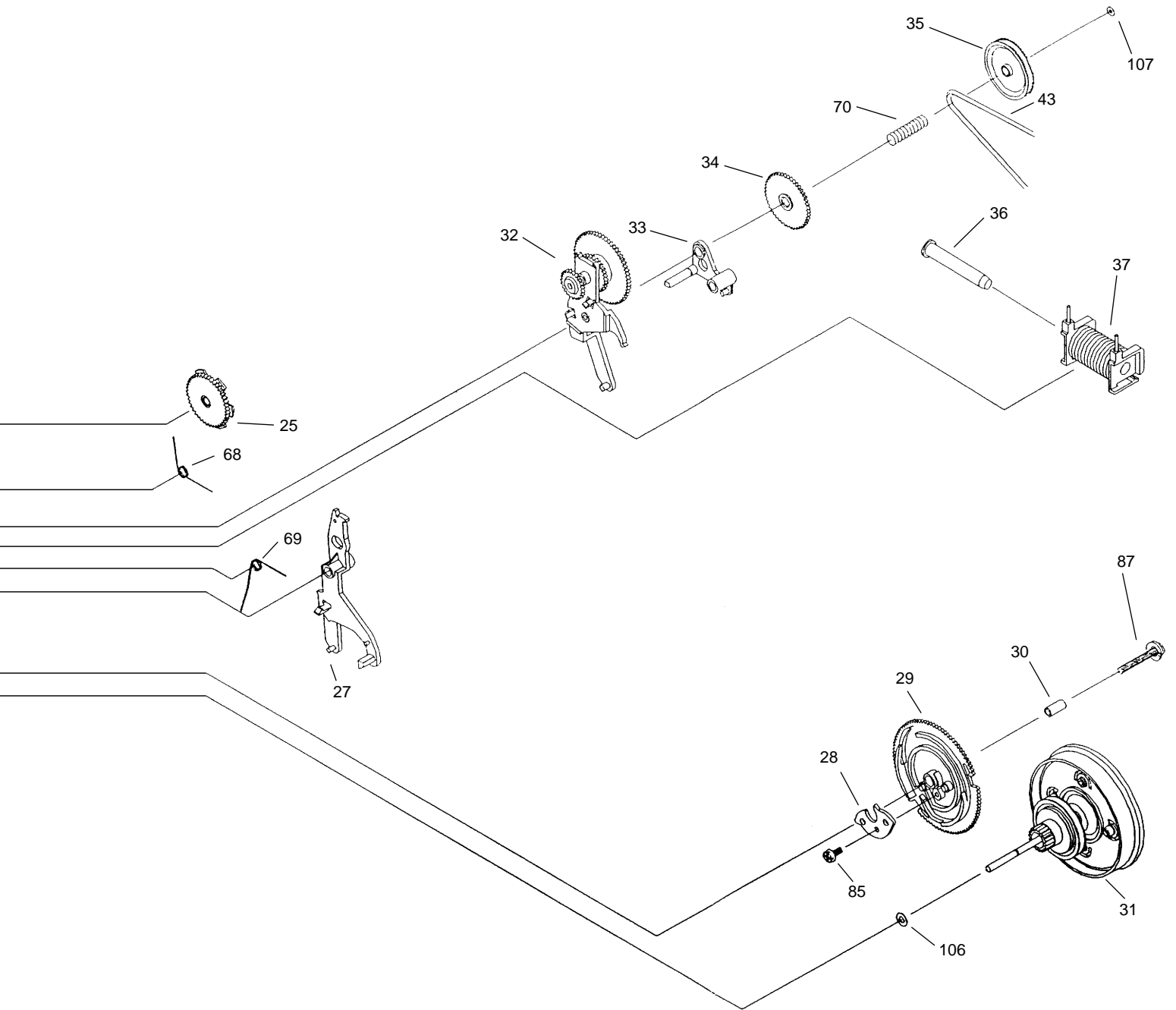
# XR-A780, XR-A380, XR-A380SW, XR-A380GR

## • DECK MECHANISM UNIT (2/2)





**XR-A780, XR-A380, XR-A380SW,  
XR-A380GR**



**XR-A780, XR-A380, XR-A380SW,  
XR-A380GR**

**■ CONTRAST OF PCB ASSEMBLIES**

**F AF ASSY**

XWZ3303 and XWZ3310 are constructed the same except for the following :

Mark	Symbol and Description	Part No.		Remarks
		XWZ3310	XWZ3303	
IC5751		BU1923F	Not used	
Q5751		2SA1037K	Not used	
Q5752		DTC124EK	Not used	
L3333, L3334		ATH-133	Not used	
L3991		Not used	XTL3001	
L5751		XTL3002	Not used	
C1997, C3329, C3330		CKSRYB103K50	Not used	
C2003, C2004		CKSRYB104K50	Not used	
C2327-C2330, C3321, C3322, C3852, C3854		CCSRCH470J50	Not used	
C3001, C3002, C3858		CCSRCH101J50	Not used	
C3023, C3024		CFTLA564J50	CFTLA474J50	
C3025, C3026		CKSRYB104K16	CKSRYB683K16	
C3027, C3028		CFTLA334J50	CFTLA154J50	
C3029, C3030		CKSRYB563K16	CKSRYB273K16	
C3043, C3044, C3082		CEATR47M50	CEAT2R2M50	
C3051, C3052, C3851, C3853, C3855		CKSRYB472K50	Not used	
C3073-C3076		CKSRYB122K50	Not used	
C3081		CEAT4R7M50	CEAT100M50	
C3091		CEAT2R2M50	CEAT100M50	
C3319, C3320		CCSRCH6R0D50	CCSRCJ3R0C50	
C3335-C3338		CKSRYF104Z50	Not used	
C3345, C3346 (0.01μF)		ACG7021	Not used	
C3447, C3448, C3991, C5753		CKSRYB102K50	Not used	
C3850		CKSRYB473K16	Not used	
C3994, C3995		CCSRCH681J50	Not used	
C5751, C5752, C5755		CCSRCH270J50	Not used	
C5754		CEAT330M16	Not used	
C5756		CCSQCH561J50	Not used	
C5757		CCSRCH271J50	Not used	
C5758		CEAT100M50	Not used	
R3315, R3316		RS1/10S823J	RS1/10S104J	
R3317, R3318		RD1/4PU823J	RD1/4PU104J	
R3323, R3324		RS1/16S102J	RS1/16S0R0J	
R3333, R3334		RD1/4LMS101J	RD1/4LMF100J	
R3335, R3336		RS1/16S100J	Not used	
R3515-R3518		RS1/16S152J	RS1/16S122J	
R5751		RS1/16S223J	Not used	
R5752		RS1/16S222J	Not used	
R5753		RS1/16S101J	Not used	
R5754		RS1/16S102J	Not used	
CN3331 4P SPEAKER TERMINAL		AKE7018	XKE3004	
X5751 CRYSTAL RESONATOR (4.332MHz)		ASS7004	Not used	

**F** AF ASSY

XWZ3288 and XWZ3297 are constructed the same except for the following :

Mark	Symbol and Description	Part No.		Remarks
		XWZ3297	XWZ3288	
	IC5751	BU1923F	Not used	
	Q5751	2SA1037K	Not used	
	Q5752	DTC124EK	Not used	
	L3333, L3334	ATH-133	Not used	
	L3991	Not used	XTL3001	
	L5751	XTL3002	Not used	
	C1997, C3329, C3330	CKSRYB103K50	Not used	
	C2327-C2330, C3321, C3322, C3852, C3854	CCSRCH470J50	Not used	
	C3001, C3002, C3858	CCSRCH101J50	Not used	
	C3023, C3024	CFTLA564J50	CFTLA474J50	
	C3025, C3026	CKSRYB104K16	CKSRYB683K16	
	C3027, C3028	CFTLA334J50	CFTLA154J50	
	C3029, C3030	CKSRYB563K16	CKSRYB273K16	
	C3043, C3044, C3082	CEATR47M50	CEAT2R2M50	
	C3051, C3052, C3853, C3855	CKSRYB472K50	Not used	
	C3073-C3076	CKSRYB122K50	Not used	
	C3081	CEAT4R7M50	CEAT100M50	
	C3091	CEAT2R2M50	CEAT100M50	
	C3319, C3320	CCSRCH6R0D50	CCSRCJ3R0C50	
	C3335-C3338	CKSRYF104Z50	Not used	
	C3345, C3346 (0.01μF)	ACG7021	Not used	
	C3850	CKSRYB473K16	Not used	
	C3994, C3995	CCSRCH681J50	Not used	
	C5751, C5752, C5755	CCSRCH270J50	Not used	
	C5753	CKSRYB103K50	Not used	
	C5754	CEAT330M16	Not used	
	C5756	CCSQCH561J50	Not used	
	C5757	CCSRCH271J50	Not used	
	C5758	CEAT100M50	Not used	
	R3315, R3316	RS1/10S823J	RS1/10S104J	
	R3317, R3318	RD1/4PU823J	RD1/4PU104J	
	R3323, R3324	RS1/16S102J	RS1/16S0R0J	
	R3333, R3334	RD1/4LMS101J	RD1/4LMF100J	
	R3335, R3336	RS1/16S100J	Not used	
	R3509	RS1/16S393J	RS1/16S473J	
	R3515-R3518	RS1/16S152J	RS1/16S122J	
	R5751	RS1/16S223J	Not used	
	R5752	RS1/16S222J	Not used	
	R5753	RS1/16S101J	Not used	
	R5754	RS1/16S102J	Not used	
	X5751 CRYSTAL RESONATOR (4.332MHz)	ASS7004	Not used	

**XR-A780, XR-A380, XR-A380SW,  
XR-A380GR**

**HF PRIMARY ASSY**

XWZ3291, XWZ3294 and XWZ3312 are constructed the same except for the following :

Mark	Symbol and Description	Part No.			Remarks
		XWZ3312	XWZ3291	XWZ3294	
△	S1 VOLTAGE SELECTOR L1 LINE FILTER H3-H6 FUSE CLIP	Not used ATF1136 Not used	XKX3001 Not used AKR7001	Not used Not used Not used	

**IF DISPLAY ASSY**

XWZ3305, XWZ3290, XWZ3293 and XWZ3311 are constructed the same except for the following :

Mark	Symbol and Description	Part No.				Remarks
		XWZ3311	XWZ3305	XWZ3290	XWZ3293	
	Q5656-Q5658	2SC2412K	2SC2412K	Not used	Not used	
	D5561, D5562	1SS181	1SS181	Not used	Not used	
	D5593	1SS133	1SS133	Not used	Not used	
	D5594	1SS355	Not used	Not used	1SS355	
	D5595, D5596	1SS355	Not used	Not used	Not used	
	D5601-D5608, D5618, D5622	SLP3118C51H	SLP3118C51H	Not used	Not used	
	D5617, D5621	SLP6118C51H	SLP6118C51H	Not used	Not used	
	D5652-D5655, D5657, D5658	1SS355	1SS355	Not used	Not used	
	C3909	CKSRYB472K50	Not used	Not used	Not used	
	C3913	CCSRCH471J50	Not used	Not used	Not used	
	C3914, C3915	CCSRCH470J50	Not used	Not used	Not used	
	C3920, C3921	CCSRCH101J50	Not used	Not used	Not used	
	C3922	CKSRYB561K50	Not used	Not used	Not used	
	C3951, C3952	CKSRYB103K50	Not used	Not used	Not used	
	R3908	RS1/16S122J	RS1/16S101J	RS1/16S101J	RS1/16S101J	
	R5518	RS1/16S102J	Not used	Not used	Not used	
	R5561, R5562	RS1/16S152J	RS1/16S152J	Not used	Not used	
	R5570, R5571	RS1/16S473J	RS1/16S473J	Not used	Not used	
	R5601, R5613, R5617	RD1/4PU151J	RD1/4PU151J	Not used	Not used	
	R5618, R5620, R5622	RS1/16S222J	RS1/16S222J	Not used	Not used	
	R5619, R5621, R5623	RS1/16S330J	RS1/16S330J	Not used	Not used	
	R5702, R5704	Not used	RS1/16S223J	RS1/16S223J	RS1/16S223J	
	CN2901 FFC CONNECTOR	HLEM15R-1	HLEM15R-1	HLEM13R-1	HLEM13R-1	

# XR-A780, XR-A380, XR-A380SW, XR-A380GR

Mark	No.	Description	Part No.
------	-----	-------------	----------

## ● PCB PARTS LIST

### **A**F FM/AM TUNER MODULE (AXQ7065)

#### SEMICONDUCTORS

IC6201	LA1832ML
IC6202	LC72131MD
Q6402	2SC2223
Q6203	2SC2705
Q6201,Q6202	2SC2712
Q6214,Q6403	2SC2714
Q6404	2SK302
Q6401	3SK194
Q6204	DTA124ES
Q6205	DTC124EK
D6202	1SS254
D6401,D6402	1T378A

#### COILS AND FILTERS

L6404	FM COIL	ATC1003
L6401	FM RF COIL	ATC1020
L6402	FM RF COIL	ATC1021
F6204	FM CERAMIC FILTER	ATF-107
F6203	FM CERAMIC FILTER	ATF-119
F6401	FM BAND PASS FILTER	ATF-155
F6206	FM CERAMIC DISCLI.	ATF7008
F6202	AM CERAMIC FILTER	ATF7011
L6206,L6208,L6403		LAU2R2J

#### TRANSFORMERS

T6201	ATB7008
T6401	ATE7002

#### CAPACITORS

C6208	CCSQCH100D50
C6212,C6274,C6275,C6408	CCSQCH101J50
C6412	CCSQCH102J50
C6221,C6222,C6416	CCSQCH150J50
C6271	CCSQCH200J50
C6415	CCSQCH330J50
C6406	CCSQCH331J50
C6401,C6419	CCSQCH5R0C50
C6407	CCSQCK1R0C50
C6410	CCSQCK2R0C50
C6413	CCSQRH180J50
C6414	CCSQRH8R0D50
C6405	CCSQTH150J50
C6234,C6235	CEAL1R0M50
C6245	CEAL470M16
C6224	CEAT100M50
C6243	CEAT101M16
C6231	CEAT1R0M50
C6227	CEAT220M25
C6214,C6236	CEAT2R2M50
C6262	CEAT3R3M50
C6219	CEAT470M10
C6244	CEAT470M16
C6249,C6250,C6265,C6266	CEAT4R7M50
C6258	CEJA470M16

Mark	No.	Description	Part No.
------	-----	-------------	----------

C6215	CFTLA103J50
C6211,C6254,C6403,C6417	CKSQYB102K50
C6201,C6205,C6210,C6237,C6276	CKSQYB103K50
C6278,C6280,C6281,C6402,C6409	CKSQYB103K50
C6418	CKSQYB103K50
C6251,C6252	CKSQYB153K50
C6203,C6259	CKSQYB223K50
C6228	CKSQYB472K50
C6209	CKSQYB473K50
C6230	CKSQYB821K50
C6218,C6223,C6255	CKSQYF103Z50
C6220,C6226,C6242,C6256	CKSQYF223Z50
C6225	CKSQYF473Z50

#### RESISTORS

R6280	RD1/4PU101J
R6413,R6416,R6418,R6906,R6909	RS1/8S0R0J
R6401	RS1/8S470J
VR6201 (10kΩ)	PCP1029
Other Resistors	RS1/10S□□□□J

#### OTHERS

BN6202	4P ANTENNA TERMINAL	AKE7051
X6202	CERAMIC RESONATOR (456kHz)	ASS1066
X6201	CRYSTAL RESONATOR (7.2000MHz)	ASS1093
CN6201	14P SOCKET MW RF TUNING BLOCK	KP200IA14L AKX7041

# XR-A780, XR-A380, XR-A380SW, XR-A380GR

Mark	No.	Description	Part No.
------	-----	-------------	----------

## ● PCB PARTS LIST

### **A**F FM/AM TUNER MODULE (AXQ7062)

#### SEMICONDUCTORS

IC6201	LA1832ML
IC6202	LC72131MD
Q6402	2SC2223
Q6203	2SC2705
Q6201, Q6202	2SC2712
Q6214, Q6403	2SC2714
Q6304, Q6306	2SD2114K
Q6404	2SK302
Q6401	3SK194
Q6301-Q6303	DTA124EK
Q6204	DTA124ES
Q6205	DTC124EK
D6202, D6303-D6308, D6310-D6312	1SS254
D6314, D6315	1SS254
D6302, D6309	1SS85
D6401, D6402	1T363
D6313	KV1561A-2

#### COILS AND FILTERS

L6303	ATA7001
L6304	ATA7002
L6404	ATC1003
L6401	ATC1020
L6402	ATC1021
F6204	ATF-107
F6203	ATF-119
F6401	ATF-155
F6206	ATF7008
F6202	ATF7017
L6206, L6208, L6403	LAU2R2J
L6301, L6302	LTA393J

#### TRANSFORMERS

T6201	ATB7008
T6401	ATE7002

#### CAPACITORS

C6208	CCSQCH100D50
C6212, C6274, C6275, C6408	CCSQCH101J50
C6412	CCSQCH102J50
C6221, C6222, C6416	CCSQCH150J50
C6271	CCSQCH200J50
C6415	CCSQCH330J50
C6401, C6419	CCSQCH5R0C50
C6304	CCSQCH7R0D50
C6407	CCSQCK1R0C50
C6320, C6410	CCSQCK2R0C50
C6413	CCSQPH220J50
C6414	CCSQPH8R0D50
C6405	CCSQTH180J50
C6234, C6235	CEAL1R0M50
C6245	CEAL470M16
C6224	CEAS100M50
C6243	CEAS101M16
C6231	CEAS1R0M50
C6227	CEAS220M16
C6236	CEAS2R2M50

Mark	No.	Description	Part No.
------	-----	-------------	----------

C6216	CEAS330M16
C6262	CEAS3R3M50
C6219	CEAS470M10
C6244	CEAS470M16
C6249, C6250, C6265, C6266	CEAS4R7M50
C6258	CEJA470M16
C6215	CFTLA103J50
C6214	CFTLA224J50
C6211, C6254, C6403, C6406	CKSQYB102K50
C6201, C6205, C6210, C6213, C6237	CKSQYB103K50
C6276, C6278, C6280, C6281, C6302	CKSQYB103K50
C6308, C6312, C6314, C6318, C6319	CKSQYB103K50
C6402, C6409, C6417, C6418	CKSQYB103K50
C6251, C6252	CKSQYB153K50
C6303	CKSQYB222K50
C6203, C6259, C6301, C6305, C6306	CKSQYB223K50
C6311, C6315	CKSQYB223K50
C6228	CKSQYB472K50
C6209	CKSQYB473K50
C6310	CKSQYB562K50
C6230	CKSQYB821K50
C6218, C6223, C6255	CKSQYF103Z50
C6316	CKSQYF105Z16
C6220, C6226, C6242, C6256	CKSQYF223Z50
C6225	CKSQYF473Z50

#### RESISTORS

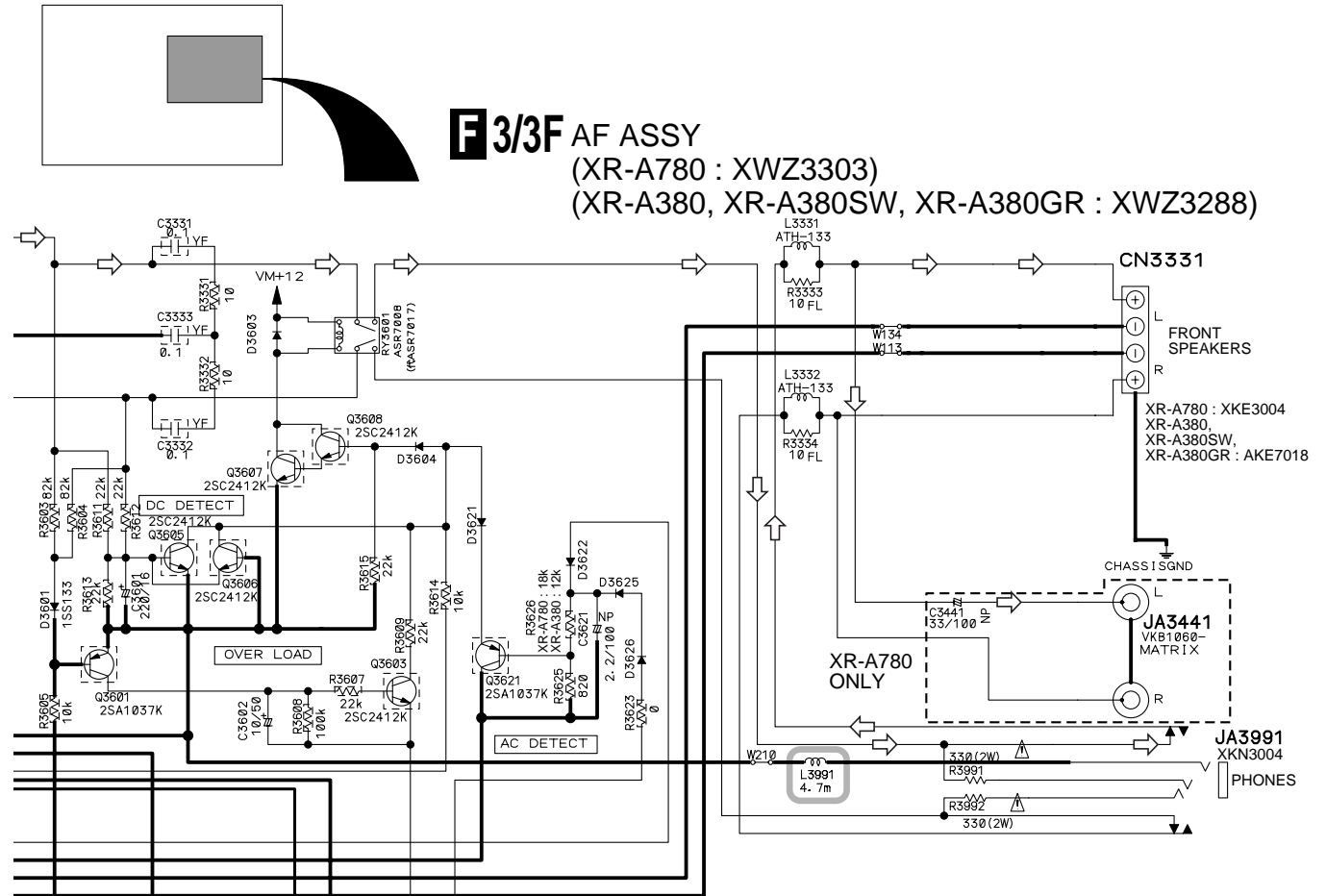
R6280	RD1/4PU101J
R6311, R6318, R6413, R6416, R6418	RS1/8S0R0J
R6906, R6909	RS1/8S0R0J
R6304	RS1/8S103J
R6401	RS1/8S470J
VR6201 (2.2kΩ/0.1W)	RCP1046
Other Resistors	RS1/10S□□□J

#### OTHERS

BN6202	TERMINAL 4-P	AKE7051
X6202	CERAMIC RESONATOR (456kHz)	ASS1066
X6201	CRYSTAL RESONATOR (7.2MHz)	ASS1093
CN6201	14P SOCKET	KP2001A14L
	AM RF TUNING BLOCK	AXX7039
	AM RF TUNING BLOCK	AXX7040

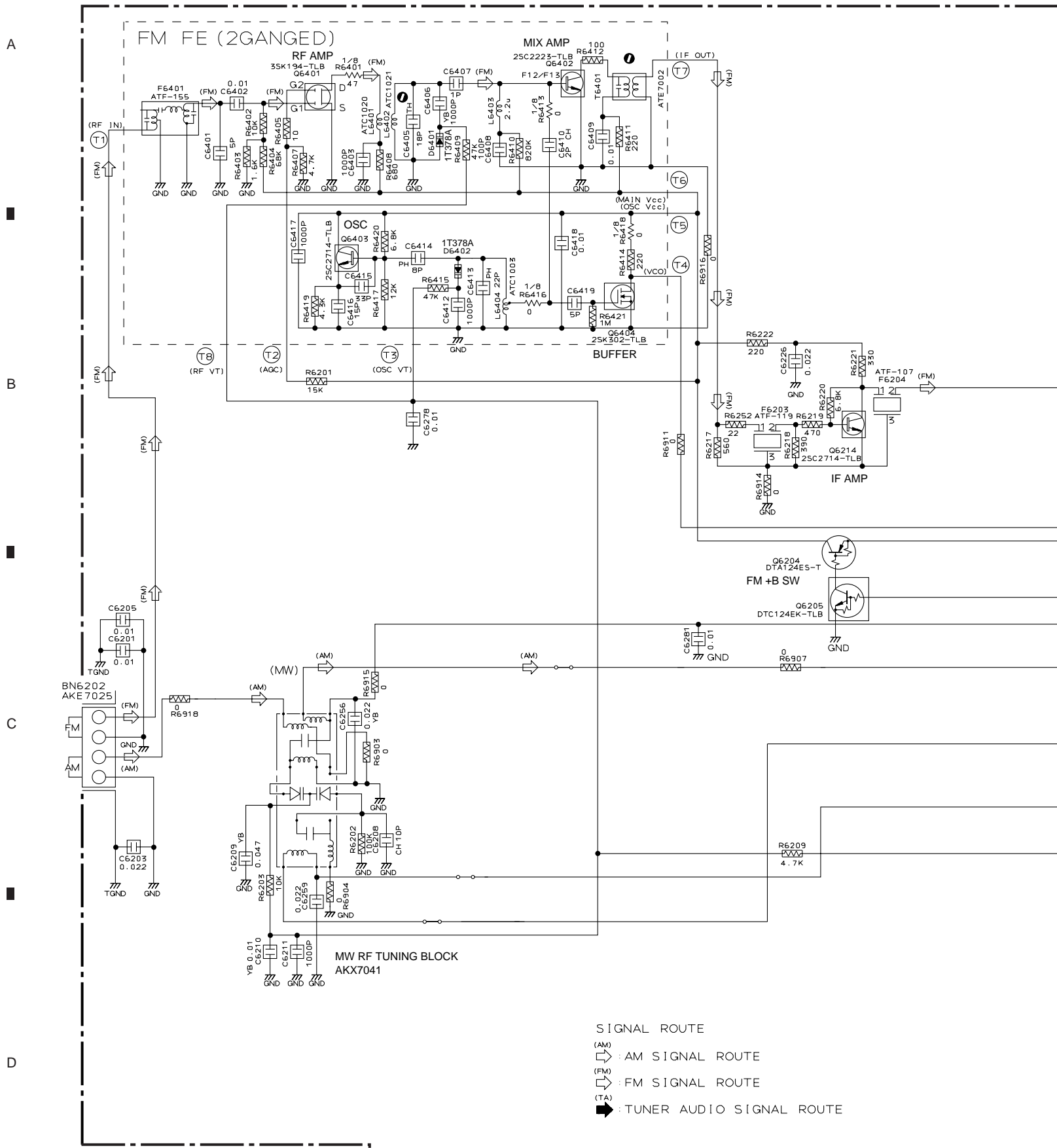
### 3. SCHEMATIC DIAGRAM

#### 3.1 AF (3/3) ASSY



# XR-A780, XR-A380, XR-A380SW, XR-A380GR

## 3.2 FM/AM TUNER MODULE





Note : When ordering service parts, be sure to refer to "EXPLODED VIEWS and PARTS LIST" or "PCB PARTS LIST"

## AF FM/AM TUNER MODULE (AXQ7065)

### Notes

#### 1. RESISTORS

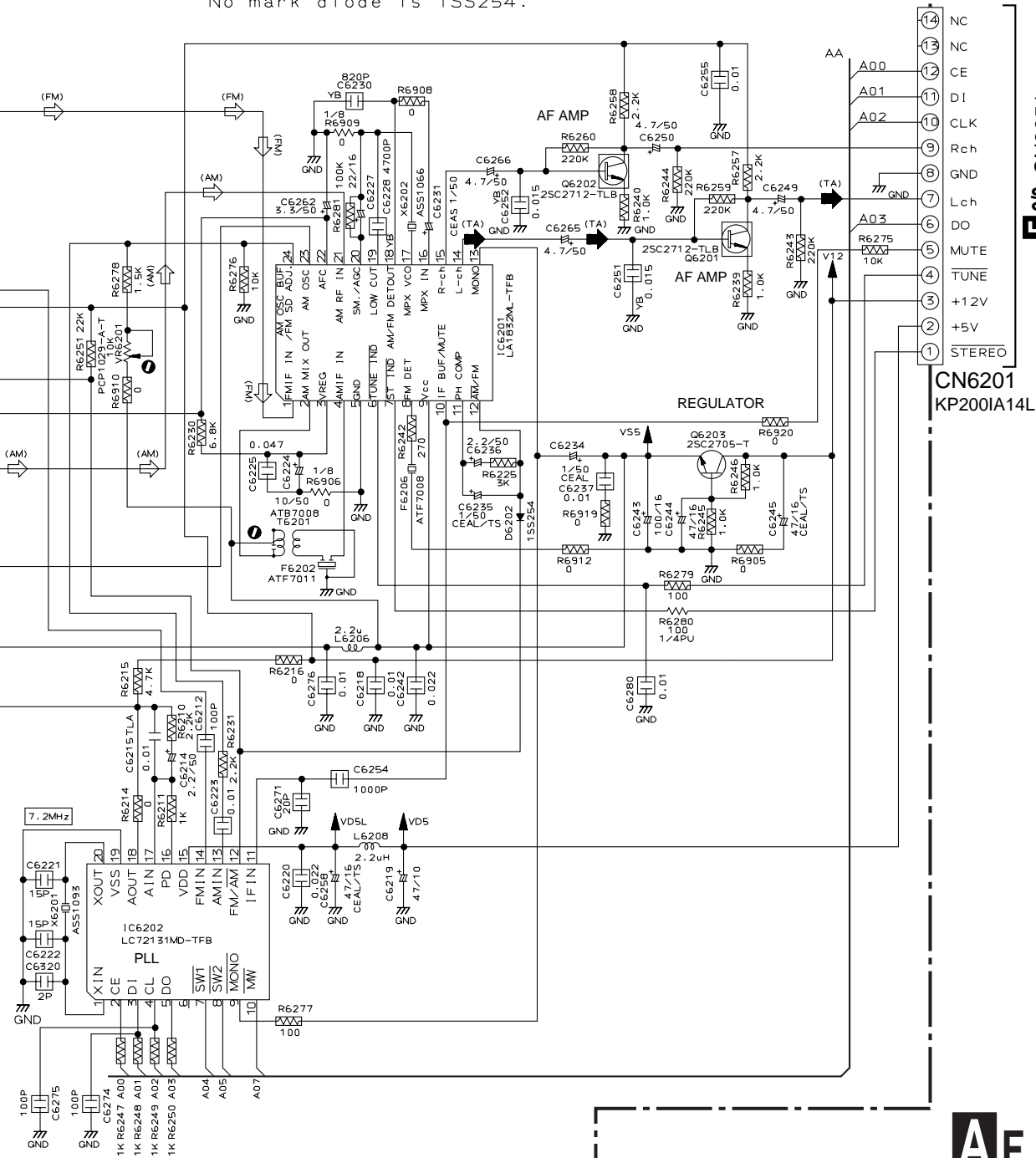
Indicated in  $\Omega$ , 1/10W $\pm$ 5% Tolerance unless otherwise noted K:K $\Omega$ , M:M $\Omega$ .

#### 2. CAPACITORS

Indicated in Capacity ( $\mu$ F)/VOLTAGE (V) unless otherwise noted P:PF.

#### 3. DIODES

No mark diode is 1SS254.

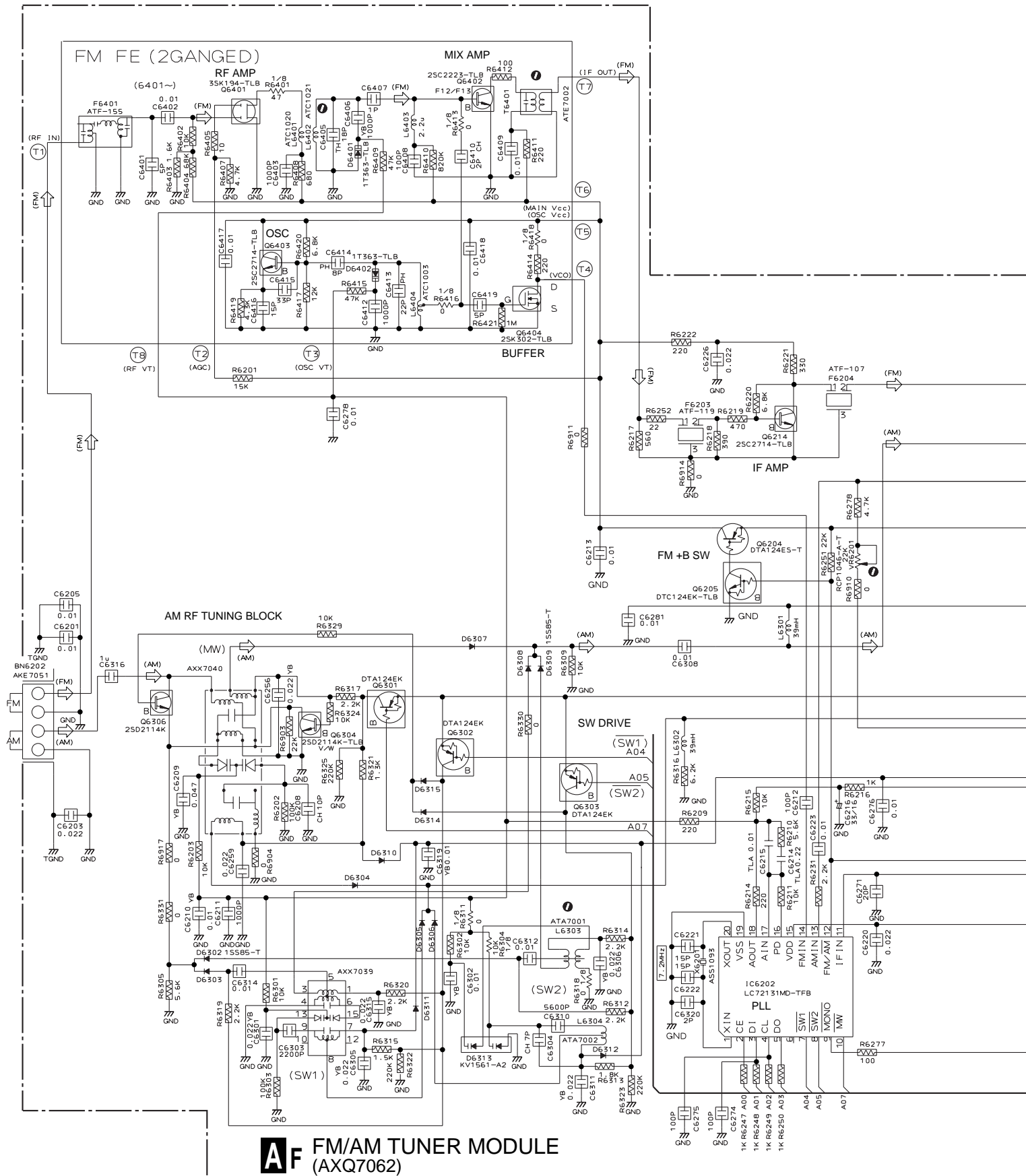


F 2/3 CN3051

CN6201  
KP2001A14L

# XR-A780, XR-A380, XR-A380SW, XR-A380GR

## 3.3 FM/AM TUNER MODULE



**AF** FM/AM TUNER MODULE (AXQ7062)

SIGNAL ROUTE

- (AM) AM SIGNAL ROUTE
- (FM) FM SIGNAL ROUTE
- (TA) TUNER AUDIO SIGNAL ROUTE

Notes

1. RESISTORS

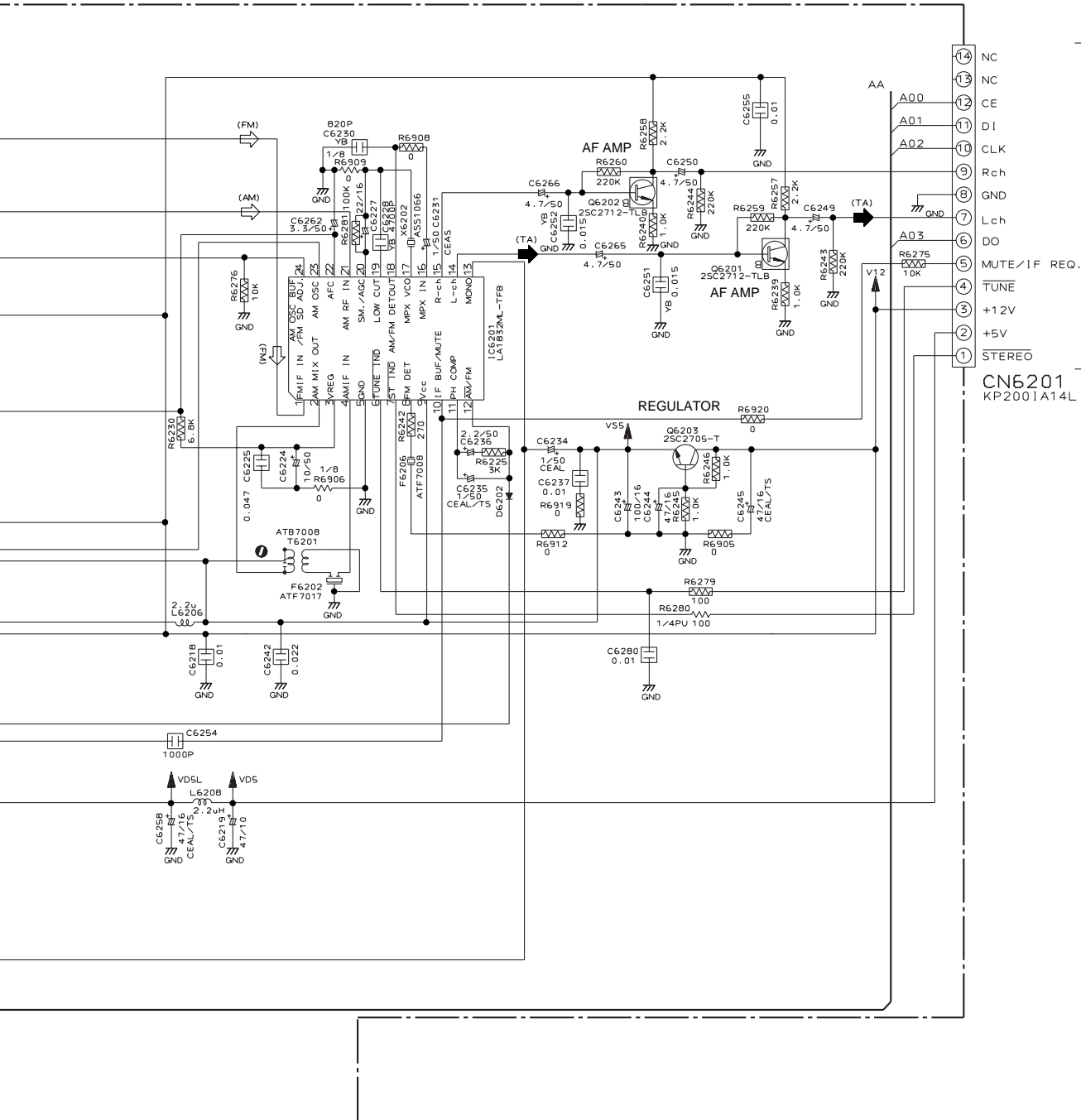
Indicated in  $\Omega$ ,  $1/10W \pm 5\%$  Tolerance unless otherwise noted K:K $\Omega$ , M:M $\Omega$ .

2. CAPACITORS

Indicated in Capacity ( $\mu F$ )/VOLTAGE (V) unless otherwise noted P:PF.

3. DIODES

No mark diode is 1SS254.



**F2/3** CN3051

- 14 NC
- 13 NC
- 12 CE
- 11 DI
- 10 A02
- 9 CLK
- 8 Rch
- 7 GND
- 6 Lch
- 5 DO
- 4 MUTE/IF REQ.
- 3 TUNE
- 2 +12V
- 1 +5V

CN6201  
KP2001A14L

1 2 3 4

# XR-A780, XR-A380, XR-A380SW, XR-A380GR

## 3.4 PRIMARY ASSY

### NOTES

ALL CAPACITORS ARE IN  $\mu\text{F}$

UNLESS OTHERWISE SPECIFIED

TL : CFTLA  
M : CQ MBA  
(OTHER : CKCYF)

CH : CCSRCH  
YF : CKSRYF  
SL : CCSRSL  
(OTHER : CKSRYB)

AL : CEAL  
HAQ : CEHAQ  
(OTHER : CEAS\*\*M## or CEAT\*\*M##)

ALL RESISTORS ARE IN  $\Omega$

1/16W (CHIP)

1/4WPU

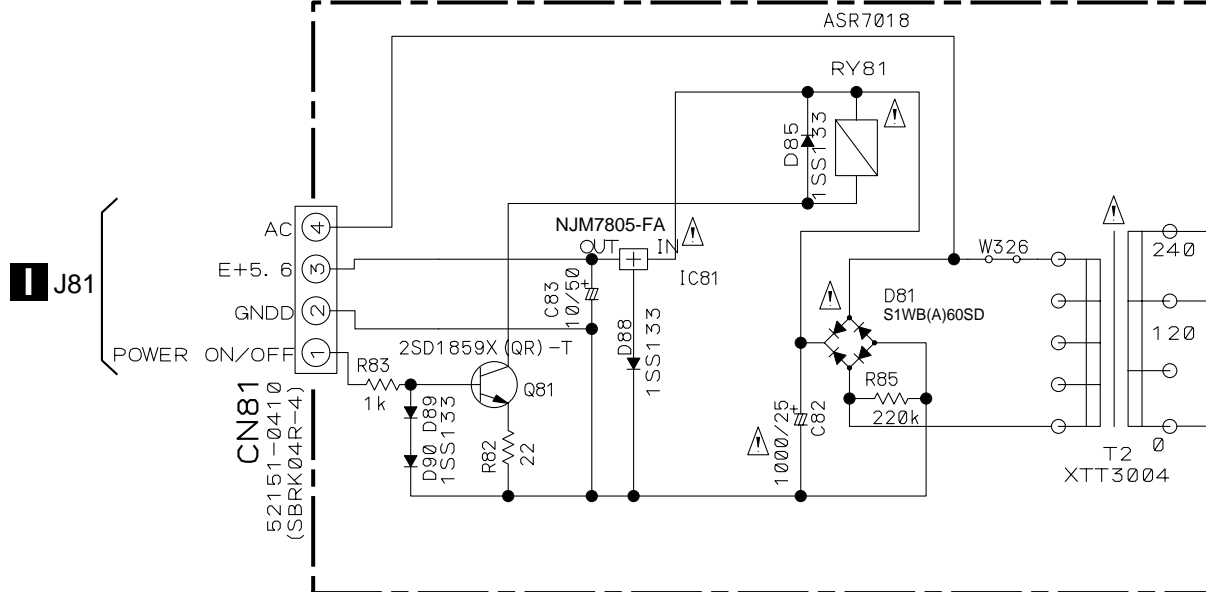
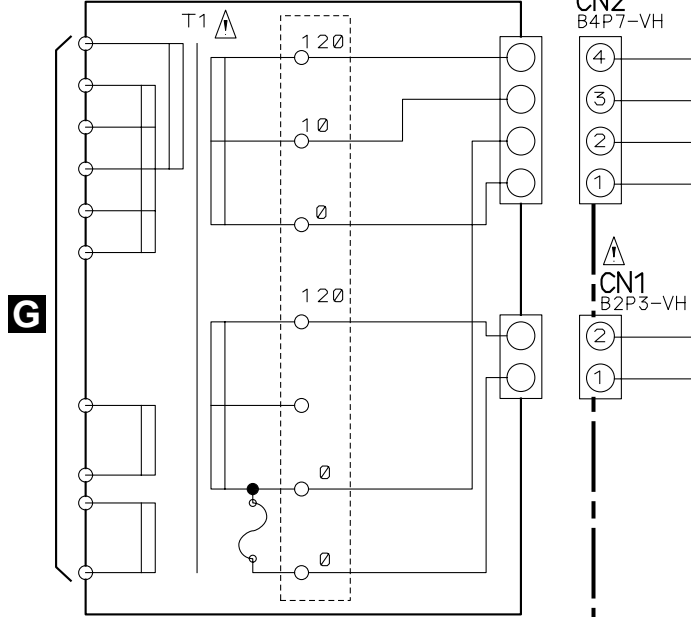
ALL INDUCTORS ARE IN  $\mu\text{H}$

LAU

NO MARK DIODE

1SS133

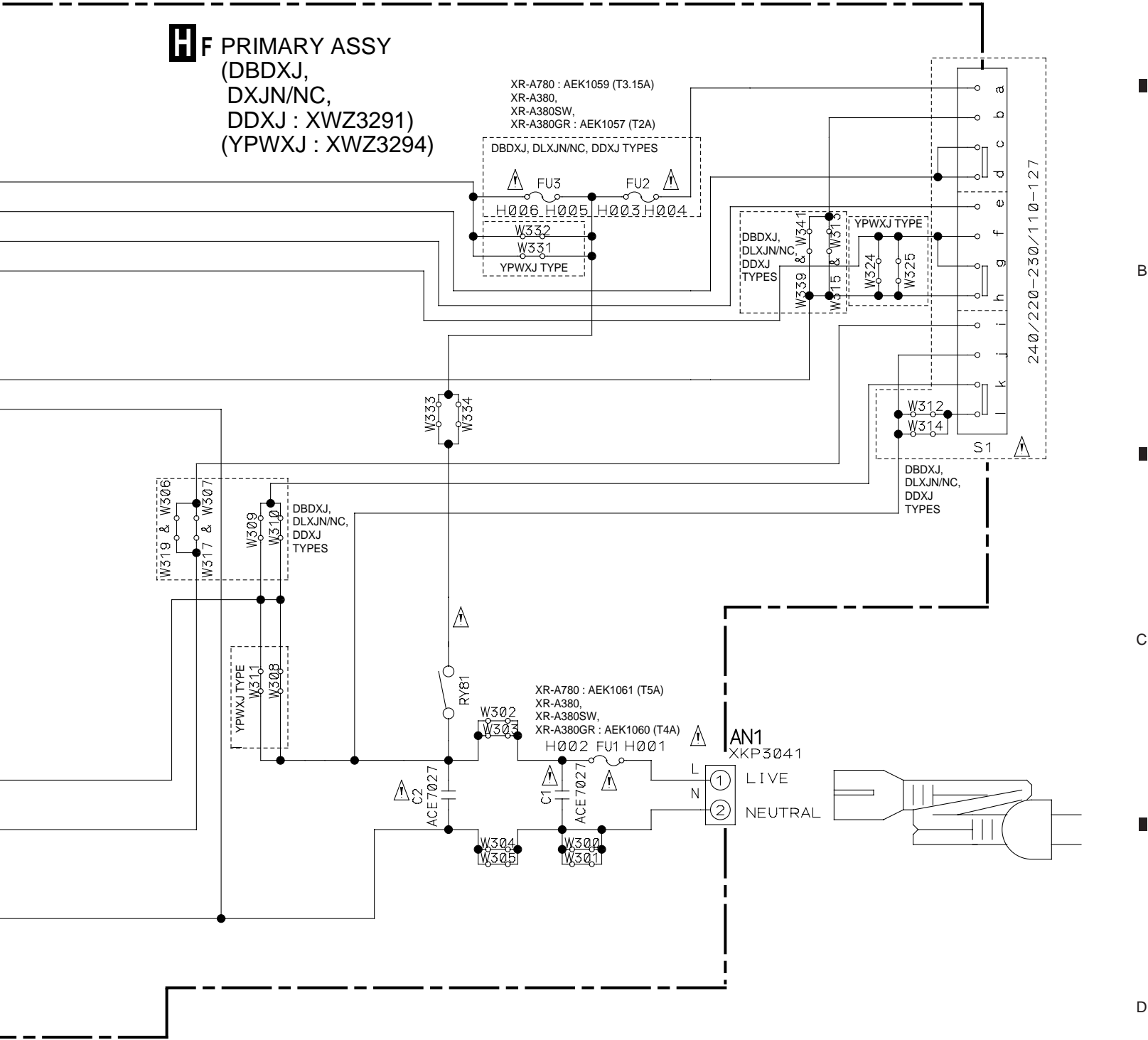
POWER TRANSFORMER  
XR-A780 : XTS3037  
XR-A380, XR-A380SW, XR-A380GR : XTS3036



• NOTE FOR FUSE REPLACEMENT

**CAUTION** -FOR CONTINUED PROTECTION AGAINST RISK OF FIRE.  
REPLACE WITH SAME TYPE AND RATINGS ONLY.

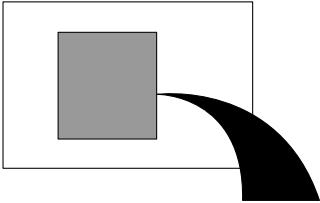
**HF** PRIMARY ASSY  
(DBDXJ,  
DXJN/NC,  
DDXJ : XWZ3291)  
(YPWXJ : XWZ3294)



# XR-A780, XR-A380, XR-A380SW, XR-A380GR

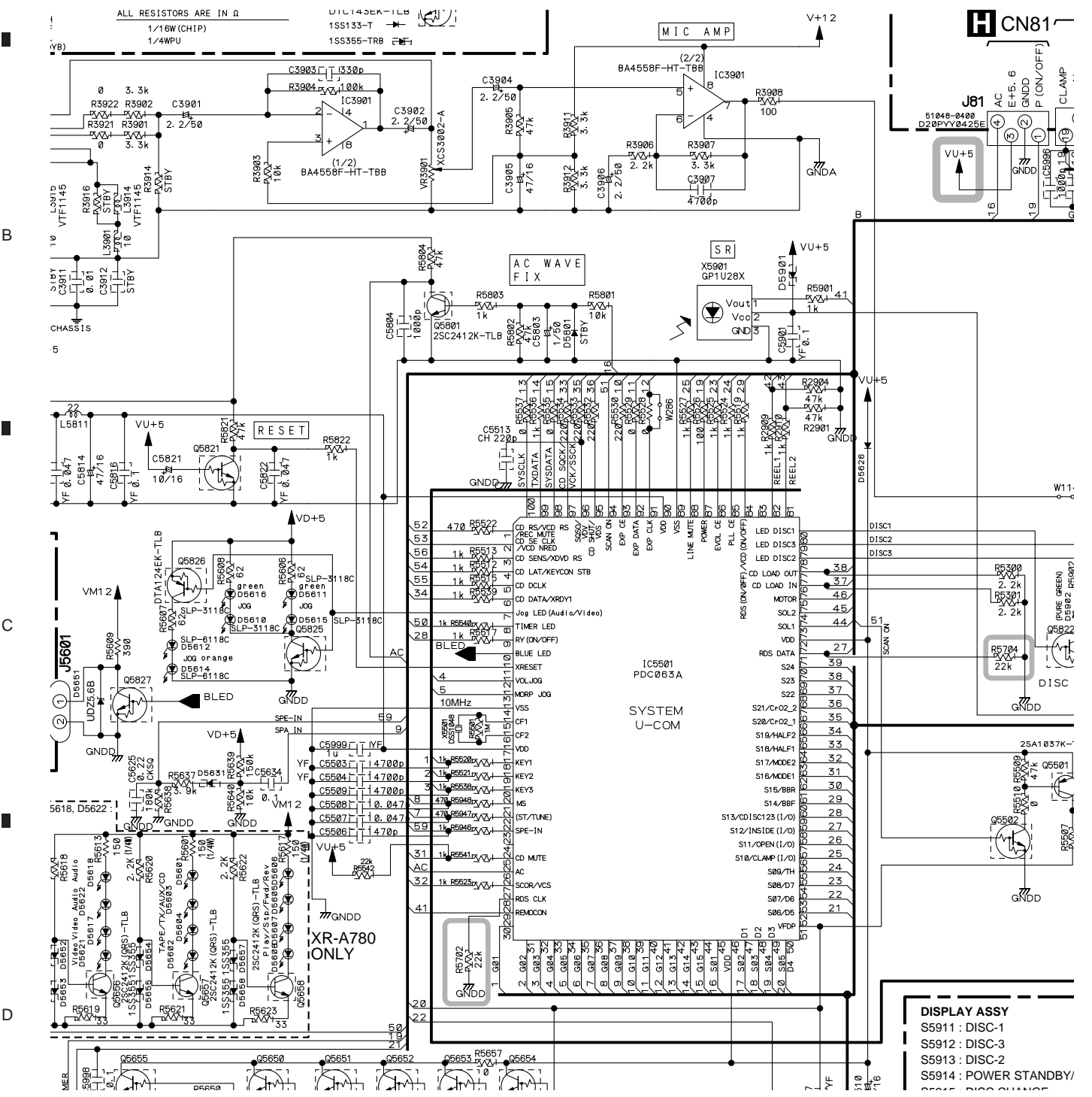
## 3.5 DISPLAY ASSY

A



DISPLAY ASSY (XR-A780 : XWZ3305)  
(XR-A380 : XWZ3290)

B



D

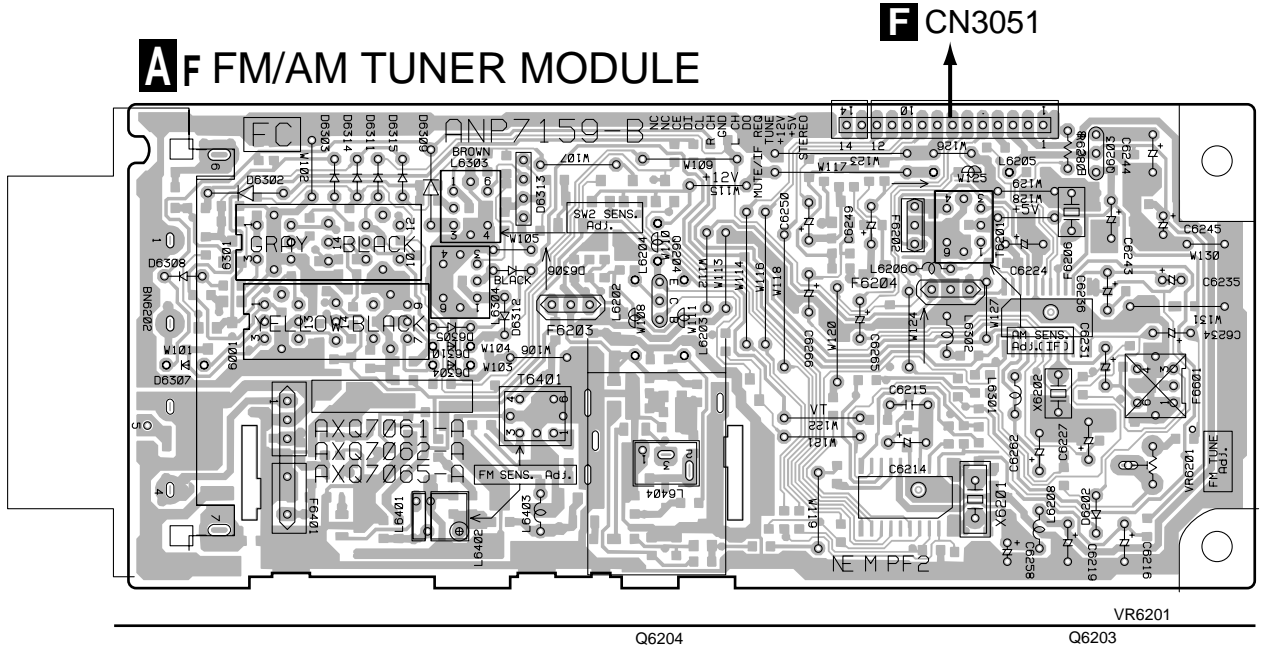
- DISPLAY ASSY**  
 S5911 : DISC-1  
 S5912 : DISC-3  
 S5913 : DISC-2  
 S5914 : POWER STANDBY/  
 DISC-4



# 4. PCB CONNECTION DIAGRAM

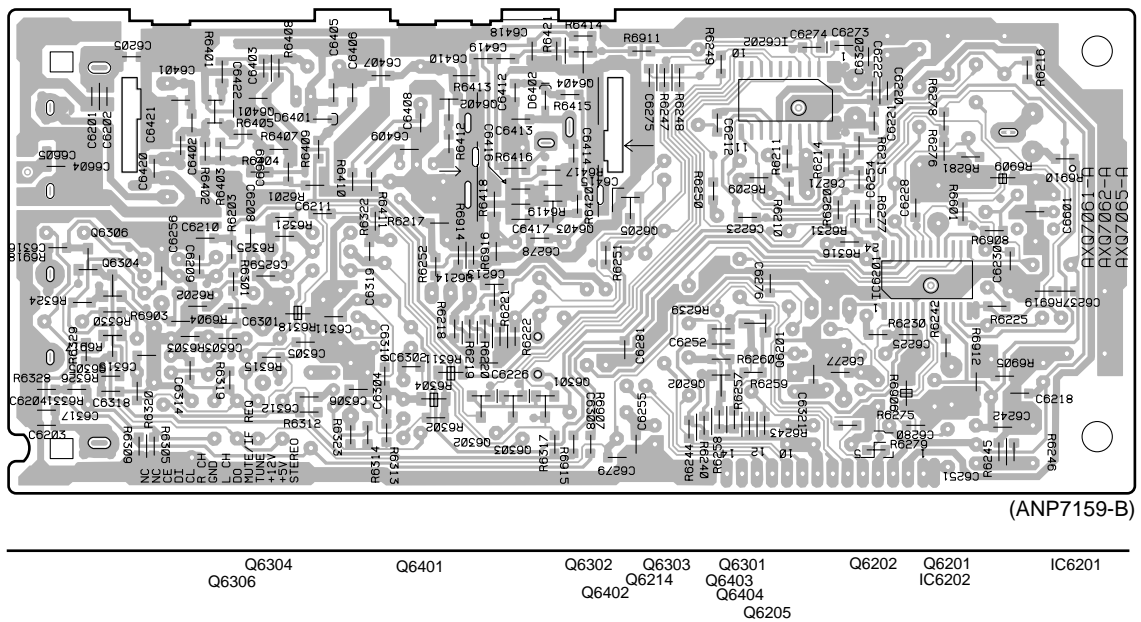
## 4.1 FM/AM TUNER MODULE

**A** F FM/AM TUNER MODULE



**SIDE A**

**A** F FM/AM TUNER MODULE



**SIDE B**

# XR-A780, XR-A380, XR-A380SW, XR-A380GR

## 5. ADJUSTMENT

Note : Adjustment of XR-A780 are the same as those of XR-A6800 except for the following:

Adjustment of XR-A380, XR-A380SW and XR-A380GR are the same as those of XR-A4800 except for the following:

### ■ FM Tuner Section

- Set the mode selector to FM BAND.
- Connect the wiring as shown in Fig. 1.

Step No.	Adjustment Title	FM SG (1kHz, ± 75kHz dev.)		Reception Frequency Display	Adjustment Location	Specifications
		Frequency (MHz)	Level (dB $\mu$ V)			
1	Front End Sensitivity	98	0 to 30	98MHz	L6402 T6401	Adjust so that the DC voltage between the IC6201 - pin 20 and GND becomes at maximum level.
2	TUNED IND. Lighting Level	98	18 ± 2	98MHz	VR6201	Adjust so that the indicator of TUNED IND. strats to light up.

Note:

Before adjusting, make sure there is no gap between L6401 and L6402. If there is a gap between them, bring them into contact with each other first, and then make adjustments.

### ■ AM Tuner Section

- Set the mode selector to AM BAND.
- Connect the wiring as shown in Fig. 1.

Step No.	Adjustment Title	AM SG (400Hz, 30% Mod.)		Reception Frequency Display	Adjustment Location	Specifications
		Frequency (kHz)	Level (dB $\mu$ V/m)			
1	Front End Sensitivity	999 (*1)	35 to 45	999kHz (*1)	T6201	Adjust so that the DC voltage between the IC6201 - pin 20 and GND becomes at maximum level.

Note (\*1) : For the area using 10kHz step, frequency should be 1000kHz.

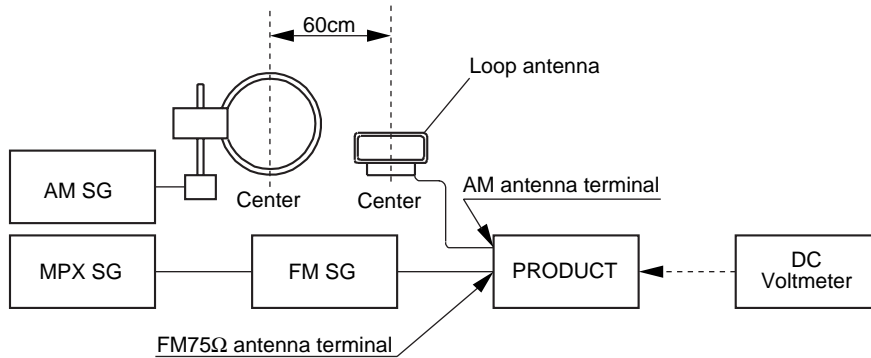


Fig.1 AM and FM Adjustment Wiring Diagram

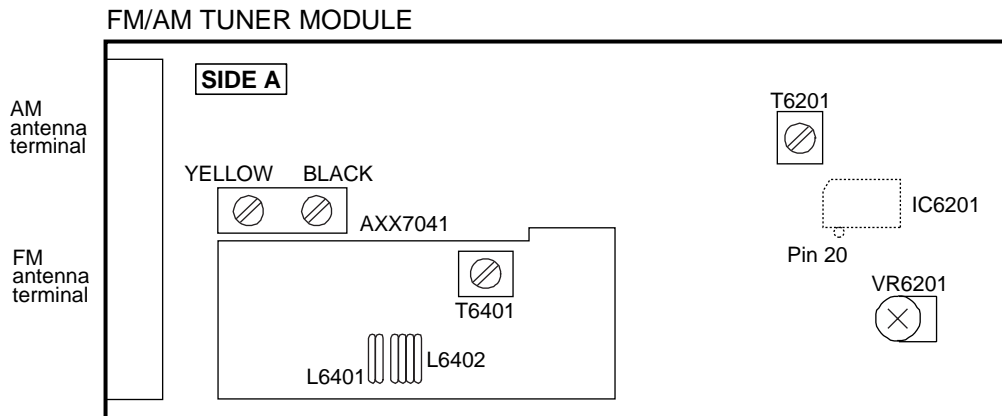


Fig.2 Adjustment Point



Note : XR-A380SW ONLY

■ **AM Tuner SW Section**

- Set the mode selector to SW2.
- Connect the wiring as shown in Fig. 3.

Step No.	Adjustment Title	AM SG (400Hz, 30% Mod.)		Reception Frequency Display	Adjustment Location	Specifications
		Frequency (MHz)	Input Level (dBμV/EMF)			
1	AM Front End Sensitivity Adjustment	14	25-35	14MHz	L6303	Adjust so that the DC voltage between the IC6201-Pin 20 and GND becomes at maximum level.

Before adjustment, connect AM-ANT. and IEC-dummy ANT.. Signal input is through IEC-dummy ANT.. Connecting AM-ANT. follows Fig. 3.

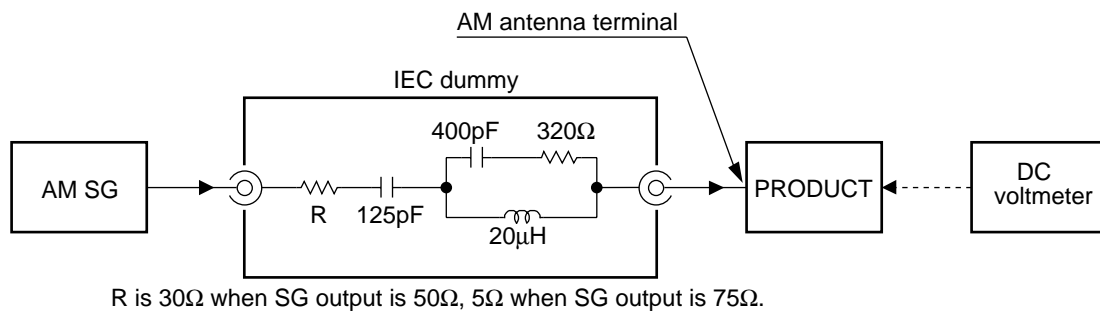


Fig. 3 SW adjustment wiring diagram

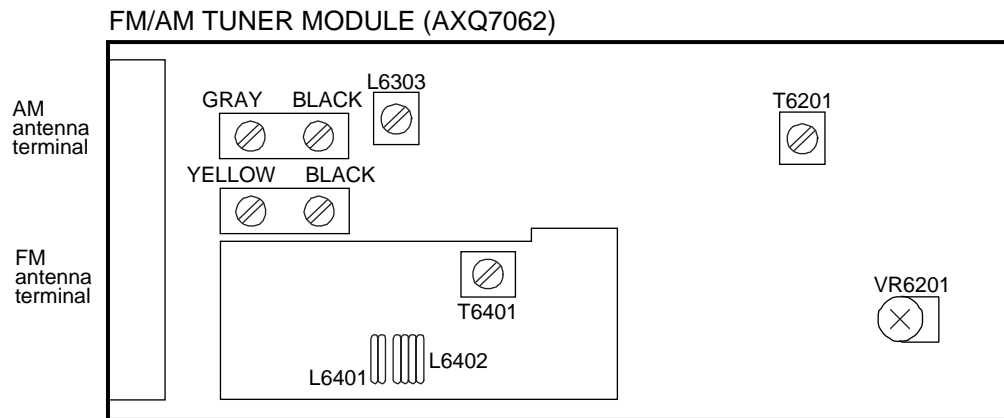


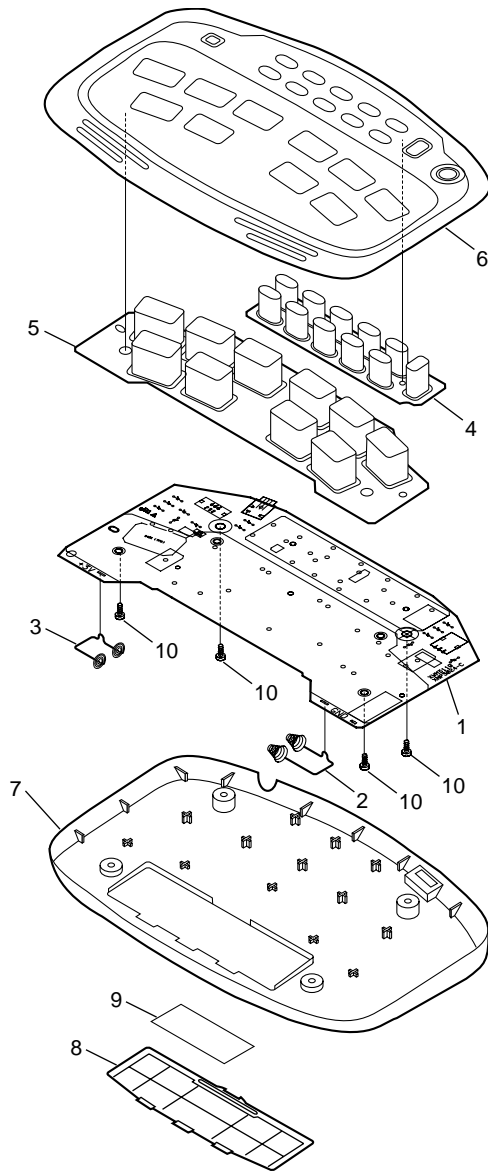
Fig. 4 Adjustment points

## 6. MUSIC PAD

### 6.1 EXPLODED VIEWS AND PARTS LIST

- NOTES:
- Parts marked by "NSP" are generally unavailable because they are not in our Master Spare Parts List.
  - The  $\Delta$  mark found on some component parts indicates the importance of the safety factor of the part. Therefore, when replacing, be sure to use parts of identical designation.
  - Screws adjacent to  $\blacktriangledown$  mark on the product are used for disassembly.

#### 6.1.1 MUSIC PAD



#### ● MUSIC PAD PARTS LIST

Mark	No.	Description	Part No.
	1	MUSIC PAD ASSY	XWM3119
	2	Battery Spring A	XBH3004
	3	Battery Spring B	XBH3005
	4	Rubber Button A	XAD3036
	5	Rubber Button B	XAD3037
	6	Top Cover	XAK3115
	7	Bottom Case	XAK3116
	8	Battery Cover	XMR3011
	9	Battery Label	XAX3162
	10	Screw	BPZ30P100FZK

## 6.2 PCB PARTS LIST

NOTES: ●Parts marked by "NSP" are generally unavailable because they are not in our Master Spare Parts List.

●The  $\Delta$  mark found on some component parts indicates the importance of the safety factor of the part. Therefore, when replacing, be sure to use parts of identical designation.

●When ordering resistors, first convert resistance values into code form as shown in the following examples.

Ex.1 When there are 2 effective digits (any digit apart from 0), such as 560 ohm and 47k ohm (tolerance is shown by J=5%, and K=10%).

560 $\Omega$	$\rightarrow$	$56 \times 10^1$	$\rightarrow$	561	.....	RD1/4PU	<table border="1"><tr><td>5</td><td>6</td><td>1</td></tr></table>	5	6	1	J
5	6	1									
47k $\Omega$	$\rightarrow$	$47 \times 10^3$	$\rightarrow$	473	.....	RD1/4PU	<table border="1"><tr><td>4</td><td>7</td><td>3</td></tr></table>	4	7	3	J
4	7	3									
0.5 $\Omega$	$\rightarrow$	R50	.....			RN2H	<table border="1"><tr><td>R</td><td>5</td><td>0</td></tr></table>	R	5	0	K
R	5	0									
1 $\Omega$	$\rightarrow$	1R0	.....			RS1P	<table border="1"><tr><td>1</td><td>R</td><td>0</td></tr></table>	1	R	0	K
1	R	0									

Ex.2 When there are 3 effective digits (such as in high precision metal film resistors).

5.62k $\Omega$	$\rightarrow$	$562 \times 10^1$	$\rightarrow$	5621	.....	RN1/4PC	<table border="1"><tr><td>5</td><td>6</td><td>2</td><td>1</td></tr></table>	5	6	2	1	F
5	6	2	1									

Mark	No.	Description	Part No.
------	-----	-------------	----------

### **KF** MUSIC PAD ASSY

#### SEMICONDUCTORS

IC501	LC7730M
IC701	NJU7002M
IC301	PD8067B
IC401	PD8068A
Q301, Q601, Q801	2SA1037K
Q603, Q803, Q901	2SD2114K
Q602, Q802	DTA114TK
Q302, Q501, Q502	DTC114TK
Q303	DTC144TK
D308, D310–D313, D407, D501	1SS355
D601, D602, D801, D802	1SS355
D301–D307, D401–D403	DAN202K
D309, D404–D406, D408	DAP202K

#### SWITCHES AND RELAYS

S901	XSH3001
------	---------

#### CAPACITORS

C301, C401	CCSQCH330J50
C702	CCSQCH331J50
C309, C502, C505, C506, C806	CEJA1R0M50
C305, C405, C901, C902	CEJA470M16
C306, C504	CEJA4R7M50
C501, C507	CKSQYB102K50
C708	CKSQYB153K50
C701, C703	CKSQYB562K50
C705	CKSQYB822K50
C302, C303, C402, C403, C406	CKSQYF104Z25
C503, C704	CKSQYF104Z25

#### RESISTORS

VR301 (10K $\Omega$ -B)	XCS3004
Other Resistors	RS1/10S□□□J

#### OTHERS

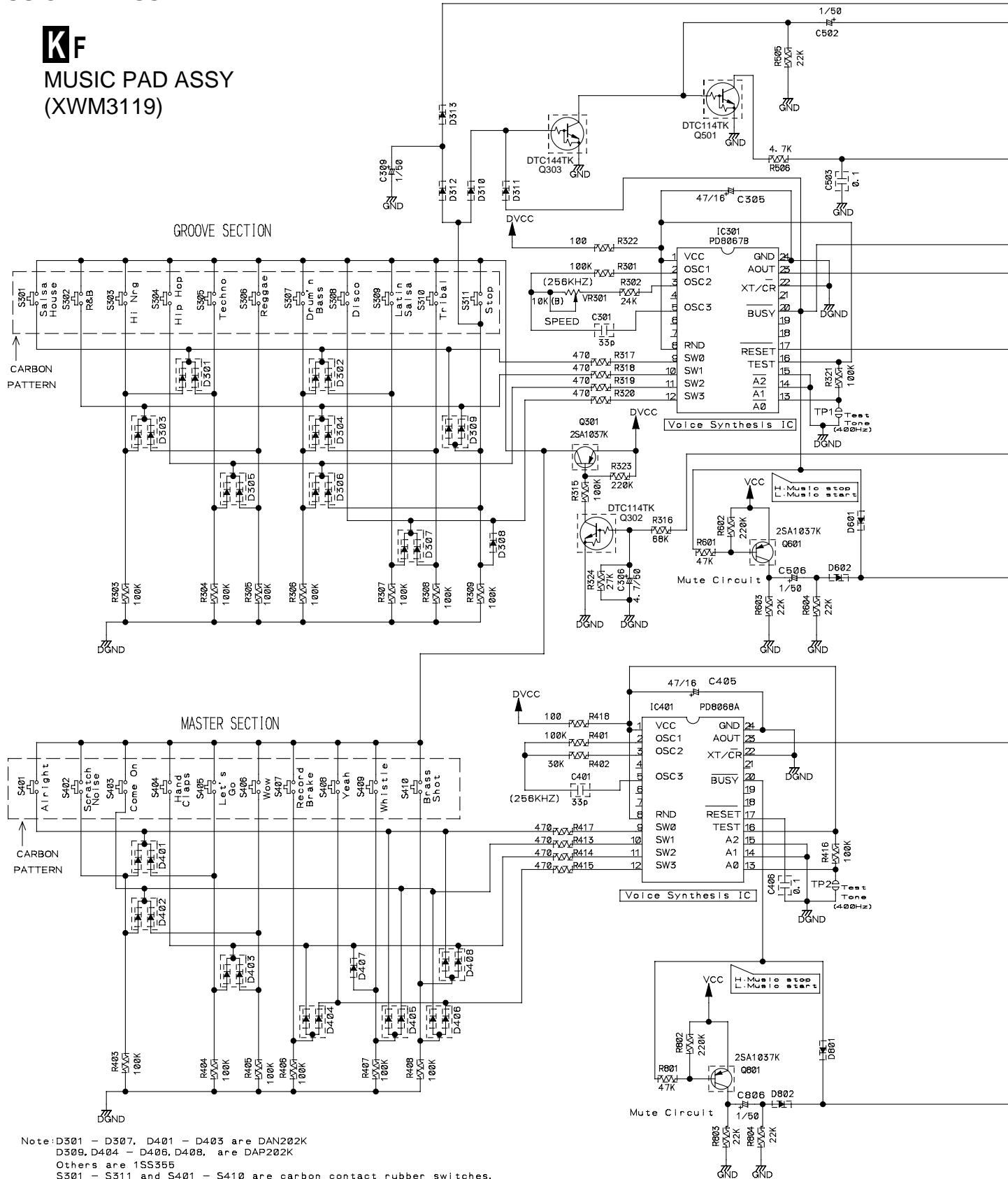
JA701	MINI JACK	XKN3005
-------	-----------	---------

## 6.3 SCHEMATIC DIAGRAM

### 6.3.1 MUSIC PAD ASSY



**MUSIC PAD ASSY  
 (XWM3119)**



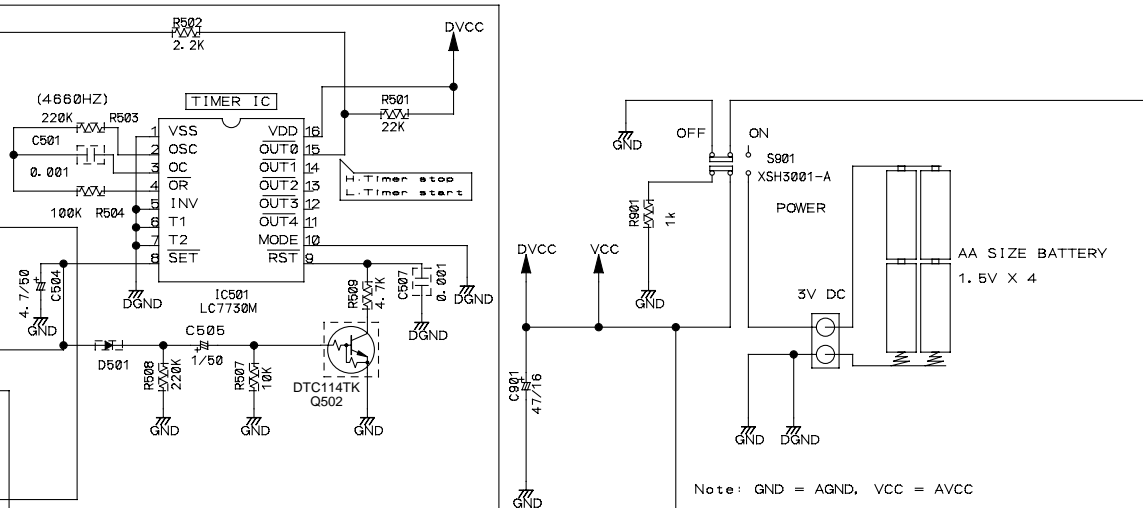
Note: D301 - D307, D401 - D403 are DAN202K  
 D309, D404 - D406, D408, are DAP202K  
 Others are 1SS555  
 S301 - S311 and S401 - S410 are carbon contact rubber switches.  
 All capacitors are in uF, unless otherwise specified.  
 All resistors are in Ohm, unless otherwise specified.



# XR-A780, XR-A380, XR-A380SW, XR-A380GR

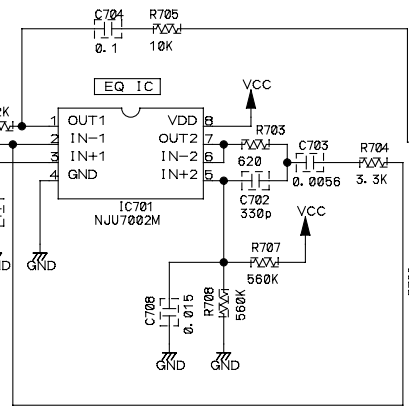
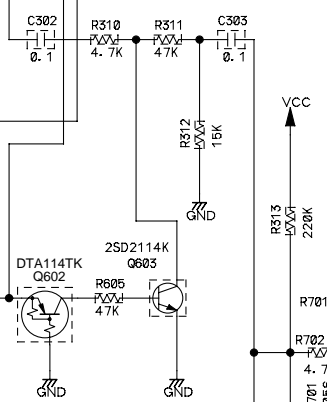
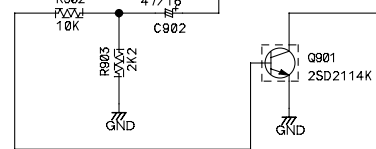
Note : When ordering service parts, be sure to refer to "EXPLODED VIEWS and PARTS LIST" or "PCB PARTS LIST"

Timer Circuit for Auto Shut Off

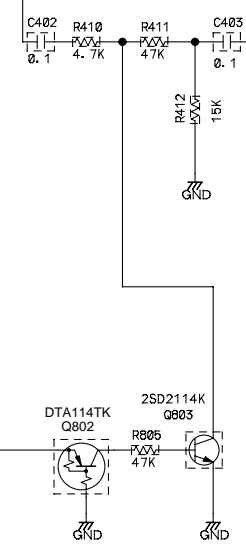
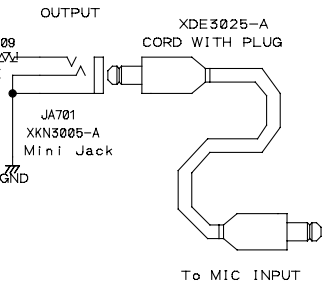


Note: GND = AGND, VCC = AVCC

Power On Mute Circuit



High Frequency Boost Op-Amp Circuit



- S301 : SALSA HOUSE
- S302 : R&B
- S303 : HI NRG
- S304 : HIP HOP
- S305 : TECHNO
- S306 : REGGAE
- S307 : DRUM'N BASS
- S308 : DISCO
- S309 : LATIN SALSA
- S310 : TRIBAL
- S311 : STOP
- S401 : ALRIGHT
- S402 : SCRATCH NOISE
- S403 : COME ON
- S404 : HAND CLAPS
- S405 : LET'S GO
- S406 : WOW
- S407 : RECORD BRAKE
- S408 : YEAH
- S409 : WHISTLE
- S410 : BRASS SHOT
- S901 : POWER ON/OFF

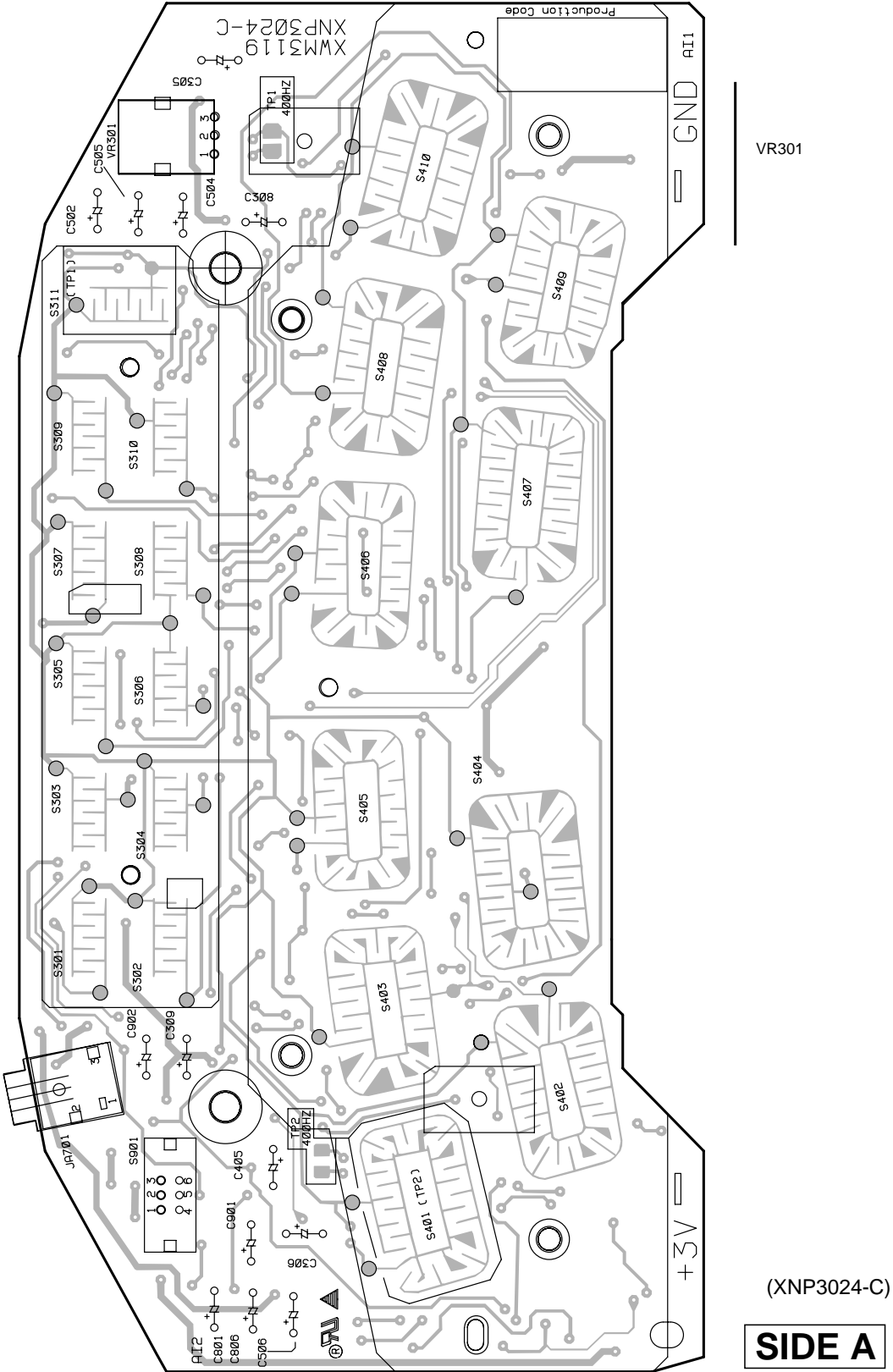
1 2 3 4

**XR-A780, XR-A380, XR-A380SW,  
XR-A380GR**

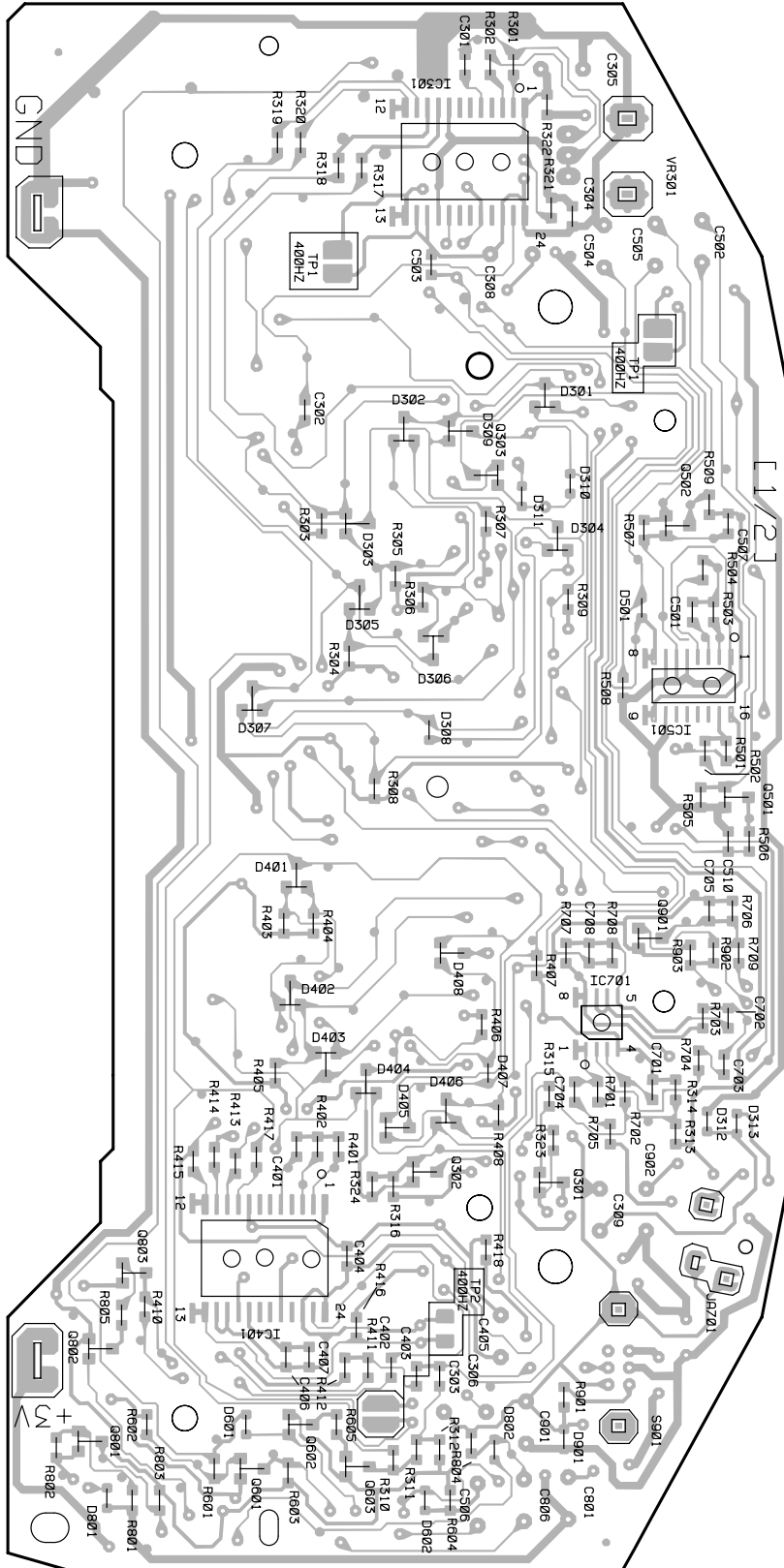
**6.4 PCB CONNECTION DIAGRAM**

**6.4.1 MUSIC PAD ASSY**

**KF MUSIC PAD ASSY**



**KF** MUSIC PAD ASSY



- IC301
- Q303
- Q502
- IC501
- Q501
- Q901
- IC701
- Q302
- Q301
- IC401
- Q803
- Q802
- Q602
- Q801
- Q601
- Q603

(XNP3024-C)  
**SIDE B**