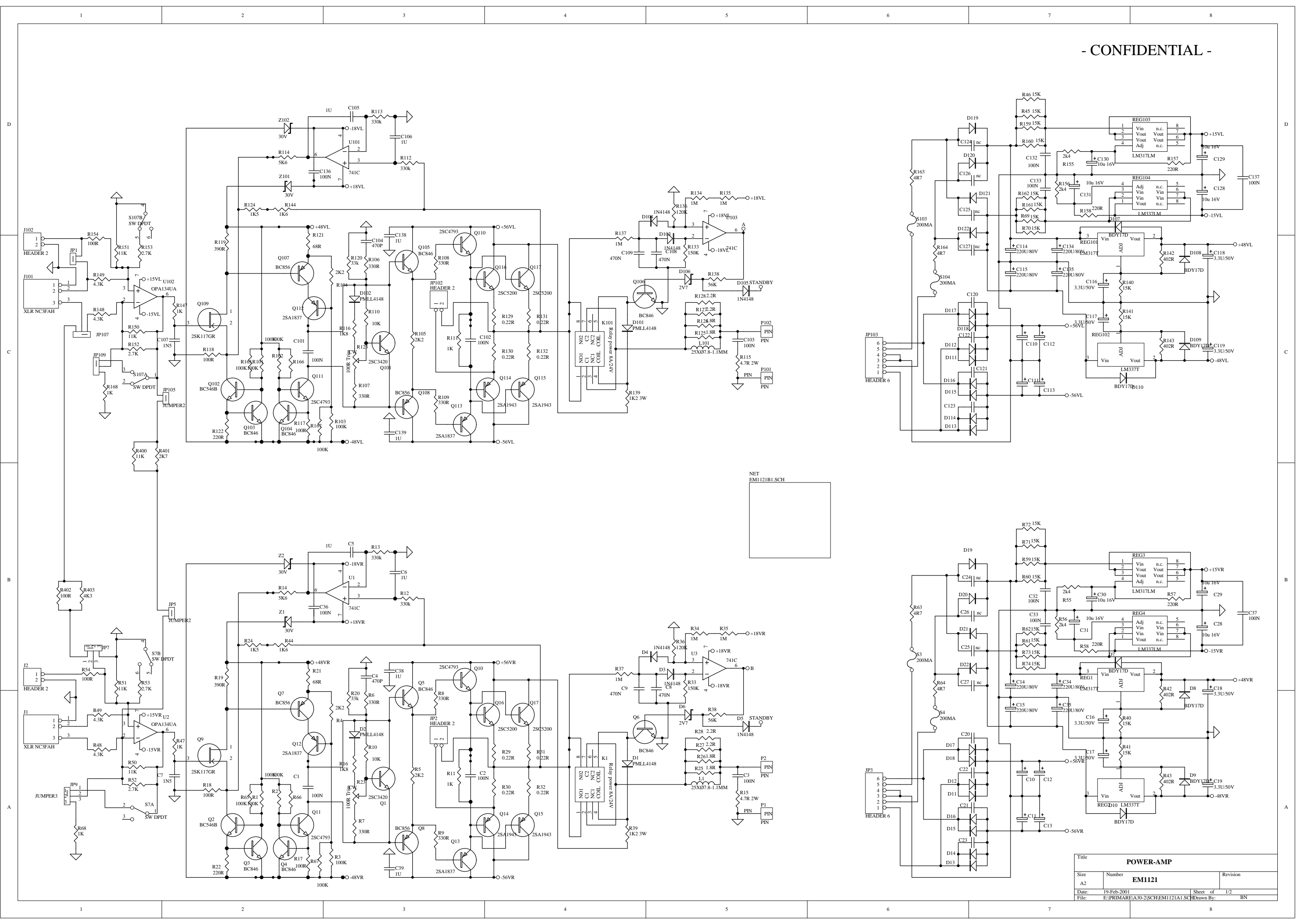


A30.2 POWER AMPLIFIER SERVICE MANUAL

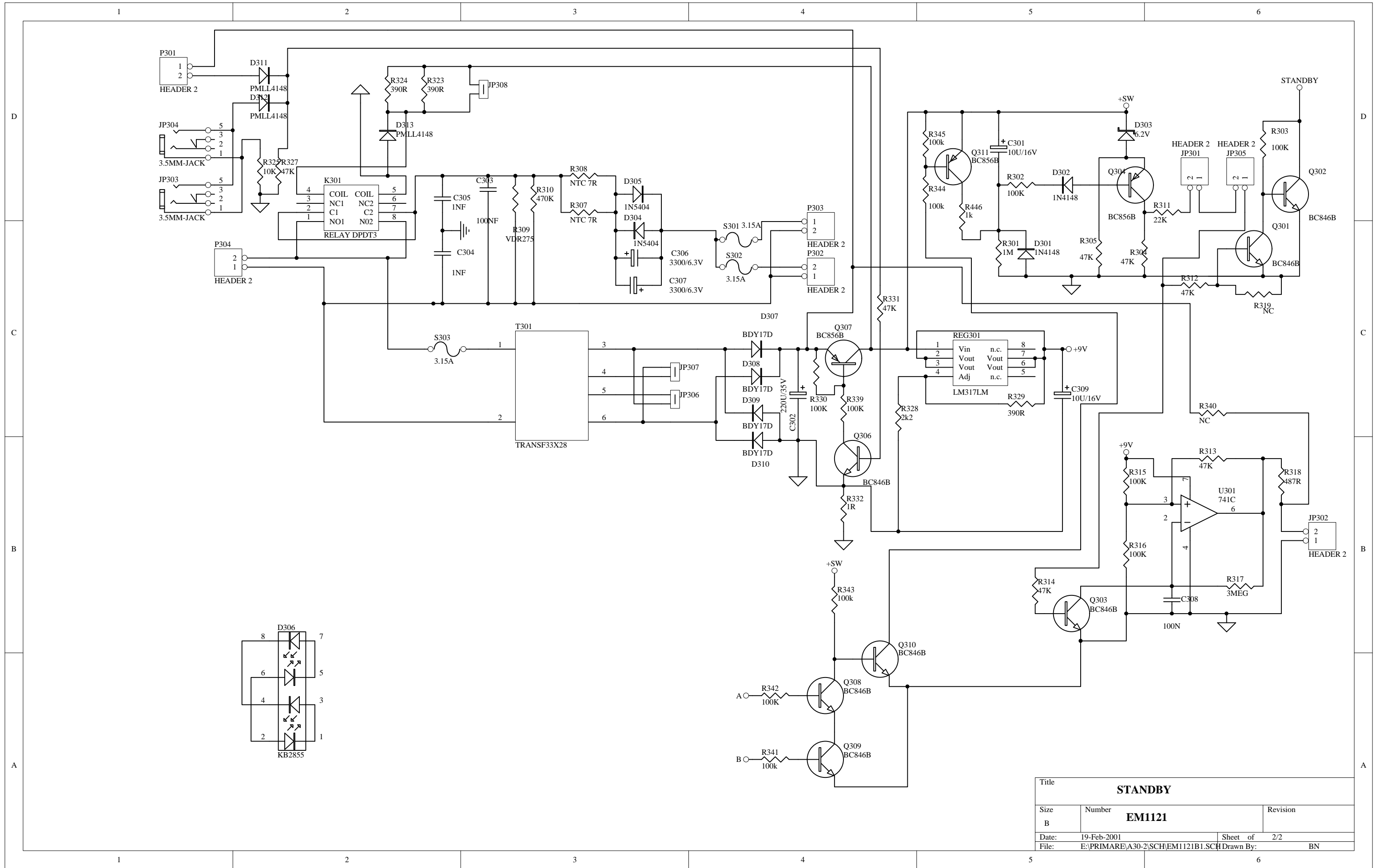
CONTENTS

1. CIRCUIT DIAGRAMS
2. ADJUSTMENT
4. PLACING AF JUMPER
5. TECHNICAL SPECIFICATIONS



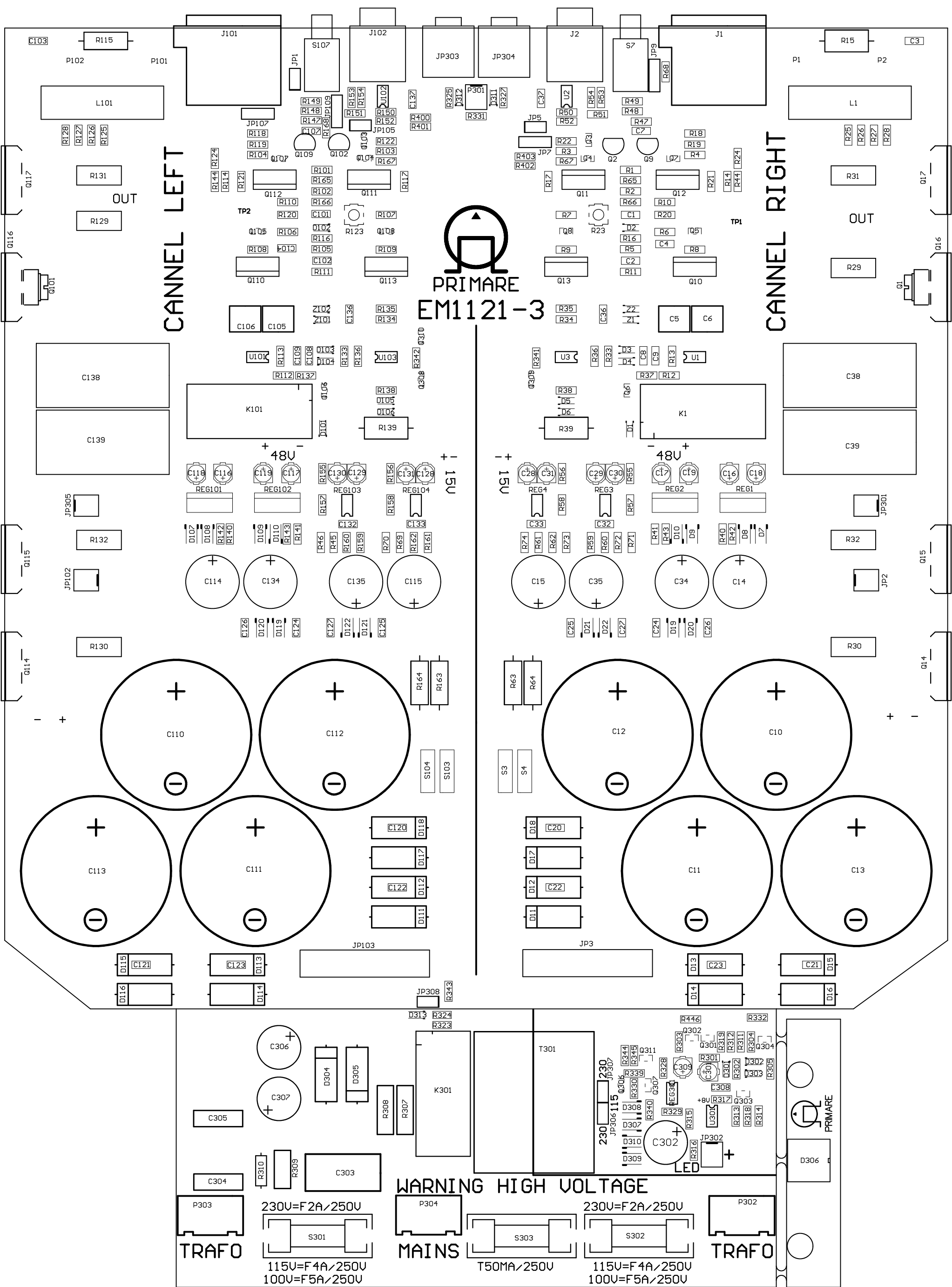
NET
EM1121B1.SCH

Title		
POWER-AMP		
Size	Number	Revision
A2	EM1121	
Date:	19-Feb-2001	Sheet of 1/2
File:	E:\PRIMARE\A30-2SCH\EM1121A1.SCH	Drawn By: BN



Title			STANDBY		
Size	Number	Revision			
B	EM1121				
Date:	19-Feb-2001	Sheet of	2/2		
File:	E:\PRIMARE\A30-2\SCH\EM1121B1.SCH		Drawn By:	BN	

PRIMARE
EM1121-3



CANNEL LEFT

CANNEL RIGHT

WARNING HIGH VOLTAGE

TRAFO

MAINS

TRAFO

230V=F 2A/250V
115V=F 4A/250V
100V=F 5A/250V

230V=F 2A/250V
115V=F 4A/250V
100V=F 5A/250V



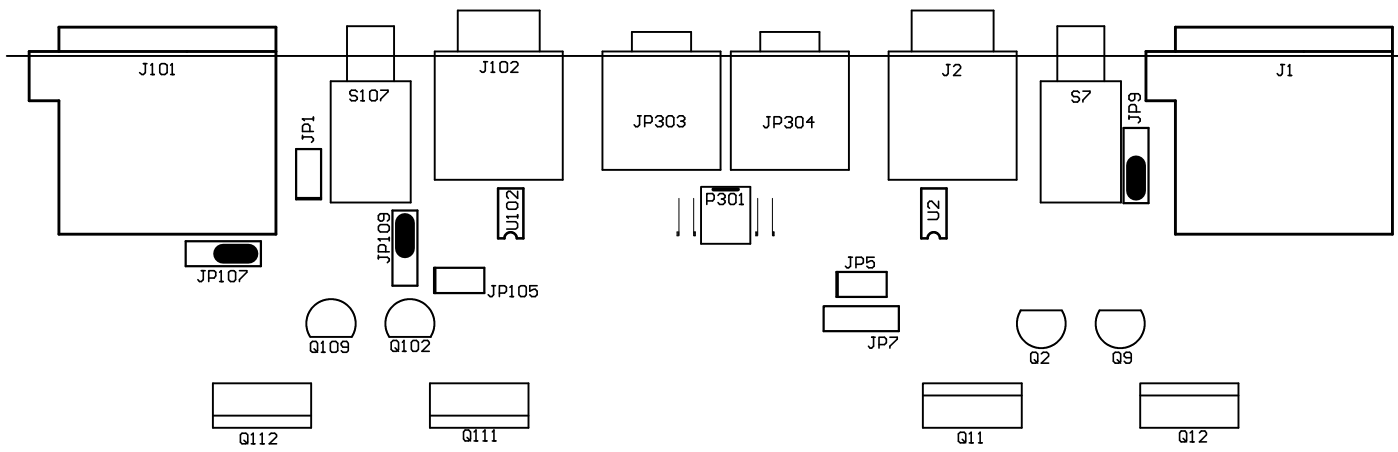
PRIMARE

IDLE CURRENT ADJUSTMENT

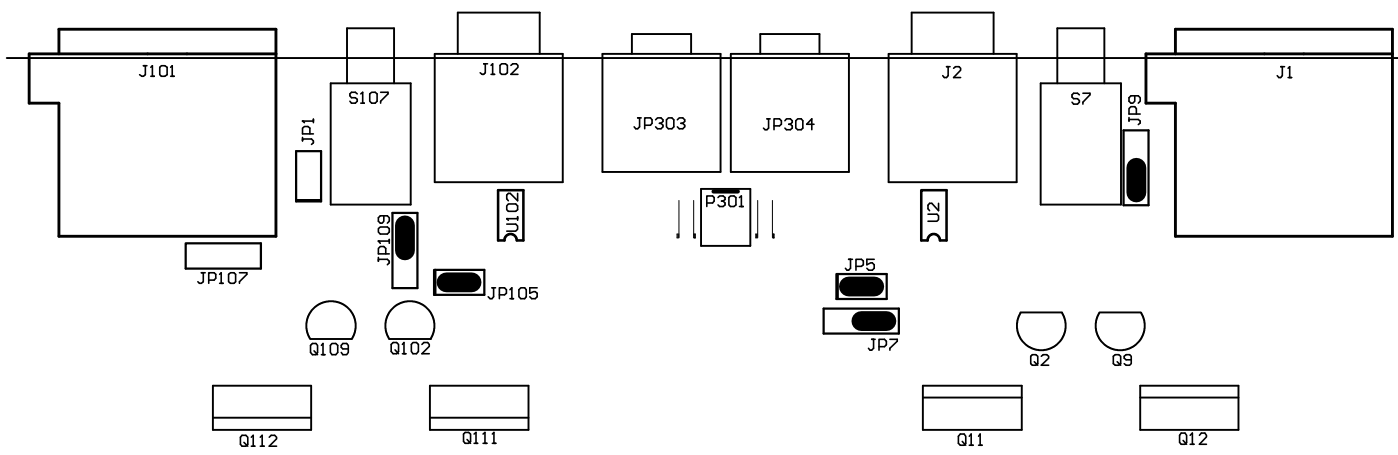
- 1: Connect the voltmeter to JP2 (JP102)
 ADJUST R23 (R123) TO 20mV
2. After the power has been on for 60 min
 readjust R23 (R123)
3. Remove the voltmeter.

Instructions apply to the Right channel.
Instructions given in brackets apply to the
Left channel.

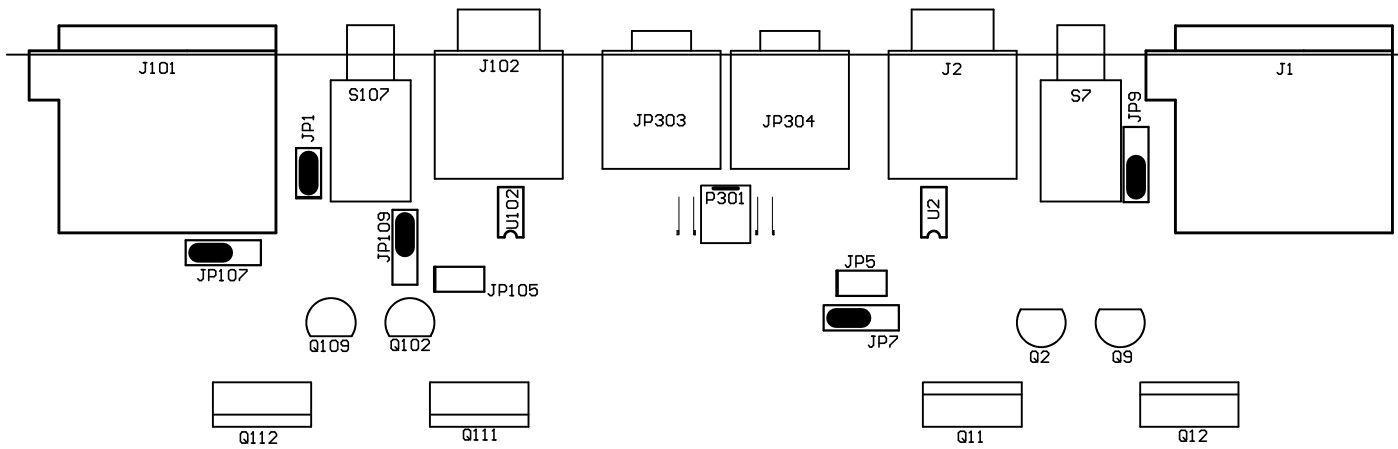
PLACING AF JUMPER



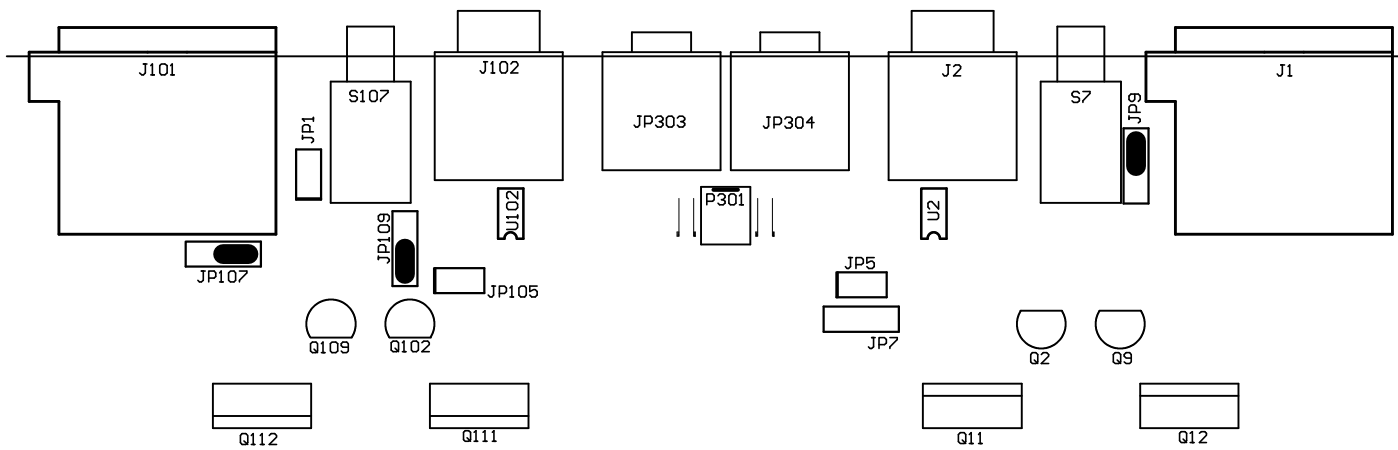
2X120W
STANDARD XLR AND RCA IN



1X380W
IN LEFT RCA
SPEAKER + TO (+ LEFT SPEAKER)
SPEAKER - TO (+ RIGHT SPEAKER)
INPUT SWITCH LEFT TO RCA
INPUT SWITCH RIGHT TO XLR



1X380W
IN LEFT XLR
SPEAKER + TO (+ LEFT SPEAKER)
SPEAKER - TO (+ RIGHT SPEAKER)
INPUT SWITCH LEFT TO RCA
INPUT SWITCH RIGHT TO RCA



2X120W SENSITIVITY ADJUST TO A20
IN LEFT RCA AND RIGHT RCA
INPUT SWITCH LEFT TO RCA
INPUT SWITCH RIGHT TO RCA

TECHNICAL SPECIFICATIONS

Output power per channel	120W/8 ohm,200W/4 ohm (1X400W)
Output impedance	0.03 ohm
DC offset	<5mV
Frequency response	<10HZ-100KHZ -3db
Signal to noise A-weighted	100 dB
THD+noise	<0.08%
Standby	<3.5W
DIMENSIONS (WXDXH)	430X385X100 MM
Weight	16Kg