



PRIMARE



**CD32 CD Player
Service Manual**

1. Schematics and Pcb.
2. Technical specification.

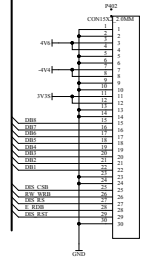
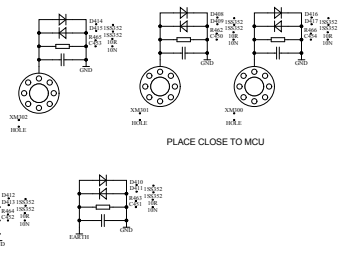
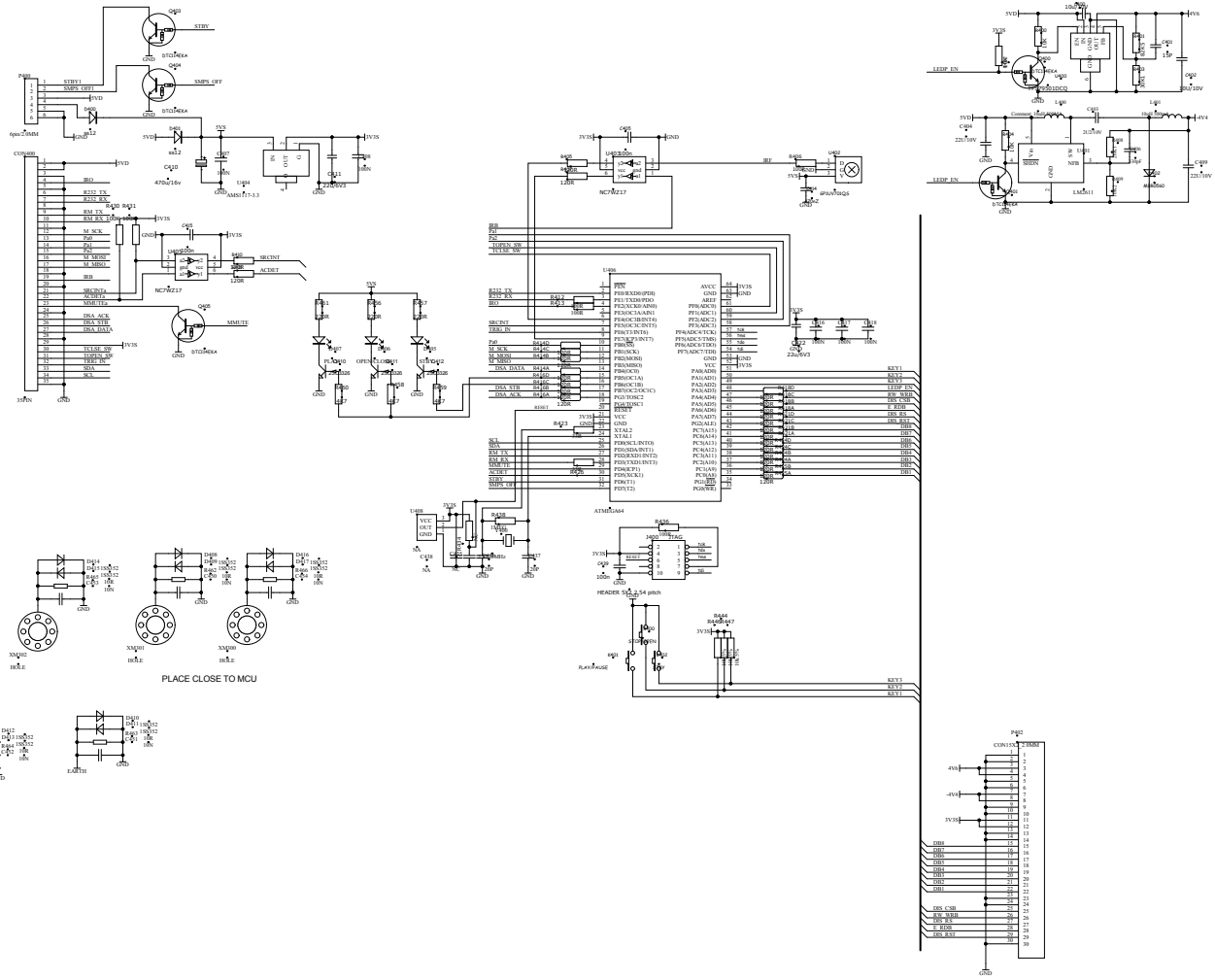
Confidential !

This document is not allowed to show for third part without written permission from Primare AB.

This document is subject to change without notice.

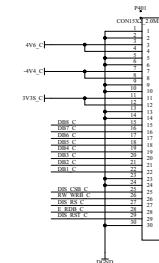
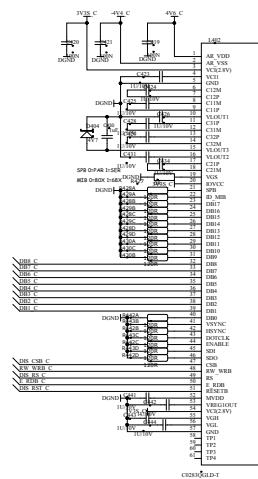
Author:

Bjorn Holmqvist
Primare AB



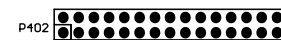
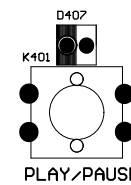
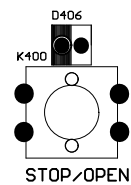
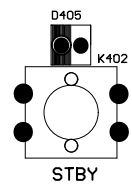
REV.	ECN No.	DESCRIPTION	Date	APPRO.

Hansong (Nanjing) Technology Ltd. No.HS/OR-RD-25		Sheet:
<small>THE INFORMATION CONTAINED IN THIS DRAWING IS THE SOLE PROPERTY OF HANSONG ENTERPRISES CO. LTD. ANY REPRODUCTION IN PART OF WHOLE WITHOUT THE WRITTEN PERMISSION OF HANSONG ENTERPRISES CO. LTD. IS PROHIBITED</small>		State:
Document Number:	HS40-CD32_FPP VM1-0.SCH	PL Checked by:
Project:	CD32	Approved by:
Drafted by:	Dheny	Date:
Date:	2010.09.01	Date:

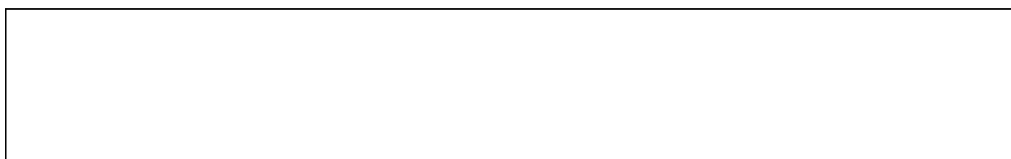


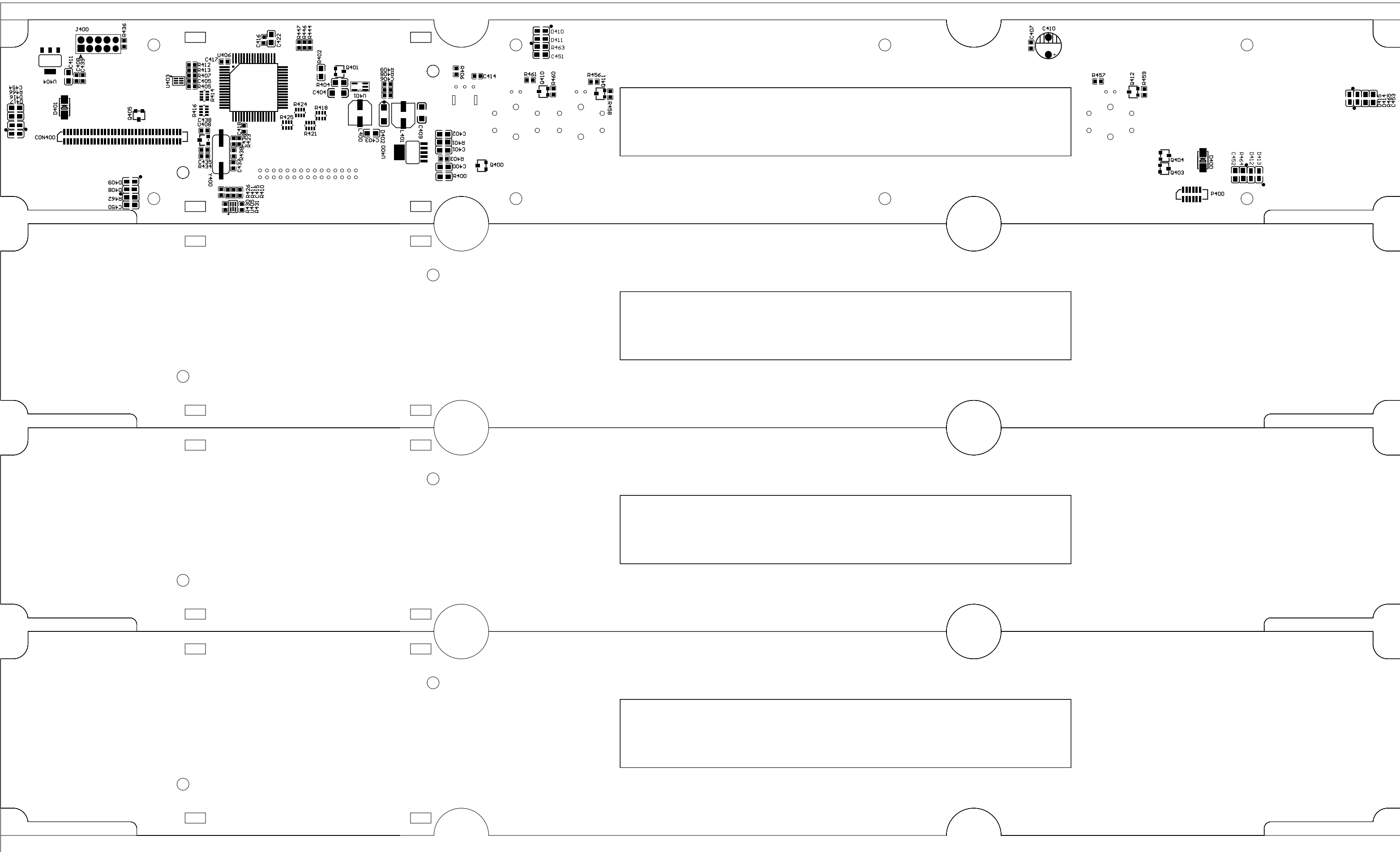
REV.	ECN No.	DESCRIPTION	Date	APPRO.

Hansong (Nanjing) Technology Ltd.
No.HS/OR-RD-25
 THE INFORMATION CONTAINED IN THIS DRAWING IS THE SOLE PROPERTY OF HANSONG ENTERPRISES CO.LTD. ANY REPRODUCTION IN PART OR WHOLE WITHOUT THE WRITTEN PERMISSION OF HANSONG ENTERPRISES CO.LTD. IS PROHIBITED
 Document Number: HS40-CD32_OLED VM1-0.SCH Sheet:
 Project: CD32 State:
 Drafted by: Dheny PL Checked by: Approved by:
 Date: 2010.09.01 Date: Date:

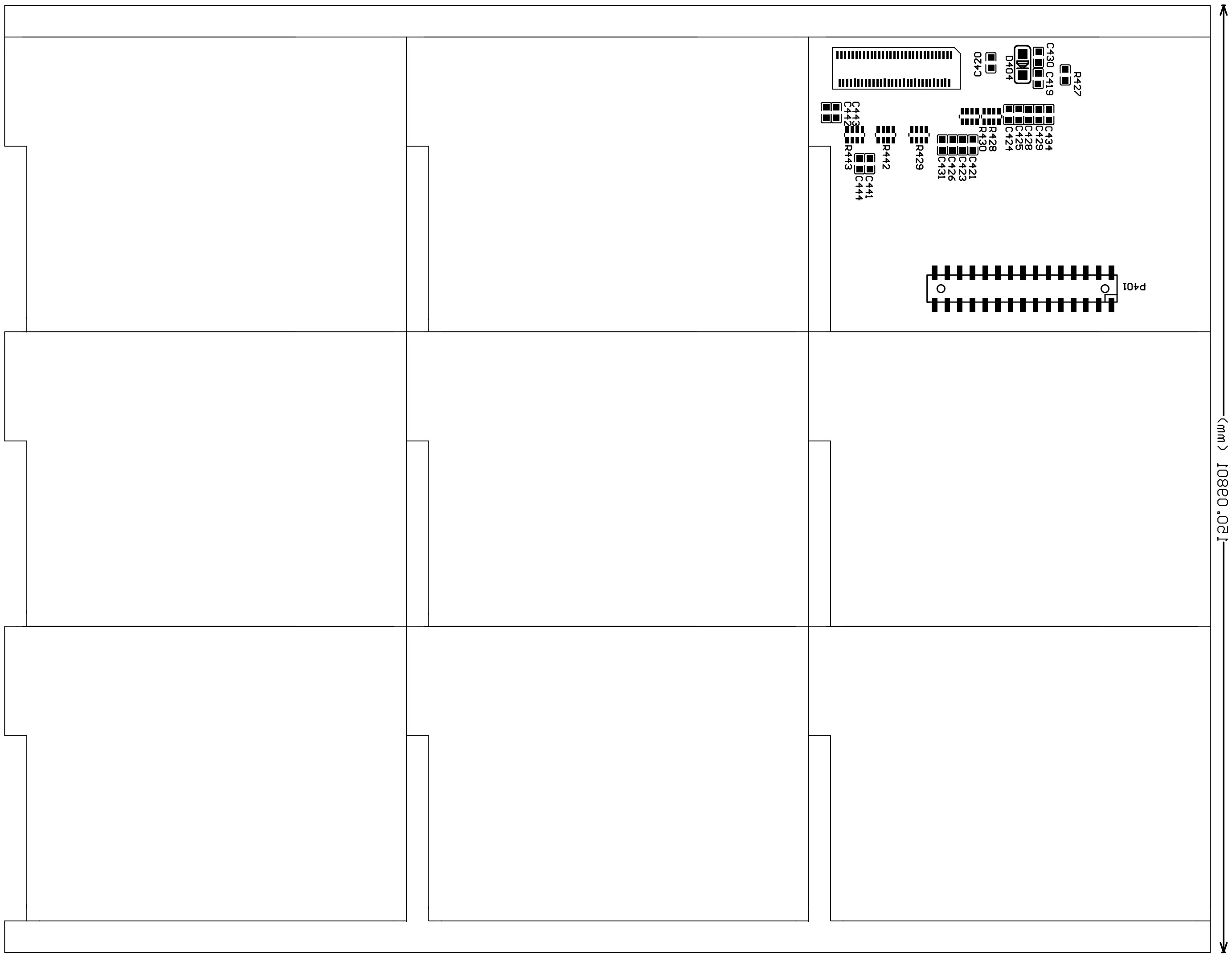


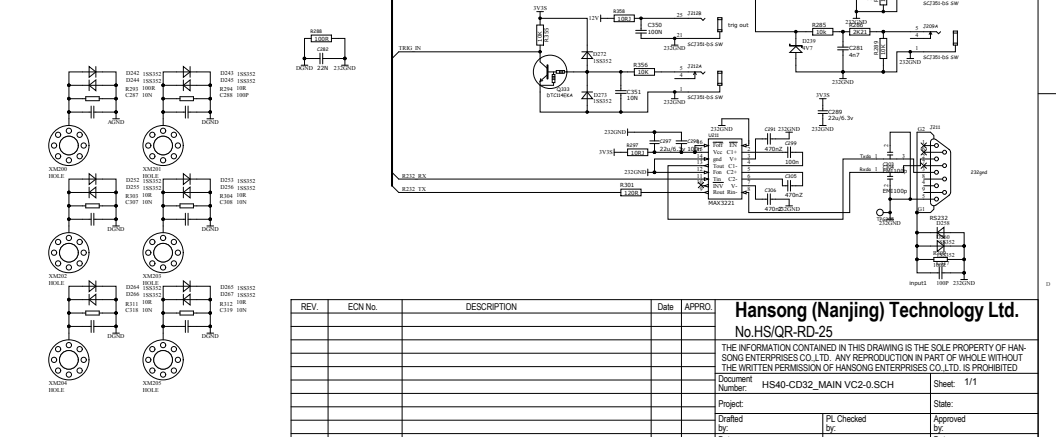
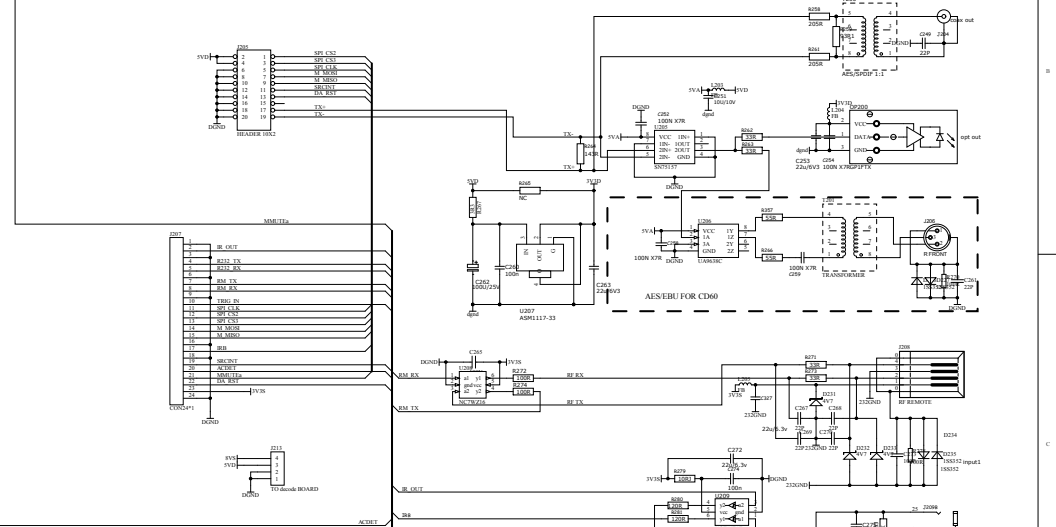
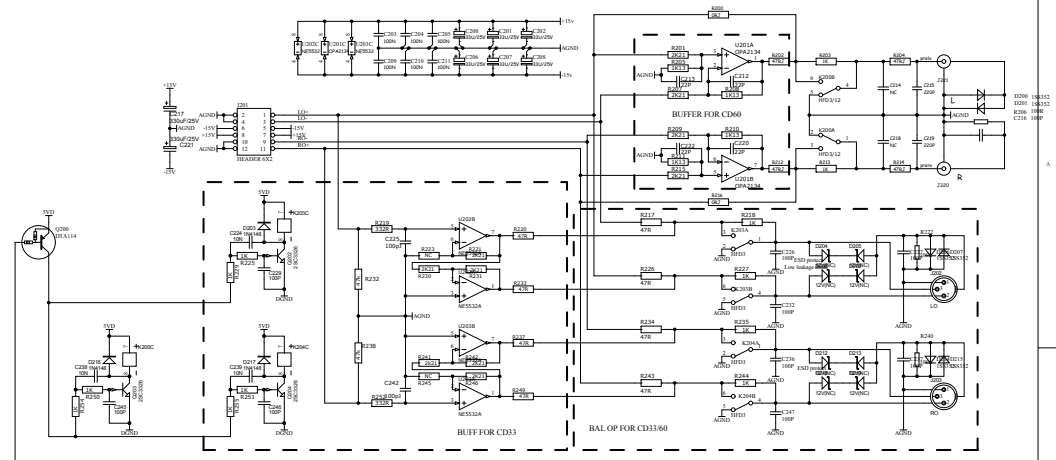
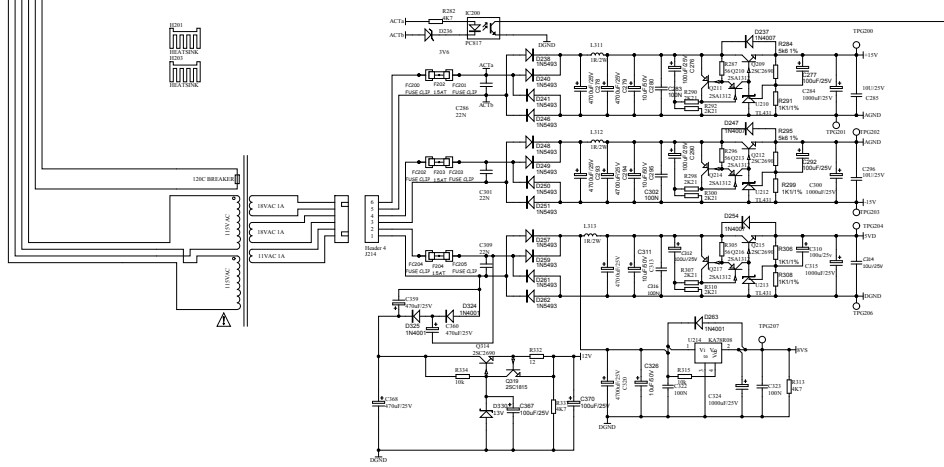
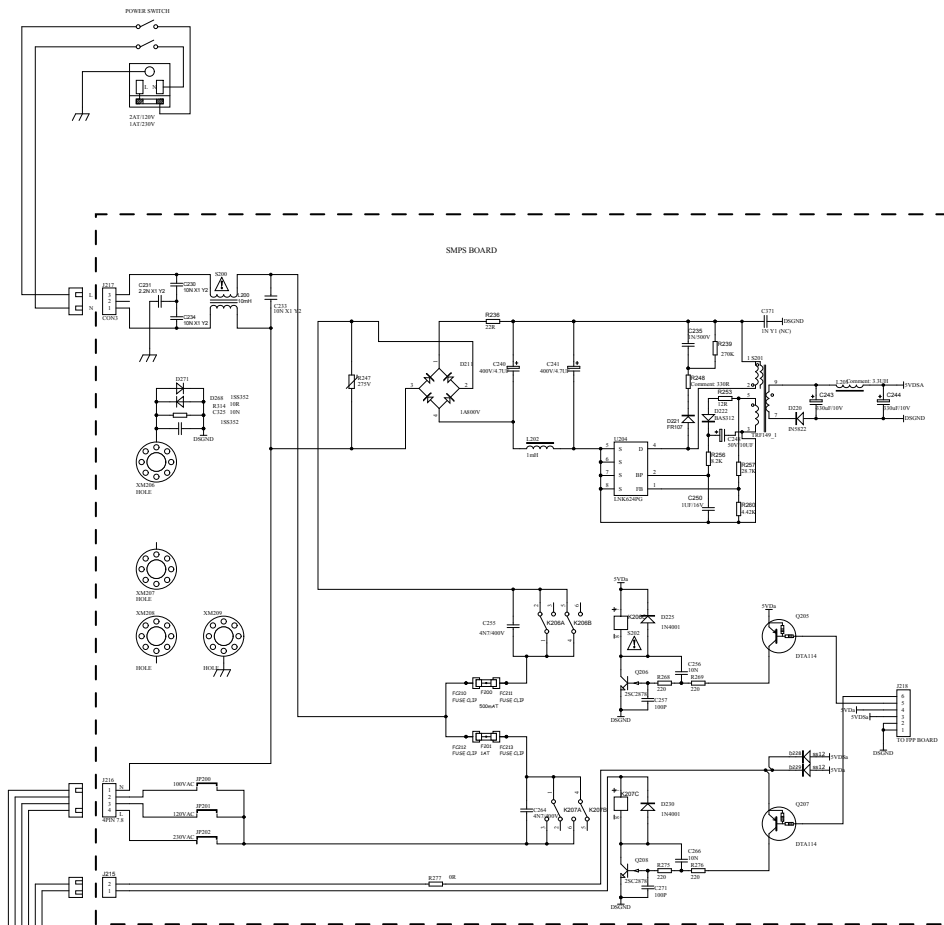
UM1.0 2010.09.01
16-43204-21





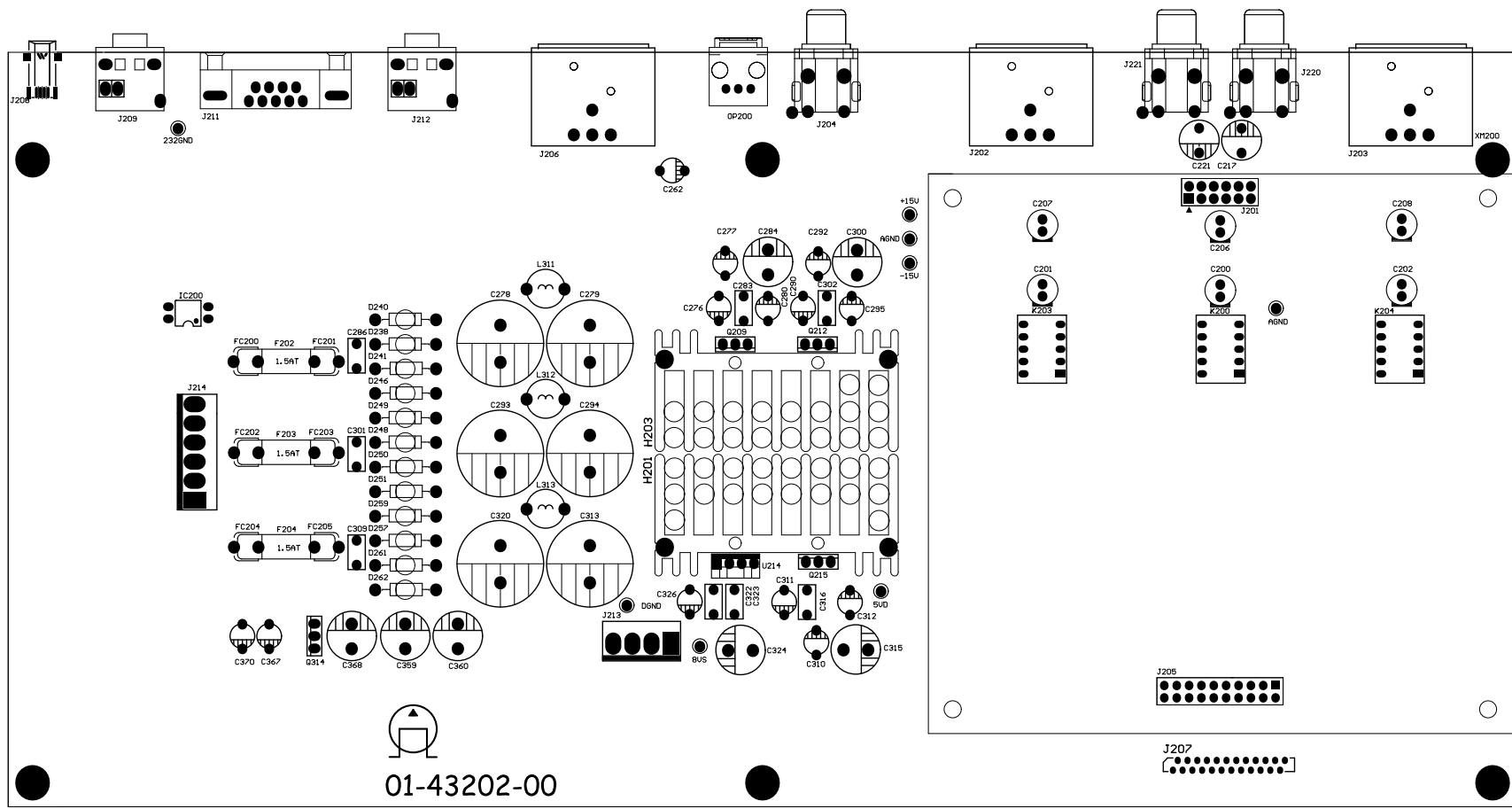
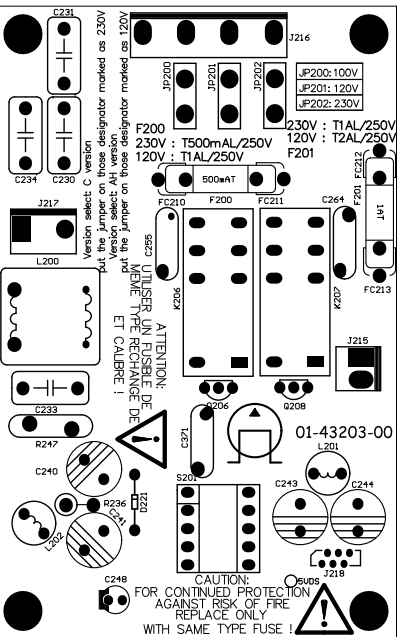
10101.1e1 (mm)

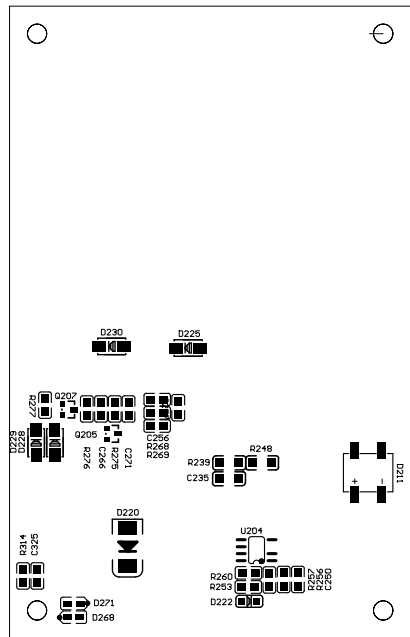
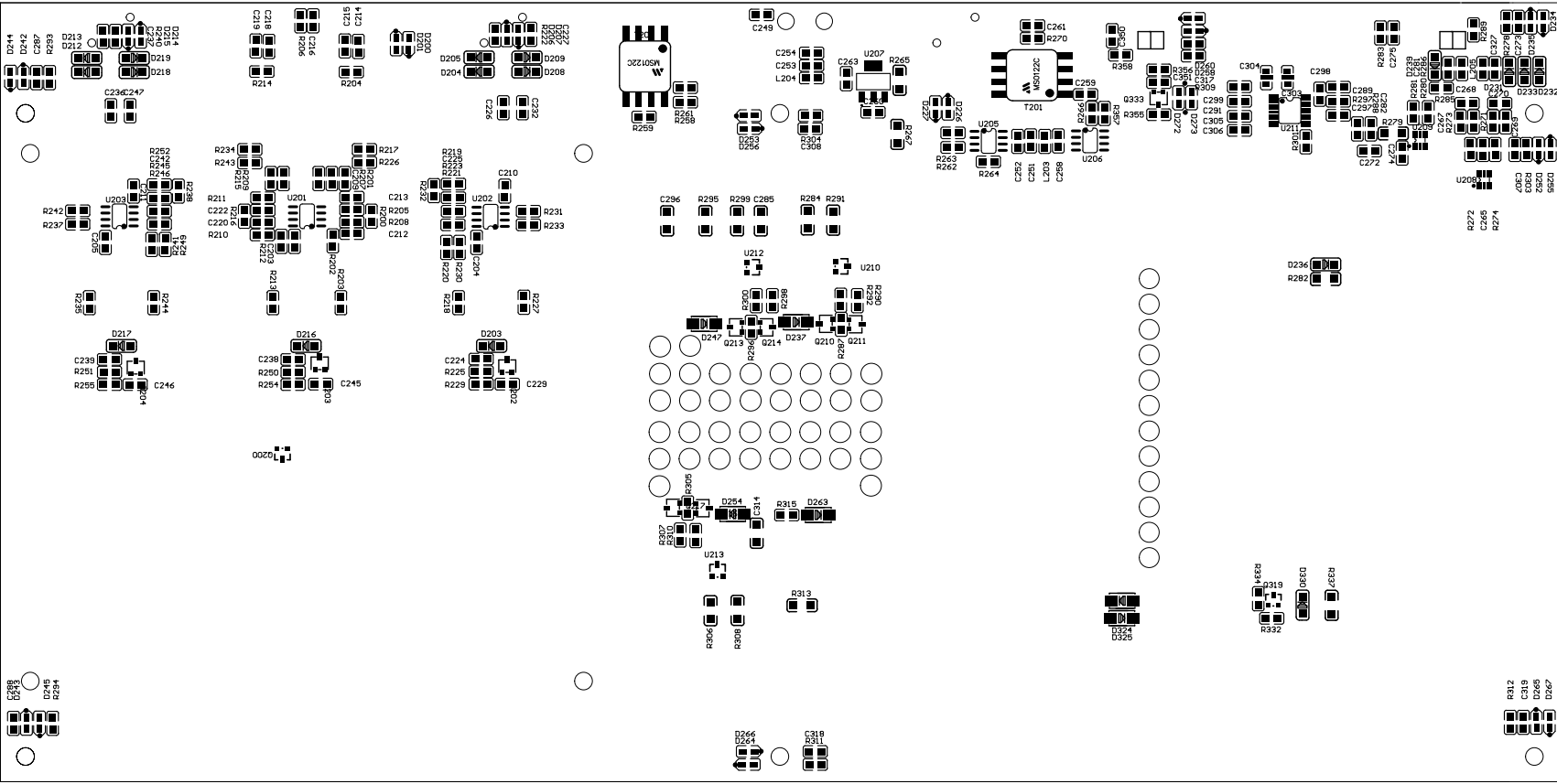


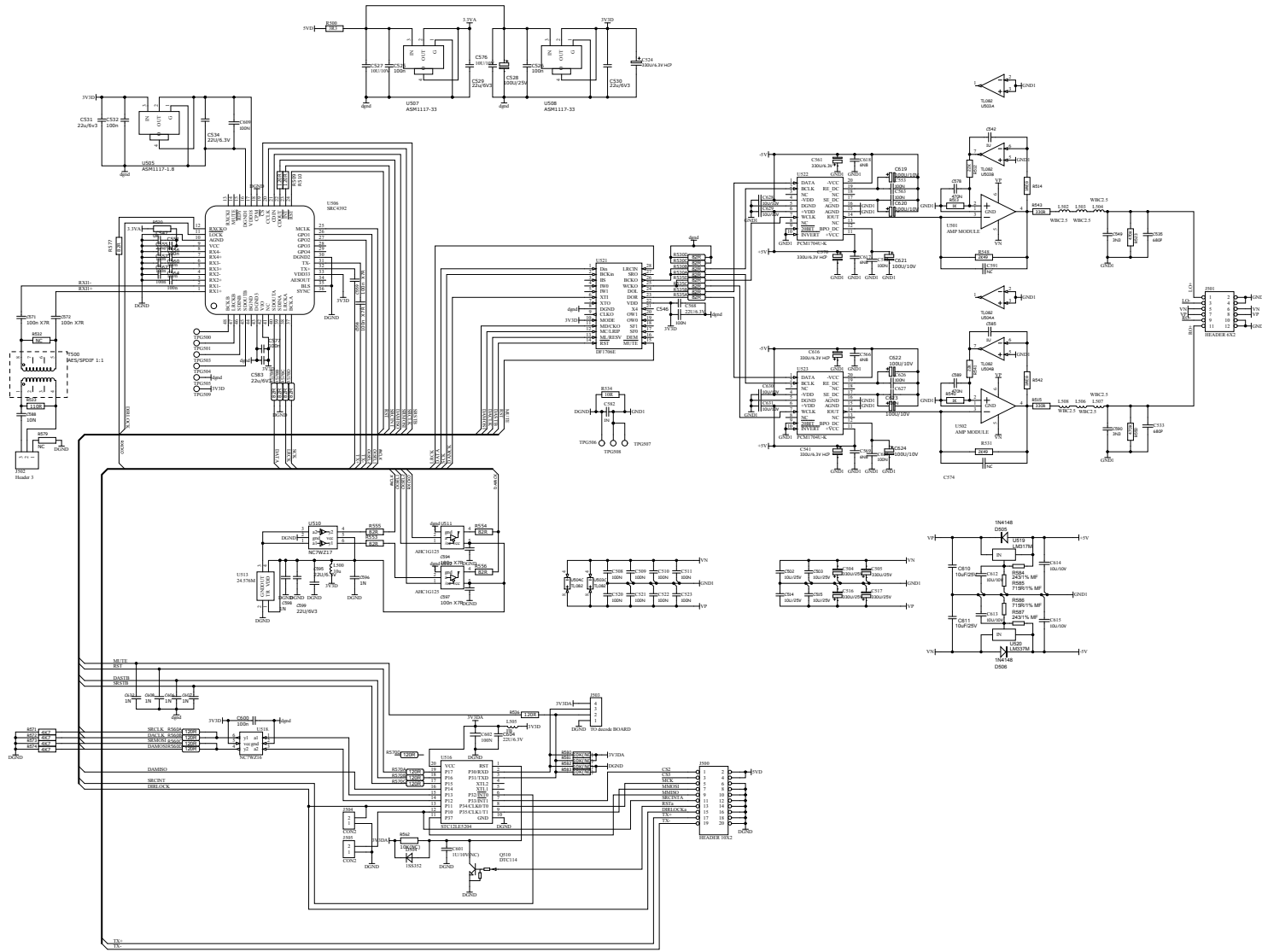


REV.	ECN No.	DESCRIPTION	Date	APPRO.

Hansong (Nanjing) Technology Ltd.
No.HS/OR-RD-25
 THE INFORMATION CONTAINED IN THIS DRAWING IS THE SOLE PROPERTY OF HANSONG ENTERPRISES CO. LTD. ANY REPRODUCTION IN PART OF WHOLE WITHOUT THE WRITTEN PERMISSION OF HANSONG ENTERPRISES CO. LTD. IS PROHIBITED.
 Document Number: HS40-CD32_MAIN VC2-0 SCH Sheet: 1/11
 Project: _____ State: _____
 Drafted by: _____ PL Checked by: _____ Approved by: _____
 Date: _____ Date: _____







REV.	ECN No.	DESCRIPTION	Date	APPRO.

Hansong (Nanjing) Technology Ltd.
No.HS/OR-RD-25

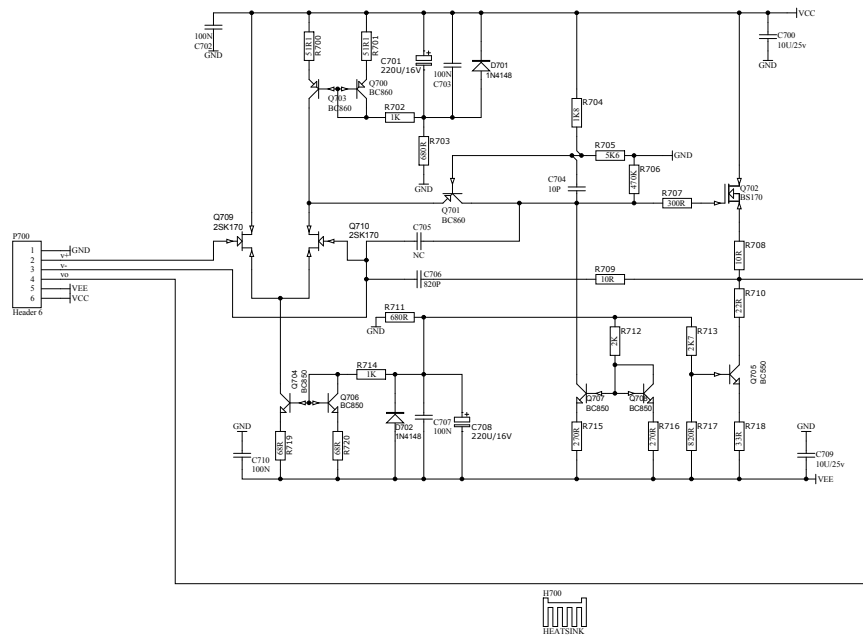
THE INFORMATION CONTAINED IN THIS DRAWING IS THE SOLE PROPERTY OF HANSONG ENTERPRISES CO.LTD. ANY REPRODUCTION IN PART OR WHOLE WITHOUT THE WRITTEN PERMISSION OF HANSONG ENTERPRISES CO.LTD. IS PROHIBITED

Document Number: HS40-132_FPP VC1-0.SCH Sheet: 1/1

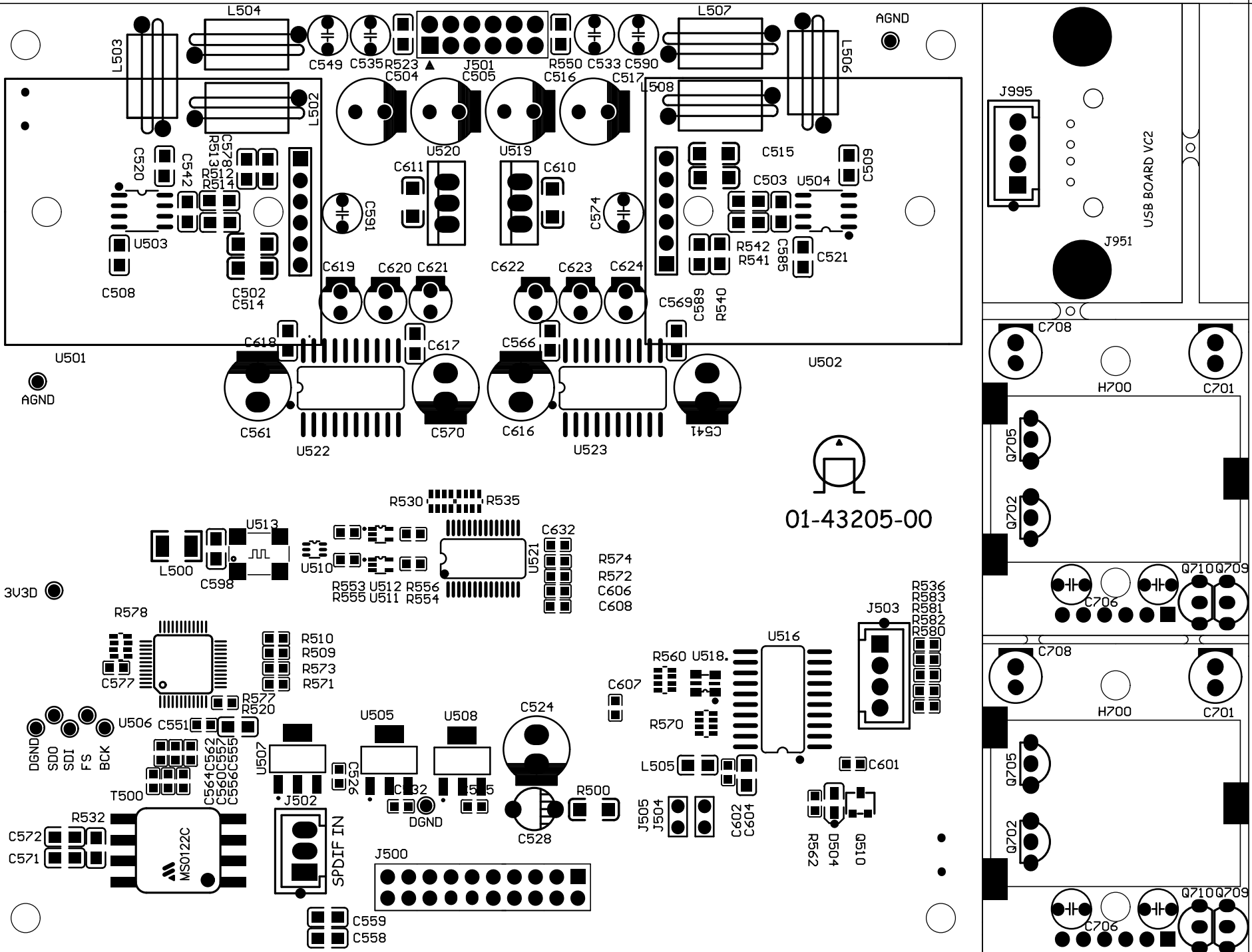
Project: _____ State: _____

Drafted by: _____ PL Checked by: _____ Approved by: _____

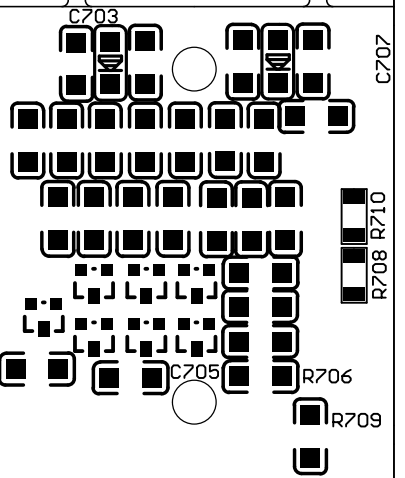
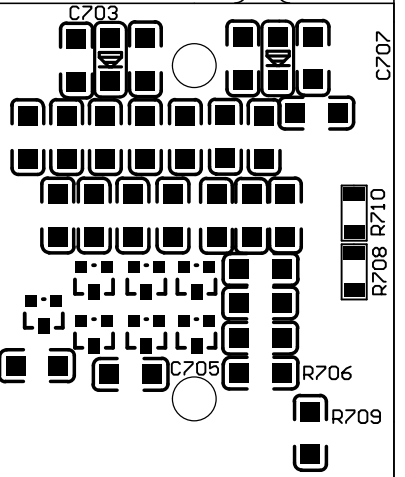
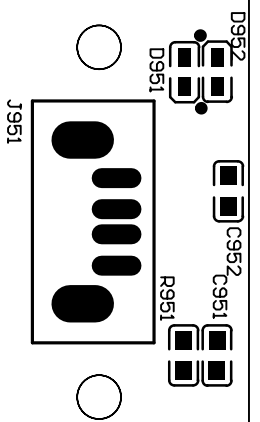
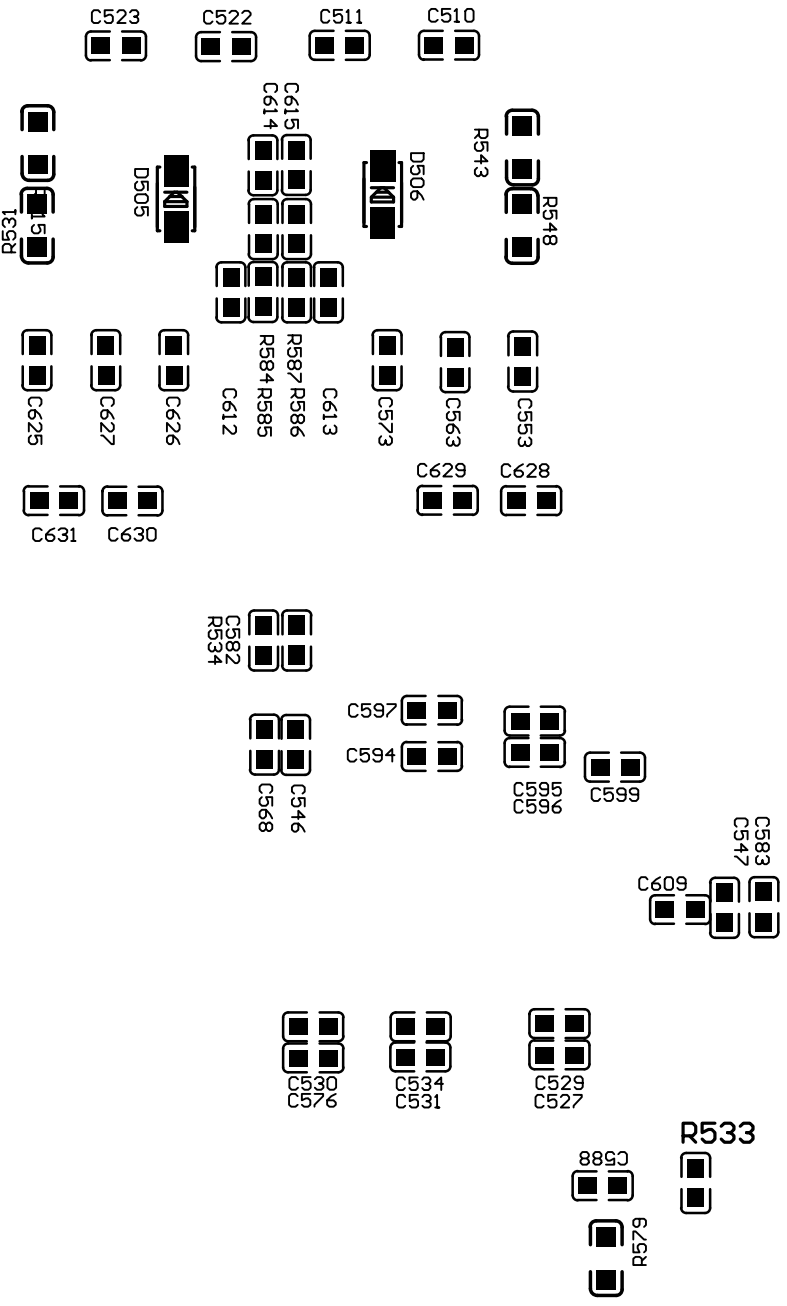
Date: _____ Date: _____

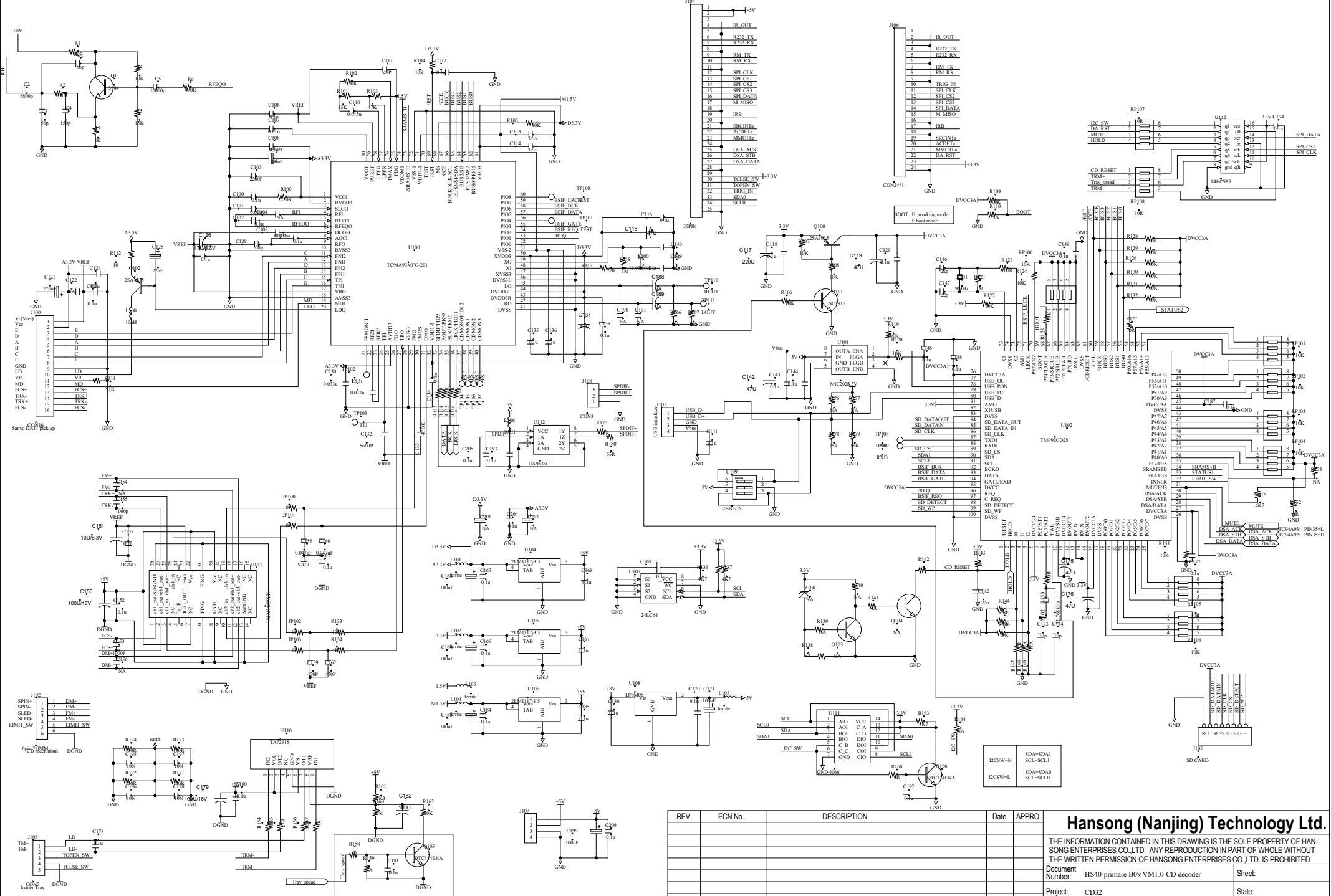


REV.	ECN No.	DESCRIPTION	Date	APPRO.	Hansong (Nanjing) Technology Ltd. No.HS/QR-RD-25	
					Document Number: HS40-I32_FPP VC1-0.SCH	Sheet: 1/1
					Project:	State:
					Drafted by:	PL Checked by:
					Date:	Date:
					Approved by:	Date:



PRIMARE CD32 DAC,MOD,USB VC2





REV.	ECN No.	DESCRIPTION	Date	APPRO.

Hansong (Nanjing) Technology Ltd.

THE INFORMATION CONTAINED IN THIS DRAWING IS THE SOLE PROPERTY OF HANSONG ENTERPRISES CO.,LTD. ANY REPRODUCTION IN PART OF WHOLE WITHOUT THE WRITTEN PERMISSION OF HANSONG ENTERPRISES CO.,LTD. IS PROHIBITED

Document Number: HS40-primare B09 VM1.0-CD decoder Sheet: _____

Project: CD32 State: _____

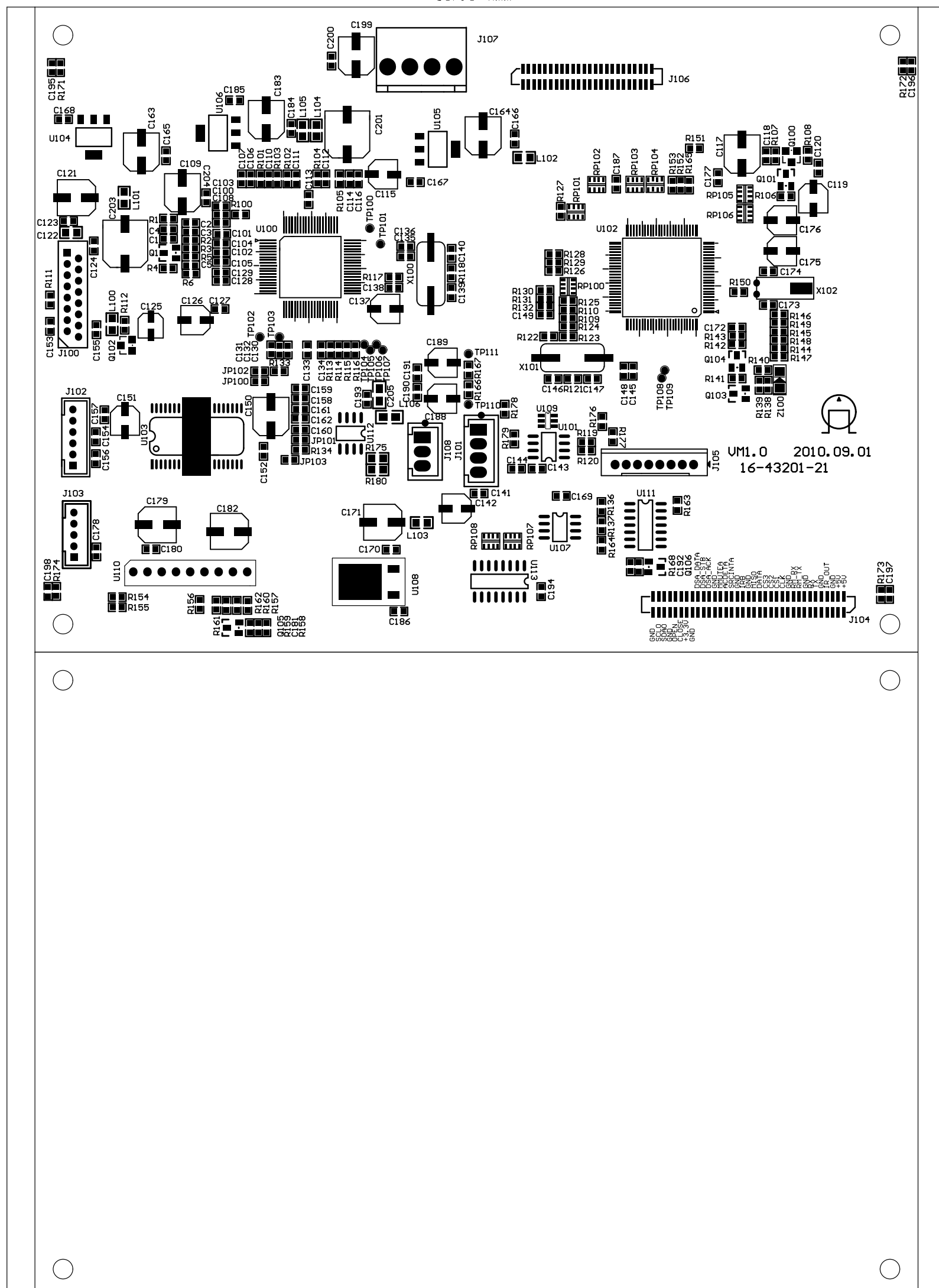
Drafted by: Donny PL Checked by: _____ PTA Checked by: _____ Approved by: _____

Date: 2010.09.01 Date: _____ Date: _____ Date: _____

I2CSW-H	SDA+SDA1	SCL-SCL1
I2CSW-L	SDA-SDA0	SCL-SCL0

167.5 (mm)

230 (mm)



Product specification CD32

Mechanism	Asatech 8210.B01-02, Sanyo SF-P101N
D/A converter	2x PCM1704, DF1706 (digital filter), 24/96 kHz
Analogue outputs	Discrete analogue output stage; 1 pair RCA, 2.1 Vrms; 1 pair XLR, 4.1 Vrms;
Output impedance	RCA 390 Ω ; XLR 47 Ω
Digital outputs	1x SPDif (RCA); 1x AES/EBU (XLR); 1x optical (TOS-link)
Frequency response	20Hz – 20 kHz -0.5dB
Signal to Noise	20Hz – 20kHz unweighted -100dB
THD + N	20Hz – 20kHz <0.01%
Other inputs	USB interface; IR input 3.5mm; RS232; Trigger in/out 3.5mm
Power consumption	Standby 0.5W; Idle 22W; Operation 25W
Dimensions (wxdxh)	430 x 375 x 106 mm
Weight	9 kg
Colour options	Black or Titanium