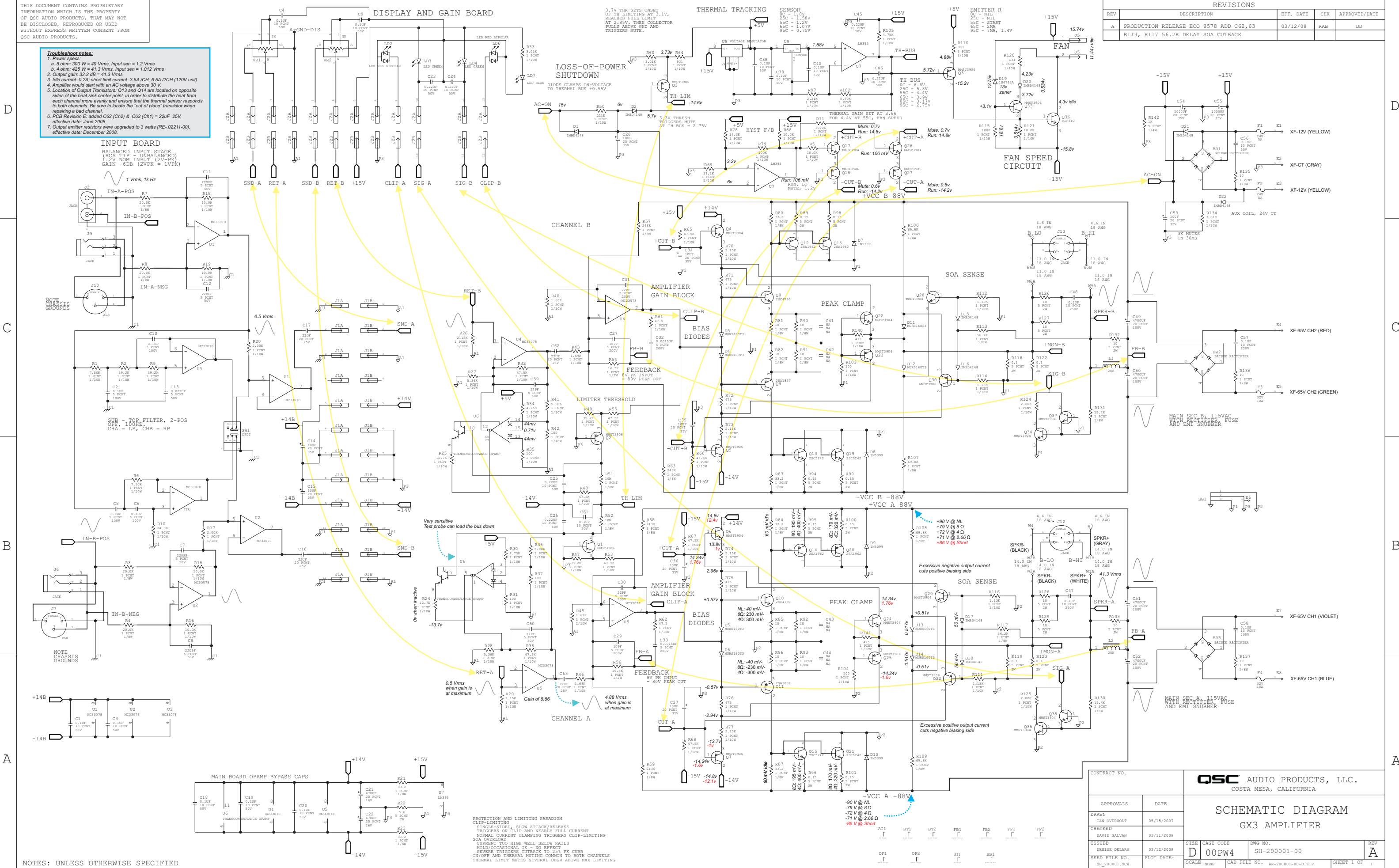


THIS DOCUMENT CONTAINS PROPRIETARY INFORMATION WHICH IS THE PROPERTY OF QSC AUDIO PRODUCTS, THAT MAY NOT BE DISCLOSED, REPRODUCED OR USED WITHOUT EXPRESS WRITTEN CONSENT FROM QSC AUDIO PRODUCTS.

Troubleshoot notes:
 1. Power specs:
 a. 8 ohm: 300W @ 49 Vrms, Input sen = 1.2 Vrms
 b. 4 ohm: 425W @ 41.3 Vrms, Input sen = 1.012 Vrms
 2. Output gain: 32.2 dB @ 41.3 Vrms
 3. Idle current: 0.2A; short limit current: 3.5A CH, 6.5A 2CH (120V unit)
 4. Amplifier would start with an AC voltage above 30 V.
 5. Location of Output Transistors: Q13 and Q14 are located on opposite sides of the heat sink center point. In order to distribute the heat from each channel more evenly and ensure that the thermal sensor responds to both channels. Be sure to locate the "out of place" transistor when repairing a bad channel.
 6. PCB Revision E: added C62 (CH2) & C63 (CH1) = 22uF 25V, effective date: June 2008
 7. Output emitter resistors were upgraded to 3 watts (RE-02211-00), effective date: December 2008.

REVISIONS				
REV	DESCRIPTION	EFF. DATE	CHK	APPROVED/DATE
A	PRODUCTION RELEASE ECO 8578 ADD C62,63 R113, R117 56.2K DELAY SOA CUTBACK	03/12/08	RAB	DD



NOTES: UNLESS OTHERWISE SPECIFIED

PROTECTION AND LIMITING PARADIGM
 CLIP-LIMITING
 SLOW ATTACK/RELEASE
 TRIGGERS ON CLIP AND NEARLY FULL CURRENT
 NORMAL CURRENT CLAMPING TRIGGERS CLIP-LIMITING
 SOA OVERLOAD
 CURRENT TOO HIGH WELL BELOW RAILS
 MILD/OCCASIONAL OK - NO EFFECT
 SEVERE TRIGGERS CUTBACK TO 25% FX CURR
 ON/OFF AND THERMAL MUTING COMMON TO BOTH CHANNELS
 THERMAL LIMIT MUTES SEVERAL DEGR ABOVE MAX LIMITING

APPROVALS		DATE	QSC AUDIO PRODUCTS, LLC. COSTA MESA, CALIFORNIA	
DRAWN	IAN OVERBOLT	05/15/2007	SCHEMATIC DIAGRAM GX3 AMPLIFIER	
CHECKED	DAVID GALVAN	03/11/2008		
ISSUED	DENISE DELARM	03/12/2008	SIZE	CAGE CODE
SEED FILE NO.	SH_200001.SCH	PLOT DATE:	D	00PW4
SCALE		CAD FILE NO.	AR-200001-00-0.RIP	REV
SHEET 1 OF 1		DWG NO. SH-200001-00		