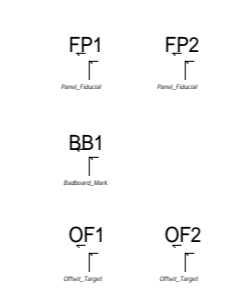
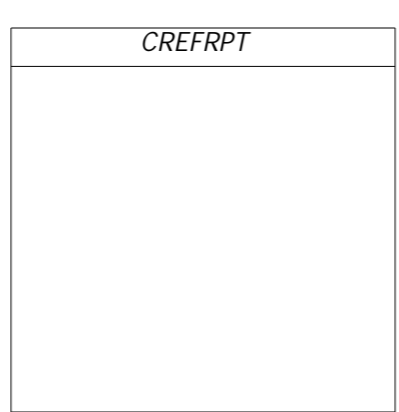
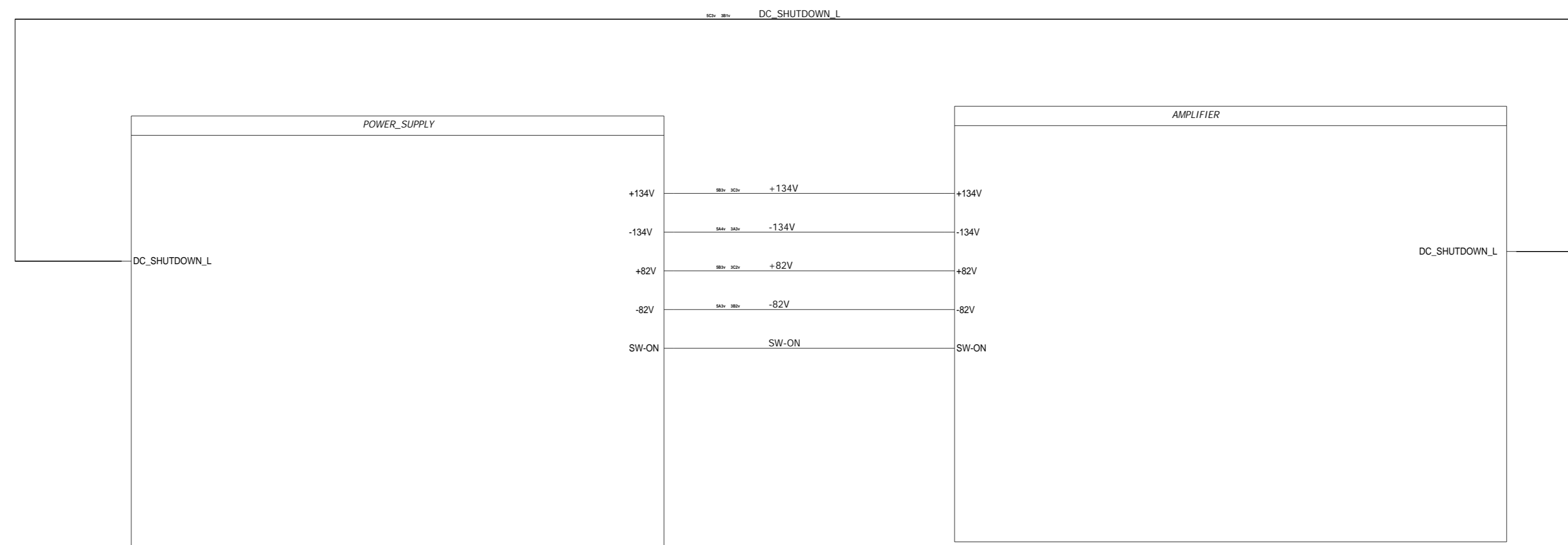


THIS DOCUMENT CONTAINS PROPRIETARY INFORMATION WHICH IS THE PROPERTY OF QSC AUDIO PRODUCTS, THAT MAY NOT BE DISCLOSED, REPRODUCED OR USED WITHOUT EXPRESS WRITTEN CONSENT FROM QSC AUDIO PRODUCTS.

REVISIONS				
REV	DESCRIPTION	EFF. DATE	CHK	APPROVED/DATE
A	PRODUCTION RELEASE W/O CHG PER ECO 10438	12-10-10	RAB	DD
B	REVISED PER ECO 10999	7-21-11		
C	REVISED PER ECO 11625	3-23-12		
D	REVISED PER ECO 10571	6-13-12		

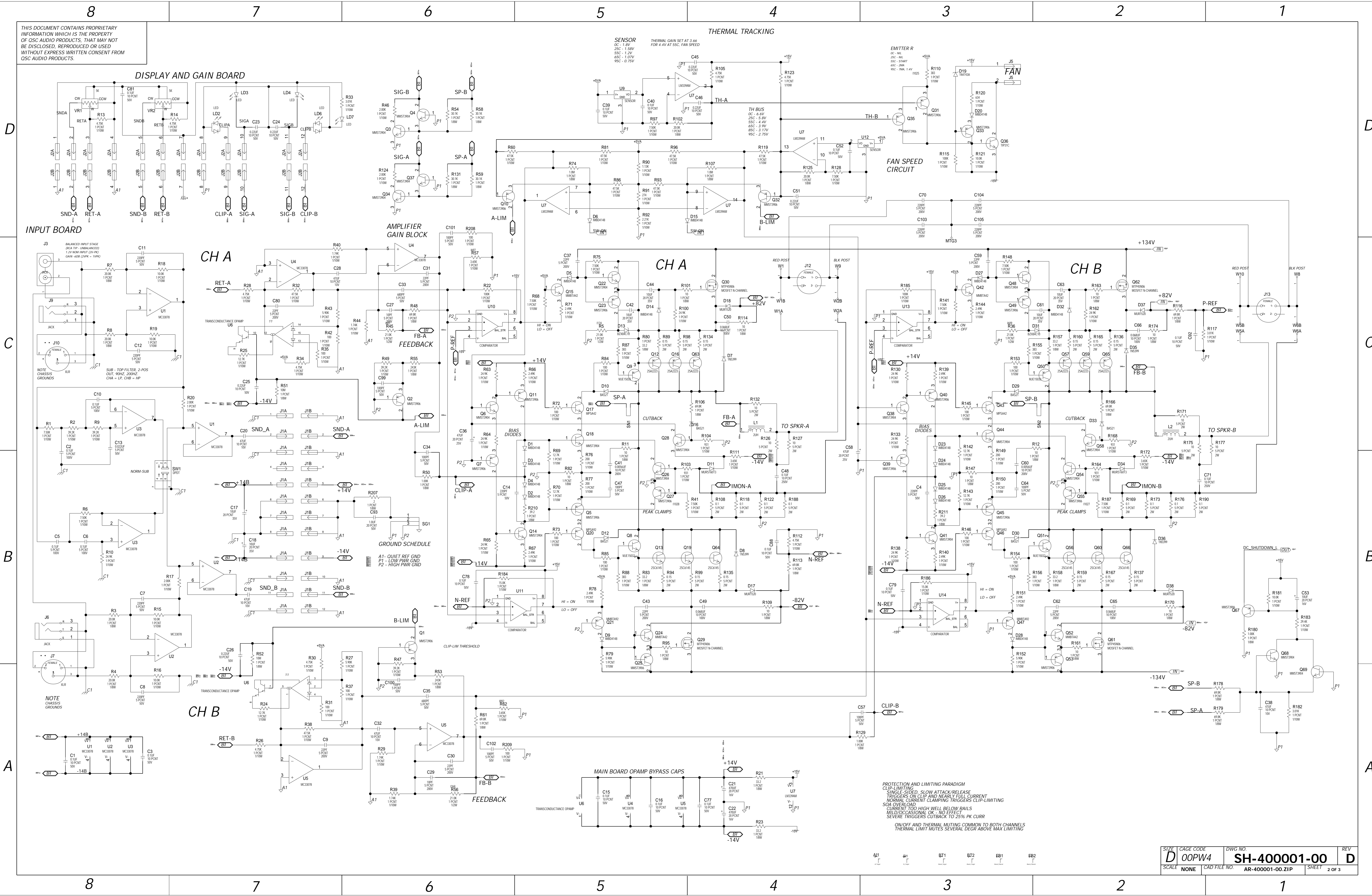


2. COMPONENTS MARKED WITH ARE SAFETY CRITICAL AND MUST BE REPLACED WITH THE EXACT SAME PART
 1. THIS DRAWING USED IN CONJUNCTION WITH ASSEMBLY WP-400001-00.

NOTES: UNLESS OTHERWISE SPECIFIED

CONTRACT NO.		QSC QSC AUDIO PRODUCTS, LLC. 1675 MACARTHUR BOULEVARD COSTA MESA, CA 92626			
APPROVALS	DATE	SCHEMATIC DIAGRAM GX7			
DRAWN Matt Skogmo	10-28-2009				
CHECKED D. GAVAN	12-8-10				
ISSUED DENISE D	12-10-10	SIZE D	CAGE CODE 00PW4	DWG NO. SH-400001-00	REV D
SEED FILE NO. SUBVERSION	PLOT DATE:	SCALE NONE	CAD FILE NO. AR-400001-00.ZIP	SHEET 1 OF 3	

THIS DOCUMENT CONTAINS PROPRIETARY INFORMATION WHICH IS THE PROPERTY OF OSC AUDIO PRODUCTS. THAT MAY NOT BE DISCLOSED, REPRODUCED OR USED WITHOUT EXPRESS WRITTEN CONSENT FROM OSC AUDIO PRODUCTS.



PROTECTION AND LIMITING PARADIGM
 CLIP-LIMITING: SINGLE-SIDED, SLOW ATTACK/RELEASE
 TRIGGERS ON CLIP AND NEARLY FULL CURRENT
 NORMAL CURRENT CLAMPING TRIGGERS CLIP-LIMITING
 SOA OVERLOAD: CURRENT TOO HIGH WELL BELOW RAILS
 MILD/OCCASIONAL OK - NO EFFECT
 SEVERE TRIGGERS CUTBACK TO 25% PK CURR
 ON/OFF AND THERMAL MUTING COMMON TO BOTH CHANNELS
 THERMAL LIMIT MUTES SEVERAL DEGR ABOVE MAX LIMITING

THIS DOCUMENT CONTAINS PROPRIETARY INFORMATION WHICH IS THE PROPERTY OF OSC AUDIO PRODUCTS. THAT MAY NOT BE DISCLOSED, REPRODUCED OR USED WITHOUT EXPRESS WRITTEN CONSENT FROM OSC AUDIO PRODUCTS.

D

C

B

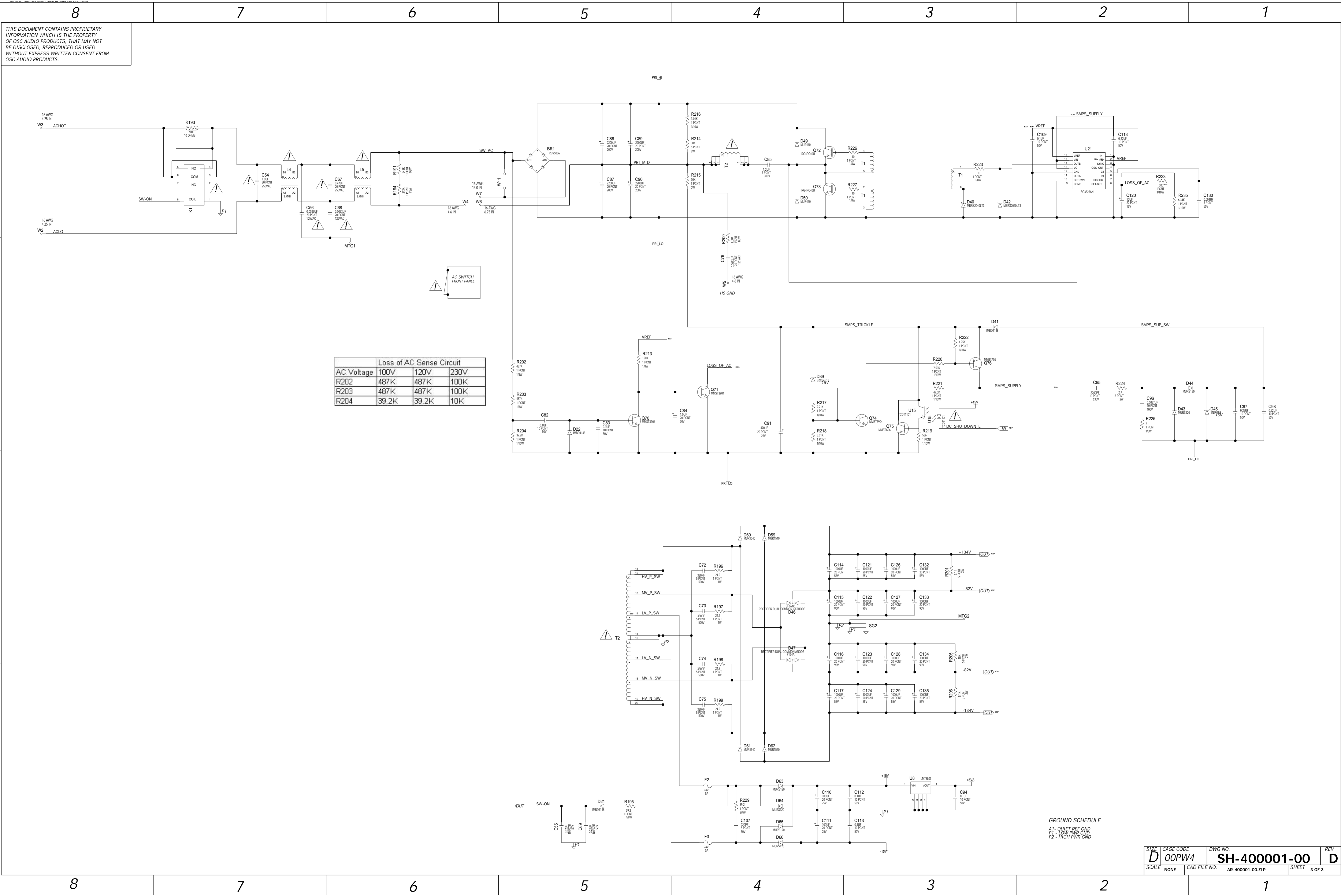
A

D

C

B

A



	Loss of AC Sense Circuit		
AC Voltage	100V	120V	230V
R202	487K	487K	100K
R203	487K	487K	100K
R204	39.2K	39.2K	10K

GROUND SCHEDULE
 A1- QUIET REF GND
 P1 - LOW PWR GND
 P2 - HIGH PWR GND