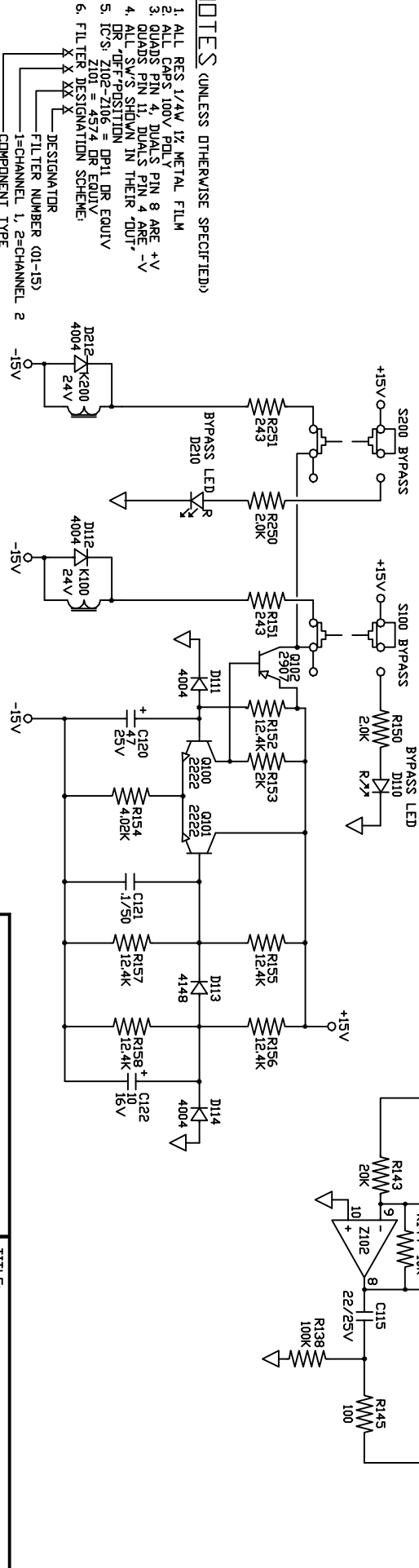


POWER-UP/BYPASS RELAY



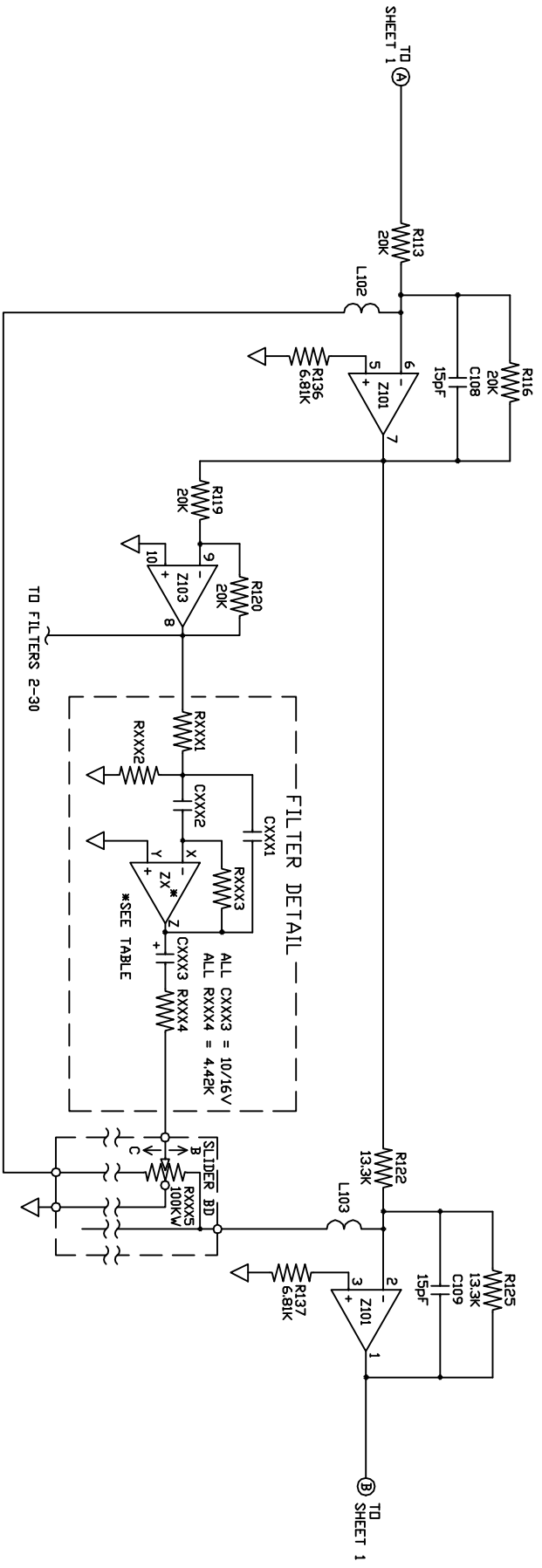
NOTES (UNLESS OTHERWISE SPECIFIED)

1. ALL RES 1/4W 1% METAL FILM
2. ALL CAPS 100V POLY
3. QUADS PIN 4, DUALS PIN 8 ARE +V
4. QUADS PIN 11, DUALS PIN 4 ARE -V
5. ALL SW'S SHOWN IN THEIR 'DUT'
6. DR 'UP'-POSITION = DP1 DR EQUIV
7. ICS: Z102-Z106 = DR EQUIV
8. FILTER DESIGNATION SCHEME:

DESIGNATOR  
 FILTER NUMBER (01-15)  
 1=CHANNEL 1, 2=CHANNEL 2  
 COMPONENT TYPE

EXAMPLE: C1072  
 CAPACITOR, CHANNEL 1, FILTER 07 (100HZ), NUMBER 2

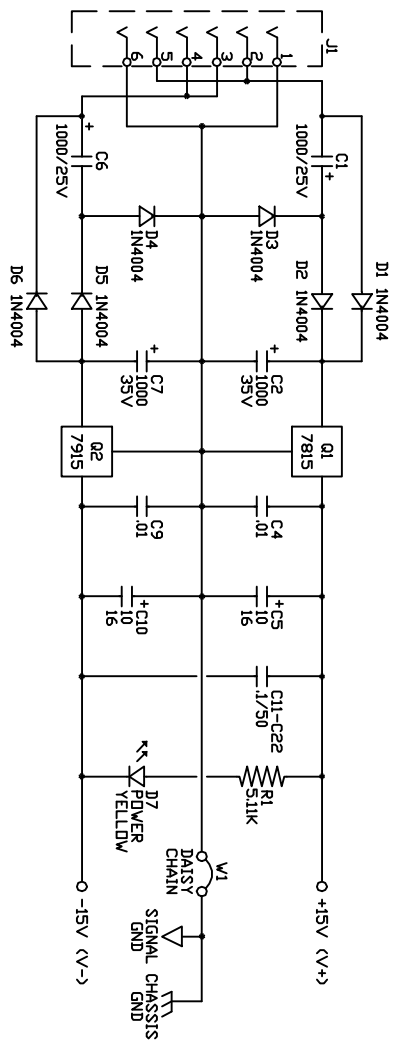
ACTION: SCHEM NOT CHANGED, NEW DOC #		REVISION: RWJ		APPROVED: SKH		DATE: 20JAN98	
DRAWN: AC	DATE: 3APR95	CHECKED:	DATE:	SHEET: 1 OF 2	DD NOT SCALE DRAWING		
TITLE: I/O SCHEM				DOC. NO: 101434			
Corp. 10802 47th Avenue West, Mukilteo				VA 98275-5098 (425) 355-6000			



ZX CONNECTION TABLE

FILTER FREQ	ZX*	X	Y	Z
1	25 ZX03	13	12	14
2	40 ZX03	2	3	1
3	63 ZX03	6	5	7
4	100 ZX04	13	12	14
5	160 ZX04	9	10	8
6	250 ZX04	2	3	1
7	400 ZX04	6	5	7
8	630 ZX05	13	12	14
9	1k ZX05	9	10	8
10	1.6k ZX05	2	3	1
11	2.5k ZX05	6	5	7
12	4k ZX06	13	12	14
13	6.3k ZX06	9	10	8
14	10k ZX06	2	3	1
15	16k ZX06	6	5	7

\*CH1-X=1  
CH2-X=2



ACTION: SCHEM NOT CHANGED, NEW DDC # DRAWN: AC      DATE: 03APR95      CHECKED:	REVISED: RWJ      APPROVED: SKH      DATE: 20JAN98 SHEET: 2 OF 2      DDC NOT SCALE DRAWING	<p>Corp. 10802 47th Avenue West, Mukilteo VA 98275-5098 (425) 355-6000</p>
		TITLE: EQ/PWR SCHEM GE215 DDC. NO. 101434