

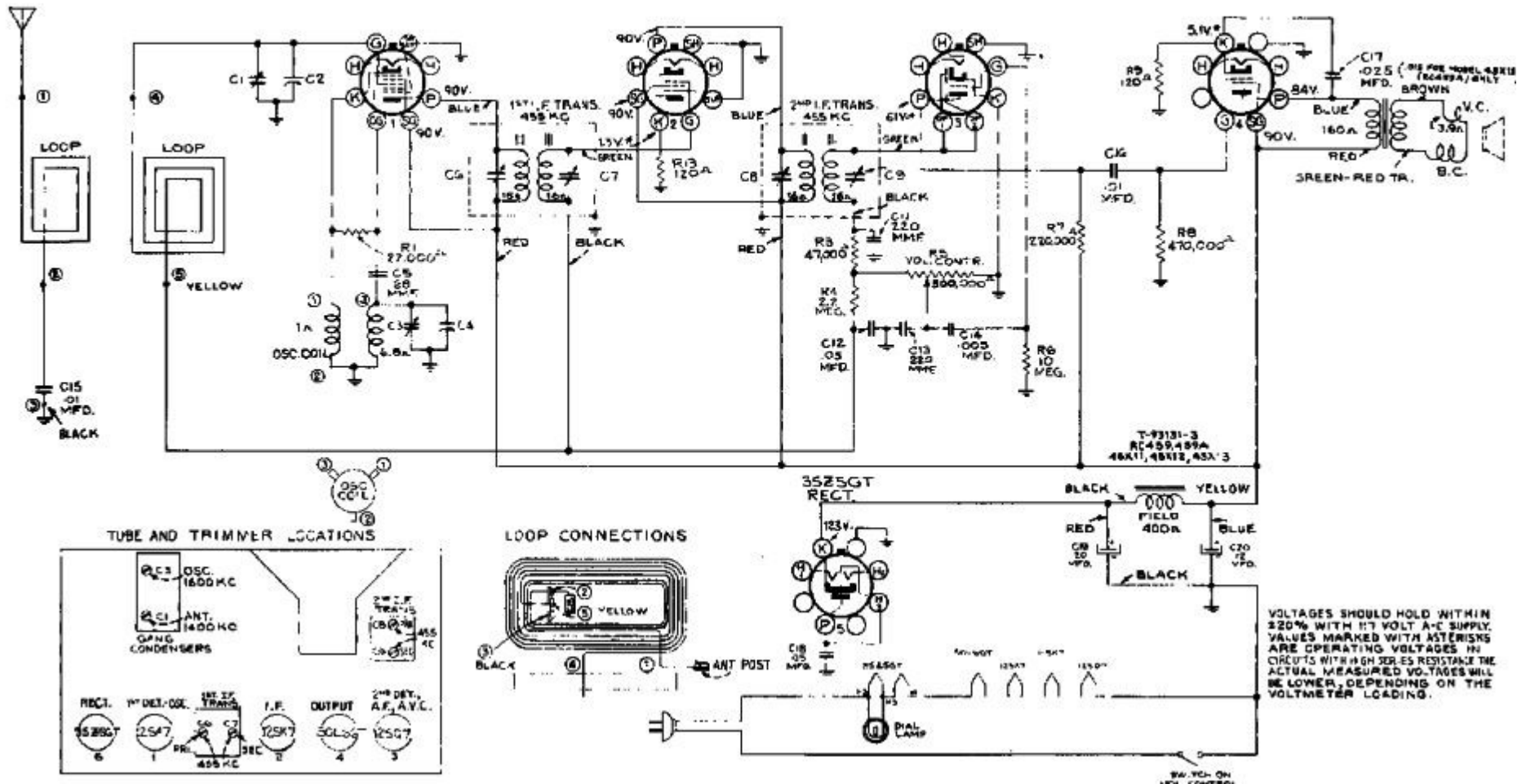
12SA7
1st DET. OSC.

12SK7
I.F.

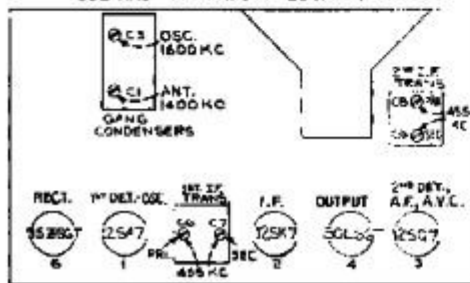
BOTTOM VIEW
OF
TUBE SOCKETS

12SQ7
2nd DET.-AF.-AVG.

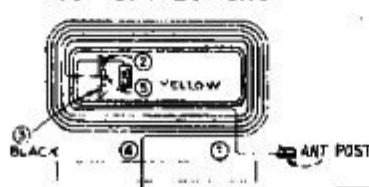
50L6GT
OUTPUT



TUBE AND TRIMMER LOCATIONS



LOOP CONNECTIONS



VOLTAGES SHOULD HOLD WITHIN ±20% WITH 117 VOLT A-C SUPPLY. VALUES MARKED WITH ASTERISKS ARE OPERATING VOLTAGES IN CIRCUITS WITH HIGH SERIES RESISTANCE. THE ACTUAL MEASURED VOLTAGES WILL BE LOWER, DEPENDING ON THE VOLTMETER LOADING.