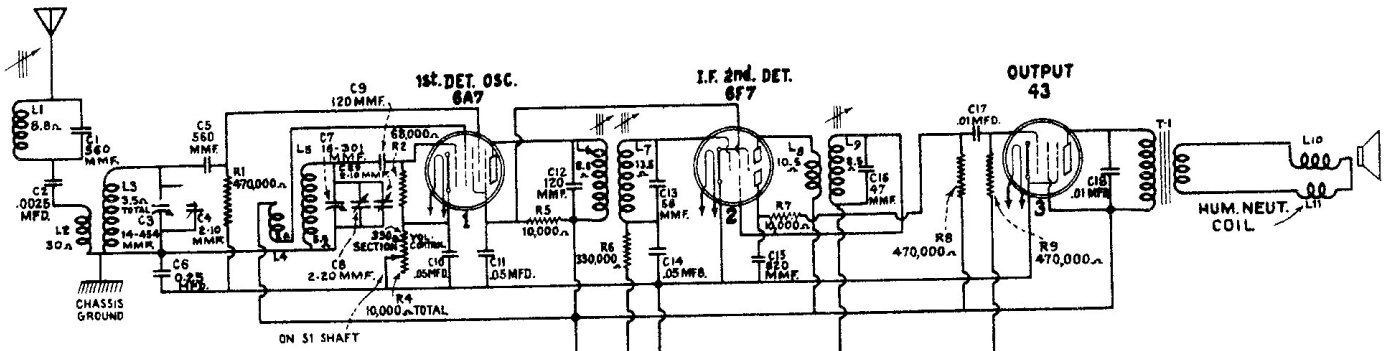
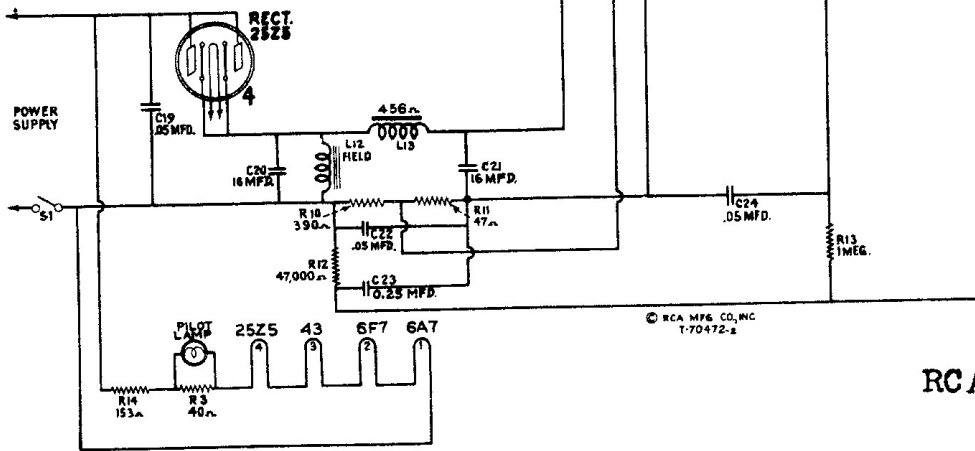


MANUAL OF MOST-OFTEN-NEEDED RADIO DIAGRAMS



I.F. 460 KC.

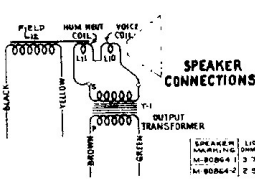
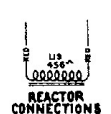
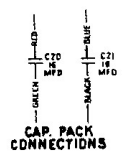
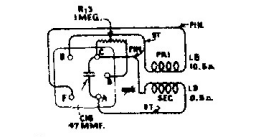
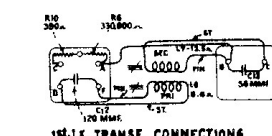
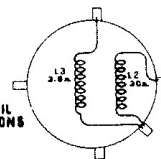
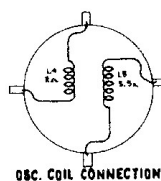
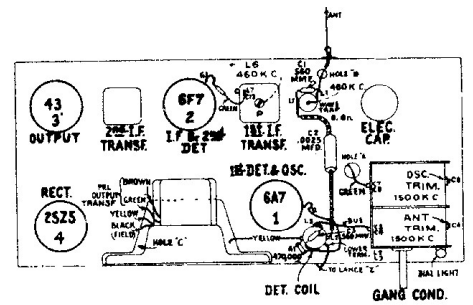
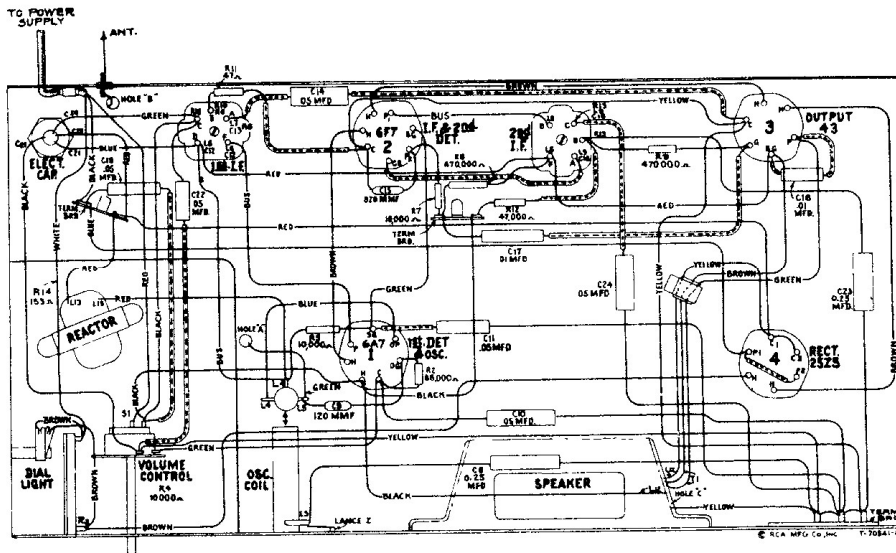


SERVICE HINTS

- (1) Excessive hum or distortion is sometimes caused by pilot lamp socket short-circuiting to chassis.

RCA Models: 4X, 4X3, 4X4

Schematic Circuit Diagram



156

Chassis Wiring Diagram, Radiotron, Coil, and Trimmer Locations

COMPILED BY M. N. BEITMAN, SUPREME PUBLICATIONS