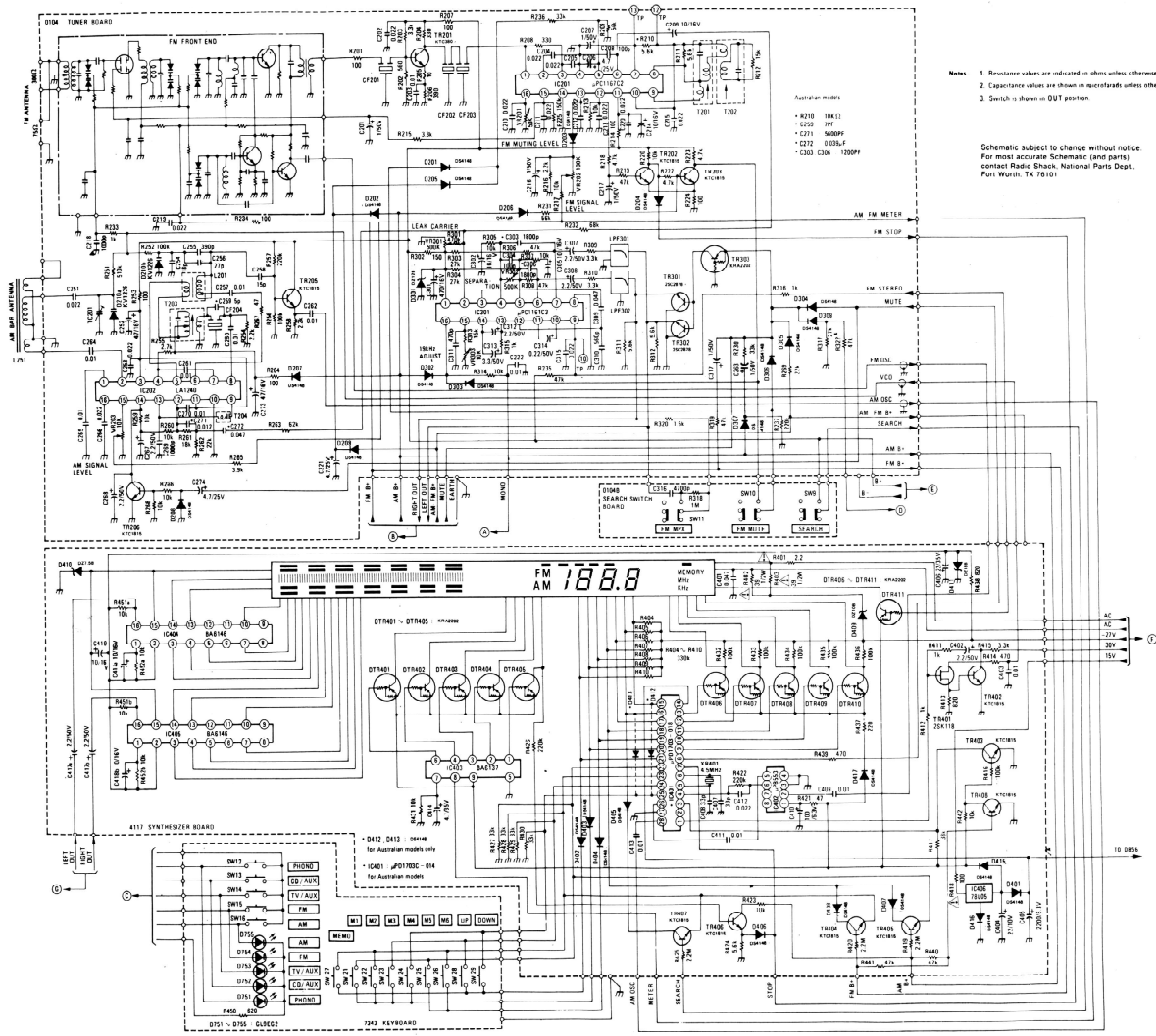


# SCHEMATIC DIAGRAM (Tuner Section)

Cat. No. 31-3015A

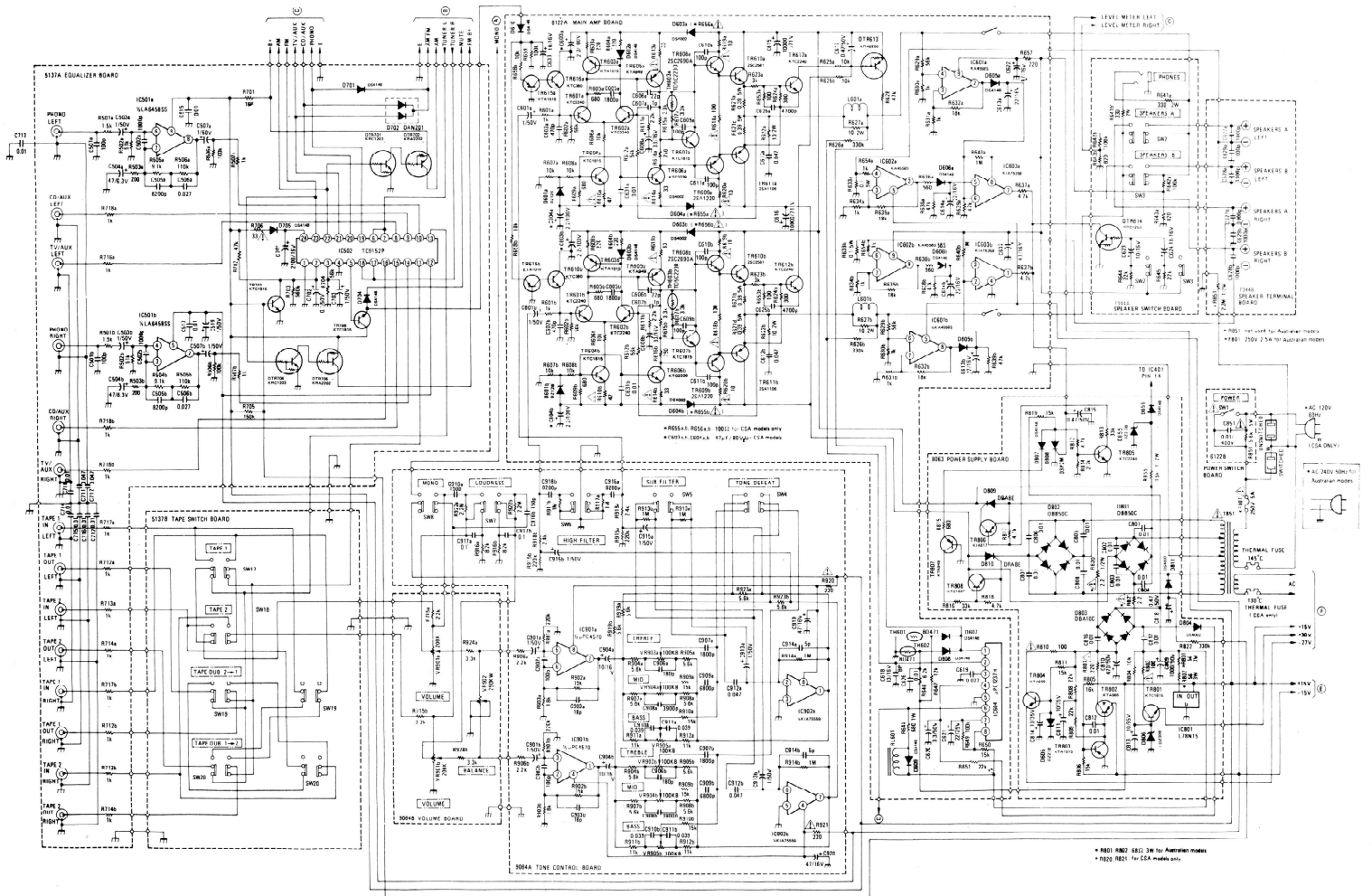


- Notes:
1. Resistance values are indicated in ohms unless otherwise specified (K=1,000 M=1,000,000)
  2. Capacitance values are shown in microfarads unless otherwise noted (P=picofarads)
  3. Switch is shown in DUT position.

Schematic subject to change without notice.  
For most accurate Schematic (and parts)  
contact Radio Shack, National Parts Dept.,  
Fort Worth, TX 76101

# SCHEMATIC DIAGRAM (Audio Section)

Cat. No. 31-3015A



Notes:  
 1. Resistor values are indicated in ohms unless otherwise specified (K=1,000, M=1,000,000).  
 2. Capacitor values are shown in microfarads unless otherwise noted (P=pico-farads).  
 3. Switch is shown in OUT position.

Schematic subject to change without notice.  
 For most accurate Schematic (and parts)  
 contact Radio Shack, National Parts Dept.,  
 Fort Worth, TX 76101