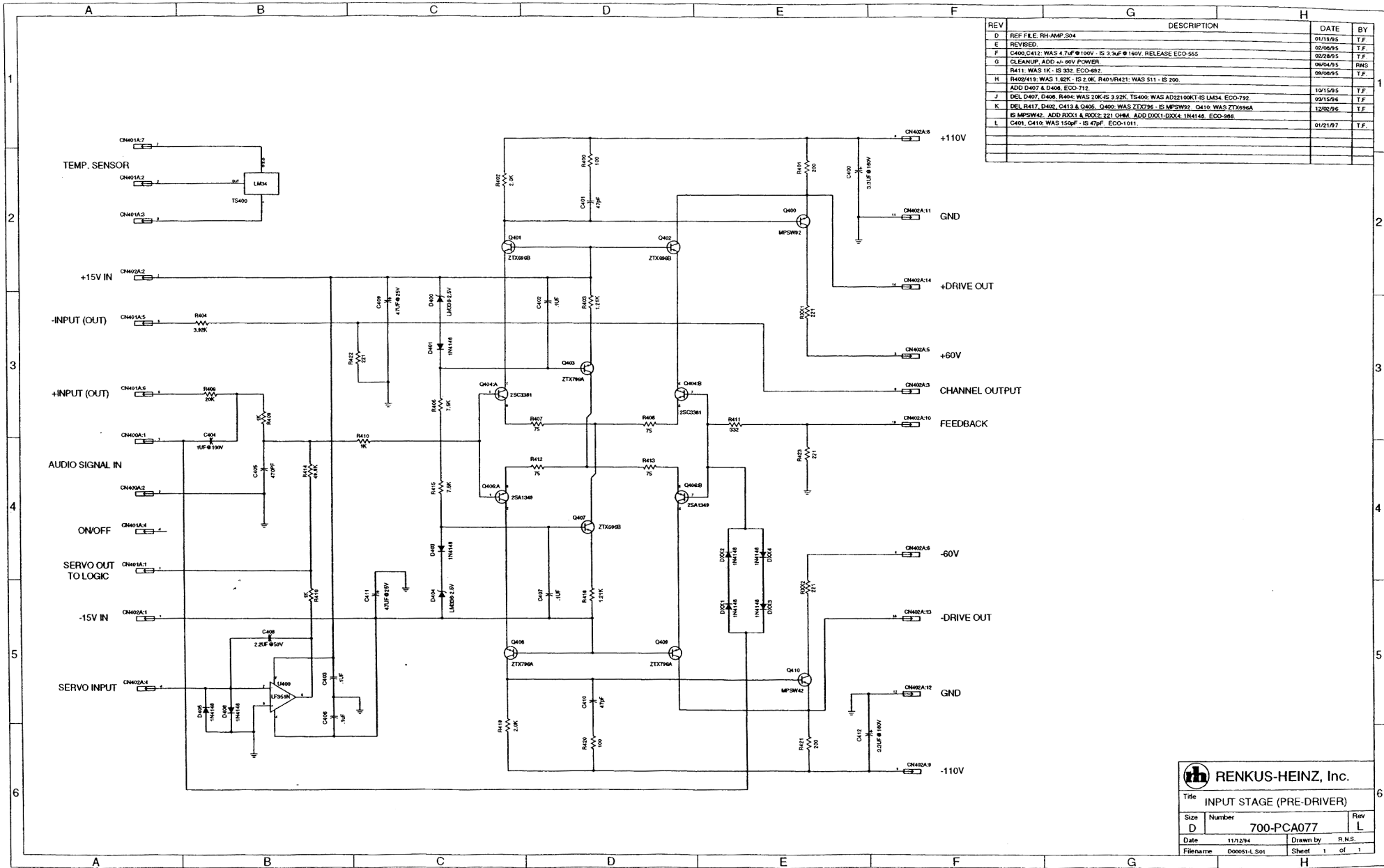


Title: **RH-AMP INPUT MOD.**

Size: **D** Number: **700-PCA082** Rev: **F**

Date: 12/28/94 Drawn by: F.O.

Filename: 000057-F.501 Sheet: 1 of 2

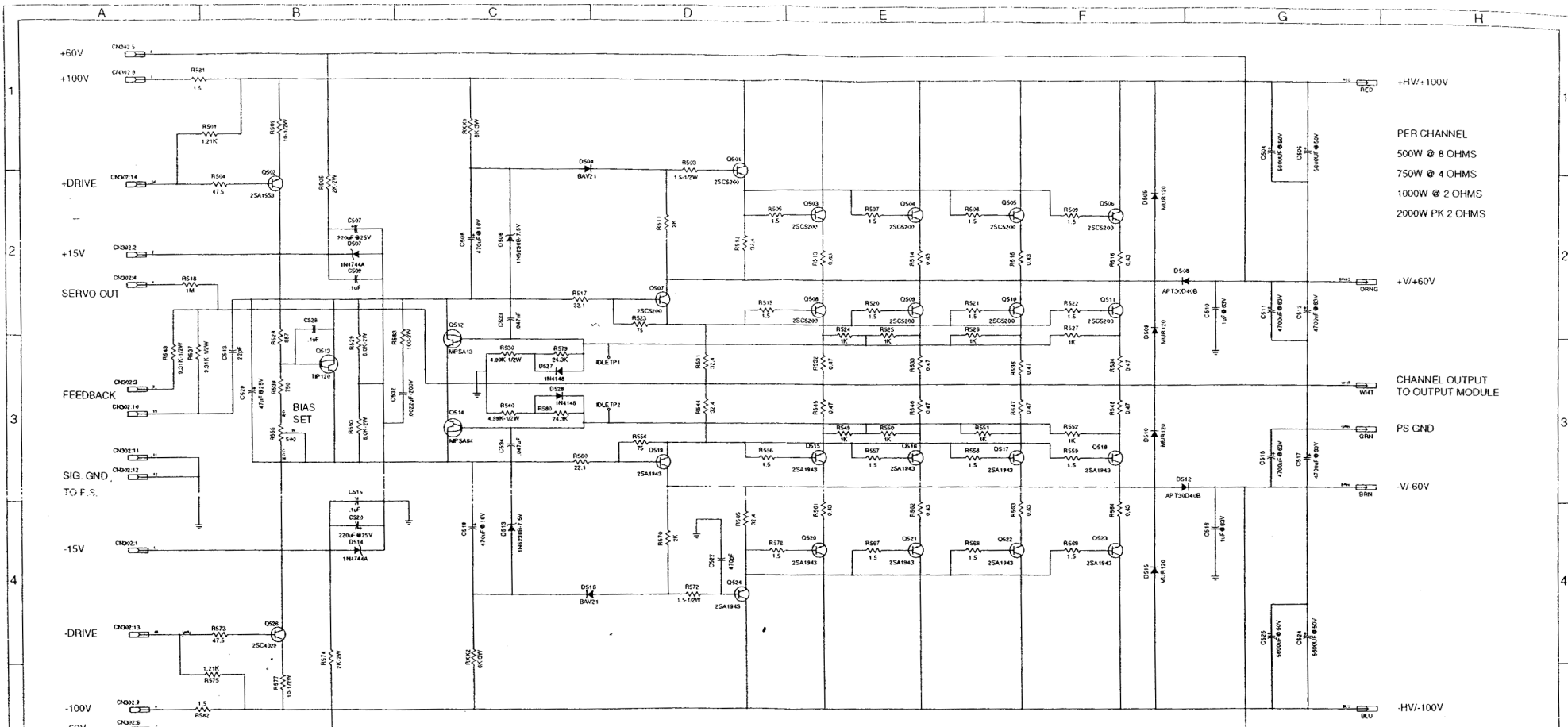


REV	DESCRIPTION	DATE	BY
D	REF FILE, RH-AMP.S04	01/19/95	T.F.
E	REVISED	02/06/95	T.F.
F	C400, C412: WAS 4.7UF @ 100V - IS 3.3UF @ 160V, RELEASE ECO-555	02/06/95	T.F.
G	CLEANUP, ADD +/- 60V POWER	06/04/95	RHS
R411	WAS 1K - IS 302 ECO-692	08/08/95	T.F.
H	R403A19: WAS 1.02K - IS 2.0K, R401/R421: WAS 511 - IS 200	10/15/95	T.F.
J	DEL D407, D408, R404: WAS 20K-IS 3.32K, TS400: WAS AD22100KT-IS LM34, ECO-792	02/15/96	T.F.
K	DEL R417, D402, C413 & Q405, Q400: WAS ZTX796 - IS MPS3W92, Q410: WAS ZTX696A	12/02/96	T.F.
L	IS MPS3W42: ADD R3X1 & R3X2: 221 OHM, ADD D3X1-D3X4: 1N4148, ECO-986		
	C401, C410: WAS 150UF - IS 47UF, ECO-1041	01/21/97	T.F.

RENKUS-HEINZ, Inc.

Title: INPUT STAGE (PRE-DRIVER)

Size	D	Number	700-PCA077	Rev	L
Date	11/7/94	Drawn by	R.N.S.	Sheet	1 of 1
Filename	D00651-L.S01				



PER CHANNEL
 500W @ 8 OHMS
 750W @ 4 OHMS
 1000W @ 2 OHMS
 2000W PK 2 OHMS

+HV/+100V
 +V/+60V
 CHANNEL OUTPUT TO OUTPUT MODULE
 PS GND
 -V/-60V

NOTES:
 1. PCB P/N 722-PCB0038.

REV	DESCRIPTION	DATE	BY
D	REF. FILE: RH AMP 506	01/23/95	T.F.
E	REVISED	01/21/95	T.F.
F	C500 & C527 WAS 1uF @ 100V - IS 4.7uF @ 100V. R501 NOW 220uH IND.	02/22/95	T.F.
G	ADD TWO 1N4004 PARALLEL 1W/200V IND. C500, C527 WAS 4.7uF @ 100V - IS 3.3uF @ 160V	03/01/95	T.F.
H	D501, D516 WAS 1N5819 - IS 1N4004. CLEANUP. RELEASE ECO-555.	06/06/95	T.F.
I	SEE ECO-480 FOR LIST OF CHANGES.	06/06/95	T.F.
J	DELETE D521 - D526. R530 & R540 WAS 7.32K - IS 4.99K (1200W/7.32K). ECO-708	10/05/95	T.F.
K	ADD C533, C534 - 0.47uF. REMOVE 150C TEMP SPEC. FROM 5600uF CAPS. ECO-720	10/19/95	T.F.
L	R543 WAS 221-1uW - IS 9.31K-1/2W WLSLD. MOVED R543 FROM BETWEEN CH502-10 & CH502-11 TO BETWEEN CH502-2 & COMMON POINT OF R518/R520. DELETE ALL REFERENCE FROM TITLE AND NOTES TO 1200W PCB, 700-PCA076. ECO-746	03/06/96	T.F.
M	ELIMINATE +/-105V RAILS. DELETE CH501. ECO-911	06/23/96	T.F.
N	R504, R573 WAS 22.1 - IS 47.5. DEL C500, C525, R500, R510, R571, R576, C501, C576, C501, C526, D502, D503, D517, D518. ADD 800W RES - 2 PL. BETWEEN DIODE CATHODE AND +/-100V. AND BETWEEN D518 ANODE AND +/-100V. ECO-985.	11/28/96	T.F.
O	R579 & R580 WAS 15.8K - IS 24.3K. ECO-995	1/27/98	T.F.
P	C513 WAS 100uF - IS 22uF. R529, R550 WAS 3K/2W - IS 8K/2W. R563 WAS 100W - IS 100W/2W. C532 WAS 0.047/100V - IS 0.022/100V. R511, R570 WAS 475 - IS 2K. R509, R572 WAS 100-1/4W - IS 1.5-1/2W. DEL C500, C507, C503, C523, C527, R532. ECO-1019.	01/21/97	T.F.
R	25C5200 WAS 25C3281. 25A1943 WAS 25A1307. ECO #4305.	12/10/01	GL

RENKUS-HEINZ, Inc.

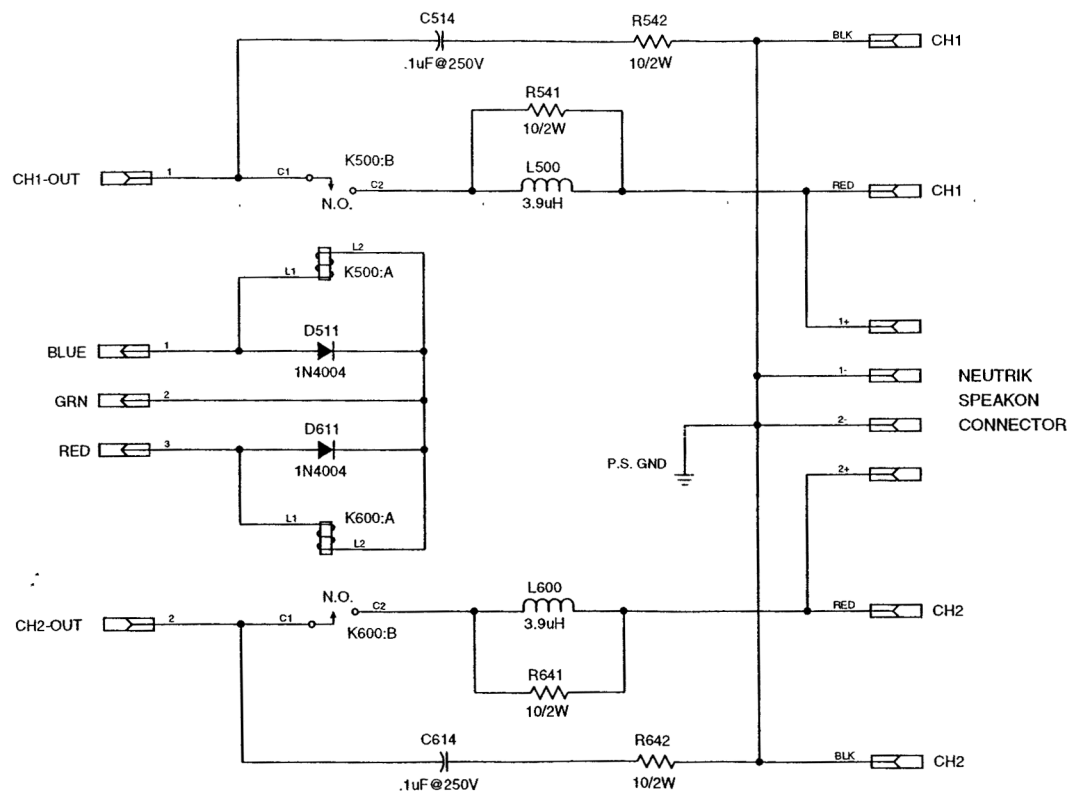
Title: OUTPUT STAGE, CHANNEL PCB, AMPLIFIER, 1500W

Size: Number 700-PCA069 Rev R

Date: 11-14-94 Drawn by: R.N.S.

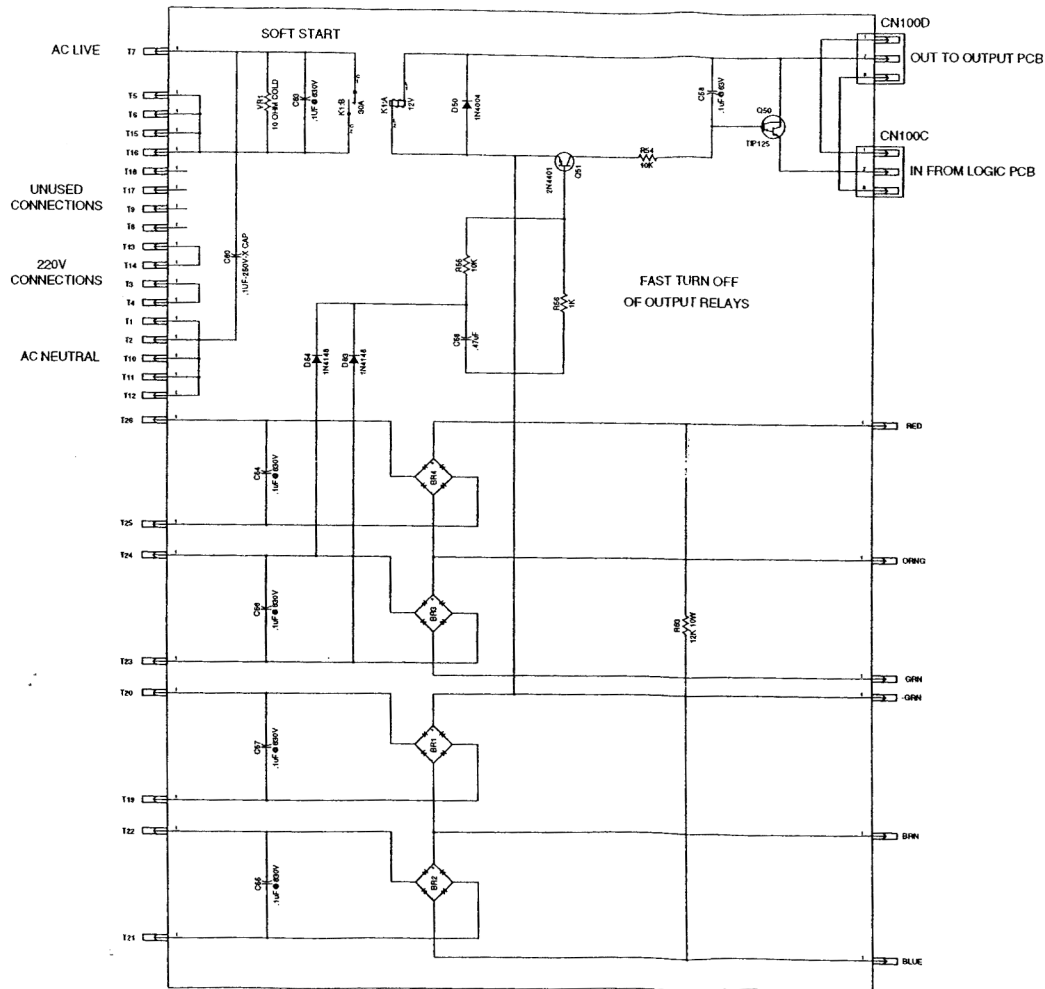
Filename: D00050-R 501 Sheet 1 of 1

REV	DESCRIPTION	DATE	BY
D	RELEASE - ECO-555. REF. FILE: RH-AMP.S07	01/23/96	T.F.
E	ADD WIRE/COLOR PLACEMENT TO RELAY INPUTS. ECO-655.	07/11/96	T.F.
F	CHANGE H.F. SNUBBER CIRCUIT FROM POST-RELAY TO PRE-RELAY. REDRAW SCHEMATIC FOR CLARITY AND TO MATCH PCB0040/REV G. ECO-745.	03/29/96	T.F.



RENKUS-HEINZ, Inc.			
Title AMP OUTPUT MODULE			
Size B	Number 700-PCA078	Rev F	
Date 11-13-94	Drawn by R.S.		
Filename D00052-F.S01	Sheet 1 of 1		

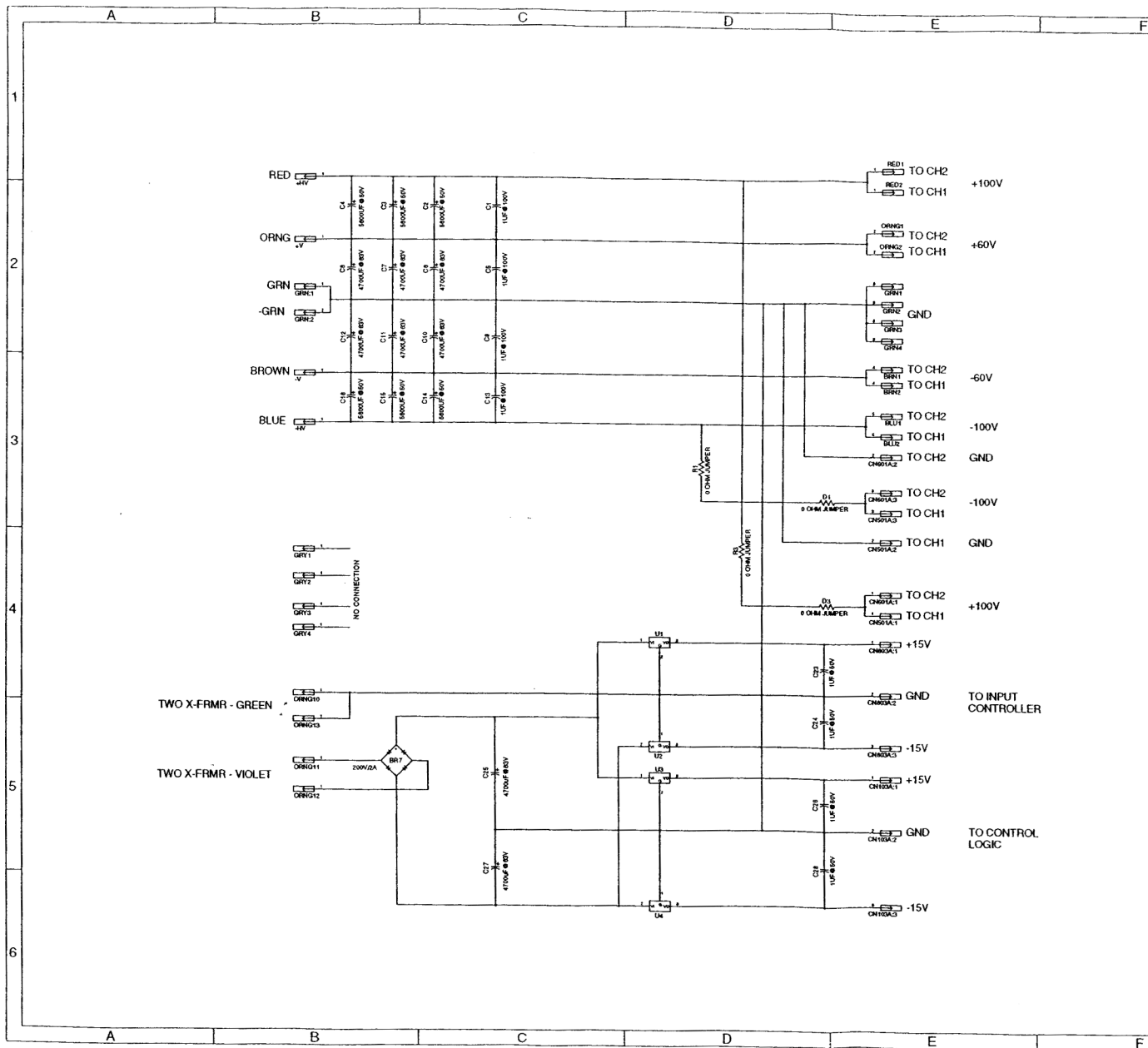
REV	DESCRIPTION	DATE	BY
D	NOTE: REF FILE: RH-AMP 506	01/19/95	T.F.
E	RELEASE: ECO-555	02/07/95	T.F.
F	ADD LOCATION C52: 1uF - (REF: PCB ECO426) ECO-651		
	C50: WAS 100uF @ 160V - IS 100uF @ 100V. CORRECTION OF SCHEMATIC ONLY TO REFLECT ACTUAL PART BEING USED	07/06/95	T.F.
G	SEE ECO-493 FOR LIST OF CHANGES	09/08/95	T.F.
H	ADD CONNECTIONS FOR UNIVERSAL AC INPUT	10/04/95	R.M.S.
	CORRECT INPUT LABELING TO CORRESPOND WITH PCB ADD C60: 1 @ 230V ECO-747.	03/27/95	T.F.



RENKUS-HEINZ, Inc.

Title: **AC INPUT MODULE**

Size	Number	Rev
D	700-PCA103	H
Date	12/06/94	Drawn by
		R.M.S.
Filename	D00651-H-501	Sheet
		1 of 1



REV	DESCRIPTION	DATE	BY
D	NOTE, REF FILE, RH-AMP-508	01/15/95	T.F.
E	DEL 7879955, ADD D1-2, R1-4, D1-4, C29 & C30. RELEASE REV E, ECO-555	02/09/95	R.N.S.
F	D1 - D4, REVERSE ALL. R1 & R3, WAS 1K IS 2K. R2 & R4, WAS 1K, IS 1.21K. C29 & C30, WAS 47UF @ 100V, IS 22UF @ 250V (C29&C30 REF, SWITCHED), ECO-652	02/24/95	T.F.
G	BR7, WAS 1A, IS 2A. C1, C5, C9, C12, WAS 1UF @ 50V, IS 1UF @ 100V. C17, C20, WAS 1UF @ 100V, IS 2UF @ 100V. DEL, 1200W REF, CLEANUP NOTATION, ECO-797.	07/07/95	T.F.
H	DEL D1-D4, R1-R4, D1-Q2, C17-C22, C29-C30, BR5-BR6, ECO-811	04/01/96	T.F.
J	WAS JUMPER WIRE FROM CN501-1 TO RED1 - IS TWO 0 OHM JUMPERS IN LOC. R3 & D3. WAS JUMPER WIRE FROM CN501-3 TO BLUE1 - IS TWO 0 OHM JUMPERS IN LOC. R1 & D1. ECO-849	04/24/96	T.F.
K	C27 & C28 WERE 12000UF/50V, ECO #3091.	6/23/00	GL

RENKUS-HEINZ, Inc.

Title: POWER SUPPLY
1500 WATT AMPLIFIER

Size: D Number: 700-PCA079 Rev: K

Date: 12/06/94 Drawn by: R.N.S.

Filename: D00053-K.S01 Sheet: 1 of 1