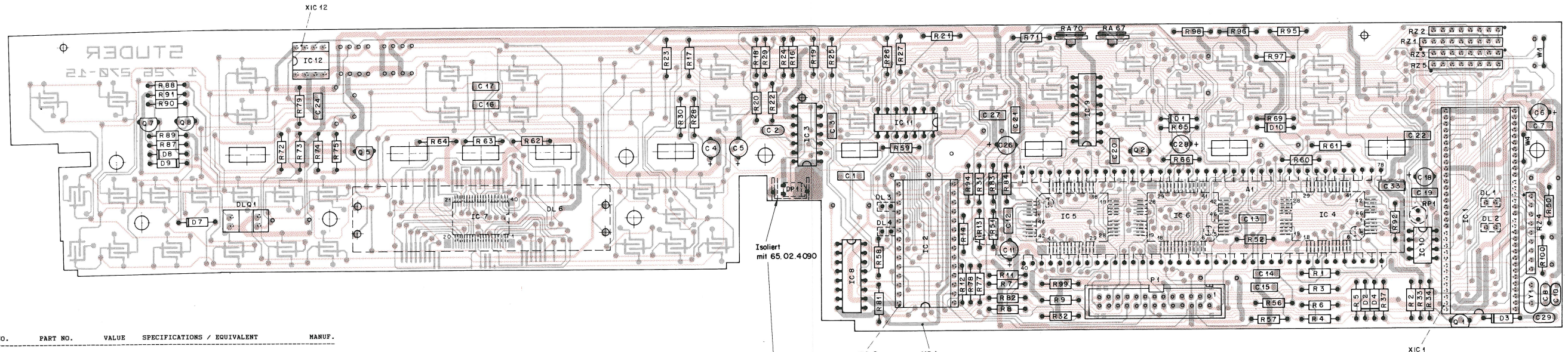


MICROCOMPUTER PCB 1.725.291.20 B250 (-S)



IND.	POS.NO.	PART NO.	VALUE	SPECIFICATIONS / EQUIVALENT	MANUF.
A.....1	73.01.0202	FIP		20SD01 20 Digit Display	NEC-FU
C.....1	59.06.0103		10 nF	10%, 63V, PETP	
C.....2	59.32.2122		1,2 nF	10%, 20V, CER	
C.....3	59.06.0103		10 nF	10%, 63V, PETP	
C.....4	59.22.5220		22 uF	-20%, 25V, EL	
C.....5	59.22.8229		2,2 uF	-20%, 25V, EL	
C.....6	59.22.5101		100 uF	-20%, 10V, EL	
C.....7	59.06.0104		100 nF	10%, 63V, PETP	
C.....8	59.34.2220		22 pF	10%, 40V, CER	
C.....9	59.34.2220		22 pF	10%, 40V, CER	
C.....10	59.34.2220		22 pF	10%, 40V, CER	
C.....11	59.22.5101		100 uF	-20%, 10V, EL	
C.....12	59.06.0104		100 nF	10%, 63V, PETP	
C.....13	59.06.0104		100 nF	10%, 63V, PETP	
C.....14	59.06.0104		100 nF	10%, 63V, PETP	
C.....15	59.06.0104		100 nF	10%, 63V, PETP	
C.....16	59.06.0103		10 nF	10%, 63V, PETP	
C.....17	59.32.2681		680 pF	10%, 40V, CER	
C.....18	59.22.6100		10 uF	-20%, 10V, EL	
C.....19	59.06.0104		100 nF	10%, 63V, PETP	
C.....20	59.06.0472		4,7 nF	10%, 63V, PETP	
C.....21	59.06.5472		4,7 nF	5%, 63V, PETP	
C.....22	59.06.0104		100 nF	10%, 63V, PETP	
C.....24	59.06.0332		3,3 nF	10%, 63V, PETP	
C.....26	59.22.3101		100 uF	-20%, 63V, EL	
C.....27	59.06.0104		100 nF	10%, 63V, PETP	
C.....28	59.22.6100		10 uF	-20%, 25V, EL	
C.....29	59.34.2220		22 pF	10%, 40V, CER	
C.....33	59.06.0104		100 nF	10%, 63V, PETP	
D.....1	50.04.0125	1N 4448		Any	Any
D.....2	50.04.0125	1N 4448		Any	Any
D.....3	50.04.0125	1N 4448		Any	Any
D.....4	50.04.0125	1N 4448		Any	Any
D.....7	50.04.0125	1N 4448		Any	Any
D.....8	50.04.0125	1N 4448		Any	Any
D.....9	50.04.0125	1N 4448		Any	Any

STUDER (00) 89/02/13 "SI MICROCOMPUTER BOARD B250 "ESE PL 1.725.291.20 PAGE 1

IND.	POS.NO.	PART NO.	VALUE	SPECIFICATIONS / EQUIVALENT	MANUF.
D.....10	50.04.0125	1N 4448		Any	Any
DL.....1	50.04.2702	LED		yellow SPV551 REC / MV5123	STA/GI
DL.....2	50.04.2701	LED		red SPV551 REC / MV5123	STA/GI
DL.....3	50.04.2702	LED		yellow SPV551 REC / MV5123	STA/GI
DL.....4	50.04.2702	LED		yellow SPV551 REC / MV5123	STA/GI
DL.....6	1.726.270.02	LED		Diffuser for LCD	STU
DLQ.....1	50.04.3001	MSD 804		Slotted Optical Switch/IST804	PH
BP.....1	50.04.2136	BFW 50			PH
IC.....1	1.726.273.20	uP		I/O Processor 63A01Y	STU
IC.....2	1.726.295.05	uP		Micro controller PCF84C00 CMOS	STU
IC.....3	50.11.0121	TBA2800		IR Detector	ITT
IC.....4	50.62.0001	SED2020		FoA FIP-Driver	SE
IC.....5	50.62.0001	SED2020		FoA FIP-Driver	SE
IC.....6	50.62.0001	SED2020		FoA FIP-Driver	SE
IC.....7	50.16.0116	FCF8577		LCD-Driver	PH
IC.....8	50.17.1595	74HC095		0Bit Shift reg. with output latch	DIV
IC.....9	50.07.1538	4538		Dual Monoflop CMOS	PH/MOT
IC.....10	50.11.0122	TL7705		Reset Generator	TI
IC.....11	50.17.1004	74HC04		Hex Inverter	DIV
IC.....12	50.14.0152	FCB672		1 kBit EPROM SNOS Unprogrammed	STU
NP.....1	1.726.270.15	1 PCS		MICROCOMPUTER PCB 63A01Y CARBON	STU
NP.....6	1.726.270.03	1 PCS		Tube	STU
NP.....18	1.726.270.09	1 PCS		IR-Reflektor	STU
F.....1	54.14.2003	26 Pin		Connector for Ribbon-Cable	Any
Q.....1	50.03.0436	BC237		NPN Small signal	Any
Q.....2	50.03.0515	BC307		PNP Small signal	Any
Q.....5	50.03.0436	BC237		NPN Small signal	Any
Q.....7	50.03.0436	BC237		NPN Small signal	Any
Q.....8	50.03.0436	BC237		NPN Small signal	Any

STUDER (00) 89/02/13 "SI MICROCOMPUTER BOARD B250 "ESE PL 1.725.291.20 PAGE 2

IND.	POS.NO.	PART NO.	VALUE	SPECIFICATIONS / EQUIVALENT	MANUF.
R.....1	57.11.3102		1 K	2%, 0.25W, MF	
R.....2	57.11.3222		2,2 K	2%, 0.25W, MF	
R.....3	57.11.3332		3,3 K	2%, 0.25W, MF	
R.....4	57.11.3332		3,3 K	2%, 0.25W, MF	
R.....5	57.11.3222		2,2 K	2%, 0.25W, MF	
R.....6	57.11.3102		1 K	2%, 0.25W, MF	
R.....7	57.11.3332		3,3 K	2%, 0.25W, MF	
R.....8	57.11.3332		3,3 K	2%, 0.25W, MF	
R.....9	57.11.3471		470	2%, 0.25W, MF	
R.....10	57.11.3471		470	2%, 0.25W, MF	
R.....11	57.11.3471		470	2%, 0.25W, MF	
R.....12	57.11.3471		470	2%, 0.25W, MF	
R.....13	57.11.3471		470	2%, 0.25W, MF	
R.....14	57.11.3181		180	2%, 0.25W, MF	
R.....15	57.11.3363		36 K	1%, 0.25W, MF	
R.....16	57.11.3183		18 K	1%, 0.25W, MF	
R.....17	57.11.3183		18 K	1%, 0.25W, MF	
R.....18	57.11.3183		18 K	1%, 0.25W, MF	
R.....19	57.11.3183		18 K	1%, 0.25W, MF	
R.....20	57.11.3183		18 K	1%, 0.25W, MF	
R.....21	57.11.3183		18 K	1%, 0.25W, MF	
R.....22	57.11.3363		36 K	1%, 0.25W, MF	
R.....23	57.11.3363		36 K	1%, 0.25W, MF	
R.....24	57.11.3363		36 K	1%, 0.25W, MF	
R.....25	57.11.3363		36 K	1%, 0.25W, MF	
R.....26	57.11.3363		36 K	1%, 0.25W, MF	
R.....27	57.11.3363		36 K	1%, 0.25W, MF	
R.....28	57.11.3221		220	2%, 0.25W, MF	
R.....29	57.11.3102		1 K	2%, 0.25W, MF	
R.....30	57.11.3472		4,7 K	2%, 0.25W, MF	
R.....31	57.11.3181		180	2%, 0.25W, MF	
R.....32	57.11.3472		4,7 K	2%, 0.25W, MF	
R.....33	57.11.3821		820	2%, 0.25W, MF	
R.....34	57.11.3104		100 K	2%, 0.25W, MF	
R.....37	57.11.3103		10 K	2%, 0.25W, MF	
R.....50	57.11.3332		3,3 K	2%, 0.25W, MF	
R.....51	57.11.3471		470	2%, 0.25W, MF	
R.....52	57.11.3560		56 K	2%, 0.25W, MF	
R.....55	57.11.3150		15	2%, 0.25W, MF	

STUDER (00) 89/02/13 "SI MICROCOMPUTER BOARD B250 "ESE PL 1.725.291.20 PAGE 3

IND.	POS.NO.	PART NO.	VALUE	SPECIFICATIONS / EQUIVALENT	MANUF.
R.....57	57.11.3150		15	2%, 0.25W, MF	
R.....58	57.11.3471		470	2%, 0.25W, MF	
R.....59	57.11.3471		470	2%, 0.25W, MF	
R.....60	57.11.3820		82	2%, 0.25W, MF	
R.....61	57.11.3471		470	2%, 0.25W, MF	
R.....62	57.11.3105		1 M	2%, 0.25W, MF	
R.....63	57.11.3820		82	2%, 0.25W, MF	
R.....64	57.11.3471		470	2%, 0.25W, MF	
R.....65	57.11.3123		12 K	2%, 0.25W, MF	
R.....66	57.11.3361		360	2%, 0.25W, MF	
R.....67	58.02.4102		1 K	20%, 0,1 W, Trian-Pot.	
R.....69	57.11.3472		4,7 K	2%, 0.25W, MF	
R.....70	58.02.4473		47 K	20%, 0,1 W, Trian-Pot.	
R.....71	57.11.3623		62 K	1%, 0.25W, MF	
R.....72	57.11.3181		180	2%, 0.25W, MF	
R.....73	57.11.3333		33 K	2%, 0.25W, MF	
R.....74	57.11.3103		10 K	2%, 0.25W, MF	
R.....75	57.11.3103		10 K	2%, 0.25W, MF	
R.....77	57.11.3332		3,3 K	2%, 0.25W, MF	
R.....78	57.11.3182		18 K	2%, 0.25W, MF	
R.....79	57.11.3752		7,5 K	2%, 0.25W, MF	
R.....81	57.11.3221		220	2%, 0.25W, MF	
R.....82	57.11.3221		220	2%, 0.25W, MF	
R.....83	57.11.3821		820	2%, 0.25W, MF	
R.....84	57.11.3181		180	2%, 0.25W, MF	
R.....87	57.11.3333		33 K	2%, 0.25W, MF	
R.....88	57.11.5225		2,2 M	5%, 0.25W, MF	
R.....89	57.11.3102		1 K	2%, 0.25W, MF	
R.....90	57.11.3472		4,7 K	2%, 0.25W, MF	
R.....91	57.11.3560		56	2%, 0.25W, MF	
R.....92	57.11.3332		3,3 K	2%, 0.25W, MF	
R.....94	57.11.3333		33 K	2%, 0.25W, MF	
R.....95	57.11.3222		2,2 K	2%, 0.25W, MF	
R.....96	57.11.3124		120 K	2%, 0.25W, MF	
R.....97	57.11.3159		1,5	2%, 0.25W, MF	
R.....98	57.11.3563		56 K	2%, 0.25W, MF	
R.....99	57.11.3159		1,5	2%, 0.25W, MF	

STUDER (00) 89/02/13 "SI MICROCOMPUTER BOARD B250 "ESE PL 1.725.291.20 PAGE 4

IND.	POS.NO.	PART NO.	VALUE	SPECIFICATIONS / EQUIVALENT	MANUF.
R.....100	57.11.3332		3,3 K	2%, 0.25W, MF	
RP.....1	57.99.0255	LDR		57K @10 Lux, 7K @100 Lux A9060 13	Hei
RZ.....1	57.88.4104	8*100K		Resistor array	
RZ.....2	57.88.2332	4*3,3K		Resistor array	
RZ.....3	57.88.2332	4*3,3K		Resistor array	
RZ.....4	57.88.4104	8*100K		Resistor array	
RZ.....5	57.88.2332	4*3,3K		Resistor array	
W.....1	1.010.323.64		7.5mm	Wire 0,6 mm diam.	
W.....4	1.010.323.64		7.5mm	Wire 0,6 mm diam.	
XIC.....1	53.03.0364		64 Pin	IC-Socket	
XIC.....2	53.03.0173		28 Pin	IC-Socket	
XIC.....12	53.03.0166		8 Pin	IC-Socket	
Y.....1	89.01.0560	SRX28595		4,9152MHz 100ppm/Gr.C/TD18/MMP049	Ny/SaR

STUDER (00) 89/02/13 "SI MICROCOMPUTER BOARD B250 "ESE PL 1.725.291.20 PAGE 5

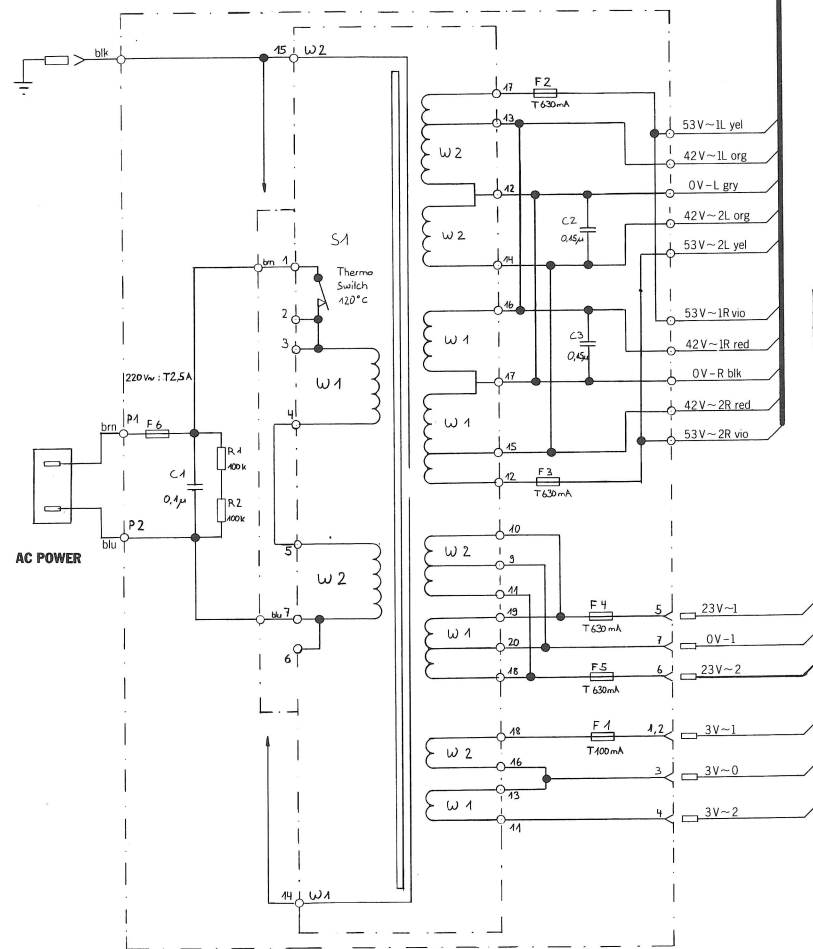
MAINS TRANSFORMER 220V 1.725.205.81 B150  
POWER SUPPLY PCB 1.725.235.00 B150

02.01.88 Stegmair	AMPLIFIER B 150	PAGE 1 OF 1
STUDER	MAINS TRANSFORMER	SC 1.725.205.00

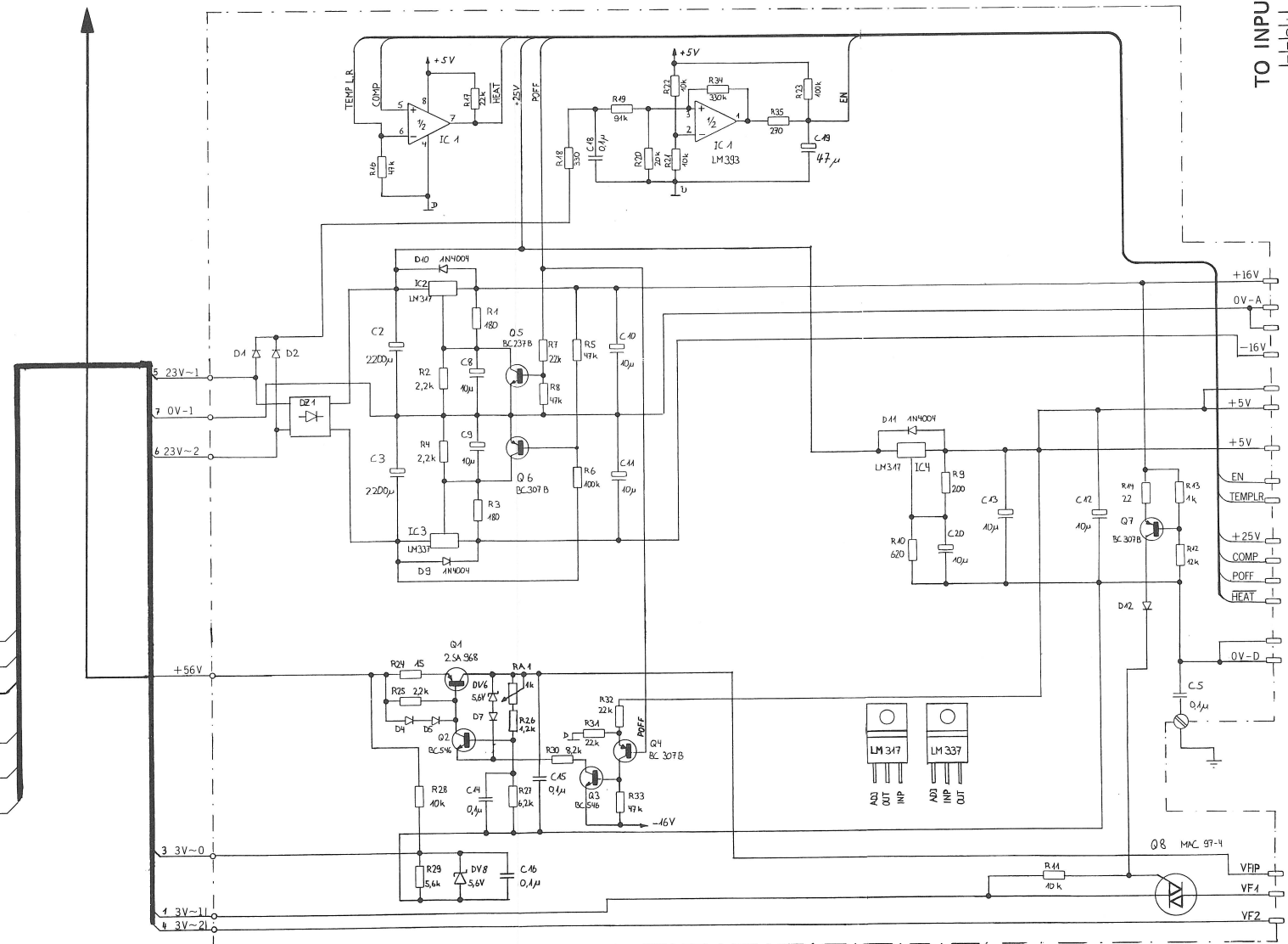
02.02.88 Stegmair	AMPLIFIER B150	PAGE 2 OF 2
STUDER	POWER SUPPLY	SC 1.725.235.00

SEE POWER AMPLIFIER

MAINS TRANSFORMER 220V  
1.725.205.81

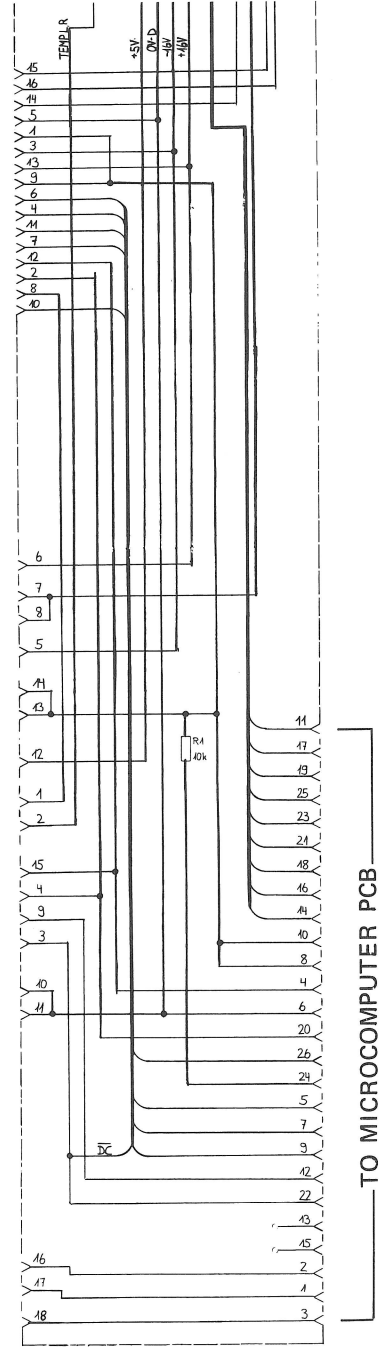


TO POWER AMPLIFIER POWER SUPPLY PCB 1.725.235.00



TO INPUT/OUTPUT PCB

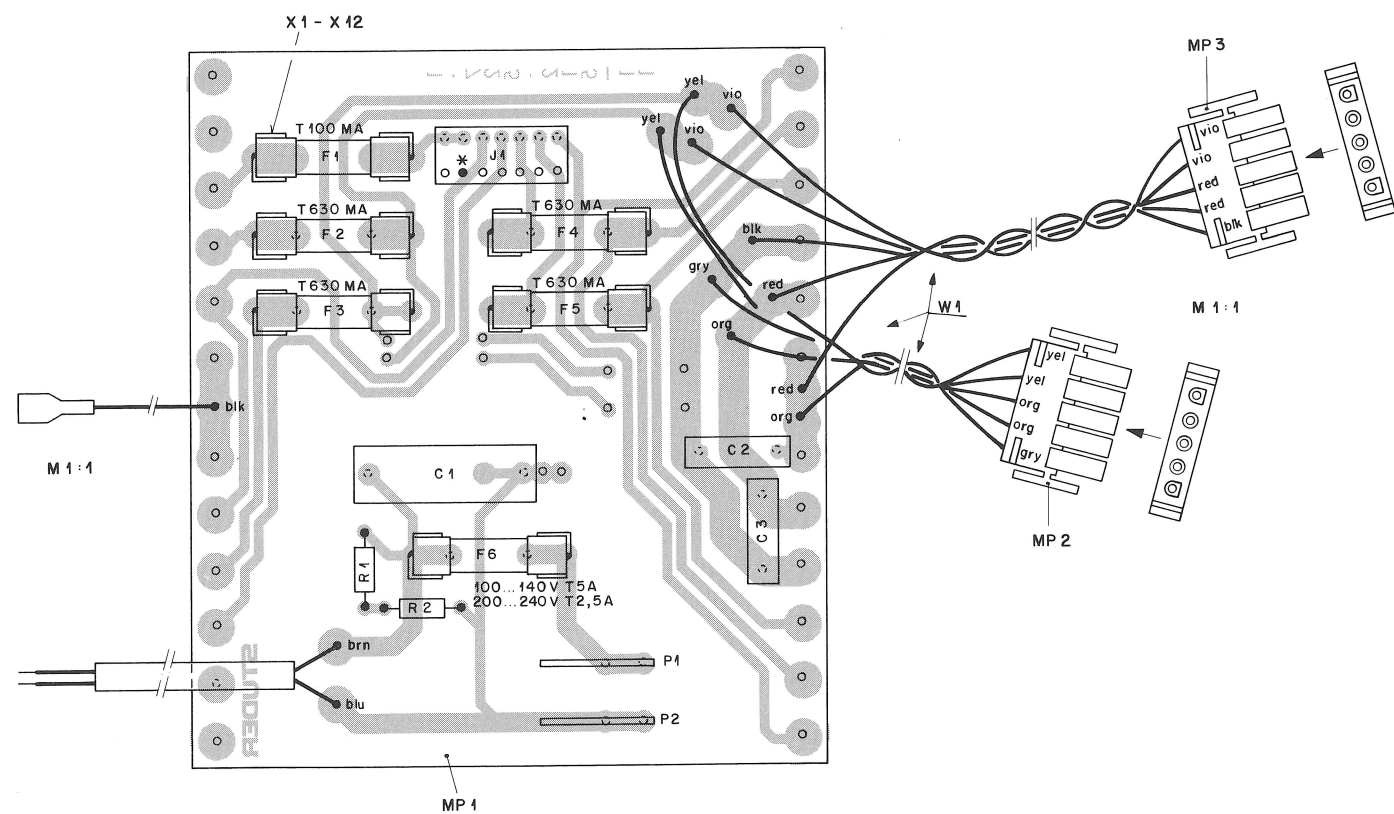
- HPHL 45
- HPHR 46
- HPHLOV 45
- OV-D 4
- +5V 4
- +16V 43
- +5V 9
- SENS 6
- DC 4
- IRINH 4
- +25V 42
- COMP 2
- EN 8
- BIN 40



MAINS TRANSFORMER 110V: 1.725.206.81  
MAINS TRANSFORMER 240V: 1.725.207.81

INTERCONNECTION PCB  
1.725.285.00

MAINS TRANSFORMER 220V 1.725.205.81 B150



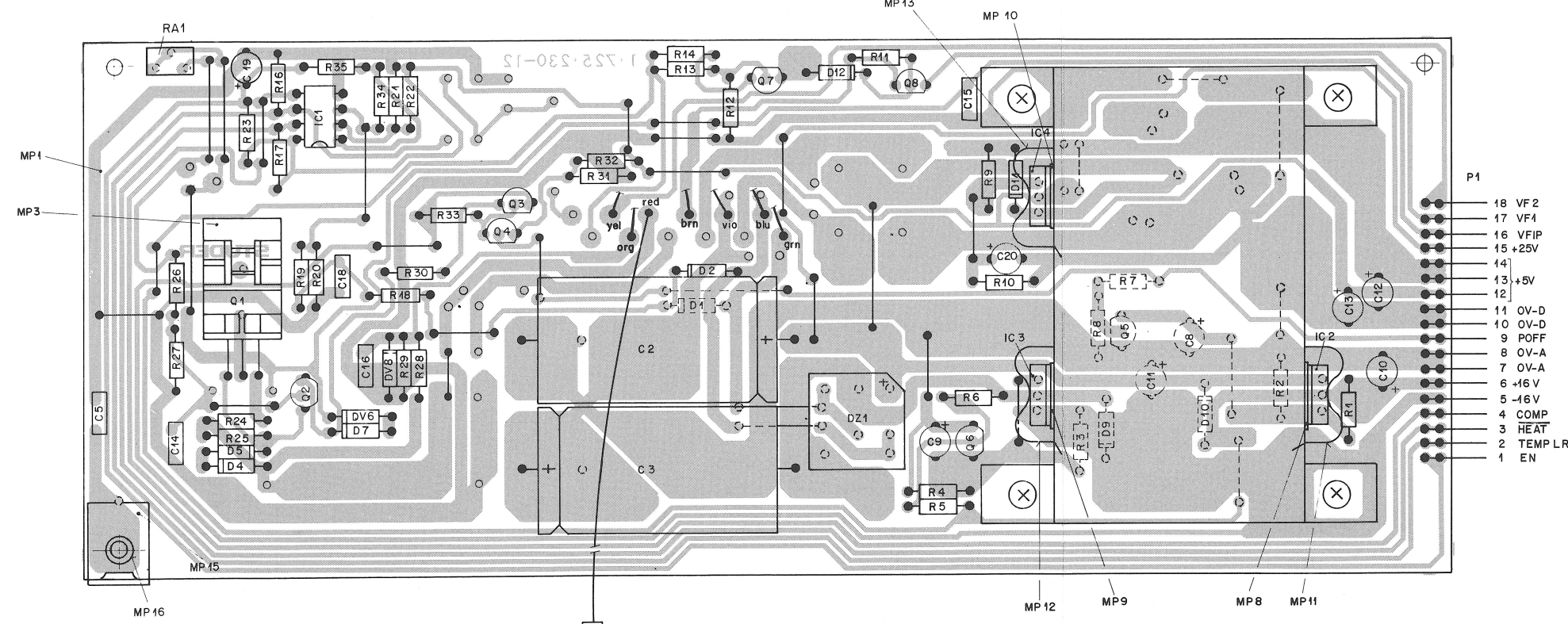
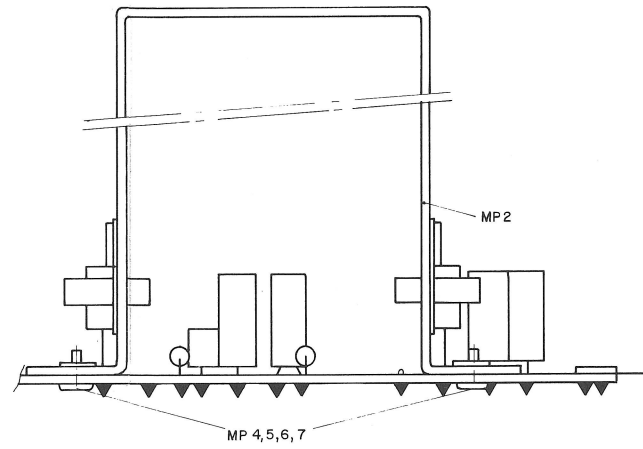
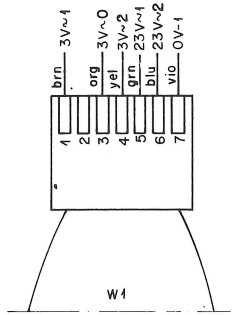
TND.	POS.NO.	PART NO.	VALUE	SPECIFICATIONS / EQUIVALENT	MANUF.
C.....1		59.99.0453	0.1uF	IEC 65	RIFA
C.....2		59.02.2154	0.15uF	100 V	
C.....3		59.02.2154	0.15uF	100 V	
F.....1		51.01.0107		Fuse T 100mA	
F.....2		51.01.0115		Fuse T 630MA	
F.....3		51.01.0115		Fuse T 630MA	
F.....4		51.01.0115		Fuse T 630MA	
F.....5		51.01.0115		Fuse T 630MA	
F.....6		51.01.0121		Fuse T 2.5A	
MP.....1		1.725.215.11		Distributor Board	
MP.....2		54.25.0305		Power Connector	
MP.....3		54.25.0305		Power Connector	
MP.....4		35.03.0109		Wire Belt	
J.....1		54.01.0218	7pole	CIS-Socket	
P.....1		54.02.0328		Power Connector	
P.....2		54.02.0328		Power Connector	
R.....1		57.11.3104	100K	2% 0.25W ± MF	
R.....2		57.11.3104	100K	2% 0.25W ± MF	
W.....1		1.725.215.93		Wire List	
X.....1		53.03.0142		Fuse Holder	
X.....2		53.03.0142		Fuse Holder	
X.....3		53.03.0142		Fuse Holder	
X.....4		53.03.0142		Fuse Holder	
X.....5		53.03.0142		Fuse Holder	
X.....6		53.03.0142		Fuse Holder	
X.....7		53.03.0142		Fuse Holder	
X.....8		53.03.0142		Fuse Holder	
X.....9		53.03.0142		Fuse Holder	
X.....10		53.03.0142		Fuse Holder	
X.....11		53.03.0142		Fuse Holder	

STUDER (00) 88/01/06 SP DISTRIBUTOR BOARD PL 1.725.215.00 PAGE 1

TND.	POS.NO.	PART NO.	VALUE	SPECIFICATIONS / EQUIVALENT	MANUF.
X.....12		53.03.0142		Fuse Holder	

NRIG 88/01/06  
STUDER (00) 88/01/06 SP DISTRIBUTOR BOARD PL 1.725.215.00 PAGE 2

POWER SUPPLY PCB 1.725.235.00 B150



IND.	POS.ND.	PART NO.	VALUE	SPECIFICATIONS / EQUIVALENT	MANUF.
MP	1	1.725.230.12		Power Supply - PCB	ST
MP	2	1.725.230.01		Heatsink	ST
MP	3	50.20.3004		Isolator	
MP	4	21.99.0180		Screw M3x5	
MP	5	21.99.0180		Screw M3x5	
MP	6	21.99.0180		Screw M3x5	
MP	7	21.99.0180		Screw M3x5	
MP	8	50.20.0315		Isolator	
MP	9	50.20.0315		Isolator	
MP	10	50.20.0315		Isolator	
MP	11	50.20.2004		Montage-Clip for TO 220	
MP	12	50.20.2004		Montage-Clip for TO 220	
MP	13	50.20.2004		Montage-Clip for TO 220	
MP	14	54.01.0233	7 pole	Connector CIS	ST
MP	15	1.726.740.01		Holder	
MP	16	28.21.1450		Tubular Rivet	
P	1	54.31.0278	18-Pin	Plug assembly CIS	AMP
Q	1	50.03.0801	25A968	Power Transistor	PNP
Q	2	50.03.0491	BC 546B	Small signal Vce:60V	NPN
Q	3	50.03.0491	BC 546B	Small signal Vce:60V	NPN
Q	4	50.03.0515	BC 307B	Small signal	PNP
Q	5	50.03.0436	BC 237B	Small signal	NPN
Q	6	50.03.0515	BC 307B	Small signal	PNP
Q	7	50.03.0515	BC 307B	Small signal	PNP
Q	8	50.08.0001	MAC 97-4	Triac 0.6 A, 200 V	Mot
R	1	57.11.3181	2% 0.25W	MF	
R	2	57.11.3222	2+2 k	2% 0.25W	MF
R	3	57.11.3181	180	2% 0.25W	MF
R	4	57.11.3222	2+2 k	2% 0.25W	MF
R	5	57.11.3475	47 k	2% 0.25W	MF
R	6	57.11.3104	100 k	2% 0.25W	MF
R	7	57.11.3223	22 k	2% 0.25W	MF
R	8	57.11.3475	47 k	2% 0.25W	MF
R	9	57.11.3201	200	1% 0.25W	MF

STUDER (02) 88/08/25 SP POWER SUPPLY \*ESE\* PL 1.725.235.00 PAGE 2

IND.	POS.ND.	PART NO.	VALUE	SPECIFICATIONS / EQUIVALENT	MANUF.
R	10	57.11.3621	620	1% 0.25W	MF
R	11	57.11.3103	10 k	2% 0.25W	MF
R	12	57.11.3123	12 k	2% 0.25W	MF
R	13	57.11.3102	1 k	2% 0.25W	MF
R	14	57.11.3220	22	2% 0.25W	MF
R	15	57.11.3473	47 k	2% 0.25W	MF
R	16	57.11.3222	2+2 k	2% 0.25W	MF
R	17	57.11.3223	22 k	2% 0.25W	MF
R	18	57.11.3331	330	2% 0.25W	MF
R	19	57.11.3913	91 k	2% 0.25W	MF
R	20	57.11.3220	20 k	2% 0.25W	MF
R	21	57.11.3103	10 k	2% 0.25W	MF
R	22	57.11.3103	10 k	2% 0.25W	MF
R	23	57.11.3104	100 k	2% 0.25W	MF
R	24	57.11.3150	15	2% 0.25W	MF
R	25	57.11.3222	2+2 k	2% 0.25W	MF
R	26	57.11.3122	1+2 k	2% 0.25W	MF
R	27	57.11.3622	62	2% 0.25W	MF
R	28	57.11.3103	10 k	2% 0.25W	MF
R	29	57.11.3562	5.6 k	2% 0.25W	MF
R	30	57.11.3822	8+2 k	2% 0.25W	MF
R	31	57.11.3223	22 k	2% 0.25W	MF
R	32	57.11.3223	22 k	2% 0.25W	MF
R	33	57.11.3473	47 k	2% 0.25W	MF
R	34	57.11.3334	330 k	2% 0.25W	MF
R	35	57.11.3271	270	2% 0.25W	MF
RA	1	58.01.9102	1 k	10% 0.5 W	
W	1	1.725.235.93		Wire list	

STUDER (02) 88/08/25 SP POWER SUPPLY \*ESE\* PL 1.725.235.00 PAGE 3

IND.	POS.ND.	PART NO.	VALUE	SPECIFICATIONS / EQUIVALENT	MANUF.
C	2	59.25.5222	2200 uF	-20% 40V	EL
C	3	59.25.5222	2200 uF	-20% 40V	EL
C	4	59.20.0104	0.1 uF	10% 63V	PETP
C	5	59.22.6100	10 uF	-20% 35V	EL
C	6	59.22.6100	10 uF	-20% 35V	EL
C	7	59.22.6100	10 uF	-20% 35V	EL
C	8	59.22.6100	10 uF	-20% 35V	EL
C	9	59.22.6100	10 uF	-20% 35V	EL
C	10	59.22.6100	10 uF	-20% 35V	EL
C	11	59.22.6100	10 uF	-20% 35V	EL
C	12	59.22.6100	10 uF	-20% 35V	EL
C	13	59.22.6100	10 uF	-20% 35V	EL
C	14	59.06.0104	0.1 uF	10% 63V	PETP
C	15	59.06.0104	0.1 uF	10% 63V	PETP
C	16	59.06.0104	0.1 uF	10% 63V	PETP
C	17	59.06.0104	0.1 uF	10% 63V	PETP
C	18	59.20.0104	0.1 uF	10% 63V	PETP
C	19	59.22.3470	47 uF	-20% 10V	EL
C	20	59.22.6100	10 uF	-20% 35V	EL
D	1	50.04.0125	LN 4448		SI
D	2	50.04.0133	BAV 20		SI
D	3	50.04.0125	LN 4448		SI
D	4	50.04.0133	BAV 20		SI
D	5	50.04.0125	LN 4448		SI
D	6	50.04.0125	LN 4448		SI
D	7	50.04.0125	LN 4448		SI
D	8	50.04.0105	LN 4004		SI
D	9	50.04.0105	LN 4004		SI
D	10	50.04.0105	LN 4004		SI
D	11	50.04.0105	LN 4004		SI
D	12	50.04.0125	LN 4448		SI
DV	6	50.04.1108	5x6 V	5% 0+4 W	Z
DV	8	50.04.1108	5x6 V	5% 0+4 W	Z
DZ	1	70.31.0226		280 Vx 2 A	GI
IC	1	50.05.0283	LM 393 N	Dual comp. with open coll. / LM 393 P	NS, TI
IC	2	50.10.0104	LM 317 T	+1.2-37 V +V-Reg./LM317 KC	NS, TI
IC	3	50.10.0105	LM 337 T	-1.2-37 V +V-Reg./LM337 KC	NS, TI
IC	4	50.10.0104	LM 317 T	+1.2-37 V +V-Reg./LM317 KC	NS, TI

STUDER (02) 88/08/25 SP POWER SUPPLY \*ESE\* PL 1.725.235.00 PAGE 4

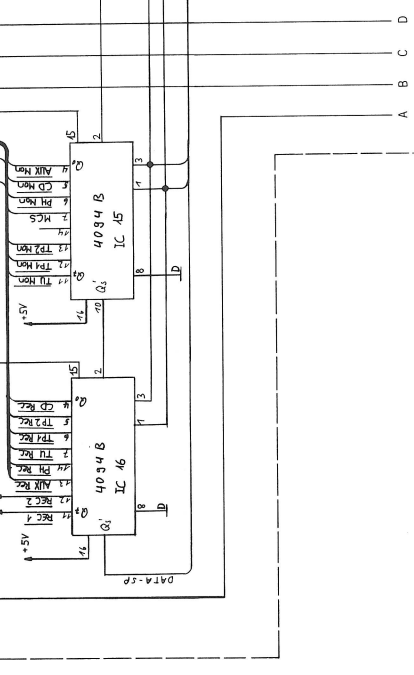
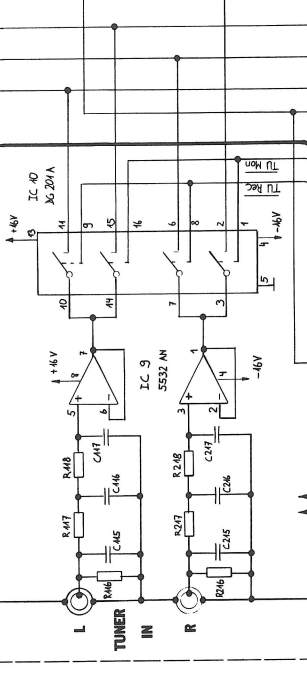
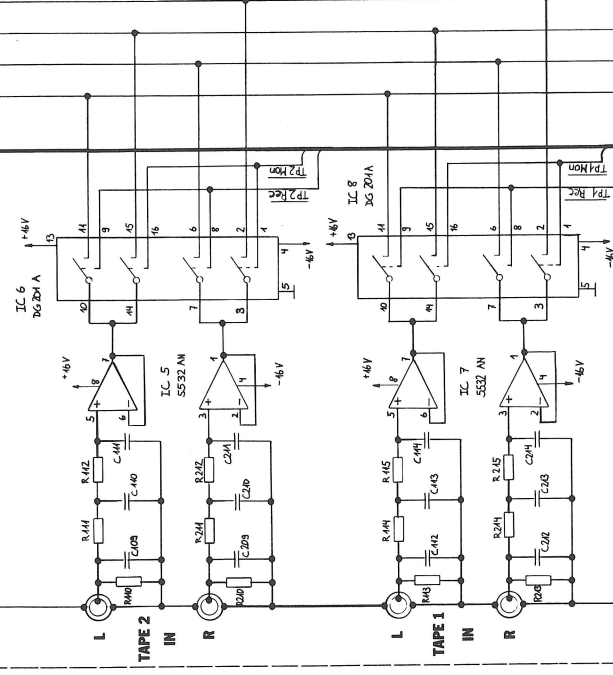
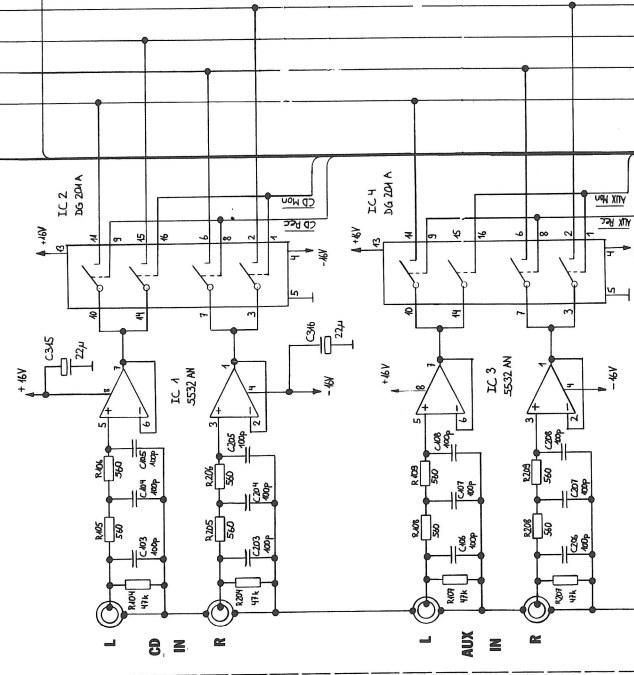
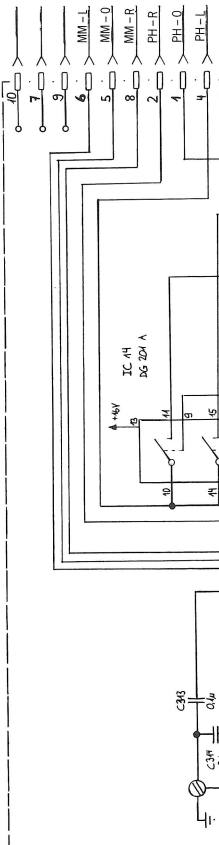
IND.	POS.ND.	PART NO.	VALUE	SPECIFICATIONS / EQUIVALENT	MANUF.
(01)				Adjustment of FIP brightness	
(02)				Quality improvement	
EL				Electrolytic, CER=Ceramic, PETP=Polyester, SI=Silicon, MF=Metalfilm	
Manufacturer:				NS=National Semiconductors, TI=Texas Instruments	
				MOT=Motorola, PH=Philips, Sie=Siemens, ST=Studer	
ORIG	88/01/07	(01)	88/02/29	(02)	88/08/25

STUDER (02) 88/08/25 SP POWER SUPPLY \*ESE\* PL 1.725.235.00 PAGE 4

INPUT/OUTPUT 1.725.245.00 B150 PART I



TO PHONO PCB



TO PREAMPLIFIER

TO PART II

02.02.88	Steinmetz				
STUDER			AMPLIFIER B150		PAGE 1 OF 4
INPUT-OUTPUT UNIT			SC	1.725.245.00	

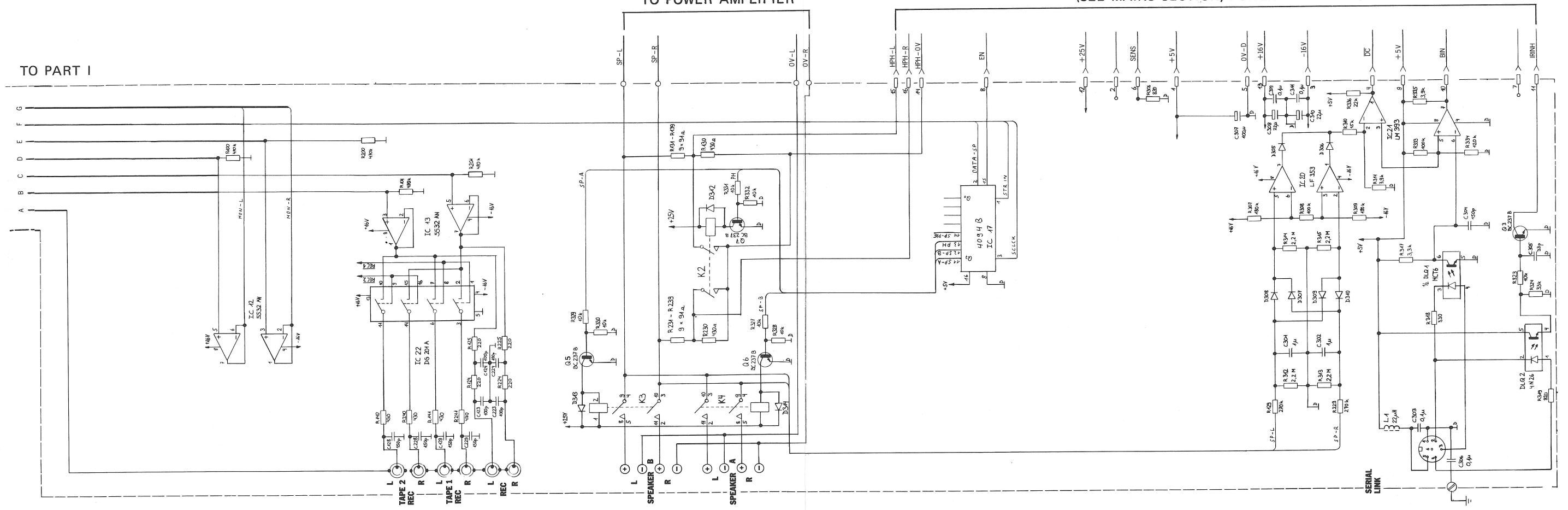
INPUT/OUTPUT PCB 1.725.245.00 B150 PART II



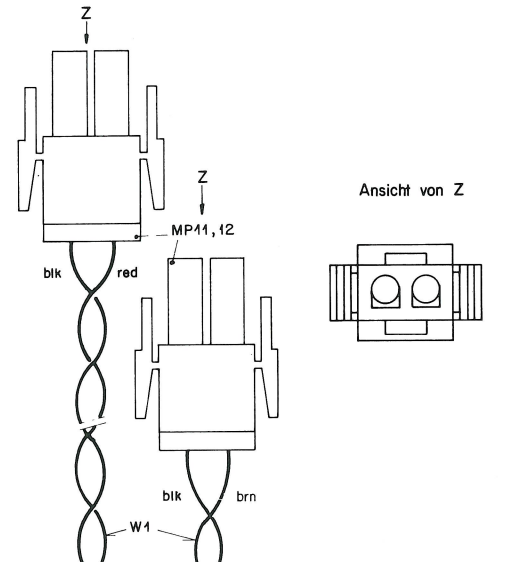
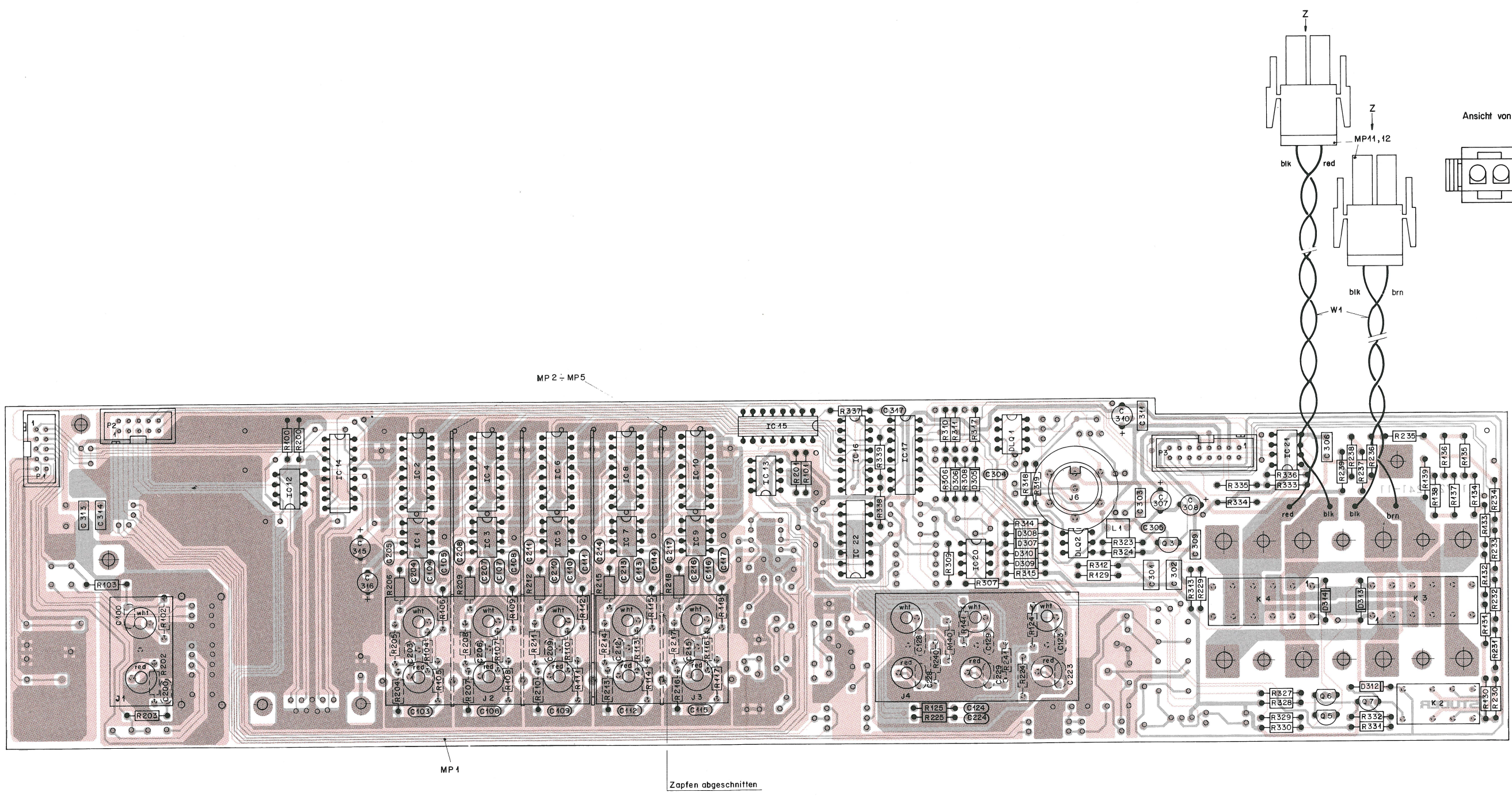
TO PART I

TO POWER AMPLIFIER

TO INTERCONNECTION PCB  
(SEE MAINS SECTION, POWER AMPLIFIER)



INPUT/OUTPUT PCB 1.725.245.00 B150





INPUT/OUTPUT PCB 1.725.245.00 B150

Table with columns: IND., POS-NO., PART NO., VALUE, SPECIFICATIONS / EQUIVALENT, MANUF. (Rows 1-223)

Table with columns: IND., POS-NO., PART NO., VALUE, SPECIFICATIONS / EQUIVALENT, MANUF. (Rows 224-423)

Table with columns: IND., POS-NO., PART NO., VALUE, SPECIFICATIONS / EQUIVALENT, MANUF. (Rows 424-623)

S T U D E R (01) 88/02/22 SP INPUT-OUTPUT UNIT "ESE" PL 1.725.245.00 PAGE 1

S T U D E R (01) 88/02/22 SP INPUT-OUTPUT UNIT "ESE" PL 1.725.245.00 PAGE 4

S T U D E R (01) 88/02/22 SP INPUT-OUTPUT UNIT "ESE" PL 1.725.245.00 PAGE 7

Table with columns: IND., POS-NO., PART NO., VALUE, SPECIFICATIONS / EQUIVALENT, MANUF. (Rows 624-823)

Table with columns: IND., POS-NO., PART NO., VALUE, SPECIFICATIONS / EQUIVALENT, MANUF. (Rows 824-1023)

S T U D E R (01) 88/02/22 SP INPUT-OUTPUT UNIT "ESE" PL 1.725.245.00 PAGE 2

S T U D E R (01) 88/02/22 SP INPUT-OUTPUT UNIT "ESE" PL 1.725.245.00 PAGE 5

Table with columns: IND., POS-NO., PART NO., VALUE, SPECIFICATIONS / EQUIVALENT, MANUF. (Rows 1024-1223)

Table with columns: IND., POS-NO., PART NO., VALUE, SPECIFICATIONS / EQUIVALENT, MANUF. (Rows 1224-1423)

S T U D E R (01) 88/02/22 SP INPUT-OUTPUT UNIT "ESE" PL 1.725.245.00 PAGE 3

S T U D E R (01) 88/02/22 SP INPUT-OUTPUT UNIT "ESE" PL 1.725.245.00 PAGE 6

Wiring List
R...336 57.11.3223 22 KOhm 2% 0.25W MF
R...337 57.11.3472 47 KOhm 2% 0.25W MF
R...338 57.11.3163 16 KOhm 2% 0.25W MF
R...339 57.11.3562 56 KOhm 2% 0.25W MF

(01) Correction of POSLIST

Left Channel: NO. 100 \*\*\*
Right Channel: NO. 200 \*\*\*
Both Channel: NO. 300 \*\*\* + NO. 1 \*\*\*

MF=Metalfilm
Cer=Ceramic
PET=Polyester
EL=Electrolytic

MANUFACTURER: WAKA, St=Studer, Mot=Motorola, To=Toshiba
SK=Siliconix, Ph=Philips, NS=National, Semiconductors
Ha=Harris, TI=Texas Instruments, R=Raytheon, Sig=Signetics

ORIG 88/01/07 (01) 88/02/22

S T U D E R (01) 88/02/22 SP INPUT-OUTPUT UNIT "ESE" PL 1.725.245.00 PAGE 7

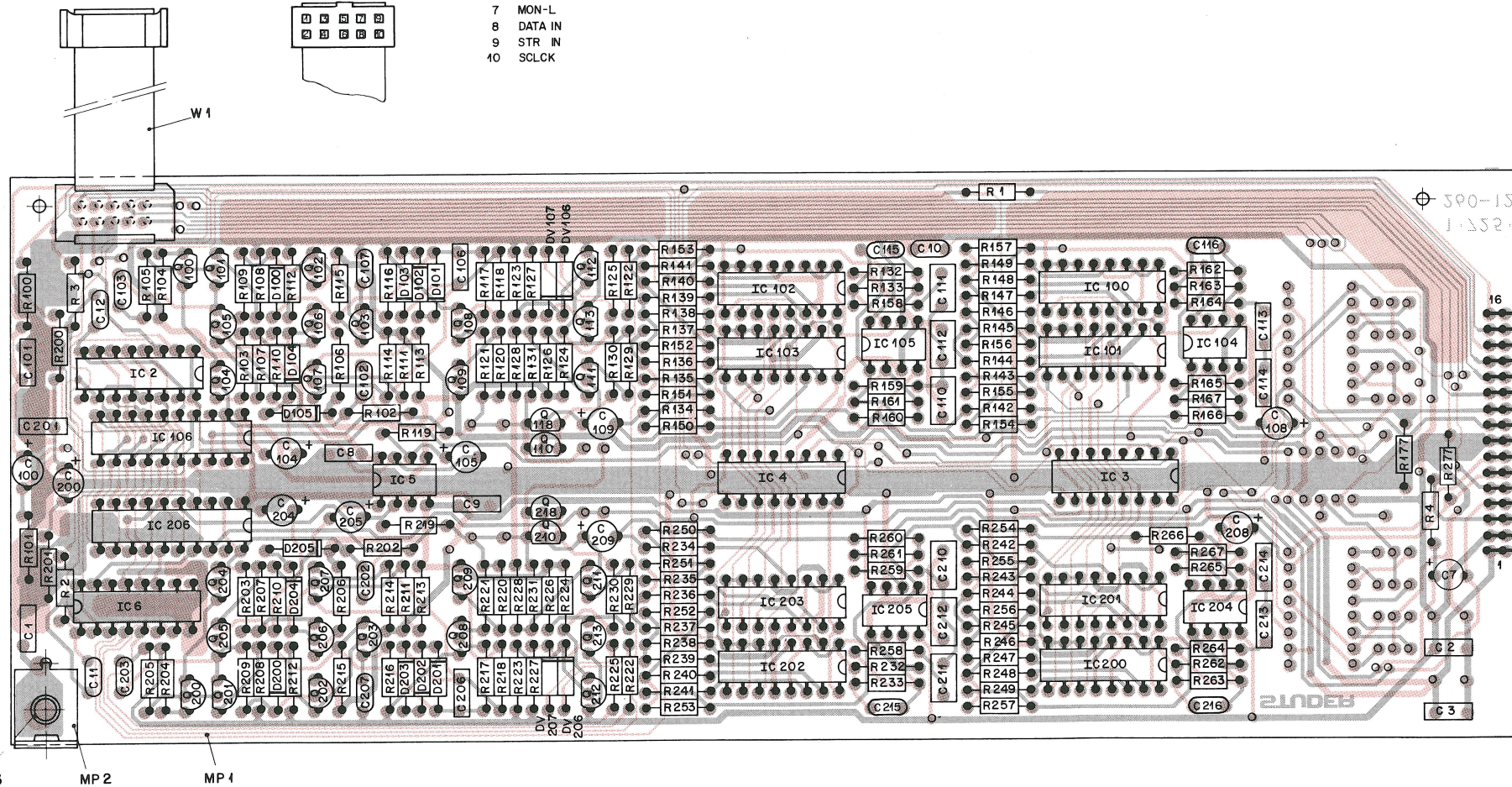






PREAMPLIFIER PCB 1.725.265.00 B150

- 1
- 2
- 3
- 4
- 5 MON-R
- 6 MON-O
- 7 MON-L
- 8 DATA IN
- 9 STR IN
- 10 SCLCK



IND.	POS. NO.	PART NO.	VALUE	SPECIFICATIONS / EQUIVALENT	MANUF.
C.....1	59.06.0104	0.1 uF	10%	25V, PETP	
C.....2	59.06.0104	0.1 uF	10%	25V, PETP	
C.....7	59.22.3101	100 uF	-20%	10V, EL	
C.....8	59.06.0104	0.1 uF	10%	25V, PETP	
C.....9	59.06.0104	0.1 uF	10%	25V, PETP	
C.....10	59.34.4101	100 pF	10%	25V, Cer	
C.....11	59.34.4101	100 pF	10%	25V, Cer	
C.....12	59.34.4101	100 pF	10%	25V, Cer	
C...100	59.22.5220	22 uF	-20%	10V, EL	
C...101	59.06.0102	1 nF	10%	25V, PETP	
C...102	59.34.0569	5.6 pF	10%	25V, Cer	
C...103	59.34.5471	470 pF	10%	25V, Cer	
C...104	59.22.5220	22 uF	-20%	25V, EL	
C...105	59.22.5220	22 uF	-20%	25V, EL	
C...106	59.06.0224	220 nF	10%	25V, PETP	
C...107	59.34.4221	220 pF	10%	25V, Cer	
C...108	59.22.5220	22 uF	-20%	10V, EL	
C...109	59.22.3470	47 uF	-20%	10V, EL	
C...110	59.06.5105	1 uF	5%	25V, PETP	
C...111	59.06.5105	1 uF	5%	25V, PETP	
C...112	59.06.5474	470 nF	5%	25V, PETP	
C...113	59.06.5682	6.8 nF	5%	25V, PETP	
C...114	59.06.5103	10 nF	5%	25V, PETP	
C...115	59.34.4101	100 pF	10%	25V, Cer	
C...116	59.34.4101	100 pF	10%	25V, Cer	
C...117	59.22.5220	22 uF	-20%	10V, EL	
C...201	59.06.0102	1 nF	10%	25V, PETP	
C...202	59.34.0569	5.6 pF	10%	25V, Cer	
C...203	59.34.5471	470 pF	10%	25V, Cer	
C...204	59.22.5220	22 uF	-20%	25V, EL	
C...205	59.22.5220	22 uF	-20%	25V, EL	
C...206	59.06.0224	220 nF	10%	25V, PETP	
C...207	59.34.4221	220 pF	10%	25V, Cer	
C...208	59.22.5220	22 uF	-20%	10V, EL	
C...209	59.22.3470	47 uF	-20%	10V, EL	
C...210	59.06.5105	1 uF	5%	25V, PETP	

STUDER (00) 88/01/07 SP PREAMPLIFIER \*ESE\* PL 1.725.265.00 PAGE 1

IND.	POS. NO.	PART NO.	VALUE	SPECIFICATIONS / EQUIVALENT	MANUF.
C...211	59.06.5105	1 uF	5%	25V, PETP	
C...212	59.06.5474	470 nF	5%	25V, PETP	
C...213	59.06.5682	6.8 nF	5%	25V, PETP	
C...214	59.06.5103	10 nF	5%	25V, PETP	
C...215	59.34.4101	100 pF	10%	25V, Cer	
C...216	59.34.4101	100 pF	10%	25V, Cer	
D...100	50.04.0125	1N 4448			
D...101	50.04.0125	1N 4448			
D...102	50.04.0125	1N 4448			
D...103	50.04.0125	1N 4448			
D...104	50.04.0125	1N 4448			
D...105	50.04.0125	1N 4448			
D...106	50.04.0125	1N 4448			
D...201	50.04.0125	1N 4448			
D...202	50.04.0125	1N 4448			
D...203	50.04.0125	1N 4448			
D...204	50.04.0125	1N 4448			
D...205	50.04.0125	1N 4448			
DV...106	50.04.1117	Z 12 V		5%, 0+4 W	
DV...107	50.04.1117	Z 12 V		5%, 0+4 W	
DV...206	50.04.1117	Z 12 V		5%, 0+4 W	
DV...207	50.04.1117	Z 12 V		5%, 0+4 W	
IC...2	50.07.0018	MC 14094B	HEF 4094B		Not Ph
IC...3	50.07.0018	MC 14094B	HEF 4094B		Not Ph
IC...4	50.07.0018	MC 14094B	HEF 4094B		Not Ph
IC...5	50.09.0101	TL 072ACP	LF 353		Tri N5
IC...6	50.07.0018	MC 14094B	HEF 4094B		Not Ph
IC...100	50.07.0015	MC 14053B	HEF 4053B		Not Ph
IC...101	50.07.0015	MC 14053B	HEF 4053B		Not Ph
IC...102	50.07.0015	MC 14053B	HEF 4053B		Not Ph
IC...103	50.07.0015	MC 14053B	HEF 4053B		Not Ph
IC...104	50.09.0106	NE 5532AN	OP-AMP Dual ,Low Noise		Sig
IC...105	50.09.0106	NE 5532AN	OP-AMP Dual ,Low Noise		Sig
IC...106	50.07.0037	AD 7528JN			ADI

STUDER (00) 88/01/07 SP PREAMPLIFIER \*ESE\* PL 1.725.265.00 PAGE 2

IND.	POS. NO.	PART NO.	VALUE	SPECIFICATIONS / EQUIVALENT	MANUF.
IC...200	50.07.0015	MC 14053B	HEF 4053B		Not Ph
IC...201	50.07.0015	MC 14053B	HEF 4053B		Not Ph
IC...202	50.07.0015	MC 14053B	HEF 4053B		Not Ph
IC...203	50.07.0015	MC 14053B	HEF 4053B		Not Ph
IC...204	50.09.0106	NE 5532AN	OP-AMP Dual ,Low Noise		Sig
IC...205	50.09.0106	NE 5532AN	OP-AMP Dual ,Low Noise		Sig
IC...206	50.07.0037	AD 7528JN			ADI
MP...1	1.725.260.12			Preamplifier PCB	
MP...2	1.726.780.01			Holder	
MP...3	28.21.1450			Tabular Rivet	
P...1	54.31.0276	16-PGLE		Plug Assembly CIS	
Q...100	50.03.0496	BC 560	PNP		Sie
Q...101	50.03.0496	BC 560	PNP		Sie
Q...102	50.03.0496	BC 560	PNP		Sie
Q...103	50.03.0496	BC 560	PNP		Sie
Q...104	50.03.0215	SK 170	FET		TO
Q...105	50.03.0215	SK 170	FET		TO
Q...106	50.03.0497	BC 550	NPN		Sie
Q...107	50.03.0497	BC 550	NPN		Sie
Q...108	50.03.0497	BC 550	NPN		Sie
Q...109	50.03.0496	BC 560	PNP		Sie
Q...110	50.03.0350	J 112	FET		Not
Q...111	50.03.0350	J 112	FET		Not
Q...112	50.03.0515	BC 307B	PNP		ITT
Q...113	50.03.0515	BC 307B	PNP		ITT
Q...114	50.03.0350	J 112	FET		Not
Q...200	50.03.0496	BC 560	PNP		Sie
Q...201	50.03.0496	BC 560	PNP		Sie
Q...202	50.03.0496	BC 560	PNP		Sie
Q...203	50.03.0496	BC 560	PNP		Sie
Q...204	50.03.0215	SK 170	FET		TO
Q...205	50.03.0215	SK 170	FET		TO
Q...206	50.03.0497	BC 550	NPN		Sie
Q...207	50.03.0497	BC 550	NPN		Sie

STUDER (00) 88/01/07 SP PREAMPLIFIER \*ESE\* PL 1.725.265.00 PAGE 3

PREAMPLIFIER PCB 1.725.265.00 B150

IND.	POS.NO.	PART NO.	VALUE	SPECIFICATIONS / EQUIVALENT	MANUF.	IND.	POS.NO.	PART NO.	VALUE	SPECIFICATIONS / EQUIVALENT	MANUF.
Q...	208	50-03-0497	BC 550	NPN	Sie	R...	230	57-11-5106	10 MOhm	5%, 0.25W, MF	
Q...	209	50-03-0496	BC 560	PNP	Sie	R...	231	57-11-3682	6-8 KOhm	2%, 0.25W, MF	
Q...	210	50-03-0350	J 112	FET	Hot	R...	232	57-11-3474	470 KOhm	2%, 0.25W, MF	
Q...	211	50-03-0350	J 112	FET	Hot	R...	233	57-11-3512	5-1 KOhm	2%, 0.25W, MF	
Q...	212	50-03-0515	BC 307B	PNP	ITT	R...	234	57-11-3103	10 KOhm	2%, 0.25W, MF	
Q...	213	50-03-0515	BC 307B	PNP	ITT	R...	235	57-11-3103	10 KOhm	2%, 0.25W, MF	
Q...	218	50-03-0350	J 112	FET	Hot	R...	236	57-11-3103	10 KOhm	2%, 0.25W, MF	
R...	1	57-11-3472	4-7 KOhm	2%, 0.25W, MF		R...	237	57-11-3103	10 KOhm	2%, 0.25W, MF	
R...	2	57-11-3472	4-7 KOhm	2%, 0.25W, MF		R...	238	57-11-3103	10 KOhm	2%, 0.25W, MF	
R...	3	57-11-3472	4-7 KOhm	2%, 0.25W, MF		R...	239	57-11-3103	10 KOhm	2%, 0.25W, MF	
R...	4	57-11-3101	100 Ohm	2%, 0.25W, MF		R...	240	57-11-3103	10 KOhm	2%, 0.25W, MF	
R...	100	57-11-3391	390 Ohm	2%, 0.25W, MF		R...	241	57-11-3103	10 KOhm	2%, 0.25W, MF	
R...	101	57-11-3223	22 KOhm	2%, 0.25W, MF		R...	242	57-11-3103	10 KOhm	2%, 0.25W, MF	
R...	102	57-11-3475	4-7 MOhm	5%, 0.25W, CF		R...	243	57-11-3103	10 KOhm	2%, 0.25W, MF	
R...	103	57-11-3101	100 Ohm	2%, 0.25W, MF		R...	244	57-11-3103	10 KOhm	2%, 0.25W, MF	
R...	104	57-11-3471	470 Ohm	2%, 0.25W, MF		R...	245	57-11-3103	10 KOhm	2%, 0.25W, MF	
R...	105	57-11-3221	220 Ohm	2%, 0.25W, MF		R...	246	57-11-3103	10 KOhm	2%, 0.25W, MF	
R...	106	57-11-3101	100 Ohm	2%, 0.25W, MF		R...	247	57-11-3103	10 KOhm	2%, 0.25W, MF	
R...	107	57-11-3101	100 Ohm	2%, 0.25W, MF		R...	248	57-11-3103	10 KOhm	2%, 0.25W, MF	
R...	108	57-11-3471	470 Ohm	2%, 0.25W, MF		R...	249	57-11-3103	10 KOhm	2%, 0.25W, MF	
R...	109	57-11-3102	1 KOhm	2%, 0.25W, MF		R...	250	57-11-3512	5-1 KOhm	2%, 0.25W, MF	
R...	110	57-11-3472	4-7 KOhm	2%, 0.25W, MF		R...	251	57-11-3512	5-1 KOhm	2%, 0.25W, MF	
R...	111	57-11-3103	10 KOhm	2%, 0.25W, MF		R...	252	57-11-3512	5-1 KOhm	2%, 0.25W, MF	
R...	112	57-11-3222	2-2 KOhm	2%, 0.25W, MF		R...	253	57-11-3512	5-1 KOhm	2%, 0.25W, MF	
R...	113	57-11-3101	100 Ohm	2%, 0.25W, MF		R...	254	57-11-3512	5-1 KOhm	2%, 0.25W, MF	
R...	114	57-11-3393	39 KOhm	2%, 0.25W, MF		R...	255	57-11-3512	5-1 KOhm	2%, 0.25W, MF	
R...	115	57-11-3393	39 KOhm	2%, 0.25W, MF		R...	256	57-11-3512	5-1 KOhm	2%, 0.25W, MF	
R...	116	57-11-3221	220 Ohm	2%, 0.25W, MF		R...	257	57-11-3512	5-1 KOhm	2%, 0.25W, MF	
R...	117	57-11-3470	47 Ohm	2%, 0.25W, MF		R...	258	57-11-3112	1-1 KOhm	2%, 0.25W, MF	
R...	118	57-11-3470	47 Ohm	2%, 0.25W, MF		R...	259	57-11-3912	9-1 KOhm	2%, 0.25W, MF	
R...	119	57-11-3683	68 KOhm	2%, 0.25W, MF		R...	260	57-11-3203	20 KOhm	2%, 0.25W, MF	
R...	120	57-11-3470	47 Ohm	2%, 0.25W, MF		R...	261	57-11-3203	20 KOhm	2%, 0.25W, MF	
R...	121	57-11-3470	47 Ohm	2%, 0.25W, MF		R...	262	57-11-3474	470 KOhm	2%, 0.25W, MF	
R...	122	57-11-3103	10 KOhm	2%, 0.25W, MF		R...	263	57-11-3512	5-1 KOhm	2%, 0.25W, MF	
R...	123	57-11-3103	10 KOhm	2%, 0.25W, MF		R...	264	57-11-3561	560 Ohm	2%, 0.25W, MF	
R...	124	57-11-3104	100 KOhm	2%, 0.25W, MF		R...	265	57-11-3302	3 KOhm	2%, 0.25W, MF	
						R...	266	57-11-3682	6-8 KOhm	2%, 0.25W, MF	

S T U D E R (00) 88/01/07 SP PREAMPLIFIER "ESE" PL 1.725-265-00 PAGE 4

S T U D E R (00) 88/01/07 SP PREAMPLIFIER "ESE" PL 1.725-265-00 PAGE 7

IND.	POS.NO.	PART NO.	VALUE	SPECIFICATIONS / EQUIVALENT	MANUF.	IND.	POS.NO.	PART NO.	VALUE	SPECIFICATIONS / EQUIVALENT	MANUF.
R...	125	57-11-3103	10 KOhm	2%, 0.25W, MF		R...	267	57-11-3682	6-8 KOhm	2%, 0.25W, MF	
R...	126	57-11-3104	100 KOhm	2%, 0.25W, MF		R...	277	57-11-3472	4-7 KOhm	2%, 0.25W, MF	
R...	127	57-11-3103	10 KOhm	2%, 0.25W, MF		W...	1	1-023-110-06	10-POLE	Flat Cable	
R...	128	57-11-3221	220 Ohm	2%, 0.25W, MF							
R...	129	57-11-5106	10 MOhm	5%, 0.25W, CF							
R...	130	57-11-5106	10 MOhm	5%, 0.25W, CF							
R...	131	57-11-3682	6-8 KOhm	2%, 0.25W, MF							
R...	132	57-11-3474	470 KOhm	2%, 0.25W, MF							
R...	133	57-11-3512	5-1 KOhm	2%, 0.25W, MF							
R...	134	57-11-3103	10 KOhm	2%, 0.25W, MF							
R...	135	57-11-3103	10 KOhm	2%, 0.25W, MF							
R...	136	57-11-3103	10 KOhm	2%, 0.25W, MF							
R...	137	57-11-3103	10 KOhm	2%, 0.25W, MF							
R...	138	57-11-3103	10 KOhm	2%, 0.25W, MF							
R...	139	57-11-3103	10 KOhm	2%, 0.25W, MF							
R...	140	57-11-3103	10 KOhm	2%, 0.25W, MF							
R...	141	57-11-3103	10 KOhm	2%, 0.25W, MF							
R...	142	57-11-3103	10 KOhm	2%, 0.25W, MF							
R...	143	57-11-3103	10 KOhm	2%, 0.25W, MF							
R...	144	57-11-3103	10 KOhm	2%, 0.25W, MF							
R...	145	57-11-3103	10 KOhm	2%, 0.25W, MF							
R...	146	57-11-3103	10 KOhm	2%, 0.25W, MF							
R...	147	57-11-3103	10 KOhm	2%, 0.25W, MF							
R...	148	57-11-3103	10 KOhm	2%, 0.25W, MF							
R...	149	57-11-3103	10 KOhm	2%, 0.25W, MF							
R...	150	57-11-3512	5-1 KOhm	2%, 0.25W, MF							
R...	151	57-11-3512	5-1 KOhm	2%, 0.25W, MF							
R...	152	57-11-3512	5-1 KOhm	2%, 0.25W, MF							
R...	153	57-11-3512	5-1 KOhm	2%, 0.25W, MF							
R...	154	57-11-3512	5-1 KOhm	2%, 0.25W, MF							
R...	155	57-11-3512	5-1 KOhm	2%, 0.25W, MF							
R...	156	57-11-3512	5-1 KOhm	2%, 0.25W, MF							
R...	157	57-11-3512	5-1 KOhm	2%, 0.25W, MF							
R...	158	57-11-3112	1-1 KOhm	2%, 0.25W, MF							
R...	159	57-11-3912	9-1 KOhm	2%, 0.25W, MF							
R...	160	57-11-3203	20 KOhm	2%, 0.25W, MF							
R...	161	57-11-3203	20 KOhm	2%, 0.25W, MF							

Both Channel: 1-....  
 Left Channel: 100-....  
 Right Channel: 200-....  
 EL=Electrolytic, Cer=Ceramic, PETP=Polyester  
 MF=Metal Film, CF=Carbon Film  
 MANUFACTURER: AD=Analog Devices, NS=National Semiconductors  
 Ph=Philips, Mot=Motorola, TI=Texas Instruments, T0=Toshiba

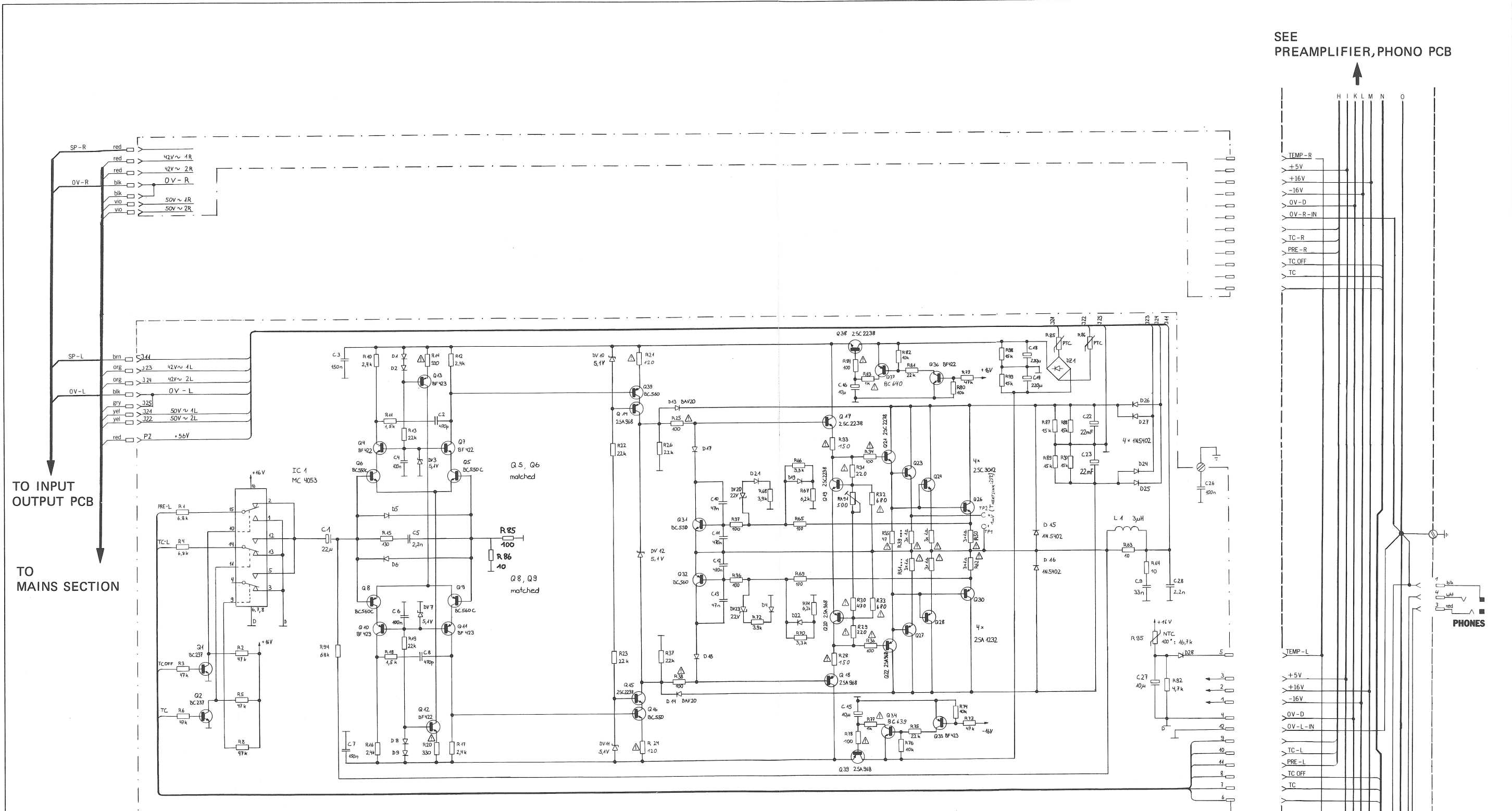
DRIC 88/01/07 S T U D E R (00) 88/01/07 SP PREAMPLIFIER "ESE" PL 1.725-265-00 PAGE 8

IND.	POS.NO.	PART NO.	VALUE	SPECIFICATIONS / EQUIVALENT	MANUF.
R...	162	57-11-3474	470 KOhm	2%, 0.25W, MF	
R...	163	57-11-3512	5-1 KOhm	2%, 0.25W, MF	
R...	164	57-11-3561	560 Ohm	2%, 0.25W, MF	
R...	165	57-11-3302	3 KOhm	2%, 0.25W, MF	
R...	166	57-11-3682	6-8 KOhm	2%, 0.25W, MF	
R...	167	57-11-3682	6-8 KOhm	2%, 0.25W, MF	
R...	177	57-11-3472	4-7 KOhm	2%, 0.25W, MF	
R...	200	57-11-3391	390 Ohm	2%, 0.25W, MF	
R...	201	57-11-3223	22 KOhm	2%, 0.25W, MF	
R...	202	57-11-5475	4-7 MOhm	5%, 0.25W, CF	
R...	203	57-11-3101	100 Ohm	2%, 0.25W, MF	
R...	204	57-11-3471	470 Ohm	2%, 0.25W, MF	
R...	205	57-11-3221	220 Ohm	2%, 0.25W, MF	
R...	206	57-11-3101	100 Ohm	2%, 0.25W, MF	
R...	207	57-11-3101	100 Ohm	2%, 0.25W, MF	
R...	208	57-11-3471	470 Ohm	2%, 0.25W, MF	
R...	209	57-11-3102	1 KOhm	2%, 0.25W, MF	
R...	210	57-11-3472	4-7 KOhm	2%, 0.25W, MF	
R...	211	57-11-3103	10 KOhm	2%, 0.25W, MF	
R...	212	57-11-3222	2-2 KOhm	2%, 0.25W, MF	
R...	213	57-11-3101	100 Ohm	2%, 0.25W, MF	
R...	214	57-11-3393	39 KOhm	2%, 0.25W, MF	
R...	215	57-11-3393	39 KOhm	2%, 0.25W, MF	
R...	216	57-11-3221	220 Ohm	2%, 0.25W, MF	
R...	217	57-11-3470	47 Ohm	2%, 0.25W, MF	
R...	218	57-11-3470	47 Ohm	2%, 0.25W, MF	
R...	219	57-11-3683	68 KOhm	2%, 0.25W, MF	
R...	220	57-11-3470	47 Ohm	2%, 0.25W, MF	
R...	221	57-11-3470	47 Ohm	2%, 0.25W, MF	
R...	222	57-11-3103	10 KOhm	2%, 0.25W, MF	
R...	223	57-11-3103	10 KOhm	2%, 0.25W, MF	
R...	224	57-11-3104	100 KOhm	2%, 0.25W, MF	
R...	225	57-11-3103	10 KOhm	2%, 0.25W, MF	
R...	226	57-11-3104	100 KOhm	2%, 0.25W, MF	
R...	227	57-11-3103	10 KOhm	2%, 0.25W, MF	
R...	228	57-11-3221	220 Ohm	2%, 0.25W, MF	
R...	229	57-11-5106	10 MOhm	5%, 0.25W, CF	

S T U D E R (00) 88/01/07 SP PREAMPLIFIER "ESE" PL 1.725-265-00 PAGE 6



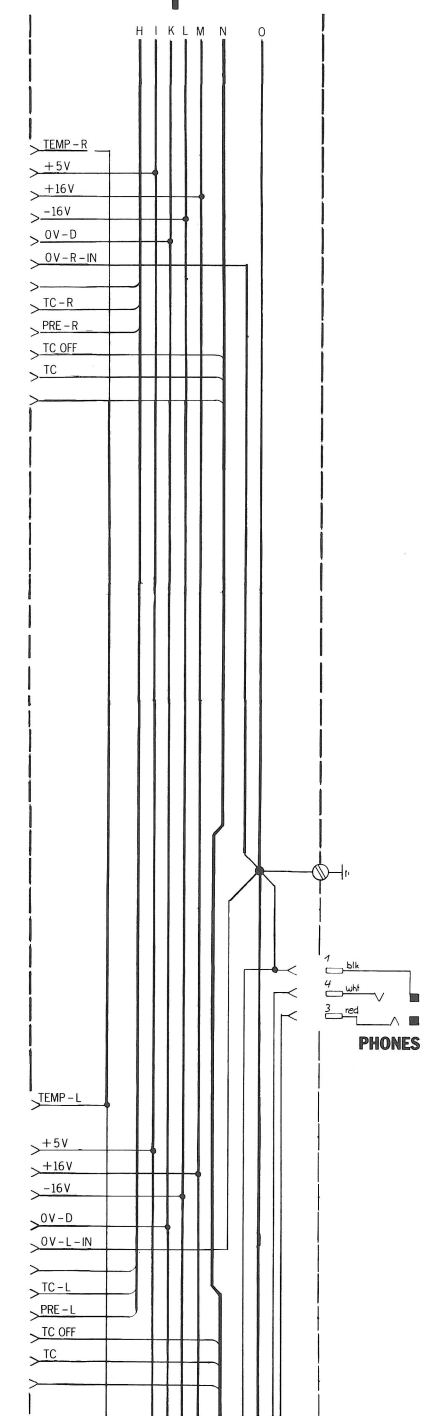
POWER AMPLIFIER 1.725.275.00 B150



TO INPUT  
OUTPUT PCB

TO MAINS SECTION

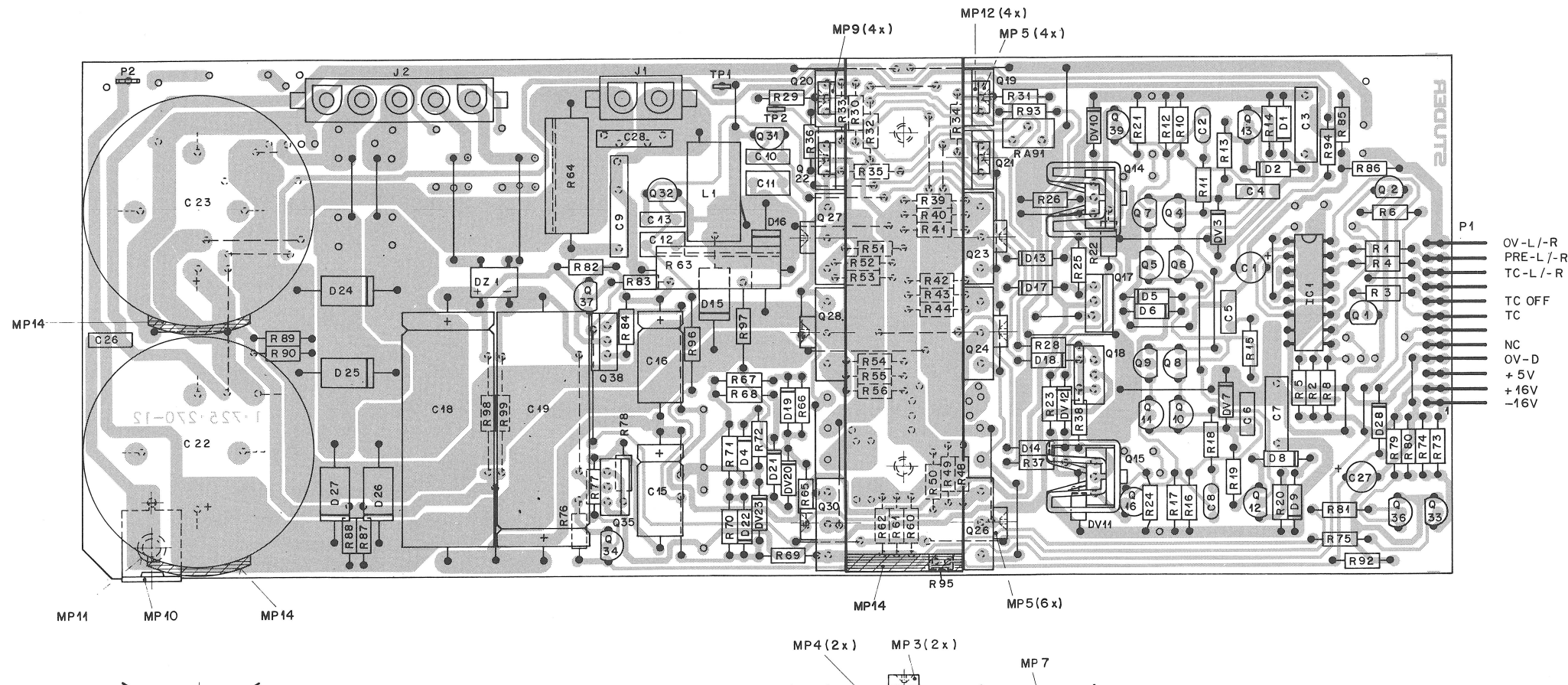
SEE  
PREAMPLIFIER, PHONO PCB



SEE  
MAINS SECTION

02_02_89 Steigelm	AMPLIFIER B150	PAGE 1 OF 3
STUDER	POWER AMPLIFIER	SC 1.725.275.00

POWER AMPLIFIER 1.725.275.00 B150



OV-L/-R  
PRE-L/-R  
TC-L/-R  
TC OFF  
TC  
NC  
OV-D  
+5V  
+16V  
-16V

IND.	POS.NO.	PART NO.	VALUE	SPECIFICATIONS / EQUIVALENT	MANUF.
C...	001	59.22.5220	22 uF	-10% + 10V + EL	
C...	002	59.34.5471	470 pF	5% + 63V + CER	
C...	003	59.02.2154	150 nF	10% + 100V + PETP/PHE	
C...	004	59.06.0104	100 nF	10% + 63V + PETP	
C...	005	59.06.5222	2.2 nF	5% + 63V + PETP	
C...	006	59.06.0104	100 nF	10% + 63V + PETP	
C...	007	59.02.2154	150 nF	10% + 100V + PETP/PHE	
C...	008	59.34.5471	470 pF	5% + 63V + CER	
C...	009	59.05.6333	33 nF	10% + 400V + PP	
C...	010	59.06.0473	47 nF	10% + 63V + PETP	
C...	011	59.36.0474	470 nF	10% + 63V + PETP	
C...	012	59.06.0474	470 nF	10% + 63V + PETP	
C...	013	59.36.0473	47 nF	10% + 63V + PETP	
C...	015	59.25.7100	10 uF	-10% + 100V + EL	
C...	016	59.25.7100	10 uF	-10% + 100V + EL	
C...	018	59.25.7221	220 uF	-10% + 100V + EL	
C...	019	59.25.7221	220 uF	-10% + 100V + EL	
C...	022	59.35.6153	15 nF	-20% + 63V + EL	
C...	023	59.35.6153	15 nF	-20% + 63V + EL	
C...	026	59.06.0104	100 nF	10% + 63V + PETP	
C...	027	59.22.6100	10 uF	-10% + 35V + EL	
C...	028	59.05.6222	2.2 nF	10% + 160V + PP	
D...	001	50.04.0125	1N4448		any
D...	002	50.04.0125	1N4448		any
D...	004	50.04.0133	BAV 20	Ur=120V	Ph
D...	005	50.04.0125	1N4448		any
D...	006	50.04.0125	1N4448		any
D...	008	50.04.0125	1N4448		any
D...	009	50.04.0125	1N4448		any
D...	013	50.04.0133	BAV 20	Ur=120V	Ph
D...	014	50.04.0133	BAV 20	Ur=120V	Ph
D...	015	50.04.0105	1N6004		Mot
D...	016	50.04.0105	1N6004		Mot
D...	017	50.04.0125	1N4448		any
D...	018	50.04.0125	1N4448		any
D...	019	50.04.0133	BAV 20	Ur=120V	Ph

STUDER (00) 88/01/11 SP POWER AMPLIFIER "ESE" PL 1.725.275.00 PAGE 1

IND.	POS.NO.	PART NO.	VALUE	SPECIFICATIONS / EQUIVALENT	MANUF.
D...	021	50.04.0133	BAV 20	Ur=120V	Ph
D...	022	50.04.0133	BAV 20	Ur=120V	Ph
D...	024	50.04.0507	1N5402	200 V + 3 A + MR 502	Mot
D...	025	50.04.0507	1N5402	200 V + 3 A + MR 502	Mot
D...	026	50.04.0507	1N5402	200 V + 3 A + MR 502	Mot
D...	027	50.04.0507	1N5402	200 V + 3 A + MR 502	Mot
D...	028	50.04.0125	1N4448		any
DV...	003	50.04.1112	5.1 V	Z 400 mH	any
DV...	004	50.04.1112	5.1 V	Z 400 mH	any
DV...	010	50.04.1112	5.1 V	Z 400 mH	any
DV...	011	50.04.1112	5.1 V	Z 400 mH	any
DV...	012	50.04.1112	5.1 V	Z 400 mH	any
DV...	020	50.04.1116	22 V	Z 400 mH	any
DV...	023	50.04.1116	22 V	Z 400 mH	any
DZ...	001	70.01.0217	DF 04M	400 V + 1 A	
IC...	001	50.07.0015	MC14053	Triple 2Chn. Analog Mpx.	Mot
J...	001	54.25.0002	2 pole	Power Connector	
J...	002	54.25.0005	5 pole	Power Connector	
L...	001	1.728.320.25	3.0uH	Output Coil	St
MP...	001	1.725.270.01	1 pcs	Cooling Block	
MP...	002	1.725.270.02	2 pcs	Thermoplastic Foil	
MP...	003	21.38.1372	2 pcs	Screw M3x16 Rustless	
MP...	004	1.010.503.27	2 pcs	Distance Holder	
MP...	005	21.29.0357	10 pcs	Screw M3x12	
MP...	007	1.725.270.12	1 pcs	Power Amp.PCB	
MP...	008	37.01.0101	20 pcs	Spring Washer	
MP...	009	1.010.098.27	4 pcs	Washer	
MP...	010	1.726.780.01	1 pcs	Holder	
MP...	011	28.21.1450	1 pcs	Tubular Rivet	
MP...	012	50.20.0404	4 pcs	Insulating Bush	
MP...	013	50.20.3004	2 pcs	Heatsink	

STUDER (00) 88/01/11 SP POWER AMPLIFIER "ESE" PL 1.725.275.00 PAGE 2

IND.	POS.NO.	PART NO.	VALUE	SPECIFICATIONS / EQUIVALENT	MANUF.
MP...	014	1.725.270.03	3 pcs	foam rubber	
P...	001	54.01.0221	12 pole	CIS	
P...	002	54.02.0320			
Q...	001	50.03.0436	BC 237B	NPN	Sie
Q...	002	50.03.0436	BC 237B	NPN	Ph
Q...	004	50.03.0553	BF 422	NPN	Vceo>160V
Q...	005	1.010.039.50	BC 550C	NPN	Matched with Q6
Q...	006	1.010.039.50	BC 550C	NPN	Matched with Q5
Q...	007	50.03.0553	BF 422	NPN	Vceo>160V
Q...	008	1.010.038.50	BC 560C	PNP	Matched with Q9
Q...	009	1.010.038.50	BC 560C	PNP	Matched with Q8
Q...	010	50.03.0627	BF 423	PNP	Vceo>160V
Q...	011	50.03.0627	BF 423	PNP	Vceo>150V
Q...	012	50.03.0553	BF 422	NPN	Vceo>160V
Q...	013	50.03.0627	BF 423	PNP	Vceo>160V
Q...	014	50.03.0801	2SA968	PNP	Vceo>160V+>70
Q...	015	50.03.0776	2SC2238	NPN	Vceo>160V+>70
Q...	016	50.03.0497	BC 550	NPN	Sie
Q...	017	50.03.0776	2SC2238	NPN	Vceo>160V+>70
Q...	018	50.03.0801	2SA968	PNP	Vceo>160V+>70
Q...	019	50.03.0776	2SC2238	NPN	Vceo>160V+>70
Q...	020	50.03.0801	2SA968	PNP	Vceo>160V+>70
Q...	021	50.03.0776	2SC2238	NPN	Vceo>120V+>70
Q...	022	50.03.0801	2SA968	PNP	Vceo>120V+>70
Q...	023	50.03.0517	2SC3012	NPN	NEC
Q...	024	50.03.0517	2SC3012	NPN	NEC
Q...	026	50.03.0517	2SC3012	NPN	NEC
Q...	027	50.03.0518	2SA1232	PNP	NEC
Q...	028	50.03.0518	2SA1232	PNP	NEC
Q...	030	50.03.0518	2SA1232	PNP	NEC
Q...	031	50.03.0497	BC 550	NPN	Sie
Q...	032	50.03.0496	BC 560	PNP	Sie
Q...	033	50.03.0627	BF 423	PNP	Ph
Q...	034	50.03.0551	BC 639	NPN	Vceo>80V
Q...	035	50.03.0801	2SA968	PNP	Vceo>120V+>70

STUDER (00) 88/01/11 SP POWER AMPLIFIER "ESE" PL 1.725.275.00 PAGE 3

