



# Technical Manual

# CD MULTIDISC CHANGER RCC-1055

### Table of Contents

Specification.....	1	PCB Assembly .....	15
Appearance .....	2	Schematic Diagram.....	16~18
Parts List .....	4~7		
Disassembly .....	8~10		
Adjustment.....	11		
Case Outlines.....	12~13		
Wiring Diagram .....	14		

### Specification

<b>Frequency Response (0.5dB)</b>	20-20,000 Hz
<b>Signal to Noise Ratio</b>	>100 dB
<b>Total Harmonic Distortion + Noise</b>	0.0045% @ 1kHz
<b>Intermodulation Distortion</b>	0.0045% @ 1kHz
<b>Dynamic Range</b>	>96 dB
<b>Channel Separation</b>	>98 dB @ 1kHz
<b>Channel Balance</b>	± 0.5 dB
<b>Phase Linearity</b>	± 0.5 degree
<b>Speed Accuracy, Wow &amp; Flutter</b>	Quartz Crystal Precision
<b>Digital to Analog Converter</b>	18 bit equivalent, multi-level Delta-Sigma DAC with 8x oversampling digital filter and HDCD
<b>Maximum Audio Line Output/Impedance</b>	2 Volts/100 Ohms
<b>Digital Output Level (coax)/Impedance</b>	0.5 Volt, Peak to Peak/75 Ohms
<b>Power Requirements</b>	
<b>USA Version</b>	115 Volts, 60 Hz,
<b>European Version</b>	230 Volts, 50 Hz,
<b>Power Consumption</b>	15 Watts
<b>Dimensions (W x H x D)</b>	432 x 121 x 410 mm 17 x 4 <sup>3</sup> / <sub>4</sub> x 16 <sup>1</sup> / <sub>8</sub> inches
<b>Panel Height</b>	109 mm / 4 <sup>9</sup> / <sub>32</sub> inches
<b>Weight (net)</b>	7.8 kg, 17.2 lb.

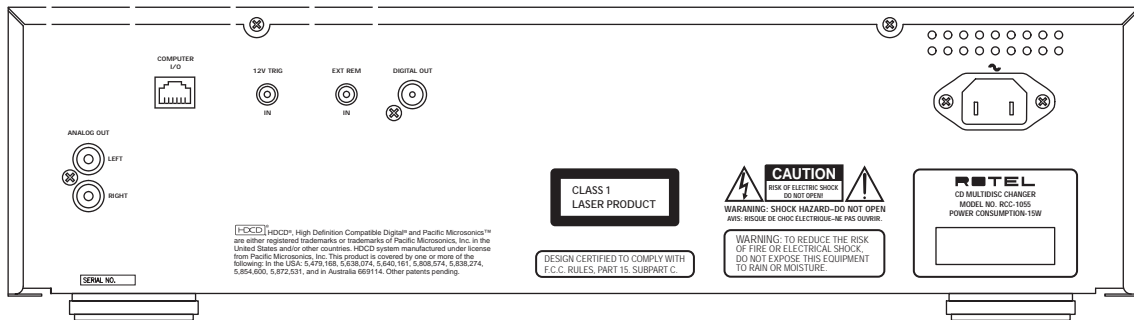
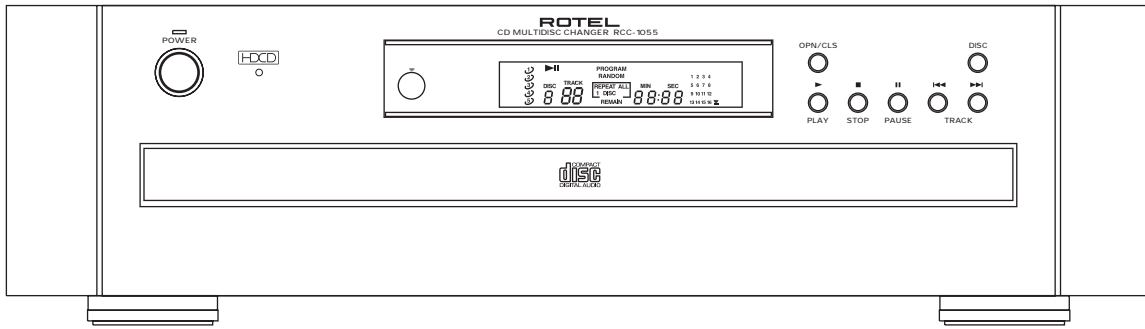
## THE ROTEL CO., LTD

BUNZAN-SHINSEN-BLD. 4F 10-10 SHINSEN-CHO, SHIBUYA-KU,  
TOKYO 150-0045, JAPAN

Serial. NO.  
2401001 - 2402000

# Appearance

RCC-1055



SYMBOL	PARTS NO.	DESCRIPTION
<b>AUDIO PCB</b>		
	704-RCC1055-4046	AUDIO PCB ASS'Y
JK01	420-RCC955A-089	2P PIN JACK
CON102	404-KMD1500-608	2P SOCKET B2B-XH-A
CON901	404-RCC955A-707	3P SOCKET PITCH3.96mm
CN101 TO CN105	404-RCC1055-1570	8P CONNECTOR WIRE
CON101	404-RCC1055-1569	8P SOCKET
C115,116,119,120	413-RCC955A-364	CAPACITOR 160V1000pF
C102,104,106,109	413-RCC955A-365	LAYER CAPACITOR 50V473K
C117,118	413-RCC955A-363	POLYSTYLEN CAPACITOR 160V560pF
R905	412-3113-087	CARBON FILM RESISTOR 1/4W 100K $\Omega$
R129,130	412-D396-135	CARBON FILM RESISTOR 1/6W 1.5K $\Omega$
R903	412-3113-084	CARBON FILM RESISTOR 1/4W 10K $\Omega$
R127	412-3113-083	CARBON FILM RESISTOR 1/4W 15K $\Omega$
R901	412-3113-088	CARBON FILM RESISTOR 1/4W 22K $\Omega$
R907	412-3113-059	CARBON FILM RESISTOR 1/6W 22K $\Omega$
R902	412-RCC955A-380	CARBON FILM RESISTOR 1/4W 3.3K $\Omega$
R128	412-DV300-285	CARBON FILM RESISTOR 1/4W 330 $\Omega$
R904,906	412-3113-092	CARBON FILM RESISTOR 1/4W 56K $\Omega$
R908	412-PMSE1-278	CARBON FILM RESISTOR 1/4W 820 $\Omega$
C123,901-904,907,908,910,914	413-3113-028	CERAMIC CAPACITOR 0.01uF
C919	413-1430-071	CERAMIC CAPACITOR 1000pF
C920	413-PMSE1-258	CERAMIC CAPACITOR 100pF
L101	415-RCC955A-093	MICRO INDUCTOR 4.7uH
Q906	416-1330-020	DIGITAL TRANSISTOR 2SC4120-TS
D901-906	414-RCC955A-074	DIODE 1N4003 200V 1A
C101,121,122,125-128,911-913	413-RCC955A-361	ELECTROLYTIC CAPACITOR 25V100uF
C918	413-HS100-180	ELECTROLYTIC CAPACITOR 25V100uF
C909	413-3113-049	ELECTROLYTIC CAPACITOR 50V1uF
C111,112	413-RCC1055-791	ELECTROLYTIC CAPACITOR 50V4.7uF
C905,906	413-SPPW3-239	ELECTROLYTIC CAPACITOR 35V4700uF
C103,105,107,108,110	413-RCC955A-359	ELECTROLYTIC CAPACITOR 25V47uF
IC901	417-KC730-123	IC (REGULATOR +5V)
IC902	417-DV330-216	IC (REGULATOR +15V)
IC904	417-RCC955A-291	IC (REGULATOR -15V)
IC103,104	417-RCC955A-293	IC OPEAMP OP275GP (8PIN)
IC101	417-RCC1055-600	IC DAC PCM1732, SOP-28
R109	412-RCC955A-381	METAL FILM RESISTOR 1/4W 22 $\Omega$
R909	412-RCC1055-753	MOF RESISTOR 1W 56 $\Omega$
L102-104	415-RCC955A-094	MICRO INDUCTOR 33uH
C113,114	413-RCC1055-792	POLYSTYRENE CAPACITOR 160V100pF
RY901	415-RCC955A-095	RELAY A24W-K
R123,124	412-RCC955A-387	METAL FILM RESISTOR 1/4W 560K $\Omega$
R119,120	412-RCC1055-718	METAL FILM RESISTOR 1/4W 1.2K $\Omega$
R113,114	412-RCC1055-717	METAL FILM RESISTOR 1/4W 100K $\Omega$
R101-103,125,126	412-RCC955A-382	METAL FILM RESISTOR 1/4W 100R
R115,116	412-RCC955A-386	METAL FILM RESISTOR 1/4W 12K $\Omega$
R121,122	412-RCC1055-716	METAL FILM RESISTOR 1/4W 2.7K $\Omega$
R117,118	412-RCC1055-715	METAL FILM RESISTOR 1/4W 3.3K $\Omega$
R111,112	412-RCC955A-383	METAL FILM RESISTOR 1/4W 470R
D908	414-2002-002	DIODE 1N4148
Q904	416-3113-008	TRANSISTOR 2SA933SR
Q901-903,905	416-3113-007	TRANSISTOR 2SC1740R
D907	414-HT8015-024	ZENER DIODE 1/2W 6.21V
<b>S E R V O P C B</b>		
	704-RCC1055-4044	SERVO PCB ASS'Y
CN204	404-DCM270X-793	27P FFC SOCKET
CN102	404-RCC955A-707	3P SOCKET PITCH3.96mm
CN205	404-DCM270E3-878	4P SOCKET S4B-PH-K
CN103	404-SPPW3-513	5P SOCKET PITCH2.5mm

SYMBOL	PARTS NO.	DESCRIPTION
CN104	404-90V1-101	6P SOCKET S6B-PH-K-S
CN201	404-KMD280-277	7P SOCKET
CN105	404-RCC1055-1569	8P SOCKET
CN202	404-501-085	BASE 8P
R262	412-KC220-132	CARBON FILM RESISTOR 1/6W 10 $\Omega$
R269,270	412-3113-060	CARBON FILM RESISTOR 1/6W 100 $\Omega$
R264	412-3113-068	CARBON FILM RESISTOR 1/6W 10K $\Omega$
R224,229,230	412-3113-053	CARBON FILM RESISTOR 1/6W 15K $\Omega$
R261	412-3113-078	CARBON FILM RESISTOR 1/6W 1K $\Omega$
R134	412-HTV8033-5020	CARBON FILM RESISTOR 1/4W 2.2 $\Omega$
R135	412-3113-082	CARBON FILM RESISTOR 1/4W 2.2K $\Omega$
R163-165,172	412-3113-058	CARBON FILM RESISTOR 1/6W 220 $\Omega$
R219,231	412-3113-059	CARBON FILM RESISTOR 1/6W 22K $\Omega$
R159	412-HDJ7000-377	CARBON FILM RESISTOR 1/6W 27 $\Omega$
R136	412-3113-055	CARBON FILM RESISTOR 1/6W 4.7K $\Omega$
R253	412-3113-063	CARBON FILM RESISTOR 1/6W 47K $\Omega$
R236-239	412-3113-069	CARBON FILM RESISTOR 1/6W 6.8K $\Omega$
R196	412-KCG220-197	CARBON FILM RESISTOR 1/6W 75 $\Omega$
C105,106,120,127	413-DV330-312	CHIP CAPACITOR 0.01uF 0805
C180,181,214	413-DV330-312	CHIP CAPACITOR 0.01uF 0805
C119,126,128,149	413-DV330-321	CHIP CAPACITOR 0.033uF 0805
C108,122,134	413-HDJ9500-458	CHIP CAPACITOR 0.047uF 0805
C112,114-116	413-DV330-313	CHIP CAPACITOR 0.1uF 0805
C146,148,157,170	413-DV330-313	CHIP CAPACITOR 0.1uF 0805
C211,217,220	413-DV330-313	CHIP CAPACITOR 0.1uF 0805
C104,221	413-DV330-311	CHIP CAPACITOR 1000pF 0805
C121,153	413-DV330-310	CHIP CAPACITOR 100pF 0805
C218,219	413-DV330-326	CHIP CAPACITOR 12pF 0805
C135	413-PRODJ2-465	CHIP CAPACITOR 1500pF 0805
C185	413-HV3500K-353	CHIP CAPACITOR 150pF 0805
C117	413-STR880-619	CHIP CAPACITOR 180pF 0805
C131,143,144	413-DV330-315	CHIP CAPACITOR 20pF 0805
C107,113	413-DV330-316	CHIP CAPACITOR 2200pF 0805
C138	413-AMC110D-5104	CHIP CAPACITOR 220pF 0805
C230,231	413-CDN88-080	CHIP CAPACITOR 22pF 0805
C132	413-DV330-319	CHIP CAPACITOR 2700pF 0805
C130	413-HDJ2000-613	CHIP CAPACITOR 2pF 0805
C109	413-DV330-323	CHIP CAPACITOR 4700pF 0805
C223	413-PRODJ2-464	CHIP CAPACITOR 470pF 0805
C187	413-AMC110D-5094	CHIP CAPACITOR 47pF 0805
C224	413-RCC1055-697	CHIP CAPACITOR 56pF 0603
R133,160	412-HV3500K-367	CHIP RESISTOR 1/8W 0 $\Omega$ 0805
R118	412-AMC110D-5061	CHIP RESISTOR 1/8W 1.8K $\Omega$ 0805
R102	412-DV330-344	CHIP RESISTOR 1/8W 10 $\Omega$ 0805
R254,263	412-DV330-304	CHIP RESISTOR 1/8W 100 $\Omega$ 0805
R103,111-113,132	412-DV330-307	CHIP RESISTOR 1/8W 100K $\Omega$ 0805
R129,131,137,139	412-DV330-306	CHIP RESISTOR 1/8W 10K $\Omega$ 0805
R265,266,268	412-DV330-306	CHIP RESISTOR 1/8W 10K $\Omega$ 0805
R126	412-DV330-310	CHIP RESISTOR 1/8W 120K $\Omega$ 0805
R138	412-DV330-330	CHIP RESISTOR 1/8W 12K $\Omega$ 0805
R114	412-AMC110D-5079	CHIP RESISTOR 1/8W 150K $\Omega$ 0805
R223,233,234	412-DV330-331	CHIP RESISTOR 1/8W 15K $\Omega$ 0805
R106	412-CDMIX2-506	CHIP RESISTOR 1/8W 180K $\Omega$ 0805
R117,227,228	412-AMC110D-5057	CHIP RESISTOR 1/8W 18K $\Omega$ 0805
R143,168	412-DV330-305	CHIP RESISTOR 1/8W 1K $\Omega$ 0805
R130,240	412-DV330-308	CHIP RESISTOR 1/8W 1M $\Omega$ 0805
R104	412-DV330-313	CHIP RESISTOR 1/8W 2.2K $\Omega$ 0805
R169-171	412-DV330-333	CHIP RESISTOR 1/8W 220 $\Omega$ 0805
R220,225,226	412-DV330-314	CHIP RESISTOR 1/8W 22K $\Omega$ 0805
R221	412-CDN88-014	CHIP RESISTOR 1/8W 270 $\Omega$ 0805
R105	412-DV330-315	CHIP RESISTOR 1/8W 27K $\Omega$ 0805
R128,140	412-DV330-317	CHIP RESISTOR 1/8W 3.3K $\Omega$ 0805

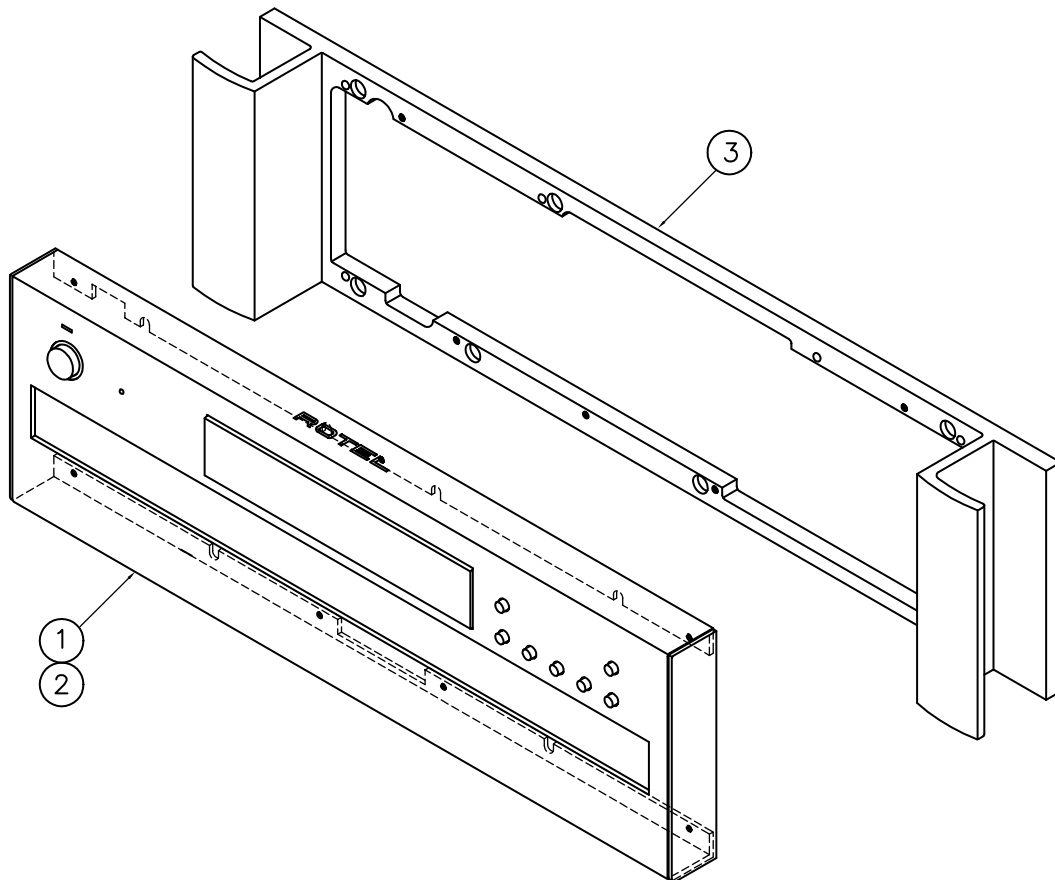
SYMBOL	PARTS NO.	DESCRIPTION
R115	412-CDN88-500	CHIP RESISTOR 1/8W 330K $\Omega$ 0805
R158	412-DV330-320	CHIP RESISTOR 1/8W 4.7K $\Omega$ 0805
R116	412-QMX2-120	CHIP RESISTOR 1/8W 470K $\Omega$ 0805
R107-110,123	412-DV330-321	CHIP RESISTOR 1/8W 47K $\Omega$ 0805
R141	412-CDMIX2-507	CHIP RESISTOR 1/8W 510K $\Omega$ 0805
R121	412-DV330-337	CHIP RESISTOR 1/8W 56K $\Omega$ 0805
R127	412-HDJ2650-102	CHIP RESISTOR 1/8W 6.8K $\Omega$ 0805
R260	412-DV330-323	CHIP RESISTOR 1/8W 680 $\Omega$ 0805
R119	412-CDN88-024	CHIP RESISTOR 1/8W 680K $\Omega$ 0805
R125	412-DV330-325	CHIP RESISTOR 1/8W 8.2K $\Omega$ 0805
R120,122,124	412-STR880-480	CHIP RESISTOR 1/8W 82K $\Omega$ 0805
R101	412-CD3100-400	CHIP RESISTOR 1/8W 91 $\Omega$ 0805
L105	415-RCC955A-091	DIGITAL OUT COIL(P-7GB)
X201	427-DV300-5017	CRYSTAL 8MHZ
X102	427-KMD3500-047	CRYSTAL 12MHZ
X101	427-KC710-019	CRYSTAL 16.9344MHZ
Q106	416-1330-020	DIGITAL TRANSISTOR 2SC4120-TS
D111-114	414-DJ2500-110	DIODE 1N4001 5V 1A
D105	414-DV300-5014	DIODE 1N4002 100V 1A
JK101	420-RCC1055-156	1P JACK DIGITAL OUT
IC103	417-HV3288K-208	IC MOTOR DRIVE BA6397FP
C140	413-KT350-093	ELECTROLYTIC CAPACITOR 50V0.47uF
C102,103,111,124	413-3113-046	ELECTROLYTIC CAPACITOR 10V100uF
C156,182,190	413-3113-046	ELECTROLYTIC CAPACITOR 10V100uF
C212	413-PXE90-109	ELECTROLYTIC CAPACITOR 16V100uF
C178	413-HMD5000-356	ELECTROLYTIC CAPACITOR 35V100uF
C177	413-HC1421FR-277	ELECTROLYTIC CAPACITOR 50V100uF
C123,232	413-3113-052	ELECTROLYTIC CAPACITOR 25V10uF
C179	413-HC1421FR-227	ELECTROLYTIC CAPACITOR 35V10uF
C234-237	413-3113-049	ELECTROLYTIC CAPACITOR 50V1uF
C147,176	413-KC220-119	ELECTROLYTIC CAPACITOR 10V220uF
C174	413-HDJ200-230	ELECTROLYTIC CAPACITOR 16V3300uF
C118,215	413-3113-050	ELECTROLYTIC CAPACITOR 50V4.7uF
JK202	420-RCC1055-155	3.5 $\Phi$ MINI JACK
IC104 SOCKET	404-HDJ7000-703	IC SOCKET (W78E52B-24)
IC204 SOCKET	404-DJ2500-791	IC SOCKET (P87LPC764BN)
IC105	417-DCM370E3-378	IC(74HC04DT)
IC1	417-HMD5000-282	ICREGULATOR BA08T
IC101	417-KMD3500-238	IC RF AMP CXA1782CQ
IC102	417-KMD3500-239	IC DSP CXD2500BQ
IC201*	417-DCM270X-380	IC CONTROL CPU HD6433714D35H (MASKED)
IC2	417-PMSE1-161	IC REGURATOR +5v LM78L05
IC204*	417-RCC1055-590	IC CONTOL CPU P87LPC764BN (OTP)
IC202	417-MP3-430	IC SP232ACP
IC104	704-270E3-1823A	IC SERVO CPU W78E52B-24
L101-104,106	415-MPG100-047	MICRO INDUCTOR 10uH
L107,201,202	415-MPG100-047	MICRO INDUCTOR 10uH
IC203	417-KC220-045	IC (DUAL-BTL) LA6531
JK203	420-HMDV3360K-5014	3.5 $\Phi$ MINI JACK
PC201,202	417-HMD5000-283	PHOTO COUPLER LTV-817
X202	427-RCC1055-107	QUARTZ CRYSTAL(11.059MHZ)
JK201	420-RCC1055-147	RJ45 JACK
P101	412-3113-043	RESISTOR P=5mm (YELLOW)
CN101	404-HV3423K-583	16P FFC SOCKET
RB205	412-KMD280-165	THICK FILM RESISTOR 10K $\Omega$
RB201	412-HV3363K-358	THICK FILM RESISTOR 150K $\Omega$
RB202,203	412-HV3363K-359	THICK FILM RESISTOR 150K $\Omega$
Q101,102	416-3113-008	TRANSISTOR 2SA608VG-SR
Q103,104	416-1360S-017	TRANSISTOR 2SB892T
Q204	416-KC710-038	TRANSISTOR 2SA1346-ES
Q202	416-KE200S-024	TRANSISTOR 2SA1589-TS
Q201	416-HC1421FR-058	TRANSISTOR DTC114ES

SYMBOL	PARTS NO.	DESCRIPTION
Q203	416-3113-010	TRANSISTOR 2SC3400-ES
D204	414-SPPW3-061	ZENER DIODE MTZJ10-B 1/2W
D106	414-DCM270E3-093	ZENER DIODE MTZJ27-D 1/2W
D108	414-KC720-016	ZENER DIODE MTZJ6.8-C 1/2W
<b>CONTROL PCB</b>		
	704-1055B-4063	CONRTOL PCB ASS'Y
CN201	404-DCM270X-793	27P FFC SOCKET (P=1mm)
R207	412-D396-135	CARBON FILM RESISTOR 1/6W 1.5K $\Omega$
R204,208	412-3113-075	CARBON FILM RESISTOR 1/6W 1.8K $\Omega$
R252	412-3113-060	CARBON FILM RESISTOR 1/6W 100 $\Omega$
R201,206	412-3113-048	CARBON FILM RESISTOR 1/6W 2.2K $\Omega$
R210	412-3113-056	CARBON FILM RESISTOR 1/6W 470 $\Omega$
R205	412-3113-044	CARBON FILM RESISTOR 1/6W 5.6K $\Omega$
R202	412-KT346-112	CARBON FILM RESISTOR 1/6W 560 $\Omega$
R203	412-HDJ2100-371	CARBON FILM RESISTOR 1/6W 910 $\Omega$
C220	413-3113-046	ELECTROLYTIC CAPACITOR 10V100uF
IC202	417-RC16-223	IC IR MODULE(PIC-12043TM2)
SW201-205,208,209	403-RCC1055-167	TACT SWITCH(SKHVBL3720)
VFD201	410-HV3421K-102	VFD
<b>POWER PCB</b>		
	704-RCC1055-4047	POWER PCB ASS'Y
F401	422-270X-033	FUSE 250V500mA
L401	415-RCC955A-092	LINE COIL LF-2217
SW401	403-RCC1055-165	POWER SWITCH
C401	413-1431-104	SPARK KILLER 250V4700pF
<b>PHOTO TRANSISTOR PCB</b>		
	704-DCM270X-1797	PHOTO TRANSISTOR PCB ASS'Y
Q01	416-DCM270X-120	PHOTO TRANSISTOR
<b>INFERARED EMITTING PCB</b>		
	704-DCM270X-1798	INFERARED EMITTING PCB ASS'Y
R01	412-3113-076	CARBON FILM RESISTOR 1/6W 390 $\Omega$
D01	410-DCM270X-132	INFRARED EMITTING DIODE
<b>O T H E R S</b>		
	011 FP-557-B	BLACK PANEL ASSY
	011 FP-557-S	SILVER PANEL ASSY
	069 C-4629A01	AC 2P INLET 6102.3100 (WIRING)
	072 C-4621A01	AC CORD SET SJT AWG16/2C for USA
	100-RCC955A-1302	CD DOOR (BLACK)
	100-RCC1055B-1302	CD DOOR (SILVER)
	034 LTL1214A	LED (RED) 2 $\Phi$ LTL1214A
	034 SEL1E24W	LED (BLU) 1X5 SEL1E24W
	034 SEL1124R	LED (RED) 1X5 SEL1124R
	019 4TSH-19#2	PLASTIC FOOT 50 $\Phi$
	411-RCC955A-130	TRANSFORMER
	012 TN2-08A00	TACT BUTTON 15 KEY (BLACK)
	012 TN2-08A01	TACT BUTTON 15 KEY (SILVER)
	012 RV4-09A00	PUSH BUTTON 14 $\Phi$ (BLACK)
	012 RV4-09A01	PUSH BUTTON 14 $\Phi$ (SILVER)
	507-RCC1055A-2318	INSIDE CARTON
		SHIPPING CARTON
	506-RCC1055-302L	STYROL MOULDING (L)
	506-RCC1055-302R	STYROL MOULDING (R)
	082 OMRCC-1055	OWNER'S MANUAL
	701-RCC955A-1953	REMOTE CONTROLLER ASS'Y
	300-RCC1055-930	TOP COVER

# Addendum List for Black and Silver

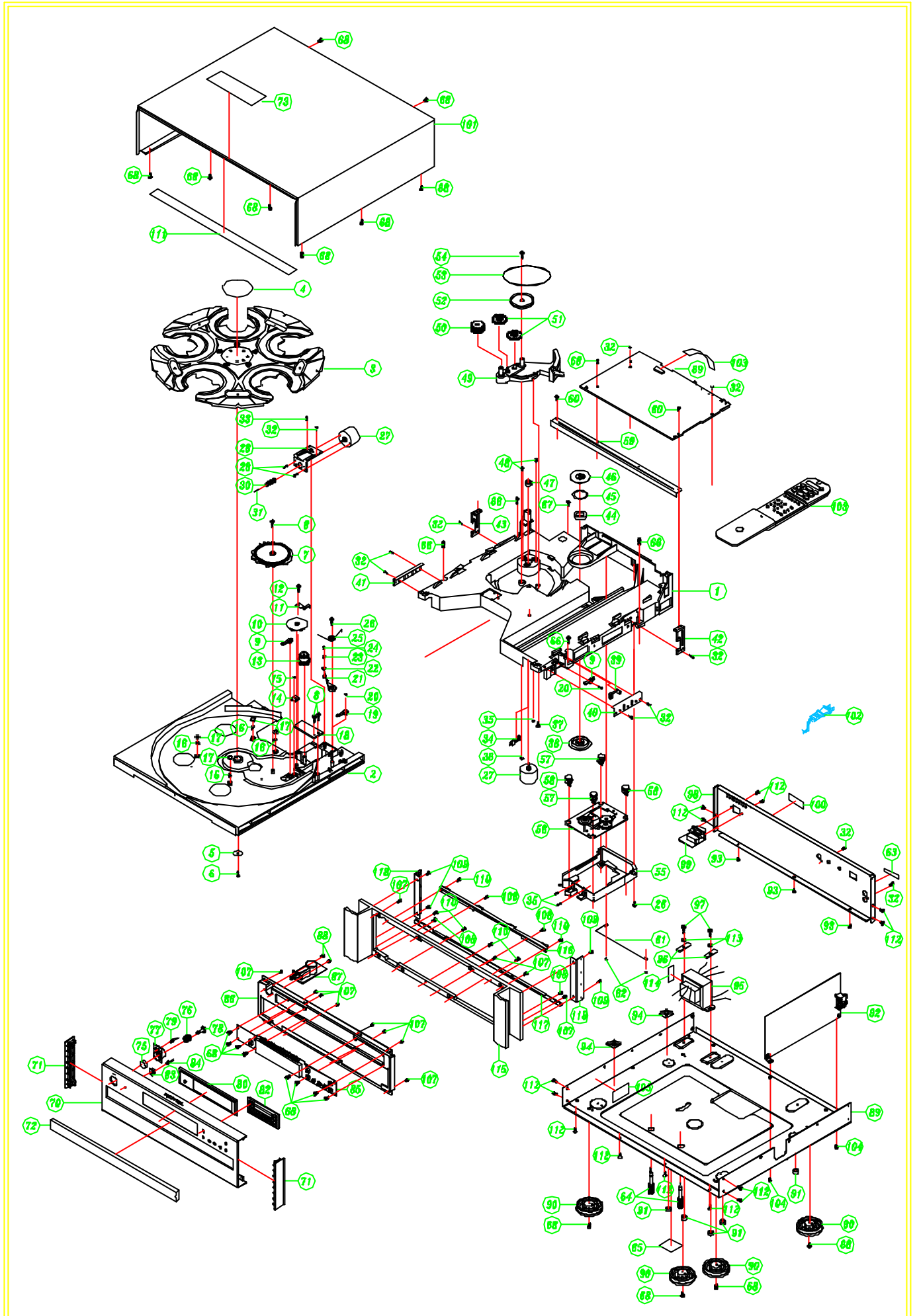
RCC1055

SYMBOL	PARTS	DESCRIPTION
①	011 FP-557-B	BLACK PANEL ASSY
②	011 FP-557-S	SILVER PANEL ASSY
③	011 UM3-01B00	H/S PANEL H109
	012 RV4-09A00	PUSH BUTTON 14F (BLK)
	012 RV4-09A01	PUSH BUTTON 14F (SLV)
	012 TN2-08A00	TACT BUTTON 15KEY(BLK)
	012 TN2-08A01	TACT BUTTON 15KEY(SLV)
	100-RCC955A-1302	PLASTIC DOOR(NO LOGO PRINT) BLK
	100-RCC1055B-1302	PLASTIC DOOR(NO LOGO PRINT) SLV
	034 SEL1124R	LED (RED) 1X5
	034 SEL1E24W	LED (BLU) 1X5



# Disassembly Diagram

RCC-1055





SYMBOL	PARTS NO.	DESCRIPTION
<b>EXPLODED VIEW PART LIST</b>		
1	100-KMD550-1213A	BOTTOM
2	100-KMD550-1214C	BASE
3	100-KMD550-1215A	DISK
4	501-KMD550-1099	LABEL (BLACK, DIAMETER 59.9mm)
5	606-C426-066	FIXED CENTER WASHER
6	602-MK7-131	SCREW (3*10 ZK PTP)
7	100-KMD550-1216	TRANSFER GEAR
8	602-DV300-5023	SCREW (TTP 2.6*7 CAP10 Z)
9	403-DM11A-020	LEAF SWITCH (LSA-119H)
10	100-KMD280-733	MIDDLE GEAR
11	300-KMD280-305	FORWARD GEAR FIXED IRON
12	602-KM300-144	SCREW (2.6*5.5mm)
13	100-KMD280-736A	TRANSFER GEAR
14	704-DCM270X-1798	INFERARED EMITTING PCB ASS'Y
15	602-KMD510-158	SCREW (M2.6*3mm)
16	100-KMD280-729	WHEEL
17	501-KMD550-1146	FIXED SHEET
18	704-DCM270X-1797	PHOTO TRANSISTOR PCB ASS'Y
19	403-KMD550-087	LEAF SWITCH (LSA-1119F)
20	602-SL24F-099	SCREW (2.6*8 PTP)
21	100-KMD550-1217	CORRECTING LEVER
22	604-KM300-057	RUBBER RING
23	100-KM300-516	WHEEL
24	200-KMD550-181	PIN
25	603-KMD550-199	CONNECTING SPRING
26	602-SL24F-097	SCREW (M3*9 PTP)
27	401-MK7-043	MOTOR(MEN-7E2T5,DC12V)
28	300-KMD550-262	MOTOR FIXED PLATE
29	602-KM500-155	SCREW (M2.6*3mm)
30	100-KMD280-731A	SPIRAL GEAR
31	200-KMD280-174	SHAFT
32	602-2002-077	SCREW (3*8mm BTP)
33	602-M100-032	SCREW (DIA 3*10 SHEAP END)
34	403-KMD280-048	LEAF SWITCH (LSA-2127E)
35	602-KMD550-250	SCREW (PTP 3*14)
36	602-KMD550-261	SCREW (PTP 4*8mm)
37	602-SL24F-096	SCREW (M3*7 PTP)
38	100-KMD550-1219	DISK HOLDER
39	100-KMD280-730	SWITCH CONTROL
40	300-KMD280-265RA	STAT R
41	300-KMD550-265L	STAY L
42	300-KMDV280C-264A	R.FIXED PLATE
43	300-KMDV280C-263A	L.FIXED PLATE
44	613-MK7-002	MAGNET
45	612-KT300-007	WASHER (HIMILON)
46	300-KMD550-466	SWIVEL PLATE
47	100-KMD280-728	MOTOR PULLEY
48	602-MK7-134	SCREW (2.6*4 P=0.45)
49	100-KMD550-860D2	GEAR SET
50	100-KMD280-727	B. GEAR
51	100-KMD280-734	S. GEAR
52	100-KMD280-732B	BELT GEAR
53	604-KMD280-094	MOTOR BELT
54	602-KMD510-169	SCREW (M3*8 PTP)
55	100-KMD550-1220B	CD DECK HOLDER
56	704-HV3423K-1441(= OWE KSM-213CCM)	MECHA ASS'Y (KSM-213CCM)
57	604-KMD550-118	CUSHION RUBBER (PRIMARY COLORS)
58	604-KMD550-117	CUSHION RUBBER (RED SILICA GEL)
59	300-KMD550-486	MAIN PCB BRACKET
60	602-KMD550-255	SCREW (2.6*6mm)
61	603-KMD280-200	STEEL WIRE

SYMBOL	PARTS NO.	DESCRIPTION
62	602-B600-056	SCREW (TTP CAP M3*8)
63	501-DV300-1067	SERIES NO. LABEL
64	701-AVD3500K-1668	TRANSPORTATION SCREW ASS'Y
65	501-HT8023K-949	TRANSIT SCREWS LABEL
66	602-DV300B-219	SCREW (TTB M3*12mm)
67	602-HP1010K-174	SCREW (TTB 3*L10)
68	602-HP1010K-175	SCREW (3*L8)
69	704-RCC1055-4044	SERVO PCB ASS'Y
70	300-RCC1055-940 (= 011 FP-557-B)	FRONT PANEL (BLACK)
70	300-RCC1055B-940 (= 011 FP-557-S)	FRONT PANEL (SILVER)
71	100-RCC1055-2035	CAP (PP BLACK)
72	100-RCC955A-1302	CD DOOR (BLACK)
72	100-RCC1055B-1302	CD DOOR (SILVER)
73	501-RCC955A-1284	TRANSPORTATION SCREW LABEL
75	100-RCC1055-2037 (= 012 RV4-09A00)	BUTTON 14Φ (BLACK)
75	100-RCC1055B-2037 (= 012 RV4-09A01)	BUTTON 14Φ (SILVER)
76	603-RCC955-232	SPRING (019 4TR-1988A#2)
77	100-RCC1055-2036	KNOB BASE (BLACK)
77	100-RCC1055B-2036	KNOB BASE (SILVER)
78	100-RCC955-1531	RING FOR KNOB (4TTL-15)
79	410-RCC955A-127 (= 034 SEL1124R)	LED 1X5 RED (SEL1124R)
79	410-RCC1055A-127 (= 034 SEL1E24W)	LED 1X5 BLUE (SEL1E24W)
80	100-RCC955-1333	WINDOW LENS
82	100-RCC1055-2034 (= 012 TN2-08A00)	BUTTON 15 KEY (BLACK)
82	100-RCC1055B-2034 (= 012 TN2-08A01)	BUTTON 15 KEY (SILVER)
83	100-RCC955-1535	LED HOLDER (019 C-4598A00)
84	410-RCC955A-126 (= 034 LTL1214A)	LED 2Φ RED (LTL1214A)
85	704-RCC1055-4045	CONTROL PCB ASS'Y (BLACK)
85	704-1055B-4063	CONTROL PCB ASS'Y (SILVER)
86	703-RCC1055-687	FRONT CHASSIS ASS'Y
87	704-RCC1055-4047	POWER PCB ASS'Y
88	602-RCC955-291	SCREW (M3*6, P=0.5)
89	300-RCC1055-929	BUTTOM BASE
90	100-RCC955-1532 (= 019 4TSH-19#2)	FOOT 50Φ
91	612-HMD5000-065	PROTECTIONMAT
92	704-RCC1055-4046	AUDIO PCB ASS'Y
93	602-KE200-145	SCREW (3*5mm BLACK)
94	504-HDJ7000-032	ADHESIVE BACKED MOUNTS
95	411-RCC955A-130	TRANSFORMER
96	300-DV300B-443	BRACKET TRANSFORMER
97	602-HT8023k-209	SCREW
98	300-RCC1055-932	BACK PANEL
99	420-RCC1055-148	CORD BUSH
100	501-RCC955A-1319	RATING LABEL
101	300-RCC1055-930	TOP COVER
102	409-RCC1055-107 (= 072 C-4629A01)	AC CORD SET SJT AWG16/2C
103	701-RCC955A-1953	REMOTE CONTROLLER ASS'Y
104	602-B300-041	SCREW (3*5mm P=0.5)
105	501-RCC955A-1309	FUSE LABEL
106	406-KMD5000-413	RIBBON WIRE
107	602-RCC1055-416	SCREW (ISO, M3*P0.5*16L, MC)
108	602-SA12-381	SCREW
109	602-RCC1055-418	SCREW (ISO, M4*P0.7*8L, ZS)
110	602-RCC1055-417	SCREW (ISO, M3*P0.5*8L, NI)
111	612-RCC1055-149	SPACER FOR TOP COVER (EVA, BLACK, 380*10*3t)
112	602-RCC1055-422	SCREW (BTO, 3*8L, ZS)
113	606-STR830-141	SPRING
114	501-RCC955A-1324	LABEL FOR TRANSFORMER
115	300-RCC1055-939 (= 011 UM3-01B00)	H/S PANEL
116	300-RCC1055-934	SUPPORT FOR TOP COVER
117	300-RCC1055-933	COMBINE BOARD
118	300-RCC1055-938	FIXED PLATE

# ADJUSTMENT PROCEDURES

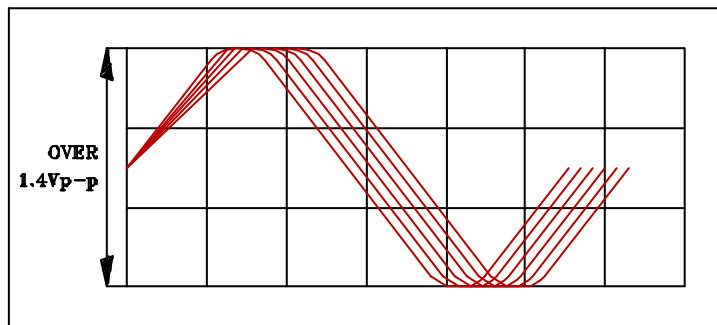
RCC-1055

## REQUIRE EQUIPMENT

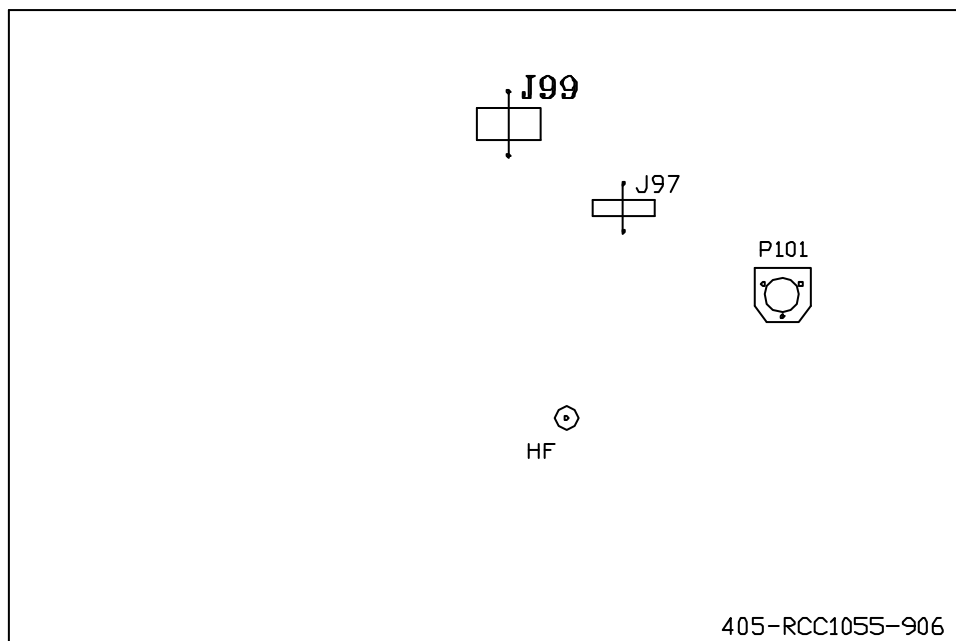
- « OSCILLOSCOPE (DC 20MHZ, DUAL TRACE) ..... 1SET
- « CERAMIC SCREW DRIVER ..... 1SET

## FREQUENCY ADJUSTMENT

1. TURN ON THE POWER OF THE CD PLAYER AND INSERT THE DISC THENSET THE UNIT TO TTHE PLAY MODE.
2. CONNECT THE OSILLOSCOPPE PROBE TO J97 (HF POSITION) AND J99 (DGND).
3. SETUP OSCILLOSCOPE TIME / DIV FOR 0.2US, VOLT / DIV FOR 0.5V / DIV.
4. ADJUST P101 WITH ERAMIC SCREW DRIVER, MAKE VOLTAGE TO MAX (DOn'T LOW 1.4V p-p).

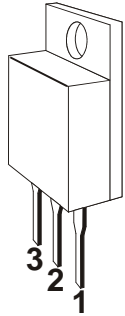


OSCILLOSCOPE MONITOR



405-RCC1055-906

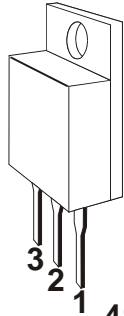
**NJM7815FA**



- 1. OUTPUT
- 2. COMMON
- 3. INPUT

417-DV330-216

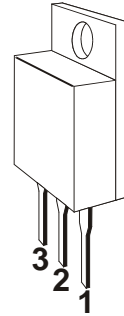
**NJM7915FA**



- 1. OUTPUT
- 2. INPUT
- 3. COMMON

417-RCC955A-291

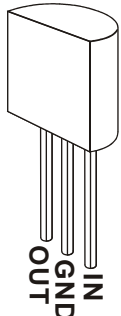
**NJM7800FA**



- 1. OUTPUT
- 2. COMMON
- 3. INPUT

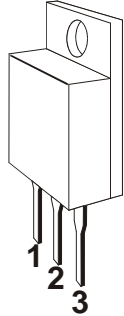
417-KC730-123

**78L05**



417-PMSE1-161

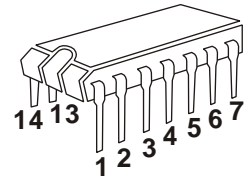
**BA08T**



- 1. Vcc
- 2. GND
- 3. OUT

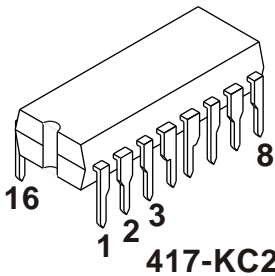
417-HMD5000-282

**74HCU04D**



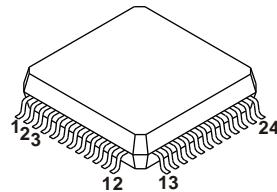
417-DCM370E3-378

**LA6531**



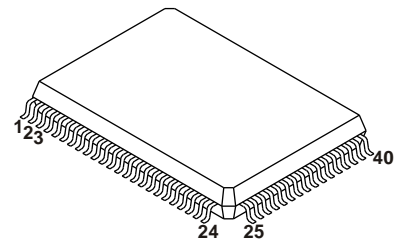
417-KC220-045

**CXA1782CQ**



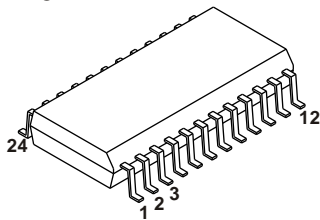
417-KMD3500-238

**CXD2500BQ**



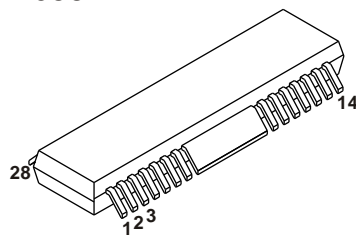
417-KMD3500-239

**UDP6121**



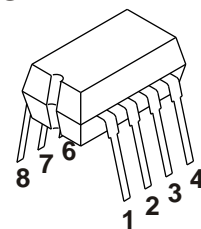
417-RC16-222

**BA6397FP**



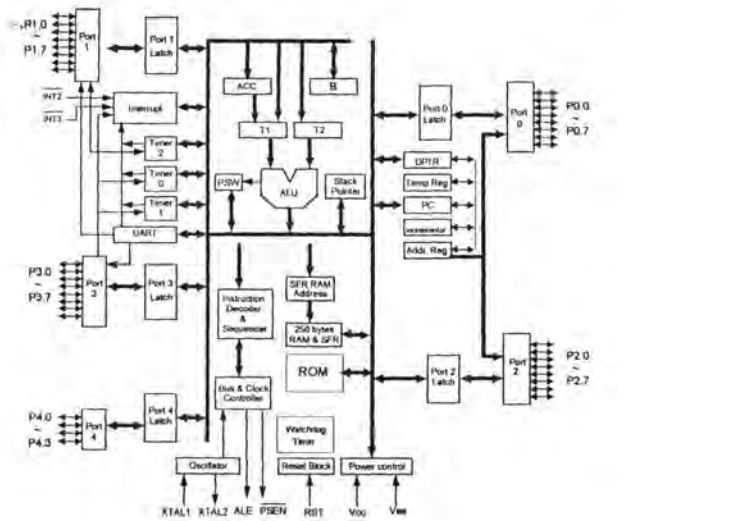
417-HV3288K-208

**OP275GP**

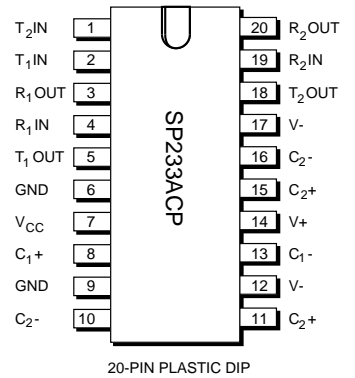


417-RCC955A-293

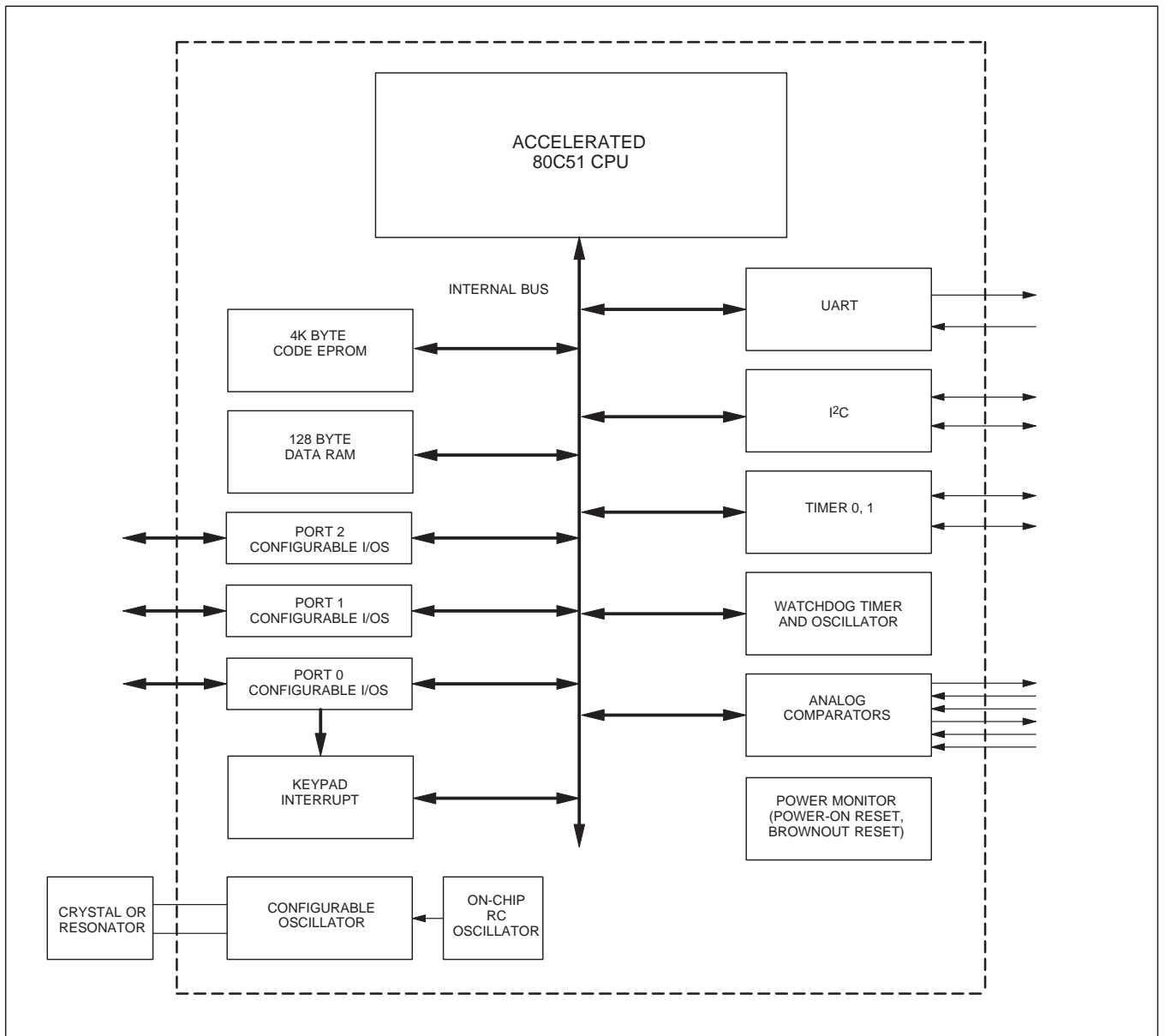
417-HV3288K-225A  
W78E52B



417-MP-430  
SP232ACP

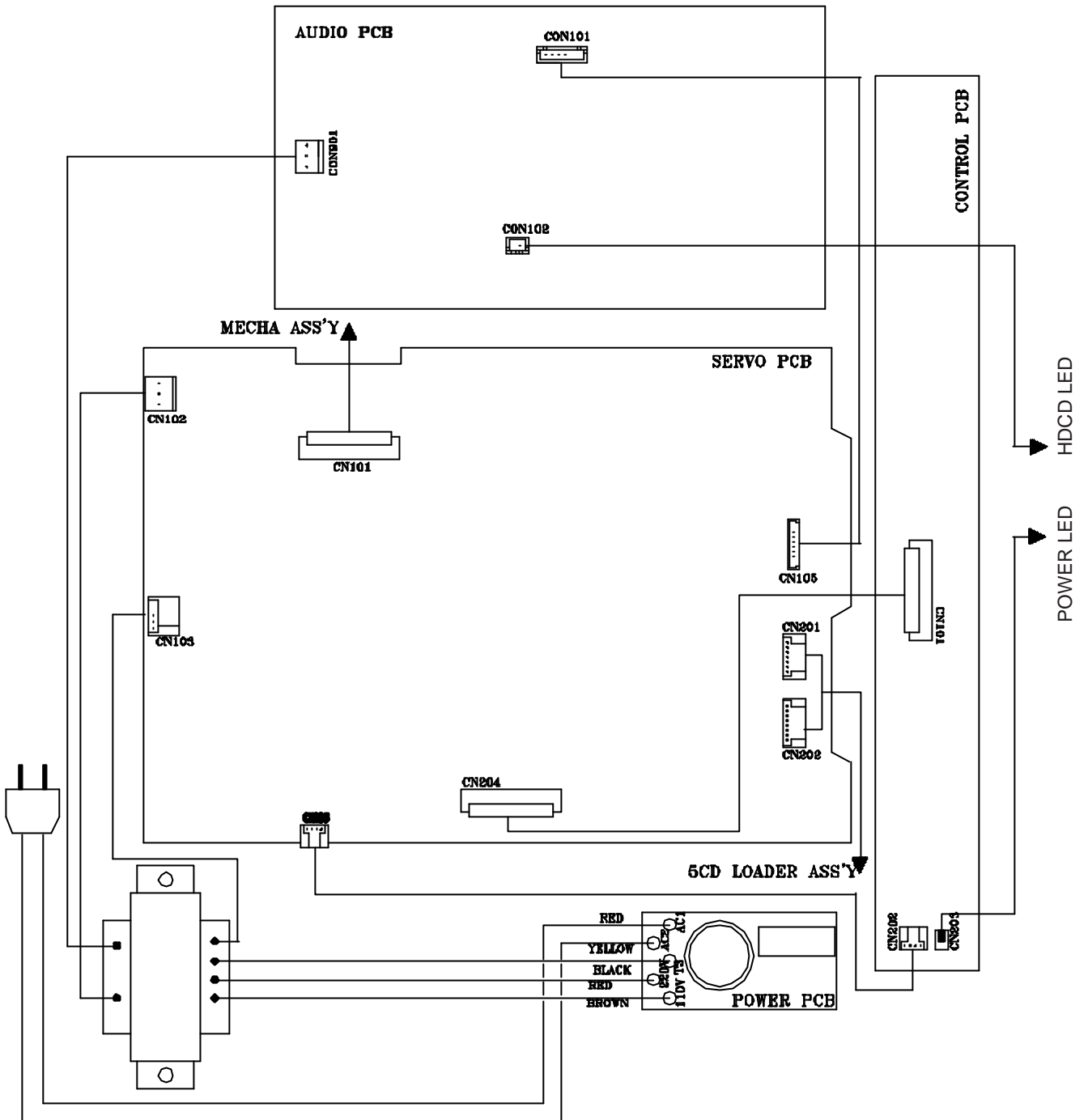


417-RCC1055-590  
P87LPC764BN



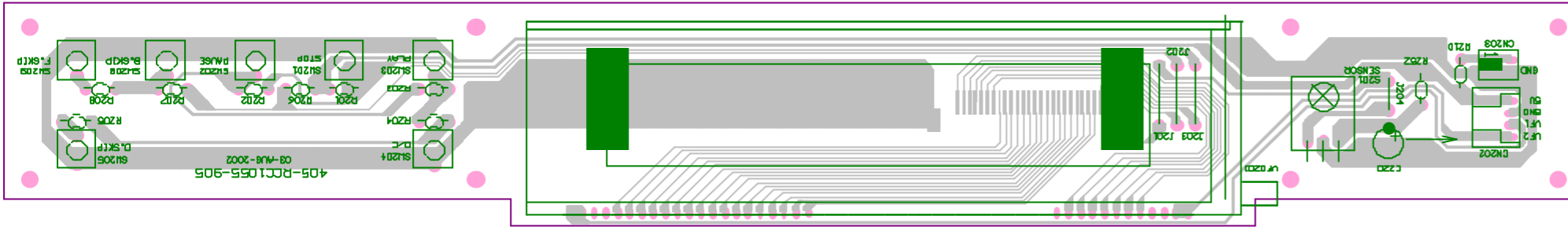
# Wiring Diagram

RCC-1055



# PCB Assembly

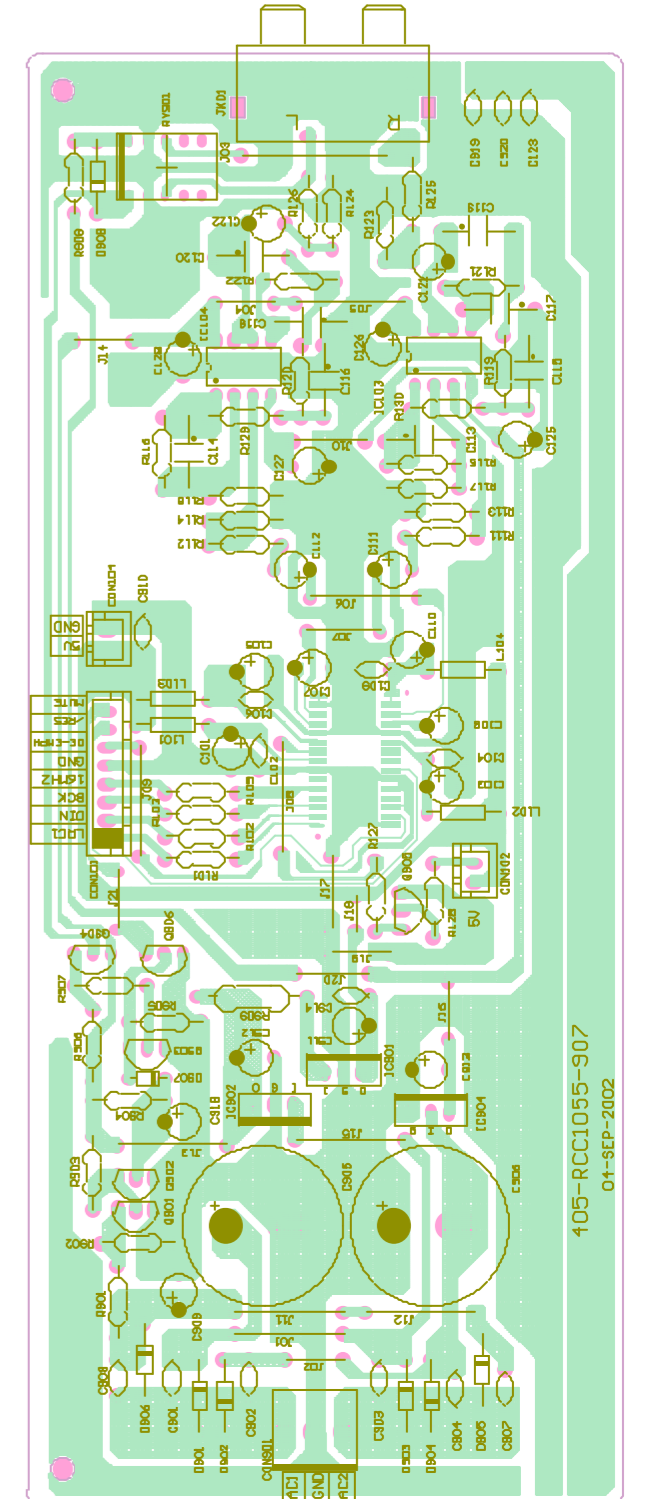
## FRONT PCB 405-RCC1055-905



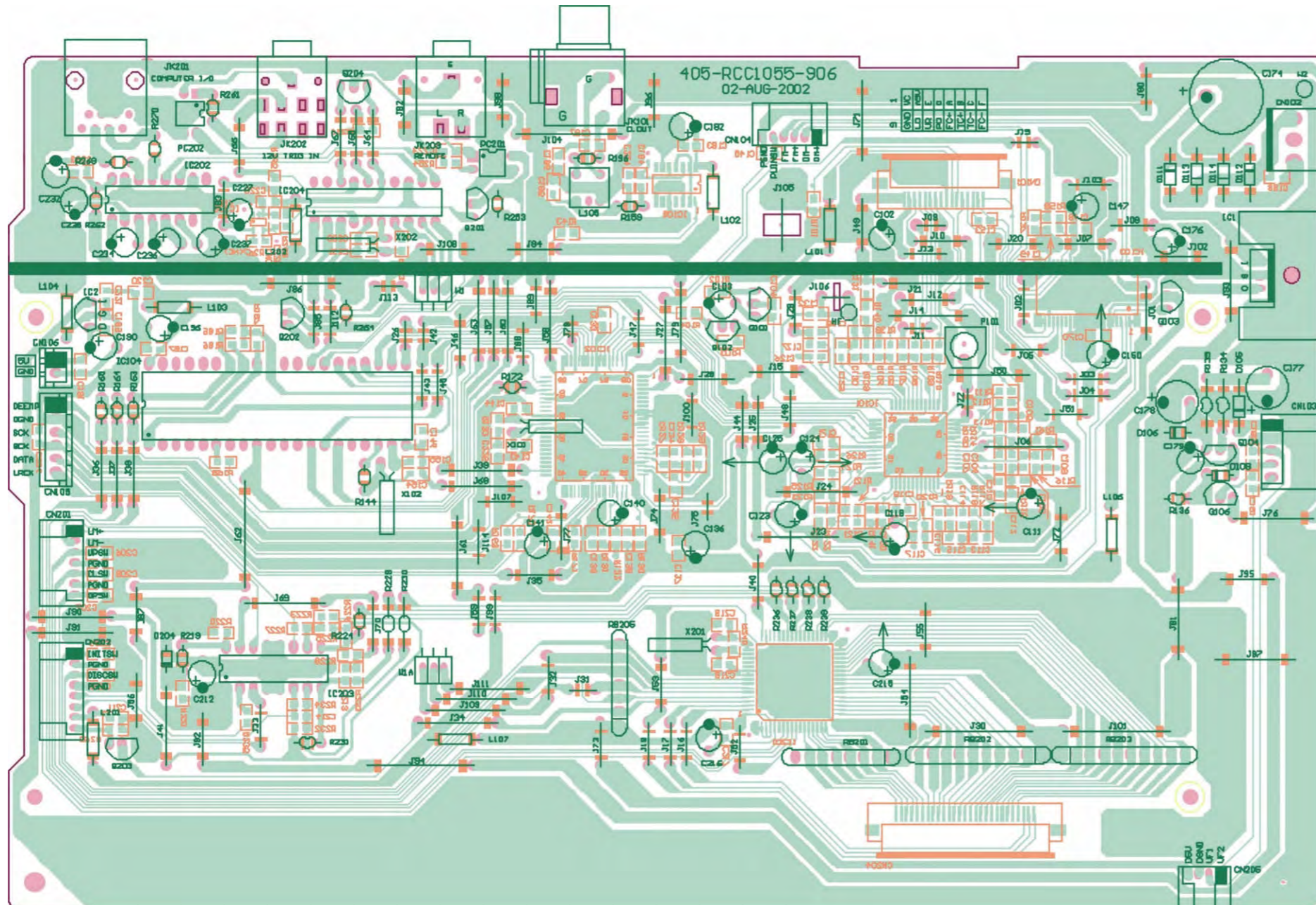
## IR EMMITTING PCB 405-DCM270X-419



## AUDIO PCB 405-RCC1055-907

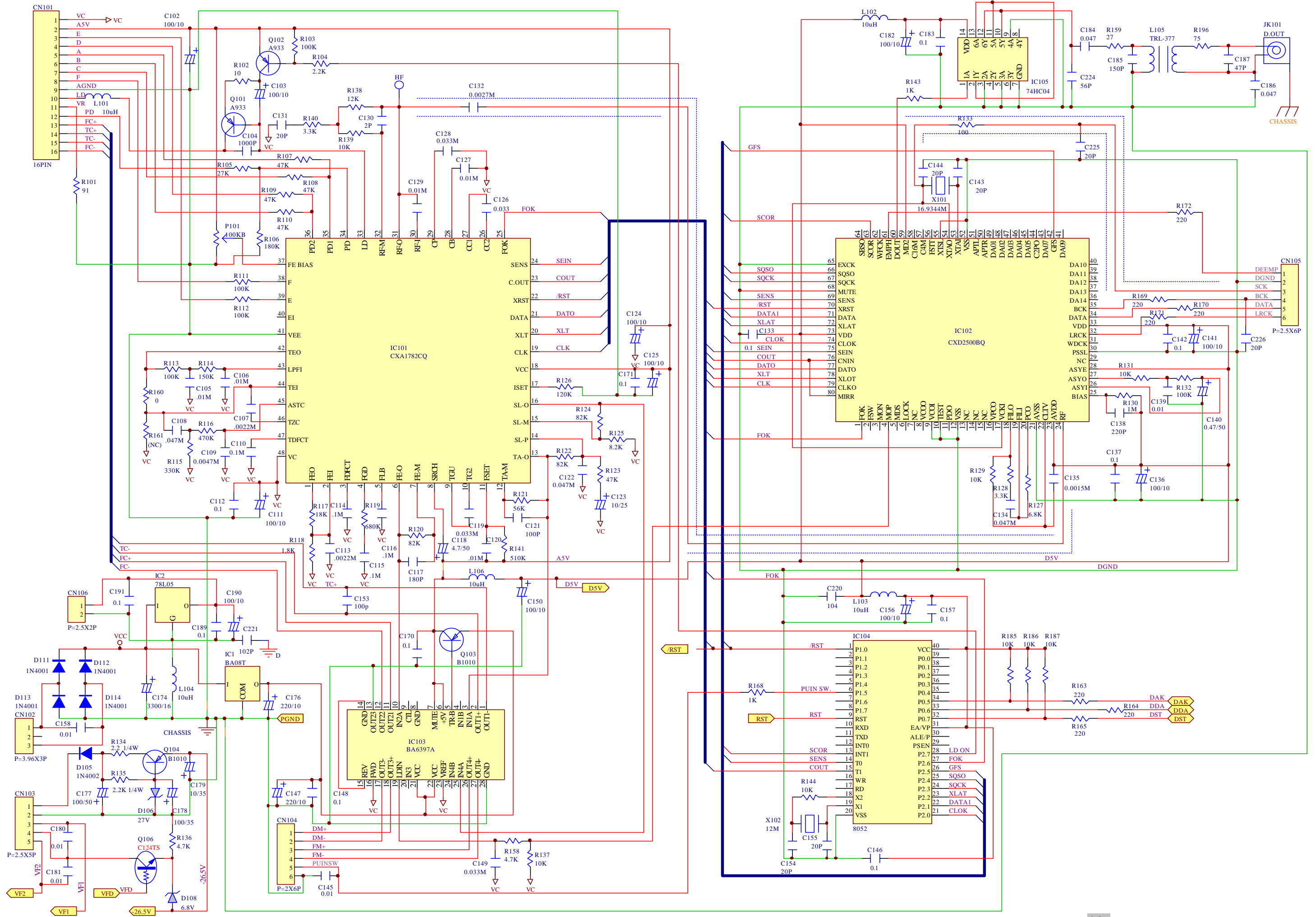


## SERVO PCB 405-RCC1055-906



# Schematic Diagram

## Main (1/2) 405-RCC1055-906

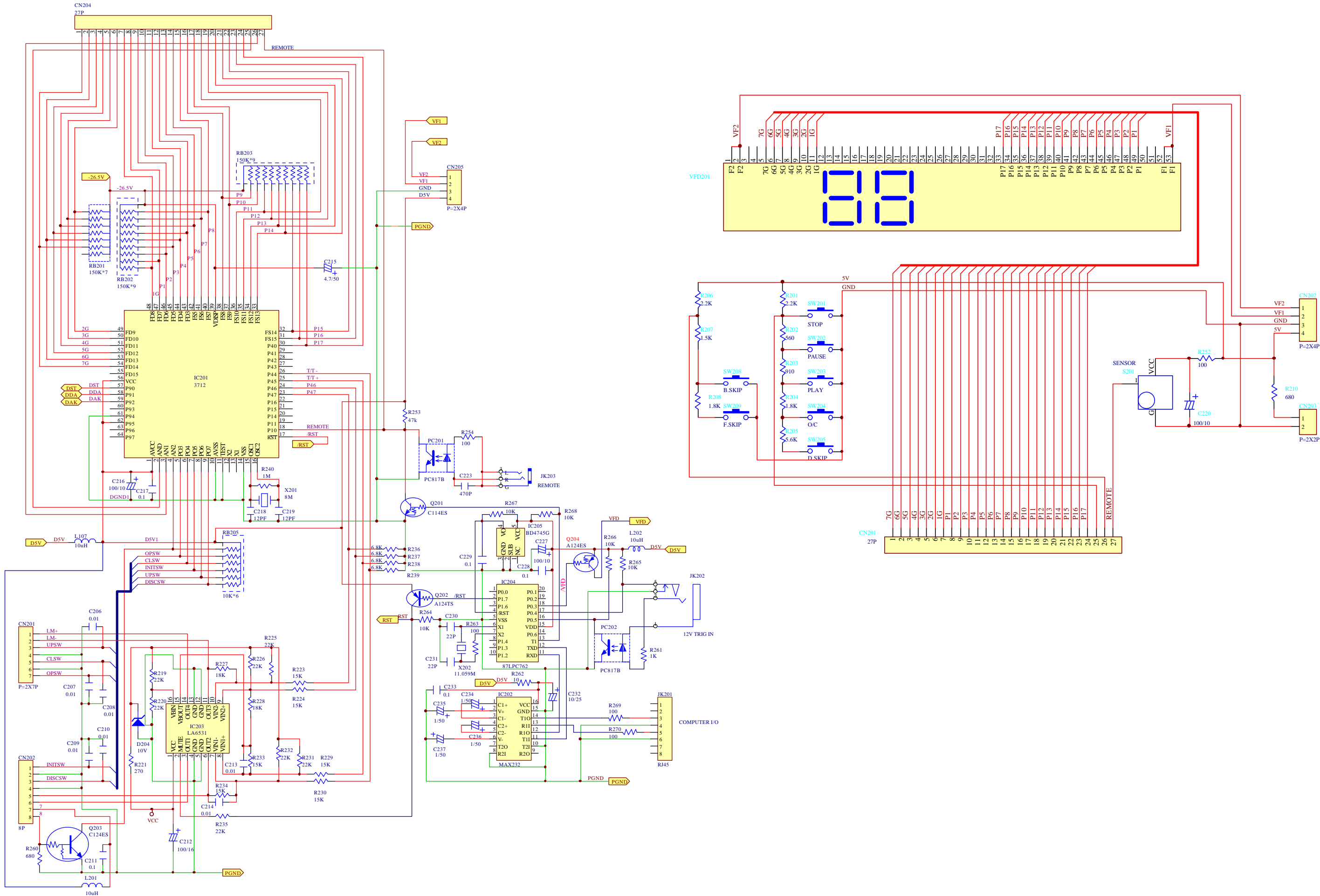




# Schematic Diagram

## Main (2/2) 405-RCC1055-906

## Control 405-RCC1055-905



# Schematic Diagram

# Audio 405-RCC1055-907

