

Technical Manual

CD MULTIDISC CHANGER **RCC955**

Table of Contents

Specification	1
Wiring Diagram	2
Parts List	3
Disassembly Diagram	10
Adjustment Procedures ..	14
PCB Assembly	15
Case Outlines	18
Schematic Diagram	19

Specification

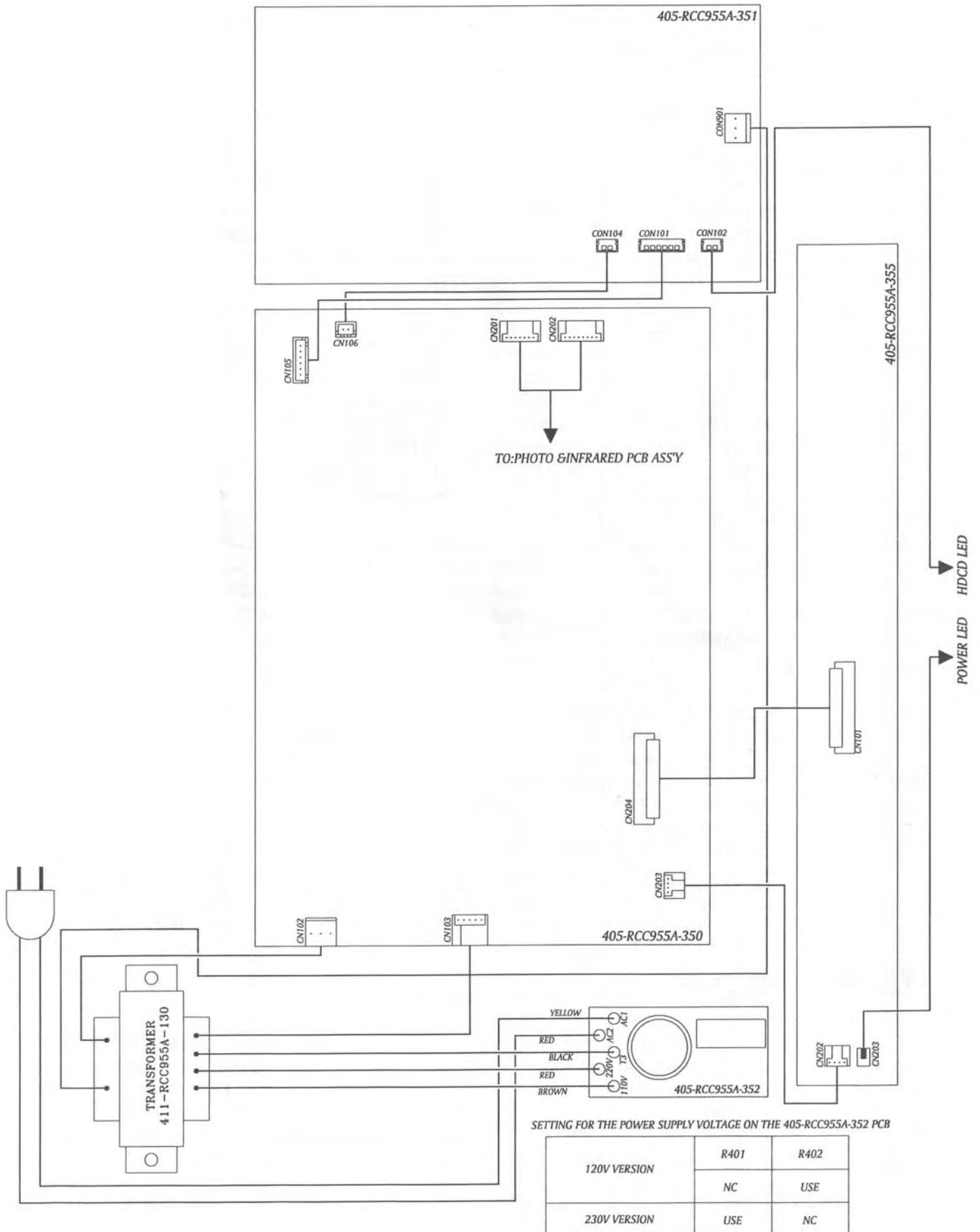
Frequency Response (+0.5dB, -3.0dB)	20-20,000 Hz
Signal to Noise Ratio	96dB
Dynamic Range	93dB
Channel Separation	90dB @ 1kHz
Total Harmonic Distortion + Noise	0.008% @ kHz
Maximum Audio Line Output	2 Volts
Digital Output Level (coax)	0.5 Volt, Peak to Peak
Digital Output Impedance	75 Ohms
Power Requirements	
USA Version	115 Volts, 60 Hz;
European Version	230 Volts, 50 Hz
Power Consumption	.15 Watts
Dimensions (W x H x D)	440 x 125 x 395 mm
	17 ^{5/16} x 4 ^{15/16} x 15 ^{1/2} inches
Weight (net)	6.8 kg, 14.96lb.

THE ROTEL CO., LTD

BUNZAN-SHINSEN-BLD.4F 10-10 SHINSEN-CHO, SHIBUYA-KU,
TOKYO 150-0045, JAPAN

Serial. NO. Beginning

Wiring Diagram



PCB ASSY PART LIST – 1

AUDIO PCB ASS'Y 405-RCC955A-351

SYMBOL	DESCRIPTION	PARTS NO.	Q'TY
	AUDIO PCB ASS'Y	704-RCC955A-2162	1
CN101	6P CONNECTOR WIRE	404-RCC955A-930	1
CN102	2P CONNECTOR WIRE	404-RCC955A-937	1
CN104	2P CONNECTOR WIRE	404-RCC955A-938	1
	AUDIO PCB (BARE)	405-RCC955A-351	1
	BRACKET (L TYPE)	300-HDJ7000-472	3
	16P IC SOCKET	404-DCM370E3-929	1
	SCREW (3*5 P=0.5)	602-B300-041	6
C101	ELECTOR CAPACITOR (1000uF/16V,041 TUVX1C102MPA1TD)	413-RCC955A-358	1
C102	CAPACITOR (473K/50V, 046 T50V473K)	413-RCC955A-365	1
C103	ELECTOR CAPACITOR (47uF/25V,041 25BGF47M)	413-RCC955A-359	1
C104	CAPACITOR (473K/50V, 046 T50V473K)	413-RCC955A-365	1
C105	ELECTOR CAPACITOR (47uF/25V,041 25BGF47M)	413-RCC955A-359	1
C106	CAPACITOR (473K/50V, 046 T50V473K)	413-RCC955A-365	1
C107	ELECTOR CAPACITOR (47uF/25V,041 25BGF47M)	413-RCC955A-359	1
C108	ELECTOR CAPACITOR (47uF/25V,041 25BGF47M)	413-RCC955A-359	1
C109~112	ELECTOR CAPACITOR (100uF/25V,041 TUVX1E101MEA1TA)	413-RCC955A-360	4
C117	PS CAPACITOR (560pF/160V,044 FSC160V561H)	413-RCC955A-363	1
C118	PS CAPACITOR (560pF/160V,044 FSC160V561H)	413-RCC955A-363	1
C119	PS CAPACITOR (1000pF/160V,044 FSC160V102H)	413-RCC955A-364	1
C120	PS CAPACITOR (1000pF/160V,044 FSC160V102H)	413-RCC955A-364	1
C121	ELECTOR CAPACITOR (100uF/25V,041 25BGF100M)	413-RCC955A-361	1
C122	ELECTOR CAPACITOR (100uF/25V,041 25BGF100M)	413-RCC955A-361	1
C123	MYLAR CAPACITOR (0.01uF J 50V)	413-3113-057	1
C125~128	ELECTOR CAPACITOR (100uF/25V,041 25BGF100M)	413-RCC955A-361	4
C901~904	CERAMIC CAPACITOR (0.01uF/50V)	413-3113-028	4
C905	ELECTOR CAPACITOR (4700uF/35V)	413-SPPW3-239	1
C906	ELECTOR CAPACITOR (4700uF/35V)	413-SPPW3-239	1
C907	CERAMIC CAPACITOR (0.01uF/50V)	413-3113-028	1
C908	CERAMIC CAPACITOR (0.01uF/50V)	413-3113-028	1
C909	ELECTOR CAPACITOR (1uF/50V)	413-3113-049	1
C910	ELECTOR CAPACITOR (100uF/25V)	413-HS100-180	1
C911~913	ELECTOR CAPACITOR (100uF/25V,041 25BGF100M)	413-RCC955A-361	3
C914	CERAMIC CAPACITOR (0.01uF/50V)	413-3113-028	1
C917	CERAMIC CAPACITOR (0.01UF)	413-3113-035	1
C918	CERAMIC CAPACITOR (0.01uF/50V)	413-3113-028	1
C919	CERAMIC CAPACITOR (1000P)	413-1430-071	1
C920	CERAMIC CAPACITOR (100P)	413-PMSE1-258	1
CON101	6P CONNECTOR BASE (B6B-XH-A)	404-HV3500K-630	1
CON102	2P CONNECTOR (P=2.5mm)	404-KMD1500-608	1
CON104	2P CONNECTOR (P=2.5mm)	404-KMD1500-608	1
CON901	3P SOCKET (P=3.96mm)	404-RCC955A-707	1
D901~906	DIODE (IN4003)	414-RCC955A-074	6
D907	ZENER DIODE (6.2V,1/2W,MTZ6.2B)	414-HT8015-024	1
D908	SW DIODE (IN4148)	414-2002-002	1
IC101	IC (PMD100, DIP-28, 031 PMD100)	417-RCC955A-389	1
IC102	IC (PCM69AP, DIP-16, 031 PCM69AP)	417-RCC955A-390	1
IC103	IC (OP275GP, 8PIN)	417-RCC955A-293	1
IC104	IC (OP275GP, 8PIN)	417-RCC955A-293	1
IC901	IC 7805	417-KC730-123	1
IC902	IC (NJM7815FA 3PIN)	417-DV330-216	1
IC903	IC (NJM7915FA)	417-RCC955A-291	1
L101	CHOKE COIL (4.7uH)	415-RCC955A-093	1
L102	MICRO INDUCTOR (33UH)	415-RCC955A-094	1
L103	MICRO INDUCTOR (33UH)	415-RCC955A-094	1

PCB ASS'Y PART LIST – 2**AUDIO PCB ASS'Y 405-RCC955A-351**

SYMBOL	DESCRIPTION	PARTS NO.	Q'TY
PJ101	2P PIN JACK (RJ-1078-10-0300A)	420-RCC955A-073	1
Q901~903	TRANSISTOR (2SC1740R)	416-3113-007	3
Q904	TRANSISTOR (2SA933SR OR 2SA608G)	416-3113-008	1
Q905	TRANSISTOR (2SC1740R)	416-3113-007	1
R101~103	RESISTOR (100R, 054 TMF1/4-1000F)	412-RCC955A-382	3
R104~108	CARBON FILM RESISTOR (1K 1/6W)	412-3113-078	5
R109	RESISTOR (22 OHM 1/4W)	412-RCC955A-381	1
R110	RESISTOR (22 OHM 1/4W)	412-RCC955A-381	1
R111	RESISTOR (1.5K OHM, 054 TMF1/4-1501F)	412-RCC955A-384	1
R112	RESISTOR (1.5K OHM, 054 TMF1/4-1501F)	412-RCC955A-384	1
R113	RESISTOR (470R, 054 TMF1/4-4700F)	412-RCC955A-383	1
R114	RESISTOR (470R, 054 TMF1/4-4700F)	412-RCC955A-383	1
R115	RESISTOR (12K OHM, 054 TMF1/4-1202F)	412-RCC955A-386	1
R116	RESISTOR (12K OHM, 054 TMF1/4-1202F)	412-RCC955A-386	1
R119	RESISTOR (2.2K OHM, 054 TMF1/4-2201F)	412-RCC955A-385	1
R120	RESISTOR (2.2K OHM, 054 TMF1/4-2201F)	412-RCC955A-385	1
R121	RESISTOR (2.2K OHM, 054 TMF1/4-2201F)	412-RCC955A-385	1
R122	RESISTOR (2.2K OHM, 054 TMF1/4-2201F)	412-RCC955A-385	1
R123	RESISTOR (560K OHM, 054 TMF1/4-5603F)	412-RCC955A-387	1
R124	RESISTOR (560K OHM, 054 TMF1/4-5603F)	412-RCC955A-387	1
R125	RESISTOR (100R, 054 TMF1/4-1000F)	412-RCC955A-382	1
R126	RESISTOR (100R, 054 TMF1/4-1000F)	412-RCC955A-382	1
R127	CARBON FILM RESISTOR (15K 1/4W)	412-3113-083	1
R128	CARBON FILM RESISTOR (330Ω)	412-DV300-285	1
R901	CARBON FILM RESISTOR (22K OHM J 1/4W)	412-3113-088	1
R902	CARBON FILM RESISTOR (3.3K OHM 1/4W)	412-RCC955A-380	1
R903	CARBON FILM RESISTOR (10K OHM J 1/4W)	412-3113-084	1
R904	CARBON FILM RESISTOR (56K OHM J 1/4W)	412-3113-092	1
R905	CARBON FILM RESISTOR (100K OHM J 1/4W)	412-3113-087	1
R906	CARBON FILM RESISTOR (56K OHM J 1/4W)	412-3113-092	1
R907	CARBON FILM RESISTOR (22K 1/6W)	412-3113-059	1
R908	CARBON FILM RESISTOR (820 OHM J 1/4W)	412-PMSE1-278	1
RY901	RELAY (063 V23106-24)	415-RCC955A-095	1

SERVO PCB ASS'Y 405-RCC955A-350

SYMBOL	DESCRIPTION	PARTS NO.	Q'TY
	SERVO PCB ASS'Y	704-RCC955A-1627	1
	SERVO PCB (BARE)	405-RCC955A-350	1
D105	DIODE (IN4002, BULK)	414-F202-001	1
D111~114	RECTIFIER DIODE (1N4001)	414-PMSE1-035	4
	SCREW (3*8mm BTP)	602-2002-077	2
	HEAT SINK & IC ASS'Y	704-DCM270X-1794	1
IC1	IC(BA08T 3PIN)	417-HMD5000-282	1
	HEAT SINK	425-KMD3500-016A	1
C102	ELECTOR CAPACITOR (100Uf/10V)	413-3113-046	1
C103	ELECTOR CAPACITOR (100Uf/10V)	413-3113-046	1
C104	CERAMIC CAPACITOR (1000P)	413-1430-071	1
C105,106	MYLAR CAPACITOR (0.01Uf J 50V)	413-3113-057	2
C107	MYLAR CAPACITOR (2200P J 50V)	413-3113-059	1
C108	MYLAR CAPACITOR (0.047Uf/50V)	413-KT300-099	1
C109	MYLAR CAPACITOR (4700P J 100V)	413-HT8015-159	1
C110	MYLAR CAPACITOR (0.1Uf J 50V)	413-KT350-089	1
C111	ELECTOR CAPACITOR (100Uf/10V)	413-3113-046	1

PCB ASS'Y PART LIST - 3

SERVO PCB ASS'Y 405-RCC955A-350

SYMBOL	DESCRIPTION	PARTS NO.	Q'TY
C112	CERAMIC CAPACITOR (0.1Uf/25V)	413-3113-035	1
C113	MYLAR CAPACITOR (2200P J 50V)	413-3113-059	1
C114~116	MYLAR CAPACITOR (0.1Uf J 50V)	413-KT350-089	3
C117	CERAMIC CAPACITOR (180Pf/50V K SL)	413-3113-030	1
C118	ELECTOR CAPACITOR (4.7Uf/50V)	413-3113-050	1
C119	MYLAR CAPACITOR (0.033Uf J 50V)	413-KT350-088	1
C120	MYLAR CAPACITOR (0.01Uf J 50V)	413-3113-057	1
C121	CERAMIC CAPACITOR (100Pf/50V K NPO)	413-PMSE1-258	1
C122	MYLAR CAPACITOR (0.047Uf/50V)	413-KT300-099	1
C123	ELECTOR CAPACITOR (10Uf/25V)	413-3113-052	1
C124,125	ELECTOR CAPACITOR (100Uf/10V)	413-3113-046	2
C126	CERAMIC CAPACITOR (0.033Uf/50V K)	413-PMSE1-262	1
C127	MYLAR CAPACITOR (0.01Uf J 50V)	413-3113-057	1
C128	MYLAR CAPACITOR (0.033Uf J 50V)	413-KT350-088	1
C129	MYLAR CAPACITOR (0.01Uf J 50V)	413-3113-057	1
C130	CERAMIC CAPACITOR (2Pf/50V C NPO)	413-KT350-091	1
C131	CERAMIC CAPACITOR (20Pf/50V J NPO)	413-3113-034	1
C132	MYLAR CAPACITOR (0.0027Uf)	413-PXE90-108	1
C133	CERAMIC CAPACITOR (0.1Uf/25V)	413-3113-035	1
C134	MYLAR CAPACITOR (0.047Uf/50V)	413-KT300-099	1
C135	MYLAR CAPACITOR (0.0015Uf 50V)	413-HT7016-219	1
C136	ELECTOR CAPACITOR (100Uf/10V)	413-3113-046	1
C137	CERAMIC CAPACITOR (0.1Uf/25V)	413-3113-035	1
C138	CERAMIC CAPACITOR (220Pf/50V K)	413-3113-032	1
C139	CERAMIC CAPACITOR (0.01Uf/50V)	413-3113-028	1
C140	ELEC. CAPACITOR (0.47Uf/50V)	413-KT350-093	1
C141	ELECTOR CAPACITOR (100Uf/10V)	413-3113-046	1
C142	CERAMIC CAPACITOR (0.1Uf/25V)	413-3113-035	1
C143,144	CERAMIC CAPACITOR (20Pf/50V J NPO)	413-3113-034	2
C145	CERAMIC CAPACITOR (0.01Uf/50V)	413-3113-028	1
C146	CERAMIC CAPACITOR (0.1Uf/25V)	413-3113-035	1
C147	ELEC. CAPACITOR (220Uf/10V)	413-KC220-119	1
C148	CERAMIC CAPACITOR (0.1Uf/25V)	413-3113-035	1
C149	MYLAR CAPACITOR (0.033Uf J 50V)	413-KT350-088	1
C150	ELECTOR CAPACITOR (100Uf/10V)	413-3113-046	1
C152	ELEC. CAPACITOR (0.47Uf/50V)	413-KT350-093	1
C153	CERAMIC CAPACITOR (100Pf/50V K NPO)	413-PMSE1-258	1
C154	CERAMIC CAPACITOR (30Pf/50V J NPO)	413-HT8015-171	1
C155	CERAMIC CAPACITOR (30Pf/50V J NPO)	413-HT8015-171	1
C156	ELECTOR CAPACITOR (100Uf/10V)	413-3113-046	1
C157	CERAMIC CAPACITOR (0.1Uf/25V)	413-3113-035	1
C158	CERAMIC CAPACITOR (0.01Uf/50V)	413-3113-028	1
C170	CERAMIC CAPACITOR (0.1Uf/25V)	413-3113-035	1
C171	CERAMIC CAPACITOR (0.1Uf/25V)	413-3113-035	1
C174	ELEC. CAPACITOR (3300Uf/16V)	413-HDJ200-230	1
C176	ELEC. CAPACITOR (220Uf/10V)	413-KC220-119	1
C177	ELEC. CAPACITOR (100Uf/50V)	413-HC1421FR-277	1
C178	ELEC. CAPACITOR (100Uf/35V)	413-HMD5000-356	1
C179	ELECTOR CAPACITOR (10Uf/35V)	413-HC1421FR-227	1
C180,181	CERAMIC CAPACITOR (0.01Uf/50V Z Z5U)	413-3113-028	2
C182	ELECTOR CAPACITOR (100Uf/10V)	413-3113-046	1
C183	CERAMIC CAPACITOR (0.1Uf/25V)	413-3113-035	1
C184	CERAMIC CAPACITOR (0.047Uf/50V)	413-3113-033	1
C185	CERAMIC CAPACITOR (150P)	413-HT8015-154	1
C186	CERAMIC CAPACITOR (1000P)	413-1430-071	1

PCB ASS'Y PART LIST – 4

SERVO PCB ASS'Y 405-RCC955A-350

SYMBOL	DESCRIPTION	PARTS NO.	Q'TY
C187	CERAMIC CAPACITOR (47Pf/50V J NPO)	413-HT8015-153	1
C188	ELECTOR CAPACITOR (1Uf/50V)	413-3113-049	1
C189	CERAMIC CAPACITOR (0.1Uf/25V)	413-3113-035	1
C190	ELECTOR CAPACITOR (100Uf/10V)	413-3113-046	1
C191	CERAMIC CAPACITOR (0.1Uf/25V)	413-3113-035	1
C206~210	CERAMIC CAPACITOR (0.01Uf/50V)	413-3113-028	5
C211	CERAMIC CAPACITOR (0.1Uf/25V)	413-3113-035	1
C212	ELEC. CAPACITOR (100Uf/16V)	413-PXE90-109	1
C213,214	CERAMIC CAPACITOR (0.01Uf/50V)	413-3113-028	2
C215	ELECTOR CAPACITOR (4.7Uf/50V)	413-3113-050	1
C216	ELECTOR CAPACITOR (100Uf/10V)	413-3113-046	1
C217	CERAMIC CAPACITOR (0.1Uf/25V)	413-3113-035	1
C218	CERAMIC CAPACITOR (12Pf/50V K)	413-KC220-115	1
C219	CERAMIC CAPACITOR (12Pf/50V K)	413-KC220-115	1
C220	CERAMIC CAPACITOR (0.1Uf/25V)	413-3113-035	1
C221	CERAMIC CAPACITOR (1000P)	413-1430-071	1
C223	CERAMIC CAPACITOR (470P)	413-3113-036	1
C224	CERAMIC CAPACITOR (56P)	413-HC1421FR-243	1
C225	CERAMIC CAPACITOR (20Pf/50V J NPO)	413-3113-034	1
CN101	SOCKET (16PIN P=1.0mm SMD FPC2T-16P)	404-HV3423K-583	1
CN102	3P SOCKET (P=3.96mm)	404-RCC955A-707	1
CN103	5P CONNECTOR BASE (JST P=2.5mm)	404-HV3500K-622	1
CN104	6P SOCKET	404-90V1-101	1
CN105	6P CONNECTOR BASE (B6B-XH-A)	404-HV3500K-630	1
CN106	2P CONNECTOR (JST P=2.5mm)	404-KMD1500-608	1
CN201	7P SOCKET (JAE P=2mm)	404-KMD280-277	1
CN202	BASE 8P (JAE P=2mm)	404-501-085	1
CN203	4P SOCKET (S4B-PH-K,P=2mm)	404-DCM270E3-878	1
CN204	27P FFC SOCKET (P=1mm,SMT ZIF TYPE)	404-DCM270X-793	1
D106	ZENER DIODE (MTZJ27D-M-T77)	414-DCM270E3-093	1
D107	ZENDER DIODE (MTZJ18C-T77)	414-HMD5000-081	1
D108	ZENER DIODE (6.8V, 1/2W, MTZ6.8C)	414-KC720-016	1
D109	SPEED SWITCHING DIODE (ISS132 OR ISS133)	414-3113-005	1
D204	ZENER DIODE (10V, MTZ-10B)	414-SPPW3-061	1
IC101	IC (CXA1782CQ QFP48)	417-KMD3500-238	1
IC102	IC (CXD2500BQ QFP80)	417-KMD3500-239	1
IC103	DRIVE IC (BA6397FP HSOP28)	417-HV3288K-208	1
IC104	IC (GMS90C52, 40PIN, MASK)	417-DCM270X-381	1
IC105	IC (74HC04,SOP-14)	417-DCM370E3-378	1
IC2	IC (LM78L05 TAPING TO-92)	417-PMSE1-161	1
IC201	IC (HD6473714, QFP-64, OTP)	417-DCM270X-326	1
IC202	PHOTO COUPLER (PC817 DIP4)	417-HMD5000-283	1
IC203	INTEGRATED CIRCUIT (LA6531)	417-KC220-045	1
JK02	1P RCA JACK (BLACK)	420-HMD5000-054	1
JK03	3.5 HEADPHON JACK (JY-3535-01-030GD)	420-HMDV3360K-5014	1
L101	INDUCTOR (10uH)	415-MPG100-047	1
L104	BEAD (RH03506BT-B)	415-DCM370E3-134	1
L103,102	INDUCTOR (10uH)	415-MPG100-047	2
L105	COIL (P-7GB)	415-RCC955A-091	1
L106,107	INDUCTOR (10uH)	415-MPG100-047	2
L201	INDUCTOR (10uH)	415-MPG100-047	1
P101	SEMI FIXED RESISTOR (P=5mm M B100K YELLOW)	412-3113-043	1
Q101,102	TRANSISTOR (2SA933SR OR 2SA608G)	416-3113-008	2
Q103,104	TRANSISTOR (2SB1010(R) OR 2SB892T)	416-1360S-017	2
Q106	TRANSISTOR (DTC143TSA-TP)	416-DCM270E3-130	1

PCB ASS'Y PART LIST – 5**SERVO PCB ASS'Y 405-RCC955A-350**

SYMBOL	DESCRIPTION	PARTS NO.	Q'TY
Q108	TRANSISTOR (2SA1589)	416-KE200S-024	1
Q203	TRANSISTOR (DTC124ES OR 2SC3400)	416-3113-010	1
R101	CARBON FILM RESISTOR (91 OHM J 1/6W)	412-HC1421FR-248	1
R102	CARBON FILM RESISTOR (10 OHM J 1/6W)	412-KC220-132	1
R103	CARBON FILM RESISTOR (100K OHM J 1/6W)	412-3113-047	1
R104	CARBON FILM RESISTOR (2.2K OHM J 1/6W)	412-3113-048	1
R105	CARBON FILM RESISTOR (27K OHM J 1/6W)	412-3113-054	1
R106	CARBON FILM RESISTOR (180K OHM J 1/6W)	412-3113-074	1
R107~110	CARBON FILM RESISTOR (47K OHM J 1/6W)	412-3113-063	4
R111~113	CARBON FILM RESISTOR (100K OHM J 1/6W)	412-3113-047	3
R114	CARBON FILM RESISTOR (150K OHM J 1/6W)	412-3113-046	1
R115	CARBON FILM RESISTOR (330K OHM J 1/6W)	412-3113-064	1
R116	CARBON FILM RESISTOR (470K OHM J 1/6W)	412-KT300-108	1
R117	CARBON FILM RESISTOR (18K OHM J 1/6W)	412-3113-061	1
R118	CARBON FILM RESISTOR (1.8K OHM J 1/6W)	412-3113-075	1
R119	CARBON FILM RESISTOR (680K OHM J 1/6W)	412-HT8015-212	1
R120	CARBON FILM RESISTOR (82K OHM J 1/6W)	412-KT300-105	1
R121	CARBON FILM RESISTOR (56K OHM J 1/6W)	412-3113-071	1
R122	CARBON FILM RESISTOR (82K OHM J 1/6W)	412-KT300-105	1
R123	CARBON FILM RESISTOR (47K OHM J 1/6W)	412-3113-063	1
R124	CARBON FILM RESISTOR (82K OHM J 1/6W)	412-KT300-105	1
R125	CARBON FILM RESISTOR (8.2K OHM J 1/6W)	412-KM500-123	1
R126	CARBON FILM RESISTOR (120K OHM J 1/6W)	412-3113-062	1
R127	CARBON FILM RESISTOR (6.8K OHM J 1/6W)	412-3113-069	1
R128	CARBON FILM RESISTOR (3.3K OHM J 1/6W)	412-3113-057	1
R129	CARBON FILM RESISTOR (10K OHM J 1/6W)	412-3113-068	1
R130	CARBON FILM RESISTOR (1M OHM J 1/6W)	412-3113-079	1
R131	CARBON FILM RESISTOR (10K OHM J 1/6W)	412-3113-068	1
R132	CARBON FILM RESISTOR (100K OHM J 1/6W)	412-3113-047	1
R133	CARBON FILM RESISTOR (100 OHM J 1/6W)	412-3113-060	1
R134	CARBON FILM RESISTOR (2.2 OHM 1/2W)	412-CDG9-408	1
R135	CARBON FILM RESISTOR (2.2K OHM J 1/4W)	412-3113-082	1
R136	CARBON FILM RESISTOR (4.7K OHM J 1/6W)	412-3113-055	1
R137	CARBON FILM RESISTOR (10K OHM J 1/6W)	412-3113-068	1
R138	CARBON FILM RESISTOR (12K OHM J 1/6W)	412-3113-051	1
R139	CARBON FILM RESISTOR (10K OHM J 1/6W)	412-3113-068	1
R140	CARBON FILM RESISTOR (3.3K OHM J 1/6W)	412-3113-057	1
R141	CARBON FILM RESISTOR (510K OHM J 1/6W)	412-KMD3500-366	1
R142	CARBON FILM RESISTOR (22K OHM J 1/6W)	412-3113-059	1
R143	CARBON FILM RESISTOR (1.8K OHM J 1/6W)	412-3113-075	1
R145	CARBON FILM RESISTOR (1K OHM J 1/6W)	412-3113-078	1
R158	CARBON FILM RESISTOR (4.7K OHM J 1/6W)	412-3113-055	1
R159	CARBON FILM RESISTOR (27 OHM J 1/6W)	412-HDJ7000-377	1
R162	CARBON FILM RESISTOR (10K OHM J 1/6W)	412-3113-068	1
R163~165	CARBON FILM RESISTOR (220 OHM J 1/6W)	412-3113-058	3
R168	CARBON FILM RESISTOR (1K OHM J 1/6W)	412-3113-078	1
R169~172	CARBON FILM RESISTOR (220 OHM J 1/6W)	412-3113-058	4
R185~187	CARBON FILM RESISTOR (10K OHM J 1/6W)	412-3113-068	3
R196	CARBON FILM RESISTOR (75 OHM J 1/6W)	412-KCG220-197	1
R219	CARBON FILM RESISTOR (22K OHM J 1/6W)	412-3113-059	1
R220	CARBON FILM RESISTOR (22K OHM J 1/6W)	412-3113-059	1
R221	CARBON FILM RESISTOR (270 OHM J 1/6W)	412-3113-049	1
R223,224	CARBON FILM RESISTOR (15K OHM J 1/6W)	412-3113-053	2
R225,226	CARBON FILM RESISTOR (22K OHM J 1/6W)	412-3113-059	2
R227,228	CARBON FILM RESISTOR (18K OHM J 1/6W)	412-3113-061	2

PCB ASS'Y PART LIST – 6

SERVO PCB ASS'Y 405-RCC955A-350

SYMBOL	DESCRIPTION	PARTS NO.	Q'TY
R229	CARBON FILM RESISTOR (15K OHM J 1/6W)	412-3113-053	1
R230	CARBON FILM RESISTOR (15K OHM J 1/6W)	412-3113-053	1
R231,232	CARBON FILM RESISTOR (22K OHM J 1/6W)	412-3113-059	2
R233,234	CARBON FILM RESISTOR (15K OHM J 1/6W)	412-3113-053	2
R235	CARBON FILM RESISTOR (22K OHM J 1/6W)	412-3113-059	1
R236~239	CARBON FILM RESISTOR (6.8K OHM J 1/6W)	412-3113-069	4
R240	CARBON FILM RESISTOR (1M OHM J 1/6W)	412-3113-079	1
R253	CARBON FILM RESISTOR (47K OHM J 1/6W)	412-3113-063	1
R254	CARBON FILM RESISTOR (100 OHM J 1/6W)	412-3113-060	1
RB201	THICK FILM RESISTOR NETWORKS (150K OHM J 7R8P)	412-HV3363K-358	1
RB202	THICK FILM RESISTOR NETWORKS (150K OHM J 9R10P)	412-HV3363K-359	1
RB203	THICK FILM RESISTOR NETWORKS (150K OHM J 9R10P)	412-HV3363K-359	1
RB205	THICK FILM RESISTOR NETWORKS (10K OHM J 6R7P)	412-KMD280-165	1
X101	CRYSTAL (16.9344MHz)	427-KC710-019	1
X102	CRYSTAL (12MHZ)	427-KMD3500-047	1
X201	CRYSTAL 8 MHZ	427-DV300-5017	1

PHOTO TRANSISTOR PCB ASS'Y 405-DCM270X-418

SYMBOL	DESCRIPTION	PARTS NO.	Q'TY
	PHOTO TRANSISTOR PCB ASS'Y	704-DCM270X-1797	1
	PHOTO TRANSISTOR PCB	405-DCM270X-418	1
Q01	PHOTO TRANSISTOR (LTR-301)	416-DCM270X-120	1

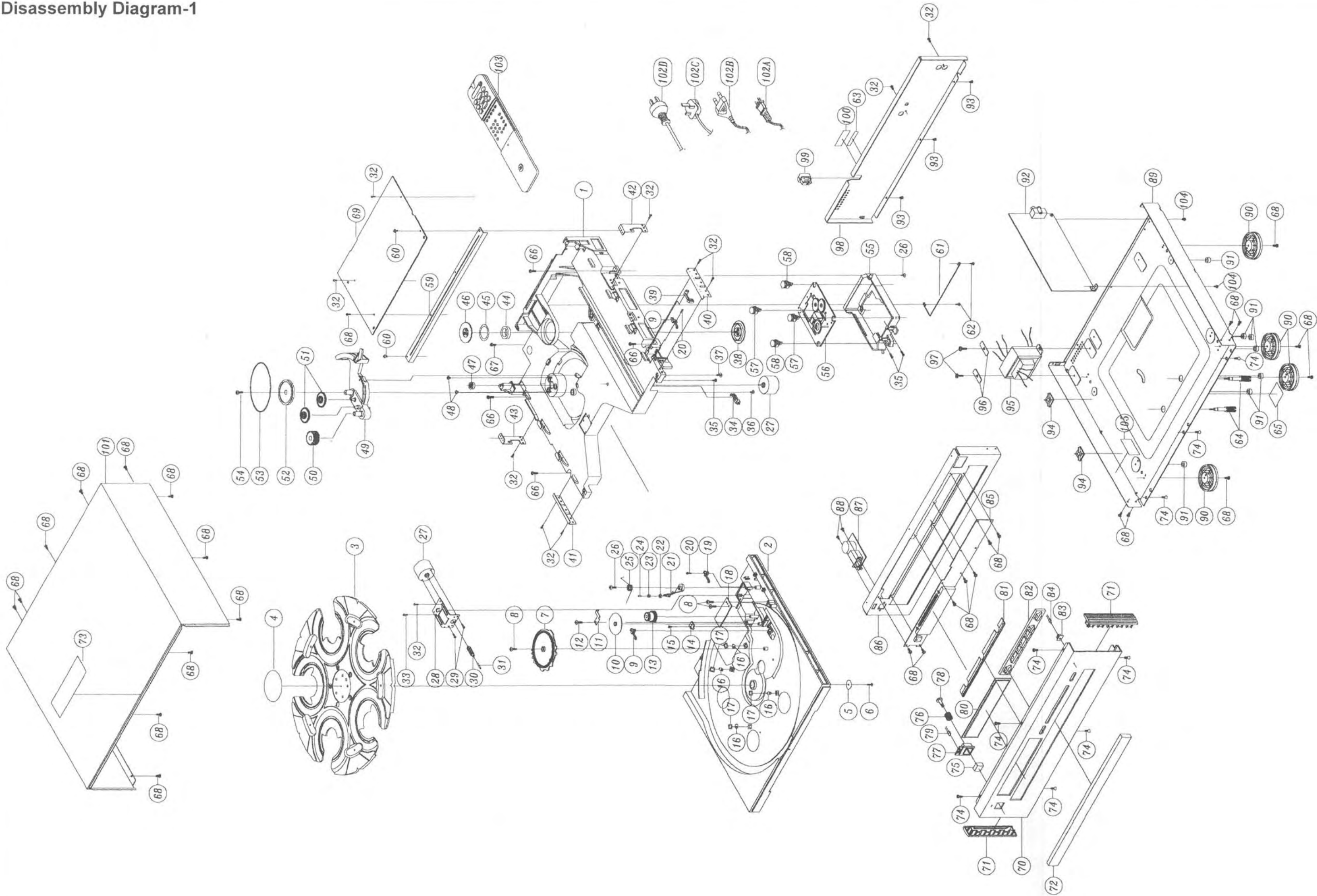
INFRARED EMITTING PCB ASS'Y 405-DCM270X-419

SYMBOL	DESCRIPTION	PARTS NO.	Q'TY
	INFRARED EMITTING PCB ASS'Y	704-DCM270X-1798	1
	INFRARED EMITTING PCB	405-DCM270X-419	1
D01	INFRARED EMITTING DIODE (LTE-4206C)	410-DCM270X-132	1
R01	CARBON FILM RESISTOR (390 OHM J 1/6W)	412-3113-076	1
	ROUND PLASTIC SPACER (302A)	605-DCM270-055	1

POWER PCB ASS'Y 405-RCC955A-352

SYMBOL	DESCRIPTION	PARTS NO.	Q'TY
	POWER PCB ASS'Y (USA VERSION)	704-RCC955A-2163	1
	POWER PCB ASS'Y (EUROPEAN VERSION)	704-RCC955B-2221	1
SW401	SWITCH (POWER)(SDDL B 1017U-HF)	403-A100-005	1
	POWER PCB	405-RCC955A-352	1
	JUMPER (W=5mm L=10mm)	406-2002-106	1
USA	AC POWER CORD (UL TYPE)	409-HMD5000-053	1
EUROPEAN	AC POWER CORD (VDE TYPE)	409-3004-016	1
C401	CERAMIC CAPACITOR (4700PF 400V)	413-1431-104	1
L401	INDUCTOR (LF-2217)	415-RCC955A-092	1
F401	FUSE CLIPS	420-KT350A-004	2
F401	FUSE	422-KT350A-003	1
	FUSE COVER	504-DJ2500J-046	1

Disassembly Diagram-1



Disassembly Diagram-2

SYMBOL	DESCRIPTION	PARTS NO.	Q'TY	REMARK
1	BOTTOM	100-KMD550-1213A	1	
2	BASE	100-KMD550-1214C	1	
3	DISK	100-KMD550-1215A	1	
4	LABEL (BLACK, DIAMETER 59.9mm)	501-KMD550-1099	1	
5	FIXED CENTER WASHER	606-C426-066	1	
6	SCREW (3*10 ZK PTP)	602-MK7-131	1	
7	TRANSFER GEAR	100-KMD550-1216	1	
8	SCREW (TTP 2.6*7 CAP10 Z)	602-DV300-5023	3	
9	LEAF SWITCH (LSA-119H)	403-DM11A-020	2	
10	MIDDLE GEAR	100-KMD280-733	1	
11	FORWARD GEAR FIXED IRON	300-KMD280-305	1	
12	SCREW (2.6*5.5mm)	602-KM300-144	1	
13	TRANSFER GEAR	100-KMD280-736A	1	
14	INFERARED EMITTING PCB ASS'Y	704-DCM270X-1798	1	
15	SCREW (M2.6*3mm)	602-KMD510-158	1	
16	WHEEL	100-KMD280-729	4	
17	FIXED SHEET	501-KMD550-1146	4	
18	PHOTO TRANSISTOR PCB ASS'Y	704-DCM270X-1797	1	
19	LEAF SWITCH (LSA-1119F)	403-KMD550-087	1	
20	SCREW (2.6*8 PTP)	602-SL24F-099	2	
21	CORRECTING LEVER	100-KMD550-1217	1	
22	RUBBER RING	604-KM300-057	1	
23	WHEEL	100-KM300-516	1	
24	PIN	200-KMD550-181	1	
25	SPRING	603-KMD550-199	1	
26	SCREW (M3*9 PTP)	602-SL24F-097	2	
27	MOTOR MEN-7E2T5	401-MK7-043	2	
28	MOTOR FIXED PLATE	300-KMD550-262	1	
29	SCREW (M2.6*3mm)	602-KM500-155	2	
30	SPIRAL GEAR	100-KMD280-731A	1	
31	SHAFT	200-KMD280-174	1	
32	SCREW (3*8mm BTP)	602-2002-077	9	
33	SCREW (DIA 3*10 SHEAP END)	602-M100-032	1	
34	LEAF SWITCH (LSA-2127E)	403-KMD280-048	1	
35	SCREW (PTP 3*14)	602-KMD550-250	3	
36	SCREW (PTP 4*8mm)	602-KMD550-261	1	
37	SCREW (M3*7 PTP)	602-SL24F-096	1	
38	DISK HOLDER	100-KMD550-1219	1	
39	SWITCH CONTROL	100-KMD280-730	1	
40	STAT R	300-KMD280-265RA	1	
41	STAY L	300-KMD550-265L	1	
42	R.FIXED PLATE	300-KMDV280C-264A	1	
43	L.FIXED PLATE	300-KMDV280C-263A	1	
44	MAGNET	613-MK7-002	1	
45	WASHER (HIMILON)	612-KT300-007	1	
46	SWIVEL PLATE	300-KMD550-466	1	
47	MOTOR PULLEY	100-KMD280-728	1	
48	SCREW (2.6*4 P=0.45)	602-MK7-134	2	
49	GEAR SET	100-KMD550-860D2	1	

Disassembly Diagram-3

SYMBOL	DESCRIPTION	PARTS NO.	Q'TY	REMARK
50	B. GEAR	100-KMD280-727	1	
51	S. GEAR	100-KMD280-734	2	
52	BELT GEAR	100-KMD280-732B	1	
53	MOTOR BELT	604-KMD280-094	1	
54	SCREW (M3*8 PTP)	602-KMD510-169	1	
55	CD DECK HOLDER	100-KMD550-1220B	1	
56	MECHA ASS'Y (KSM-213CCM)	704-HV3423K-1441	1	
57	CUSHION RUBBER (PRIMARY COLORS)	604-KMD550-118	2	
58	CUSHION BUBBER (RED SILICA GEL)	604-KMD550-117	2	
59	MAIN PCB BRACKET	300-KMD550-486	1	
60	SCREW (2.6*6mm)	602-KMD550-255	2	
61	STEEL WIRE	603-KMD280-200	1	
62	SCREW (TTP CAP M3*8)	602-B600-056	2	
63	SERIES NO. LABEL	501-DV300-1067	1	
64	TRANSPORTATION SCREW ASS'Y	701-AVD3500K-1668	2	
65	TRANSIT SCREWS LABEL	501-HT8023K-949	1	
66	SCREW (TTB M3*12mm)	602-DV300B-219	4	
67	SCREW (TTB 3*L10)	602-HP1010K-174	1	
68	SCREW (3*L8)	602-HP1010K-175	27	
69	SERVO PCB ASS'Y	704-RCC955A-1627	1	
70	FRONT PANEL (011 FP-500)	300-RCC955-609	1	
71	CAP (014 4TR-2797#3)	100-RCC955-1533	2	
72	CD DOOR	100-RCC955A-1302	1	
73	TRANSPORTATION SCREW LABEL	501-RCC955A-1284	1	
74	SCREW ("B" TITE, 3*7mm)	602-RCC955-292	9	
75	POWER KNOB (4TQF-15)	100-RCC955-1529	1	
76	SPRING (019 4TR-1988A#2)	603-RCC955-232	1	
77	KNOB BASE (019 4TQF-13)	100-RCC955-1530	1	
78	RING FOR KNOB (4TTL-15)	100-RCC955-1531	1	
79	LED (034 SEL-1124R)	410-RCC955A-127	1	
80	WINDOW LENS	100-RCC955-1333	1	
81	SPACER FOR FRONT PANEL (019 4TR-2418)	100-RCC955-1534	1	
82	BUTTON	100-RCC955-1332	1	
83	LED HOLDER (019 C-4598A00)	100-RCC955-1535	1	
84	LED (034 LTL1214A)	410-RCC955A-126	1	
85	CONTROL PCB ASS'Y	704-RCC955A-1628	1	
86	FRONT CHASSIS ASS'Y	703-RCC955A-348	1	
87	POWER PCB ASS'Y	704-RCC955A-2163	1	USA
87	POWER PCB ASS'Y	704-RCC955B-2221	1	EUROPEAN
88	SCREW (M3*6, P=0.5)	602-RCC955-291	2	
89	BUTTOM BASE	300-RCC955-520	1	
90	FOOT (019 4TSH-19#2)	100-RCC955-1532	4	
91	PROTECTIONMAT	612-HMD5000-065	7	
92	AUDIO PCB ASS'Y	704-RCC955A-2162	1	
93	SCREW (3*5mm BLACK)	602-KE200-145	3	
94	ADHESIVE BACKED MOUNTS	504-HDJ7000-032	2	
95	TRANSFORMER	411-RCC955A-130	1	
96	BRACKET TRANSFORMER	300-DV300B-443	2	
97	SCREW ("B" TAPTITE, DIAMATER 4*8mm)	602-DCM270-281	2	

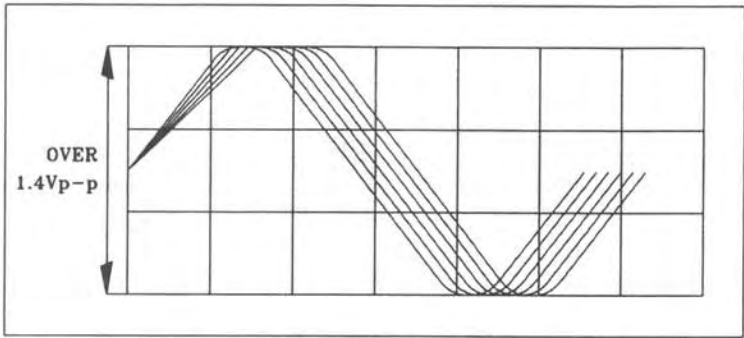
ADJUSTMENT PROCEDURES

REQUIRED EQUIPMENT

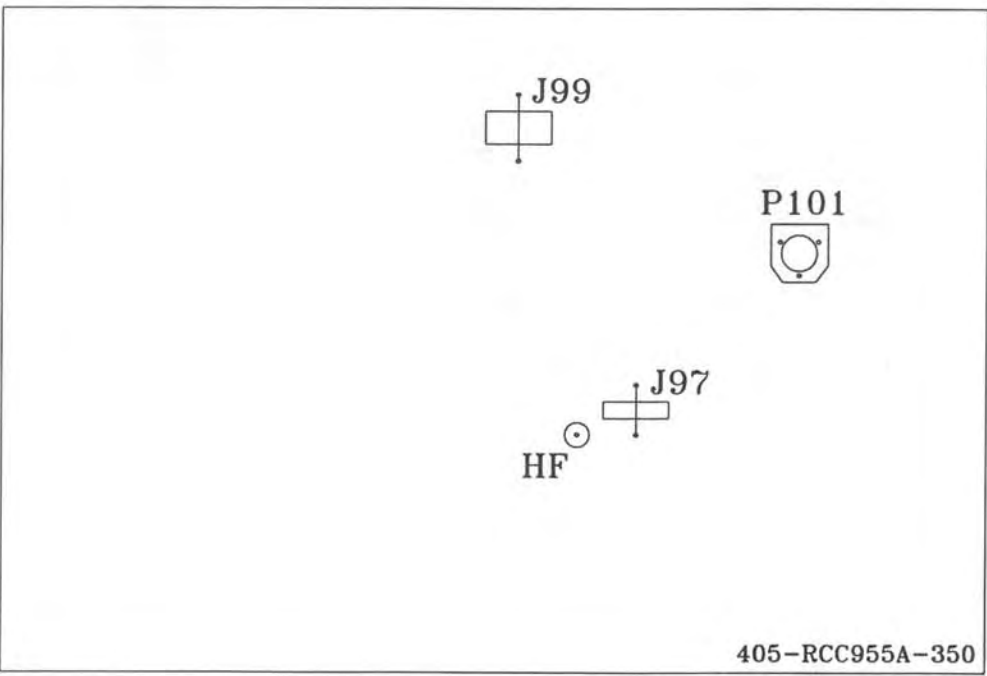
- ★ OSCILLOSCOPE (DC 20MHZ , DUAL TRACE) 1SET
- ★ CERAMIC SCREW DRIVER 1SET

FREQUENCY ADJUSTMENT

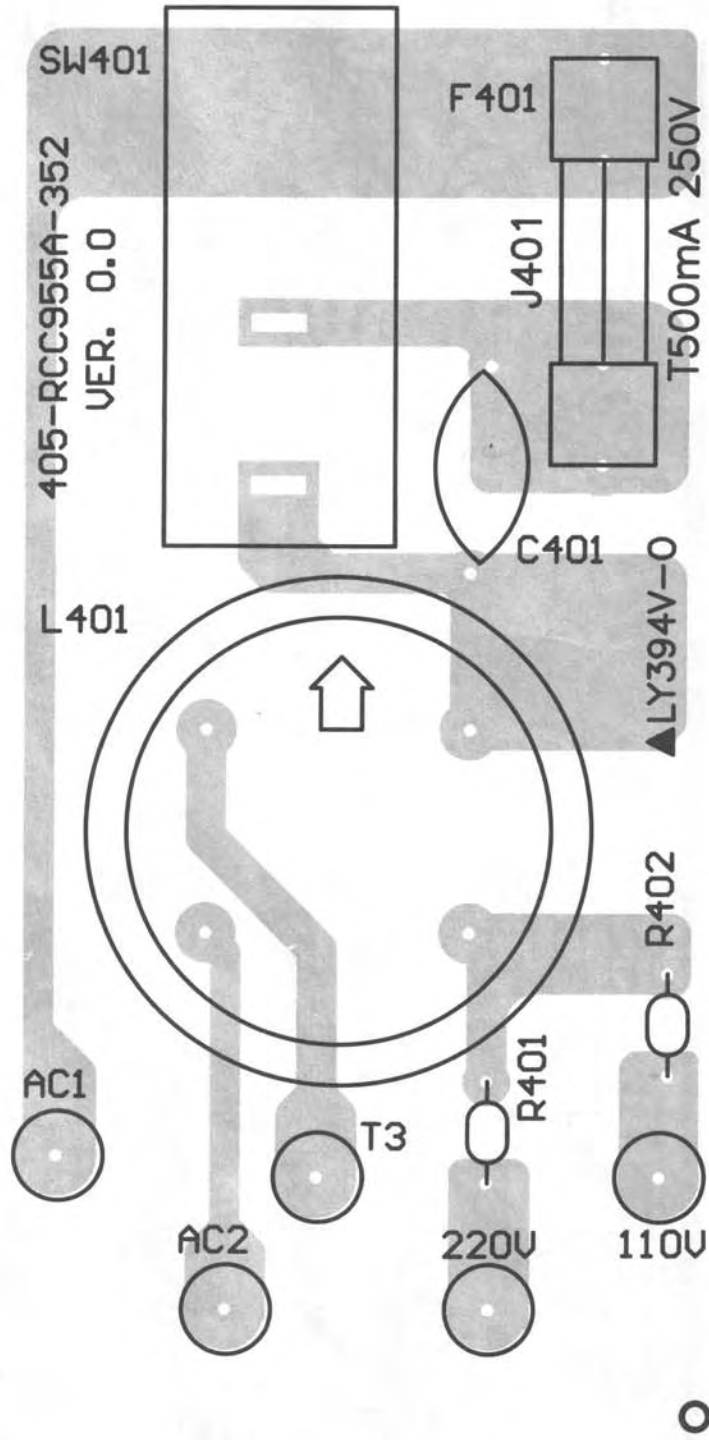
1. TURN ON THE POWER OF THE CD PLAYER AND INSERT THE DISC THEN SET THE UNIT TO THE PLAY MODE.
2. CONNECT THE OSCILLOSCOPE PROBLE TO J97 (HF POSITION) AND J99 (DGND).
3. SETUP OSCILLOSCOPE TIME / DIV FOR 0.2US, VOLTS / DIV FOR 0.5V / DIV.
4. ADJUST P101 WITH CERAMIC SCREW DRIVER, MAKE VOLTAGE TO MAX (DON'T LOW 1.4V p-p).

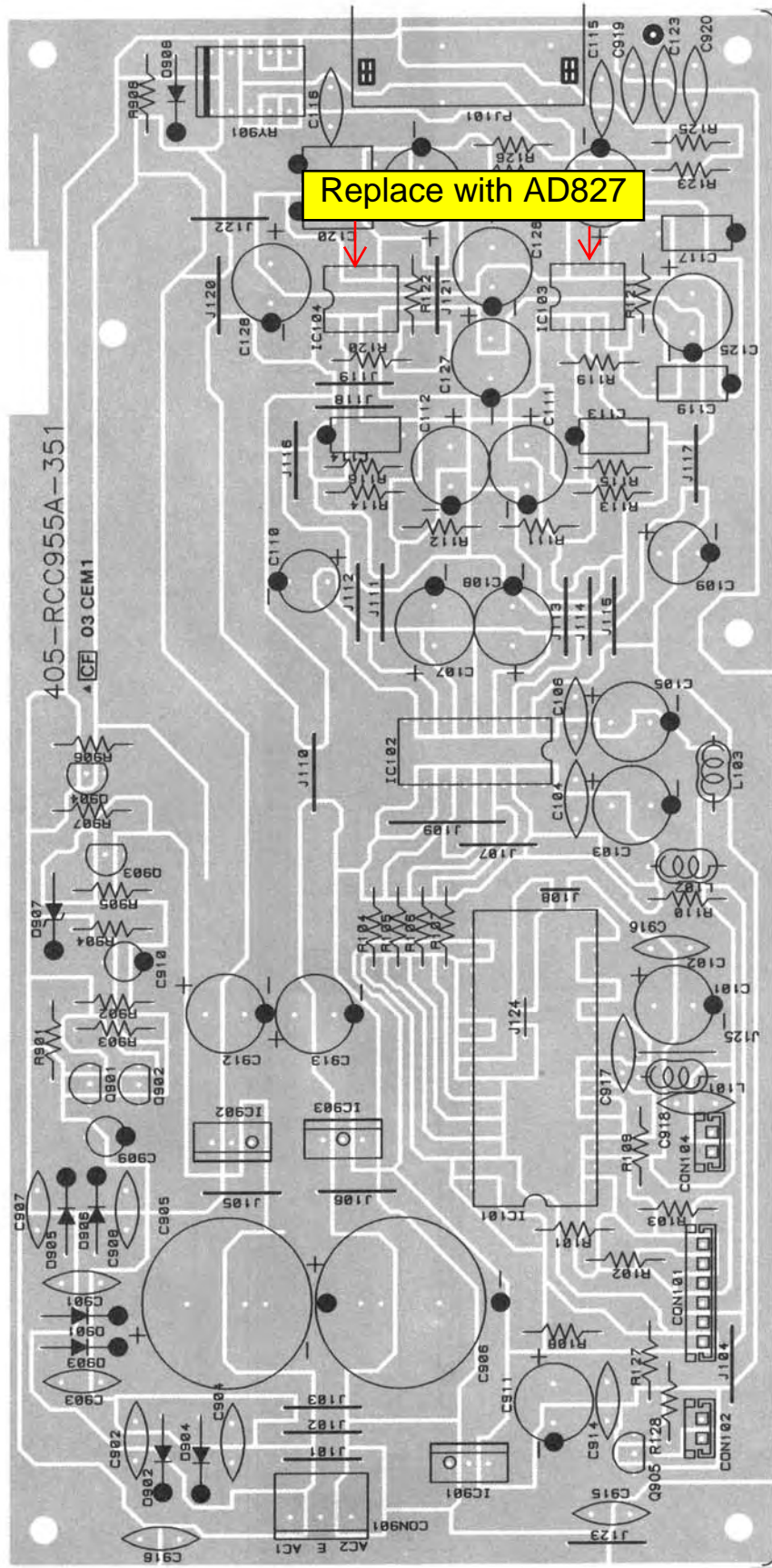


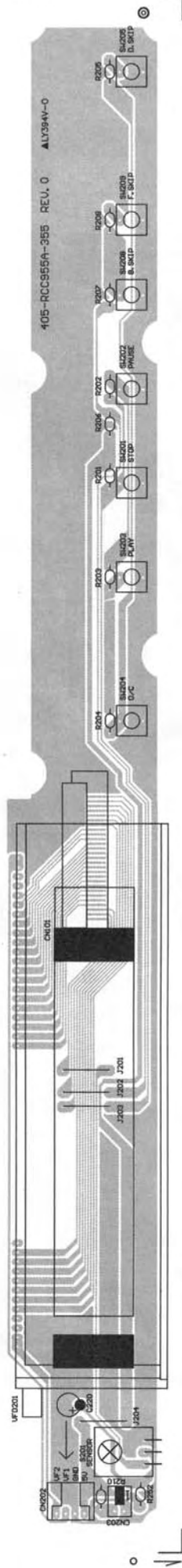
OSCILLOSCOPE MONITOR

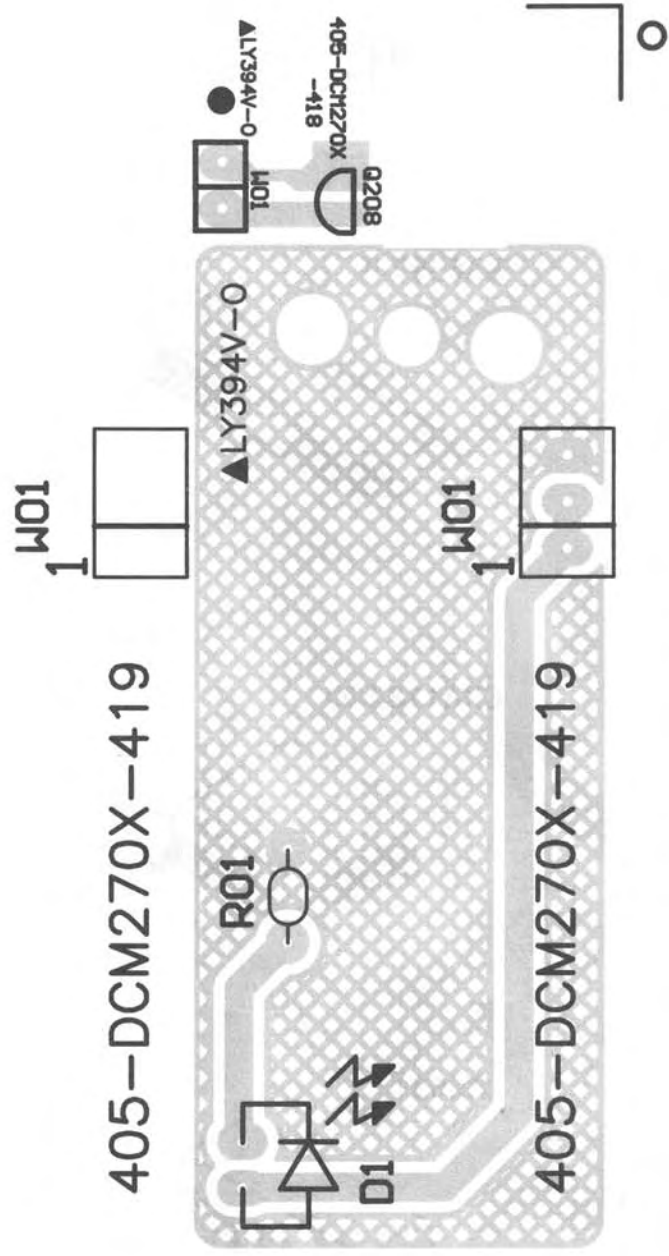


405-RCC955A-350



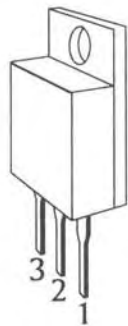






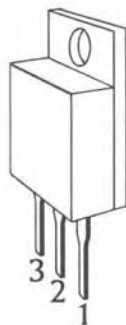
Case Outlines

NJM7815FA
NJM7805FA



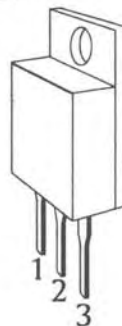
1. OUTPUT
2. COMMON
3. INPUT

NJM7915FA



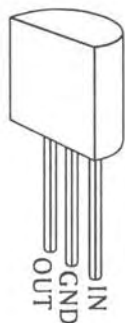
1. OUTPUT
2. INPUT
3. COMMON

BA08T

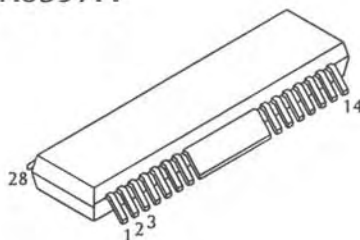


1. Vcc
2. GND
3. OUT

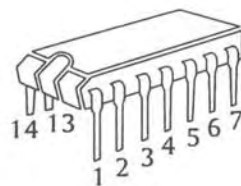
78L05



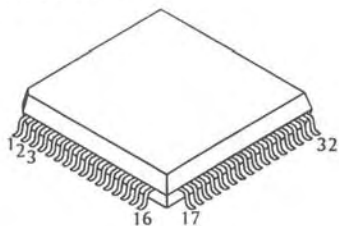
BA6397FP



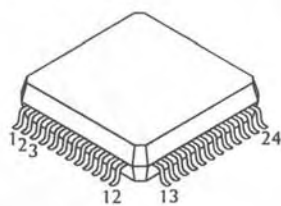
74HCU04D



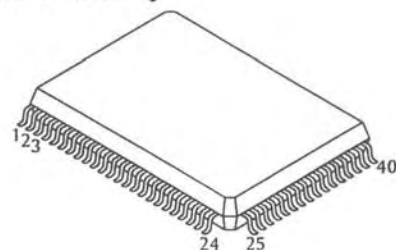
HD6473714HI



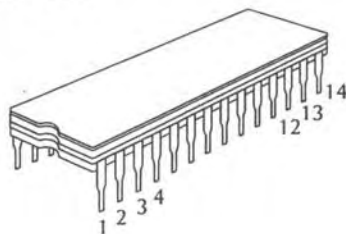
CXA1782CQ



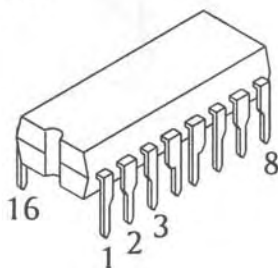
CXD2500BQ



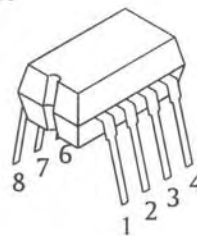
PMD-100



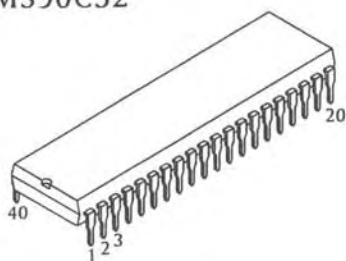
LA6531



OP275GP

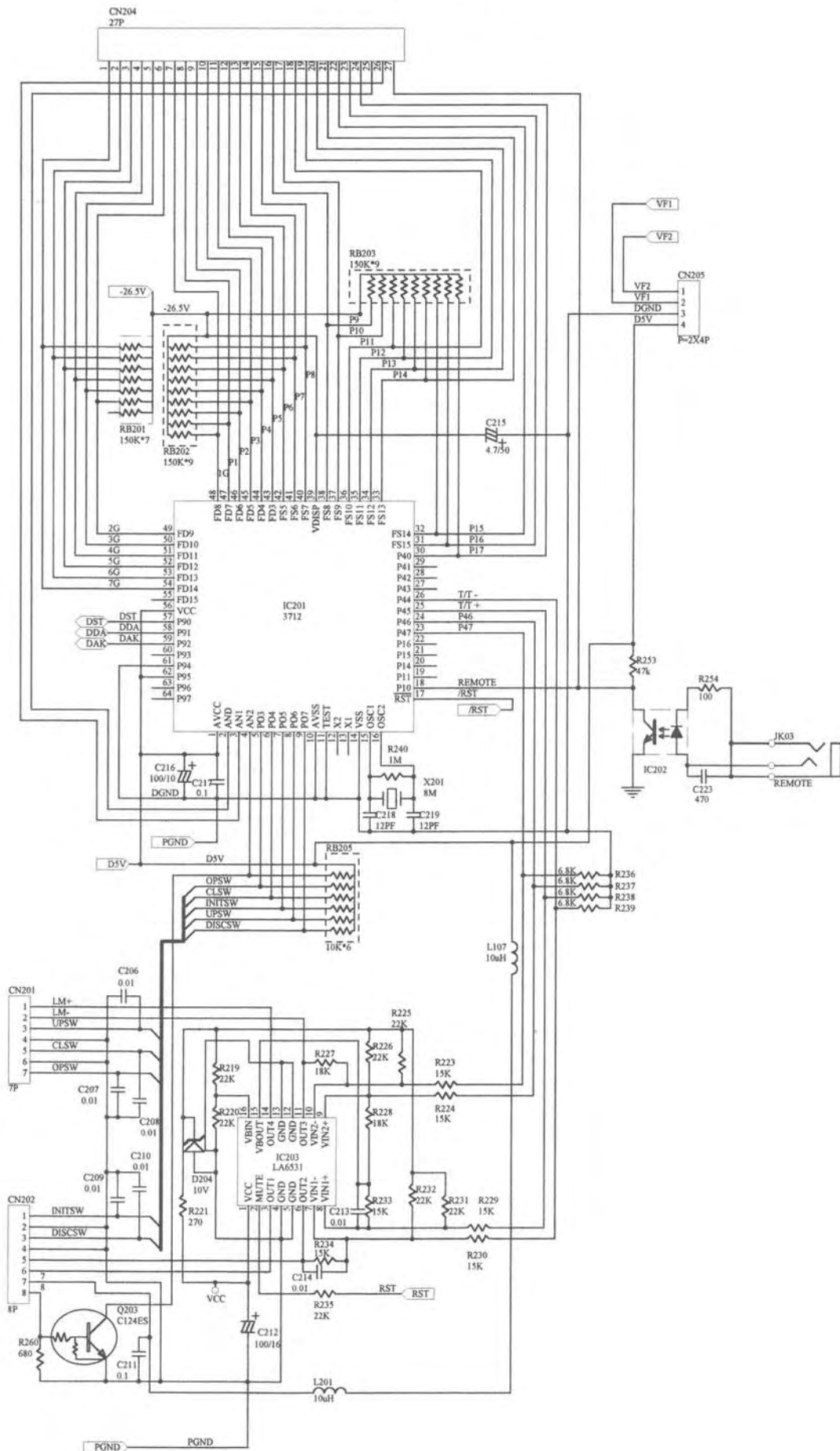


GMS90C52



Schematic Diagram 405-RCC955A-350 (1/2)

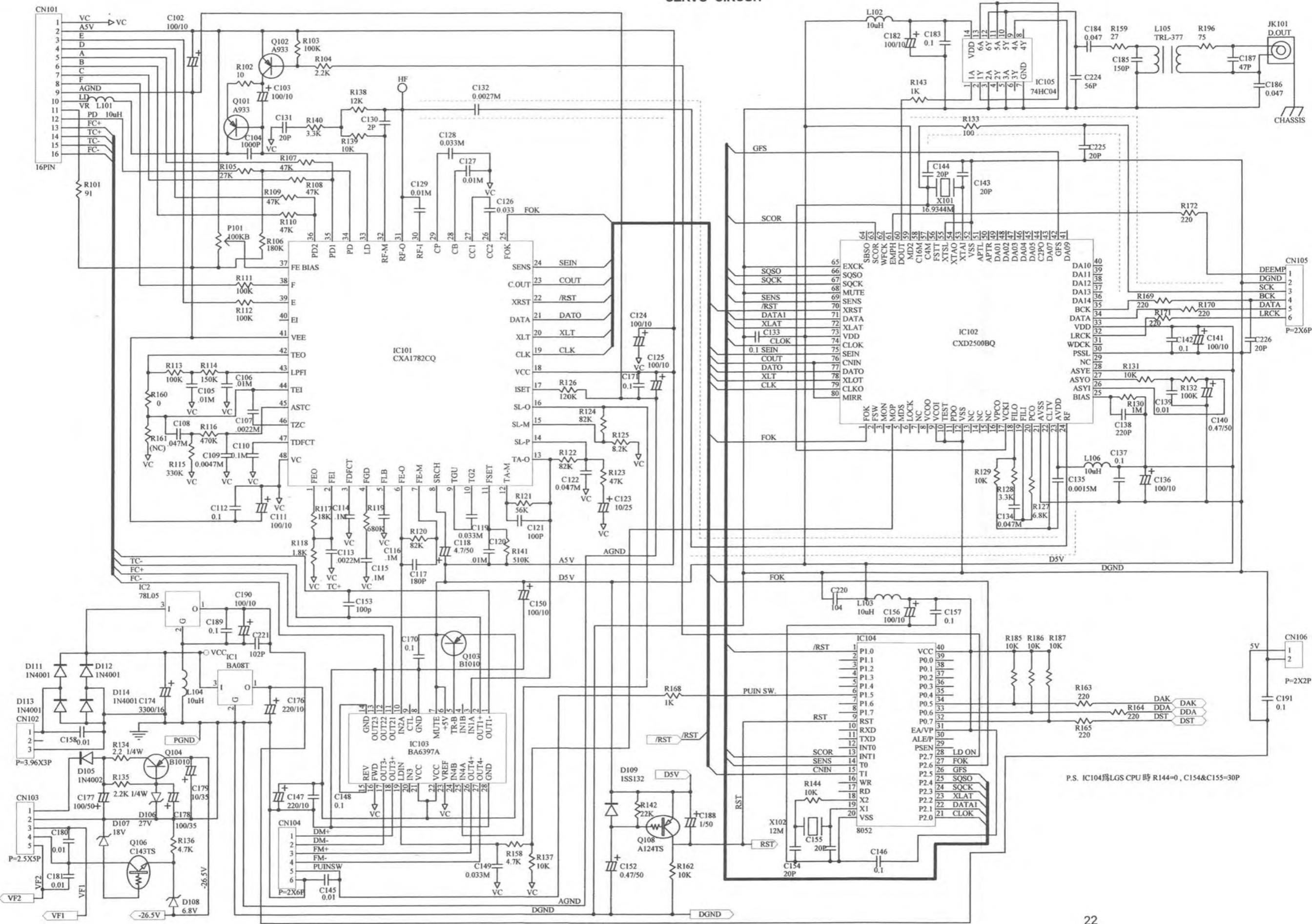
SERVO CIRCUIT



Schematic Diagram 405-RCC955A-350 (2/2)

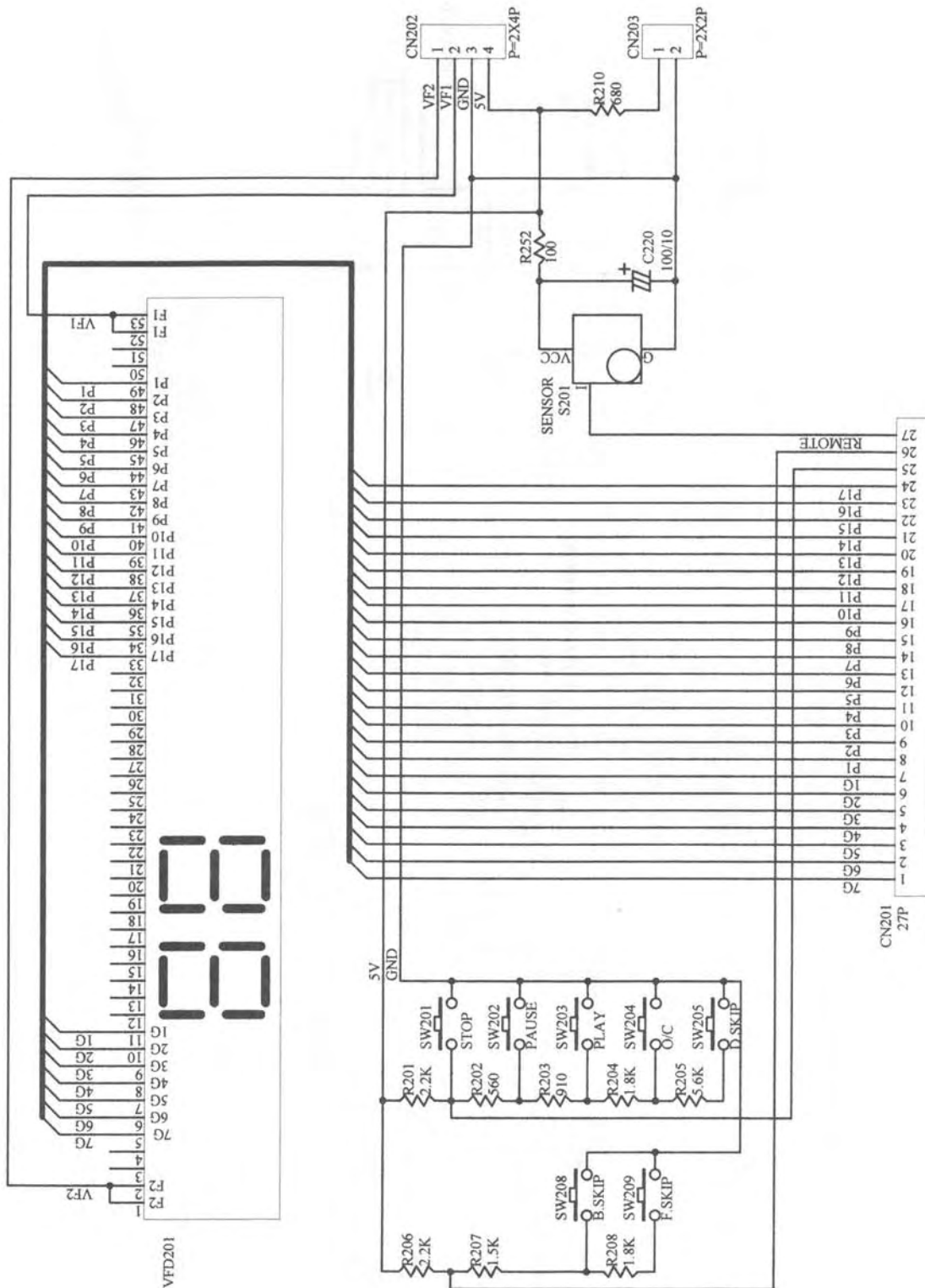
SERVO CIRCUIT

SERVO CIRCUIT



Schematic Diagram 405-RCC955A-355

CONTROL CIRCUIT



Schematic Diagram 405-RCC955A-352

POWER CIRCUIT

