



# Technical Manual

# DOLBY DECODER RDA-975

### Table of Contents

- Specification.....
- Parts List.....2~6
- PCB Assembly.....7~9
- Schematic Diagram .....10~13

**THE ROTEL CO., LTD.**  
 SHINSEN-BLD. 4F 10-10 SHINSEN-CHO, SHIBUYA-KU,  
 TOKYO 150-0045, JAPAN

|                          |
|--------------------------|
| Serial. NO.<br>Beginning |
|--------------------------|

## Parts List (1/5)

| SYMBOL                  | PART NO.     | DESCRIPTION               | SPECIFICATION    |
|-------------------------|--------------|---------------------------|------------------|
|                         | 651B2U56B21P | AC CORD                   | SPT-2 #18AWG     |
|                         | 85A556*****  | ACRY                      | A-556            |
|                         | 85A491*****  | ACRYLIC,LIGHT GUIDER      | A-491 ROUND      |
|                         | 85A499*****  | ACRYLIC,LIGHT GUIDER      | A-499            |
|                         | 75L63300177* | AL PLATE                  | L-633            |
|                         | 93AU1*****   | ALL PLATIC WIRE CONNECTOR | S-1              |
|                         | 97D161*****  | ALUMINUM FOIL             | D-161            |
| TRANSFORMER             | 78C233701015 | BOTTOM PLATE              | C-2337           |
|                         | 78C206000587 | BRACKET,U-TYPE            | C-2060           |
|                         | 78233801027* | BREAKET,LEFT              | C-2338           |
|                         | 78C233601014 | BREAKET,RIGHT             | C-2336           |
|                         | 98BSB4F1K*** | BUSHING                   | SB4F-1           |
| POWER SWITCH            | 594722ERKCBW | CAPACITOR,VDE             | 472/250V         |
| TRANSFORMER TO B2882 J2 | 66HD686***** | CONNECTOR                 | ED-686 3P        |
| TRANSFORMER TO B2882 J1 | 66HD463***** | CONNECTOR                 | ED-463 2P        |
| TV3                     | 92S064*****  | COPPER POST 12MM          | S-064            |
|                         | 85A560*****  | FILM                      | A-560            |
|                         | 85A544*****  | FILTER                    | A-544            |
|                         | 81A4TSH19*** | FOOT CUSHION              | 4TSH-19#2 50Φ    |
|                         | 78C230501013 | FRONT PLATE               | C-2305           |
| B2882 F1-F3             | 2652000222*2 | FUSE 19195                | 2A/250V T 5x20   |
| SIZE 493x390x127        | 91IRDA975*** | INSIDE CARTON             | G00065           |
|                         | 60B2880***** | P.C.B.                    | B2880            |
|                         | 60B2881***** | P.C.B.                    | B2881 KEY        |
|                         | 60B2882***** | P.C.B.                    | B2882 POWER      |
|                         | 60B2403A**** | P.C.B.                    | B2403B Z38500    |
| KEY                     | 85A480*****  | LIGHT BOX                 | A-480            |
| 80MM                    | 85A561*****  | ORNAMENT END CAP          | A-561 4TR-2797#2 |
| SIZE 503x406x320        | 91CRDA975*** | OUTER CARTON              | G00066           |
|                         | SCCR*P1809B* | PLASTIC SCREW             | 1/8x9            |
|                         | 80TQF15***** | POWER PUSH KNOB           | 4TQF-15          |
|                         | 20PSDLB1007U | POWER SWITCH              | SDDL1007U TV3    |
|                         | 80KB383***** | PUSH KNOB 2P              | KB-383           |
|                         | 80KB382***** | PUSH KNOB 3P              | KB-382           |
|                         | 85A4TTL15*** | PUSH SW CONNECTOR         | 4TTL-2(A-365)    |
|                         | 97DS072***** | PUSH SW SPRING            | TR-1988A(S-072)  |
|                         | 85A358*****  | PVC,UPPER                 | A-358(4TR-2418)  |
| B2881x8.B2882x4.B2880x3 | 78C230601017 | REAR PLATE                | C-2306           |
|                         | SCCR*T3006Y* | SCREW                     | CRTS 3x6         |
|                         | SCCR*T3006B* | SCREW                     | CRTS 3x6 B       |
| FOOT CUSHION            | SCCR*T3008B* | SCREW                     | CRTS 3x8 B       |
|                         | SCCR*T3006B* | SCREW                     | CRTS 3x6 B       |
| TV3.B2880x3.B2403Ax4    | SCCR*M3006Y* | SCREW                     | CRMS 3x6 Y       |
| TRANSFORMER             | SCCRWM4008B* | SCREW                     | CRWMS 4x8 B      |
|                         | SCCB*R3008B* | SCREW                     | CRTS 3x8 B       |
|                         | SCCF*T3008W* | SCREW FLAT                | CRTS 3x8 W       |
|                         | 78C233101018 | SI-STEEL SHIELD           | C-2331           |
|                         | 94D175*****  | SPONGE,EVA                | D-175 11x11x25   |
| REAR PLATE              |              | STICKER                   | EL-008           |
| INSIDE CARTON           |              | STICKER                   | EL-009           |
|                         | 9903RDA975** | STYROFOAM                 | TZ-165-1-1       |
|                         | E53018M212** | TRANSFORMER               | E53018M212**     |
| POWER                   | 990130ULB*** | TUBE,SLEEVE               | 30Φ BLACK        |
|                         | 78C230701016 | UPPER COVER               | C-2307           |
|                         | 85A506*****  | WASHER,LED                | A-506            |
|                         |              | WASHER,PUSH SW            | 4TQF-13          |
|                         | 85A418*****  | WASHER,RCA                | A-418            |

## Parts List (2/5)

| SYMBOL  | PART NO.     | DESCRIPTION        | SPECIFICATION    |
|---|--------------|--------------------|------------------|
| <b>ACCESSORIES</b>  |              |                    |                  |
|   | 68DB25*****  | DB25 CABLE         | WGC-1            |
|   | 99ORDA975*** | OWER'S MANULAN     | RDA-975          |
|   | 9905RDA975** | WARRANTY STATEMENT |                  |
| <b>PCB B 2 8 8 0</b>  |              |                    |                  |
| C9  | 491021HREFDT | CAPACITOR CERAMIC  | 102/50V F/Z      |
| C34.35.36.37.38.39.40.97.101  | 491031HRZFDT | CAPACITOR CERAMIC  | 103/50V F/Z      |
| C11.12.13.102.103.104.128-133   | 490471HRKSdT | CAPACITOR CERAMIC  | 47P/50V SL/K     |
| C24.25.26   | 491011HRKSdT | CAPACITOR CERAMIC  | 100P/50V SL/K    |
| C14.56.57.61.62.66.67.71.72.76.77.81.82.105.<br>120.122.124.126.135.138-145 | 561041HRZFDT | CAPACITOR CERAMIC  | X7R 104/50V      |
| C114.115.116.117.118.119  | 401001H0511T | CAPACITOR ELEC     | 10U/50V          |
| C10.58.59.60.63-65.68-70.73-75.78-80.83-85                                  | 404701E0511T | CAPACITOR ELEC     | 47U/25V          |
| C121.123.125.127  | 401011E6311T | CAPACITOR ELEC     | 100U/25V         |
| C23   | 481001H0511T | CAPACITOR ELEC     | 10U/50V NP       |
| C1.2.3.4.5.6.8.52.53.54.55.96.100.134.137                                   | 484701E0811T | CAPACITOR ELEC     | 47U/25V NP       |
| C42.44.46.48.50.136   | 501021HRJENT | CAPACITOR MYLAR    | 102J/50V         |
| C27.28.29.30.31.86.87.88.89.98.99   | 501041HRJENT | CAPACITOR MYLAR    | 104J/50V         |
| C32   | 502241HRJEMT | CAPACITOR MYLAR    | 224J/50V MIN     |
| C33   | 503331HRJENT | CAPACITOR MYLAR    | 333J/50V         |
| C7  | 508231HRJENT | CAPACITOR MYLAR    | 823J/50V         |
| C41.43.45.47.49.51  | 503321HRJENT | CAPACITOR MYLAR    | 332J/50V         |
| C90.91.92.93.94.95  | 531722AWORKF | CAPACITOR PP-D     | 172/50V          |
| F1.2.3.4.5.6.EMIF1.2.3.4.5.6  | 21FILTER102* | CERAMIC FILTER     | 102              |
|   | 68DBR25MTKO* | DB25 JACK          | DBR25MTKO MALE   |
| D1.2.3.4.7  | 131N4007**** | DIODE              | 1N4007           |
| D5  | 131N4148**** | DIODE              | 1N4148           |
| Y1  | 73B3C2T7P5P8 | FERRITE BEAD       | 3.5x7.5x0.8      |
| U19.20.21.22.25.26  | 11NJU201AD*D | IC                 | NJU201AD         |
| U6.18   | 11NE5532AN*D | IC                 | NE5532AN         |
| U24   | 11NJM353D**D | IC                 | NJM353           |
| U11.12.13   | 11OPA2604APD | IC                 | OPA2604AP        |
| U2.3.4.5.7.8.9.10.14.23.42  | 11AD712***** | IC                 | AD712JN          |
| U15.16.17   | 11PCM1710U*S | IC SMT             | PCM1710U         |
|   | 60B2880***** | P.C.B              | B2880            |
| J13   | 68HSP246V634 | RCA JACK           | HSP-246V6-34 6P  |
| R135  | 300220C4TJ2T | RESISTOR CARBON    | 1/4W T 220       |
| R4.13.20.25.30.46.68.70.74  | 3002K2C4TJ2T | RESISTOR CARBON    | 1/4W T 2K2       |
| R11.45.49.82  | 3002K7C4TJ2T | RESISTOR CARBON    | 1/4W T 2K7       |
| R6.36.57.58.59.60.61  | 3004K7C4TJ2T | RESISTOR CARBON    | 1/4W T 4K7       |
| R99.107.118   | 3005K6C4TJ2T | RESISTOR CARBON    | 1/4W T 5K6       |
| R65.85.87.89.91.93.95.134   | 3006K8C4TJ2T | RESISTOR CARBON    | 1/4W T 6K8       |
| R7.8.9.10.98.108  | 30010KC4TJ2T | RESISTOR CARBON    | 1/4W T 10K       |
| R42.50.51.55.72.100   | 30012KC4TJ2T | RESISTOR CARBON    | 1/4W T 12K       |
| R48.78.79.80.81   | 30015KC4TJ2T | RESISTOR CARBON    | 1/4W T 15K       |
| R37.38.39.40  | 30018KC4TJ2T | RESISTOR CARBON    | 1/4W T 18K       |
| R41.43.52.56.71   | 30022KC4TJ2T | RESISTOR CARBON    | 1/4W T 22K       |
| R53.54.62.63.64.73.75.76.77.83.115  | 30047KC4TJ2T | RESISTOR CARBON    | 1/4W T 47K       |
| R5.12.21.26.31.35.44.67.69.97.106.109-114.117                               | 30100KC4TJ2T | RESISTOR CARBON    | 1/4W T 100K      |
| R116  | 30330KC4TJ2T | RESISTOR CARBON    | 1/4W T 330K      |
| R86.88.90.92.94.96  | 39033001MJ** | RESISTOR M.O.F     | 1W 330           |
| R1.2.15.16.17.18.22.23.28.29.32.33  | 324K02C4TF2T | RESISTOR METAL     | 1/4W T 4K02      |
| R3.14.19.24.34.47   | 325K36C4TF2T | RESISTOR METAL     | 1/4W T 5K36      |
| R27.101.102.103.104.105   | 326K04C4TF2T | RESISTOR METAL     | 1/4W T 6K04      |
| SW2.SW4 NO MONO NO  | 20S04P022BY* | SLIDE SWITCH       | SS004-P022BY-PF8 |
| SW1.SW3 NO OFF NO   | 20S04P223BS* | SLIDE SWITCH       | SS004-P223BS-PF8 |

## Parts List (3/5)

| SYMBOL                    | PART NO.     | DESCRIPTION         | SPECIFICATION |
|---------------------------|--------------|---------------------|---------------|
| Q7                        | 122SA970BL*T | TRANSISTOR          | 2SA970BL/GR   |
| Q8.9.10.11                | 122SC1815BLT | TRANSISTOR          | 2SC1815BL/GR  |
| Q1.2.3.4.5.6              | 122SC3327**T | TRANSISTOR          | 2SC3327       |
| J11                       | 66W504508R** | WAFER               | 5045-8P       |
| J1.3.4                    | 66W504504R** | WAFER               | 5045-4P       |
| J12                       | 66W504503R** | WAFER               | 5045-3P       |
| J2                        | 66W396302R** | WAFER               | 5045-2P       |
| D6                        | 13Z4P70P5*** | ZENER DIODE         | 4.7V/0.5W     |
| Z1                        | 13Z5P60P5*** | ZENER DIODE         | 5.6V/0.5W     |
| <b>PCB B 2 8 8 1</b>      |              |                     |               |
| C27                       | 492021HRZFDT | CAPACITOR CERAMIC   | 202/50V F     |
| C14.15                    | 490301HRKSDT | CAPACITOR CERAMIC   | 30P/50V SL    |
| C29-38.39-43              | 561041HRZFDT | CAPACITOR CERAMIC   | 104/50V       |
| C26                       | 404701E0511T | CAPACITOR ELEC      | 47U/25V       |
| C17                       | 401011E6311T | CAPACITOR ELEC      | 100U/25V      |
| C16                       | 482201H0811T | CAPACITOR ELEC      | 22U/50V NP    |
| B2881 J6 TO B2880 J2      | 66HD945***** | CONNECTOR           | ED-945 2P     |
| B2881 J3 TO B2880 J12     | 66HD757***** | CONNECTOR           | ED-757 3P     |
| B2881 J4 TO B2403A J11    | 66HDA42***** | CONNECTOR           | ED-A42 4P     |
| B2881 J5 TO B2882 J3      | 66HD948***** | CONNECTOR           | ED-948 3P     |
| B2881 J2 TO B2403A J1     | 66HDA43***** | CONNECTOR           | ED-A43 5P     |
| B2881 J1 TO B2403A J7     | 66HDA41***** | CONNECTOR           | ED-A41 6P     |
| Y1                        | 21CSA1200MTZ | CRYSTAL OSC CERAMIC | 12MHZ         |
| D25.26                    | 131N4148**** | DIODE               | 1N4148        |
| DIS2                      | 18SDC0311EWA | DISPLAY LED         | DC03-11EWA    |
| DIS1                      | 18SC0312EWA* | DISPLAY LED         | SC03-12EWA    |
| Q8                        | 11M51951BSLB | IC                  | M51951B       |
| U11                       | 11F16V8B15PD | IC                  | ATF16V8B      |
| U2                        | 1156A11251*D | IC                  | AOC 56A1125-1 |
| U18                       | 11BA618****D | IC                  | BA618         |
| C3.4.5.6.7.17             | 11CD74HC573E | IC                  | CD74HC573E    |
| U1                        | 1127C256R12D | IC                  | M27C256B      |
| U12.13.14.15              | 11DT5C114E*D | IC                  | DT5C114E      |
| U16                       | 11TC74HC02AP | IC                  | 74HC02AP      |
| U8.9                      | 1174HC244AED | IC                  | 74HC244AP     |
| U10                       | 1193C46****D | IC                  | 93C46         |
| D5.6.7.8.9.10.11.24       | 18L3XAT***** | LED                 | L-3XAT        |
| D16.17.18.20.21.22.23.33  | 18L934IT**** | LED                 | L-934IT       |
| 1.2.3.4.19.27.28.32       | 18L3XGT***** | LED                 | L-3XGT        |
| D12.13.14.15              | 18L937EYC*** | LED                 | L-937EYC      |
| B2881 P2 TO B2403A B      | W100726400O* | MULTI THREAD        | 1007#26 400MM |
| B2881 C26 + TO B2881 Q8.3 | W100726210** | MULTI THREAD        | 1007#26 210MM |
| B2881 D31 + TO B2881 +5V  | W100726030** | MULTI THREAD        | 1007#26 30MM  |
|                           | 60B2881***** | P.C.B               | B2881         |
| R2-16.32.38.39.42         | 300472C4TJ2T | RESISTOR CARBON     | 1/4W T 470    |
| R20.21.22.23.24.25.26.45  | 30001KC4TJ2T | RESISTOR CARBON     | 1/4W T 1K     |
| R17.18.19                 | 3004K7C8TJ2T | RESISTOR CARBON     | 1/8W T 4K7    |
| R27.28.29                 | 3005K6C8TJ2T | RESISTOR CARBON     | 1/8W T 5K6    |
| R33.34                    | 30010KC8TJ2T | RESISTOR CARBON     | 1/8W T 10K    |
| R1                        | 30022KC8TJ2T | RESISTOR CARBON     | 1/8W T 22K    |
| R35.36                    | 30022KC8TJ2T | RESISTOR CARBON     | 1/8W T 100K   |
| R37                       | 30001MC8TJ2T | RESISTOR CARBON     | 1/8W T 1M     |
| B2881 Q7(E) TO R40        | 3002K2C4TJ5B | RESISTOR CARBON     | 1/4W T 2K2    |
| 30.31                     | 29C44730807J | RESISTOR NETWORKS   | 47K x 7       |
| U1                        | 10A28PBD**** | SOCKET,IC           | 28P Pith 2.54 |
| U11                       | 10A20PBD**** | SOCKET,IC           | 20P Pith 2.54 |
| SW1-10.SW12.13            | 20GB3F1050** | TACT SWITCH         | B3F-1050      |

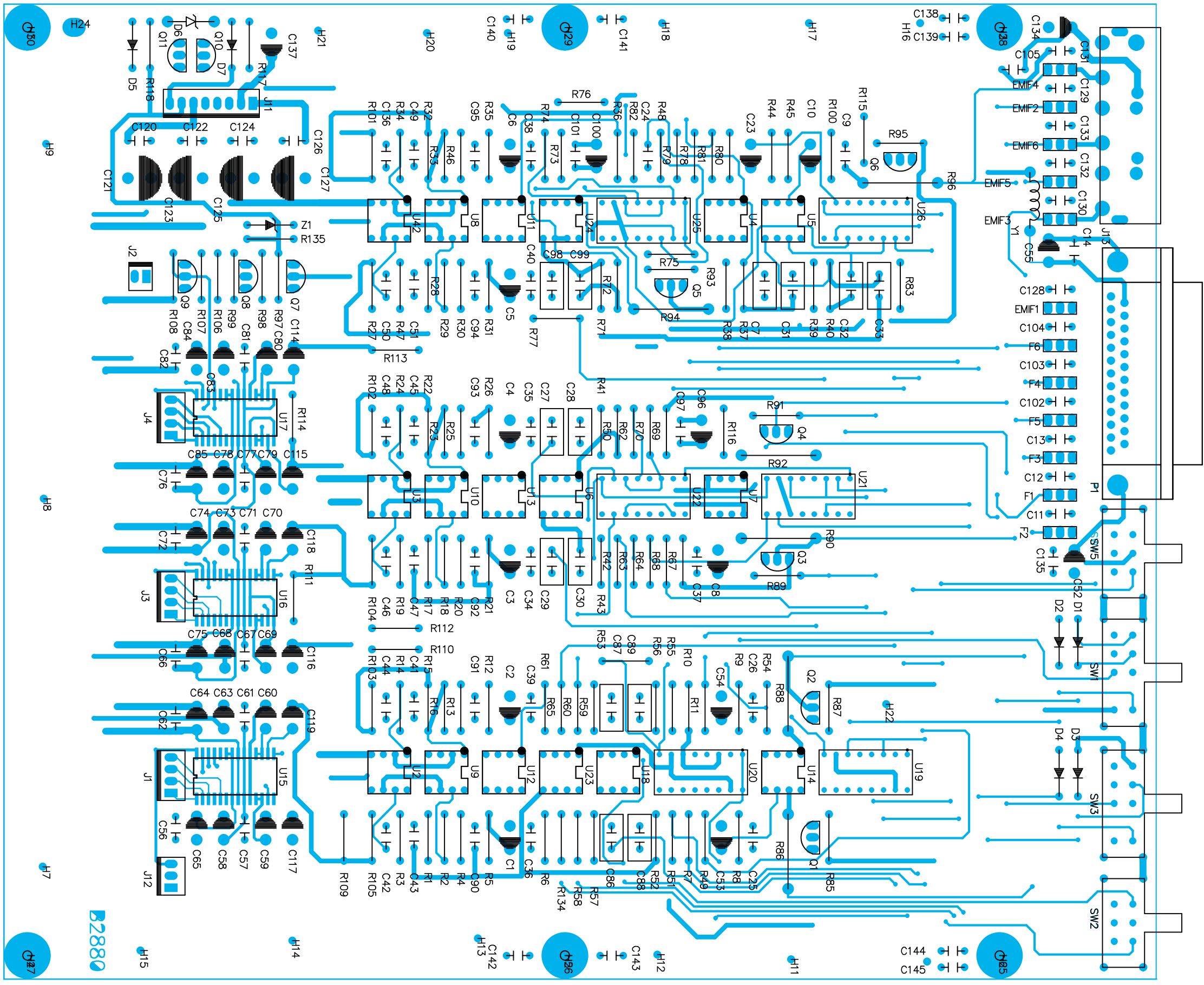
## Parts List (4/5)

| SYMBOL  | PART NO.     | DESCRIPTION           | SPECIFICATION      |
|---|--------------|-----------------------|--------------------|
| Q1.5.6  | 122SC2235Y*T | TRANSISTOR            | 2SC2235Y           |
| Q2.3.4  | 122SC2240BLT | TRANSISTOR            | 2SC2240BL/GR       |
| P2  | 31005K06H*** | TVR                   | 6Φ H-TYPE 5K       |
| <b>PCB B 2 8 8 2</b>                          |              |                       |                    |
| C11   | 401001H0511T | CAPACITOR ELEC        | 10U/50V            |
| C3.4.16                                       | 401011C6311T | CAPACITOR ELEC        | 100U/16V           |
| C17.19  | 402211E8115T | CAPACITOR ELEC        | 220U/25V           |
| C1  | 482211E1020T | CAPACITOR ELEC        | 220U/25V NP        |
| C9.10.12                                      | 401021E1220B | CAPACITOR ELEC        | 1000U/25V          |
| C5.6.8  | 404721E1831B | CAPACITOR ELEC        | 4700U/25V          |
| C7.13.14.15.18                                | 522242EWCRKF | CAPACITOR MPP-C       | 0.22K/250V         |
| C2  | 521042CWORFK | CAPACITOR MPP-D       | 0.1/160V           |
| B2882 J4 TO B2880 J11                         | 66HDA40***** | CONNECTOR             | ED-A40 8P          |
| D3.5  | 131N4007**** | DIODE                 | 1N4007             |
| D1.2  | 13S4VB20**** | DIODE                 | S4VB20             |
| F1-F3   | 67A05*****T  | FUSE HOLDER           | PFC5000-0202 5Φ    |
| D1  | 76H02500129* | HEAK SINK             | H-025              |
| Q3  | 76H04200127* | HEAT SINK             | H-042              |
| U3.4  | 76H522000134 | HEAT SINK             | H-522              |
| U1  | 76H521000135 | HEAT SINK             | H-521              |
| U2  | 117805CT***D | IC                    | 7805CT             |
| U1  | 11AN7805***D | IC                    | AN7805             |
| U3  | 11AN7815***D | IC                    | AN7815             |
| U4  | 11AN7915***D | IC                    | AN7915             |
|   | 60B2882***** | P.C.B                 | B2882              |
| R2  | 30047KC4TJ2T | RESISTOR CARBON       | 1/4W T 47K         |
| R1  | 30150KC4TJ2T | RESISTOR CARBON       | 1/4W T 150K        |
| R5  | 300100C2TJ** | RESISTOR CARBON       | 1/2W T 100         |
| R4  | 302P2KC2TJ** | RESISTOR CARBON       | 1/2W T 2K2         |
| R3  | 39001K01MJ** | RESISTOR M.O.F        | 1W 1K              |
| U1.3.4  | SCCR*T3008Y* | SCREW                 | CRTS 3x8 Y         |
| Q3  | SCR*T3006Y** | SCREW                 | CRTS 3x6 Y         |
| H025  | SCCR*T3015Y* | SCREW                 | CRTS 3x15 Y/B      |
| Q1  | 122SC1815BLT | TRANSISTOR            | 2SC1815BL/GR       |
| Q2  | 122SC2235Y*T | TRANSISTOR            | 2SC2235Y           |
| Q3  | 122SB633E**B | TRANSISTOR            | 2SB633E            |
| J5  | 66W504502R** | WAFER                 | 5045-2P            |
| J3  | 66W504503R** | WAFER                 | 5045-3P            |
| J1  | 66W396302R** | WAFER                 | 3963-2P            |
| J2  | 66W396303R** | WAFER                 | 3963-3P            |
|   | SCWSY3Φ****  | WASHER,SPRING         | 3Φ                 |
| D4  | 13Z4P70P5*2T | ZENER DIODE           | 4.7V/0.5W          |
| <b>PCB B 4 0 3 B</b>                          |              |                       |                    |
| C2.3.8.10-43.45.47-62.64.67-70.76.78-81.86.87 | 561041HCZFST | CAPACITOR CERAMIC SMT | 104/50V 0805       |
| C84.85  | 541032EWCRKF | CAPACITOR PS-C        | 0.01/100V          |
| EMIF1.EMIF5                                   | 21FILTER101* | CERAMIC FILTER        | 101                |
| EMIF2.EMIF3.EMIF4                             | 21FILTER104* | CERAMIC FILTER        | 104                |
| L1-L3   | 73C047UH**** | CHOKE                 | 47uH               |
| B2403A J2 TO B2882 J5                         | 66HD578***** | CONNECTOR             | ED-578 2P          |
| B2403A (J4)(J5)(J6) TO B2880(J1)(J3)(J4)      | 66HD870***** | CONNECTOR             | ED-870 4P          |
| OSC1  | 17OSC33MHZ*B | CRYSTAL               | 33MHz              |
| D2.3.4.20.11.12.13                            | 131N4148**** | DIODE                 | 1N4148             |
| Y1.2.3.8                                      | 73B3C2T7P5P8 | FERRITE BEAD          | 3.5T x 7.5Φ x 0.8M |
| U1  | 11CSB8412CP* | IC                    | CSB8412-CP         |
| U2  | 11ZR38500PQS | IC SMT                | ZR38500            |
| U3-U5   | 11AS7C25620S | IC SMT                | AS7C256-20JC       |

## Parts List (5/5)

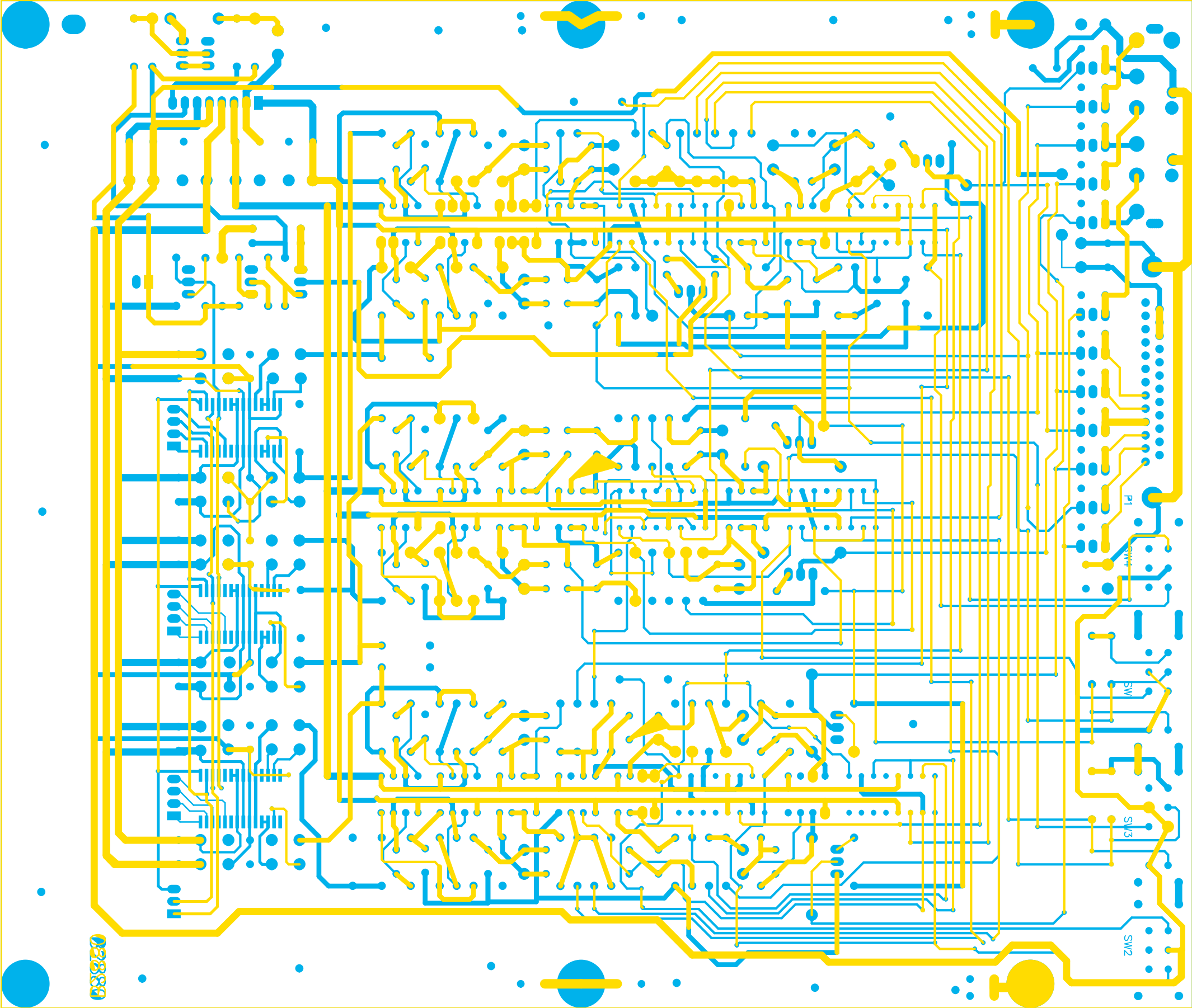
| SYMBOL              | PART NO.     | DESCRIPTION         | SPECIFICATION |
|---------------------|--------------|---------------------|---------------|
| U6                  | 1174HC123DTS | IC SMT              | 74HC123D      |
| U7                  | 1174HC595DTS | IC SMT              | 74HC595D      |
| U8                  | 1174HC74DT*S | IC SMT              | 74HC74D       |
| U9.10.15            | 1174HC04DT*S | IC SMT              | 74HCU04D      |
| U11                 | 1174HC02DT*S | IC SMT              | 74HC02D       |
| U17                 | 1174HC125DTS | IC SMT              | 74HC125D      |
| U18                 | 1174HC08DTS  | IC SMT              | 74HC08D       |
| D1                  | 18L32HD****  | LED                 | L-32HD 3Φ     |
| IR1                 | 14TORX176*** | OPTICAL RECIEVER    | TORX176       |
|                     | 60B2403A**** | P.C.B               | B2403B        |
| R44 UP              | 87010119**** | PIN                 | 1x1x19        |
| J8.9                | 680501040YG* | RCA JACK            | 0501040-YG    |
| R20.21              | 300010C80805 | RESISTOR CARBON SMT | 1/8W 10       |
| R34.38              | 300075C80805 | RESISTOR CARBON SMT | 1/8W 75       |
| R7-R18              | 300100C80805 | RESISTOR CARBON SMT | 1/8W 100      |
| R1.2.22.23.28-30.42 | 30001KC80805 | RESISTOR CARBON SMT | 1/8W 1K       |
| R44                 | 3003K3C80805 | RESISTOR CARBON SMT | 1/8W 3K3      |
| R36.40              | 3004K7C80805 | RESISTOR CARBON SMT | 1/8W 4K7      |
| R3.5.6.37.41        | 30010KC80805 | RESISTOR CARBON SMT | 1/8W 10K      |
| R4.35.39.50         | 30022KC80805 | RESISTOR CARBON SMT | 1/8W 22K      |
| R43                 | 30100KC80805 | RESISTOR CARBON SMT | 1/8W 100K     |
| R48                 | 30001MC80805 | RESISTOR CARBON SMT | 1/8W 1M       |
| R49                 | 3004M7C80805 | RESISTOR CARBON SMT | 1/8W 4M7      |
| C1.5                | 531031HCZFST | RESISTOR CARBON SMT | 103/50V 0805  |
| C4                  | 564731HCZFST | RESISTOR CARBON SMT | 473/50V 0805  |
| C73.75              | 490101HCJNST | RESISTOR CARBON SMT | 10P/50V 0805  |
| C66                 | 444R71H0511T | RESISTOR ELEC       | 4.7U/50V KULR |
| C6.7.44.46.63       | 403301C0511T | RESISTOR ELEC       | 33U/16V       |
| CX1.CX4-CX6.77      | 404701E0511T | RESISTOR ELEC       | 47U/25V       |
| C9                  | 402211C8115T | RESISTOR ELEC       | 220U/16V      |
| C72.74              | 484701E0811T | RESISTOR ELEC       | 47U/25V NP    |
| Q1                  | 122SC2458GRT | TRANSISTOR          | 2SC2458GR     |
| J11                 | 66W504504R** | WAFER               | 5045-4P       |
| J1                  | 66W504505R** | WAFER               | 5045-5P       |
| J7                  | 66W504506R** | WAFER               | 5045-6P       |

B2880 Top Side



PCB Assembly

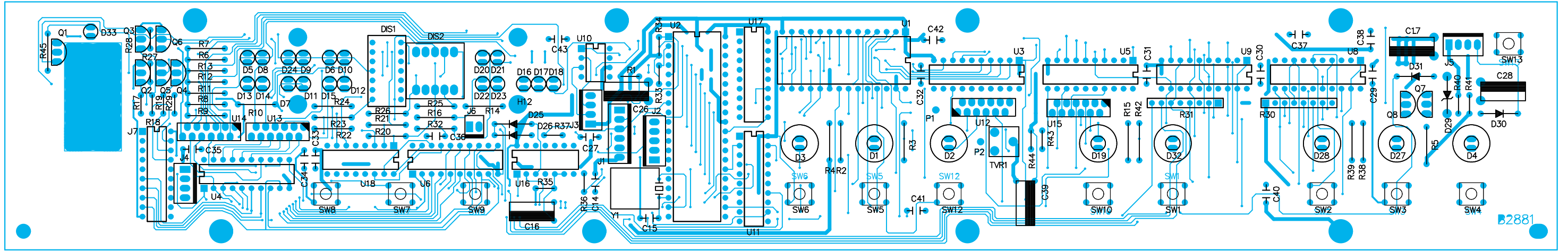
B2880 Patterns of Top and Bottom



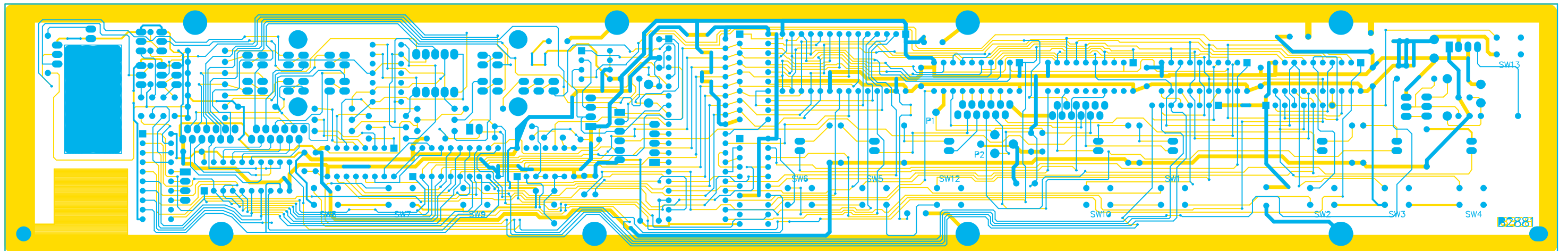


# PCB Assembly

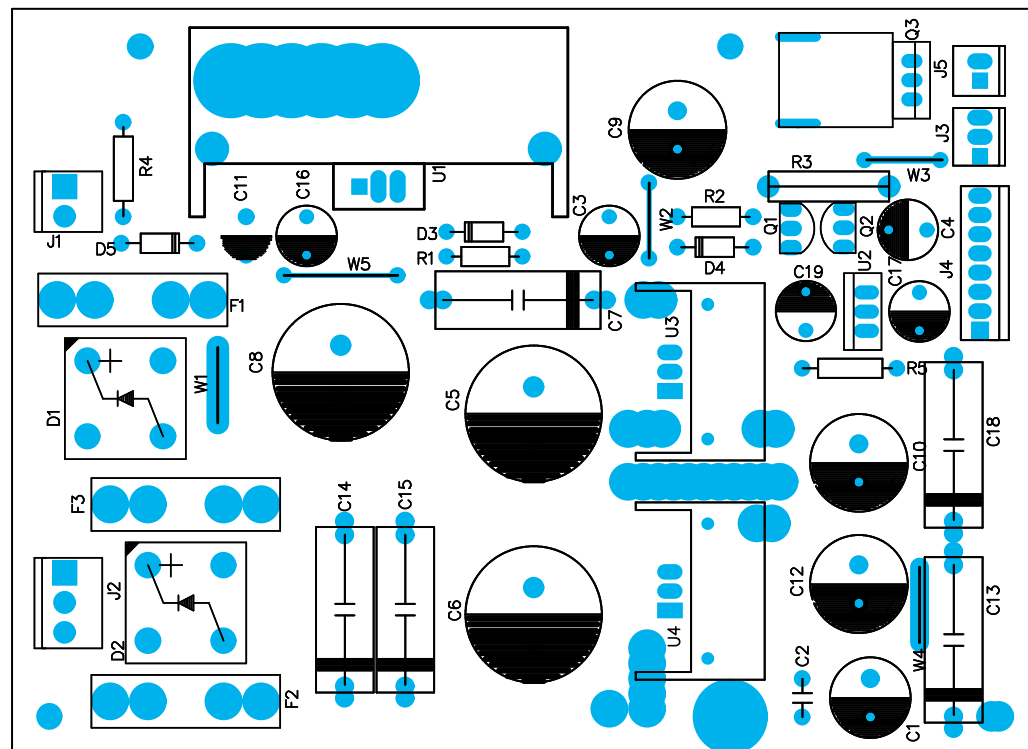
## B2881 Top Side



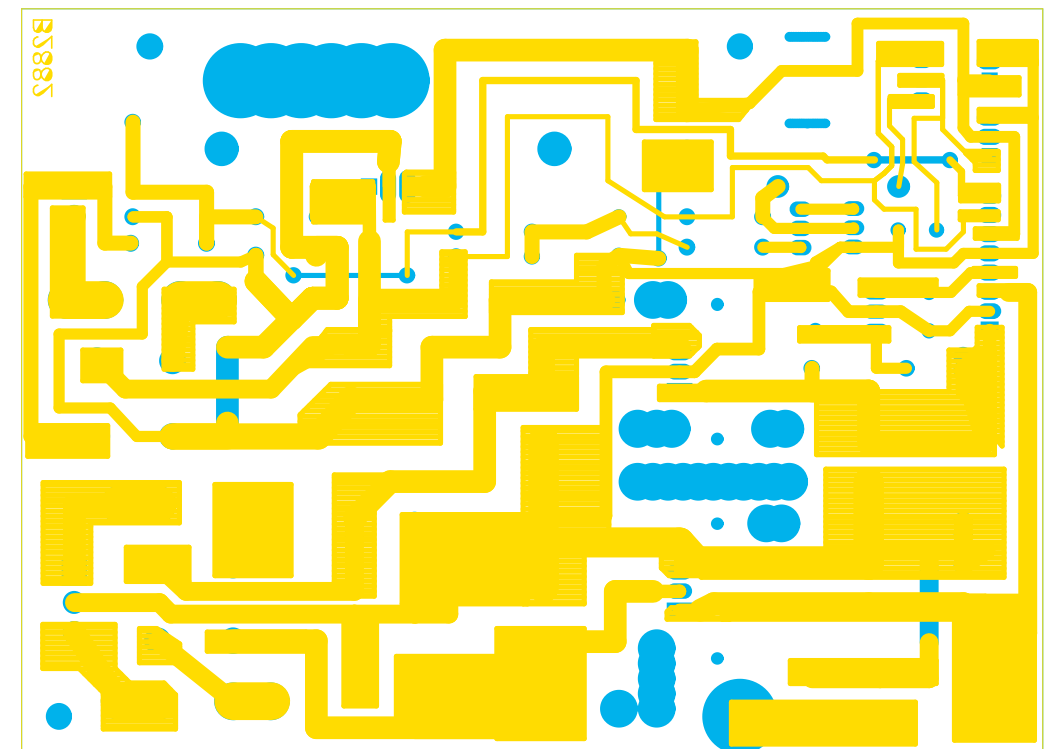
## B2881 Patterns of Top and Bottom



## B2882 Top Side

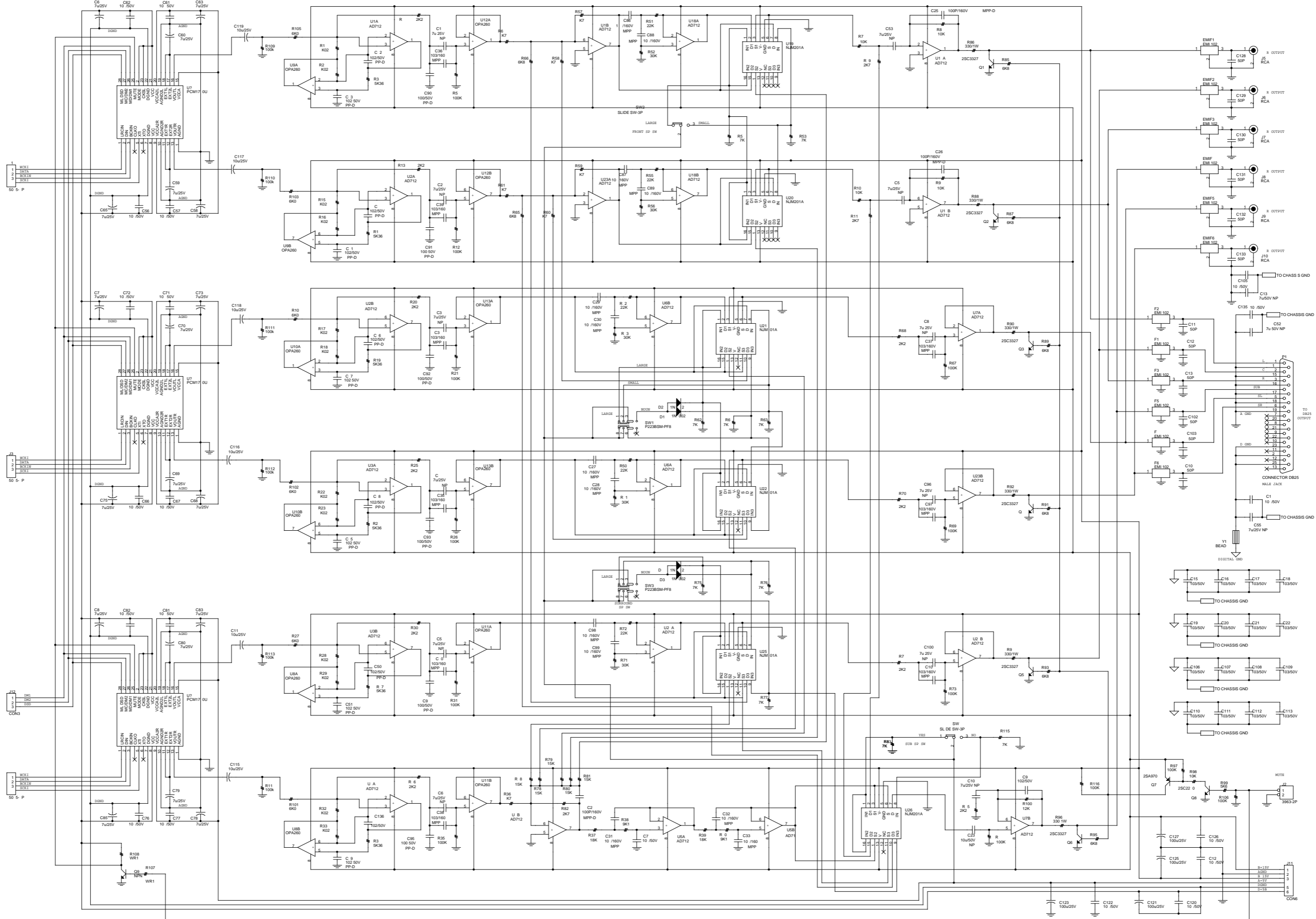


## B2882 Patterns of Top and Bottom



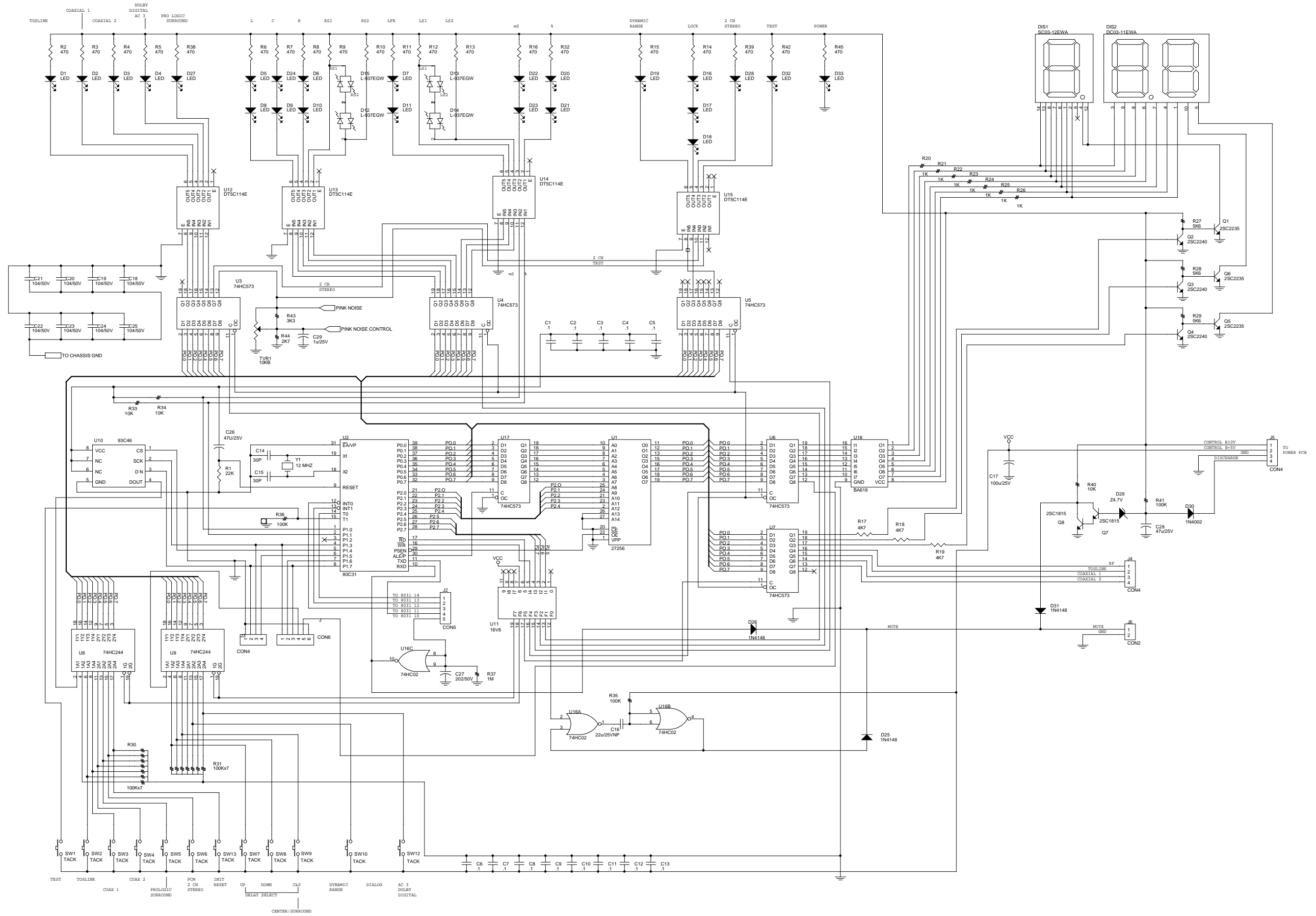
# Schematic Diagram

# B2880



# Schematic Diagram

# B2881



Memo

# Schematic Diagram

# B2882

