

Technical Manual

STEREO SEMI-AUTOMATIC BELT DRIVE TURNTABLE

RP-2400

RP-4400

TABLE OF CONTENTS

| | |
|--|----|
| Adjustment | 2 |
| Troubleshooting Guide | 3 |
| Specifications | 4 |
| Repair Parts List | 4 |
| Disassembly Diagram | 5 |
| Schematic Diagram | 9 |
| Power Supply Circuit Board Diagram | 10 |
| Control Circuit Board Diagram | 10 |

| |
|---|
| <p>Serial No. Beginning RP-2400: Y9411501 RP-4400: G9417001</p> |
|---|

THE ROTEL CO., LTD.
ROTEL ELECTRONICS CO., LTD.
ROTEL OF AMERICA, INC.

1-368 OHOKAYAMA, MEGURO KU, TOKYO 152, JAPAN
2ND FLOOR, EVERGLORY BLDG., NO. 305, SECTION 3,
NANKING E. ROAD, TAIPEI, TAIWAN, REPUBLIC OF CHINA

1055 SAW MILL RIVER ROAD, ARDSLEY, N.Y. 10502, U.S.A.

I. AUTO-RETURN POINT ADJUSTMENT

A. When Auto-return Point Is Slightly Deviated:

1. If stylus leaves the disk after passing the designated spot, turn the adjusting screw clockwise.
2. If stylus leaves the disk before reaching the designated spot, turn the adjusting screw counterclockwise.

N.B. Auto-return function is normal when rejection point is within a range designated on the test record RG-667 (JVC).

B. When Auto-return Point Is Largely Deviated:

1. Screw in the adjusting screw midway.
2. Loosen two set-screws on restore lever. Position the lever so that the distance between the actuating arm and the tip of restore lever is about 4mm. Fix the lever only provisionally by lightly tightening the set-screws. Then, make adjustment as described in phase A above.
3. Secure the set-screws firmly after completing adjustment.

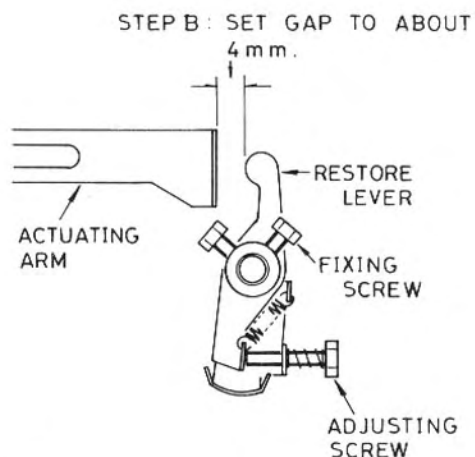


Fig. 1 Auto-return Point Adjustment

II. TONE ARM RESTORATION ADJUSTMENT

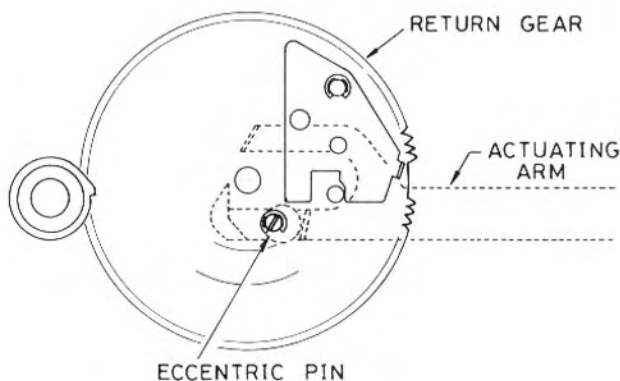
When the tone arm does not return all the way to its rest or when return stroke is excessive and the arm forcibly strikes the rest, make adjustment as follows:

1. Gently move the tone arm toward the center of the turntable platter until the arm comes to a complete stop.
2. Gently turn the return gear counterclockwise by hand. The tone arm will rise and begin to move toward its rest. With approximately one-half a rotation (180°) of the return gear, tone arm reaches its outermost position (see Fig. 2).
3. With tone arm in that position, rotate the eccentric pin either to the right or left to adjust contact stroke between the pin and the bent portion of the actuating arm.

N.B. The adjustment is to be made with the turntable platter removed.

To remove the turntable platter:

- 1) Remove rubber mat.
- 2) Remove rubber belt from the pulley with your index finger inserted through a hole on the platter. (For model RP-2400, be sure to set the speed selector at "33" when doing this.)
- 3) Lift out the platter from the center shaft.
- 4) Reverse the procedure in installation.



THIS ILLUSTRATION SHOWS THE RETURN GEAR REVOLVED 180° FROM THE NORMAL LOCATION.

Fig. 2 Tone Arm Restoration Adjustment

III. ADJUSTMENT OF TONE ARM HEIGHT IN RETURN ACTION

Tone arm, when returning automatically to rest, normally points slightly upward (headshell is slightly higher than level). If the inclination of tone arm is excessive, either upward or downward, follow the procedures below.

1. Lift the tone arm from its rest and place it on the top of the elevation arm. Press reject button. Gently rotate the turntable clockwise by hand, and the elevation arm will begin to rise gradually. Stop turning turntable when elevation arm stops rising.

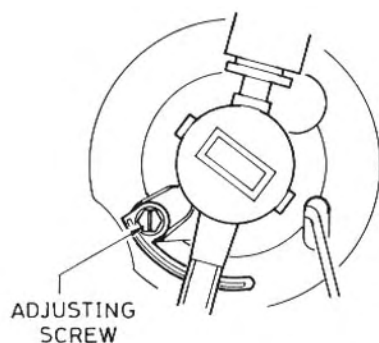


Fig. 3 Tone Arm Height Adjustment

- Maintaining this state, rotate the adjusting screw (Fig. 3) so that distance between stylus tip and disk surface is about 6mm: turn the screw counterclockwise to raise the position of stylus tip, and clockwise to lower it.
- After completing adjustment, gently rotate the turntable clockwise again to lower the elevation arm to the original position.

IV. POSITIONING OF PULLEY WHEN REPLACING PULLEY OR MOTOR (FOR RP-2400 ONLY)

Set speed selector to "33." Install pulley making sure that its top surface is at exactly the same level as that of the belt guide (see Fig. 4). After the pulley is secured, turn on the motor and check that the belt is not touching the guide.



Fig. 4 Positioning of Pulley

V. SPEED ADJUSTMENT (FOR RP-4400 ONLY)

- Set the speed-fine-adjust control (located on the side of base) to mid-position.
- Adjust by turning potentiometer on the control PCB so that specified speed is obtained (the stroboscopic marks on the rim will stand still when speed is correct). Use potentiometer VR1 for 45rpm speed adjustment and VR2 for 33 1/3 rpm speed.

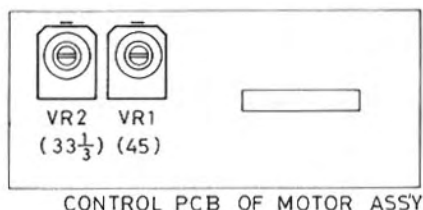


Fig. 5 Speed Adjustment for RP-4400

Troubleshooting Guide

A. Turntable does not rotate even when tone arm is positioned over the lead groove.

RP-2400:

- Power switch is faulty.
- Power cord is faulty.
- Motor is faulty.

RP-4400:

- Power switch is faulty.
- Power cord is faulty.
- Power transformer is faulty.
- Fuse is blown or bad contact of fuse.
- Motor assembly is faulty.
 - Control circuit (including transistor X1) is faulty or
 - Motor is faulty.

B. Tone arm does not return to its rest when reject button is pressed.

- Movement of actuating arm is incorrect.
- Return gear (R gear) and turntable gear (TT gear) are not properly engaged.
 - Mesh between R gear and TT gear is improper.*1
 - Gear(s) is worn out.
- Protruded portion of TT gear is worn out.

C. Tone arm returns to its rest before reaching the end of play.

- Restore-lever fitting position is incorrect.
 - Distance between restore lever and actuating arm is too small (Refer to section I for proper adjustment.)

N.B. The same symptom may be seen when the unit is tilted to the left (as you see the front of the unit).

D. Tone arm does not return to its rest at the end of play.

- Restore-lever fitting position is incorrect.
 - Distance between restore lever and actuating arm is too large. (Refer to section I for proper adjustment.)

E. Abnormal sound is generated during return of tone arm.

- Gear engagement is faulty.
 - Mesh between gears is improper.
 - Gear(s) is worn out.
- Clutch plate does not work correctly.
- Clutch plate's contact surface which meets protruded portion of TT gear is deformed.

F. Pickup descends onto the disk too abruptly when the cueing lever is lowered.

- Elevation shaft is out of oil.*2
- Elevation spring is faulty.
- Stylus force is excessive.

Notes:

- *1 Distance between the center of R gear and the center of TT gear should be 47mm. R gear is correctly in the original position when the center of its cut portion aligns with the center of TT gear.

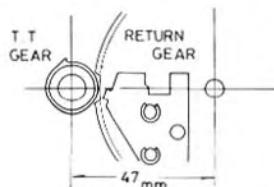


Fig. 6

- *2 For lubrication of elevation shaft, use silicon oil of 100000 CS unit.

Specifications

RP-2400

RP-4400

MOTOR AND TURNTABLE

| | | |
|---------------------------|-------------------------------------|---|
| Motor | 4-pole hysteresis synchronous motor | FG DC servo motor |
| Drive | Belt-drive system | |
| Speed | 33 1/3 rpm and 45 rpm | |
| Wow and Flutter | 0.06% (JIS WRMS) | 0.04% (JIS WRMS) |
| Signal-to-Noise Ratio | | |
| IEC-B | More than 55dB | More than 58dB |
| DIN-B | More than 65dB | More than 68dB |
| Platter | Aluminum diecast, 310mm diameter | Aluminum diecast, 310mm diameter with strobe rim |

TONE ARM

| | | |
|-------------------------------------|---|----------------|
| Type | Static-balanced straight pipe arm with plug-in headshell, oil-damped cueing device, direct-readout stylus gauge, counter weight, anti-skating device | |
| Overhang | 17mm | |
| Tracking Error | +2.5° to -1.5° | +2.4° to -1.2° |
| Suitable Cartridge Weight | Minimum 4g, Maximum 12g | |
| Suitable Stylus Pressure | Minimum 1g, Maximum 3g | |

MISCELLANEOUS

| | | |
|-----------------------------|-----------------|-----------------|
| Power Requirement | | 120V/60Hz |
| Power Consumption | 9 watts maximum | 3 watts maximum |

Note: Specifications subject to change for improvement without prior notice.

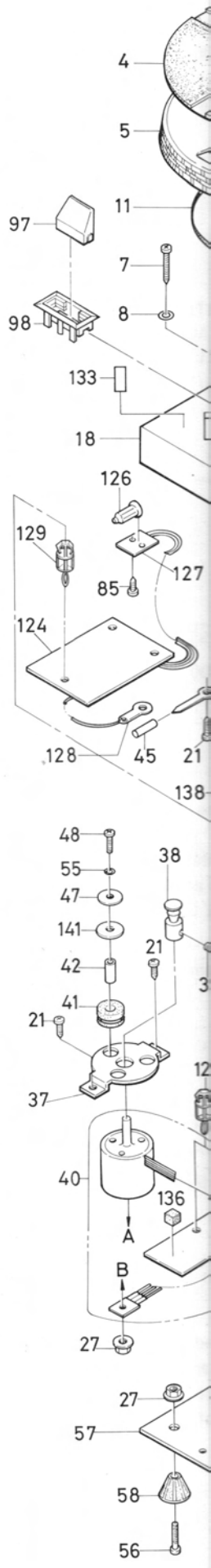
Repair Parts List

| Schematic Location | Description | Part No. |
|--------------------------------------|-----------------------------|-----------|
| Applicable to RP-4400 Only | | |
| X1 | Transistor, 2SC1449 | 301201208 |
| IC1 | IC, CX-065A | 303452233 |
| D1 | Diode, 1S953 (Si) | 300111011 |
| D901 | Rectifier, S1RBA10 | 300919041 |
| ZD1 | Zener Diode, RD6.8E | 300313051 |
| VR1 | Potentiometer, 20KB | 092045114 |
| VR2 | Potentiometer, 50KB | 092045115 |
| C901 | Capacitor, LH, 0.047 | 470101130 |
| F901 | Fuse, 0.1A | 341222010 |
| | Clip, Fuse | 648211146 |
| | Power Supply PC Board Ass'y | 092041128 |
| | Neon Lamp PC Board Ass'y | 092041133 |
| Common to RP-2400 and RP-4400 | | |
| | Screw, M2.6 x 15mm | 092017024 |
| | Screw, M2.6 x 10mm | 092017025 |
| | Nut, Circular, M2.6 | 092017006 |
| | Washer, (Hard PVC) | 092017005 |

Disassembly Diagram

RP-4400

| Key No. | Description | Part No. | Key No. | Description | Part No. |
|---------|---|-----------|---------|---|-----------|
| 1. | Plate, Hinge Mtg | 092041030 | 75. | Elevation Spring | 092046507 |
| 2. | Screw, M4 x 8mm (BLZ) | 707224008 | 76. | Knob Ass'y, IFC | 092041023 |
| 3. | Dust Cover | 092041029 | 77. | Screw, $\varnothing 3 \times 10$ mm (BLZ) | 770911255 |
| 4. | TT Sheet | 672301115 | 78. | Lock Plate | 092041059 |
| 5. | Turntable | 092041037 | 79. | Rating Label | 136001464 |
| 6. | EP Adapter | 648211249 | 80. | Not used | - |
| 7. | Screw, 3 x 16mm, B-tight | 092047016 | 81. | Spring | 092046518 |
| 8. | Washer, $\varnothing 3.2 \times \varnothing 10 \times t1$ | 770500069 | 82. | Spring, IFC | 092046519 |
| 9. | Screw, 3 x 8mm, Tapping-I | 092047018 | 83. | Cam, IFC | 092041062 |
| 10. | Shaft, Adapter | 092047003 | 84. | Rubber Bush | 092046520 |
| 11. | Belt | 671011015 | 85. | Screw, 2.6 x 6mm, Tapping-II | 723202606 |
| 12. | Control Base | 092041076 | 86. | Clutch | 092041063 |
| 13. | Variable Resistor, 5KB | 515321126 | 87. | Clutch Guide | 092041064 |
| 14. | Switch, Push 1 key | 092046524 | 88. | Arch E-ring, $\varnothing 3$ | 770500064 |
| 15. | Spring Washer, SSW-3 | 770500070 | 89. | Return Gear Ass'y (1) | 092046521 |
| 16. | Knob, Speed Control | 092041077 | 90. | Fiber Washer, $\varnothing 5 \times \varnothing 10 \times t0.5$, (Thrust adjust) | 770500066 |
| 17. | Washer, $\varnothing 3.2 \times \varnothing 8 \times t0.5$ | 770500060 | 91. | Eccentric Pin, $\varnothing 8$ | 092047006 |
| 18. | Cabinet | 092041042 | 92. | GS Stud, $\varnothing 7$ | 092047007 |
| 19. | Screw, M3 x 6mm | 703203006 | 93. | Shaft, Eccentric | 092047008 |
| 20. | Not used | - | 94. | GS Arm | 092041065 |
| 21. | Screw, 3 x 8mm, B-tight | 092047017 | 95. | GS Spring | 092046522 |
| 22. | Pushbutton Ass'y | 092041078 | 96. | Arch E-ring, $\varnothing 4$ | 770500065 |
| 23. | Pushbutton | 116210070 | 97. | Prism | 092041013 |
| 24. | E-ring, $\varnothing 3$ | 770500039 | 98. | Holder, Prism | 092041083 |
| 25. | Reject Shaft | 092046525 | 99. | Not used | - |
| 26. | Spring, Reject Button | 092046505 | 100. | Flange Screw, M3 x 14mm | 709203014 |
| 27. | Flange Nut, M3 | 770402215 | 101. | Cord Stopper | 675201111 |
| 28. | E-ring, $\varnothing 3.2$ | 770500045 | 102. | Metal Fittings | 092041066 |
| 29. | Kick Lever | 092041004 | 103. | Signal Cord Ass'y | 791001143 |
| 30. | Spring, Return | 092046513 | 104. | Tube, Varnish, $\varnothing 3 \times 14$ mm (L) | 792011207 |
| 31. | TT Shaft Ass'y | 092046514 | 105. | Lug Terminal | 645702002 |
| 32. | Bearing Ass'y, TT Shaft | 092046515 | 106. | Cover, Shield | 092041068 |
| 33. | Stopper | 092047005 | 107. | Circular External Ring, CSTW-3.5 | 770911256 |
| 34. | Top Board Ass'y | NSP | 108. | Spacer | 092047009 |
| 35. | Screw, 3 x 8mm, Tapping-I | 092047018 | 109. | Actuating Arm Ass'y | 092041069 |
| 36. | Washer, $\varnothing 3.2 \times \varnothing 10 \times t0.8$ | 770500059 | 110. | Holder, Actuating Arm | 092041070 |
| 37. | Bracket, Motor | 092041049 | 111. | Seesaw Base Ass'y | 092041071 |
| 38. | Pulley | 651110021 | 112. | Seesaw Arm Ass'y | 092041072 |
| 39. | Set Screw, M2 x 3mm | 770911257 | 113. | Eccentric Pin, $\varnothing 8$ | 092047010 |
| 40. | Motor Ass'y | 260101127 | 114. | Spring, Switch Arm | 092046523 |
| 41. | Cushion Rubber | 672200880 | 115. | Washer, $\varnothing 5 \times \varnothing 10 \times t0.2$, (BsP) | 770500068 |
| 42. | Column | 092047011 | 116. | Lug, Wire Clamp | 770031339 |
| 43. | Not used | - | 117. | Tube, $\varnothing 2 \times 35$ mm (L) | 792011208 |
| 44. | Power Supply Cord | 796301151 | 118. | Micro Switch | 615212279 |
| 45. | Tube, $\varnothing 3 \times 60$ mm (L), (UL/CSA) | 792011206 | 119. | Switch Arm Ass'y | 092041073 |
| 46. | Lug, Wire Clamp | 770031333 | 120. | Switch Cover | 092041084 |
| 47. | Washer, $\varnothing 3.2 \times \varnothing 13 \times t0.8$ | 770500058 | 121. | Not used | - |
| 48. | Screw, M2.6 x 12mm | 703202612 | 122. | Flange Nut, M3 | 770402215 |
| 49. | Fiber Washer, $\varnothing 5 \times \varnothing 10 \times t0.2$, (Thrust adjust) | 770500062 | 123. | Not used | - |
| 50. | Fiber Washer, $\varnothing 5 \times \varnothing 10 \times t1.0$, (Thrust adjust) | 770500063 | 124. | PC Board, Power Supply | 092041085 |
| 51. | E-ring, $\varnothing 4$ | 770500040 | 125. | Power Transformer | 201001494 |
| 52. | Switch Lever (A) | 092041050 | 126. | Neon Lamp | 092043112 |
| 53. | Square Nut, M3 | 770911254 | 127. | PC Board, Neon Lamp | 092041086 |
| 54. | Screw, M3 x 8mm | 703203008 | 128. | Wire Ass'y Chassis Ground | 791001147 |
| 55. | Spring Washer, $\varnothing 2.6$ | 770500071 | 129. | Support, PC Board | 092046542 |
| 56. | Screw, M3 x 14mm | 703203014 | 130. | Cueing Arm | 092041018 |
| 57. | Bottom Cover | 092041053 | 131. | Cueing Lever | 092041074 |
| 58. | Foot | 673402016 | 132. | Tone Arm Base Plate | 092041075 |
| 59. | Wood Screw, 3.1 x 16mm | 730203116 | 133. | Label, Strobe | 880001245 |
| 60. | Hinge Ass'y | 092041030 | 134. | Cueing Cap | 092041021 |
| 61. | Panel, Control | 092041080 | 135. | E-ring, $\varnothing 2$ | 770500035 |
| 62. | Wedge | 092041081 | 136. | Sponge | 990201312 |
| 63. | Column, Power Trans Mtg | 770911249 | 137. | Tone Arm Ass'y | 902111125 |
| 64. | Screw, 3 x 25mm, B-tight | 092047019 | 137-1. | Weight Ass'y | 092011041 |
| 65. | Reject Lever | 092041051 | 137-2. | Head Shell | 150011255 |
| 66. | Washer, $\varnothing 3.2 \times \varnothing 8 \times t0.5$ | 770500060 | 138. | Screw, 3 x 12mm, C-tight | 763203012 |
| 67. | Spring, Elevation Arm | 092046509 | 139. | Not used | - |
| 68. | Reject Spring | 092046516 | 140. | Screw, M3 x 18mm | 703203018 |
| 69. | Arm Rest Ass'y | 092041056 | 141. | Fiber Washer, $\varnothing 4.6 \times \varnothing 13 \times t0.8$ | 770500061 |
| 70. | Base, Arm Rest | 092041057 | 142. | Teethed Washer, M10 | 770500075 |
| 71. | Elevation Arm | 092041017 | 143. | Nut, M10 x P1 | 770402216 |
| 72. | Base, Tone Arm | 092041058 | | | |
| 73. | Restore Lever Ass'y | 092041082 | | | |
| 74. | Shaft, Elevation | 092046517 | | | |



Part No.

2046507
2041023
0911255
2041059
5001464

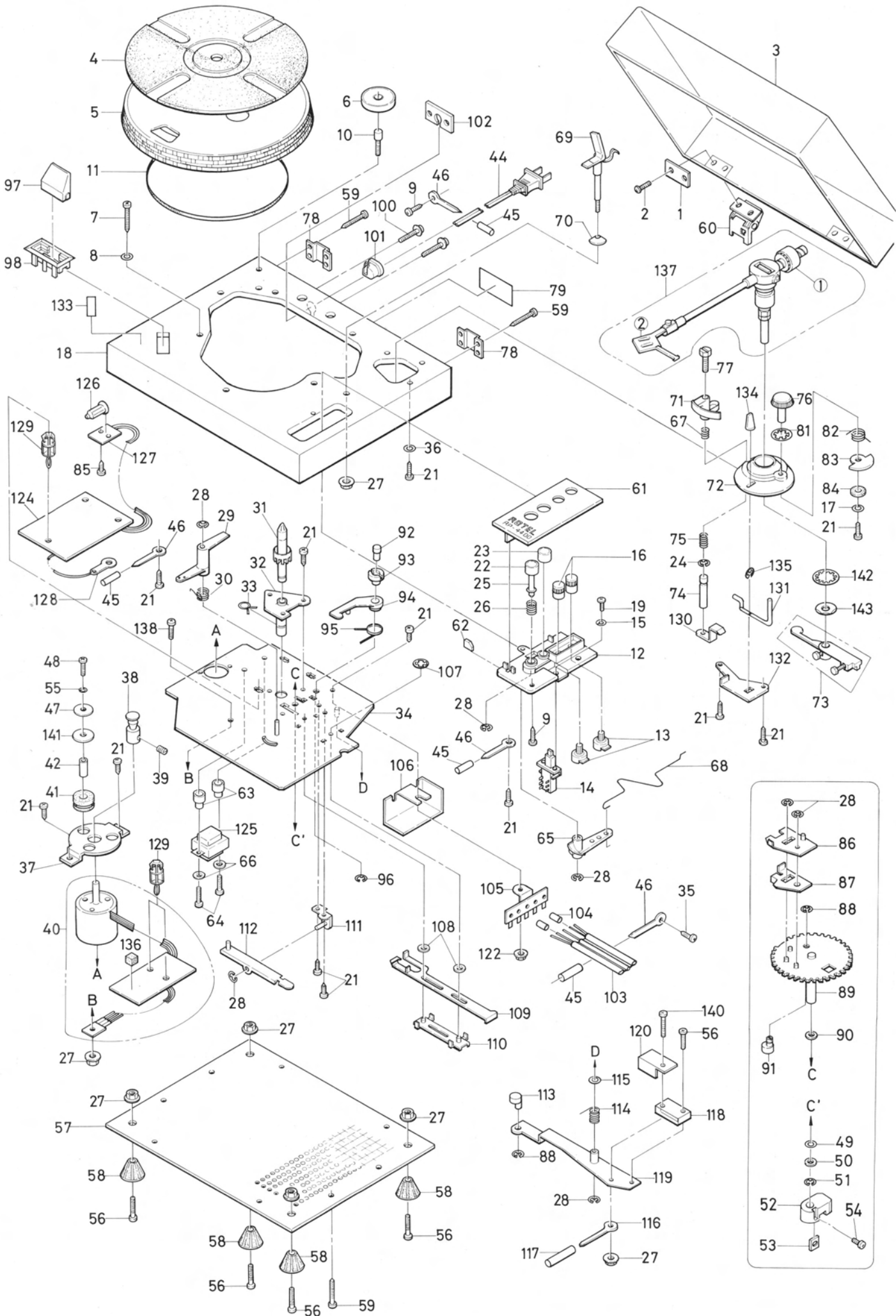
2046518
2046519
2041062
2046520
3202606
2041063
2041064
0500064
2046521

0500066
2047006
2047007
2047008
2041065
2046522
0500065
2041013
2041083

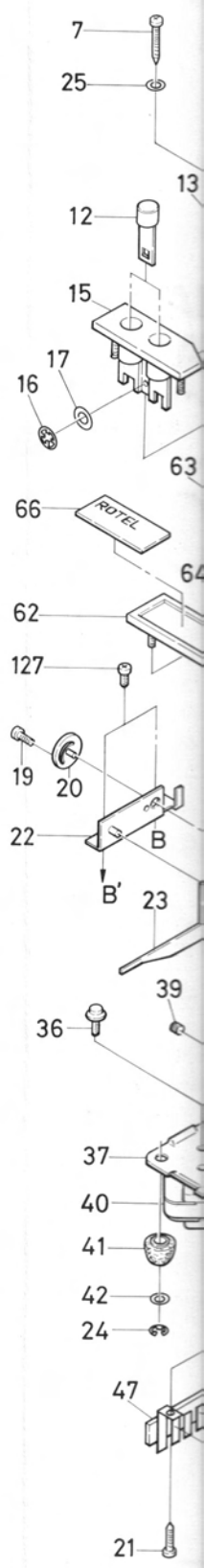
9203014
5201111
2041066
1001143
2011207
5702002
2041068
0911256
2047009
2041069
2041070
2041071
2041072
2047010
2046523
0500068
0031339
2011208
5212279
2041073
2041084

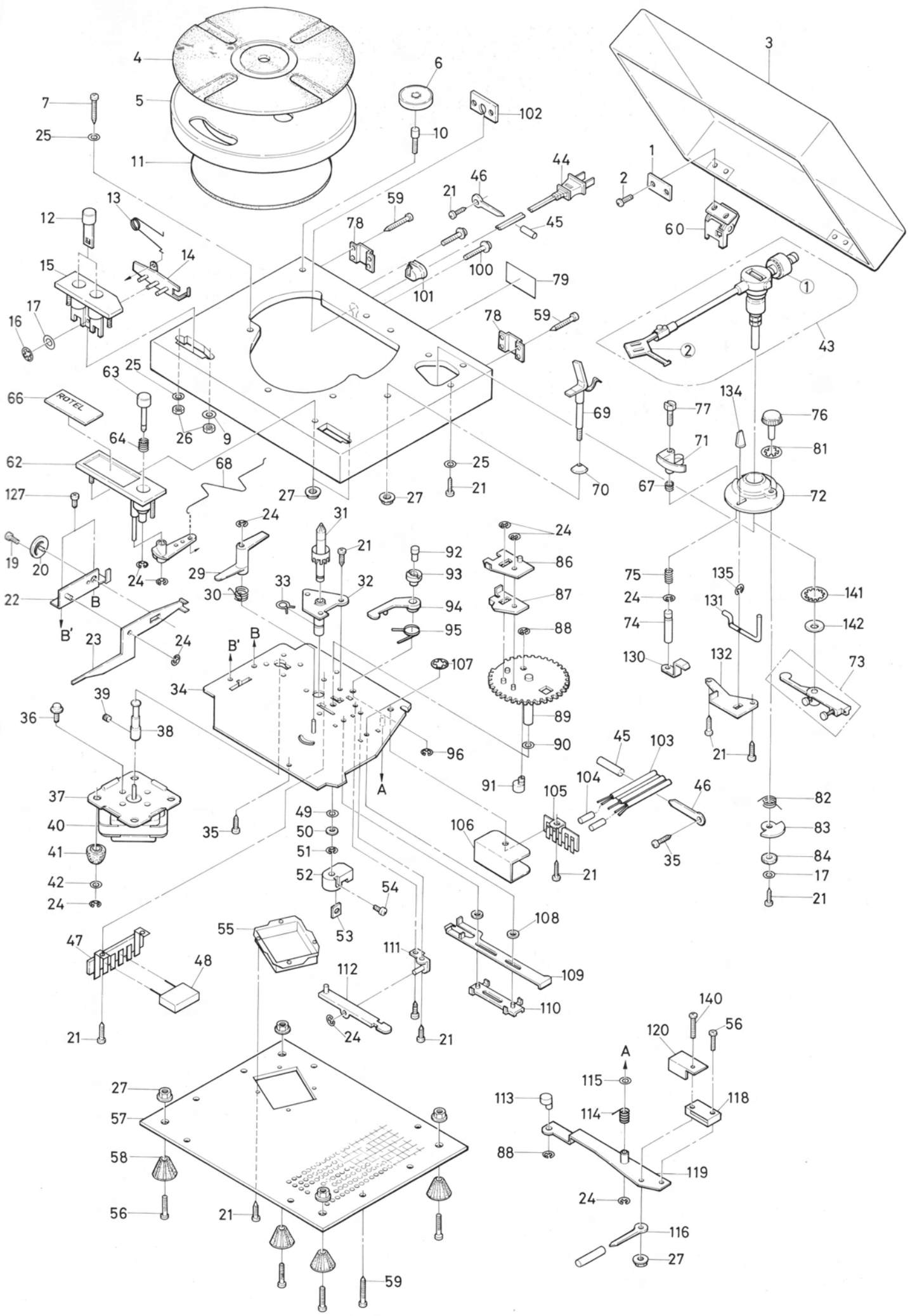
0402215
2041085
001494
2043112
2041086
001147
2046542
2041018
2041074
2041075
0001245
2041021
0500035
201312
2111125
011041
011255
203012

203018
0500061
0500075
0402216



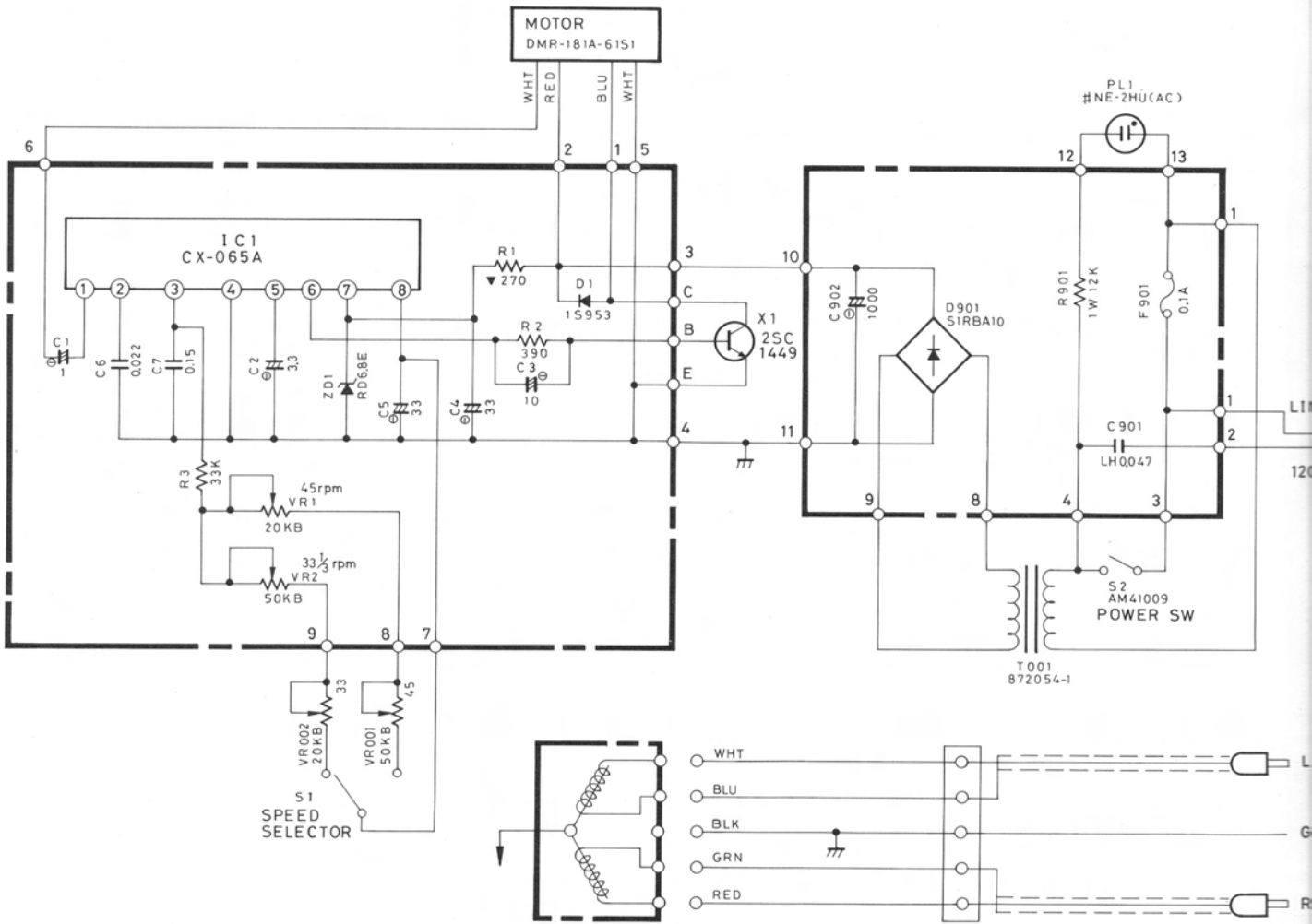
| Key No. | Description | Part No. | Key No. | Description | Part No. |
|---------|---|-----------|------------|---|-----------|
| 1. | Plate, Hinge Mtg | 092041030 | 67. | Spring, Elevation Arm | 092046509 |
| 2. | Screw, M4 x 8mm, (BLZ) | 707224008 | 68. | Spring, Reject | 092046515 |
| 3. | Dust Cover | 092041029 | 69. | Arm Rest Ass'y | 092041056 |
| 4. | Rubber Sheet | 672301115 | 70. | Rest Base | 092041057 |
| 5. | Turntable | 092041036 | 71. | Elevation Arm | 092041017 |
| 6. | EP Adapter | 648211249 | 72. | Base, Tone Arm | 092041058 |
| 7. | Screw, 3 x 16mm, B-tight | 092047016 | 73. | Restore Lever Ass'y | 092041082 |
| 8. | Not used | - | 74. | Shaft, Elevation | 092046517 |
| 9. | Washer, $\phi 3.2 \times \phi 13 \times t0.8$ | 770500058 | 75. | Elevation Spring | 092046507 |
| 10. | Shaft, Adapter | 092047003 | 76. | Knob Ass,y, IFC | 092041023 |
| 11. | Belt | 671011015 | 77. | Screw, $\ominus 3 \times 10\text{mm}$, (BLZ) | 770911255 |
| 12. | Pushbutton Ass'y | 092041038 | 78. | Lock Plate | 092041059 |
| 13. | Click Spring | 092046512 | 79. | Rating Label | 136001463 |
| 14. | Cam, Speed Select | 092041039 | 80. | Not used | - |
| 15. | Cover, Speed Select | 092041040 | 81. | Spring | 092046518 |
| 16. | Circular External Ring, CSTW-3 | 770911252 | 82. | Spring, IFC | 092046519 |
| 17. | Washer, $\phi 3.2 \times \phi 8 \times t0.5$ | 770500060 | 83. | Cam, IFC | 092041062 |
| 18. | Cabinet | 092041041 | 84. | Rubber Bush | 092046520 |
| 19. | Screw, M3 x 6mm | 703203006 | 85. | Not used | - |
| 20. | Eccentric | 092047004 | 86. | Clutch | 092041063 |
| 21. | Screw, 3 x 8mm, B-tight | 092047017 | 87. | Clutch Guide | 092041064 |
| 22. | Metal Fittings, Speed Change Arm Mtg | 092041043 | 88. | Arch E-ring, $\phi 3$ | 770500064 |
| 23. | Arm, Speed Change | 092041044 | 89. | Return Gear Ass'y (1) | 092046521 |
| 24. | E-ring, $\phi 3$ | 770500039 | 90. | Fiber Washer, $\phi 5 \times \phi 10 \times t0.5$ | 770500066 |
| 25. | Washer, $\phi 3.2 \times \phi 10 \times t0.8$ | 770500059 | 91. | Eccentric Pin, $\phi 8$ | 092047006 |
| 26. | Nut, M3, Hex | 770402217 | 92. | GS Stud, $\phi 7$ | 092047007 |
| 27. | Flange Nut, M3 | 770402215 | 93. | Shaft, Eccentric | 092047008 |
| 28. | Not used | - | 94. | GS Arm | 092041065 |
| 29. | Kick Lever | 092041004 | 95. | GS Spring | 092046522 |
| 30. | Spring, Return | 092046513 | 96. | Arch E-ring, $\phi 4$ | 770500065 |
| 31. | TT Shaft Ass'y | 092046514 | 97 to 99 | Not used | - |
| 32. | Bearing Ass'y, TT Shaft | 092046515 | 100. | Flange Screw, M3 x 14mm | 709203014 |
| 33. | Stopper | 092047005 | 101. | Cord Stopper | 675201111 |
| 34. | Top Board Ass'y | NSP | 102. | Metal Fittings | 092041066 |
| 35. | Screw, 3 x 8mm, Tapping-I | 092047018 | 103. | Signal Cord Ass'y | 791001143 |
| 36. | Flange Screw, M3 x 6mm | 709203006 | 104. | Tube, Varnish, $\phi 3 \times 14\text{mm}$ (L) | 792011207 |
| 37. | Plate, Motor Mtg | 092041048 | 105. | Lug Terminal | 645702002 |
| 38. | Pulley | 651110020 | 106. | Cover, Shield | 092041067 |
| 39. | Set Screw, M2.6 x 2mm, Pulley Mtg | 770911253 | 107. | Circular External Ring, CSTW-3.5 | 770911256 |
| 40. | Motor | 260101126 | 108. | Spacer | 092047009 |
| 41. | Cushion, Rubber | 672200879 | 109. | Actuating Arm Ass'y | 092041069 |
| 42. | Fiber Washer, $\phi 4.6 \times \phi 13 \times t0.8$ | 770500061 | 110. | Holder, Actuating Arm | 092041070 |
| 43. | Tone Arm Ass'y | 902111125 | 111. | Seesaw Base Ass'y | 092041071 |
| 43-1. | Head Shell | 150011255 | 112. | Seesaw Arm Ass'y | 092041072 |
| 43-2. | Main Weight Ass'y | 092011041 | 113. | Eccentric Pin, $\phi 8$ | 092047010 |
| 44. | Power Supply Cord | 796301151 | 114. | Spring, Switch Arm | 092046523 |
| 45. | Tube, $\phi 3 \times 60\text{mm}$ (L), (UL/CSA) | 792011206 | 115. | Washer, $\phi 5 \times \phi 10 \times t0.2$ (BsP) | 770500068 |
| 46. | Lug, Wire Clamp | 770031333 | 116. | Lug, Wire Clamp | 770031339 |
| 47. | Lug Terminal, (2L4P) | 645600400 | 117. | Tube, $\phi 2 \times 35\text{mm}$ (L) | 792011208 |
| 48. | Noise Canceller, LH 0.047, Y | 470101130 | 118. | Micro Switch | 615212279 |
| 49. | Fiber Washer, $\phi 5 \times \phi 10 \times t0.2$, (Thrust adjust) | 770500062 | 119. | Switch Arm Ass'y | 092041073 |
| 50. | Fiber Washer, $\phi 5 \times \phi 10 \times t1.0$, (Thrust adjust) | 770500063 | 120. | Switch Cover | 092041084 |
| 51. | E-ring, $\phi 4$ | 770500040 | 121 to 126 | Not used | - |
| 52. | Switch Lever-A | 092041050 | 127. | Screw, 3 x 5mm, C-tight | 763203005 |
| 53. | Nut, M3, Square | 770911254 | 128. | Not used | - |
| 54. | Screw, M3 x 8mm | 703203008 | 129. | Not used | - |
| 55. | Cover, Motor | 092041051 | 130. | Cueing Arm | 092041018 |
| 56. | Screw, M3 x 14mm | 703203014 | 131. | Cueing Lever | 092041074 |
| 57. | Bottom Cover | 092041052 | 132. | Tone Arm Base Plate | 092041075 |
| 58. | Foot, Rubber | 673402016 | 133. | Not used | - |
| 59. | Wood Screw, 3.1 x 16mm | 730203116 | 134. | Cueing Cap | 092041021 |
| 60. | Hinge Ass'y | 092041030 | 135. | E-ring, $\phi 2$ | 770500035 |
| 61. | Not used | - | 136 to 139 | Not used | - |
| 62. | Cover, Reject Button | 092041054 | 140. | Screw, M3 x 18mm | 703203018 |
| 63. | Reject Button Ass'y | 092041055 | 141. | Teethed Washer, M10 | 770500075 |
| 64. | Spring, Reject Button | 092046505 | 142. | Nut, M10 x P1 | 770402216 |
| 65. | Reject Lever | 092041015 | | | |
| 66. | Name Plate | 092041135 | | | |



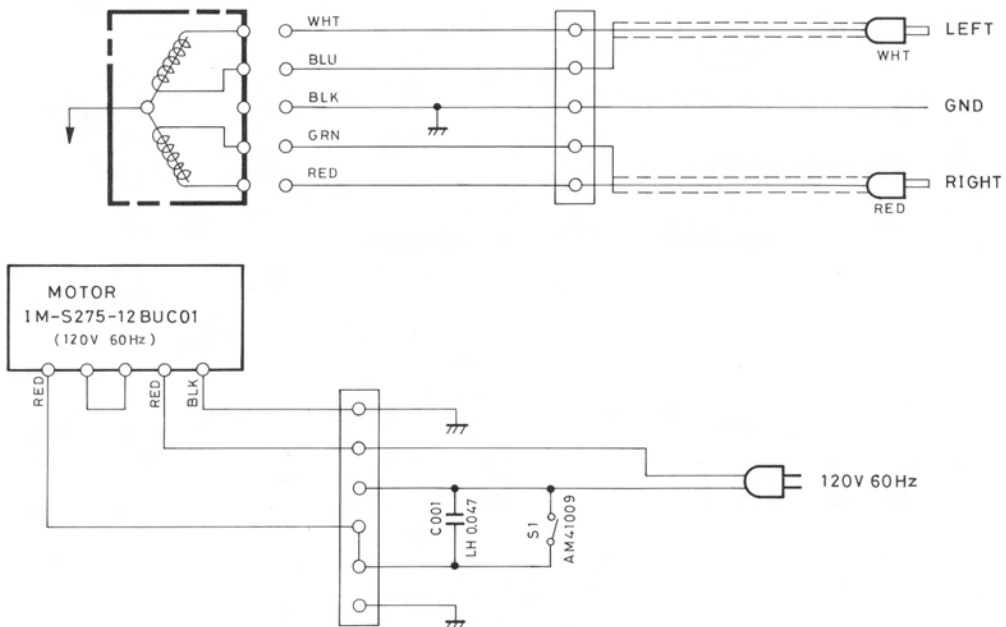


Schematic Diagram

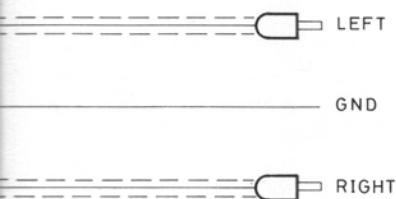
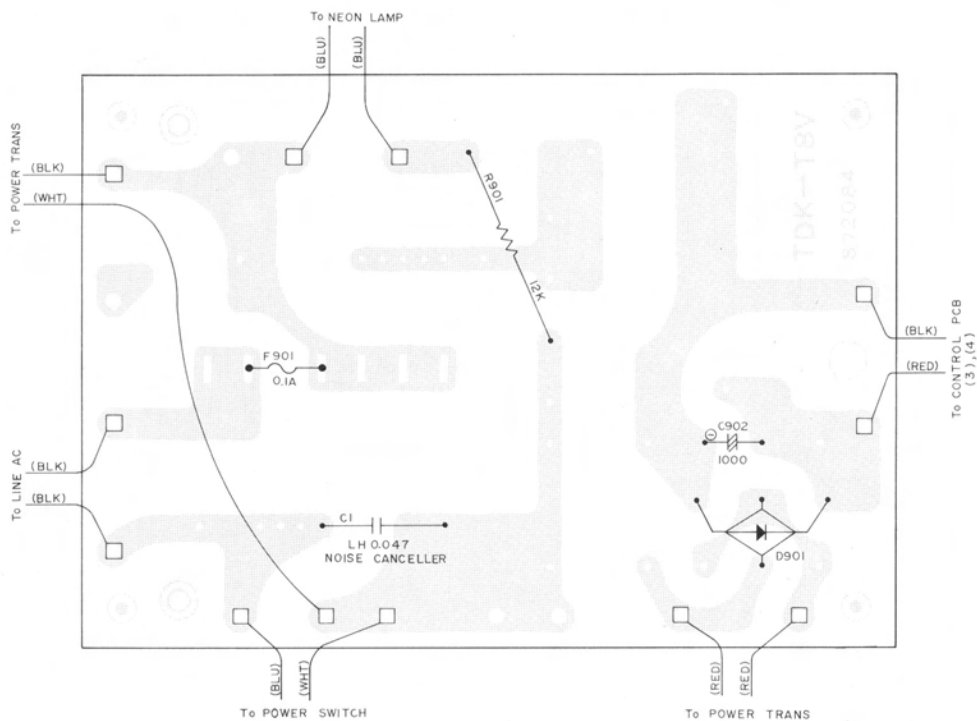
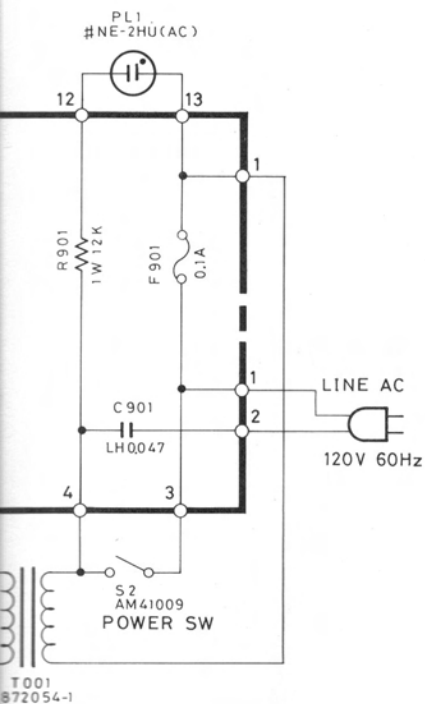
RP-4400



RP-2400



Power Supply Circuit Board Diagram (RP-4400)



Control Circuit Board Diagram (RP-4400)

