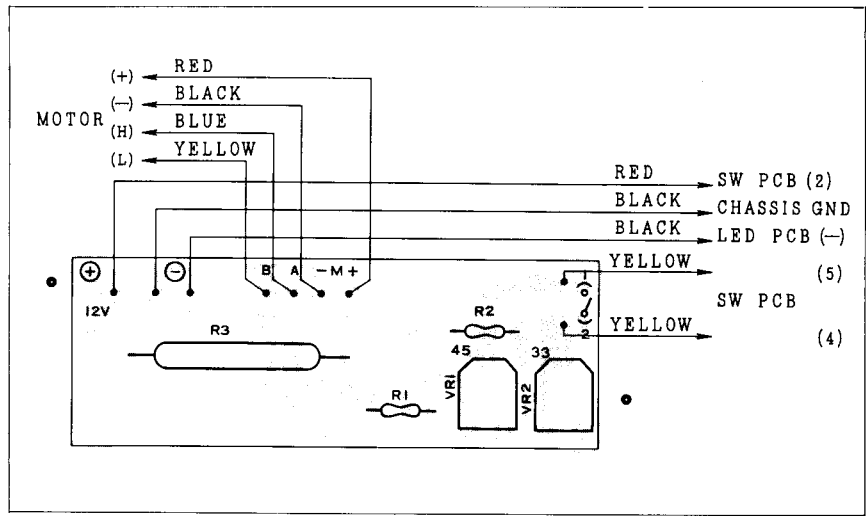


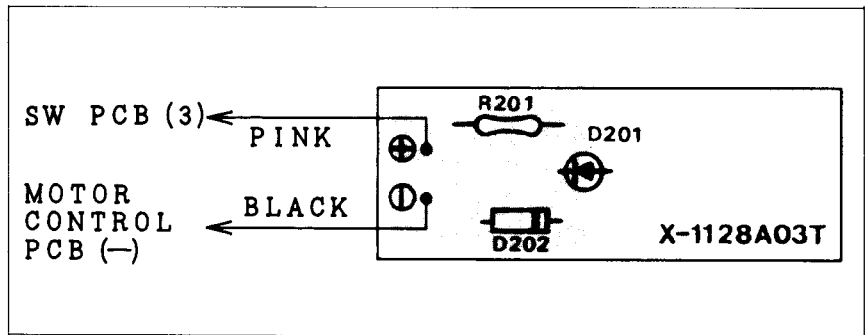
Motor Control PCB

Schematic Location	Description	Parts No.
R1	Carbon Resistor	3.3kΩ 1/4W
R2	Carbon Resistor	3.3kΩ 1/4W
R3	Metal Oxide Film Resistor	47Ω 3W
VR1	Variable Resistor	2kΩ (B)
VR2	Variable Resistor	10kΩ (B)



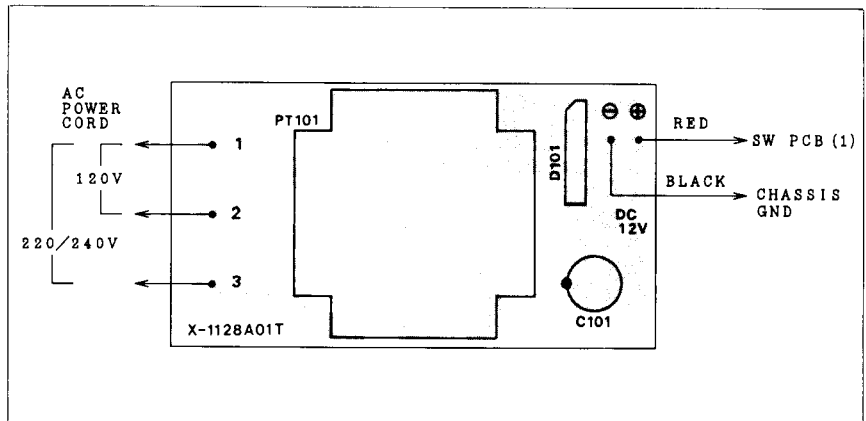
LED PCB

Schematic Location	Description	Parts No.
R201	Carbon Resistor	2.2kΩ 1/4W
D201	LED	SEL1112R
D202	Silicon Diode	1S1588



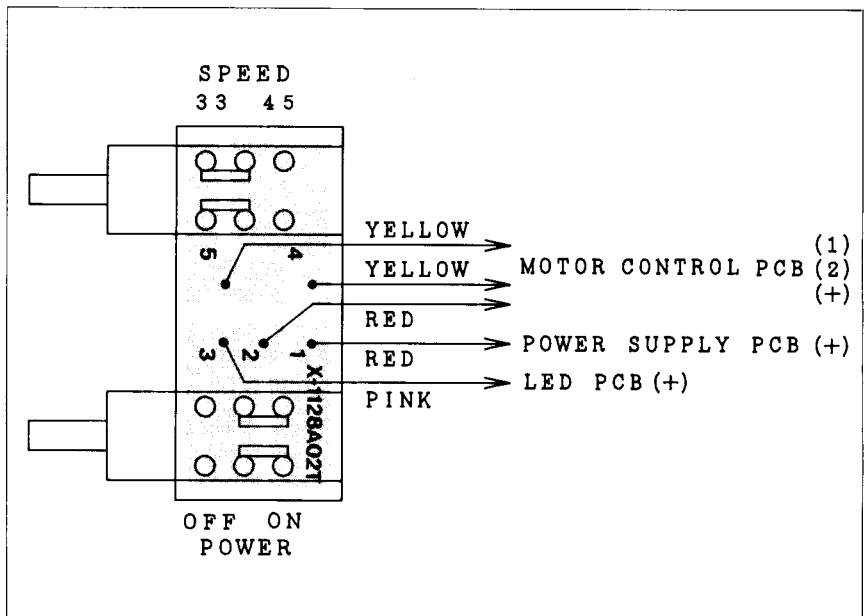
Power Supply PCB

Schematic Location	Description	Parts No.
C101	Electrolytic Capacitor	25V470uF
D101	Rectifier Diode	S1VB10
T101	Power Transformer for 120V	033728
	for 220/240V	033712
	for 100V	033729



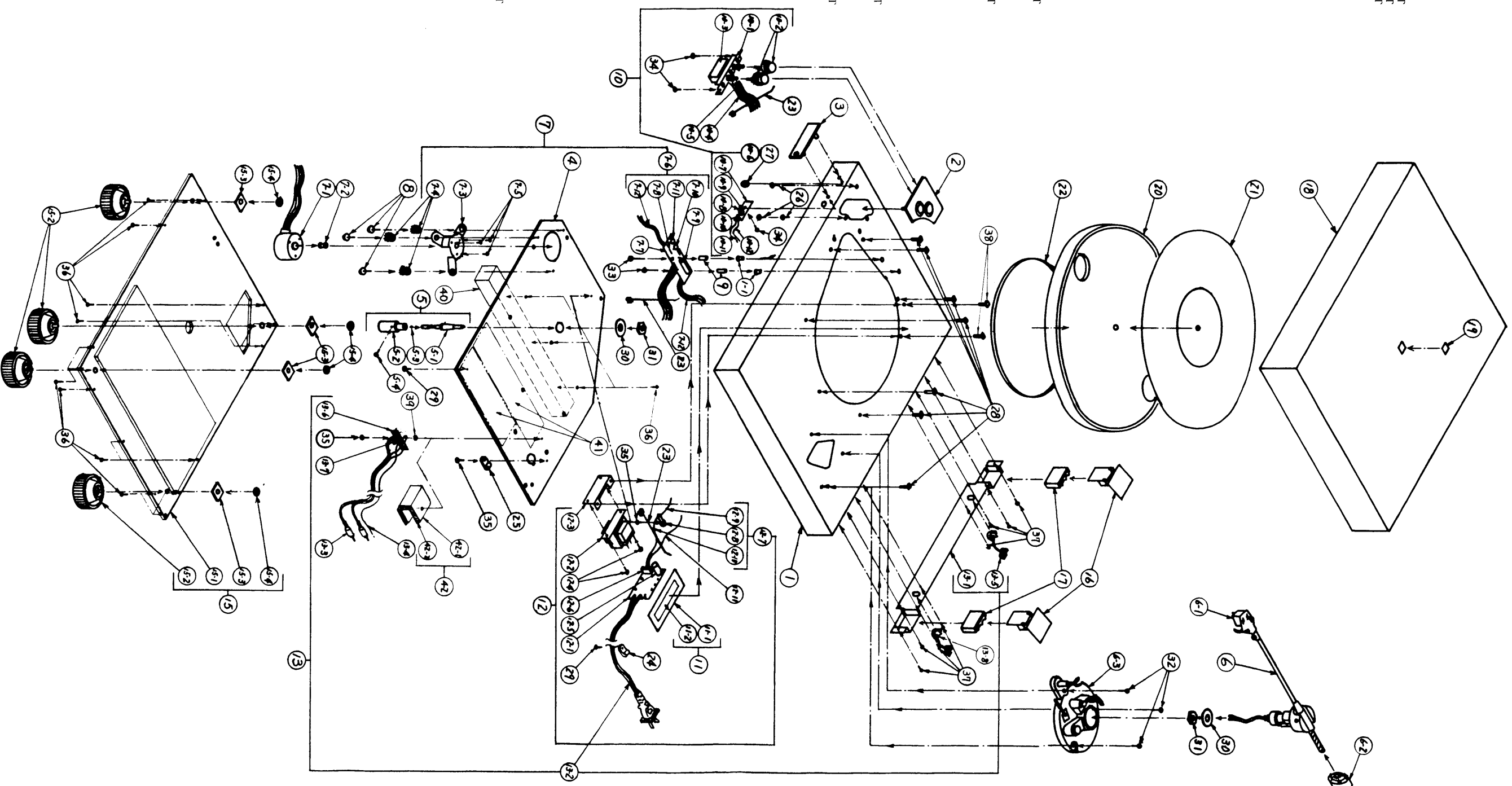
SPEED ADJUSTMENT

Step	Location	Adjust	Adjust for
1	Motor Control PCB	VR1	45rpm
2	Motor Control PCB	VR2	331/3 rpm



DISASSEMBLY DIAGRAM

Key No	Description	Parts No
1-1	Cabinet	021996
1-1	Nuts	M3X9-5
2	Operating Board	013PH3-05A00T
3	Ornamental Board	014PH4-06A00T
4	Chassis Body	018PH2-02A00T
5-1	T T Shaft Assy	047319
5-2	T T Shaft	047317
5-3	T T Shaft Support	047318
5-4	Steel Ball	Y99000104
6-1	Screw 3X6	Y01300602
6-2	P U Assy	MA-1969
6-1	Cartridge	092AT-110E
6-2	Main Weigght Assy	MR-3810
6-3	Tone Arm Base	MA-2026
	Head Shell	MC-7389
	Arm Rest	MB-1277
7-1	Motor SA	024SHP2R00
7-2	Motor Assy	915702
7-3	Pulley	913247
7-4	Motor Support	242020
7-5	Cushion, Rubber	Y01260301
7-6	Screw 2.6X3	033466-4
7-7	Motor PCB Assy	033469-4
7-7	Motor PCB	Z4050485
7-8	Resistor 3.3kΩ 1/4W	Z4054047
7-9	Resistor 47Ω 3W	Z4060070
7-10	Semi-Fixed Resistor 2KΩ-B	Z4060015
7-11	Semi-Fixed Resistor 10KΩ-B	047034-0~3
7-12	Wire	893057-51
8	Motor Support Screw	047329
9	Spacer	033732
10-1	Switch Assy	06147R-2592B
10-2	Push Switch	033417-1
10-3	Switch Knob	016X-1128B02T
10-4	Switch PCB	047034-29
10-4	Wire	047034-30
10-6	LED PCB Assy	047326
10-7	LED PCB	016X-1128B03T
10-8	LED (SEL,1112R)	047332
10-9	Resistor 2.2kΩ 1/4W	Z4058165
10-10	Diode (1S1588)	Z4110151
10-11	Wire	047034-28
10-12	Wire	047034-32
11	Insulation Sheet SA	.047321
11-1	Insulation Sheet	
11-2	Double faced Tape	
12-1	Power Supply Assy	
12-1	Power Transformer PCB	016X-1128B01T
12-2	Power Transformer for 120V for 220/240V for 100V	047324-1
		047324
		047324
12-3	PT Support	013PH4-03A00T
12-4	Screw 3X5	Y01300505
12-5	Electrolytic Cap. (25V/470uF)	Y01300313
12-6	Rectifier Diode (S1VB10)	Z40800313
12-7	Fairth Wire Assy	Z4110041
12-8	Lug Terminal (3φ)	047325
12-9	Wire	911872
12-10	Wire	047034-33
12-11	Wire	047034-34
13-1	Rear Panel Assy	047034-31
13-2	AC Power Cord for UK	015TRP-510
	for USA/CAN/DA	047101
	for EUROPA	0724TR-670#4
	for AUSTRALIA	0724TR-1037
	for JAPAN	072C-3763
		072C-1695
		072C-4358A01
13-3	Wire	047032-16
13-4	Wire Stopper (SR4N-4)	047351-7
13-5	Lug Terminal (5P)	890979
13-6	Capacitor (50V0.0047uF)	Z4083821R
13-7	Capacitor (SR5KN-4)	047351-19
13-8	NO USE	
14	Bottom Board SA	021997
15-1	Bottom Board	119PH4-09A00
15-2	Foot Assy	047322
15-3	Foot Support Cushion	Y37000601
15-4	CS6	019C-4118
16	Hinge Assy	019PH4-08A00T
17	Anti-Vibration Rubber	0142MX-6T
18	Dust Cover	082C-4355A00
19	Badge	014C-4350A00
20	Turntable	014C-4112A00
21	T Sheet	047334
22	Belt	894408
23	Wire Clamper	911466-1
24	Clip	911466-2
25	Clip	911466-2
26	Screw 3X8	Y10300801
27	Screw 4X20	Y37000801
28	Screw 3X10	Y01402009
29	Washer 15φ	Y09301001
30	Nut M14	Y96000051
31	Nut M14	Y22001403
32	Screw 4X25	Y01402530
33	Screw 3X20	Y013002001
34	Screw 3X8	Y10300801
35	Screw 3X6	Y10300608
36	Screw 2.7X13	Y11271303
37	Screw 2.7X10	Y11271303
38	Washer 4X16	Y11271003
39	Reinforcement Rib	Y01401609
40	Anti-Vibration Tape	Y41000302
41	Shield Board SA	047354
42-1	Shield Board	VEM436
42-2	Insulation Tape	890959-1



Schematic Diagram RP-855

