

# Technical Manual

## BELT DRIVE STEREO TURNTABLE RP-955

### Table of Contents

Specification.....	1
Parts List.....	2
Disassembly Diagram.....	3
Schematic Diagram.....	5

### Specifications

Motor .....	DC Servo motor
Drive System .....	Belt-drive
Speeds .....	33-1/3 and 45 rpm
Wow and flutter .....	Less than 0.03% (WRMS)
Signal-to-Noise Ratio .....	Beter than 60dB (IEC-B) Beter than 70dB (DIN-B)
Platter .....	Aluminum diecast (310mm, 1.5kg)

### TO NEARM

Type .....	Static-balanced staight pipe arm oil-damped cueing device, direct- readout stylus gauge counter- weight, anti-skating device.
------------	--

Overhang .....	16 mm
Tracking Error .....	+2.35° to -1.3°
Suitable Cartridge	
Weight .....	3g to 9g
Suitable Stylus Pressure .....	0.5g to 3g

### CARTRIDGE

Cartridge .....	AT110E (AUDIO TECHNICA) (DUAL MAGNET)
Frequency Response .....	15 to 20,000Hz
Sensitivity .....	3mV
Channel Balance .....	2dB
Channel Separation .....	20dB
Stylus Pressure .....	1.0g to 2.0g
Tracking Angle .....	23°
Load Resistor .....	47 kohms
Replacement Stylus .....	ATN 110E
Net Weight .....	7g

### MISCELLANEOUS

Power Requirement .....	120v (60Hz) or 220/240v (50Hz)
Power Consumption .....	5watts
Dimensions (overall) .....	432(W) x 135(H) x 350(D) mm 17" x 5-5/16" x 13-25/32"
Weight (net) .....	7.7Kg/16.94 lbs.

• Specifications subject to change for improvement without prior notice.

## THE ROTEL CO., LTD

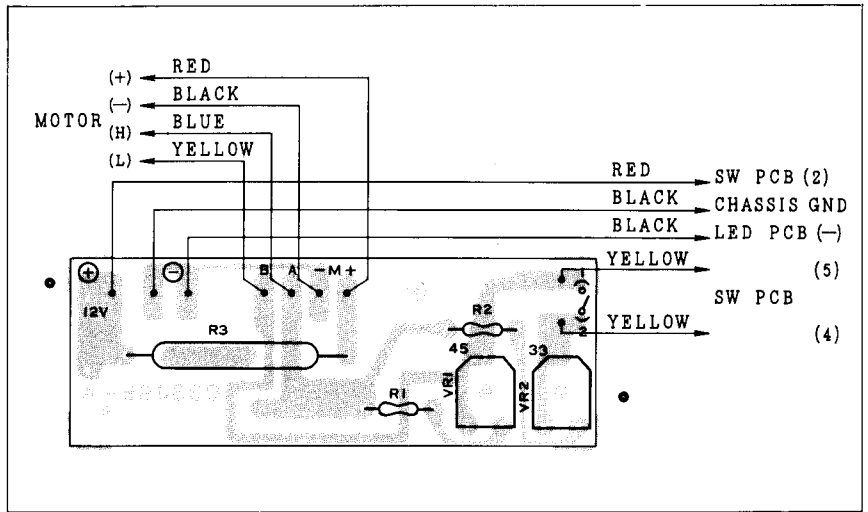
BUNZAN-SHINSEN-BLD. 4F 10-10 SHINSEN-CHO, SHIBUYA-KU,  
TOKYO 150-0045, JAPAN

Serial. NO. Beginning
--------------------------

Y-312A-98085C/S-S

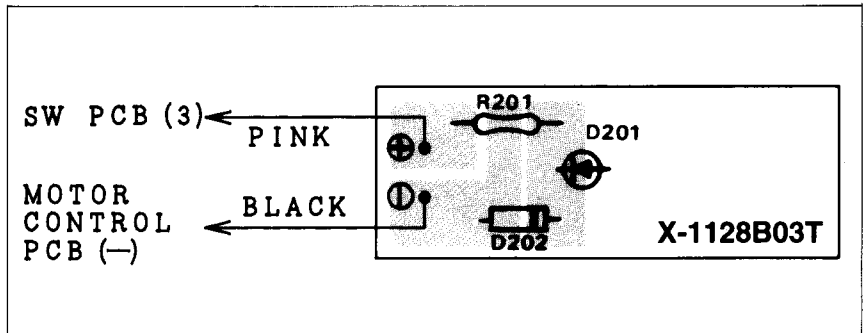
## Motor Control PCB

Schematic Location	Description	Parts No.
R1	Carbon Resistor	3.3kΩ 1/4W
R2	Carbon Resistor	3.3kΩ 1/4W
R3	Metal Oxide Film Resistor	47Ω 3W
VR1	Variable Resistor	2kΩ (B)
VR2	Variable Resistor	10kΩ (B)



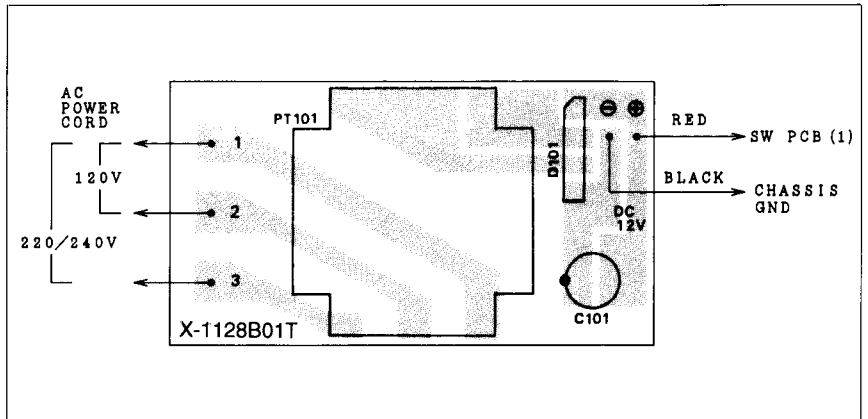
## LED PCB

Schematic Location	Description	Parts No.
R201	Carbon Resistor	2.2kΩ 1/4W
D201	LED	SEL1112R
D202	Silicon Diode	1S1588



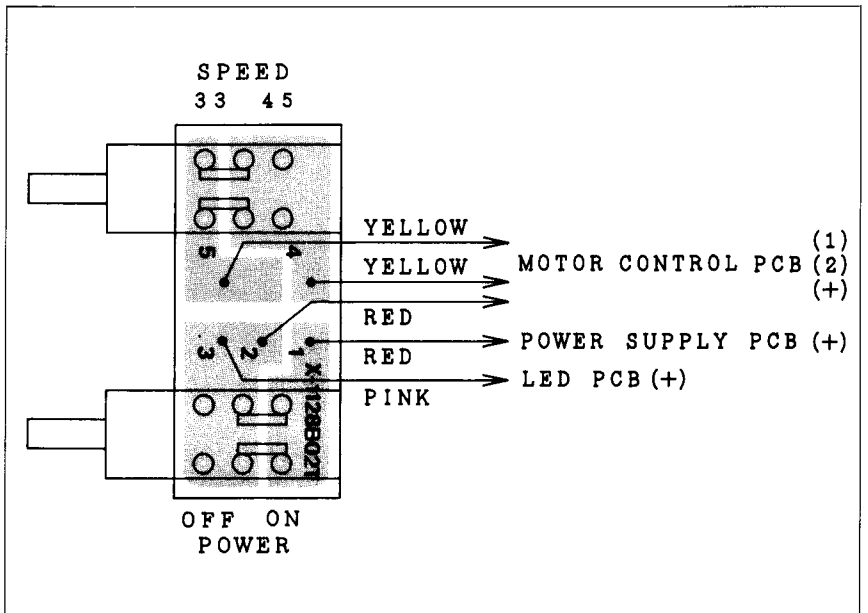
## Power Supply PCB

Schematic Location	Description	Parts No.
C101	Electrolytic Capacitor	25V470uF
D101	Rectifier Diode	S1VB10
T 101	Power Transformer for 120V	033728
	for 220/240V	033712
	for 100V	033729



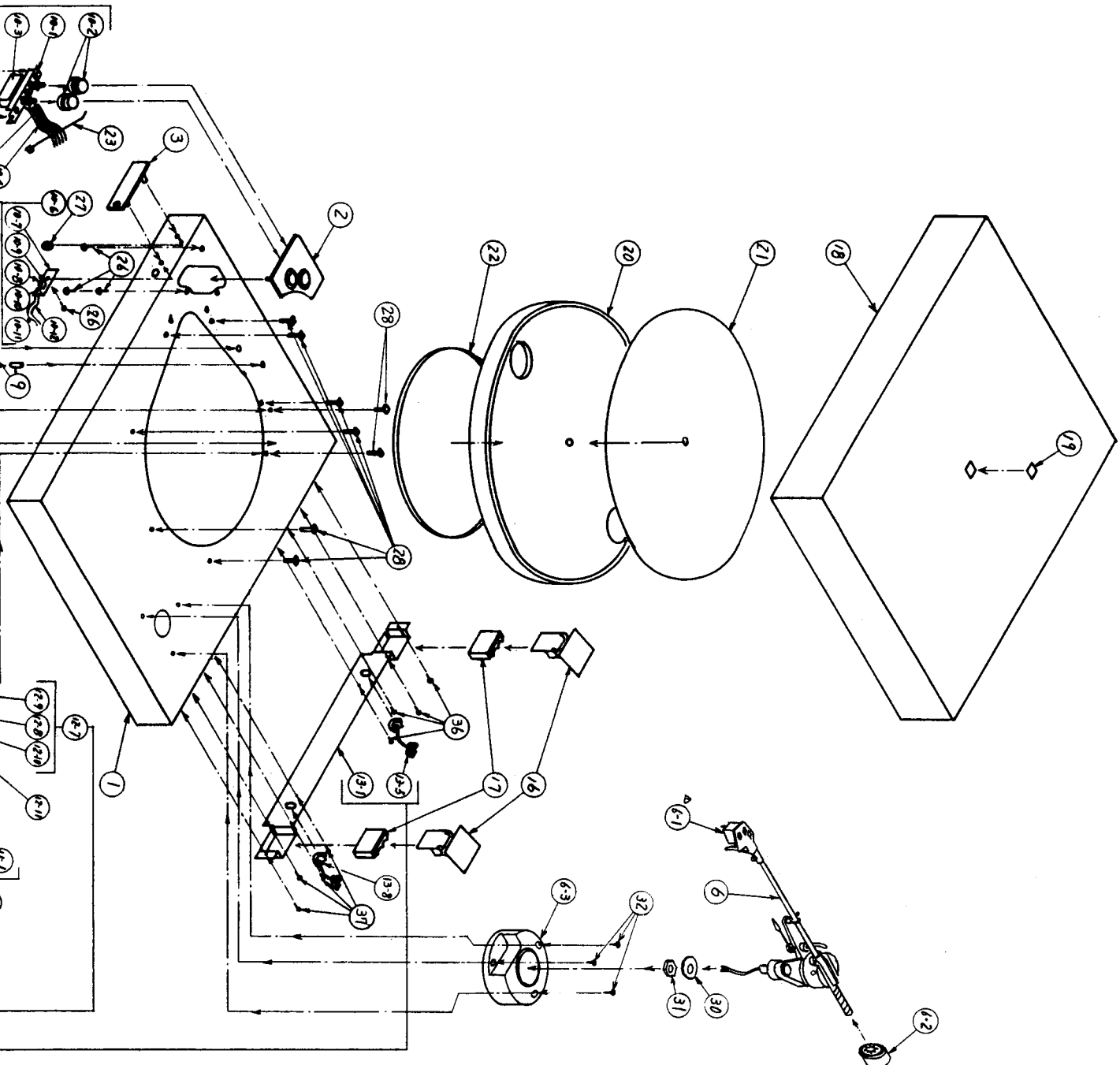
## SPEED ADJUSTMENT

Step	Location	Adjust	Adjust for
1	Motor Control PCB	VR1	45rpm
2	Motor Control PCB	VR2	331/3 rpm

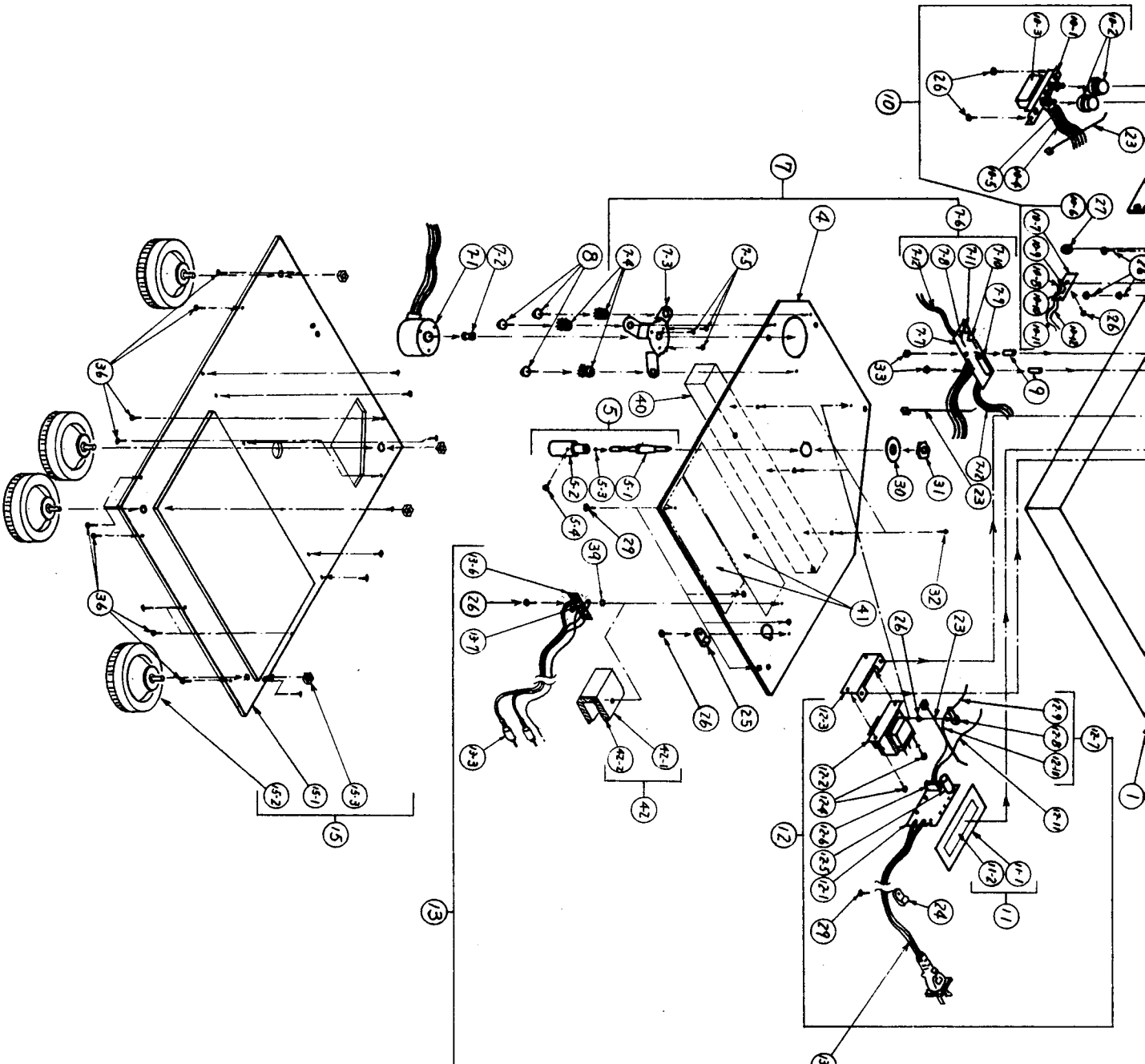


# DISASSEMBLY DIAGRAM

Key No.	Description	Parts No.
1	Cabinet	022198
1-1	Nuts	M3X.5
2	Operating Board	034258
3	Ornamental Board	034250
4	Chassis Body	022192
5	T T Shaft Assy	047319
5-1	T T Shaft	047317
5-2	T T Shaft Support	047318
5-3	Steel Ball	Y99000104
5-4	Screw 3X6	Y01300602
6	P U Assy	022207
6-1	Cartridge	0922AT-110E
6-2	Main Weight Assy	034302
6-3	Tone Arm Base	034283
	Head Shell	MA-8513
	Arm Rest	MB-4022
7	Motor SA	
7-1	Motor Assy	024SHP2R41
7-2	Pulley	048192
7-3	Motor Support	048193
7-4	Cushion, Rubber	048150
7-5	Screw 2.6X3	Y01280301
7-6	Motor PCB Assy	033466-4
7-7	Motor PCB	033469-4
7-8	Resistor 3.3K $\Omega$ /4W	Z4050485
7-9	Resistor 47 $\Omega$ 3W	Z4054047
7-10	Semi-Fixed Resistor 2K $\Omega$ -B	Z4060070
7-11	Semi-Fixed Resistor 10K $\Omega$ -B	Z4060015
7-12	Wire	047034-0-3
8	Motor Support Screw	048151
9	Spacer	EP-16
10	Switch Assy	033734
10-1	Push Switch	048130
10-2	Push Knob	033417-1
10-3	Switch PCB	033694
10-4	Wire	047034-29
10-5	Wire	047034-30
10-6	LED PCB Assy	047326
10-7	LED PCB	033694
10-8	LED (SEL1112R)	047332
10-9	Resistor 2.2K $\Omega$ 1/4W	Z4058165
10-10	Diode (1S1588)	Z4110151
10-11	Wire	047034-28
10-12	Wire	047034-32
11	Insulation Sheet SA	047321
11-1	Insulation Sheet	
11-2	Double-faced Tape	
12	Power Supply Assy	
12-1	Power Supply PCB	
12-2	Power Transformer for 120V for 220/240V for 100V	
12-3	PT Support	
12-4	Screw 3X5	



12	Power Supply Assy	034274
12-1	Power Supply PCB	033712
12-2	Power Transformer for 120V for 220/240V for 100V	033712 033729 034259
12-3	PT Support	Y01300505
12-4	Screw 3X5	Z4080313
12-5	Electrolytic Cap. (25V470uF)	Z4110041
12-6	Rectifier Diode (S1VB10)	047325
12-7	Earth Wire Assy	911872
12-8	Lug Terminal (3φ)	047034-33
12-9	Wire	047034-34
12-10	Wire	047034-31
12-11	Wire	
13	Rear Panel Assy	
13-1	Rear Panel	022193
13-2	AC Power Cord for UK for USACANADA for EUROPE for AUSTRALIA for JAPAN	047101 0724TR-670#4 0724TR-1037 072C-3763 072C-1695 034295
13-3	Phono Cable	
13-4	NO USE	
13-5	Cord Stopper (SR4N-4)	047351-7
13-6	Lug Terminal (5P)	048197
13-7	Capacitor (50V0.0047uF)	Z4083821R
13-8	Cord Stopper (SR5KN-4)	047351-19
14	NO USE	
15	Bottom Board SA	
15-1	Bottom Board	022199
15-2	Foot Assy	034031
15-3	Nut M8	
16	Hinge Assy	048200
17	Anti-Vibration Rubber	034261
18	Dust Cover	022144
19	Badge	082C-435A00
20	Turntable	022196
21	T T Sheet	034296
22	Belt	047334
23	Wire Clamper	894408
24	Clip	048198-4
25	Clip	048198-5
26	Screw 3X8	Y10300807
27	CS6	Y37000601
28	Screw 4X16	Y01401609
29	Screw 3X12	Y09301201
30	Washer 15φ	Y96000051
31	Nut M14	Y22001403
32	Screw 3X14	Y01301430
33	Screw 3X20	Y01302001
34	Screw 3X8	Y10300801
35	NO USE	
36	Screw 2.7X13	Y11271303
37	NO USE	
38	NO USE	
39	Washer	Y41000302
40	Reinforcement Rib	047354
41	Anti-Vibration Tape	VEM436
42	Shield Board SA	
42-1	Shield Board	048209
42-2	Insulation Tape	



# Schematic Diagram RP- 955

