



Technical Manual

SURROUND SOUND PROCESSOR RSP-976

Table of Contents

Specification.....1
 Parts List.....2-8
 Wiring.....9
 PCB Assembly.....10-14
 Schematic Diagram15-21

Specification

Audio

Total Harmonic Distortion:<0.03%
 Intermodulation Distortion (60 Hz:7 kHz): <0.03%
 Frequency Response: 10 Hz - 20 kHz, ±1 dB (line level)
 10 Hz - 20 kHz, ±0.3 dB (digital level)
 Signal to Noise Ratio (IHF A-weighted): 92 dB (Stereo) Analog
 90 dB (Dolby Digital, dts) 0dBFS
 Input Sensitivity/Impedance: Line Level: 200 mV/47 kohms
 Tone Controls (Bass/Treble): ±8 dB at 100 Hz/10 kHz
 Line Output Level: 600 mV (200 mV Input)

Video

Frequency Response: 3 Hz-10 MHz, ± 3 dB
 Signal to Noise Ratio: 45 dB
 Input Impedance: 75 ohms
 Output Impedance: 75 ohms
 Output Level: 1 volt

General

Power Consumption: 40 watts
 Power Requirements (AC): 115 volts, 60Hz (USA)
 230 volts, 50Hz (Europe)
 Weight: 6.9 Kg/15.2 lb.
 Dimensions (W x H x D): 440 x 121 x 303 mm
 173/8 " x 47/8 " x 12"

THE ROTEL CO., LTD.
 SHINSEN-BLD. 4F 10-10 SHINSEN-CHO, SHIBUYA-KU,
 TOKYO 150-0045, JAPAN

Serial. NO. Beginning

Parts List (1/7)

SYMBOL	PART NO.	DESCRIPTION
E-1286A00 MAIN PCB ASSY		
JK801-JK803	066 4TR-2964#10	3P PIN JACK AU (YEL) EARTH
JK201-JK204	066 4TR-3184	6P PIN JACK AU (WHT.RED)
C922-934	043 TC500V103	CERAMIC CAP 500V0.01UF
C825	043 TC50V103	CERAMIC CAP 50V0.01UF
C814,815,828,832,917	043 TC50V104	CERAMIC CAP 50V0.1UF
C824,829	043 TC50V101	CERAMIC CAP 50V100PF
C830,831	043 TC50VCH330	CERAMIC CAP 50V33PF CH
C819,820	043 TC50VCH560	CERAMIC CAP 50V56PF CH
CN202	068 C-4689A07	CONNECTOR BASE 7P 14620010
CN200,CN201	068 C-4689A11	CONNECTOR BASE 11P 14620020
CP903	068 B3B-EH	CONNECTOR WAFER 3P
CP905	068 B4B-PH-KS	CONNECTOR WAFER 4P
CP904	068 B7B-EH	CONNECTOR WAFER 7P
CP106	068 B7B-PH-KS	CONNECTOR WAFER 7P
CN601	068 C-4692A12	CONNECTOR WIRE 10P 100MM
CN402	068 C-4692A16	CONNECTOR WIRE 12P 80MM
CN401	068 C-4692A17	CONNECTOR WIRE 15P 80MM
CN108	068 C-4692A04	CONNECTOR WIRE 3P 200MM
CN107	068 C-4692A07	CONNECTOR WIRE 4P 240MM
CN405	068 C-4692A06	CONNECTOR WIRE 4P 80MM
CN602	068 C-4692A19	CONNECTOR WIRE 8P 300MM
X801	023 HC49U-001	CRYSTAL HC49U14.31818MHZ
D901-914,918	034 T1N4003-TB	DIODE 1N4003-E
D801-803,915-917,919	034 T1N4148-86	DIODE 1N4148TAP-50
C805-808,812,813,816,817,C827,833	041 UTES1A101-FB	E/C 10V100UF FB-FORMING
C801-804	041 TUTES1A471-TF	E/C 10V470UF TF-FORMING
C906	041 UTES1C103	E/C 16V10000UF
C909	041 UTES1C101-FB	E/C 16V100UF FB-FORMING
C904,905	041 UTES1C222	E/C 16V2200UF
C901	041 UTES1E102	E/C 25V1000UF
C908	041 TUTES1E221-TF	E/C 25V220UF TF-FORMING
C249-264,351-354,368,369,C810,811,918	041 UTES1E470-FB	E/C 25V47UF FB-FORMING
C902,903	041 UTES1V332	E/C 35V3300UF
C826	041 UTES1HR47-FB	E/C 50V0.47UF FB-FORMING
C809,919	041 UTES1H100-FB	E/C 50V10UF FB-FORMING
C821,822,911-916	041 UTES1H010-FB	E/C 50V1UF FB-FORMING
C823	041 UTES1H2R2-FB	E/C 50V2.2UF FB-FORMING
C920	041 UTES1H220-FB	E/C 50V22UF FB-FORMING
C265,266,271,272,275-277,288,C291-294 297-300,303,304,C355,356,360,361,366,367	041 UTES1H4R7-FB	E/C 50V4.7UF FB-FORMING
C921	041 UTES1H470-FB	E/C 50V47UF FB-FORMING
J1	069 C-4484A00	EARTH LUG
	071 4TVL-7#12	HEX. BUSH 35MM
	071 4TVL-7#13	HEX. BUSH 7MM
IC205-209,302,303	031 NJM5532DD	IC (OPE DUAL)
IC803	031 TSH94IN	IC (QUAD OPE)
IC907	031 NJM7815FA	IC (REGULATOR +15VDC)
IC901-903	031 NJM7805FA	IC (REGULATOR +5VDC)
IC905	031 NJM7806FA	IC (REGULATOR +6VDC)
IC906	031 NJM7915FA	IC (REGULATOR -15VDC)
IC904	031 NJM7906FA	IC (REGULATOR -6VDC)
IC801	031 KS5520-1	IC (SCREEN DISPLAY)
IC201,202,802	031 TC9163AN	IC (SWITCH ALLEY)
IC301	031 TC9459N	IC (VOLUME)
	071 4TVL-8#13	INSERT BUSH 5MM

Parts List (2/7)

SYMBOL	PART NO.	DESCRIPTION
	071 4TVL-8#14	INSERT BUSH 7MM
L801	021 LF147A00	MICRO INDUCTOR 100UH AL0307ST
L802	021 LF146A00	MICRO INDUCTOR 10UH AL0307ST
R901	054 1WS47JF	MOF R.1WS 47R M TYPE
R249,250,253,254,259,260,265,R266,271,272, 277,278,283,284,R289,290,295,296,301,302, 357,R385,368,369,374,375	053 CR14-104J-A	RESISTOR 1/4W 100K FORMING
R201-224,232-236,247,248,R255-258,267-270, 279-282,R291-294,303-305,355,356,R361-363, 366,367,370,371,R376,377,820	053 CR14-102J-A	RESISTOR 1/4W 1K FORMING
R225-230,237-246,R351-354,364,365,832,833	053 CR14-221J-A	RESISTOR 1/4W 220R FORMING
R378	053 CR14-332J-A	RESISTOR 1/4W 3.3K FORMING
R251,252,261,262,273,274,R285,286,297,298 306,359,R360,372,373,379,	053 CR14-472J-A	RESISTOR 1/4W 4.7K FORMING
R848,913,914	053 CR16-010J-A	RESISTOR 1/6W 1R FORMING
R845	053 CR16-122J-A	RESISTOR 1/6W 1.2K FORMING
R838	053 CR16-104J-A	RESISTOR 1/6W 100K FORMING
R802,808-810,834	053 CR16-101J-A	RESISTOR 1/6W 100R FORMING
R803,811-813,911	053 CR16-103J-A	RESISTOR 1/6W 10K FORMING
R843	053 CR16-100J-A	RESISTOR 1/6W 10R FORMING
R847	053 CR16-181J-A	RESISTOR 1/6W 180R FORMING
R814-819,835-837,904,906,910	053 CR16-102J-A	RESISTOR 1/6W 1K FORMING
R846	053 CR16-105J-A	RESISTOR 1/6W 1M FORMING
R828,829,908	053 CR16-222J-A	RESISTOR 1/6W 2.2K FORMING
R839	053 CR16-204J-A	RESISTOR 1/6W 200K FORMING
R821	053 CR16-121J-A	RESISTOR 1/6W 120RF FORMING
R842	053 CR16-223J-A	RESISTOR 1/6W 22K FORMING
R830,831	053 CR16-220J-A	RESISTOR 1/6W 22R FORMING
R844	053 CR16-392J-A	RESISTOR 1/6W 3.9K FORMING
R841,905	053 CR16-472J-A	RESISTOR 1/6W 4.7K FORMING
R826,854,902,903,907,909,912	053 CR16-470J-A	RESISTOR 1/6W 47R FORMING
R840	053 CR16-512J-A	RESISTOR 1/6W 5.1K FORMING
R824,825	053 CR16-563J-A	RESISTOR 1/6W 56K FORMING
R822,823	053 CR16-682J-A	RESISTOR 1/6W 6.8K FORMING
R827	053 CR16-680J-A	RESISTOR 1/6W 68R FORMING
R804-807,849-853	053 CR16-750J-A	RESISTOR 1/6W 75R FORMING
C910	044 50MSAN224J	SF CAP 50V0.22UF
IC201	019 C-2095A38	SPONGE 10X5X3T
C201-248,267,268,273,274,C289,290,295, 296,301,302,C357-359,362,365	044 S50V100PJ	STYROL CAP 50V/100PF(J)
HS3	017 C-4401A01	SUB HEAT SINKER H=25 1025
HS1	017 C-4682A01	SUB HEAT SINKER H=30
HS2,HS4	017 C-4682A03	SUB HEAT SINKER H=60
Q801,802,805,901	033 TA1450-ST	TR 2SA1450AA-ST (PAIR 2SC3708)
Q209-212,303	032 TA1564	TR 2SA1564AC
Q213,304,803,804,902,903	033 TC3708-ST	TR 2SC3708AA-ST(PAIR 2SA1450)
Q201-208,301,302	032 TDTC323TS	TR DTCS323TSTP
D924	034 TRD9.1JST1	ZENER DIODE (AB2)
D921,922	034 TRD12JST1	ZENER DIODE (AB2)
D920	034 TRD27JST1	ZENER DIODE (AB2)
D923	034 TRD4.3EST1	ZENER DIODE (B2)
E-1287A00 POWER SUPPLY PCB ASSY		
CT901	068 B2P3-VH	CONNECTOR WAFER 2P
CN903	068 C-4588A08	CONNECTOR WIRE 3P 200MM
CN905	068 C-4692A18	CONNECTOR WIRE 4P 100MM
CN904	068 C-4588A23	CONNECTOR WIRE 7P 140MM

Parts List (3/7)

SYMBOL	PART NO.	DESCRIPTION
D901	034 T1N4003-TB	DIODE 1N4003-E
F903,F904	036 5ST1.6	FUSE 250VT1.6A
F901	036 5ST1	FUSE 250VT1A
F905,F906	036 5ST2	FUSE 250VT2A
F902	036 5ST315	FUSE 250VT315mA
L901	021 TRL-356	LINE CHOKE COIL LF-2217 150UH
F901-F906	069 C-3417A	MINI FUSE CLIP FF612A
T901	022 T-1074N02	MAIN POWER TRANSFORMER
RL901	063 DG1U-12	RELAY DG12D1-O(M)-2
C901	044 DE1307E472M	SPARK KILLER 4700PF
T902	022 T-1075N01	SUB TRANSFORMER
X-1288B01-11 PCB ASSY		
JK103	066 4TR-2709#10	2P PIN JACK AU (YEL.YEL)
JK101,102,113	066 4TR-2709#7	2P PIN JACK NI (WHT.RED) EARTH
JK107-112	065 YKB21-5103A	3.5DIA MINIATURE JACK (ST)
JK601-603	066 C-4604A02	4P MINI DIN JACK YKF51-5520
JK861	066 C-4721A01	9P PIN JACK AU (RED.BLU.GRN)
C629	043 TC50V103	CERAMIC CAP 50V0.01UF
C100,112,113	043 TC50V473	CERAMIC CAP 50V0.047UF
C603,604,607,608,867,869	043 TC50V104	CERAMIC CAP 50V0.1UF
C161-166	043 TC50V101	CERAMIC CAP 50V100PF
C115,118	043 TC50V103-A	CERAMIC CAP(AXIAL) 0.01UF
C101,102,106,107,119-121	043 TC50V101-A	CERAMIC CAP(AXIAL) 100PF
C108-111	043 TC50V821-A	CERAMIC CAP(AXIAL) 820PF
X101	023 CST10.0MTW	CERAMIC RESONATOR
CNP602	068 C-4688A07	CONNECTOR BASE 7P 14620030
CNP600,601	068 C-4688A11	CONNECTOR BASE 11P 14620040
CP104,CP601	068 B10B-PH-KS	CONNECTOR WAFER 10P
CP101,103,108	068 B3B-PH-KS	CONNECTOR WAFER 3P
CP107	068 B4B-PH-KS	CONNECTOR WAFER 4P
CP602	068 B8B-PH-KS	CONNECTOR WAFER 8P
CN104	068 C-4692A13	CONNECTOR WIRE 10P 80MM
CN407	068 C-4692A15	CONNECTOR WIRE 11P 160MM
CN109	068 C-4661A02	CONNECTOR WIRE 2P 120MM
CN103	068 C-4692A05	CONNECTOR WIRE 3P 450MM
CN101	068 C-4692A03	CONNECTOR WIRE 3P 80MM
CN403	068 C-4692A09	CONNECTOR WIRE 5P 140MM
CN106	068 C-4692A11	CONNECTOR WIRE 7P 140MM
CN404	068 C-4692A10	CONNECTOR WIRE 9P 160MM
D101,102,183-185,601-604	034 T1N4148-86	DIODE 1N4148TAP-50
C601,602,605,606,613-620,622,C624,626 628,863-866,868	041 UTES1A101-FB	E/C 10V100UF FB-FORMING
C621,623,625,627	041 TUTES1A471-TF	E/C 10V470UF TF-FORMING
C609-612,861,862	041 UTES1E470-FB	E/C 25V47UF FB-FORMING
C631,632	041 UTES1H100-FB	E/C 50V10UF FB-FORMING
C114,180-184	041 UTES1H010-FB	E/C 50V1UF FB-FORMING
C630	041 UTES1H2R2-FB	E/C 50V2.2UF FB-FORMING
C117	041 UTES1H4R7-FB	E/C 50V4.7UF FB-FORMING
FIP100	013 TB4-15A00	FL TUBE HOLDER RSP-976
IC100	035 SVR08LM02	FL TUBE RSP-976
IC602,603,862	031 CXP82832-308Q	IC (CPU)
RMC101	031 TSH94N	IC (QUAD OPE)
IC203,204,601,606,861	031 SBX3010-52B	IC (REMOTE EYE)
IC104	031 TC9163AN	IC (SWITCH ALLEY)
CP202,CP202A,CPT602	031 HIN232CP	IC (TRANSMITTER RECEIVER)
	068 C-4687A07	PCB CONNECTOR 35210-0710

Parts List (4/7)

SYMBOL	PART NO.	DESCRIPTION
CP200,201,200A,201A,CPT600,601	068 C-4687A11	PCB CONNECTOR 35210-1110
X-1288A09	013 4TTU-13	PCB SUPPORT
IC101,102	031 PC817B	PHOTO COUPLER
SW100	061 4TR-3011	PUSH SWITCH SPPJ22
R172,174,641-648,874,880,886	053 CR16-101J-A	RESISTOR 1/6W 100R FORMING
R114-119,638,649-656,R673,674,873,879,885	053 CR16-103J-A	RESISTOR 1/6W 10K FORMING
R175,176	053 CR16-100J-A	RESISTOR 1/6W 10R FORMING
R637	053 CR16-123J-A	RESISTOR 1/6W 12K FORMING
R121,639	053 CR16-181J-A	RESISTOR 1/6W 180R FORMING
R101,102,123-126,151-156,R171,173,188,189, 657-672,R871,872,877,883,884,887	053 CR16-102J-A	RESISTOR 1/6W 1K FORMING
R632	053 CR16-222J-A	RESISTOR 1/6W 2.2K FORMING
R635	053 CR16-272J-A	RESISTOR 1/6W 2.7K FORMING
R627-630,867,868	053 CR16-221J-A	RESISTOR 1/6W 220R FORMING
R869,875,881	053 CR16-223J-A	RESISTOR 1/6W 22K FORMING
R631	053 CR16-333J-A	RESISTOR 1/6W 33K FORMING
R122	053 CR16-472J-A	RESISTOR 1/6W 4.7K FORMING
R105-108,110-113,157-162,R187,634	053 CR16-473J-A	RESISTOR 1/6W 47K FORMING
R120,600	053 CR16-470J-A	RESISTOR 1/6W 47R FORMING
R633	053 CR16-560J-A	RESISTOR 1/6W 56R FORMING
R617,618	053 CR16-680J-A	RESISTOR 1/6W 68R FORMING
R601-616,861-866,870,876,882	053 CR16-750J-A	RESISTOR 1/6W 75R FORMING
JK114	066 SY010-8P/K	RJ45 TERMINAL
ESW102,103	056 C-4678A02	ROTARY ENCODER (TONE)
ESW101	056 C-4678A01	ROTARY ENCODER (MASTER VOLUME)
IC601	019 C-2095A38	SPONGE 10X5X3T
	019 C-2095A36	SPONGE 32X17X5T
SW101-116	061 C-4679A01	TACT SW 9.5MM RED SKQNAND010
Q600,601	032 TA1450-ST	TR 2SA1450AA-ST
Q602	032 TA1564	TR 2SA1564AC
Q101	033 TC3708-ST	TR 2SC3708AA-ST
Q603-605	032 TC4048	TR 2SC4048AC
ZD180-183	034 TRD12JST1	ZENER DIODE (AB2)
E-1285 DIGITAL PCB ASSEMBLY		
	092 E-1285A00	PCB ASSEMBLY (REV2.0)
C402,4006,410,C514,CSW502,503	3536223122	CAP C 2012 CHIP 0.022UF/50V J
C404,408,412,CAL/R408,CSW707	3536222122	CAP C 2012 CHIP 2200PF/50V J
C411,C407,C403	3536470122	CAP C 2012 CHIP 47PF/50V J
C415,419,421,424,426,427,432,433,435,438, 440,442,446-449,450-454,500-513,515,518, 519,522-524,554,703,704,CAL/R402,CC710, CCW501,503,505,506,510,CD506,507, CF501,503,505,506,510,CS501,503,505,506 510,707,CF709,CSW702,719	3536104122	CAP C 2012 CHIP 0.1UF/50V J
C418,423	3536221122	CAP C 2012 CHIP 220pF/50V J
C420,425,428,434,436,437,439,441,CAL/R401, CAL/R403,CC504,CC701,CC704-706,CC709, CDL/R501,CDL/R503,CFL/R504,CFL/R701-2, CFL/R705-708,CFL/R715,CML/R701,CML/R704, CSL/R504,CSL/R701,CSL/R704-706,CSL/R709, CSW504,701,704,705,708,709,712-715,718	3479310071	CAP E SG 10uF/50V
C443,444,CFL/R713	3536270122	CAP C 2012 CHIP 27PF/50V J
C517	3479322971	CAP E SG 2.2UF/50V
C520,C521,CFL/R714	3479310971	CAP E SG 1uF/50V
C551	3479333971	CAP E SG 3.3UF/50V

Parts List (5/7)

SYMBOL	PART NO.	DESCRIPTION
C552	3479322871	CAP E SG 0.22UF/50V
C553	3439210415	CAP BACK-UP 0.1F/5.5V
CA401,402,C516,CCW502,504,507,508, 701-706,CM701,702,CD502,503,CS502,504, CS507,508,CS701-706,CD504,505,CF502,504, 507,508,701-708,C701,702,CSW730,731	3479347041	CAP E SG 47uF/25V
CAL/R404,CAL/R406,CD501,CDL/R502, CFL/R505,CFL/R703-704,CML/R702-703,CC505 CC702,703,707,708,CSL/R505,CSL/R702,703, CSL/R707-708,CSW505,703,716,717	3536101122	CAP C 2012 CHIP 100PF/50V J
CFL/R501,CSL/R501,CC501,CSW501	3536331122	CAP C 2012 CHIP 330PF/50V J
CFL/R709	3679683120	CAP MYLAR 0.068UF/100V J
CFL/R710	3679123120	CAP MYLAR 0.012UF/100V J
CFL/R711	3679272120	CAP MYLAR 0.0027UF/100V J
CFL/R712	3679223120	CAP MYLAR 0.022UF/100V J
CP407	4428511476	CNT PLUG ST JST B11B-PH-K
CP551	4428512476	CNT PLUG ST JST B12B-PH-K
CP552	4428509476	CNT PLUG ST JST B09B-PH-K
CP553	4428505476	CNT PLUG ST JST B05B-PH-K
CP554	4428515476	CNT PLUG ST JST B15B-PH-K
CP555	4428504476	CNT PLUG ST JST B04B-PH-K
CS509,CF509,CCW509,C445	3479310071	CAP E SG 10uF/50V
CSL/R502-503,CFL/R502-503,CC502-503	3536271122	CAP C 2012 CHIP 270PF/50V J
CSW706,710	3536563122	CAP C 2012 CHIP 0.056UF/50V J
CSW711	3536822122	CAP C 2012 CHIP 8200PF/50V J
D400-403	2257104100	DIODE CHIP KDS226RTK
D551-556	2257103110	DIODE CHIP KDS184RTK
H551	4428810966	JUMPER HEADER 10P P2.5 H3.0
IC400-401	2408218001	OPTO JACK TORX-178B
IC402	2408008001	OPTO JACK TOTX178B
IC403-405,407	2138001135	IC 74HCU04
IC408-409,IC509-512,IC701-705,IC710-712	2168220142	IC NJM5532M DUAL OPAMP
IC410	2139214002	IC AK5351 (20bit ADC)
IC411	2139214001	IC AK4110 (96kHz/24bit DIR)
IC412-413, IC504	2108019128	IC 74HCT125
IC414	2109001100	IC 74VHC157M (210802112 74HC157)
IC501-502	2109001150	IC 74VHC 574M
IC503	2138408003	IC AT27C020-70PC (PROM)
IC505	2138112002	IC CS492604-CL
IC506-508	2139214003	IC AK4324 (96kHz/24bit DAC)
IC513,713	2168020108	IC NJU7311AM (ANALOG SWICH)
IC514	2168639100	IC BA033FP-E2 REG.
IC515	2138322012	IC CXP81952-572Q
IC706-708	2138007120	IC TC9459F (ELECT VOL)
IC709	2138007130	IC TC9184P (ELECT TONE)
L401-405,L503-505	2648702148	BEAD COIL CHIP 2012 CIM 21J 102
L501,L502	2648702149	BEAD COIL CHIP 2012 CIM 21P 110
Q400-404,555	2207606010	TR CHIP NPN KRC107S
Q551-554,QC703,QFL/R701,QSL/R701, QSW703,,Q556	2207606011	TR CHIP NPN KRC231S
QC702,QF702,QS702,QSW702	2207206010	TR CHIP PNP KRA107S
R401-403	3099750170	RES CHIP 2012 75 J
R404,411,418,435,438-444,513-515, 552,RA401,402	3099101170	RES CHIP 2012 100 J
R405,412,419,RC507,702,705,707,709,712, RDL/R501,RDL/R503,RFL/R507,RFL/R703, RFL/R706,RFL/R708-709,RFL/R711,RFL/R720,	3099104170	RES CHIP 2012 100K J

Parts List (6/7)

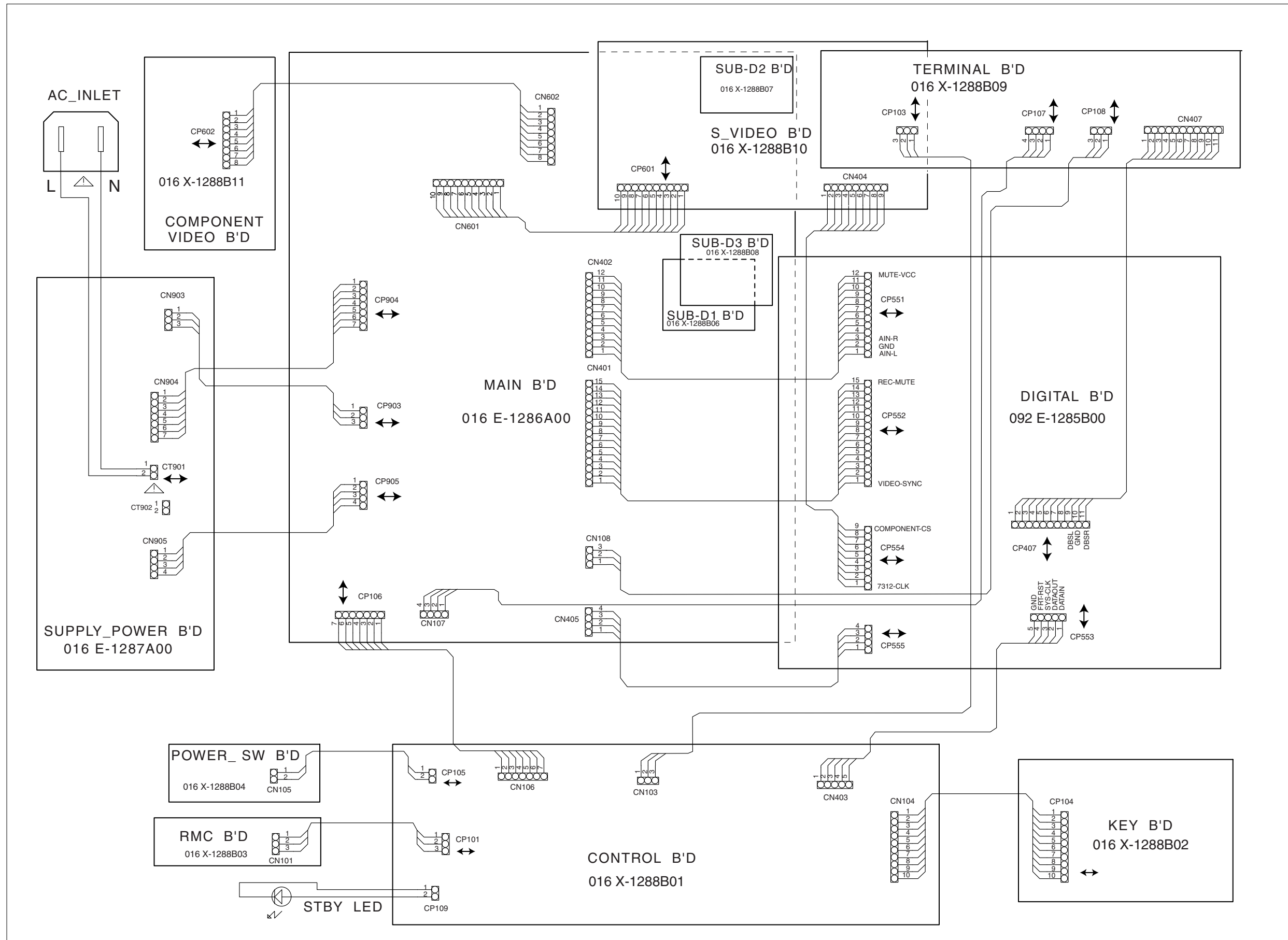
SYMBOL	PART NO.	DESCRIPTION
RML/R702,RML/R704,RSL/R507,RSL/R702, RSL/R705,RSL/R707,RSL/R709,RSL/R712, RSW507,702,704,707,710,712,715,716,718, 720,723		
R406,413,420,432,433,701,702,RC508,509, RCW701-704,708,709,RD501-507,RF501,502 701-704,708,709,RM701,702,RS501,502, 701-704,708,709	3099221170	RES CHIP 2012 220 J
R407,410,414,417,421,424,426,427,429,430, 451,500-507,510,516,518,519,521,522,524, 531-533,561-564,567-573,	3099103170	RES CHIP 2012 10K J
RAL/R401-402,RAL/R404,RC703,RSL/R703 RML/R703,RSW703,714,RSL/R710,RC710 R408,415,422,511,512,517,520,551,	3099472170	RES CHIP 2012 4K7 J
RAL/R405-407,RDL/R502,RFL/R704-705,713 RSL/R704,RC704,RSW713,R554-557 R409,416,423,558,703-705,RF707,712-714, RC506,701,706,708,713,RFL/R701-702, RFL/R707,RFL/R710,RML/R701,RCW705-707, RS705-707,RSL/R506,RSL/R701,RSL/706, RSL/R708,RSL/R713,RF705,706,RSW506,701, 705,706,711,717,719,724,RFL/R721	3099102170	RES CHIP 2012 1K J
R425,428,431,436,452-455,508	3099100170	RES CHIP 2012 10 J
R445,RSW708,RSW714	3099912170	RES CHIP 2012 9K1 J
R446,RC501-505,RFL/R501-505, RSL/R501-505,RSW501-505,RFL/R716	3099562170	RES CHIP 2012 5K6 J
R526,528,535-536,539,C417,C422	3099000170	RES CHIP 2012 0R J
RAL/R403	3099473170	RES CHIP 2012 47K J
RAL/R408-409,R434	3099331170	RES CHIP 2012 330 J
RC714,RF715,RS710,RSW725,RF716,RS711, RC715,RSW726,RF716,RS711,RC715,RSW726	3099104170	RES CHIP 2012 100K J
RF503,RS503,RC510,RF710,711	3099561170	RES CHIP 2012 560 J
RFL/R712	3099393170	RES CHIP 2012 39K J
RFL/R714	3099564170	RES CHIP 2012 560K J
RFL/R715	3099273170	RES CHIP 2012 27K J
RFL/R717	3099122170	RES CHIP 2012 1K2 J
RFL/R718	3099474170	RES CHIP 2012 470K J
RFL/R719	3099823170	RES CHIP 2012 82K J
RFL/R722	3099222170	RES CHIP 2012 2K2 J
RSL/R711,RC711	3099182170	RES CHIP 2012 1K8 J
RSW709	3099392170	RES CHIP 2012 3K9 J
RSW713	3099682170	RES CHIP 2012 6K8 J
RSW721	3099183170	RES CHIP 2012 18K J
RSW722	3099821170	RES CHIP 2012 820 J
RSW730,731	3099560170	RES CHIP 2012 56 J
XT401	3908101130	X-TAL 12.288MHZ
XT551	3938124010	RESONATOR CST10.0MTW-TF01
	4438100220	JACK RCA 4P(WW,RR)
	4438100530	JACK RCA 3P(B)
	4438100730	JACK RCA 1P(B)
	4438100920	JACK RCA 2P (B,B WOOFER)
	4448402966	JUMPER SHUNT 2P P2.5
	MISCELLANEOUS	
	4TR-1988A#2	BUTTON SPRING 9.8F
	QZ3-05A02	BOTTOM BOARD

Parts List (7/7)

SYMBOL	PART NO.	DESCRIPTION
	FP-520B	FRONT PANEL
	C-4462A06	FILTER BOARD 36X131
	TB3-02B01	FRONT CHASSIS
	SEL1124R	LED (RED) 1X5
	4TR-2797#3	ORNAMENT SIDE BOARD 109MM
	4TSH-19#2	PLASTIC FOOT 50F
	4TTL-15	PUSH BUTTON CONNECTOR 18.5L
	SD4-16A00	PUSH BUTTON 12F
	SD4-17A00	PUSH BUTTON RING 12F
	4TQS-7#7	PANEL WINDOW 132.8X38.8
	C-4525A00T	SENSOR WINDOW 11F
	C-2095A26	SPONGE 75X5X5T
	TB3-18A00	TACT BUTTON 16 KEY
	C-4621A01	AC CORD SET USA
	C-4622A01	AC CORD SET SUSTRALIA
	C-4623-A01	AC CORD SET U.K
	C-4624-A01	AC CORD SET EUROPE
	C-4629A01	AC INLET 6102.3100
	OMADDRSP-976-V01	ADDENDUM MANUAL
	TB4-22A01	INSIDE CARTON
	4TVL-8#10	INSERT BUSH 20MM
	TB3-17A00	KNOB 13F (NO MARK)
	TB3-16A00	KNOB 44F (NO MARK)
	OMRSP-976-V2	OWNER'S MANUAL
	FRSP-976-V2	PANEL ASSY
	C-930-T	PIN PLUG SHIELD CORD
	C4616A01	RUBBER SHEET 60X30X5T
	TZ-158	STYROL SIDE MUOLDING
	C-4550A18	UPPER COVER
	4TR-2418	UPPER COVER SPACER

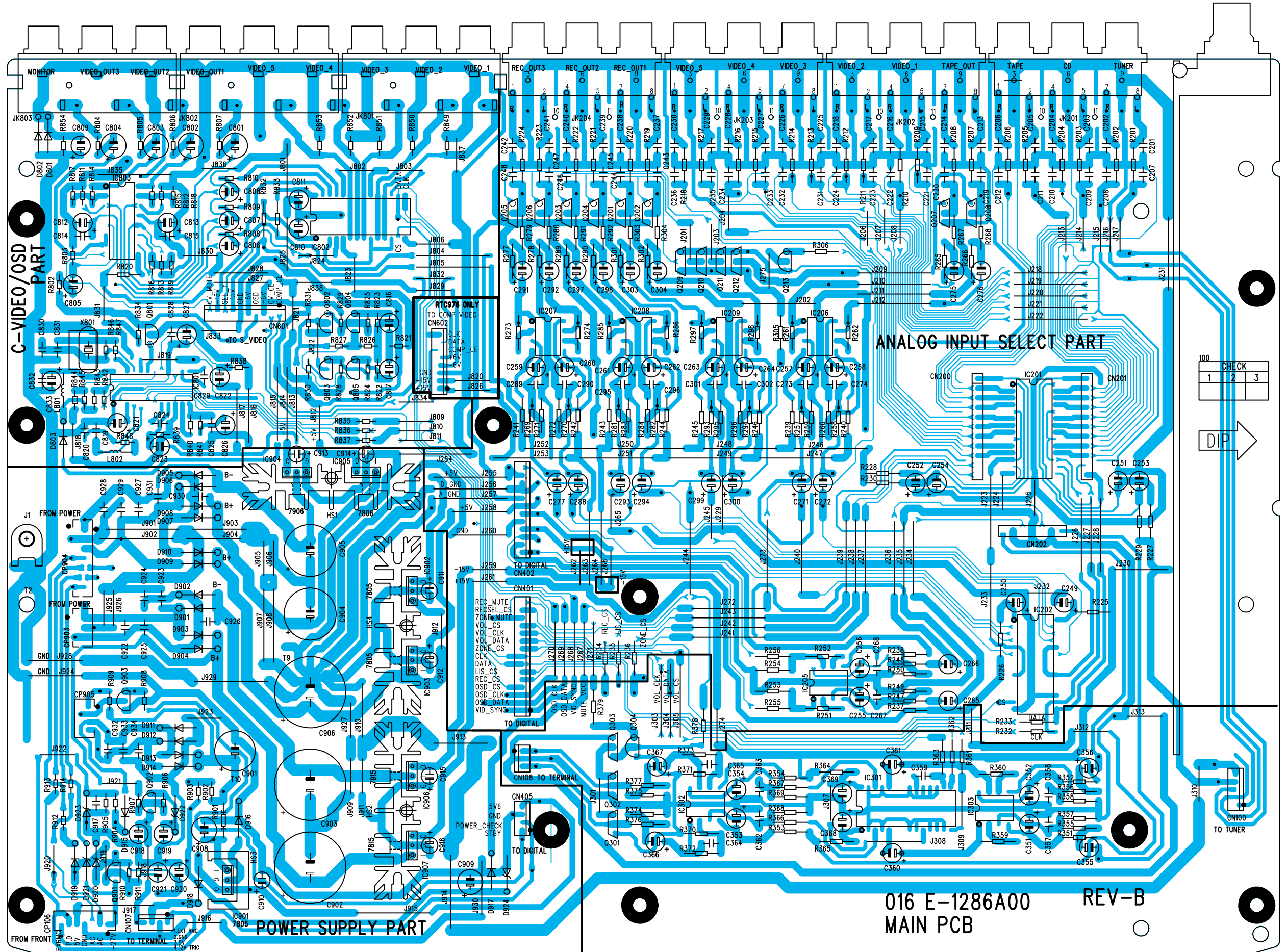
WIRING DIAGRAM

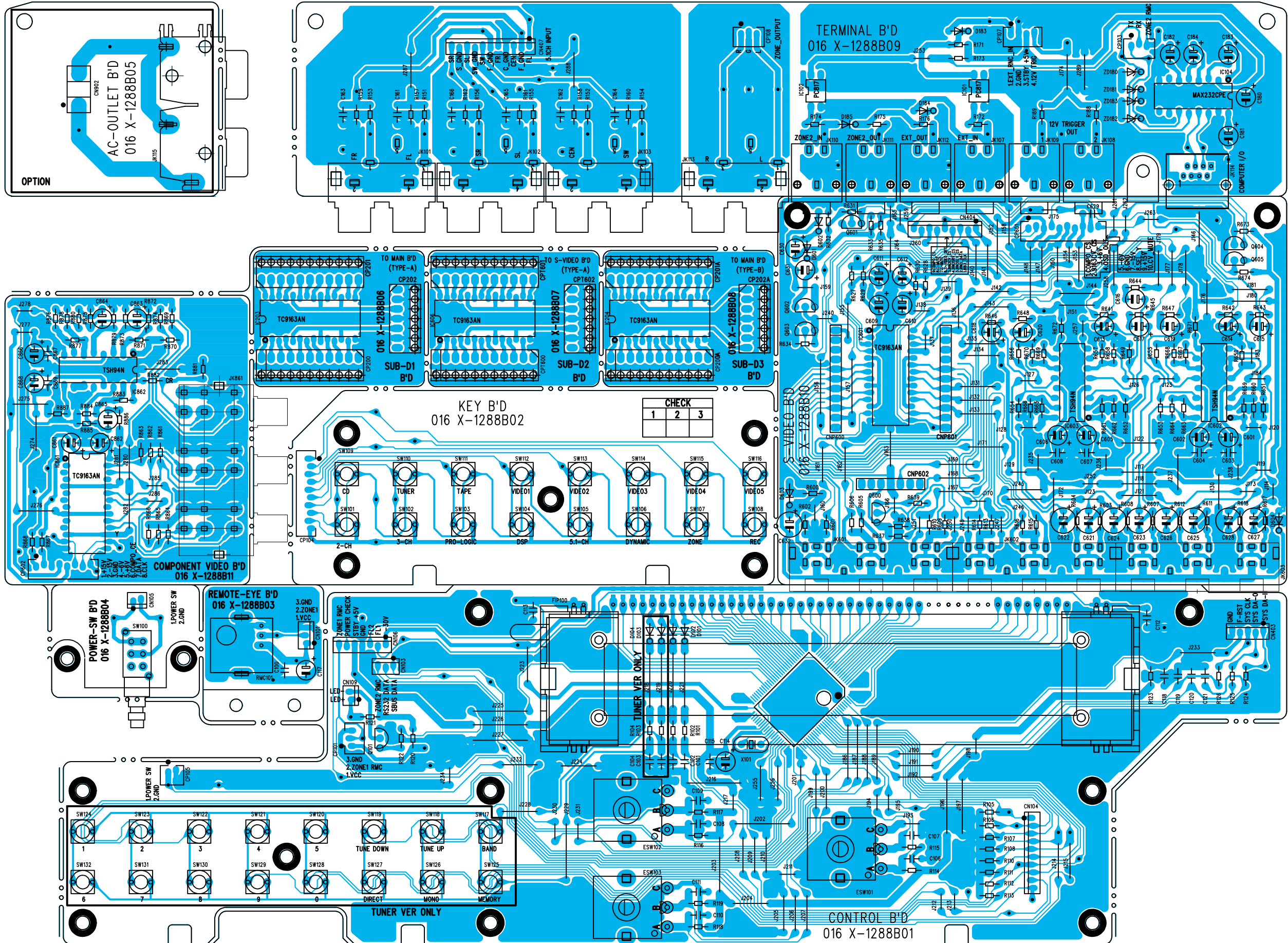
↔ Marked Plug side of connector



PCB Assembly

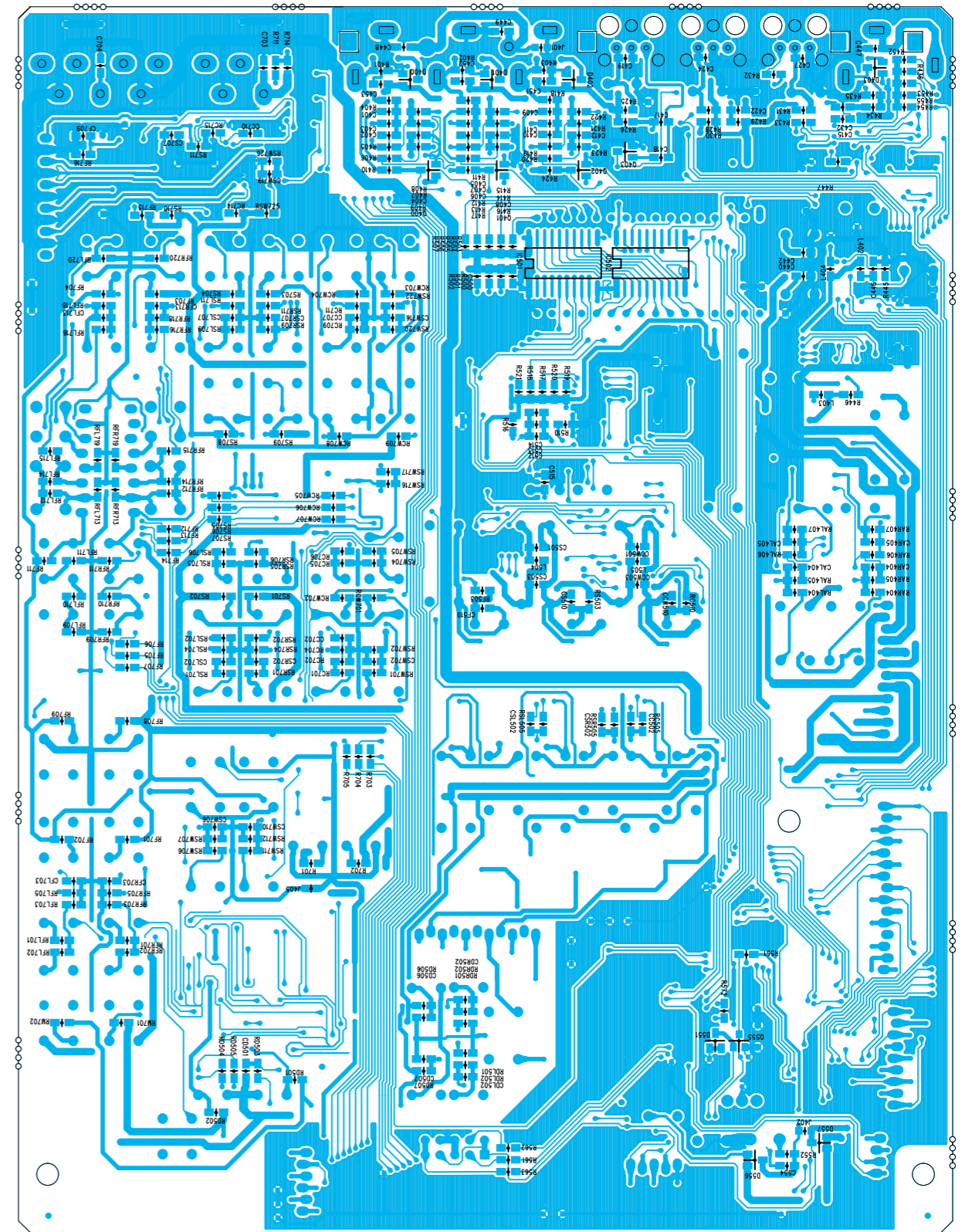
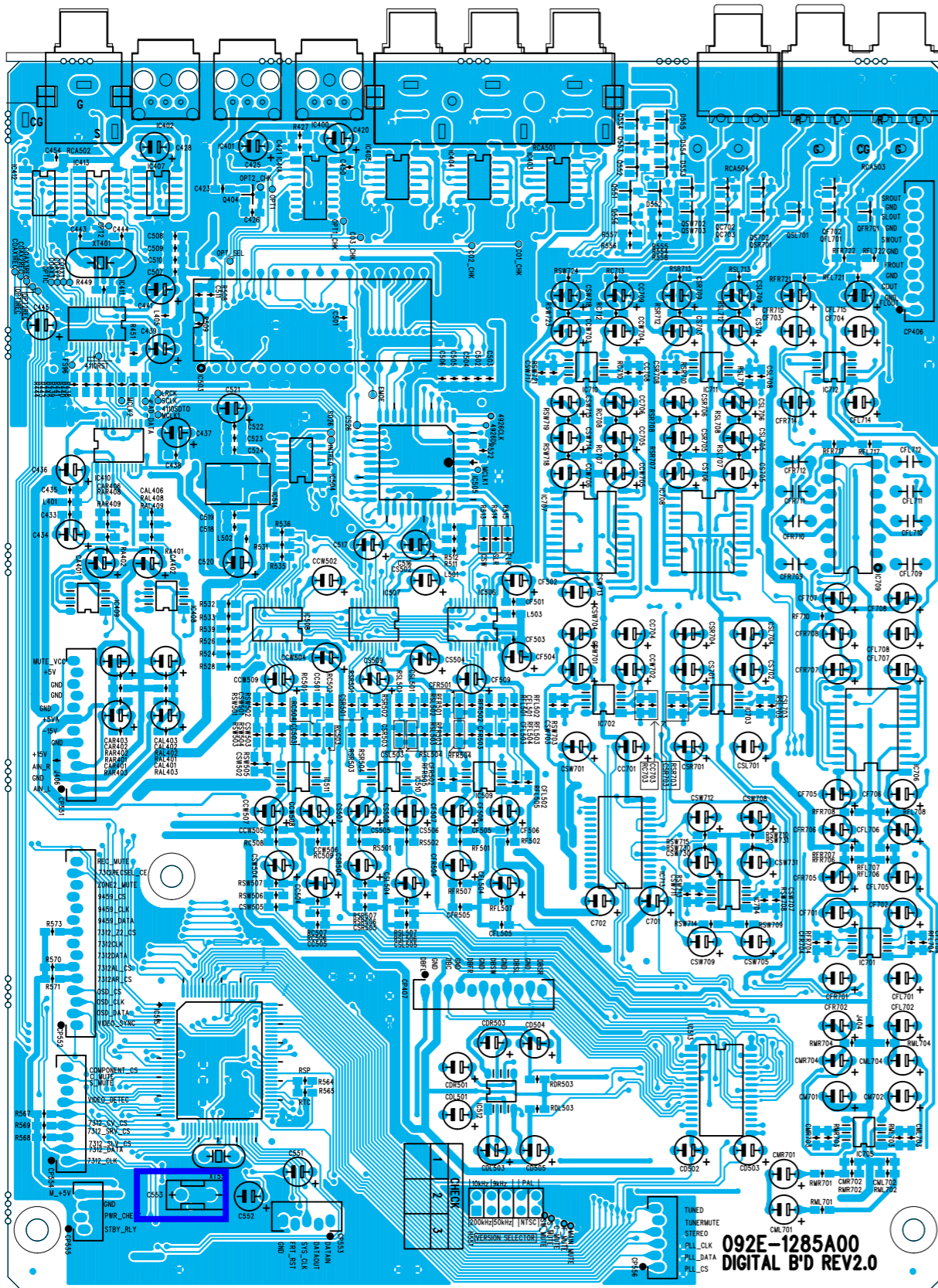
E-1286A00



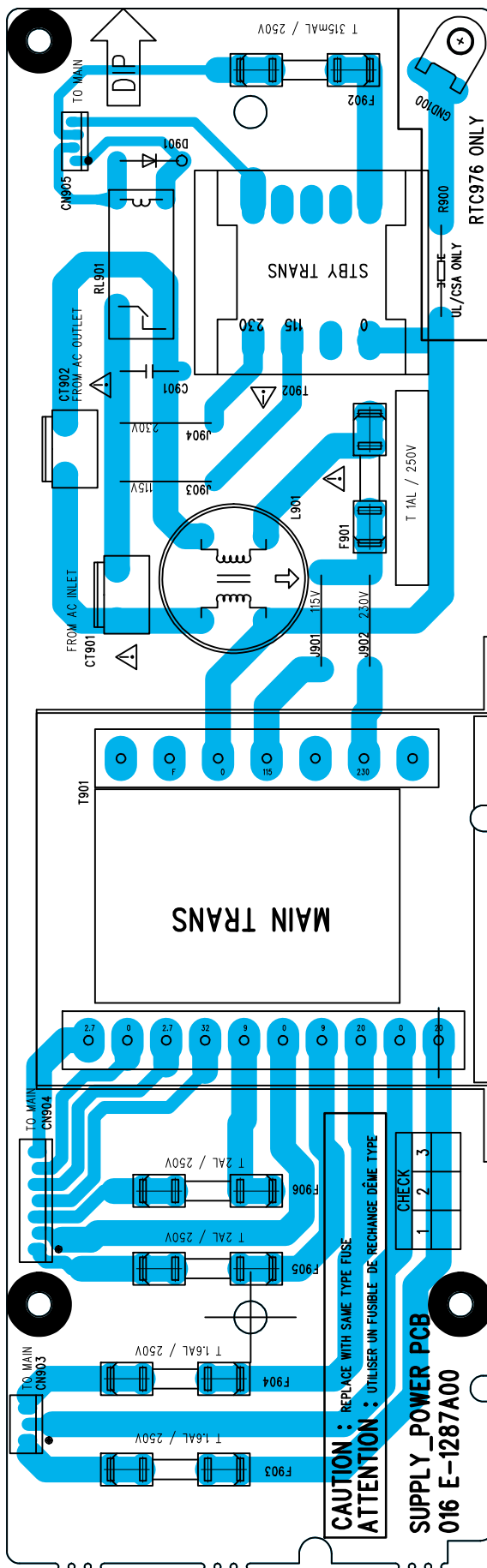


E1285A00 TOP VIEW

E1285A00 BOTTOM VIEW

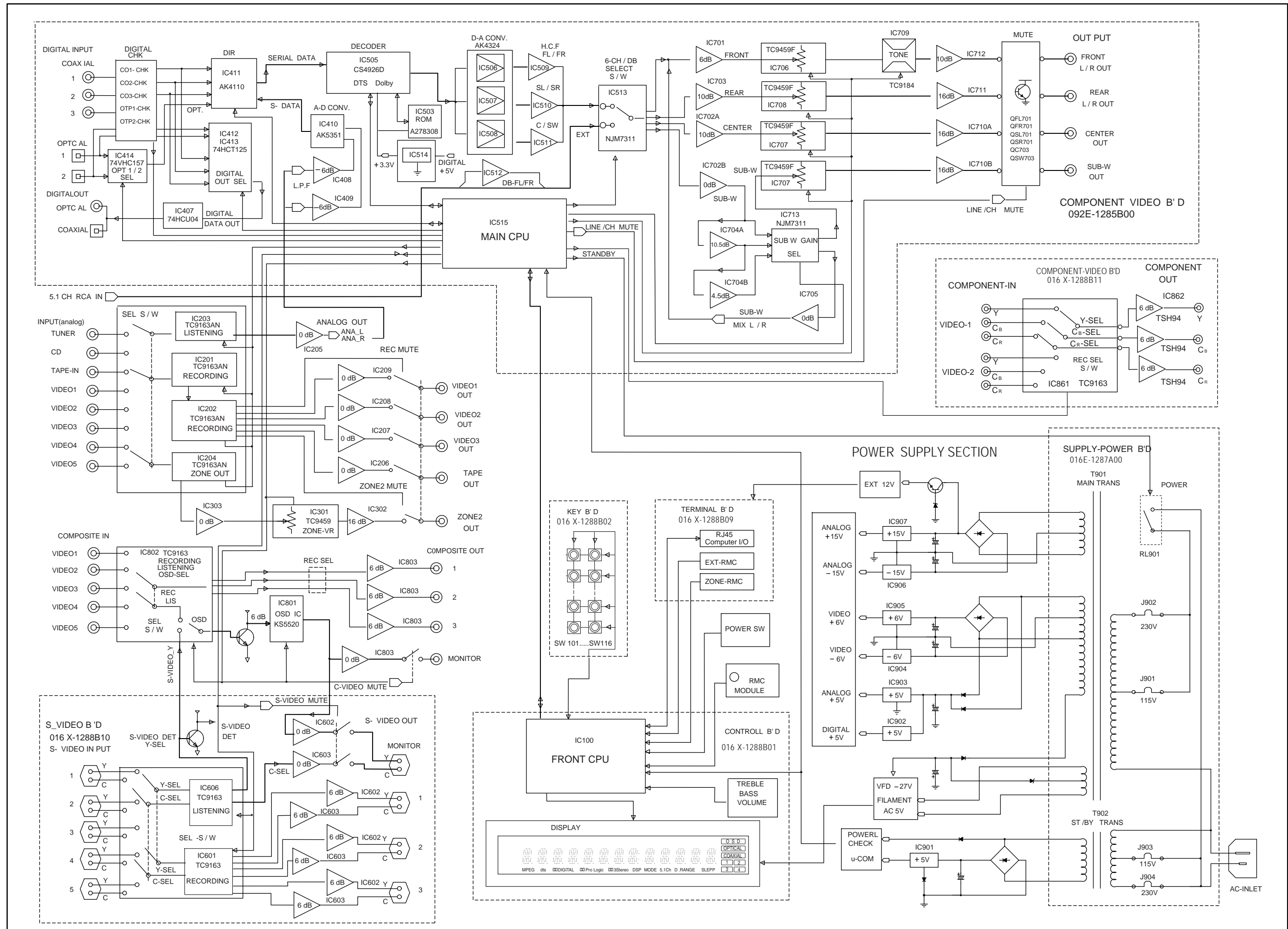


E-1287A00

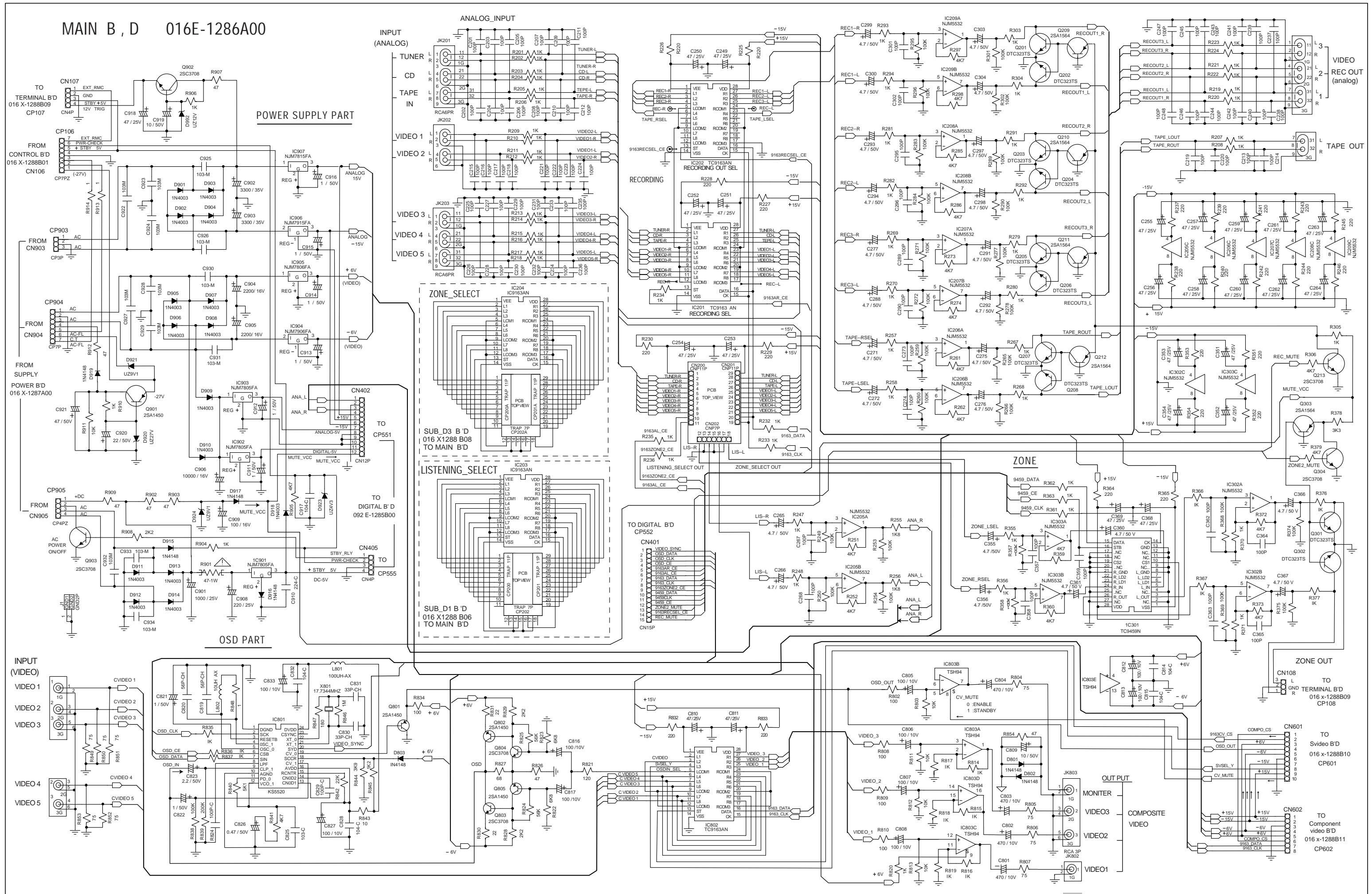


Meno

BLOCK DIAGRAM



Schematic Diagram



Schematic Diagram

1

2

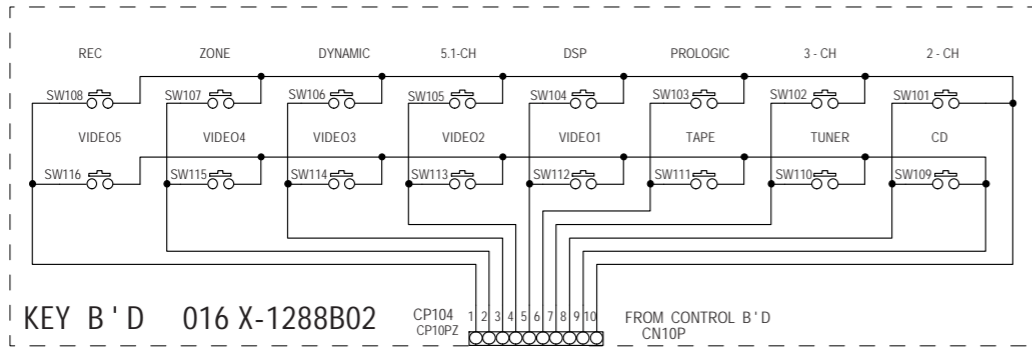
3

4

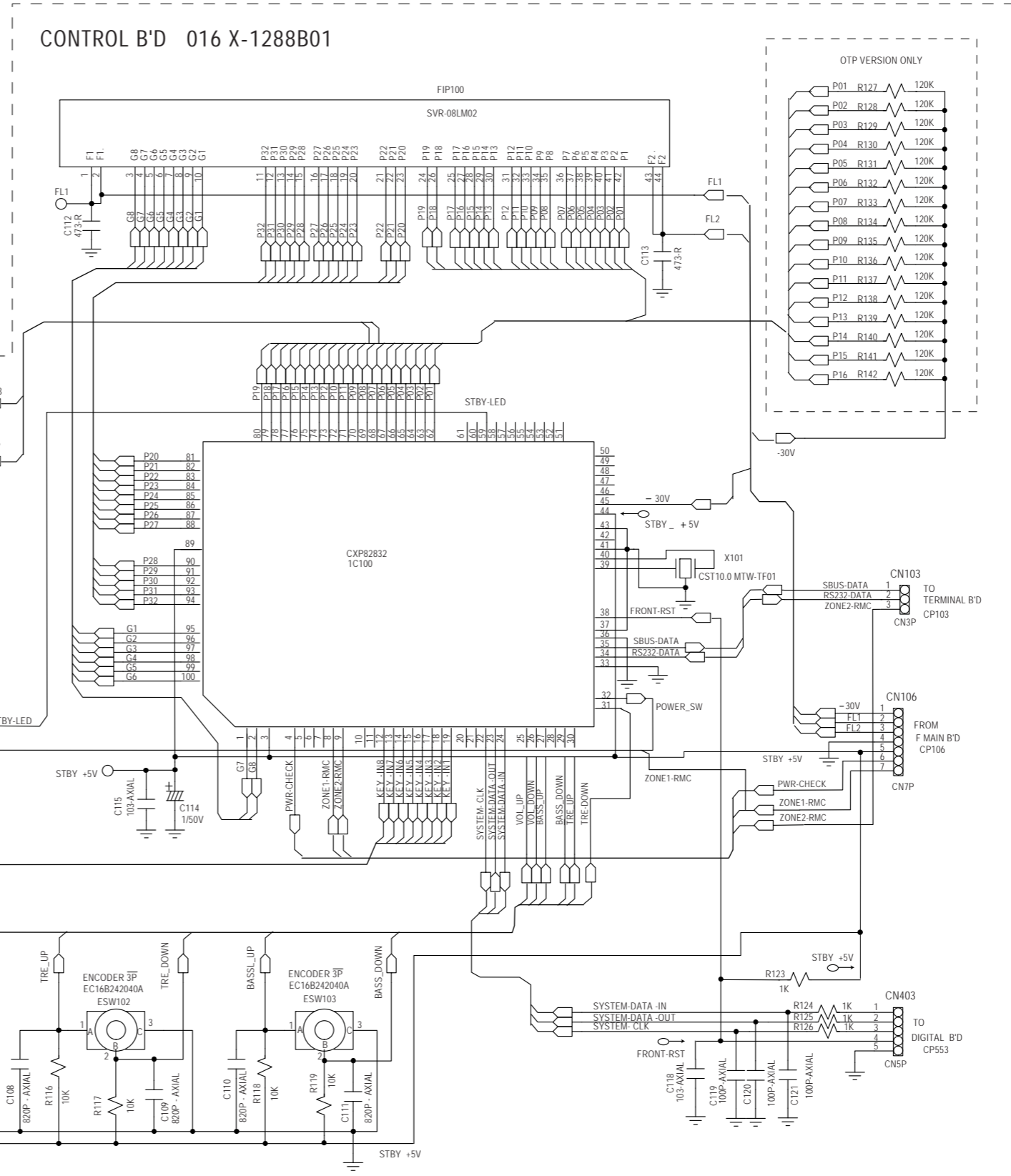
5

6

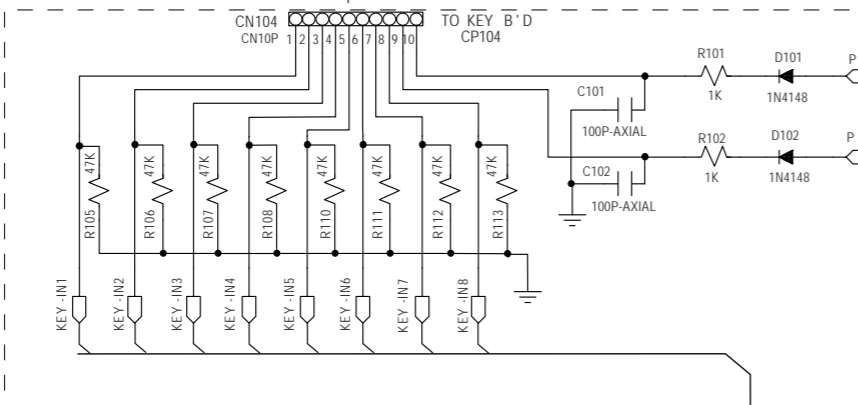
A



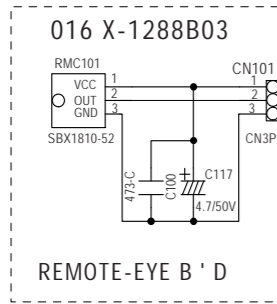
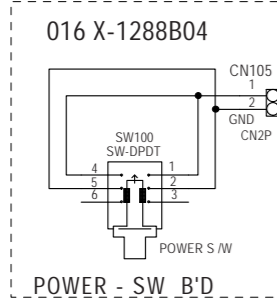
CONTROL B'D 016 X-1288B01



B



C



D

Schematic Diagram

1

2

3

4

5

6

A

B

C

D

S-VIDEO B'D
016 X-1288B10

RECORDING
BUFFER AMP.

RECORDING .SEL.

LISTENING-SEL.

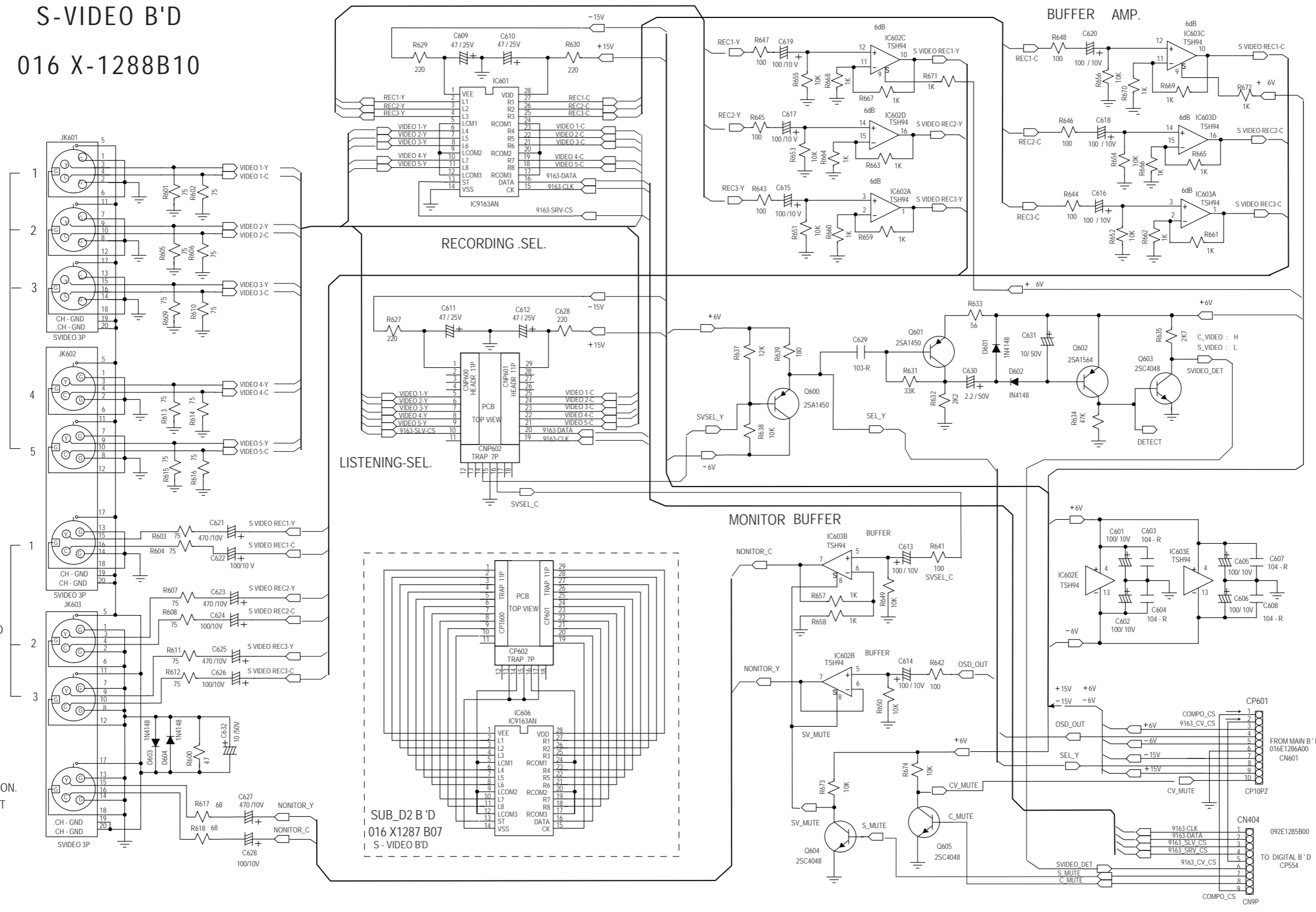
MONITOR BUFFER

SUB_D2 B'D
016 X1287 B07
S-VIDEO B'D

S-VIDEO IN

S-VIDEO OUT

S-MON. OUT



Schematic Diagram

1

2

3

4

5

6

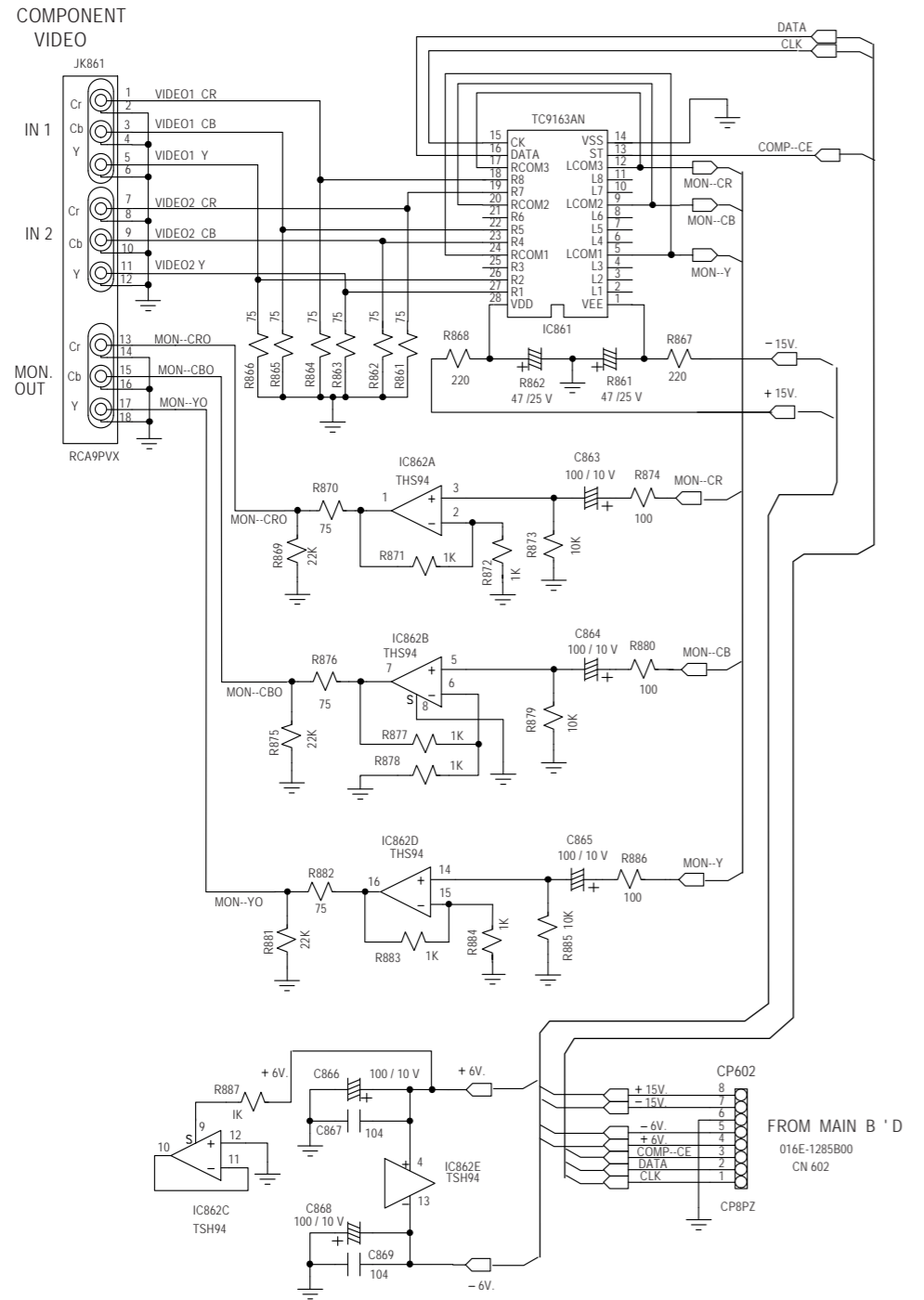
A

B

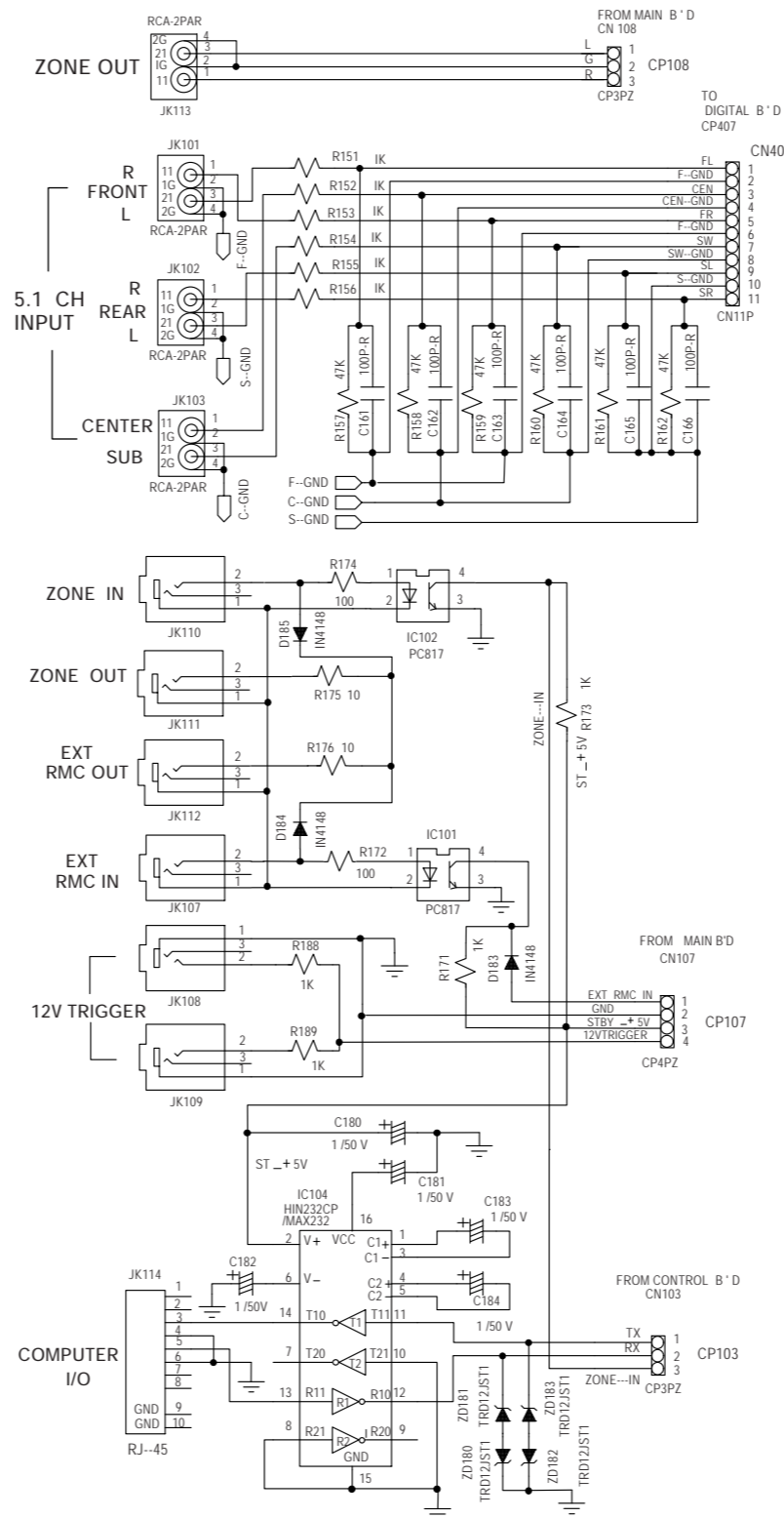
C

D

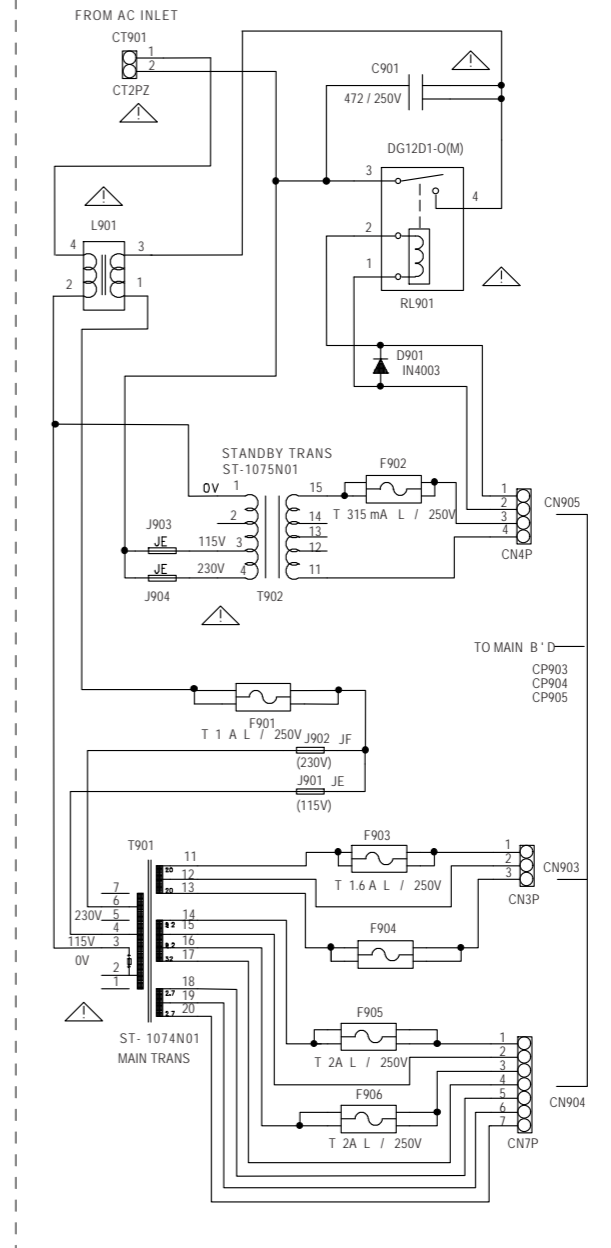
COMPONENT VIDEO B'D 016 X-1288 B11



TERMINAL B'D

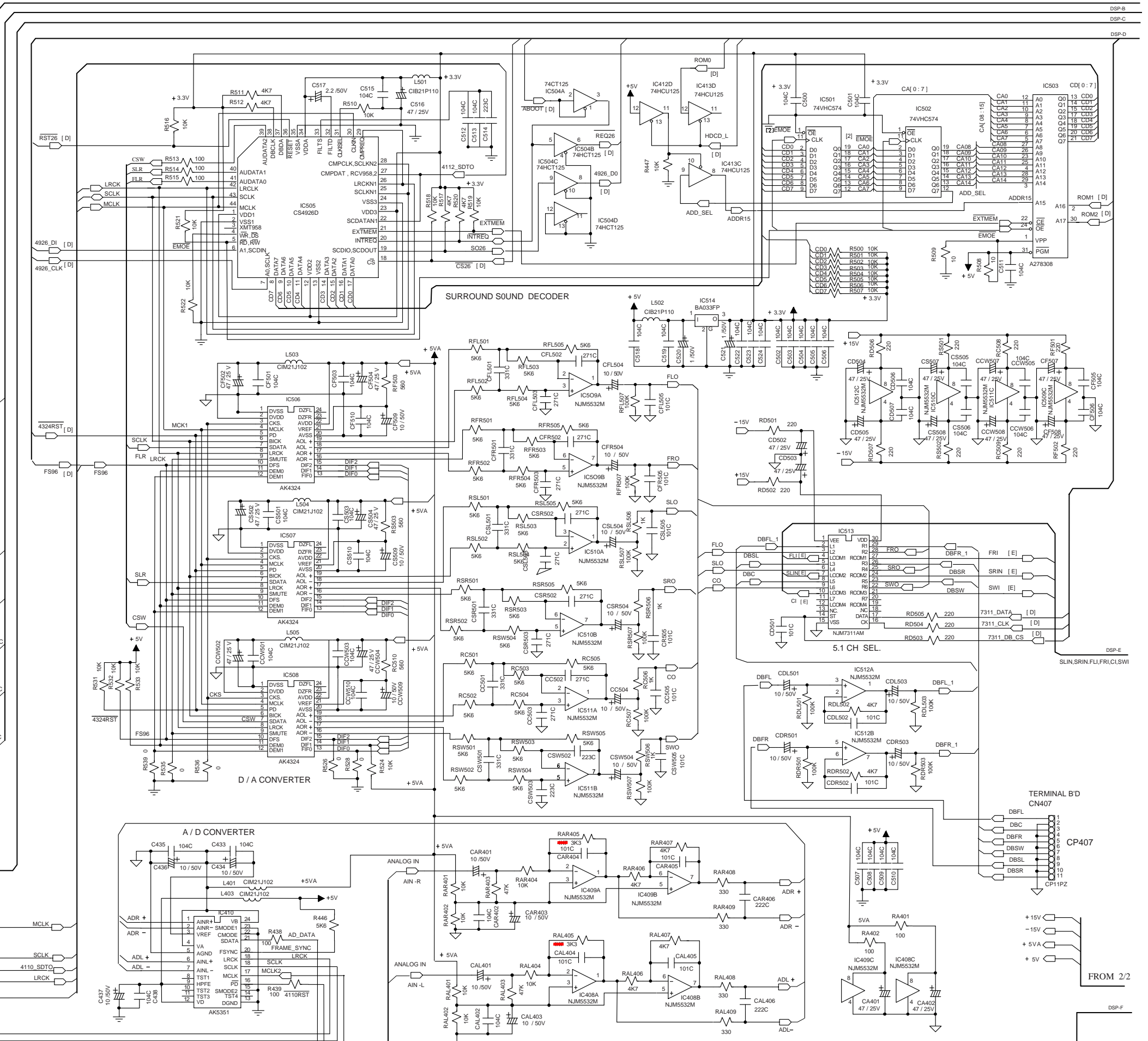
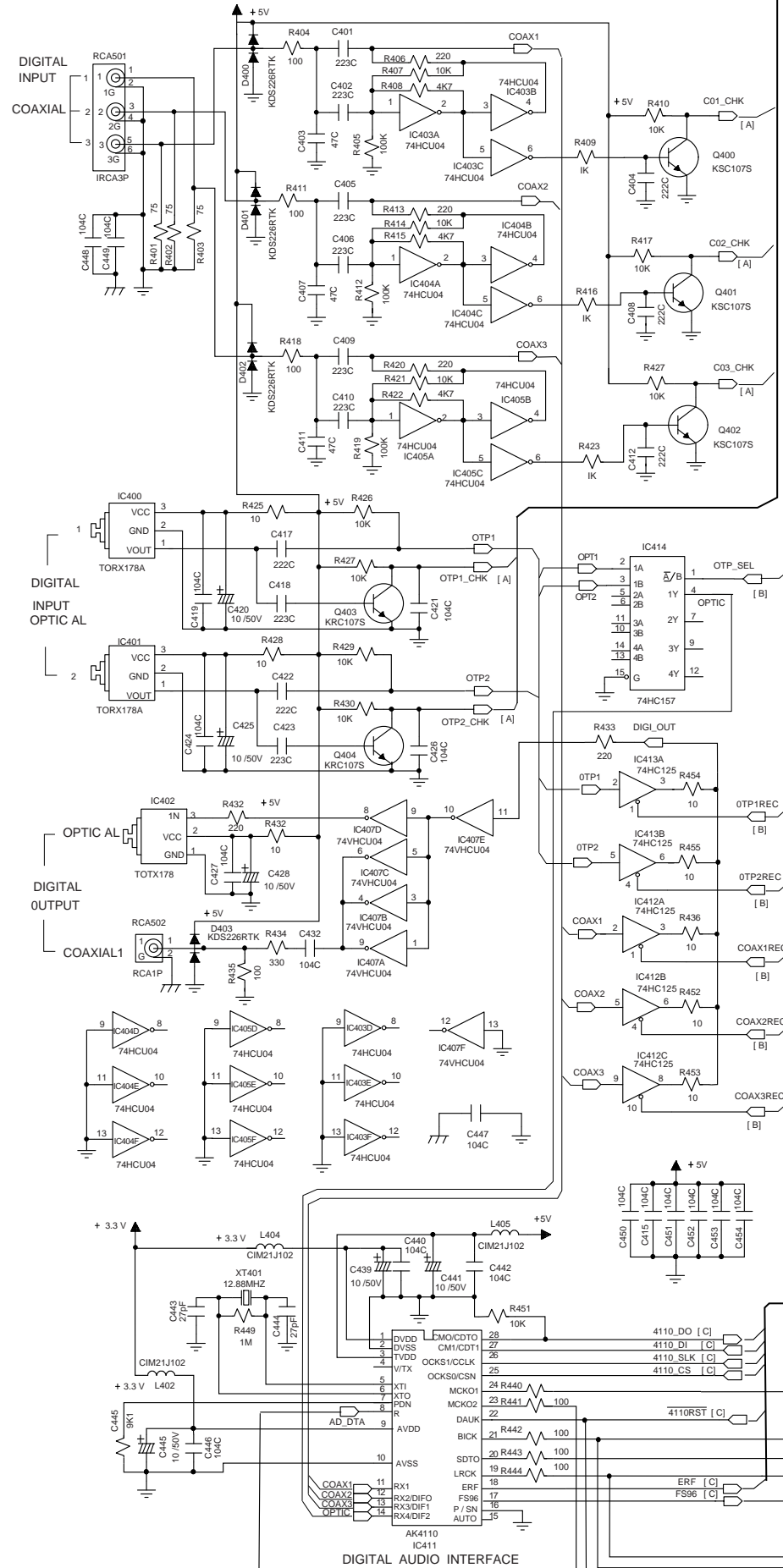


SUPPLY POWER B'D 016 E-1287A00



Schematic Diagram

DIGITAL B'D 092 E-1285B00 (1/2)



Schematic Diagram

DIGITAL B'D 092 E-1285B00 (2/2)

