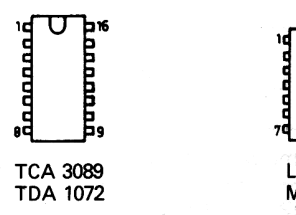
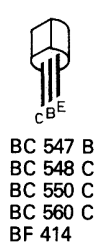
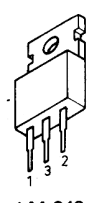
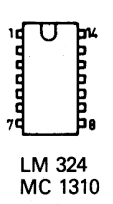
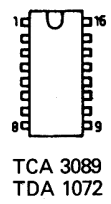
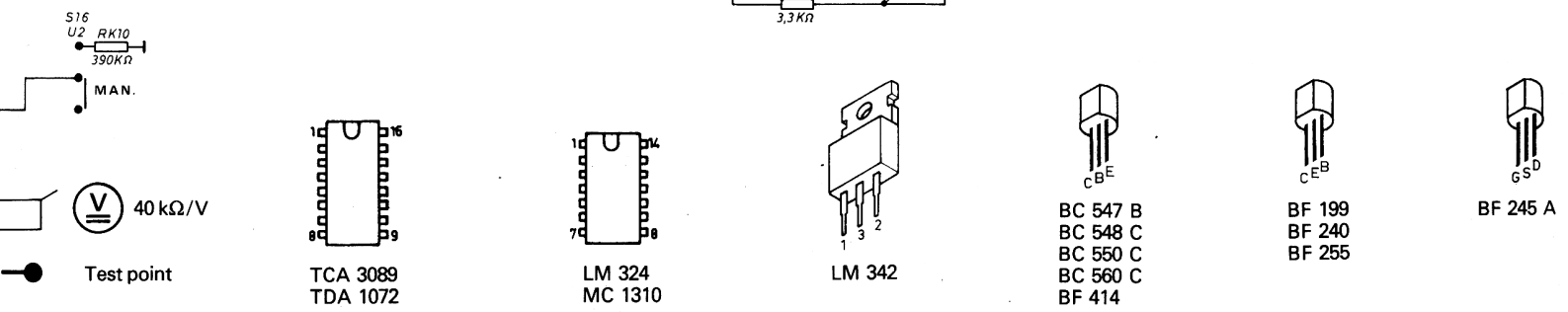
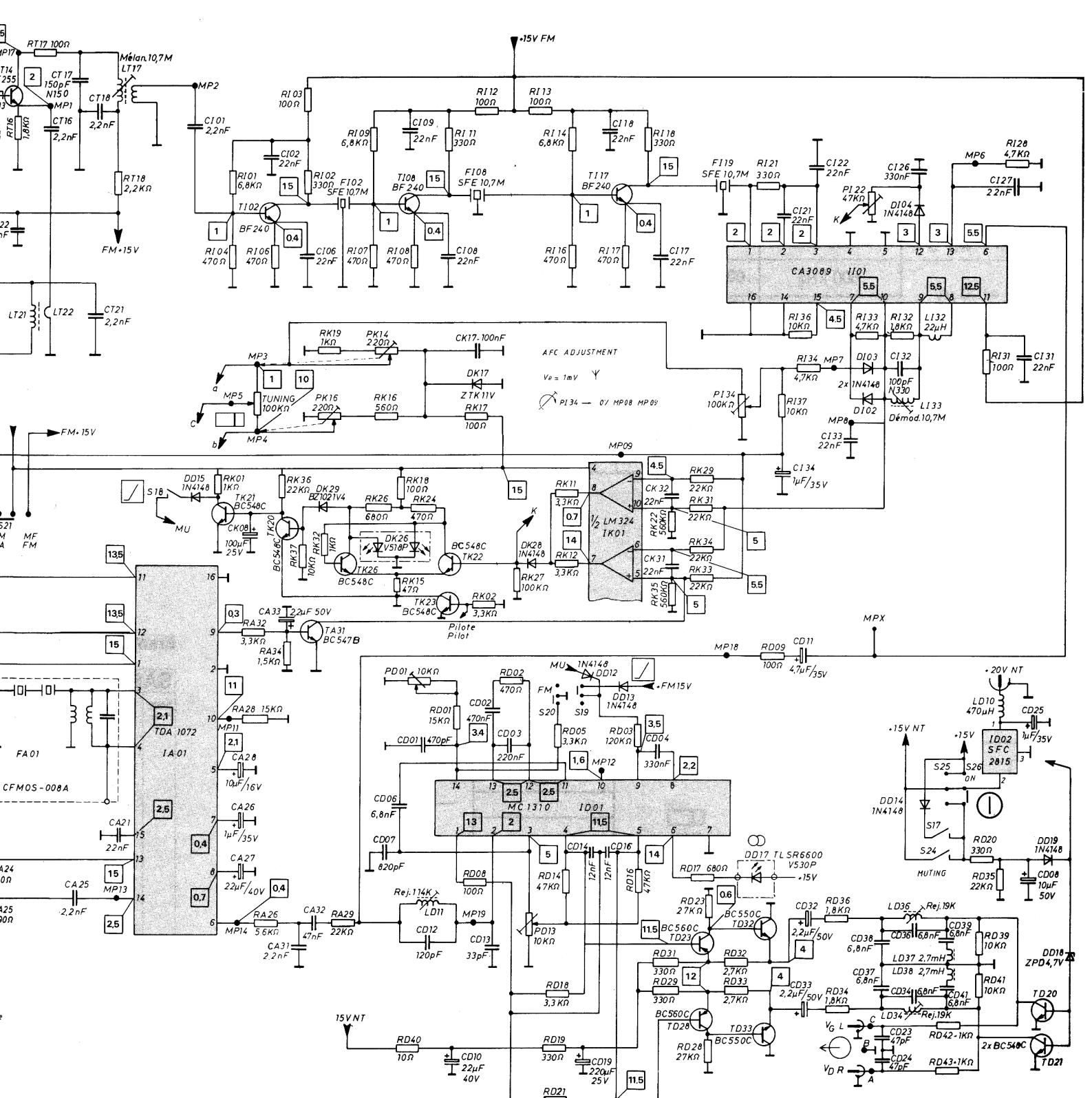
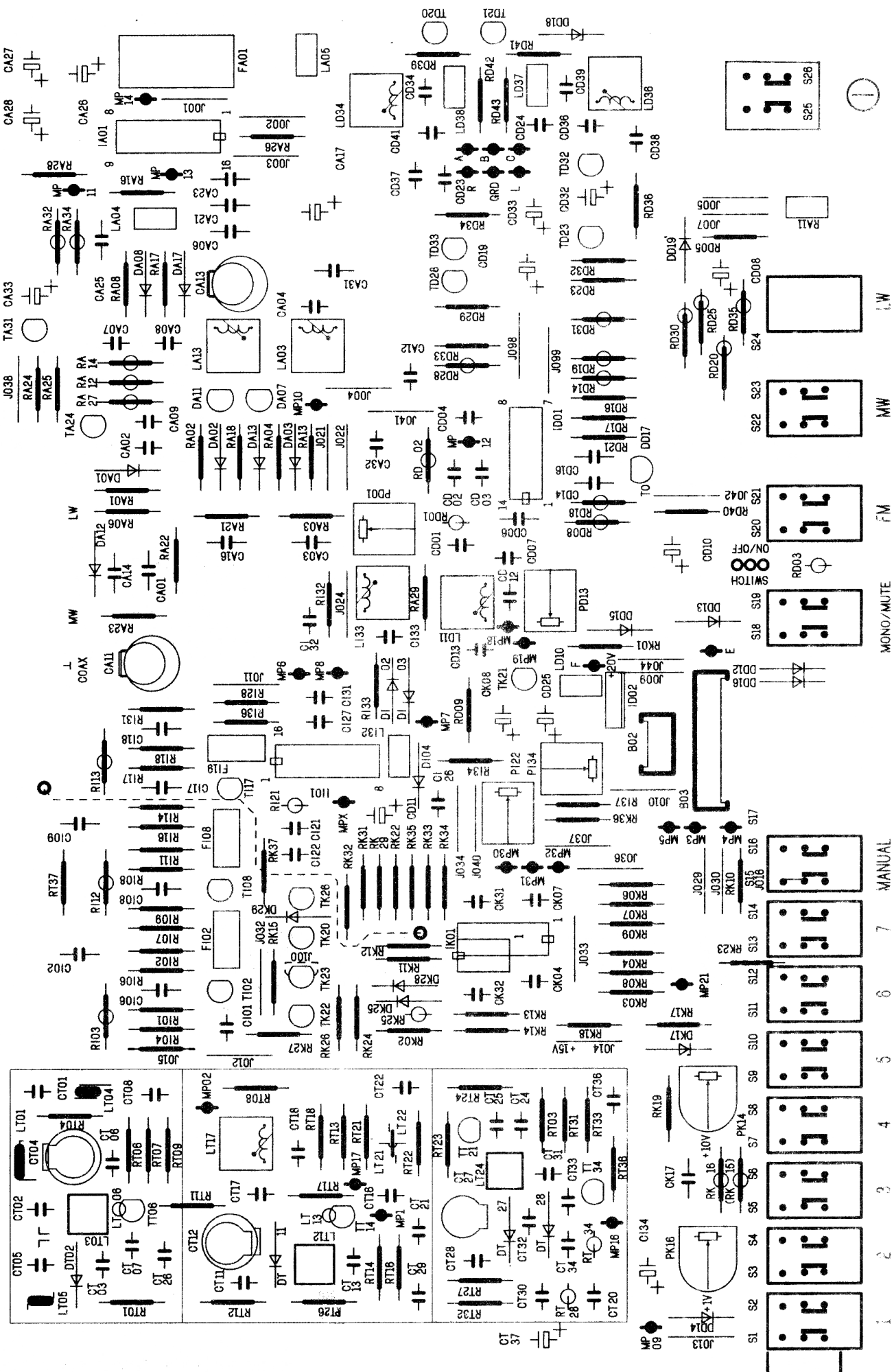


40 kΩ/V  
 Test point







1 2 3 4 5 6 7 MANUAL

MONO/MUTE

FM

MW

LW

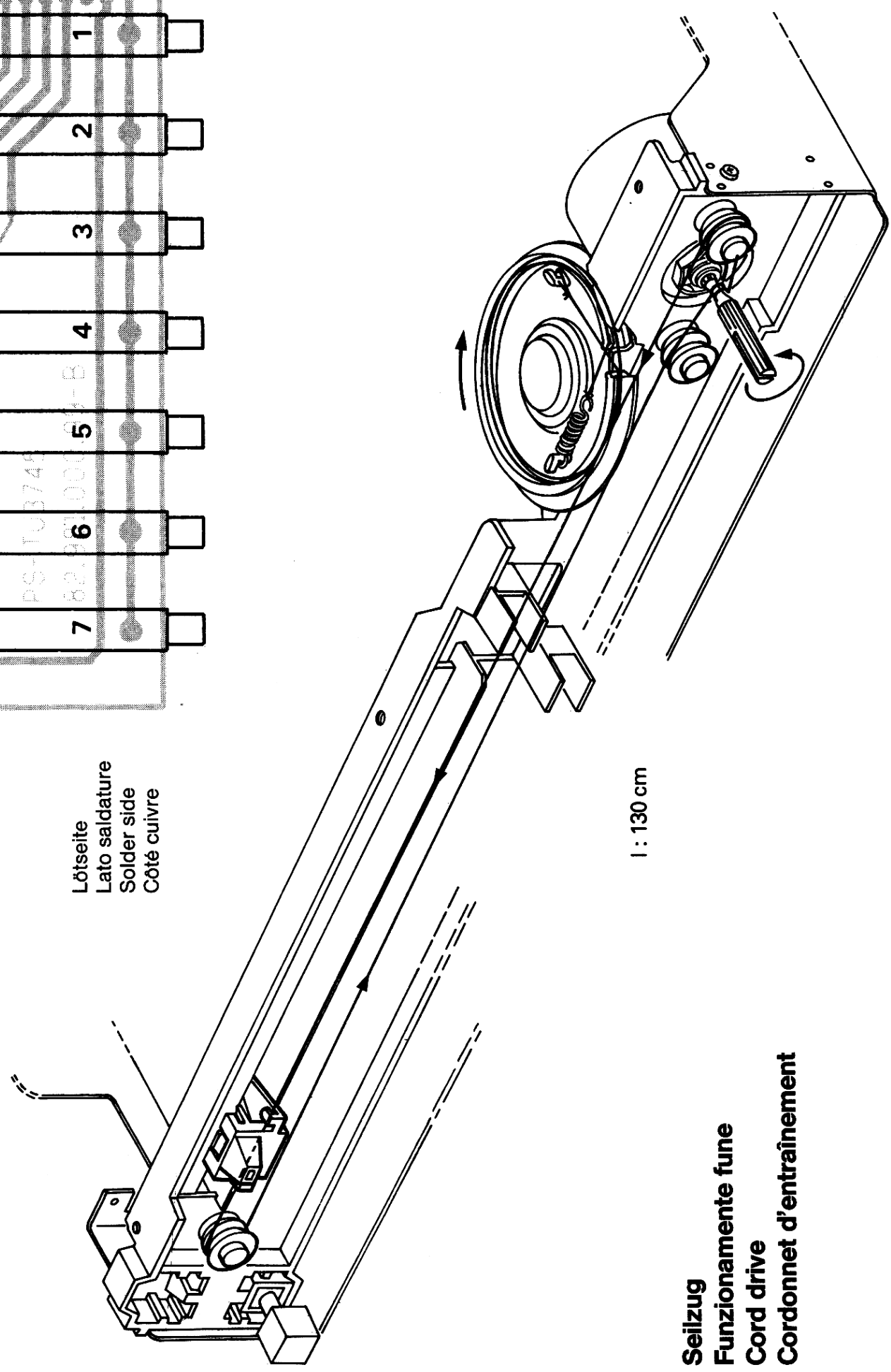
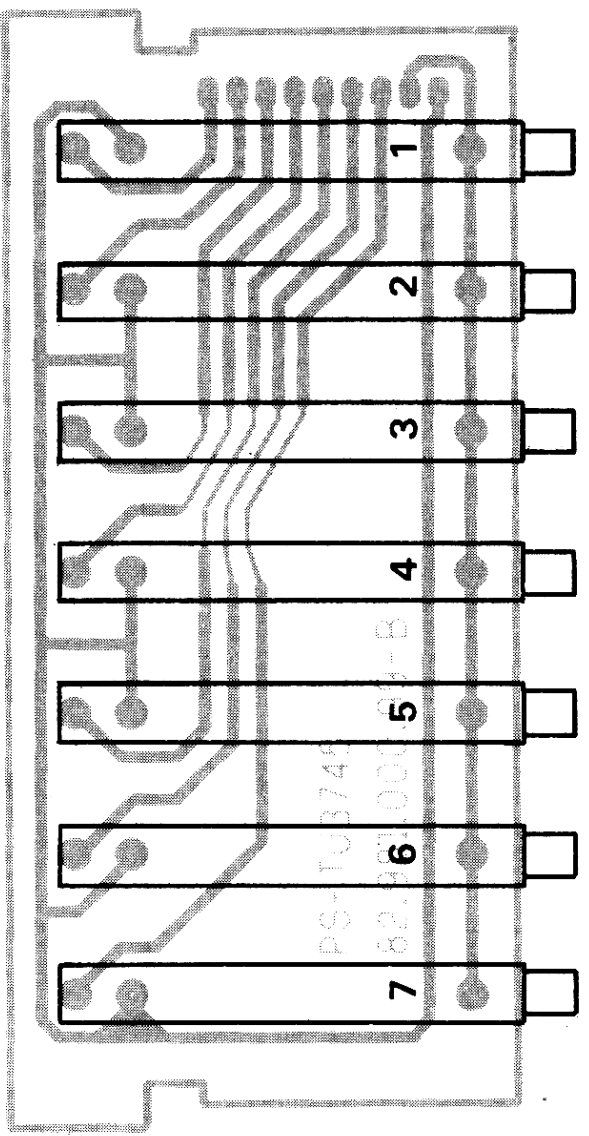
AM							
		30% mod 1000 Hz 	f				
IF FI ZF	1	14 IA 01	455 kHz		FA 01	<b>MP 14</b> Max.	
		$V_e \approx 100 \mu V$					
MW PO	2	Strap → <b>MP 4</b>	510 kHz		LA 13	<b>MP 14</b> Max.	
		$V_e \approx 100 \mu V$					
	3	Strap → <b>MP 3</b>	1630 kHz				CA 13
					600 kHz		LL
	4	$V_e \approx 10 \mu V$	600 kHz		1500 kHz		CA 11
		1500 kHz					
LW GO	6	Strap → <b>MP 4</b>	145 kHz		LA 03	<b>MP 14</b> Max.	
		$V_e \approx 100 \mu V$					
			150 kHz		150 kHz		LR
	7	$V_e \approx 10 \mu V$	150 kHz				

FM							
			f				
IF FI ZF	1		10,7 MHz		LT 17	<b>MP 7</b> 10,7 MHz	
	2				LI 33		
	$V_e \approx 100 \mu V$						
FM MF	3	$V_e \approx 1,5 \mu V$	87,5 MHz		LT 24	Max.	
	4		108 MHz		CT 27		
	5		90 MHz		90 MHz		LT 03 - LT 12
	6		101 MHz		101 MHz		CT 04 - CT 12

Decoder						
			f			
	1	$V_e \approx 1 \text{ mV stereo}$	98 MHz		PD 13	Minimum diaphonie
	2		98 MHz		98 MHz	PD 01

**Festsendereinstellung**  
**Piastra di preselezione**  
**P. C. B., Pretuning**  
**Platine présélection**

Lötseite  
Lato saldature  
Solder side  
Côté cuivre



**Seilzug**  
**Funzionamento fune**  
**Cord drive**  
**Cordonnet d'entraînement**