

SERVICE MANUAL

INTEGRATED STEREO AMPLIFIER

SANSUI AU-20000



Sansui

SANSUI ELECTRIC CO., LTD.

This service manual is designed for service engineers to repair, adjust, maintain and order the replacement parts of the AU-20000 correctly. When ordering the parts, use the stock number and parts name specifically referring to the Parts Location and Parts Lists. For general usage and maintenance of the unit, please refer to the Operating Instructions attached with the unit.

TABLE OF CONTENTS

Section	Title	Page
1.	SPECIFICATIONS	2
2.	ADJUSTMENTS	3
2-1.	Driver Circuit Board Adjustment	3
2-2.	Power Meter Adjustment	3
3.	TROUBLESHOOTING	4
3-1.	Troubleshooting Chart	4, 5
4.	PARTS LOCATION AND PARTS LIST	6
4-1.	F-2500 Input Circuit Board	6
4-2.	F-2503 Tape Copy Circuit Board	6
4-3.	F-2501 Equalizer Circuit Board	7
4-4.	F-2502 Main Volume Circuit Board	8
4-5.	F-2505 Flat Amplifier Circuit Board	8
4-6.	F-2488 Tone Control Circuit Board	9
4-7.	F-2495 Tone Amplifier Circuit Board	9
4-8.	F-2496 Meter Circuit Board	10
4-9.	F-2504 Filter Circuit Board	10
4-10.	F-2507 Driver Circuit Board	11
4-11.	F-2511 Protector Circuit Board	12
4-12.	F-2498 Filter Amplifier Circuit Board	12
4-13.	F-2508 Regulated Power Supply Circuit Board	13
4-14.	F-2510 Connector Circuit Board	13
4-15.	F-2512 Connector Circuit Board	13
4-16.	F-2497 Circuit Board for Installing Emitter Resistor	14
4-17.	F-2484 Meter Lamp Circuit Board	14
5.	FIGURES	15
5-1.	Semiconductors	15
5-2.	Connector & Pin Ass'y	15
5-3.	Power Supply Voltage changeover	15
6.	OTHER PARTS	16
6-1.	Parts List (Front Side)	16
6-2.	Other Parts List	16
7.	SCHEMATIC DIAGRAM	17
7-1.	Pre Amplifier Section	17
7-2.	Power Amplifier Section	18
8.	PACKING LIST	19
9.	ACCESSORY PARTS LIST	19

1. SPECIFICATIONS

POWER OUTPUT

Min. RMS, both channels driven, from 20 to 20,000Hz, with no more than 0.05% total harmonic distortion
 170 watts per channel into 8 ohms
 170 watts per channel into 4 ohms
 85 watts per channel into 16 ohms
 Min. RMS, both channels driven, at 1,000Hz, with no more than 0.05% total harmonic distortion
 180 watts per channel into 8 ohms
 170 watts per channel into 4 ohms

LOAD IMPEDANCE 4, 8, 16 ohms (SYSTEM A or B)
 8, 16 ohms (SYSTEM A+B)

POWER BANDWIDTH 20 to 20,000Hz at or below rated min. RMS power output and total harmonic distortion

TOTAL HARMONIC DISTORTION less than 0.05% at or below rated min. RMS power output

INTERMODULATION DISTORTION (70Hz:7kHz=4:1 SMPTE method) less than 0.05%

FREQUENCY RESPONSE (at 1 watt) 10 to 50,000Hz ± 0 dB

DAMPING FACTOR approximately 80 at 8 ohms load

INPUT SENSITIVITY AND IMPEDANCE (1kHz for rated power output)

PHONO-1 1.5, 3, 6 mV/30, 50, 100 kilo-ohms

PHONO-2 1.5, 3, 6 mV/50 kilohms (Max. input capability: 800 mV at 1 kHz, less than 0.1% total harmonic distortion and SENSITIVITY switch at 6 mV)

TUNER 130 mV/50 kilohms

AUX 130 mV/50 kilohms

TAPE-1, 2 PLAY (pin jacks) 130 mV/50 kilohms

TAPE-2 REC/PLAY (DIN socket) 130 mV

MAIN IN 700 mV/50 kilohms

OUTPUT LEVEL (1,000Hz)

TAPE-1, 2, 3 REC (pin jacks) 130 mV

TAPE-2 REC/PLAY (DIN socket) 30 mV

PRE OUT 700 mV

CHANNEL SEPARATION (1 kHz, at rated power output)

PHONO-1, 2 better than 55dB

TUNER better than 60dB

AUX better than 60dB

TAPE-1, 2, 3 PLAY better than 60dB

MAIN IN better than 65dB

HUM AND NOISE (IHF)

PHONO-1, 2 better than 70dB

TUNER better than 80dB

AUX better than 80dB

TAPE-1, 2, 3 PLAY better than 80dB

MAIN IN better than 100dB

CONTROLS

BASS ± 10 dB (30Hz)

MIDRANGE ± 5 dB (1 kHz)

TREBLE ± 10 dB (20 kHz)

LOW FILTER -3dB (20, 40 Hz), 12dB/oct.

HIGH FILTER -3dB (7 kHz), 6dB/oct.

..... -3dB (12 kHz), 12dB/oct.

MUTING 0, -10, -30dB

POWER REQUIREMENTS

POWER VOLTAGE 100, 120, 220, 240V 50/60Hz
 120V (Usable 110~130V)
 (for U.S.A. & Canada only)

POWER CONSUMPTION 360 watts (rated)

1,110 watts (max.)

DEMENSIONS 460 mm (18 1/8") W

178 mm (7 1/16") H

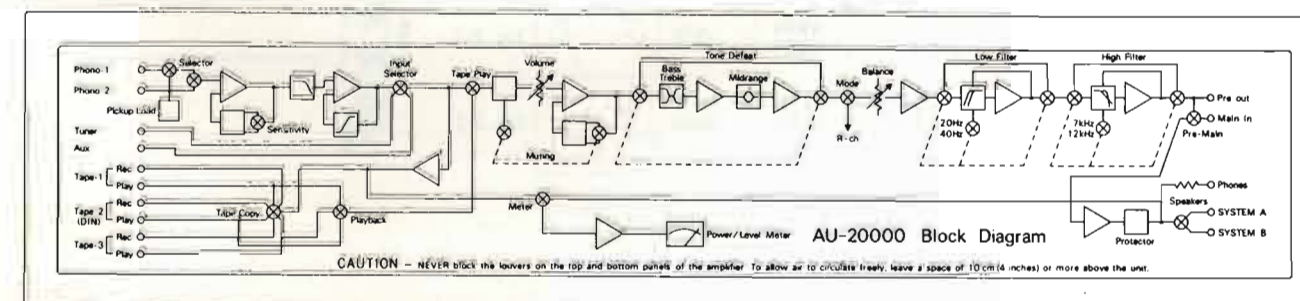
400 mm (15 3/4") D

WEIGHT 23.6 kg (52.0 lbs) net

26.4 kg (58.2 lbs) packed

* Design and specifications subject to change without notice for improvements.

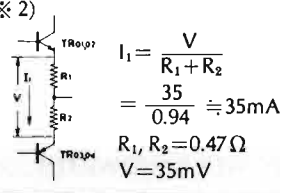
BLOCK DIAGRAM



2. ADJUSTMENTS

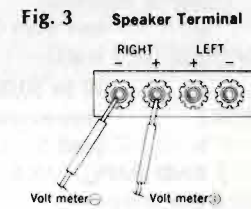
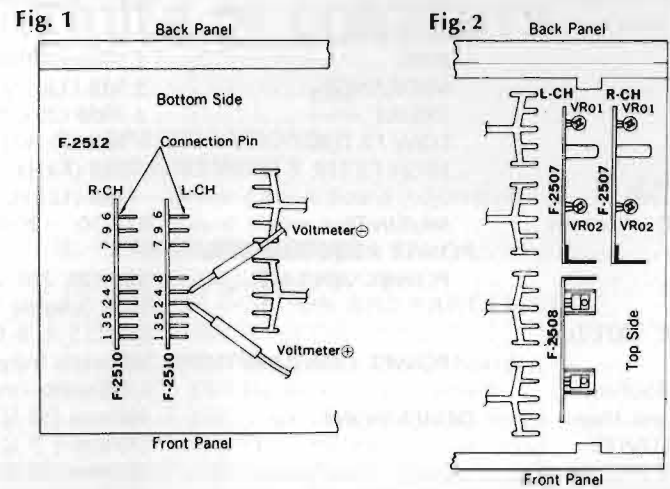
2-1. Driver Circuit Board Adjustments

- Note: 1. Master Volume.....Minimum
 2. Room Temperature.....10~35°C
 3. For adjustment, run the unit for more than 5 minutes after the power is switched on.

STEP	SUBJECT	EQUIPMENT	MEASURE OUTPUT	ADJUST	ADJUST FOR	CONDITION
1.	DC 0V	DC Volt Meter	Speaker Terminal Fig. 3	F-2507 VR01 (Fig. 2)	0V ± 10mV	VR02... Minimum (Counterclockwise) ※ 2)  $I_1 = \frac{V}{R_1 + R_2} = \frac{35}{0.94} \approx 35\text{mA}$ $R_1, R_2 = 0.47\Omega$ $V = 35\text{mV}$
2.	Bias Current	DC Volt Meter	F-2510 2-4 (Connector Pin) (Fig. 1)	F-2507 VR02 (Fig. 2)	35mV ※ 1)	



※ 1) Instead of measuring bias current, set the voltage to 35mV by VR02 between connector-pins 2 and 4 on both channels as Fig. 1, since there are no quick acting fuses in the power amplifier sections.

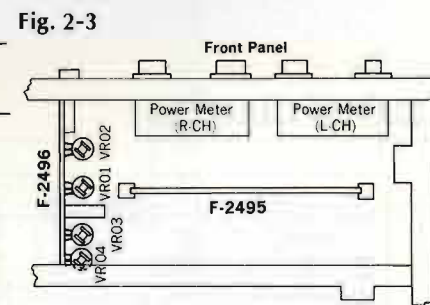
※ 2) On one channel, bias current, I_1 is current which flows into one power transistor, 25C1585. Nemaaly, total current on one channel = $I_1 \times 3$
 L-CH..... TR01, TR05, TR09
 R-CH..... TR02, TR06, TR10



2-2. Power Meter Adjustments

- Note: 1. Room Temperature.....23±5°C
 2. Speaker load.....8Ω
 3. Meter Position.....0dB
 4. Master Volume.....Max.
 5. Input.....AUX
 6. Input Signal.....Sine Curve (1kHz)
 7. For adjustment, run the unit for more than 5 minutes after the power is switched on.

STEP	SUBJECT	OUTPUT LEVEL	ADJUST	METER POSITION
1.	Power Meter Adjustment	36.9V (0dB)	F-2496 Fig. 2-3 R-CH.....VR04 L-CH.....VR03	0dB  Fig. 2-1
2.	Same as above	369mV (-40dB)	F-2496 Fig. 2-4 R-CH.....VR02 L-CH.....VR01	-40dB  Fig. 2-2



3. TROUBLESHOOTING

3-1. Troubleshooting Chart

Symptom	Cause
1. Troubles on Power Supply Section	
1-1. Voltage ±B not supplied to F-2496, F-2507	
1) Defective AC line of power section	1. AC Fuse F701 open 2. Imperfect contact of AC switch, S702 3. R01 or R02 open on F-2511 4. Inoperative inrush absorber circuit
2) ±85V, Input voltage not supplied to F-2508	5. F01 or F02 open on F-2511 6. Defective D03 or D04 on F-2511
3) ±35V not supplied to F-2496	7. Defective D01 or D02 on F-2508 8. Defective TR01, TR02 or TR05~TR11 on F-2508 9. Defective ZD01 on F-2508
4) ±65V not supplied to F-2507	10. Defective D01 or D02 on F-2508 11. Defective TR03, TR04 or TR11~TR16 12. Defective ZD02 on F-2508

2. Troubles on Power Amplifier Section

2-1. Power Amplifier inoperative	
1) AC Fuse, F701 opens	1. Power transistor shorted 2. TR01 opened on F-2497 3. TR10 or TR11 shorted on F-2507
2) AC fuse, F701 not opened (Protector lamp lighted)	4. TR08 or TR09 shorted on F-2507 5. D06 or D07 shorted on F-2507 6. TR02, TR06 or TR07 shorted on F-2507
2-2. Inproper Bias Current	7. VR01 or VR02 out of adjustment or defective on F-2507 8. TR01 shorted on F-2497

3. Troubles on Power Meter Circuit

- VR01 or VR02 out of adjustment on F-2496
- Defective IC01, IC02 on F-2496
- Defective D01~D08 on F-2496
- Defective TR01~TR04 on F-2496
- Defective Meter switch S01
- Defective Meter M701

Symptom

Cause

4. Troubles on Speaker Protector Circuit

- | | |
|---|--|
| 1) Relay, RL01 not switched OFF | 1. Defective D09~D14 on F-2511 |
| | 2. Defective TR03 or TR04 on F-2511 |
| | 3. Defective relay, RL01 |
| 2) RL01 & RL02 not switched OFF at the moment when setting power switch to ON | 4. Defective C08 on F-2511 |
| | 5. Defective TR01 or TR02 on F-2511 |
| | 6. Defective relay, RL02 |
| | 7. RL01 inoperative due to defective D17 on F-2511 |
| 3) When power transistors overheat protector relay RL01 inoperative | 8. Defective resistor PR01 on F-2509 |
| 4) Protector indicator lamp not lighted | 9. Defective TR05 on F-2511 |
| | 10. Defective LED, LD701 |

*As each voltage of speaker protector circuit floats from chassis, it can not be measured to the earth point.

5. Troubleshooting on Pre Amp. Section

*(Input Signal AUX or PHONO Input Terminal)

5-1. No signal from output terminal

- | | |
|--|---------------------------|
| 1) Inoperative Power Amp. when setting PRE-MAIN separate switch to SEPARATED (Input signal MAIN-IN Terminal) | 1. Power Amp. inoperative |
| 2) Operative Power Amp. when setting PRE-MAIN separate switch to SEPARATED (Input signal MAIN-IN Terminal) | 2. Pre Amp. inoperative |

5-2. AUX inoperative

- | | |
|---|---|
| 1) Inoperative Pre Amp. when setting Tone push switch to IN | 1. Defective Tone push switch S01 on F-2496 |
| | 2. Defective TR01~TR16 on F-2495 |
| 2) Inoperative Pre Amp. when setting Tone push switch to defeat | 3. Defective TR01~TR04 on F-2503 |
| | 4. Defective TR01~TR04 on F-2498 |
| 3) Inoperative on AUX of Input Selector switch | 5. Defective Input Selector switch, S01 on F-2502 |
| | 6. Defective TAPE PLAY switch, S02 on F-2502 |
| | 7. Defective Muting switch, S03 on F-2502 |
| | 8. Defective TR01~TR08 on F-2505 |

5-3. Filter inoperative

- | | |
|----------------------------|--|
| 1) Low filter inoperative | 1. Defective low filter switch, S02 on F-2504 |
| 2) High filter inoperative | 2. Defective high filter switch, S01 on F-2504 |

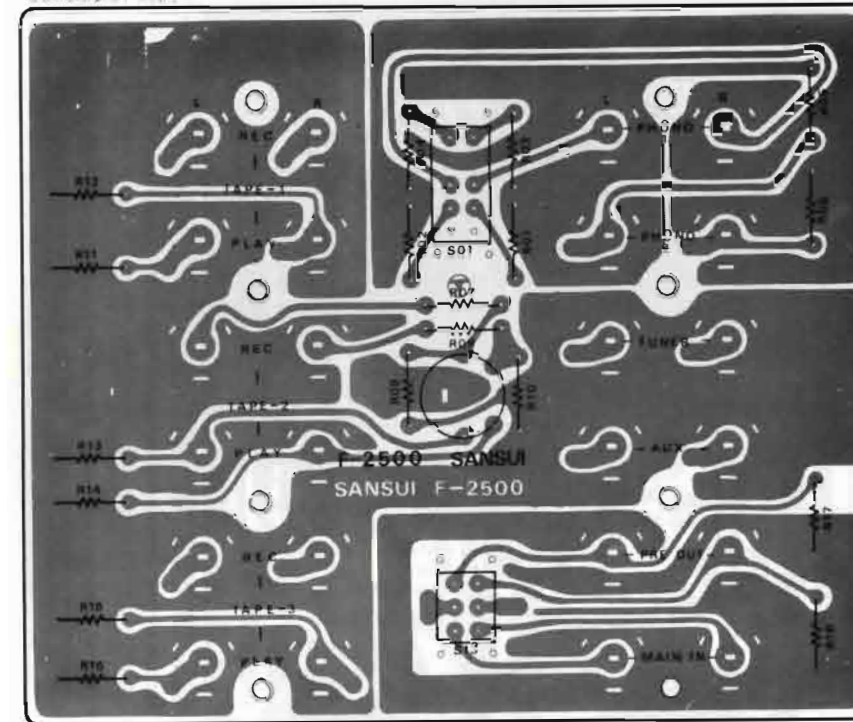
5-4. PHONO inoperative

- | | |
|--|--|
| | 1. Defective Pickup Load switch, S01 on F-2500 |
| | 2. Defective Phono switch, S703 |
| | 3. Defective TR01~TR16 on F-2501 |

4. PARTS LOCATIONS AND PARTS LISTS

4-1. F-2500 Input Circuit Board (Stock No. 7593641)

Conductor Side

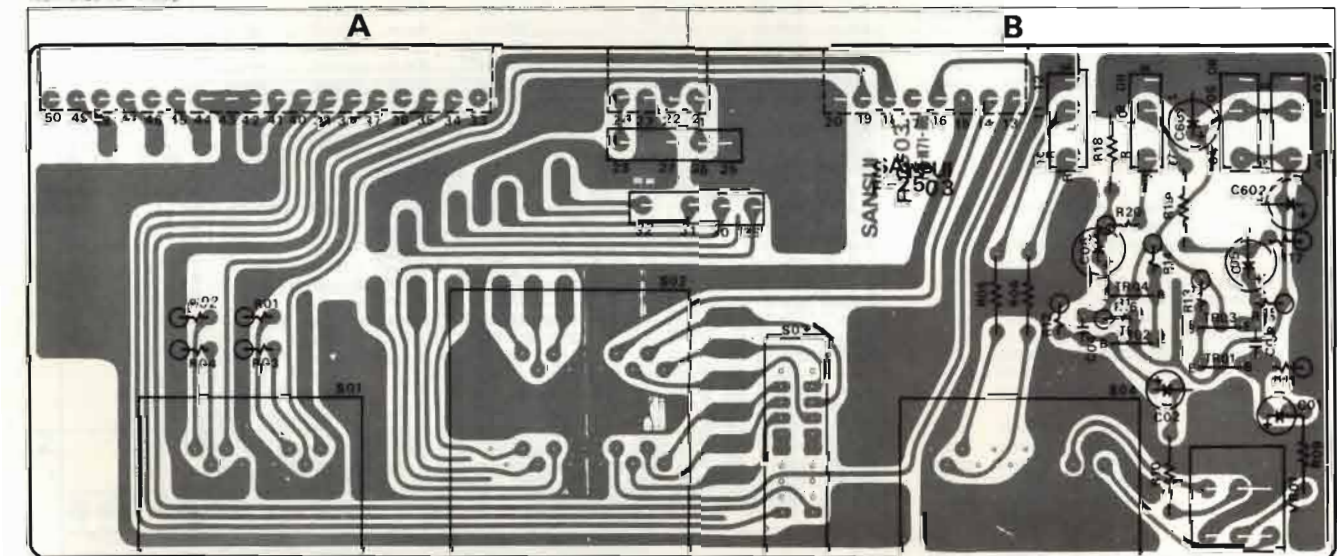


Parts List

Parts No.	Stock No.	Description
C601	0657473	47000 pF
C602	0657473	47000 pF
C603	0657473	47000 pF
C604	0657473	47000 pF
} 50V C.C.		
R01, 02	0107104	100kΩ
R03, 04	0107393	39kΩ
R05, 06	0107104	100kΩ
R07, 08	0107104	100kΩ
R09, 10	0107683	68kΩ
R11, 12	0107474	470kΩ
R13, 14	0107474	470kΩ
R15, 16	0107474	470kΩ
R17, 18	0107473	47kΩ
} 1/4W C.R.		
S01	1110290	Slide Switch
S02	1110280	Slide Switch
	2090030	SP Connector Socket
	2430260	1P (white) Jack
	2430270	1P (Red) Jack

4-2. F-2503 Tape Copy Circuit Board (Stock No. 7593661)

Conductor Side

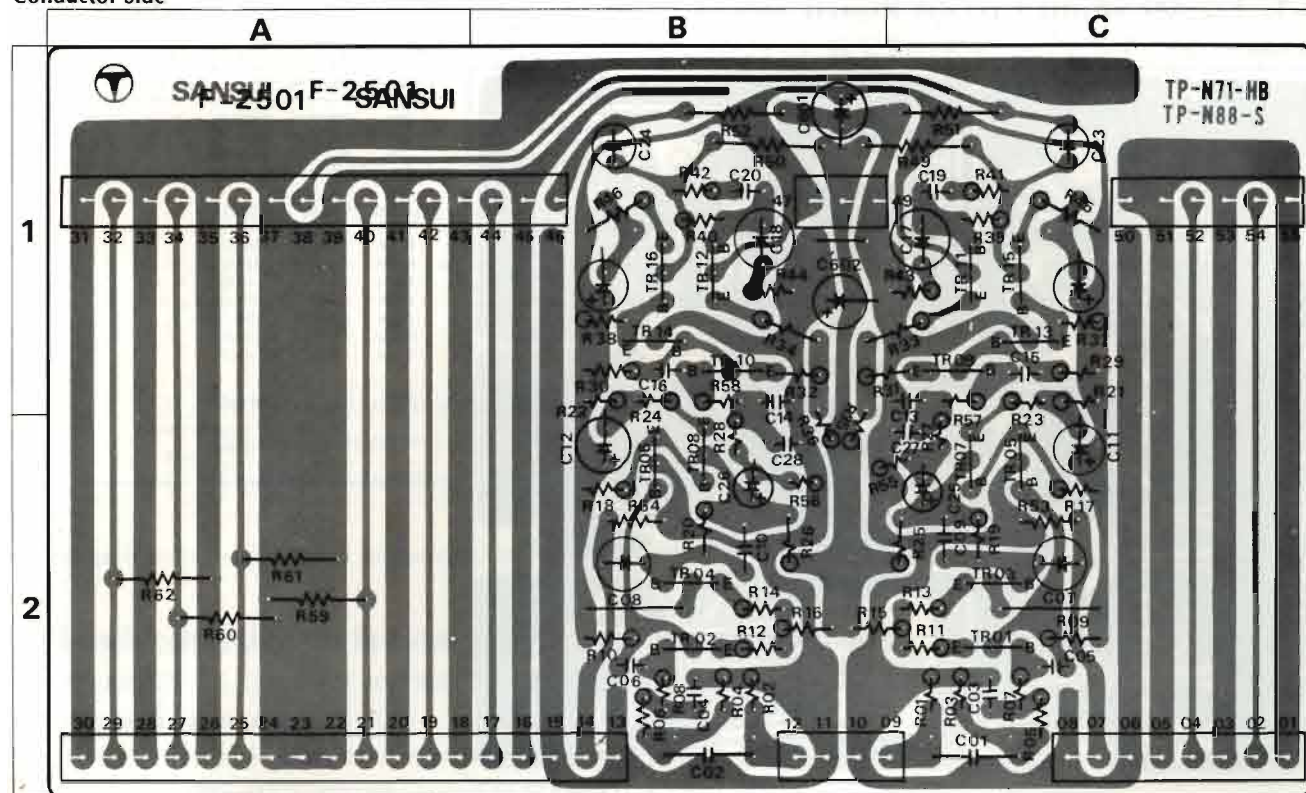


Parts List

Parts No.	Stock No.	Description	Position	Parts No.	Stock No.	Description	Position	Parts No.	Stock No.	Description	Position
TR01, 02	0300470, 1	2SA726 (F, G)	B	R03, 04	0231392	3.9kΩ	A	VR01	1015160	50kΩ (A) × 2 Variable Resistor	B
TR03, 04	0306270, 1	2SC1708 (F, G)		B	R05, 06	0107272		2.7kΩ	B	S01	1101730
C01, 02	0519102	3.3μF 50V E.C.	B	R09, 10	0107102	1kΩ	B	S02	1102670	SRA-2-4-4 Rotary Switch	A
C03, 04	0660151	150pF 50V C.C.	B	R11, 12	0106104	100kΩ	B	S03	1170960	SLS Lever Switch	B
C05, 06	0519106	4.7μF 60V	B	R13, 14	0106274	270kΩ	B	S04	1101720	SRA-1-2-5 Rotary Switch	B
C601	0515100	10μF	B	R15, 16	0106183	18kΩ	B		2410580	3P (D Type) Pin Ass'y	B
C602	0515100	10μF	B	R17	0106104	100kΩ	B				
				R18	0107104	100kΩ	B				
				R19	0107561	560Ω	B				
R01, 02	0231822	8.2kΩ	A	R20	0106561	560Ω	B				

4-3. F-2501 Equalizer Circuit Board (Stock No. 7550801)

Conductor Side



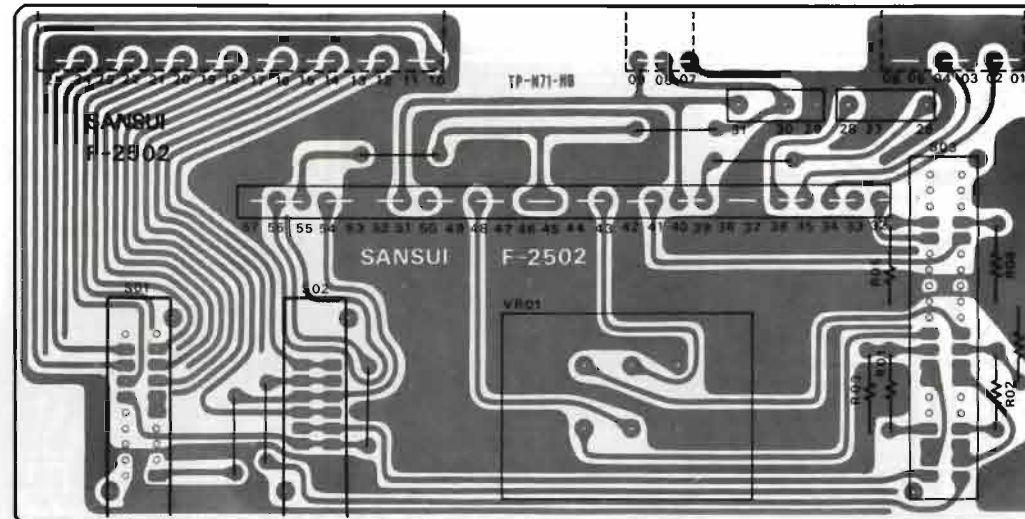
Parts List

Parts No.	Stock No.	Description	Position	Parts No.	Stock No.	Description	Position	Parts No.	Stock No.	Description	Position
TR01	0306071	2SC1313 (G)	2C	C01.02	0600228	0.22μF 50V M.C.	2C.2B	R23.24	0106391	390Ω	1C.1B
	0306072	2SC1313 (H)			C03.04	0660330	33pF	2C.2B	R25.26	0106183	18kΩ
TR02	0306071	2SC1313 (G)	2B	C05.06	0660100	10pF	2C.2B	R27.28	0231153	15kΩ	2C.2B
	0306072	2SC1313 (H)			C07.08	0530470	47μF 6.3V E.C.	2C.2B	R29.30	0231823	82kΩ
TR03	0306071	2SC1313 (G)	2C	C09.10	0660100	10pF	2C.2B	R31.32	0106681	680Ω	1B. C. 1B
	0306072	2SC1313 (H)			C11.12	0510470	47μF 6.3V E.C.	2C.2B	R33.34	0106681	680Ω
TR04	0306071	2SC1313 (G)	2B	C13.14	0630476	0.0047μF 50V P.C.	1C.1B	R35.36	0231334	330kΩ	1C.1B
	0306072	2SC1313 (H)			C15.16	0660330	33pF 50V C.C.	1C.1B	R37.38	0106223	22kΩ
TR05.06	0300470.1	2SA726 (F, G)	2C.2B	C17.18	0530470	47μF 6.3V E.C.	1C.1B	R39.40	0231684	680kΩ	1C.1B
TR07.08	0300470.1	2SA726 (F, G)			C19.20	0630476	0.0047μF 50V P.C.	1C.1B	R41.42	0231563	56kΩ
TR09	0306071	2SC1313 (G)	1C	C21.24	0533339	3.3μF	2C.2B	R43.44	0231123	12kΩ	1C.1B
	0306072	2SC1313 (H)			C25.24	0533339	3.3μF	2C.2B	R45.44	0106101	100Ω
TR10	0306071	2SC1313 (G)	1B	C27.28	0620221	220pF 50V P.C.	2C.2B	R49.50	0231472	4.7kΩ	1C.1B
	0306072	2SC1313 (H)			C401	0515100	10μF	1B	R51.52	0107473	47kΩ
TR11	0306071	2SC1313 (G)	1C	C602	0515100	10μF	1B	R53.54	0231103	10kΩ	2C.2B
	0306072	2SC1313 (H)			C901.902	0519105	2.2μF	1B	R55.56	0106224	220kΩ
TR12	0306071	2SC1313 (G)	1B	R01.02	0106224	220kΩ	2C.2B	R57.58	0106332	3.3kΩ	1C.1B
	0306072	2SC1313 (H)			R03.04	0106224	220kΩ	2C.2B	R59.60	0107474	470kΩ
TR13.14	0300470	2SA726 (F, G)	1C.1B	R05.06	0106222	2.2kΩ	2C.2B	Rel.62	0107474	470kΩ	2A
TR15.16	0300760.1	2SA917 (1, 2)			R07.08	0106102	1kΩ	2C.2B			
				R09.10	0231823	82kΩ	2C.2B				
				R11.12	0106681	680Ω	2C.2B				
				R13.14	0106681	680Ω	2C.2B				
				R15.16	0231334	330kΩ	2B. C. 2B				
				R17.18	0106223	22kΩ	2C.2B				
				R19.20	0231333	33kΩ	2C.2B				
				R21.22	0106561	560Ω	1C.1B				

※ Same rank transistors should be used in TR01, TR02, TR03, TR04, TR09, TR10, TR11 and TR12.
For example, in case that 2SC1313 (G) is used in TR01, TR02, use 2SC1313 (G) in TR03, TR04.

4-4. F-2502 Main Volume Circuit Board (Stock No. 7593651)

Conductor Side

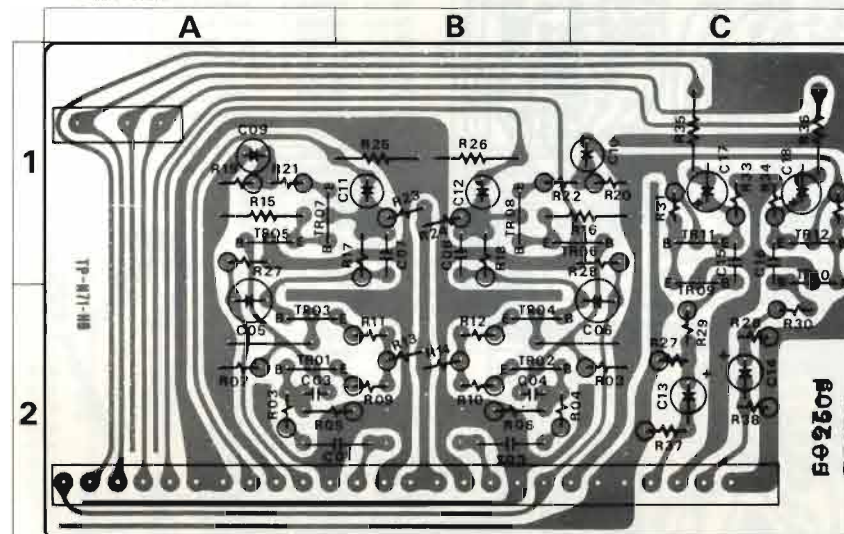


Parts List

Parts No.	Stock No.	Description	Parts No.	Stock No.	Description	Parts No.	Stock No.	Description
TR01.02	0300470.1	2SA726 (F, G)	R03.04	0107103	10kΩ	S02	1170880	Lever Switch
TR03.04	0306360.1	2SC1951 (1, 2)	R05.06	0107123	12kΩ	S03	1170990	Lever Switch
C01.02	0515109	1μF 50V E.C.	R07.08	0106184	180kΩ		2410580	3P (D Type) Pin Ass'y
C03.04	0660151	150pF 50V C.C.	R09.10	0106274	270kΩ		2410720	4P (A Type) Pin Ass'y
C05.06	0513479	4.7μF 25V E.C.	R11.12	0106183	18kΩ		2420270	3P (A Type) Connector
C401	0515100	10μF	R13.14	0107561	560Ω		2420290	6P (A Type) Connector
C602	0515100	10μF	VR01	1090180	Volume		2410880	10P (B Type) Pin Ass'y
R01.02	0107823	82kΩ 1/2W C.R.	S01	1170950	Lever Switch		2420300	8P (A Type) Connector
								10P (B Type) Connector

4-5. F-2505 Flat Amplifier Circuit Board (Stock No. 7593681)

Conductor Side

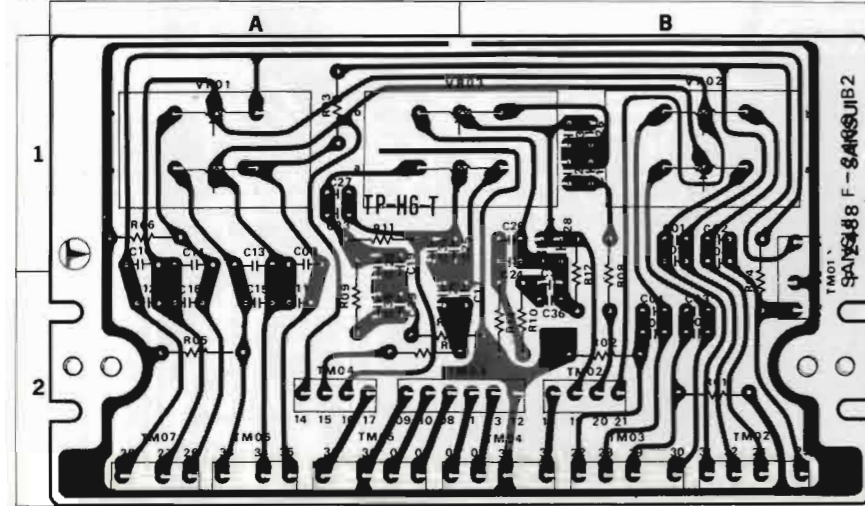


Parts List

Parts No.	Stock No.	Description	Position
TR01.02	0306071.2	2SC1313 (G, H)	2A.2B
TR03.04	0306071.2	2SC1313 (G, H)	2A.2B
TR05.06	0300470.1	2SA726 (F, G)	1A.1B.C
TR07.08	0300470.1	2SA726 (F, G)	1A.1B
TR09.10	0300470.1	2SA726 (F, G)	1C
TR11.12	0306360.1	2SC1951-1 (1, 2)	1C
C01.02	0600228	0.22μF 50V M.C.	2A.8.2B
C03.04	0660100	10pF 50V C.C.	2A.2B
C05.06	0530470	47μF 6.3V E.C.	1.2A.1.2C
C07.08	0660100	10pF 50V C.C.	1B
C09.10	0510470	47μF 6.3V E.C.	1A.1C
C11.12	0533100	10μF 25V E.C.	1B
C13.14	0515109	1μF 50V E.C.	2C
C15.16	0660151	150pF 50V C.C.	1C
C17.18	0513479	4.7μF 25V E.C.	1C
C401	0515100	10μF	50V E.C.
C602	0515100	10μF	50V E.C.
R03.04	0106222	2.2kΩ	2A.2B
R05.06	0106274	270kΩ	2A.8.2B
R07.08	0106823	82kΩ	2A
R09.10	0106681	680Ω	2B
R11.12	0106681	680Ω	2B
R13.14	0106334	330kΩ	1C
R15.16	0107223	22kΩ	1A.1B.C
R17.18	0106683	68kΩ	1B
R19.20	0106561	560Ω	1C
R21.22	0106391	390Ω	1A.1B.C
R23.24	0106183	18kΩ	1B
R25.26	0107104	100kΩ	1A.8.1B
R27.28	0106473	47kΩ	1A.2C
R29.30	0106472	4.7kΩ	2A
R31.32	0106333	33kΩ	1C
R33.34	0103472	4.7kΩ	1C
R35.36	0107561	560Ω	1C
R37.38	0106474	470kΩ	1C
R39.40	0106474	470kΩ	2C
	2420280	4P (A Type)	Connector
	2420310	10P (A Type)	
	2410580	3P (D Type)	Pin Ass'y

4-6. F-2488 Tone Control Circuit Board (Stock No. 7561291)

Conductor Side

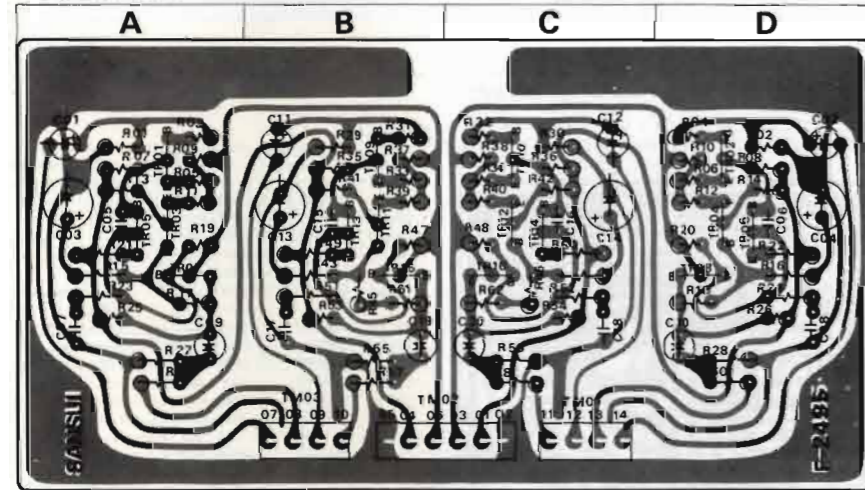


Parts List

Parts No.	Stock No.	Description	Position
C01.02	0600396	0.0039µF	1B
C03.04	0600157	0.015µF	2B
C05.06	0600106	0.001µF	1B
C07.08	0400226	0.0022µF	2B
C09.10	0600477	0.047µF	1A
C11.12	0400156	0.0015µF	2A
C13.14	0600158	0.15µF	50V M.C.
C15.16	0600227	0.022µF	2A
C17.18	0600157	0.015µF	2B, 1B
C19.20	0600277	0.027µF	1, 2A, 1B
C25.26	0600566	0.0056µF	1A, 1B
C27.28	0600157	0.015µF	1A, 1B
C29.30	0600566	0.0056µF	2A, 2B
R01.02	0107561	560Ω	2B
R03.04	0107822	8.2kΩ	1A, 1, 2B
R05.06	0107272	2.7kΩ	2A, 1A
R07.08	0107822	8.2kΩ	2A, 1, 2B
R09.10	0107563	56kΩ	1, 2A, 2B
R11.12	0107223	22kΩ	1A, 1, 2A
R13.14	0107392	3.9kΩ	2A, B, 2B
VR01	1090090.1	50kΩ X2	1A
VR02	1090110.1	50kΩ X2	Variable Resistor
VR03	1090100.1	50kΩ X2	1A, B
	2410580	3P (D Type)	Pin Ass'y
	2410590	4P (D Type)	
	2410720	4P (A Type)	
	2410860	6P (B Type)	

4-7. F-2495 Tone Amplifier Circuit Board (Stock No. 7561301)

Conductor Side

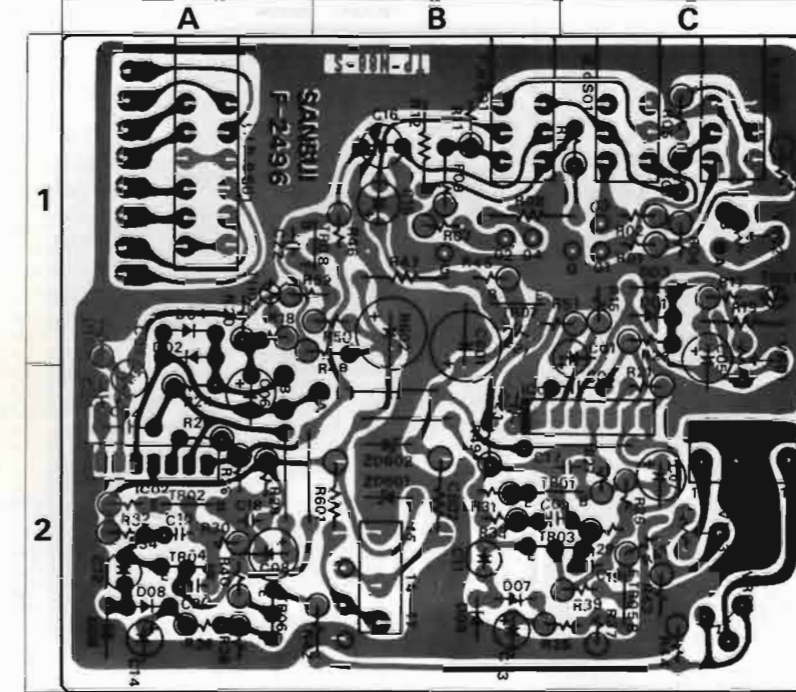


Parts List

Parts No.	Stock No.	Description	Position
TR01.02	0300470.1	2SA726 (F, G)	A, D
TR03.04	0300470.1	2SA726 (F, G)	A, D
TR05.06	0306270.1	2SC1708 (F, G)	A, D
TR07.08	0306270.1	2SC1708 (F, G)	A, D
TR09.10	0300470.1	2SA726 (F, G)	B, C
TR11.12	0300470.1	2SA726 (F, G)	B, C
TR13.14	0306270.1	2SC1708 (F, G)	B, C
TR15.16	0306270.1	2SC1708 (F, G)	B, C
C01.02	0519101	1µF 50V E.C.	A, D
C03.04	0510470	47µF 6.3V E.C.	A, D
C05.06	0640100	10µF 50V C.C.	A, D
C09.10	0533479	4.7µF 25V E.C.	A, D
C11.12	0519101	1µF 50V E.C.	B, C
C13.14	0510470	47µF 6.3V E.C.	B, C
C15.16	0660100	10µF 50V C.C.	B, C
C19.20	0533479	4.7µF 25V E.C.	B, C
R01.02	0106224	220kΩ	A, D
R03.04	0106102	1kΩ	A, D
R05.06	0106101	100kΩ	A, D
R07.08	0106103	10kΩ	A, D
R09.10	0106154	150kΩ	A, D
R11.12	0106101	100kΩ	A, D
R13.14	0106103	10kΩ	A, D
R15.16	0106472	4.7kΩ	A, D
R17.18	0106153	15kΩ	A, D
R19.20	0106683	68kΩ	A, D
R21.22	0106182	1.8kΩ	A, D
R25.26	0106183	1.8kΩ	A, D
R27.28	0106104	100kΩ	A, D
R29.30	0106105	1MΩ	B, C
R31.32	0106102	1kΩ	B, C
R33.34	0106101	100kΩ	B, C
R35.36	0106103	10kΩ	B, C
R37.38	0106154	150kΩ	B, C
R39.40	0106101	100kΩ	B, C
R41.42	0106103	10kΩ	B, C
R43.44	0106472	4.7kΩ	B, C
R45.46	0106222	2.2kΩ	B, C
R47.48	0106683	68kΩ	B, C
R49.50	0106182	1.8kΩ	B, C
R53.54	0106183	1.8kΩ	B, C
R55.56	0106104	100kΩ	B, C
R57.58	0106561	560kΩ	B, C
R59.60	0106561	560kΩ	A, D
R61.62	0106103	10kΩ	B, C
	2420280	4P (A Type)	Connector
	2420290	6P (A Type)	

4-8. F-2496 Meter Circuit Board (Stock No. 7593621)

Conductor Side



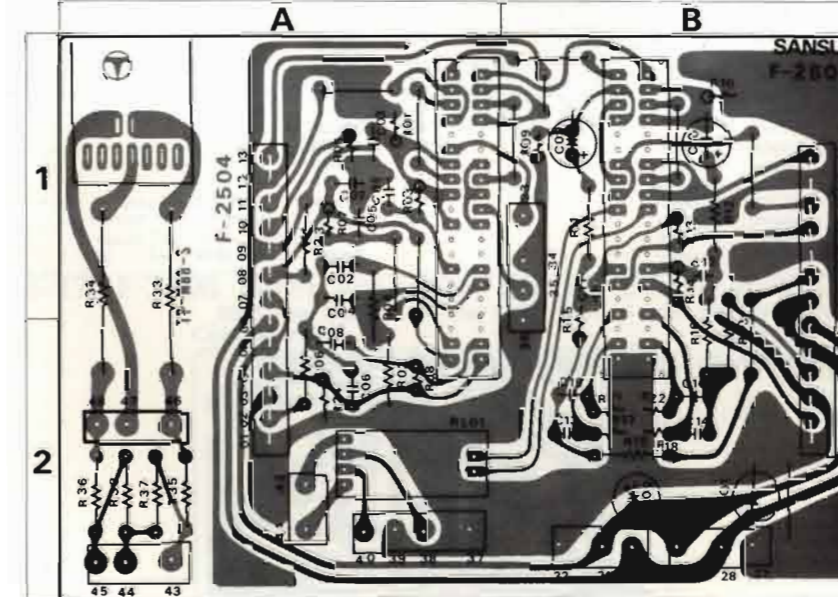
Parts List

Parts No.	Stock No.	Description	Position	Parts No.	Stock No.	Description	Position	
TR01.02	0305951-3	2SC945 (G, P, K)	2B, C, 2A	IC01.02	0360280	TA-7136PIC	2B, C, 2A	
TR03.04	0305951-3	2SC945 (G, P, K)	2B, C, 2A	Dev. 02	0340130	MV135A	1, C, 1A	
TR04.06	0306071	2SC1313 (G)	Transistor	Dev. 04	0340130	MV135A	1, C, 1A	
	or	or		Dev. 06	0311160	152473D	Diode	2B, 2A
	0306091	2SC1312 (G)	1B	Dev. 08	0311160	152473D	Diode	2B, 2A
TR07.08	0106071.2	2SC1313R (G, H)		ZD01.02	0316330	RD-1SE (B)	Zener Diode	2B

Parts No.	Stock No.	Description	Position
TH01.02	0320030	31D27 Thermistor	1, C, 1A
C01.02	0515109	1µF 50V E.C.	1B, C, 1, 2A
C03.04	0640330	33µF 50V C.C.	2, C, 2A
C05.06	0511470	47µF 10V E.C.	1, 2, C, 2A
C09.10	0660151	150µF 50V C.C.	2B, C, 2A
C11.12	0535109	1µF 50V E.C.	2B, 2A
C13.14	0573688	0.68µF 35WV T.C.	2B, 2A
C15.16	0515109	1µF 50V E.C.	1B
C23.24	0640330	33µF 50V C.C.	2B, 2A
C601.602	0513100	10µF 25V E.C.	1, 2B, 2B
C901.902	0640330	33µF 50V C.C.	
R01.02	0107104	100kΩ	1, C
R03.04	0106122	1.2kΩ	1, C
R05.06	0106183	1.8kΩ	1, C
R09.10	0106822	8.2kΩ	1B, 1, C
R11.12	0106101	100kΩ	1B
R15.16	0106154	150kΩ	1, C, 1A
R17.18	0106121	120kΩ	1, C, 1A
R19	0107222	2.2kΩ	1, C
R20	0106222	2.2kΩ	1A
R21.22	0106104	100kΩ	2, C, 2A
R23.24	0106100	10Ω	1, C, 2A
R25.26	0106474	470kΩ	2, C, 2A
R27.28	0106563	56kΩ	2, C, 2A
R29.30	0106183	1.8kΩ	1/2W C.R.
R31.32	0106332	3.3kΩ	
R33.34	0106392	3.9kΩ	2B, 2A
R35.36	0106684	680kΩ	2B, C, 2A
R37.38	0106274	270kΩ	2, C, 2A
R39.40	0106182	1.8kΩ	2, C, 2A
R41.42	0106101	100kΩ	2, C, 2A, B
R43.44	0106272	2.7kΩ	2, C
R45.46	0106334	330kΩ	1B
R47.48	0106474	470kΩ	1B, 1A, B
R49.50	0106682	6.8kΩ	2B, 1A, B
R51.52	0106561	560kΩ	1B, C, 1A, B
R60	0202881	680Ω	2B
R62	0202681	680Ω	1B
VR01.02	1035490	1MΩ (B)	Semi-Variable Resistor
VR03.04	1035310	1kΩ (B)	
S01	1131080	SUE62 Push Switch	1A, BC
	2410580	3P (D Type) Pin Ass'y	

4-9. F-2504 Filter Circuit Board (Stock No. 7593671)

Conductor Side

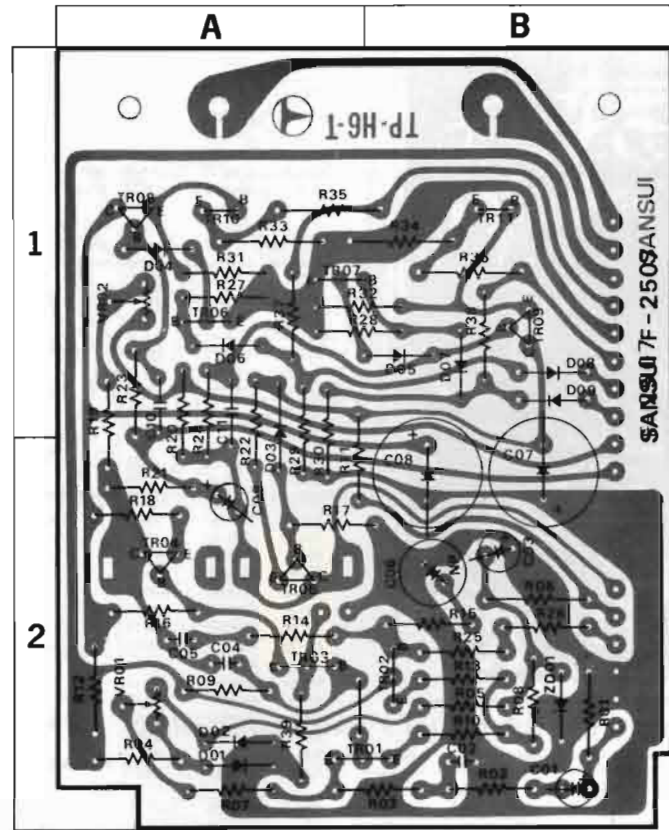


Parts List

Parts No.	Stock No.	Description	Position
C01.02	0600397	0.0039µF	1A
C03.04	0600477	0.047µF	1A
C05.06	0600397	0.0039µF	50V M.C.
C07.08	0600477	0.047µF	1A, 2A
C09.10	0519106	4.7µF	50V E.C.
C11.12	0600276	0.0027µF	1B
C13.14	0600156	0.0015µF	50V M.C.
C15.16	0600106	0.001µF	2B
C601	0515100	10µF	50V E.C.
C602	0515100	10µF	2B
R01	0106104	100kΩ	1A
R02	0107104	100kΩ	2A
R03	0106105	1MΩ	1A
R04	0107105	1MΩ	1, 2A
R05	0106683	68kΩ	1A
R06	0107683	68kΩ	2A
R07.08	0106105	1MΩ	1A, 2A
R09.10	0106104	100kΩ	1B
R11.12	0107472	4.7kΩ	1/2W C.R.
R13.14	0106105	1MΩ	1B
R15	0106123	12kΩ	1, 2B
R16	0107123	12kΩ	1, 2A
R17.18	0106105	1MΩ	2B
R19.20	0107102	1kΩ	2B, 1, 2B
R21.22	0106105	1MΩ	2B
R23	0107184	180kΩ	1A
R24	0106184	180kΩ	2B
R33.34	0135221	220Ω 5W C.e.R.	1, 2A
R35.36	0107273	27kΩ	2A
R37.38	0107102	1kΩ	2A
RL01	1150320	HA-224N 10MA 1600Ω Relay	2A
S01	1171000	Lever Switch	
S02	1171000	Lever Switch	
J01	2430240	LJ178 Jack	
	2410580	3P (D Type)	Pin Ass'y
	2410590	4P (D Type)	
	2410710	3P (A Type)	
	2410750	10P (A Type)	

4-10. F-2507 Driver Circuit Board (Stock No. 7571261)

Conductor Side



Parts List

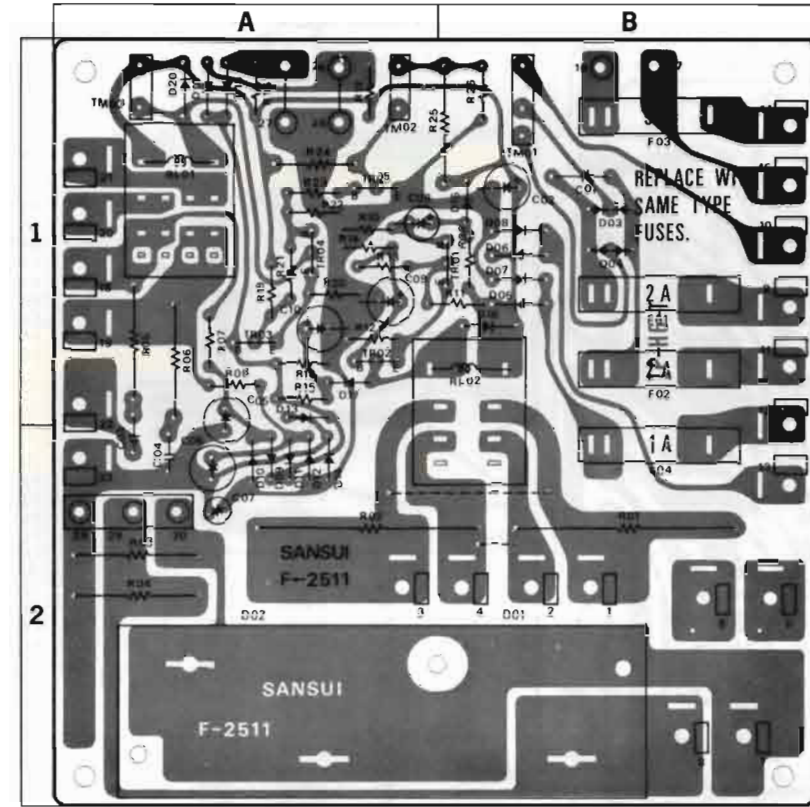
Parts No.	Stock No.	Description	Position	Parts No.	Stock No.	Description	Position
TR01	0306270.1	25C1708 (F, G)	2 A, B	TR05	0306351	25C1811-1 (2)	1 A
	or	or			or	or	
	0306290.1	25C1400 (E, V)	2 B		0306411	25C1720 (B)	1 A
	or	or			or	or	
TR02	0306270.1	25C1708 (F, G)	2 A		0306412	25C1720 (V)	1 A
	or	or			or	or	
	0306290.1	25C1400 (E, V)	2 A		0300700	25A818 (O)	1 B
	or	or			or	or	
TR03	0300710.1	25A847 (F, G)	2 A		0300701	25A818 (Y)	1 B
	or	or			or	or	
	0300700	25A818 (O)	2 A		0300770	25A896-1 (1)	1 B
	or	or			or	or	
TR04	0300701	25A818 (Y)	2 A	TR09	0300771	25A896-1 (2)	1 B
	or	or			or	or	
	0306260	25C1628 (O)	2 A		0300801	25A849 (B)	1 A
	or	or			or	or	
TR05	0306261	25C1628 (Y)	1 A		0300802	25A849 (V)	1 B
	or	or			or	or	
TR06	0305951.2	25C945 (Q, P)	1 A, B		0306250	25C1669 (R)	1 A
	or	or			or	or	
TR07	0306260	25C1628 (O)	1 A	TR10	0306251	25C1669 (O)	1 A
	or	or			or	or	
	0306261	25C1628 (Y)	1 A		0306252	25C1669 (Y)	1 B
	or	or			or	or	
	0306350	25C1811-1 (1)	1 B	TR11	0300691	25A839 (O)	1 B
	or	or			or	or	
					0300692	25A839 (Y)	

※ Same rank transistors should be used in TR01, TR02 and TR04, TR05 and TR08, TR09, TR10, TR11.
For example, in case that 25A818 (O) is used in TR04, use 25C1628 (O) in TR05.

Parts No.	Stock No.	Description	Position
D01	0311160	1S2473D	2 A
D02	0311160	1S2473D	2 A
D03	0340120	VD1212	1 A, B
D04	0311160	1S2473D	1 A
D05	0311160	1S2473D	1 B
D06	0311160	1S2473D	1 A
D07	0311160	1S2473D	1 B
D08	0311160	1S2473D	1 B
D09	0311160	1S2473D	1 B
ZD01	0316490	RD-22E (B)	2 B
	or	or	
	0316500	RD-22E (C)	
C01	0519102	3.3µF 50V E.C.	2 B
C02	0660680	68µF 50V C.C.	2 B
C03	0513330	33µF 25V E.C.	2 B
C04	0660220	22µF	2 A
C05	0660209	2µF	2 A
C06	0530101	100µF 6.3V E.C.	2 B
C07	0519903	100µF	1, 2 B
C08	0519903	80V E.C.	1, 2 B
C09	0515339	3.3µF 50V E.C.	2 A
C10	0657473	47000µF	1 A
C11	0657473	47000µF	1, 2 A
R01	0107224	220kΩ	2 B
R02	0107222	2.2kΩ	2 B
R03	0107102	1kΩ	2 A, B
R04	0107333	33kΩ	2 A
R05	0107123	12kΩ	2 B
R06	0103822	8.2kΩ	2 B
R07	0107104	100kΩ	2 A
R08	0107822	8.2kΩ	2 B
R09	0107182	1.8kΩ	2 A
R10	0107470	47Ω	2 B
R11	0107331	330Ω	1, 2 A, B
R12	0107470	47Ω	2 B
R13	0107681	680Ω	2 A
R14	0107182	1.8kΩ	2 B
R15	0107682	6.8kΩ	2 A
R16	0107333	33kΩ	2 A, B
R17	0107121	120Ω	2 A
R18	0107392	3.9kΩ	1, 2 A
R19	0107102	1kΩ	1, 2 A
R20	0107560	56Ω	2 A
R21	0107121	120Ω	1, 2 A
R22	0107391	390Ω	1 A
R23	0107391	390Ω	1, 2 A
R24	0107391	390Ω	2 B
R25	0107104	100kΩ	2 B
R26	0107821	820Ω	1 A
R27	0107122	1.2kΩ	1 A
R28	0107122	1.2kΩ	1 A, B
R29	0107103	10kΩ	1, 2 A
R30	0107103	10kΩ	1, 2 A
R31	0107222	2.2kΩ	1 A
R32	0107222	2.2kΩ	1 A, B
R33	0103470	47Ω	1 A
R34	0103470	47Ω	1 A, B
R35	0103479	4.7Ω	1 A, B
R36	0103479	4.7Ω	1 B
R37	0107331	330Ω	1 A
R38	0107331	330Ω	1 B
R39	0107103	10kΩ	2 A
R901	0107103	10kΩ	2 A
VR01	1035350	4.7kΩ (B)	Semi-Variable Resistor 2 A
VR02	1035310	1kΩ (B)	Resistor 1 A
	2420290	2145-6A 6P (A Type)	Connector
	2420310	2145-10A 10P (A Type)	Connector

4-11. F-2511 Protector Circuit Board (Stock No. 7593711)

Conductor Side



Parts List

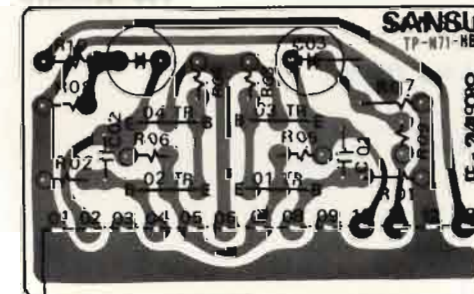
Parts No.	Stock No.	Description	Position	Parts No.	Stock No.	Description	Position
TR01	0306131-3	25C1364 (6, 7, 8)	1 B	D04	0310540	1S1850R	1 B
TR02	0306131-3	25C1364 (6, 7, 8)	1 A		or	or (S-5 Type Green)	
TR03	0306131-3	25C1364 (6, 7, 8)	1 A		0311430	CO8P-2-R	1 B
TR04	0306131-3	25C1364 (6, 7, 8)	1 A	D05	0310340	10D1 (1S2226)	
	or	or		D06	0310340	10D1 (1S2226)	1 B
	or	or		D07	0310340	10D1 (1S2226)	Diode 1 B
D01	0311440	5G6T (S)	2 B	D08	0310340	10D1 (1S2226)	1 B
D02	0311450	5G6T (R)	2 A	D09	0311160	1S2473D	2 A
	or	or		D10	0311160	1S2473D	2 A
D03	0310530	1S1850	1 B	D11	0311160	1S2473D	2 A
	or	or (S-5 Type Black)			D12	0311160	1S2473D
	0311420	CO8P-2-N					

※ Please note the followings when replacing the diode D03 and D04.
In case of using 1S1850 in D03, use 1S1850R in D04 and use CO8P-2-R against CO8P-2-N in D03.

Parts No.	Stock No.	Description	Position
D13	0311160	1S2473D	1 A
D14	0311160	1S2473D	2 A
D15	0311160	1S2473D	1 B
D16	0310340	10D1 (1S2226)	1 B
D17	0311160	1S2473D	1 A
D18	0311160	1S2473D	1 A
D19	0311160	1S2473D	1 A
D20	0310340	10D1 (1S2226)	1 A
C01	0659011	10000µF 500V C.C.	1 B
C02	0515470	47µF 50V E.C.	1 B
C03	0600108	0.1µF	1, 2 A
C04	0600108	0.1µF	2 A
C05	0530470	47µF	1, 2 A
C06	0530470	47µF	2 A
C07	0535109	1µF	2 A
C08	0519102	3.3µF	50V E.C.
C09	0510470	47µF	6.3V E.C.
C10	0515100	10µF	50V E.C.
C501-504	0659011	10000µF 500V C.C.	1 A
C505	0513100	10µF	25V E.C.
R01	0137399	3.9Ω	7W Ce.R. 2 B
R02	0137399	3.9Ω	2 A, B
R03	0202392	3.9kΩ	2 A
R04	0202392	3.9kΩ	2 A
R05	0132479	4.7Ω	1 A
R06	0132479	4.7Ω	1 A
R07	0113473	47kΩ	1 A
R08	0113473	47kΩ	1 A
R09	0113273	27kΩ	1 B
R10	0113182	1.8kΩ	1 A
R11	0113123	12kΩ	1 A, B
R12	0113100	10Ω	1 A
R13	0113100	10Ω	1 A
R14	0113104	100kΩ	1 A
R15	0113333	33kΩ	1 A
R16	0113333	33kΩ	1 A
R17	0113333	33kΩ	1 A
R18	0113104	100kΩ	1 A
R19	0113123	12kΩ	1 A
R20	0113220	22Ω	1 A
R21	0113100	10Ω	1 A
R22	0113122	1.2kΩ	1 A
R23	0103182	1.8kΩ	1/2W C.R. 1 A
R24	0103182	1.8kΩ	1/2W S.R. 1 A
R25	0113221	220Ω	1/2W S.R. 1 B
RL01	1150101	DC 19.2V 650Ω	Relay 1 A
RL02	1150310	DC 20.4V 650Ω	Relay 1, 2 B
F01	0431240	2A 250V 6.35X31.8MM	AC Fuse 1 B
F02	0431240	2A 250V 6.35X31.8MM	1 B
F03	0431280	5A 250V 6.35X31.8MM	1 B
F04	0431220	1A 250V 6.35X31.8MM	2 B
	2250170	Fasten Tab	
	2310051	Fuse Holder	
	2410580	3P (D Type)	Pin Ass'y
	2410650	2P (D Type)	

4-12. F-2498 Filter Amplifier Circuit Board (Stock No. 7593631)

Conductor Side

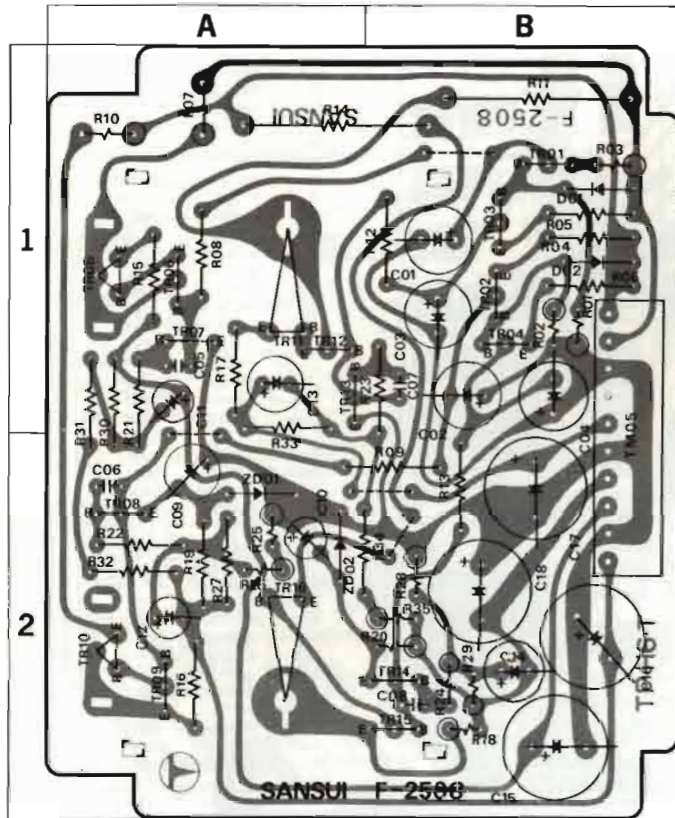


Parts List

Parts No.	Stock No.	Description
TR01, 02	0300470	25A726 (F, G)
TR03, 04	0306270	25C1708 (F, G)
		Transistor
C01, 02	0660151	150µF 50V C.C.
C03, 04	0519106	4.7µF 50V E.C.
R01, 02	0106105	1MΩ
R03, 04	0106274	270kΩ
R05, 06	0106183	18kΩ
R07, 08	0106104	100kΩ
R09, 10	0106561	560Ω
	2420270	3P (A Type)
	2420310	10P (A Type)
		Connector

4-13. F-2508 Regulated Power Supply Circuit Board (Stock No. 7501341)

Conductor Side



Parts No.	Stock No.	Description	Position
C02	0519404	10µF 100V E.C.	1B
C03	0515470	47µF 50V E.C.	1B
C04	0515470	47µF 50V E.C.	1B
C05	0660101	100µF 2A	1A
C06	0660101	100µF 2A	2A
C07	0660101	100µF 50V C.C.	1B
C08	0660101	100µF 2B	2B
C09	0512330	33µF 16V E.C.	2A
C10	0512330	33µF 2A	2A
C11	0519403	2.2µF 100V E.C.	1A
C12	0516339	3.3µF 63WV E.C.	2A
C13	0515100	10µF 50V E.C.	1A
C14	0515100	10µF 2B	2B
C15	0519904	220µF 80V E.C.	2B
C16	0519904	220µF 2B	2B
C17	0515331	330µF 50V E.C.	2B
C18	0515331	330µF 2B	2B
C705	0601477	0.047µF	
C706	0601477	0.047µF	
C707	0601477	0.047µF	
C708	0601477	0.047µF	
R01	0106473	47kΩ	1B
R02	0106473	47kΩ	1B
R03	0106122	1.2kΩ 1/2W C.R.	1B
R04	0107122	1.2kΩ 1B	1B
R05	0107561	560Ω 1B	1B
R06	0107561	560Ω 1B	1B
R07	0162151	150Ω 2W Ce.R.	1A
R08	0107822	8.2kΩ 1A	1A
R09	0107822	8.2kΩ 2A, B	2A, B
R10	0162151	150Ω 2W Ce.R.	1A
R11	0155151	150Ω 5W Ce.R.	1B
R12	0107123	12kΩ 1B	1B
R13	0107123	12kΩ 1/2W C.R.	2B
R14	0155151	150Ω 5W Ce.R.	1A, B
R15	0107100	10Ω 1A	1A
R16	0107100	10Ω 2A	2A
R17	0107100	10Ω 1A	1A
R18	0106100	10Ω 2B	2B
R19	0107223	22kΩ 2A	2A
R20	0109103	10kΩ 2B	2B
R21	0107562	5.6kΩ 1, 2A	1, 2A
R22	0107562	5.6kΩ 2A	2A
R23	0107562	5.6kΩ 1B	1B
R24	0106562	5.6kΩ 2B	2B
R25	0106123	12kΩ 1/2W C.R.	2A
R26	0106182	1.8kΩ 2A	2A
R27	0107473	47kΩ 2A	2A
R28	0106153	15kΩ 2B	2B
R29	0106183	18kΩ 2B	2B
R30	0107563	56kΩ 1, 2A	1, 2A
R31	0107102	1kΩ 1, 2A	1, 2A
R32	0107563	56kΩ 2A	2A
R33	0107333	33kΩ 1, 2A	1, 2A
R34	0107102	1kΩ 2A, B	2A, B
R35	0106333	33kΩ 2A, B	2A, B
R901	0155121	120Ω 5W Ce.R.	
R902	0155121	120Ω	
	2420310	10P (A Type) Connector	

Parts List

Parts No.	Stock No.	Description	Position	Parts No.	Stock No.	Description	Position	
TR01	0300720	2SA850 (C, D)	1B	TR13	0306071	2SC1313 (G, H)	1A	
TR02	0306280	2SC1735 (C, D)	1B	TR14	0300470	2SA726 (F, G)	2B	
TR03	0300720	2SA850 (C, D)	1B	TR15	0300720	2SA850 (C, D)	2B	
TR04	0306280	2SC1735 (C, D)	1B	TR16	0308441	2SD382 (M, L, K)	2A	
TR05	0308431	2SD381 (M, L, K)	1A					
TR06	0306280	2SC1735 (C, D)	1A	D01	0340120	VD1212	Varistor	1B
TR07	0306270	2SC1708 (F, G)	1A	D02	0340120	VD1212	Varistor	1B
TR08	0300710	2SA847 (F, G)	2A	ZD01	0316340	RD-15E (C)	Zener Diode	2A
TR09	0300720	2SA850 (C, D)	2A	ZD02	0316340	RD-15E (C)	Zener Diode	2A
TR10	0308431	2SD381 (M, L, K)	2A					
TR11	0308441	2SD382 (M, L, K)	1A	C01	0519404	10µF 100V E.C.	1B	
TR12	0306280	2SC1735 (C, D)	1A					

4-14. F-2510 Connector Circuit Board (Stock No. 7593701)

Parts List

Parts No.	Stock No.	Description
	2410760	3P (C Type) Pin Ass'y
	2410780	6P (C Type) Pin Ass'y

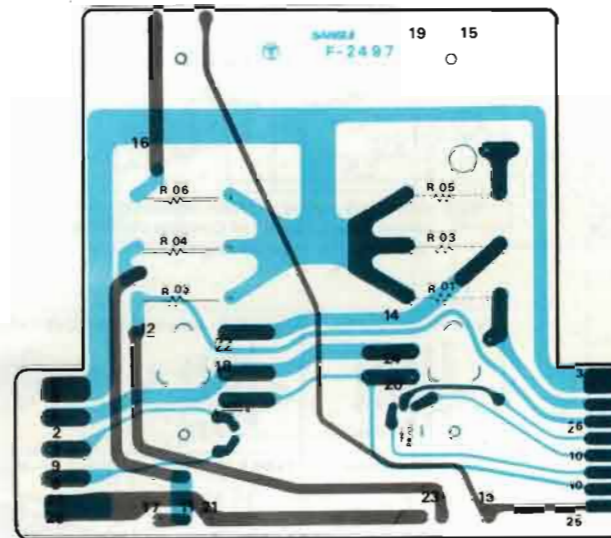
4-15. F-1512 Connector Circuit Board (Stock No. 7593721)

Parts List

Parts No.	Stock No.	Description
C01	0549401	470µF
C02	0549401	470µF
C03	0519404	10µF 100V E.C.
C04	0519404	10µF
	2410730	6P (A Type) Pin Ass'y
	2410750	10P (A Type) Pin Ass'y
	2410880	10P (B Type) Pin Ass'y
	2420320	3P (A Type) Connector
	2420340	6P (A Type) Connector

4-16. F-2497 Circuit Board for Installing Emitter Resistor (Stock No. 7593691)

Conductor Side



Parts List

Parts No.	Stock No.	Description
TR01	0306131-3	25C1364 (6, 7, 8)
PR01	0320130	Thermistor
R01	0135478	0.47Ω
R02	0135478	0.47Ω
R03	0135478	0.47Ω
R04	0135478	0.47Ω
R05	0135478	0.47Ω
R06	0135478	0.47Ω
	2250051	Fasten Tab

4-17. F-2484 Meter Lamp Circuit Board (Stock No. 7593611)

Conductor Side



Parts List

Parts No.	Stock No.	Description
PLOT	0420050	7V 300mA Fuse Type Lamp
	0420060	7V 300mA Fuse Type Lamp
	2310051	Fuse Holder

5. FIGURES

5-1. Semiconductors

SEMICONDUCTORS	COMPLETE CIRCUIT BOARD	SEMICONDUCTORS	COMPLETE CIRCUIT BOARD
2SA726 2SA847 2SA850 2SC1313 2SC1708 2SC1735	F.2508 F.2507 F.2498 F.2501 F.2495 F.2496 F.2502 F.2503 F.2505	10D-1	F-2511
2SA733 2SC1400 2SC1364 2SC945 2SC1951 2SC1811 2SA917 2SA896 2SA849	F.2497 F.2507 F.2511 F.2501 F.2502 F.2505 F.2496	VD1212 MV13SA	F-2507 F-2508 F-2496
2SD381	F-2508	1S2473	F-2511 F-2507 F-2496
2SA839 2SC1669 2SD382	F.2507 F.2508	RD-15E RD-22E	F-2508 F-2507 F-2496
2SA818 2SC1628	F-2507	SG52TR (-) SG52TS (+)	F-2511
TA7136	F-2496	1S1850 (+) 1S1850R (-)	F-2511
2SA908 2SB554 2SC1585 2SD424	POWER TRANSISTOR		
2SC1720 (6)	F-2507		

5-2. Connector & Pin Ass'y

Connector	Stock No.
Type A (3~10 pins)	2 Pins 2420250
Type B (2~6 pins)	3 Pins 2420220
	4 Pins 2420230
	5 Pins 2420210
	6 Pins 2420240

NOTE: Since stock number of female connectors (type B) with wires are not shown in each parts list of Complete circuit board, please refer to the above parts list when ordering the connector.

Pin Ass'y	Type B (3~10 pins)	Type C (3~10 pins)
Type A (3~10 pins)	Type B (3~10 pins)	Type C (3~10 pins)
Type D (2~6 pins)	Type E (2~6 pins)	Type F (2~6 pins)

Abbreviations

C.R. : Carbon Resistor	BP.E.C.: Bi-Polar Electrolytic Capacitor
S.R. : Solid Resistor	C.C. : Ceramic Capacitor
Ce.R. : Cement Resistor	Mi.C. : Mica Capacitor
M.R. : Metallized Film Resistor	O.C. : Oil Capacitor
M.C. : Mylar Capacitor	P.C. : Polystyrene Capacitor
E.C. : Electrolytic Capacitor	T.C. : Tantalum Capacitor

5-3. Power Supply Voltage changeover

*In accordance with AC line voltage in your area, input AC voltages of this unit can be easily obtained by changing connections as shown in Fig. 5-1.

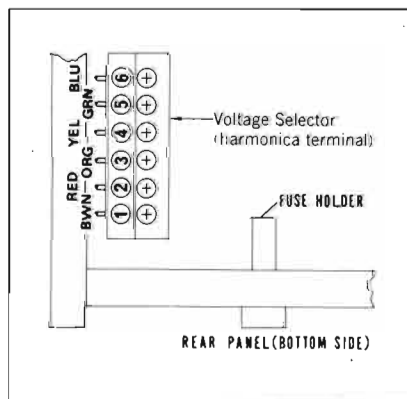
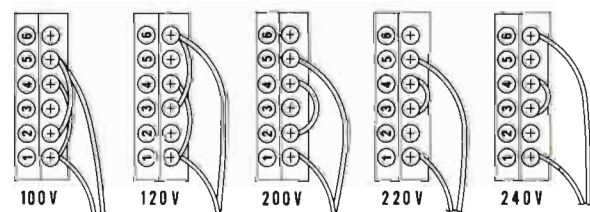


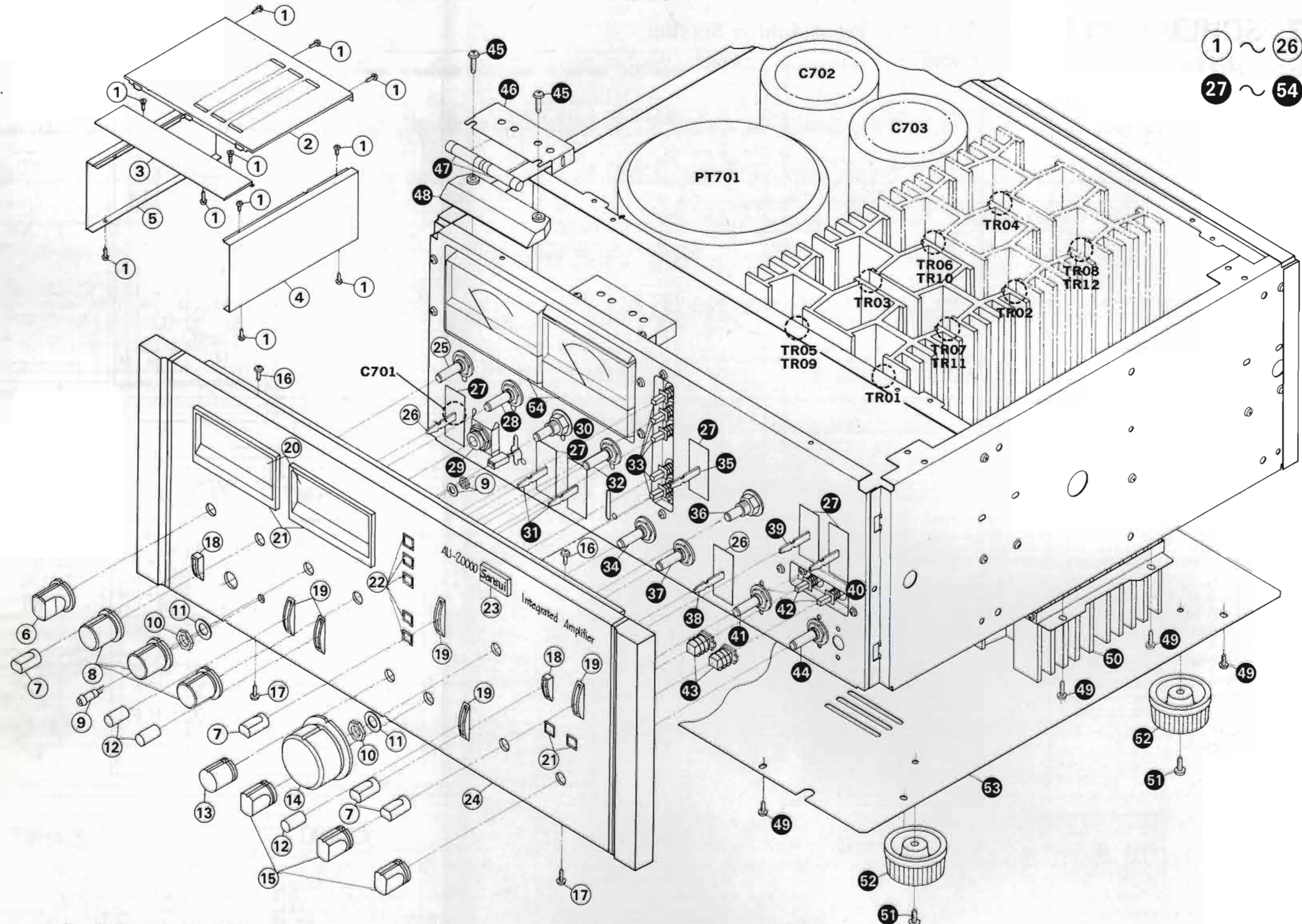
Fig. 5-1



6. OTHER PARTS

6-1. Parts List (Front Side)

Parts No.	Stock No.	Description
1	5109222	Binding Head Tapping Screw, M3 × 8
2	5006411	Metal Bonnet (2)
3	5006500	Metal Bonnet (1)
4	5309700	Side Plate (Right)
5	5309690	Side Plate (Left)
6	5318260	C-6 Type Knob, Speakers
7	5326510	E-2 Type Knob, lever switch
8	5318250	B-6 Type Knob, Triple Tone Control
9	7726080	Light Emitted Diode Ass'y (A)
10	5110781	Hex. Nut, M9
11	5120084	Plain Washer, 9φ
12	5326520	E-3 Type Knob, lever switch
13	5318270	D-6 Type Knob, Balance
14	5318230	Z-5 Type Knob, Volume
15	5318280	F-6 Type Knob, rotary volume
16	5166610	Flat Countersunk Head Screw, M3 × 6
17	5109222	Binding Head Tapping Screw, M3 × 8
18	5286731	Lever Guide (1)
19	5286741	Lever Guide (2)
20	5446250	Meter Glass
21	5309760	Meter Hood
22	5286721	Knob Guide
23	5336580	SANSUI Mark
24	7007250	Front Panel
25	1102630	Rotary Switch Y-244, Speakers
26	1170330	Lever Switch, Power
27	5047470	Masking, lever switch
28	1090090, 1	50kΩ × 2 Bass Volume
29	2430240	Headphone Jack
30	1090100, 1	50kΩ × 2 Midrange Volume
31	1171000	Lever Switch, Filters
32	1090110, 1	50kΩ × 2 Treble Volume
33	1131080	Push Switch (SUE-62)
34	1090180	100kΩ × 2 Balance Volume
35	1170090	Lever Switch, Muting
36	1015160	50kΩ × 2 Volume
37	1101720	Rotary Switch SRA-125, Mode
38	1170960	Lever Switch, Tape Playback
39	1170880	Lever Switch, Tape Play
40	1170950	Lever Switch, Input Selector
41	1102670	Rotary Switch SRA-244, Tape Copy
42	1131070	Push Switch (SUE24)
43	5326530	Push Switch Knob
44	1101730	Rotary Switch SRA-123, Sensitivity
45	5101147	Binding Head Screw, M3 × 14
46	5286780	Illumination Cover
47	0420050	7V 300mA Fuse Type Lamp
48	5446240	Illumination Plate
49	5109222	Binding Head Tapping Screw, M3 × 8
50	5937151	Heat Sink
51	5101163	Binding Head Screw, M4 × 10
52	5517050	Leg
53	5058382	Bottom Plate
54	4300910	Power Meter



1 ~ 26
27 ~ 54

6-2. Other Parts List

Parts No.	Stock No.	Description
TR01, 02	0306310-3 or 0308470.1	25C1585 (R, O, Y) 25D424 (R, O)
TR03, 04	0300730-2 or 0303300	25A908 (R, O, Y) 25B554 (R, O)
TR05, 06	0306310-3 or 0308470.1	25C1585 (R, O, Y) 25D424 (R, O)
TR07, 08	0300730-2 or 0303300	25A908 (R, O, Y) 25B554 (R, O)

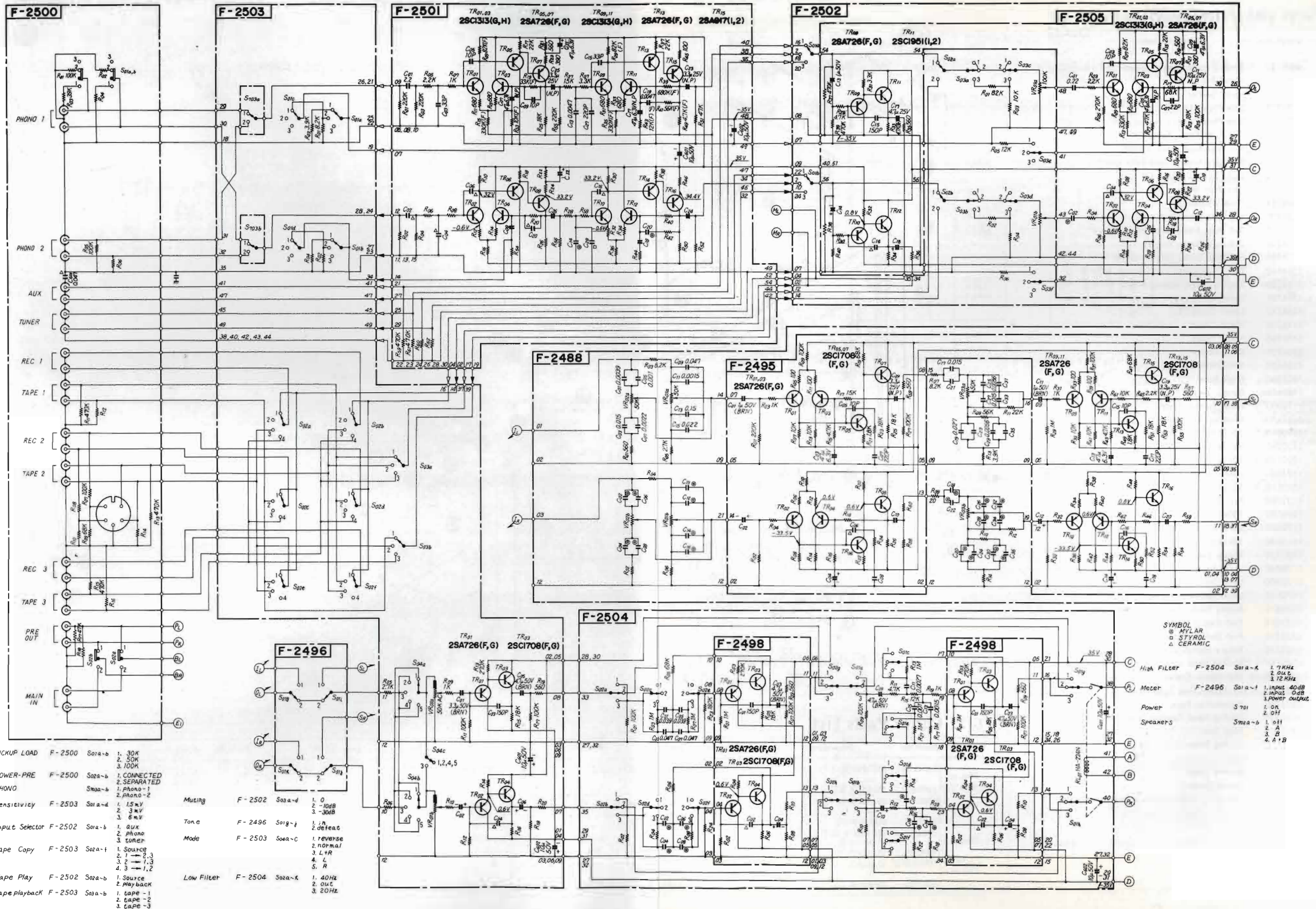
Parts No.	Stock No.	Description
TR09, 10	0306310-3 or 0308470.1	25C1585 (R, O, Y) 25D424 (R, O)
TR11, 12	0300730-2 or 0303300	25A908 (R, O, Y) 25B554 (R, O)
C701	0659801	0.01μF 150V C.C.
C702	0559842	22000μF 80V E.C.
C703	0559842	22000μF 80V E.C.
C705	0601477	0.047μF 50V C.C.

Parts No.	Stock No.	Description
C706	0601477	0.047μF
C707	0601477	0.047μF 50V C.C.
C708	0601477	0.047μF
R701	0104100	10Ω
R702	0104100	10Ω
R703	0104100	10Ω
R704	0104100	10Ω
PT701	4002400	Power Transformer

Parts No.	Stock No.	Description
F701	0431320 or 0431390	10A 250V (AC 100~120V) 6A 250V (AC 220~240V) AC Fuse
	2230051	Ground Terminal
	2300060	Fuse Holder
	2450060	AC Outlet
	3800250	Power Cord
	3910190	Cord Clip, power cord
	2210280	4P Speaker Terminal

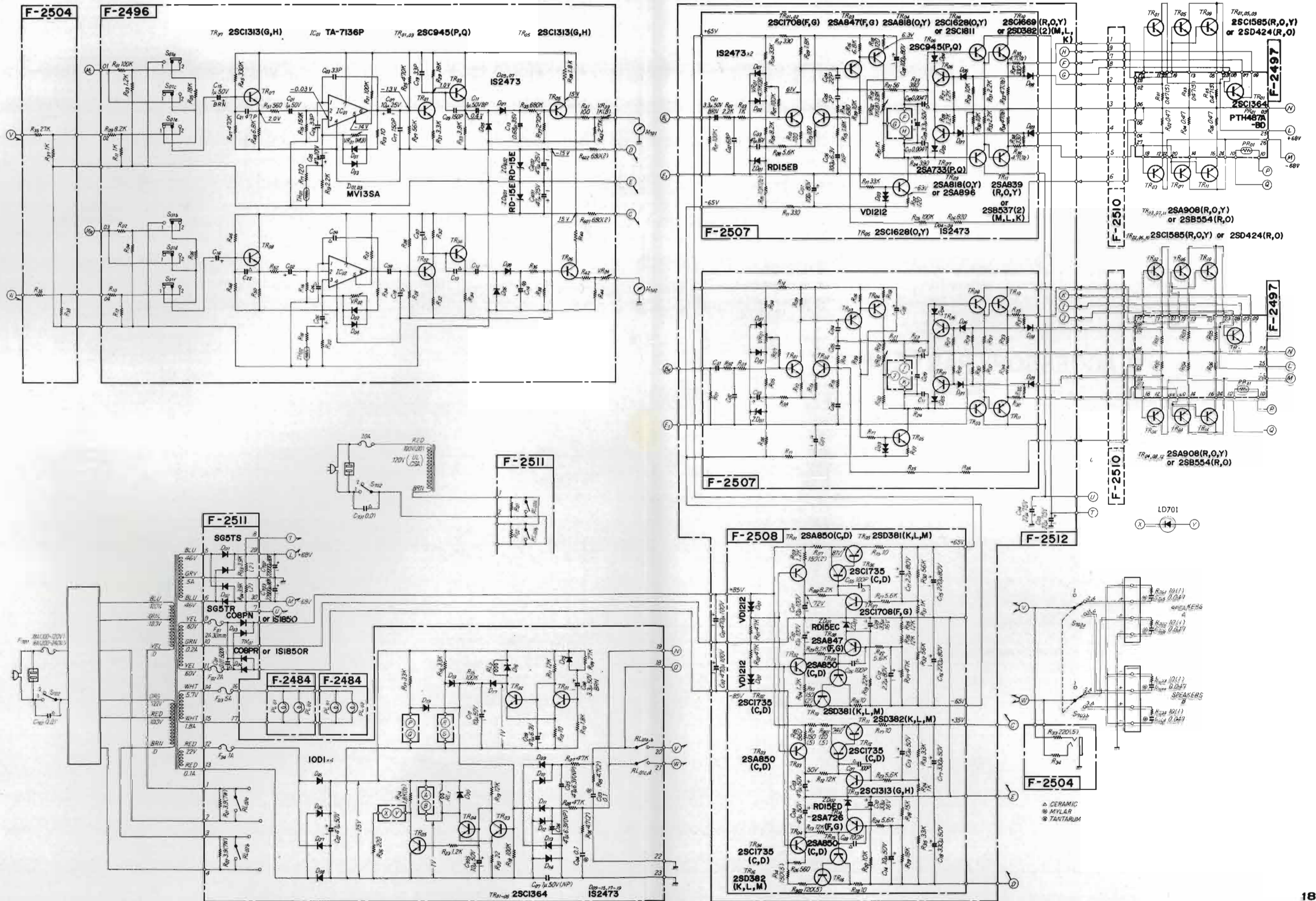
7. SCHEMATIC DIAGRAM / 7-1. Pre Amplifier Section

* La présentation et les spécifications sont susceptibles d'être modifiées sans préavis par suite d'améliorations éventuelles.
 * Änderungen, die dem technischen Fortschritt dienen, bleiben vorbehalten.
 * Design and specification subject to change without notice for improvements.



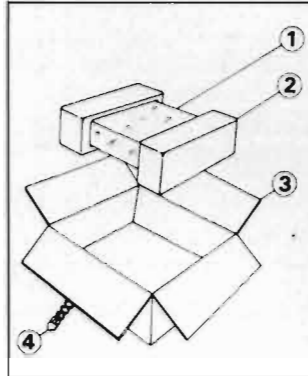
7-2. Power Amplifier Section

* La présentation et les spécifications sont susceptibles d'être modifiées sans préavis par suite d'améliorations éventuelles.
 * Änderungen, die dem technischen Fortschritt dienen, bleiben vorbehalten.
 * Design and specification subject to change without notice for improvements.



8. PACKING LIST

Parts No.	Stock No.	Description
1	9116650	Vinyl Cover
2	9027890	Stylofoam Packing
3	9009130	Carton Case
4	5996080	Curl Stopper



9. ACCESSORY PARTS LIST

Parts No.	Stock No.	Description
1	9209370	Operating Instructions
2	2410560	Short Pin Plug
3	9296090	Caution Sheet
4	9396700	Caution Tug
5	9396880	Caution Tug (For Short Pin Plug)
6	9566930	Schematic Diagram



SANSUI ELECTRIC CO., LTD.
14-1, 2-chome, Izumi, Suginami-ku, Tokyo 168, Japan.
TELEPHONE: (03) 323-1111 / TELEX: 232-2076

SM051

Printed in Japan (16720M)