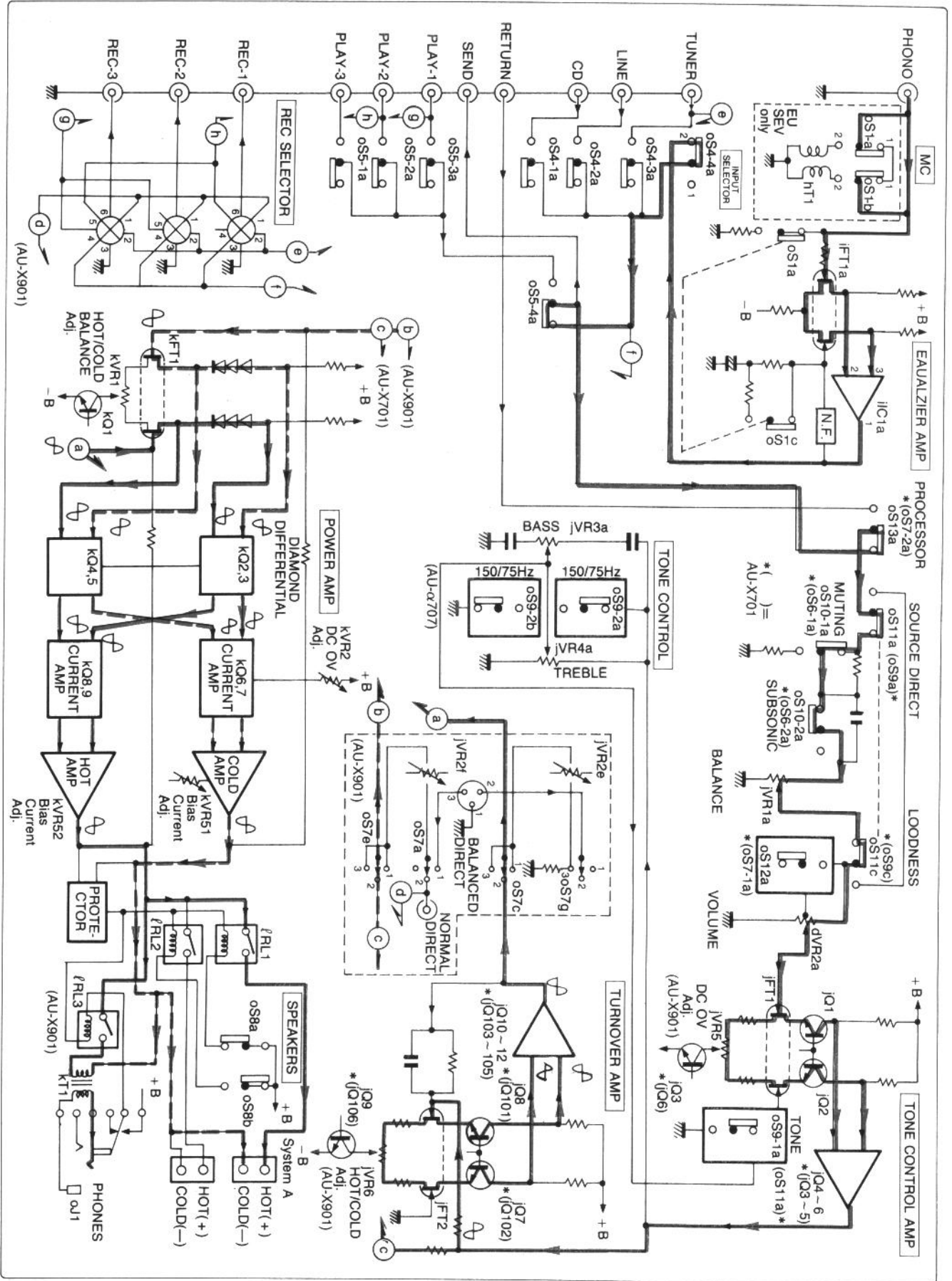


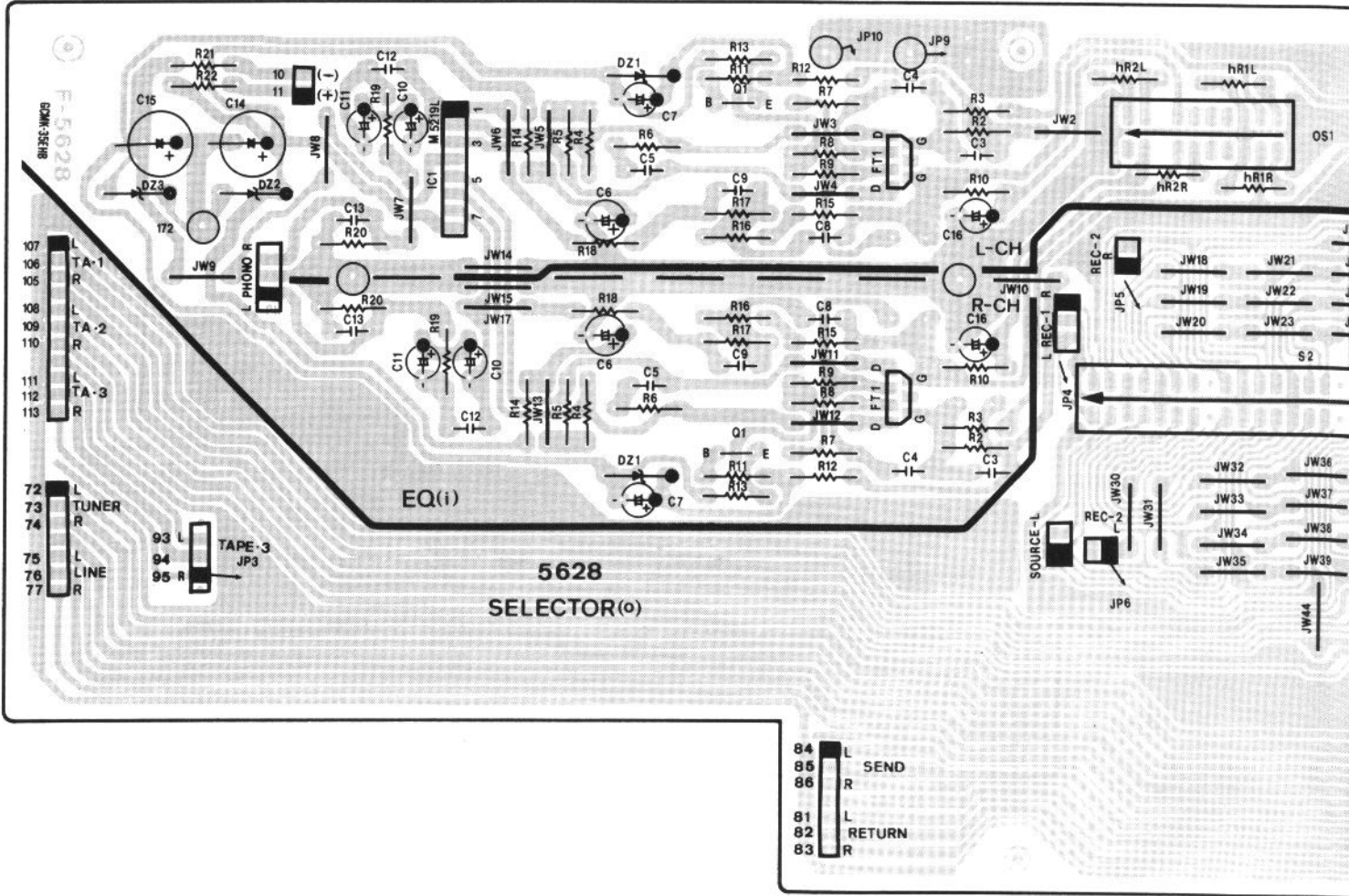
1. BLOCK DIAGRAM



4. PARTS LOCATION ON BOARD

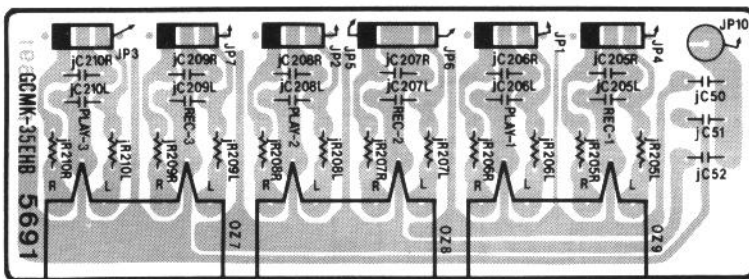
4-1. F-5628 EQ Amp & Input Terminal Board <AU-X701>

Pattern Side



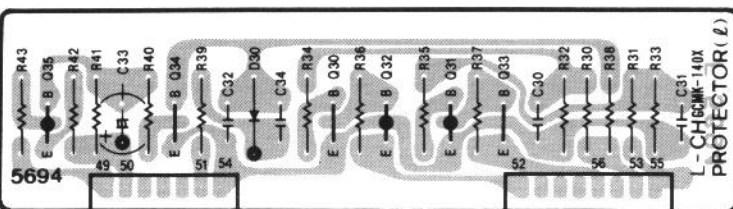
4-3. F-5691 Tape Terminal Board <AU-X701-EU·SEV/AU-X901-XX·UL·EU·SEV·CSA>

Component Side



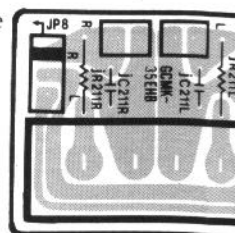
4-5. F-5694 L-CH Power Limiter Board

Component Side



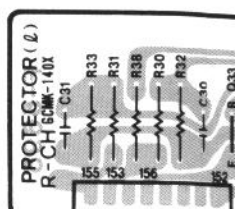
4-4. F-5692 Power Amp Direct

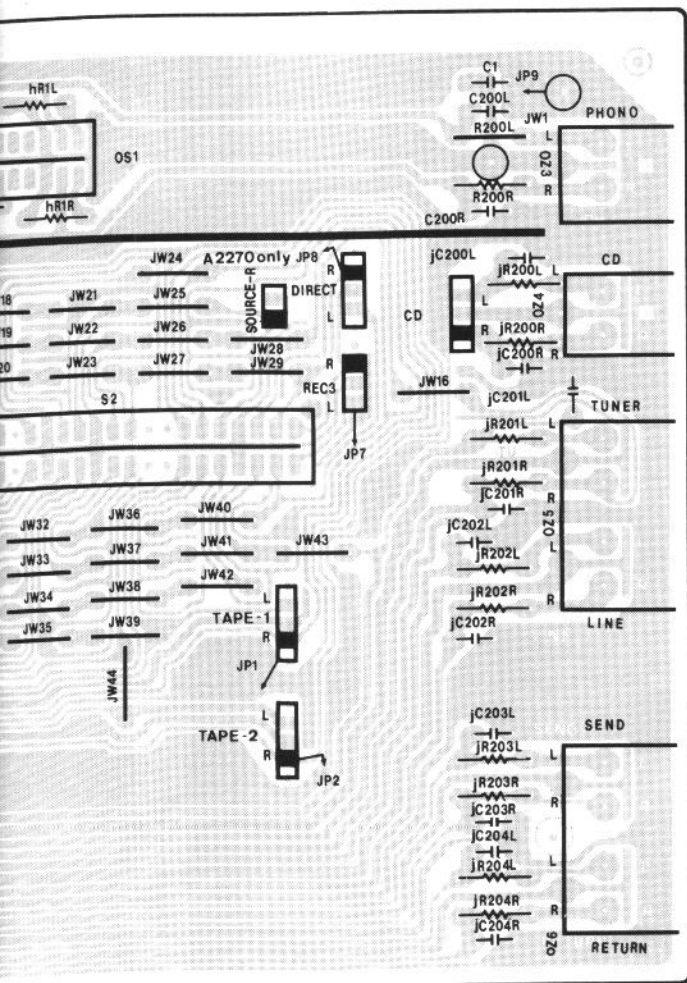
Component Side



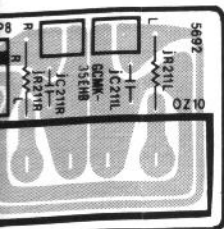
4-6. F-5695 R-CH Power Limite

Component Side

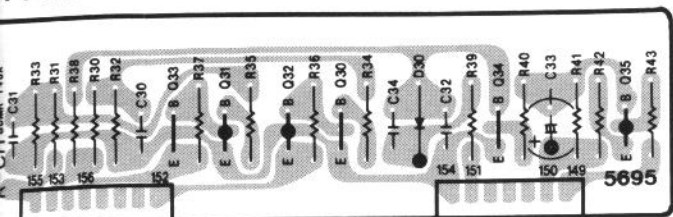




Amp Direct Terminal Board <AU-X901>

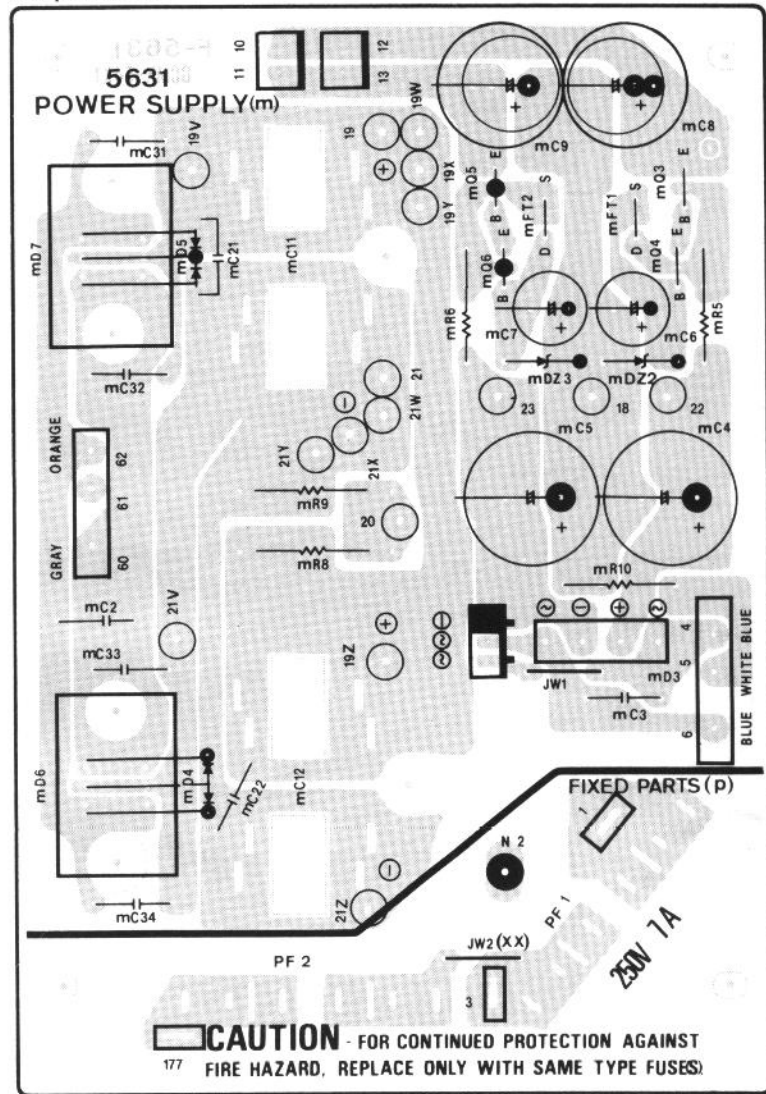


Power Limiter Board



4-2. F-5631 Power Supply Board

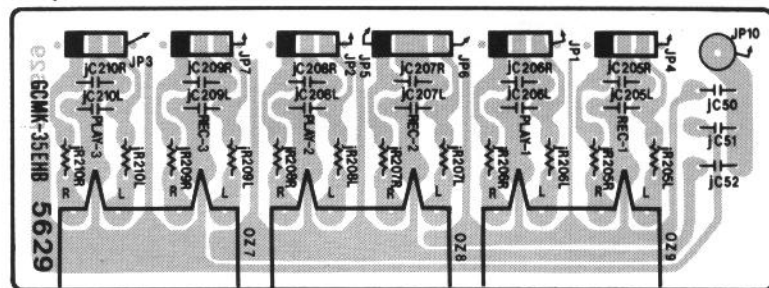
Component Side



CAUTION - FOR CONTINUED PROTECTION AGAINST FIRE HAZARD, REPLACE ONLY WITH SAME TYPE FUSES!

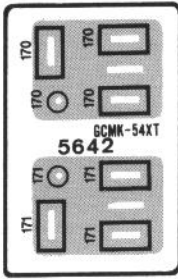
4-7. F-5629 Tape Terminal Board <AU-X701-XX-UL-CSA>

Component Side



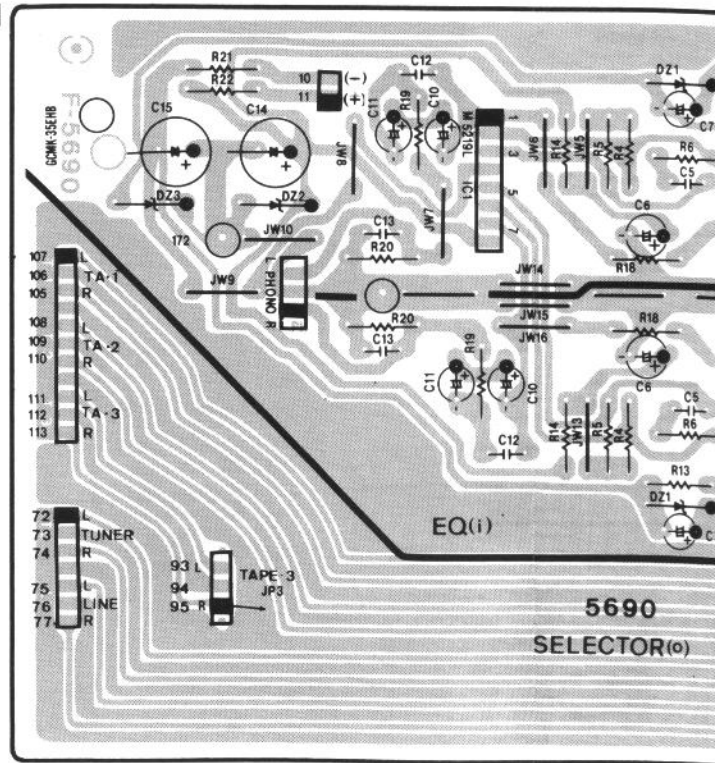
4-8. F-5642 AC Outet Board (EU, SEV)

Component Side



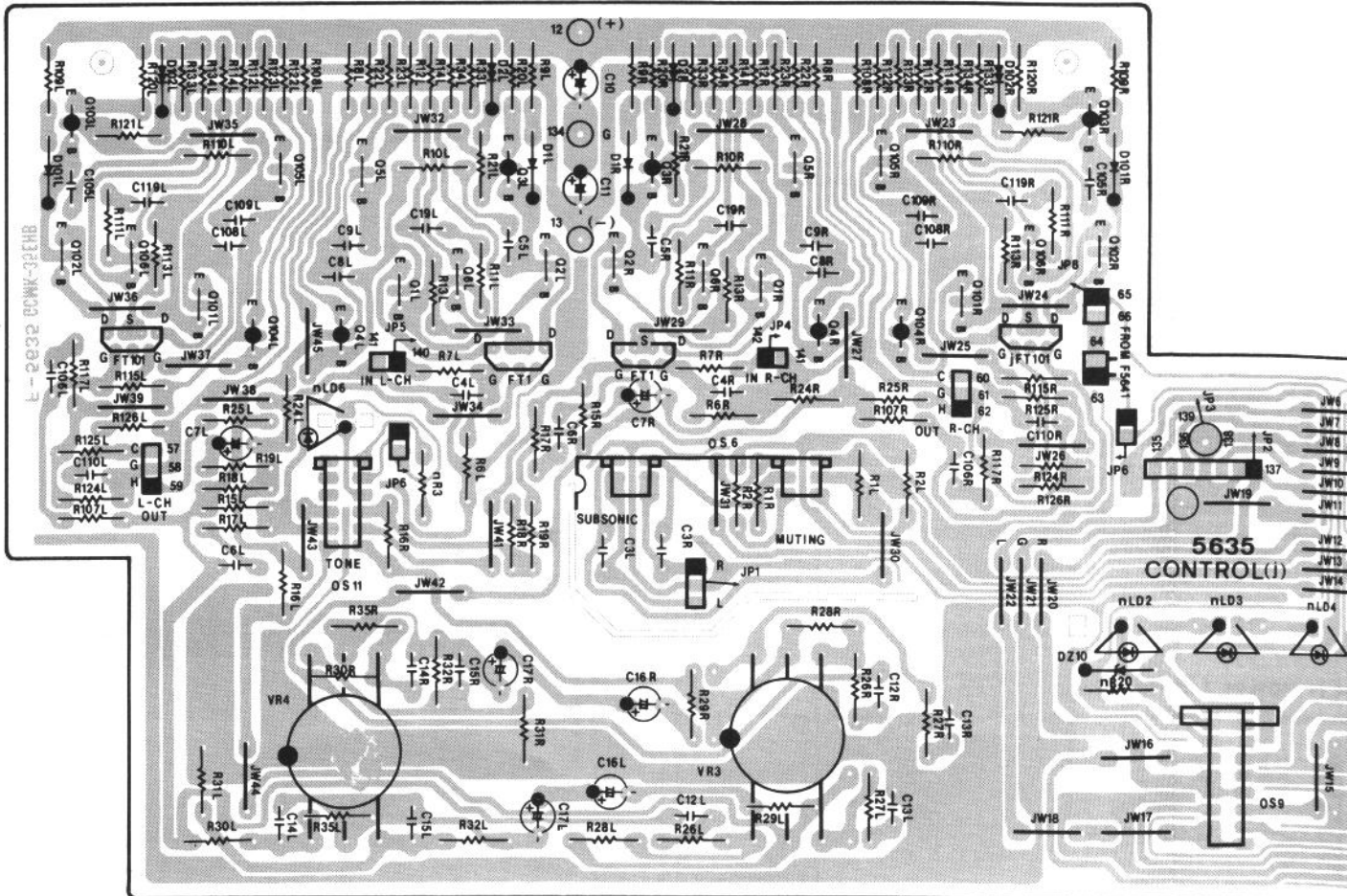
4-9. F-5690 EQ Amp & Input Terminal Board <AU-X901/AU-X701-EU>

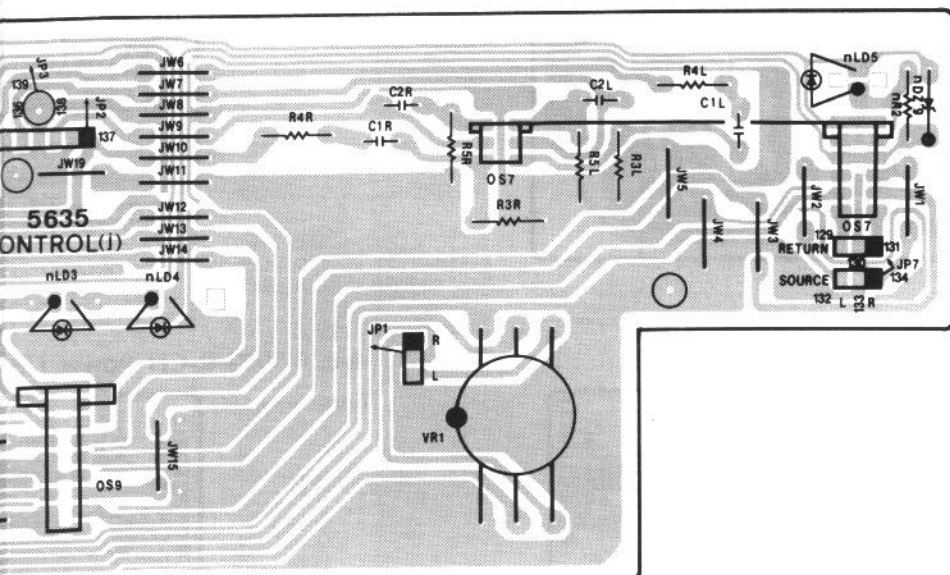
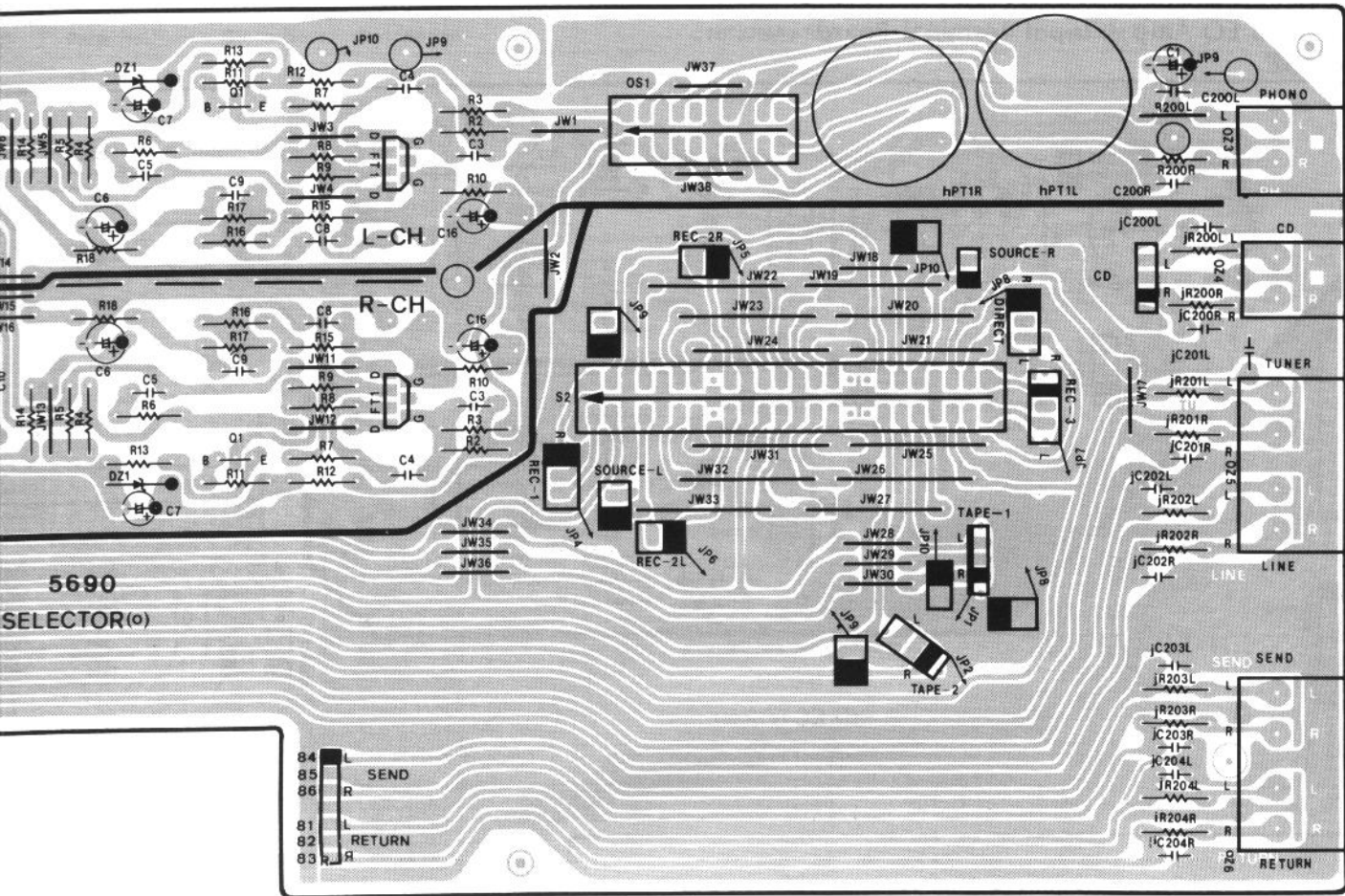
Pattern Side



4-10. F-5635 Tone Control Amp Board <AU-X701>

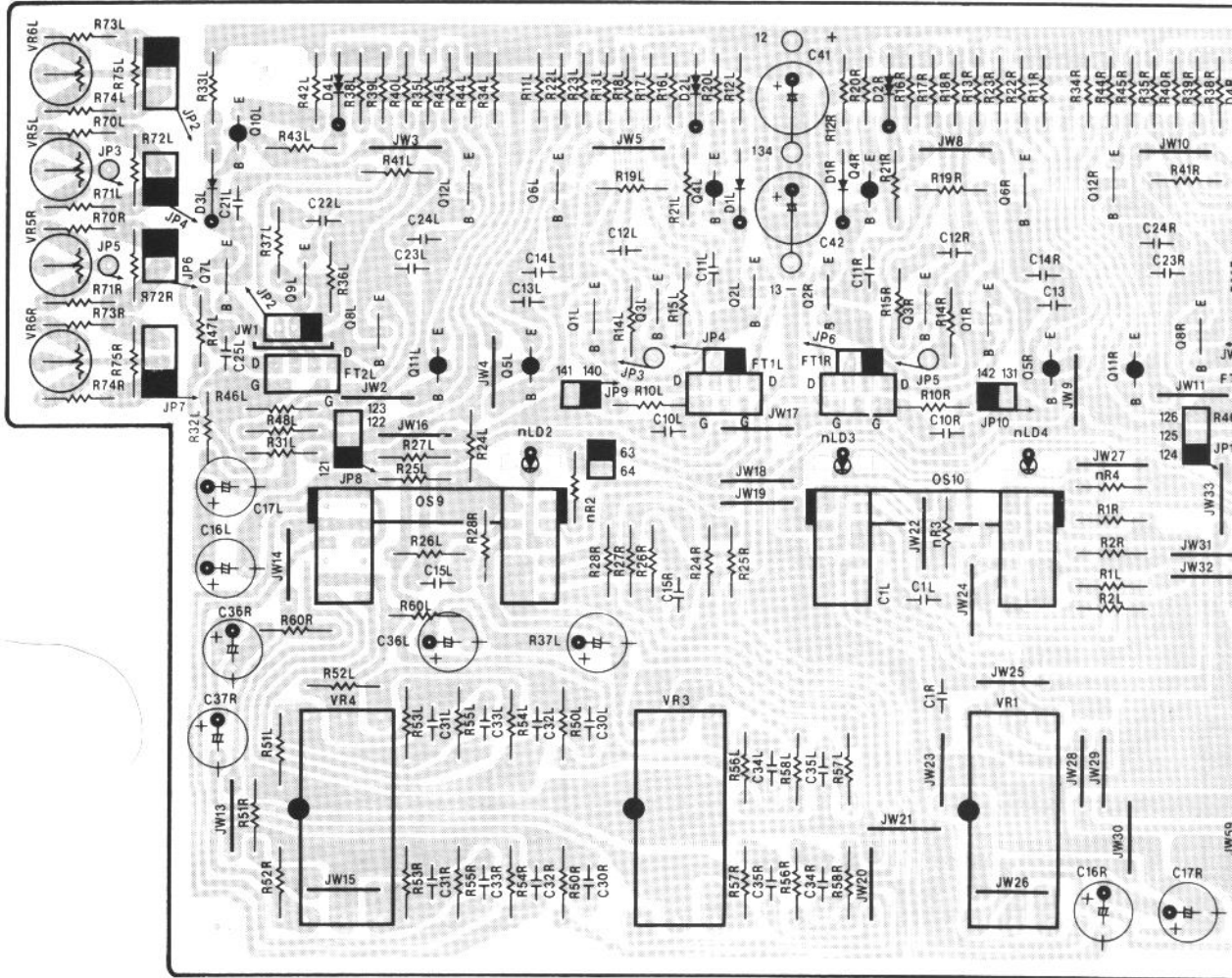
Component Side





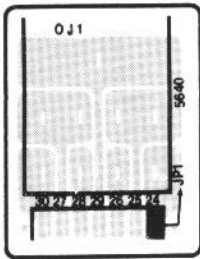
4-11. F-5643 Tone Control Amp Board <AU-X901>

Component Side



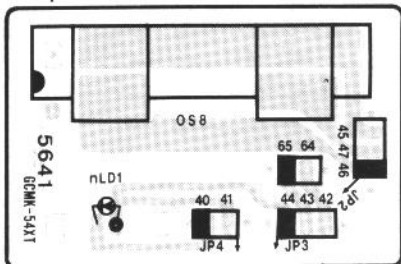
4-13. F-5640 Head Phones Board

Component Side



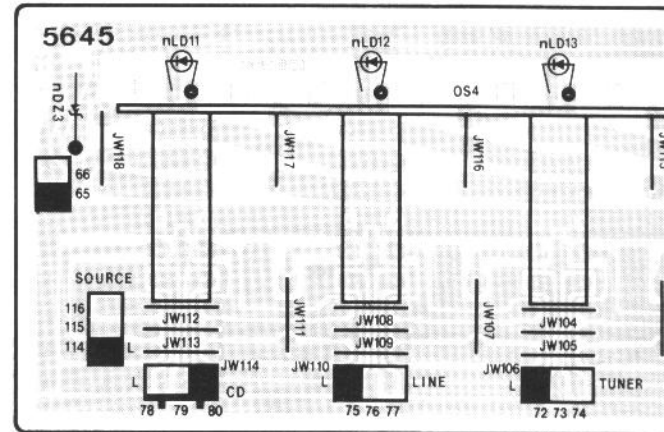
4-15. F-5641 SP SW. Board

Component Side



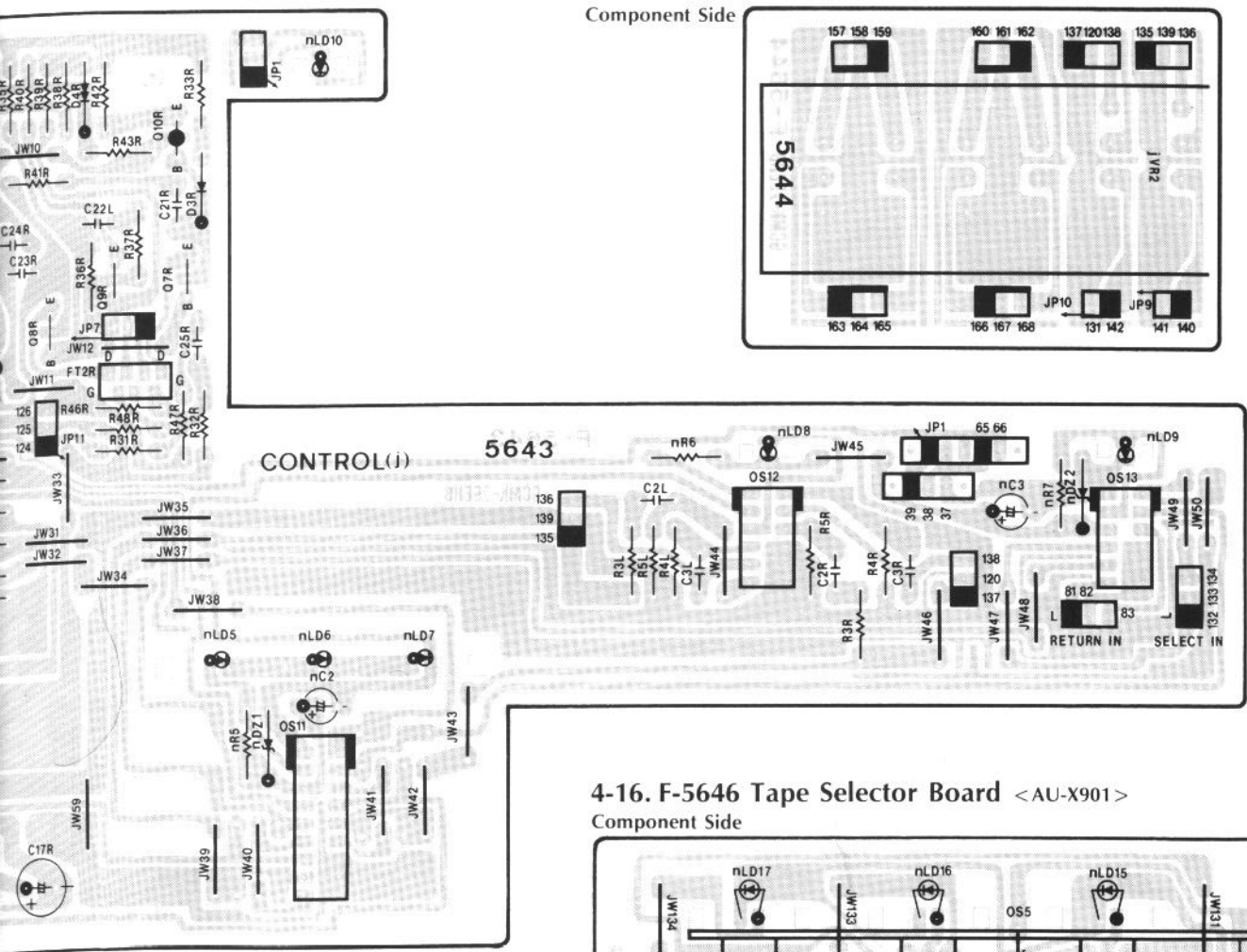
4-14. F-5645 Input Selector Board <AU-X901>

Component Side



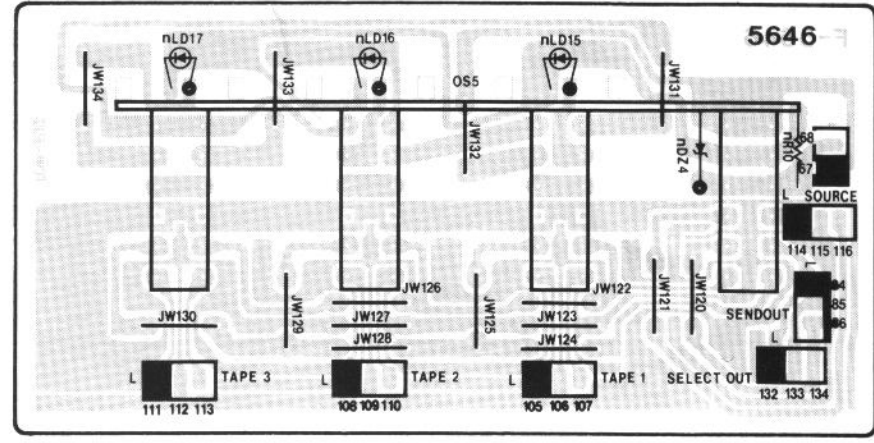
4-12. F-5644 Volume Board <AU-X901>

Component Side



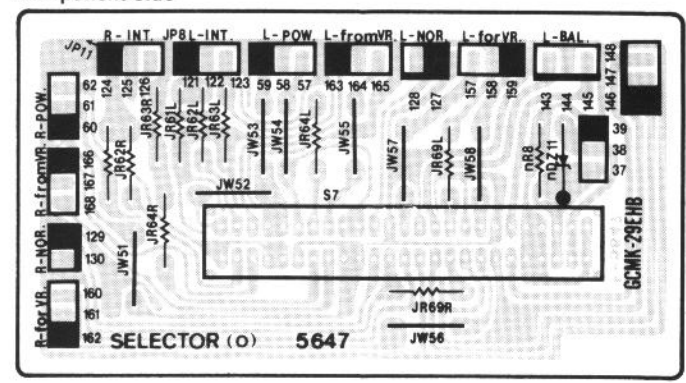
4-16. F-5646 Tape Selector Board <AU-X901>

Component Side



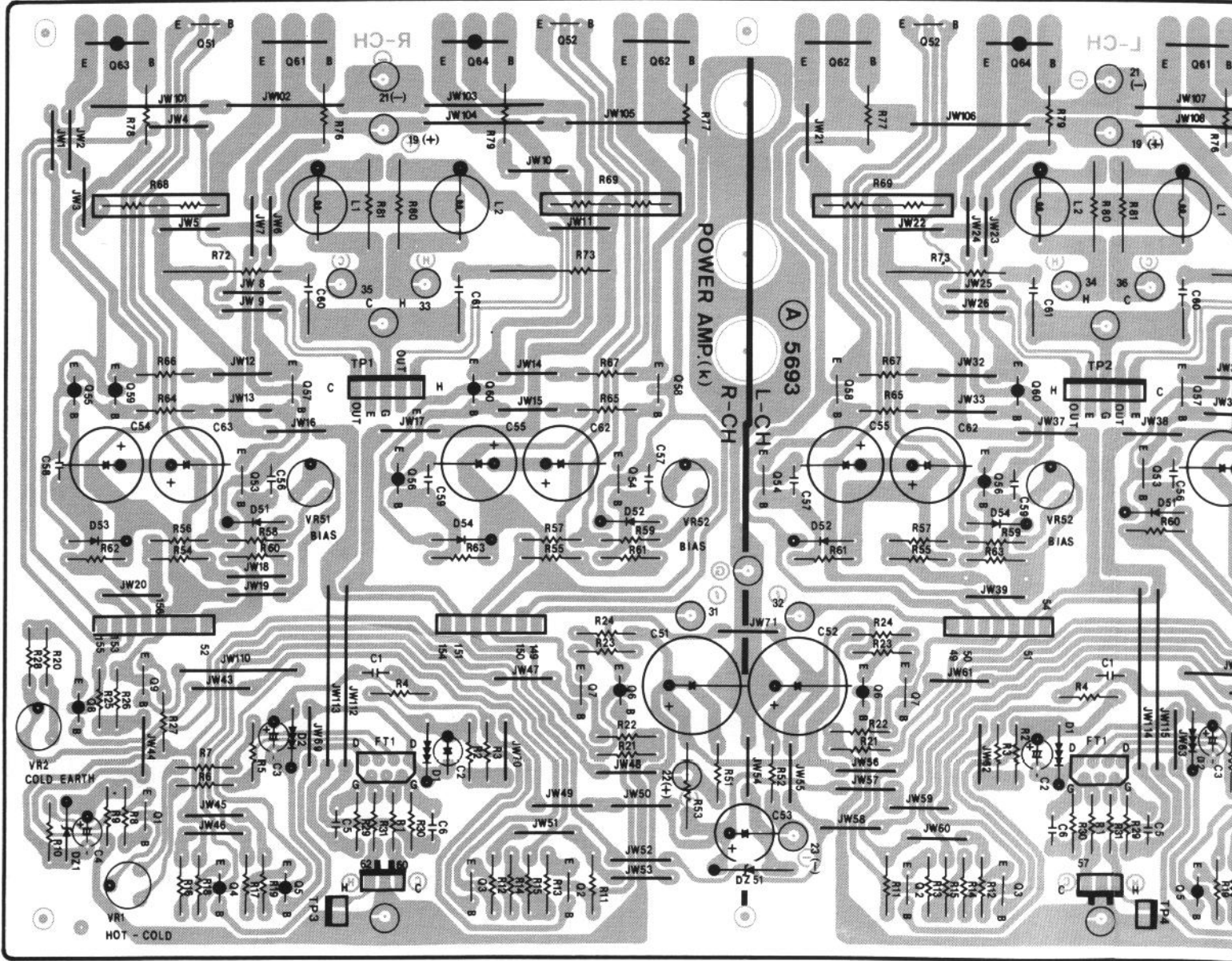
4-17. F-5647 Power Amp Direct SW. Board <AU-X901>

Component Side



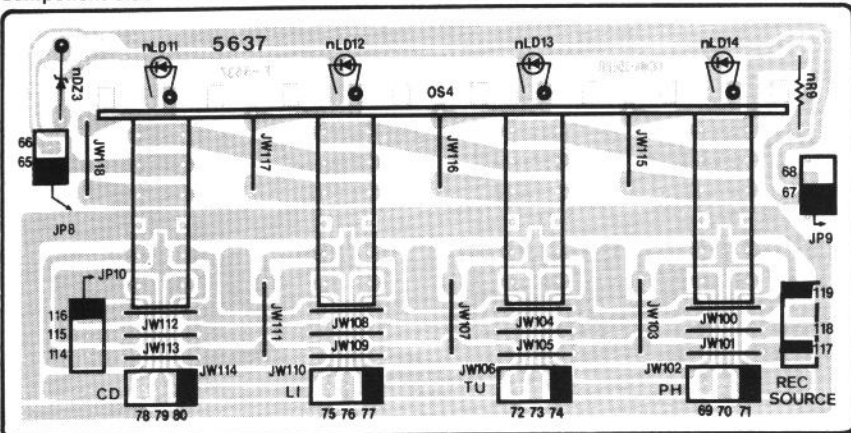
4-18. F-5693 Power Amp Board

Component Side



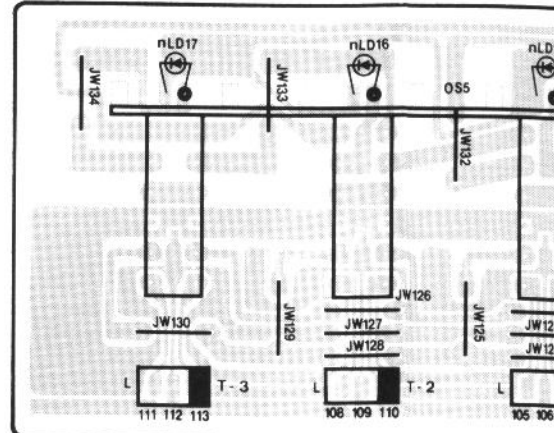
4-20. F-5637 Input Selector Board <AU-X701>

Component Side



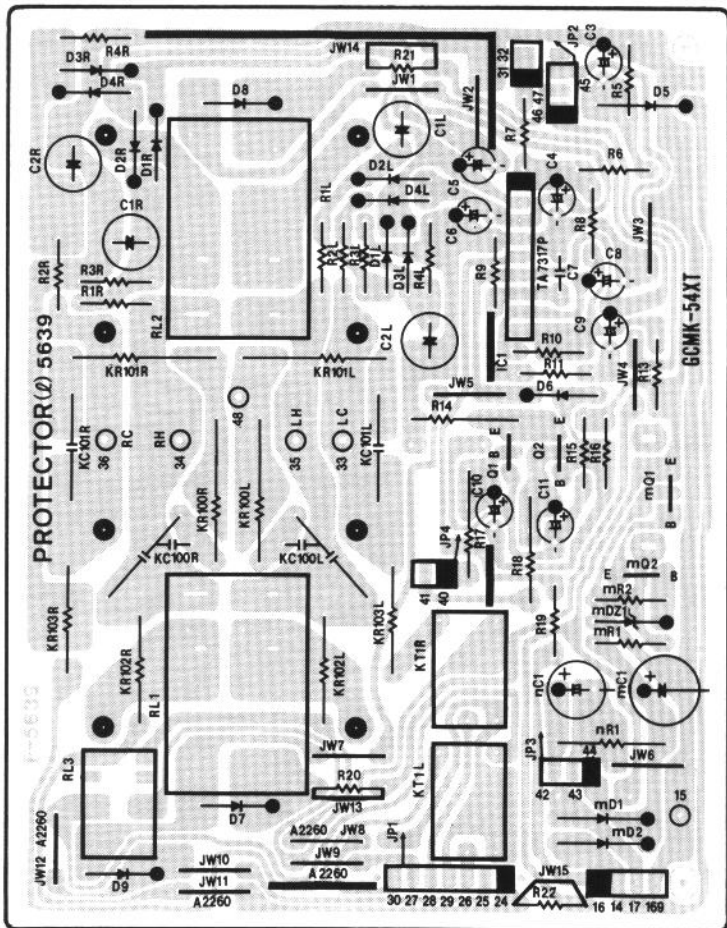
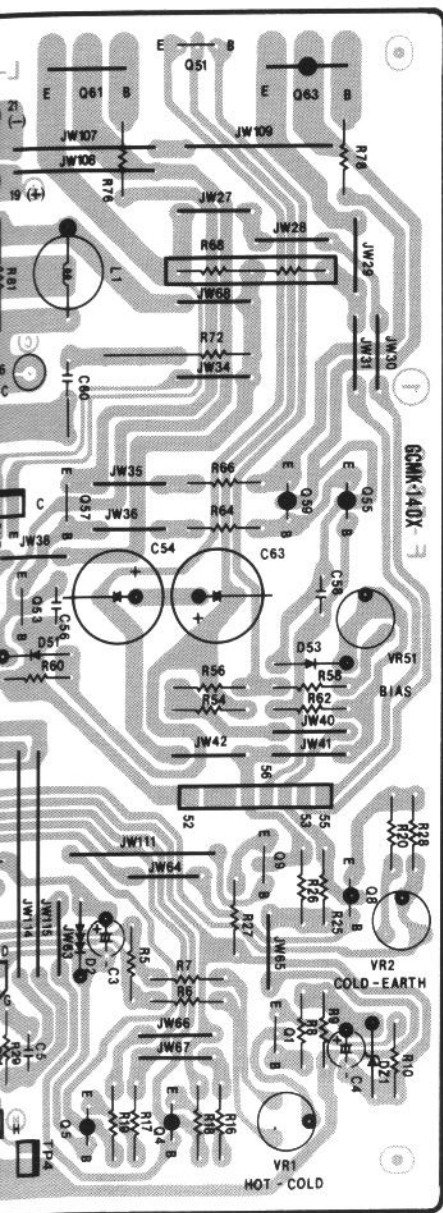
4-21. F-5638 Tape Selector Board <AU-X701>

Component Side



4-19. F-5639 Protector Board

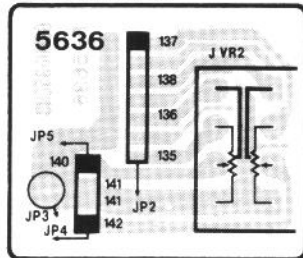
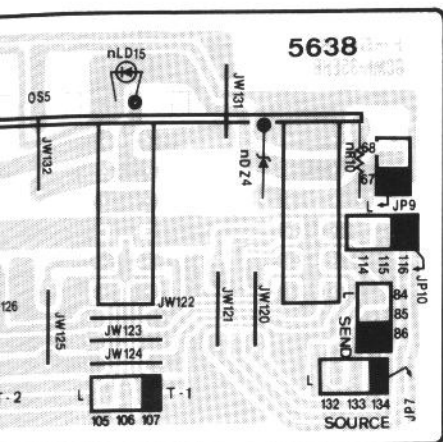
Pattern Side



ard <AU-X701>

4-22. F-5636 Volume Board <AU-X701>

Component Side



A

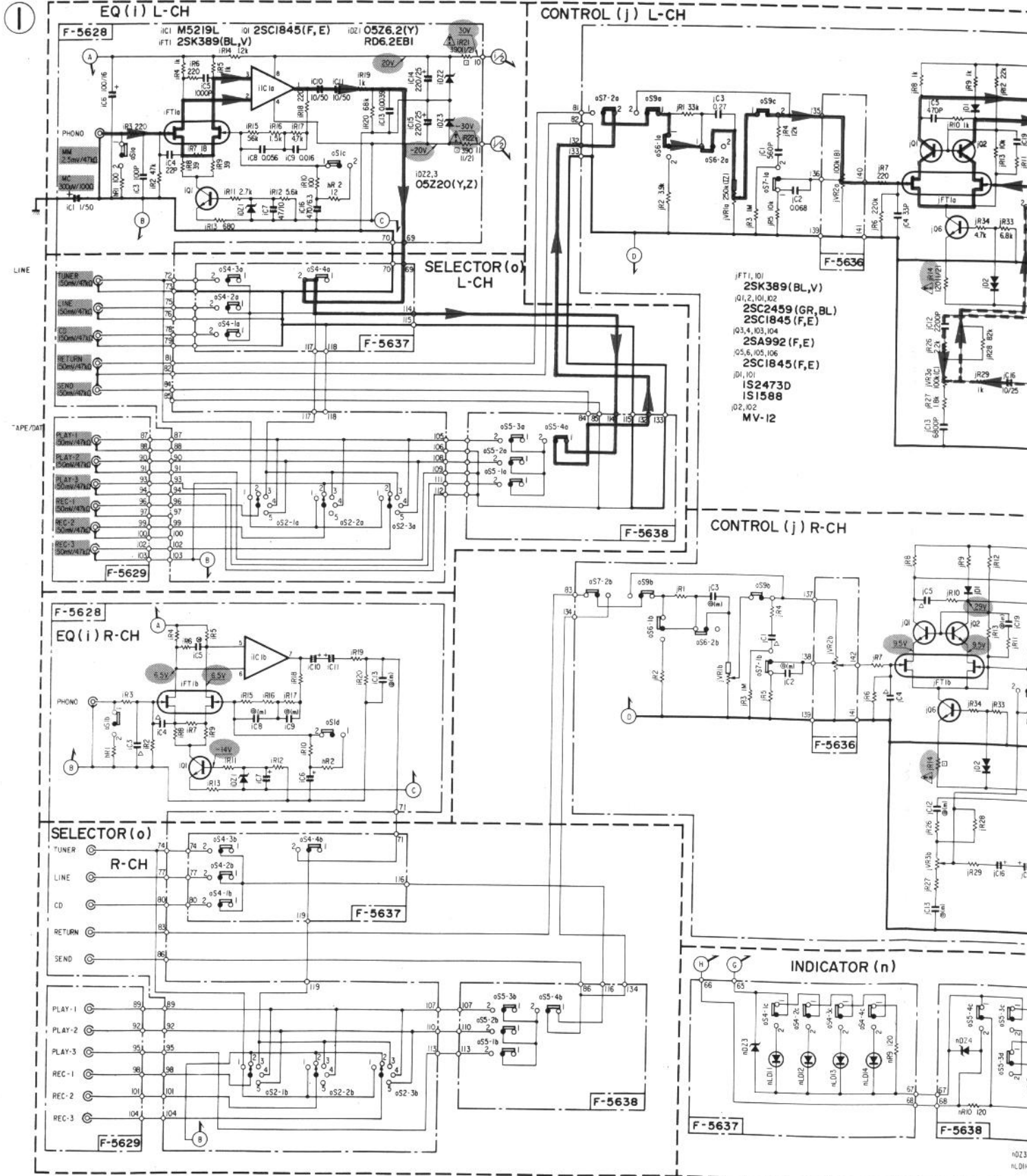
B

C

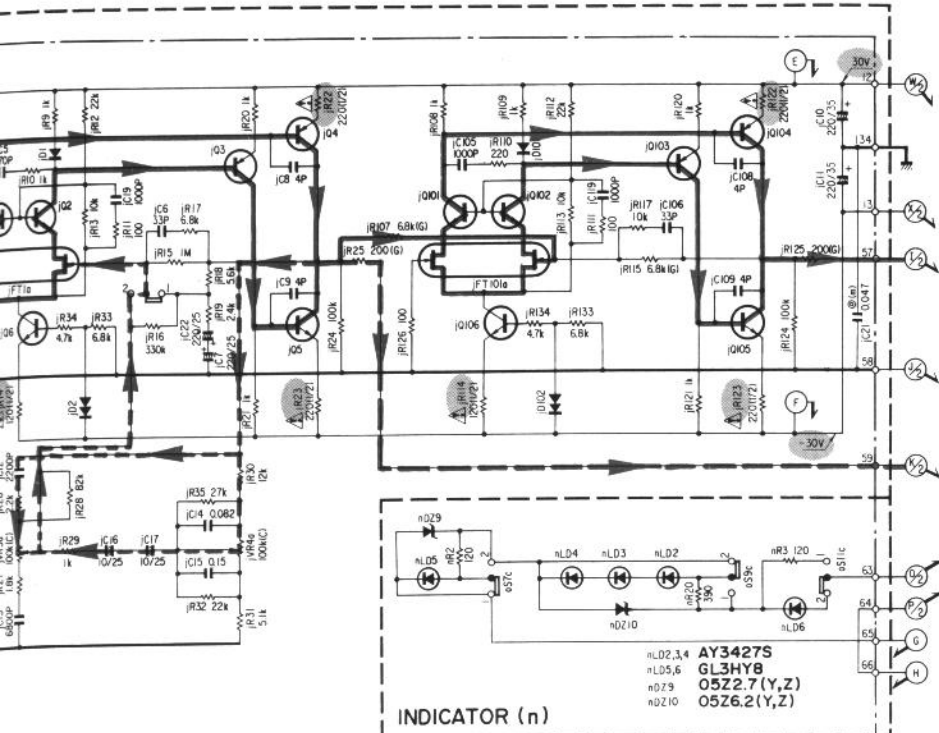
D

6. SCHEMATIC DIAGRAM

6-1. EQ Amp & Control Amp Section (XX, UL, CSA) <AU-X701>

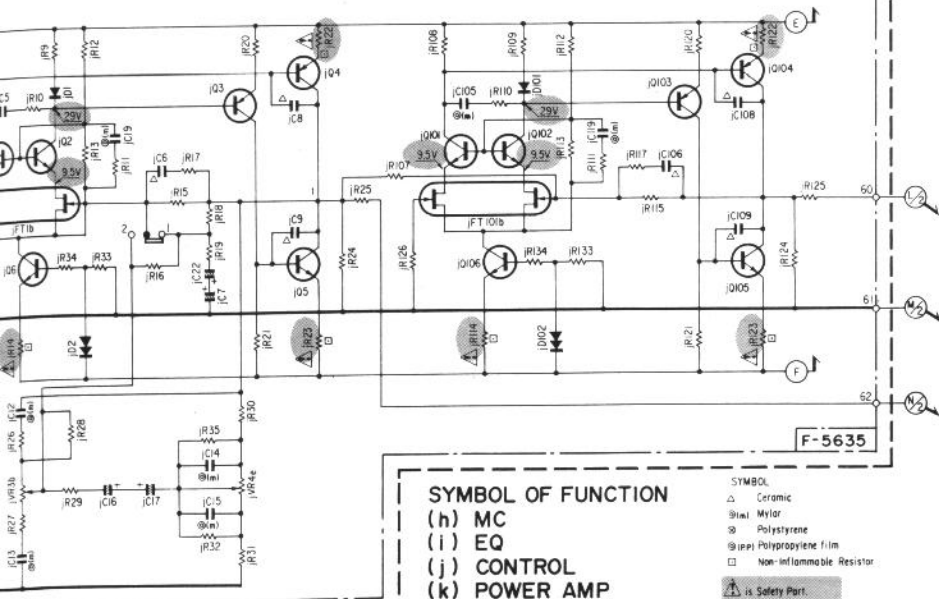


* Design and specifications subject to change without notice for improvement.
 * La présentation et les spécifications sont susceptibles d'être modifiées sans préavis par suites d'améliorations éventuelles.
 * Änderungen, die dem technischen Fortschritt dienen, bleiben vorbehalten.



INDICATOR (n)

nLD2,3,4 AY3427S
 nLD5,6 GL3HY8
 nD29 05Z2.7 (Y,Z)
 nD10 05Z6.2 (Y,Z)



SYMBOL OF FUNCTION

- (h) MC
- (i) EQ
- (j) CONTROL
- (k) POWER AMP
- (l) PROTECTOR
- (m) POWER SUPPLY
- (n) INDICATOR
- (o) SELECTOR
- (p) FIXED PARTS

SYMBOL
 △ Ceramic
 ⊖/m Mylar
 ⊗ Polystyrene
 ⊕/p Polypropylene film
 □ Non-inflammable Resistor

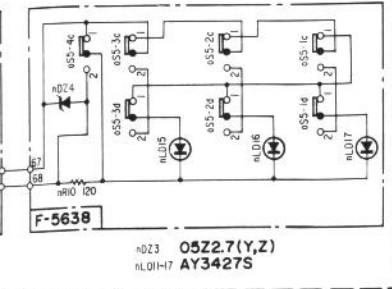
⚡ is Safety Part.
 Use only replacement parts recommended by the manufacturer.

RESISTORS
 Are in ohms, 1/4 Watts, 1.5% Tolerance Unless otherwise Noted as kΩ, M, MΩ

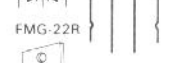
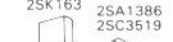
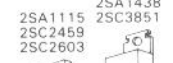
TOLERANCE
 G ± 2%

CAPACITORS
 Are in μF, Unless otherwise Noted p, pF

ELECTROLYTIC CAPACITOR
 Capacitance (μF / Volt (V))



nD23 05Z2.7 (Y,Z)
 nLD11-17 AY3427S



- SWITCHES
- o51 CARTRIDGE SELECTOR
 - 1 MM
 - 2 MC
 - o52 REC SELECTOR
 - 1 TUNER
 - 2 OFF
 - 3 SOURCE
 - 4 1 → 2,3
 - 5 2 → 1,3
 - o54 LINE SELECTOR
 - 1 CD
 - 2 LINE
 - 3 TUNER
 - 4 PHONO
 - o55 TAPE SELECTOR
 - 1 TAPE 3
 - 2 TAPE 2
 - 3 TAPE 1
 - 4 TAPE / LINE
 - o56-1 MUTING
 - 1 OFF 2 ON
 - o56-2 SUBSONIC
 - 1 OFF 2 ON
 - o57-1 LOUDNESS
 - 1 OFF 2 ON
 - o57-2 PROCESSOR
 - 1 SOURCE
 - 2 RETURN
 - o59 SOURCE DIRECT
 - 1 OFF 2 ON
 - o511 TONE
 - 1 OFF 2 ON

1

2

3

4

5

A

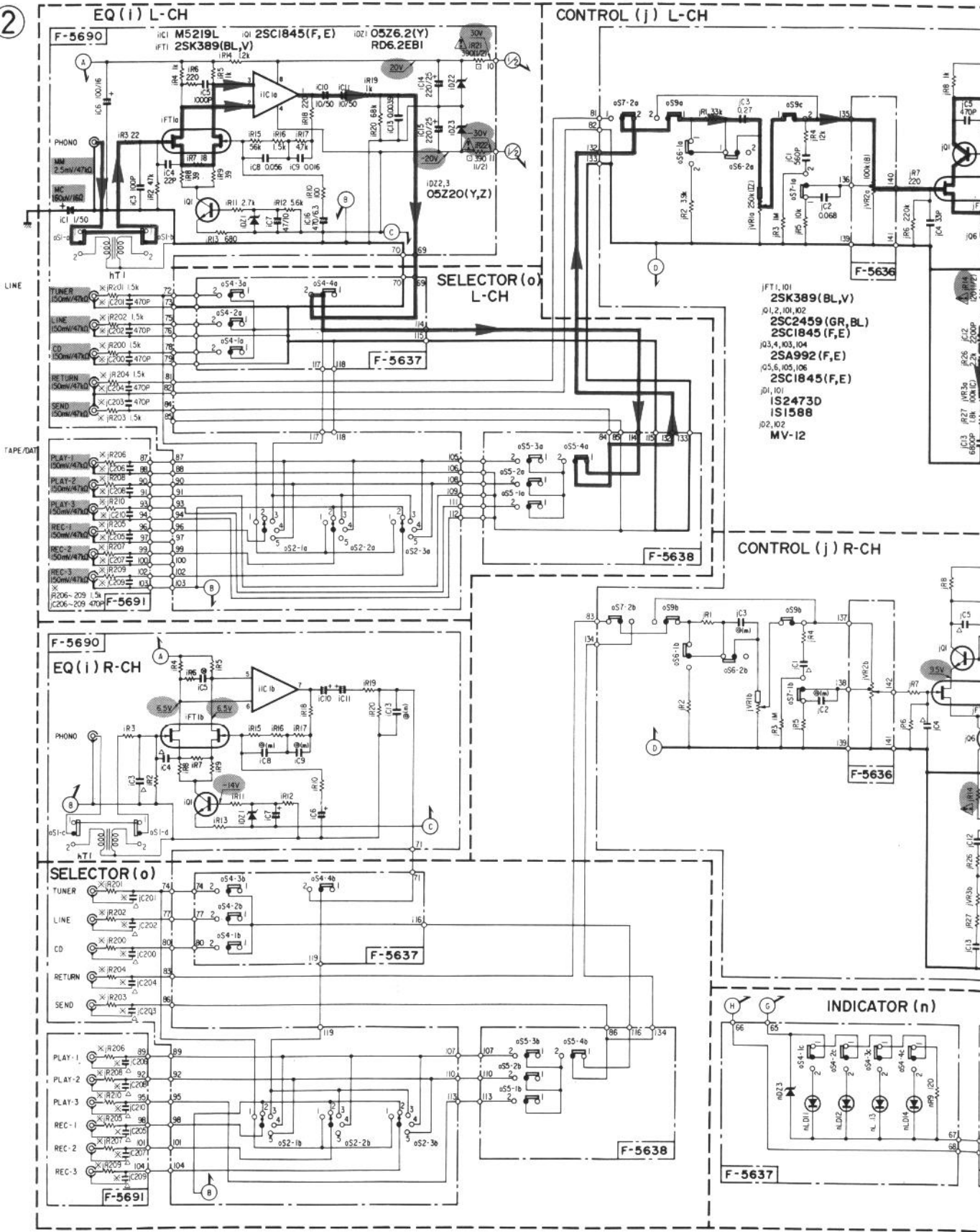
B

C

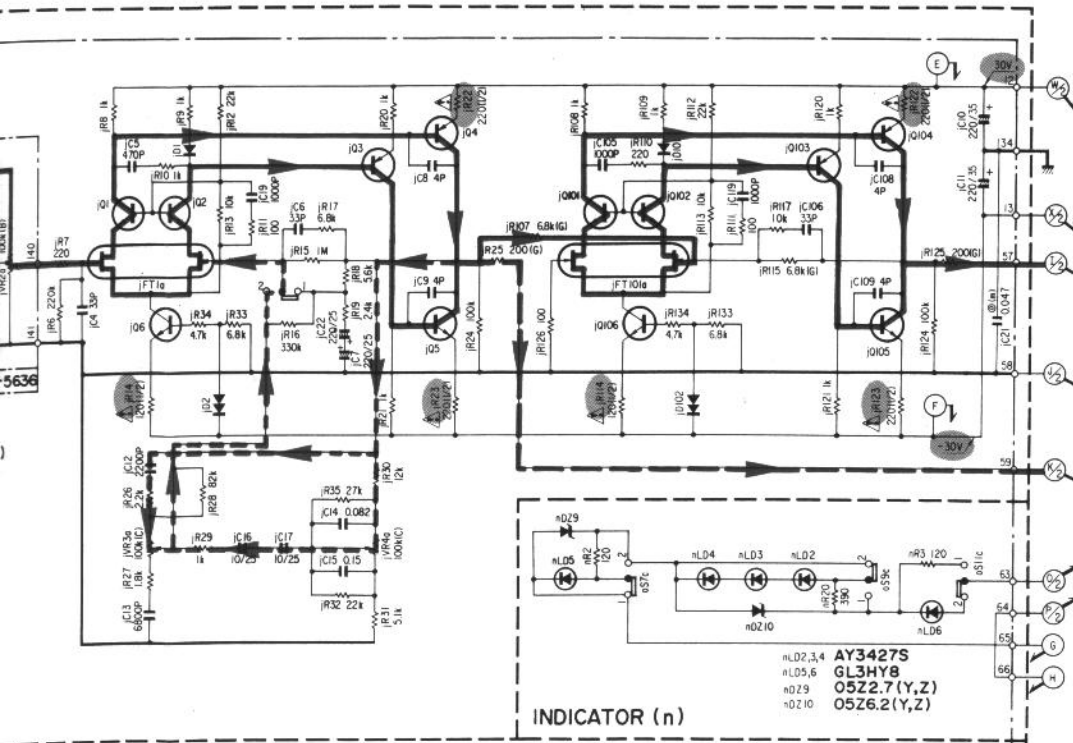
D

6-2. EQ Amp & Control Amp Section (EU, SEV) <AU-X701>

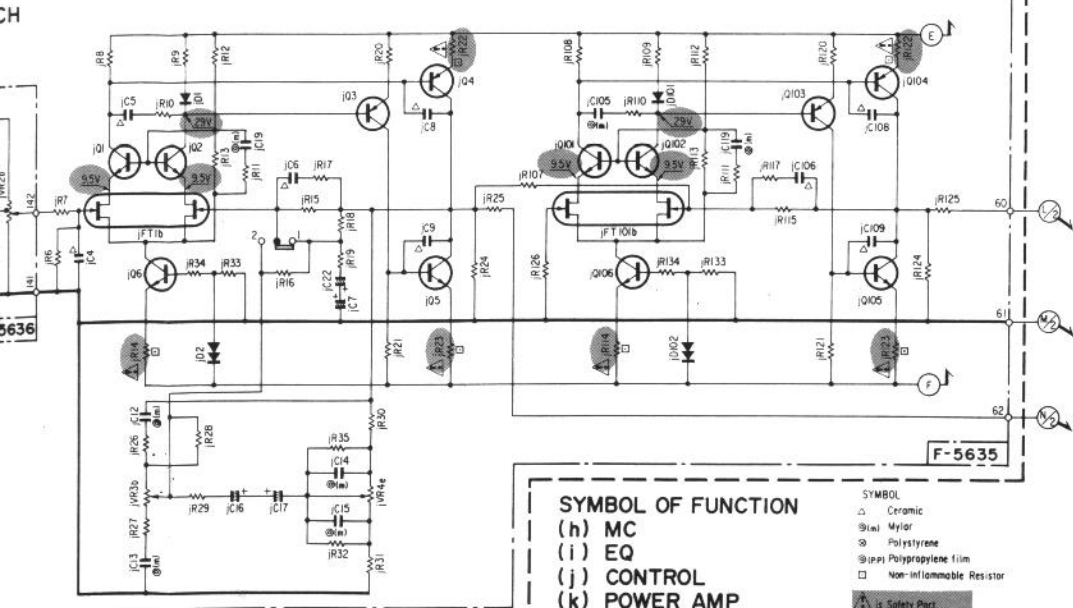
2



* Design and specifications subject to change without notice for improvement.
 * La présentation et les spécifications sont susceptibles d'être modifiées sans préavis par suites d'améliorations éventuelles.
 * Änderungen, die dem technischen Fortschritt dienen, bleiben vorbehalten.



INDICATOR (n)



F-5635

SYMBOL OF FUNCTION

- (h) MC
- (i) EQ
- (j) CONTROL
- (k) POWER AMP
- (l) PROTECTOR
- (m) POWER SUPPLY
- (n) INDICATOR
- (o) SELECTOR
- (p) FIXED PARTS

- SYMBOL
- Ceramic
 - ⊗ Mylar
 - ⊙ Polystyrene
 - ⊕ Polypropylene film
 - Non-Inflammable Resistor

⚠ Safety Part
 Use only replacement parts recommended by the manufacturer.

RESISTORS
 Are in ohms, 1/4 Watts, ±5% Tolerance Unless otherwise noted. k, M, MG

TOLERANCE
 ± 2%

CAPACITORS
 Are in μF, Unless otherwise noted. P, pF

ELECTROLYTIC CAPACITOR
 Capacitance (μF) / Volt (V)

- SWITCHES
- o51 CARTRIDGE SELECTOR
 - 1. MM
 - 2. MC
 - o52 REC SELECTOR
 - 1. TUNER
 - 2. OFF
 - 4. 1=SOURCE
 - 5. 2=1,3
 - o54 LINE SELECTOR
 - 1. CD
 - 2. LINE
 - 3. TUNER
 - 4. PHONO
 - o55 TAPE SELECTOR
 - 1. TAPE 3
 - 2. TAPE 2
 - 3. TAPE 1
 - 4. TAPE /LINE
 - o56-1 MUTING
 - 1. OFF 2. ON
 - o56-2 SUBSONIC
 - 1. OFF 2. ON
 - o57-1 LOUDNESS
 - 1. OFF 2. ON
 - o57-2 PROCESSOR
 - 1. SOURCE
 - 2. RETURN
 - o59 SOURCE DIRECT
 - 1. OFF 2. ON
 - o511 TONE
 - 1. OFF 2. ON

* FTZ MODEL only



- 2SA992
- 2SA1049
- 2SA1145
- 2SC1815
- 2SC1845
- 2SC2705
- 2SD357
- 2SA1115
- 2SC2459
- 2SC2603
- 2SA1438
- 2SC3851
- 2SK163
- 2SA1386
- 2SC3519
- 2SK389
- 2SA1306
- 2SC3298
- TA7317P
- M5219L
- FMG-22S
- UB-152LFF
- FMG-22R
- 1S1588
- 1S2091
- 1S2473D
- 10E2
- 11E2
- MV12
- MV103
- 05Z2.7
- 05Z6.2
- 05Z7.5
- 05Z20
- 05Z24
- 05Z33
- RD6.2E
- RD22F

1

2

3

4

5

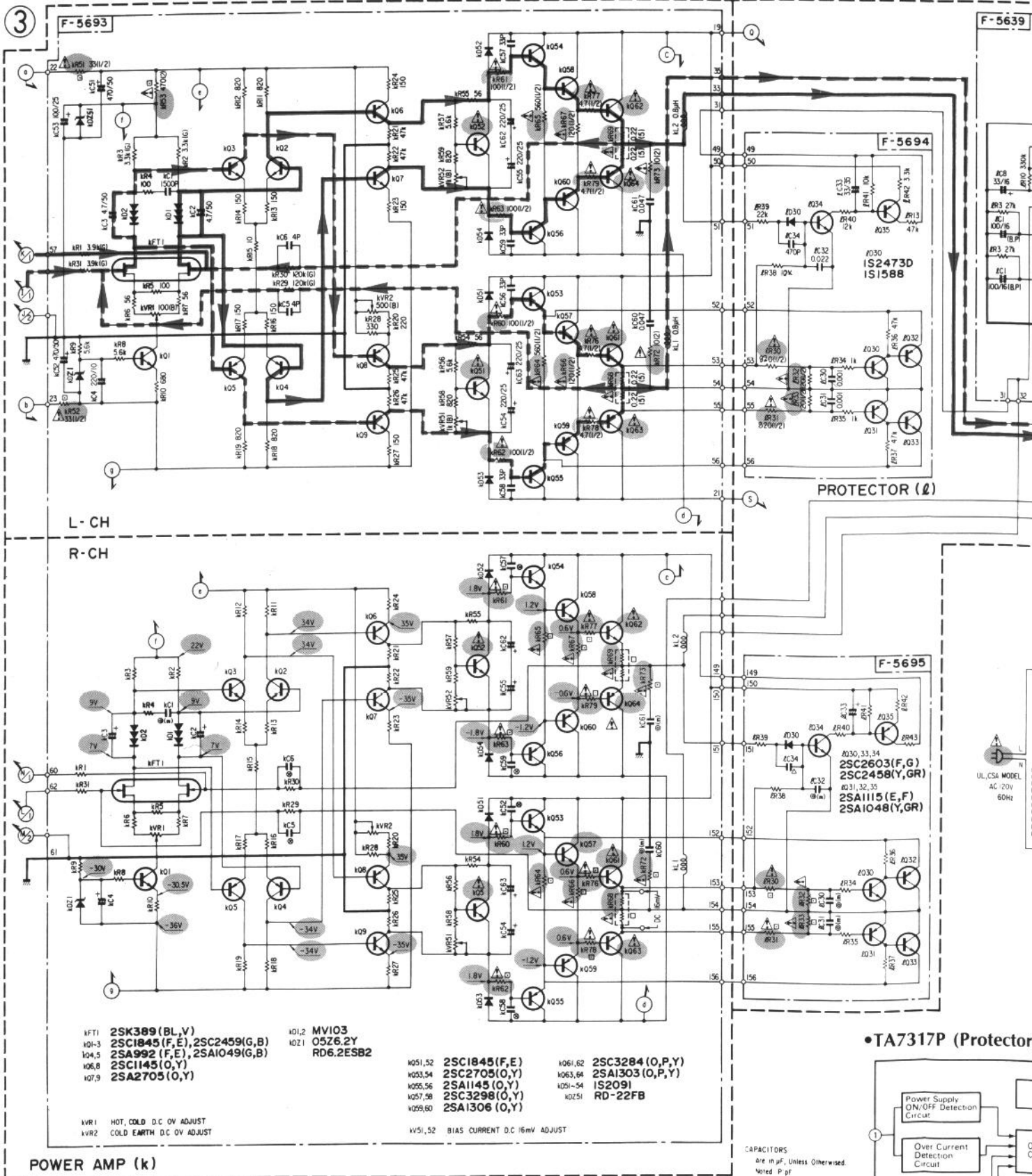
A

B

C

D

6-3. Power Amp & Power Section <AU-X701>



F-5693

F-5639

F-5694

F-5695

L-CH

R-CH

PROTECTOR (l)

- KFT1 2SK389 (BL,V)
- K01-3 2SC1845 (F,E), 2SC2459 (G,B)
- K04,5 2SA992 (F,E), 2SA1049 (G,B)
- K06,8 2SC1145 (O,Y)
- K07,9 2SA2705 (O,Y)
- K01,2 MV103
- K02,1 05Z6.2Y
- RD6.2ESB2

- K051,52 2SC1845 (F,E)
- K053,54 2SC2705 (O,Y)
- K055,56 2SA1145 (O,Y)
- K057,58 2SC3298 (O,Y)
- K059,60 2SA1306 (O,Y)
- K061,62 2SC3284 (O,P,Y)
- K063,64 2SA1303 (O,P,Y)
- K051-54 IS2091
- K0251 RD-22FB

KWR1 HOT, COLD D.C. OV ADJUST
KWR2 COLD EARTH D.C. OV ADJUST

KV51,52 BIAS CURRENT D.C. 16mV ADJUST

SYMBOL OF FUNCTION (n) INDICATOR
(l) PROTECTOR (o) SELECTOR
(m) POWER SUPPLY (p) FIXED PARTS

SYMBOL
 Δ Ceramic Capacitor
 (M) Mylar
 ⊕ Polystyrene
 □ Non-inflammable Resistor
 □ Cement Resistor

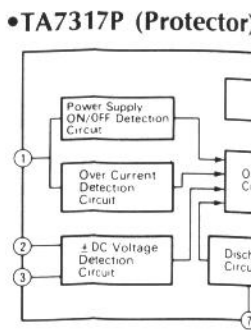
SWITCHES
 ○SB-a SPEAKER-A
 | OFF 2 ON
 ○SB-b SPEAKER-B
 | OFF 2 ON

RESISTORS
 Are in ohms, 1/4 Watts, ±5%
 Tolerance Unless Otherwise
 Noted x kΩ, M, MΩ

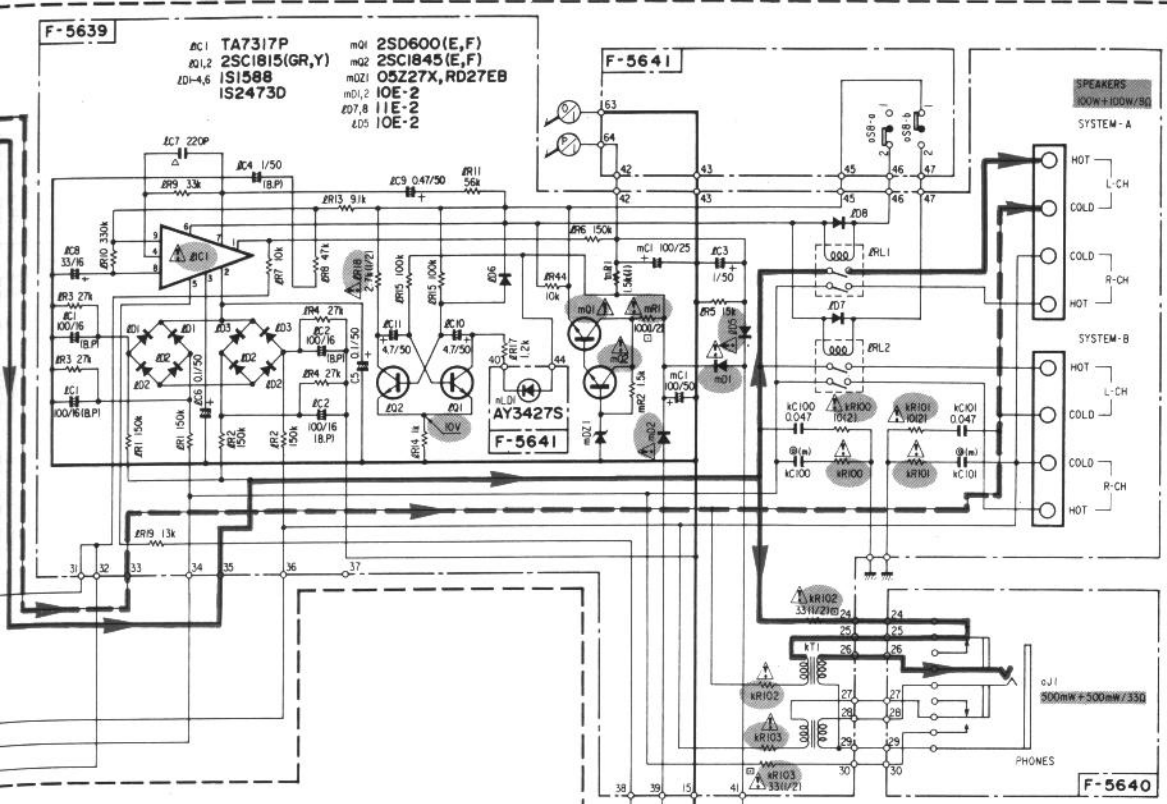
CAPACITORS
 Are in μF, Unless Otherwise
 Noted P pF

ELECTROLYTIC CAPACITANCE
 Capacitance (μF/volt/v)

TOLERANCE
 ± 2%



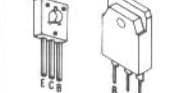
* Design and specifications subject to change without notice for improvement.
 * La présentation et les spécifications sont susceptibles d'être modifiées sans préavis par suites d'améliorations éventuelles.
 * Änderungen, die dem technischen Fortschritt dienen, bleiben vorbehalten.



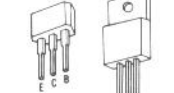
- 2SA992
- 2SA1049
- 2SA1145
- 2SC1815
- 2SC1845
- 2SC2705



- 2SA1303
- 2SC3284



- 2SA1048
- 2SA1115
- 2SC2459
- 2SC2603



- 2SK163
- 2SC2458



- 2SK389
- TA7317P



- M5219L
- FMU-22S



- RB-152
- FMU-22R



- 1S1588
- 1S2091
- 1S2473D
- 10E2
- 11F2



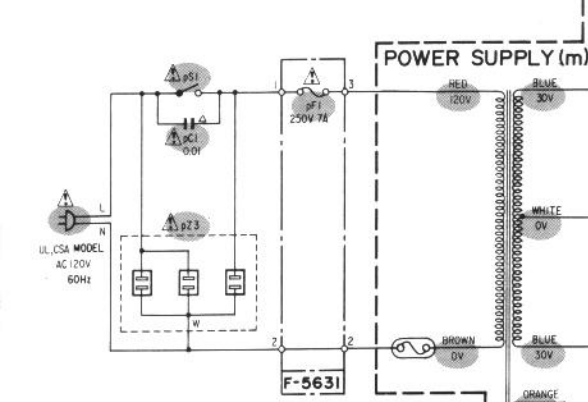
- MV12
- MV103



- 05Z2.7
- 05Z6.2
- 05Z20
- 05Z27
- 05Z33
- RD6.2E
- RD22F
- RD27E
- RD33E



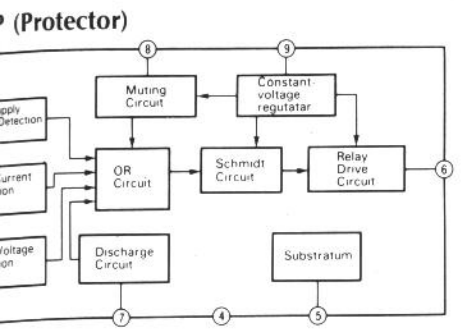
- 2SK163K2
- 2SC1845(F,E)
- 2SA992(F,E)
- 2SC3851(O,Y)
- 2SA1488(O,Y)



⚠ is Safety Part.
 Use only replacement parts recommended by the manufacturer.

Each D.C. Voltage shows the nominal value in volts of no input signal.

- mZ1 IMPEDANCE SELECTOR
 1 A, B 6~16Ω A+B 16Ω
 2 A, B 4~6Ω A+B 8~12Ω



— Signal Line (HOT Amp.)
 — Signal Line (COLD Amp.)
 - - - N.F.B. Line

1

2

3

4

5

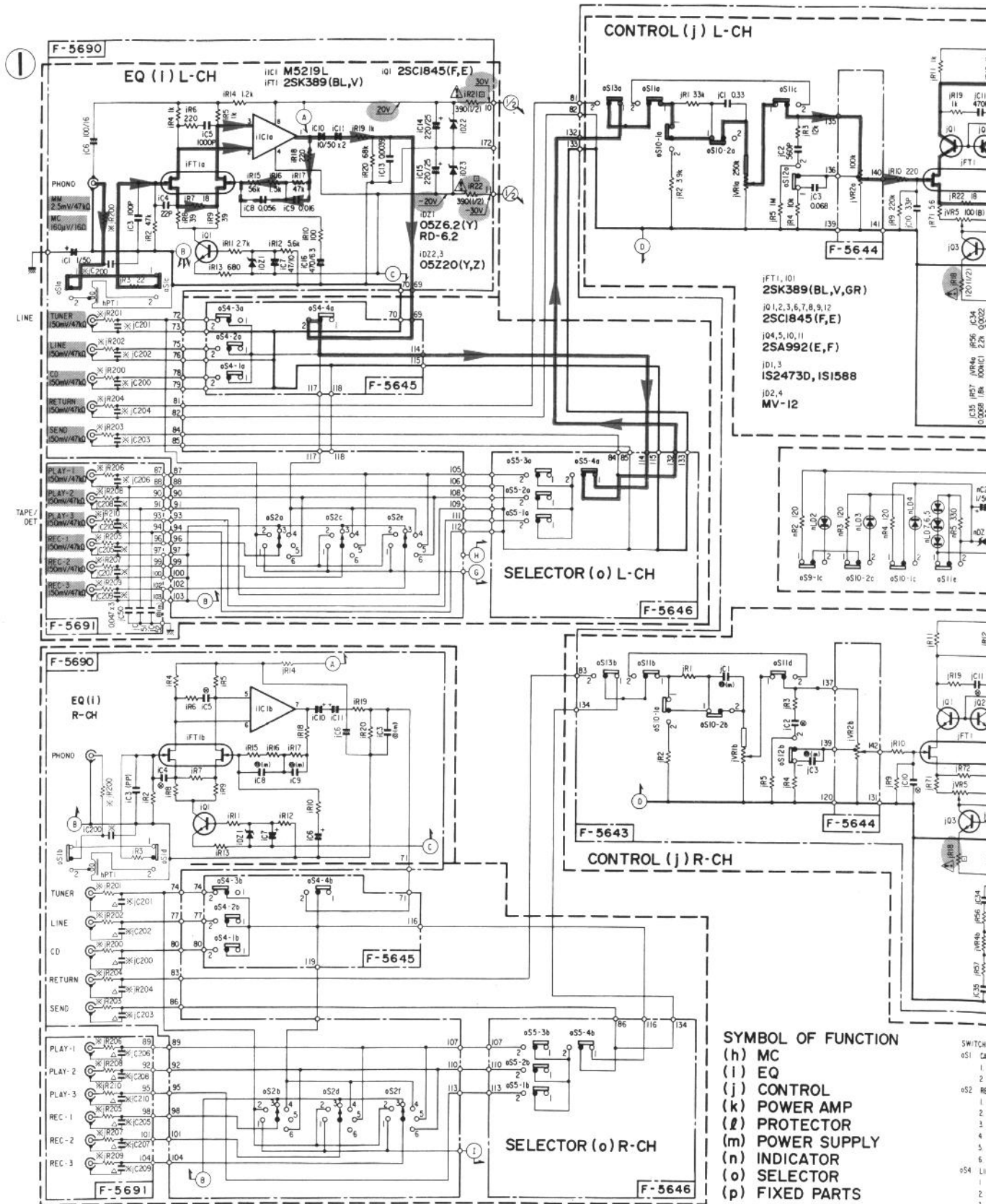
A

B

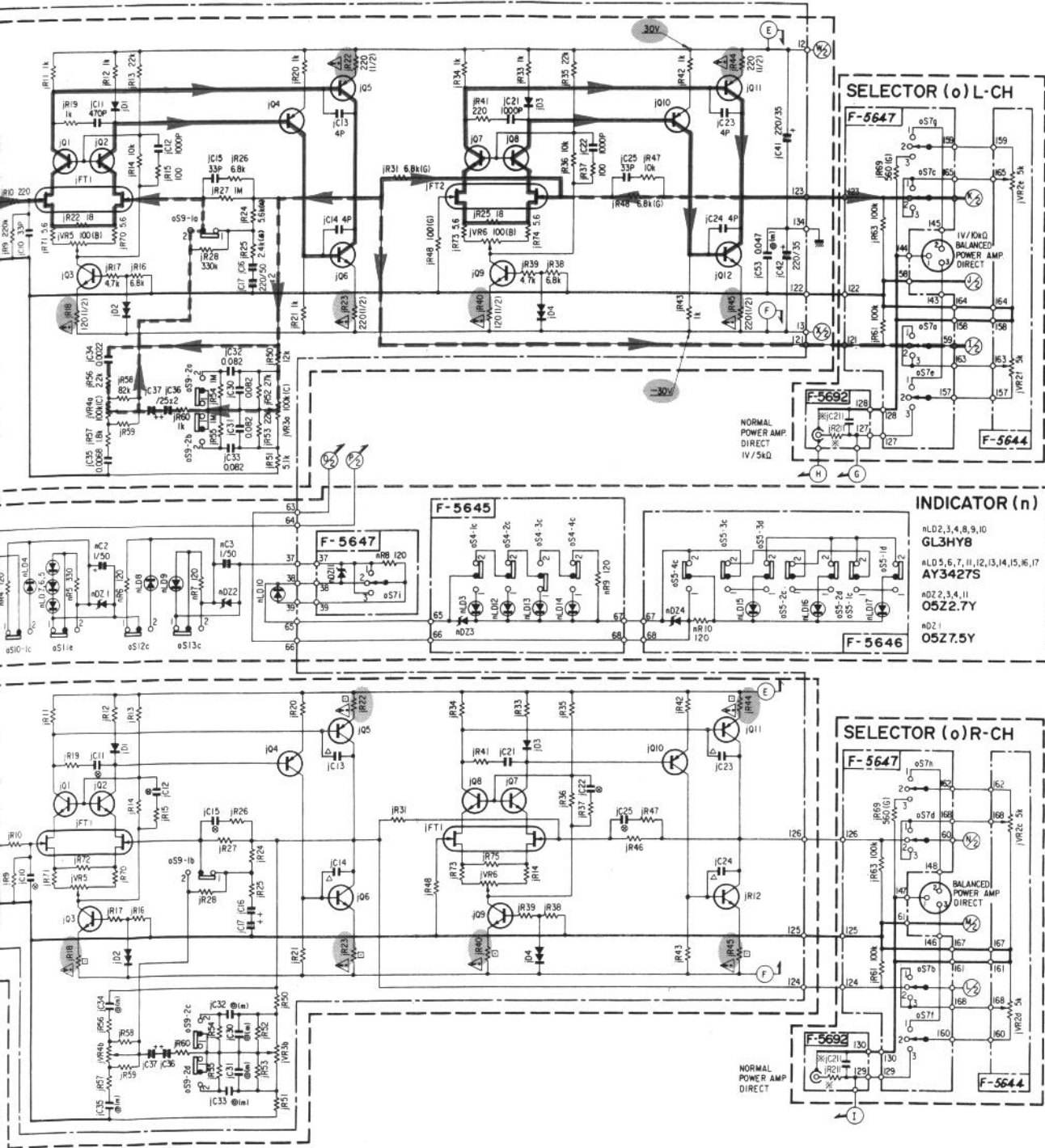
C

D

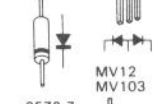
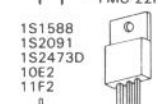
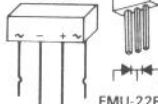
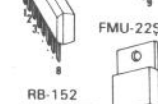
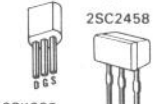
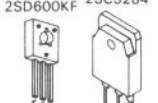
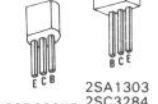
6-4. EQ Amp & Control Amp Section <AU-X901>



* Design and specifications subject to change without notice for improvement.
 * La présentation et les spécifications sont susceptibles d'être modifiées sans préavis par suites d'améliorations éventuelles.
 * Änderungen, die dem technischen Fortschritt dienen, bleiben vorbehalten.



- 2SA992
- 2SA1049
- 2SA1145
- 2SC1815
- 2SC1845
- 2SC2705



1

2

3

4

5

- SWITCHES**
- oS1 CARTRIDGE SELECTOR
 - 1. MM
 - 2. MC
 - oS2 REC SELECTOR
 - 1. DIRECT (NORMAL)
 - 2. TUNER
 - 3. OFF
 - 4. SOURCE
 - 5. 1-2,3
 - 6. 2-1,3
 - oS4 LINE SELECTOR
 - 1. CD
 - 2. LINE
 - 3. TUNER
 - 4. PHONO
 - oS5 TAPE SELECTOR
 - 1. TAPE 3
 - 2. TAPE 2
 - 3. TAPE 1
 - 4. TAPE / LINE
 - oS7 POWER AMP DIRECT OPERATION
 - 1. BALANCED
 - 2. INTEGRATED
 - 3. NORMAL
 - oS9-1 TONE
 - 1. OFF
 - 2. ON
 - oS9-2 TURNOVER
 - 1. 75Hz
 - 2. 150Hz

- oS10-1 MUTING
 - 1. OFF
 - 2. ON
- oS10-2 SUBSONIC
 - 1. OFF
 - 2. ON
- oS11 SOURCE DIRECT
 - 1. OFF
 - 2. ON
- oS12 LOUDNESS
 - 1. OFF
 - 2. ON
- oS13 PROCESSOR
 - 1. OFF
 - 2. ON

- oS14-1 MUTE
- oS14-2 SUBSONIC
- oS14-3
- oS14-4
- oS14-5
- oS14-6
- oS14-7
- oS14-8
- oS14-9
- oS14-10
- oS14-11
- oS14-12
- oS14-13
- oS14-14
- oS14-15
- oS14-16
- oS14-17
- oS14-18
- oS14-19
- oS14-20
- oS14-21
- oS14-22
- oS14-23
- oS14-24
- oS14-25
- oS14-26
- oS14-27
- oS14-28
- oS14-29
- oS14-30
- oS14-31
- oS14-32
- oS14-33
- oS14-34
- oS14-35
- oS14-36
- oS14-37
- oS14-38
- oS14-39
- oS14-40
- oS14-41
- oS14-42
- oS14-43
- oS14-44
- oS14-45
- oS14-46
- oS14-47
- oS14-48
- oS14-49
- oS14-50
- oS14-51
- oS14-52
- oS14-53
- oS14-54
- oS14-55
- oS14-56
- oS14-57
- oS14-58
- oS14-59
- oS14-60
- oS14-61
- oS14-62
- oS14-63
- oS14-64
- oS14-65
- oS14-66
- oS14-67
- oS14-68
- oS14-69
- oS14-70
- oS14-71
- oS14-72
- oS14-73
- oS14-74
- oS14-75
- oS14-76
- oS14-77
- oS14-78
- oS14-79
- oS14-80
- oS14-81
- oS14-82
- oS14-83
- oS14-84
- oS14-85
- oS14-86
- oS14-87
- oS14-88
- oS14-89
- oS14-90
- oS14-91
- oS14-92
- oS14-93
- oS14-94
- oS14-95
- oS14-96
- oS14-97
- oS14-98
- oS14-99
- oS14-100

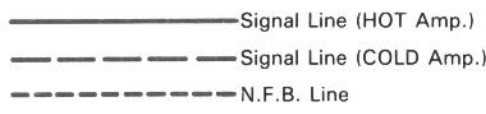
- SYMBOL**
- △ Ceramic
 - Mylor
 - Polystyrene
 - ⊙ Polypropylene film
 - Non-Inductive Resistor
 - ⚠ Safety Part. Use only replacement parts recommended by the manufacturer. * FTZ MODEL only

- RESISTORS**
- Are in ohms, 1/4 Watts, ±5% Tolerance
 Unless Otherwise Noted k Ω, M, MD

- TOLERANCE**
- G ± 2%

- CAPACITORS**
- Are in μF, Unless Otherwise Noted P pF

- ELECTROLYTIC CAPACITORS**
- Capacitance μF/Volts(V)



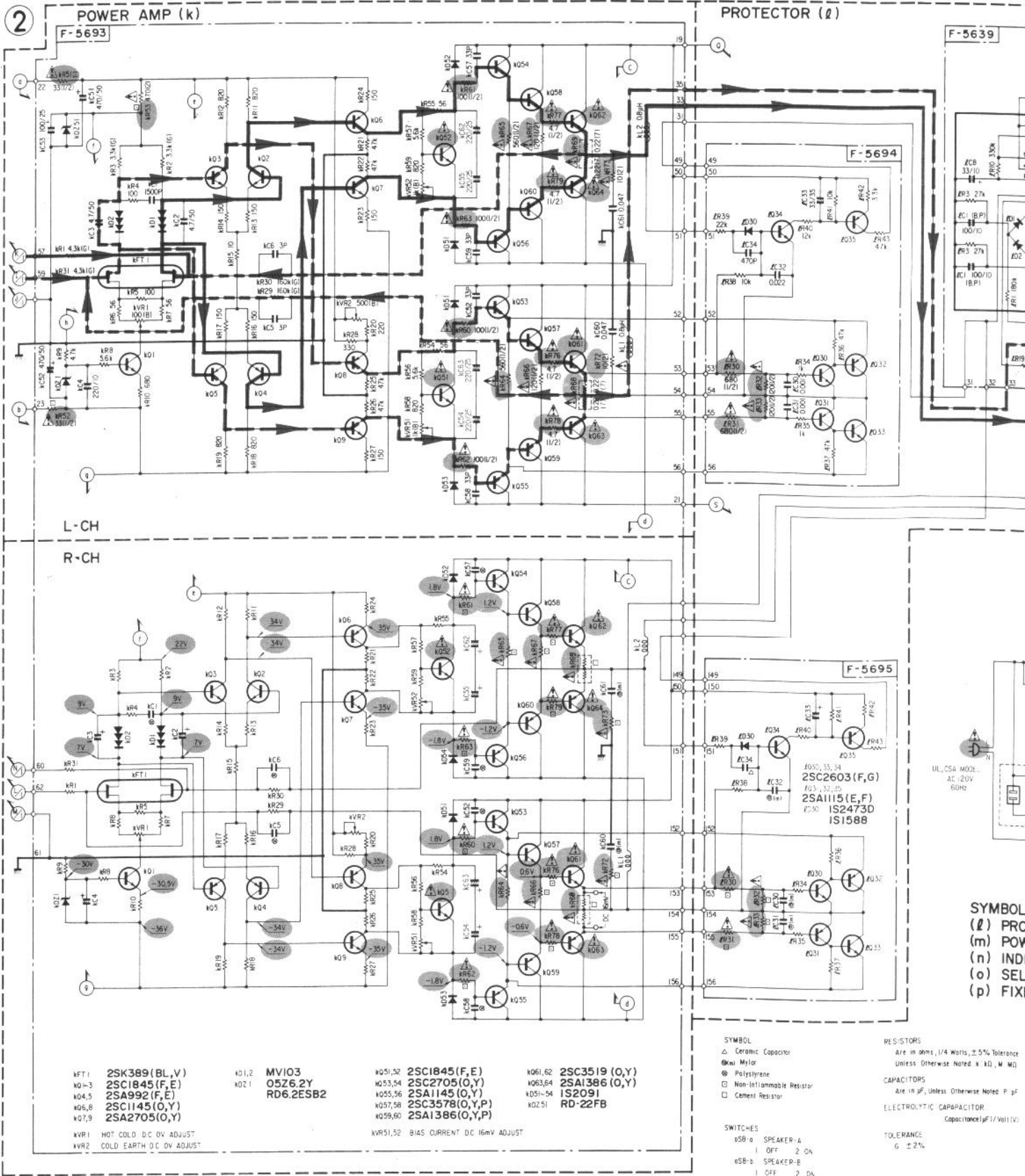
A

B

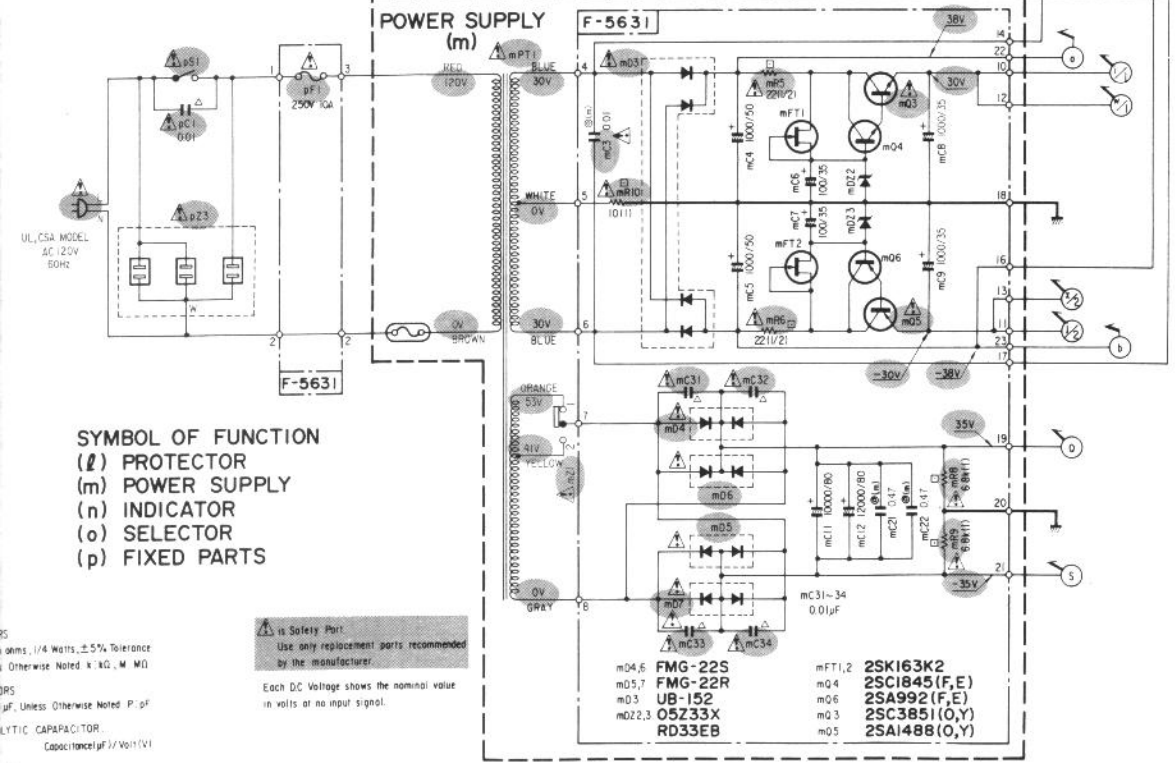
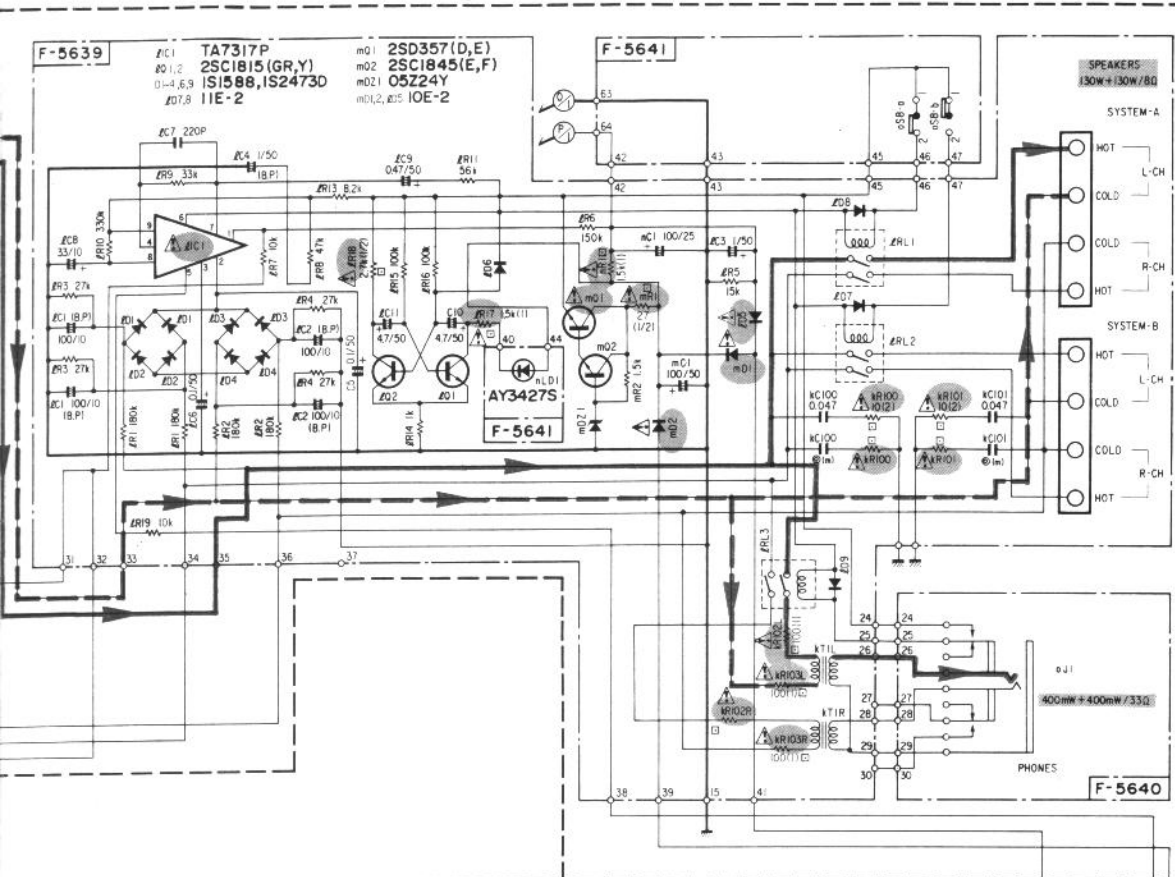
C

D

6-5. Power Amp & Power Section <AU-X901>



• Design and specifications subject to change without notice for improvement.
 • La présentation et les spécifications sont susceptibles d'être modifiées sans préavis par suites d'améliorations éventuelles.
 • Änderungen, die dem technischen Fortschritt dienen, bleiben vorbehalten.

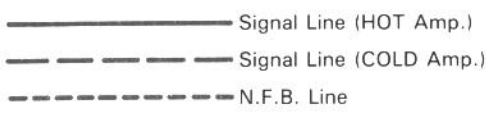


SYMBOL OF FUNCTION
 (l) PROTECTOR
 (m) POWER SUPPLY
 (n) INDICATOR
 (o) SELECTOR
 (p) CHOICE PARTS

Safety Part
 Use only replacement parts recommended by the manufacturer.
 Each DC Voltage shows the nominal value in volts at no input signal.

0.5 ohms, 1/4 Watts, ±5% Tolerance
 Otherwise Noted k (K), M (M)
 μF, Unless Otherwise Noted P (P)
 CAPACITOR
 Capacitance μF/Volt (V)

- 2SA992
- 2SA1049
- 2SA1145
- 2SC1815
- 2SC1845
- 2SC2705
- 2SD357
- 2SA1438
- 2SC3851
- 2SA1115
- 2SC2459
- 2SC2603
- 2SK163
- 2SA1386
- 2SC3519
- 2SK389
- 2SA1306
- 2SC3298
- TA7317P
- MS219L
- FMG-22S
- UB 152LFF
- FMG-22R
- 1S1588
- 1S2091
- 1S2473D
- 10E2
- 11E2
- MV12
- MV103
- 0522.7
- 0526.2
- 0527.5
- 05220
- 05224
- 05233
- RD6.2E
- RD22E



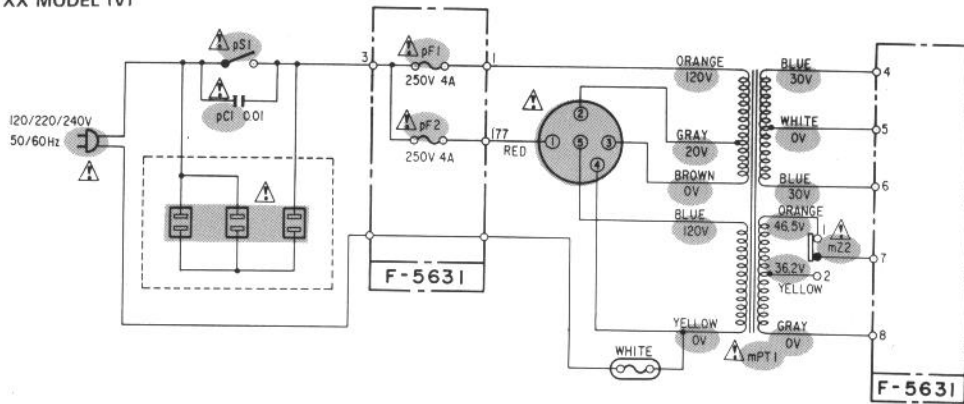
1
2
3
4
5

6-6. Power Supply (Primary Side) Section <AU-X701>

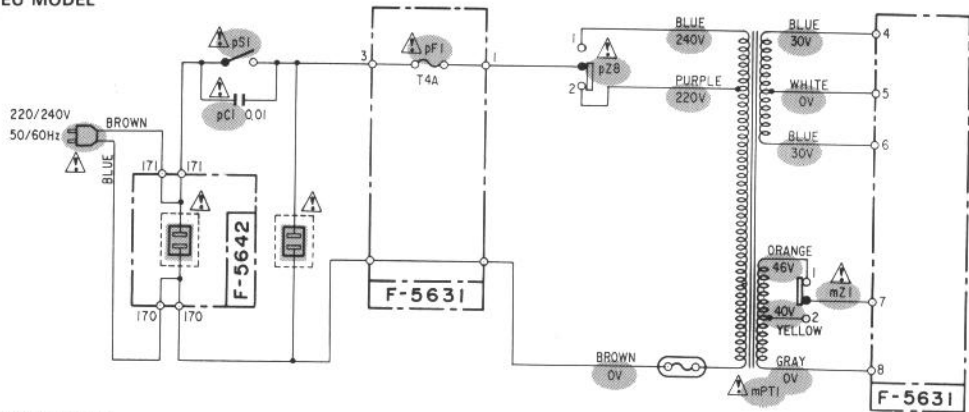
•AU-X701

④

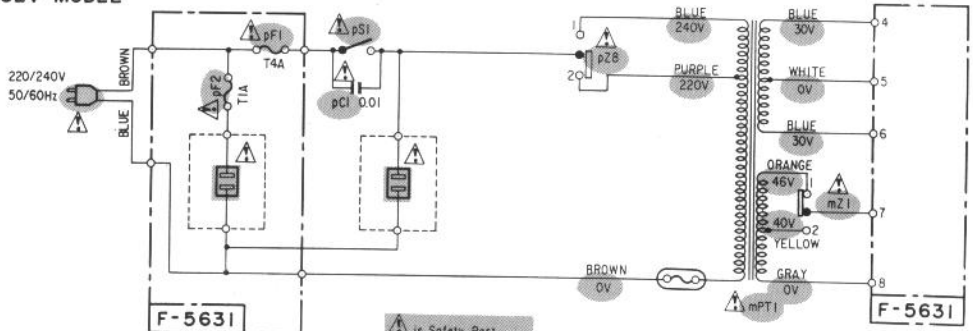
XX MODEL (V)



EU MODEL



SEV MODEL



- pZ8 VOLTAGE SELECTOR
1. 240V 2. 220V
- mZ1 SPEAKER IMPEADANCE SELECTOR
1. A+B 8~12Ω, A,B 4~16Ω
2. A+B 16Ω, A,B 8~16Ω

⚠ is Safety Part
Use only replacement parts recommended by the manufacturer.

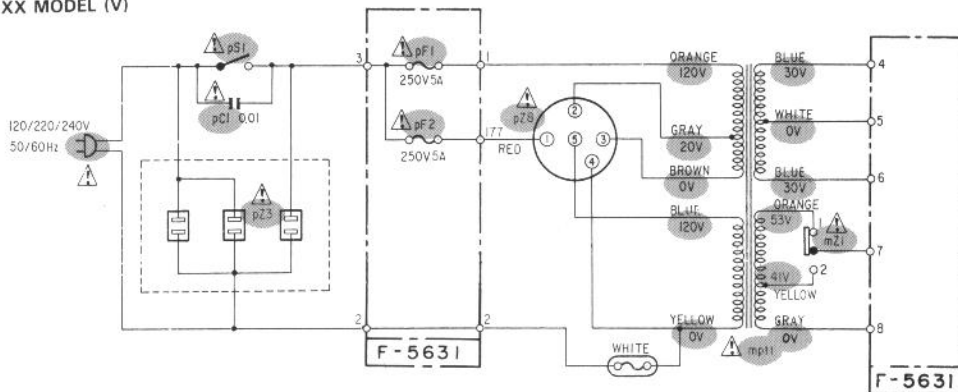
* Design and specifications subject to change without notice for improvement.
 * La présentation et les spécifications sont susceptibles d'être modifiées sans préavis par suites d'améliorations éventuelles.
 * Änderungen, die dem technischen Fortschritt dienen, bleiben vorbehalten.

6-7. Power Supply (Primary Side) Section <AU-X901>

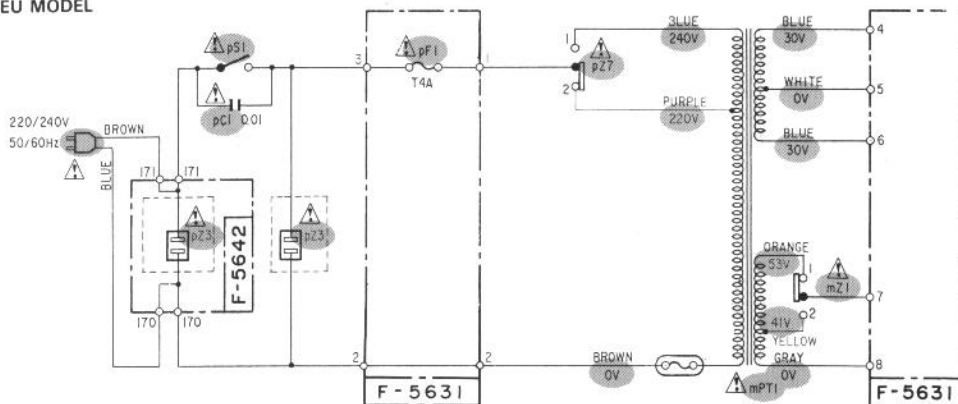
•AU-X901

③

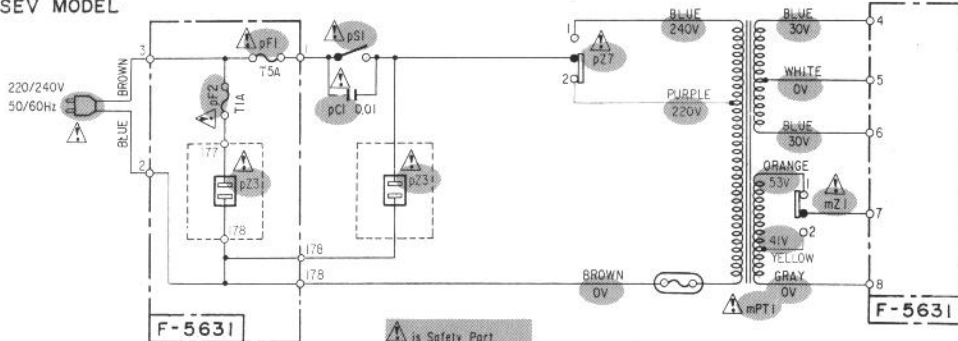
XX MODEL (V)



EU MODEL



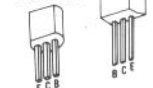
SEV MODEL



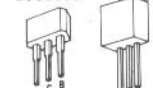
- pZ7 VOLTAGE SELECTOR
 1. 240V 2. 220V
- mZI SPEAKER IMPEADANCE SELECTOR
 1. A or B 8-16Ω A and B 16Ω
 2. A or B 4-6Ω A and B 8-12Ω

⚠ is Safety Part.
 Use only replacement parts recommended by the manufacturer.

- 2SA992
- 2SA1049
- 2SA1145
- 2SC1815
- 2SC1845
- 2SC2705



- 2SA1115
- 2SC2459
- 2SC2603



- 2SK163
- 2SA1386
- 2SC3519



- 2SK389
- 2SA1306
- 2SC3298



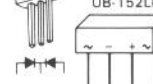
- TA7317P
- M5219L



- FMG-22S
- UB-152LFF



- FMG-22R
- 1S1588
- 1S2091
- 1S2473D
- 10E2
- 11E2



- MV12
- MV103



- 05Z2.7
- 05Z6.2
- 05Z7.5
- 05Z20
- 05Z24
- 05Z33
- RD6.2E
- RD22F



- 05Z2.7
- 05Z6.2
- 05Z7.5
- 05Z20
- 05Z24
- 05Z33
- RD6.2E
- RD22F



1

2

3

4

5

7. ADJUSTMENT

Condition: 1. Master Volume Minimum
 2. Room Temperature 18°C ~ 28°C (65°F ~ 83°F)

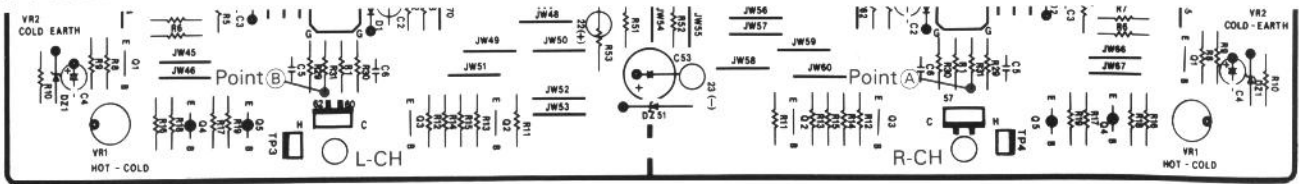
7-1. F-5693 Power Amp. Adjustment

STEP	SUBJECT	MEASURE OUTPUT	ADJUST	ADJUST FOR	REMARKS
1.	Center DC 0V Adj. <L-ch>	DC Voltage between Speaker Terminals COLD and GND <L-ch>	kVR2L	DC 0V ± 3 mV	<ul style="list-style-type: none"> •Set Speaker-A switch to "ON". •Set the POWER AMP DIRECT <AU-X901> switch to normal position.
2.	Center DC 0V Adj. <R-ch>	DC Voltage between Speaker Terminals COLD and GND <R-ch>	kVR2R	DC 0V ± 3 mV	
3.	Hot/Cold Balance Adj. <L-ch>	DC Voltage between Speaker Terminal HOT and GND. <L-ch>	kVR1L	DC 0V ± 3 mV	
4.	Hot/Cold Balance Adj. <R-ch>	DC Voltage between Speaker Terminal HOT and GND. <R-ch>	kVR1R	DC 0V ± 3 mV	

7-2. F-5643 Tone Control Amp. Adjustment <AU-X901>

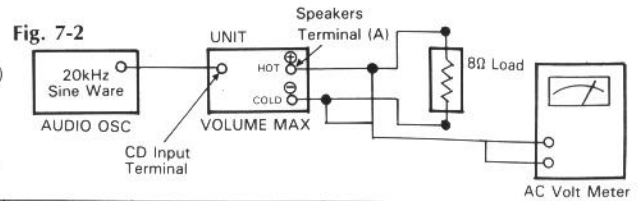
STEP	SUBJECT	MEASURE OUTPUT	ADJUST	ADJUST FOR	REMARKS
1.	Center DC 0V Adj. <L-ch>	DC Voltage between F-5693 Point(A) (kR31) and Chassis (See Fig. 7-1)	jVR5L	DC 0V ± 3 mV	<ul style="list-style-type: none"> •For this adjustment, remove the front panel. •Set the POWER AMP DIRECT switch to integrated position. •Set Speaker-A switch to "ON".
2.	Center DC 0V Adj. <R-ch>	DC Voltage between F-5693 Point(B) (kR31) and Chassis (See Fig. 7-1)	jVR5R	DC 0V ± 3 mV	
3.	Hot/Cold Balance Adj. <L-ch>	DC Voltage between Speaker Terminals HOT and GND. <L-ch>	jVR6L	DC 0V ± 3 mV	
4.	Hot/Cold Balance Adj. <R-ch>	DC Voltage between Speaker Terminals HOT and GND. <R-ch>	jVR6R	DC 0V ± 3 mV	

Fig. 7-1 F-5693



7-3. F-5693 Power Amp. Adjustment

- Note:** Perform this adjustment after the preheating (more than five minutes)
 - ***Preheating**
1. Arrange the connection as shown in Fig. 7-2.
 2. Set the output level of Audio OSC for obtaining 16.8V (35W) <AU-X701> or 20.6V (53W) <AU-X901> on the AC Volt Meter.
 3. Set the Volume to minimum position after the preheating.



STEP	SUBJECT	MEASURE OUTPUT	ADJUST	ADJUST FOR	REMARKS
1.	Bias Current Adj. <Hot Side Amp. of L-ch>	DC Voltage between both edges of kR69 <L-ch> (See Fig. 7-3)	kVR52L	DC 17mV ± 2 mV	<ul style="list-style-type: none"> •Set the POWER AMP DIRECT <AU-X901> switch to normal position. •After this adjustment position (Bias Current), repeat procedures as stated in 7-1 & 7-2.
2.	Bias Current Adj. <Cold Side Amp. of L-ch>	DC Voltage between both edges of kR68 <L-ch> (See Fig. 7-3)	kVR51L	DC 17mV ± 2 mV	
3.	Bias Current Adj. <Hot Side Amp. of R-ch>	DC Voltage between both edges of kR69 <R-ch> (See Fig. 7-3)	kVR52R	DC 17mV ± 2 mV	
4.	Bias Current Adj. <Cold Side Amp. of R-ch>	DC Voltage between both edges of kR68 <R-ch> (See Fig. 7-3)	kVR51R	DC 17mV ± 2 mV	

Fig. 7-3 F-5693

