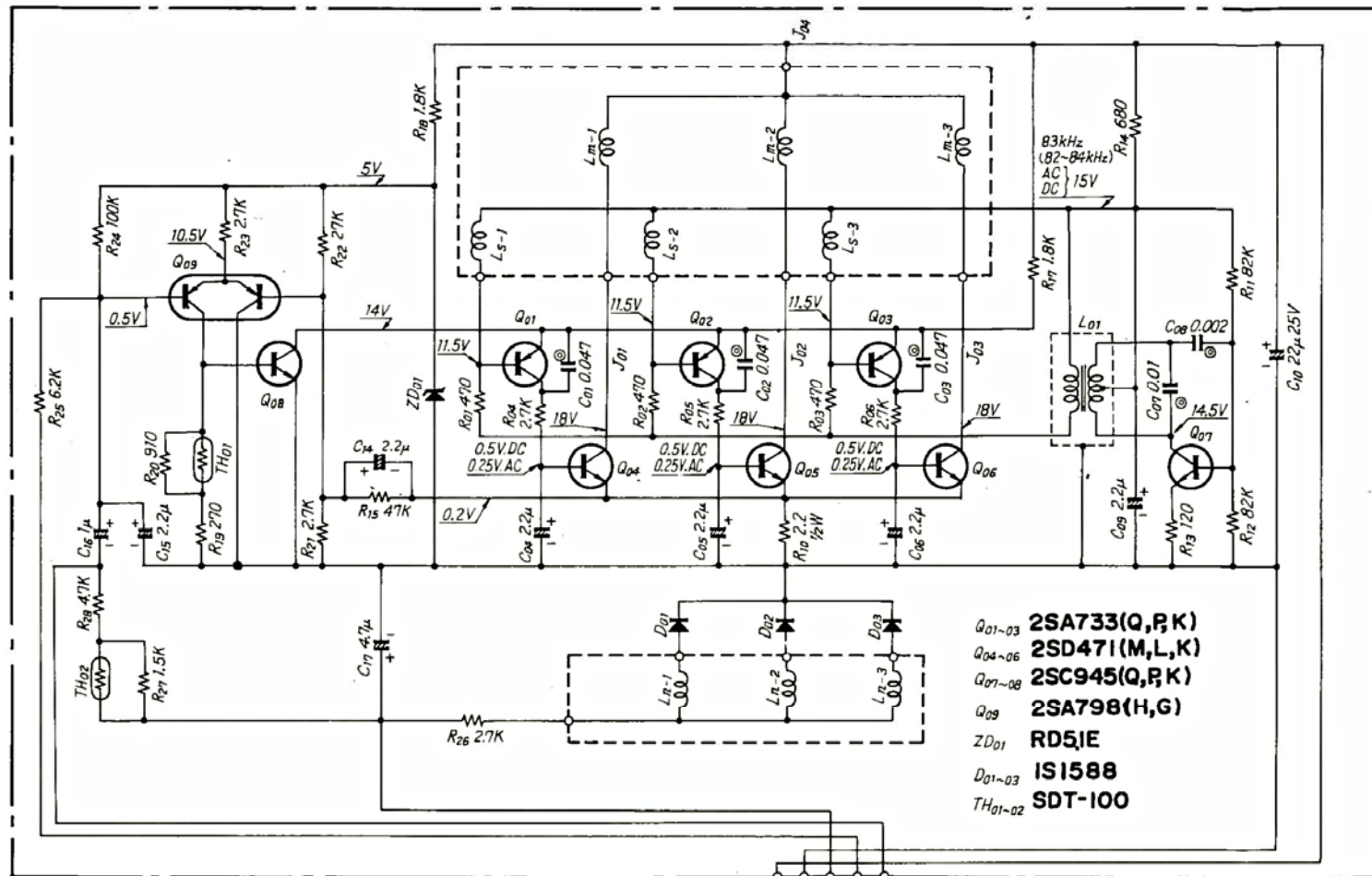
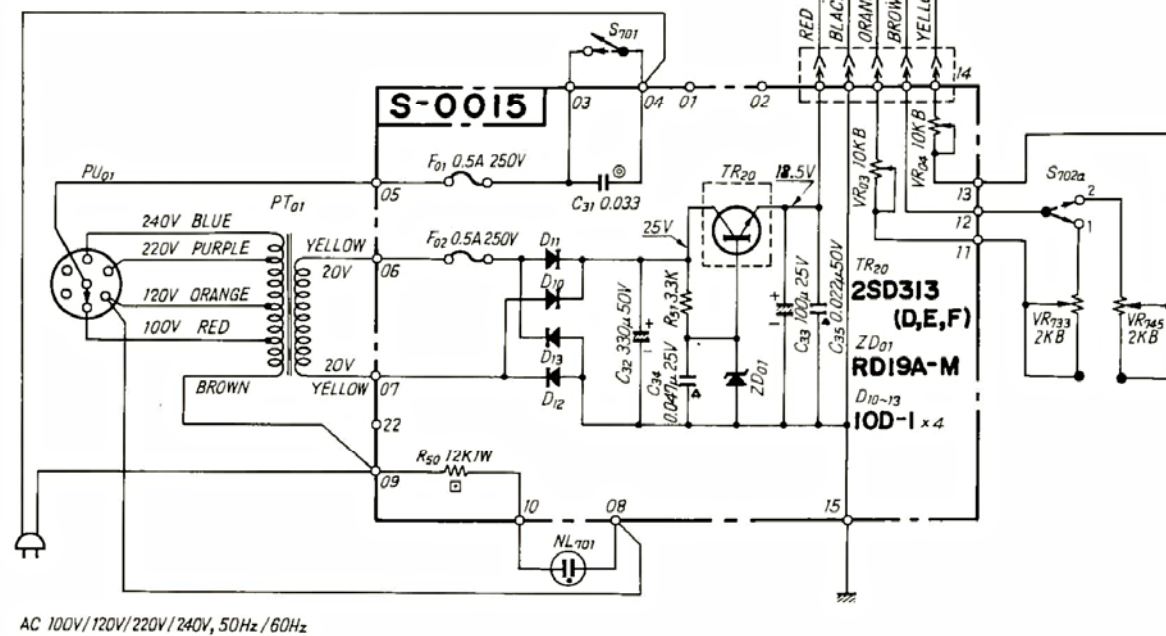
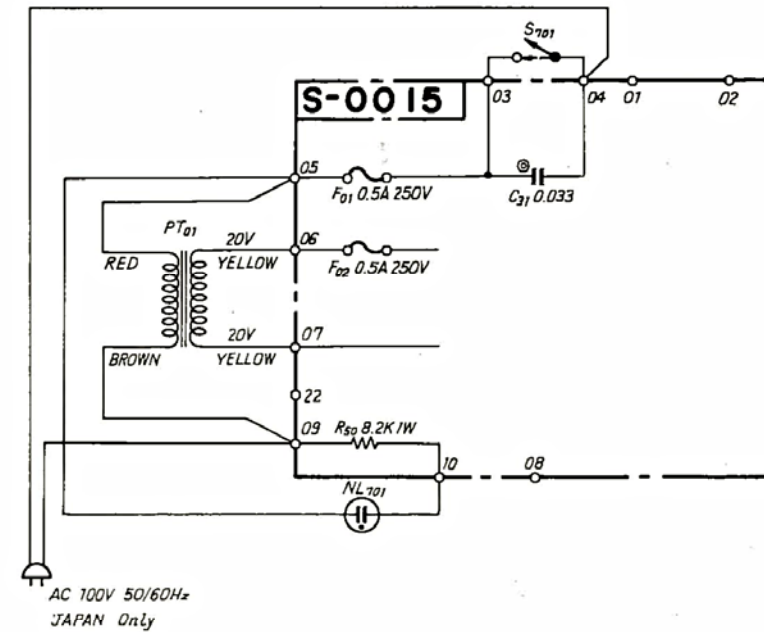


SANSUI SR-535 SCHEMATIC DIAGRAM

• La présentation et les spécifications sont susceptibles d'être modifiées sans préavis par suites d'améliorations éventuelles.
 • Änderungen, die dem technischen Fortschritt dienen, bleiben vorbehalten.
 • Design and specifications subject to change without notice for improvement.
 • 改良のため、予告なく変更、仕様の一部を変更することがあります。



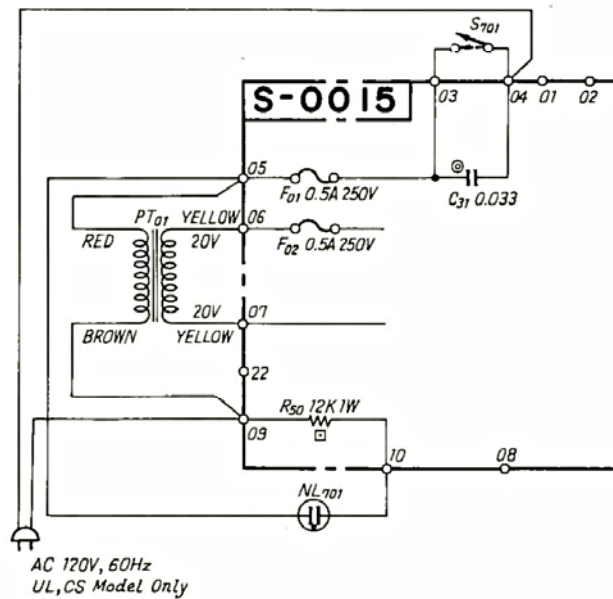
- Q₀₁₋₀₃ 2SA733(Q,R,K)
- Q₀₄₋₀₆ 2SD471(M,L,K)
- Q₀₇₋₀₈ 2SC945(Q,R,K)
- Q₀₉ 2SA798(H,G)
- ZD₀₁ RD51E
- D₀₁₋₀₃ IS1588
- TH₀₁₋₀₂ SDT-100



AC 100V/120V/220V/240V, 50Hz/60Hz

CAPACITOR SYMBOL
 ○ MYLAR
 △ CERAMIC
 RESISTOR: ALL RESISTORS 1/4 WATTS
 UNLESS OTHERWISE NOTED
 THERMISTOR NON INFLAMMABLE RESISTOR

S₇₀₁ POWER SW
 S₇₀₂ (a-c) SPEED SELECTOR & POWER SW
 1. 33 1/3 r.p.m. 2. 45 r.p.m.
 VR₂₃₃ 33 1/3 r.p.m. SPEED ADJ. (FINE)
 VR₂₄₅ 45 r.p.m. SPEED ADJ. (FINE)
 VR₀₃ 33 1/3 r.p.m. SPEED ADJ. (ROUGH)
 VR₀₄ 45 r.p.m. SPEED ADJ. (ROUGH)



AC 120V, 60Hz
 UL, CS Model Only