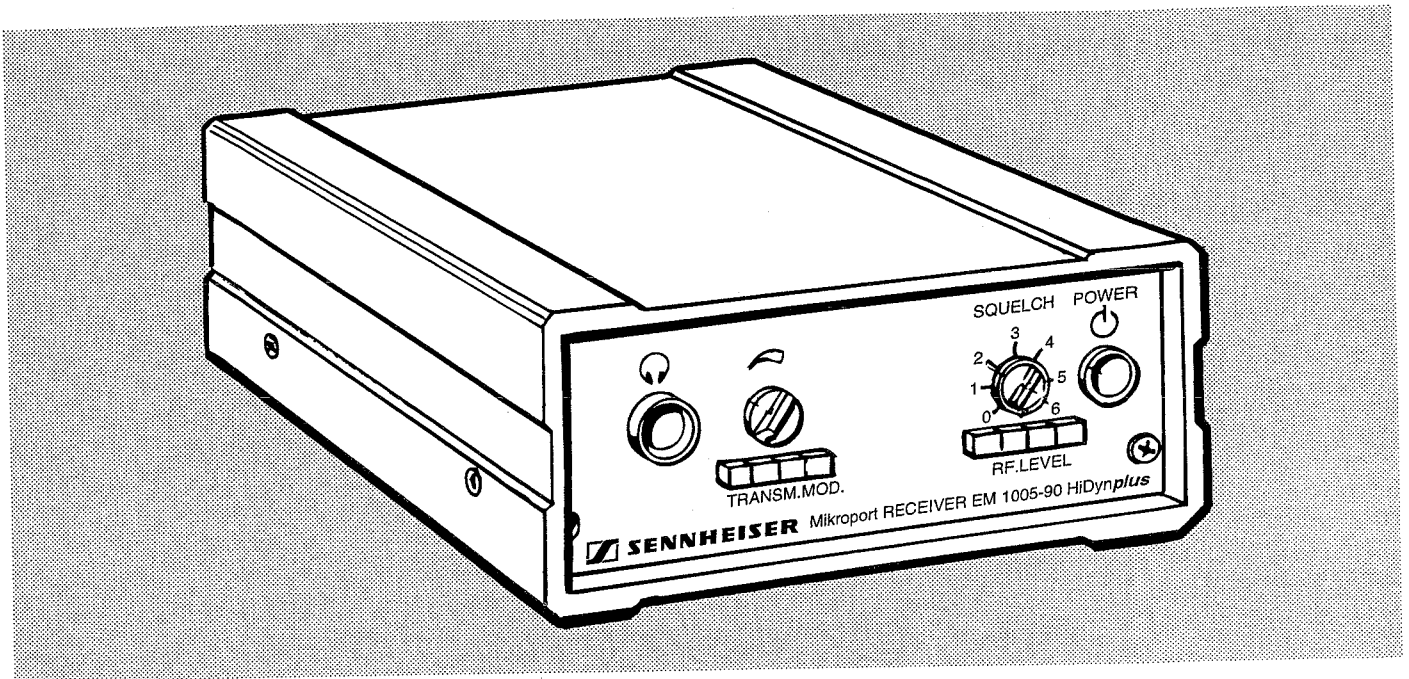


# EM 1005-90

HiDynplus



## Kurzbeschreibung

Der EM 1005-90 ist ein kompakter Hochfrequenzempfänger, der in Verbindung mit den Hochfrequenzsendern SKM 5000 VHF oder SK 50 VHF drahtlose Tonübertragung in hoher Qualität und Übertragungssicherheit gewährleistet.

Seine Merkmale:

- »HiDynplus« Kompaner
- Symmetrischer NF-Ausgang (XLR), Pegel einstellbar
- Kopfhöreranschlußbuchse (Ø 6,3 mm Klinke), Lautstärke einstellbar
- Leuchtdiodenzeilen zur Anzeige der Sendermodulation und Empfangsfeldstärke
- Elektronische Rauschsperr, einstellbar
- Netzbetrieb mit Steckernetzteil NT 1032, Batteriebetrieb 11 - 18 V DC
- Antenne und Steckernetzteil im Lieferumfang
- Anschlußbuchsen für abgesetzte Antennen

## Brief description

The EM 1005-90 is a compact RF receiver which is used in conjunction with the model SKM 5000 VHF or SK 50 VHF transmitter to guarantee high-quality, safe audio transmission.

Its features:

- "HiDynplus" compander
- Symmetrical AF output (XLR), adjustable level
- Headphone jack (Ø 6.3 mm jack), adjustable volume
- Light-emitting diode strips to display transmitter modulation and field strength of reception
- Electronic squelch, adjustable
- Operation from line power with plug-in transformer or batterie operation 11 to 18 V DC
- Antenna and plug-in transformer included as standard accessory
- Connection jacks for detached antennas

## Sicherheitsvorschriften/Safety requirements/ Prescrizioni de sicurezza / Prescriptions de sécurité / Prescripciones de seguridad

### Deutsch

**Achtung:** Bei Eingriffen in das Gerät sind die Sicherheitsvorschriften nach VDE 701 (reparaturbezogen) bzw. VDE 0860 / IEC 65 (gerätebezogen) zu beachten !

Bauteile nach IEC- bzw. VDE-Richtlinien ! Im Ersatzfall nur Teile mit gleicher Spezifikation verwenden !



**MOS** - Vorschriften beim Umgang mit MOS - Bauteilen beachten !

### English

**Attention:** Please observe the applicable safety requirements according to VDE 701 (concerning repairs) and VDE0860 / IEC 65 (concerning type of product) !

Components to IEC or VDE guidelines ! Only use components with the same specifications for replacement !



Observe **MOS** components handling instructions when servicing !

### italiano

**Attenzione:** Osservare le corrispondenti prescrizioni di sicurezza VDE 701 (concernente servizio) e VDE 0860 / IEC 65 (concernente il tipo di prodotto) !

Componenti secondo le norme VDE risp. te IEC ! In caso di sostituzione impiegare solo componenti con le stesse caratteristiche.



Osservare le relative prescrizioni durante, lavori con componenti **MOS** !

### Français

**Attention:** Priere d'observer les prescriptions de sécurité VDE701 (concernant les reparations) et VDE 0860 / IEC 65 (concernant le type de produit) !

Composants répondant aux normes VDE ou IEC. Les remplacer uniquement par des composants ayant les memes spécifications.



Lors de la manipulation des circuits **MOS**, respecter les prescriptions MOS !

### Español

**Atención:** Recomendamos las normas de seguridad VDE u otras normas equivalentes, por ejemplo: VDE 701 para reparaciones, VDE 0860 / IEC 65 para aparatos !

Componentes que cumplen las normas VDE / IEC. En caso de sustitución, emplear componentes con idénticas especificaciones !



Durante la reparacion observar las normas sobre componentes **MOS** !

### USA & Canada

**Attention:** This set can only be operated from AC mains of 120V / 60Hz. Also observe the information given on the rear of the set !

CAUTION: For continued protection against risk of fire replace only with same type fuses!  
CAUTION: To reduce the risk of electric shock, do not remove cover (or back), no user-serviceable parts inside, refer servicing to qualified service personnel.



Components to safety guidelines (IEC / U.L.) ! Only use components with the same specifications for replacement !

Observe by checking leakage-current or resistance measurement that the exposed parts are acceptably insulated from the supply circuit.



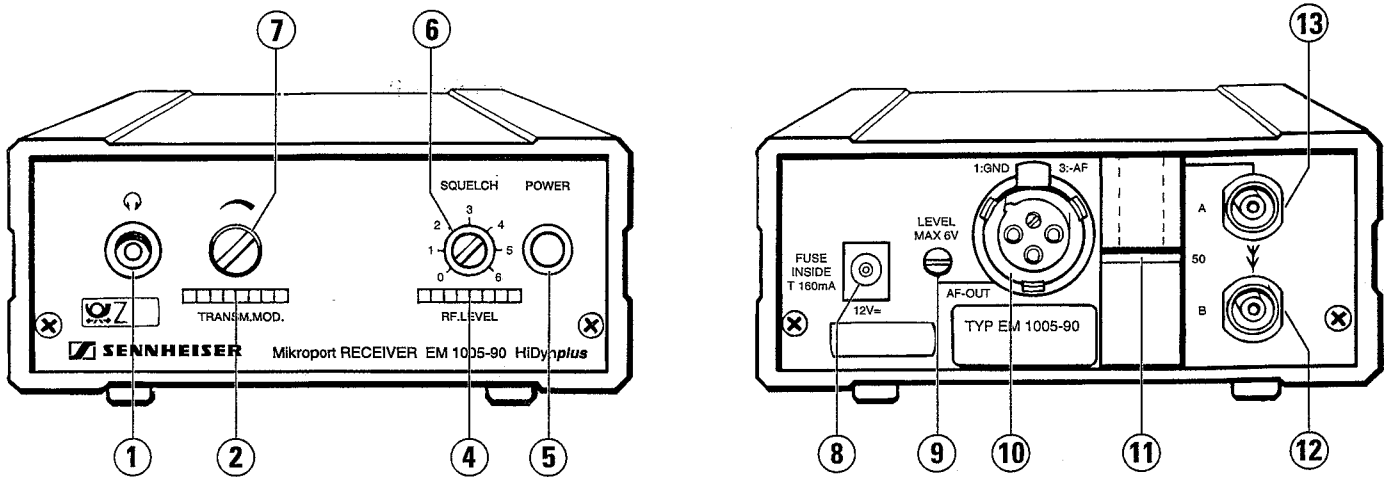
Observe **MOS** components handling instructions when servicing !

## Inhaltsverzeichnis/Contents

## Seite/Page

|     |  |    |
|-----|--|----|
| 1.  | Bedienungselemente<br>Operating elements   | 4  |
| 2.  | Technische Daten<br>Technical Data   | 5  |
| 3.  | Blockschaltbild<br>Block diagram   | 6  |
| 4.  | Service Hinweise<br>Service hints  | 6  |
| 5.  | Erforderliche Meßgeräte und Prüfmittel<br>Measuring instruments and test equipment | 7  |
| 6.  | Meßaufbau<br>Test set-up   | 7  |
| 7.  | Prüf- und Abgleichanweisung<br>Test and alignment instructions                     | 8  |
| 8.  | Stromlaufplan<br>Circuit diagram   | 11 |
| 9.  | Gedruckte Schaltung<br>Printed circuit board                                       | 12 |
| 10. | Explosionszeichnung<br>Exploded view   | 13 |
| 11. | Ersatzteile<br>Spare parts   | 14 |

## 1. Bedienungselemente Operating elements



### Bedienungselemente

- 1 Kopfhörerausgang (6,3mm Ø) für Mono/Stereo-Kopfhörer. Min. Last  $\geq 50$  Ohm
- 2 Modulationsanzeige
- 4 Betriebsanzeige/HF-Anzeige (Rot = Kein Empfang; Gelb = Schwacher Empfang; Grün = Guter Empfang)
- 5 Betriebsschalter (Ein/Aus)
- 6 Einsteller für Rauschsperré. Einstellbereich: 0 bis 100  $\mu\text{V}$
- 7 Lautstärkeeinsteller für Kopfhörerbuchse
- 8 Buchse für externe Gleichspannungsquellen 11 - 18V
- 9 Einsteller für NF-Ausgangsspannung
- 10 NF-Ausgang, XLR, Ausgangspegel bei Nennhub/Spitzenhub: +12dBm / +18dBm
- 11 Buchse für Teleskopantenne (GZA 1001)
- 12, 13 Eingangsbuchsen für abgesetzte Antennen, BNC. Impedanz: 50 Ohm

### Operating elements

- 1 Headphone output (6.3 mm Ø) for mono/stereo headphone. Min. load  $\geq 50$  ohms
- 2 Modulation display
- 4 Power indicator/RF display (red = no reception; yellow = weak reception; green = good reception)
- 5 Power switch (on/off)
- 6 Squelch control. Adjustment range: 0 to 100  $\mu\text{V}$
- 7 Volume control for headphone jack
- 8 Jack for external direct voltage sources 11 - 18 V
- 9 AF-output voltage control
- 10 AF-output, XLR. Output level at rated/peak swing: + 12 dBm/+ 18 dBm
- 11 Jack for GZA 1001 telescopic antenna
- 12, 13 Input jacks for detached antennas, BNC. Impedance: 50 ohms

## 2. Technische Daten

|   |   |
|---|---|
| Empfangsfrequenz  | Eine Frequenz im Bereich von 138 - 250 MHz  |
| Nennhub/Spitzenhub  | $\pm 40$ kHz / $\pm 56$ kHz   |
| Nachbarkanalselektion bei Verstimmung von 400 / 40 kHz (2-Sender Methode)                                   | $> 70$ dB   |
| Interkanalmodulationsdämpfung bezogen auf S/N = 26 dB, Trägerabstand 400 kHz und 800 kHz (2 Sender-Methode) | $> 60$ dB   |
| ZF Selektion  | $> 80$ dB   |
| Spiegelselektion  | $> 70$ dB   |
| HF-Eingänge   | a. Buchse für Antenne GZA 1001<br>b. BNC-Buchsen, unsymmetrisch; 50 $\Omega$<br>XLR Stecker; erdfrei, symmetrisch, einstellbar; Nennbelastung: 600 $\Omega$ |
| NF-Ausgang  | 15 mV - 3,1 V, einstellbar  |
| NF-Ausgangsspannung bei Nennhub, 1 kHz, und mehr als 1,5 $\mu$ V HF-Spannung                                | $\varnothing$ 6,3 mm Klinke, unsymmetrisch, einstellbar; Nennbelastung $\geq 50$ $\Omega$   |
| Kopfhörerausgang  | 0 V - 3 V, einstellbar  |
| NF Ausgangsspannung am Kopfhörerausgang bei Nennhub, 1 kHz und mehr als 1,5 $\mu$ V HF-Spannung             | 20 - 22000 Hz   |
| Tonfrequenzbereich  | $\leq 1\%$  |
| Klirrfaktor bei Nennhub, 1 kHz und 1 mV HF-Spannung   | 50 $\mu$ s  |
| Deemphasis  | $\geq 60$ dB A  |
| Signal-Rauschabstand bei Nennhub und 1,5 $\mu$ V HF Spannung  | $\geq 105$ dB A   |
| 20 $\mu$ V HF Spannung  | 0 - 100 $\mu$ V   |
| Rauschsperre, einstellbar   | 11 - 18 V DC  |
| Stromversorgung (Steckernetzteil)   | ca. 120 mA  |
| Stromaufnahme bei DC-Speisung   | 168 x 120 x 50  |
| Abmessungen in mm   | ca. 800 g   |
| Gewicht   | A 4000 28 AFR   |
| BZT-Prüfnummer  | 1 Empfänger EM 1005-90, 1 Teleskopantenne GZA 1001,   |
| Lieferumfang  | 1 Steckernetzteil NT 1032   |

Änderungen vorbehalten

## 2. Technical data

|   |  |
|---|--|
| Receiving frequency   | One frequency within the range 138 - 250 MHz   |
| Rated/peak swing  | $\pm 40$ kHz / $\pm 56$ kHz  |
| Adjacent channel rejection when mistuned by 400 / 40 kHz (2 transmitter method)                         | $> 70$ dB  |
| Spurious rejection referring to S/N = 26 dB, carrier spacing 400 kHz and 800 kHz (2 transmitter method) | $> 60$ dB  |
| IF selectivity  | $> 80$ dB  |
| Signal-to-image ratio   | $> 70$ dB  |
| RF inputs   | a. Jack for GZA 1001 telescopic antenna<br>b. BNC jacks, unbalanced; 50 ohms<br>XLR plug; floating; balanced; adjustable; rated load: 600 ohms |
| AF output   | 15 mV - 3.1 V, adjustable  |
| AF output voltage at rated swing, 1 kHz, and more than 1.5 $\mu$ V RF voltage                           | 6.3 mm $\varnothing$ jack socket, unbalanced; adjustable; rated load: $\geq 50$ ohms   |
| Headphone output  | 0 mV - 3 V, adjustable   |
| AF output voltage at headphone output at rated swing, 1 kHz and more than 1.5 $\mu$ V RF-voltage        | 20 - 20 000 Hz   |
| Audio frequency range   | $\leq 1\%$   |
| Distortion factor at rated swing, 1 kHz and 1 mV RF voltage   | 50 $\mu$ s   |
| Deemphasis  | $\geq 60$ dB A   |
| Signal-to-noise ratio at rated swing and 1.5 $\mu$ V RF voltage   | $\geq 105$ dB A  |
| 20 $\mu$ V RF voltage   | 0 - 100 $\mu$ V  |
| Squelch, adjustable   | 11 - 18 V DC   |
| Power supply (Plug-in transformer)  | approx. 120 mA   |
| Power input with DC supply  | 168 x 120 x 50   |
| Dimensions in mm  | approx. 800 g  |
| Weight  | 1 EM 1005-90 receiver, 1 GZA 1001 telescopic antenna,  |
| Standard equipment  | 1 NT 1032 plug-in transformer  |

Subject to alterations.



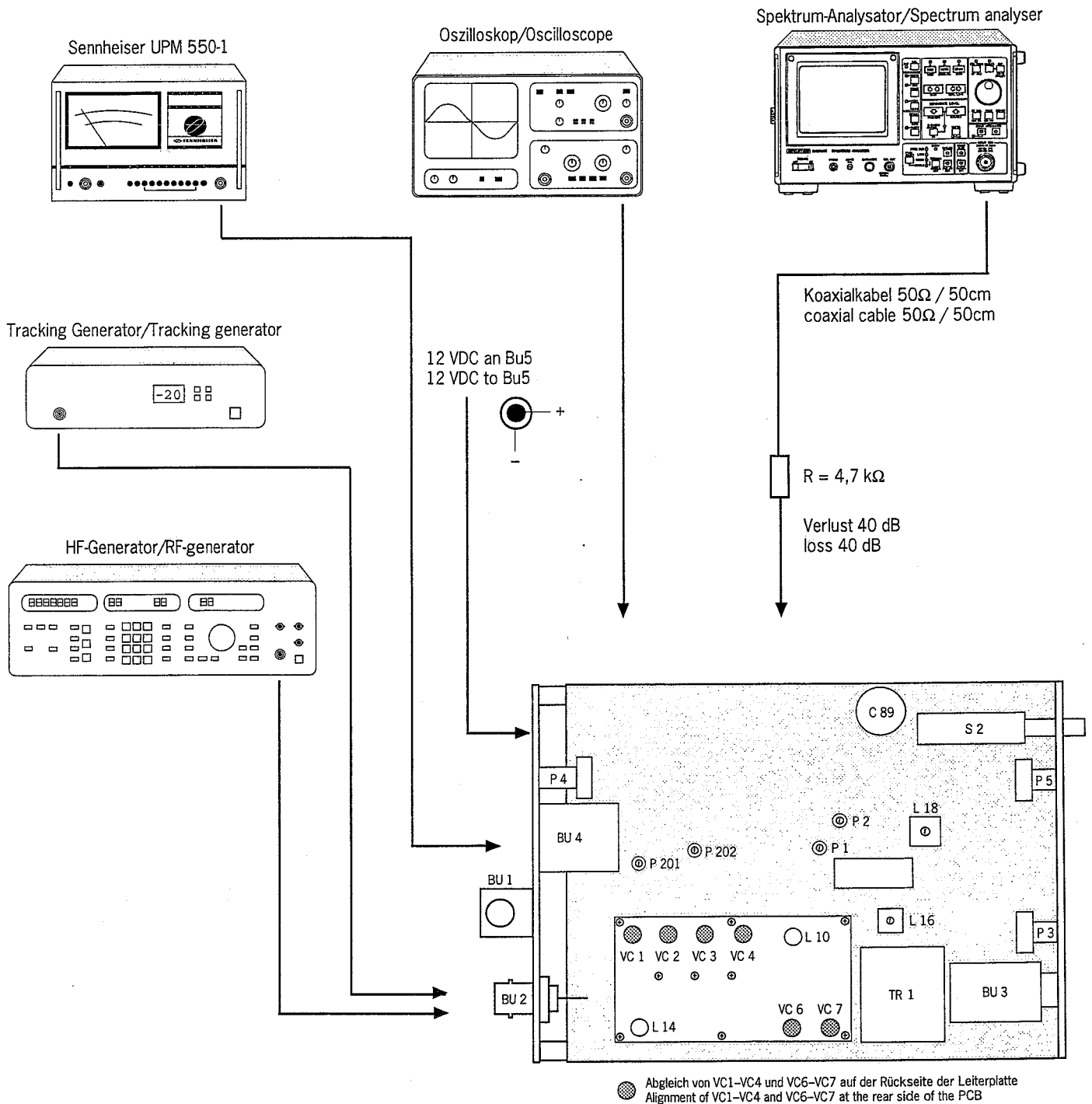
## 5. Erforderliche Meßgeräte und Prüfmittel

- 1 40 dB-Kabel (siehe Meßaufbau)
- 1 Spektrum-Analysator (z. B. Advantest R 4131A)
- 1 Tracking Generator (z. B. Advantest TR 4131A)
- 1 Klirrfaktormesser (z. B. UPM 550-1)
- 1 Fremdspannungsfiler (z. B. UPM 550-1)
- 1 NF-Millivoltmeter (z. B. UPM 550-1)
- 1 Oszilloskop (z. B. Hameg HM 605)
- 1 Meßsender (z. B. Rohde & Schwarz SMS 2)
- 1 Vielfachmeßinstrument (100 k $\Omega$ /V)
- 1 Steckernetzteil NT 1032

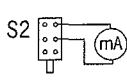
## 5. Measuring instruments and test equipment

- 1 40 dB cable (see test set-up)
- 1 Spectrum analyzer (e. g. Advantest R 4131A)
- 1 Tracking generator (e. g. Advantest TR 4131A)
- 1 THD measuring device (e. g. UPM 550-1)
- 1 Unweighted noise filter (e. g. UPM 550-1)
- 1 AF millivoltmeter (e. g. UPM 550-1)
- 1 Oscilloscope (e. g. Hameg HM 605)
- 1 Test generator (e. g. Rohde & Schwarz SMS 2)
- 1 Multimeter (100 k $\Omega$ /V)
- 1 NT 1032 plug-in transformer

## 6. Meßaufbau/Test set-up

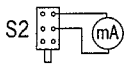


## 7. Prüf - und Abgleichanweisung

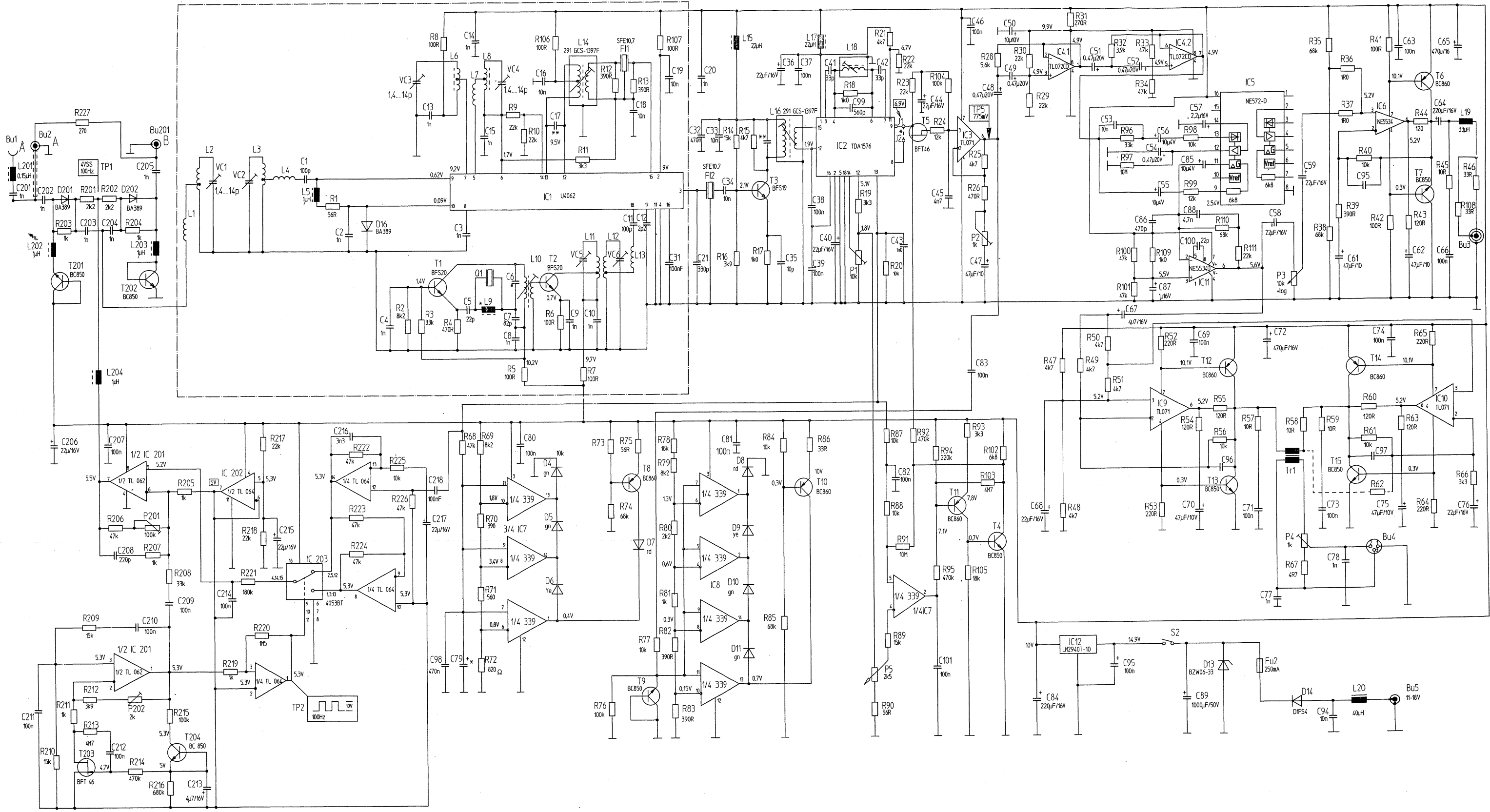
| Nr.  | Messung, Einstellung                      | Signal-einspeisung  | Vorbereitung, Geräte-einstellung   | Meßpunkt  | Sollwert                | Einsteller             | Bemerkungen  |
|------|---|---|------------------------------------|---|-------------------------|------------------------|--|
| 1    | Betriebsspannung                          |   | S2 "Ein"                           | IC2 / Pin 1   | $U=10V \pm 0,5V$        |                        |  |
| 2    | Stromaufnahme, minimal                    |   | S2 "Aus"                           |  | $115mA \pm 15mA$        |                        | S2 mit Amperemeter überbrücken                                       |
| 3    | AAC - Oszillatorfrequenz                  |   | S2 "Ein" Oszilloskop               | TP 2  | $f=100Hz$               | P202                   | Einschwingverhalten durch Ein- und Ausschalten überprüfen            |
| 4    | AAC - Modulationsspannung                 |   | Oszilloskop                        | TP 1  | $U=3,5 V_{ss}$          | P201                   |  |
| 5    | HF - Oszillator                           |   | Spektrum-Analysator                | Basis T2  |                         | L10                    | Einschwingverhalten durch Ein- und Ausschalten überprüfen            |
| 5.1  | Oszillator Filter                         |   | Spektrum-Analysator                | IC1 / Pin18   | max. Amplitude ca. 0dBm | VC5, VC6               |  |
| 6    | HF - Eingangskreise                       | Tracking Generator an Bu2=-30dBm                                | TP 1 auf Masse Spektrum-Analysator | IC1 / Pin5  | $> -20dBm$              | VC1 / VC2<br>VC3 / VC4 |  |
| 7    | ZF - Kreise                               | HF= siehe Typenschild<br>$U=10\mu V$ ,<br>Hub=40kHz,<br>NF=1kHz | UPM 550-1, Oszilloskop             | Bu4   | max. NF                 | L14, L16, L18          | Eingangsspannung stetig verkleinern, max. Empfindlichkeit einstellen |
| 8    | NF - Pegel (HiDyn)                        | HF=1mV<br>Mod.: wie 7.  | UPM 550-1                          | TP 5  | 0dBm / 775mV            | P2                     |  |
| 8.1  | NF - Ausgangspegel                        | wie 8.  | P4 - Rechtsanschlag UPM 550-1      | Bu4   | ca. 3,1Veff             |                        |  |
| 9    | Klirrfaktor                               | wie 8.  | NF an Bu4=775mV UPM 550-1          | Bu4   | $\leq 1\%$              | L18                    | Ausgangspegel an Bu4 beachten  |
| 10   | Fremdspannungsabstand                     | HF=3 $\mu V$<br>Mod.: wie 7.                                    | UPM 550-1                          | Bu4   | $\geq 70 dB A$          |                        |  |
| 10.1 | Fremdspannungsabstand                     | HF=1mV<br>Mod.: wie 7.  | UPM 550-1                          | Bu4   | $\geq 100 dB A$         |                        |  |
| 11   | HF - Pegelanzeige                         | HF=10 $\mu V$<br>Mod.: wie 7.                                   |                                    |   |                         | P1                     | Gelbe LED muß gerade aufleuchten                                     |
| 12   | Rauschsperr                               | HF=2,5 $\mu V$<br>Mod.: wie 7.                                  |                                    |   |                         | P5                     | Rauschsperr setzt ca. bei Squelch Stellung "1" ein                   |
| 13   | Kopfhörer Ausgang                         | HF=1mV<br>Mod.: wie 7.  | UPM 550-1                          | Bu3   | ca. 3,0Veff             |                        |  |
| 14   | AAC - Automatic Antenna Control Eingang B | HF=2,5 $\mu V$<br>Mod.: wie 7.<br>Bu201 (B)                     | Oszilloskop                        | TP 1  | positiver Offset        |                        |  |
| 14.1 | AAC - Automatic Antenna Control Eingang A | HF=2,5 $\mu V$<br>Mod.: wie 7.<br>Bu2 (A)                       | Oszilloskop                        | TP 1  | negativer Offset        |                        |  |



## 7. Test and alignment instructions

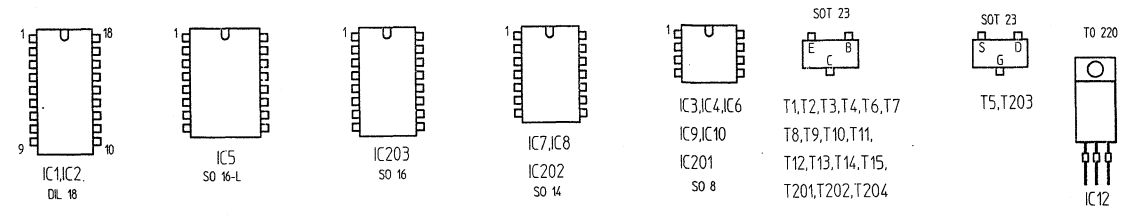
| No.  | Adjustment, Measurement                 | Signal - input  | Preparation, Unit setting           | Testpoint  | Nominal value    | Adjuster               | Remarks   |
|------|---|---|-------------------------------------|--|------------------|------------------------|---|
| 1    | Operating voltage                       |   | S2 "On"                             | IC2 / Pin 1  | $U=10V \pm 0.5V$ |                        |   |
| 2    | Min. current consumption                |   | S2 "Off"                            | S2  | $115mA \pm 15mA$ |                        | Bridge S2 with Ammeter                              |
| 3    | AAC - oscillator frequency              |   | S2 "On"<br>Oscilloscope             | TP 2   | $f=100Hz$        | P202                   | Check transient response by actuating on/off switch |
| 4    | AAC - Modulation voltage                |   | Oscilloscope                        | TP 1   | $U=3.5 V_{pp}$   | P201                   |   |
| 5    | Local oscillator                        |   | Spectrum-analyser                   | T2 / Base  |                  | L10                    | Check transient response by actuating on/off switch |
| 5.1  | LO - filter                             |   | Spectrum-analyser                   | IC1 / Pin18  | max. level       | VC5, VC6               |   |
| 6    | RF - input circuit                      | Tracking generator at $Bu2=-30dBm$                          | TP 1 to ground<br>Spectrum-analyser | IC1 / Pin5   | $> -20dBm$       | VC1 / VC2<br>VC3 / VC4 |   |
| 7    | IF - circuit                            | RF=see Type plate<br>$U=10\mu V$ ,<br>Dev=40kHz,<br>AF=1kHz | UPM 550-1,<br>Oscilloscope          | Bu4  | max. AF          | L14, L16,<br>L18       | Decrease input voltage to adjust max. sensitivity   |
| 8    | AF - level (HiDyn)                      | RF=1mV<br>Mod.: as 7.                                       | UPM 550-1                           | TP 5   | 0dBm / 775mV     | P2                     |   |
| 8.1  | AF - output level                       | as 8.   | P4 – turn cw<br>UPM 550-1           | Bu4  | approx. 3.1Veff  |                        |   |
| 9    | THD                                     | as 8.   | AF at $Bu4=775mV$<br>UPM 550-1      | Bu4  | $\leq 1\%$       | L18                    | Check output level at Bu4                           |
| 10   | S/N - ratio                             | RF=3 $\mu V$<br>Mod.: as 7.                                 | UPM 550-1                           | Bu4  | $\geq 70 dB A$   |                        |   |
| 10.1 | S/N - ratio                             | RF=1mV<br>Mod.: as 7.                                       | UPM 550-1                           | Bu4  | $\geq 100 dB A$  |                        |   |
| 11   | RF - level meter                        | RF=10 $\mu V$<br>Mod.: as 7.                                |                                     |  |                  | P1                     | Yellow LED just bright                              |
| 12   | Squelch                                 | RF=2.5 $\mu V$<br>Mod.: as 7.                               |                                     |  |                  | P5                     | Squelch becomes effective around pos. "1"           |
| 13   | Headphone output                        | RF=1mV<br>Mod.: as 7.                                       | UPM 550-1                           | Bu3  | approx. 3.0Veff  |                        |   |
| 14   | AAC - Automatic Antenna Control input B | RF=2.5 $\mu V$<br>Mod.: as 7.<br>Bu201 (B)                  | Oscilloscope                        | TP 1   | positive offset  |                        |   |
| 14.1 | AAC - Automatic Antenna Control input A | RF=2.5 $\mu V$<br>Mod.: as 7.<br>Bu2 (A)                    | Oscilloscope                        | TP 1   | negative offset  |                        |   |



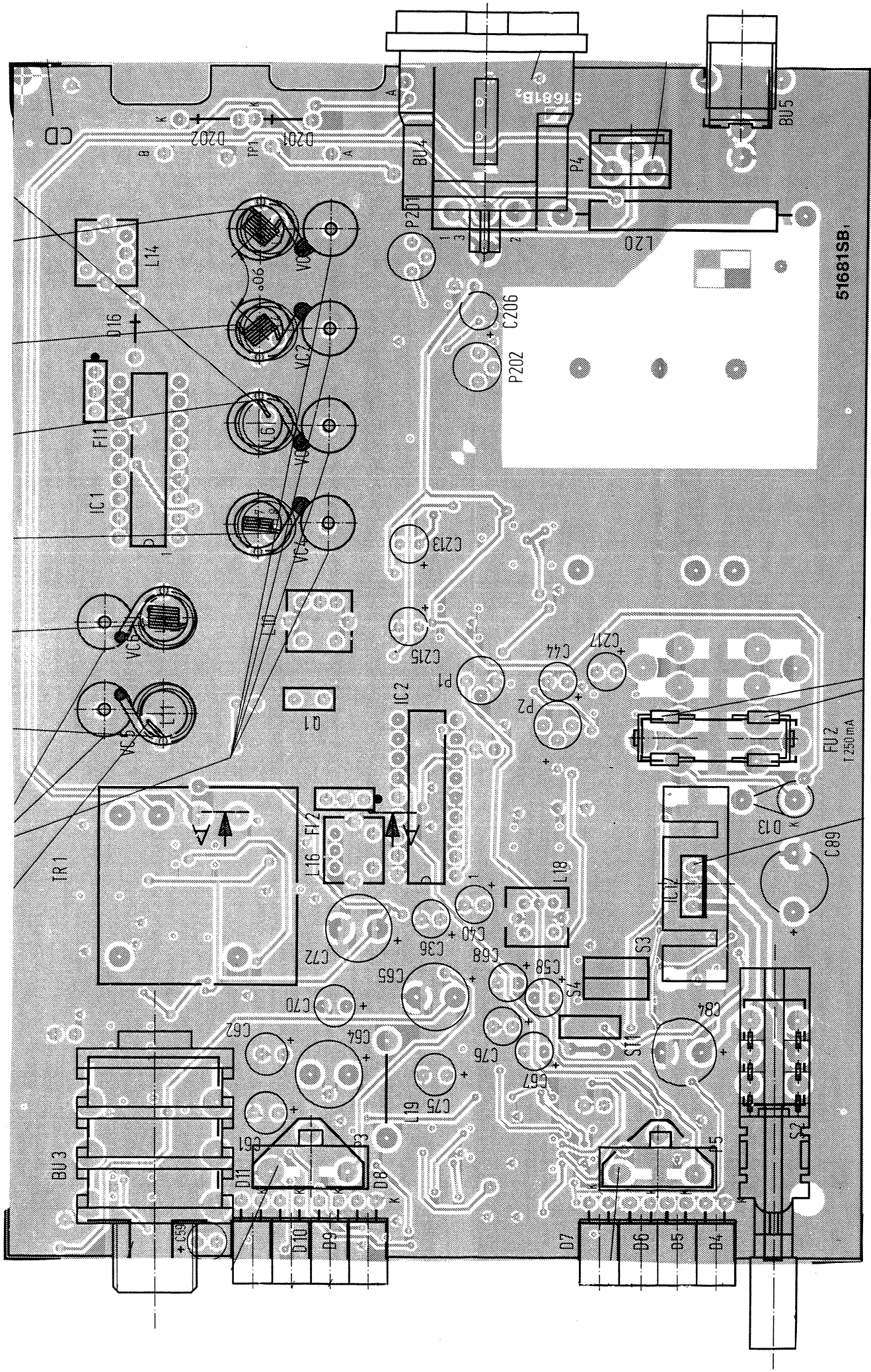


|   |     |     |     |     |     |     |     |     |     |     |     |     |   |     |     |    |   |    |    |    |    |    |    |     |    |     |    |    |    |    |    |    |     |    |    |    |    |    |    |    |    |    |    |    |    |    |    |    |    |    |    |    |    |    |    |    |     |    |    |    |    |     |     |    |    |    |    |    |    |    |    |    |    |    |     |    |    |    |    |    |    |    |    |    |    |    |    |    |    |    |    |   |
|---|-----|-----|-----|-----|-----|-----|-----|-----|-----|-----|-----|-----|---|-----|-----|----|---|----|----|----|----|----|----|-----|----|-----|----|----|----|----|----|----|-----|----|----|----|----|----|----|----|----|----|----|----|----|----|----|----|----|----|----|----|----|----|----|----|-----|----|----|----|----|-----|-----|----|----|----|----|----|----|----|----|----|----|----|-----|----|----|----|----|----|----|----|----|----|----|----|----|----|----|----|----|---|
| R | 203 | 227 | 212 | 202 | 206 | 204 | 207 | 208 | 205 | 219 | 221 | 217 | 1 | 222 | 225 | 2  | 3 | 8  | 4  | 69 | 70 | 9  | 10 | 106 | 6  | 226 | 11 | 12 | 13 | 23 | 75 | 7  | 107 | 79 | 14 | 15 | 17 | 84 | 86 | 18 | 90 | 20 | 21 | 22 | 23 | 92 | 24 | 93 | 25 | 28 | 30 | 47 | 31 | 32 | 50 | 96 | 100 | 33 | 52 | 98 | 54 | 110 | 111 | 57 | 58 | 35 | 39 | 36 | 40 | 41 | 43 | 44 | 65 | 45 | 108 | 46 | 66 | 67 | 68 | 69 | 70 | 71 | 72 | 73 | 74 | 75 | 62 | 64 | 66 | 65 | 76 | R |
| C | 201 | 211 | 202 | 206 | 204 | 207 | 208 | 209 | 213 | 214 | 215 | 1   | 2 | 4   | 13  | 98 | 3 | 79 | 14 | 5  | 15 | 16 | 9  | 10  | 11 | 12  | 19 | 32 | 21 | 20 | 33 | 81 | 36  | 37 | 38 | 40 | 41 | 35 | 36 | 37 | 38 | 40 | 41 | 42 | 43 | 44 | 45 | 83 | 46 | 47 | 48 | 50 | 84 | 68 | 51 | 53 | 67  | 52 | 86 | 54 | 89 | 88  | 57  | 96 | 71 | 72 | 58 | 59 | 73 | 61 | 95 | 97 | 74 | 63 | 62  | 64 | 66 | 65 | 76 | C  |    |    |    |    |    |    |    |    |    |    |    |   |

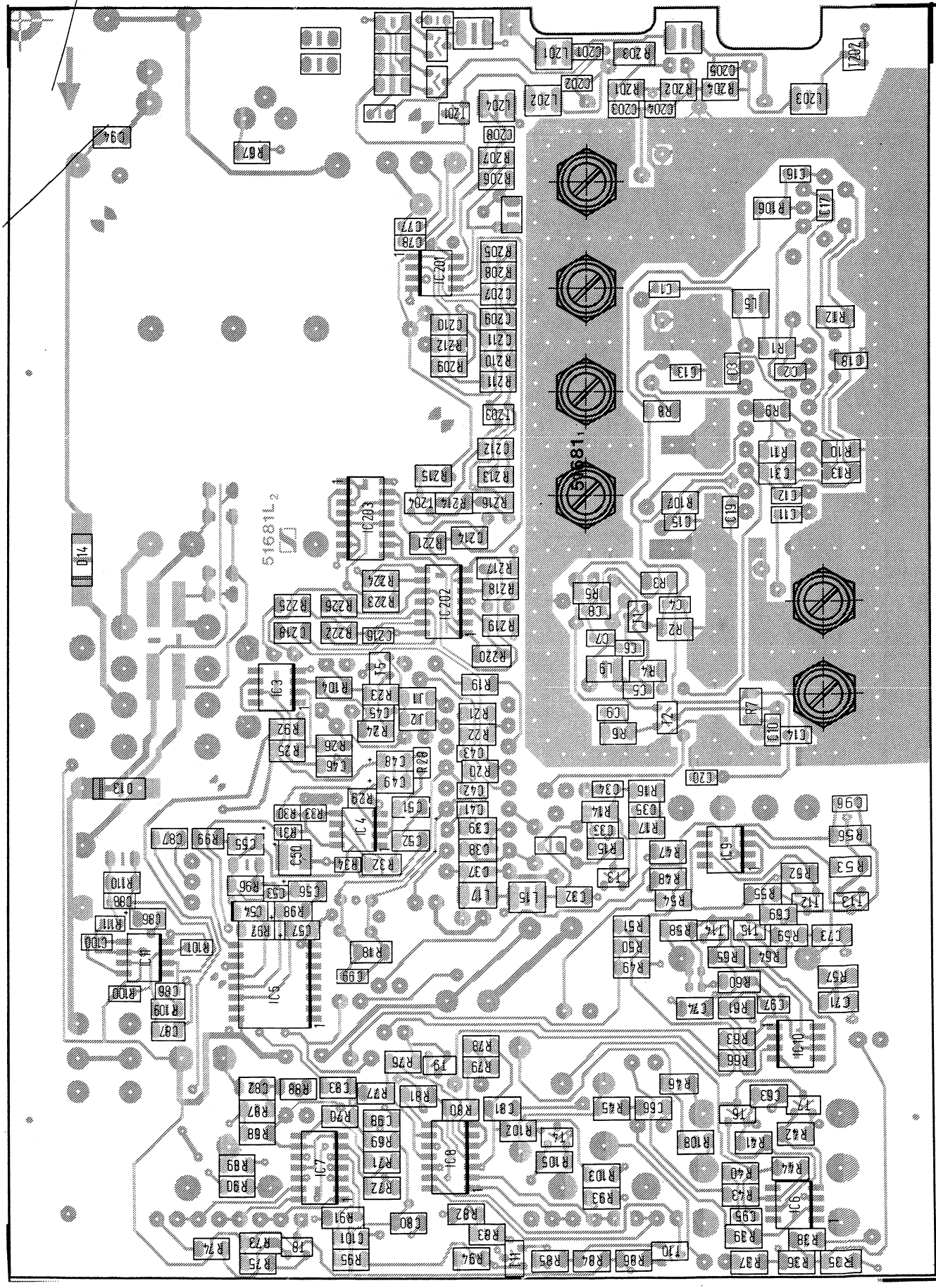
| Frequenzbereich<br>Frequency range<br>(MHz) | Bauelemente<br>Components<br>(L6 L9 R301 R302) |
|---|--|
| 138-170                                     | 8p2 0,68μH - -                                 |
| 170-205                                     | 12p 1,0 μH 10k -                               |
| 205-230                                     | 8p2 0,68μH - 10k                               |
| 230-250                                     | 4p7 0,68μH 10k 10k                             |



Stromlaufplan EM 1005 - 90, 1 Kanal, 138 - 250 MHz  
Circuit diagram EM 1005 - 90, 1 channel, 138 - 250 MHz

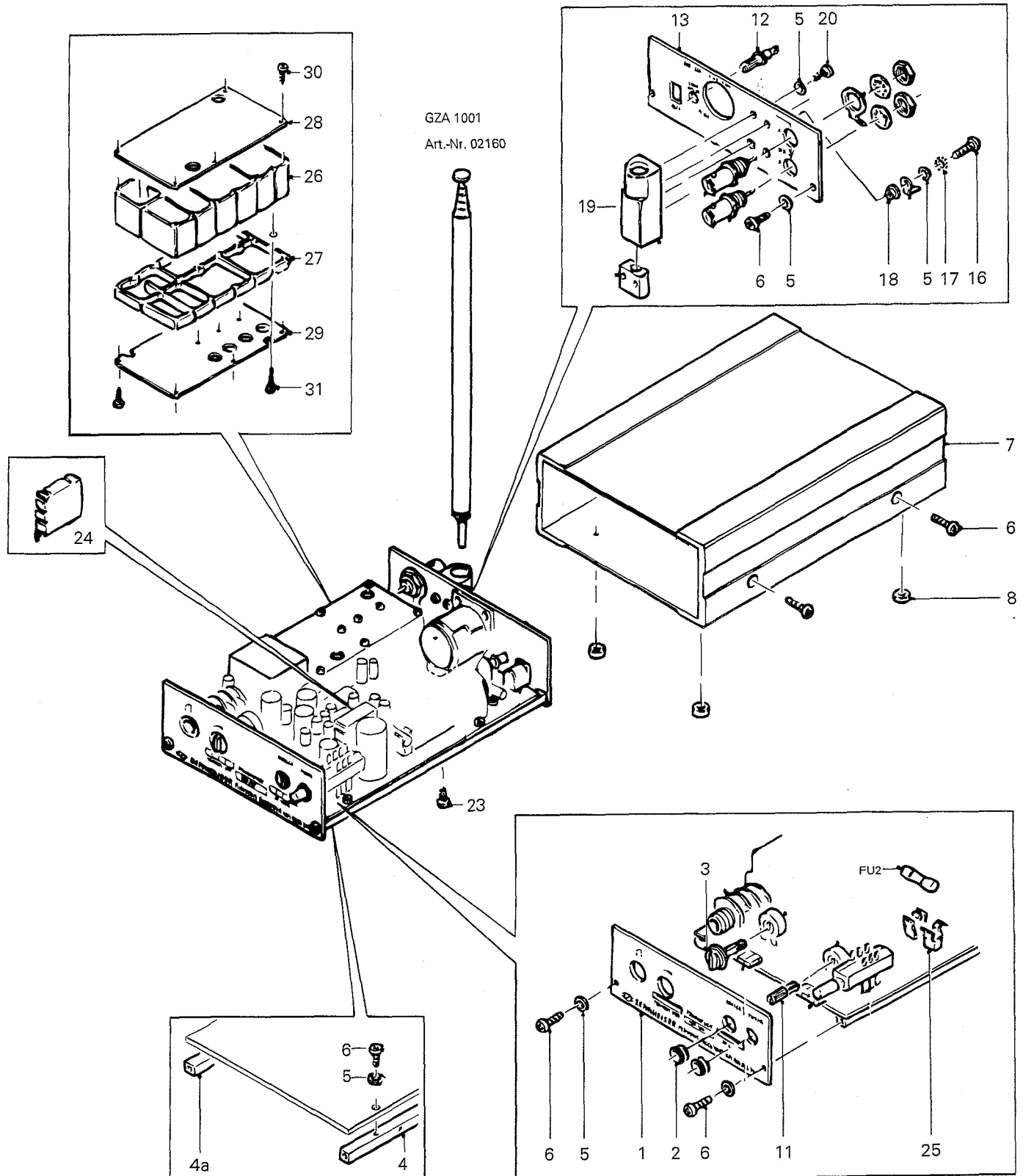


EM 1005 - 90, Gedruckte Schaltung, Bestückungsseite, Elektronik, 1 Kanal, 138 - 250 MHz  
 EM 1005 - 90, printed circuit board, equipped side, electronic, 1 channel, 138 - 250 MHz



EM 1005 - 90, Gedruckte Schaltung, Lötseite, Elektronik, 1 Kanal, 138 - 250 MHz  
 EM 1005 - 90, printed circuit board, foil side, electronic, 1 channel, 138 - 250 MHz

10. Explosionszeichnung  
Exploded view



**10. Ersatzteile**  
**Spare parts**

| POS   | IDENT | BEZEICHNUNG   | DESCRIPTION   |
|-------|-------|---|---|
| 001A  | 52456 | Frontplatte (EM1005/HDP)  | Front panel (EM1005/HDP)  |
| 001B  | 52528 | Frontplatte (EM1005/BZT)  | Front panel (EM1005/BZT)  |
| 002   | 34510 | Durchführung  | Ring  |
| 003   | 36048 | Knopf   | Knob  |
| 004   | 52038 | Montagesäule  | Mounting device, columnar   |
| 004A  | 52040 | Montagesäule  | Mounting device, columnar   |
| 005   | 22662 | Scheibe 2,7 DIN433 (MOQ:10x)  | Washer 2.7 DIN433 (MOQ:10x)   |
| 006   | 52104 | Schraube CM2,5x8 DIN7500 (MOQ:10x)  | Screw CM2.5x8 DIN7500 (MOQ:10x)   |
| 007   | 19354 | Gehäuse   | Housing   |
| 008   | 47793 | Fuß   | Foot  |
| 009   | 52546 | Netzteil 230V/15VDCx0,6A  | Power supply unit 230V/15VDCx0.6A                                       |
| 011   | 19819 | Steckwelle  | Shaft extension   |
| 012   | 19756 | Steckwelle  | Shaft extension   |
| 013   | 52437 | Rückwand  | Rear panel  |
| 016   | 22988 | Linsen-Schraube M2,5x16 DIN7985 (MOQ:10x)                                 | Lens screw M2.5x16 DIN7985 (MOQ:10x)                                    |
| 017   | 22857 | Zahnscheibe A2,8 DIN6797 (MOQ:10x)  | Tooth lock washer A2.8 DIN6797 (MOQ:10x)                                |
| 018   | 20290 | Buchse  | Socket  |
| 019   | 32901 | Halterung   | Holder  |
| 020   | 26934 | Blechschrabe St2,2x6,5 DIN7981 (MOQ:10x)                                  | Sheet metal screw St2.2x6.5 DIN7981 (MOQ:10x)                           |
| 023   | 26702 | Blechschrabe St2,2x4,5 DIN7981 (MOQ:10x)                                  | Sheet metal screw St2.2x4.5 DIN7981 (MOQ:10x)                           |
| 024   | 40577 | Kühlkörper  | Heat sink   |
| 025   | 21473 | Sicherungshalter  | Fuse holder   |
| 026   | 39744 | Abschirmprofil  | Shielding profile   |
| 027   | 39745 | Abschirmprofil  | Shielding profile   |
| 028   | 39746 | Profildeckel  | Cover   |
| 029   | 39747 | Profildeckel  | Cover   |
| 030   | 42683 | Schraube DG 22x6 (MOQ:10x)  | Screw DG 22x6 (MOQ:10x)   |
| 031   | 42684 | Schraube DG 22x10 (MOQ:10x)   | Screw DG 22x10 (MOQ:10x)  |
| BU001 | 21993 | BNC-Buchse 50R  | BNC socket 50R  |
| BU002 | 21993 | BNC-Buchse 50R  | BNC socket 50R  |
| BU003 | 40441 | Buchse, 6,3 mm  | Socket, 6.3 mm  |
| BU004 | 24204 | Einbaustecker   | Socket  |
| BU005 | 45409 | Hohlklinkenbuchse   | Jack bush   |
| BU201 | 21993 | BNC-Buchse 50R  | BNC socket 50R  |
| C001  | 28692 | SMD Kondensator KERKO 100pF 50V NPO (MOQ:50x)                             | SMD capacitor KERKO 100pF 50V NPO 0805 (MOQ:50x)                        |
| C002  | 19512 | SMD Kondensator KERKO 1nF 50V NPO 0805 (MOQ:50x)                          | SMD capacitor KERKO 1nF 50V NPO 0805 (MOQ:50x)                          |
| C003  | 19512 | SMD Kondensator KERKO 1nF 50V NPO 0805 (MOQ:50x)                          | SMD capacitor KERKO 1nF 50V NPO 0805 (MOQ:50x)                          |
| C004  | 19512 | SMD Kondensator KERKO 1nF 50V NPO 0805 (MOQ:50x)                          | SMD capacitor KERKO 1nF 50V NPO 0805 (MOQ:50x)                          |
| C005  | 19584 | SMD Kondensator KERKO 22pF 50V NPO 0805 (MOQ:50x)                         | SMD capacitor KERKO 22pF 50V NPO 0805 (MOQ:50x)                         |
| C006  | 40587 | SMD Spule 0,68uH  | SMD coil 0.68uH   |
| C006A | 29565 | SMD Kondensator KERKO 8,2pF 50V NPO 0805 (MOQ:50x)<br>138-170, 205-230MHz | SMD capacitor KERKO 8.2pF 50V NPO 0805 (MOQ:50x)<br>138-170, 205-230MHz |
| C006B | 33125 | SMD Kondensator KERKO 12pF 50V N150 (MOQ:50x)<br>170-205MHz               | SMD capacitor KERKO 12pF 50V N150 0805 (MOQ:50x)<br>170-205MHz          |
| C006C | 17941 | SMD Kondensator KERKO 4,7pF 50V NPO 0805 (MOQ:50x)<br>230-250MHz          | SMD capacitor KERKO 4.7pF 50V NPO 0805 (MOQ:50x)<br>230-250MHz          |
| C007  | 29833 | SMD Kondensator KERKO 82pF 50V N150 (MOQ:50x)                             | SMD capacitor KERKO 82pF 50V N150 (MOQ:50x)                             |
| C008  | 19512 | SMD Kondensator KERKO 1nF 50V NPO 0805 (MOQ:50x)                          | SMD capacitor KERKO 1nF 50V NPO 0805 (MOQ:50x)                          |
| C009  | 19512 | SMD Kondensator KERKO 1nF 50V NPO 0805 (MOQ:50x)                          | SMD capacitor KERKO 1nF 50V NPO 0805 (MOQ:50x)                          |
| C010  | 19512 | SMD Kondensator KERKO 1nF 50V NPO 0805 (MOQ:50x)                          | SMD capacitor KERKO 1nF 50V NPO 0805 (MOQ:50x)                          |
| C011  | 28692 | SMD Kondensator KERKO 100pF 50V NPO (MOQ:50x)                             | SMD capacitor KERKO 100pF 50V NPO 0805 (MOQ:50x)                        |
| C012  | 29011 | SMD Kondensator KERKO 2,2pF 50V NPO (MOQ:50x)                             | SMD capacitor KERKO 2.2pF 50V NPO (MOQ:50x)                             |
| C013  | 19512 | SMD Kondensator KERKO 1nF 50V NPO 0805 (MOQ:50x)                          | SMD capacitor KERKO 1nF 50V NPO 0805 (MOQ:50x)                          |
| C014  | 19512 | SMD Kondensator KERKO 1nF 50V NPO 0805 (MOQ:50x)                          | SMD capacitor KERKO 1nF 50V NPO 0805 (MOQ:50x)                          |
| C015  | 19512 | SMD Kondensator KERKO 1nF 50V NPO 0805 (MOQ:50x)                          | SMD capacitor KERKO 1nF 50V NPO 0805 (MOQ:50x)                          |
| C016  | 17648 | SMD Kondensator KERKO 10nF 50V X7R (MOQ:50x)                              | SMD capacitor KERKO 10nF 50V X7R 0805 (MOQ:50x)                         |
| C018  | 17648 | SMD Kondensator KERKO 10nF 50V X7R (MOQ:50x)                              | SMD capacitor KERKO 10nF 50V X7R 0805 (MOQ:50x)                         |
| C019  | 17648 | SMD Kondensator KERKO 10nF 50V X7R (MOQ:50x)                              | SMD capacitor KERKO 10nF 50V X7R 0805 (MOQ:50x)                         |
| C020  | 19512 | SMD Kondensator KERKO 1nF 50V NPO 0805 (MOQ:50x)                          | SMD capacitor KERKO 1nF 50V NPO 0805 (MOQ:50x)                          |
| C021  | 19482 | SMD Kondensator KERKO 330pF 50V NPO (MOQ:50x)                             | SMD capacitor KERKO 330pF 50V NPO 0805 (MOQ:50x)                        |
| C031  | 19480 | SMD Kondensator KERKO 100nF 50V X7R (MOQ:50x)                             | SMD capacitor KERKO 100nF 50V X7R (MOQ:50x)                             |
| C032  | 32987 | SMD Kondensator KERKO 470nF 25V Z5U 1206 (MOQ:50x)                        | SMD capacitor KERKO 470nF 25V Z5U 1206(MOQ:50x)                         |
| C033  | 17648 | SMD Kondensator KERKO 10nF 50V X7R (MOQ:50x)                              | SMD capacitor KERKO 10nF 50V X7R 0805 (MOQ:50x)                         |
| C034  | 17648 | SMD Kondensator KERKO 10nF 50V X7R (MOQ:50x)                              | SMD capacitor KERKO 10nF 50V X7R 0805 (MOQ:50x)                         |
| C035  | 19617 | SMD Kondensator KERKO 10pF 50V NPO 0805 (MOQ:50x)                         | SMD capacitor KERKO 10pF 50V NPO 0805 (MOQ:50x)                         |
| C036  | 27962 | Kondensator AL-ELKO 22uF 16V CA   | Capacitor AL-ELKO 22uF 16V CA   |
| C037  | 19480 | SMD Kondensator KERKO 100nF 50V X7R (MOQ:50x)                             | SMD capacitor KERKO 100nF 50V X7R (MOQ:50x)                             |
| C038  | 19480 | SMD Kondensator KERKO 100nF 50V X7R (MOQ:50x)                             | SMD capacitor KERKO 100nF 50V X7R (MOQ:50x)                             |
| C039  | 19480 | SMD Kondensator KERKO 100nF 50V X7R (MOQ:50x)                             | SMD capacitor KERKO 100nF 50V X7R (MOQ:50x)                             |
| C040  | 27962 | Kondensator AL-ELKO 22uF 16V CA   | Capacitor AL-ELKO 22uF 16V CA   |

| POS  | IDENT | BEZEICHNUNG  | DESCRIPTION                                      |
|------|-------|--|--|
| C041 | 28816 | SMD Kondensator KERKO 33pF 50V NPO (MOQ:50x)       | SMD capacitor KERKO 33pF 50V NPO (MOQ:50x)       |
| C042 | 28816 | SMD Kondensator KERKO 33pF 50V NPO (MOQ:50x)       | SMD capacitor KERKO 33pF 50V NPO (MOQ:50x)       |
| C043 | 19512 | SMD Kondensator KERKO 1nF 50V NPO 0805 (MOQ:50x)   | SMD capacitor KERKO 1nF 50V NPO 0805 (MOQ:50x)   |
| C044 | 27962 | Kondensator AL-ELKO 22uF 16V CA                    | Capacitor AL-ELKO 22uF 16V CA                    |
| C045 | 17630 | SMD Kondensator KERKO 4,7nF 50V X7R (MOQ:50x)      | SMD capacitor KERKO 4.7nF 50V X7R 0805 (MOQ:50x) |
| C046 | 19480 | SMD Kondensator KERKO 100nF 50V X7R (MOQ:50x)      | SMD capacitor KERKO 100nF 50V X7R (MOQ:50x)      |
| C047 | 28601 | Kondensator AL-ELKO 47uF 10V                       | Capacitor AL-ELKO 47uF 10V                       |
| C048 | 45050 | SMD Kondensator TA-KO 470nF 20V                    | SMD Capacitor TA-KO 470nF 20V                    |
| C049 | 45050 | SMD Kondensator TA-KO 470nF 20V                    | SMD Capacitor TA-KO 470nF 20V                    |
| C050 | 45010 | SMD Kondensator TA-KO 10uF 4V ERO ETPW1            | SMD capacitor TA-KO 10uF 4V ERO ETPW1            |
| C051 | 45050 | SMD Kondensator TA-KO 470nF 20V                    | SMD Capacitor TA-KO 470nF 20V                    |
| C052 | 45050 | SMD Kondensator TA-KO 470nF 20V                    | SMD Capacitor TA-KO 470nF 20V                    |
| C053 | 17648 | SMD Kondensator KERKO 10nF 50V X7R (MOQ:50x)       | SMD capacitor KERKO 10nF 50V X7R 0805 (MOQ:50x)  |
| C054 | 45050 | SMD Kondensator TA-KO 470nF 20V                    | SMD Capacitor TA-KO 470nF 20V                    |
| C055 | 48318 | SMD Kondensator TA-KO 10uF 4V                      | SMD capacitor TA-KO 10uF 4V                      |
| C056 | 48318 | SMD Kondensator TA-KO 10uF 4V                      | SMD capacitor TA-KO 10uF 4V                      |
| C057 | 45043 | SMD Kondensator TA-KO 2,2uF 16V IEC 384,3          | SMD capacitor TA-KO 2.2uF 16V IEC 384,3          |
| C058 | 27962 | Kondensator AL-ELKO 22uF 16V CA                    | Capacitor AL-ELKO 22uF 16V CA                    |
| C059 | 24506 | Kondensator TA-ELKO 1uF 35V                        | Capacitor TA-ELKO 1uF 35V                        |
| C061 | 28601 | Kondensator AL-ELKO 47uF 10V                       | Capacitor AL-ELKO 47uF 10V                       |
| C062 | 28601 | Kondensator AL-ELKO 47uF 10V                       | Capacitor AL-ELKO 47uF 10V                       |
| C063 | 19480 | SMD Kondensator KERKO 100nF 50V X7R (MOQ:50x)      | SMD capacitor KERKO 100nF 50V X7R (MOQ:50x)      |
| C064 | 17460 | Kondensator AL-ELKO 220uF 40V CA                   | Capacitor AL-ELKO 220uF 40V CA                   |
| C065 | 40465 | Kondensator AL-ELKO 470uF 16V                      | Capacitor AL-ELKO 470uF 16V                      |
| C066 | 19480 | SMD Kondensator KERKO 100nF 50V X7R (MOQ:50x)      | SMD capacitor KERKO 100nF 50V X7R (MOQ:50x)      |
| C067 | 25730 | Kondensator AL-ELKO 4,7uF 35V                      | Capacitor AL-ELKO 4.7uF 35V                      |
| C068 | 27962 | Kondensator AL-ELKO 22uF 16V CA                    | Capacitor AL-ELKO 22uF 16V CA                    |
| C069 | 19480 | SMD Kondensator KERKO 100nF 50V X7R (MOQ:50x)      | SMD capacitor KERKO 100nF 50V X7R (MOQ:50x)      |
| C070 | 28601 | Kondensator AL-ELKO 47uF 10V                       | Capacitor AL-ELKO 47uF 10V                       |
| C071 | 19480 | SMD Kondensator KERKO 100nF 50V X7R (MOQ:50x)      | SMD capacitor KERKO 100nF 50V X7R (MOQ:50x)      |
| C072 | 40465 | Kondensator AL-ELKO 470uF 16V                      | Capacitor AL-ELKO 470uF 16V                      |
| C073 | 19480 | SMD Kondensator KERKO 100nF 50V X7R (MOQ:50x)      | SMD capacitor KERKO 100nF 50V X7R (MOQ:50x)      |
| C074 | 19480 | SMD Kondensator KERKO 100nF 50V X7R (MOQ:50x)      | SMD capacitor KERKO 100nF 50V X7R (MOQ:50x)      |
| C075 | 28601 | Kondensator AL-ELKO 47uF 10V                       | Capacitor AL-ELKO 47uF 10V                       |
| C076 | 27962 | Kondensator AL-ELKO 22uF 16V CA                    | Capacitor AL-ELKO 22uF 16V CA                    |
| C077 | 19512 | SMD Kondensator KERKO 1nF 50V NPO 0805 (MOQ:50x)   | SMD capacitor KERKO 1nF 50V NPO 0805 (MOQ:50x)   |
| C078 | 19512 | SMD Kondensator KERKO 1nF 50V NPO 0805 (MOQ:50x)   | SMD capacitor KERKO 1nF 50V NPO 0805 (MOQ:50x)   |
| C080 | 19480 | SMD Kondensator KERKO 100nF 50V X7R (MOQ:50x)      | SMD capacitor KERKO 100nF 50V X7R (MOQ:50x)      |
| C081 | 19480 | SMD Kondensator KERKO 100nF 50V X7R (MOQ:50x)      | SMD capacitor KERKO 100nF 50V X7R (MOQ:50x)      |
| C082 | 19480 | SMD Kondensator KERKO 100nF 50V X7R (MOQ:50x)      | SMD capacitor KERKO 100nF 50V X7R (MOQ:50x)      |
| C083 | 19480 | SMD Kondensator KERKO 100nF 50V X7R (MOQ:50x)      | SMD capacitor KERKO 100nF 50V X7R (MOQ:50x)      |
| C084 | 17460 | Kondensator AL-ELKO 220uF 40V CA                   | Capacitor AL-ELKO 220uF 40V CA                   |
| C085 | 48318 | SMD Kondensator TA-KO 10uF 4V                      | SMD capacitor TA-KO 10uF 4V                      |
| C086 | 19479 | SMD Kondensator KERKO 470pF 50V NPO 0805 (MOQ:50x) | SMD capacitor KERKO 470pF 50V NPO 0805(MOQ:50x)  |
| C087 | 19480 | SMD Kondensator KERKO 100nF 50V X7R (MOQ:50x)      | SMD capacitor KERKO 100nF 50V X7R (MOQ:50x)      |
| C088 | 17630 | SMD Kondensator KERKO 4,7nF 50V X7R (MOQ:50x)      | SMD capacitor KERKO 4.7nF 50V X7R 0805 (MOQ:50x) |
| C089 | 40752 | Kondensator AL-ELKO 1mF 50V GPF                    | Capacitor AL-ELKO 1mF 50V GPF                    |
| C094 | 17648 | SMD Kondensator KERKO 10nF 50V X7R (MOQ:50x)       | SMD capacitor KERKO 10nF 50V X7R 0805 (MOQ:50x)  |
| C098 | 32987 | SMD Kondensator KERKO 470nF 25V Z5U 1206 (MOQ:50x) | SMD capacitor KERKO 470nF 25V Z5U 1206(MOQ:50x)  |
| C099 | 28836 | SMD Kondensator KERKO 560pF 50V NPO (MOQ:50x)      | SMD capacitor KERKO 560pF 50V NPO (MOQ:50x)      |
| C100 | 19584 | SMD Kondensator KERKO 22pF 50V NPO 0805 (MOQ:50x)  | SMD capacitor KERKO 22pF 50V NPO 0805 (MOQ:50x)  |
| C101 | 19480 | SMD Kondensator KERKO 100nF 50V X7R (MOQ:50x)      | SMD capacitor KERKO 100nF 50V X7R (MOQ:50x)      |
| C201 | 19512 | SMD Kondensator KERKO 1nF 50V NPO 0805 (MOQ:50x)   | SMD capacitor KERKO 1nF 50V NPO 0805 (MOQ:50x)   |
| C202 | 19512 | SMD Kondensator KERKO 1nF 50V NPO 0805 (MOQ:50x)   | SMD capacitor KERKO 1nF 50V NPO 0805 (MOQ:50x)   |
| C203 | 19512 | SMD Kondensator KERKO 1nF 50V NPO 0805 (MOQ:50x)   | SMD capacitor KERKO 1nF 50V NPO 0805 (MOQ:50x)   |
| C204 | 19512 | SMD Kondensator KERKO 1nF 50V NPO 0805 (MOQ:50x)   | SMD capacitor KERKO 1nF 50V NPO 0805 (MOQ:50x)   |
| C205 | 19512 | SMD Kondensator KERKO 1nF 50V NPO 0805 (MOQ:50x)   | SMD capacitor KERKO 1nF 50V NPO 0805 (MOQ:50x)   |
| C206 | 27962 | Kondensator AL-ELKO 22uF 16V CA                    | Capacitor AL-ELKO 22uF 16V CA                    |
| C207 | 19480 | SMD Kondensator KERKO 100nF 50V X7R (MOQ:50x)      | SMD capacitor KERKO 100nF 50V X7R (MOQ:50x)      |
| C208 | 29112 | SMD Kondensator KERKO 220pF 50V NPO 0805 (MOQ:50x) | SMD capacitor KERKO 220pF 50V NPO 0805 (MOQ:50x) |
| C209 | 19480 | SMD Kondensator KERKO 100nF 50V X7R (MOQ:50x)      | SMD capacitor KERKO 100nF 50V X7R (MOQ:50x)      |
| C210 | 19480 | SMD Kondensator KERKO 100nF 50V X7R (MOQ:50x)      | SMD capacitor KERKO 100nF 50V X7R (MOQ:50x)      |
| C211 | 19480 | SMD Kondensator KERKO 100nF 50V X7R (MOQ:50x)      | SMD capacitor KERKO 100nF 50V X7R (MOQ:50x)      |
| C212 | 19480 | SMD Kondensator KERKO 100nF 50V X7R (MOQ:50x)      | SMD capacitor KERKO 100nF 50V X7R (MOQ:50x)      |
| C213 | 25730 | Kondensator AL-ELKO 4,7uF 35V                      | Capacitor AL-ELKO 4.7uF 35V                      |
| C214 | 19480 | SMD Kondensator KERKO 100nF 50V X7R (MOQ:50x)      | SMD capacitor KERKO 100nF 50V X7R (MOQ:50x)      |
| C215 | 27962 | Kondensator AL-ELKO 22uF 16V CA                    | Capacitor AL-ELKO 22uF 16V CA                    |
| C216 | 29181 | SMD Kondensator KERKO 3,3nF 50V X7R 0805 (MOQ:50x) | SMD capacitor KERKO 3.3nF 50V X7R 0805 (MOQ:50x) |
| C217 | 27962 | Kondensator AL-ELKO 22uF 16V CA                    | Capacitor AL-ELKO 22uF 16V CA                    |
| C218 | 19480 | SMD Kondensator KERKO 100nF 50V X7R (MOQ:50x)      | SMD capacitor KERKO 100nF 50V X7R (MOQ:50x)      |
| D004 | 32910 | LED grün   | LED, green                                       |
| D005 | 32910 | LED grün   | LED, green                                       |
| D006 | 40585 | LED, gelb  | LED, yellow                                      |

| POS   | IDENT | BEZEICHNUNG                           | DESCRIPTION                         |
|-------|-------|---------------------------------------|-------------------------------------|
| D007  | 32909 | LED rot                               | LED, red                            |
| D008  | 32909 | LED rot                               | LED, red                            |
| D009  | 40585 | LED, gelb                             | LED, yellow                         |
| D010  | 32910 | LED grün                              | LED, green                          |
| D011  | 32910 | LED grün                              | LED, green                          |
| D013  | 29249 | Begrenzer-Diode                       | Threshold diode                     |
| D014  | 40350 | SMD Schottky-Diode D1FS4 ROE          | SMD Schottky diode D1FS4 ROE        |
| D016  | 40583 | Pin-Diode BA389                       | Pin diode BA389                     |
| D201  | 40583 | Pin-Diode BA389                       | Pin diode BA389                     |
| D202  | 40583 | Pin-Diode BA389                       | Pin diode BA389                     |
| FI001 | 40588 | Keramik-Filter 10,7MHz                | Ceramic filter 10,7MHz              |
| FI002 | 40588 | Keramik-Filter 10,7MHz                | Ceramic filter 10,7MHz              |
| FU002 | 29531 | Sicherung 0,25A DIN41662              | Fuse 0.25A DIN41662                 |
| IC001 | 40120 | IC Tuner U4062B D18P                  | IC tuner U4062B D18P                |
| IC002 | 16275 | IC TDA1576                            | IC TDA1576                          |
| IC003 | 40434 | IC TL071CD                            | IC TL071CD                          |
| IC004 | 40099 | SMD IC TL072CD S08                    | SMD IC TL072CD S08                  |
| IC005 | 45093 | SMD IC NE572D SOL16                   | SMD IC NE572D SOL16                 |
| IC006 | 25136 | SMD IC NE5534DT S08                   | SMD IC NE5534DT S08                 |
| IC007 | 32249 | IC 339                                | IC 339                              |
| IC008 | 32249 | IC 339                                | IC 339                              |
| IC009 | 40434 | IC TL071CD                            | IC TL071CD                          |
| IC010 | 40434 | IC TL071CD                            | IC TL071CD                          |
| IC011 | 25136 | SMD IC NE5534DT S08                   | SMD IC NE5534DT S08                 |
| IC012 | 45055 | IC LM2940T                            | IC LM2940T                          |
| IC201 | 45537 | SMD IC TL 062 CD (Texas)              | SMD IC TL 062 CD (Texas)            |
| IC202 | 45536 | SMD IC TL 064 CD                      | SMD IC TL 064 CD                    |
| IC203 | 40586 | IC 4053 B                             | IC 4053 B                           |
| L001  | 42771 | HF-Spule                              | RF coil                             |
| L002  | 35886 | HF-Spule                              | RF coil                             |
| L003  | 35889 | HF-Spule                              | RF coil                             |
| L004  | 41350 | HF-Spule                              | RF coil                             |
| L005  | 37191 | SMD Spule 1uH                         | SMD coil 1uH                        |
| L006  | 35886 | HF-Spule                              | RF coil                             |
| L007  | 44242 | HF-Spule                              | RF coil                             |
| L008  | 35889 | HF-Spule                              | RF coil                             |
| L009A | 40587 | SMD Spule 0,68uH                      | SMD coil 0.68uH                     |
| L009B | 37191 | 138-170, 205-250MHz<br>SMD Spule 1uH  | 138-170, 205-250MHz<br>SMD coil 1uH |
| L010  | 41352 | HF-Spule                              | RF coil                             |
| L011  | 35887 | HF-Spule                              | RF coil                             |
| L012  | 35890 | HF-Spule                              | RF coil                             |
| L013  | 35894 | HF-Spule                              | RF coil                             |
| L014  | 40444 | HF-Filter                             | RF filter                           |
| L015  | 34394 | SMD Spule 22uH                        | SMD coil 22uH                       |
| L016  | 40444 | HF-Filter                             | RF filter                           |
| L017  | 34394 | SMD Spule 22uH                        | SMD coil 22uH                       |
| L018  | 45592 | HF-Spule 10,7MHz                      | RF coil 10.7MHz                     |
| L019  | 23581 | Spule 33uH                            | Coil 33uH                           |
| L020  | 28023 | HF-Drossel 40uH                       | RF inductor 40uH                    |
| L201  | 41344 | SMD Spule 150uH                       | SMD coil 150uH                      |
| L202  | 37191 | SMD Spule 1uH                         | SMD coil 1uH                        |
| L203  | 37191 | SMD Spule 1uH                         | SMD coil 1uH                        |
| L204  | 37191 | SMD Spule 1uH                         | SMD coil 1uH                        |
| P001  | 37188 | Trimmwiderstand 10k                   | Resistor, variable 10k              |
| P002  | 34480 | Trimmwiderstand 1k                    | Resistor, variable 1k               |
| P003  | 40581 | Potentiometer 10k                     | Potentiometer 10k                   |
| P004  | 19820 | Potentiometer 1k                      | Potentiometer 1k                    |
| P005  | 41234 | Potentiometer 2k5                     | Potentiometer 2k5                   |
| P201  | 40112 | Trimmwiderstand 100k                  | Resistor, variable 100k             |
| P202  | 40111 | Trimmwiderstand 2k                    | Resistor, variable 2k               |
| Q001  | 40435 | Quarz                                 | Crystal                             |
| R001  | 28742 | SMD Widerstand 56R 5% 1206 (MOQ:50x)  | SMD resistor 56R 5% 1206 (MOQ:50x)  |
| R002  | 19469 | SMD Widerstand 56k 5% 1206 (MOQ:50x)  | SMD resistor 56k 5% 1206 (MOQ:50x)  |
| R003  | 19507 | SMD Widerstand 33k 5% 1206 (MOQ:50x)  | SMD resistor 33k 5% 1206 (MOQ:50x)  |
| R004  | 19464 | SMD Widerstand 470R 5% 1206 (MOQ:50x) | SMD resistor 470R 5% 1206 (MOQ:50x) |
| R005  | 28743 | SMD Widerstand 100R 5% 1206 (MOQ:50x) | SMD resistor 100R 5% 1206 (MOQ:50x) |
| R006  | 28743 | SMD Widerstand 100R 5% 1206 (MOQ:50x) | SMD resistor 100R 5% 1206 (MOQ:50x) |
| R007  | 28743 | SMD Widerstand 100R 5% 1206 (MOQ:50x) | SMD resistor 100R 5% 1206 (MOQ:50x) |
| R008  | 28743 | SMD Widerstand 100R 5% 1206 (MOQ:50x) | SMD resistor 100R 5% 1206 (MOQ:50x) |
| R009  | 19506 | SMD Widerstand 22k 5% 1206 (MOQ:50x)  | SMD resistor 22k 5% 1206 (MOQ:50x)  |
| R010  | 19506 | SMD Widerstand 22k 5% 1206 (MOQ:50x)  | SMD resistor 22k 5% 1206 (MOQ:50x)  |



| POS  | IDENT | BEZEICHNUNG                           | DESCRIPTION                         |
|------|-------|---------------------------------------|-------------------------------------|
| R011 | 19467 | SMD Widerstand 3k3 5% 1206 (MOQ:50x)  | SMD resistor 3k3 5% 1206 (MOQ:50x)  |
| R012 | 28688 | SMD Widerstand 390R 5% 1206 (MOQ:50x) | SMD resistor 390R 5% 1206 (MOQ:50x) |
| R013 | 28688 | SMD Widerstand 390R 5% 1206 (MOQ:50x) | SMD resistor 390R 5% 1206 (MOQ:50x) |
| R014 | 32246 | SMD Widerstand 15k 5% 1206 (MOQ:50x)  | SMD resistor 15k 5% 1206 (MOQ:50x)  |
| R015 | 19476 | SMD Widerstand 47k 5% 1206 (MOQ:50x)  | SMD resistor 47k 5% 1206 (MOQ:50x)  |
| R016 | 28689 | SMD Widerstand 39k 5% 1206 (MOQ:50x)  | SMD resistor 39k 5% 1206 (MOQ:50x)  |
| R017 | 19465 | SMD Widerstand 1k 5% 1206 (MOQ:50x)   | SMD resistor 1k 5% 1206 (MOQ:50x)   |
| R018 | 19465 | SMD Widerstand 1k 5% 1206 (MOQ:50x)   | SMD resistor 1k 5% 1206 (MOQ:50x)   |
| R019 | 19467 | SMD Widerstand 3k3 5% 1206 (MOQ:50x)  | SMD resistor 3k3 5% 1206 (MOQ:50x)  |
| R020 | 19505 | SMD Widerstand 10k 5% 1206 (MOQ:50x)  | SMD resistor 10k 5% 1206 (MOQ:50x)  |
| R021 | 19476 | SMD Widerstand 47k 5% 1206 (MOQ:50x)  | SMD resistor 47k 5% 1206 (MOQ:50x)  |
| R022 | 19506 | SMD Widerstand 22k 5% 1206 (MOQ:50x)  | SMD resistor 22k 5% 1206 (MOQ:50x)  |
| R023 | 19506 | SMD Widerstand 22k 5% 1206 (MOQ:50x)  | SMD resistor 22k 5% 1206 (MOQ:50x)  |
| R024 | 29104 | SMD Widerstand 12k 5% 0805 (MOQ:50x)  | SMD resistor 12k 5% 0805 (MOQ:50x)  |
| R025 | 19476 | SMD Widerstand 47k 5% 1206 (MOQ:50x)  | SMD resistor 47k 5% 1206 (MOQ:50x)  |
| R026 | 19464 | SMD Widerstand 470R 5% 1206 (MOQ:50x) | SMD resistor 470R 5% 1206 (MOQ:50x) |
| R028 | 29101 | SMD Widerstand 5k6 5% 0805 (MOQ:50x)  | SMD resistor 5k6 5% 0805 (MOQ:50x)  |
| R029 | 29167 | SMD Widerstand 22k 5% 0805 (MOQ:50x)  | SMD resistor 22k 5% 0805 (MOQ:50x)  |
| R030 | 29167 | SMD Widerstand 22k 5% 0805 (MOQ:50x)  | SMD resistor 22k 5% 0805 (MOQ:50x)  |
| R031 | 32819 | SMD Widerstand 270R 5% 0805 (MOQ:50x) | SMD resistor 270R 5% 0805 (MOQ:50x) |
| R032 | 28689 | SMD Widerstand 39k 5% 1206 (MOQ:50x)  | SMD resistor 39k 5% 1206 (MOQ:50x)  |
| R033 | 29107 | SMD Widerstand 47k 5% 0805 (MOQ:50x)  | SMD resistor 47k 5% 0805 (MOQ:50x)  |
| R034 | 29107 | SMD Widerstand 47k 5% 0805 (MOQ:50x)  | SMD resistor 47k 5% 0805 (MOQ:50x)  |
| R035 | 29186 | SMD Widerstand 68k 5% 1206 (MOQ:50x)  | SMD resistor 68k 5% 1206 (MOQ:50x)  |
| R036 | 29182 | SMD Widerstand 1R 10% 1206 (MOQ:50x)  | SMD resistor 1R 10% 1206 (MOQ:50x)  |
| R037 | 29182 | SMD Widerstand 1R 10% 1206 (MOQ:50x)  | SMD resistor 1R 10% 1206 (MOQ:50x)  |
| R038 | 29186 | SMD Widerstand 68k 5% 1206 (MOQ:50x)  | SMD resistor 68k 5% 1206 (MOQ:50x)  |
| R039 | 28688 | SMD Widerstand 390R 5% 1206 (MOQ:50x) | SMD resistor 390R 5% 1206 (MOQ:50x) |
| R040 | 19505 | SMD Widerstand 10k 5% 1206 (MOQ:50x)  | SMD resistor 10k 5% 1206 (MOQ:50x)  |
| R041 | 28743 | SMD Widerstand 100R 5% 1206 (MOQ:50x) | SMD resistor 100R 5% 1206 (MOQ:50x) |
| R042 | 28743 | SMD Widerstand 100R 5% 1206 (MOQ:50x) | SMD resistor 100R 5% 1206 (MOQ:50x) |
| R043 | 28687 | SMD Widerstand 120R 5% 1206 (MOQ:50x) | SMD resistor 120R 5% 1206 (MOQ:50x) |
| R044 | 28687 | SMD Widerstand 120R 5% 1206 (MOQ:50x) | SMD resistor 120R 5% 1206 (MOQ:50x) |
| R045 | 19517 | SMD Widerstand 10R 5% 1206 (MOQ:50x)  | SMD resistor 10R 5% 1206 (MOQ:50x)  |
| R046 | 33087 | SMD Widerstand 33R 5% 1206 (MOQ:50x)  | SMD resistor 33R 5% 1206 (MOQ:50x)  |
| R047 | 19476 | SMD Widerstand 47k 5% 1206 (MOQ:50x)  | SMD resistor 47k 5% 1206 (MOQ:50x)  |
| R048 | 19476 | SMD Widerstand 47k 5% 1206 (MOQ:50x)  | SMD resistor 47k 5% 1206 (MOQ:50x)  |
| R049 | 19476 | SMD Widerstand 47k 5% 1206 (MOQ:50x)  | SMD resistor 47k 5% 1206 (MOQ:50x)  |
| R050 | 19476 | SMD Widerstand 47k 5% 1206 (MOQ:50x)  | SMD resistor 47k 5% 1206 (MOQ:50x)  |
| R051 | 19476 | SMD Widerstand 47k 5% 1206 (MOQ:50x)  | SMD resistor 47k 5% 1206 (MOQ:50x)  |
| R052 | 28830 | SMD Widerstand 220R 5% 1206 (MOQ:50x) | SMD resistor 220R 5% 1206 (MOQ:50x) |
| R053 | 28830 | SMD Widerstand 220R 5% 1206 (MOQ:50x) | SMD resistor 220R 5% 1206 (MOQ:50x) |
| R054 | 28687 | SMD Widerstand 120R 5% 1206 (MOQ:50x) | SMD resistor 120R 5% 1206 (MOQ:50x) |
| R055 | 28687 | SMD Widerstand 120R 5% 1206 (MOQ:50x) | SMD resistor 120R 5% 1206 (MOQ:50x) |
| R056 | 19505 | SMD Widerstand 10k 5% 1206 (MOQ:50x)  | SMD resistor 10k 5% 1206 (MOQ:50x)  |
| R057 | 19517 | SMD Widerstand 10R 5% 1206 (MOQ:50x)  | SMD resistor 10R 5% 1206 (MOQ:50x)  |
| R058 | 19517 | SMD Widerstand 10R 5% 1206 (MOQ:50x)  | SMD resistor 10R 5% 1206 (MOQ:50x)  |
| R059 | 19517 | SMD Widerstand 10R 5% 1206 (MOQ:50x)  | SMD resistor 10R 5% 1206 (MOQ:50x)  |
| R060 | 28687 | SMD Widerstand 120R 5% 1206 (MOQ:50x) | SMD resistor 120R 5% 1206 (MOQ:50x) |
| R061 | 19505 | SMD Widerstand 10k 5% 1206 (MOQ:50x)  | SMD resistor 10k 5% 1206 (MOQ:50x)  |
| R063 | 28687 | SMD Widerstand 120R 5% 1206 (MOQ:50x) | SMD resistor 120R 5% 1206 (MOQ:50x) |
| R064 | 28830 | SMD Widerstand 220R 5% 1206 (MOQ:50x) | SMD resistor 220R 5% 1206 (MOQ:50x) |
| R065 | 28830 | SMD Widerstand 220R 5% 1206 (MOQ:50x) | SMD resistor 220R 5% 1206 (MOQ:50x) |
| R066 | 19467 | SMD Widerstand 3k3 5% 1206 (MOQ:50x)  | SMD resistor 3k3 5% 1206 (MOQ:50x)  |
| R067 | 37187 | SMD Widerstand 47R 10% 1206 (MOQ:50x) | SMD resistor 47R 10% 1206 (MOQ:50x) |
| R068 | 28532 | SMD Widerstand 47k 5% 1206 (MOQ:50x)  | SMD resistor 47k 5% 1206 (MOQ:50x)  |
| R069 | 19469 | SMD Widerstand 56k 5% 1206 (MOQ:50x)  | SMD resistor 56k 5% 1206 (MOQ:50x)  |
| R070 | 28688 | SMD Widerstand 390R 5% 1206 (MOQ:50x) | SMD resistor 390R 5% 1206 (MOQ:50x) |
| R071 | 29184 | SMD Widerstand 560R 5% 1206 (MOQ:50x) | SMD resistor 560R 5% 1206 (MOQ:50x) |
| R072 | 19682 | SMD Widerstand 820R 5% 1206 (MOQ:50x) | SMD resistor 820R 5% 1206 (MOQ:50x) |
| R073 | 19505 | SMD Widerstand 10k 5% 1206 (MOQ:50x)  | SMD resistor 10k 5% 1206 (MOQ:50x)  |
| R074 | 29186 | SMD Widerstand 68k 5% 1206 (MOQ:50x)  | SMD resistor 68k 5% 1206 (MOQ:50x)  |
| R075 | 28742 | SMD Widerstand 56R 5% 1206 (MOQ:50x)  | SMD resistor 56R 5% 1206 (MOQ:50x)  |
| R076 | 19470 | SMD Widerstand 100k 5% 1206 (MOQ:50x) | SMD resistor 100k 5% 1206 (MOQ:50x) |
| R077 | 19505 | SMD Widerstand 10k 5% 1206 (MOQ:50x)  | SMD resistor 10k 5% 1206 (MOQ:50x)  |
| R078 | 28814 | SMD Widerstand 18k 5% 1206 (MOQ:50x)  | SMD resistor 18k 5% 1206 (MOQ:50x)  |
| R079 | 19469 | SMD Widerstand 56k 5% 1206 (MOQ:50x)  | SMD resistor 56k 5% 1206 (MOQ:50x)  |
| R080 | 19466 | SMD Widerstand 22k 5% 1206 (MOQ:50x)  | SMD resistor 22k 5% 1206 (MOQ:50x)  |
| R081 | 19465 | SMD Widerstand 1k 5% 1206 (MOQ:50x)   | SMD resistor 1k 5% 1206 (MOQ:50x)   |
| R082 | 28688 | SMD Widerstand 390R 5% 1206 (MOQ:50x) | SMD resistor 390R 5% 1206 (MOQ:50x) |
| R083 | 28688 | SMD Widerstand 390R 5% 1206 (MOQ:50x) | SMD resistor 390R 5% 1206 (MOQ:50x) |
| R084 | 19505 | SMD Widerstand 10k 5% 1206 (MOQ:50x)  | SMD resistor 10k 5% 1206 (MOQ:50x)  |
| R085 | 29186 | SMD Widerstand 68k 5% 1206 (MOQ:50x)  | SMD resistor 68k 5% 1206 (MOQ:50x)  |

| POS  | IDENT | BEZEICHNUNG                           | DESCRIPTION                         |
|------|-------|---------------------------------------|-------------------------------------|
| R086 | 33087 | SMD Widerstand 33R 5% 1206 (MOQ:50x)  | SMD resistor 33R 5% 1206 (MOQ:50x)  |
| R087 | 19505 | SMD Widerstand 10k 5% 1206 (MOQ:50x)  | SMD resistor 10k 5% 1206 (MOQ:50x)  |
| R088 | 19505 | SMD Widerstand 10k 5% 1206 (MOQ:50x)  | SMD resistor 10k 5% 1206 (MOQ:50x)  |
| R089 | 32246 | SMD Widerstand 15k 5% 1206 (MOQ:50x)  | SMD resistor 15k 5% 1206 (MOQ:50x)  |
| R090 | 28742 | SMD Widerstand 56R 5% 1206 (MOQ:50x)  | SMD resistor 56R 5% 1206 (MOQ:50x)  |
| R091 | 19475 | SMD Widerstand 10M 10% 1206 (MOQ:50x) | SMD resistor 10M 10% 1206 (MOQ:50x) |
| R092 | 28833 | SMD Widerstand 470k 5% 1206 (MOQ:50x) | SMD resistor 470k 5% 1206 (MOQ:50x) |
| R093 | 19467 | SMD Widerstand 3k3 5% 1206 (MOQ:50x)  | SMD resistor 3k3 5% 1206 (MOQ:50x)  |
| R094 | 19472 | SMD Widerstand 220k 5% 1206 (MOQ:50x) | SMD resistor 220k 5% 1206 (MOQ:50x) |
| R095 | 28833 | SMD Widerstand 470k 5% 1206 (MOQ:50x) | SMD resistor 470k 5% 1206 (MOQ:50x) |
| R096 | 19507 | SMD Widerstand 33k 5% 1206 (MOQ:50x)  | SMD resistor 33k 5% 1206 (MOQ:50x)  |
| R097 | 19475 | SMD Widerstand 10M 10% 1206 (MOQ:50x) | SMD resistor 10M 10% 1206 (MOQ:50x) |
| R098 | 19505 | SMD Widerstand 10k 5% 1206 (MOQ:50x)  | SMD resistor 10k 5% 1206 (MOQ:50x)  |
| R099 | 29104 | SMD Widerstand 12k 5% 0805 (MOQ:50x)  | SMD resistor 12k 5% 0805 (MOQ:50x)  |
| R100 | 29107 | SMD Widerstand 47k 5% 0805 (MOQ:50x)  | SMD resistor 47k 5% 0805 (MOQ:50x)  |
| R101 | 29107 | SMD Widerstand 47k 5% 0805 (MOQ:50x)  | SMD resistor 47k 5% 0805 (MOQ:50x)  |
| R102 | 28690 | SMD Widerstand 68k 5% 1206 (MOQ:50x)  | SMD resistor 68k 5% 1206 (MOQ:50x)  |
| R103 | 37807 | SMD Widerstand 47M 5% 1206 (MOQ:50x)  | SMD resistor 47M 5% 1206 (MOQ:50x)  |
| R104 | 19470 | SMD Widerstand 100k 5% 1206 (MOQ:50x) | SMD resistor 100k 5% 1206 (MOQ:50x) |
| R105 | 28814 | SMD Widerstand 18k 5% 1206 (MOQ:50x)  | SMD resistor 18k 5% 1206 (MOQ:50x)  |
| R106 | 28743 | SMD Widerstand 100R 5% 1206 (MOQ:50x) | SMD resistor 100R 5% 1206 (MOQ:50x) |
| R107 | 28743 | SMD Widerstand 100R 5% 1206 (MOQ:50x) | SMD resistor 100R 5% 1206 (MOQ:50x) |
| R108 | 33087 | SMD Widerstand 33R 5% 1206 (MOQ:50x)  | SMD resistor 33R 5% 1206 (MOQ:50x)  |
| R109 | 19465 | SMD Widerstand 1k 5% 1206 (MOQ:50x)   | SMD resistor 1k 5% 1206 (MOQ:50x)   |
| R110 | 29186 | SMD Widerstand 68k 5% 1206 (MOQ:50x)  | SMD resistor 68k 5% 1206 (MOQ:50x)  |
| R111 | 29167 | SMD Widerstand 22k 5% 0805 (MOQ:50x)  | SMD resistor 22k 5% 0805 (MOQ:50x)  |
| R201 | 19466 | SMD Widerstand 22k 5% 1206 (MOQ:50x)  | SMD resistor 22k 5% 1206 (MOQ:50x)  |
| R202 | 19466 | SMD Widerstand 22k 5% 1206 (MOQ:50x)  | SMD resistor 22k 5% 1206 (MOQ:50x)  |
| R203 | 19465 | SMD Widerstand 1k 5% 1206 (MOQ:50x)   | SMD resistor 1k 5% 1206 (MOQ:50x)   |
| R204 | 19465 | SMD Widerstand 1k 5% 1206 (MOQ:50x)   | SMD resistor 1k 5% 1206 (MOQ:50x)   |
| R205 | 19465 | SMD Widerstand 1k 5% 1206 (MOQ:50x)   | SMD resistor 1k 5% 1206 (MOQ:50x)   |
| R206 | 28532 | SMD Widerstand 47k 5% 1206 (MOQ:50x)  | SMD resistor 47k 5% 1206 (MOQ:50x)  |
| R207 | 19465 | SMD Widerstand 1k 5% 1206 (MOQ:50x)   | SMD resistor 1k 5% 1206 (MOQ:50x)   |
| R208 | 19507 | SMD Widerstand 33k 5% 1206 (MOQ:50x)  | SMD resistor 33k 5% 1206 (MOQ:50x)  |
| R209 | 32246 | SMD Widerstand 15k 5% 1206 (MOQ:50x)  | SMD resistor 15k 5% 1206 (MOQ:50x)  |
| R210 | 32246 | SMD Widerstand 15k 5% 1206 (MOQ:50x)  | SMD resistor 15k 5% 1206 (MOQ:50x)  |
| R211 | 19465 | SMD Widerstand 1k 5% 1206 (MOQ:50x)   | SMD resistor 1k 5% 1206 (MOQ:50x)   |
| R212 | 28689 | SMD Widerstand 39k 5% 1206 (MOQ:50x)  | SMD resistor 39k 5% 1206 (MOQ:50x)  |
| R213 | 37807 | SMD Widerstand 47M 5% 1206 (MOQ:50x)  | SMD resistor 47M 5% 1206 (MOQ:50x)  |
| R214 | 28833 | SMD Widerstand 470k 5% 1206 (MOQ:50x) | SMD resistor 470k 5% 1206 (MOQ:50x) |
| R215 | 19470 | SMD Widerstand 100k 5% 1206 (MOQ:50x) | SMD resistor 100k 5% 1206 (MOQ:50x) |
| R216 | 40580 | SMD Widerstand 680k 5% 1206 (MOQ:50x) | SMD resistor 680k 5% 1206 (MOQ:50x) |
| R217 | 19506 | SMD Widerstand 22k 5% 1206 (MOQ:50x)  | SMD resistor 22k 5% 1206 (MOQ:50x)  |
| R218 | 19506 | SMD Widerstand 22k 5% 1206 (MOQ:50x)  | SMD resistor 22k 5% 1206 (MOQ:50x)  |
| R219 | 19465 | SMD Widerstand 1k 5% 1206 (MOQ:50x)   | SMD resistor 1k 5% 1206 (MOQ:50x)   |
| R220 | 32115 | SMD Widerstand 1M 5% 1206 (MOQ:50x)   | SMD resistor 1M 5% 1206 (MOQ:50x)   |
| R221 | 28831 | SMD Widerstand 180k 5% 1206 (MOQ:50x) | SMD resistor 180k 5% 1206 (MOQ:50x) |
| R222 | 28532 | SMD Widerstand 47k 5% 1206 (MOQ:50x)  | SMD resistor 47k 5% 1206 (MOQ:50x)  |
| R223 | 28532 | SMD Widerstand 47k 5% 1206 (MOQ:50x)  | SMD resistor 47k 5% 1206 (MOQ:50x)  |
| R224 | 28532 | SMD Widerstand 47k 5% 1206 (MOQ:50x)  | SMD resistor 47k 5% 1206 (MOQ:50x)  |
| R225 | 19505 | SMD Widerstand 10k 5% 1206 (MOQ:50x)  | SMD resistor 10k 5% 1206 (MOQ:50x)  |
| R226 | 28532 | SMD Widerstand 47k 5% 1206 (MOQ:50x)  | SMD resistor 47k 5% 1206 (MOQ:50x)  |
| R227 | 23725 | Widerstand 274R 1% 0207               | Resistor 274R 1% 0207               |
| R301 | 19505 | SMD Widerstand 10k 5% 1206 (MOQ:50x)  | SMD resistor 10k 5% 1206 (MOQ:50x)  |
| R302 | 19505 | SMD Widerstand 10k 5% 1206 (MOQ:50x)  | SMD resistor 10k 5% 1206 (MOQ:50x)  |
| S002 | 32906 | Druckschalter                         | Press switch                        |
| T001 | 24134 | SMD Transistor BFS20, SOT23           | SMD transistor BFS20 SOT23          |
| T002 | 24134 | SMD Transistor BFS20, SOT23           | SMD transistor BFS20 SOT23          |
| T003 | 32881 | Transistor BFS19 SOT23                | Transistor BFS19 SOT23              |
| T004 | 32467 | SMD Transistor BC850B SOT 23          | SMD transistor BC850B SOT23         |
| T005 | 34469 | N-Kanal FET BFT46 SOT23               | N channel FET BFT46 SOT23           |
| T006 | 32468 | SMD Transistor BC860B SOT23           | SMD transistor BC860B SOT23         |
| T007 | 32467 | SMD Transistor BC850B SOT 23          | SMD transistor BC850B SOT23         |
| T008 | 32468 | SMD Transistor BC860B SOT23           | SMD transistor BC860B SOT23         |
| T009 | 32467 | SMD Transistor BC850B SOT 23          | SMD transistor BC850B SOT23         |
| T010 | 32468 | SMD Transistor BC860B SOT23           | SMD transistor BC860B SOT23         |
| T011 | 32468 | SMD Transistor BC860B SOT23           | SMD transistor BC860B SOT23         |
| T012 | 32468 | SMD Transistor BC860B SOT23           | SMD transistor BC860B SOT23         |
| T013 | 32467 | SMD Transistor BC850B SOT 23          | SMD transistor BC850B SOT23         |
| T014 | 32468 | SMD Transistor BC860B SOT23           | SMD transistor BC860B SOT23         |
| T015 | 32467 | SMD Transistor BC850B SOT 23          | SMD transistor BC850B SOT23         |
| T201 | 32467 | SMD Transistor BC850B SOT 23          | SMD transistor BC850B SOT23         |
| T202 | 32467 | SMD Transistor BC850B SOT 23          | SMD transistor BC850B SOT23         |

| POS   | IDENT | BEZEICHNUNG                     | DESCRIPTION                      |
|-------|-------|---------------------------------|----------------------------------|
| T203  | 34469 | N-Kanal FET BFT46 SOT23         | N channel FET BFT46 SOT23        |
| T204  | 32467 | SMD Transistor BC850B SOT 23    | SMD transistor BC850B SOT23      |
| TR001 | 40590 | Transformator, NF 1:1 Sym/Sym   | Transformer, RF 1:1 Sym/Sym      |
| VC001 | 37356 | Trimmkondensator 1,4/14pF NPO   | Capacitor, variable 1,4/14pF NPO |
| VC002 | 37356 | Trimmkondensator 1,4/14pF NPO   | Capacitor, variable 1,4/14pF NPO |
| VC003 | 37356 | Trimmkondensator 1,4/14pF NPO   | Capacitor, variable 1,4/14pF NPO |
| VC004 | 37356 | Trimmkondensator 1,4/14pF NPO   | Capacitor, variable 1,4/14pF NPO |
| VC005 | 37356 | Trimmkondensator 1,4/14pF NPO   | Capacitor, variable 1,4/14pF NPO |
| VC006 | 37356 | Trimmkondensator 1,4/14pF NPO   | Capacitor, variable 1,4/14pF NPO |
| ZZ010 | 52325 | Faltschachtel                   | Folding box                      |
| ZZ011 | 52323 | Einsatz                         | Insert                           |
| ZZ020 | 52326 | Bedienungsanleitung EM1005HDP   | Instructions for use EM1005HDP   |
| ZZ030 | 52156 | Service-Anleitung EM1005-90 HDP | Service manual EM1005-90 HDP     |