

# S13-1 SONY MODEL 8F-38W

## Removal of Rear Cabinet

- (1) Open the Battery Lid and take out the four Batteries.
- (2) Remove the six Screws marked with ☆ shown in Fig. 2.
- (3) Remove the AFC Button by pulling it out.
- (4) Remove the two Screws marked with ✖ shown in Fig. 3 and carefully remove the Rear Cabinet.
- (5) Unsolder the Red Lead at the Battery Positive Contact Plate coming from the Jack "AC IN".
- (6) Unsolder the Black Lead at the Battery Negative Spring coming from the AF Circuit Board.
- (7) Unsolder the Coaxial Cable at the Telescopic Antenna Terminal coming from the FM Tuner Circuit Board.
- (8) Take out the Rear Cabinet from the Main Cabinet.

## Removal of Chassis

- (1) Remove the Tuning, Volume Control and Tone Control Knobs by pulling them out.
- (2) Remove the two Bosses and two Screws marked with △ shown in Fig. 4.
- (3) Remove the two ON-OFF Power Switch Holding Nuts marked with △ shown in Fig. 4.
- (4) Unsolder the two Leads (a white and a black) at the speaker.
- (5) Unsolder the Black Lead at the Speaker coming from the AF Circuit Board.
- (6) Take out the Chassis from the Cabinet gently taking care not to cut the Leads.

## Removal of FM Tuner Circuit Board

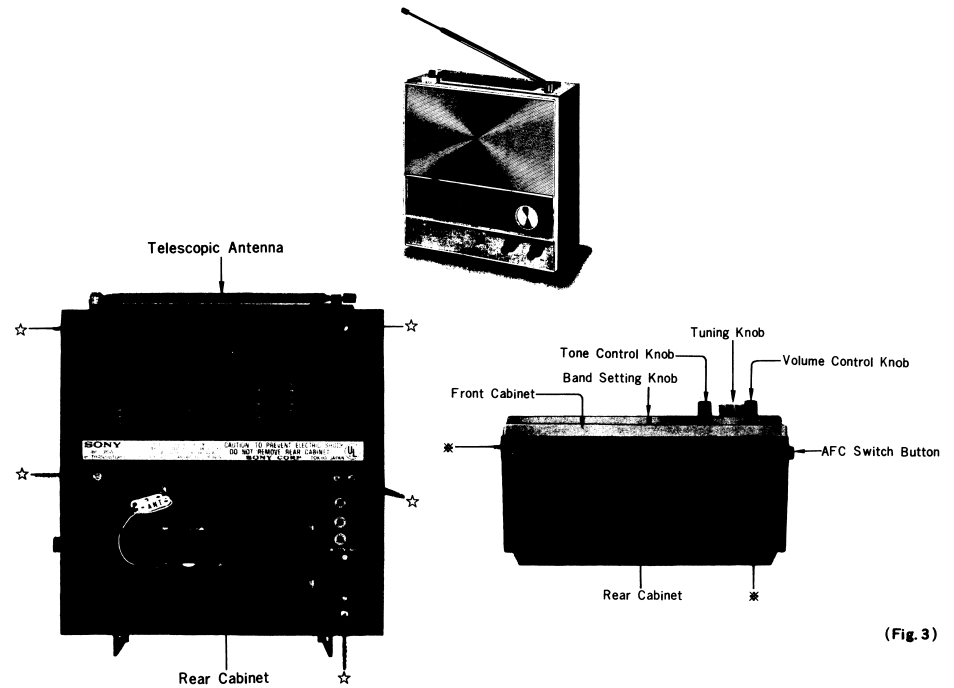
- (1) Remove the two Screws marked with □ shown in Fig. 4.
- (2) Unsolder the three Leads at the Tuning Capacitor marked with ■ shown in Fig. 4.
- (3) Unsolder the Brown Lead at the FM Tuner Circuit Board coming from the IF-AMC Circuit Board.

## Removal of IF-AMC Circuit Board

- (1) Remove the three Screws marked with ○ shown in Fig. 4.
- (2) Remove the Band Setting Switch Lever marked with ● shown in Fig. 4.

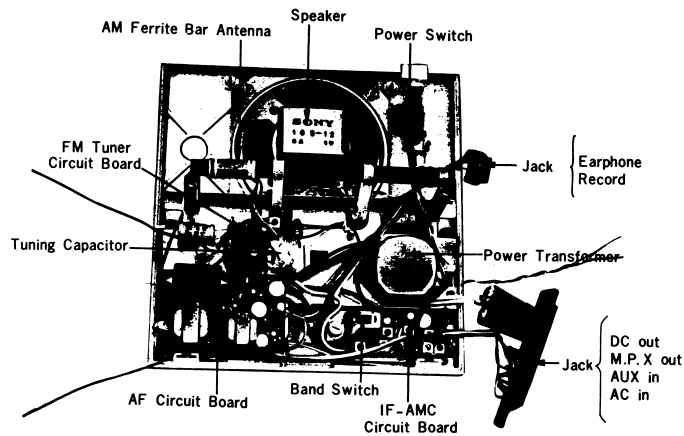
## Removal of AF Circuit Board

Remove the two Screws marked with ▲ shown in Fig. 4.

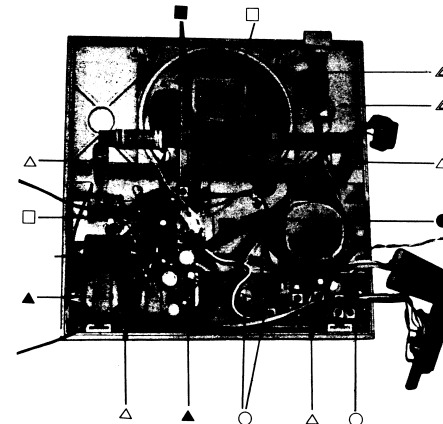


(Fig. 2)

(Fig. 3)



(Fig. 1)

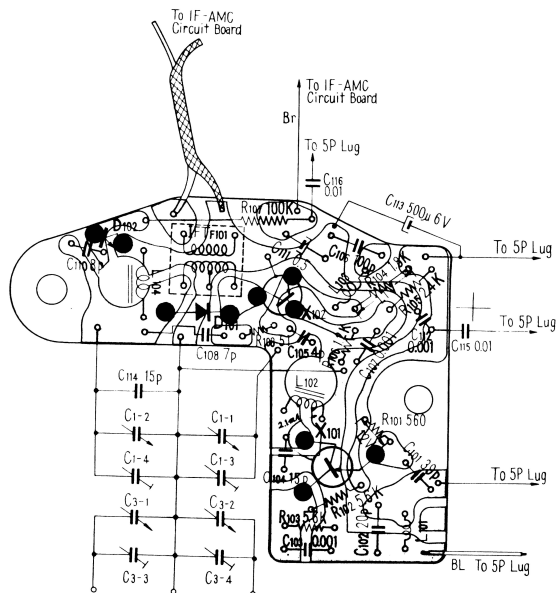


(Fig. 4)

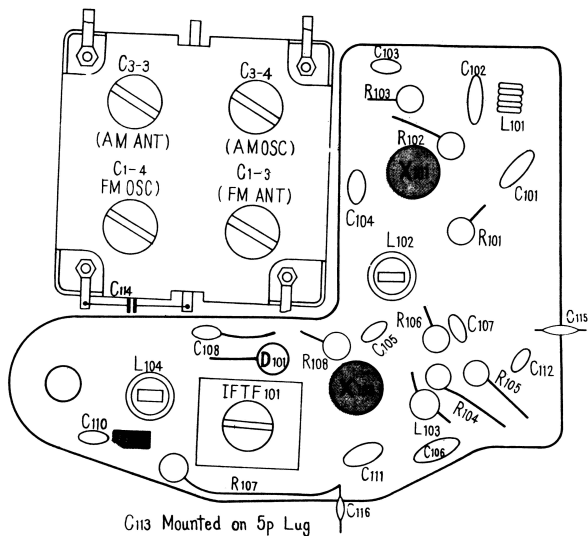


**Mounting Diagram**

— FM Tuner Section —  
— Printed Side —



— Parts Side —

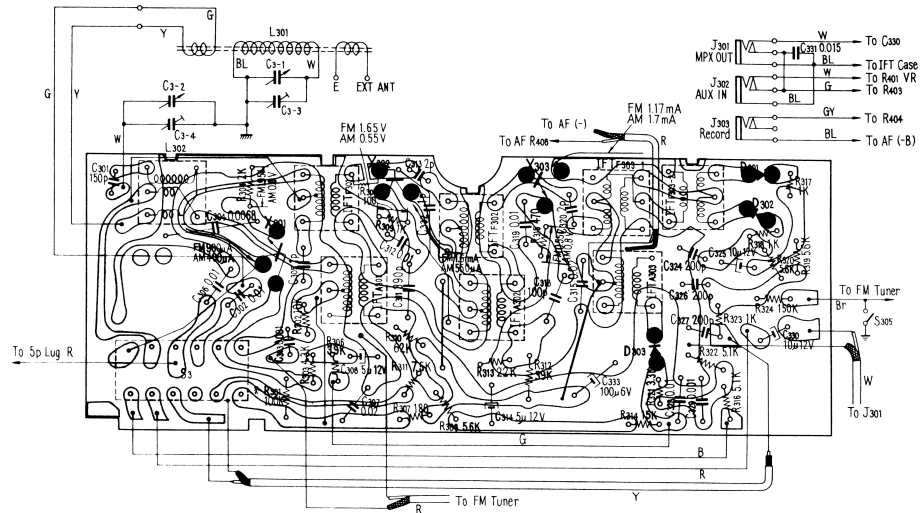


C113 Mounted on 5p Lug

SONY 8F-38W

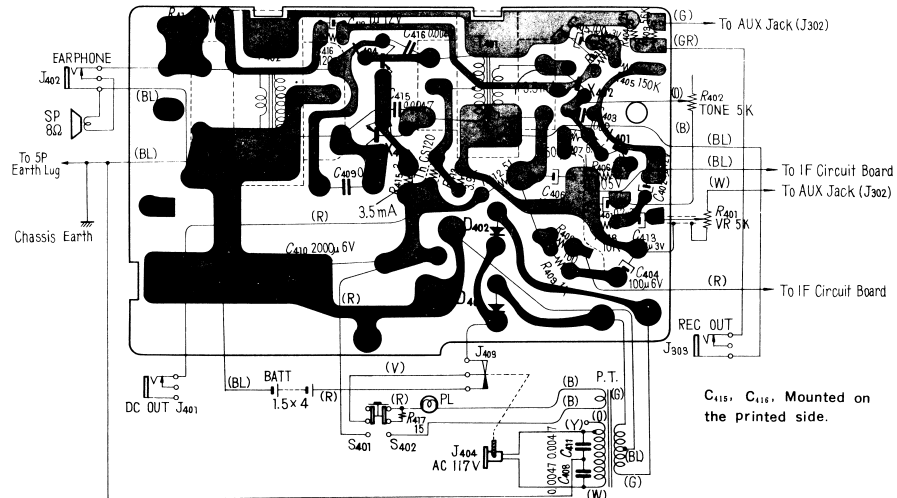
**Mounting Diagram**

IF - AMC  
— Printed Side —

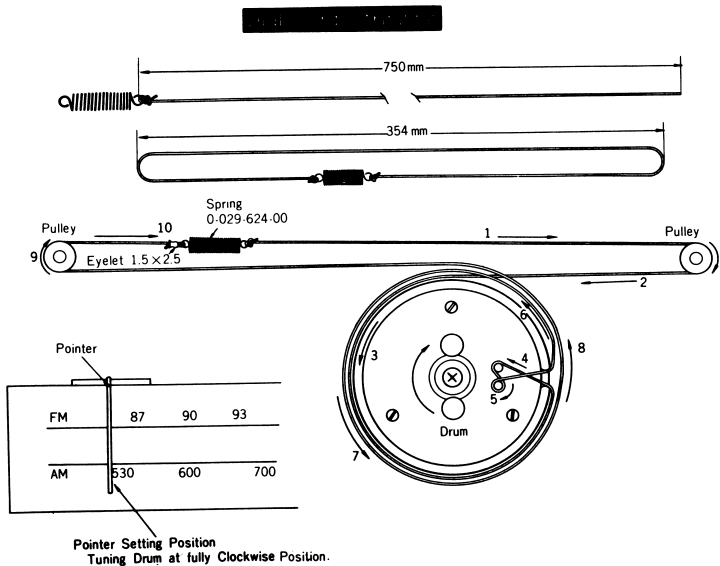


Mounting Diagram

AF Section  
—Printed Side—



C<sub>115</sub>, C<sub>116</sub>, Mounted on the printed side.



Pointer Setting Position  
Tuning Drum at fully Clockwise Position.

Frequency Coverage and Tracking Adjustment

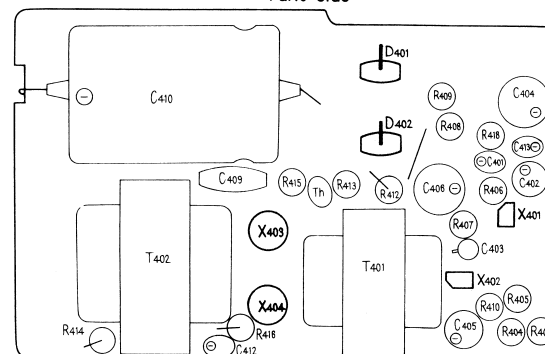
Adj. Item	SSG (Standard Signal Generator) Coupling	SSG Freq.	Receiver Dial Setting	Connect VTVM	Adjust	Remarks
FM Freq. Coverage		85.5 Mc (400c/s ±22.5 Kc FM)	Fully Left	Across 8 Ω Load Resistor	FM OSC Coil (L <sub>111</sub> )	Adjust for maximum meter reading. AFC Switch: OFF Volume Control: MAX. Tone Control: HIGH Power Supply: { DC 6V AC 117V
		109.5 Mc ( " )	Fully Right		FM OSC Trimmer (C <sub>1-1</sub> )	
FM Tracking	—ditto—	85.5 Mc ( " )	Tune to 85.5 Mc signal	—ditto—	FM RF Coil (L <sub>112</sub> )	—ditto—
		109.5 Mc ( " )	Tune to 109.5Mc signal		FM RF Trimmer (C <sub>1-2</sub> )	
AM Freq. Coverage	Loop Antenna	520 Kc (1000 c/s 30% AM)	Fully Left	—ditto—	AM OSC Coil (L <sub>121</sub> )	—ditto—
		1,680 Kc ( " )	Fully Right		AM OSC Trimmer (C <sub>2-1</sub> )	
AM Tracking	—ditto—	620 Kc ( " )	Tune to 620 Kc signal	—ditto—	AM ANT Coil (L <sub>311</sub> )	—ditto—
		1,400 Kc ( " )	Tune to 1,400Kc signal		AM ANT Trimmer (C <sub>2-2</sub> )	

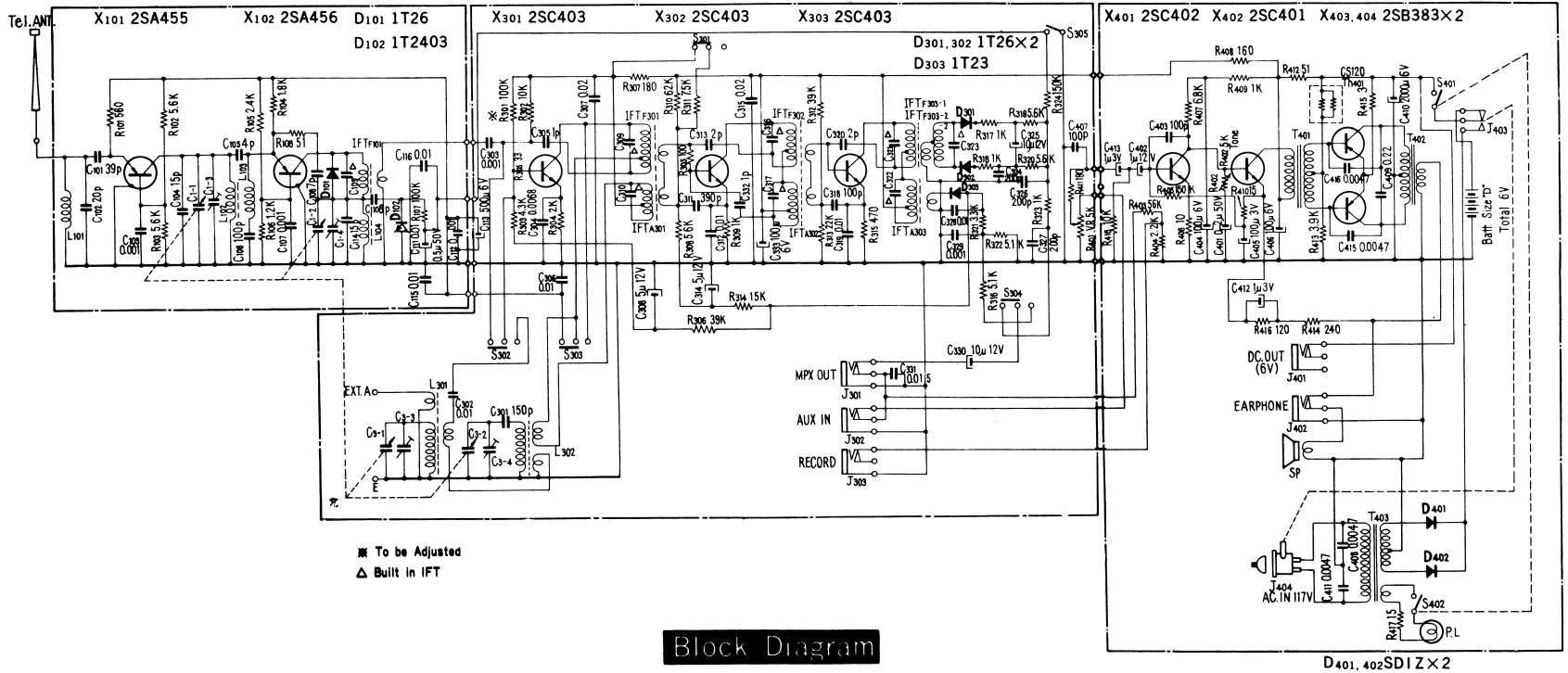
\* Dummy Antenna.

Unsolder the Coaxial Cable at the Telescopic Antenna terminal.

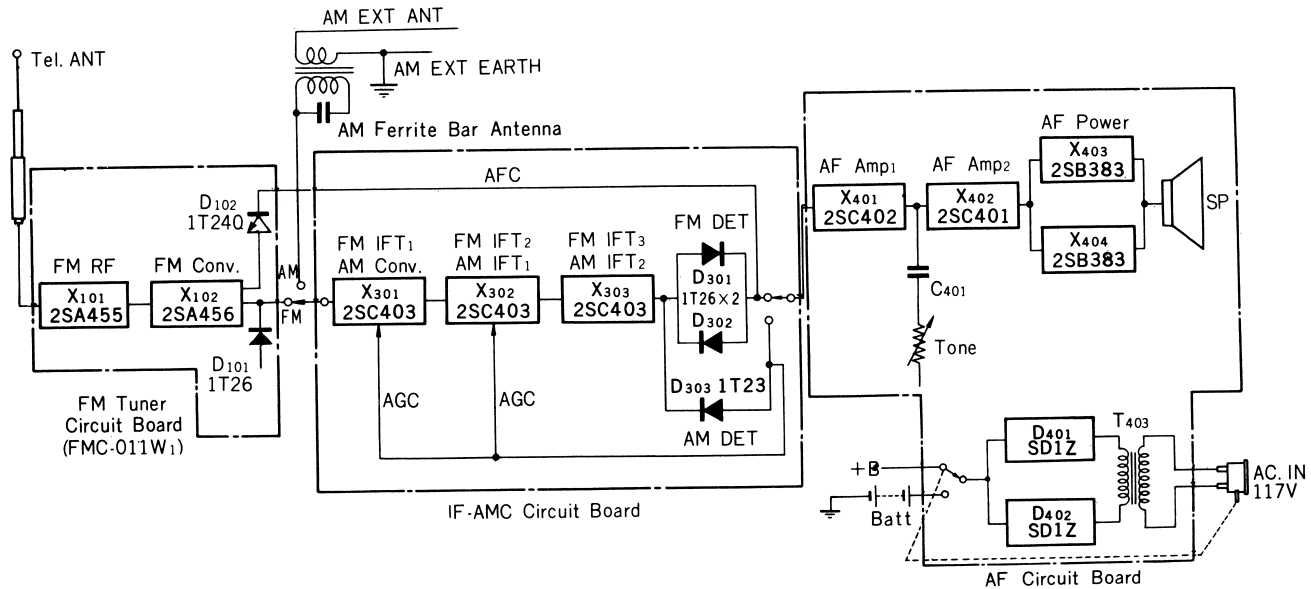
Connect the SSG to the Coaxial Cable and ground of the receiver through the Dummy Antenna.

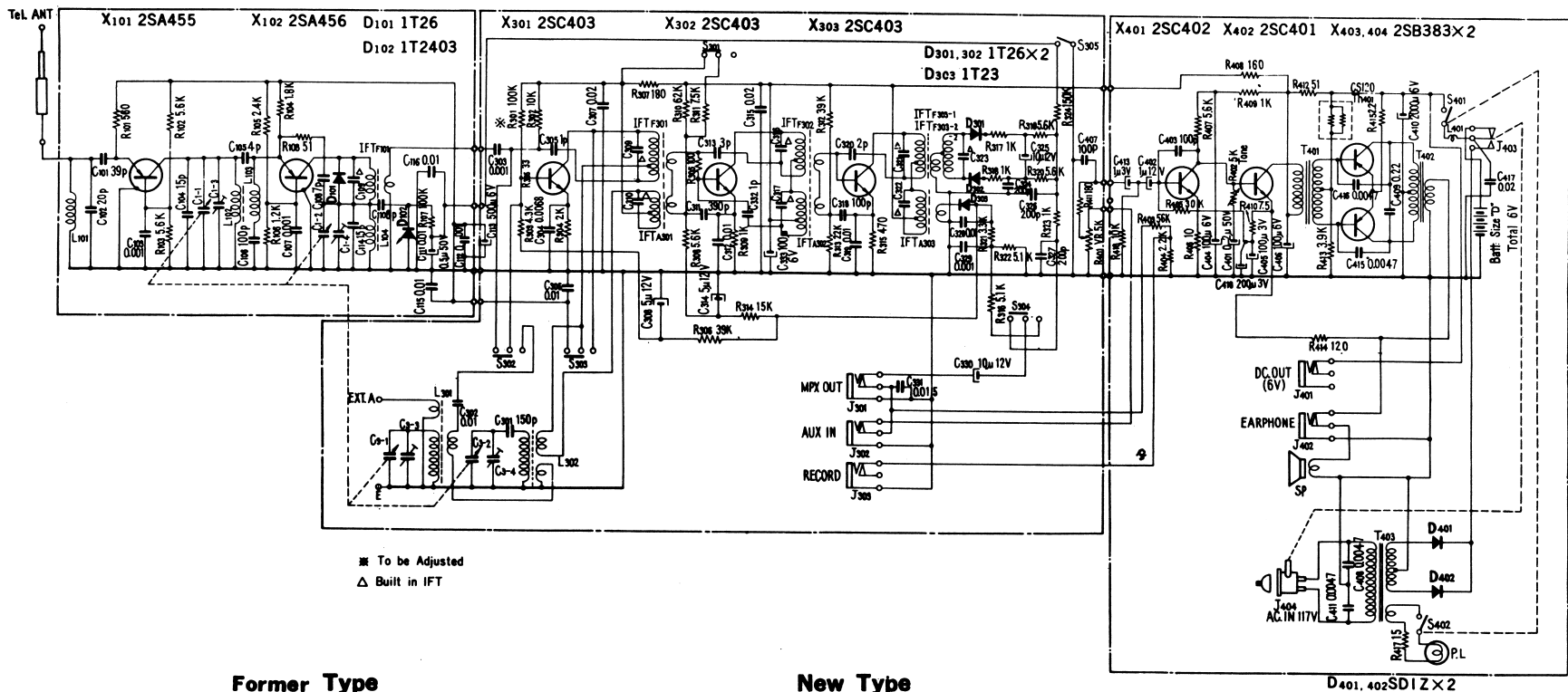
—Parts Side—





Block Diagram





Part No.	Symbol	Description
<b>Resistor</b>		
1-244-525-	R <sub>405</sub>	150KΩ ½W Carbon
-493-	R <sub>407</sub>	6.8KΩ " "
-429-	R <sub>410</sub>	15Ω " "
-458-	R <sub>411</sub>	240Ω " "
-412-	R <sub>415</sub>	3Ω " "
-451-	R <sub>416</sub>	120Ω " "
<b>Capacitor</b>		
1-101-952-	C <sub>313</sub>	2pF Ceramic
1-127-053-	C <sub>412</sub>	1μF 3V Alox
1-423-064-	T <sub>401</sub>	Transformer, driver
1-427-116-	T <sub>402</sub>	" output

Part No.	Symbol	Description
<b>Resistor</b>		
1-244-508-	R <sub>405</sub>	30KΩ ½W Carbon
-491-	R <sub>407</sub>	5.6KΩ " "
-422-	R <sub>410</sub>	7.5Ω " "
-451-	R <sub>411</sub>	120Ω " "
-409-	R <sub>415</sub>	2.2Ω " "
	R <sub>416</sub>	—deleted—
<b>Capacitor</b>		
1-101-953-	C <sub>313</sub>	3P Ceramic
	C <sub>412</sub>	—deleted—
1-423-077-	T <sub>401</sub>	Transformer, driver
1-427-225-	T <sub>402</sub>	" output

Part No.	Symbol	Description
<b>Capacitor</b>		
1-101-142-	C <sub>417</sub>	0.02μF Ceramic
1-121-294-	C <sub>418</sub>	200μF 3V Electrolytic
1-407-294-	L <sub>401</sub>	Inductor, micro