

BM-570

SERVICE MANUAL



*US Model
Canadian Model
AEP Model
UK Model
E Model*

Model Name Using Similar Mechanism	New Mechanism
Tape Transport Mechanism Type	MB-570

SPECIFICATIONS

Tape	MICROCASSETTE™ (normal position type)
Recording system	4-track 2-channel monaural
Speaker	About 2.8 cm (1 1/8 inches) dia.
Tape speed	2.4 cm/s (1 5/16 ips), 1.2 cm/s (1 1/32 ips)
Frequency response	250 to 4,000 Hz (at 2.4 cm/s)
Input	Microphone jack (mini jack) (PLUG IN POWER): Sensitivity 0.2 mV, for low impedance microphone
Output	Earphone jack (mini jack) for 8 to 300 ohm earphone
Power output	240mW (at 10% harmonic distortion)
Battery life	Continuous recording hours with the built-in microphone: About 6.5 hours (average) with alkaline batteries
Power requirements	3V DC two size AAA (R03) batteries, or Sony BP-43 rechargeable battery pack (not supplied) DC IN 3V jack accepts: —Sony AC-D2M AC power adaptor (not supplied) for use on 120V AC, 60 Hz —Sony DCC-70 car battery cord (not supplied) for use with 12V car battery
Dimensions	About 61.4 × 115.3 × 22.9 mm (w/h/d) (2 7/16 × 4 9/16 × 29/32 inches) including projecting parts and controls
Weight	About 170 g (6 oz) including batteries
Accessories supplied	Carrying case (1) Battery tube (1)

Design and specifications subject to change without notice.

Features

- Simple operation with a slide-type function lever.
- Electronic index signal recording/searching function for locating specific parts of a dictation.
- VOR (voice operated recording) system economizes on tapes, batteries and your time.
- Microphone sensitivity selector.
- Fast playback for quick review.
- Wide variety of power sources: batteries, rechargeable battery, AC house current, DC car battery.
- Three-digit tape counter for indexing the tape contents.
- Tape-end alarm

Note: Use only the recommended AC power adaptor or car battery cord manufactured by Sony. Polarity of the plugs of other manufactures may be different.



NOTES ON CHIP COMPONENT REPLACEMENT

- Never reuse a disconnected chip component.
- Notice that the minus side of a tantalum capacitor may be damaged by heat.



MICROCASSETTE™ DICTATOR
SONY®

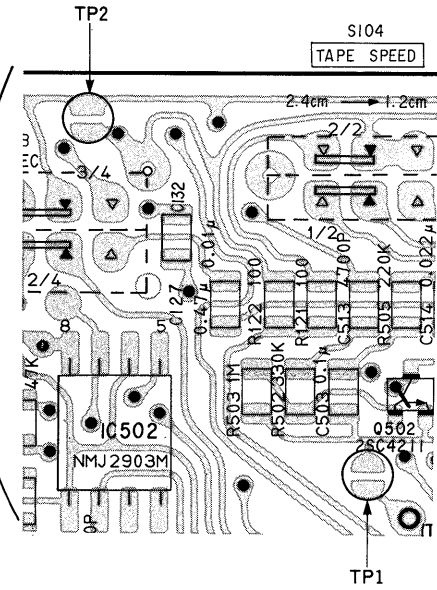
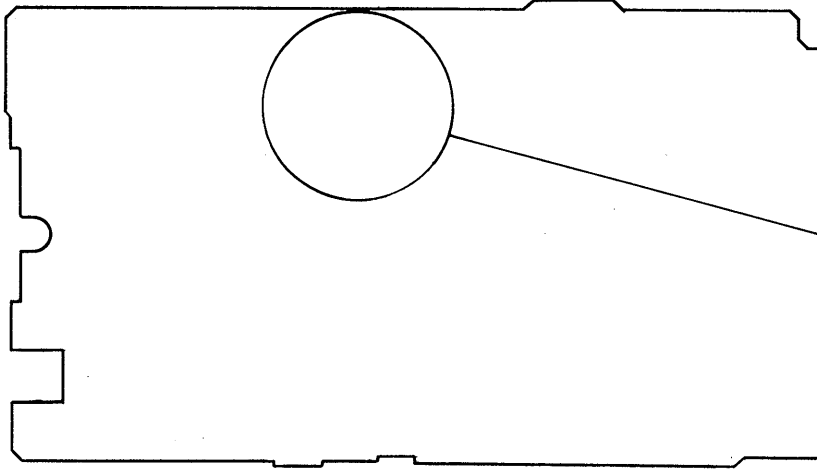
NOTE ON REPAIRING (SERVICE MODE)

Soldering TP1 or TP2 allows to check the movement of the mechanism deck or repairing on the condition that remove the main board from mechanism deck.

- TP1 : Soldering the pattern that stop the auto-off function
- TP2 : Soldering the Pattern that the state of S107 (FF/REW POWER) is ON.

Note) Setting to the your finger when select the record/playback (S102)

[MAIN BOARD]

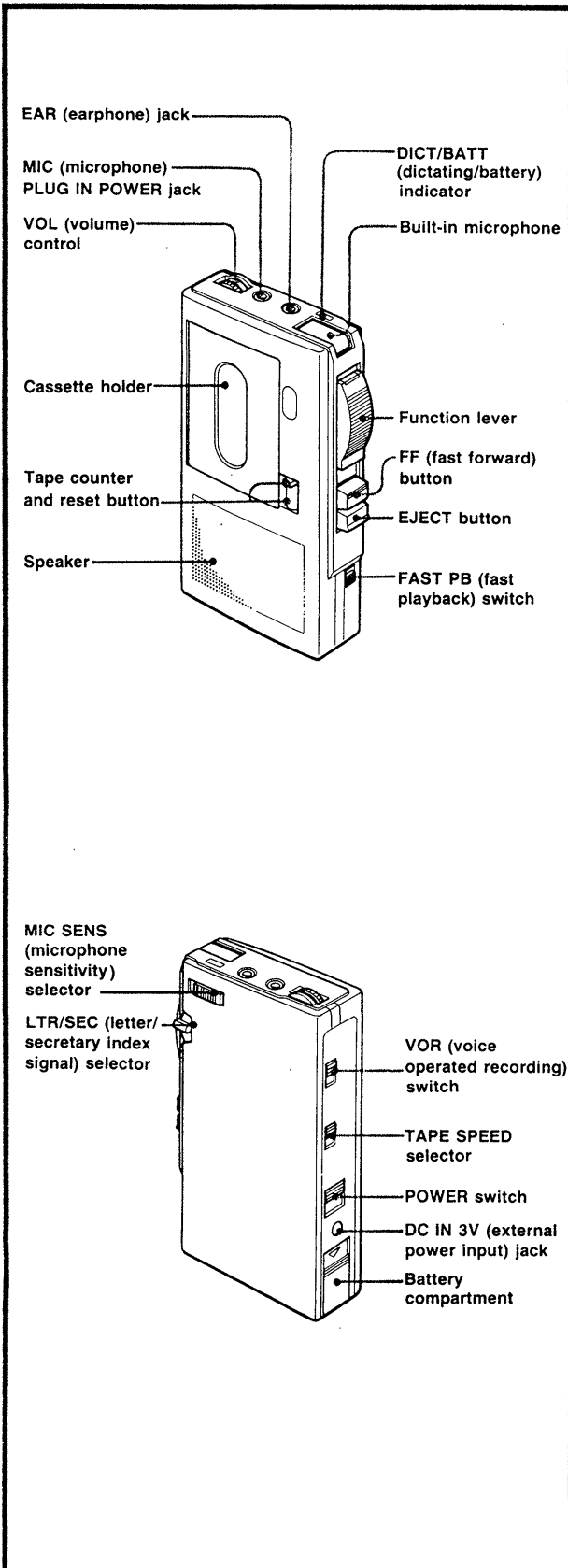


Note) Remove the solder bridge to finish repairing.

SECTION 1 GENERAL

This section is extracted from instruction manual.

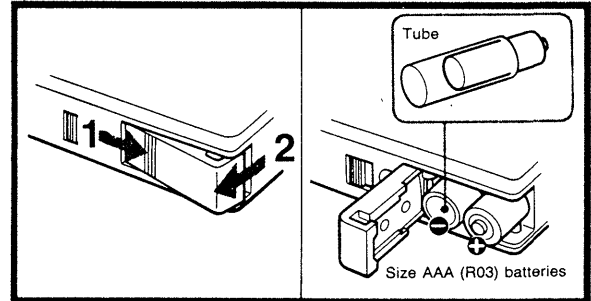
Parts Identification



Battery Installation

- Use two size AAA (R03) batteries:
Insert one battery into the supplied tube (used to avoid causing a short circuit), then install both batteries with correct polarity.
- If the DICT/BATT indicator glows faintly and the sound becomes distorted, the batteries have become weak. Insert a new set of batteries.

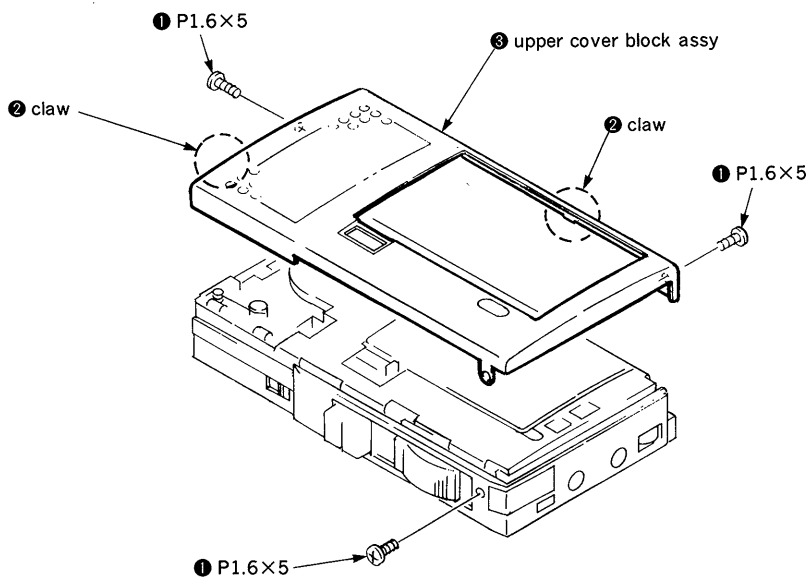
Note: If you operate the unit with the AC power adaptor or you will not use the unit for a long time, remove the batteries to prevent damage from battery leakage and corrosion.



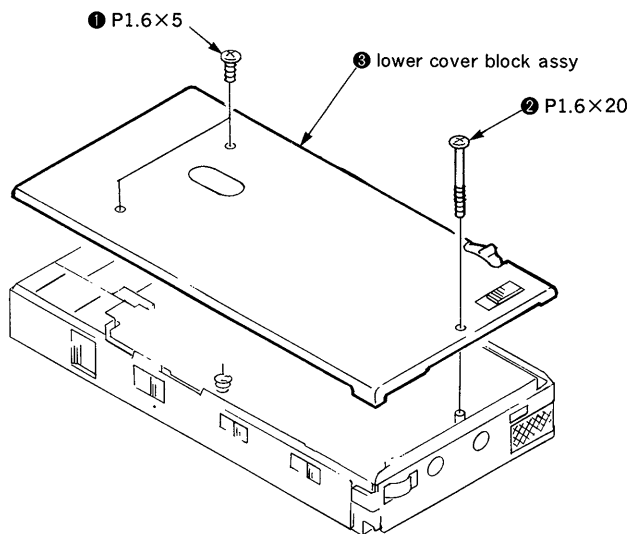
SECTION 2 DISASSEMBLY

• Follow the disassembly procedue in the numerical order given.

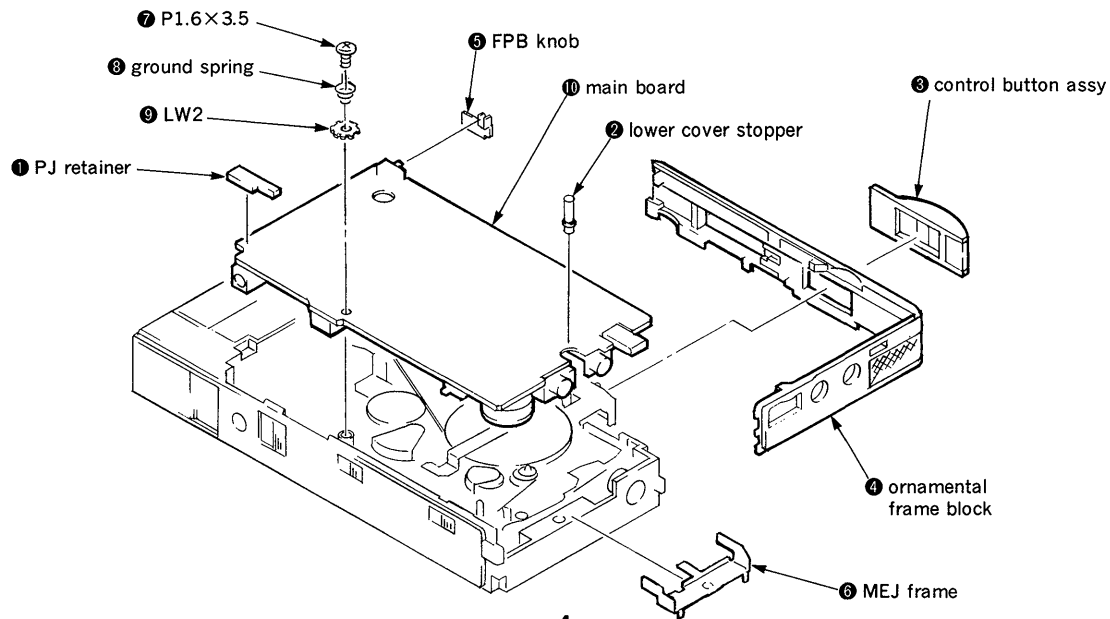
2-1. UPPER COVER BLOCK ASSY



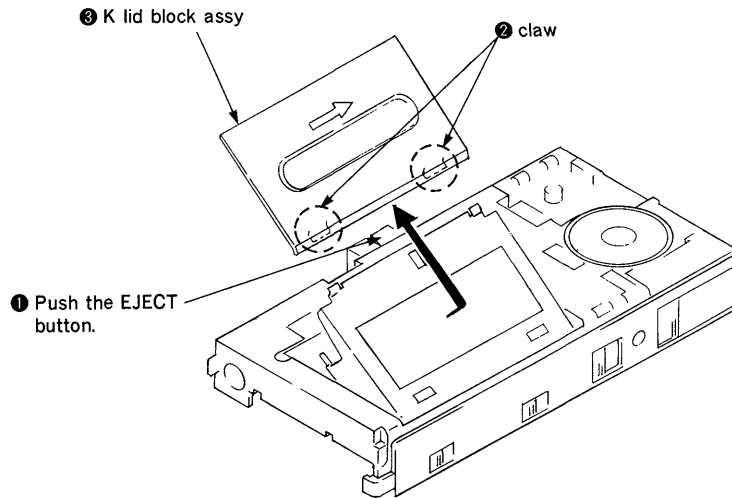
2-2. LOWER COVER BLOCK ASSY



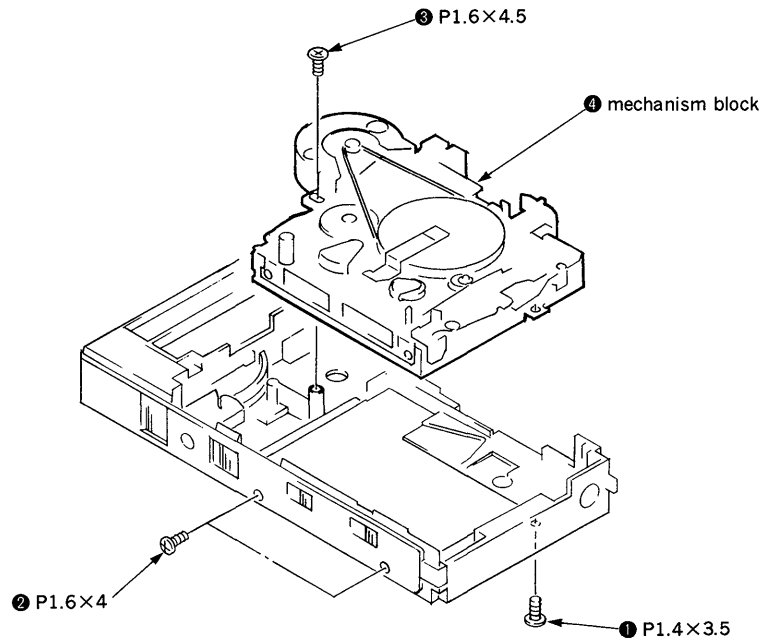
2-3. MAIN BOARD



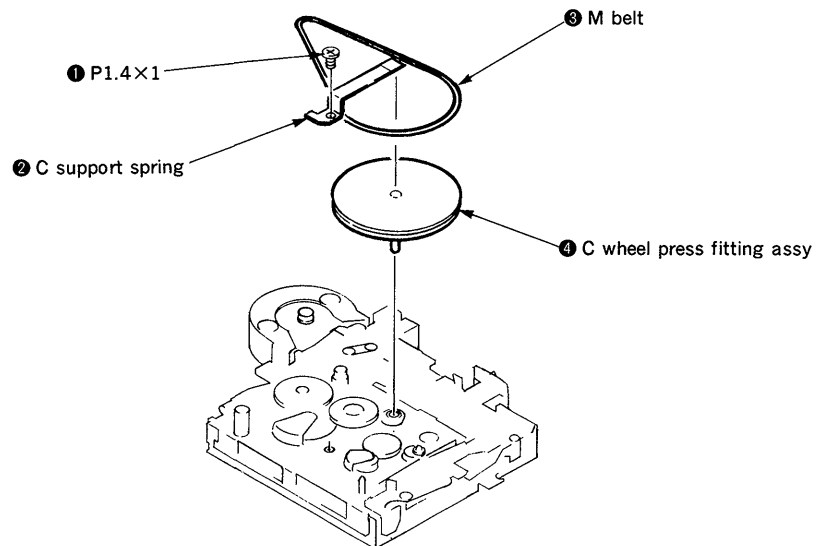
2-4. K LID BLOCK ASSY



2-5. MECHANISM BLOCK



2-6. C WHEEL PRESS FITTING ASSY



SECTION 3 MECHANICAL MEASUREMENT

PRECAUTION

1. Clean the following parts with a denatured-alcohol-moistened swab :

record/playback head	pinch roller
erase head	rubber belts
capstan	
2. Demagnetize the record/playback head with a head demagnetizer. (Do not bring the head demagnetizer close to the erase head.)
3. Do not use a magnetized screwdriver for the adjustments.
4. The adjustments should be performed with the rated power supply voltage unless otherwise noted.

Power supply voltage : 3Vdc
 TAPE SEPPE switch : 2.4cm/s

Torque Measurement

Torque	Meter Reading	Torque Meter
LISTEN	5-15g·cm (0.07-0.21 oz·inch)	CQ-103M
FF	mor than 30g·cm (mor than 0.42 oz·inch)	CQ-201M
BACK SPACE		

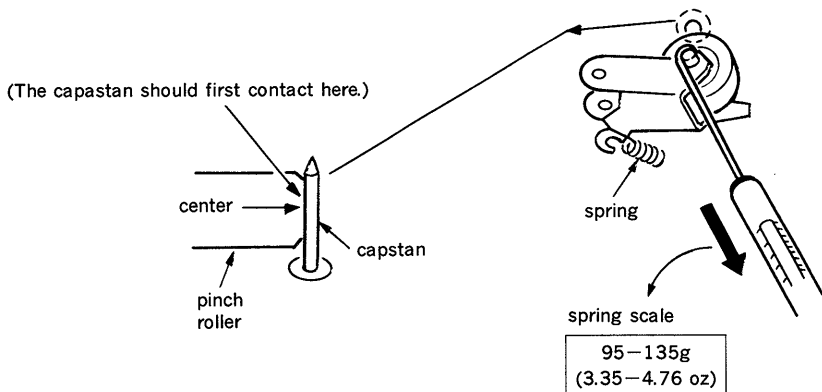
Tape Tension Measurement

Meter	Meter Reading
CQ-403M	more than 25g (mor than 0.88oz)

Pinch Roller Pressure Adjustment

— Playback Mode —

Slowly return the pinch roller and read the spring scale just when the pinch roller starts rotating.



SECTION 4 ELECTRICAL ADJUSTMENTS

Test tape

Type	Signal	Used for
S-2-A030	3kHz, -20dB	Head Azimuth Adjustment
WS-24	3kHz, -10dB	Tape Speed Adjustment

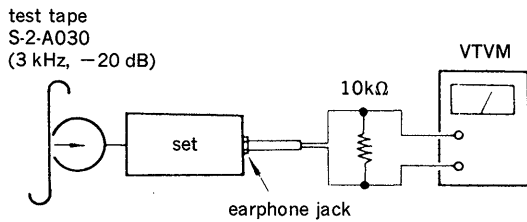
Record/playback Head Azimuth Adjustment

Setting :

VOL control : mechanical mid
 TAPE SPEED switch : 2.4 cm/s
 VOR switch : OFF
 FAST PB switch : OFF

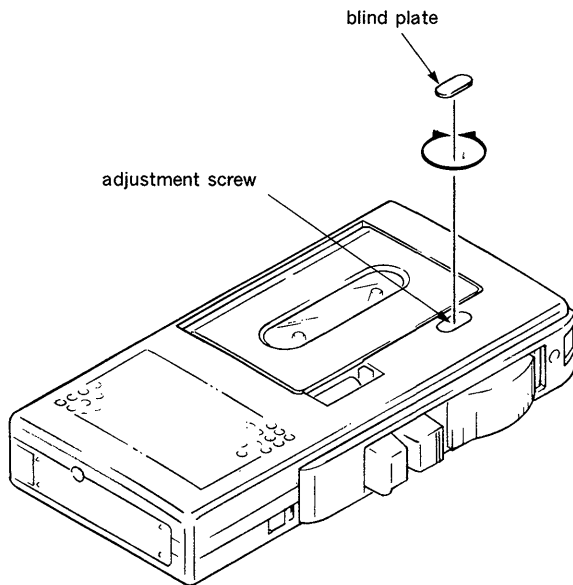
Procedure :

1. Mode : playback



2. Turn the adjustment screw to obtain the maximum reading on VTVM.
 Note: Several peaks may appear, but take the maximum.

Adjustment Location :



Tape Speed Adjustment

Setting :

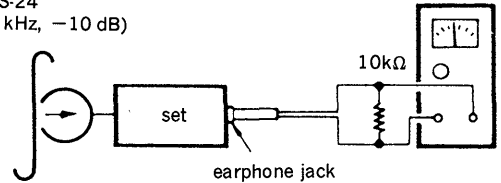
VOLUME control : mechanical mid
 VOR switch : OFF
 FAST PB switch : OFF

Procedure :

- Mode : playback

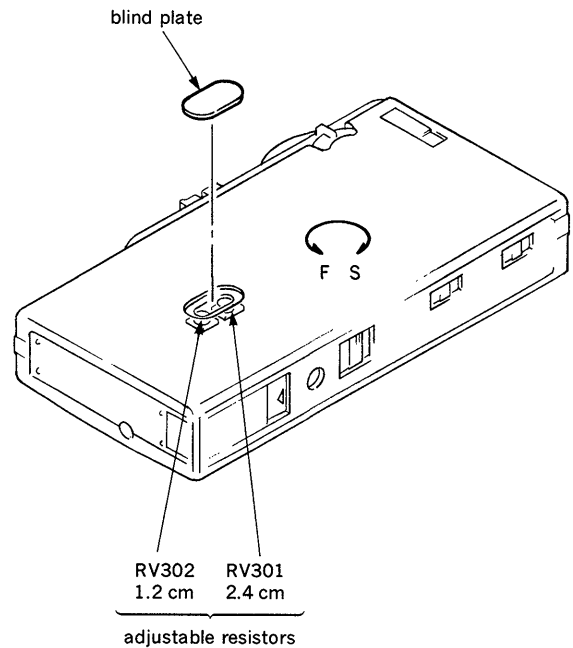
test tape
WS-24
(3 kHz, -10 dB)

speed checker
LFM-30
or
digital frequency
counter



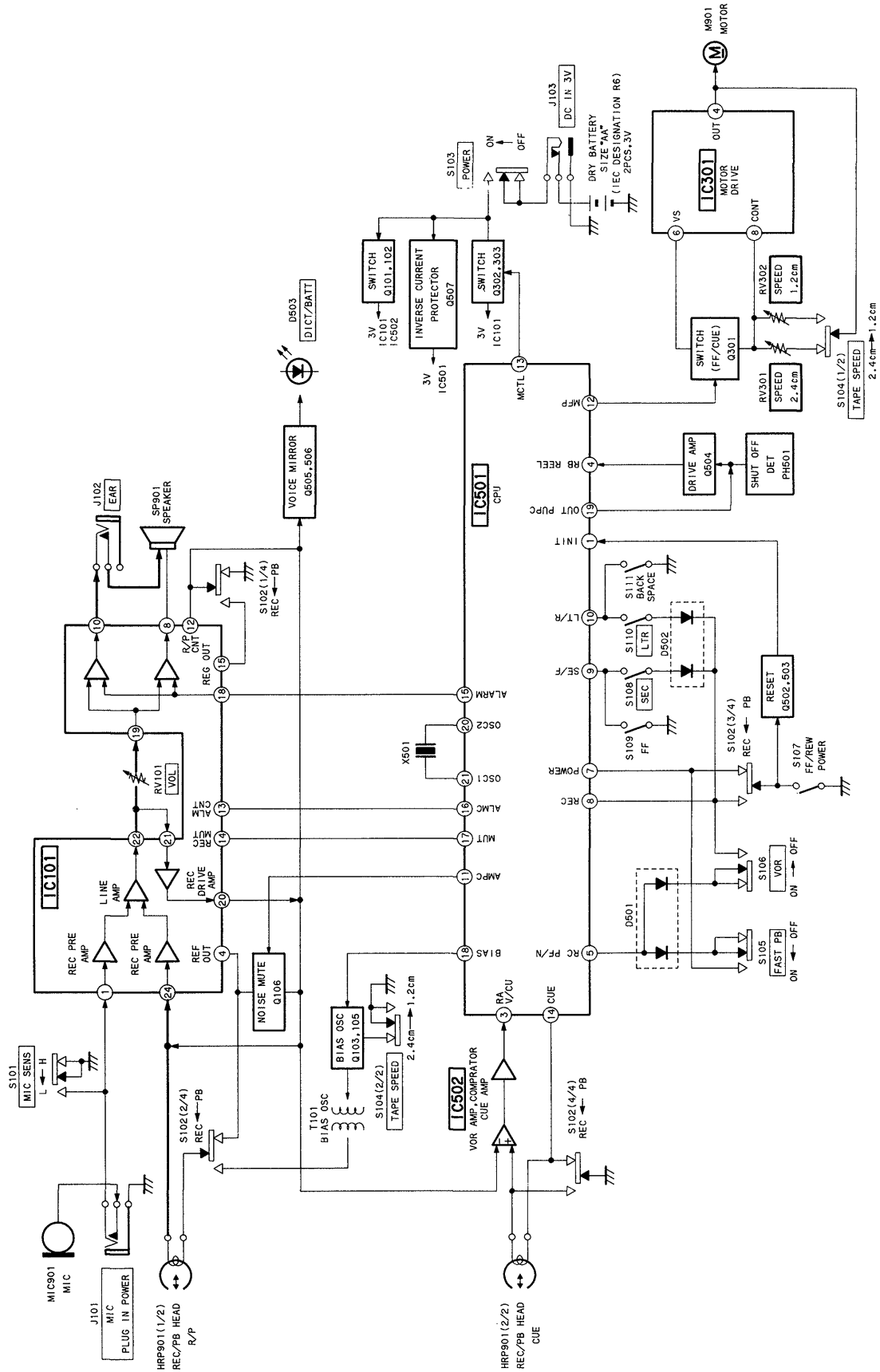
Tape speed	Speed checker	Digital frequency counter
2.4 cm/s	±0.5%	2,985-3,015 Hz
1.2 cm/s	±0.5%	1,492-1,508 Hz

Adjustment Location :



SECTION 5 DIAGRAMS

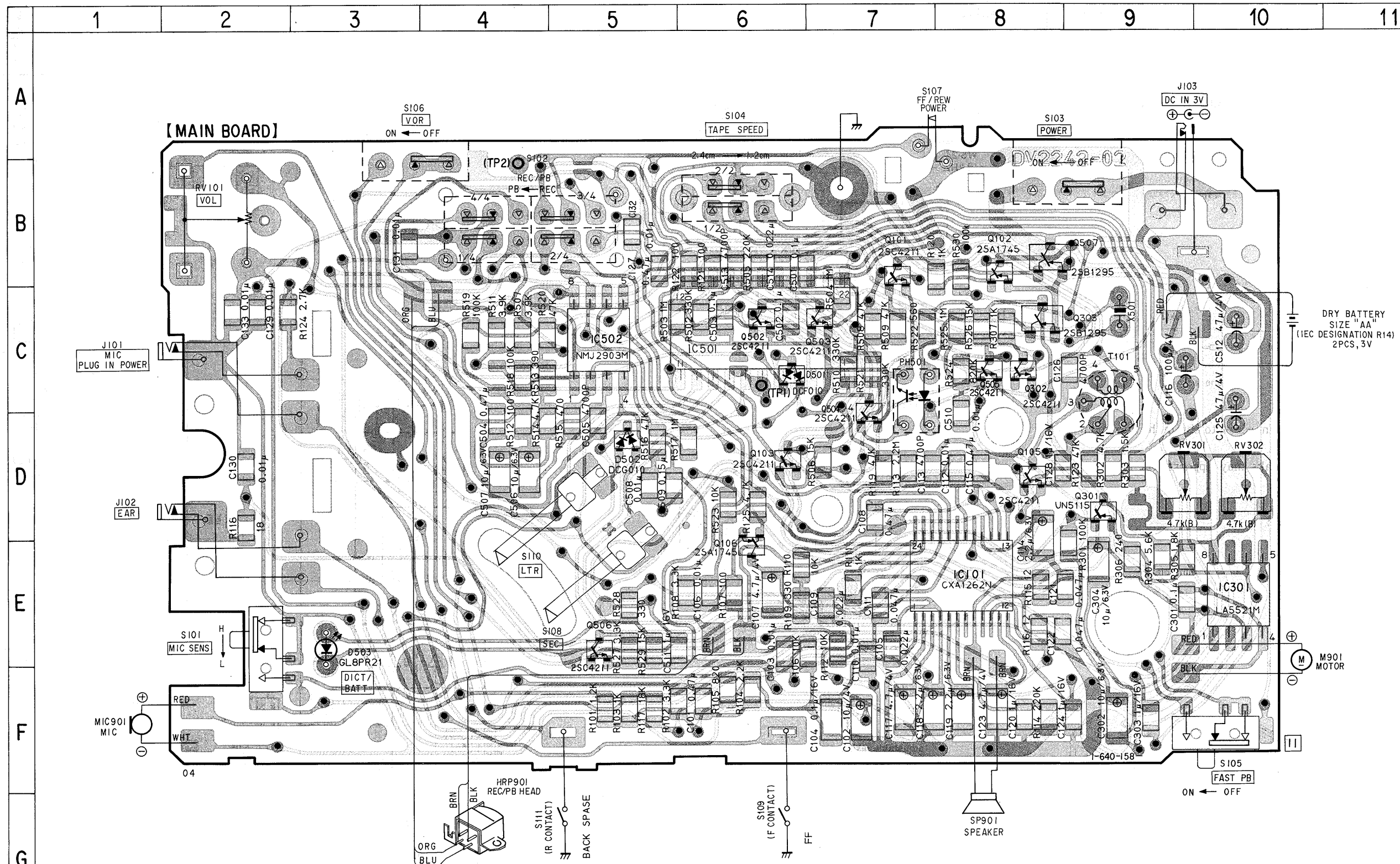
5-1. BLOCK DIAGRAM



5-2. PRINTED WIRING BOARD • Refer to page 13 for Semiconductor Lead Layouts.

• Semiconductor Location

Ref. No.	Location
D501	C-6
D502	D-5
D503	E-3
IC101	E-8
IC301	E-10
IC501	C-6
IC502	C-5
PH501	C-7
Q101	B-7
Q102	B-8
Q103	D-6
Q105	D-8
Q106	E-6
Q301	D-9
Q302	C-8
Q303	C-8
Q502	C-6
Q503	C-7
Q504	C-8
Q505	C-8
Q506	E-5
Q507	B-9



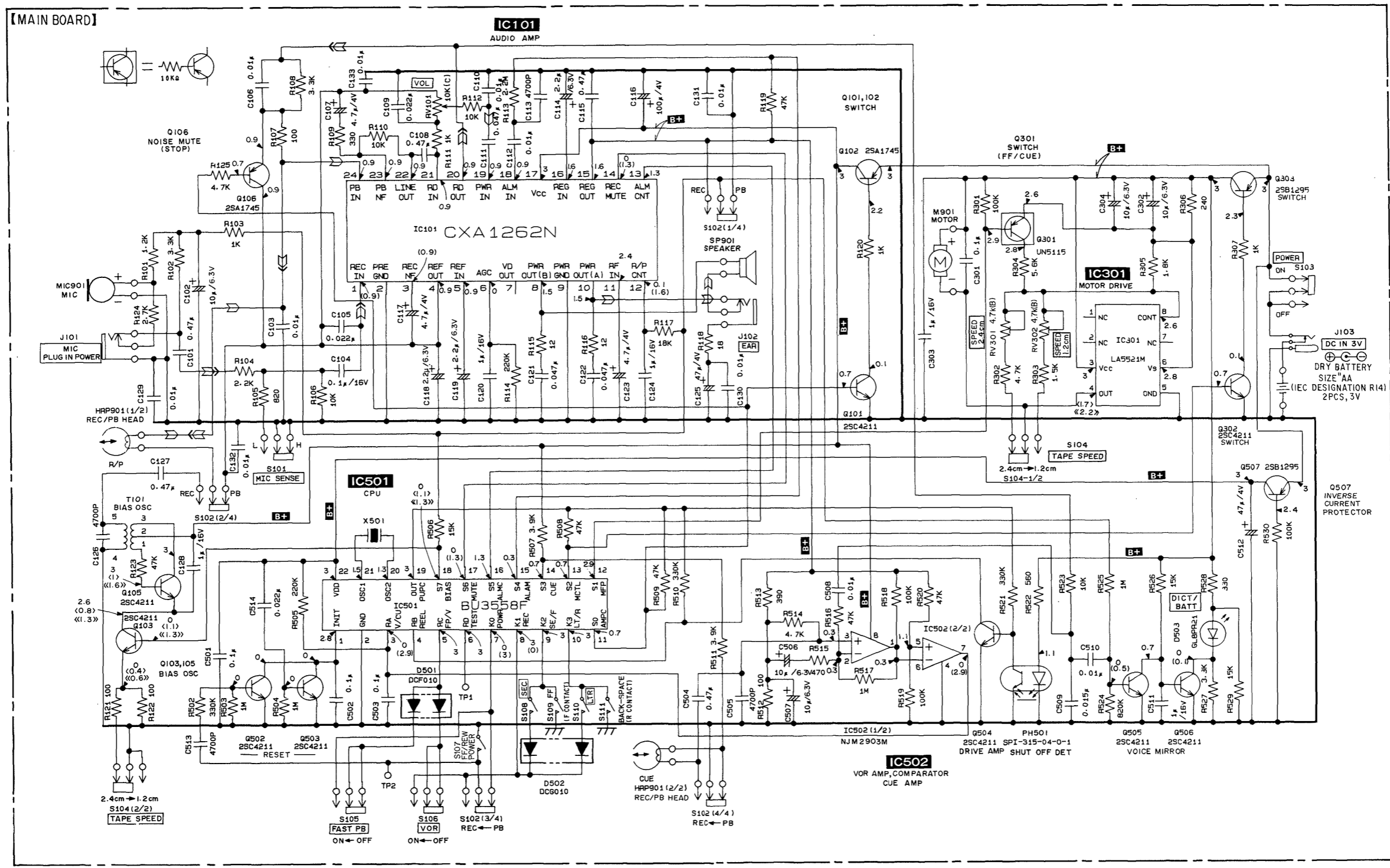
Note:

- : parts extracted from the component side.
- : parts extracted from the conductor side.
- : Through hole.
- ▨ : Pattern on the side which is seen.
- ⊙ : Pattern of the rear side.
- : Chip components extracted from the rear side.

5-3. SCHEMATIC DIAGRAM • Refer to page 13 for IC Block Diagrams.

1 2 3 4 5 6 7 8 9 10 11 12 13 14

A
B
C
D
E
F
G
H
I



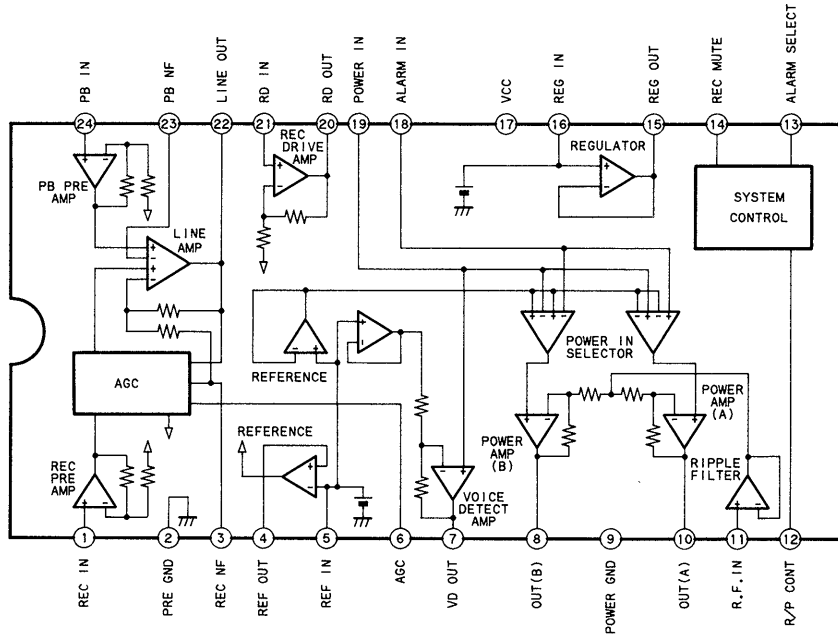
Note:

- All capacitors are in μF unless otherwise noted. pF: μpF 50WV or less are not indicated except for electrolytics and tantalums.
- All resistors are in Ω and $\frac{1}{4}\text{W}$ or less unless otherwise specified.

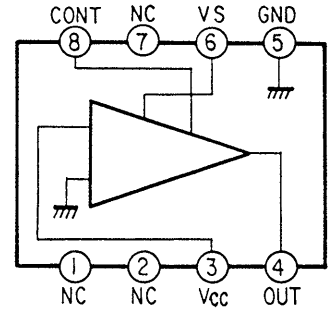
- **B+** : B+ Line
- : adjustment for repair.
- Power voltage is dc 3V and fed with regulated dc power supply from external power voltage jack.
- Voltage are dc with respect to ground under no-signal conditions.
- no mark : PB
- () : REC
- < > : 2.4cm
- << >> : 1.2cm

- Voltages are taken with a VOM (Input Impedance $10\text{M}\Omega$). Voltage variations may be noted due to normal production tolerances.
- Signal path.
- : PB
- : REC

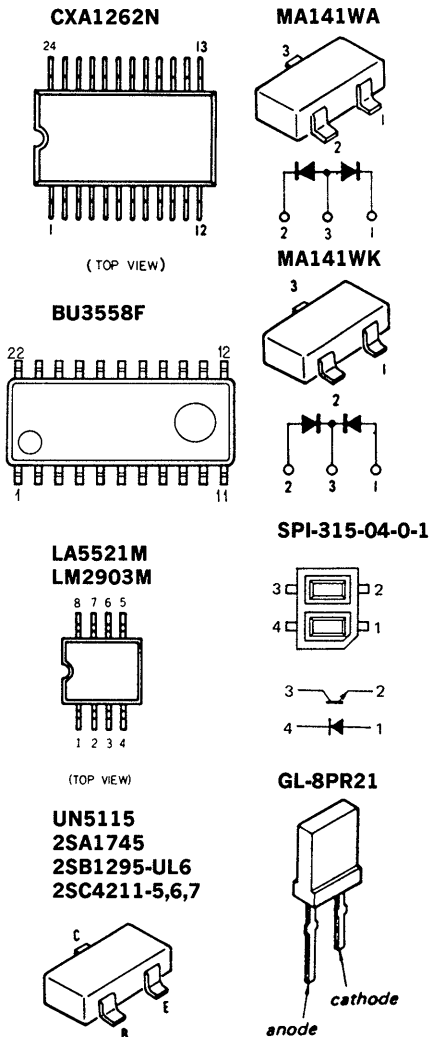
• IC Block Diagrams
IC101 CXA1262N



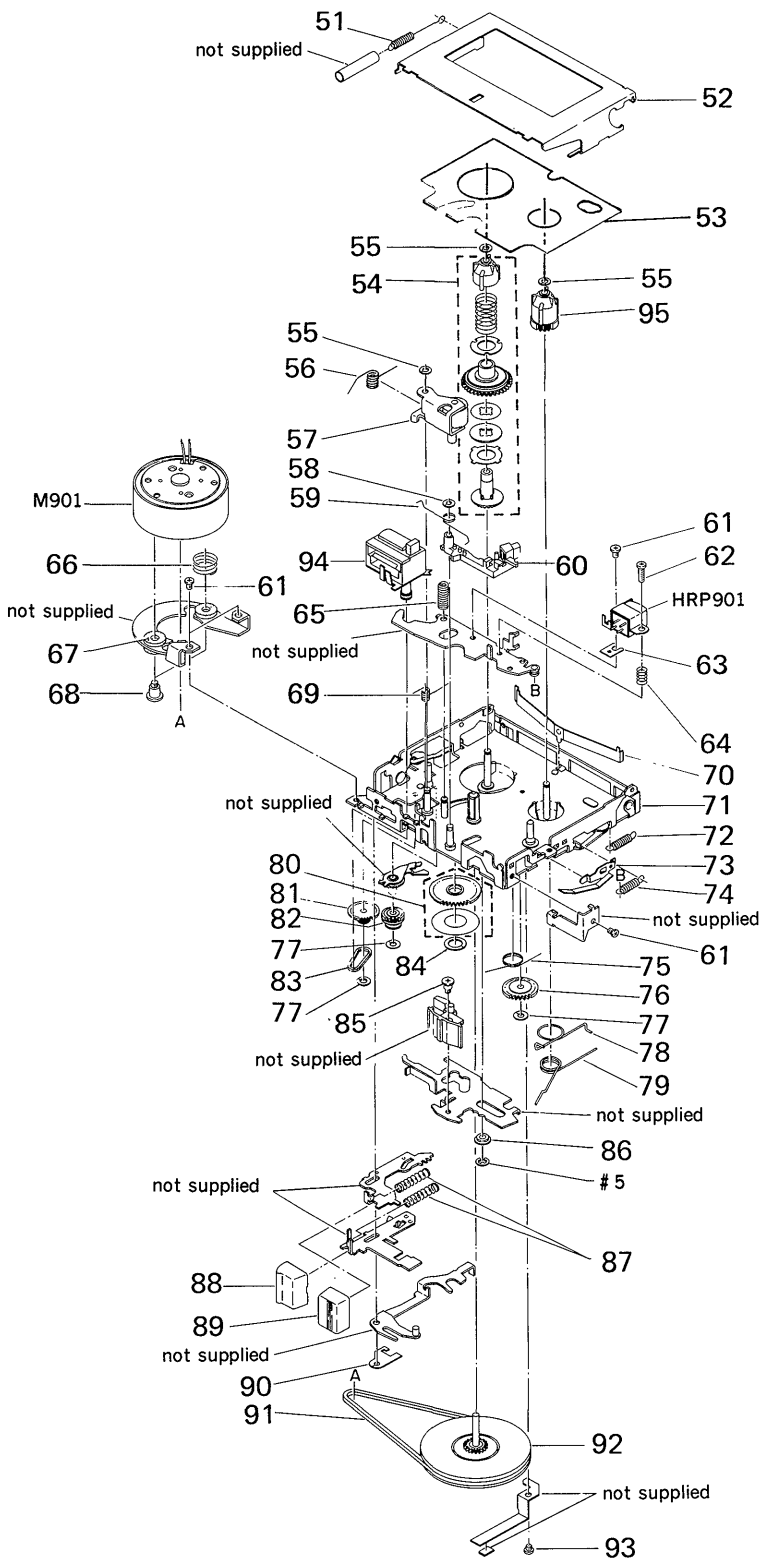
IC301 LA5521M



• Semiconductor Lead Layouts



2. MECHANISM DECK BLOCK
(MB-570)



Ref. No.	Part No.	Description	Remark
51	3-370-839-01	SPRING, POCK	
52	X-3363-458-01	SPOT ASSY, C POCK	
53	3-371-547-01	LABEL, C	
54	X-3363-459-01	REEL BLOCK ASSY, P	
55	3-315-384-11	WASHER, STOPPER	
56	3-370-844-01	SPRING, PR	
57	X-3363-463-01	RIVETING ASSY, PR LEVER	
58	3-578-265-11	WASHER, STOPPER	
59	3-370-827-01	SPRING, EH LEVER	
60	X-3363-457-01	HEAD ASSY, E	
61	3-371-550-01	SCREW (1.6X1.6), PRECISION	
62	3-370-849-01	SCREW, AZIMUTH	
63	3-370-847-01	SPACER, HEAD	
64	3-370-848-01	SPRING, AZIMUTH	
65	3-370-828-01	SPRING, P COIL	
66	3-370-846-01	SPRING, M	
67	3-371-543-01	RUBBER, M	
68	3-371-542-01	SCREW, STEP	
69	3-370-835-01	SPRING, P HOOK	
70	3-370-838-01	SPRING, K HOLDER	
71	* X-3363-454-01	RIVETING ASSY, PLATE, BOTTOM	
72	3-370-826-01	SPRING, G LEVER	
73	3-370-836-01	SPRING, P PUSH	
74	3-370-834-01	SPRING, P LEVER	
75	3-370-825-01	SPRING, BRAKE	
76	3-370-832-01	GEAR, RA	
77	3-559-408-11	WASHER, POLYETHYLENE, DIA. 1.2	
78	3-370-837-01	SPRING, ASSIST	
79	3-370-833-01	SPRING, RECORD/PLAYBACK	
80	X-3363-455-01	ADHESIVE ASSY, REFLECTOR	
81	3-370-841-01	IDLER, COUNTER	
82	3-370-830-01	GEAR, COUNTER	
83	3-370-840-01	BELT, COUNTER	
84	3-371-545-01	WASHER, STOPPER	
85	3-370-829-01	SCREW, STEP	
86	3-371-544-01	COLLAR, CONTROL	
87	3-370-831-01	SPRING, BUTTON	
88	3-370-843-01	BUTTON, EJ	
89	3-370-842-01	BUTTON, FF	
90	3-371-546-01	STOPPER, POWER LEVER	
91	3-370-845-01	BELT, M	
92	X-3363-456-01	PRESS FITTING ASSY, C WHEEL	
93	3-371-548-01	SCREW (1.4X1), PRECISION	
94	1-548-613-11	COUNTER, TAPE (SMALL)	
95	3-371-541-01	STOPPER (R)	
HRP901	1-543-847-11	HEAD, MAGNETIC (REC/PB)	
M901	X-3363-460-01	ADHESIVE ASSY, M PULLEY	

MAIN

SECTION 7
ELECTRICAL PARTS LIST

NOTE:

- Due to standardization, replacements in the parts list may be different from the parts specified in the diagrams or the components used on the set.
- Items marked "*" are not stocked since they are seldom required for routine service. Some delay should be anticipated when ordering these items.
- -XX, -X mean standardized parts, so they may have some differences from the original one.
- CAPACITORS
uF: μ F

- RESISTORS
All resistors are in ohms
METAL: Metal-film resistor
METAL OXIDE: Metal Oxide-film resistor
F: nonflammable
- COILS
uH: μ H
- SEMICONDUCTORS
In each case, u: μ , for example:
uA...: μ A..., uPA...: μ PA...,
uPB...: μ PB..., uPC...: μ PC...,
uPD...: μ PD....

When indicating parts by reference number, please include the board name.

Ref. No.	Part No.	Description	Remark	Ref. No.	Part No.	Description	Remark
	A-3041-574-A	MAIN BOARD, COMPLETE *****		C127	1-164-005-11	CERAMIC CHIP 0.47uF	25V
	3-370-819-01	KNOB, V		C128	1-164-346-11	CERAMIC CHIP 1uF	16V
	7-623-420-07	LW 2, TYPE B		C129	1-164-232-11	CERAMIC CHIP 0.01uF	50V
	7-627-851-17	SCREW, PRECISION +P 1.4X4.5		C130	1-164-232-11	CERAMIC CHIP 0.01uF	50V
		< CAPACITOR >		C131	1-164-232-11	CERAMIC CHIP 0.01uF	50V
C101	1-164-005-11	CERAMIC CHIP 0.47uF	25V	C132	1-164-232-11	CERAMIC CHIP 0.01uF	50V
C102	1-135-201-11	TANTALUM CHIP 10uF	20% 4V	C133	1-164-232-11	CERAMIC CHIP 0.01uF	50V
C103	1-164-232-11	CERAMIC CHIP 0.01uF	50V	C301	1-163-038-00	CERAMIC CHIP 0.1uF	25V
C104	1-163-077-00	CERAMIC CHIP 0.1uF	10% 25V	C302	1-135-201-11	TANTALUM CHIP 10uF	20% 4V
C105	1-163-037-11	CERAMIC CHIP 0.022uF	10% 25V	C303	1-164-346-11	CERAMIC CHIP 1uF	16V
C106	1-164-232-11	CERAMIC CHIP 0.01uF	50V	C304	1-135-201-11	TANTALUM CHIP 10uF	20% 4V
C107	1-135-151-21	TANTALUM CHIP 4.7uF	20% 4V	C501	1-163-038-00	CERAMIC CHIP 0.1uF	25V
C108	1-164-005-11	CERAMIC CHIP 0.47uF	25V	C502	1-163-038-00	CERAMIC CHIP 0.1uF	25V
C109	1-163-037-11	CERAMIC CHIP 0.022uF	10% 25V	C503	1-163-038-00	CERAMIC CHIP 0.1uF	25V
C110	1-164-232-11	CERAMIC CHIP 0.01uF	50V	C504	1-164-005-11	CERAMIC CHIP 0.47uF	25V
C111	1-163-035-00	CERAMIC CHIP 0.047uF	50V	C505	1-163-017-00	CERAMIC CHIP 0.0047uF	5% 50V
C112	1-164-232-11	CERAMIC CHIP 0.01uF	50V	C506	1-135-201-11	TANTALUM CHIP 10uF	20% 4V
C113	1-163-017-00	CERAMIC CHIP 0.0047uF	5% 50V	C507	1-135-201-11	TANTALUM CHIP 10uF	20% 4V
C114	1-135-149-21	TANTALUM CHIP 2.2uF	20% 10V	C508	1-164-232-11	CERAMIC CHIP 0.01uF	50V
C115	1-164-005-11	CERAMIC CHIP 0.47uF	25V	C509	1-163-023-00	CERAMIC CHIP 0.015uF	5% 50V
C116	1-124-433-00	ELECT 100uF	20% 4V	C510	1-164-232-11	CERAMIC CHIP 0.01uF	50V
C117	1-135-151-21	TANTALUM CHIP 4.7uF	20% 4V	C511	1-164-346-11	CERAMIC CHIP 1uF	16V
C118	1-135-149-21	TANTALUM CHIP 2.2uF	20% 10V	C512	1-126-154-11	ELECT 47uF	20% 6.3V
C119	1-135-149-21	TANTALUM CHIP 2.2uF	20% 10V	C513	1-163-017-00	CERAMIC CHIP 0.0047uF	5% 50V
C120	1-164-346-11	CERAMIC CHIP 1uF	16V	C514	1-163-037-11	CERAMIC CHIP 0.022uF	10% 25V
C121	1-163-035-00	CERAMIC CHIP 0.047uF	50V			< DIODE >	
C122	1-163-035-00	CERAMIC CHIP 0.047uF	50V	D501	8-719-404-32	DIODE MA141WA	
C123	1-135-151-21	TANTALUM CHIP 4.7uF	20% 4V	D502	8-719-404-35	DIODE MA141WK	
C124	1-164-346-11	CERAMIC CHIP 1uF	16V	D503	8-719-939-33	DIODE GL8PR21 (DICT/BATT)	
C125	1-126-154-11	ELECT 47uF	20% 6.3V			< IC >	
C126	1-163-017-00	CERAMIC CHIP 0.0047uF	5% 50V	IC101	8-752-036-25	IC CXA1262N	

Ref. No.	Part No.	Description	Remark	Ref. No.	Part No.	Description	Remark
IC301	8-759-804-43	IC LA5521M		R121	1-216-025-00	METAL CHIP 100 5%	1/10W
IC501	8-759-521-12	IC BU3558F		R122	1-216-025-00	METAL CHIP 100 5%	1/10W
IC502	8-759-981-65	IC LM2903M		R123	1-216-089-00	METAL CHIP 47K 5%	1/10W
		< JACK >		R124	1-216-059-00	METAL CHIP 2.7K 5%	1/10W
J101	1-563-319-21	JACK (MIC PLUG IN POWER)		R125	1-216-065-00	METAL CHIP 4.7K 5%	1/10W
J102	1-563-319-21	JACK (EAR)		R301	1-216-097-00	METAL CHIP 100K 5%	1/10W
J103	1-568-228-11	JACK, EXTERNAL POWER (DC IN 3V)		R302	1-216-065-00	METAL CHIP 4.7K 5%	1/10W
		< PHOTO REFLECTOR >		R303	1-216-053-00	METAL CHIP 1.5K 5%	1/10W
PH501	8-719-992-05	PHOTO REFLECTOR SPI-315-04-0-1		R304	1-216-067-00	METAL CHIP 5.6K 5%	1/10W
		< TRANSISTOR >		R305	1-216-055-00	METAL CHIP 1.8K 5%	1/10W
Q101	8-729-822-97	TRANSISTOR 2SC4211-5.6.7		R306	1-216-034-00	METAL CHIP 240 5%	1/10W
Q102	8-729-823-86	TRANSISTOR 2SA1745		R307	1-216-049-00	METAL CHIP 1K 5%	1/10W
Q103	8-729-822-97	TRANSISTOR 2SC4211-5.6.7		R502	1-216-109-00	METAL CHIP 330K 5%	1/10W
Q105	8-729-822-97	TRANSISTOR 2SC4211-5.6.7		R503	1-216-121-00	METAL CHIP 1M 5%	1/10W
Q106	8-729-823-86	TRANSISTOR 2SA1745		R504	1-216-121-00	METAL CHIP 1M 5%	1/10W
Q301	8-729-420-53	TRANSISTOR UN5115		R505	1-216-105-00	METAL CHIP 220K 5%	1/10W
Q302	8-729-822-97	TRANSISTOR 2SC4211-5.6.7		R506	1-216-077-00	METAL CHIP 15K 5%	1/10W
Q303	8-729-807-87	TRANSISTOR 2SB1295-UL6		R507	1-216-063-00	METAL CHIP 3.9K 5%	1/10W
Q502	8-729-822-97	TRANSISTOR 2SC4211-5.6.7		R508	1-216-089-00	METAL CHIP 47K 5%	1/10W
Q503	8-729-822-97	TRANSISTOR 2SC4211-5.6.7		R509	1-216-089-00	METAL CHIP 47K 5%	1/10W
Q504	8-729-822-97	TRANSISTOR 2SC4211-5.6.7		R510	1-216-109-00	METAL CHIP 330K 5%	1/10W
Q505	8-729-822-97	TRANSISTOR 2SC4211-5.6.7		R511	1-216-063-00	METAL CHIP 3.9K 5%	1/10W
Q506	8-729-822-97	TRANSISTOR 2SC4211-5.6.7		R512	1-216-025-00	METAL CHIP 100 5%	1/10W
Q507	8-729-807-87	TRANSISTOR 2SB1295-UL6		R513	1-216-039-00	METAL CHIP 390 5%	1/10W
		< RESISTOR >		R514	1-216-065-00	METAL CHIP 4.7K 5%	1/10W
R101	1-216-051-00	METAL CHIP 1.2K 5%	1/10W	R515	1-216-041-00	METAL CHIP 470 5%	1/10W
R102	1-216-061-00	METAL CHIP 3.3K 5%	1/10W	R516	1-216-089-00	METAL CHIP 47K 5%	1/10W
R103	1-216-049-00	METAL CHIP 1K 5%	1/10W	R517	1-216-121-00	METAL CHIP 1M 5%	1/10W
R104	1-216-057-00	METAL CHIP 2.2K 5%	1/10W	R518	1-216-097-00	METAL CHIP 100K 5%	1/10W
R105	1-216-047-00	METAL CHIP 820 5%	1/10W	R519	1-216-097-00	METAL CHIP 100K 5%	1/10W
R106	1-216-073-00	METAL CHIP 10K 5%	1/10W	R520	1-216-089-00	METAL CHIP 47K 5%	1/10W
R107	1-216-025-00	METAL CHIP 100 5%	1/10W	R521	1-216-109-00	METAL CHIP 330K 5%	1/10W
R108	1-216-061-00	METAL CHIP 3.3K 5%	1/10W	R522	1-216-043-00	METAL CHIP 560 5%	1/10W
R109	1-216-037-00	METAL CHIP 330 5%	1/10W	R523	1-216-073-00	METAL CHIP 10K 5%	1/10W
R110	1-216-073-00	METAL CHIP 10K 5%	1/10W	R524	1-216-119-00	METAL CHIP 820K 5%	1/10W
R111	1-216-049-00	METAL CHIP 1K 5%	1/10W	R525	1-216-121-00	METAL CHIP 1M 5%	1/10W
R112	1-216-073-00	METAL CHIP 10K 5%	1/10W	R526	1-216-077-00	METAL CHIP 15K 5%	1/10W
R113	1-216-129-00	METAL CHIP 2.2M 5%	1/10W	R527	1-216-061-00	METAL CHIP 3.3K 5%	1/10W
R114	1-216-105-00	METAL CHIP 220K 5%	1/10W	R528	1-216-037-00	METAL CHIP 330 5%	1/10W
R115	1-216-003-11	METAL GLAZE 12 5%	1/10W	R529	1-216-077-00	METAL CHIP 15K 5%	1/10W
R116	1-216-003-11	METAL GLAZE 12 5%	1/10W	R530	1-216-097-00	METAL CHIP 100K 5%	1/10W
R117	1-216-079-00	METAL CHIP 18K 5%	1/10W			< VARIABLE RESISTOR >	
R118	1-216-007-00	METAL CHIP 18 5%	1/10W	RV101	1-230-939-11	RES, VAR, CARBON 10K (VOL)	
R119	1-216-089-00	METAL CHIP 47K 5%	1/10W	RV301	1-238-675-21	RES, ADJ, METAL GLAZE 4.7K	
R120	1-216-049-00	METAL CHIP 1K 5%	1/10W	RV302	1-238-675-21	RES, ADJ, METAL GLAZE 4.7K	

MAIN

Ref. No.	Part No.	Description	Remark
		< SWITCH >	
S101	1-571-275-11	SWITCH, SLIDE (MIC SENS)	
S102	1-572-863-11	SWITCH, SLIDE (REC/PB)	
S103	1-572-861-11	SWITCH, SLIDE (POWER)	
S104	1-572-862-11	SWITCH, SLIDE (TAPE SPEED)	
S105	1-571-275-11	SWITCH, SLIDE (FAST PB)	
S106	1-572-861-11	SWITCH, SLIDE (VOR)	
S107	1-572-864-11	SWITCH, LEAF (FF/REW POWER)	
S108	1-570-395-11	SWITCH, LEAF (LTC)	
S109	* 3-370-818-01	CONTACT, F (FF)	
S110	1-570-395-11	SWITCH, LEAF (SEC)	
S111	* 3-370-817-01	CONTACT, R (REW)	
		< TRANSFORMER >	
T101	1-433-386-11	TRANSFORMER, BIAS OSCILLATOR	
		< CERAMIC OSCILLATOR >	
X501	1-577-306-11	OSCILLATOR, CERAMIC (1.0MHz)	

		MISCELLANEOUS	

94	1-548-613-11	COUNTER, TAPE (SMALL)	
HRP901	1-543-847-11	HEAD, MAGNETIC (REC/PB)	
M901	X-3363-460-1	ADHESIVE ASSY, M PULLEY	
MIC901	1-542-142-11	MICROPHONE, BUILT-IN	
S109	* 3-370-819-01	CONTACT, F (FF)	
S111	* 3-370-817-01	CONTACT, R (REW)	
SP901	1-544-545-11	SPEAKER (0.28CM)	

		ACCESSORIES & PACKING MATERIALS	

	* 3-369-141-01	INDIVIDUAL CARTON	
	* 3-369-142-01	CUSHION	
	3-370-808-01	CASE, CARRYING	
	3-753-431-11	MANUAL, INSTRUCTION	
		(ENGLISH, GERMAN, FRENCH) (EXCEPT US)	
	3-753-431-21	MANUAL, INSTRUCTION (ENGLISH) (US)	

Ref. No.	Part No.	Description	Remark
----------	----------	-------------	--------

HARDWARE LIST

#1	7-627-850-57	SCREW, PRECISION +P 1.4X3.5	
#2	7-623-420-07	LW 2, TYPE B	
#3	7-627-850-18	SCREW, PRECISION +P 1.4X2.5	
#4	7-627-850-79	SCREW, PRECISION +P1.4X1.8TYPE3	
#5	7-624-101-01	STOP RING 1.2 (E TYPE)	
#6	7-627-851-17	SCREW, PRECISION +P 1.4X4.5	

BM-570

SONY SERVICE MANUAL

US Model
Canadian Model
AEP Model
UK Model
E Model

SUPPLEMENT-1

File this supplement with the service manual.

Subject : The following parts are available for service.

<u>Part No.</u>	<u>Description</u>
3-371-590-01	SLEEVE, B



Note: If you operate the unit with the AC power adaptor or you will not use the unit for a long time, remove the batteries to prevent damage from battery leakage and corrosion.

