

CDP-C10

SERVICE MANUAL

PRELIMINARY



US Model
Canadian Model
AEP Model
UK Model
E Model

SPECIFICATIONS

COMPACT DISC PLAYER CDP-C10

System	Compact disc digital audio system
Frequency response	2 Hz - 20,000 Hz (± 0.5 dB)
Signal to noise ratio	More than 98 dB
Dynamic range	More than 95 dB
Harmonic distortion	Less than 0.003% (at 1 kHz)
Channel separation	More than 90 dB
Wow and flutter	Below measurable limit
Outputs	Fixed line outputs (phono jacks) Output level 2 Vrms (at MSB) Load impedance over 10 kilohms Variable line outputs (phono jacks) Output level 0 Vrms - 2 V rms (at MSB) Load impedance over 50 kilohms Headphones (phone jack) 28 mW at 32 ohms

General

Power requirements	Model for European countries: 220 V AC, 50 Hz Model for United Kingdom: 240 V AC, 50 Hz Model for other countries: 120, 220 or 240 V AC adjustable, 50/60 Hz
--------------------	--

Power consumption

17 W

Dimensions	Approx. 430 × 115 × 340 mm (w/h/d) (17 × 4 $\frac{5}{8}$ × 13 $\frac{1}{2}$ inches) incl. projecting parts and controls
------------	---

Weight	Approx. 7.5 kg (16 lbs 9 oz), net
--------	-----------------------------------

REMOTE COMMANDER RM-D110

Remote control system	Infrared control
Power requirements	3 V dc with two batteries size AA (IEC designation R6)
Dimensions	Approx. 67 × 20 × 175 mm (w/h/d) (2 $\frac{3}{4}$ × 1 $\frac{3}{16}$ × 7 inches) incl. projecting parts and controls
Weight	Approx. 145 g (5.1 oz) incl. batteries

Note

This appliance conforms with EEC Directives 76/889 and 82/499 regarding interference suppression.

SUPPLIED ACCESSORIES

Audio signal connecting cord	(phono plug × 2 ↔ phono plug × 2) (1)
Remote commander	(1)
Disc magazine	(1)
CD booklet holder	(1)
Sony New Super batteries SUM-3 (NS)	(2)

Design and specifications subject to change without notice.

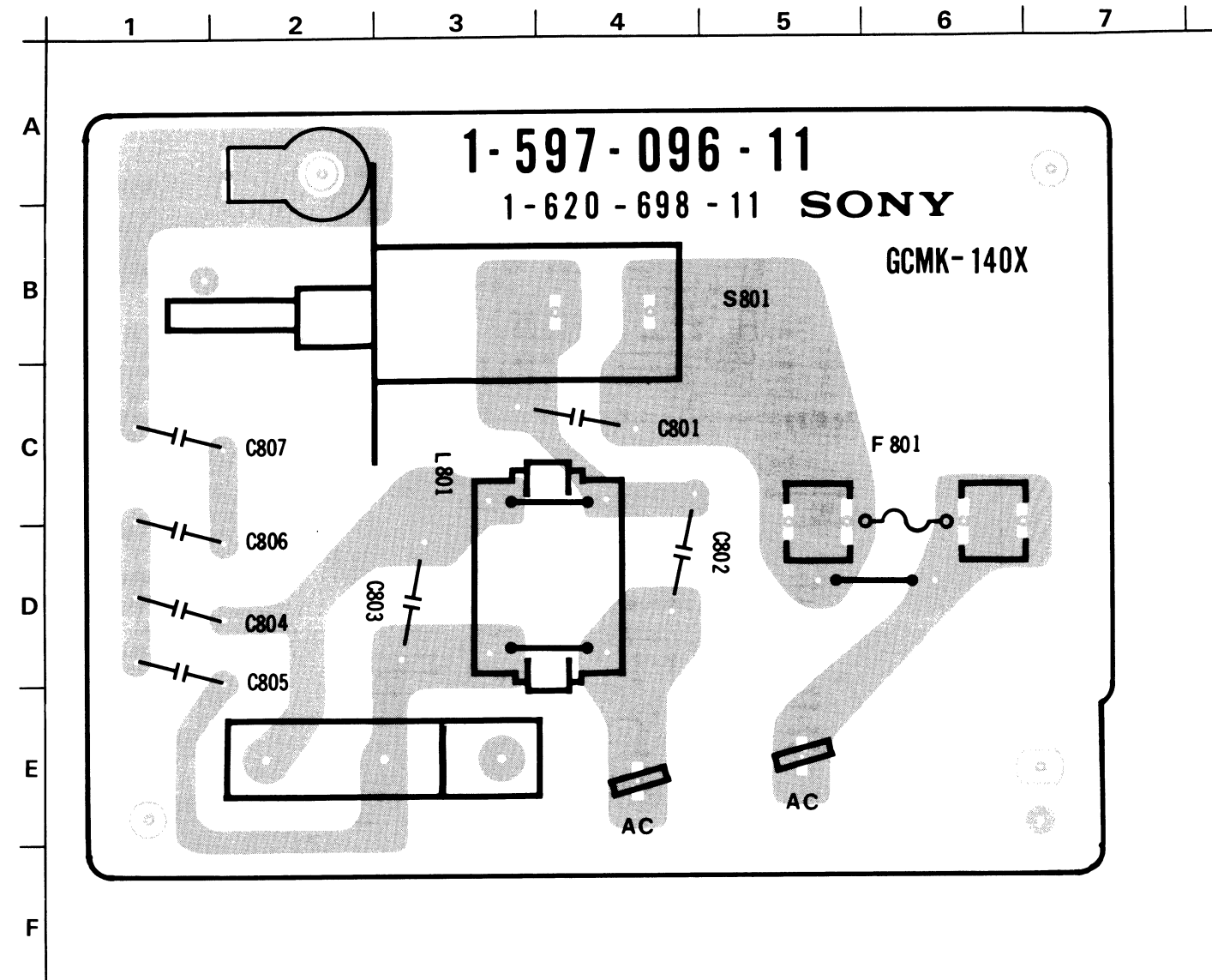
COMPACT DISC PLAYER
SONY

AUD

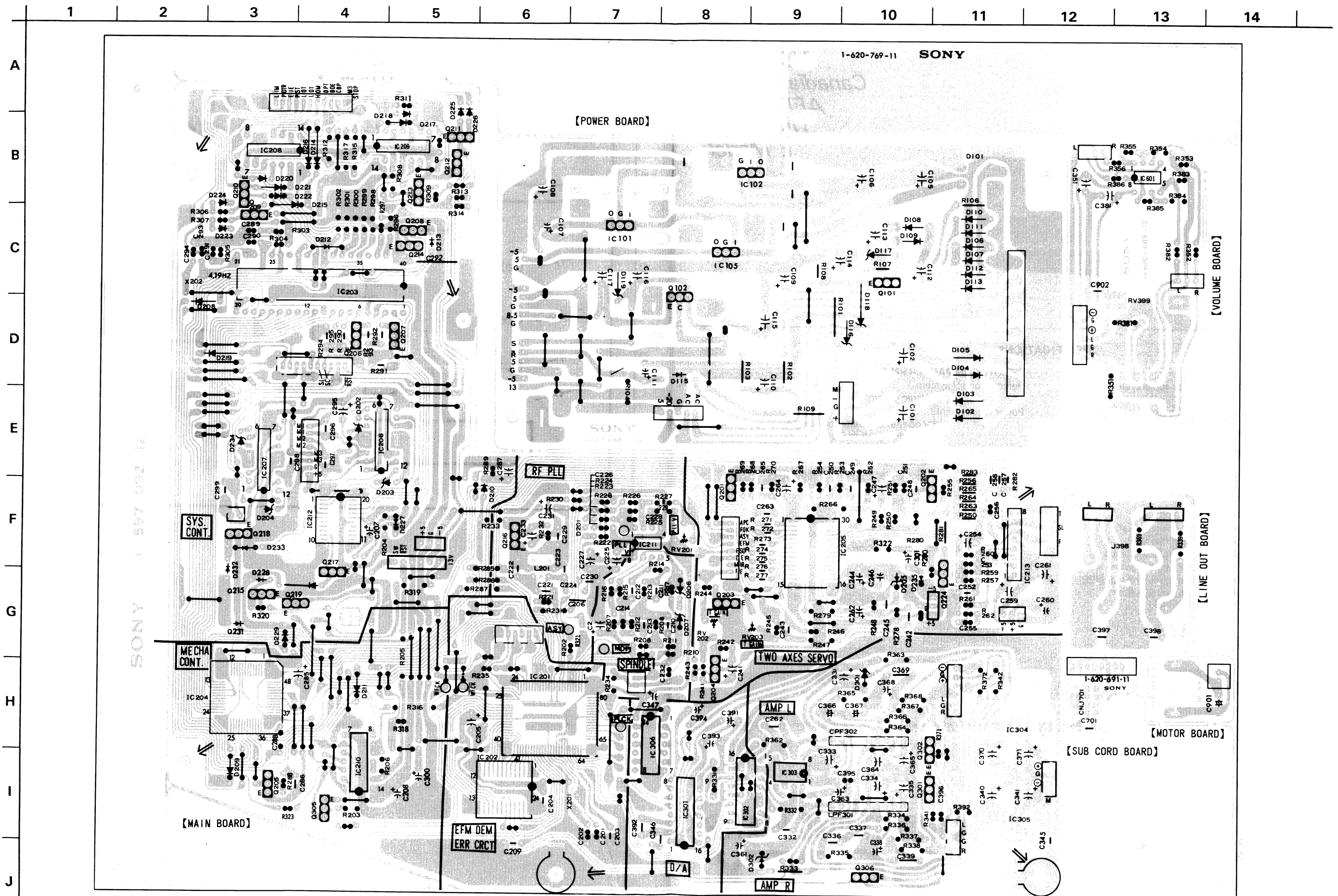
CDP-C10

1-1. MOUNTING DIAGRAMS — POWER —

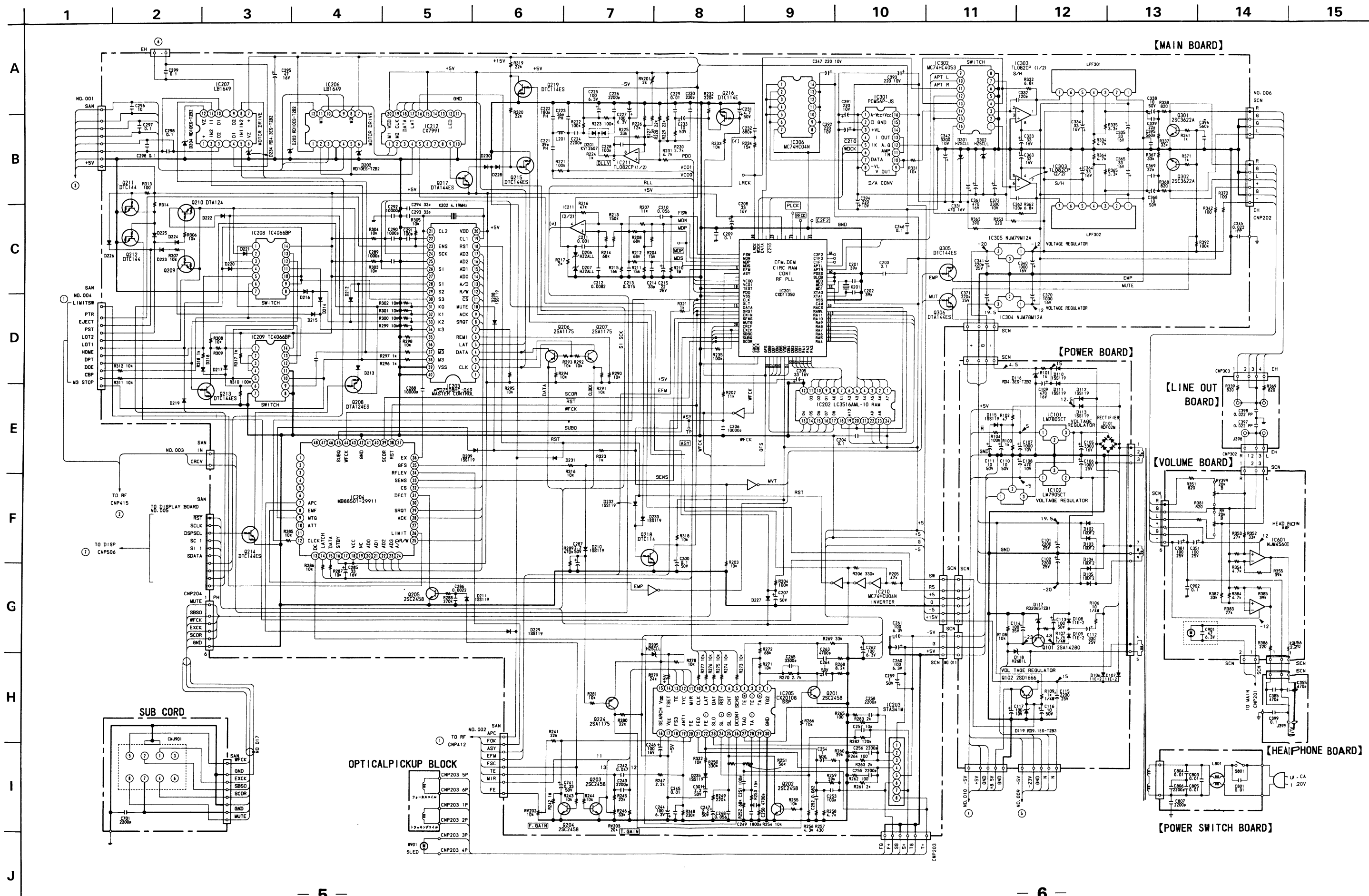
SECTION 1 DIAGRAMS



1-2. MOUNTING DIAGRAM
- MAIN -



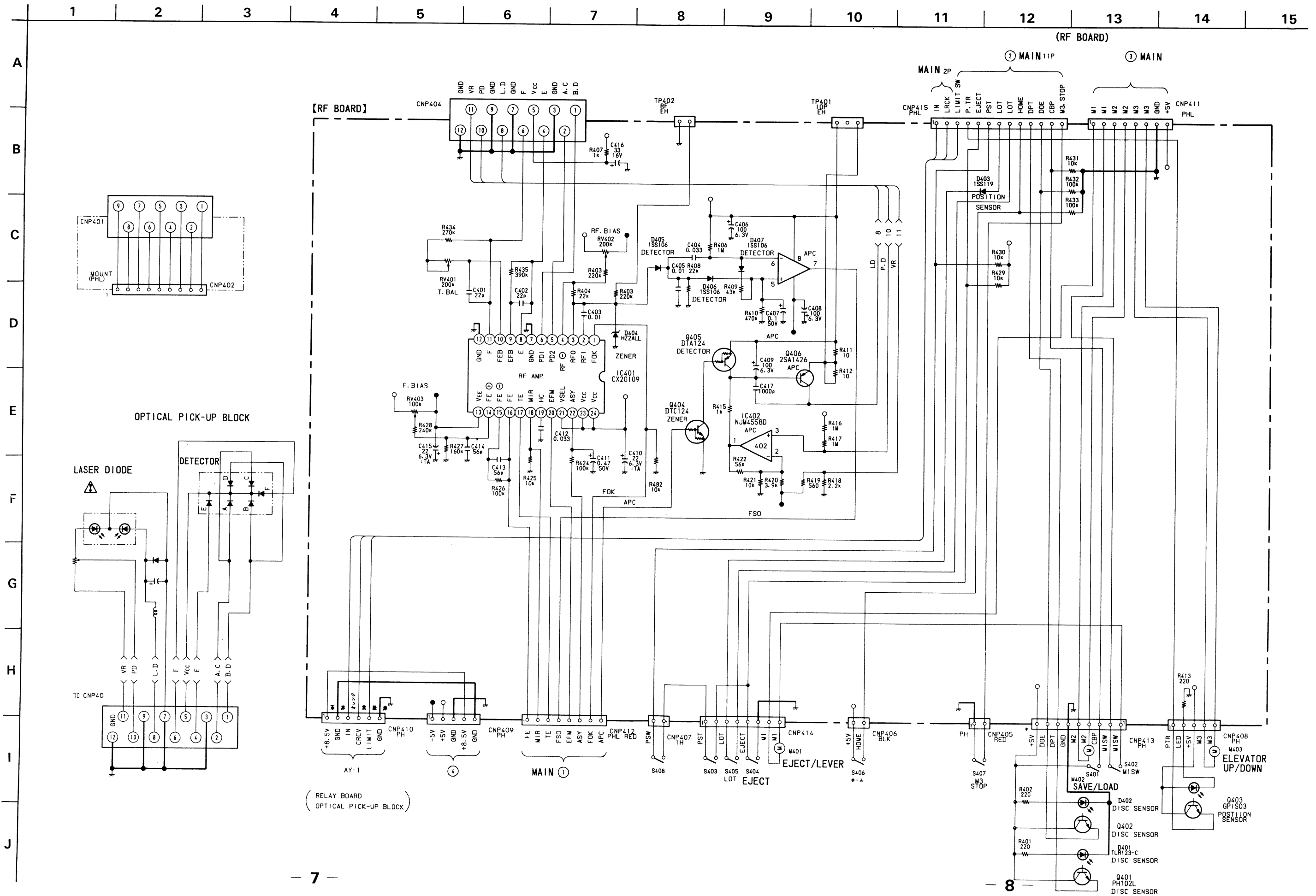
1-3. SCHEMATIC DIAGRAMS
- MAIN -



CDP-C10 CDP-C10

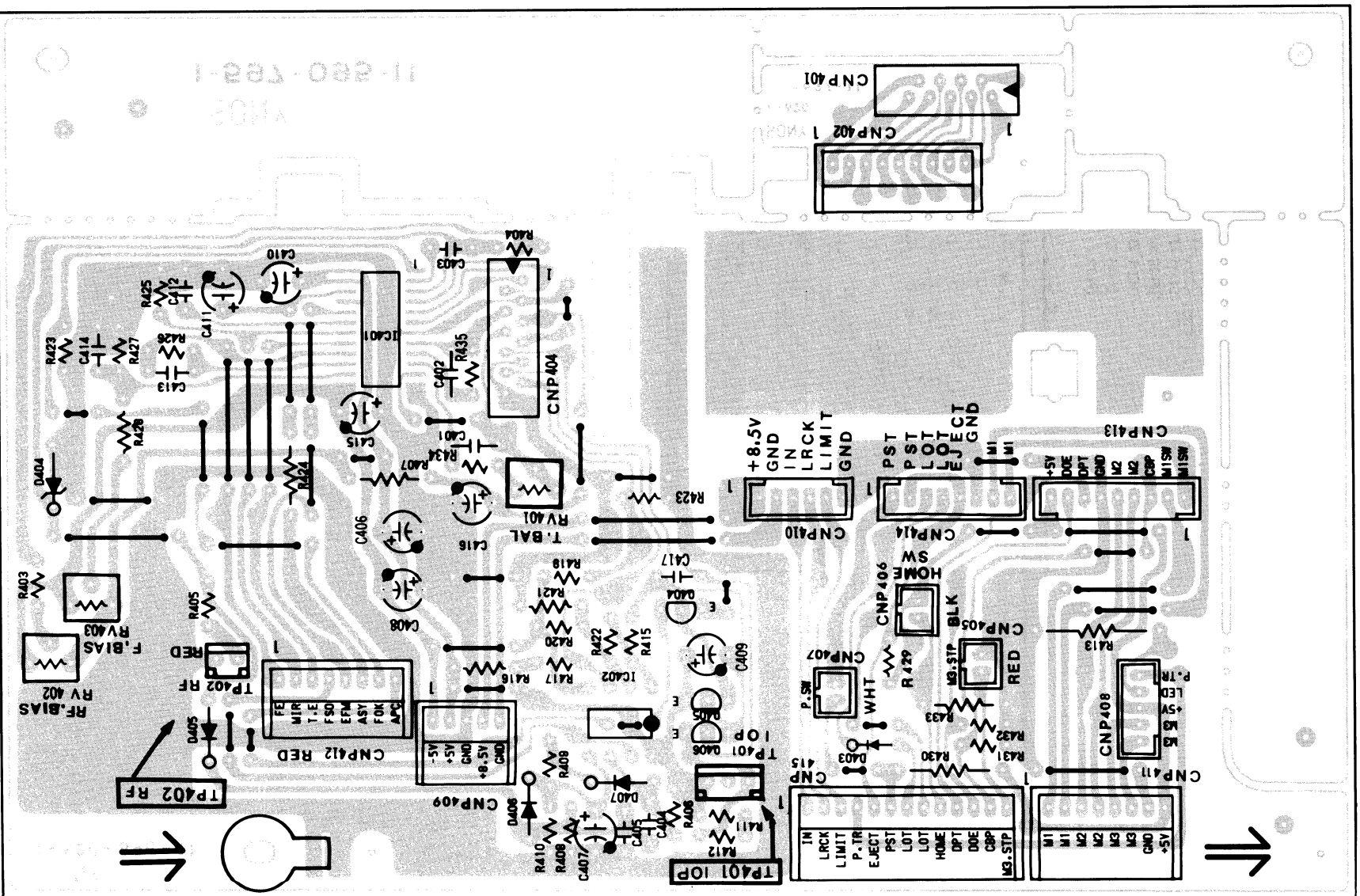
1-4. SCHEMATIC DIAGRAM

- RF -



1-5. MOUNTING DIAGRAM

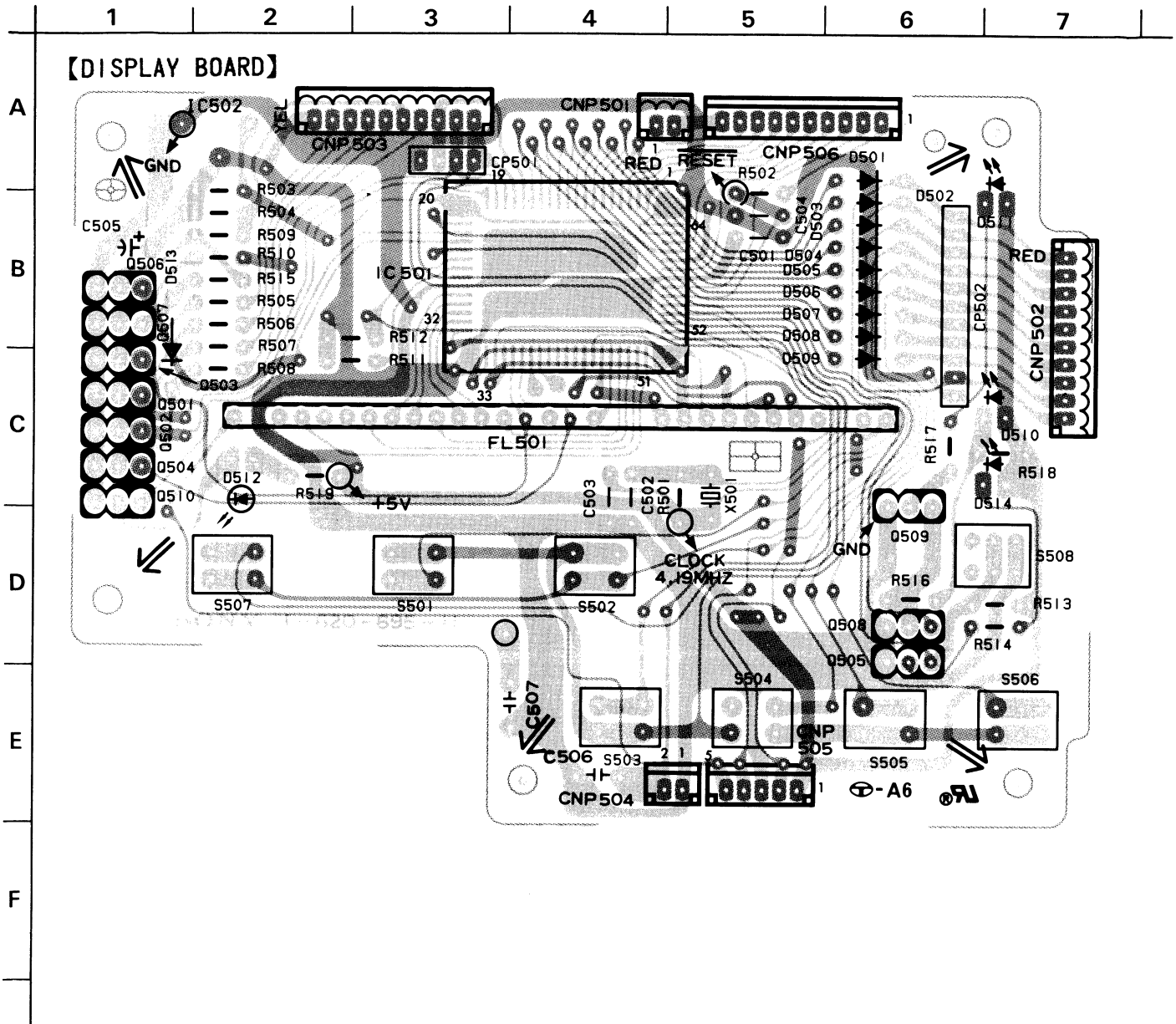
- RF -



CDP-C10

1-6. MOUNTING DIAGRAM

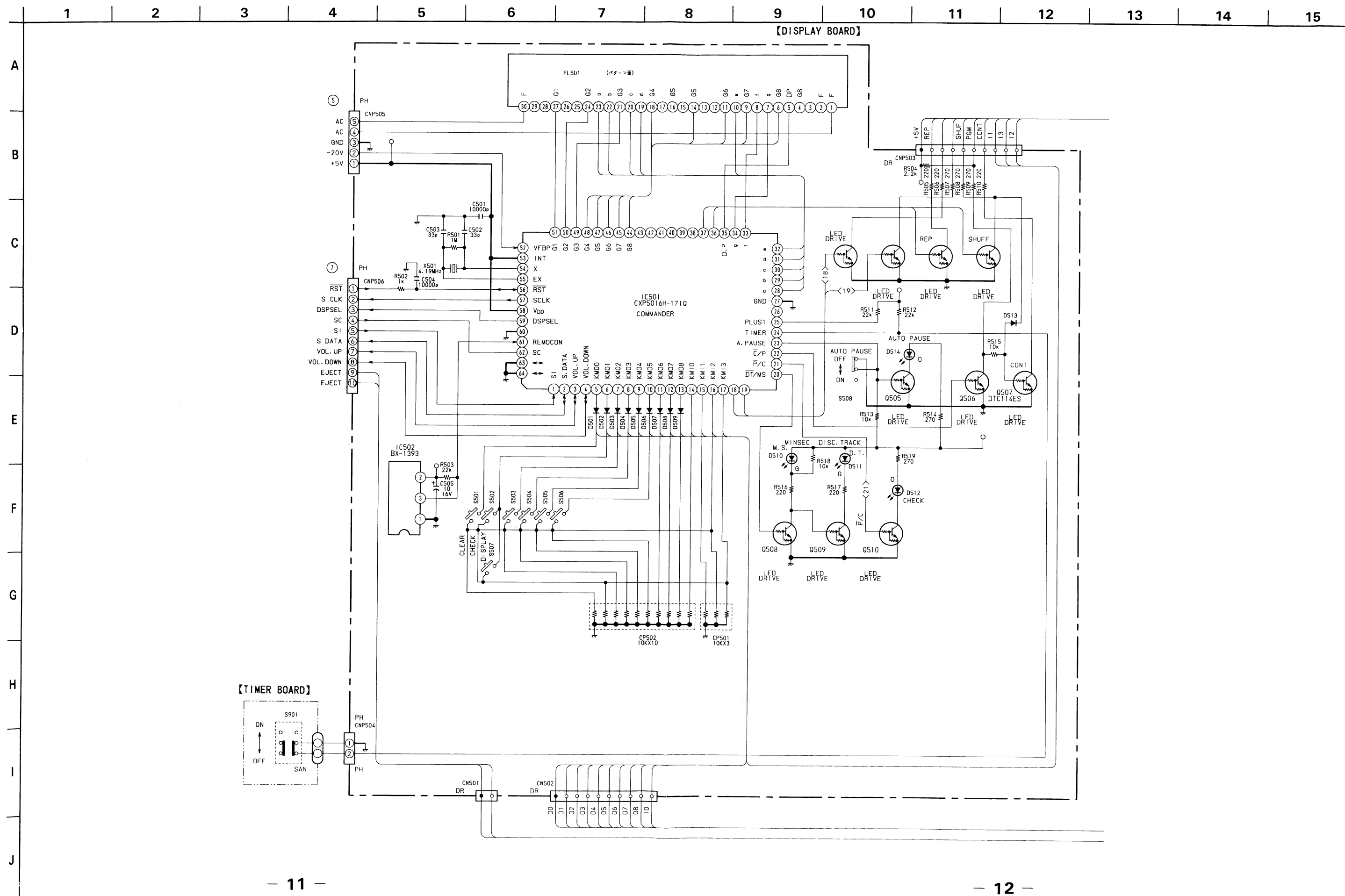
— DISPLAY —



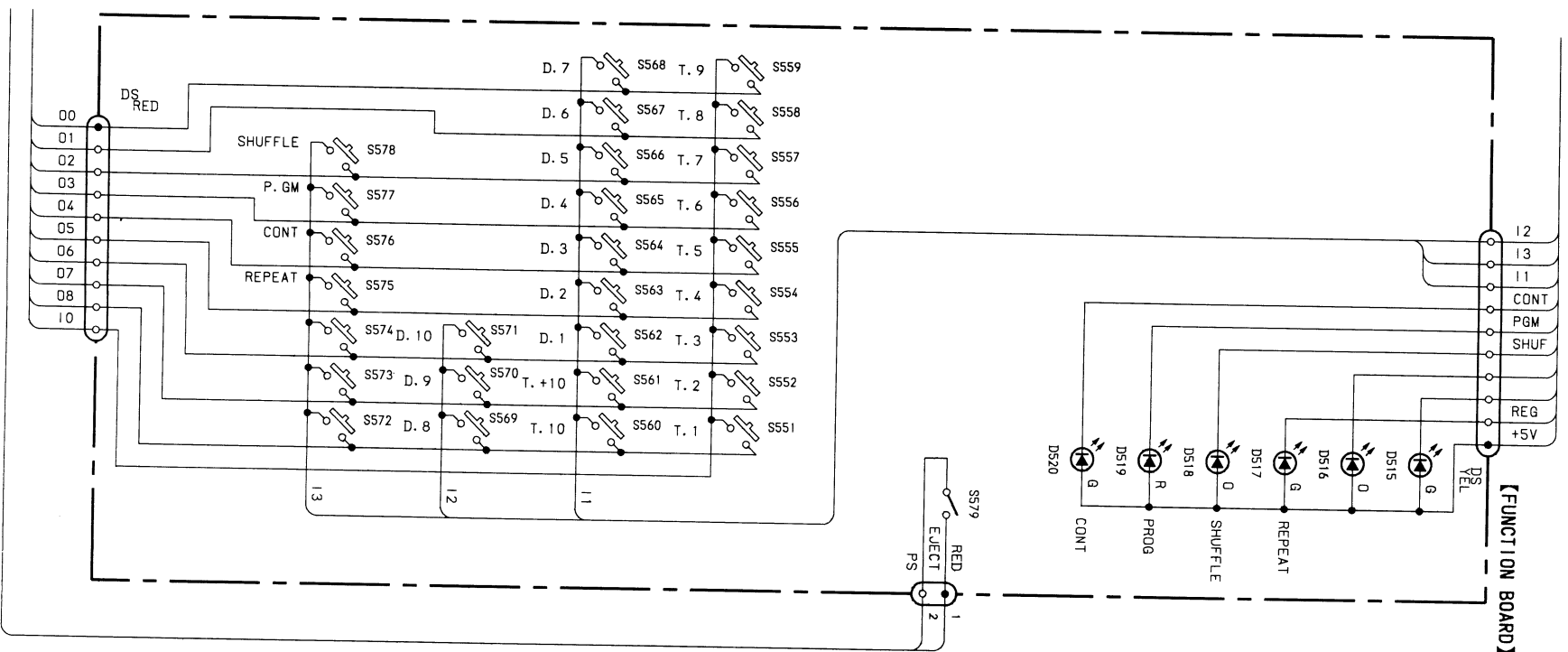
CDP-C10 CDP-C10

1-7. SCHEMATIC DIAGRAM

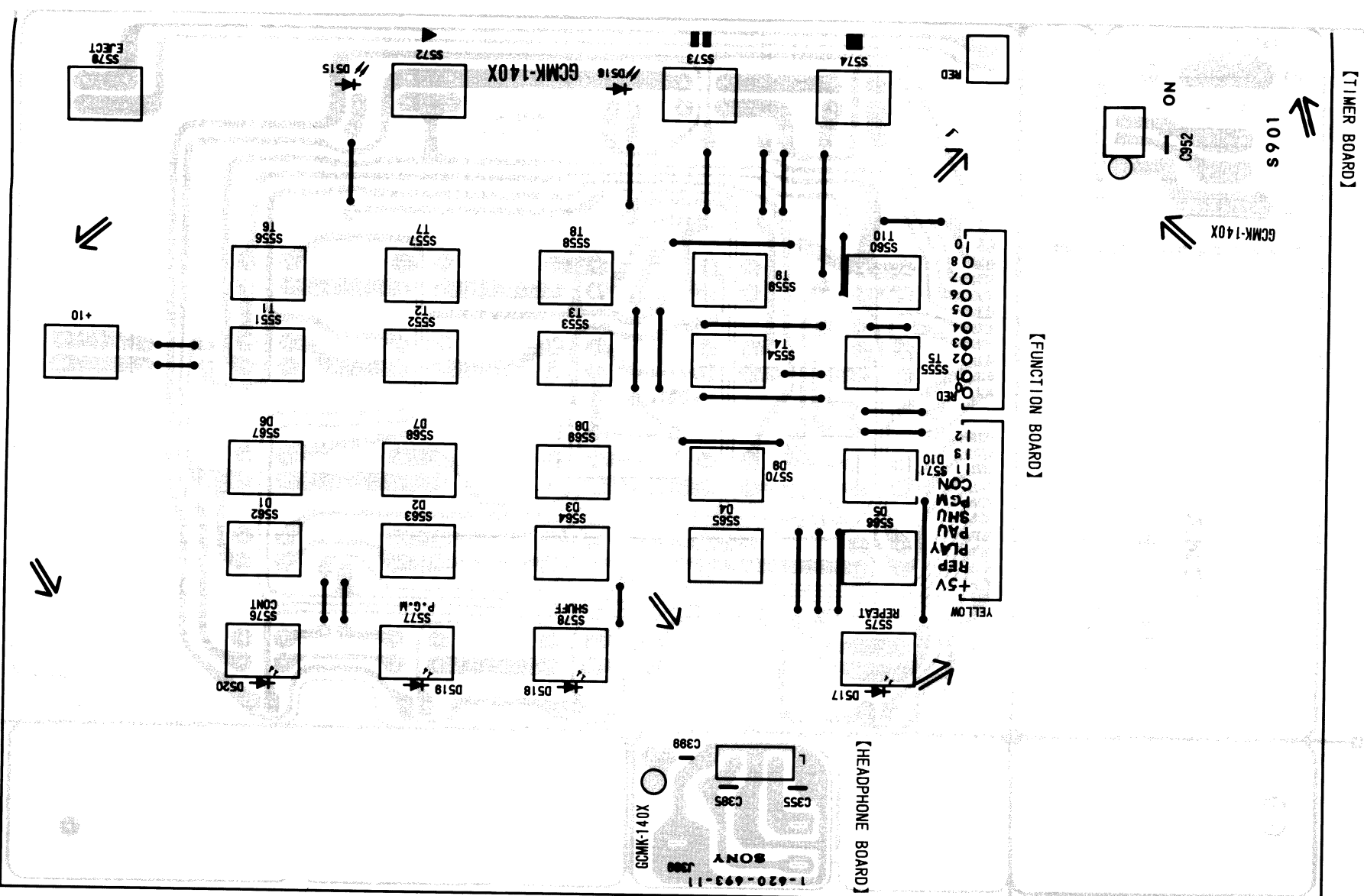
– – DISPLAY –



1-9. SCHEMATIC DIAGRAM
- FUNCTION -



1-10. MOUNTING DIAGRAM
- FUNCTION -



SECTION 2

EXPLODED VIEWS AND PARTS LIST

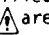
NOTE:

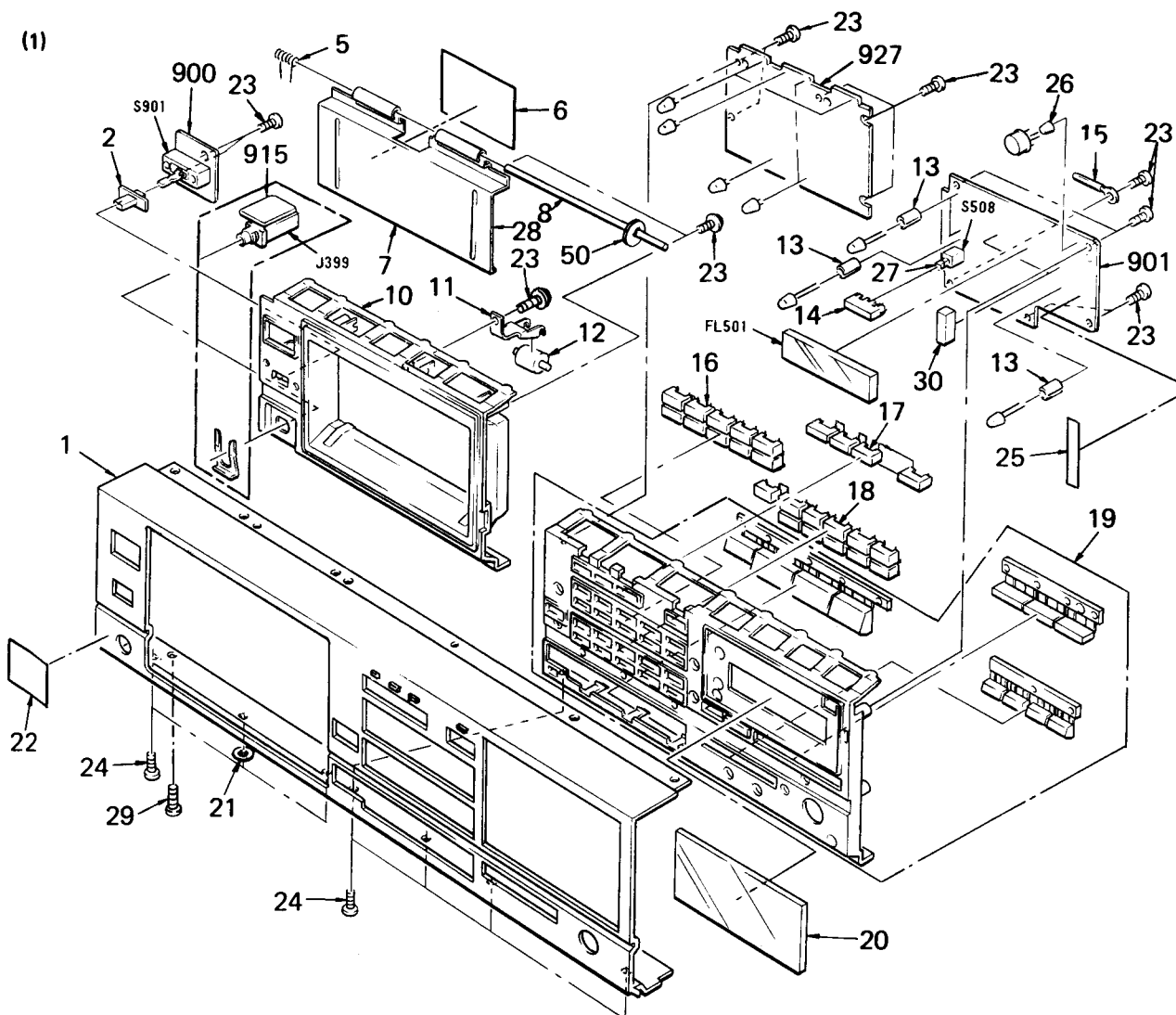
The mechanical parts with no reference number in the exploded views are not supplied.

Items marked " * " are not stocked since they are seldom required for routine service. Some delay should be anticipated when ordering these items.

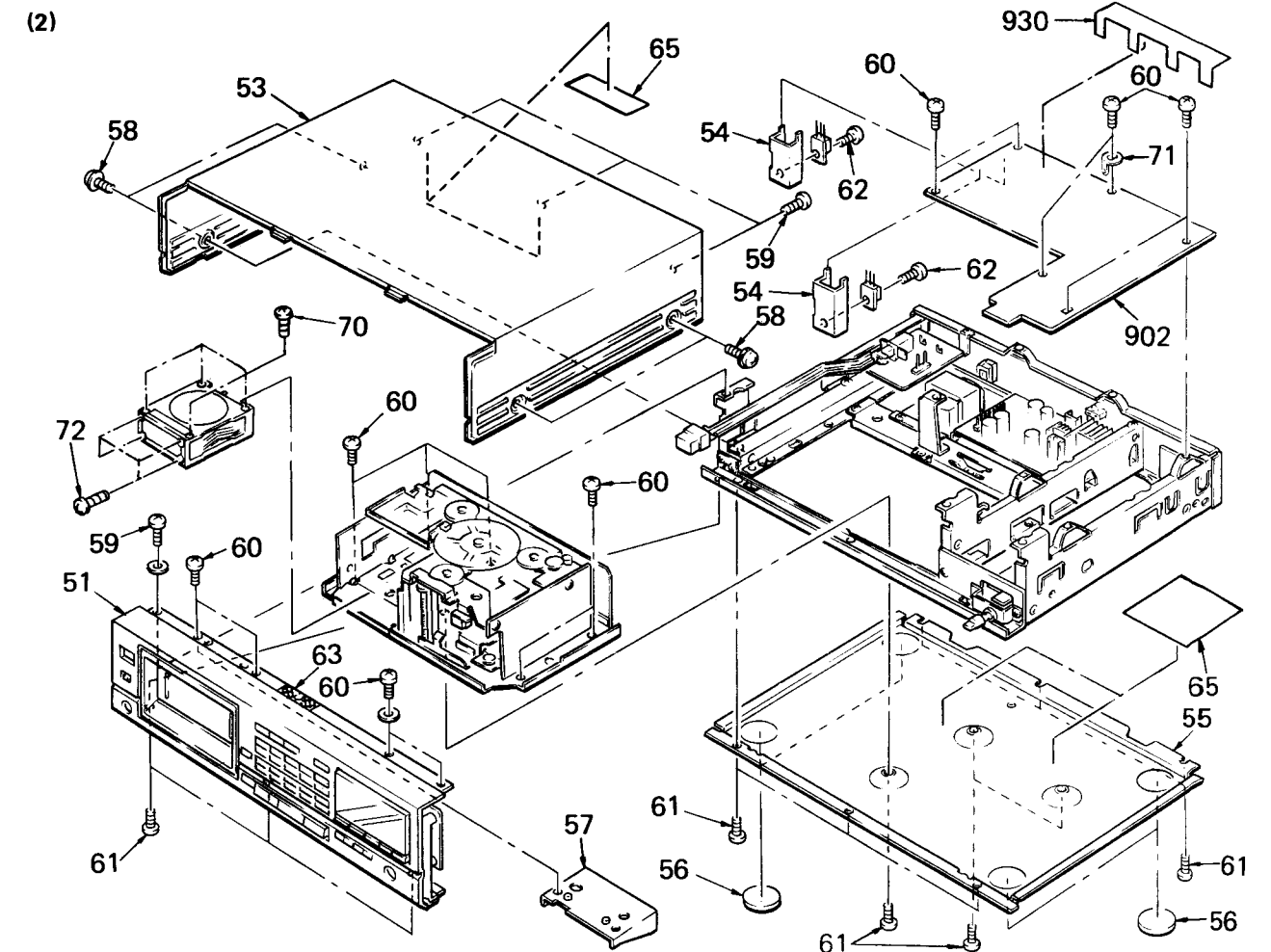
The construction parts of an assembled part are indicated with a collation number in the remark column.

Color Indication of Appearance Parts
Example: (RED) KNOB, BALANCE (WHITE)
Cabinet's Color Parts' Color

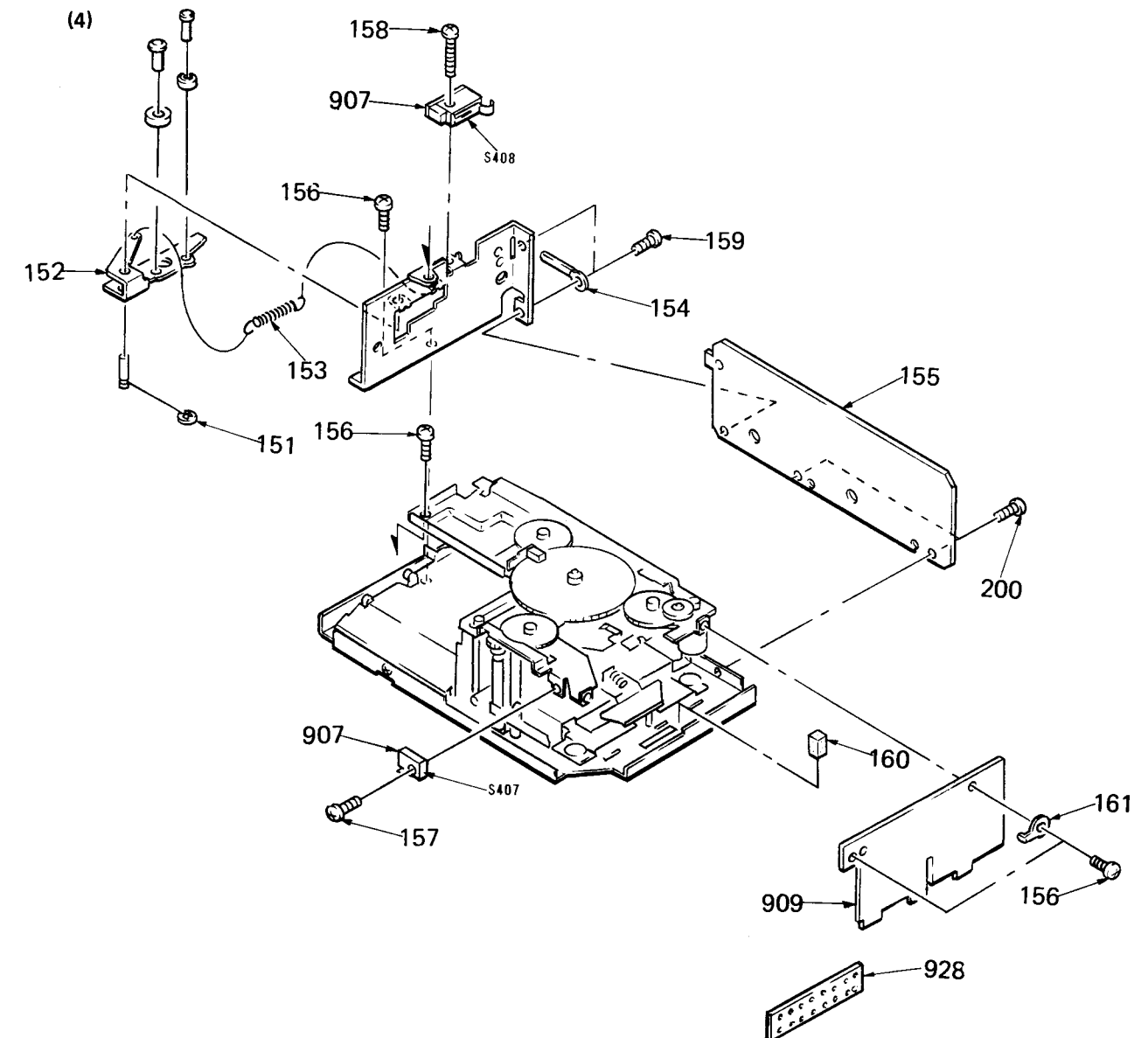
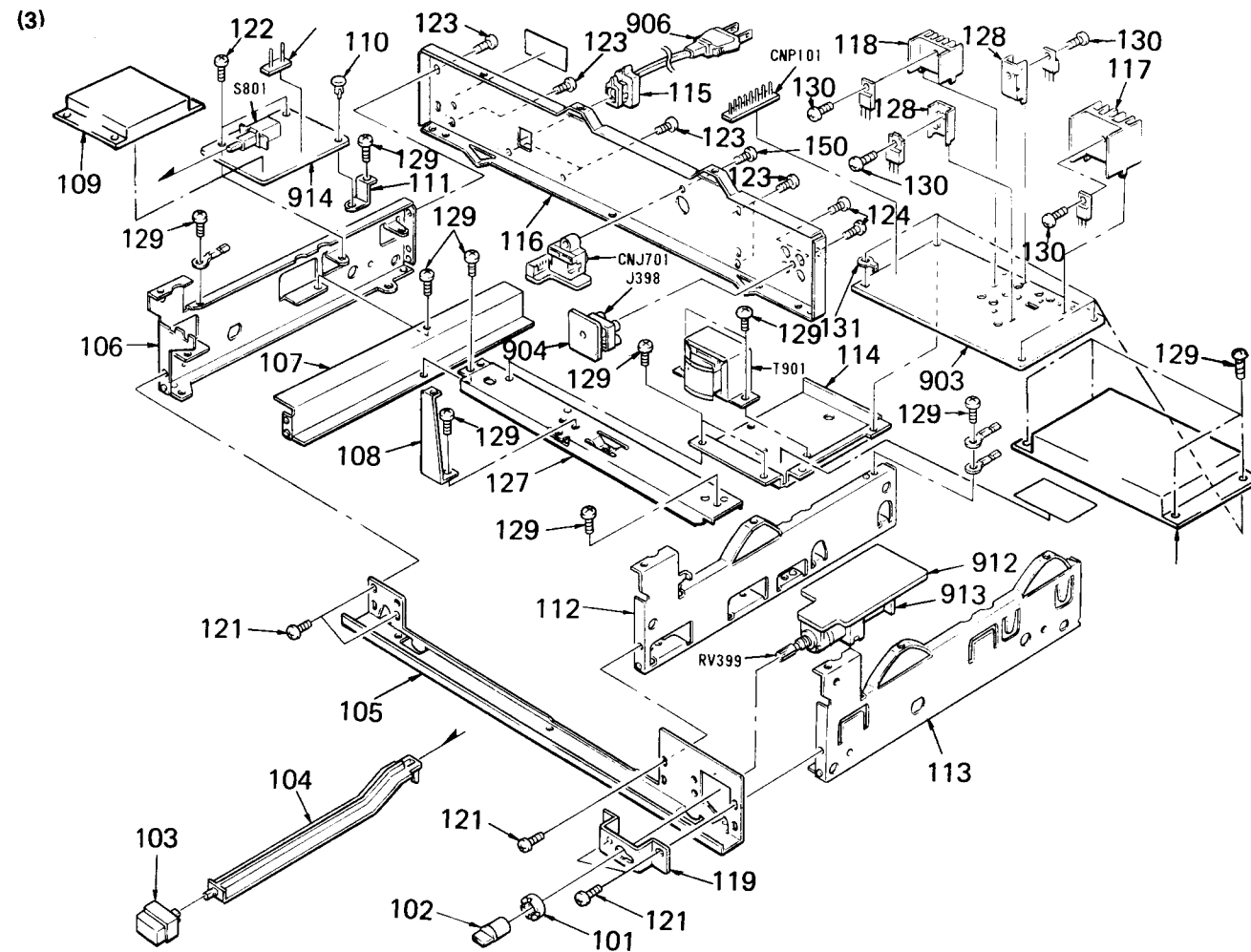
The components identified by shading and mark  are critical for safety. Replace only with part number specified.

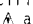



No.	Part No.	Description	Remarks	No.	Part No.	Description	Remarks
1	A-4636-217-A	PANEL ASSY, FRONT		21	3-423-147-11	SPACER (DIA.6)	
2	4-887-131-00	KNOB, SLIDE SWITCH		22	3-703-710-41	STICKER, SONY SYMBOL (12)	
5	3-331-931-01	SPRING		23	7-685-534-19	SCREW +BTP 2.6X8 TYPE2 N-S	
7	*4-917-487-01	DUMPER (P)		24	7-685-646-71	SCREW +BVTP 3X8 TYPE2 N-S	
8	*4-917-450-01	SHAFT, PACK DOOR		25	*4-917-499-01	CUSHION (SELECT)	
9	4-917-457-01	DOOR, PACK		26	*4-917-443-01	SPACER, REMOTE CONTROL	
10	4-917-474-01	ESCUTCHEON		27	*4-918-701-01	SPACER (AP)	
11	*4-917-449-01	LEVER, PACK RETAINER		28	*4-917-488-01	CUSHION (P)	
12	*X-4917-410-1	ROLLER ASSY, PACK		29	7-685-146-19	SCREW +BVTP 3X8, TYPE2	
13	*4-911-676-01	SPACER, LED		30	*4-917-485-01	SPACER, FL TUBE	
14	4-917-463-01	BUTTON, AP		50	3-701-437-11	WASHER	
16	4-917-462-11	BUTTON, SELECT		900	*1-620-694-11	PC BOARD, TIMER	
17	4-917-461-01	BUTTON, MODE		901	*A-4657-032-A	MOUNTED PCB, DISPLAY	
18	4-917-462-01	BUTTON, SELECT		915	*1-620-693-11	PC BOARD, HEADPHONE	
19	A-4675-161-A	BASE ASSY, BUTTON		927	*1-620-692-11	PC BOARD, FUNCTION	
20	4-912-926-01	INDICATE BOARD					



No.	Part No.	Description	Remarks	No.	Part No.	Description	Remarks
53	4-917-476-01	CASE		62	2-259-121-00	SCREW, TR	
54	*3-309-144-01	HEAT SINK		63	*4-917-495-01	CUSHION (CASE)	
55	*4-917-477-01	PLATE, BOTTOM		65	*4-913-952-01	DUMPER (A)	
56	4-917-453-01	FOOT		66	*4-913-953-01	DUMPER (B)	
57	*4-917-464-01	STOPPER, DOOR		70	7-685-103-14	SCREW +P 2X5 TYPE2 N-S	
58	4-886-821-01	SCREW, M3 CASE		71	4-870-539-00	PLATE, GROUND	
59	7-685-751-09	SCREW +BVTT 3X6 (S)		902	*A-4651-095-A	MOUNTED PCB, MAIN	
60	7-685-871-01	SCREW +BVTT 3X6 (S)		926	*1-560-242-21	BUS BAR 4P	
61	3-703-108-21	SCREW +BV 3X6, S TIGHT					

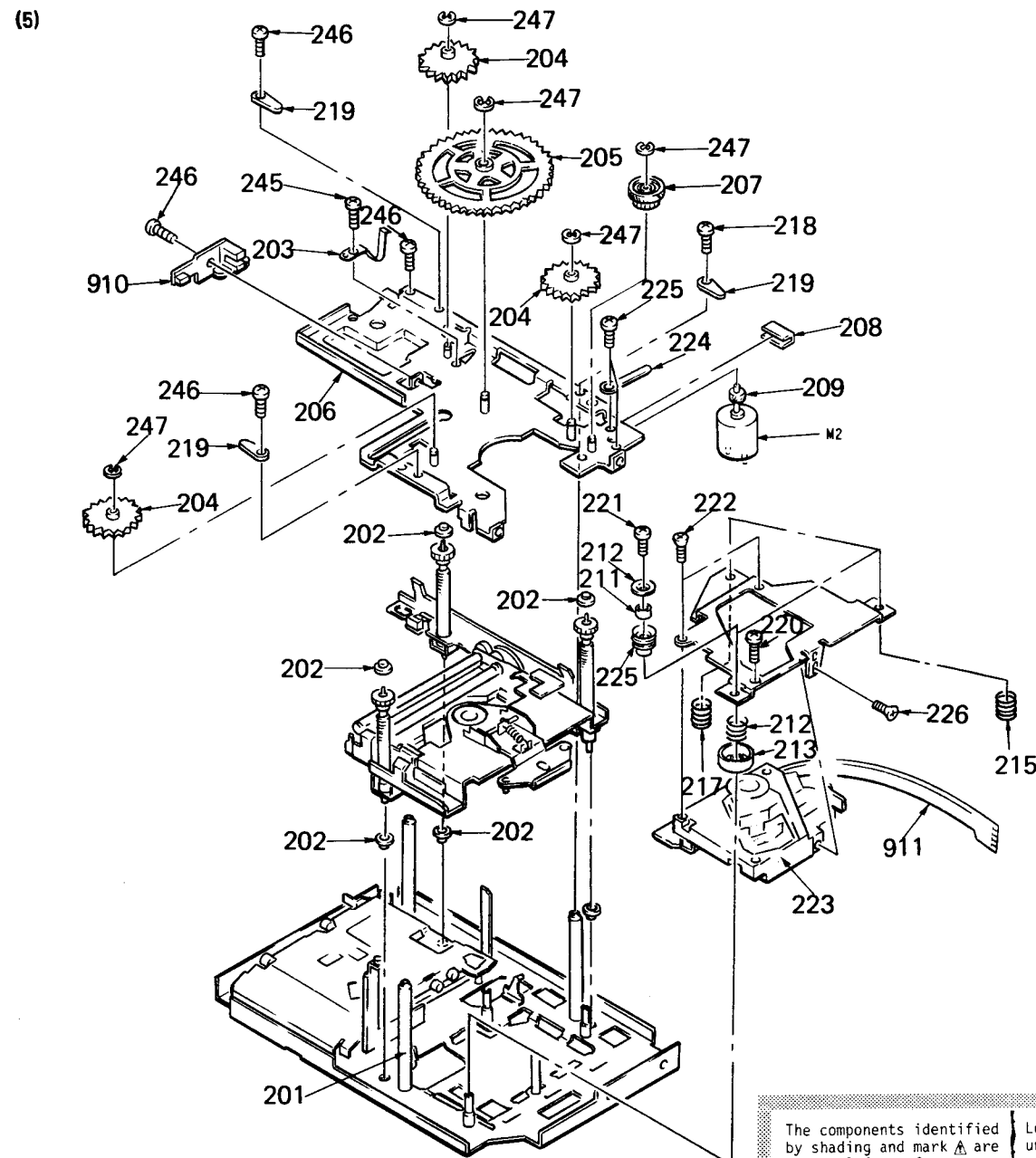


The components identified by shading and mark  are critical for safety. Replace only with part number specified.

Les composants identifiés par une trame et une marque  sont critiques pour la sécurité. Ne les remplacer que par une pièce portant le numéro spécifié.

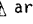
No.	Part No.	Description	Remarks	No.	Part No.	Description	Remarks
101	4-917-456-01	NUT, SPECIAL		118	*4-363-147-00	HEAT SINK, H.PIN	
102	4-917-454-01	KNOB, LOV		119	*4-917-445-01	BRACKET, VOLUME	
103	4-917-460-01	KNOB, POWER		120	7-685-872-01	+BVTT 3X8 CZN	
104	*4-917-459-01	LEVER, POWER SWITCH		121	7-685-871-01	SCREW +BVTT 3X6 (S)	
105	*4-917-472-01	FRAME, SUB		123	3-703-473-00	SCREW, TERMINAL	
106	*4-917-467-01	FRAME (LEFT)		127	*4-917-471-01	REINFORCEMENT	
107	*4-917-470-01	BRACKET, MD		128	*3-309-144-01	HEAT SINK	
108	*4-917-447-01	BRACKET (M), PC BOARD		129	7-685-871-01	SCREW +BVTT 3X6 (S)	
109	*4-917-486-01	COVER		130	2-259-121-00	SCREW, TR	
110	4-812-134-11	RIVET NYLON, 3.5		131	4-870-539-00	PLATE, GROUND	
111	*4-917-446-01	BRACKET (P), PC BOARD		903	*A-4653-067-A	MOUNTED PCB, POWER	
112	*4-917-468-01	FRAME (MIDDLE)		904	*1-620-691-11	PC BOARD, SUB CORD	
113	*4-917-469-01	FRAME (RIGHT)		905	*1-620-688-11	PC BOARD, LINE OUT	
114	*4-917-458-01	BRACKET, TRANSFORMER		906	*1-557-577-11	CORD, POWER	
115	3-703-244-00	BUSHING (2104), CORD		912	*1-620-689-11	PC BOARD, VOLUME	
116	*4-917-401-11	PLATE, JACK		913	*1-620-690-11	PC BOARD, MOTOR	
117	*4-363-146-00	HEAT SINK, V.OUT		914	*1-620-698-11	PC BOARD, POWER SW	

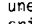
No.	Part No.	Description	Remarks	No.	Part No.	Description	Remarks
150	7-685-646-79	SCREW +BVTP 3X8 TYPE2 N-S		159	7-682-544-04	SCREW +P 3X3	
151	7-624-118-01	RING, RETAINING E-2.5		160	9-911-843-XX	CUSHION	
152	*X-4917-404-1	LEVER ASSY, PACK RETAINER		161	4-870-539-00	PLATE, GROUND	
153	4-917-411-01	SPRING (STOPPER), TENSION		907	*1-617-987-12	PC BOARD, COMMON	
155	*4-917-436-01	PLATE (REAR)		908	*1-617-987-12	PC BOARD, COMMON	
156	7-685-791-09	SCREW +BVTT 2.6X5 (S)		909	*A-4654-002-A	MOUNTED PCB, RF	
157	7-685-855-01	+BVTT 2X10 (S)		928	*1-620-697-11	PC BOARD, TRANSLATION	
158	7-621-255-25	SCREW +P 2X4					

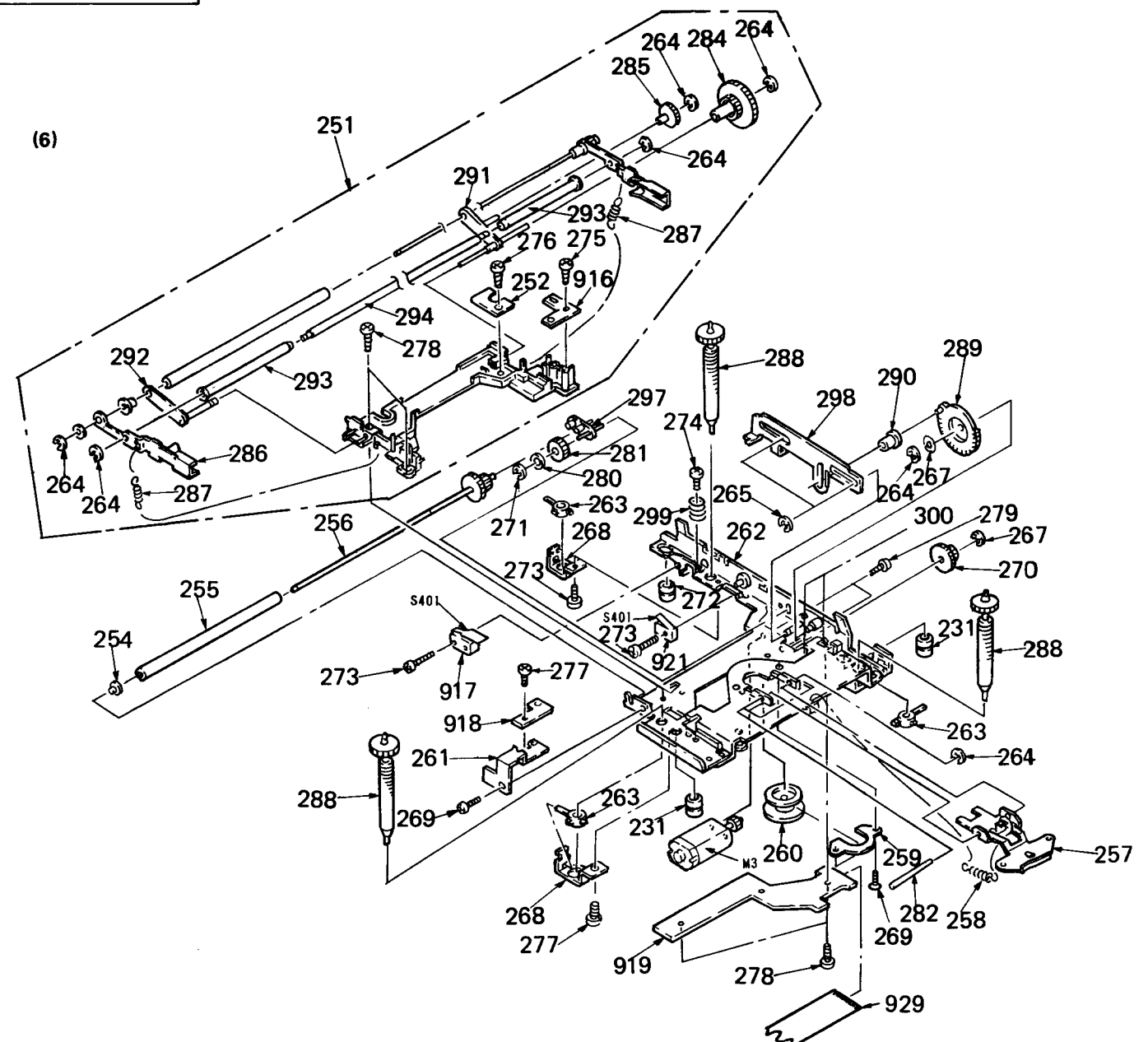


No.	Part No.	Description	Remarks
201	3-329-549-01	SHAFT, E FIXED	
202	3-329-595-01	BEARING (UPPER&LOWER), POLY	
203	4-917-405-01	SPRING	
204	4-917-406-01	GEAR (MIDDLE), ELEVATOR	
205	3-331-952-01	GEAR (LARGE), ELEVATOR	
206	*X-4917-416-1	PLATE ASSY, TOP	
207	4-917-420-01	GEAR (SMALL), ELEVATOR	
208	3-831-441-11	CUSHION	
209	4-917-404-01	GEAR, MOTOR	
210	*X-3329-510-1	LEVER ASSY, SLIDER SET	
211	4-917-417-01	SPACER, FLOATING	
212	4-917-412-01	SPRING, COMPRESSION	
213	*4-917-424-01	RETAINER, SPRING	
214	*X-4917-408-1	CHASSIS ASSY, BOTTOM	
215	4-917-413-01	SPRING, COMPRESSION	
216	*4-917-438-01	PLATE, BASE, OPTICS	

No.	Part No.	Description	Remarks
217	4-917-414-01	SPRING, COMPRESSION	
218	7-682-545-09	SCREW +B 3X4	
219	3-331-907-01	RETAINER, SCREW, FEED	
220	*4-917-423-01	RETAINER, FLOATING	
221	7-621-255-10	SCREW +P 2X3	
222	7-685-203-01	SCREW +KTP 2X5 TYPE 2	
223	A-8-848-057-01	PICKUP, OPTICAL KSM-100H	
224	*3-493-875-00	HOLDER, WIRE	
225	7-682-544-04	SCREW +P 3X3	
226	7-621-255-25	SCREW +P 2X4	
245	7-621-775-00	SCREW +P 2.6X3	
246	7-685-791-09	SCREW +BVT 2.6X5 (S)	
247	7-624-118-01	RING, RETAINING E-2.5	
910	*1-621-309-11	PC BOARD, EHS	
911	*1-620-723-11	PC BOARD, RF FLEXIBLE	
M3	A-3239-495-A	M3 ASSY	

The components identified by shading and mark  are critical for safety. Replace only with part number specified.

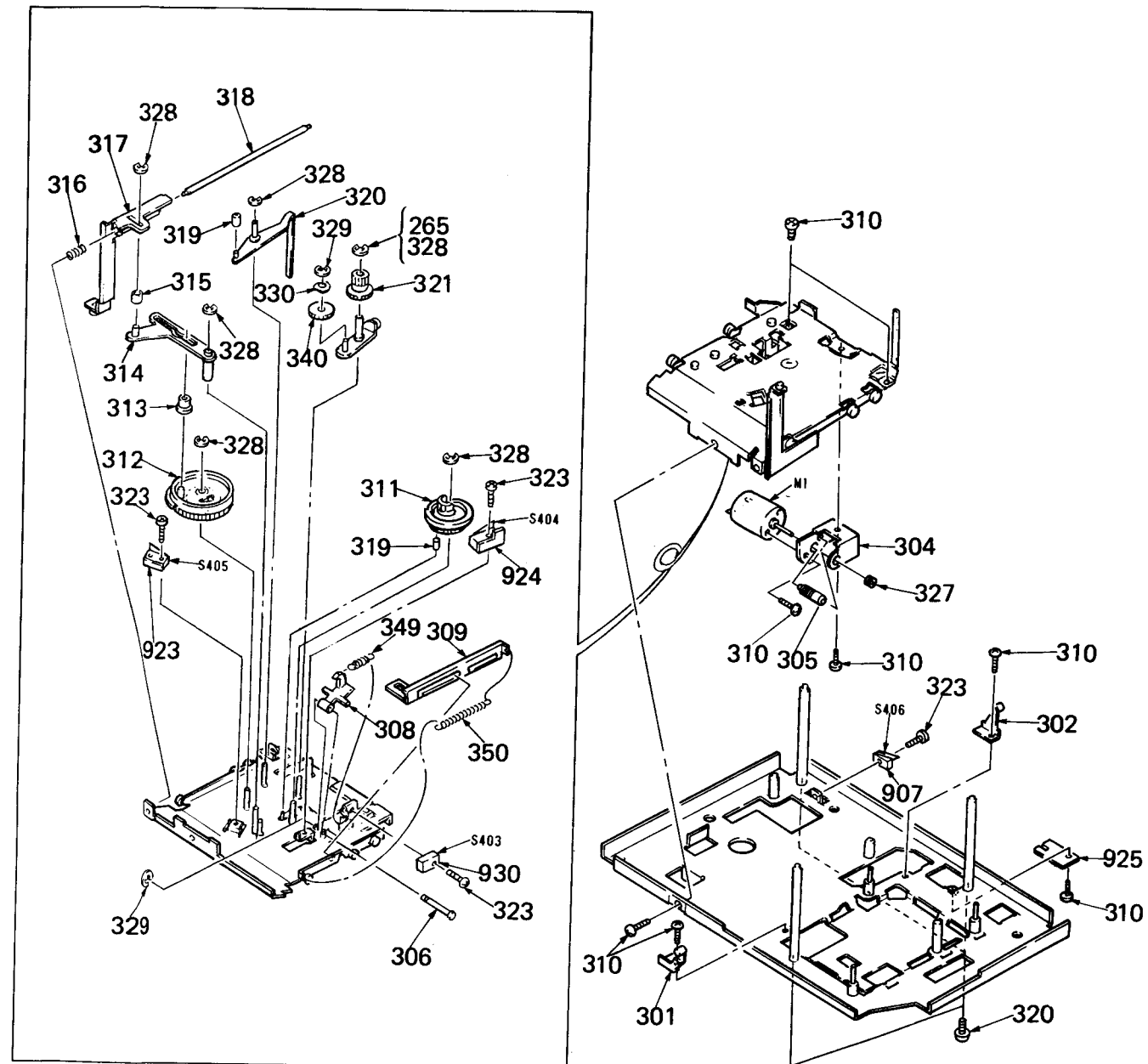
Les composants identifiés par une trame et une marque  sont critiques pour la sécurité. Ne les remplacer que par une pièce portant le numéro spécifié.



No.	Part No.	Description	Remarks
251	X-4917-415-1	OVERALL ASSY, DISK GUIDE	
252	*3-333-006-01	REINFORCEMENT	
253	*X-3329-529-0	GUIDE (GENERAL) ASSY, DISK	
254	3-329-558-01	BEARING, MAIN ROLLER	
255	3-323-231-02	ROLLER (LOWER)	
256	X-3329-520-1	SHAFT (LOWER) ASSY, ROLLER	
257	*X-4917-401-1	ARM ASSY, CHUCK	
258	4-917-416-01	SPRING (CHUCK), TENSION	
259	*4-917-402-01	SUPPORT, CHUCK	
260	A-3239-494-A	CHUCKING COMPLETE ASSY	
261	*3-331-908-01	BRACKET, PHOTO	
262	*X-4917-407-1	CHASSIS ASSY, E	
263	3-329-560-01	SCREW, M6	
264	7-624-102-04	STOP RING 1.5, TYPE -E	
265	7-624-104-04	STOP RING 2.0, TYPE -E	
267	3-895-818-01	WASHER, POLYETHYLENE, COTTER	
268	*3-329-570-01	PLATE, SCREW	
269	7-627-452-28	SCREW, PRECISION +K 2X4	
270	4-917-421-01	GEAR (B), ROLLER	
271	3-321-813-11	WASHER, COTTER POLYETHYLENE	
273	7-685-855-01	+BVT 2X10 (S)	
274	7-621-772-40	SCREW +B 2X8	
275	7-685-132-14	SCREW +P 2.6X5 TYPE2 NON-SLIT	
276	7-621-773-95	SCREW +B 2.6X6	
277	7-685-781-04	SCREW +BVT 2X4 (S)	
278	7-685-791-09	SCREW +BVT 2.6X5 (S)	
279	7-621-255-10	SCREW +P 2X3	

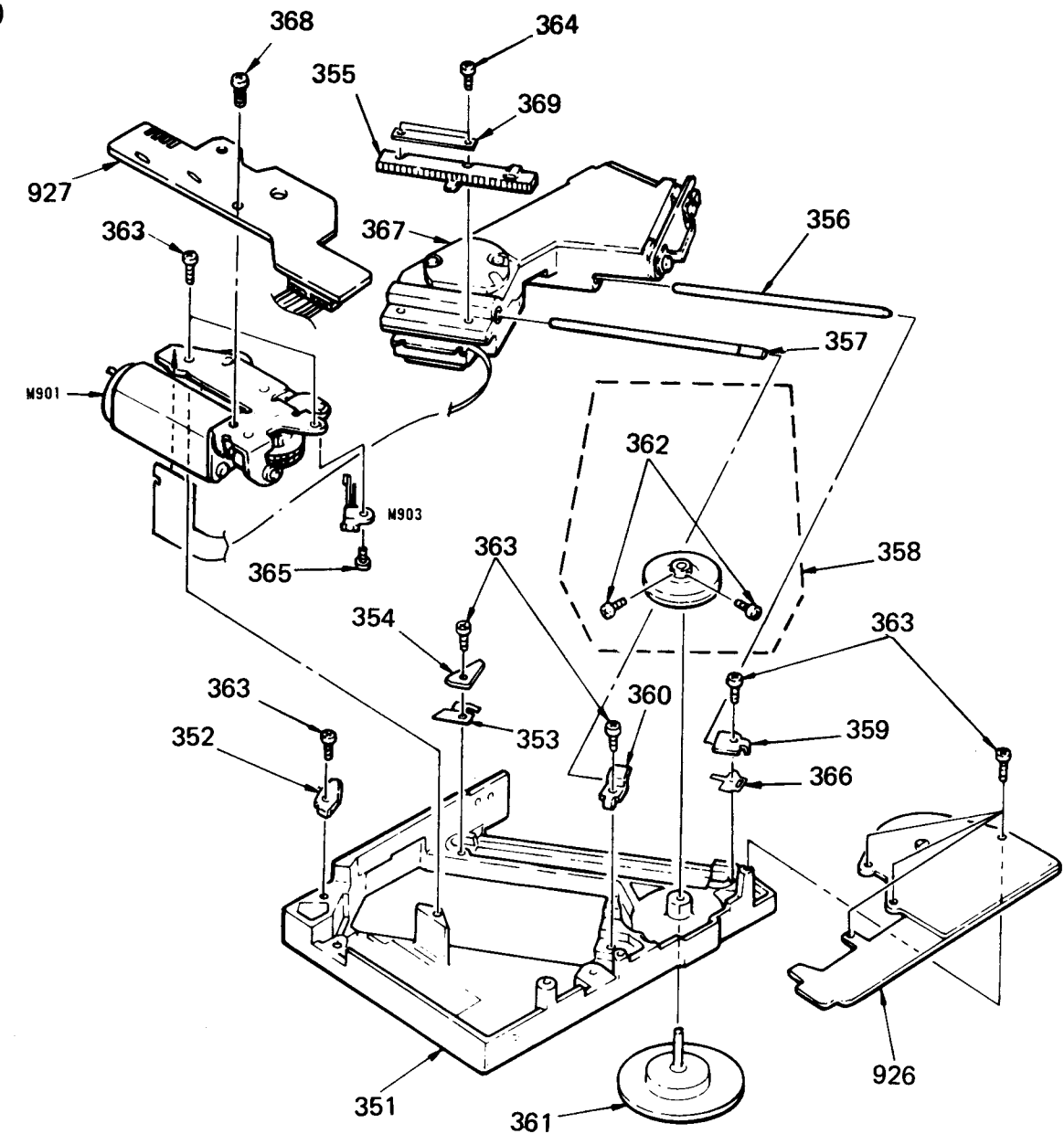
No.	Part No.	Description	Remarks
280	3-329-553-01	SPRING, E	
281	3-329-555-01	GEAR (E), R	
282	*3-329-559-01	SHAFT, DISK CHUCK	
284	3-331-914-01	GEAR, ROLLER 3 STEP	
285	3-331-924-01	GEAR (G), ROLLER	
286	3-534-411-01	WASHER (R)	
287	3-547-665-11	SPRING, TENSION	
288	X-3329-524-1	SCREW ASSY, FEED	
289	3-331-943-01	GEAR (F), R	
290	3-329-547-01	ROLLER, IDLE	
291	*X-3329-516-1	LEVER (B) ASSY, LINK	
292	*X-3329-517-1	LEVER (F) ASSY, LINK	
293	X-3329-518-1	ROLLER (UPPER) ASSY	
294	*3-329-552-01	SHAFT, SIDE ROLLER	
295	*X-4917-414-1	SHAFT (UPPER) ASSY, ROLLER	
297	*X-3329-522-1	LEVER ASSY, R	
298	*3-331-944-01	LEVER, SLIDE	
299	3-534-512-01	SPRING, COMPRESSION	
300	3-831-441-11	CUSHION	
916	*1-617-991-13	PC BOARD, DOE	
917	*1-617-986-13	PC BOARD, CB SW	
918	*1-617-990-12	PC BOARD, DPT	
919	*1-617-995-11	PC BOARD, E	
920	A-4608-332-A	M2 ASSY	
921	*1-617-985-13	PC BOARD, M1 SW	
929	*1-620-724-11	PC BOARD, MD FLEXIBLE	

(7)




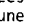
No.	Part No.	Description	Remarks	No.	Part No.	Description	Remarks
301	*X-4917-402-1	OPENER (LEFT) ASSY, CHUCK		318	3-331-904-01	SHAFT, LINEAR SLIDER	
302	*X-4917-403-1	OPENER (RIGHT) ASSY, CHUCK		319	3-329-580-01	ROLLER, CAM	
304	4-917-418-01	BRACKET, MOTOR		320	7-682-545-09	SCREW +P 3X4	
305	7-671-156-01	BALL, STAINLESS		321	3-329-590-01	WHEEL, WORM	
306	*3-329-573-01	SHAFT, LOCK HOOK		323	7-621-255-55	SCREW +P 2X8	
307	*X-4917-406-1	CHASSIS ASSY, PACK		327	3-489-073-00	SCREW, THRUST	
308	3-331-902-01	HOOK, PACK LOCK		328	7-624-104-04	STOP RING 2.0, TYPE -E	
309	*4-917-439-01	LEVER, EJECT		329	7-624-102-04	STOP RING 1.5, TYPE -E	
310	7-685-791-09	SCREW +BVT 2.6X5 (S)		330	3-329-553-01	SPRING, E	
311	4-917-437-01	GEAR (3), EJECT CAM		340	3-329-591-01	GEAR WHEEL, WURM	
312	X-3329-513-1	GEAR ASSY, CAM		349	3-535-369-XX	SPRING, TENSION	
313	3-331-905-01	ROLLER (A)		922	A-4608-331-A	M1 ASSY	
314	*X-3329-507-1	LEVER ASSY, LINEAR		923	*1-617-994-12	PC BOARD, LOT SW	
315	3-331-927-01	ROLLER, LINEAR LEVER		924	*1-617-993-12	PC BOARD, EJ SW	
316	3-568-315-01	SPRING, COMPRESSION		925	*1-617-987-12	PC BOARD, COMMON	
317	X-4917-417-1	SLIDER ASSY, LINEAR		930	*1-617-992-12	PC BOARD, PS SW	

(8)



No.	Part No.	Description	Remarks	No.	Part No.	Description	Remarks
351	X-3320-103-3	CHASSIS ASSY		363	3-703-816-11	SCREW (M1.4X4)	
352	3-320-103-01	RETAINER (B)		364	7-627-552-77	SCREW PRECISION +P 1.7X6	
353	3-320-130-01	SPRING (A), LEAF		365	7-627-553-37	SCREW PRECISION +P 2X3	
354	3-320-140-01	RETAINER (C)		366	3-320-131-01	SPRING (B), LEAF	
355	3-320-121-01	RACK		367	A-8-848-057-01	KSM-100H	
356	3-320-107-01	SHAFT (B)		368	7-685-851-01	SCREW +BVT 2X4	
357	3-320-106-01	SHAFT (B)		369	3-320-133-01	SPACER, RACK	
358	X-2622-803-1	ROTOR ASSY		931	X-2622-801-1	PC BOARD ASSY, STATOR	
359	3-320-105-01	RETAINER (D)		932	1-617-121-11	AX-1 BOARD	
360	3-320-102-01	RETAINER (A)		M901	X-3320-102-1	MOTOR ASSY, SLED	
361	X-3320-101-1	TURNABLE ASSY		S903	1-553-198-00	SWITCH, LEAF (SLEDLIMIT)	
362	2-622-805-01	SCREW					

The components identified by shading and mark  are critical for safety. Replace only with part number specified.

Les composants identifiés par une trame et une marque  sont critiques pour la sécurité. Ne les remplacer que par une pièce portant le numéro spécifié.

SECTION 3 ELECTRICAL PARTS LIST

NOTE:

- Items marked " * " are not stocked since they are seldom required for routine service. Some delay should be anticipated when ordering these items.
- If there are two or more same circuits in a set such as a stereophonic machine, only typical circuit parts may be indicated and capacitors and resistors in other same circuits may be omitted.

CAPACITORS:

MF: μ F, PF: μ F.

RESISTORS

- All resistors are in ohms.
- F : nonflammable

COILS

• MMH : mH, UH : μ H

SEMICONDUCTORS

In each case, U : μ , for example:UA...: μ A..., UPA...: μ PA..., UPC...: μ PC, UPD...: μ PD...

The components identified by shading and mark **A** are critical for safety. Replace only with part number specified.

Les composants identifiés par une trame et une marque **A** sont critiques pour la sécurité. Ne les remplacer que par une pièce portant le numéro spécifié.

ELECTRICAL PARTS

Ref.No.	Part No.	Description				
900	*1-620-694-11	PC BOARD, TIMER				
901	*A-4657-032-A	MOUNTED PCB, DISPLAY				
902	*A-4651-095-A	MOUNTED PCB, MAIN				
903	*A-4653-067-A	MOUNTED PCB, POWER				
904	*1-620-691-11	PC BOARD, SUB CORD				
905	*1-620-688-11	PC BOARD, LINE OUT				
906	1-557-577-11	CORD, POWER				
907	*1-617-987-12	PC BOARD, COMMON				
908	*1-617-987-12	PC BOARD, COMMON				
909	*A-4654-002-A	MOUNTED PCB, RF				
910	*1-621-309-11	PC BOARD, EHS				
911	*1-620-723-11	PC BOARD, RF FLEXIBLE				
912	*1-620-689-11	PC BOARD, VOLUME				
913	*1-620-690-11	PC BOARD, MOTOR				
914	*1-620-698-11	PC BOARD, POWER SW				
915	*1-620-693-11	PC BOARD, HEADPHONE				
916	*1-617-991-13	PC BOARD, DOE				
917	*1-617-986-13	PC BOARD, CB SW				
918	*1-617-990-12	PC BOARD, DPT				
919	*1-617-995-11	PC BOARD, E				
920	A-4608-332-A	M2 ASSY				
921	*1-617-985-13	PC BOARD, M1 SW				
922	A-4608-331-A	M1 ASSY				
923	*1-617-994-12	PC BOARD, LOT SW				
924	*1-617-993-12	PC BOARD, EJ SW				
925	*1-617-987-12	PC BOARD, COMMON				
926	*1-560-242-21	BUS BAR 4P				
927	*1-620-692-11	PC BOARD, FUNCTION				
928	*1-620-697-11	PC BOARD, TRANSLATION				
929	*1-620-724-11	PC BOARD, MD FLEXIBLE				
930	*1-617-992-12	PC BOARD, PS SW				
931	X-2622-801-1	PC BOARD ASSY, STATOR				
932	1-617-121-11	AX-1 BOARD				
C101	1-123-338-00	ELECT	2200MF	20%	25V	
C102	1-123-338-00	ELECT	2200MF	20%	25V	
C105	1-124-897-11	ELECT	3300MF	20%	16V	
C106	1-124-557-11	ELECT	1000MF	20%	25V	
C107	1-124-473-11	ELECT	1000MF	20%	10V	
C108	1-124-472-11	ELECT	470MF	20%	10V	
C109	1-124-475-11	ELECT	470MF	20%	16V	
C110	1-124-907-00	ELECT	10MF	20%	50V	
C111	1-124-907-00	ELECT	10MF	20%	50V	
C112	1-124-121-00	ELECT	100MF	20%	35V	
C113	1-124-910-11	ELECT	47MF	20%	50V	
C114	1-124-121-00	ELECT	100MF	20%	35V	

ELECTRICAL PARTS

Ref.No.	Part No.	Description				
C115	1-124-563-11	ELECT	2200MF	20%	25V	
C116	1-124-907-00	ELECT	10MF	20%	50V	
C117	1-124-443-00	ELECT	100MF	20%	10V	
C201	1-162-213-31	CERAMIC	39PF	5%	50V	
C202	1-162-213-31	CERAMIC	39PF	5%	50V	
C203	1-161-974-00	CERAMIC	0.1MF	20%	16V	
C204	1-161-974-00	CERAMIC	0.1MF	20%	16V	
C205	1-123-820-00	ELECT	33MF	20%	16V	
C206	1-162-306-31	CERAMIC	0.01MF	20%	16V	
C207	1-124-903-00	ELECT	1MF	20%	50V	
C208	1-123-820-00	ELECT	33MF	20%	16V	
C209	1-161-974-00	CERAMIC	0.1MF	20%	16V	
C210	1-136-162-00	FILM	0.056MF	5%	50V	
C211	1-130-471-00	MYLAR	0.001MF	5%	50V	
C212	1-130-482-00	MYLAR	0.0082MF	5%	50V	
C213	1-136-155-00	FILM	0.015MF	5%	50V	
C214	1-162-211-31	CERAMIC	33PF	5%	50V	
C215	1-124-481-11	ELECT	22MF	20%	25V	
C221	1-102-647-00	CERAMIC	39PF	5%	50V	
C222	1-102-658-00	CERAMIC	180PF	5%	50V	
C223	1-102-725-00	CERAMIC	36PF	5%	50V	
C224	1-162-302-31	CERAMIC	0.0022MF	2%	16V	
C225	1-123-661-00	ELECT	100MF	2%	6.3V	
C226	1-162-302-31	CERAMIC	0.0022MF	2%	16V	
C227	1-123-661-00	ELECT	100MF	2%	6.3V	
C228	1-162-282-31	CERAMIC	100PF	1%	50V	
C229	1-136-153-00	FILM	0.01MF	5%	50V	
C230	1-162-286-31	CERAMIC	220PF	1%	50V	
C231	1-124-927-11	ELECT	4.7MF	2%	50V	
C232	1-162-292-31	CERAMIC	680PF	1%	50V	
C233	1-124-907-00	ELECT	10MF	2%	50V	
C241	1-123-609-00	ELECT	0.33MF	2%	50V	
C242	1-136-161-00	FILM	0.047MF	5%	50V	
C243	1-130-475-00	MYLAR	0.0022MF	5%	50V	
C244	1-123-661-00	ELECT	100MF	2%	6.3V	
C245	1-136-153-00	FILM	0.01MF	5%	50V	
C246	1-131-371-00	TANTALUM	10MF	1%	16V	
C247	1-124-904-00	ELECT	2.2MF	2%	50V	
C248	1-136-162-00	FILM	0.056MF	5%	50V	
C249	1-130-474-00	MYLAR	0.0018MF	5%	50V	
C250	1-130-479-00	MYLAR	0.0047MF	5%	50V	
C251	1-162-282-31	CERAMIC	100PF	1%	50V	
C252	1-136-164-00	FILM	0.082MF	5%	50V	
C253	1-162-282-31	CERAMIC	100PF	1%	50V	
C254	1-123-607-00	ELECT	0.1MF	2%	50V	
C255	1-162-302-31	CERAMIC	0.0022MF	2%	16V	

ELECTRICAL PARTS

Ref.No.	Part No.	Description			
C256	1-162-302-31	CERAMIC	0.0022MF	20%	16V
C257	1-162-199-31	CERAMIC	10PF	5%	50V
C258	1-162-302-31	CERAMIC	0.0022MF	20%	16V
C259	1-124-903-00	ELECT	1MF	20%	50V
C260	1-123-323-00	ELECT	470MF	20%	16V
C261	1-123-323-00	ELECT	470MF	20%	16V
C262	1-123-661-00	ELECT	100MF	20%	6.3V
C263	1-130-479-00	MYLAR	0.0047MF	5%	50V
C264	1-124-903-00	ELECT	1MF	20%	50V
C265	1-130-477-00	MYLAR	0.0033MF	5%	50V
C285	1-123-820-00	ELECT	33MF	20%	16V
C286	1-130-475-00	MYLAR	0.0022MF	5%	50V
C287	1-124-904-00	ELECT	2.2MF	20%	50V
C288	1-162-306-31	CERAMIC	0.01MF	20%	16V
C289	1-162-294-31	CERAMIC	0.001MF	10%	50V
C290	1-162-294-31	CERAMIC	0.001MF	10%	50V
C291	1-162-282-31	CERAMIC	100PF	10%	50V
C292	1-162-306-31	CERAMIC	0.01MF	20%	16V
C293	1-162-211-31	CERAMIC	33PF	5%	50V
C294	1-162-211-31	CERAMIC	33PF	5%	50V
C295	1-123-332-00	ELECT	47MF	20%	16V
C296	1-161-974-00	CERAMIC	0.1MF	20%	16V
C297	1-161-974-00	CERAMIC	0.1MF	20%	16V
C298	1-161-974-00	CERAMIC	0.1MF	20%	16V
C299	1-161-974-00	CERAMIC	0.1MF	20%	16V
C300	1-123-607-00	ELECT	0.1MF	20%	50V
C301	1-124-903-00	ELECT	1MF	20%	50V
C331	1-123-323-00	ELECT	470MF	20%	16V
C332	1-104-280-11	POLYSTYRENE	120PF	5%	50V
C333	1-123-318-00	ELECT	33MF	20%	16V
C334	1-123-318-00	ELECT	33MF	20%	16V
C335	1-123-318-00	ELECT	33MF	20%	16V
C338	1-123-357-00	ELECT	22MF	20%	50V
C339	1-107-322-00	MICA	22PF	5%	500V
C340	1-123-323-00	ELECT	470MF	20%	16V
C341	1-123-335-00	ELECT	330MF	20%	25V
C345	1-130-305-00	FILM	0.022MF	5%	100V
C346	1-161-974-00	CERAMIC	0.1MF	20%	16V
C347	1-123-308-00	ELECT	220MF	20%	10V
C351	1-124-478-11	ELECT	100MF	20%	25V
C355	1-162-290-31	CERAMIC	470PF	10%	50V
C361	1-123-323-00	ELECT	470MF	20%	16V
C362	1-104-280-11	POLYSTYRENE	120PF	5%	50V
C363	1-123-318-00	ELECT	33MF	20%	16V
C364	1-123-318-00	ELECT	33MF	20%	16V
C365	1-123-318-00	ELECT	33MF	20%	16V
C368	1-123-357-00	ELECT	22MF	20%	50V
C369	1-107-322-00	MICA	22PF	5%	500V
C370	1-123-323-00	ELECT	470MF	20%	16V
C371	1-123-335-00	ELECT	330MF	20%	25V
C381	1-124-478-11	ELECT	100MF	20%	25V
C385	1-162-290-31	CERAMIC	470PF	10%	50V
C391	1-123-308-00	ELECT	220MF	20%	10V
C392	1-123-308-00	ELECT	220MF	20%	10V
C393	1-123-308-00	ELECT	220MF	20%	10V
C394	1-123-308-00	ELECT	220MF	20%	10V
C395	1-162-291-31	CERAMIC	560PF	10%	50V
C396	1-162-291-31	CERAMIC	560PF	10%	50V

ELECTRICAL PARTS

Ref.No.	Part No.	Description			
C397	1-161-974-00	CERAMIC	0.1MF	20%	16V
C398	1-130-305-00	FILM	0.022MF	5%	100V
C399	1-161-974-00	CERAMIC	0.1MF	20%	16V
C401	1-162-207-31	CERAMIC	22PF	5%	50V
C402	1-162-207-31	CERAMIC	22PF	5%	50V
C403	1-136-153-00	FILM	0.01MF	5%	50V
C404	1-136-159-00	FILM	0.033MF	5%	50V
C405	1-136-153-00	FILM	0.01MF	5%	50V
C406	1-124-468-11	ELECT	100MF	20%	6.3V
C407	1-123-607-00	ELECT	0.1MF	20%	50V
C408	1-124-468-11	ELECT	100MF	20%	6.3V
C409	1-124-468-11	ELECT	100MF	20%	6.3V
C410	1-131-385-00	TANTALUM	22MF	10%	6.3V
C411	1-124-902-00	ELECT	0.47MF	20%	50V
C412	1-136-159-00	FILM	0.033MF	5%	50V
C413	1-162-217-31	CERAMIC	56PF	5%	50V
C414	1-162-217-31	CERAMIC	56PF	5%	50V
C415	1-131-385-00	TANTALUM	22MF	10%	6.3V
C416	1-124-896-00	ELECT	33MF	20%	16V
C417	1-162-294-31	CERAMIC	0.001MF	10%	50V
C501	1-162-306-31	CERAMIC	0.01MF	20%	16V
C502	1-162-211-31	CERAMIC	33PF	5%	50V
C503	1-162-211-31	CERAMIC	33PF	5%	50V
C504	1-162-306-31	CERAMIC	0.01MF	20%	16V
C505	1-123-617-00	ELECT	10MF	20%	16V
C701	1-162-596-00	CERAMIC	0.022MF		25V
C801	1-161-744-00	CERAMIC	0.01MF		400V
C802	1-161-744-00	CERAMIC	0.01MF		400V
C803	1-161-744-00	CERAMIC	0.01MF		400V
C804	1-161-742-00	CERAMIC	0.0022MF	20%	400V
C805	1-161-742-00	CERAMIC	0.0022MF	20%	400V
C806	1-161-742-00	CERAMIC	0.0022MF	20%	400V
C807	1-161-742-00	CERAMIC	0.0022MF	20%	400V
C901	1-124-290-00	ELECT	47MF	20%	6.3V
C902	1-161-974-00	CERAMIC	0.1MF	20%	16V
CNJ701	1-563-486-11	SOCKET, CONNECTOR			
CNP101*1	535-121-00	TERMINAL			
CNP201*1	564-505-11	PLUG, CONNECTOR 2P			
CNP202*1	564-509-11	PLUG, CONNECTOR 6P			
CNP203*1	564-708-11	PIN, CONNECTOR (SMALL TYPE) 6P			
CNP204*1	564-708-11	PIN, CONNECTOR (SMALL TYPE) 6P			
CNP302*1	564-518-11	PLUG, CONNECTOR 3P			
CNP303*1	564-507-11	PLUG, CONNECTOR 4P			
CNP401	1-563-140-11	SOCKET, CONNECTOR 9P			
CNP402*1	564-725-11	PIN, CONNECTOR (SMALL TYPE) 9P			
CNP403*1	564-706-11	PIN, CONNECTOR (SMALL TYPE) 4P			
CNP404*1	562-882-11	SOCKET, CONNECTOR 12P			
CNP405*1	564-704-31	PIN, CONNECTOR (SMALL TYPE) 2P			
CNP406*1	564-704-11	PIN, CONNECTOR (SMALL TYPE) 2P			
CNP407*1	564-704-11	PIN, CONNECTOR (SMALL TYPE) 2P			
CNP408*1	564-707-11	PIN, CONNECTOR (SMALL TYPE) 5P			
CNP409*1	564-721-11	PIN, CONNECTOR (SMALL TYPE) 5P			
CNP410*1	564-708-11	PIN, CONNECTOR (SMALL TYPE) 6P			
CNP411*1	564-724-11	PIN, CONNECTOR (SMALL TYPE) 8P			
CNP412*1	564-724-31	PIN, CONNECTOR (SMALL TYPE) 8P			
CNP414*1	564-710-11	PIN, CONNECTOR (SMALL TYPE) 8P			
CNP415	1-564-729-11	PIN, CONNECTOR (SMALL TYPE) 13P			

ELECTRICAL PARTS

Ref.No.	Part No.	Description
CNP501*1-564-336-00	PIN, CONNECTOR 2P	
CNP502*1-564-666-11	PIN, CONNECTOR 10P	
CNP503*1-564-666-11	PIN, CONNECTOR 10P	
CNP504*1-564-704-11	PIN, CONNECTOR (SMALL TYPE) 2P	
CNP505*1-564-707-11	PIN, CONNECTOR (SMALL TYPE) 5P	
CNP506*1-564-712-11	PIN, CONNECTOR (SMALL TYPE) 10P	
CNP801*1-535-139-00	BASE POST 19MM (10MM PITCH) 2P	
CP501	1-232-847-11	COMPOSITION CIRCUIT BLOCK
CP502	1-233-082-11	COMPOSITION CIRCUIT BLOCK
D101	8-719-937-49	DIODE RDO2M
D102	8-719-884-01	DIODE 10DF2
D103	8-719-884-01	DIODE 10DF2
D104	8-719-884-01	DIODE 10DF2
D105	8-719-884-01	DIODE 10DF2
D106	8-719-200-23	DIODE 11E2TA2
D107	8-719-200-23	DIODE 11E2TA2
D108	8-719-200-23	DIODE 11E2TA2
D109	8-719-200-23	DIODE 11E2TA2
D110	8-719-940-77	DIODE 1SS132
D111	8-719-940-77	DIODE 1SS132
D112	8-719-940-77	DIODE 1SS132
D113	8-719-940-77	DIODE 1SS132
D115	8-719-940-77	DIODE 1SS132
D116	8-719-109-75	DIODE RD4.3ES-B2
D117	8-719-932-66	DIODE RD20ES-B1
D118	8-719-910-65	DIODE HZ6B1LTP
D119	8-719-929-15	DIODE HZS9.1NB2
D201	8-719-936-68	DIODE KV1260
D202	8-719-110-17	DIODE RD10ES-B2
D203	8-719-110-17	DIODE RD10ES-B2
D204	8-719-110-17	DIODE RD10ES-B2
D205	8-719-951-13	DIODE HZ5CLL
D206	8-719-921-11	DIODE HZ2ALL
D207	8-719-921-11	DIODE HZ2ALL
D208	8-719-940-77	DIODE 1SS132
D209	8-719-940-77	DIODE 1SS132
D210	8-719-940-77	DIODE 1SS132
D211	8-719-940-77	DIODE 1SS132
D212	8-719-940-77	DIODE 1SS132
D213	8-719-940-77	DIODE 1SS132
D214	8-719-940-77	DIODE 1SS132
D215	8-719-940-77	DIODE 1SS132
D216	8-719-940-77	DIODE 1SS132
D217	8-719-940-77	DIODE 1SS132
D218	8-719-940-77	DIODE 1SS132
D219	8-719-940-77	DIODE 1SS132
D220	8-719-940-77	DIODE 1SS132
D221	8-719-940-77	DIODE 1SS132
D222	8-719-940-77	DIODE 1SS132
D223	8-719-940-77	DIODE 1SS132
D224	8-719-940-77	DIODE 1SS132
D225	8-719-940-77	DIODE 1SS132
D226	8-719-940-77	DIODE 1SS132
D227	8-719-940-77	DIODE 1SS132
D228	8-719-940-77	DIODE 1SS132
D229	8-719-940-77	DIODE 1SS132
D230	8-719-940-77	DIODE 1SS132

ELECTRICAL PARTS

Ref.No.	Part No.	Description
D231	8-719-940-77	DIODE 1SS132
D232	8-719-940-77	DIODE 1SS132
D233	8-719-940-77	DIODE 1SS132
D234	8-719-100-75	DIODE RD4.3ES-B2
D235	8-719-940-77	DIODE 1SS132
D236	8-719-940-77	DIODE 1SS132
D301	8-719-951-13	DIODE HZ5CLL
D302	8-719-951-13	DIODE HZ5CLL
D401	8-719-812-31	DIODE TLR123
D402	8-719-812-31	DIODE TLR123
D403	8-719-940-77	DIODE 1SS132
D404	8-719-921-11	DIODE HZ2ALL
D405	8-719-911-06	DIODE 1SS106
D406	8-719-911-06	DIODE 1SS106
D407	8-719-911-06	DIODE 1SS106
D501	8-719-940-77	DIODE 1SS132
D502	8-719-940-77	DIODE 1SS132
D503	8-719-940-77	DIODE 1SS132
D504	8-719-940-77	DIODE 1SS132
D505	8-719-940-77	DIODE 1SS132
D506	8-719-940-77	DIODE 1SS132
D507	8-719-940-77	DIODE 1SS132
D508	8-719-940-77	DIODE 1SS132
D509	8-719-940-77	DIODE 1SS132
D510	8-719-907-86	DIODE BG5638S
D511	8-719-907-86	DIODE BG5638S
D512	8-719-907-85	DIODE AA5638S
D513	8-719-940-77	DIODE 1SS132
D514	8-719-907-85	DIODE AA5638S
D515	8-719-907-86	DIODE BG5638S
D516	8-719-907-85	DIODE AA5638S
D517	8-719-907-86	DIODE BG5638S
D518	8-719-907-85	DIODE AA5638S
D519	8-719-907-87	DIODE PR5638S
D520	8-719-907-86	DIODE BG5638S
FL501	1-519-275-00	INDICATOR TUBE, FLUORESCENT
IC101	8-759-924-12	IC LM7805CT
IC102	8-759-929-64	IC LM7905CT
IC105	8-759-924-12	IC LM7805CT
IC201	8-752-322-05	IC CXD1135Q
IC202	8-759-910-36	IC MSM5128-20GS
IC203	8-759-107-83	IC UPD7508HC-069
IC204	8-759-918-47	IC MB88501-299M
IC205	8-752-010-80	IC CX20108
IC206	8-759-802-32	IC L81649
IC207	8-759-802-32	IC L81649
IC208	8-759-240-66	IC TC4066B
IC209	8-759-240-66	IC TC4066B
IC210	8-759-202-13	IC TC74HCU04P
IC211	8-759-990-82	IC TL082CP
IC212	8-757-991-00	IC CX-7991
IC213	8-759-303-90	IC STA341M
IC301	8-759-938-46	IC PCM56P-JS
IC302	8-759-007-21	IC MC74HC4053N
IC303	8-759-990-82	IC TL082CP
IC304	8-759-170-12	IC UPC78M12H
IC305	8-759-700-24	IC NJM79M12A

ELECTRICAL PARTS

Ref.No.	Part No.	Description
IC306	8-759-202-13	IC TC74HCU04N
IC401	8-752-010-90	IC CX20109
IC402	8-759-145-58	IC UPC4558C
IC502	8-749-900-36	IC BX-1393
IC601	8-759-745-60	IC NJM4560D
J398	1-507-909-21	JACK, PIN 4P
J399	1-507-863-21	JACK, LARGE TYPE
L201	1-426-212-11	COIL (RF)
L801	1-421-915-11	COIL, LINE FILTER
LPF301	1-464-730-11	FILTER UNIT, LOW PASS
LPF302	1-464-730-11	FILTER UNIT, LOW PASS
M3	A-3239-495-A	M3 ASSY
Q101	8-729-205-95	TRANSISTOR 2SA1428Y
Q102	8-729-804-16	TRANSISTOR 2SD1666Q
Q202	8-729-600-27	TRANSISTOR 2SC634SP
Q203	8-729-600-27	TRANSISTOR 2SC634SP
Q204	8-729-600-27	TRANSISTOR 2SC634SP
Q205	8-729-600-27	TRANSISTOR 2SC634SP
Q206	8-729-117-54	TRANSISTOR 2SA1175
Q207	8-729-117-54	TRANSISTOR 2SA1175
Q208	8-729-900-63	TRANSISTOR DTA124ES
Q209	8-729-900-63	TRANSISTOR DTA124ES
Q210	8-729-900-63	TRANSISTOR DTA124ES
Q211	8-729-900-89	TRANSISTOR DTC144ES
Q212	8-729-900-89	TRANSISTOR DTC144ES
Q213	8-729-900-89	TRANSISTOR DTC144ES
Q214	8-729-900-89	TRANSISTOR DTC144ES
Q215	8-729-900-80	TRANSISTOR DTC114ES
Q216	8-729-900-80	TRANSISTOR DTC114ES
Q217	8-729-900-65	TRANSISTOR DTA144ES
Q218	8-729-900-80	TRANSISTOR DTC114ES
Q219	8-729-900-80	TRANSISTOR DTC114ES
Q224	8-729-117-54	TRANSISTOR 2SA1175
Q301	8-729-107-99	TRANSISTOR 2SC3622AK
Q302	8-729-107-99	TRANSISTOR 2SC3622AK
Q305	8-729-900-65	TRANSISTOR DTA144ES
Q306	8-729-900-65	TRANSISTOR DTA144ES
Q401	8-729-110-21	TRANSISTOR PH102
Q402	8-729-110-21	TRANSISTOR PH102
Q403	8-729-906-43	GP-1S03
Q404	8-729-900-36	TRANSISTOR DTC124ES
Q405	8-729-900-63	TRANSISTOR DTA124ES
Q406	8-729-206-43	TRANSISTOR 2SA1426Y
Q501	8-729-900-89	TRANSISTOR DTC144ES
Q502	8-729-900-89	TRANSISTOR DTC144ES
Q503	8-729-900-89	TRANSISTOR DTC144ES
Q504	8-729-900-89	TRANSISTOR DTC144ES
Q505	8-729-900-89	TRANSISTOR DTC144ES
Q506	8-729-900-89	TRANSISTOR DTC144ES
Q507	8-729-900-80	TRANSISTOR DTC114ES
Q508	8-729-900-89	TRANSISTOR DTC144ES
Q509	8-729-900-89	TRANSISTOR DTC144ES
Q510	8-729-900-89	TRANSISTOR DTC144ES
R101	1-249-417-11	CARBON 1K 5% 1/6W
R102	1-247-707-11	CARBON 390 5% 1/4W
R103	1-249-417-11	CARBON 1K 5% 1/6W

ELECTRICAL PARTS

Ref.No.	Part No.	Description			
R104	1-249-441-11	CARBON	100K	5%	1/6W
R106	1-217-387-00	FUSIBLE	10	5%	1/4W F
R107	1-247-721-11	CARBON	4.7K	5%	1/4W
R108	1-249-429-11	CARBON	10K	5%	1/6W
R109	1-247-713-11	CARBON	1K	5%	1/4W
R202	1-247-856-00	CARBON	11K	5%	1/6W
R203	1-249-429-11	CARBON	10K	5%	1/6W
R204	1-249-441-11	CARBON	100K	5%	1/6W
R205	1-249-437-11	CARBON	47K	5%	1/6W
R206	1-247-891-00	CARBON	330K	5%	1/6W
R207	1-247-856-00	CARBON	11K	5%	1/6W
R208	1-247-875-00	CARBON	68K	5%	1/6W
R209	1-247-859-00	CARBON	15K	5%	1/6W
R210	1-247-903-00	CARBON	1M	5%	1/6W
R211	1-247-859-00	CARBON	15K	5%	1/6W
R212	1-247-875-00	CARBON	68K	5%	1/6W
R213	1-247-883-00	CARBON	150K	5%	1/6W
R214	1-247-875-00	CARBON	68K	5%	1/6W
R215	1-247-860-00	CARBON	16K	5%	1/6W
R216	1-249-437-11	CARBON	47K	5%	1/6W
R217	1-247-838-00	CARBON	2K	5%	1/6W
R221	1-249-441-11	CARBON	100K	5%	1/6W
R222	1-249-441-11	CARBON	100K	5%	1/6W
R223	1-249-441-11	CARBON	100K	5%	1/6W
R224	1-249-417-11	CARBON	1K	5%	1/6W
R225	1-249-435-11	CARBON	33K	5%	1/6W
R226	1-247-857-00	CARBON	12K	5%	1/6W
R227	1-247-852-00	CARBON	7.5K	5%	1/6W
R228	1-215-453-00	METAL	22K	1%	1/6W
R229	1-215-453-00	METAL	22K	1%	1/6W
R230	1-249-422-11	CARBON	2.7K	5%	1/6W
R231	1-249-425-11	CARBON	4.7K	5%	1/6W
R232	1-247-887-00	CARBON	220K	5%	1/6W
R233	1-249-429-11	CARBON	10K	5%	1/6W
R234	1-247-859-00	CARBON	15K	5%	1/6W
R235	1-249-441-11	CARBON	100K	5%	1/6W
R236	1-249-429-11	CARBON	10K	5%	1/6W
R241	1-249-433-11	CARBON	22K	5%	1/6W
R242	1-247-903-00	CARBON	1M	5%	1/6W
R243	1-249-429-11	CARBON	10K	5%	1/6W
R244	1-249-429-11	CARBON	10K	5%	1/6W
R245	1-249-433-11	CARBON	22K	5%	1/6W
R246	1-249-435-11	CARBON	33K	5%	1/6W
R247	1-247-839-00	CARBON	2.2K	5%	1/6W
R248	1-247-887-00	CARBON	220K	5%	1/6W
R249	1-247-887-00	CARBON	220K	5%	1/6W
R250	1-247-891-00	CARBON	330K	5%	1/6W
R251	1-247-873-00	CARBON	56K	5%	1/6W
R252	1-249-439-11	CARBON	68K	5%	1/6W
R253	1-247-859-00	CARBON	15K	5%	1/6W
R254	1-247-903-00	CARBON	1M	5%	1/6W
R255	1-249-429-11	CARBON	10K	5%	1/6W
R256	1-247-846-00	CARBON	4.3K	5%	1/6W
R257	1-247-822-00	CARBON	430	5%	1/6W
R258	1-249-425-11	CARBON	4.7K	5%	1/6W
R259	1-247-869-00	CARBON	39K	5%	1/6W
R260	1-247-869-00	CARBON	39K	5%	1/6W

ELECTRICAL PARTS

Ref.No.	Part No.	Description			
R261	1-247-838-00	CARBON	2K	5%	1/6W
R262	1-249-405-11	CARBON	100	5%	1/6W
R263	1-247-838-00	CARBON	2K	5%	1/6W
R264	1-249-405-11	CARBON	100	5%	1/6W
R265	1-249-405-11	CARBON	100	5%	1/6W
R267	1-249-441-11	CARBON	100K	5%	1/6W
R268	1-247-853-00	CARBON	8.2K	5%	1/6W
R269	1-249-435-11	CARBON	33K	5%	1/6W
R270	1-249-422-11	CARBON	2.7K	5%	1/6W
R271	1-249-429-11	CARBON	10K	5%	1/6W
R272	1-249-439-11	CARBON	68K	5%	1/6W
R273	1-249-429-11	CARBON	10K	5%	1/6W
R274	1-249-429-11	CARBON	10K	5%	1/6W
R275	1-249-429-11	CARBON	10K	5%	1/6W
R276	1-249-429-11	CARBON	10K	5%	1/6W
R277	1-249-429-11	CARBON	10K	5%	1/6W
R278	1-249-429-11	CARBON	10K	5%	1/6W
R279	1-247-864-00	CARBON	24K	5%	1/6W
R280	1-249-433-11	CARBON	22K	5%	1/6W
R281	1-249-429-11	CARBON	10K	5%	1/6W
R282	1-249-440-11	CARBON	82K	5%	1/6W
R283	1-247-838-00	CARBON	2K	5%	1/6W
R285	1-249-429-11	CARBON	10K	5%	1/6W
R286	1-249-429-11	CARBON	10K	5%	1/6W
R287	1-249-429-11	CARBON	10K	5%	1/6W
R288	1-247-889-00	CARBON	270K	5%	1/6W
R289	1-247-895-00	CARBON	470K	5%	1/6W
R290	1-249-429-11	CARBON	10K	5%	1/6W
R291	1-249-429-11	CARBON	10K	5%	1/6W
R292	1-249-429-11	CARBON	10K	5%	1/6W
R293	1-249-429-11	CARBON	10K	5%	1/6W
R294	1-249-429-11	CARBON	10K	5%	1/6W
R295	1-249-429-11	CARBON	10K	5%	1/6W
R296	1-249-417-11	CARBON	1K	5%	1/6W
R297	1-249-417-11	CARBON	1K	5%	1/6W
R298	1-249-429-11	CARBON	10K	5%	1/6W
R299	1-249-429-11	CARBON	10K	5%	1/6W
R300	1-249-429-11	CARBON	10K	5%	1/6W
R301	1-249-429-11	CARBON	10K	5%	1/6W
R302	1-249-429-11	CARBON	10K	5%	1/6W
R303	1-249-429-11	CARBON	10K	5%	1/6W
R304	1-249-429-11	CARBON	10K	5%	1/6W
R305	1-249-429-11	CARBON	10K	5%	1/6W
R306	1-249-429-11	CARBON	10K	5%	1/6W
R307	1-249-429-11	CARBON	10K	5%	1/6W
R308	1-249-429-11	CARBON	10K	5%	1/6W
R309	1-249-429-11	CARBON	10K	5%	1/6W
R310	1-249-441-11	CARBON	100K	5%	1/6W
R311	1-249-429-11	CARBON	10K	5%	1/6W
R312	1-249-429-11	CARBON	10K	5%	1/6W
R313	1-249-429-11	CARBON	10K	5%	1/6W
R314	1-249-429-11	CARBON	10K	5%	1/6W
R315	1-249-417-11	CARBON	1K	5%	1/6W
R316	1-249-429-11	CARBON	10K	5%	1/6W
R317	1-249-417-11	CARBON	1K	5%	1/6W
R318	1-249-429-11	CARBON	10K	5%	1/6W
R319	1-249-433-11	CARBON	22K	5%	1/6W

ELECTRICAL PARTS

Ref.No.	Part No.	Description			
R320	1-249-433-11	CARBON	22K	5%	1/6W
R321	1-249-417-11	CARBON	1K	5%	1/6W
R322	1-249-429-11	CARBON	10K	5%	1/6W
R323	1-249-417-11	CARBON	1K	5%	1/6W
R331	1-247-725-11	CARBON	10K		1/4W
R332	1-247-723-11	CARBON	6.8K		1/4W
R333	1-247-704-11	CARBON	220		1/4W
R334	1-247-721-11	CARBON	4.7K		1/4W
R335	1-247-719-11	CARBON	3.3K		1/4W
R337	1-249-497-11	CARBON	33K		1/4W
R338	1-247-712-11	CARBON	820		1/4W
R341	1-249-417-11	CARBON	1K	5%	1/6W
R342	1-247-700-11	CARBON	100		1/4W
R351	1-247-712-11	CARBON	820		1/4W
R352	1-249-435-11	CARBON	33K	5%	1/6W
R353	1-249-434-11	CARBON	27K	5%	1/6W
R354	1-249-425-11	CARBON	4.7K	5%	1/6W
R355	1-247-869-00	CARBON	39K	5%	1/6W
R356	1-247-815-00	CARBON	220	5%	1/6W
R362	1-247-723-11	CARBON	6.8K		1/4W
R363	1-249-542-11	CARBON	390		1/4W
R364	1-247-721-11	CARBON	4.7K		1/4W
R365	1-247-719-11	CARBON	3.3K		1/4W
R367	1-249-497-11	CARBON	33K		1/4W
R368	1-247-712-11	CARBON	820		1/4W
R371	1-249-417-11	CARBON	1K	5%	1/6W
R372	1-247-700-11	CARBON	100		1/4W
R381	1-247-712-11	CARBON	820		1/4W
R382	1-249-435-11	CARBON	33K	5%	1/6W
R383	1-249-434-11	CARBON	27K	5%	1/6W
R384	1-249-425-11	CARBON	4.7K	5%	1/6W
R385	1-247-869-00	CARBON	39K	5%	1/6W
R386	1-247-815-00	CARBON	220	5%	1/6W
R392	1-249-441-11	CARBON	100K	5%	1/6W
R401	1-247-815-00	CARBON	220	5%	1/6W
R402	1-247-815-00	CARBON MELF	220	5%	1/5W
R403	1-247-887-00	CARBON	220K	5%	1/6W
R404	1-249-433-11	CARBON	22K	5%	1/6W
R405	1-247-839-00	CARBON	2.2K	5%	1/6W
R406	1-247-903-00	CARBON	1M	5%	1/6W
R407	1-249-417-11	CARBON	1K	5%	1/6W
R408	1-249-433-11	CARBON	22K	5%	1/6W
R409	1-247-870-00	CARBON	43K	5%	1/6W
R410	1-247-895-00	CARBON	470K	5%	1/6W
R411	1-247-783-00	CARBON	10	5%	1/6W
R412	1-247-783-00	CARBON	10	5%	1/6W
R413	1-247-815-00	CARBON	220	5%	1/6W
R415	1-249-417-11	CARBON	1K	5%	1/6W
R416	1-247-903-00	CARBON	1M	5%	1/6W
R417	1-247-903-00	CARBON	1M	5%	1/6W
R418	1-247-839-00	CARBON	2.2K	5%	1/6W
R419	1-249-414-11	CARBON	560	5%	1/6W
R420	1-247-845-00	CARBON	3.9K	5%	1/6W
R421	1-249-429-11	CARBON	10K	5%	1/6W
R422	1-247-873-00	CARBON	56K	5%	1/6W
R423	1-249-429-11	CARBON	10K	5%	1/6W
R424	1-249-441-11	CARBON	100K	5%	1/6W

ELECTRICAL PARTS

Ref.No.	Part No.	Description			
R425	1-249-429-11	CARBON	10K	5%	1/6W
R426	1-249-441-11	CARBON	100K	5%	1/6W
R427	1-247-884-00	CARBON	160K	5%	1/6W
R428	1-247-888-00	CARBON	240K	5%	1/6W
R429	1-249-429-11	CARBON	10K	5%	1/6W
R430	1-249-429-11	CARBON	10K	5%	1/6W
R431	1-249-429-11	CARBON	10K	5%	1/6W
R432	1-249-441-11	CARBON	100K	5%	1/6W
R433	1-249-441-11	CARBON	100K	5%	1/6W
R434	1-247-889-00	CARBON	270K	5%	1/6W
R435	1-247-893-00	CARBON	390K	5%	1/6W
R501	1-247-903-00	CARBON	1M	5%	1/6W
R502	1-249-417-11	CARBON	1K	5%	1/6W
R503	1-249-433-11	CARBON	22K	5%	1/6W
R504	1-247-839-00	CARBON	2.2K	5%	1/6W
R505	1-247-815-00	CARBON	220	5%	1/6W
R506	1-247-815-00	CARBON	220	5%	1/6W
R507	1-247-817-00	CARBON	270	5%	1/6W
R508	1-247-817-00	CARBON	270	5%	1/6W
R509	1-247-817-00	CARBON	270	5%	1/6W
R510	1-247-815-00	CARBON	220	5%	1/6W
R511	1-249-433-11	CARBON	22K	5%	1/6W
R512	1-249-433-11	CARBON	22K	5%	1/6W
R513	1-249-429-11	CARBON	10K	5%	1/6W
R514	1-247-817-00	CARBON	270	5%	1/6W
R515	1-249-429-11	CARBON	10K	5%	1/6W
R516	1-247-815-00	CARBON	220	5%	1/6W
R517	1-247-815-00	CARBON	220	5%	1/6W
R518	1-249-429-11	CARBON	10K	5%	1/6W
R519	1-247-817-00	CARBON	270	5%	1/6W
RV201	1-237-191-11	RES, ADJ, CARBON 2K			
RV202	1-237-193-11	RES, ADJ, CARBON 10K			
RV203	1-237-194-11	RES, ADJ, CARBON 20K			
RV399	1-230-208-00	RES, VAR, CARBON 20K/20K			
RV401	1-237-450-11	RES, ADJ, CARBON 200K			
RV402	1-237-450-11	RES, ADJ, CARBON 200K			
RV403	1-237-449-11	RES, ADJ, CARBON 100K			
S401	1-570-503-11	SWITCH, MICRO			
S402	1-570-502-11	SWITCH, MICRO			
S403	1-570-504-11	SWITCH, MICRO			
S404	1-570-504-11	SWITCH, MICRO			
S405	1-570-504-11	SWITCH, MICRO			
S406	1-570-504-11	SWITCH, MICRO			
S407	1-570-504-11	SWITCH, MICRO			
S408	1-570-886-11	SWITCH, MICRO			
S501	1-570-876-11	SWITCH, KEY BOARD			
S502	1-570-876-11	SWITCH, KEY BOARD			
S503	1-570-876-11	SWITCH, KEY BOARD			
S504	1-570-876-11	SWITCH, KEY BOARD			
S505	1-570-876-11	SWITCH, KEY BOARD			
S506	1-570-876-11	SWITCH, KEY BOARD			
S507	1-570-876-11	SWITCH, KEY BOARD			
S508	1-554-419-00	SWITCH, PUSH (1 KEY)			
S551	1-570-876-11	SWITCH, KEY BOARD			
S552	1-570-876-11	SWITCH, KEY BOARD			
S553	1-570-876-11	SWITCH, KEY BOARD			
S554	1-570-876-11	SWITCH, KEY BOARD			
S555	1-570-876-11	SWITCH, KEY BOARD			
S556	1-570-876-11	SWITCH, KEY BOARD			

ELECTRICAL PARTS

Ref.No.	Part No.	Description
S557	1-570-876-11	SWITCH, KEY BOARD
S558	1-570-876-11	SWITCH, KEY BOARD
S559	1-570-876-11	SWITCH, KEY BOARD
S560	1-570-876-11	SWITCH, KEY BOARD
S561	1-570-876-11	SWITCH, KEY BOARD
S562	1-570-876-11	SWITCH, KEY BOARD
S563	1-570-876-11	SWITCH, KEY BOARD
S564	1-570-876-11	SWITCH, KEY BOARD
S565	1-570-876-11	SWITCH, KEY BOARD
S566	1-570-876-11	SWITCH, KEY BOARD
S567	1-570-876-11	SWITCH, KEY BOARD
S568	1-570-876-11	SWITCH, KEY BOARD
S569	1-570-876-11	SWITCH, KEY BOARD
S570	1-570-876-11	SWITCH, KEY BOARD
S571	1-570-876-11	SWITCH, KEY BOARD
S572	1-570-876-11	SWITCH, KEY BOARD
S573	1-570-876-11	SWITCH, KEY BOARD
S574	1-570-876-11	SWITCH, KEY BOARD
S575	1-570-876-11	SWITCH, KEY BOARD
S576	1-570-876-11	SWITCH, KEY BOARD
S577	1-570-876-11	SWITCH, KEY BOARD
S578	1-570-876-11	SWITCH, KEY BOARD
S579	1-570-876-11	SWITCH, KEY BOARD
S801	1-553-318-00	SWITCH, PUSH (AC POWER)(1 KEY)
S901	1-552-625-00	SWITCH, SLIDE
S903	1-553-198-00	SWITCH, LEAF (SLED LIMIT)

T901 A-1-448-724-11 TRANSFORMER, POWER

TP401	*1-560-061-00	PIN, CONNECTOR 3P
TP402	*1-560-060-00	PIN, CONNECTOR 2P

X201	1-567-301-11	OSCILLATOR, CRYSTAL
X202	1-567-170-00	OSCILLATOR, CERAMIC
X501	1-567-170-00	OSCILLATOR, CERAMIC

ACCESSORY & PACKING MATERIAL

<u>Part No.</u>	<u>Description</u>
1-463-794-11	REMOTE COMMANDER
1-558-543-11	CORD, CONNECTION
1-558-787-11	CORD, CONNECTION
2-114-008-01	CASE, MAGAZINE
2-326-445-01	BAG, POLYETHYLENE
3-701-630-00	BAG, POLYETHYLENE
3-703-390-01	INSTRUCTION
3-703-710-41	STICKER, SONY SYMBOL (12)
3-765-647-21	MANUAL, INSTRUCTION
3-765-742-01	MANUAL, INSTRUCTION
4-917-489-01	CUSHION
4-917-490-11	INDIVIDUAL CARTON
4-917-494-01	BATT CASE, COMMANDER
4-917-497-10	CUSHION, PACK DOOR
7-685-103-14	SCREW +P 2X5 TYPE2 NON-SLIT
7-685-105-14	TAPPING +P 2X8 NON-SLIT
A-4675-162-A	MAGAZINE ASSY
X-2114-001-1	HOLDER ASSY, CD BOOKLET